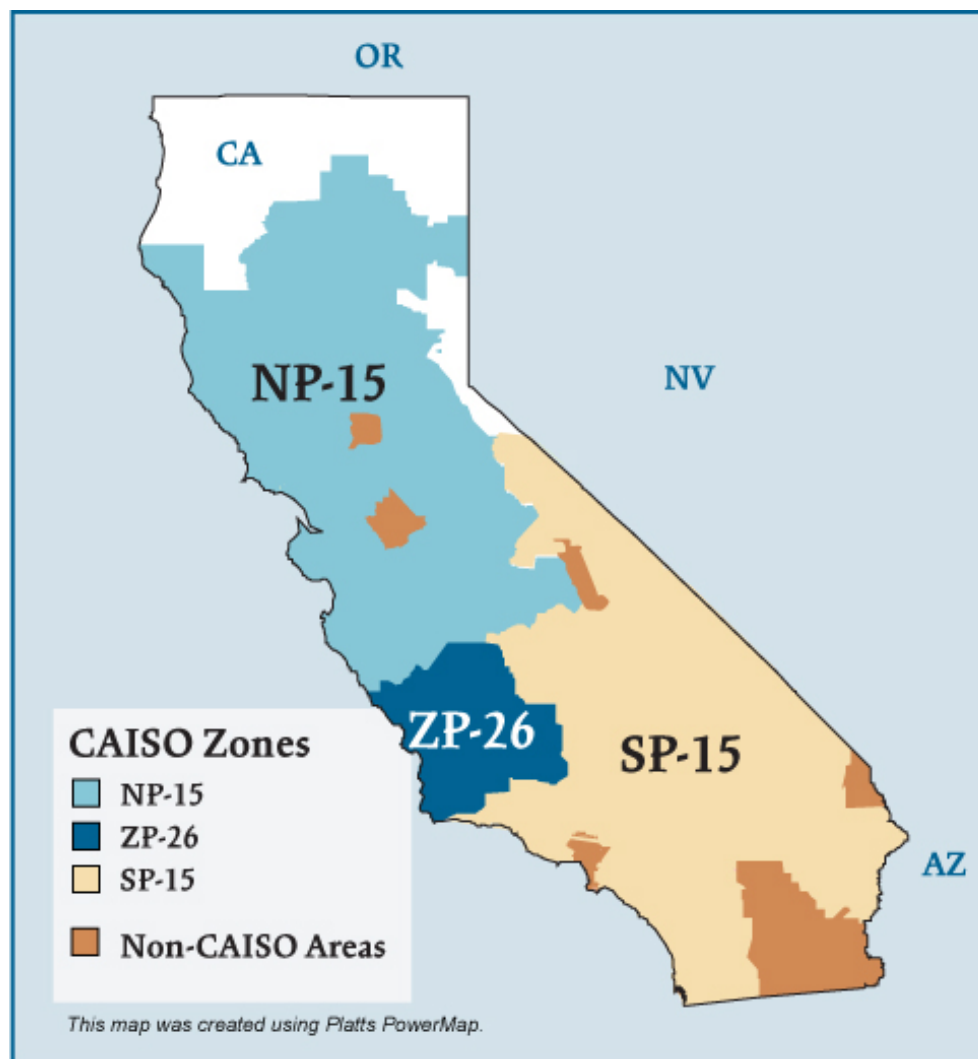


California Electric Regions



California Electric Market: Overview and Focal Points

Federal Energy Regulatory Commission • Market Oversight • www.ferc.gov/oversight.gov/oversight

Overview

Geography

States covered: California (most of) and northern Baja California (Mexico)

Reliability region: California-Mexico Power Area (CAMX) sub-region of the Western Electric Coordinating Council (WECC)

Balancing authorities: California ISO (CAISO), Sacramento Municipal Utility District (SMUD), Turlock Irrigation District (TID), Los Angeles Department of Water and Power (LADWP), and Comision Federal de Electricidad (CFE).

Approximately 80% of demand in the CAMX subregion is within the area of the CAISO balancing authority. The portion of the CAMX area within Mexico is comparatively small. The remaining 20% of California's load is managed primarily by municipal utilities and irrigation districts such as the Los Angeles Department of Water and Power, the Sacramento Municipal Utility District, and the Imperial Irrigation District.

CAISO zones: NP-15, ZP-26, SP-15

RTO/ISO

California ISO (CAISO) (established 1998) operates the region's power grid and wholesale electric markets:

- Real-time imbalance energy,
- Ancillary services, and
- Transmission usage.

[CAISO 2008 State of the Markets Report](#)

Market Monitor: Keith Casey – Director, Department of Market Monitoring

Updated May 13, 2008

1002

California Electric Market: Overview and Focal Points

Federal Energy Regulatory Commission • Market Oversight • www.ferc.gov/oversight.gov/oversight

Generation/Supply

Marginal fuel type: natural gas

Generating capacity (summer 2006): 56,347 MW

Capacity reserve (summer 2006): 6,077 MW

Reserve margin (summer 2006): 12%

Demand

All time peak demand: 50,270 MW (set July 24, 2006)

System peak loads declined in 2008, due in large part to a generally mild summer

.

Peak demand change: -3.5% (2007-2008)

	2004	2005	2006	2007	2008
Summer Peak Demand (MW)	45,597	45,562	50,270	48,615	46,897

Source: Derived from CAISO data.

Load pockets: Humbolt, North Bay, Greater San Francisco Bay, Sierra, Stockton, Los Angeles Basin, and San Diego areas.

California Electric Market: Overview and Focal Points

Federal Energy Regulatory Commission • Market Oversight • www.ferc.gov/oversight.gov/oversight

Prices (CAISO only)

Annual Average Price (ISO Real-time)

NP-15:

2004: \$38.35/MWh

2005: \$54.39/MWh

2006: \$43.17/MWh

2007: \$54.44/MWh

SP-15:

2004: \$39.47/MWh

2005: \$55.57/MWh

2006: \$46.50/MWh

2007: \$54.45/MWh

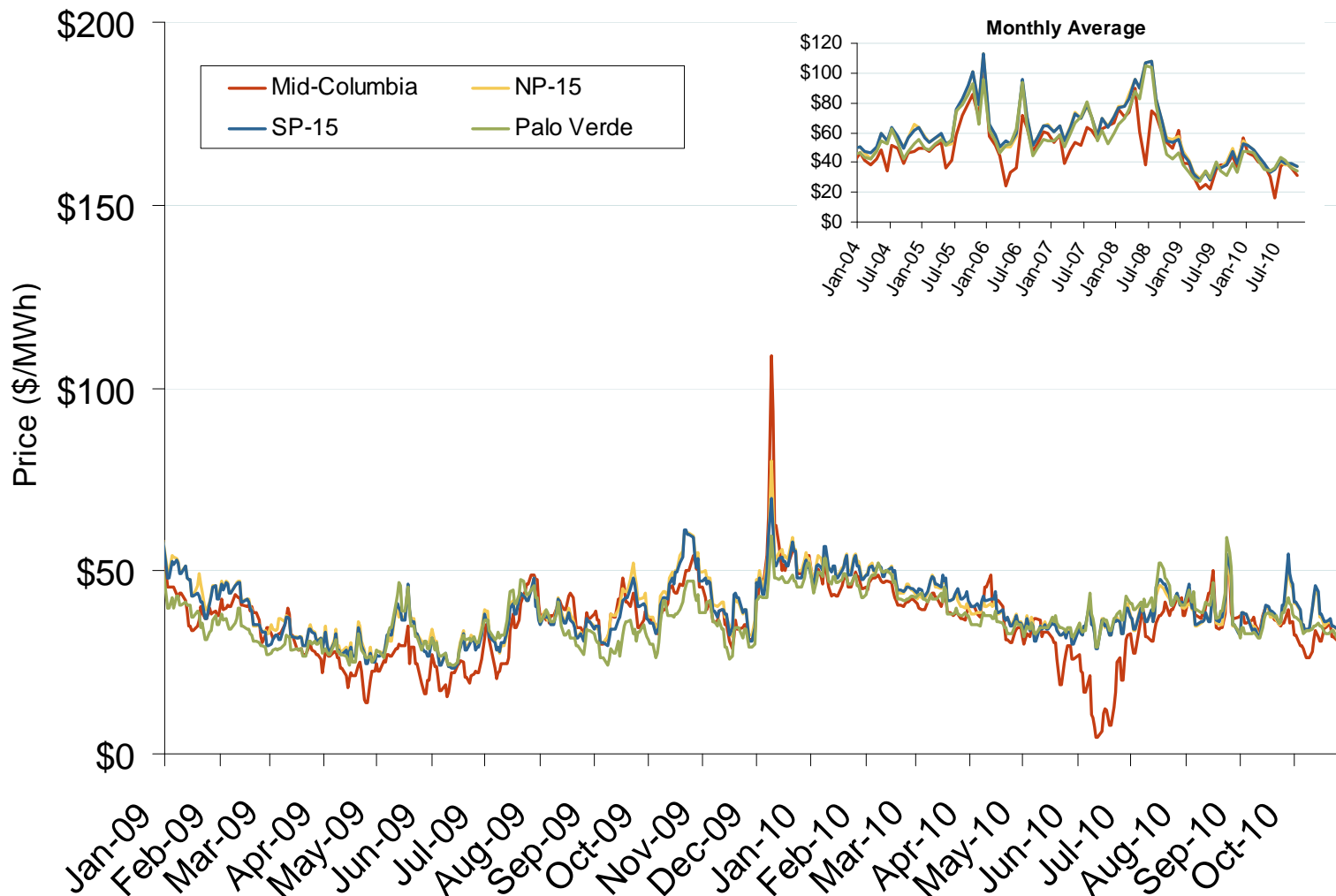
Interconnections/Seams

Load serving entities within CAISO rely on imports for approximately one-fourth of their annual energy needs.

Annual Average Bilateral Prices

Annual Average Day Ahead On Peak Prices (\$/MWh)						
	2005	2006	2007	2008	2009	5-Year Avg
NP15	\$72.49	\$61.08	\$66.59	\$80.14	\$39.29	\$63.93
SP15	\$73.04	\$61.95	\$66.48	\$79.36	\$38.31	\$63.84

Western Daily Bilateral Day-Ahead On-Peak Prices

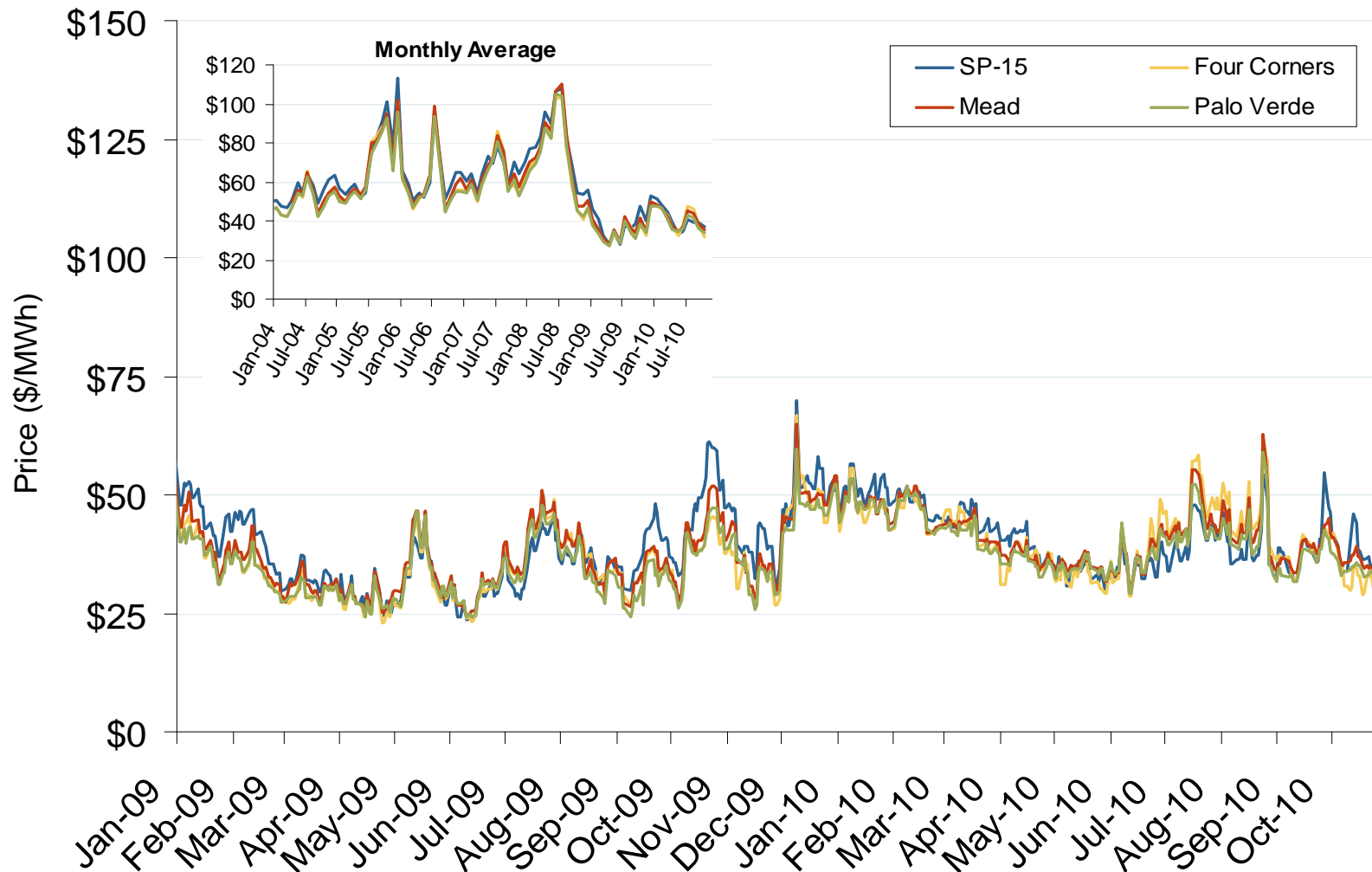


Source: Derived from *Platts* data.

Updated November 5, 2010

1006

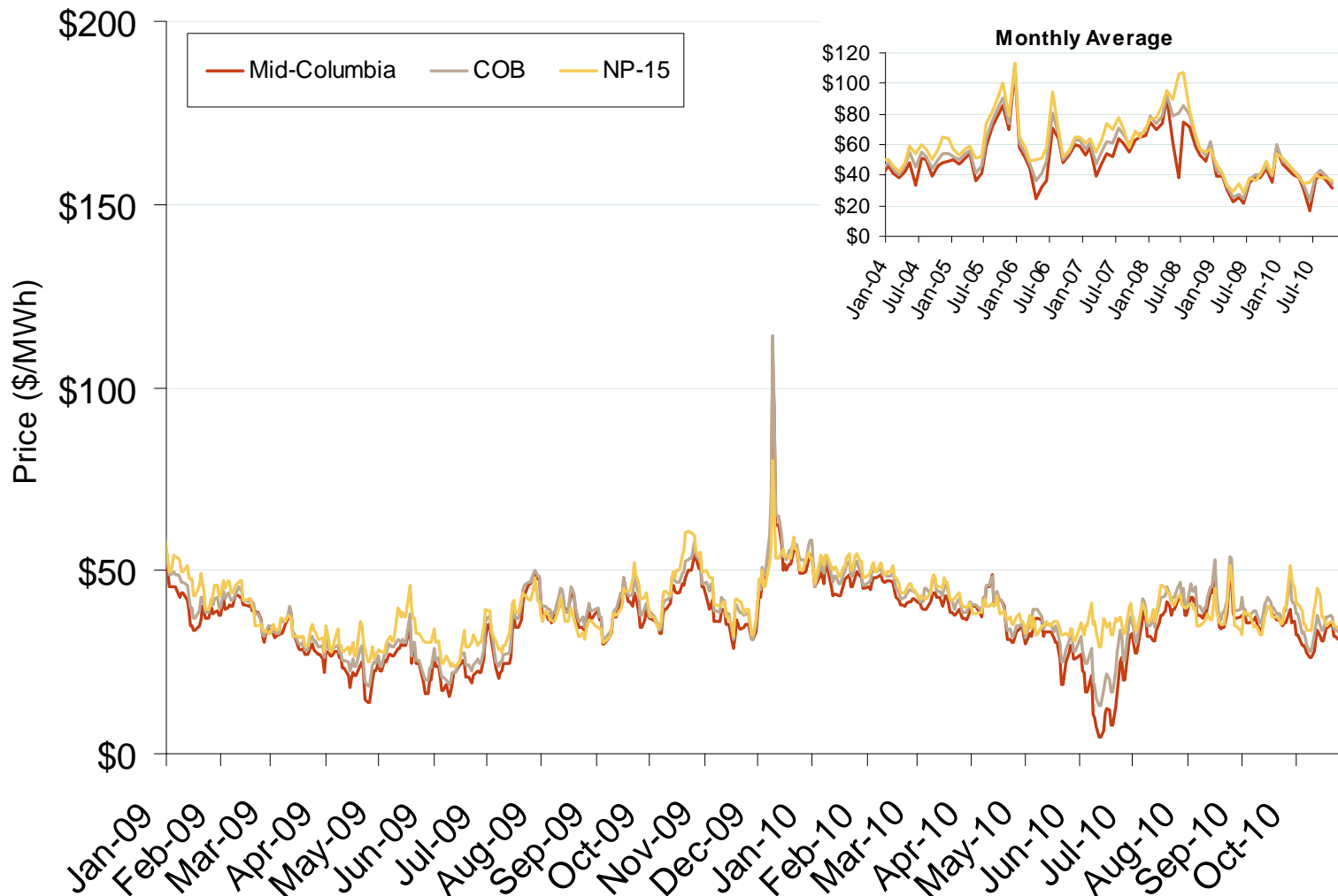
Southwestern Daily Bilateral Day-Ahead On-Peak Prices



Source: Derived from *Platts* data.

Updated November 5, 2010 1005

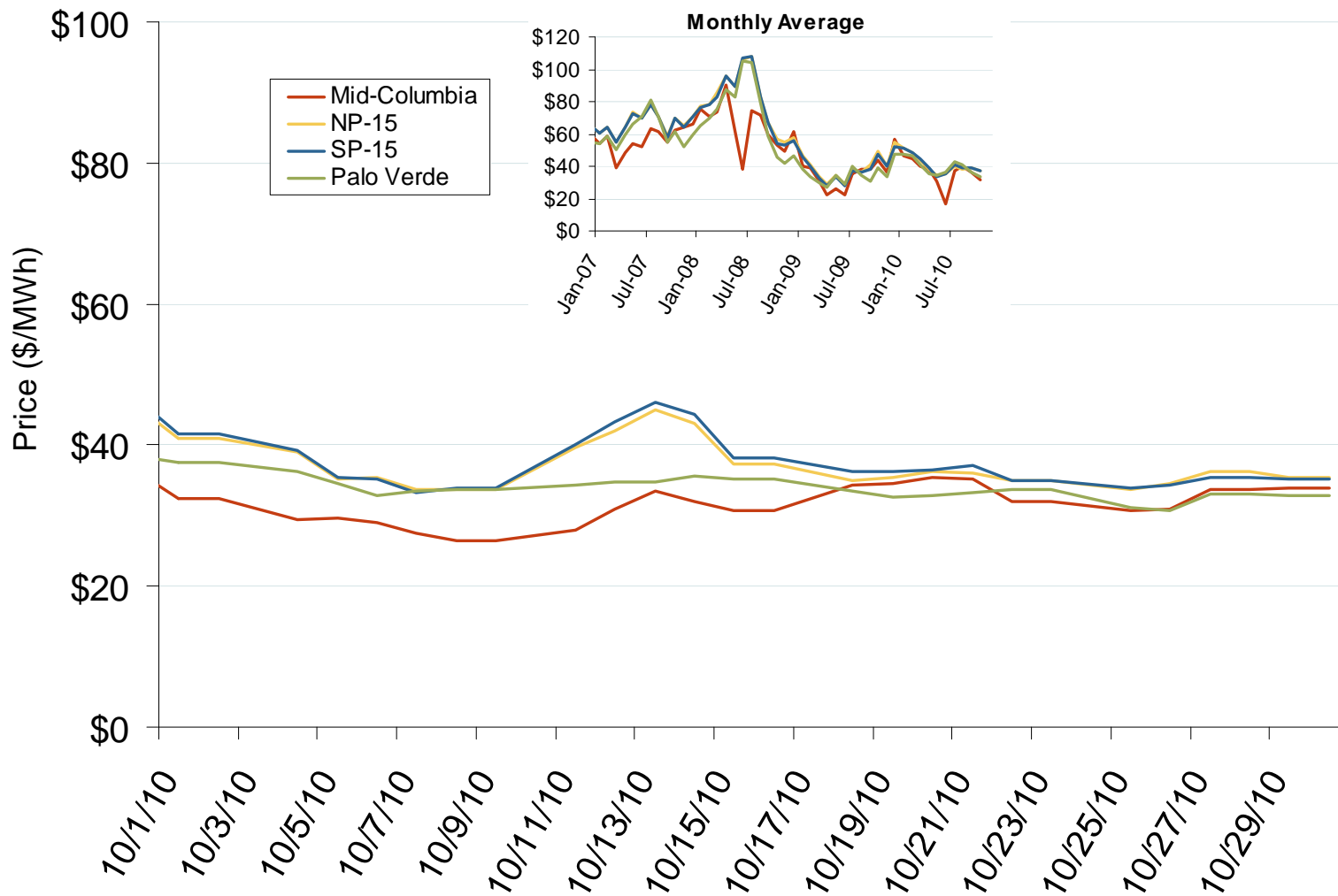
Northwestern Daily Bilateral Day-Ahead On-Peak Prices



Source: Derived from *Platts* data.

Updated November 5, 2010 1007

Western Daily Bilateral Day-Ahead On-Peak Prices

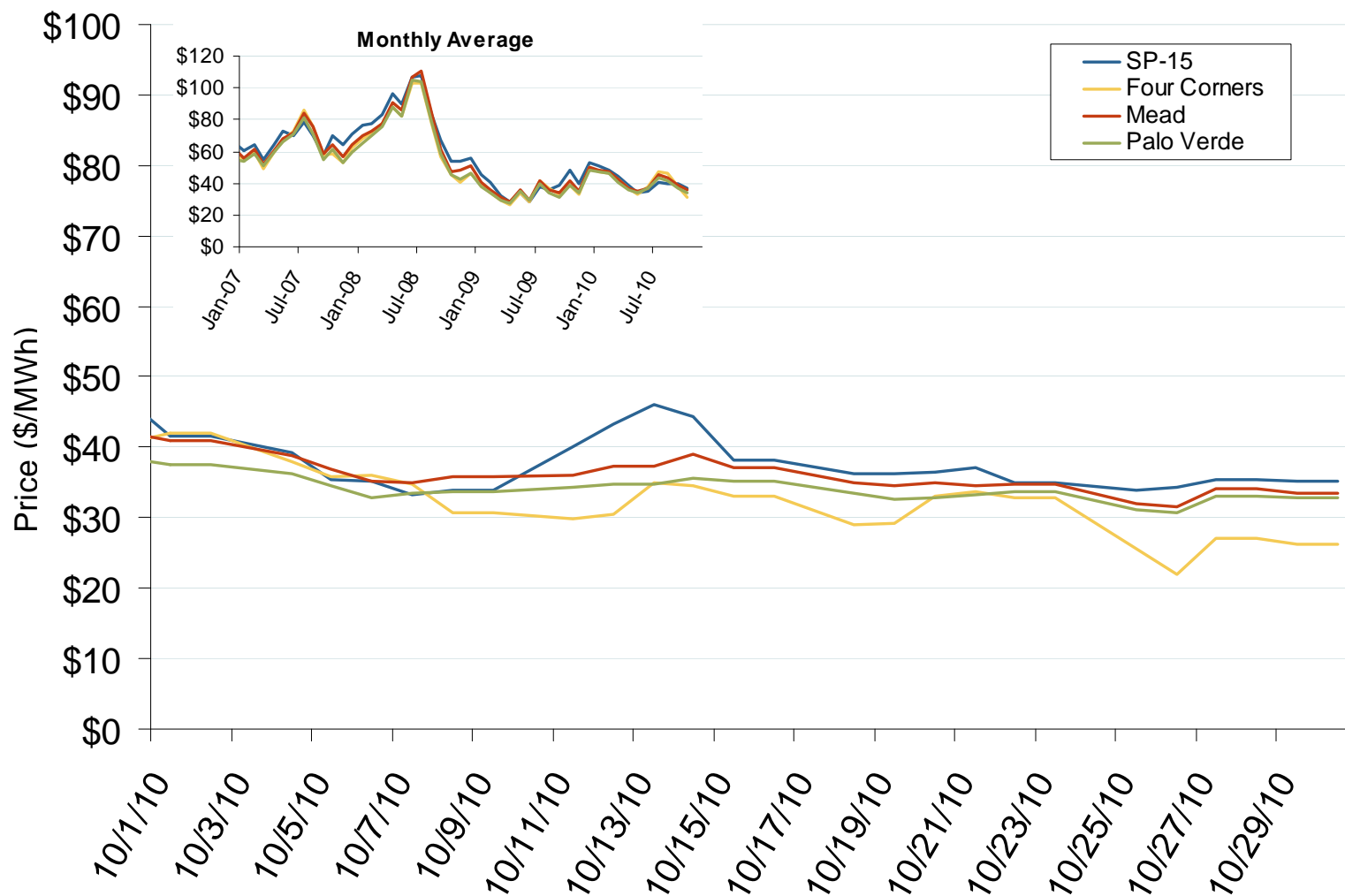


Source: Derived from *Platts* data.

Updated November 5, 2010

11022

Southwestern Daily Bilateral Day-Ahead On-Peak Prices

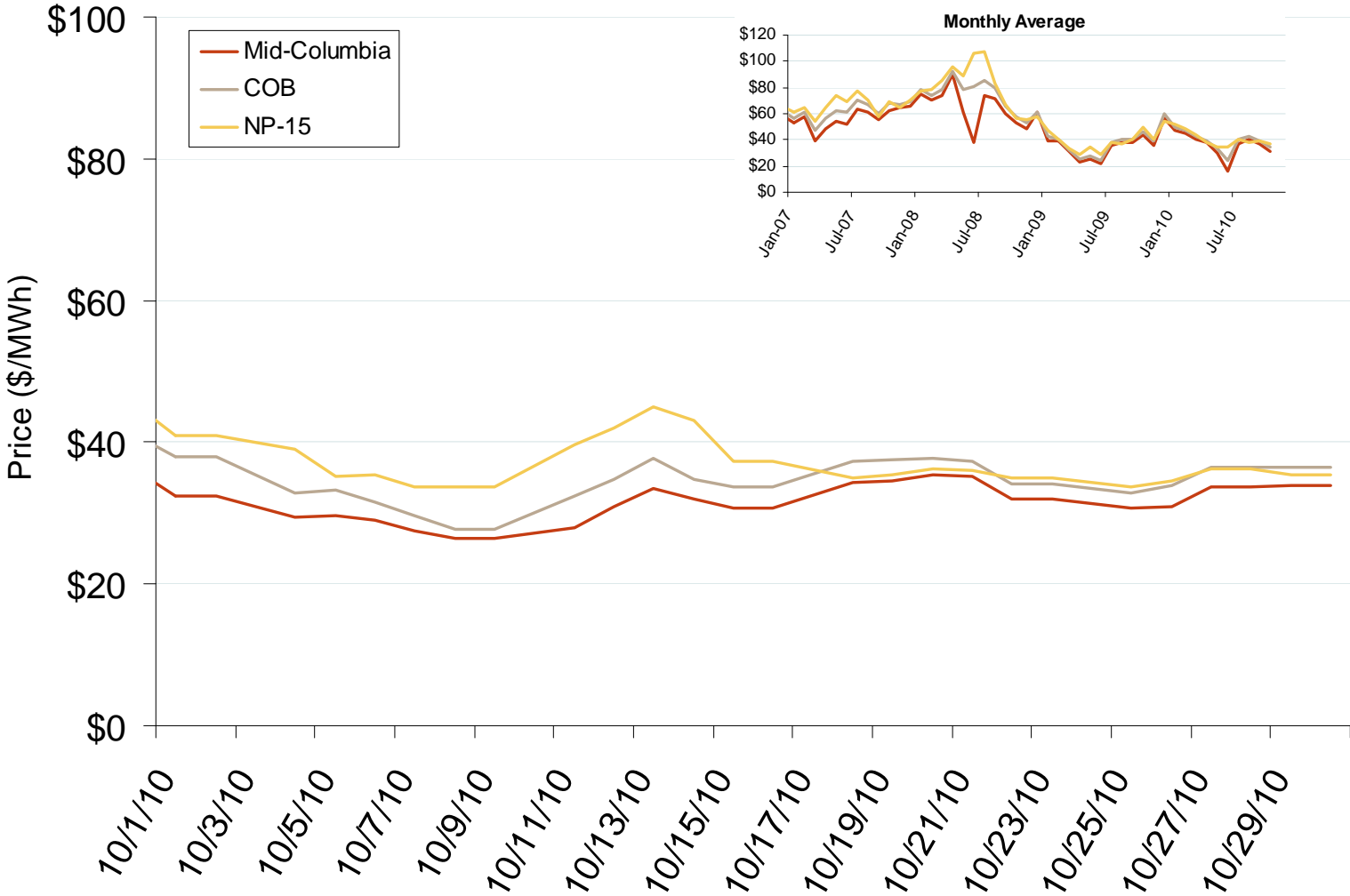


Source: Derived from *Platts* data.

Updated November 5, 2010

11021

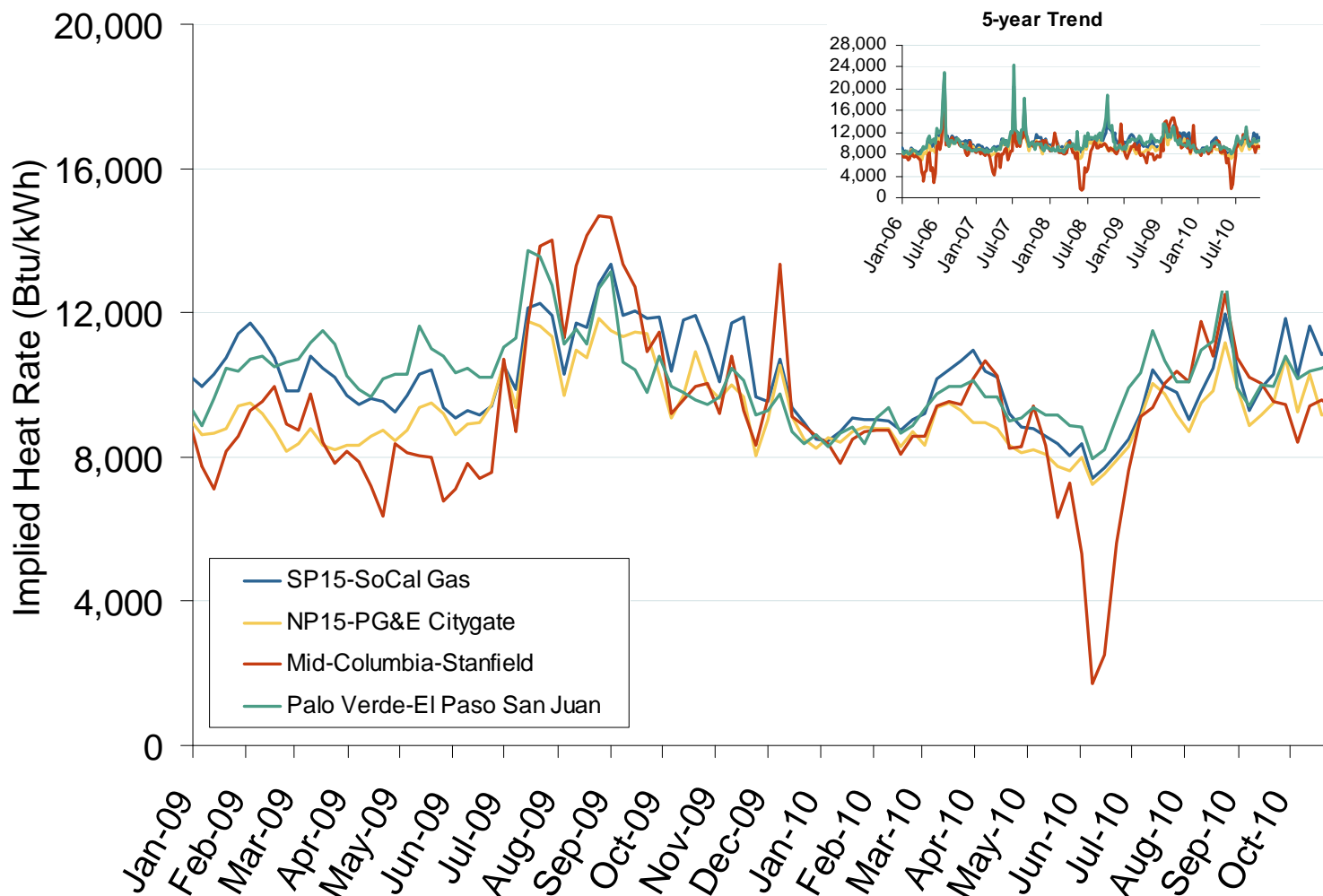
Northwestern Daily Bilateral Day-Ahead On-Peak Prices



Source: Derived from Platts data.

Updated November 5, 2010

Implied Heat Rates at Western Trading Points Weekly Averages

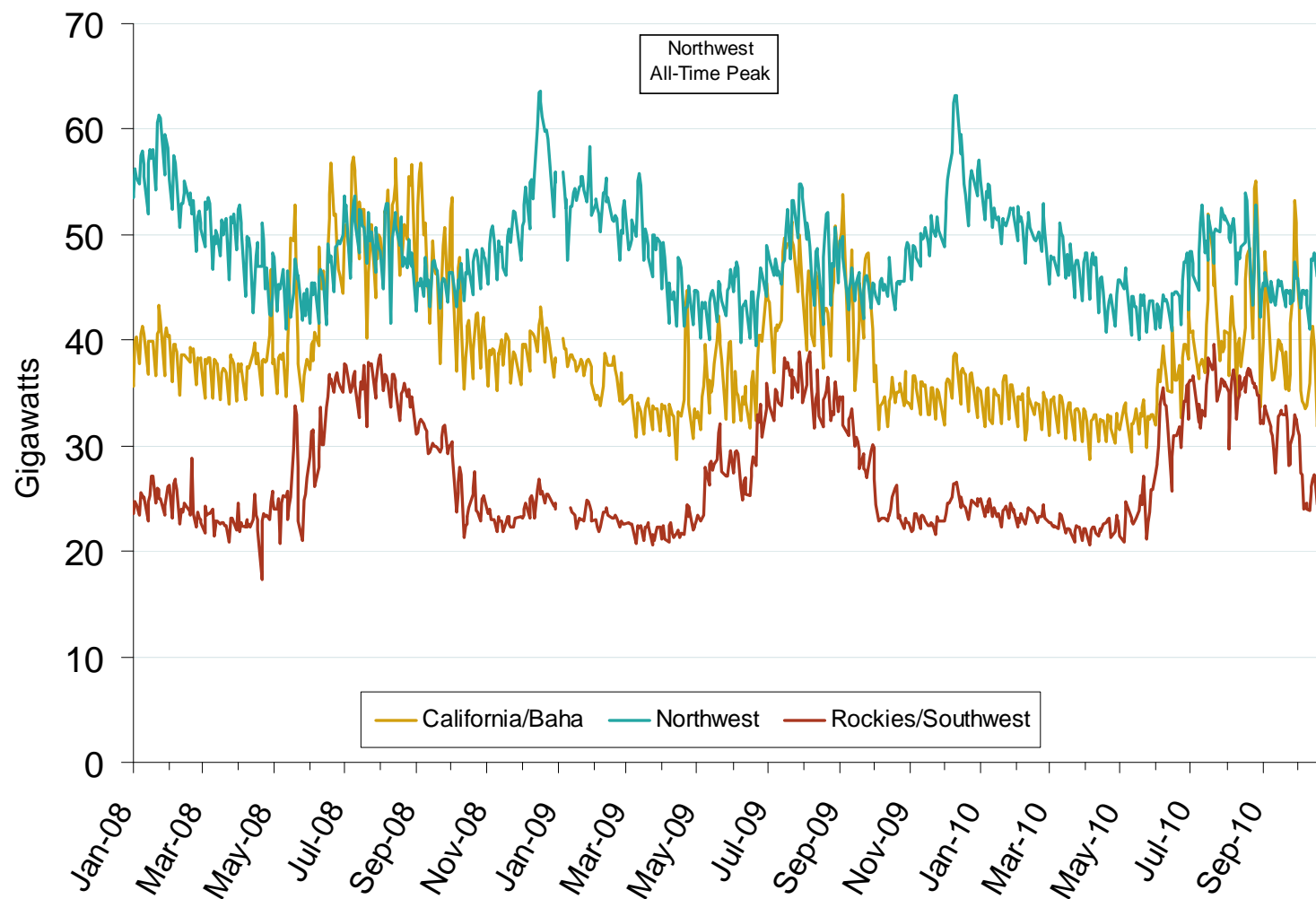


Source: Derived from *Platts* on-peak electric and natural gas price data.

Updated November 5, 2010

1143

California Electric Market: Daily Peak Demand

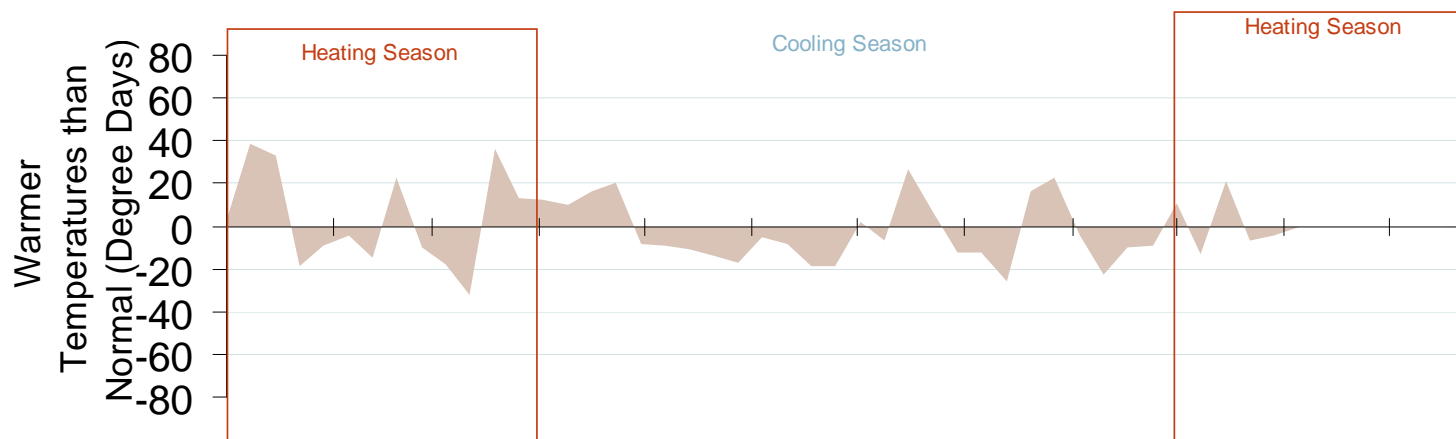
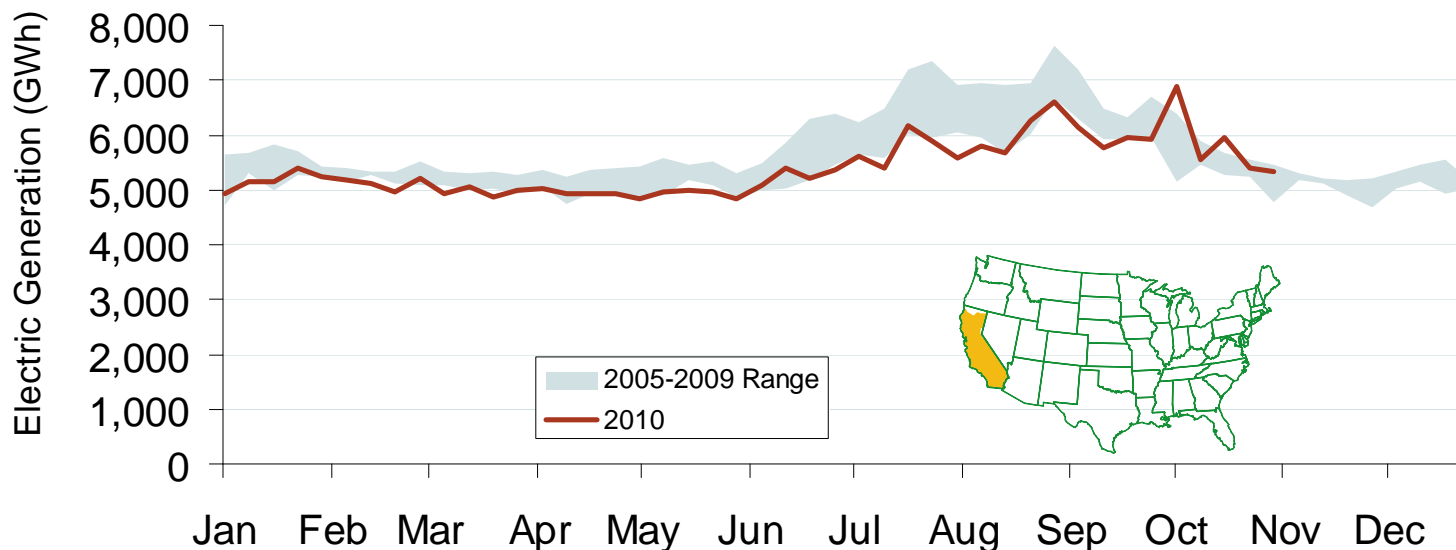
Federal Energy Regulatory Commission • Market Oversight • www.ferc.gov/oversight**Western Daily Actual Peak Demand**

Source: Derived from WECC Daily Report data available at <http://wecc.biz>. Data does not include weekends and holidays. Some data for 12/31/2008 – 1/9/2009 are not available from WECC.

Updated November 5, 2010

1192

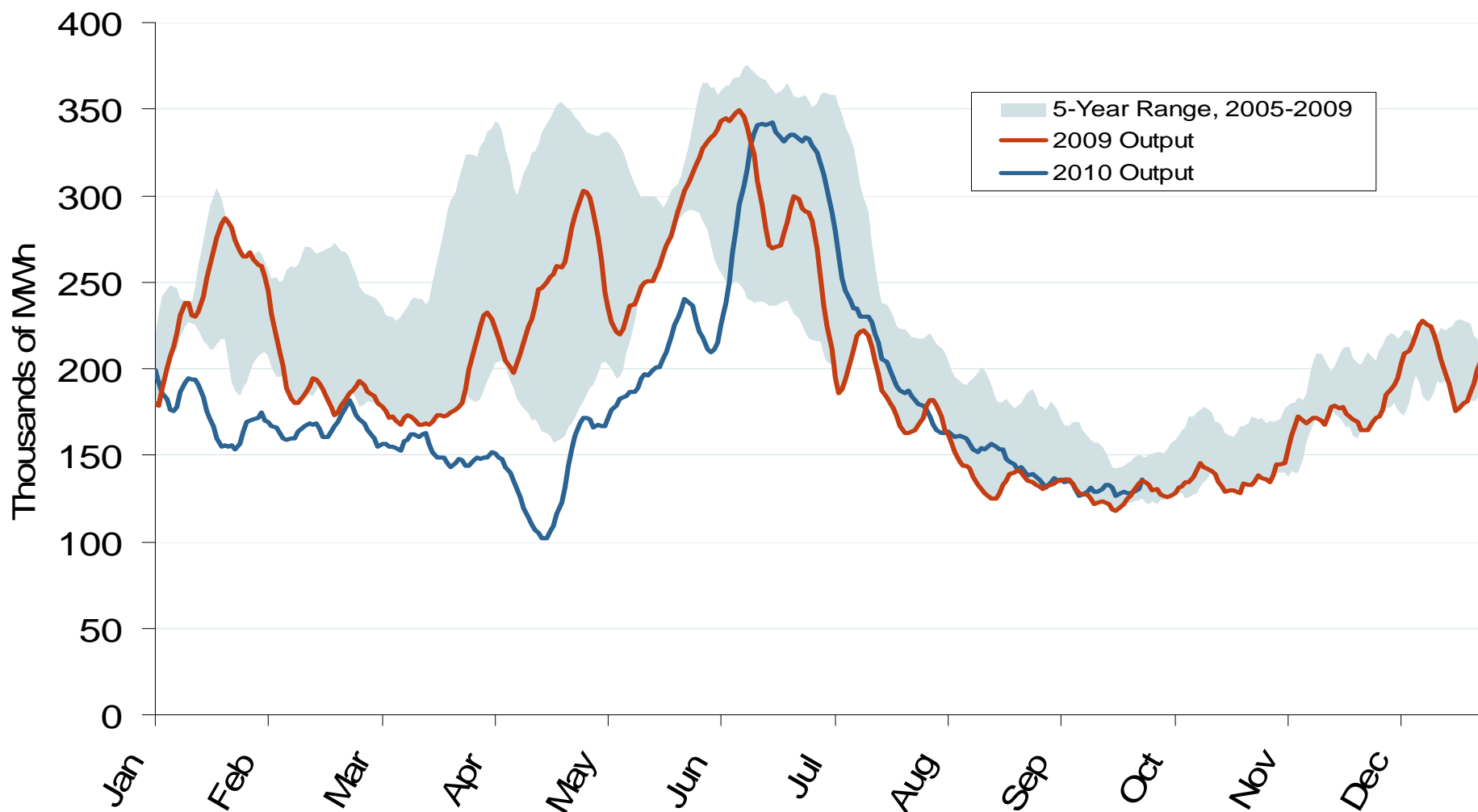
Weekly Electric Generation Output and Temperatures California



Source: Derived from *EEl* and NOAA data.

Updated November 5, 2010

California Electric Market: Pacific Northwest Hydro Production

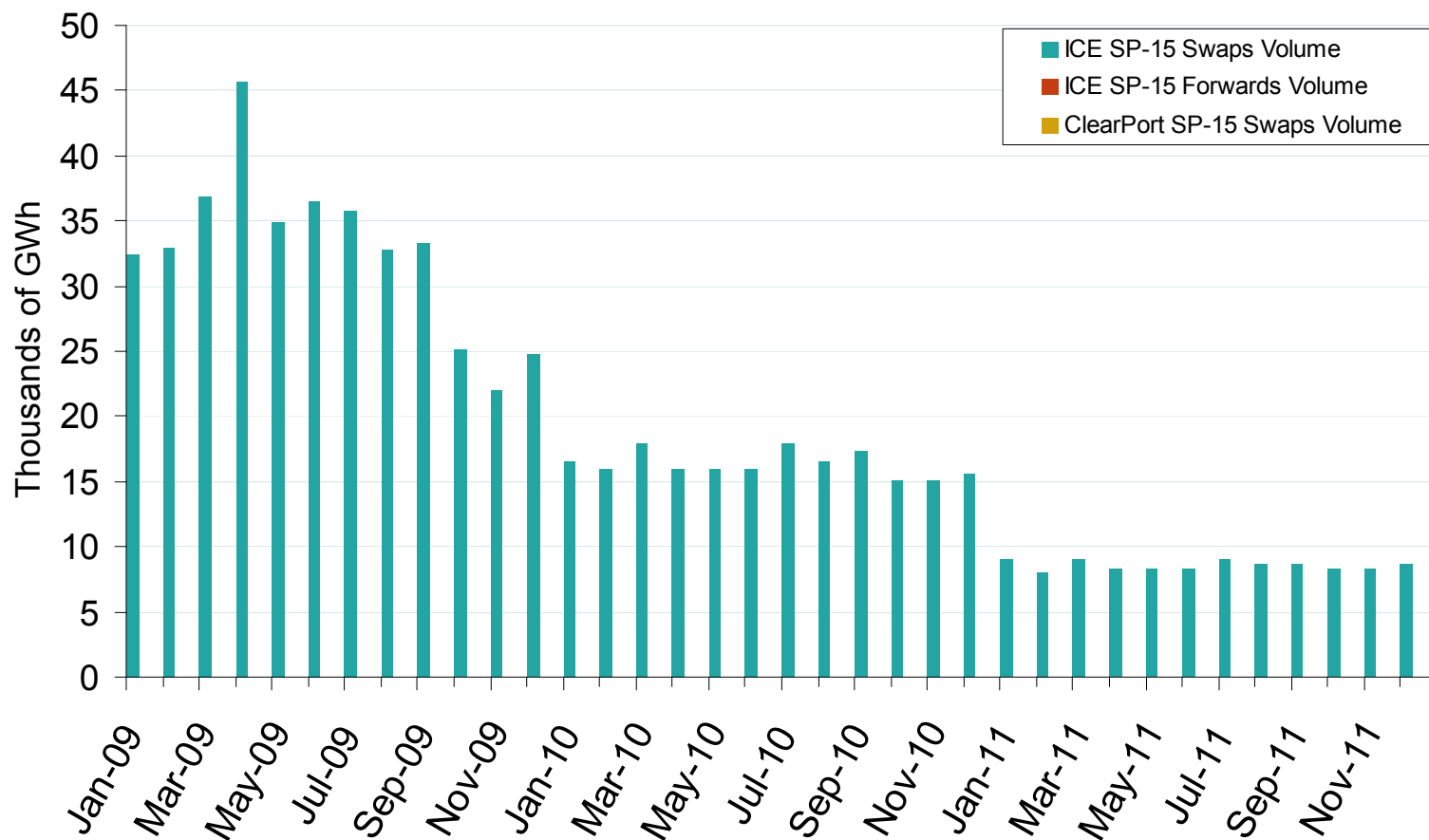
Federal Energy Regulatory Commission • Market Oversight • www.ferc.gov/oversight**Pacific Northwest Hydroelectric Production**

Source: Derived from USACE data reflecting the output of the 24 largest facilities.
Trend lines are 7-day moving averages.

Updated November 5, 2010

1105

SP-15 Forward and Swap Volumes



Source: Derived from *ICE* and *Nymex ClearPort*. *ICE* on-peak forward (physical) and swap (financial) volumes are for SP-15 and include monthly, dual monthly, quarterly, and calendar year contracts traded for each month. *Nymex ClearPort* on-peak swap (financial) volumes are for the SP-15 Hub traded by month.

Updated November 5, 2010

1008