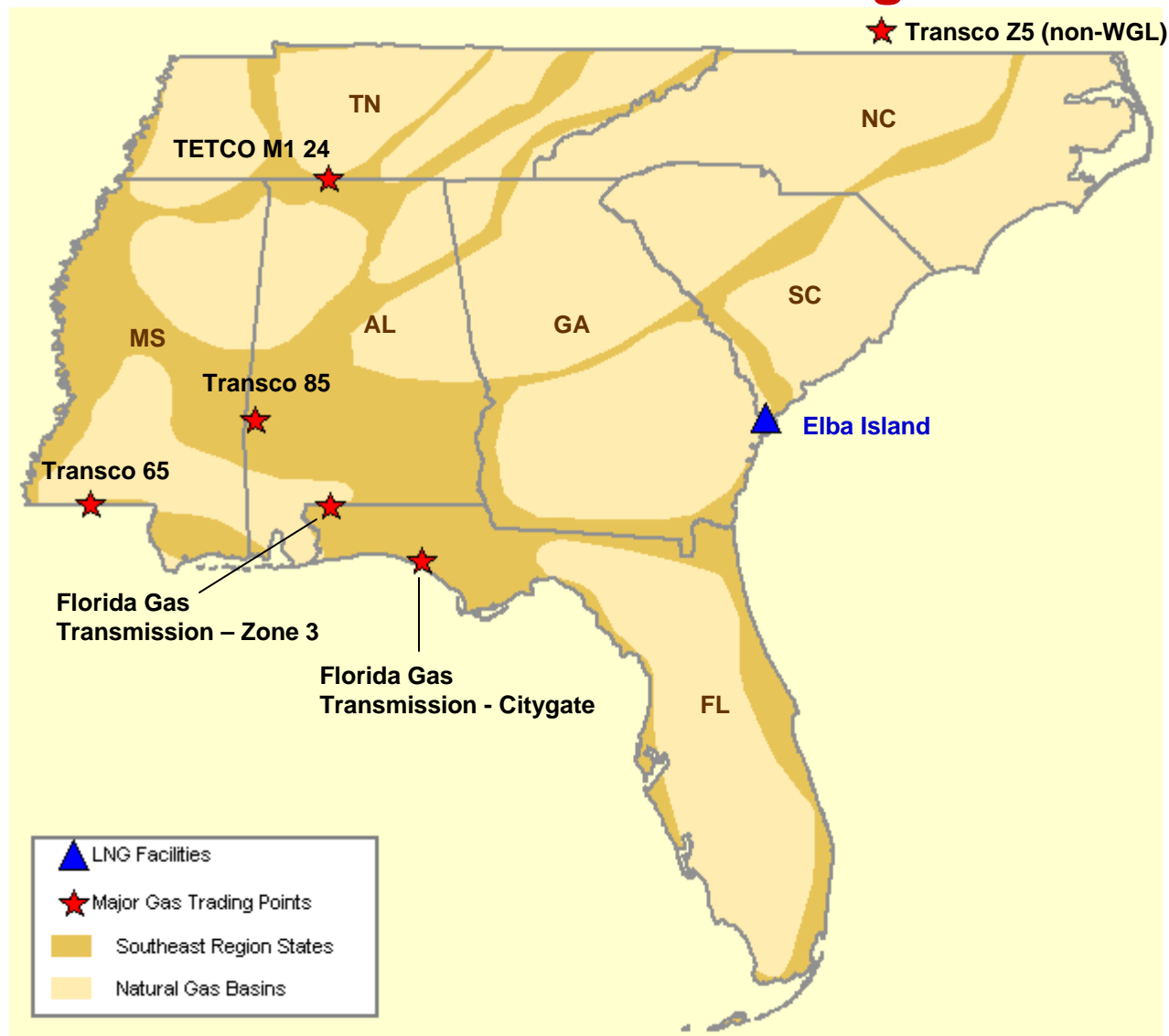


Southeast Gas Market: Overview and Focal Points

Federal Energy Regulatory Commission • Market Oversight • [www.ferc.gov/oversight](http://www.ferc.gov/oversight)

# Southeast Natural Gas Region



## Southeast Gas Market: Overview and Focal Points

Federal Energy Regulatory Commission • Market Oversight • [www.ferc.gov/oversight](http://www.ferc.gov/oversight)

### OVERVIEW

#### Market Description

Industrial process requirements and power consumption are the fundamental drivers of the Southeast gas market. Florida is the biggest market, accounting for about 35 percent of overall regional demand; the power sector comprises more than 86 percent of Florida's total demand. Overall storage capacity is the lowest of any region in the U.S.; regional storage facilities are concentrated in Mississippi. The lack of market area storage means that pipeline companies must issue notices warning customers to closely match their scheduled gas volumes with actual gas usage at times and this can result in higher basis. LNG and pipeline-related infrastructure improvements, however, have augmented regional supply diversification and altered traditional basis relationships. Over 6 Bcfd of pipeline capacity was added between 2008 and first quarter 2009 to better link shale Texas and Oklahoma production with premium Southeast markets. Many of these new pipelines terminate at Transco station 85 at the Alabama and Mississippi border. As a result, Gulf and Southeast basis relationships have tightened. Principal gas supply sources include: shallow and deepwater Gulf offshore locations, various Gulf onshore locations, coalbed methane resources in the Black Warrior Basin, and imports from the Elba Island LNG terminal. Unconventional shale gas supply from South Texas and South Oklahoma is now available to the southeast market via new pipelines such as the Gulf Crossing Pipeline and Mid Continent Express.

#### Geography

States covered: Alabama, Florida, Georgia, Mississippi, North Carolina, South Carolina, and Tennessee.

#### Major Trading Hubs

Florida Gas Transmission Zone 3, Texas Eastern M1, Transco Station 65, Transco Station 854, Transco Zone 5 (non-WGL), and Florida Gas Transmission Citygate\*.

\*Florida Citygates data are not reported on the Intercontinental Exchange, this hub data are sourced from Gas Daily.

## Southeast Gas Market: Overview and Focal Points

Federal Energy Regulatory Commission • Market Oversight • [www.ferc.gov/oversight](http://www.ferc.gov/oversight)

### Pipeline Flows

#### Average Daily Deliveries into Florida

2005: 2.2 Bcf/d

2006: 2.5Bcf/d

2007: 2.6 Bcf/d

2008: 2.6 Bcf/d

2009: 2.7 Bcf/d (Jan-Jun)

Major Pipelines: Florida Gas Transmission, Gulfstream Natural Gas System, Southern Natural Gas Company, Texas Eastern Transmission and Transcontinental Gas Pipeline, Gulf South Pipeline and Southeast Supply Header.

#### Average Daily Deliveries on Southern Natural Gas - Segment South of Franklinton

2005: 0.8 Bcf/d

2006: 1.0 Bcf/d

2007: 1.0 Bcf/d

2008: 1.2 Bcf/d

2009: 1.1 Bcf/d (Jan-June)

## Southeast Gas Market: Overview and Focal Points

Federal Energy Regulatory Commission • Market Oversight • [www.ferc.gov/oversight](http://www.ferc.gov/oversight)

### Pipeline Flows (continued)

#### Average Daily Deliveries through Texas Eastern M1 @ the Kosciusko

2005: 0.9 Bcf/d  
2006: 0.9 Bcf/d  
2007: 1.1 Bcf/d  
2008: 1.1 Bcf/d  
2009: 1.3 Bcf/d (Jan-June)

#### Average Daily Deliveries through Transcontinental Station 60

2005: 1.7 Bcf/d  
2006: 1.7 Bcf/d  
2007: 1.8 Bcf/d  
2008: 1.6 Bcf/d  
2009: 1.6 Bcf/d (Jan-June)

### Imports and Exports

#### Average Daily Sendout at the Elba Island LNG terminal

2005: 0.3 Bcf/d  
2006: 0.4 Bcf/d  
2007: 0.4 Bcf/d  
2008: 0.3 Bcf/d  
2009: 0.4 Bcf/d (Jan-June)

Major Importers: BG LNG and Marathon Oil are the principal importers of LNG at Elba Island. Re-gasified LNG is currently transported into the Southeast via the Southern Natural Gas pipeline.

### Contact Information

For specific issues regarding the Southeast Natural Gas Region please contact the following analyst:

Kamaria Martin – [kamaria.martin@ferc.gov](mailto:kamaria.martin@ferc.gov)

## Southeast Natural Gas Market: Yearly Hub Prices

Federal Energy Regulatory Commission • Market Oversight • [www.ferc.gov/oversight](http://www.ferc.gov/oversight)**Annual Average Spot Hub Prices**

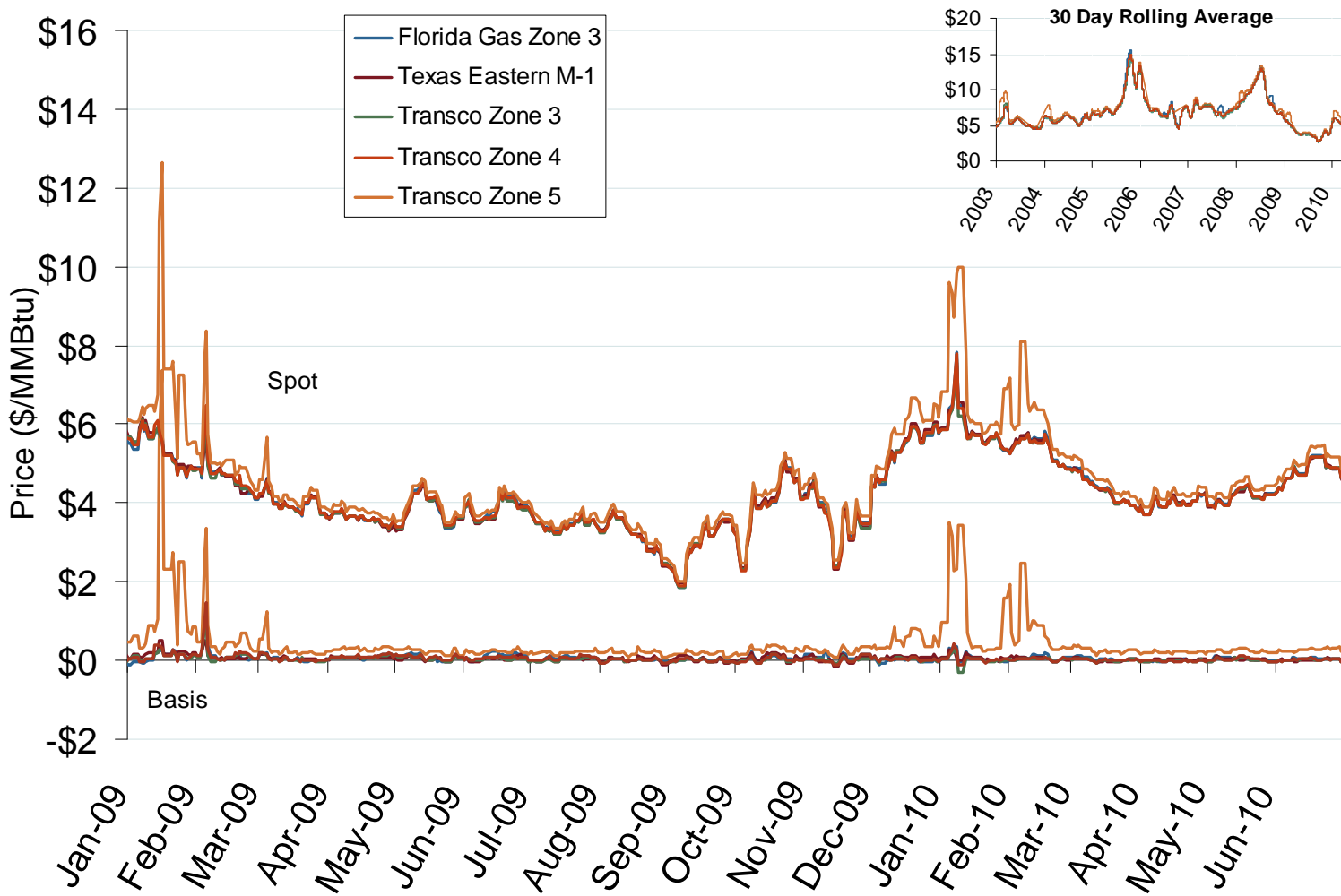
Annual Average Day Ahead Prices (\$/MMBtu)						
	2005	2006	2007	2008	2009	5-Year Avg
Henry Hub	\$8.69	\$6.74	\$6.94	\$8.85	\$3.92	\$7.01
Florida Gas Zone 3	\$9.25	\$7.01	\$7.32	\$9.13	\$3.98	\$7.34
Transco Station 65	\$8.98	\$6.84	\$7.05	\$8.92	\$3.96	\$7.15
Transco Zone 4	\$9.15	\$6.93	\$7.17	\$8.98	\$3.98	\$7.24
Transco Zone 5	\$9.39	\$7.13	\$7.41	\$9.46	\$4.33	\$7.56
Tetco M1	\$8.93	\$6.79	\$7.07	\$8.98	\$3.98	\$7.15

Source: Derived from *Platts* data.

Updated January 8, 2010

2054

## Southeastern Day-Ahead Hub Spot Prices and Basis



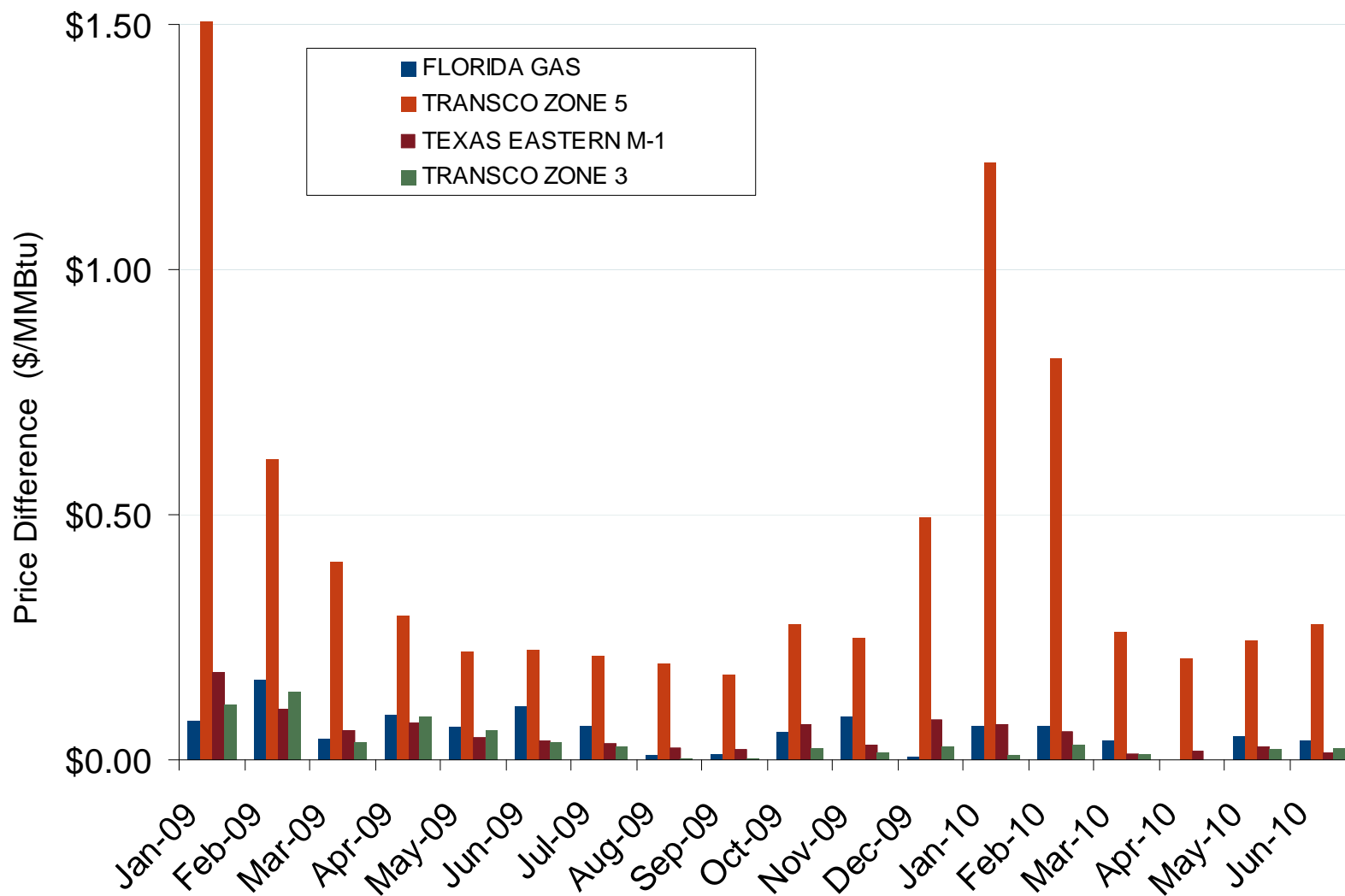
Source: Derived from *Platts* data.

Updated July 9, 2010

## Southeast Natural Gas Market: Average Basis to Henry Hub

Federal Energy Regulatory Commission • Market Oversight • [www.ferc.gov/oversight](http://www.ferc.gov/oversight)

## Southeastern Monthly Average Basis Value to Henry Hub

Source: Derived from *Platts* data.

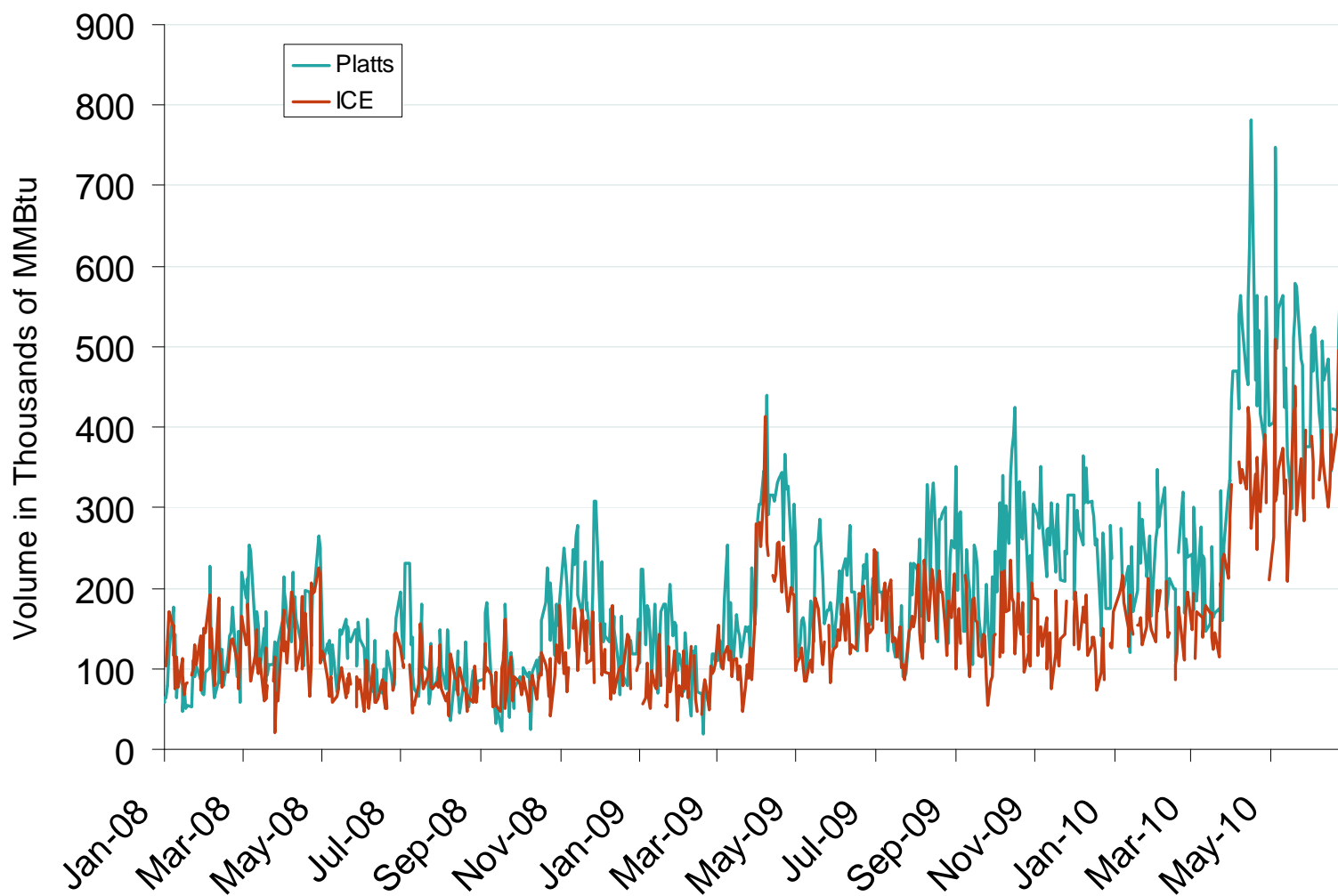
Updated July 9, 2010

2059

## Southeast Natural Gas Market: Trading Volumes at Texas Eastern M-1 Kosi

Federal Energy Regulatory Commission • Market Oversight • [www.ferc.gov/oversight](http://www.ferc.gov/oversight)

## Published and Traded Daily Spot Volumes at Texas Eastern M-1 Kosi

Source: Derived from *Platts* and *ICE* data.

Updated July 9, 2010

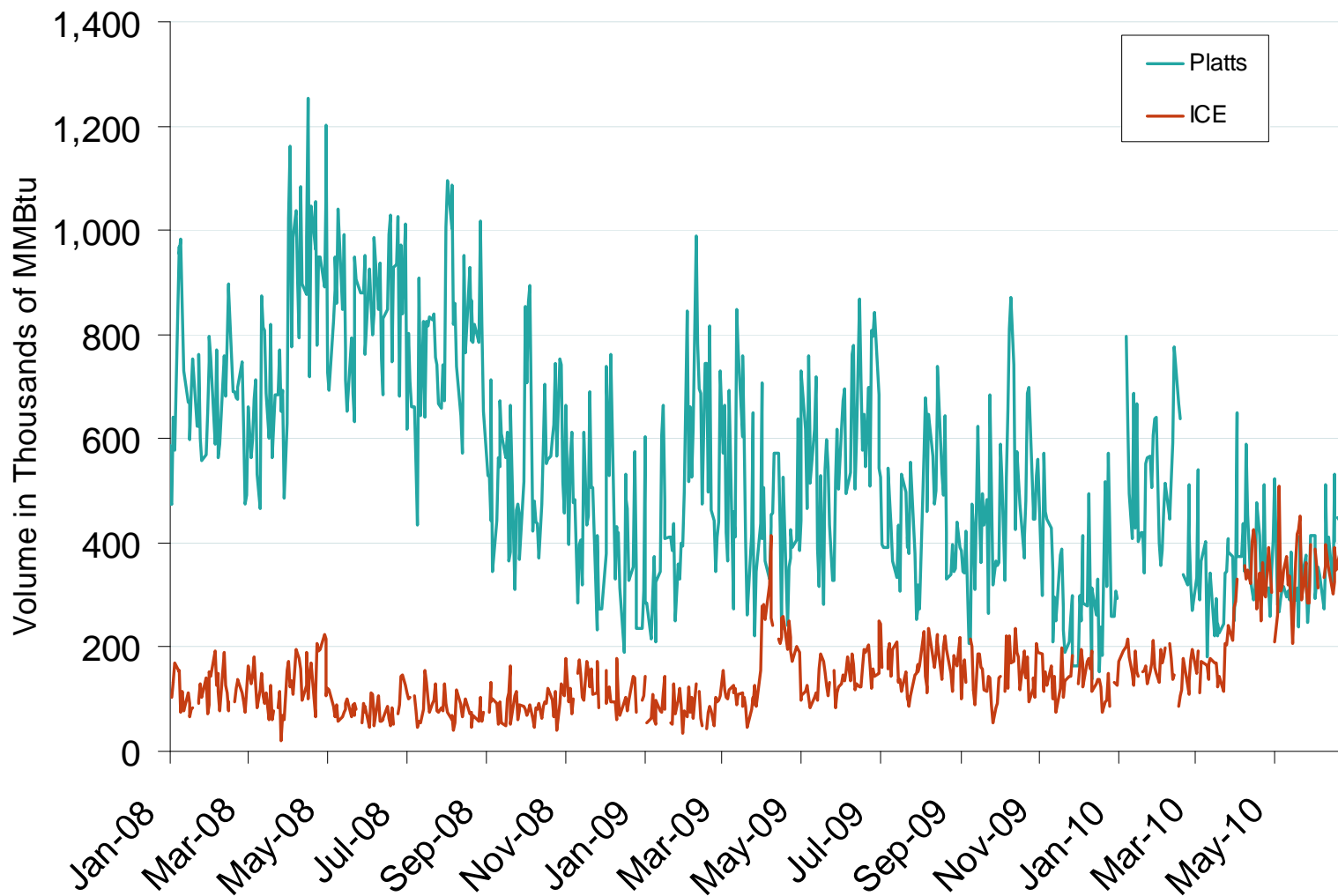
2153



## Southeast Natural Gas Market: Trading Volumes at Transco Zone 3

Federal Energy Regulatory Commission • Market Oversight • [www.ferc.gov/oversight](http://www.ferc.gov/oversight)

## Published and Traded Daily Spot Volumes at Transco Zone 3

Source: Derived from *Platts* and *ICE* data.

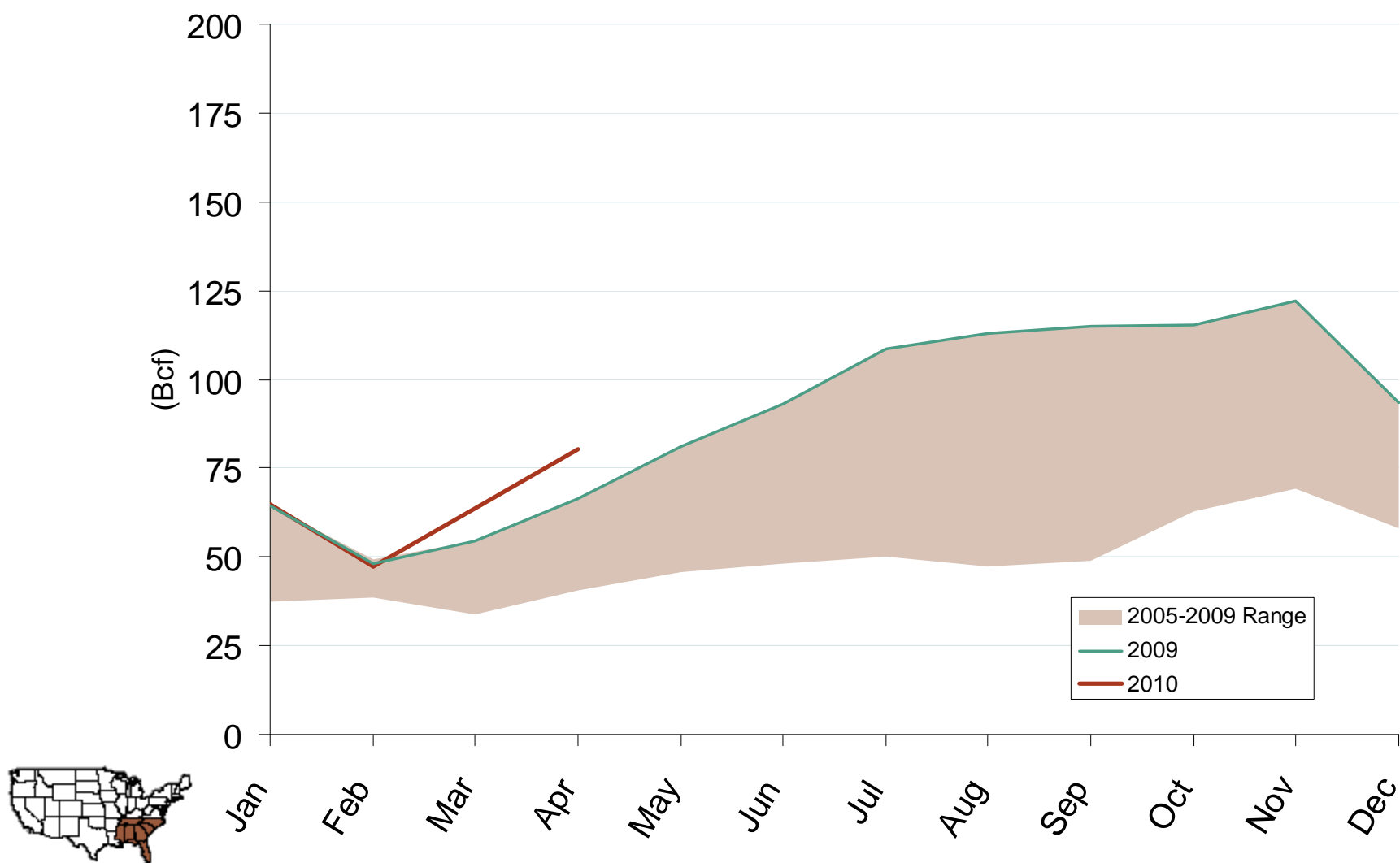
Updated July 9, 2010

2153

## Southeast Natural Gas Market: Storage Inventory

Federal Energy Regulatory Commission • Market Oversight • [www.ferc.gov/oversight](http://www.ferc.gov/oversight)

## Southeast Region Underground Working NG In Storage

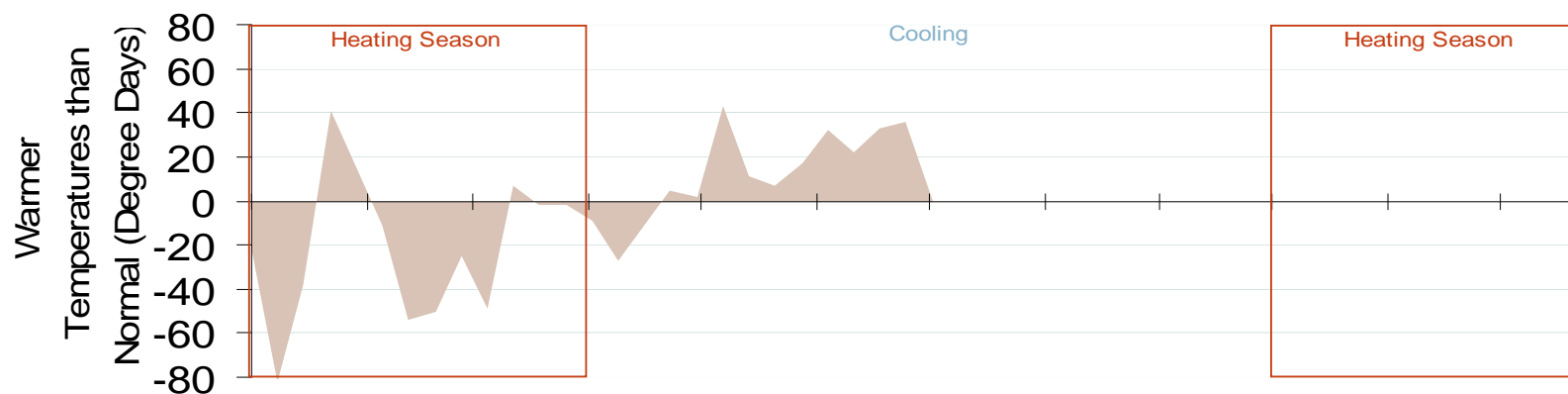
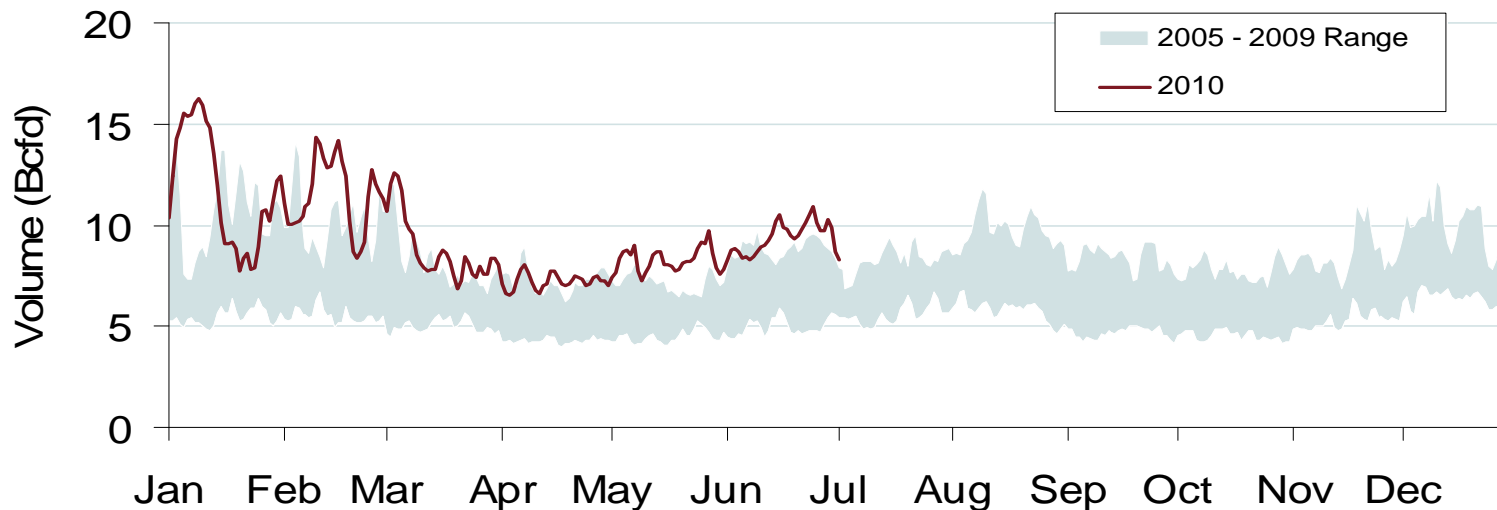


Source: Derived from EIA data. Due to a change in methodology, as of October '09 VA is no longer in the SE region.

Updated July 9, 2010

2065

## Daily Southeast Natural Gas Demand All Sectors



Source: Derived from Bentek Energy and Weekly NOAA data.

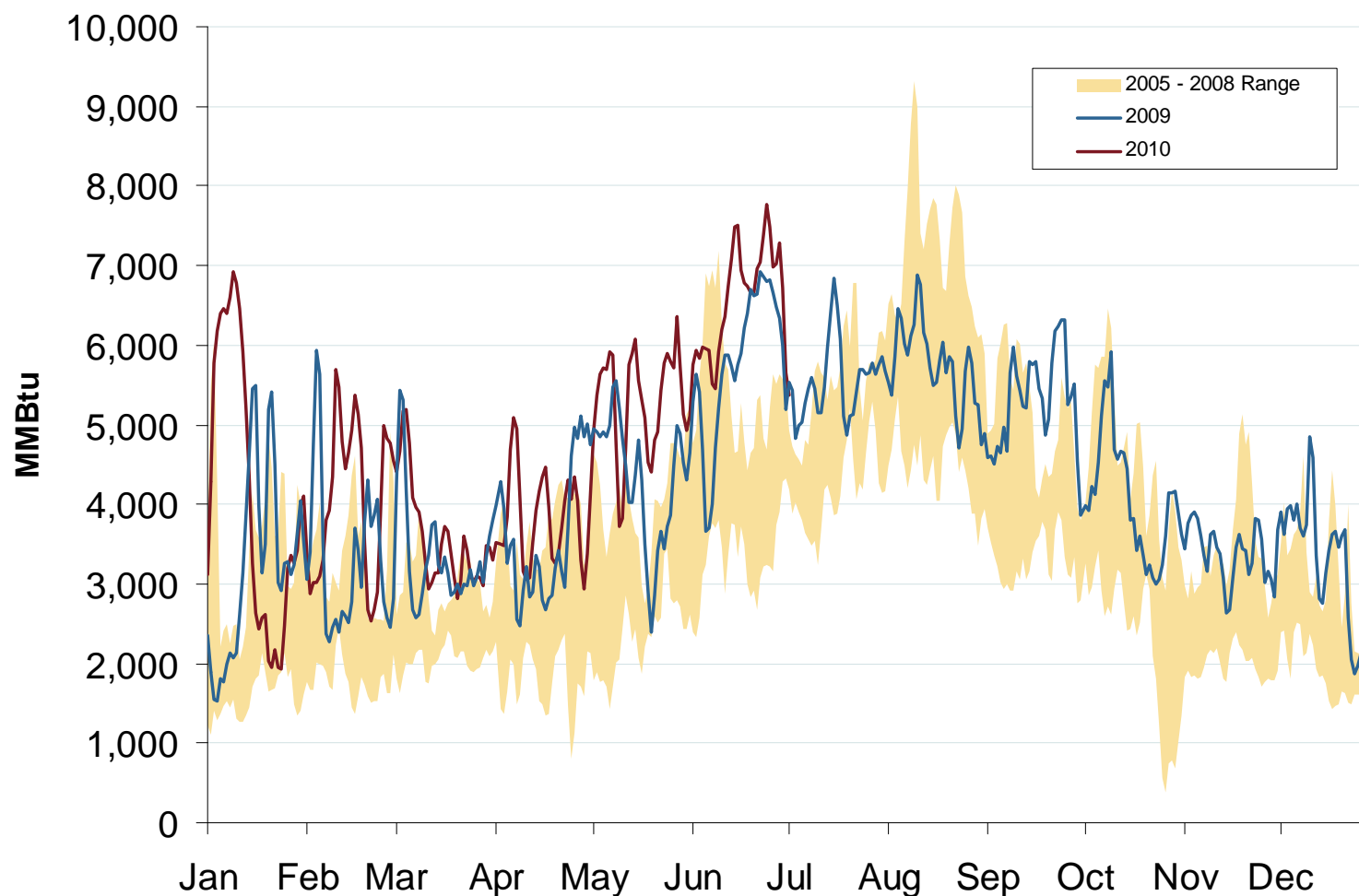
Updated July 9, 2010

23050

## Southeast Natural Gas Market: NG Consumption for Power Generation

Federal Energy Regulatory Commission • Market Oversight • [www.ferc.gov/oversight](http://www.ferc.gov/oversight)

# Southeast Natural Gas Consumption for Power Generation



Source: Derived from Bentek Data

Updated July 9, 2010

23052

## Southeast Infrastructure Additions

- **ETP's Tiger Pipeline** – Will add 2.6 Bcfd of takeaway capacity from the Haynesville, Bossier Sands, and Fort Worth supply basins into the Perryville Hub in northern LA. Will interconnect with Texas Gas, Tennessee, TETCO, Trunkline, ANR and SESH.
- **Texas Gas Greenville Lateral Stage 2 Expansion** - adds 250 MMcfd of capacity in Mississippi through additional compression, giving Fayetteville shale producers increased access to markets served by ANR, Trunkline, Sonat and TETCO.
- **CenterPoint CP Line Phase IV** - Stage 4 compression expansion adds 340 MMcfd of capacity to the CP Line.
- **Regency Energy Partners Haynesville Expansion and Red River Lateral** - This 1.2 Bcfd intrastate line is designed to move Haynesville shale gas to interconnects with Texas Gas, Tennessee, Trunkline, Sonat, Columbia Gulf and ANR at the Perryville Hub.

