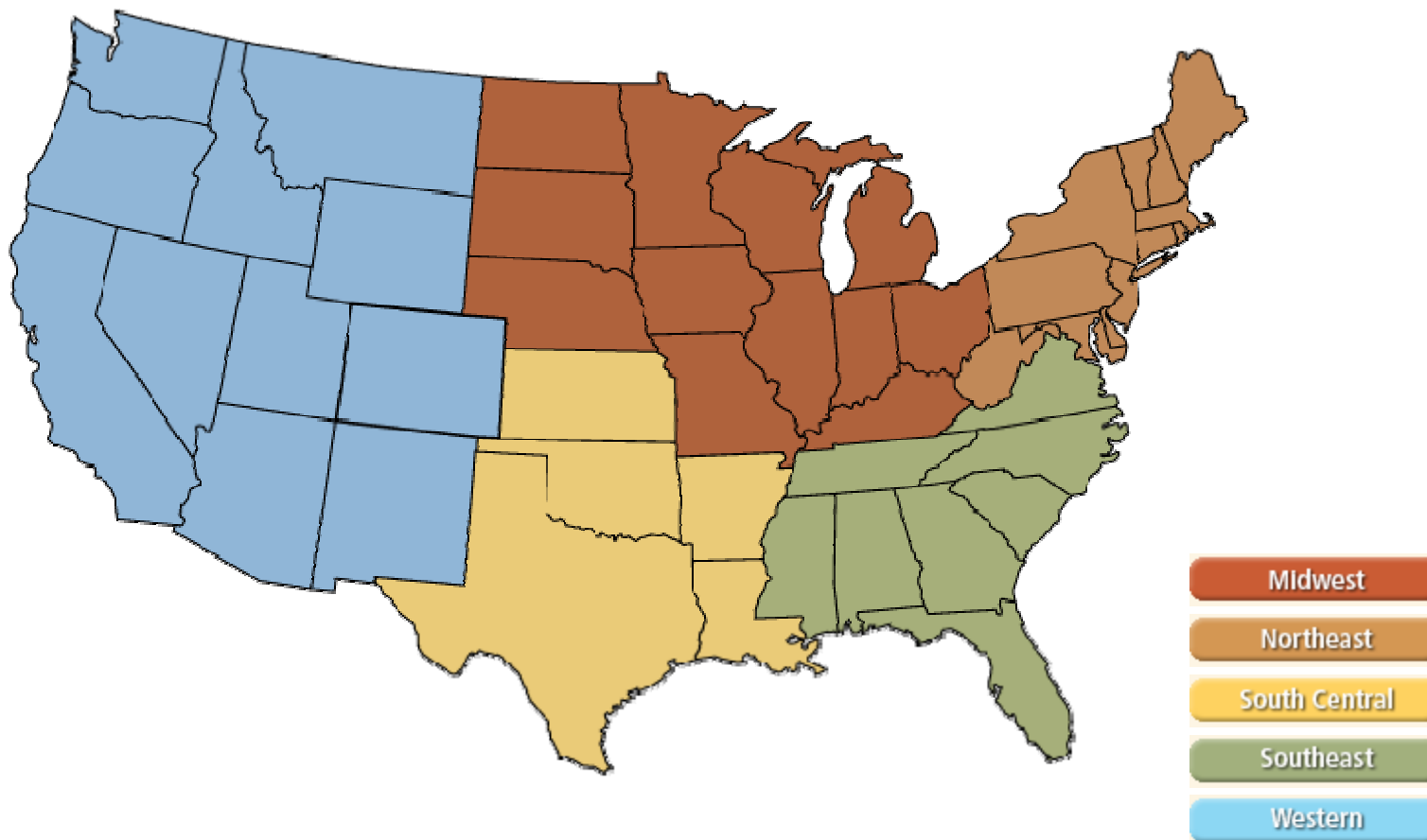
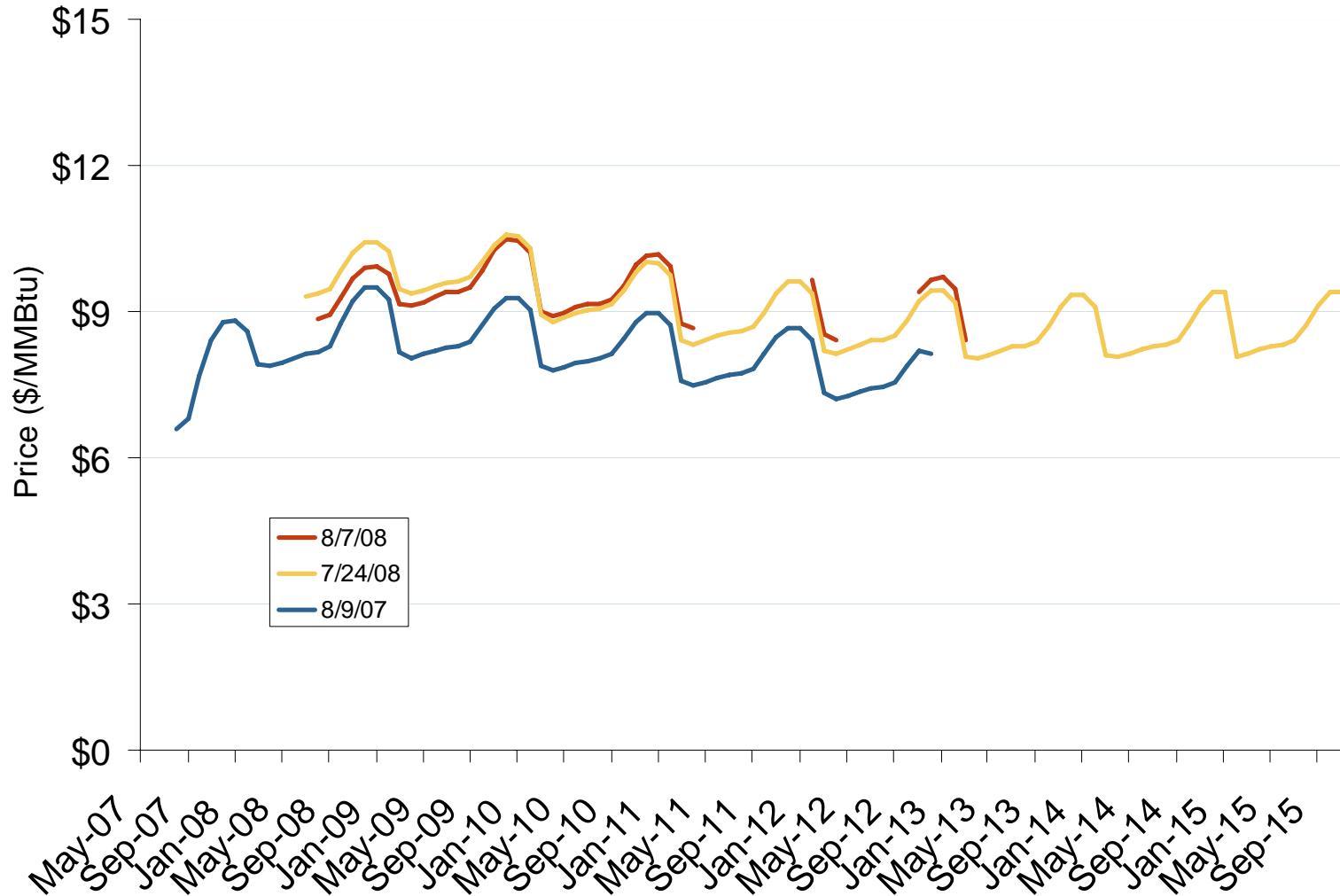


# Natural Gas Futures Trading Markets



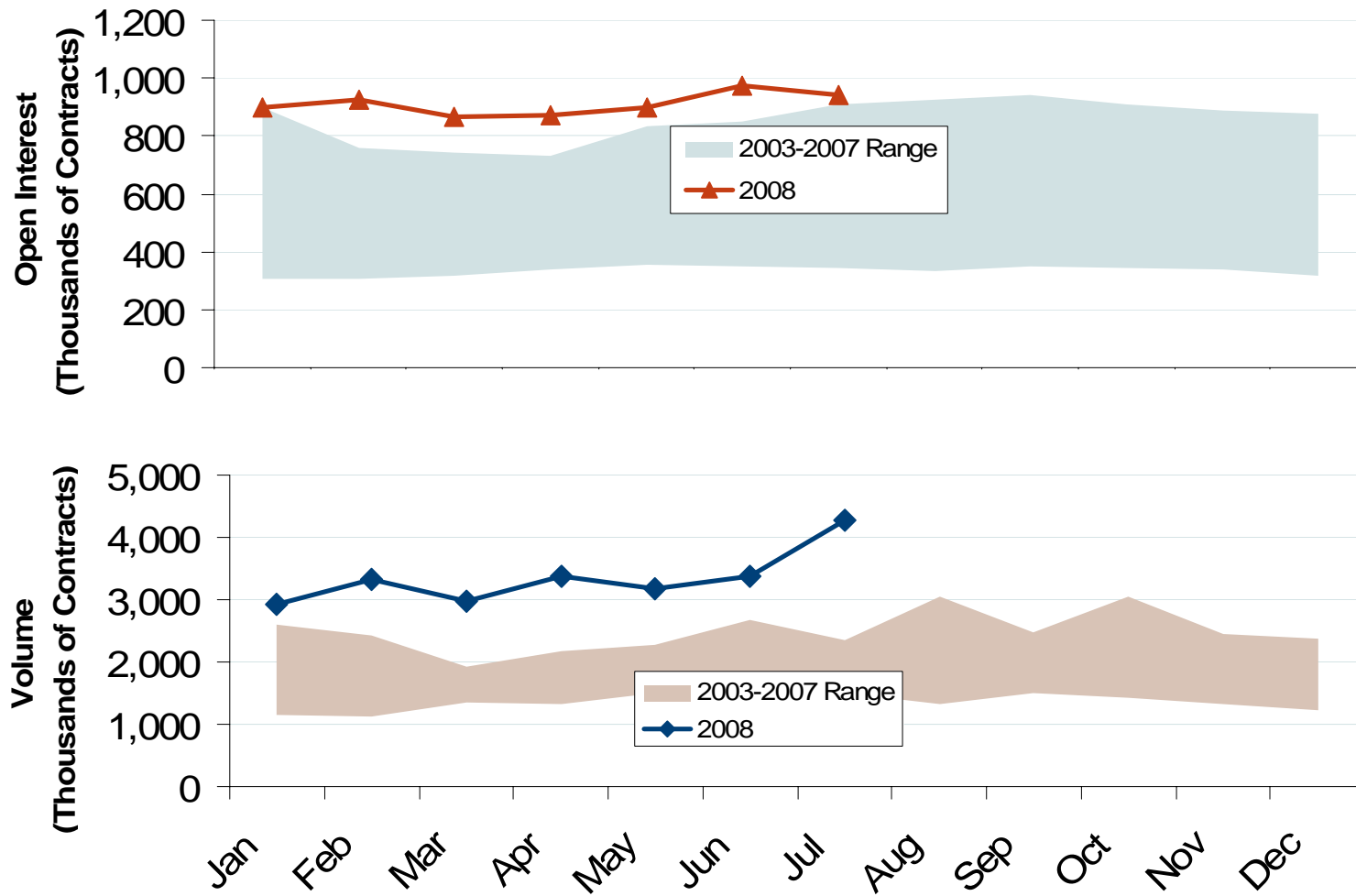
# NYMEX Natural Gas Forward Price Curve



Source: Derived from NYMEX data.

Updated August 14, 2008 2009

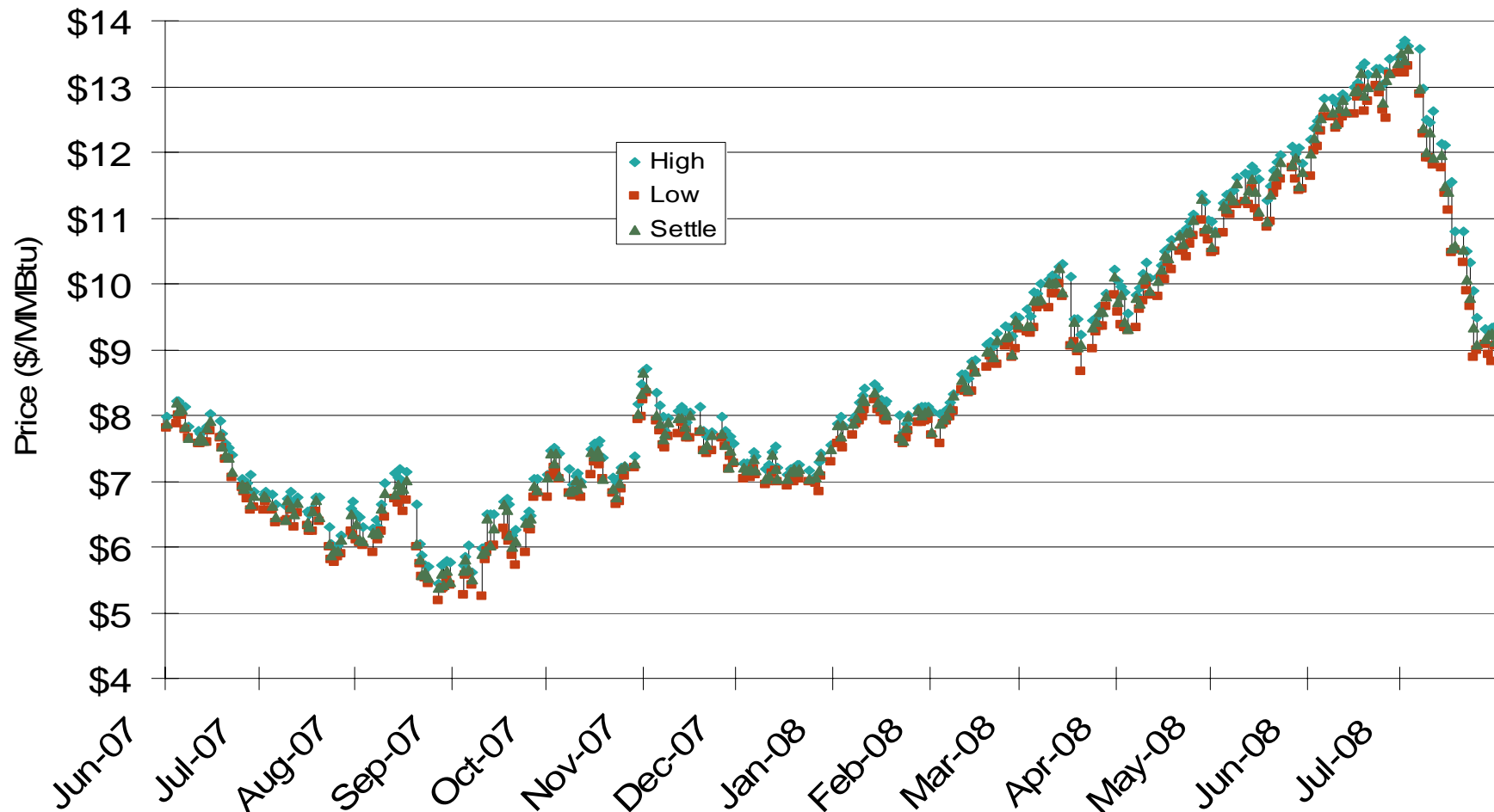
## NYMEX Natural Gas Futures Month-End Open Interest and Total Monthly Volume



Source: Derived from NYMEX data.

Updated August 14, 2008 2010

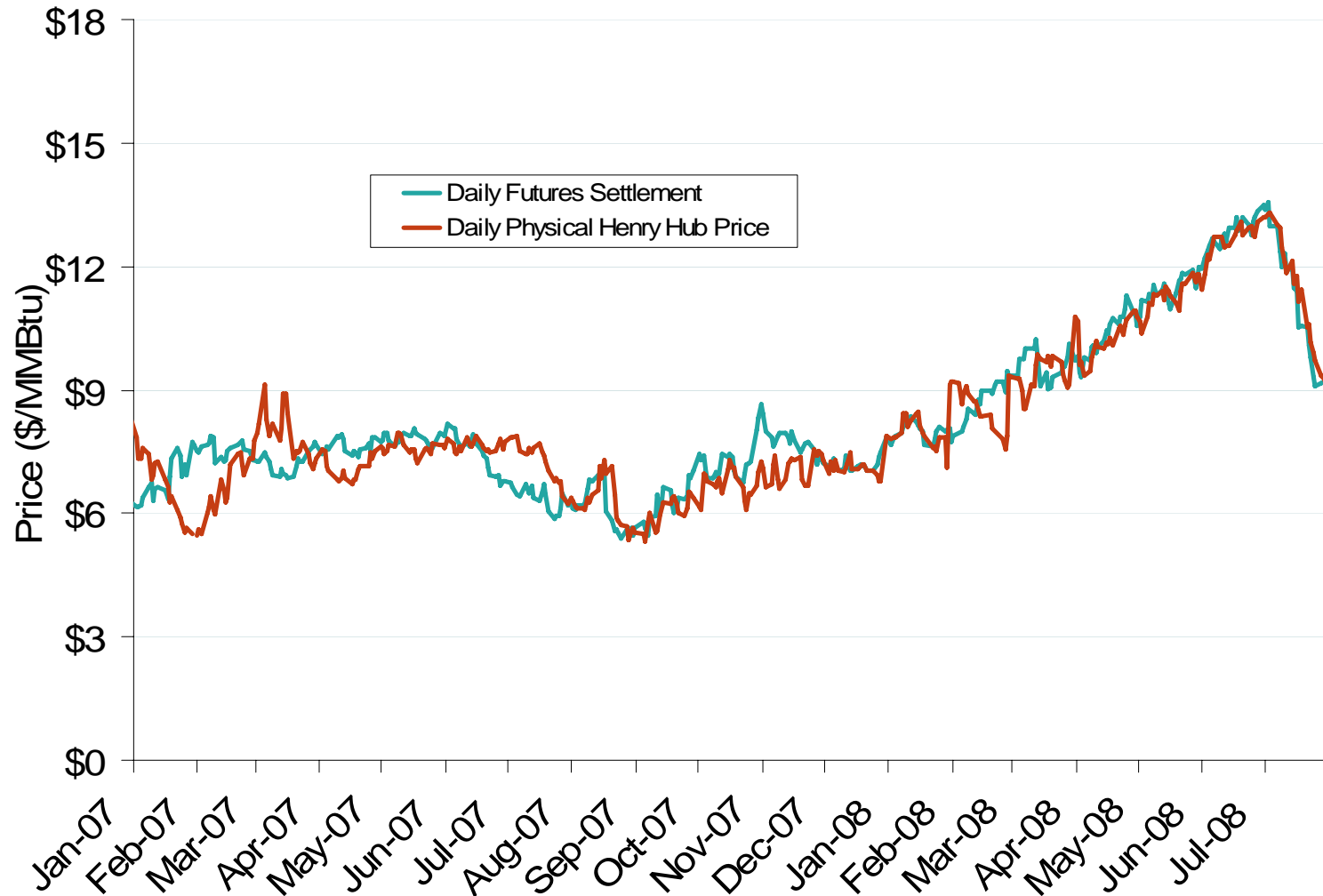
## NYMEX Natural Gas Futures Prompt Month Daily Settlement Price and Price Range



Source: Derived from NYMEX data.

Updated August 14, 2008 2086

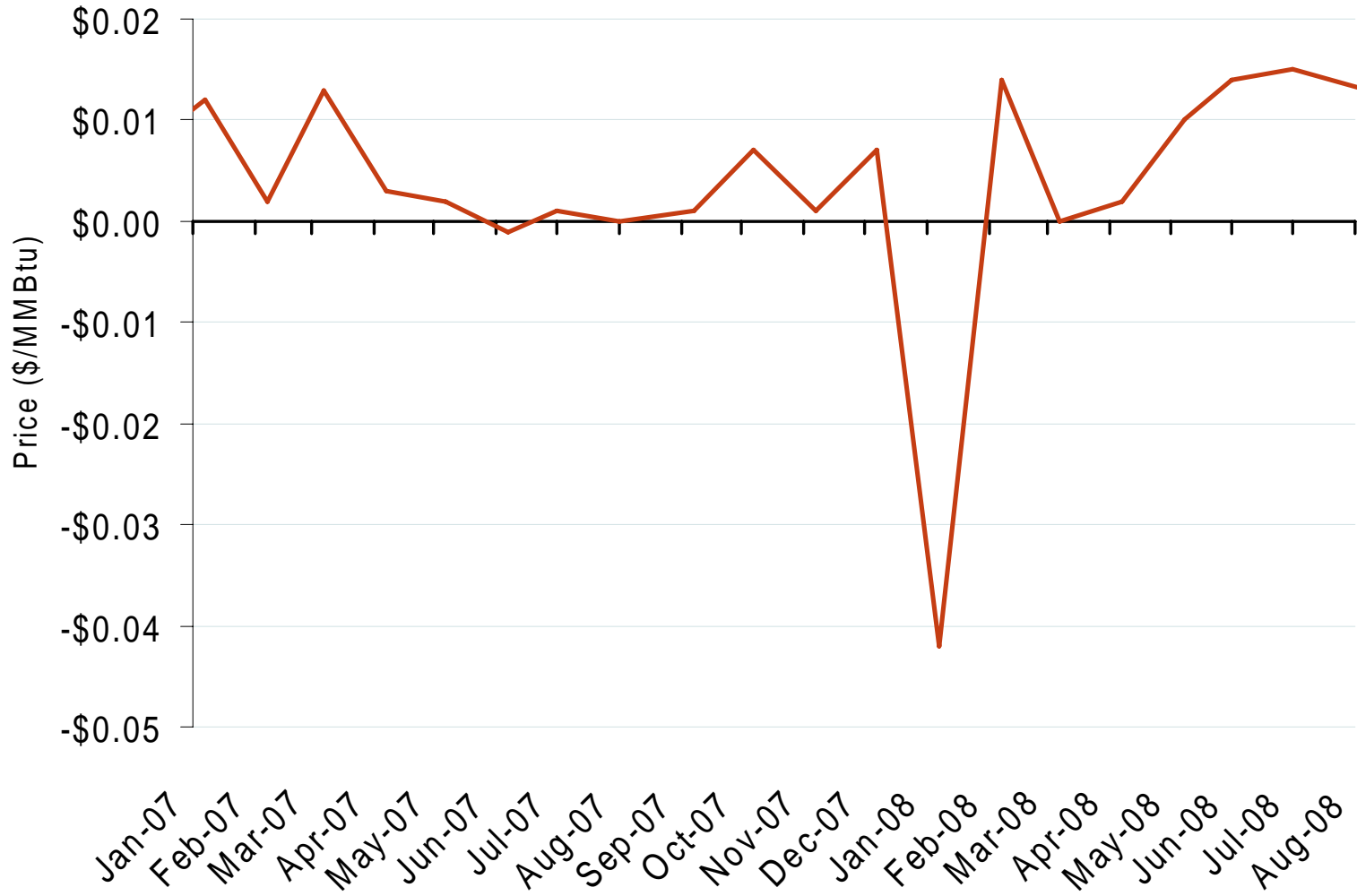
## Daily Physical Index Price and Daily Futures Settlement Price



Source: Derived from *Platts* and *Bloomberg* data.

Updated August 14, 2008 2087

## Deviation Between Monthly Physical Index and Monthly Futures Expiration Price at Henry Hub

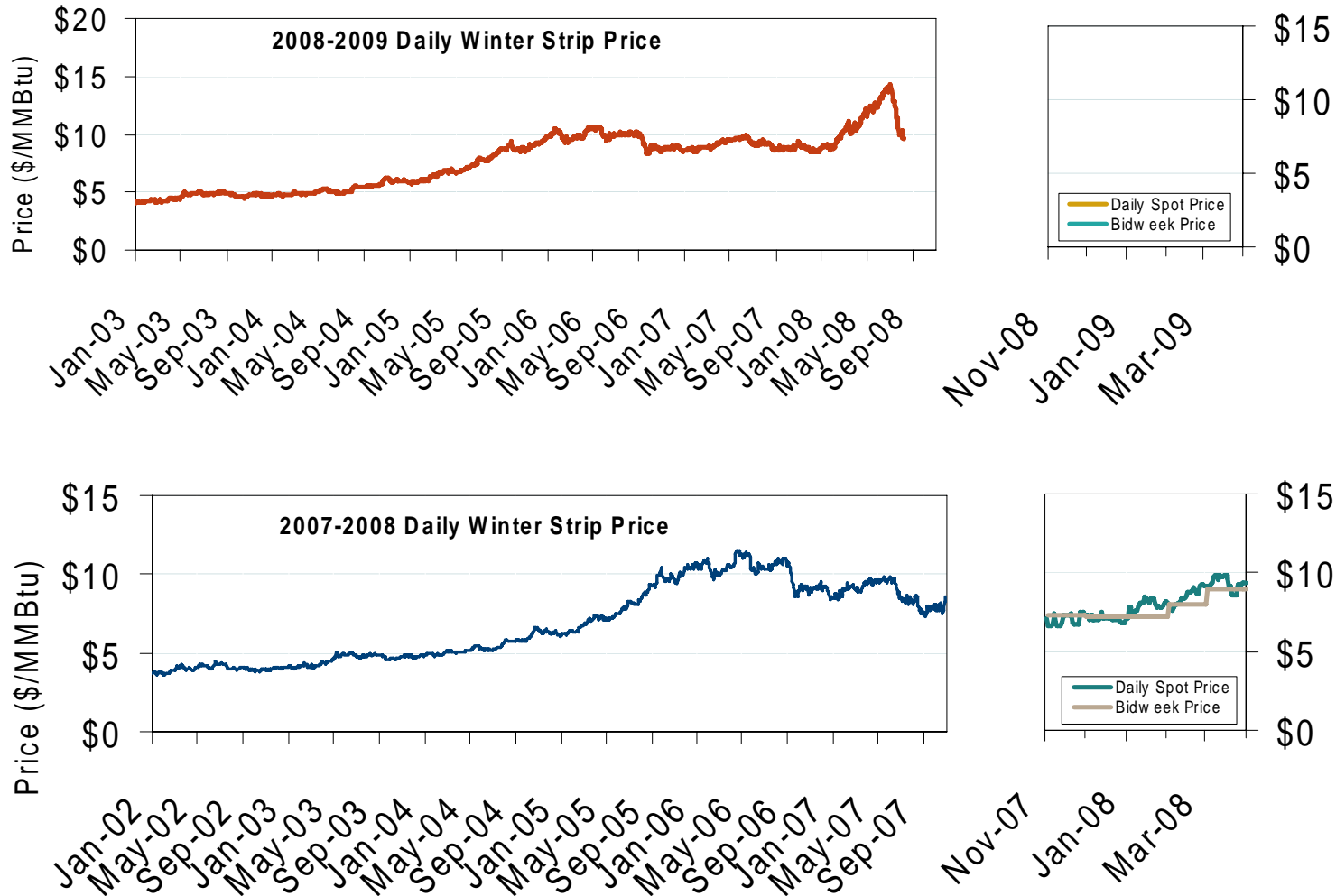


Source: Derived from *Platts* and *Bloomberg* data.

Updated August 14, 2008

2088

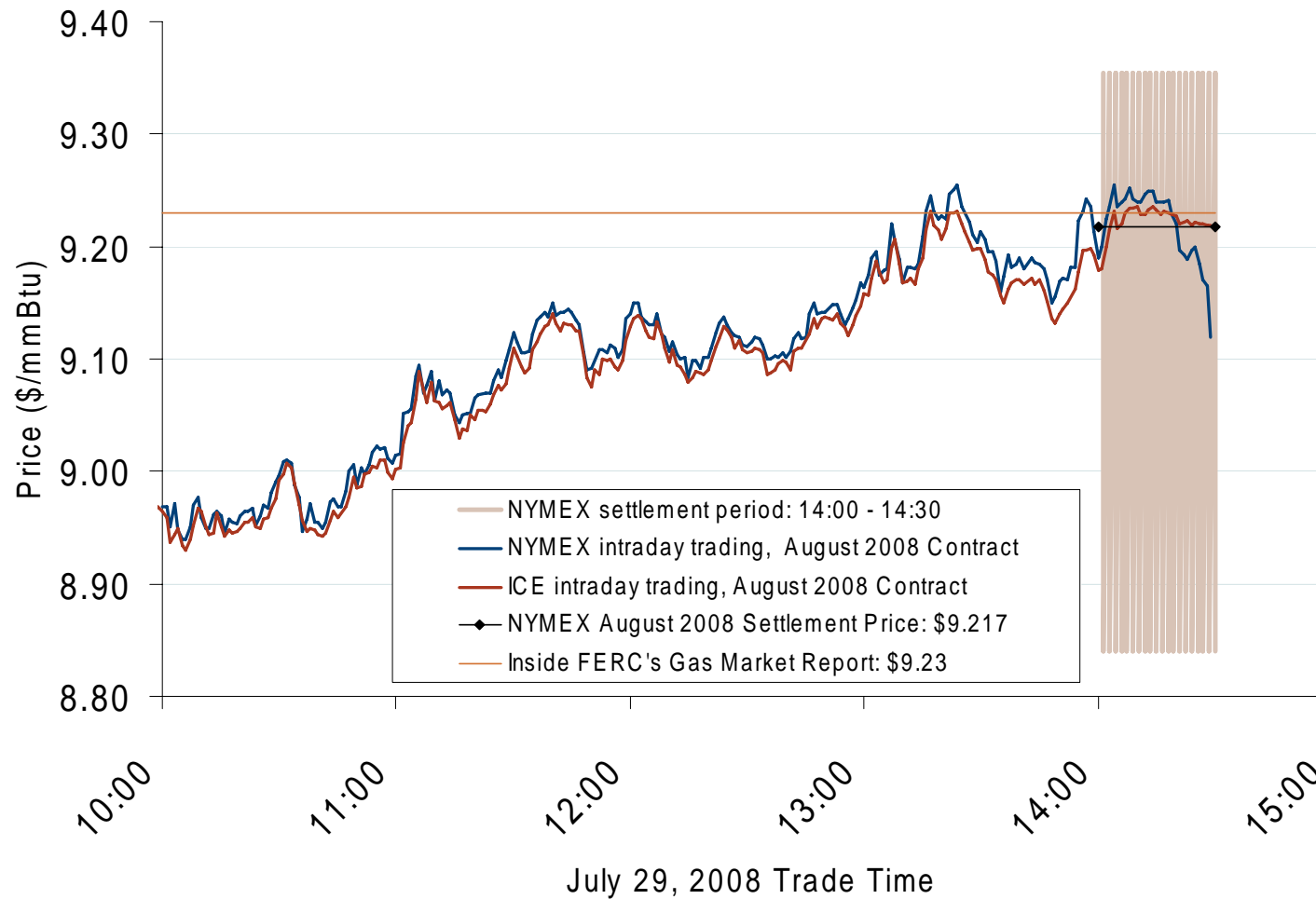
## Natural Gas Winter Futures Strip and Daily Henry Hub Spot and Bidweek Prices



Source: Derived from *Platts* and *Nymex* data.

Updated August 14, 2008

# August 2008 NYMEX and ICE Contract Final Settlement Day



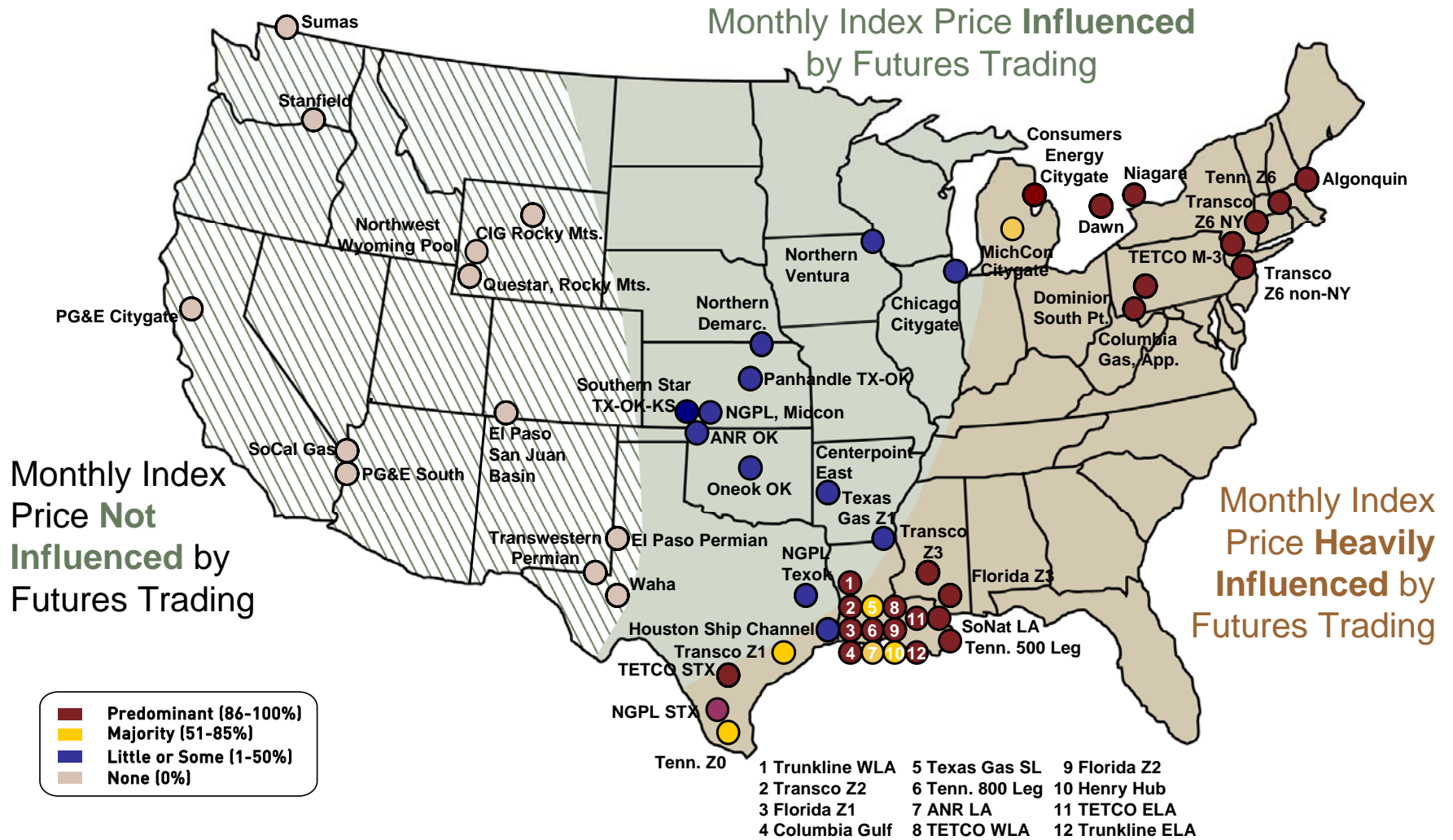
Source: Derived from *Nymex and ICE* data.

Updated August 12, 2008

2166



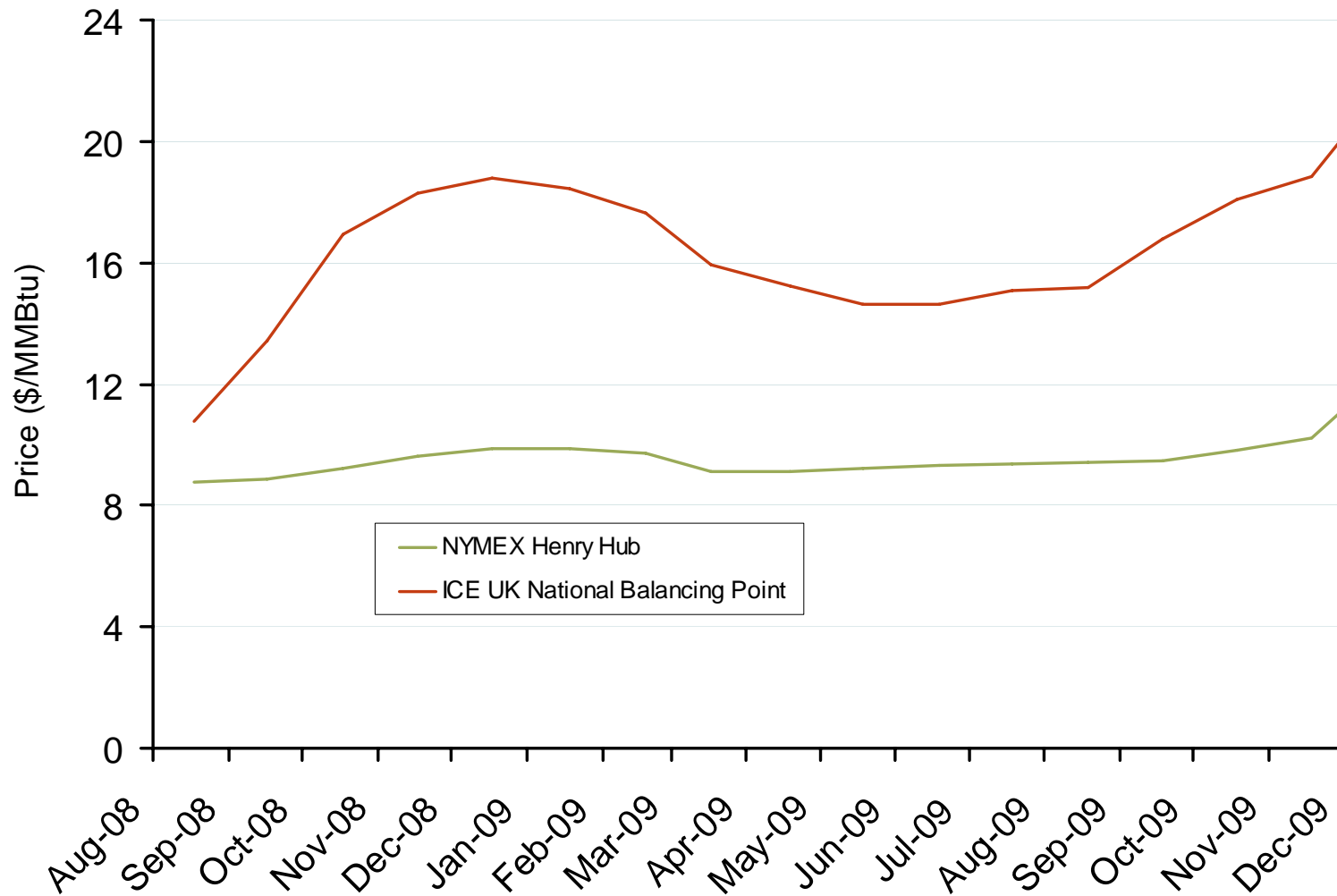
# Use of Physical Basis in Natural Gas Price Indices at Major Trading Points, 2008



Source: Derived from *Platts* data for January through March 2008 indices.

Updated May 6, 2008

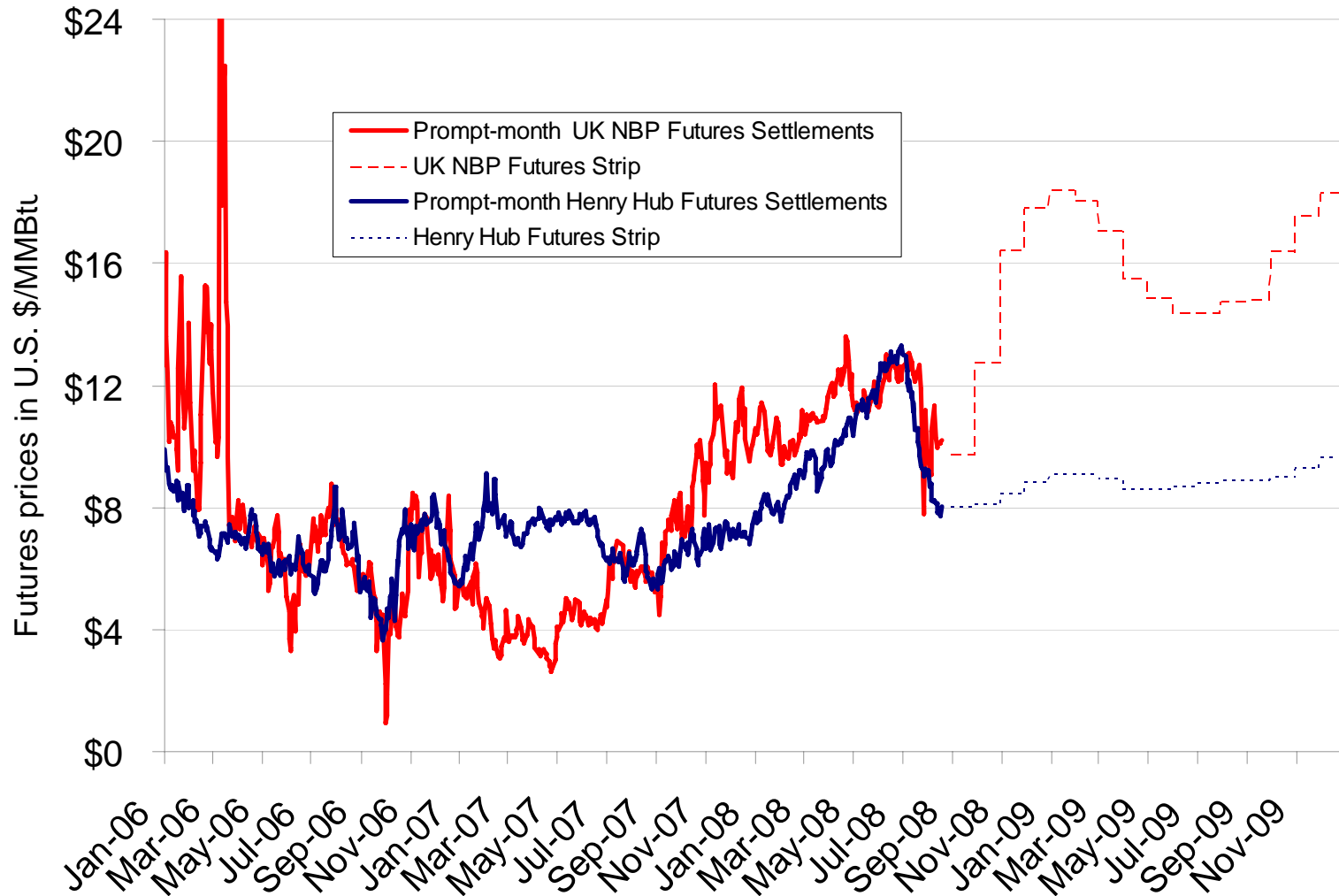
## NYMEX Henry Hub and ICE UK National Balancing Point Natural Gas Forward Price Curves



Source: Derived from NYMEX and ICE data.

Updated August 14, 2008 2170

## US and UK Gas Futures Prices



Source: Derived from NYMEX and ICE data.

Updated August 20, 2008

2177