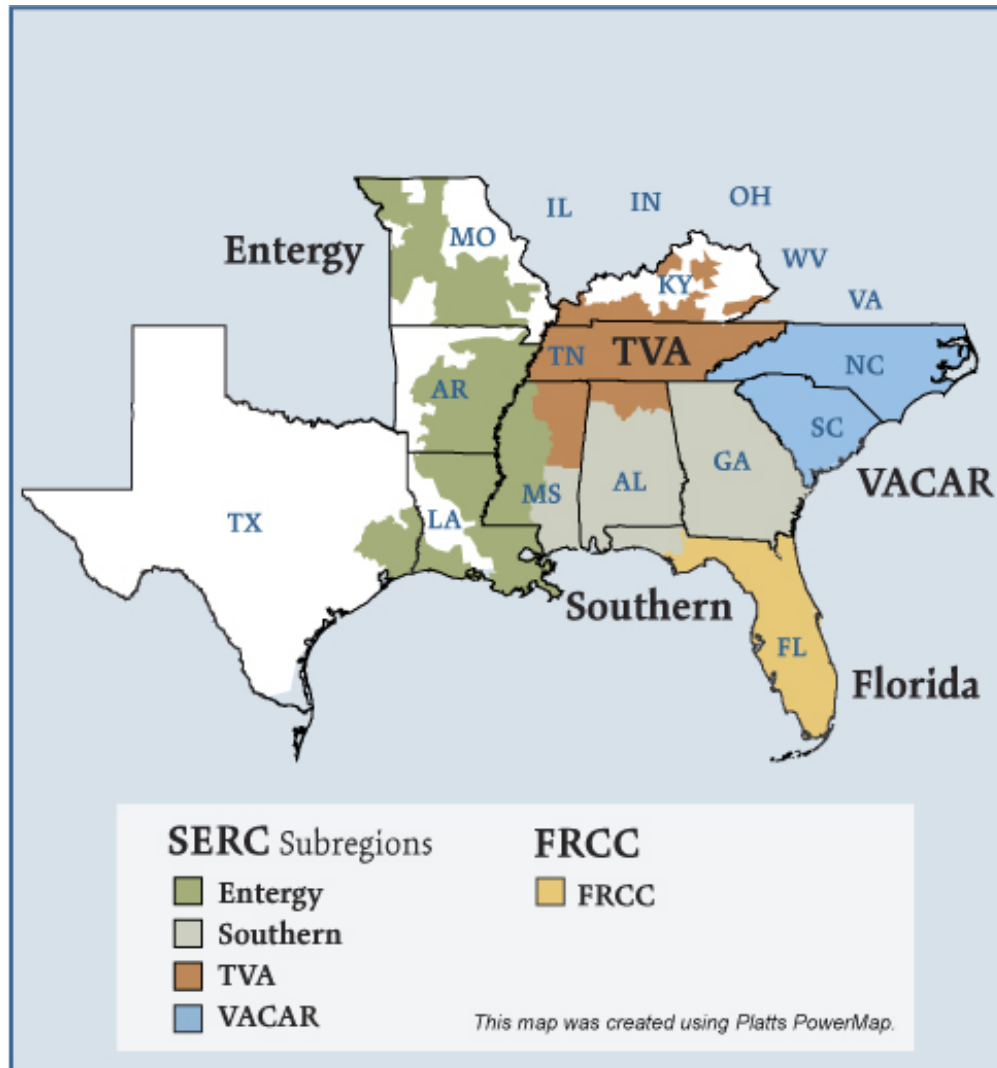


## Southeast Electric Regions



## Overview

### Market Description

Florida Reliability Coordinating Council (FRCC) and SERC Reliability Corporation (SERC) reliability regions minus the portions of SERC in the Midwest ISO (MISO) and in PJM.

### Geography

States covered: All or most of Florida, Arkansas, Louisiana, Mississippi, Alabama, Georgia, Tennessee, North Carolina, South Carolina and parts of Missouri, Kentucky and Texas.

Reliability region: Southeastern Electric Reliability Council (SERC) and Florida Reliability Coordinating Council (FRCC)

Balancing authorities: See list on page 5 and 6.

Hubs: Entergy, Southern, TVA

### RTO/ISO

None

### Generation/Supply

Marginal fuel type: Coal and natural gas

Generating capacity (summer 2006): 299,712 MW

Capacity reserve (summer 2006): 64,188 MW

Reserve margin (summer 2006): 27%

## Demand

All time peak demand: 237,100 MW (2005)

In summer of 2006, demand in parts of the region, such as the Southern Company service area, reached record levels on several occasions due to extremely hot weather.

Peak demand growth: -0.6% (2005–2006)

Summer Peak Demand (MW): 237,100 (2005) 235,524 (2006)

*Source:* Derived from *SERC* and *FRCC* data and discussions.

## Prices

Annual Average of Daily Bilateral Day Ahead On-Peak Prices

Platts “Into Southern” Index

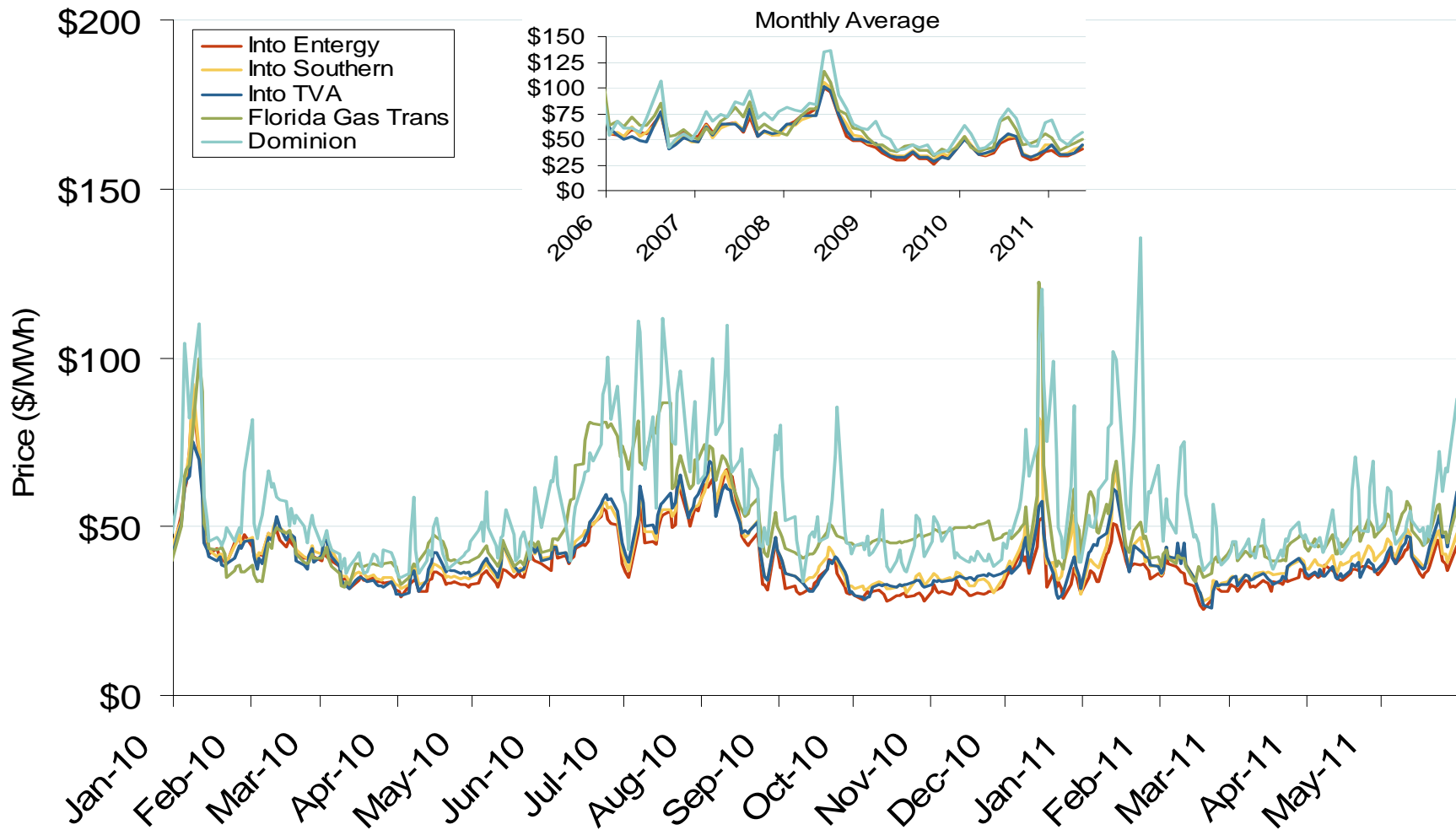
2004: \$48.64/MWh

2005: \$70.84/MWh

2006: \$55.50/MWh

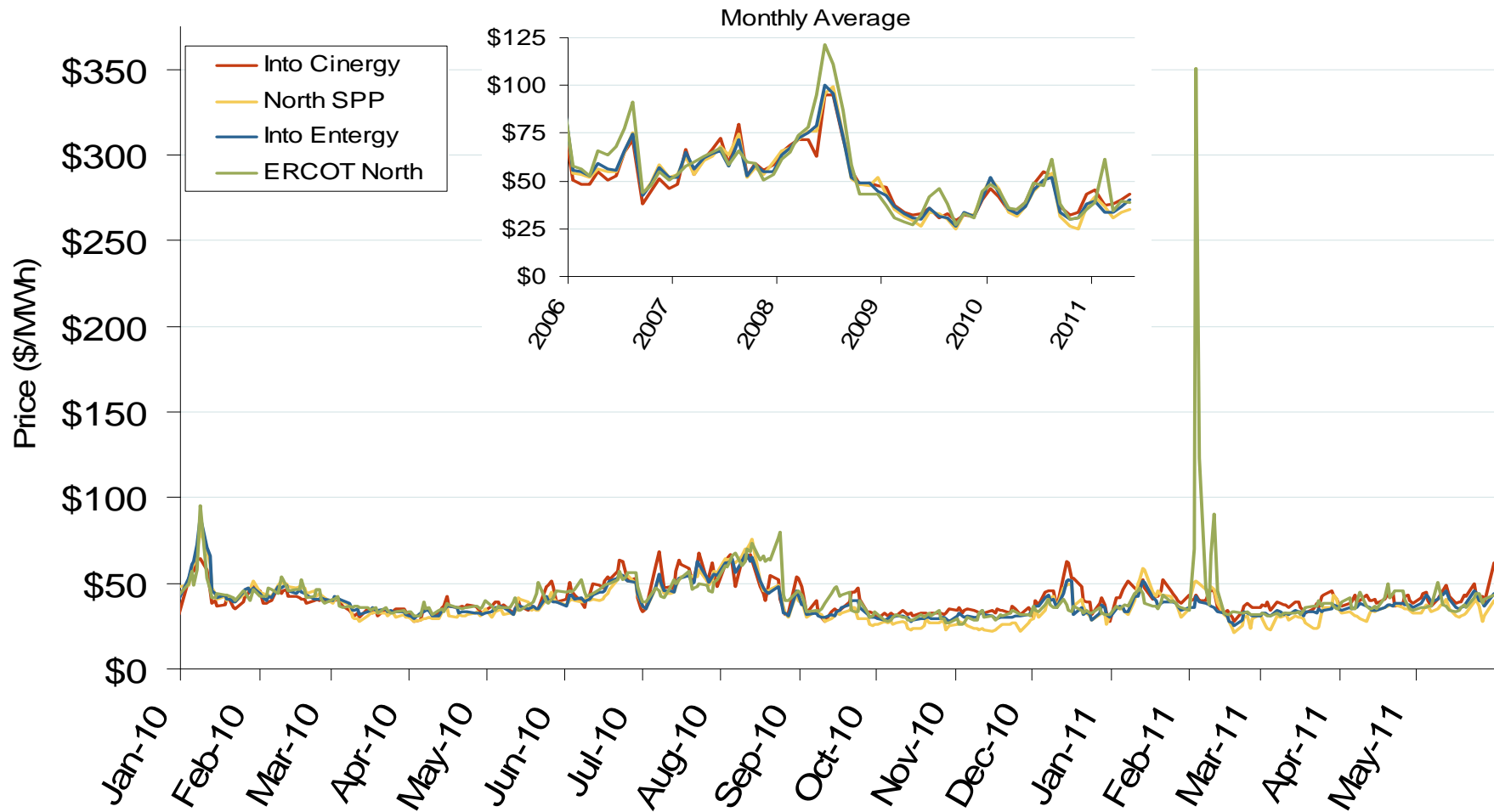
2007: \$59.10/MWh

# Southeastern Daily Bilateral Day-Ahead On-Peak Prices



Source: Derived from *Platts* data.

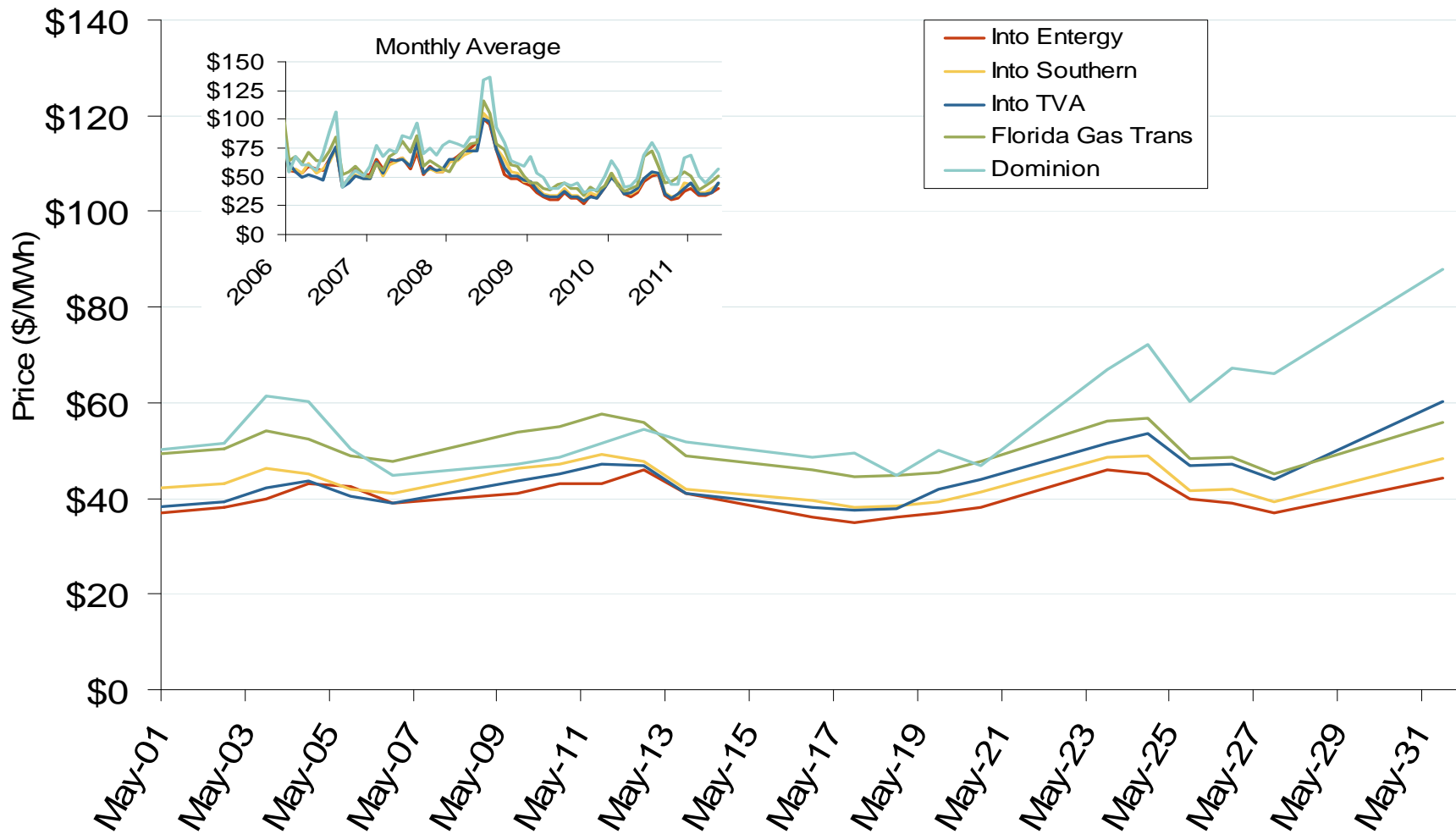
# Midwestern Daily Bilateral Day-Ahead On-Peak Prices



Source: Derived from *Platts* data.

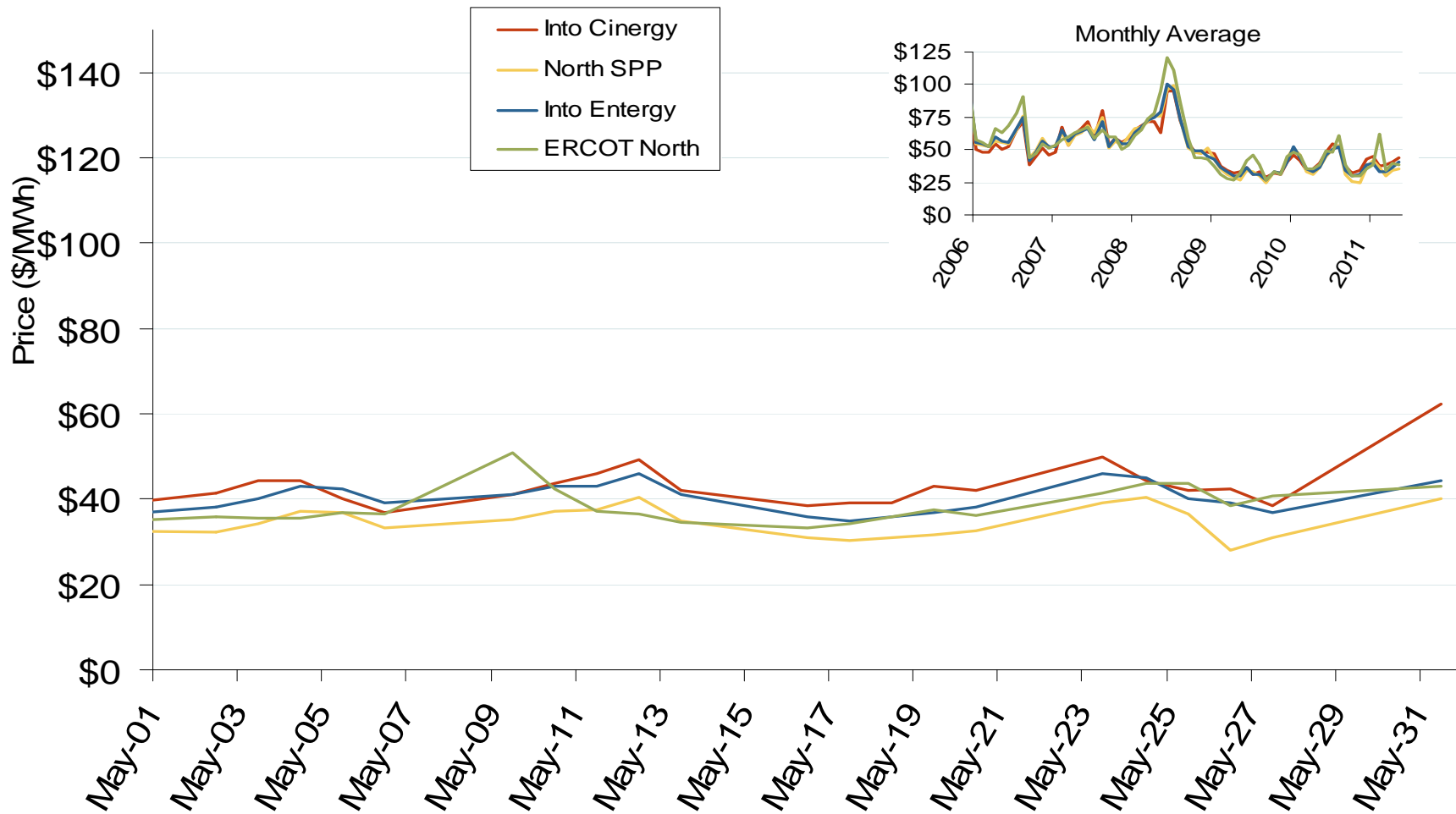
Updated June 3, 2011

# Southeastern Daily Bilateral Day-Ahead On-Peak Prices



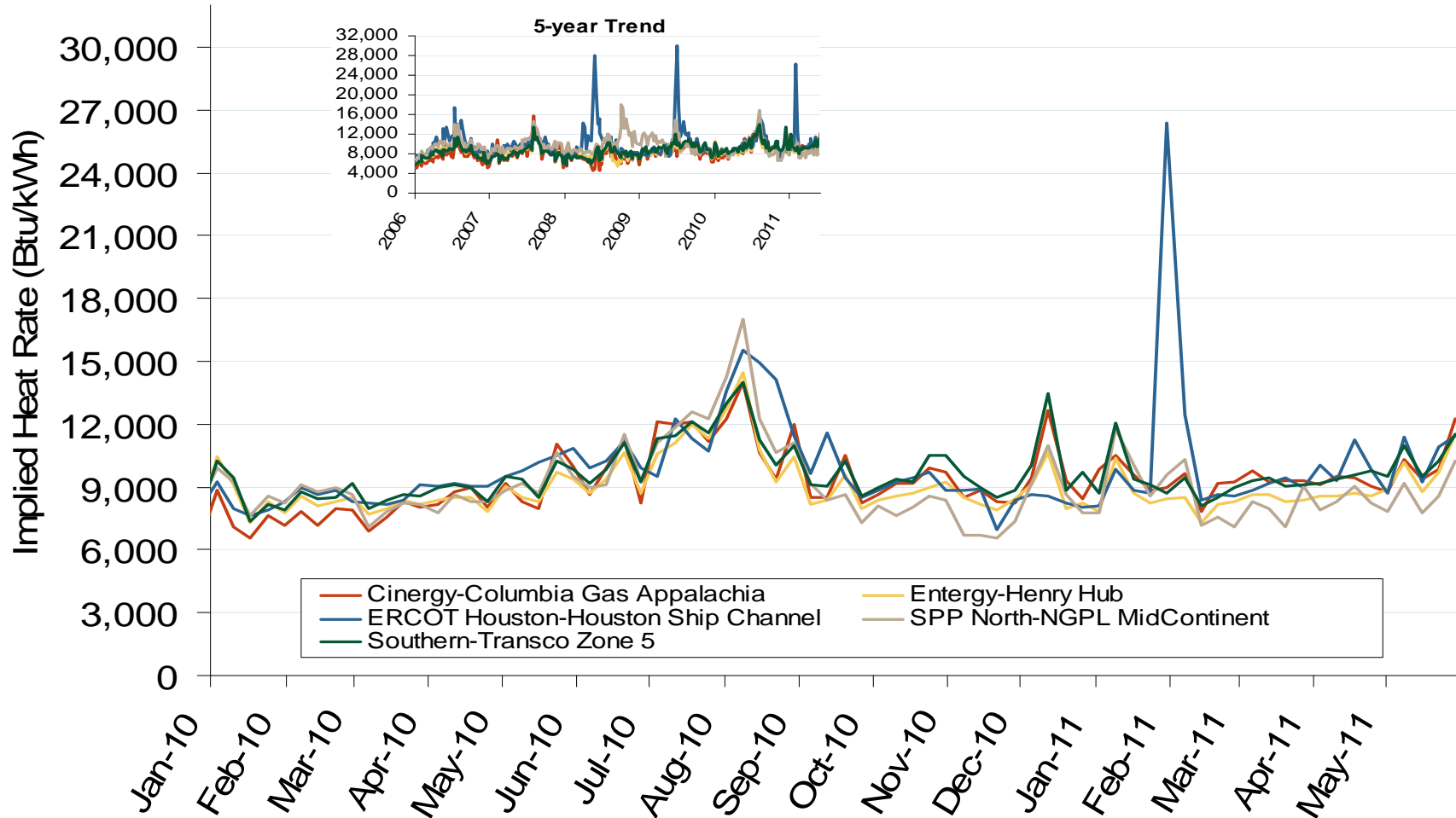
Source: Derived from Platts data.

# Midwestern Daily Bilateral Day-Ahead On-Peak Prices



Source: Derived from *Platts* data.

# Implied Heat Rates at South Central Trading Points Weekly Averages

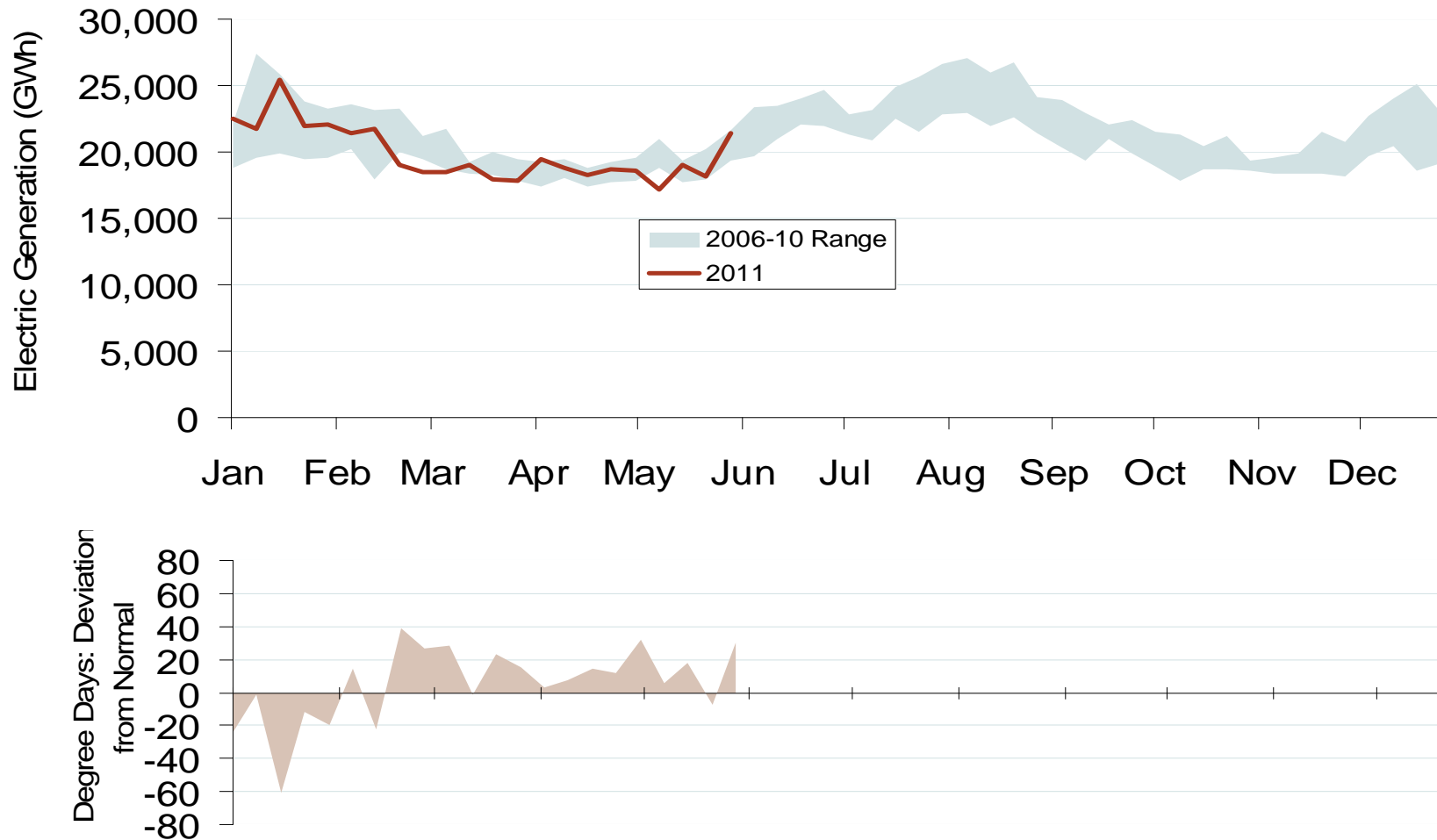


Source: Derived from *Platts* on-peak electric and natural gas price data.

Updated June 3, 2011

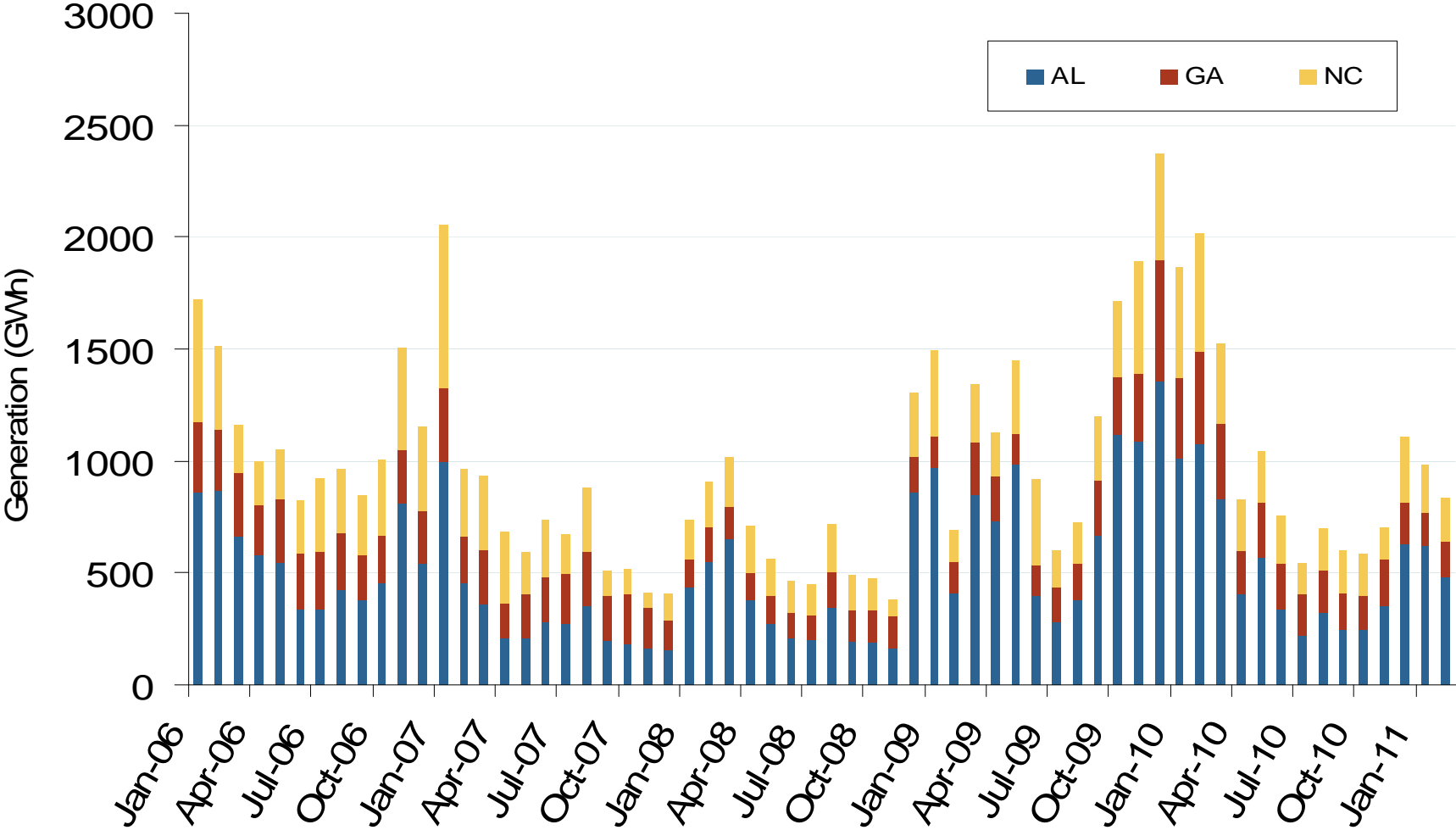


# Weekly Electric Generation Output and Temperatures Southeast Region



Source: Derived from *EEl* and *NOAA* data.

# Monthly Southeastern Hydroelectric Generation



Source: Energy Velocity, Derived from EIA and EPA data.  
June 2011

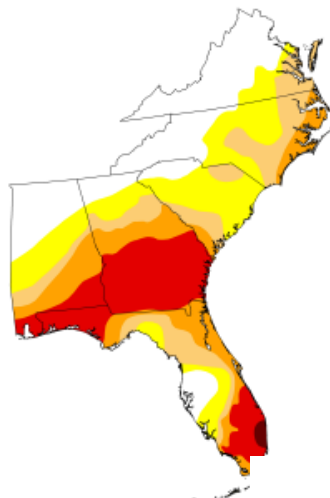
Updated June 3, 2011

# Monthly Southeastern Drought Conditions

## Southeast

Drought Conditions (Percent Area)

	None	D0-D4	D1-D4	D2-D4	D3-D4	D4
Current	27.03	72.97	50.55	34.62	19.75	0.46
Last Week (05/24/2011 map)	27.51	72.49	49.14	30.69	10.67	0.00
3 Months Ago (03/01/2011 map)	5.82	94.18	75.79	27.10	4.43	0.00
Start of Calendar Year (12/28/2010 map)	23.01	76.99	51.84	23.55	5.63	0.00
Start of Water Year (09/28/2010 map)	18.18	81.82	38.04	10.32	0.90	0.00
One Year Ago (05/25/2010 map)	94.18	5.82	0.00	0.00	0.00	0.00



Intensity:

- D0 Abnormally Dry
- D1 Drought - Moderate
- D2 Drought - Severe
- D3 Drought - Extreme
- D4 Drought - Exceptional

**May 31, 2011**

**June 1, 2010**

## Southeast

Drought Conditions (Percent Area)

	None	D0-D4	D1-D4	D2-D4	D3-D4	D4
Current	94.3	5.7	0.0	0.0	0.0	0.0
Last Week (05/25/2010 map)	94.2	5.8	0.0	0.0	0.0	0.0
3 Months Ago (03/09/2010 map)	97.5	2.5	0.0	0.0	0.0	0.0
Start of Calendar Year (01/05/2010 map)	99.5	0.5	0.0	0.0	0.0	0.0
Start of Water Year (10/06/2009 map)	82.6	17.4	5.5	1.0	0.0	0.0
One Year Ago (06/02/2009 map)	95.2	4.8	0.7	0.0	0.0	0.0



Intensity:

- D0 Abnormally Dry
- D1 Drought - Moderate
- D2 Drought - Severe
- D3 Drought - Extreme
- D4 Drought - Exceptional

Updated: June 6, 2011