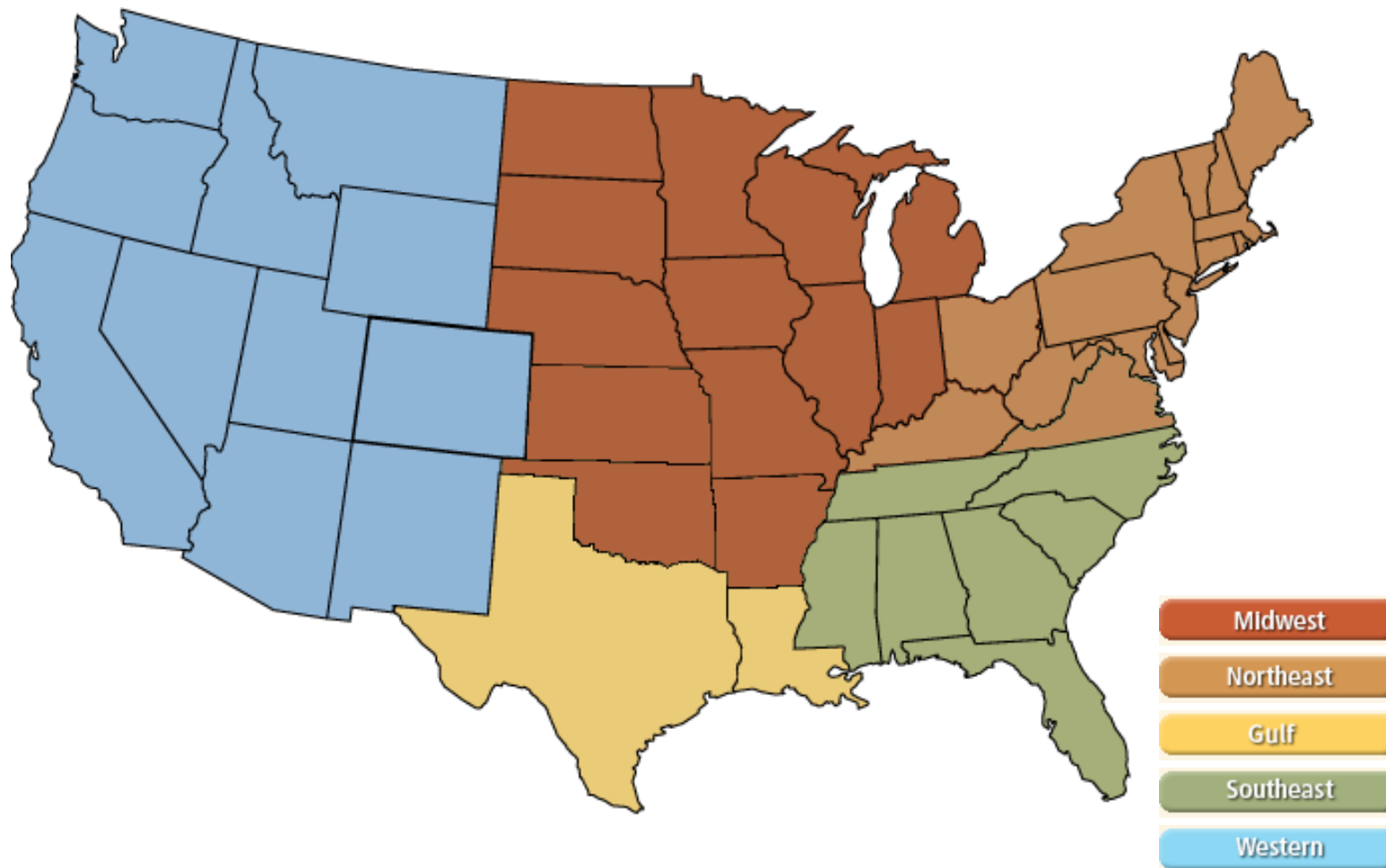
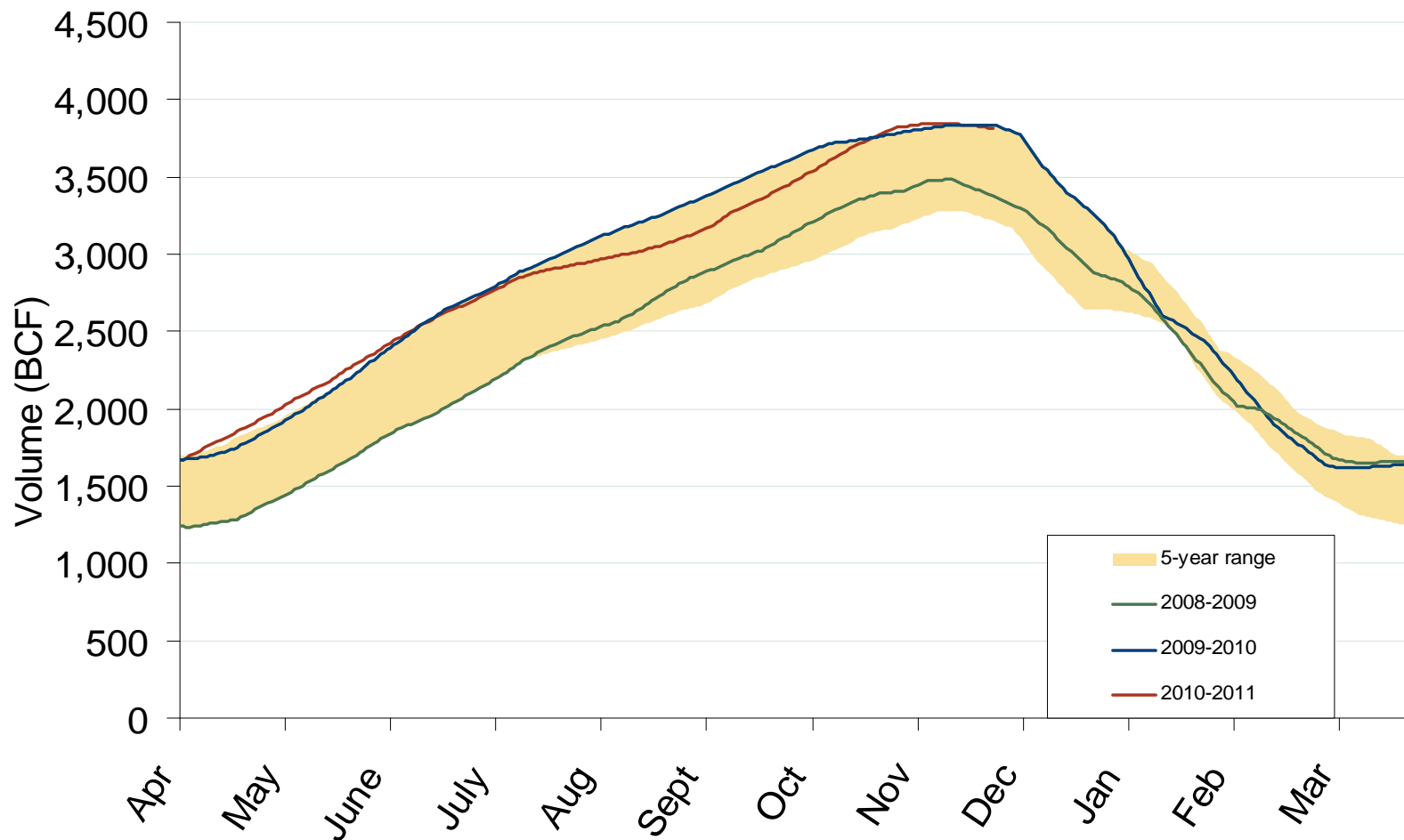


## Natural Gas Market National Overview

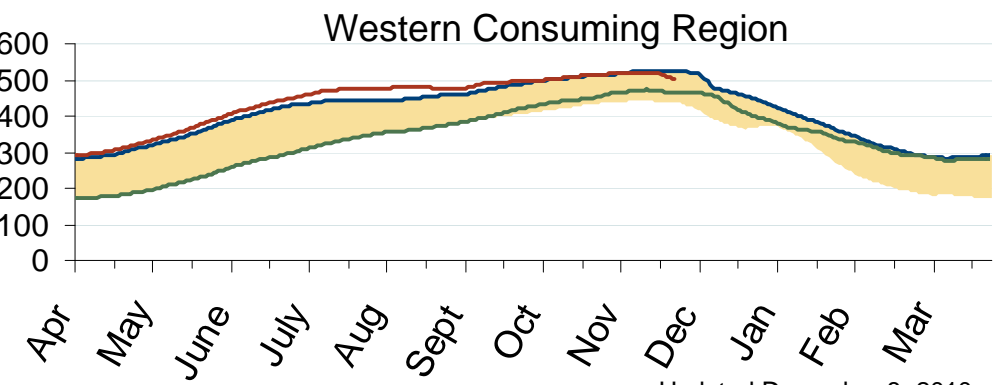
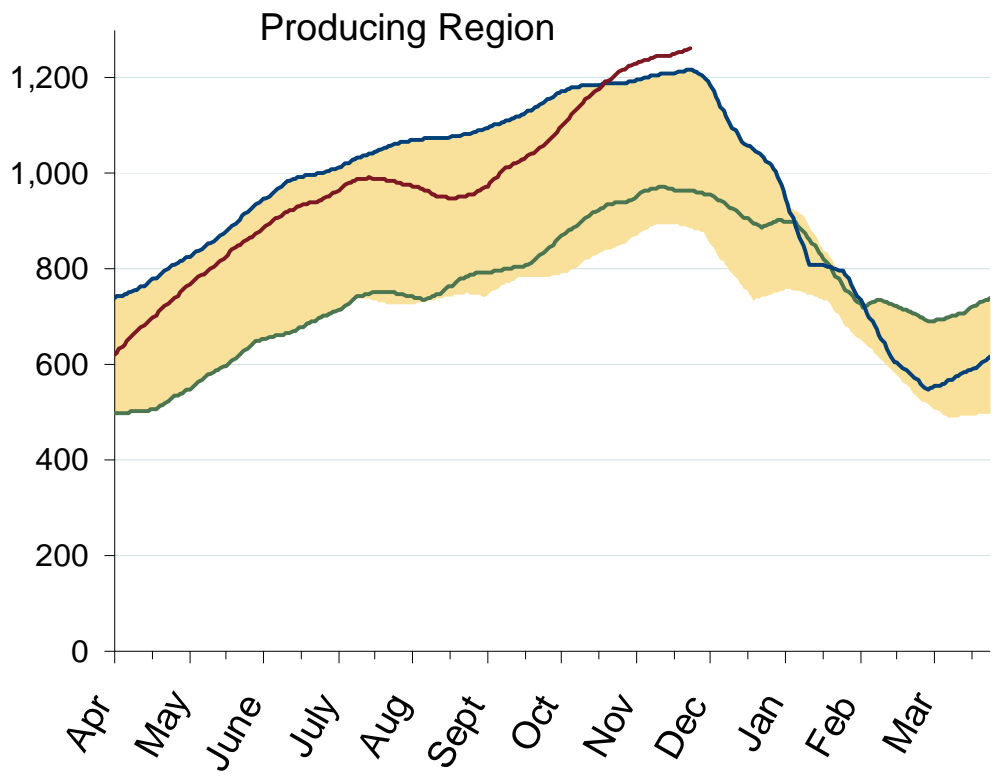
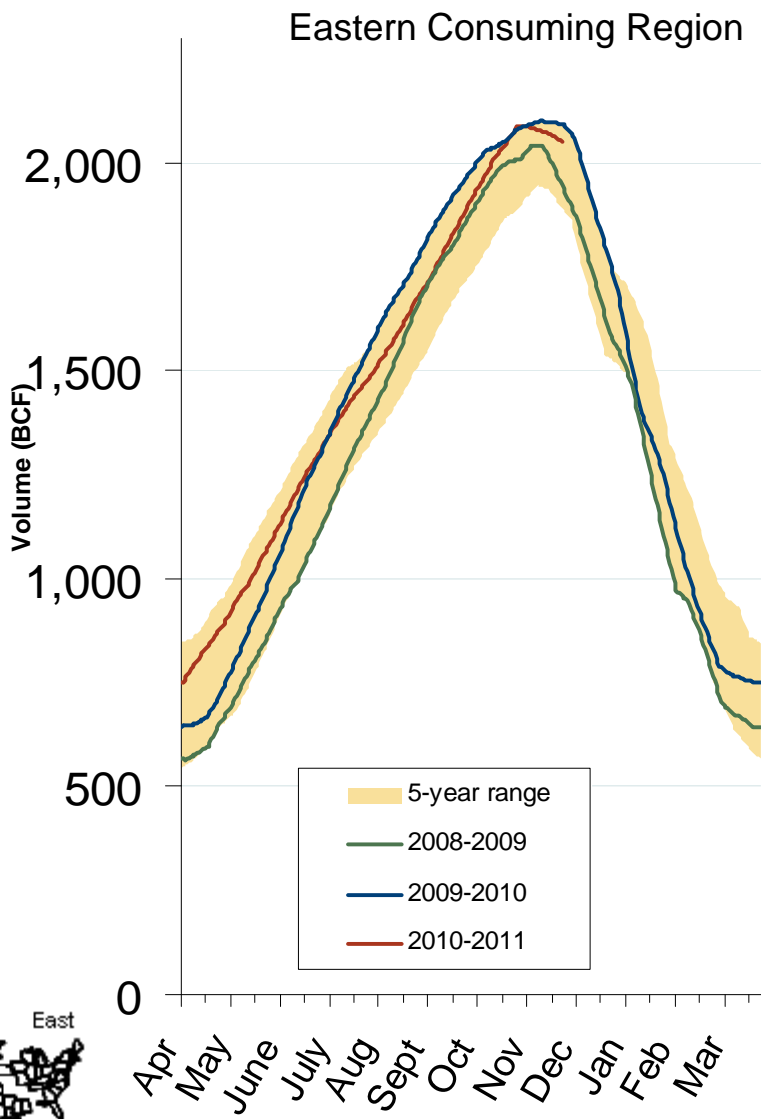


## Total U.S. Working Gas in Storage



Source: Derived from EIA data.  
December 2010

## Regional Totals of Working Gas in Storage

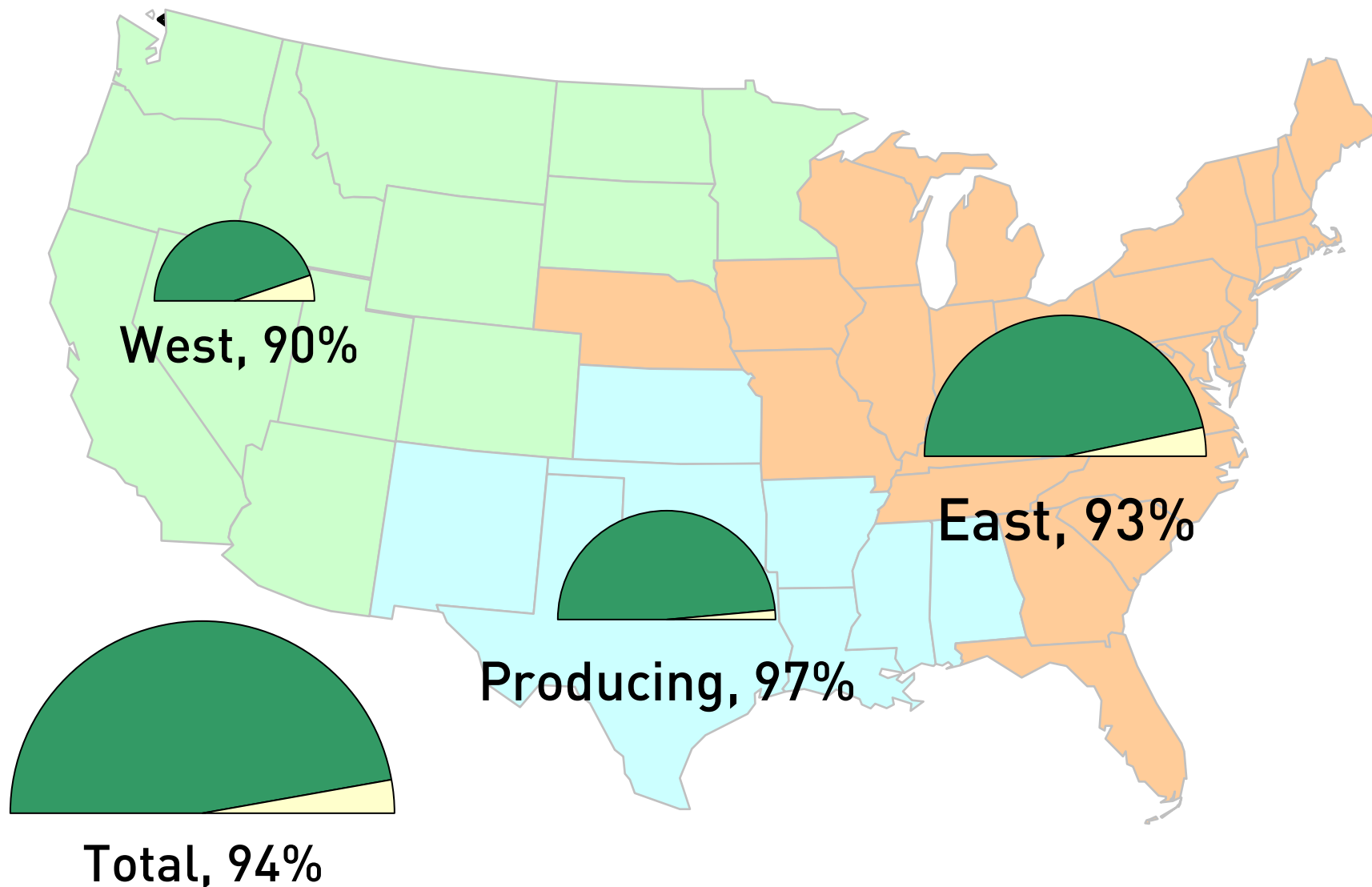


Source: Derived from EIA data.

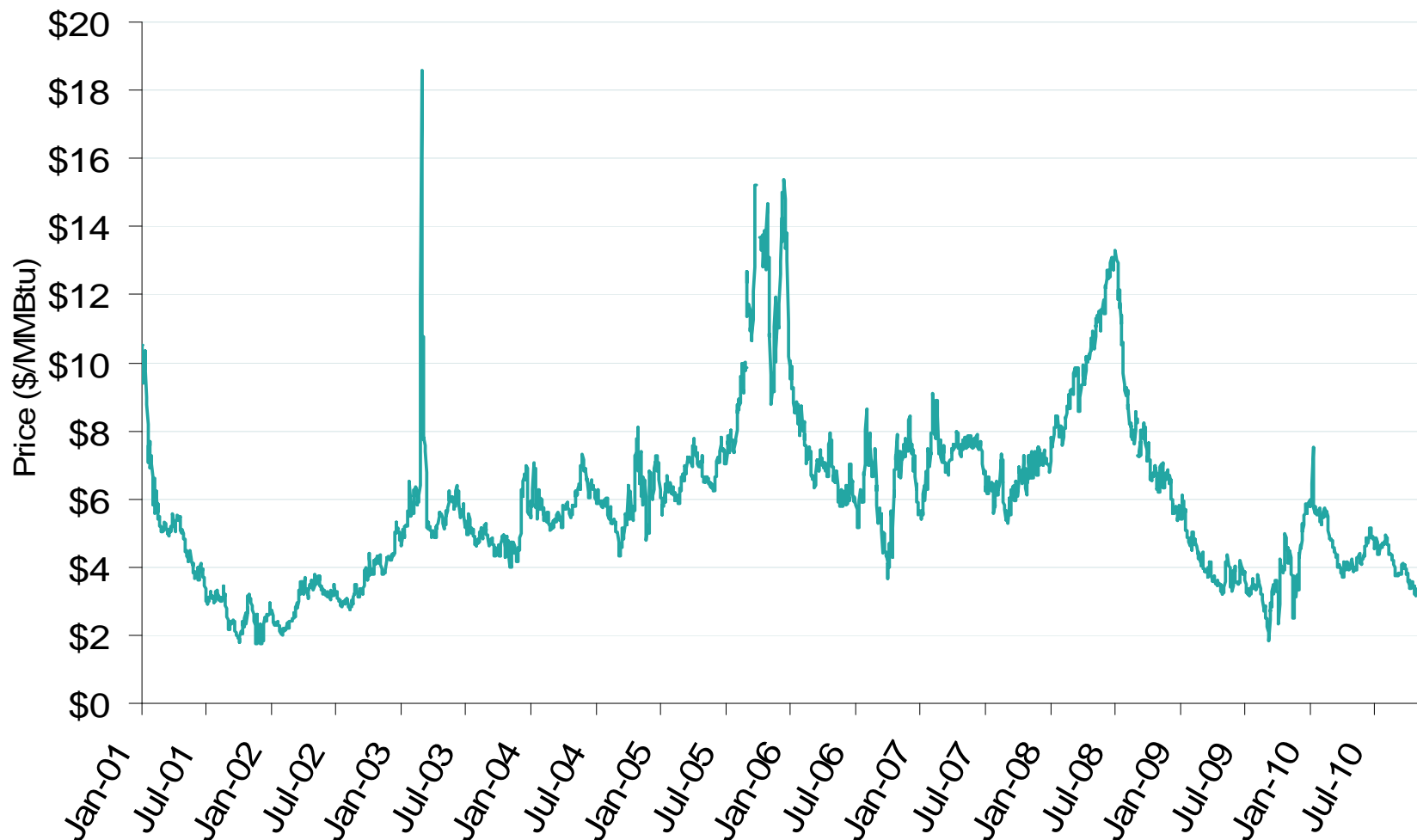
December 2010

Updated December 8, 2010

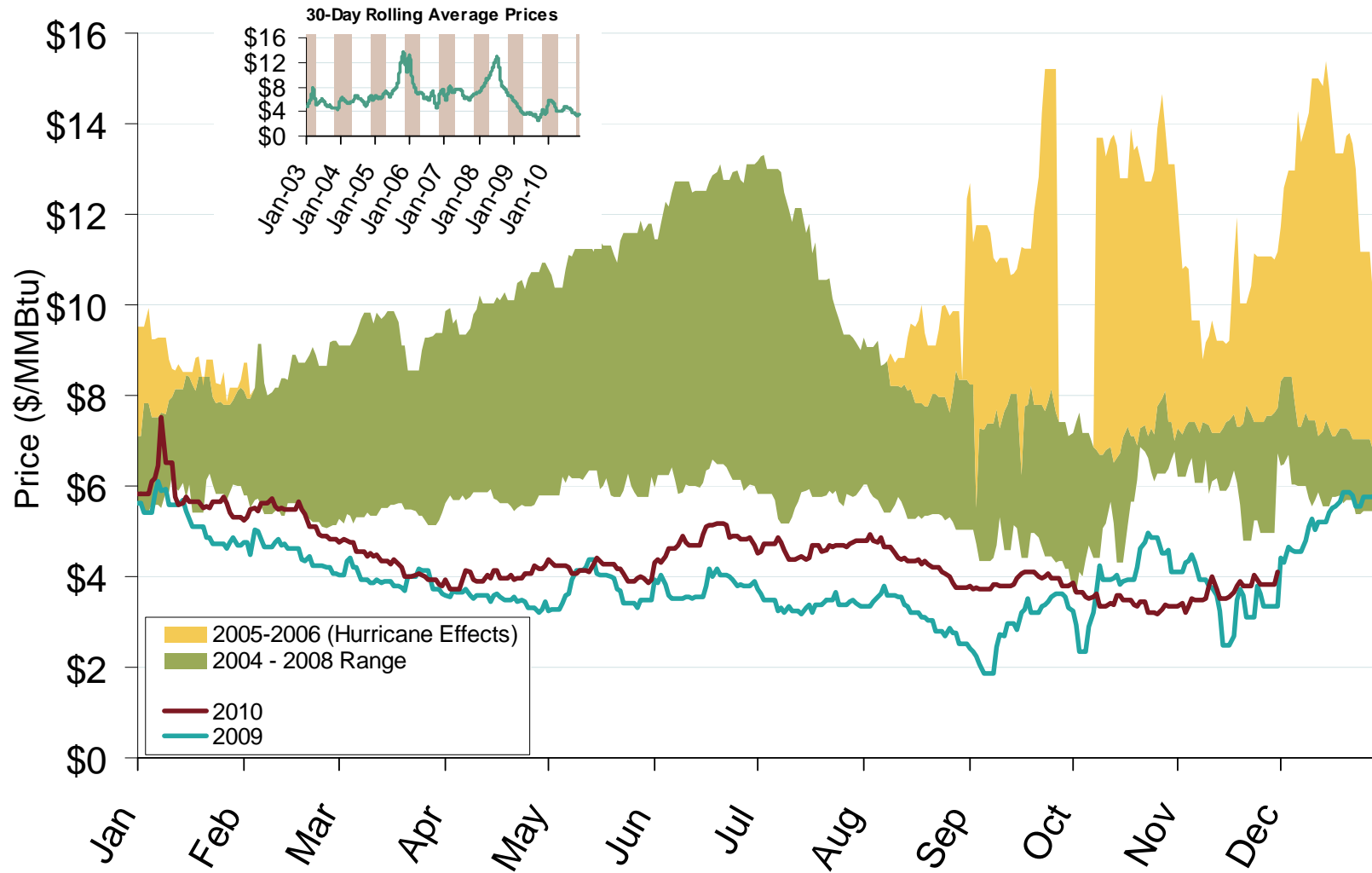
## Natural Gas Storage Inventories – % full as of November 26, 2010



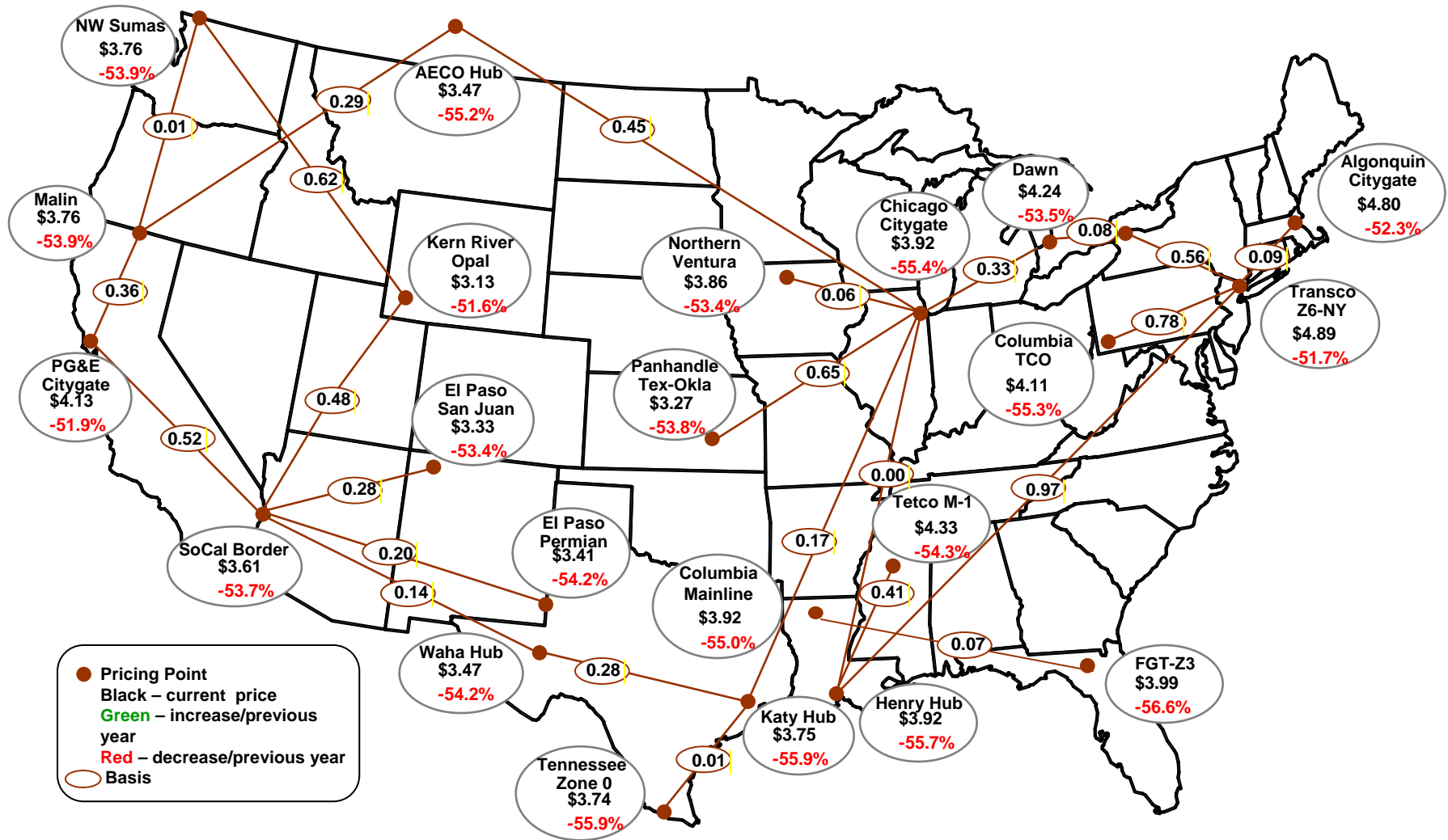
## Henry Hub Natural Gas Daily Spot Prices 2001-2010



## Henry Hub Natural Gas Daily Spot Prices



## Average Spot Gas Prices, 2009 (\$MMBtu)



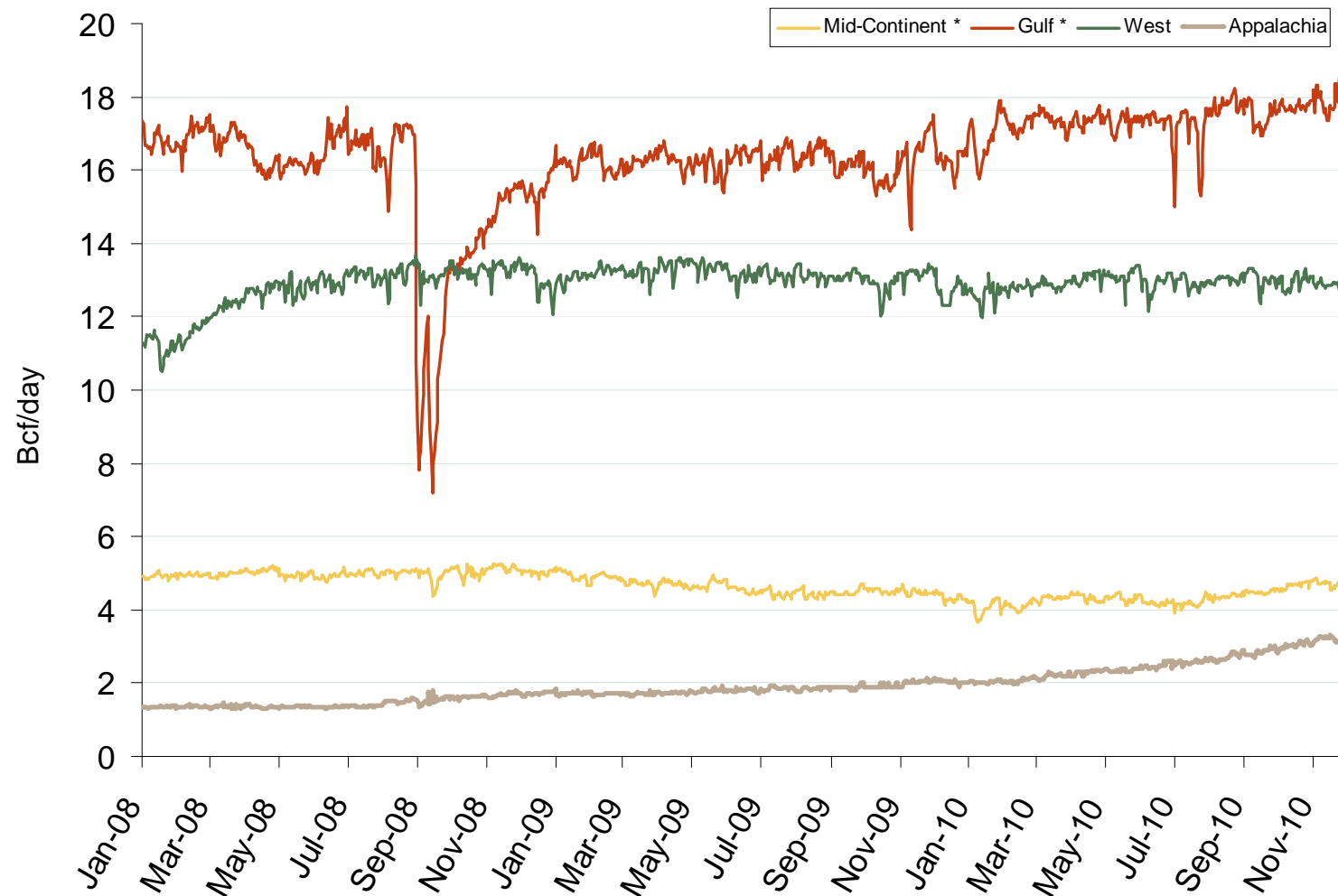
Source: Derived from *Platts* data.  
December 2010

Updated July 9, 2010

## Natural Gas Market Overview: Production By Region

Federal Energy Regulatory Commission • Market Oversight • [www.ferc.gov/oversight](http://www.ferc.gov/oversight)

## Regional Natural Gas Production

Source: Derived from *Bentek* data.

\* On July 1, 2009 Bentek redefined its regions, moving some of the southern Midcontinent production to the Southeast, which is included in Gulf series.

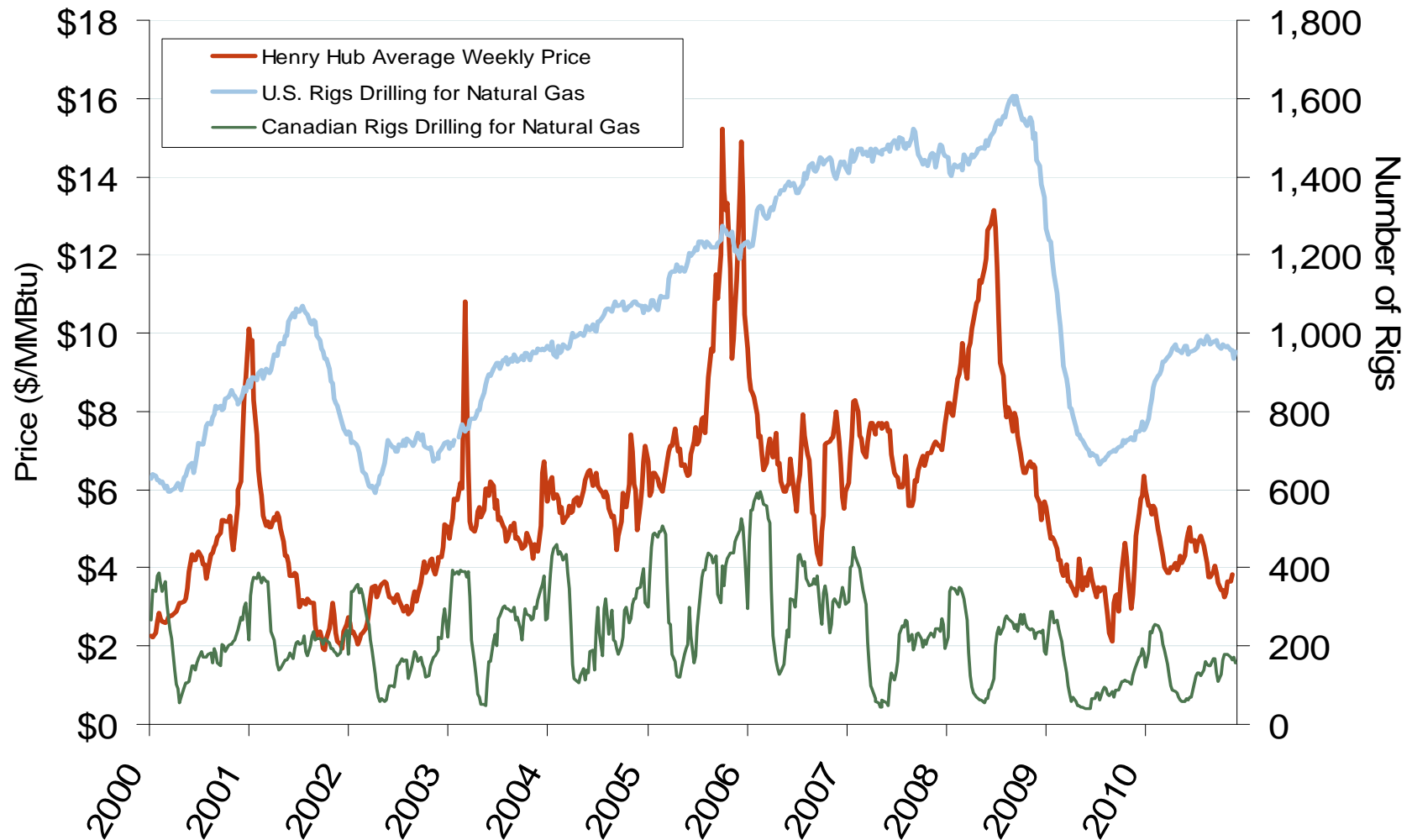
December 2010

Updated December 8, 2010

2182



## U.S. and Canadian Natural Gas Drilling Rig Count and Daily Spot Prices



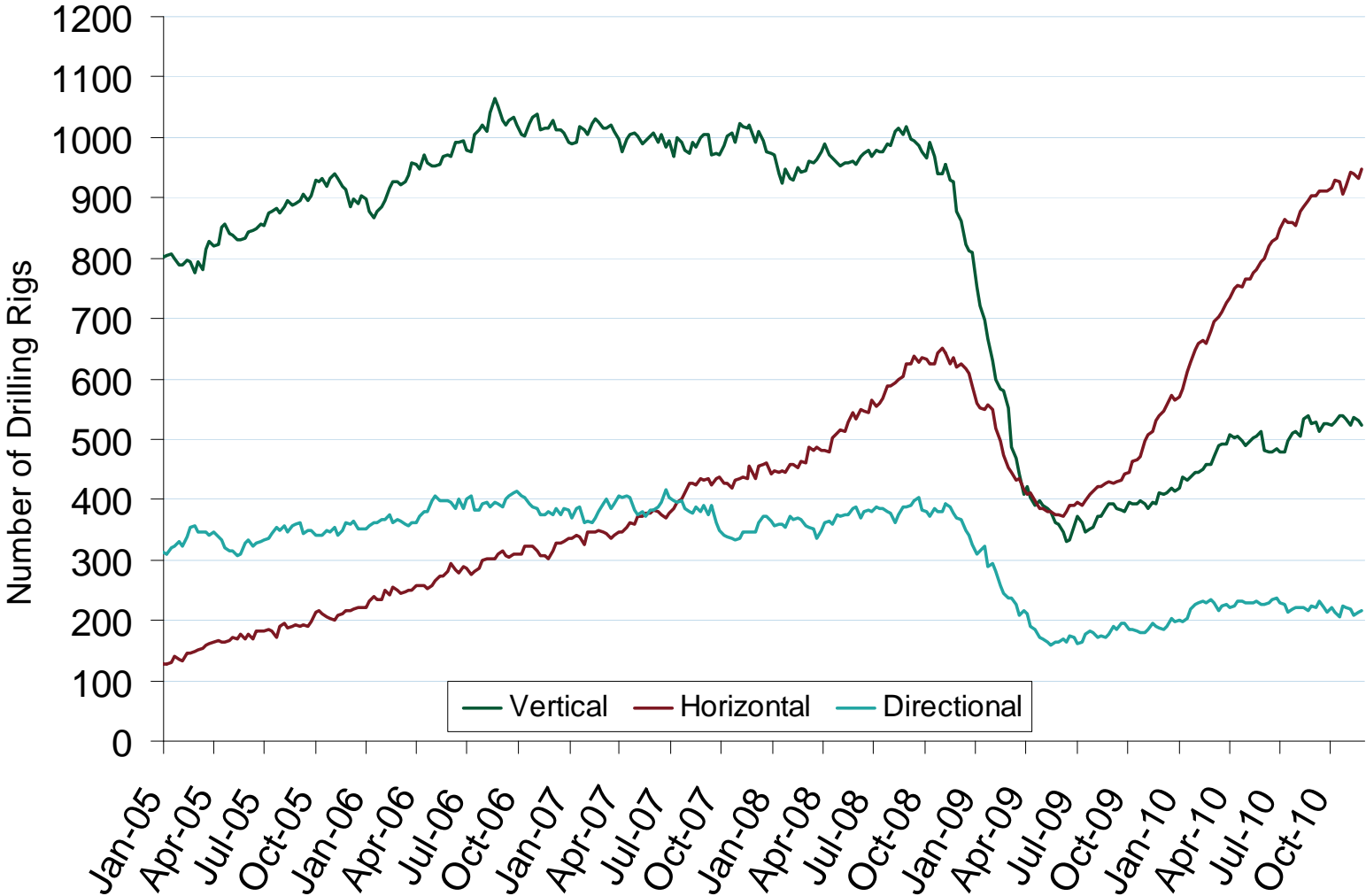
Source: Derived from *Platts* and *Baker Hughes* data.

December 2010

Updated December 8, 2010

2007

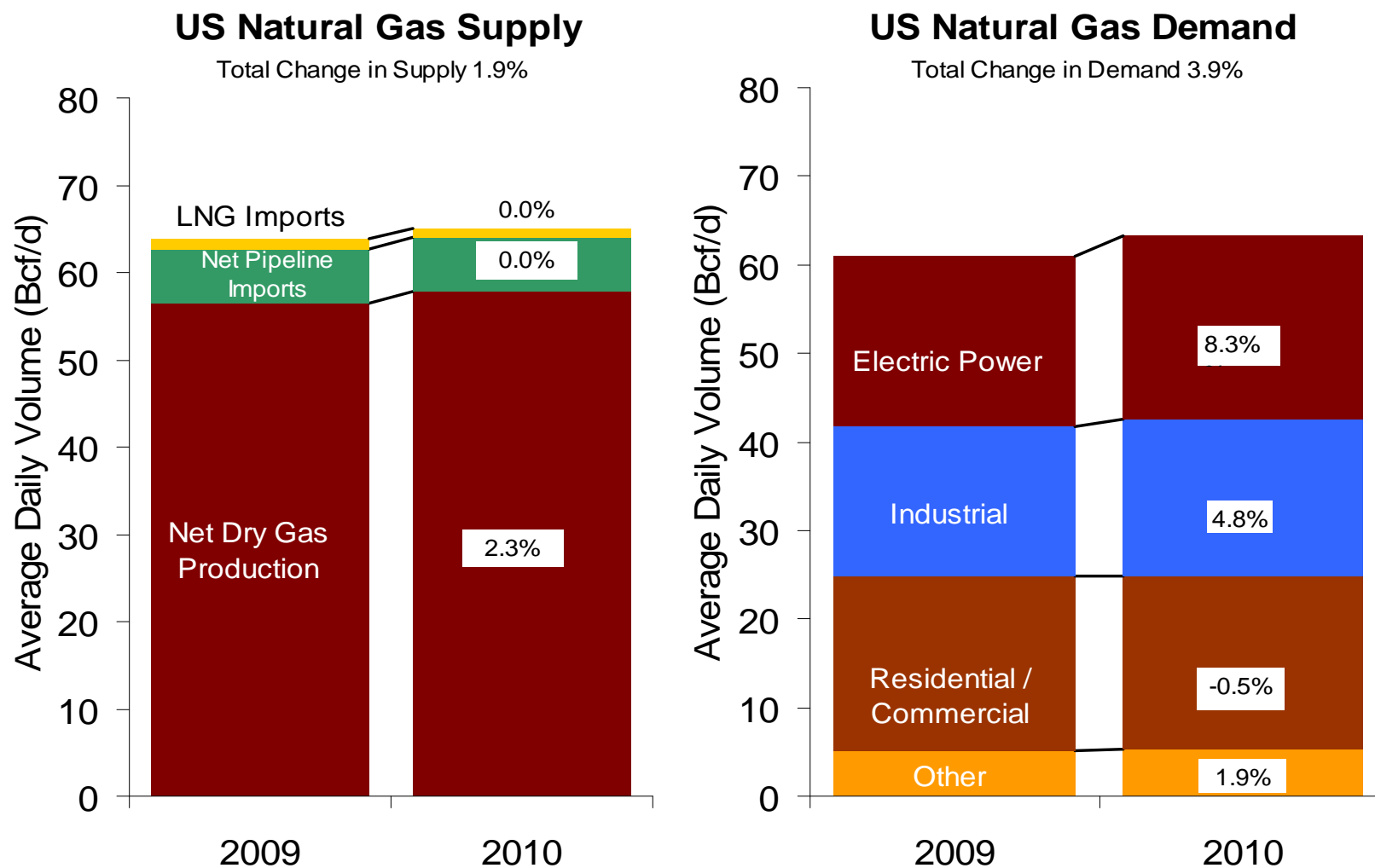
# U.S. Oil and Natural Gas Drilling Rig Count by Type



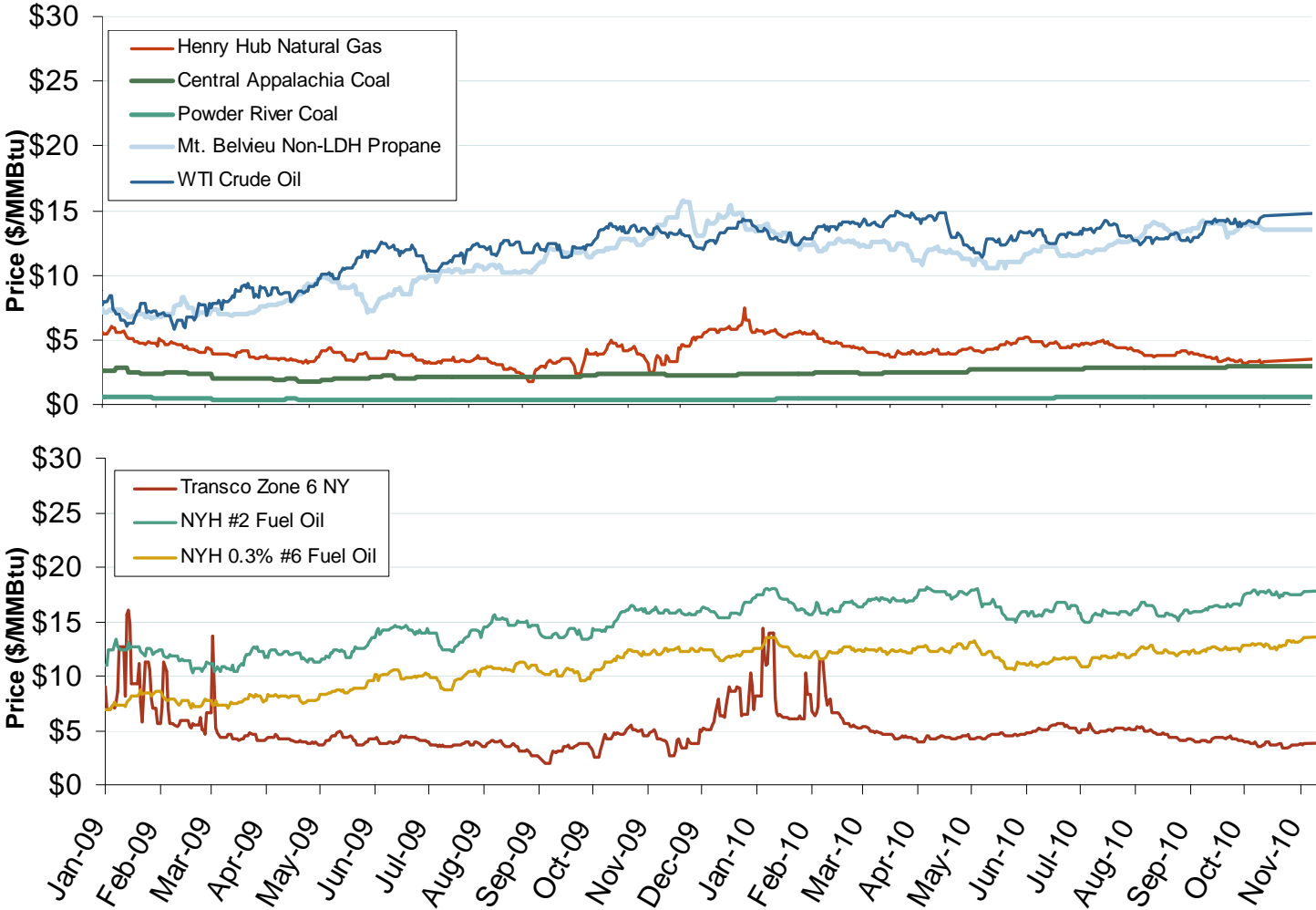
Source: Derived from *Platts* and *Baker Hughes* data.  
December 2010

Updated December 8, 2010

## U.S. Natural Gas Supply and Demand 2009 vs. 2010: January - October



# Oil, Coal and Natural Gas Daily Spot Prices

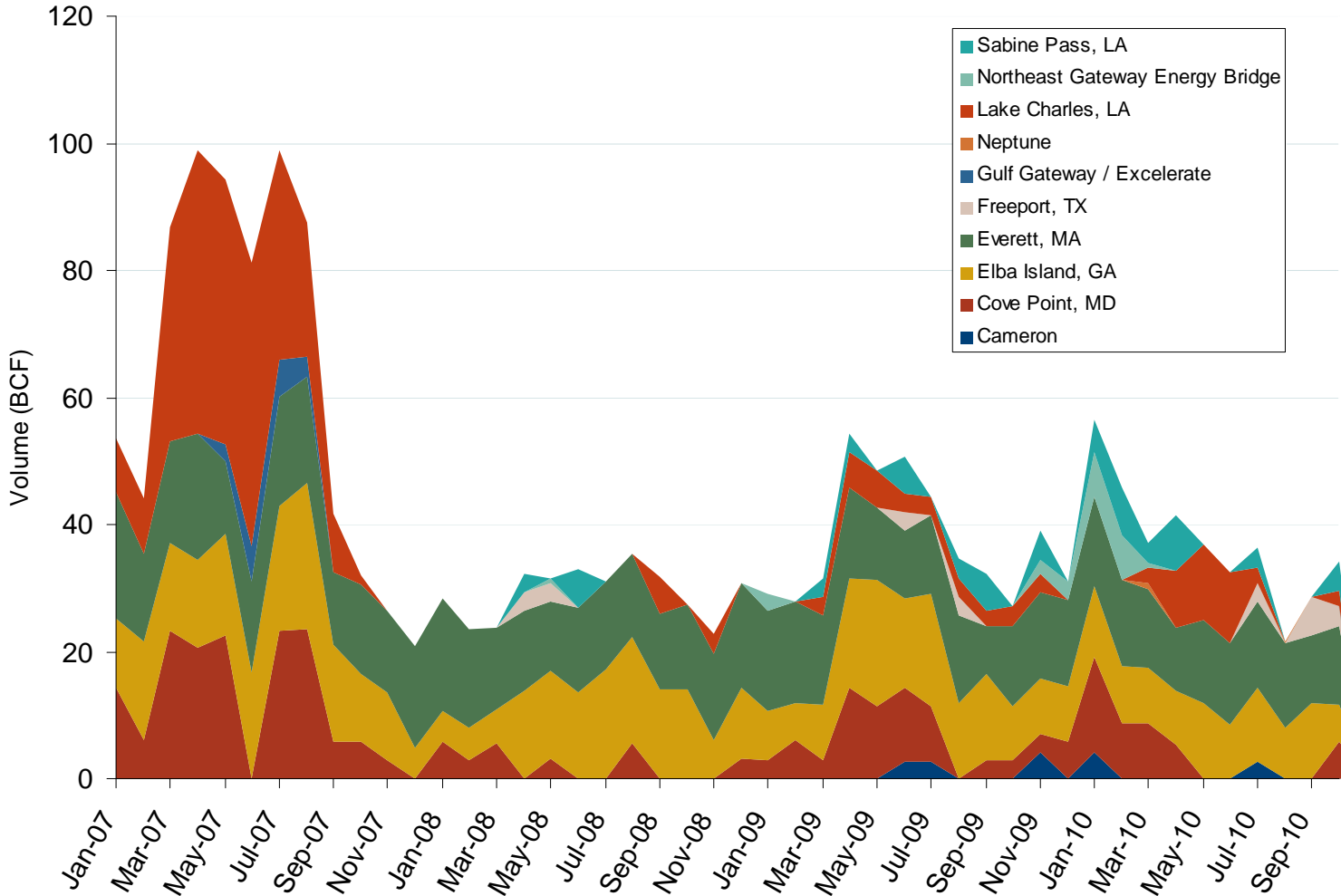


Source: Derived from ICE and Bloomberg data.

Note: Coal prices are quoted in \$/ton. Conversion factors to \$/MMBtu are based on contract specifications of 12,000 btus/pound for Central Appalachian coal and 8800 btus/pound for Powder River Basin coal.

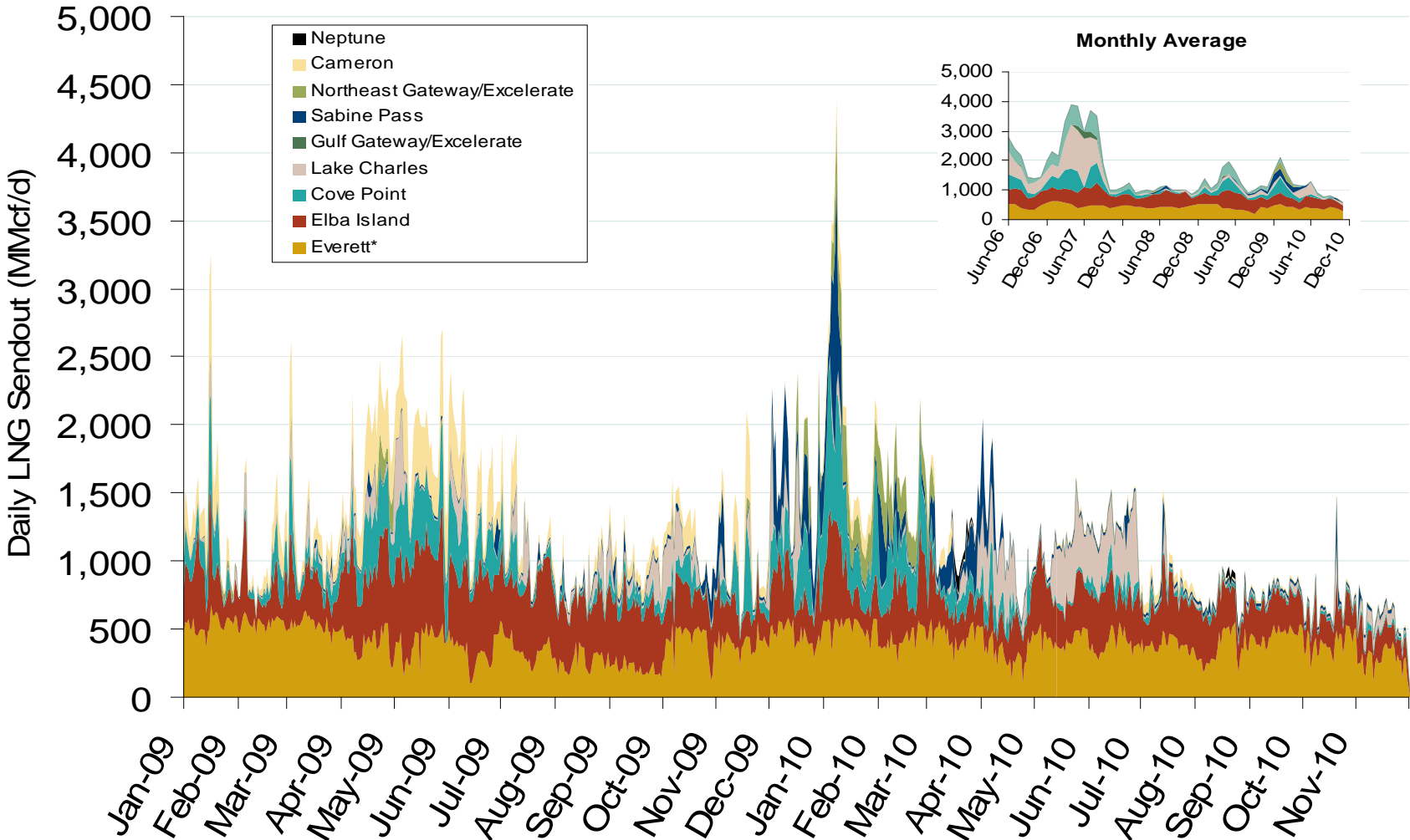
Updated December 8, 2010

# Monthly Gas Imports at Existing U.S. LNG Facilities



Source: Derived from DOE Office of Fossil Energy data.  
December 2010

# Daily Gas Sendout from Existing LNG Facilities



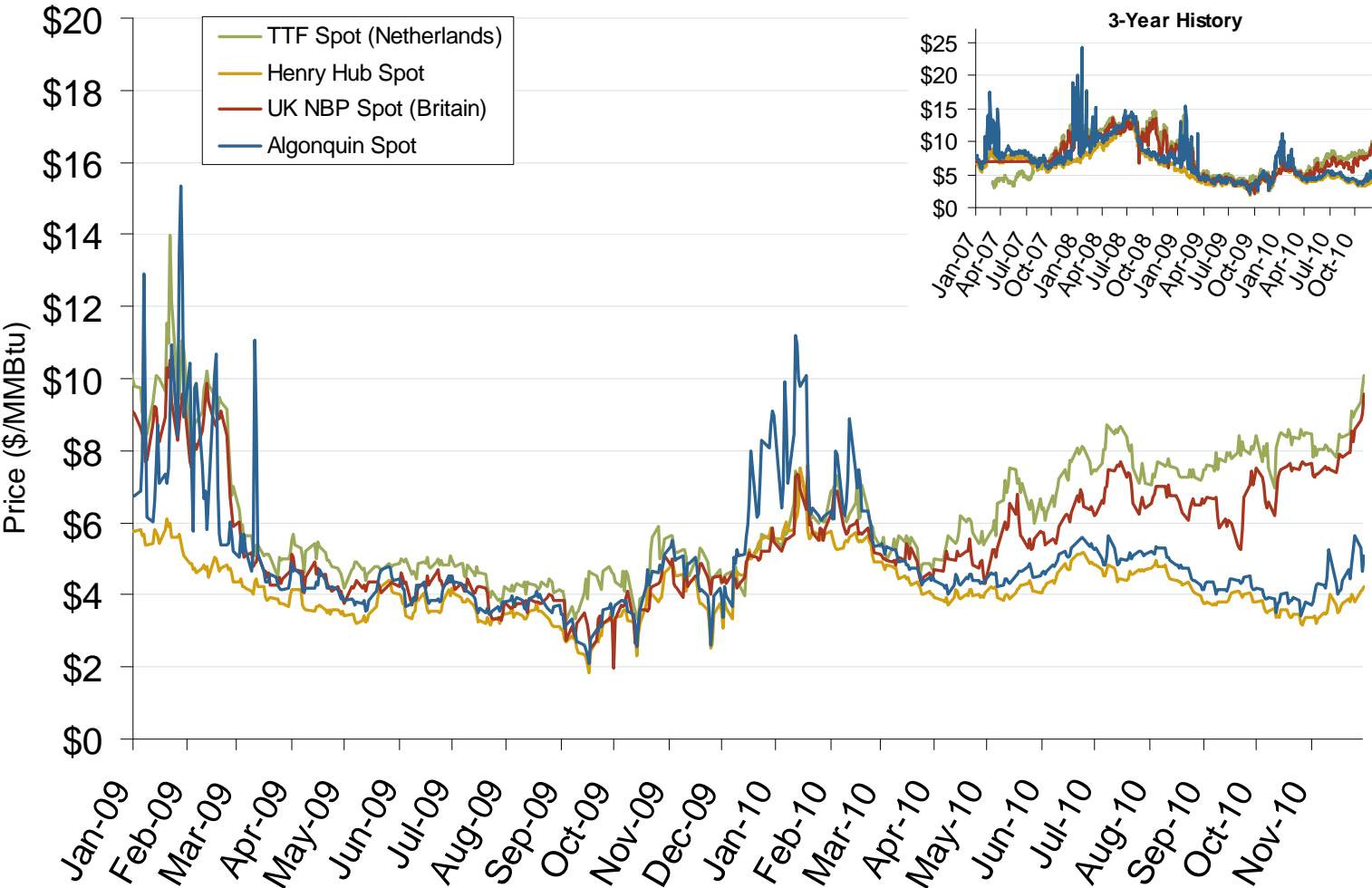
Source: Derived from Bentek data.

\* Everett data includes flows onto the AGT and TGP interstate lines, plus estimates of flows to the Mystic 7 power plant, Keyspan Boston Gas, and LNG trucked out of the terminal. Excludes Freeport LNG which flows via intrastate pipelines.  
December 2010

## World LNG Estimated December 2010 Landed Prices



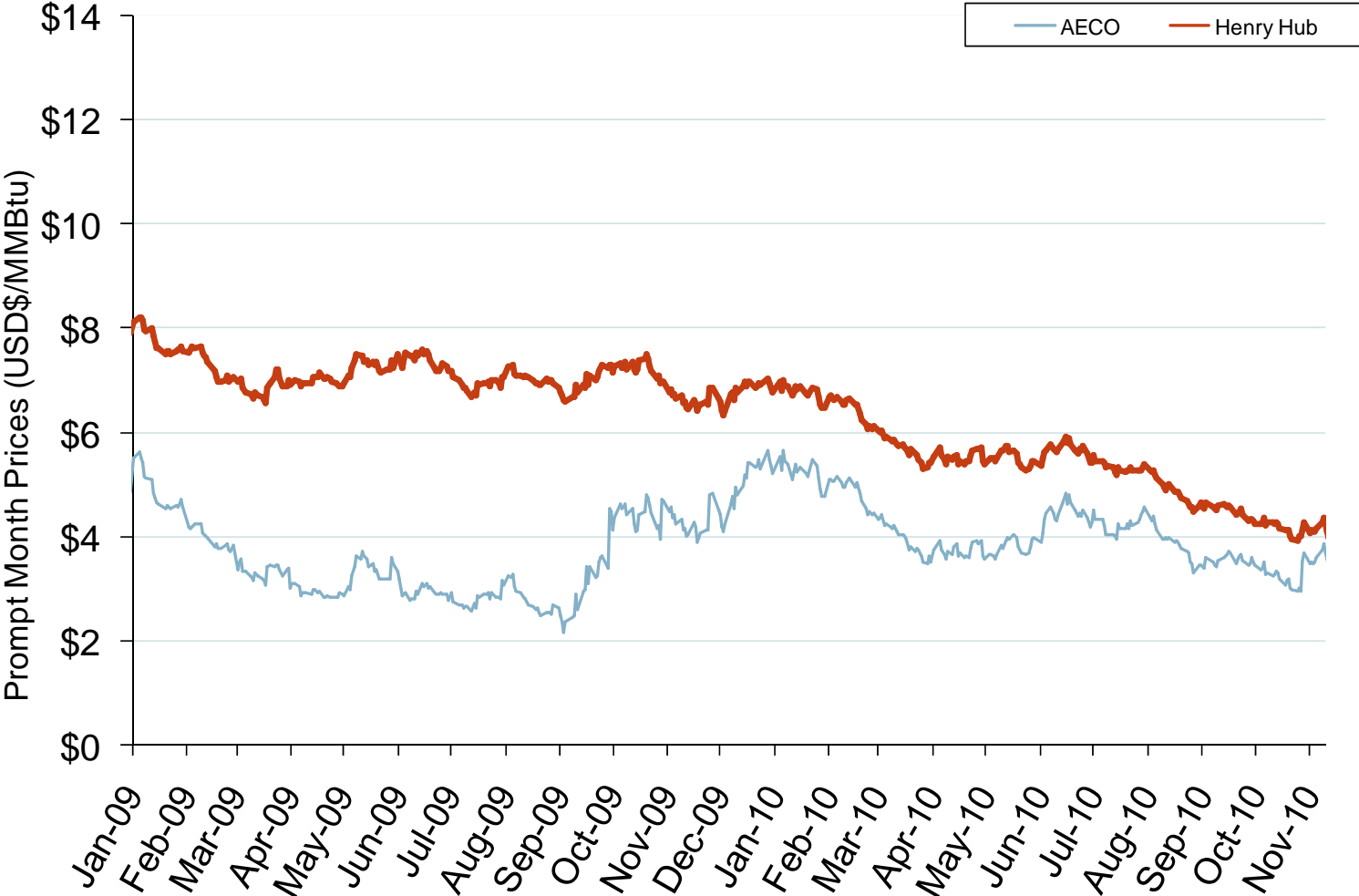
# Atlantic Basin European and US Spot Natural Gas Prices



Source: Derived from *Bloomberg* and *ICE* data.  
December 2010

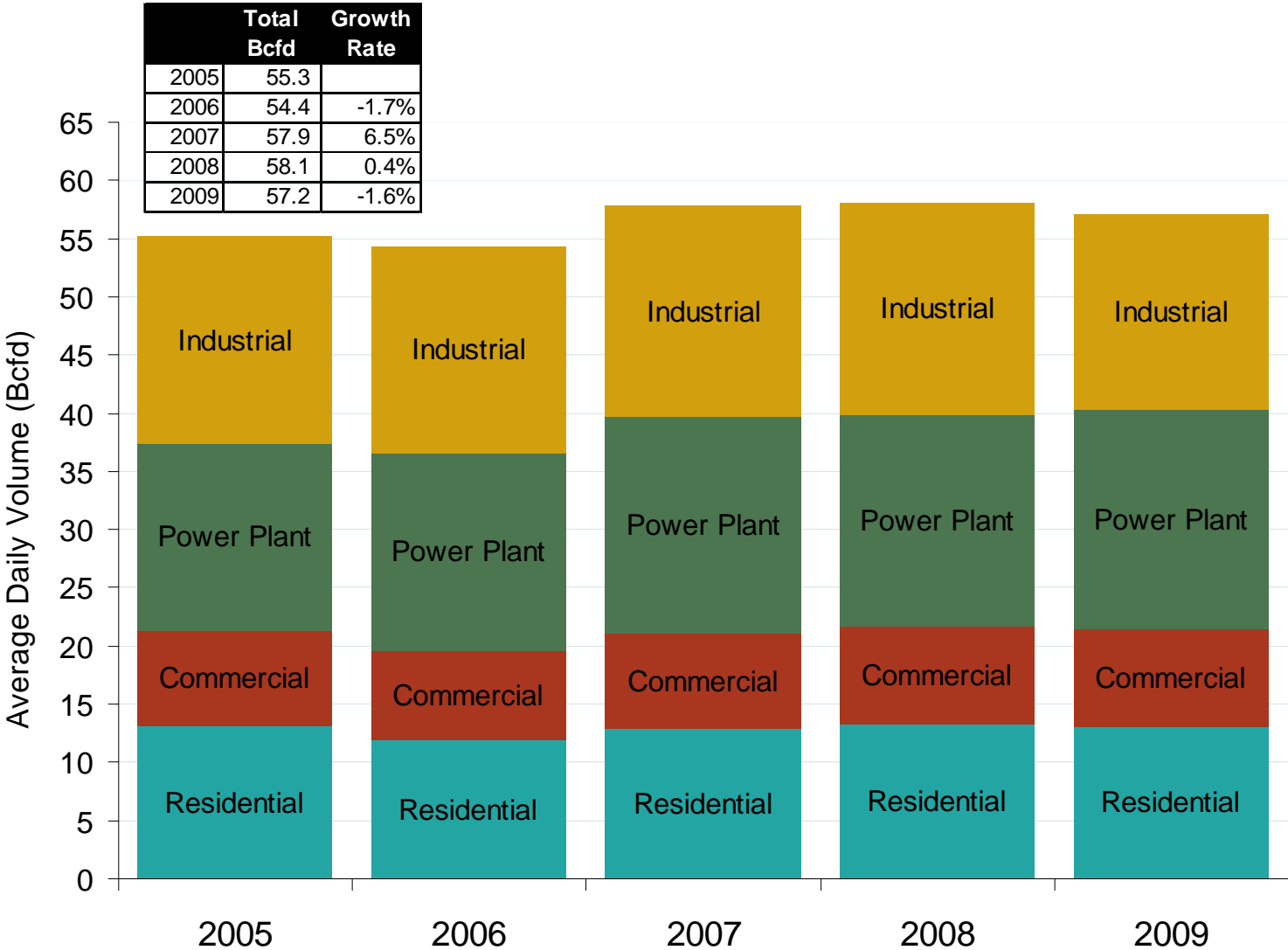


# Henry Hub and AECO Prompt-Month Futures Prices



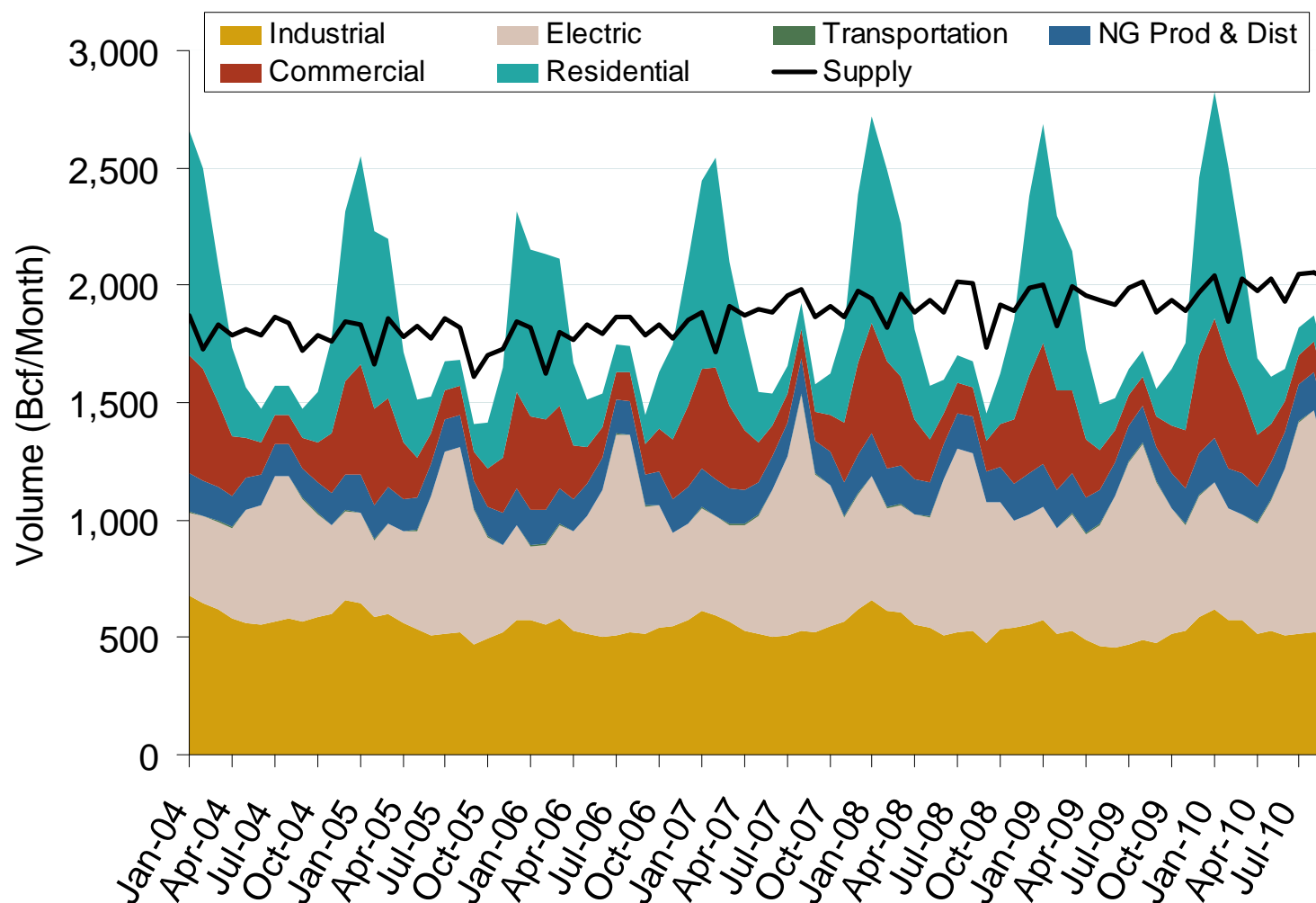
Source: Derived from ICE data.  
December 2010

# U.S. Natural Gas Consumption – Lower 48 States



Source: Derived from EIA data  
December 2010

## Annual U.S. Natural Gas Consumption by Sector



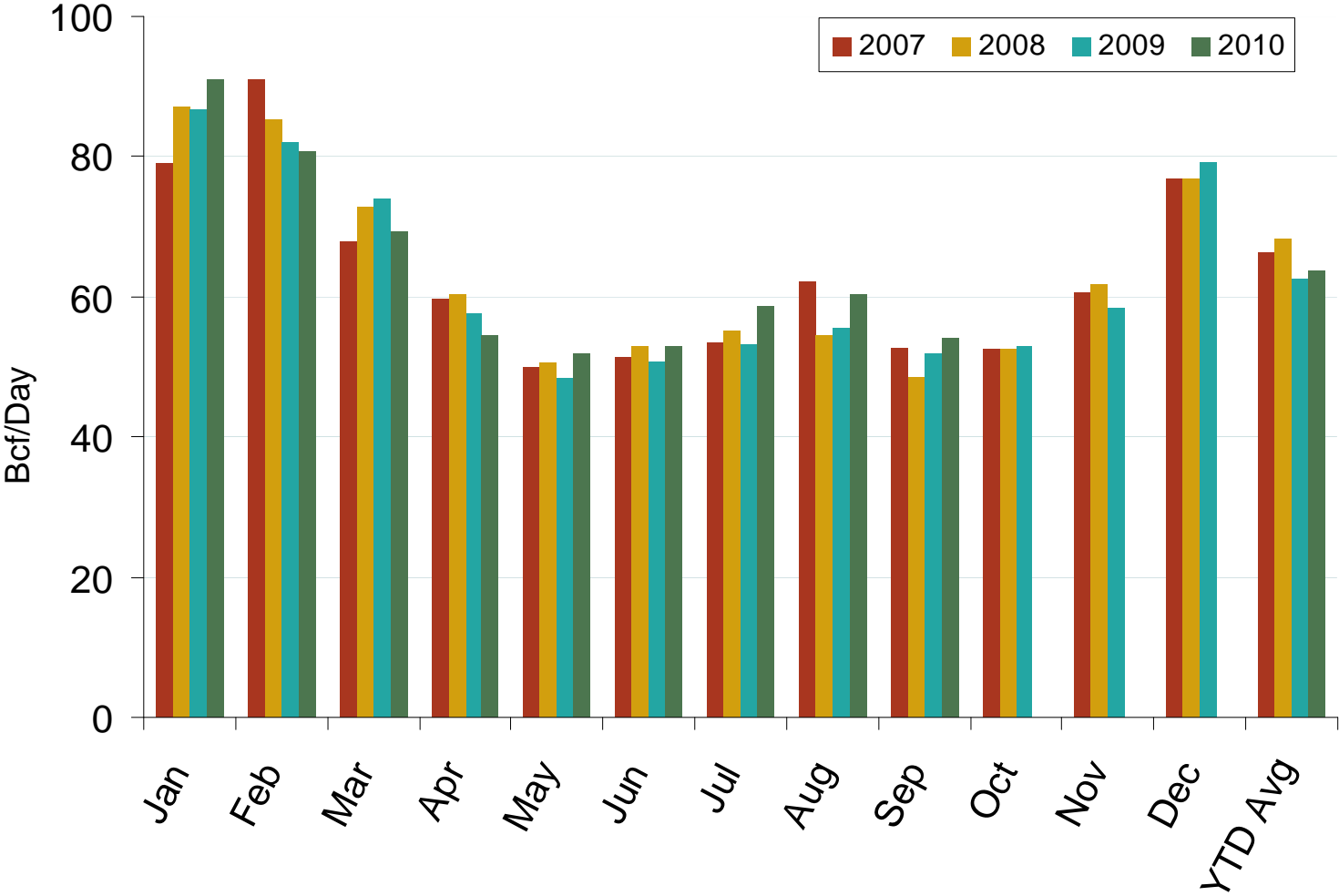
Note: Supply includes lower 48 state production, net pipeline imports, and LNG imports.

Source: Derived from EIA data  
December 2010

Updated December 8, 2010

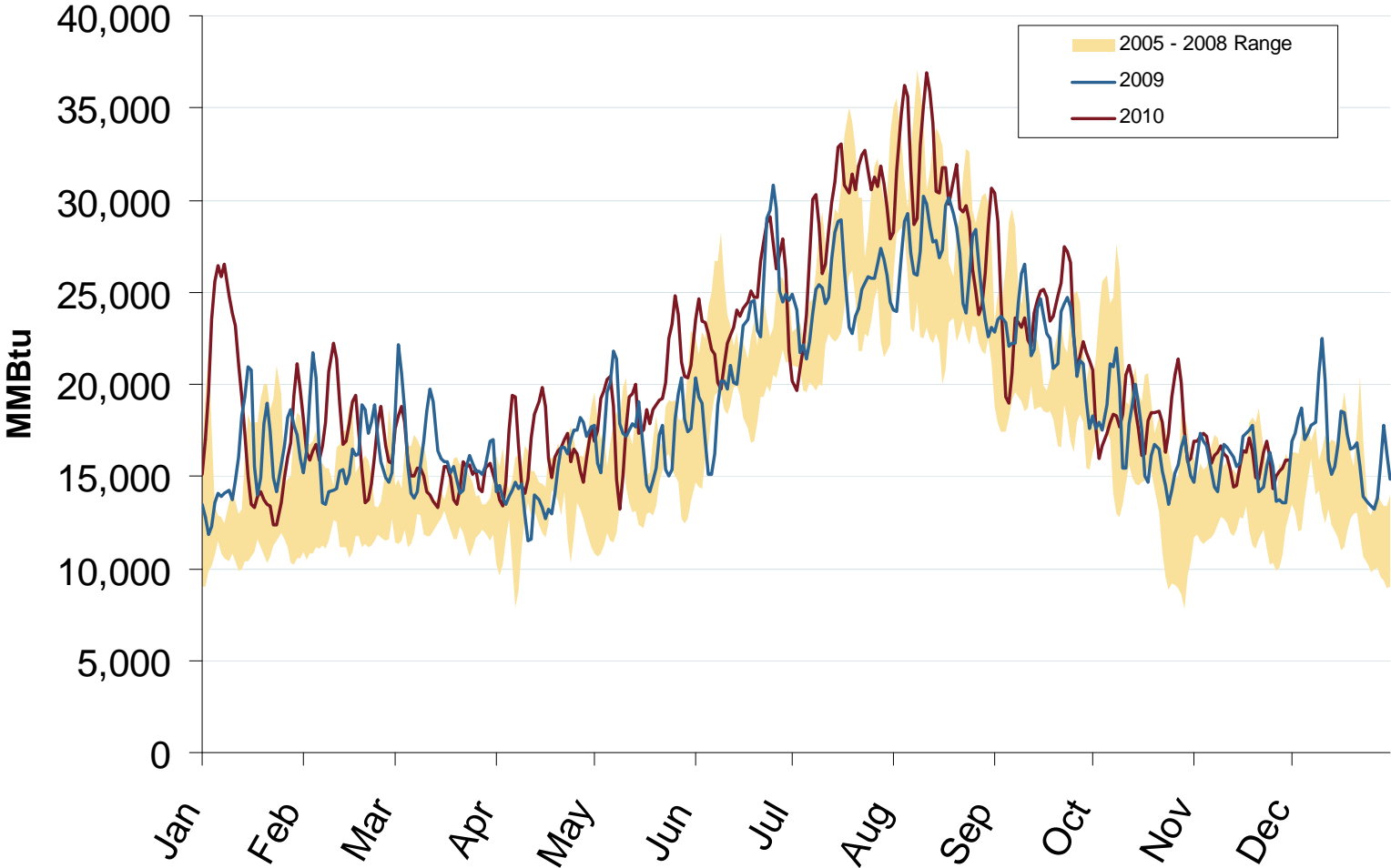
20013

# Year-to-date U.S. Natural Gas Consumption



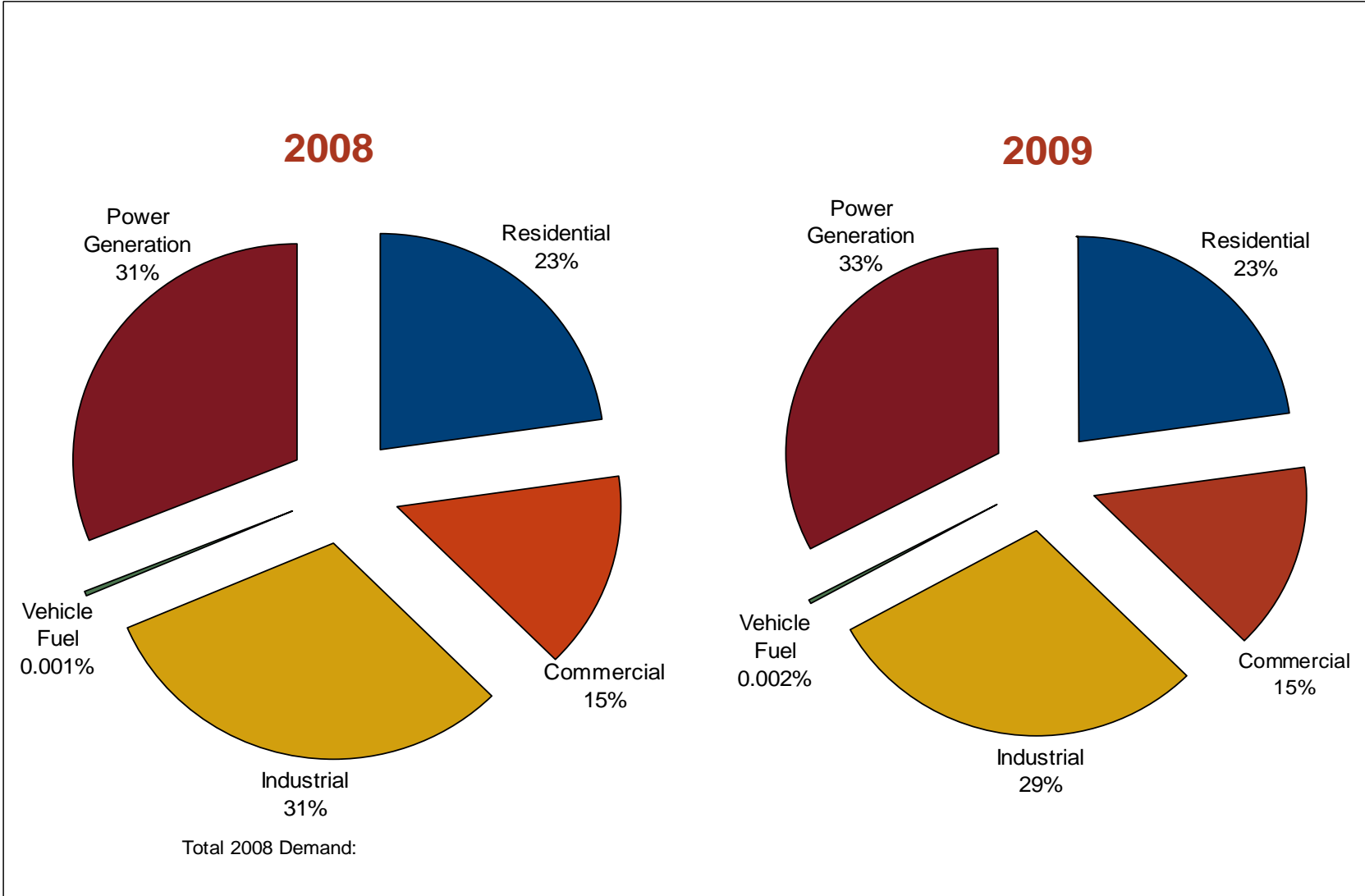
Source: Derived from EIA data.  
December 2010

# U.S. Natural Gas Consumption for Power Generation



Source: Derived from Bentek Data  
December 2010

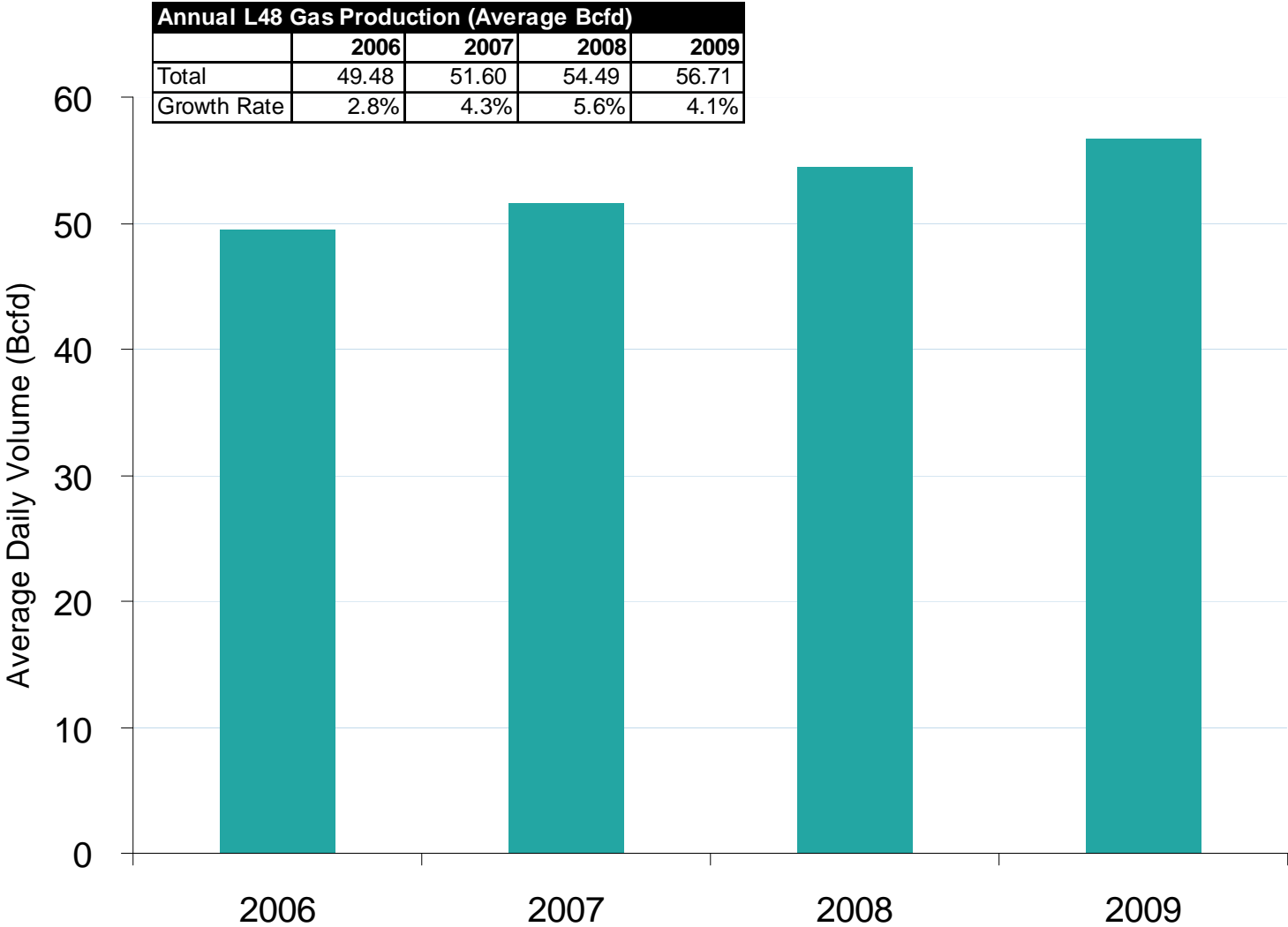
# U.S. Annual Natural Gas Demand by Sector



Source: Derived from EIA data.  
December 2010

Updated March 5, 2010

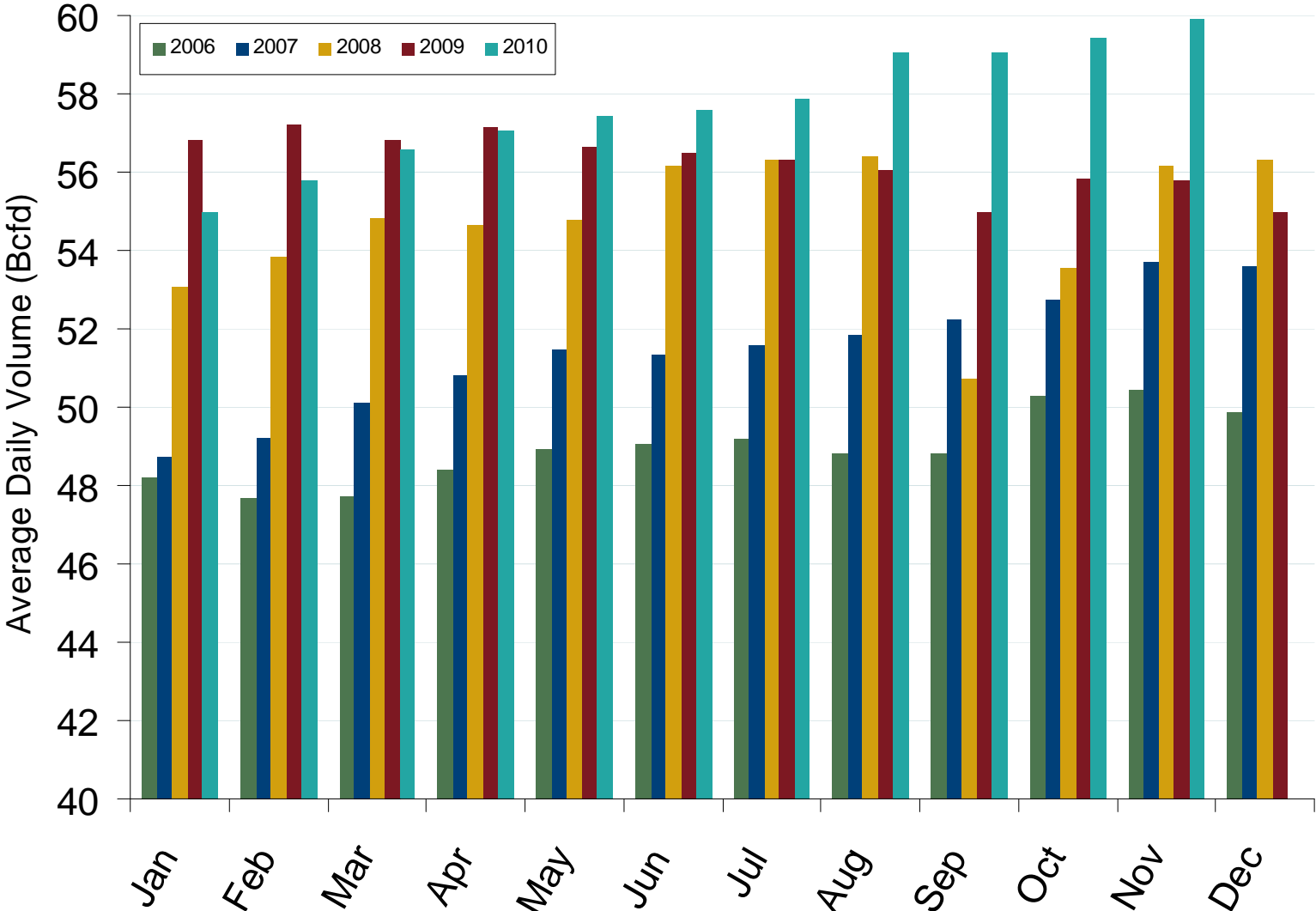
# U.S. Dry Gas Production – Lower 48 States



Source: Derived from EIA data.  
December 2010

Updated March 5, 2010

# Monthly U.S. Dry Gas Production – Lower 48 States

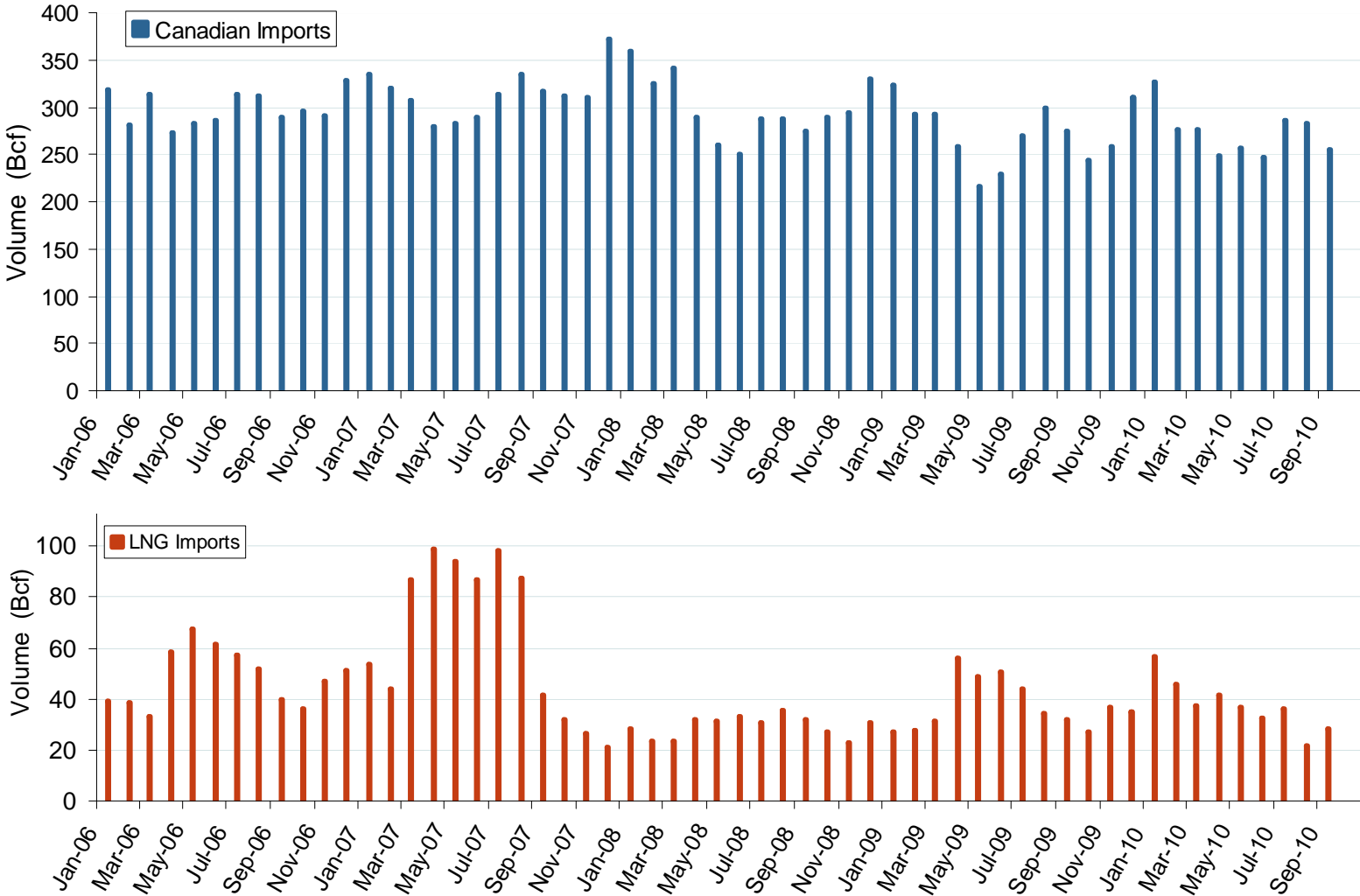


Source: Derived from Bentek data.

Note: Prior to July 2010, chart was derived from a combination of EIA and Bentek data  
December 2010



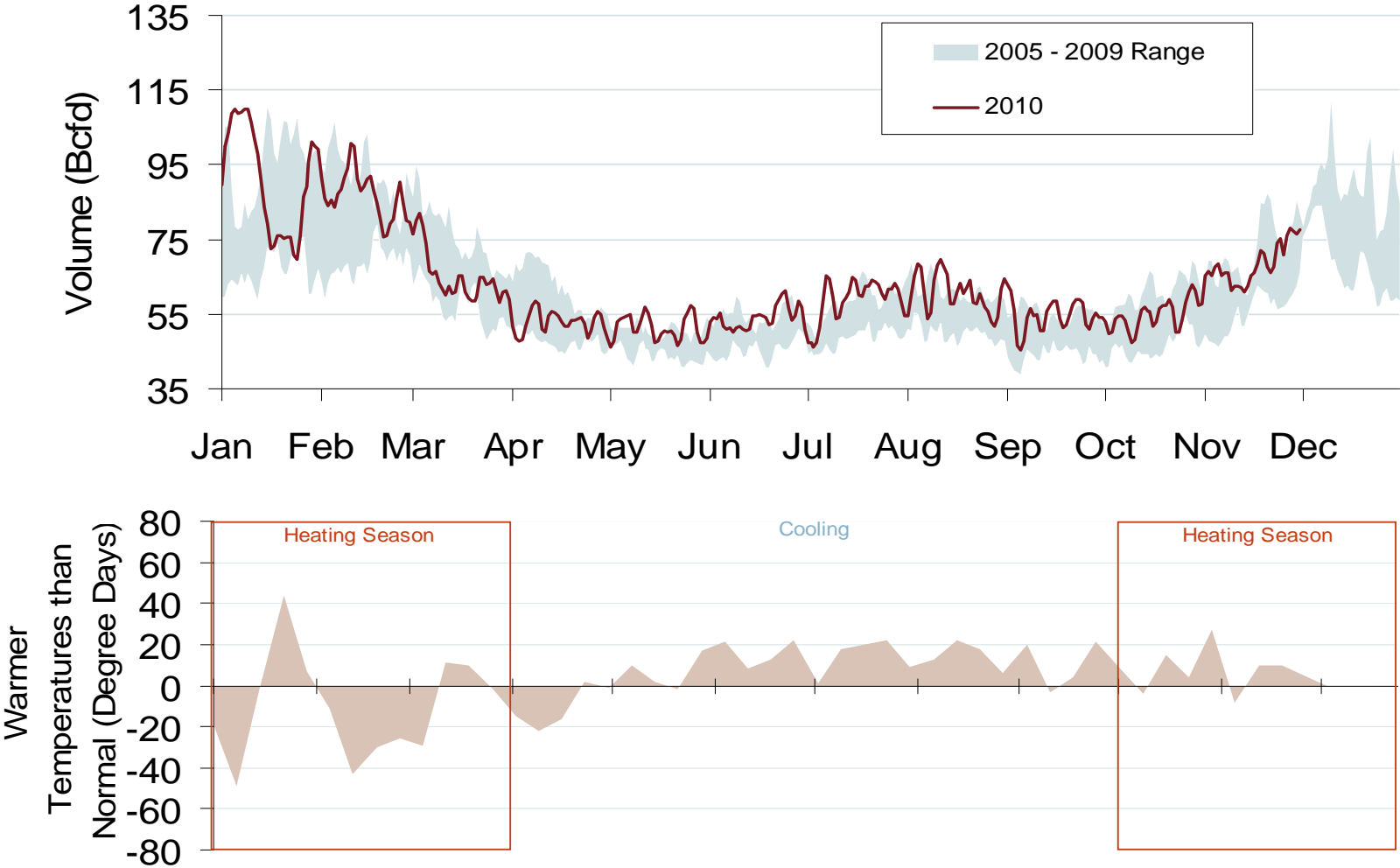
# Canadian and LNG Natural Gas Imports Into the U.S.



Source: EIA Natural Gas Monthly  
December 2010

Updated December 8, 2010

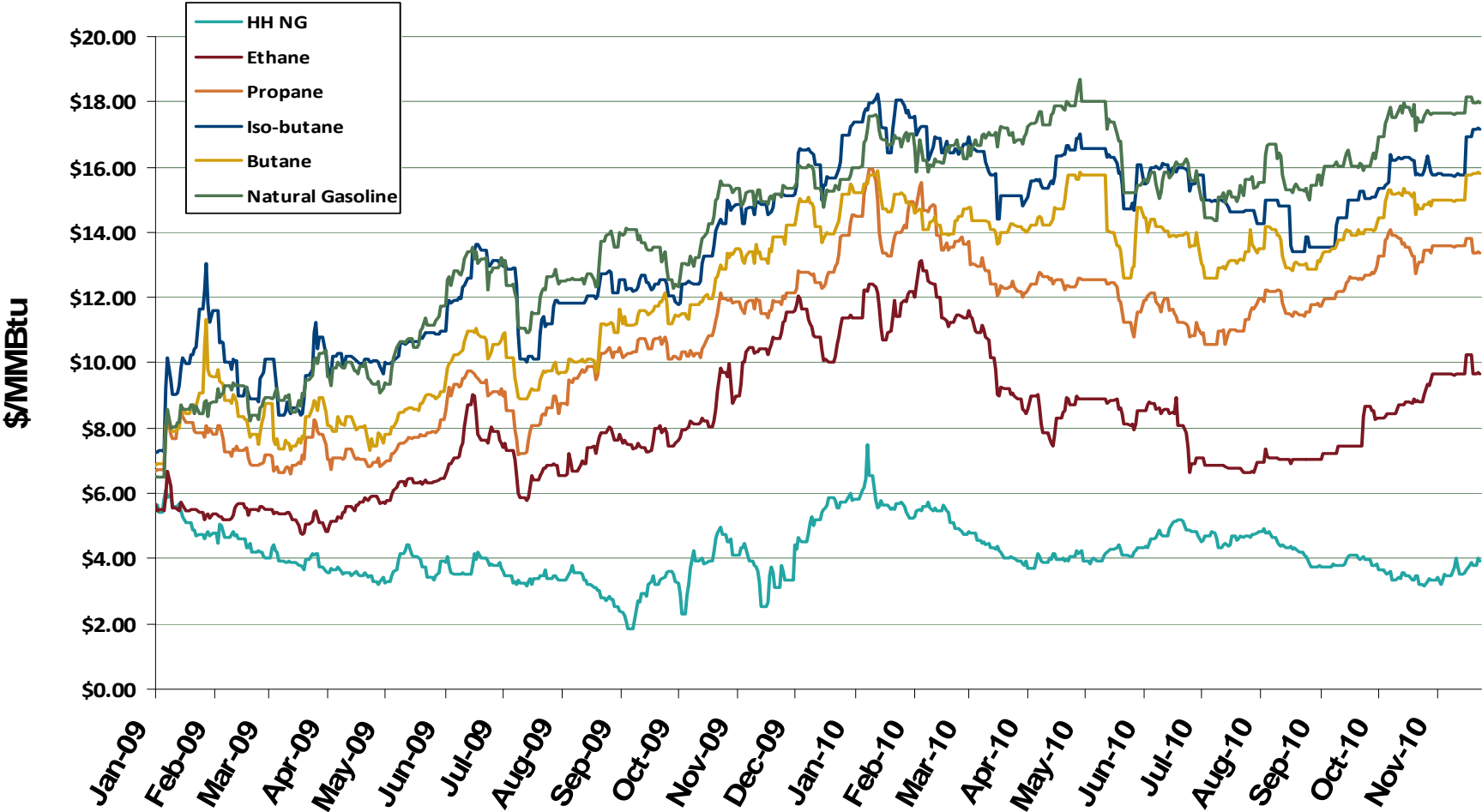
# Total U.S. Natural Gas Demand (All Sectors) and Temperatures



Source: Derived from Bentek Energy and Weekly NOAA data.  
December 2010

Updated December 8, 2010 2009

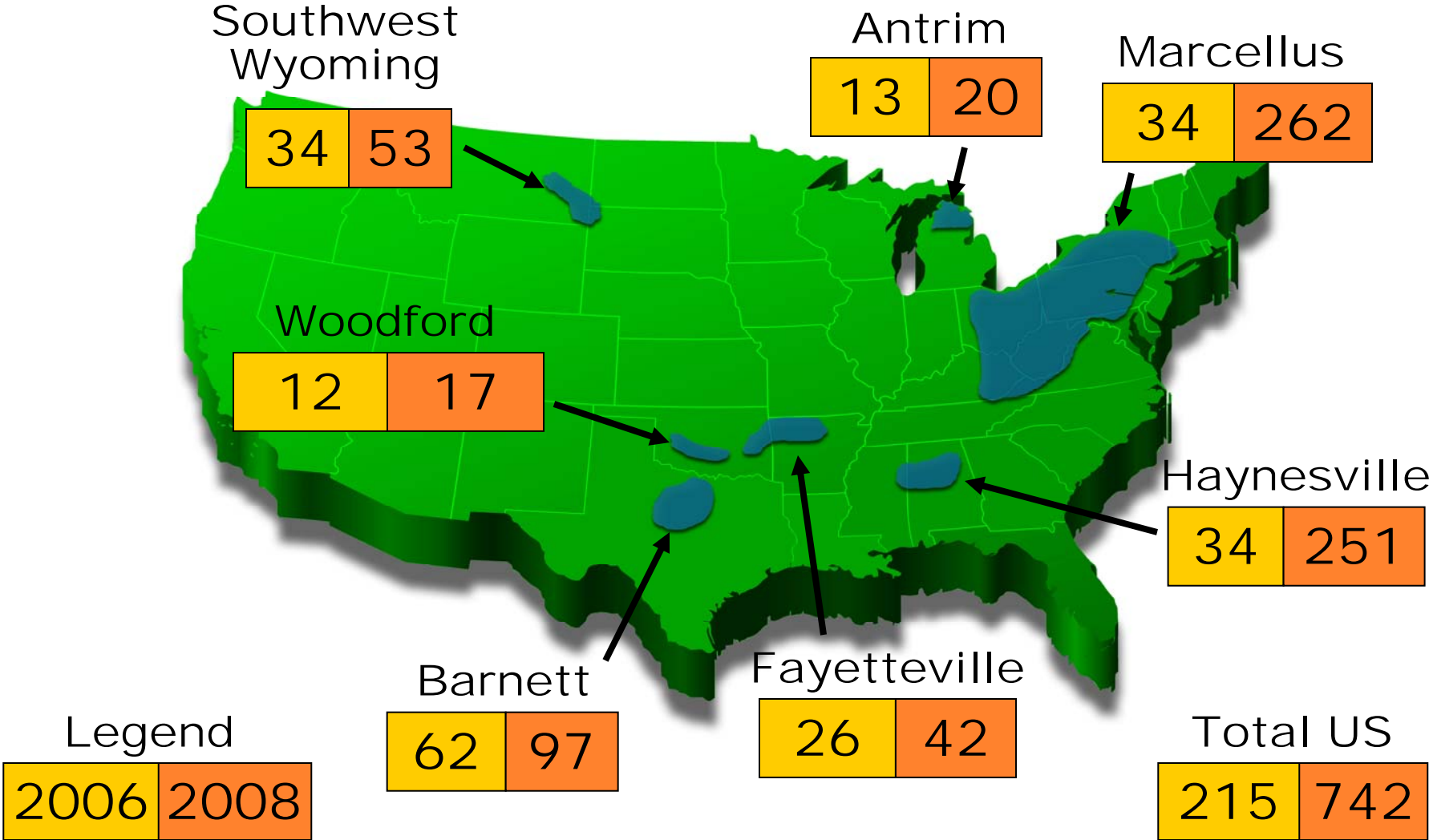
# U.S. Natural Gas vs. Natural Gas Liquids (NGL) Prices



Source: Derived from Bloomberg Data  
December 2010

Updated December 13, 2010

# Estimated Recoverable NG For Select Shale Basins (TCF)



Source: Derived From American Clean Skies Foundation  
December 2010

Updated November 18, 2008 20010