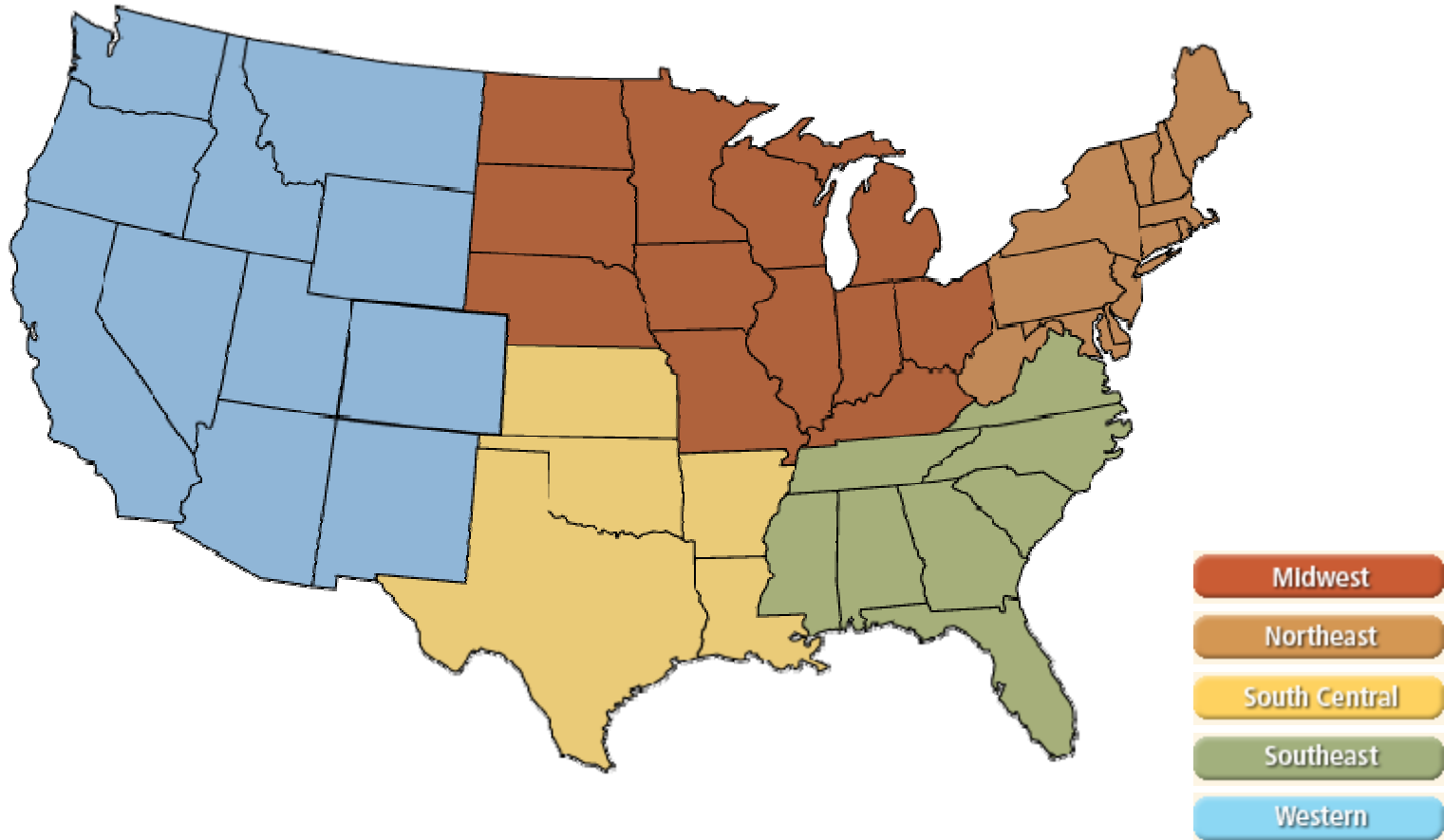
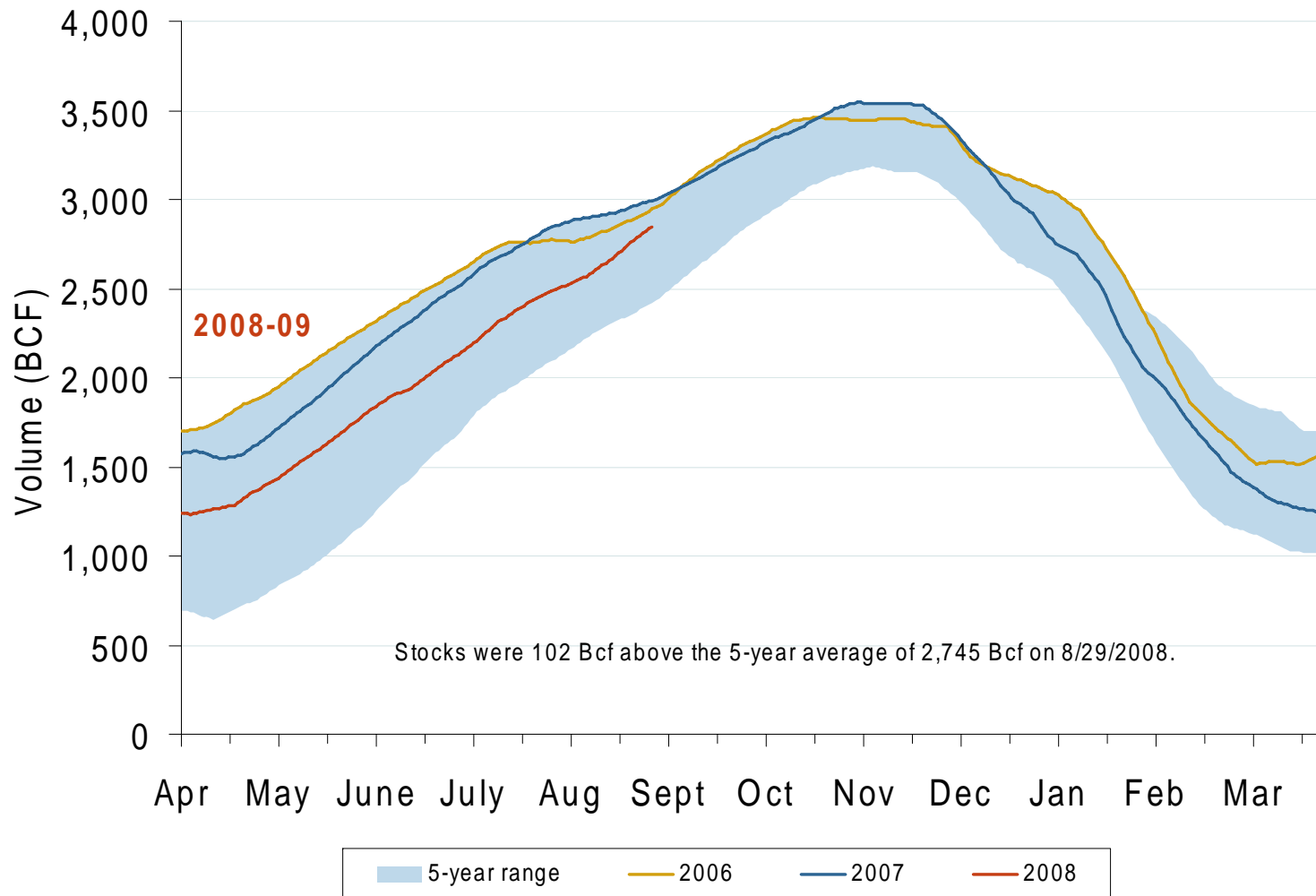


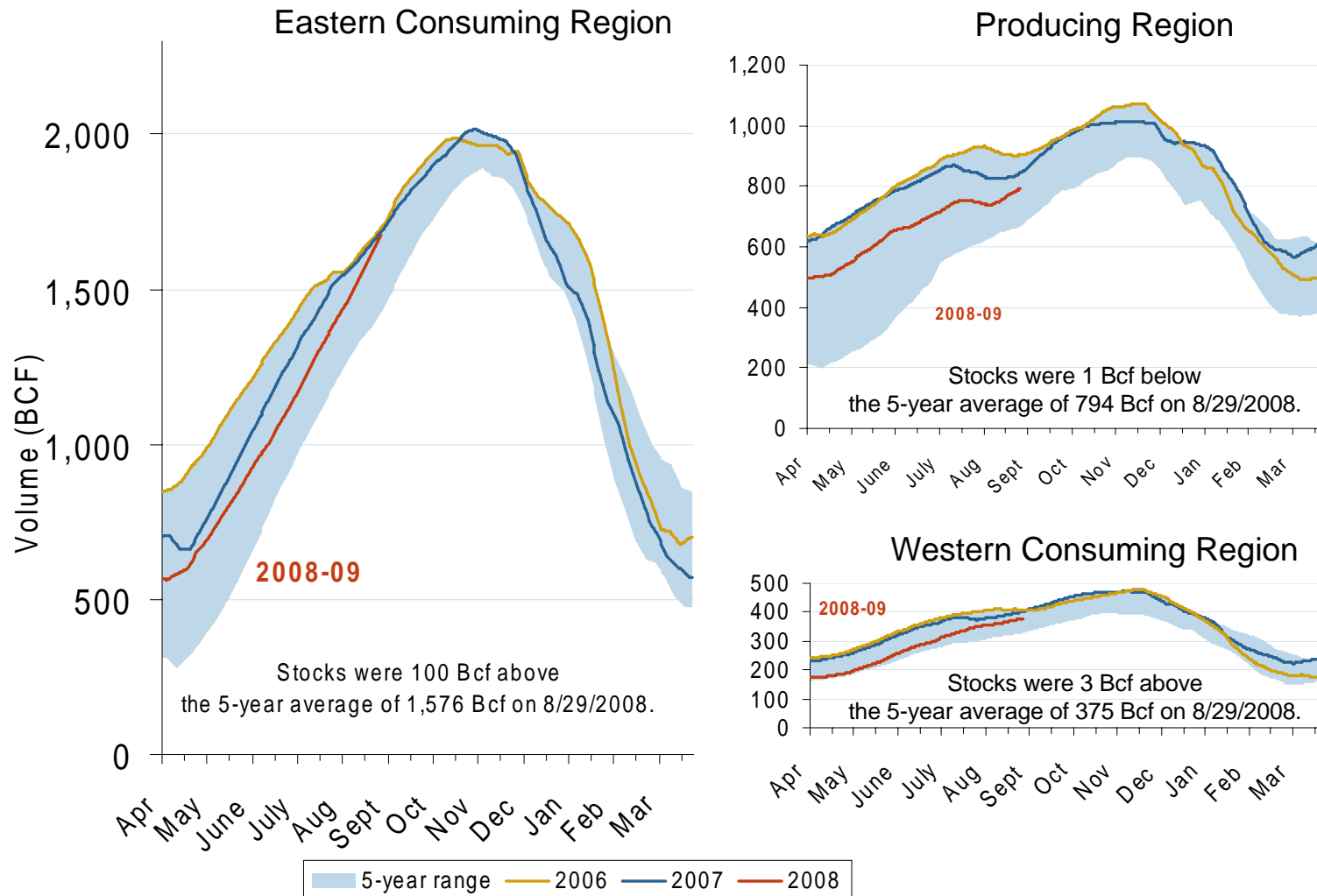
Natural Gas Market National Overview



Total U.S. Working Gas in Storage

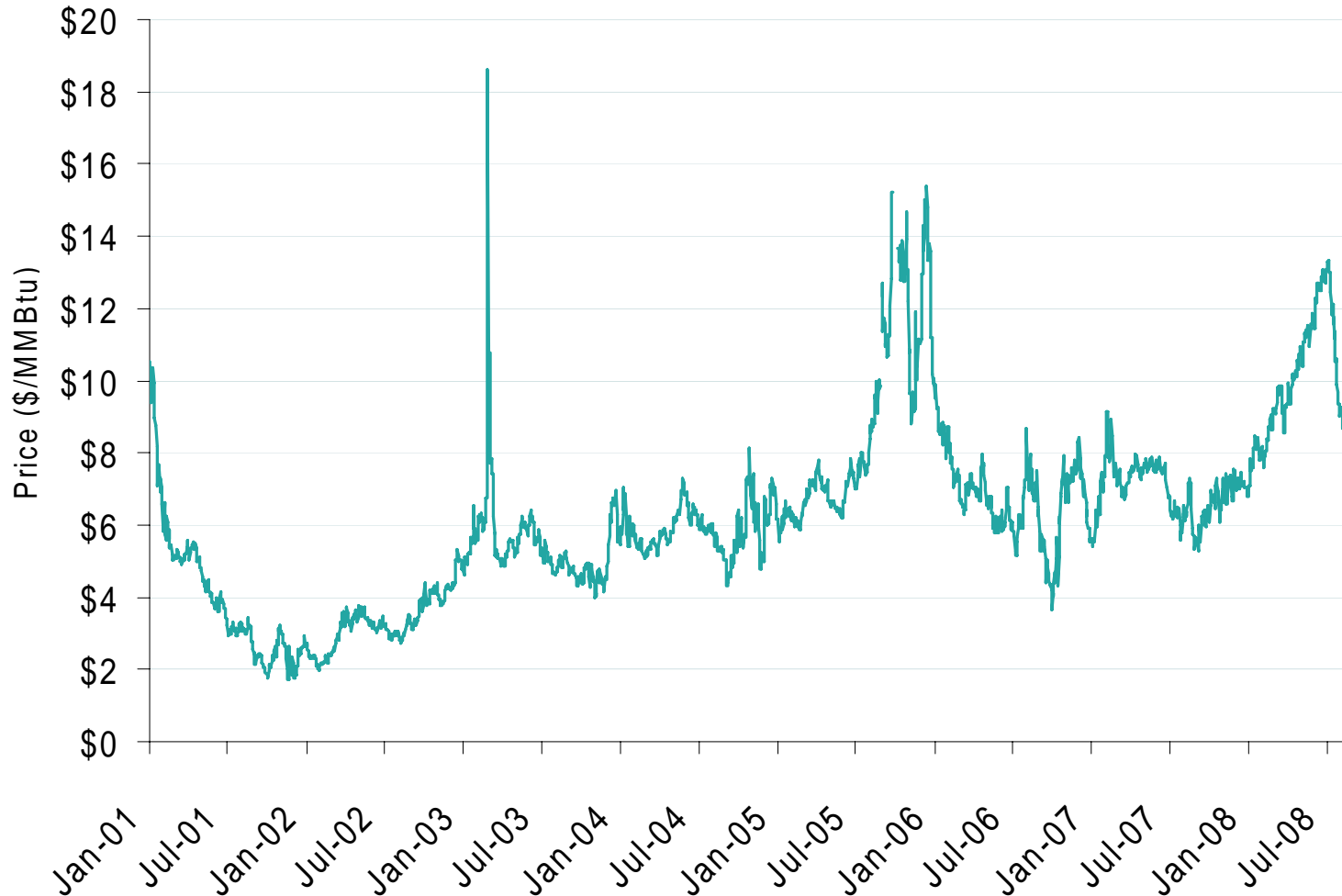


Regional Totals of Working Gas in Storage

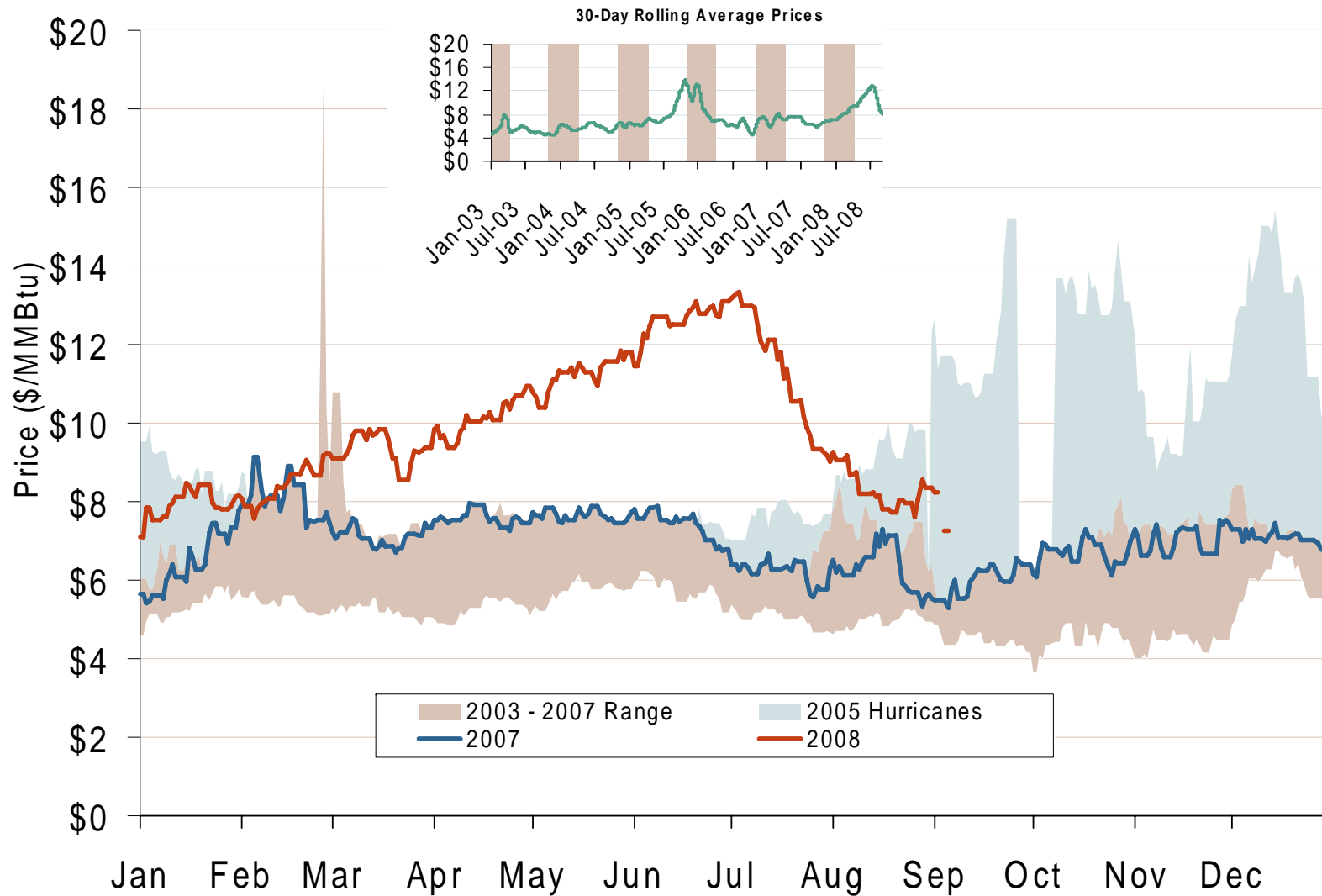


Source: Derived from EIA data.

Henry Hub Natural Gas Daily Spot Prices 2001-2008

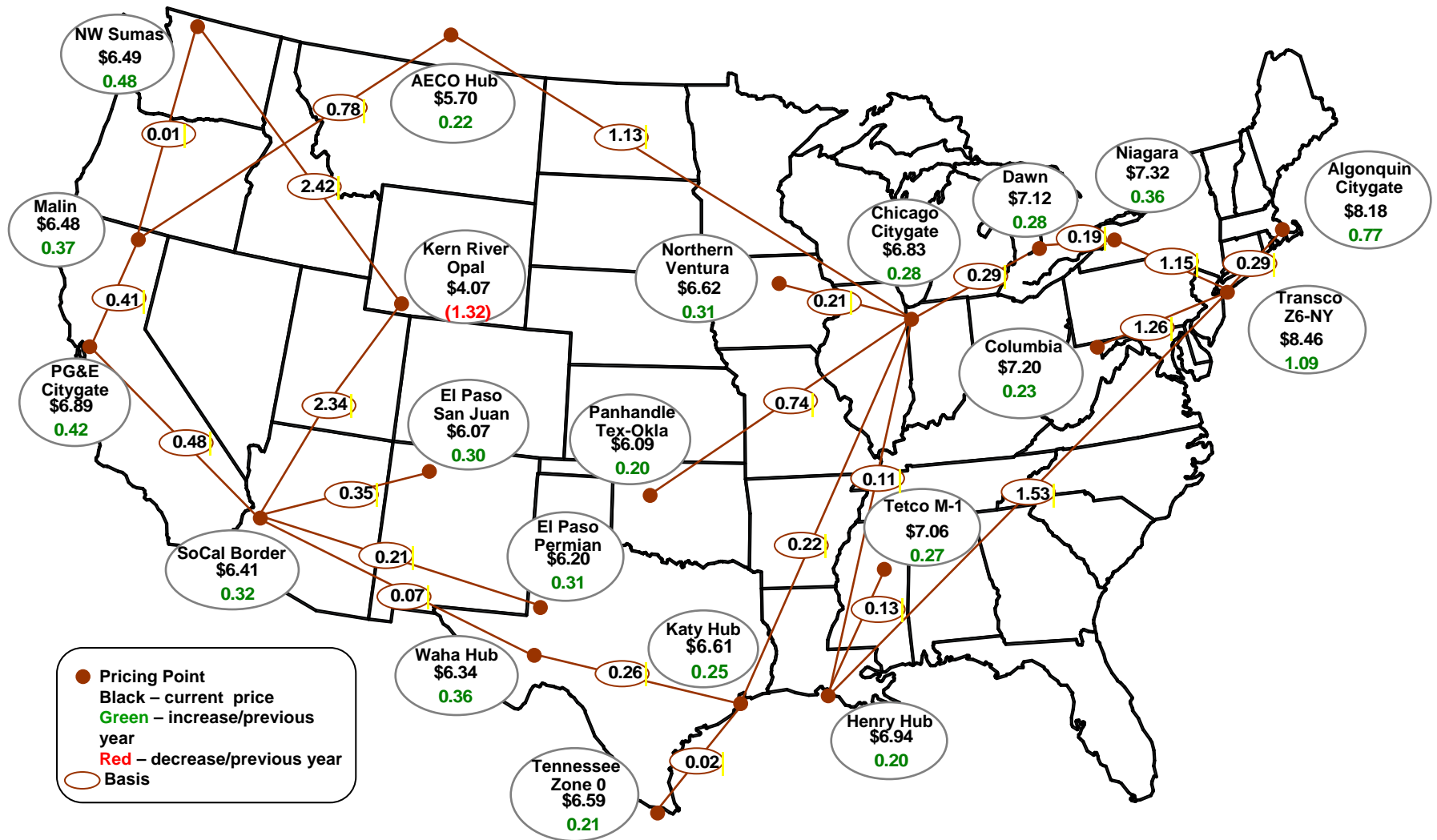


Henry Hub Natural Gas Daily Spot Prices 2007, 2008 and 2003-2007 Year Range

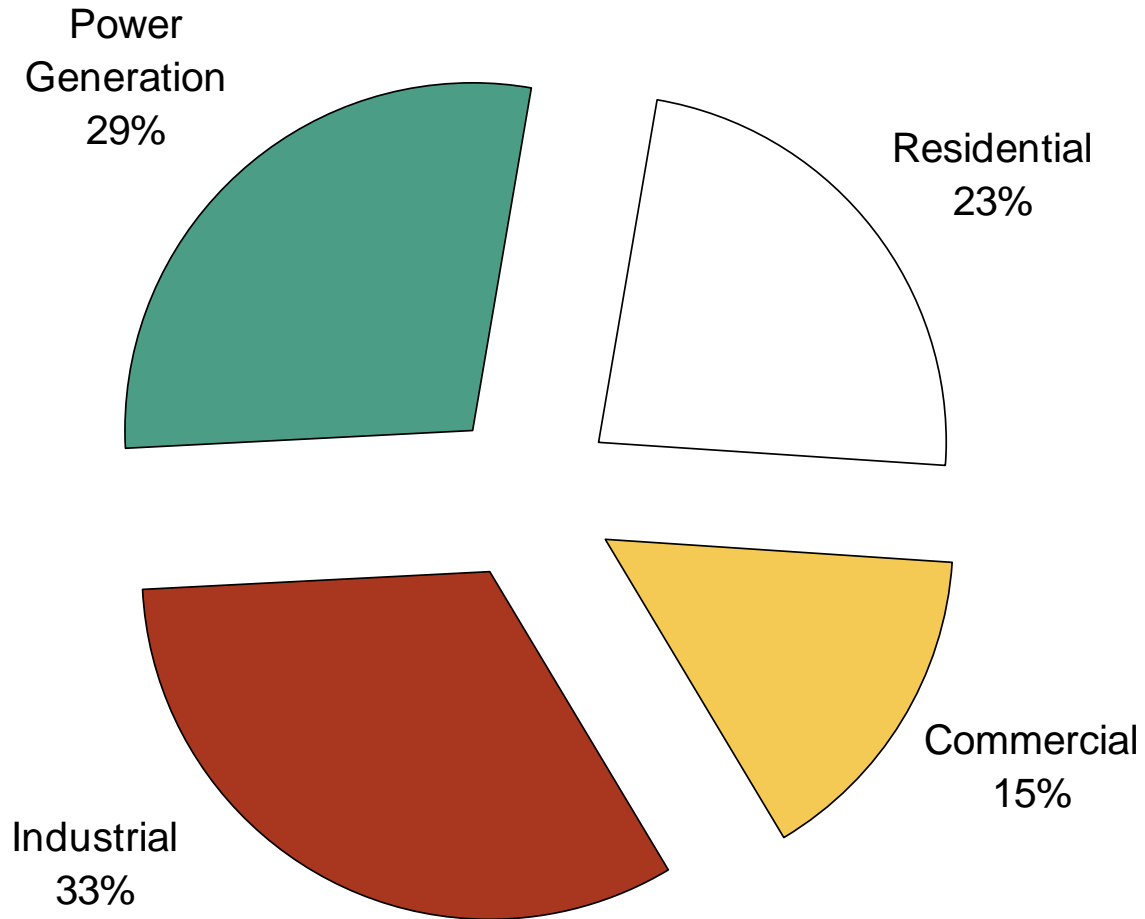


Source: Derived from *Platts* data.

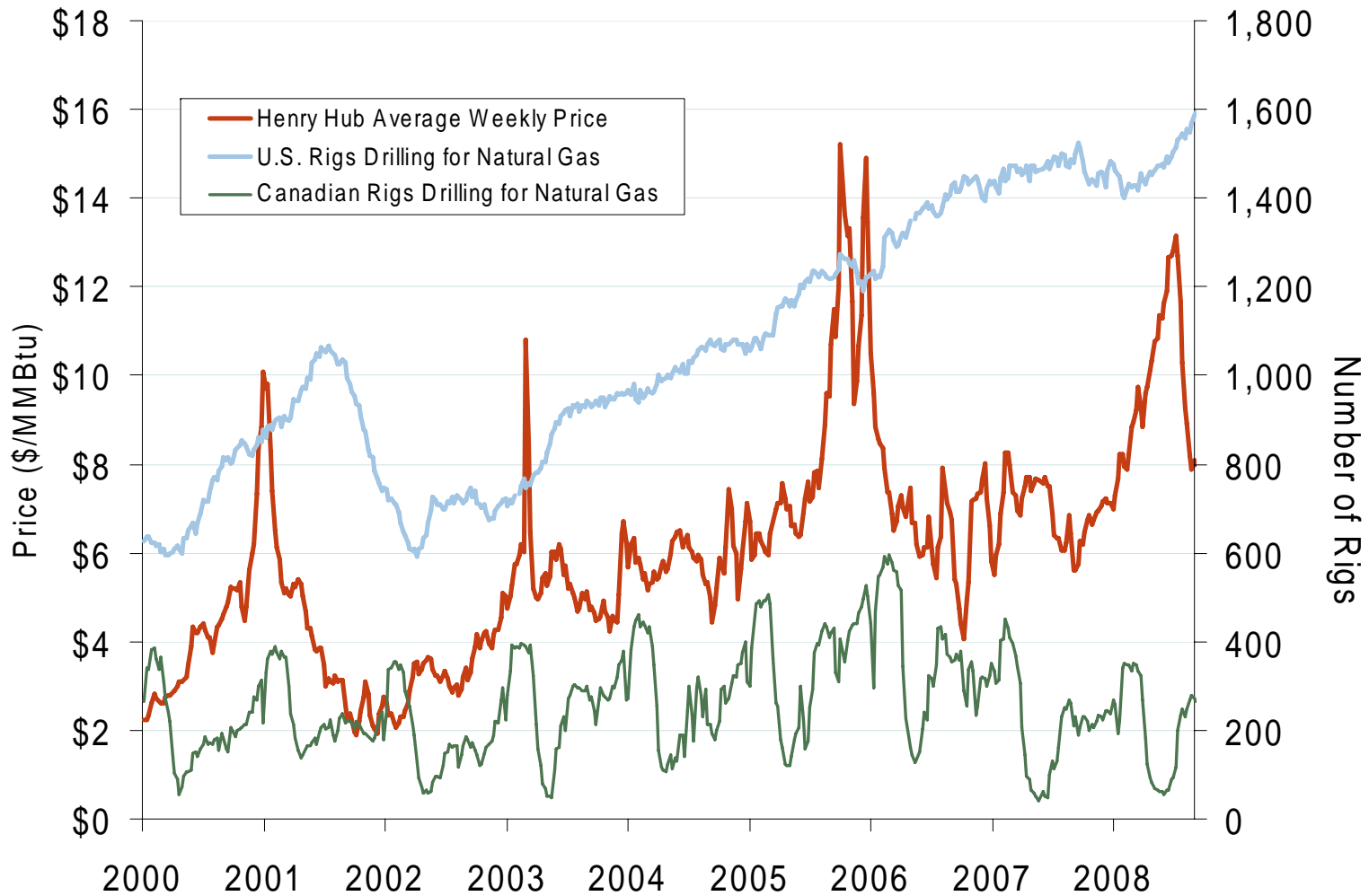
Average Spot Gas Prices, 2007



U.S. Natural Gas Demand Shares by Sector in 2005

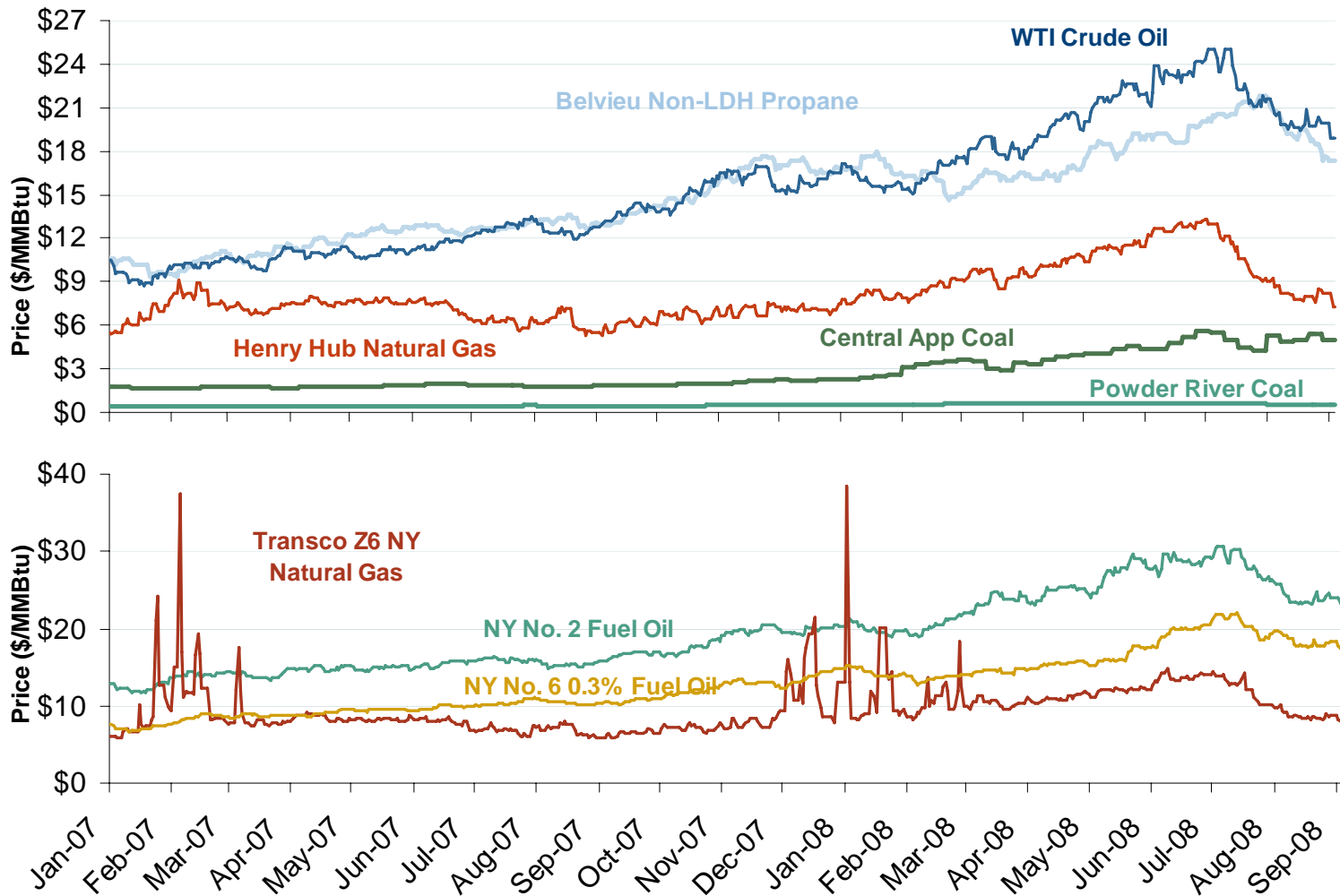


U.S. and Canadian Natural Gas Drilling Rig Count and Daily Spot Prices



Source: Derived from *Platts* and *Baker Hughes* data.

Oil, Coal and Natural Gas Daily Spot Prices

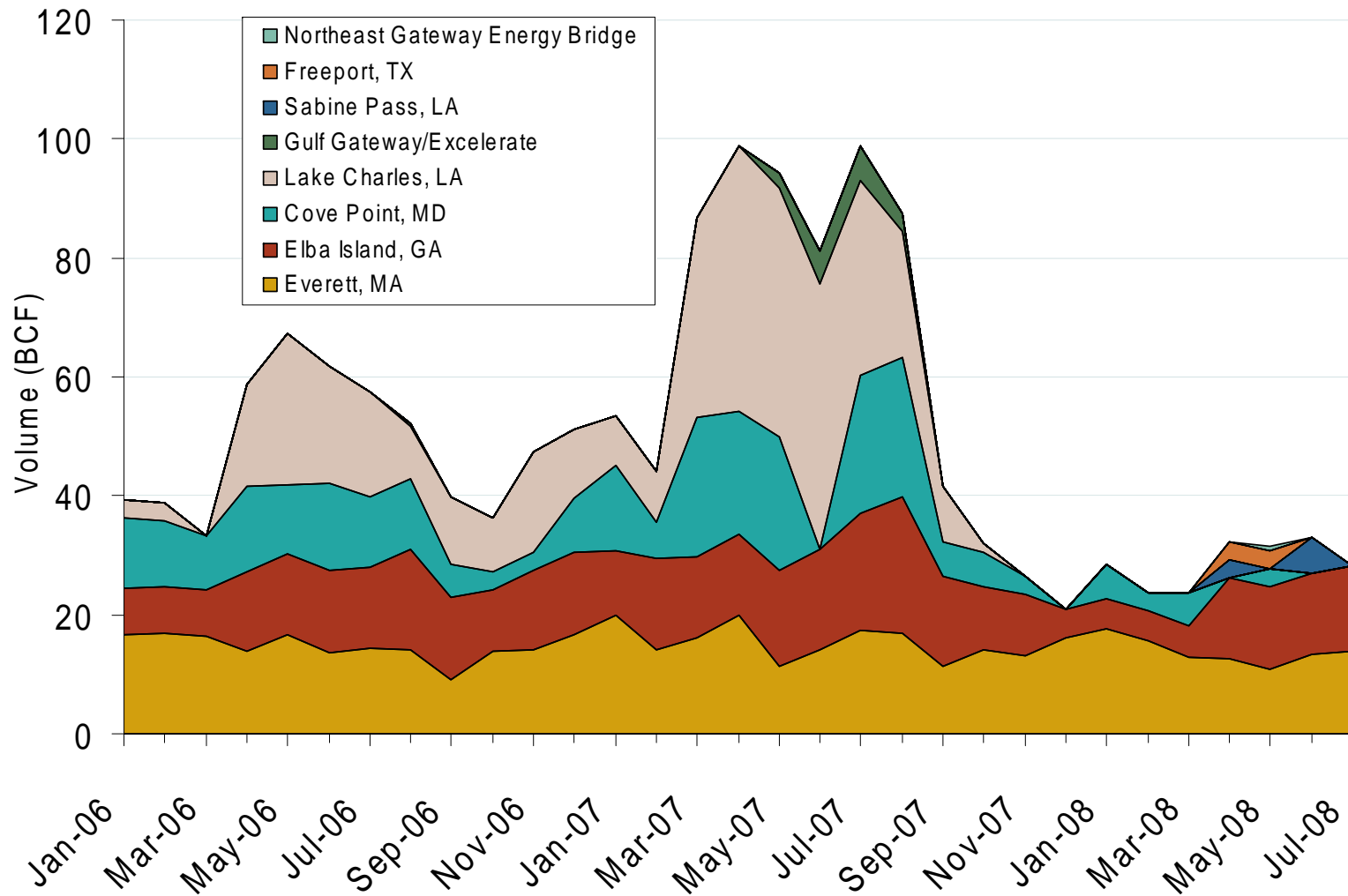


Source: Derived from ICE and Bloomberg data.

Note: Coal prices are quoted in \$/ton. Conversion factors to \$/MMBtu are based on contract specifications of 12,000 btus/pound for Central Appalachian coal and 8800 btus/pound for Powder River Basin coal.

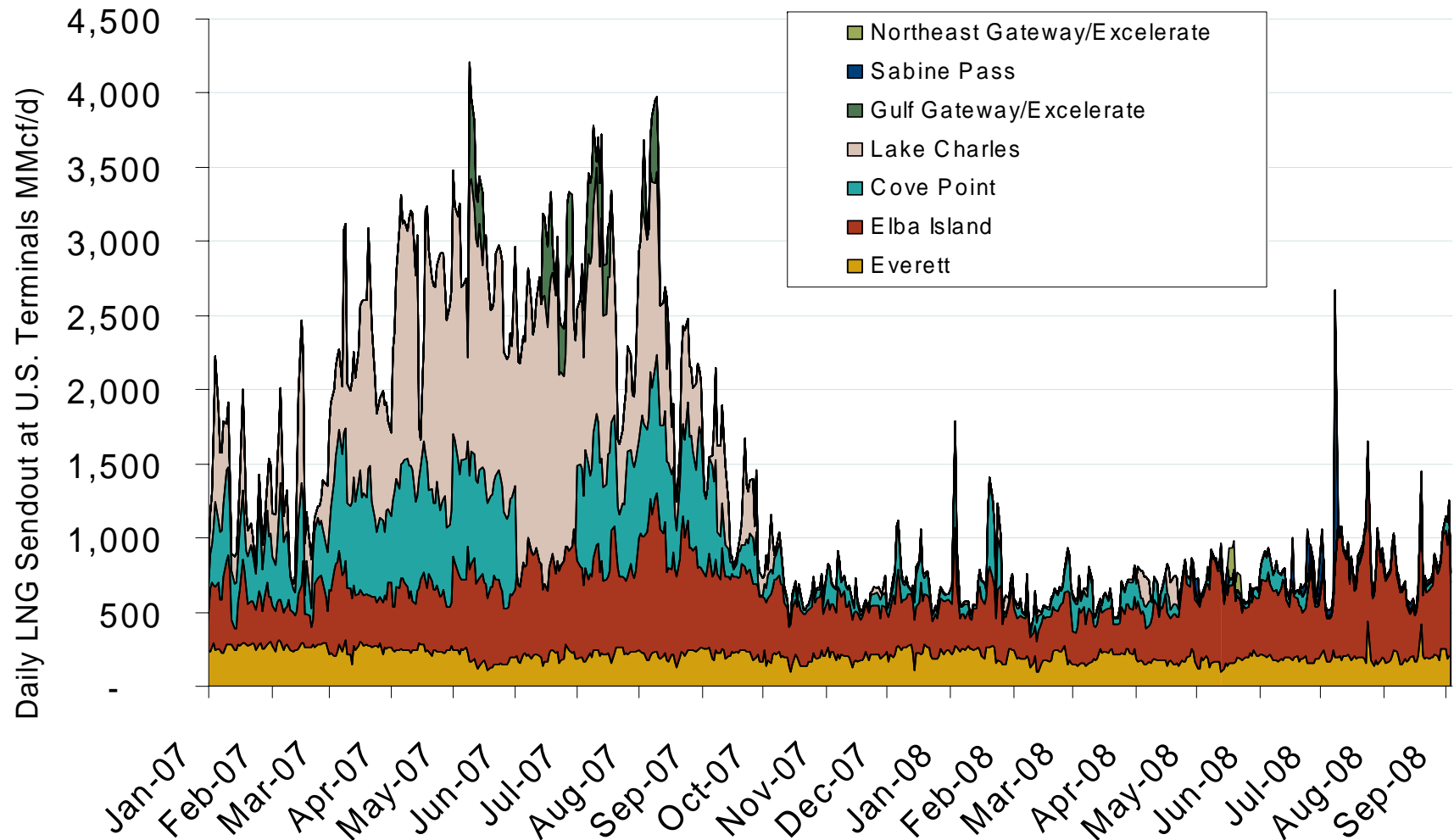
Updated September 5, 2008

Monthly Gas Imports at Existing U.S. LNG Facilities



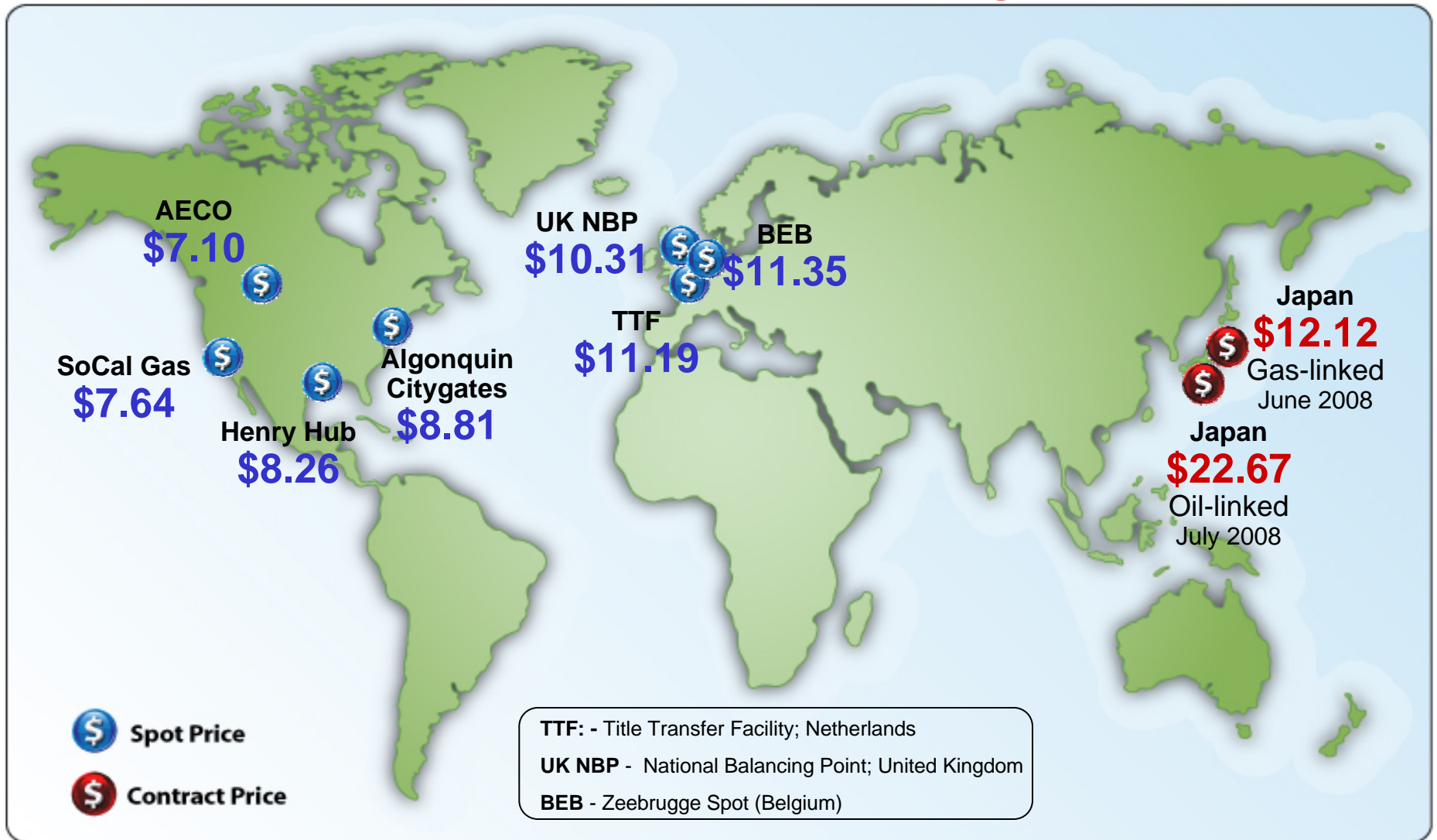
Source: Derived from DOE Office of Fossil Energy data.

Daily Gas Sendout from Existing LNG Facilities



Source: Derived from *Bentek* data. Excludes Everett LNG delivered via truck and consumed by the Mystic plant as well as Freeport LNG which flows via intrastate pipelines.

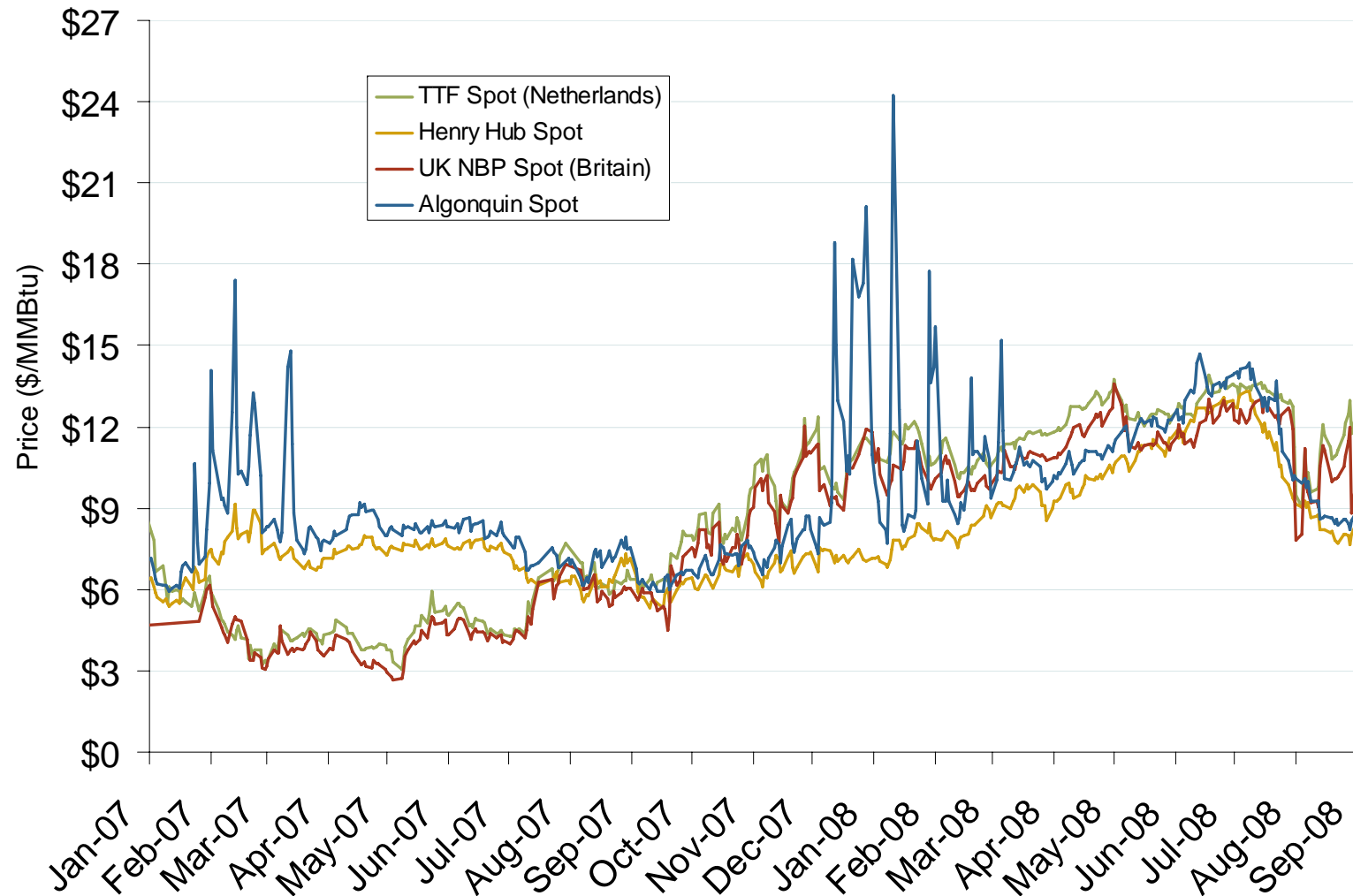
World Natural Gas Prices for August 2008



Source: Derived from *Bloomberg, ICE, ICAP and LNG Japan Corp.* data. Prices are a monthly average of daily spot prices, except Japanese prices are monthly contract prices. All prices in \$US/MMBtu.

Updated September 5, 2008

Atlantic Basin European and US Spot Natural Gas Prices



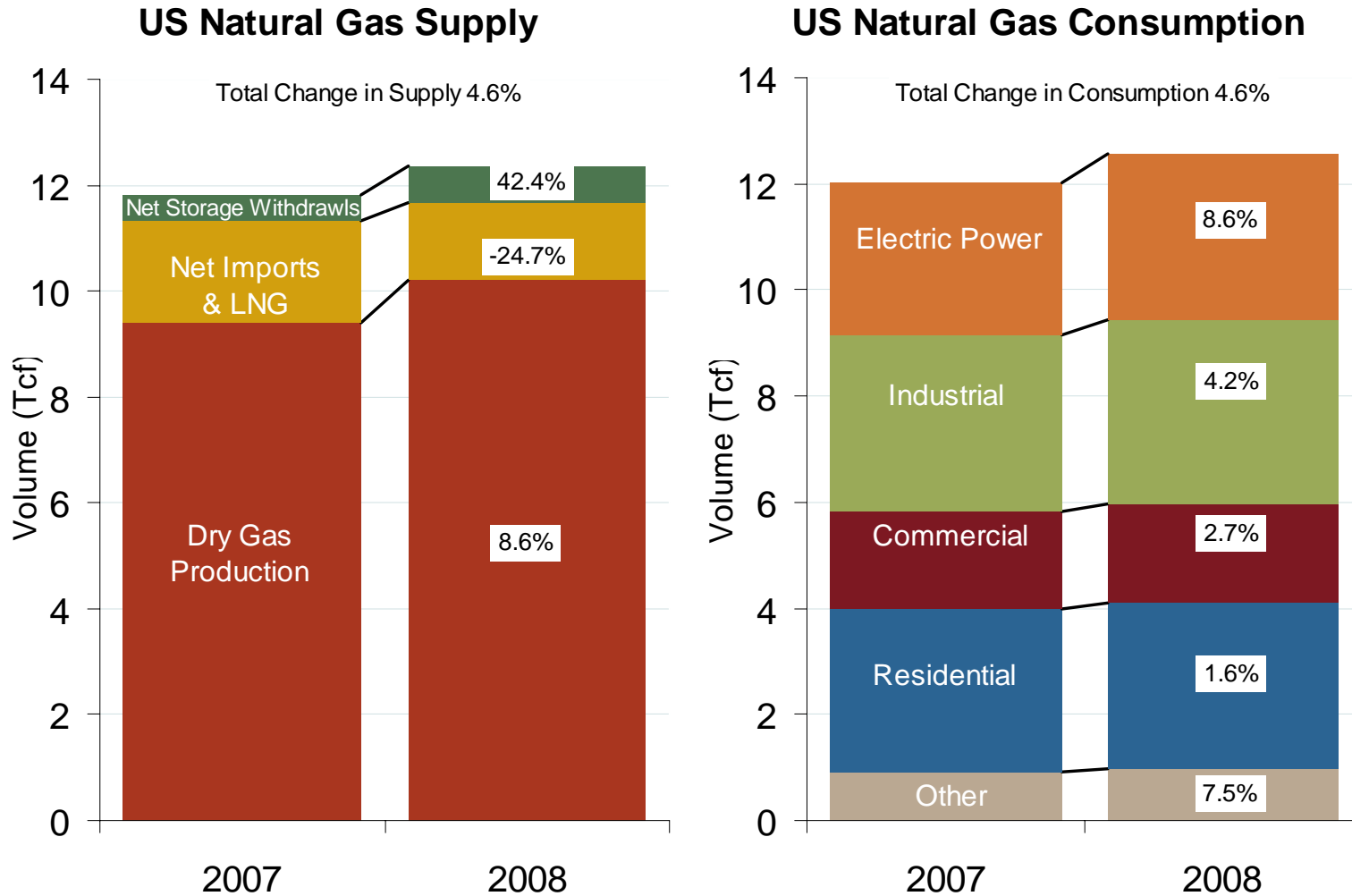
Source: Derived from *Bloomberg* and *ICE* data.

Henry Hub and AECO Prompt-Month Futures Prices

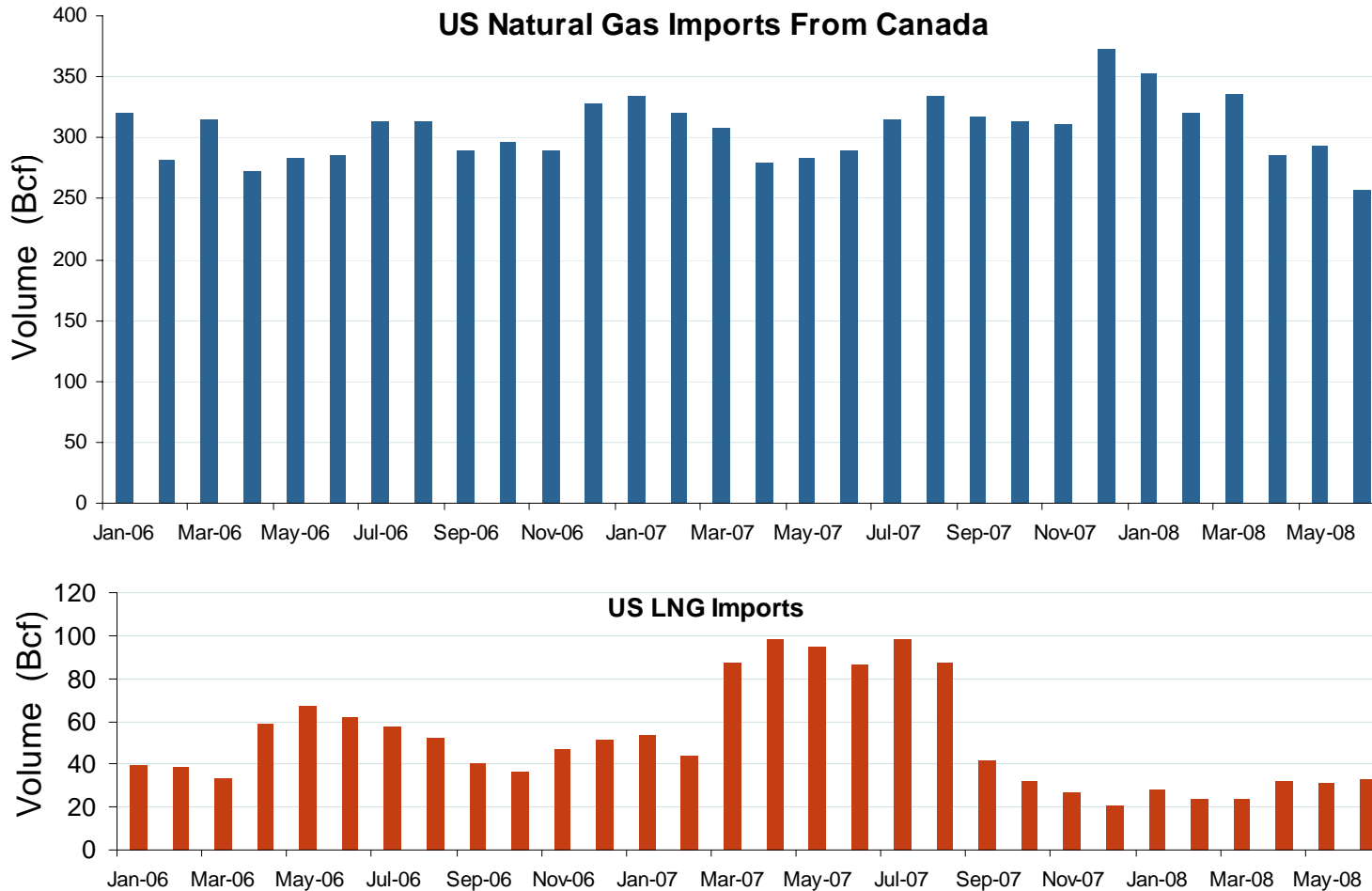


Source: Derived from ICE data.

U.S. Natural Gas Supply and Consumption Jan-Jun



Canadian and LNG Natural Gas Imports



Source: EIA Natural Gas Monthly, July 2008.