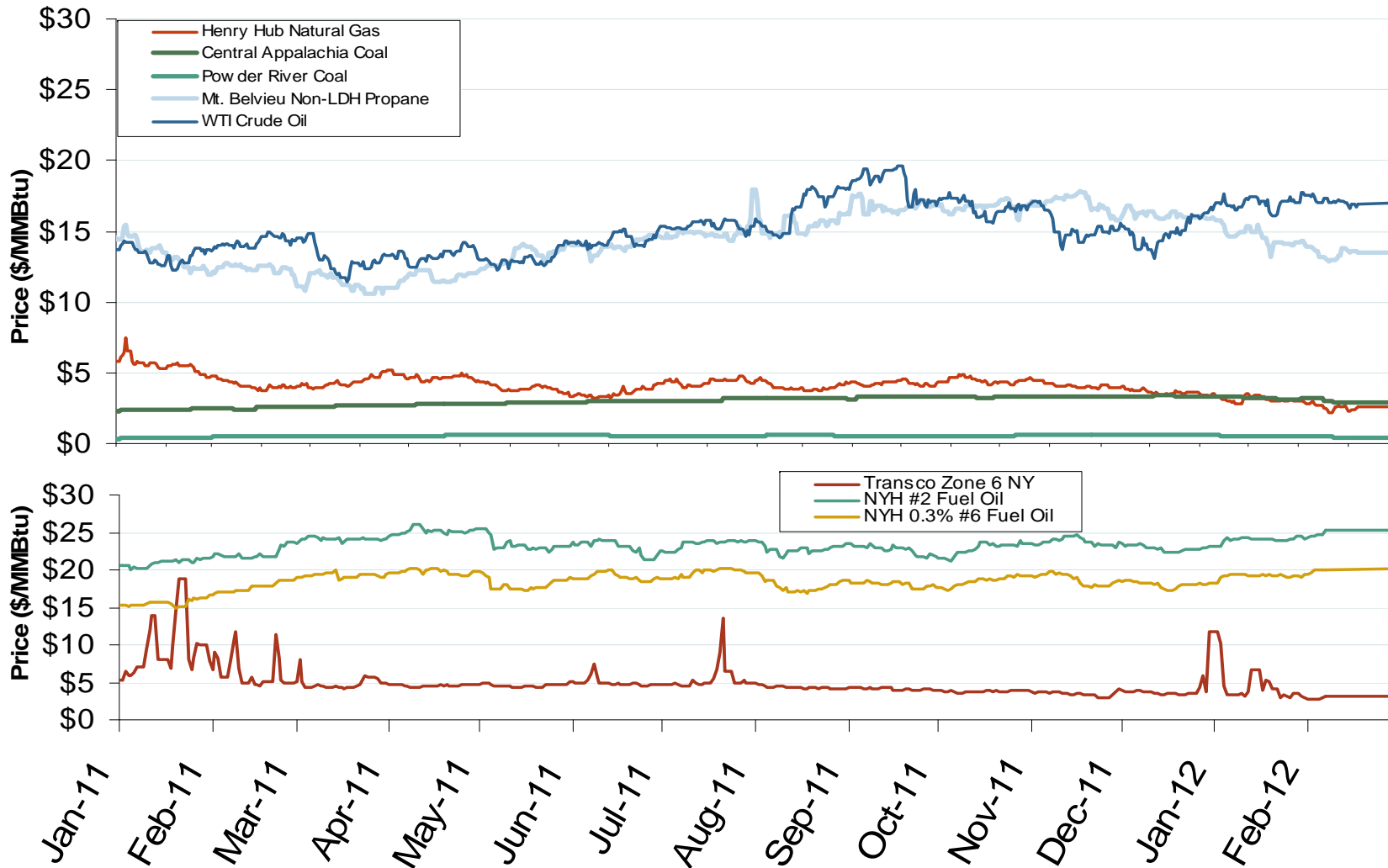


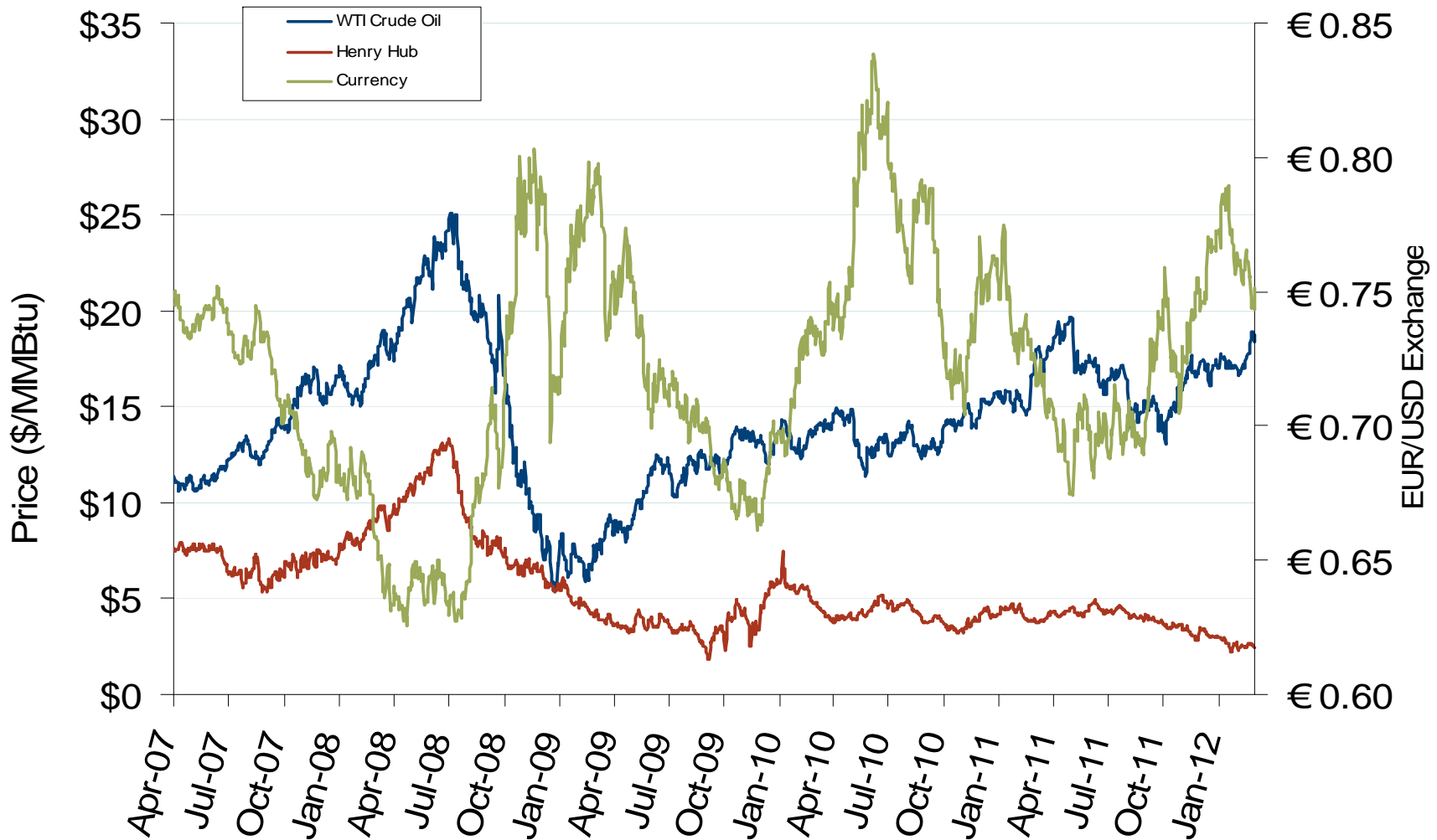
Oil, Coal, Natural Gas and Propane Daily Spot Prices



Notes: Coal prices are quoted in \$/ton. Conversion factors to \$/MMBtu are based on contract specifications of 12,000 btus/pound for Central Appalachian coal and 8800 btus/pound for Powder River Basin coal

Source: Derived from ICE and Bloomberg data

Oil, Natural Gas and Currency Spot Prices



U.S. Coal Stockpiles at Electric Power Generating Facilities

