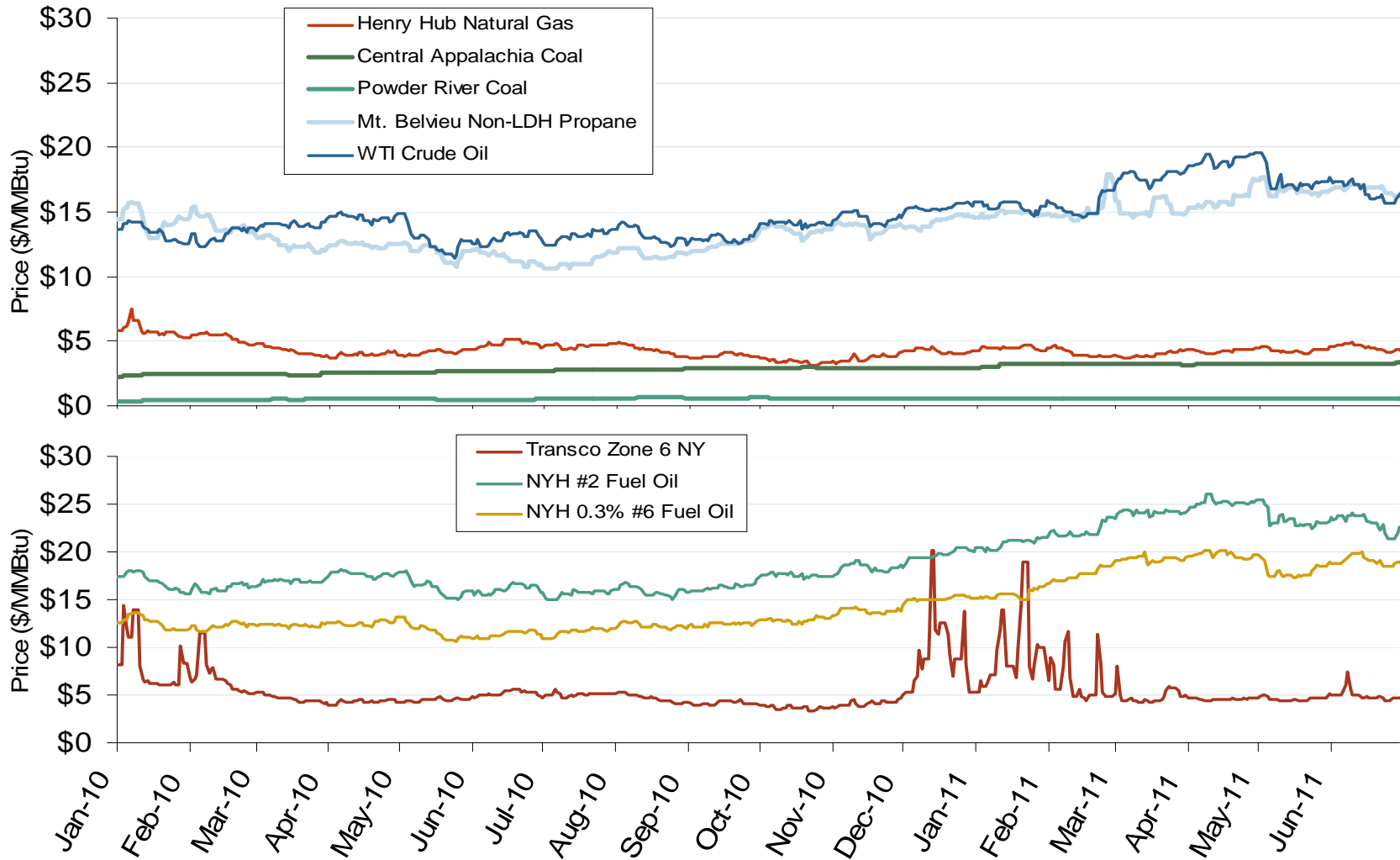


# Oil, Coal, Natural Gas and Propane Daily Spot Prices

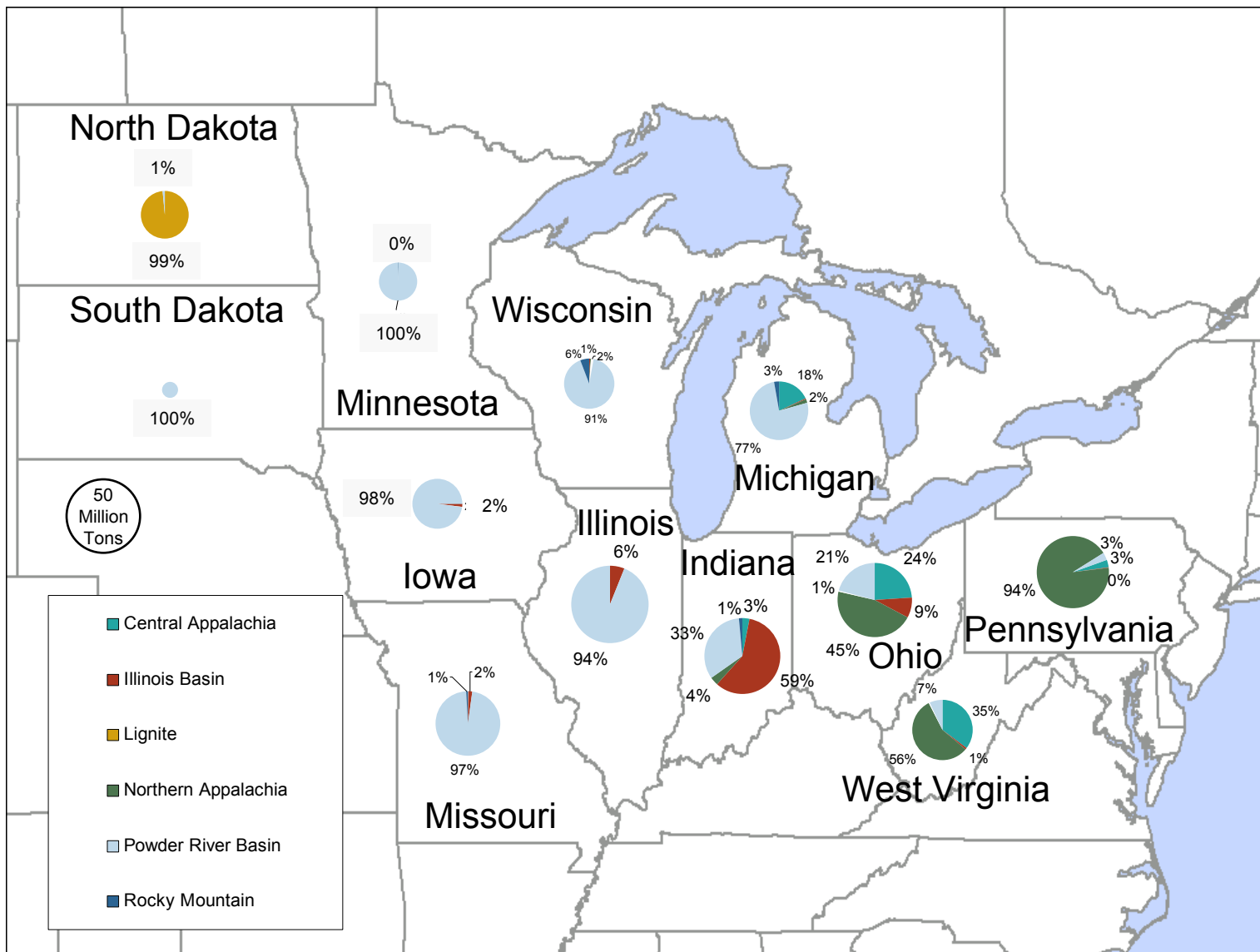


Source: Derived from ICE and Bloomberg data.

Note: Coal prices are quoted in \$/ton. Conversion factors to \$/MMBtu are based on contract specifications of 12,000 btus/pound for Central Appalachian coal and 8800 btus/pound for Powder River Basin coal.

Updated July 7, 2011

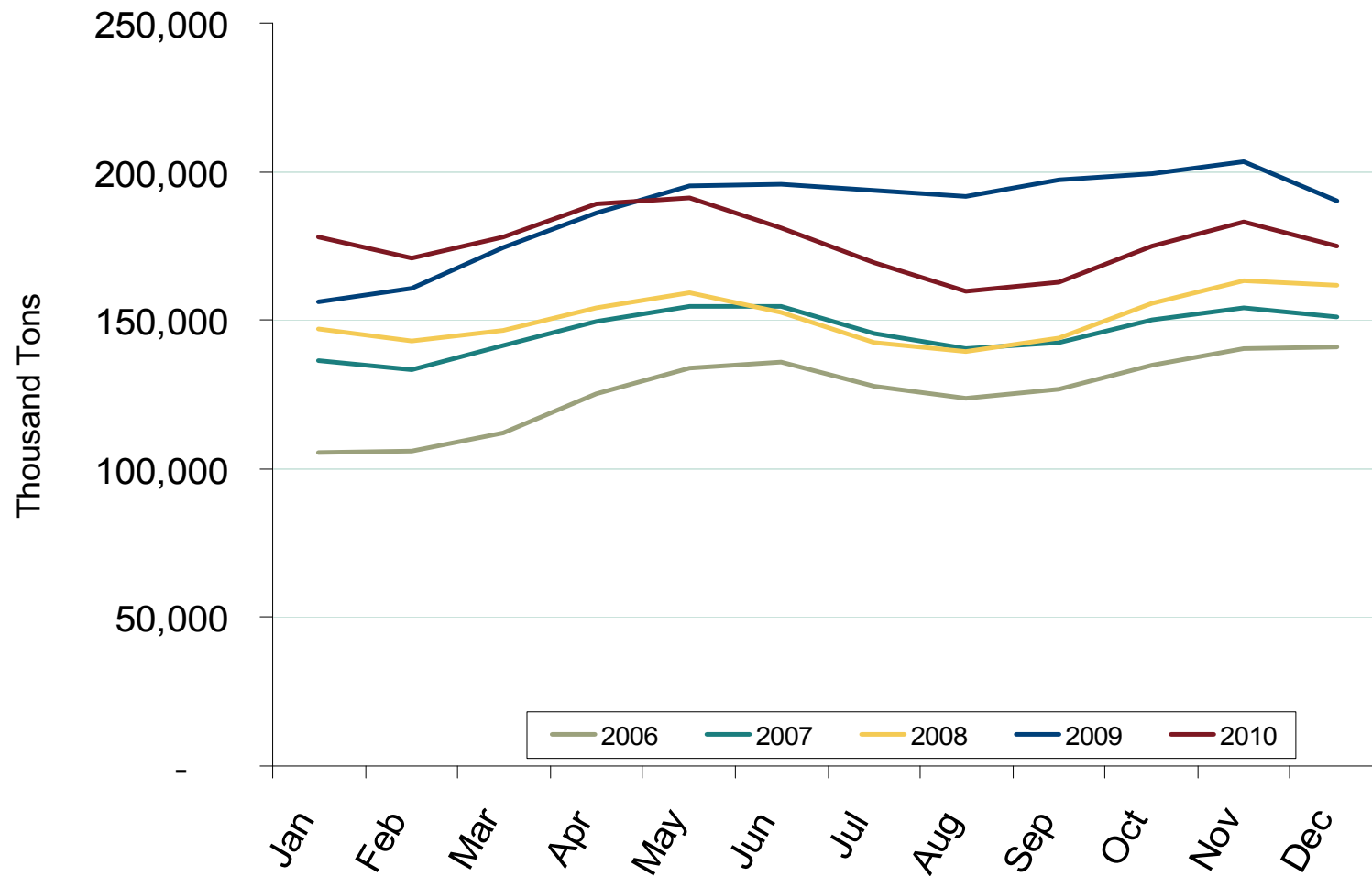
# 2008 Coal Shipment Origins by Supply Basin



Source: Derived from FERC and EIA data.

Updated March 23, 2009

## U.S. Coal Stockpiles at Electric Power Generating Facilities



Source: Derived from *Energy Information Administration*. Excludes Industrial and Commercial Plants.

Updated: April 07, 2011