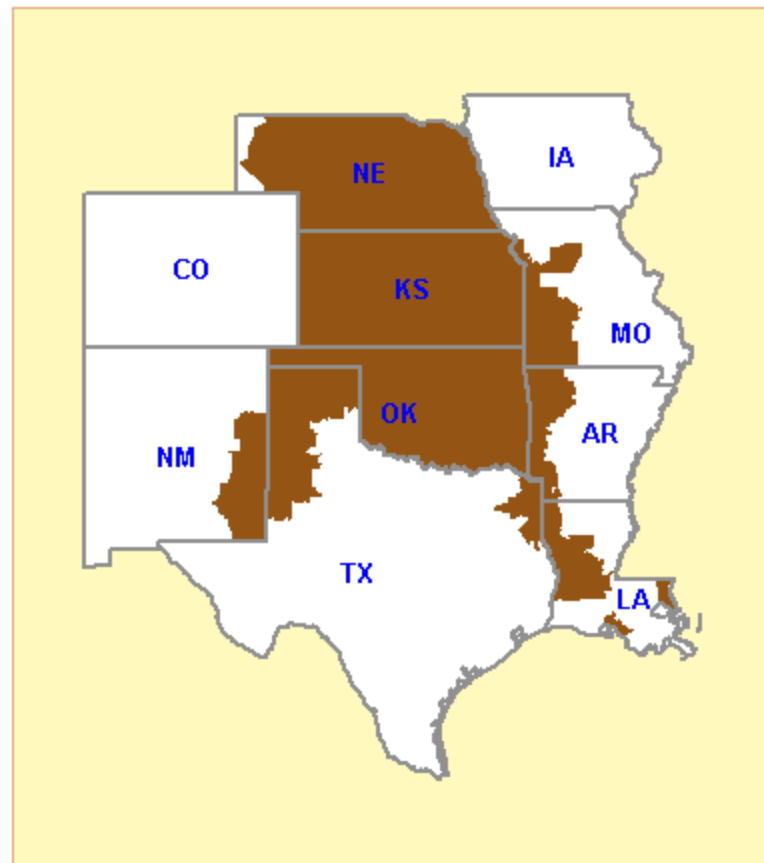


## Southwest Power Pool (SPP) Electric Region



## Southwest Power Pool Electric Market: Overview and Focal Points

Federal Energy Regulatory Commission • Market Oversight • [www.ferc.gov/oversight](http://www.ferc.gov/oversight)

### Overview

#### Geography

On April 1, 2009, SPP added a new municipal member, Lincoln Electric System (LES); and two new state agencies, Nebraska Public Power District (NPPD) and Omaha Public Power District (OPPD).

**States covered:** Kansas, Oklahoma, most of Nebraska, and parts of New Mexico, Texas, Louisiana, Missouri, Mississippi and Arkansas

**Reliability region:** Southwest Power Pool (SPP)

**Balancing authorities:** Balancing authorities are responsible for managing the minute-to-minute supply/demand balance for electricity within their borders to assure reliability. The SPP regional footprint is comprised of 16 balancing authorities:

CSWS - (AEPW) American Electric Power West \*

EDE - Empire District Electric

INDN - Independence Power & Light

KCPL - Kansas City Power & Light

LEPA - Louisiana Energy & Power Authority

OKGE - OG+E Electric Services

SPA - Southwestern Power Administration

WR - Westar Energy

CLEC - CLECO Power

GRDA - Grand River Dam Authority

KACY - Kansas City Board of Public Utilities

Lafa - City of Lafayette, Louisiana

MPS - KCP&L Greater Missouri Operations

SECI - Sunflower Electric

SPS - Southwestern Public Service

WFEC - Western Farmers Electric Cooperative

\* Formerly Central and South West Services

There are five different SPP footprints: Regional Entity, Reserve Sharing Group, Reliability Coordinator (RC) Area, Regional Transmission Organization/Tariff, EIS Market Region. More information regarding these footprints is available at:

[http://www.spp.org/publications/SPP\\_Footprints.pdf](http://www.spp.org/publications/SPP_Footprints.pdf)

## Southwest Power Pool Electric Market: Overview and Focal Points

Federal Energy Regulatory Commission • Market Oversight • [www.ferc.gov/oversight](http://www.ferc.gov/oversight)

### **RTO/ISO**

Southwest Power Pool (SPP) (granted RTO status in 2004) provides transmission service on the transmission facilities owned by its members and operates the region's real-time energy imbalance service (EIS) market. Market participants trade physical electricity bilaterally, either directly or through brokers, and through the EIS market.

[SPP 2008 State of the Markets Report](#)

### **Market Monitor:**

Richard Dillon – Director, Market Development & Analysis  
Boston Pacific Company, Inc. – External Market Advisor

### **Generation/Supply**

**Marginal fuel type:** Natural gas (55%) and coal (35%)

**Firm generating capacity - summer 2008:** 50,600 MW

**Capacity reserve - summer 2008:** 7,709 MW

**Reserve margin - summer 2008:** 18%

### **Demand**

**Regional Footprint Peak Demand for 2008:** 42,891 MW, reached in August.

**Peak Demand Growth 2007-2008:** 0.7%

#### **All time peak demand:**

Reliability Footprint: 43.3 GW (set August 14, 2007)

Market Footprint: 35.9 GW (set August 14, 2007)

In the summer of 2007 demand reached record levels due to extremely hot weather.

## Southwest Power Pool Electric Market: Overview and Focal Points

Federal Energy Regulatory Commission • Market Oversight • [www.ferc.gov/oversight](http://www.ferc.gov/oversight)

### Demand (continued)

#### Summer Peak Demand (GW):

2004: 39.4  
 2005: 40.5  
 2006: 42.2  
 2007: 43.2  
 2008: 42.9

### Spot Prices

Annual Average of Platts SPP North Daily Spot Price Index

**2004:** \$45.19/MWh  
**2005:** \$67.44/MWh  
**2006:** \$55.84/MWh  
**2007:** \$60.21/MWh  
**2008:** \$68.77/MWh

Locational Imbalance Prices (From SPP's Monthly

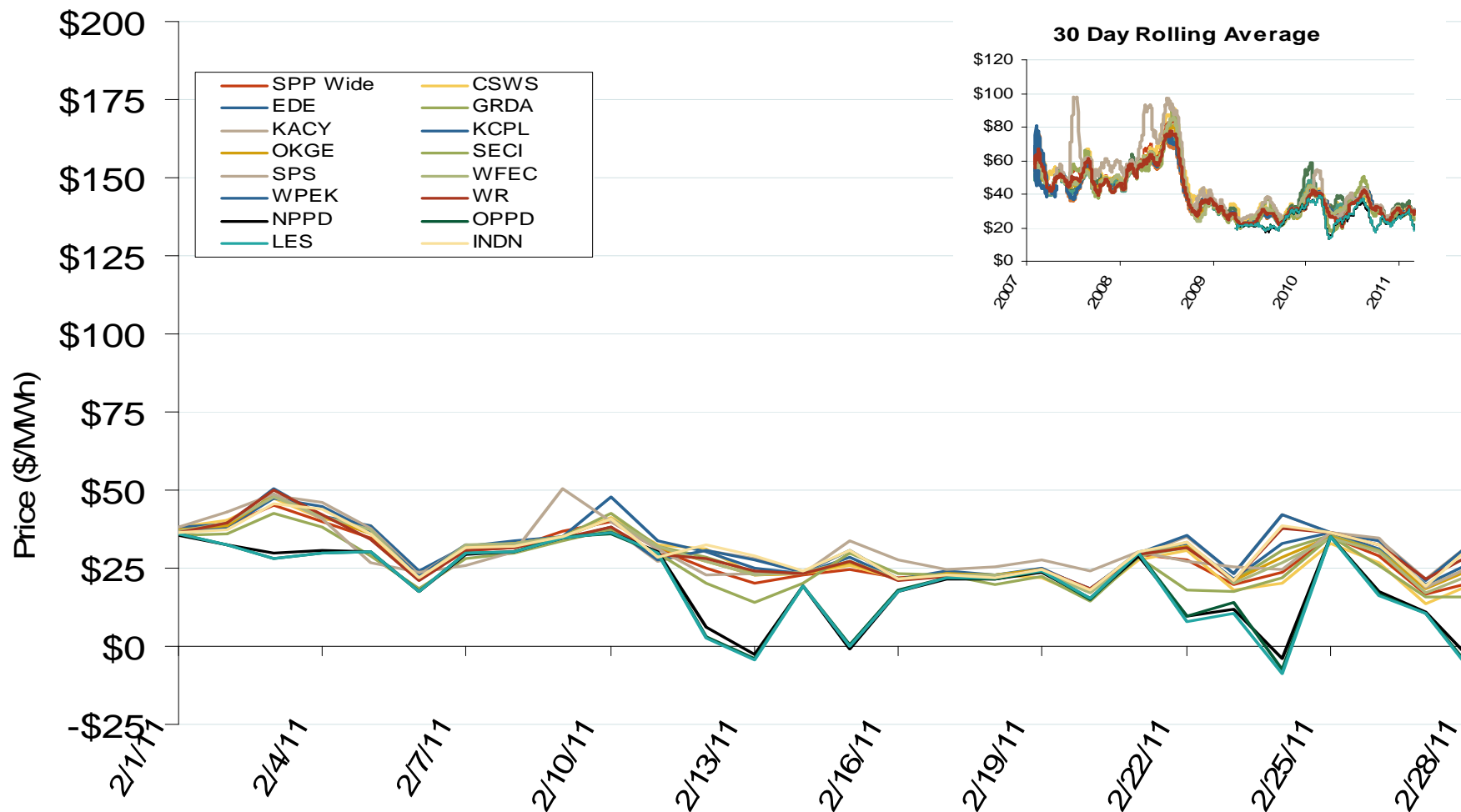
SPP 2009 Average Monthly Locational Imbalance Price (LIP)													
	Jan	Feb	Mar	Apr	May	Jun	Jul	Aug	Sep	Oct	Nov	Dec	2009 Avg
LIP (\$/MWh)	32.5	24.9	27.4	22.2	23.7	25.8	27.8	25.7	23.3	29.9	28.3	37.9	27.44

### Contact Information

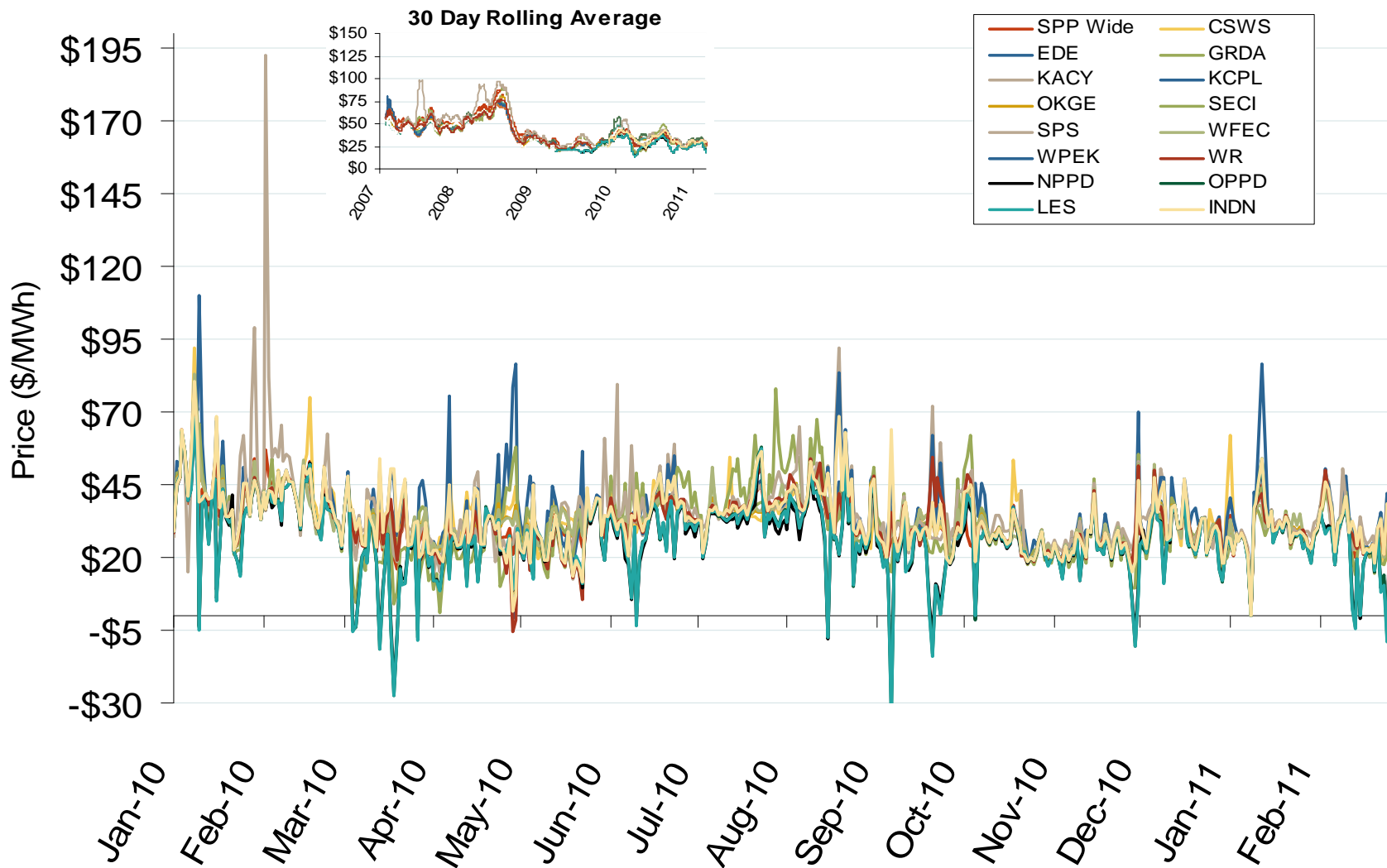
For specific issues regarding the Midwest Natural Gas Region please contact one of the following Analysts:

Laura Vallance – [Laura.Vallance@ferc.gov](mailto:Laura.Vallance@ferc.gov)

## Daily Average of SPP Real Time Prices - All Hours



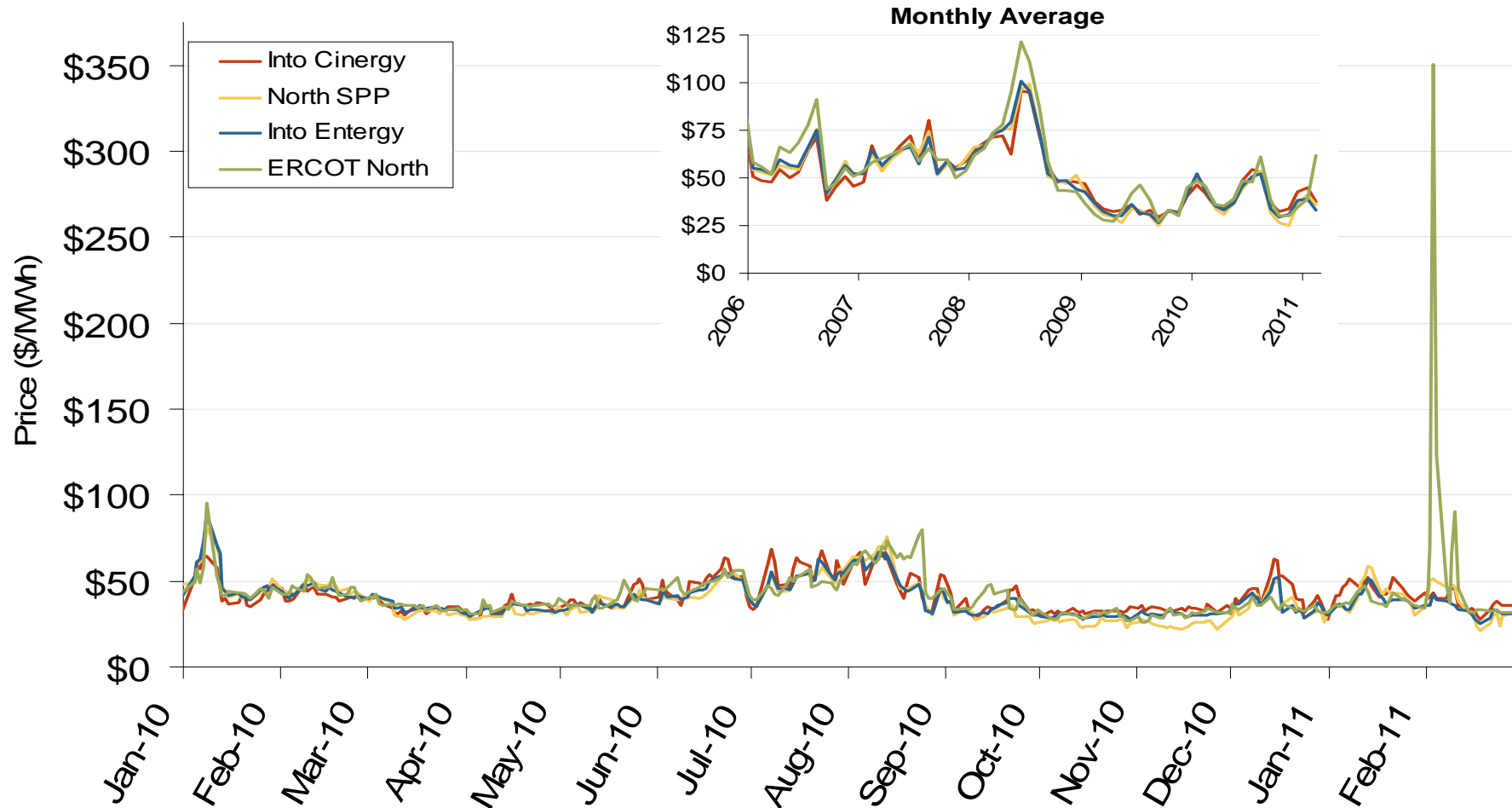
# Daily Average of SPP Real Time Prices - All Hours



Source: Derived from SPP data.

Updated: March 08, 2011

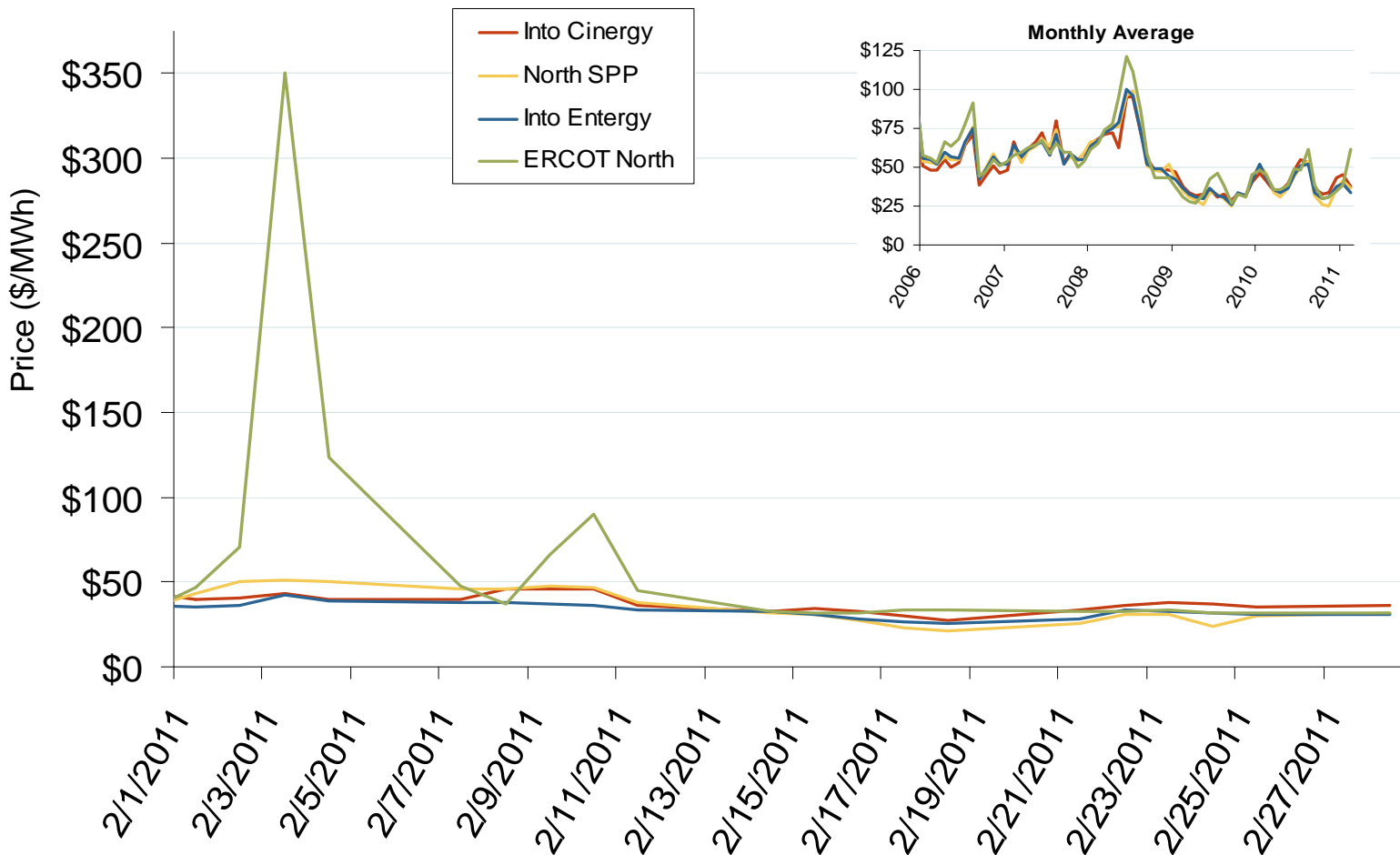
# Central Daily Bilateral Day-Ahead On-Peak Prices



Source: Derived from *Platts* data.

Updated: March 08, 2011

# Central Daily Bilateral Day-Ahead On-Peak Prices

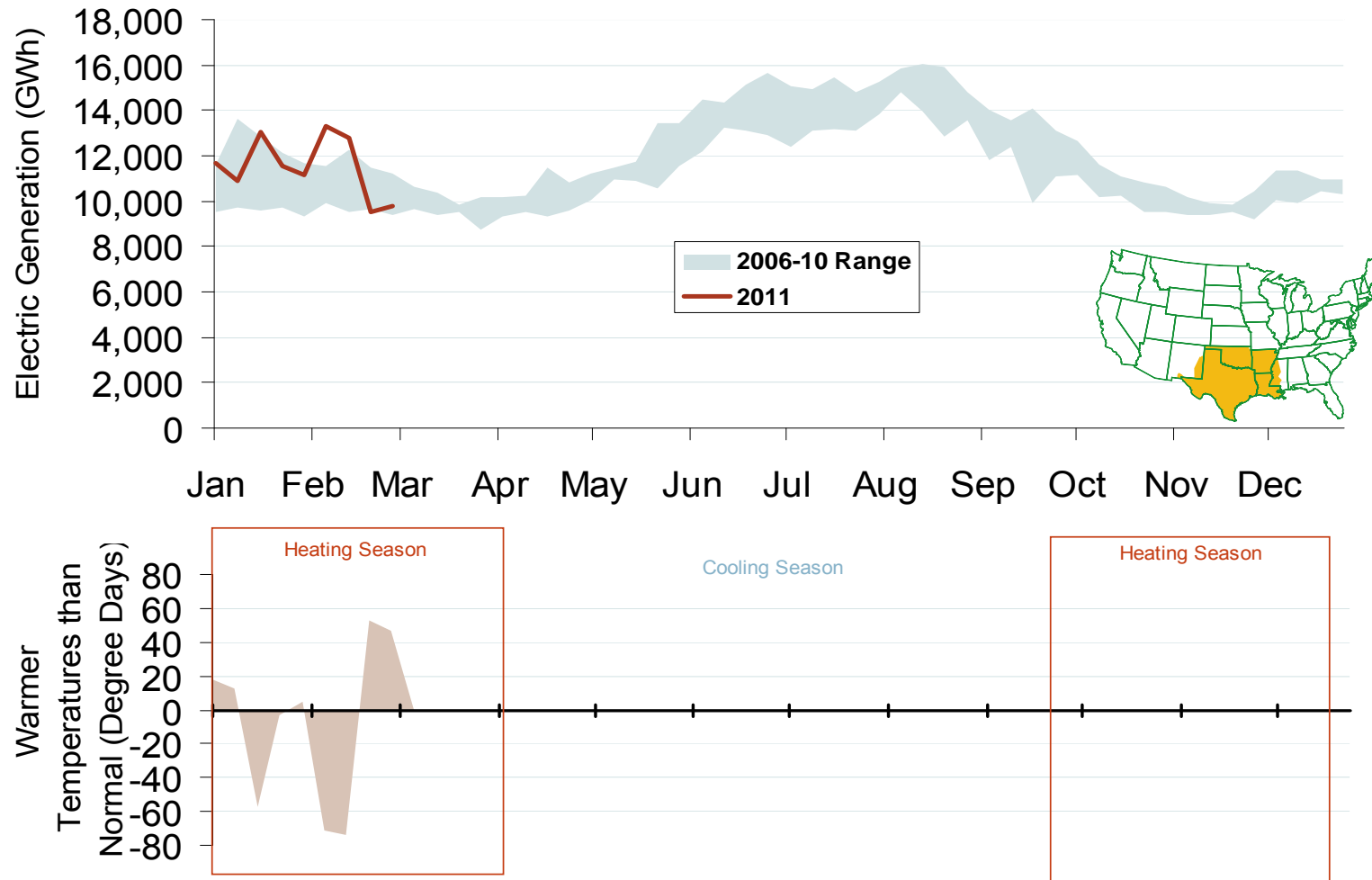


Source: Derived from *Platts* data.

Updated: March 08, 2011



# Weekly Electric Generation Output and Temperatures South Central Region



Source: Derived from *EEl* and *NOAA* data.

Updated: March 17, 2011