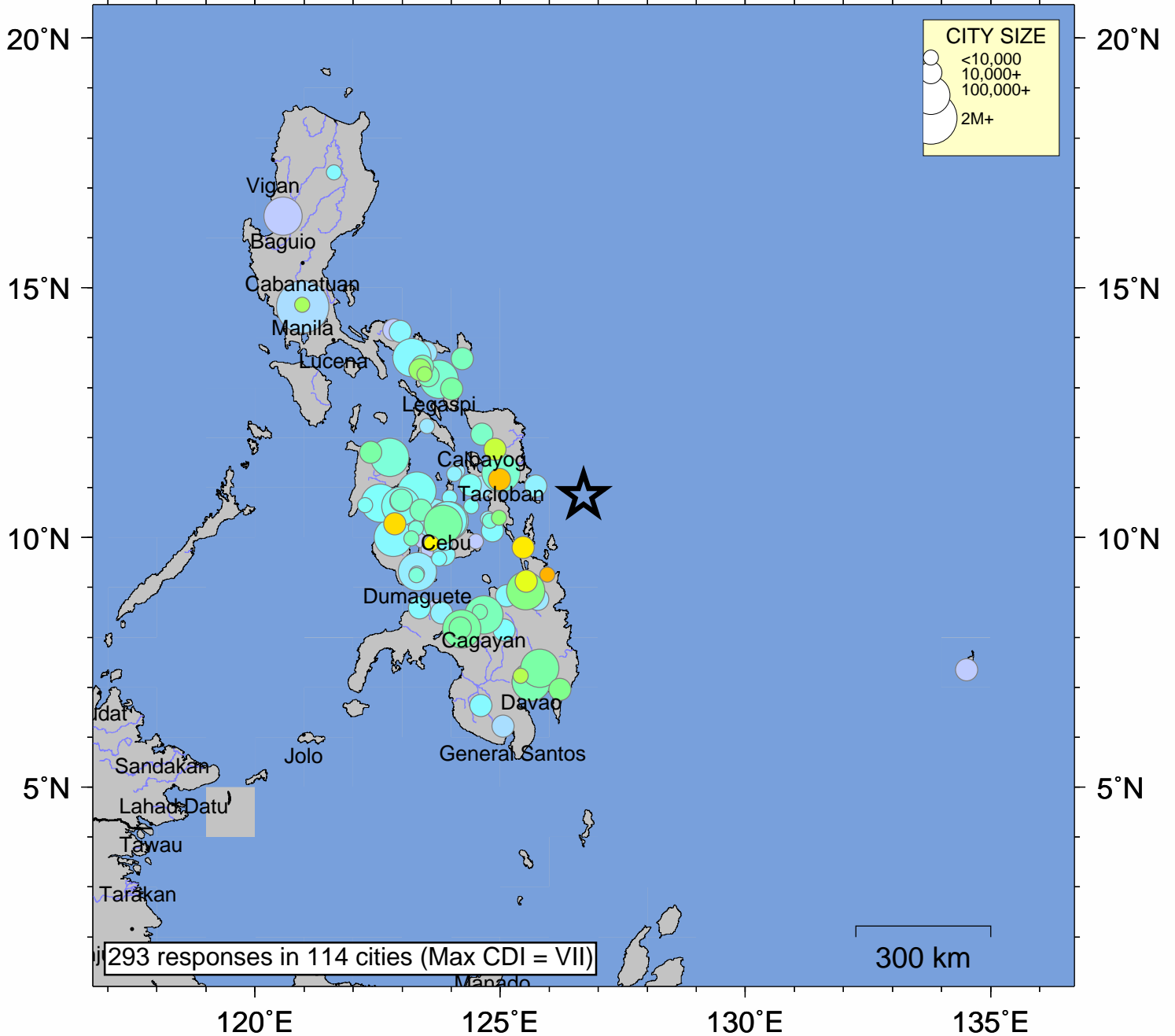


USGS Community Internet Intensity Map PHILIPPINE ISLANDS REGION

Aug 31 2012 08:47:34 PM local 10.8385N 126.7037E M7.6 Depth: 34 km ID:usc000cc5m



INTENSITY	I	II-III	IV	V	VI	VII	VIII	IX	X+
SHAKING	Not felt	Weak	Light	Moderate	Strong	Very strong	Severe	Violent	Extreme
DAMAGE	none	none	none	Very light	Light	Moderate	Moderate/Heavy	Heavy	V. Heavy

Processed: Fri Sep 14 23:55:07 2012