



ISSN: 1949-1964

Released September 14, 2012, by the National Agricultural Statistics Service (NASS), Agricultural Statistics Board, United States Department of Agriculture (USDA).

Eggs in Incubators on September 1 Down 6 Percent from Last Year

Turkey eggs in incubators on September 1, 2012, in the United States totaled 26.3 million, down 6 percent from September 1, 2011. Eggs in incubators were down 9 percent from the August 1, 2012 total of 28.9 million eggs.

Poults Hatched During August Down Slightly from Last Year

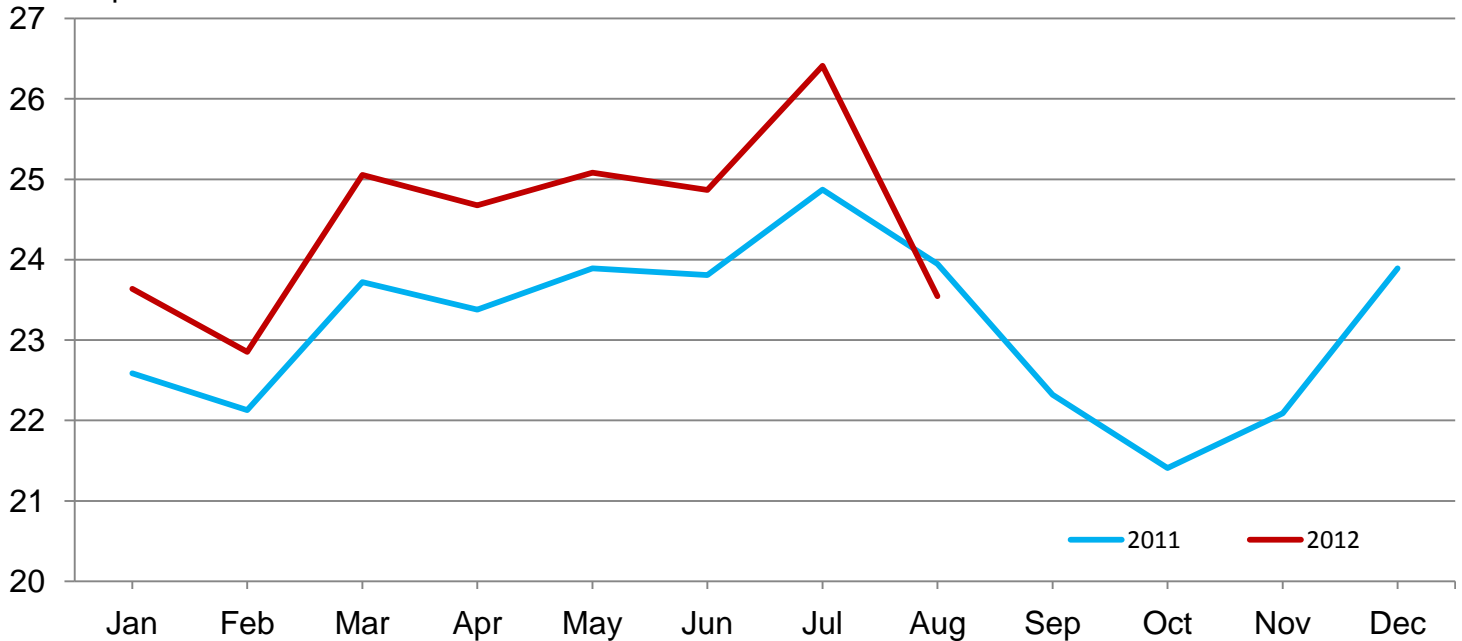
Turkey poults hatched during August 2012, in the United States totaled 23.8 million, down slightly from August 2011. Poults hatched were down 9 percent from the July 2012 total of 26.2 million poults.

Net Poults Placed During August Down 2 Percent from Last Year

The 23.5 million net poults placed during August 2012 in the United States were down 2 percent from the number placed during the same month a year earlier. Net placements were down 11 percent from the July 2012 total of 26.4 million.

Net Poults Placements – United States

Million poults



Eggs in Incubators and Poults Hatched by Month – United States: 2010-2013

[Blank data cells indicate estimation period has not yet begun]

Month	Eggs in incubators first of month		Percent of previous year	Poults hatched entire month		Percent of previous year
	2011-2012	2012-2013		2010-2011	2011-2012	
	(1,000 eggs)	(1,000 eggs)	(percent)	(1,000 poults)	(1,000 poults)	(percent)
September	28,072	26,305	94	22,065	23,157	105
October	27,170			22,085	22,423	102
November	27,502			23,783	22,734	96
December	28,741			23,519	24,812	105
January	28,308			23,973	24,463	102
February	28,044			23,079	23,191	100
March	29,039			24,340	25,234	104
April	28,231			23,735	24,291	102
May	29,648			24,082	25,483	106
June	30,385			23,812	25,021	105
July	29,758			24,766	26,199	106
August	28,891			23,887	23,826	100

Net Poultry Placements by Month – United States: 2010-2012

[Includes imports and excludes exports.]

Month	Total all breeds		Percent of previous year	Cumulative total		Percent of previous year
	2010-2011	2011-2012		2010-2011	2011-2012	
	(1,000 poults)	(1,000 poults)	(percent)	(1,000 poults)	(1,000 poults)	(percent)
September	21,670	22,320	103	21,670	22,320	103
October	21,212	21,407	101	42,882	43,727	102
November	22,599	22,090	98	65,481	65,817	101
December	22,596	23,893	106	88,077	89,710	102
January	22,585	23,636	105	110,662	113,346	102
February	22,130	22,855	103	132,792	136,201	103
March	23,721	25,055	106	156,513	161,256	103
April	23,378	24,675	106	179,891	185,931	103
May	23,893	25,082	105	203,784	211,013	104
June	23,810	24,868	104	227,594	235,881	104
July	24,872	26,410	106	252,466	262,291	104
August	23,946	23,545	98	276,412	285,836	103

Statistical Methodology

Survey Procedures: Data for turkey hatchery estimates are collected from all known turkey hatcheries. Individual NASS field offices maintain a list of all known turkey hatcheries and use known sources of hatcheries to update their lists. Approximately 40 hatcheries are contacted each month. All known turkey hatcheries hatching 15,000 or more poults annually are mailed a questionnaire as close to the first of the month as possible. Adequate time is given to respond via mail, fax, or electronic data reporting (EDR). Those that do not respond are contacted by phone. Care is exercised to ensure that all hatcheries are accounted for in the estimate.

Estimating Procedures: Sound statistical methodology is employed to derive the estimates from reported data. All data are analyzed for unusual values. Data from each operation are compared to their own past operating profile and to trends from similar operations. Data for missing operations were estimated based on similar operations or historical data. NASS field offices prepare these estimates by using a combination of survey indications and historic trends. Individual State estimates are reviewed by the Agricultural Statistics Board for reasonableness. Individual hatchery data are summed to State, regional, and United States totals. Only United States level estimates are published due to the limited number of hatcheries involved. The Net Poult Placement data include imported poults and exclude exported poults.

Cumulative net poult placements beginning on September 1 and ending on August 31 are shown in the monthly *Turkey Hatchery* report. This time period corresponds with the placements of poults which will reach maturity and be available for slaughter during the calendar year.

States reporting turkey hatcheries are: Arkansas, California, Florida, Idaho, Indiana, Iowa, Massachusetts, Michigan, Minnesota, Missouri, North Carolina, Ohio, Pennsylvania, Texas, Virginia, West Virginia, and Wisconsin.

Revision Policy: Revisions are generally the result of late or corrected data. Revisions to the previous month are published in the monthly *Turkey Hatchery* report, while annual revisions are published in the *Hatchery Production - Annual Summary* report in April.

Reliability: Turkey hatchery estimates are based on a census of all known operating hatcheries and therefore, have no sampling error. However, estimates are subject to errors such as omission, duplication, and mistakes in reporting, recording, and processing the data. While these errors cannot be measured directly, they are minimized through strict quality controls in the data collection process and a careful review of all reported data for consistency and reasonableness.

To assist in evaluating the reliability of the estimates in this report, the “Root Mean Square Error” is shown for selected items in the following table. The “Root Mean Square Error” is a statistical measure based on past performance and is computed using the differences between first and final estimates. The “Root Mean Square Error” for turkey eggs in incubators on the first day of the month over the past 24 months is 2.0 percent. This means that chances are 2 out of 3 that the final estimate will not be above or below the current estimate of 26.2 million eggs by more than 2.0 percent. Chances are 9 out of 10 that the difference will not exceed 3.5 percent.

Reliability of September Turkey Hatchery Estimates

[Based on data for the past 24 months]

Item	Root mean square error	90 percent confidence level	Difference between first and latest estimate				
			Average	Smallest	Largest	Years	
						Below latest	Above latest
	(percent)	(percent)	(1,000)	(1,000)	(1,000)	(number)	(number)
Eggs in incubators	2.0	3.5	405	2	1,861	14	10
Poults hatched	0.9	1.6	130	0	672	15	7
Net poult placements	2.0	3.4	324	7	1,195	16	8

Information Contacts

Listed below are the commodity specialists in the Livestock Branch of the National Agricultural Statistics Service to contact for additional information. E-mail inquiries may be sent to nass@nass.usda.gov

Dan Kerestes, Chief, Livestock Branch	(202) 720-3570
Bruce Boess, Head, Poultry and Specialty Commodities Section	(202) 720-4447
Cody Brokmeyer – Poultry Slaughter, Turkey Hatchery, Turkeys Raised	(202) 690-3237
David Colwell – Cold Storage	(202) 720-8784
LaKeya Jones – Catfish Processing, Catfish Production, Trout Production, Census of Aquaculture, Honey, Egg Products, Mink	(202) 720-0585
Kim Linonis – Layers, Eggs	(202) 690-8632
Miste Salmon – Broiler Hatchery, Chicken Hatchery	(202) 720-3244

Access to NASS Reports

For your convenience, you may access NASS reports and products the following ways:

- All reports are available electronically, at no cost, on the NASS web site: <http://www.nass.usda.gov>
- Both national and state specific reports are available via a free e-mail subscription. To set-up this free subscription, visit <http://www.nass.usda.gov> and in the “Follow NASS” box under “Receive reports by Email,” click on “National” or “State” to select the reports you would like to receive.
- Printed reports may be purchased from the National Technical Information Service (NTIS) by calling toll-free (800) 999-6779, or (703) 605-6220 if calling from outside the United States or Canada. Accepted methods of payment are Visa, MasterCard, check, or money order.

For more information on NASS surveys and reports, call the NASS Agricultural Statistics Hotline at (800) 727-9540, 7:30 a.m. to 4:00 p.m. ET, or e-mail: nass@nass.usda.gov.

The United States Department of Agriculture (USDA) prohibits discrimination in all its programs and activities on the basis of race, color, national origin, age, disability, and where applicable, sex, marital status, familial status, parental status, religion, sexual orientation, political beliefs, genetic information, reprisal, or because all or a part of an individual's income is derived from any public assistance program. (Not all prohibited bases apply to all programs.) Persons with disabilities who require alternative means for communication of program information (Braille, large print, audiotape, etc.) should contact USDA's TARGET Center at (202) 720-2600 (voice and TDD).

To file a complaint of discrimination, write to USDA, Assistant Secretary for Civil Rights, Office of the Assistant Secretary for Civil Rights, 1400 Independence Avenue, S.W., Stop 9410, Washington, DC 20250-9410, or call toll-free at (866) 632-9992 (English) or (800) 877-8339 (TDD) or (866) 377-8642 (English Federal-relay) or (800) 845-6136 (Spanish Federal-relay). USDA is an equal opportunity provider and employer.