

QUARTERLY

OCTOBER | NOVEMBER | DECEMBER | 2006

NATIONAL CAPITAL PLANNING COMMISSION

The Shape of Things to Come The Nation's Capital in 2030



Worthy of the Nation Released	4
ULI on Rail Corridor Potential	5
Commission Actions	6
NCPC Accepting E-Submissions	9
New Commission Members	11

The National Capital Planning Commission celebrates the release of the book, *Worthy of the Nation*.



NCPC Gathers Experts to Discuss Key Forces Shaping the National Capital Region

A panel of nationally renowned experts weighed in on the future of key forces shaping our capital city during a symposium hosted by the National Capital Planning Commission on December 6. “The Shape of Things to Come: The Nation’s Capital in 2030” brought together urban planners, architects, and design professionals from across the region.

The symposium, held at the National Press Club, explored the impact of security measures on the public realm, the influence of architecture in shaping our national identity, and the role of the federal government in making Washington an economically and culturally vibrant urban center.

The conference was inspired by the just-released second edition of the agency’s book *Worthy of the Nation: The Planning of Washington, D.C. from L’Enfant to the National Capital Planning Commission*. The book traces the planning history of Washington from L’Enfant’s vision for a planned capital to a 21st-century city (for more on the book’s release, see page 4).

Symposium panelists included architect George E. Hartman, founding partner of Hartman-Cox Architects; Washington development expert Robert Peck; and landscape architect Laurie Olin, celebrated designer of the Washington Monument grounds.

Security: At What Cost?

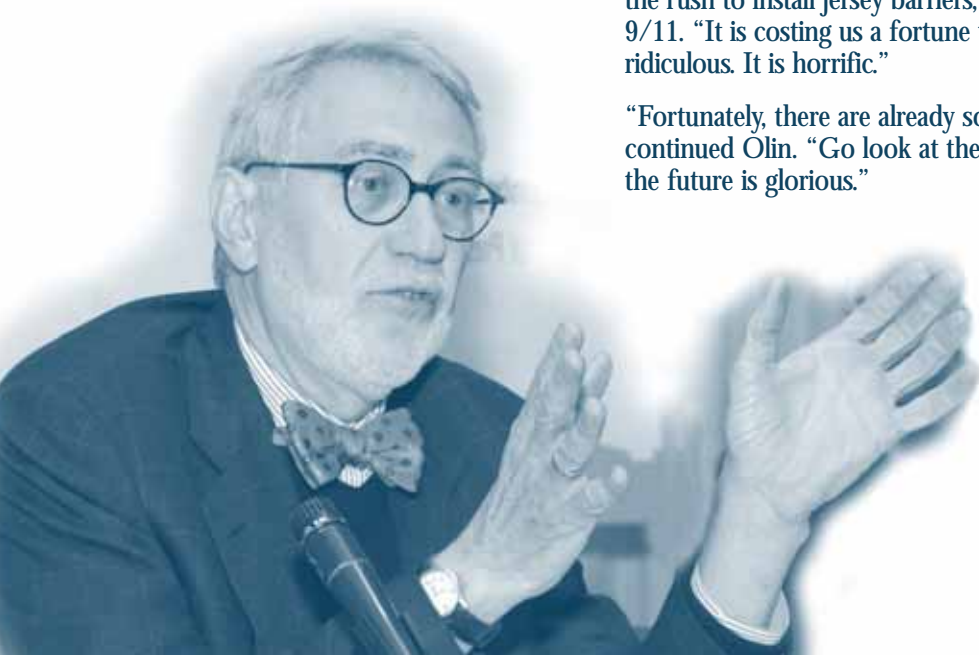
Olin, founding partner of Olin Partnership, worked closely with NCPC on the agency’s groundbreaking *National Capital Urban Design and Security Plan*. Olin expressed hope that Washington has already hit rock bottom in its overreaction to security threats.

“No other city in the world would actually do this to itself,” said Olin in describing the rush to install jersey barriers, bollards, and concrete planter plots in the wake of 9/11. “It is costing us a fortune to pour tons of concrete everywhere. It is ridiculous. It is horrific.”

“Fortunately, there are already some people who have daringly taken it all away,” continued Olin. “Go look at the Archives. It is beautiful. So it seems to me that the future is glorious.”

Some have already daringly taken [the barriers] away. Go look at the Archives. It is beautiful. So it seems to me that the future is glorious.

Laurie Olin



The Future of Architecture

Where is architecture headed in the next 30 years? George Hartman believes it will continue to play a vital role in shaping the cultural identity of the city. He is particularly encouraged by the fact that the process of approving new designs has become less ideological and politicized over time. Hartman believes future architectural developments, rather than reflecting a single grand vision, will be the consequence of case-by-case decisions that are sensitive to particular sites and situations.

“In many ways, where we are going has a lot to do with where we have come from,” said Hartman. “What is required is that the wisest and most thoughtful people, together with the country’s most talented architects, work together in this century.”

The Federal Force

A third theme of the symposium focused on the federal government as a neighbor, partner, and anchor in the National Capital Region (NCR). Robert Peck, a senior vice president at the global real estate development firm Staubach Company, addressed this issue. Peck is former president of the Greater Washington Board of Trade and a former commissioner of public buildings at the General Services Administration where he managed the government’s national real estate operations, overseeing 340 million square feet of owned and rented space.

“The NCR is unique in that we are still less subject to the employment and economic cycle that other cities are subject to,” stated Peck. “We have the most highly educated work force in the country, the area is growing rapidly, and the federal government really isn’t going anywhere,” explained Peck.

According to Peck, despite the Internet trend, the need will remain for government agencies to be located relatively close together because human beings are social people.

“I believe we will see some strategic moves,” said Peck. “Some government agencies will move to the outer suburbs, but I believe most agencies will still want to have a big presence in the District of Columbia.”



In many ways, where we are going has a lot to do with where we have come from.

George Hartman



3

The National Capital Region is unique in that we are still less subject to the employment and economic cycle that other cities are subject to.

Robert Peck



Second Edition of *Worthy of the Nation* Arrives in Bookstores

Nearly 30 years after the National Capital Planning Commission published *Worthy of the Nation*, the agency is celebrating the release of the book's second edition.

NCPC partnered with historian Dr. Antoinette Lee, photo archivist Peter Penczer, and Johns Hopkins University Press to publish *Worthy of the Nation: The Planning of Washington, D.C., from L'Enfant to the National Capital Planning Commission*.

When first released in 1977, *Worthy of the Nation* became a nationally recognized source on urban design and planning in the nation's capital. The 2006 edition traces developments from the advent of Home Rule in the 70s to the region's unprecedented growth at the turn of this century. The book includes a foreword by First Lady Laura Bush, who describes Washington as a "city filled with history but fresh with promise."

"This book has fascinating insights and anecdotes about the history of how Washington was founded," said Michael McGill, GSA's representative on the National Capital Planning Commission. McGill served on the Commission's *Worthy* review committee and also served as moderator at the agency's December planning symposium inspired by the book.

Washington has undergone a dramatic transformation in the last 30 years, and the new *Worthy* provides the latest chapter in the city's fascinating story.

Chairman John V. Cogbill, III

With more than 250 historic and contemporary photographs, maps, and illustrative site plans, *Worthy* depicts Washington's beginnings, the growth of the city during the 19th century, the role of the federal government in the region's development, and the expansion of the National Capital Region in the post-war era. The revised edition also details the end of the bicentennial era to post-9/11 security planning, how new memorials and museums have redefined the National Mall, and the remarkable revitalization of the District of Columbia's central city.

Author Dr. Antoinette Lee, who worked as research assistant on the first edition, says the Washington region is a drastically different place than it was when she worked with noted historian and author Frederick Gutheim on the original text.

"The downtown was virtually abandoned, filled with empty lots and vacant buildings and nearly devoid of people after dark," explained Lee.

In the new book, Lee describes how the introduction of the Metro system, the completion of Pennsylvania Avenue's revitalization, the arrival of immigrants, and a surge in government contracting helped change the region.

The book, released in late November, is available through Johns Hopkins University Press.

4

Author Dr. Antoinette Lee signs books at the National Press Club



NCPC: Tops in Government's Combined Federal Campaign

The National Capital Planning Commission is the first agency in the U.S. government to meet, and exceed, its goal in this year's Combined Federal Campaign (CFC). NCPC surpassed its 2006 campaign goal of \$12,000 by raising \$16,000 in donations in just over a month. Eighty-nine percent of NCPC employees participated, a five percent increase over last year. The agency also increased its donations by \$4,600.

NCPC received three awards for its efforts: *The Summit Award*, given to agencies with a 75 percent or higher participation rate; *The 100 Percent Award*, presented to agencies that reach their goal; and *The President's Award* for NCPC's support of volunteerism through the CFC.

Each year federal employees donate millions of dollars through the Combined Federal Campaign that support numerous charitable organizations. The CFC, the only authorized charitable campaign targeted to federal employees, is the biggest and most successful yearly workplace charitable campaign in the world.

Urban Land Institute Panel Studies Rail Realignment

A Fellows Advisory Panel of the Urban Land Institute (ULI) gathered at the offices of the National Capital Planning Commission for a three-day session to provide ideas on how to develop the corridor where the CSX freight railroad currently lies. The panel considered the potential for generating new economic development, creating open public spaces, and improving access to the Anacostia River if freight rail traffic were routed outside the capital city.

The conference, held from December 11 to 13, was part of the ongoing Rail Realignment Feasibility Study (RRFS) undertaken by NCPCC and the District Department of Transportation with a \$1 million grant from the Department of Homeland Security. The RRFS examines the costs and benefits of realigning the seven-mile stretch of freight rail, which runs through Washington, D.C., from Virginia to the Maryland border, carrying hazardous materials within blocks of the U.S. Capitol and through a large concentration of federal office buildings.

The antiquated rail system also cleaves Southeast and Southwest Washington from the center of the city and impedes public access to the Anacostia River waterfront. A new rail alignment would help resolve security concerns, create open space and new opportunities for recreation, and reconnect the southern half of the nation's capital to the rest of the city, as envisioned in NCPCC's 1997 long-range vision plan *Extending the Legacy*.

The panel's initial conclusions, presented at the final session of the conference, supported the overall idea for realigning the freight line. According to James DeFrancia, chair of the panel, "This undertaking has a very broad set of benefits, not all of which are easily translated into purely economic values."

More specifically, the panelists:

- Endorsed the idea of building a "decked" roadway over a two-mile segment of Maryland and Virginia Avenues that would continue to carry passenger rail traffic after the removal of the freight line. A decked roadway would provide opportunities for infill development and create value for the surrounding federal and private office buildings.
- Identified opportunities for the creation of additional parkland, increased waterfront access, and limited residential development along the Anacostia.
- Suggested that one implementation agency oversee the project to best address the challenges of coordination and timing posed by ongoing District Department of Transportation projects in and around the freight rail corridor.

Panel Chair James DeFrancia is a real estate and development expert. Other panelists included Thomas Murphy, the former mayor of Pittsburgh and senior resident fellow of ULI; William C. Caldwell, a principal in the Washington, D.C. office of the design firm RTKL Associates, Inc.; and Tom Martens, senior associate at the consulting firm Economic Research Associates.

A final report with more detailed findings and recommendations is expected in January 2007, and the Rail Realignment Feasibility Study is scheduled to be completed by spring.



The rail study is focusing on four key segments of the city.

December

December 7, 2006

The Mountain of Despair will serve as an entry to the MLK Memorial.



REVISED DESIGN APPROVED FOR MARTIN LUTHER KING, JR. MEMORIAL

In a unanimous move, members of the National Capital Planning Commission commented favorably on a revised design concept for the Martin Luther King, Jr. Memorial. The memorial will be located in West Potomac Park on the northwestern side of the Tidal Basin on the National Mall. The National Park Service, on behalf of the Martin Luther King, Jr. National Memorial Project Foundation, submitted three changes to the concept design that the Commission had previously approved in December 2005.

The memorial's Mountain of Despair, a large stone about 30 feet high that is split in two and serves as an entry to the memorial, is now flanked by one-level cascading waterfalls on the interior side of the memorial. The waterfalls flow behind the Mountain of Despair and accentuate it. The applicant also removed a planned retaining wall along the entry plaza to the Mountain of Despair and replaced it with landscaping to provide a more natural setting. The third change affects the memorial's Stone of Hope, a relief sculpture of Dr. King. It will be set approximately 20 feet closer to the entrance of the memorial to strengthen the relationship between the Stone of Hope and the Mountain of Despair.

6

SITE BOUNDARIES ADJUSTED IN AMERICAN VETERANS DISABLED FOR LIFE MEMORIAL

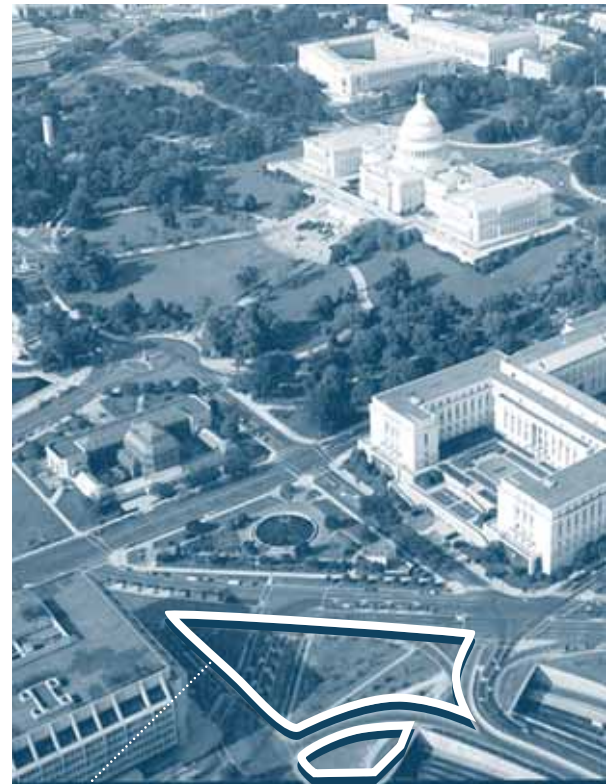
The Commission commented favorably on a revised design concept for the American Veterans Disabled for Life Memorial. The National Park Service (NPS) submitted the project on behalf of the memorial's sponsor, the Disabled Veterans' LIFE Memorial Foundation.

The revised design concept retains the major elements of the initial concept: a star fountain with flame, triangular reflecting pool, marble and etched glass walls, trees, sculptures, landscaping, and lighting. The new concept primarily adjusts the site boundaries and modifies adjacent streets and intersections; it also further develops the landscaping, lighting, and sculptural elements.

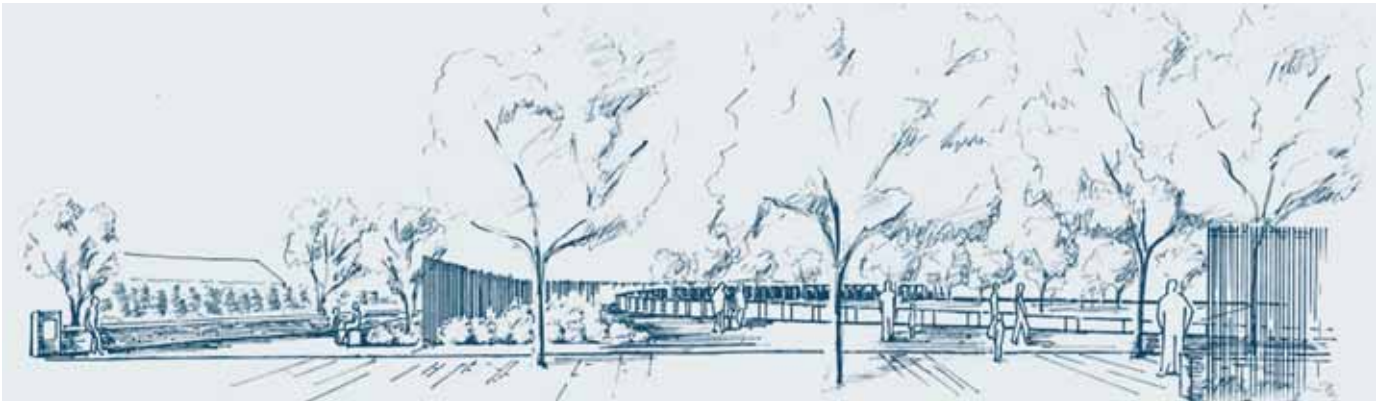
In approving the changes to the concept design, the Commission commended the NPS and the design team for improving the overall design and functionality of the memorial while addressing unanticipated site modifications from the Architect of the Capitol and the U.S. Capitol Police.

When the NPS returns to NCPC for preliminary review, it is to provide details on the water elements and accommodations and seating for the disabled, more fully developed streetscape designs, and the findings of a Site/Civil and Traffic Engineering study that is currently under development.

The Commission also noted that the Architect of the Capitol requests that the NPS further study traffic impacts and site lighting and provide more information on site maintenance.



Site boundaries of the future American Veterans Disabled for Life Memorial at Washington Avenue and Second Street, SW



The Pentagon Memorial will occupy nearly three acres of land owned by the Department of Defense.

NCPC GRANTS FINAL APPROVAL FOR PENTAGON MEMORIAL TO THE VICTIMS OF SEPTEMBER 11

The Commission approved preliminary and final site development plans for the Pentagon Memorial commemorating the victims of September 11, 2001.

The memorial site encompasses 2.91 acres and includes a memorial park and gateway. The site sits roughly 165 feet west of the face of the Pentagon, bound by Interstate 395 to the south and Route 27 to the west.

The design includes six primary features: memorial units, age lines, an age wall, a perimeter bench, landscaping/site material and a memorial gateway. The gateway, which had been identified in earlier submissions but not designed, will serve as an entry area for visitors. Two new features added to the memorial include lighting and a landscape buffer along a nearby access lane.

Minor modifications to the memorial park include changes in the material and fabrication of memorial units and the site paving material and layout. A new set of paths will run parallel to the age lines to provide handicapped access through the gravel for those using wheelchairs and crutches.

Previously, the Commission approved the site location for the memorial in July 2002, and the memorial's design concept in June 2003.

COMMISSION COMMENTS ON PROPOSED TEXT AMENDMENT TO DISTRICT OF COLUMBIA ZONING REGULATIONS

The Commission commented on a proposed amendment to the District of Columbia zoning regulations that would eliminate requirements for residential recreational space in commercial and mixed-use zone districts.

The Commission found that the proposed amendment could be inconsistent with the Federal and District Elements of the *Comprehensive Plan for the National Capital*. The Commission commented that the amendment could exacerbate existing gaps in the park system of the District of Columbia and said it is likely to have an adverse impact on the identified federal interests by resulting in overuse of elements of the federal park system.

Rather than repealing the provisions entirely, NCPC requested that the Zoning Commission consider reducing the required percentage of gross square footage of residential recreation space to a more realistic level.

The Commission also recommended that the Zoning Commission evaluate alternative tools and methods for achieving the residential recreational space goals of the Federal and District Elements of the *Comprehensive Plan for the National Capital*. The Commission suggested a joint analysis by the staffs of the District Office of Planning, the District Department of Parks and Recreation, the National Park Service, and NCPC following further study under "CapitalSpace," a joint initiative of these agencies that is currently underway.

The Commission also noted that related proposed changes to penthouse provisions are not inconsistent with the Comprehensive Plan and are not adverse to the identified federal interest because they still require compliance with the Height of Buildings Act of 1910, setback and area requirements, or other related codes and regulations.

MASTER PLAN ADVANCES FOR ARMY'S WATER TREATMENT BUILDING

The Commission approved a master plan modification and preliminary site and building plans for the Washington Aqueduct Water Treatment Residuals Management Building. The Washington Aqueduct, a division of the U.S. Army Corps of Engineers, operates the Dalecarlia and McMillan Water Treatment Plants in the District of Columbia.

This project involves processing and consolidating residual solid material from the Dalecarlia Water Treatment Plant and the Georgetown Reservoir in a new building at the Dalecarlia Reservoir. The project also includes associated small improvements including structures at these sites.

The Commission's review included approval of the Final Environmental Impact Statement dated September 2005 for the proposed water treatment residuals management process.



Rendering of future headquarters of United States Institute of Peace

November

November 2, 2006

8

NEW HEADQUARTERS APPROVED FOR UNITED STATES INSTITUTE OF PEACE

The Commission approved preliminary site and building plans for the U.S. Institute of Peace Headquarters (USIP) and Public Education Center at 23rd Street and Constitution Avenue, NW.

The building's design is intended to establish the headquarters as a symbolic structure that forms a gateway to the city along Constitution Avenue, NW. The building's form will be highlighted by carefully controlled light so as to not overwhelm the corridor nor adversely affect nearby memorials and significant buildings.

The Commission emphasized that the lighting treatment and luminance level of the new headquarters must defer to the Lincoln Memorial. This will be determined on-site during construction in collaboration with the National Park Service, the U.S. Commission of Fine Arts, and the District of Columbia State Historic Preservation Office. NCPC is requiring the U.S. Institute of Peace to provide additional details when it submits its project for final approval, including samples of all final project colors and materials for the building and site, detailed site landscape planting plans, and a completed Transportation Management Plan.

NATIONAL CAPITAL REGION RAIL PILOT PROJECT RECEIVES GREEN LIGHT

The Commission approved preliminary and final site and building plans for the National Capital Region Rail Pilot Project, which will use monitoring technology to establish a security perimeter for approximately eight miles of CSX rail line that runs through Washington's monumental core and near Capitol Hill.

The new security for the rail line will consist of a virtual fence and virtual gates installed at each entry point into the corridor. The system will include video surveillance of the rail lines and allow for around-the-clock monitoring of all data from multiple law enforcement command centers in Washington, D.C.

In granting approval, the Commission requested that the U.S. Department of Homeland Security remove all equipment, wires, and support poles associated with the project after they are no longer needed. In addition, the Commission recommended diligent maintenance and cleanup of the right-of-way to assist security activities.

The Commission also encouraged the Department to evaluate permanent solutions for the risks associated with transporting hazardous materials through the nation's capital. The Commission stated that this should include the possibility of rerouting the freight rail service, which NCPC is currently examining through its Railroad Realignment Feasibility Study.

WHITE OAK FEDERAL RESEARCH CENTER TO BUILD SOUTHWEST PARKING GARAGE AND LOT

The Commission approved final site and building plans for a parking garage and surface parking lot at the Food and Drug Administration (FDA) White Oak Federal Research Center in Montgomery County, Maryland. The plans include landscape design and implementation once garage construction is complete.

Due to construction timeline changes, the General Services Administration (GSA) also sought approval for a modification to its campus master plan, which NCPC approved earlier this year. At its November meeting, the Commission approved a modification to Phasing Plan IIIB of the 2006 Master Plan and Transportation Management Plan. However, the Commission required that the applicant resubmit Phasing Plan IV of the master plan before submitting any future projects.

The Commission also reiterated the following requirements that accompanied the 2006 master plan approval:

- A parking ratio of 1:1.5 must be maintained through 2011, limiting the number of employee parking spaces to 5,141, with no new parking spaces in the event of future expansion of population or buildings, except to serve the proposed on-site transit facility.
- GSA must submit an updated transportation management plan in 2008 reflecting current conditions at that time, in accordance with the policies of the Commission's Transportation Element in the *Comprehensive Plan for the National Capital*.

The Commission recommended that the FDA and GSA continue to work with Montgomery County and relevant transit agencies to increase ground transportation from the campus to Metrorail stations and consider establishing a public cross-county express bus. The Commission also reminded the applicant that it must submit to the Commission for review its designs for perimeter security projects conforming to the master plan.

CITY TO BUILD FIRST NEW PARK IN TWENTY YEARS

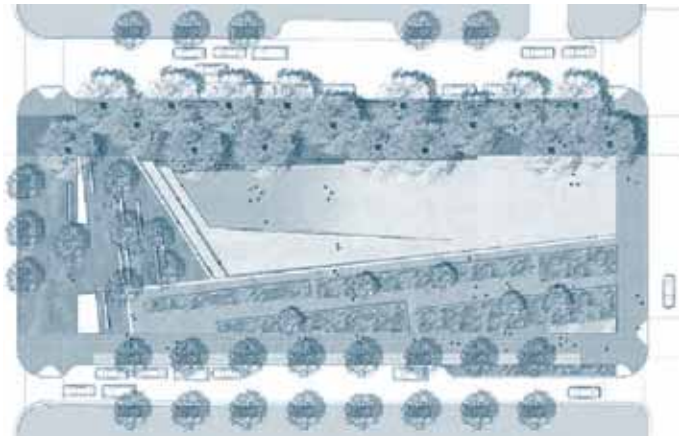
The Commission commented favorably on the design concept for Washington Canal Park, which will be the city's first new park in 20 years. The park will occupy a three-block site in Southeast Washington and will be bound by Canal, 2nd, I, and M Streets.

The park will be the first built under the Anacostia Waterfront Initiative, a partnership between the federal and District governments to transform the land along the river. Canal Park will eventually connect to a system of riverfront parks and trails, including parks at the new Department of Transportation headquarters and the Southeast Federal Center.

Scheduled to open in spring 2008, the park will be a short distance from the Nationals baseball stadium also set to open in spring 2008. The new park will feature a shallow amphitheater, horizontal jets of water, and an aquatic garden.

The Commission requested that the Anacostia Waterfront Corporation (AWC) return for preliminary approval with more details on streetscape designs, lighting, water elements, and accommodations for persons with disabilities.

The Commission also commended the AWC and its design team for integrating low-impact development strategies into the park's design, which will minimize the effects of storm water runoff from the site.



Washington Canal Park will feature an amphitheater and an aquatic garden.

NCPC Rolls Out New Electronic Submission Process

District of Columbia and federal agencies seeking Commission approval for their projects may now submit their applications electronically through the NCPC website. The easy-to-use interface allows applicants to submit their proposals more efficiently and streamlines NCPC's document management process.

After applicants register for a user ID, they are free to upload all of their documents—including drawings, renderings, spreadsheets, and text files—directly on to the NCPC server, where everyone in the agency has immediate access to them. “It's now a lot easier to find and update information on a project as it moves through the review process,” said David Levy, Senior Community Planner.

The system, which went online in August 2006, has already attracted a handful of applicants, but greater usage is expected as more agencies become aware of the opportunity to submit electronically.

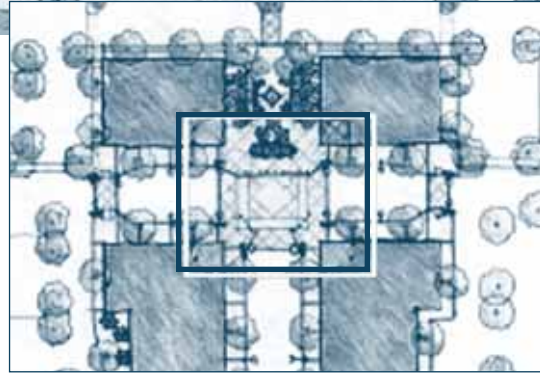


Rendering of the Washington Gateway Regional Retail Center



October

October 5, 2006



10

WASHINGTON GATEWAY REGIONAL RETAIL CENTER RECEIVES FAVORABLE RESPONSE

The Commission commented favorably on the overall design concept for the Washington Gateway Regional Retail Center in the Fort Lincoln Urban Renewal Area bounded by New York Avenue, South Dakota Avenue, 33rd Place, and Fort Lincoln Drive, NE.

The 42-acre site is owned by the U.S. Department of Housing and Urban Development (HUD) and is subject to the terms of the Fort Lincoln Urban Renewal Plan (adopted by the Commission on May 6, 1972, and re-adopted on April 5, 1990). The proposed development would include four large-scale big-box retailers and a variety of smaller, independent retailers and service providers. The total planned development includes 424,000 gross square feet of retail space and approximately 2,200 surface parking spaces.

To ensure conformance with the Fort Lincoln Urban Renewal Plan, the Commission required the National Capital Revitalization Corporation to include the following with its preliminary design submission:

- More fully developed pedestrian connections to adjacent housing areas and Anacostia Park through crosswalks, site lighting, and landscaping at major intersections along Fort Lincoln Drive and 33rd Place.

- More extensive fenestration, surface treatments, or landscaping to minimize the effects of blank façade areas of both large-scale retail stores and buildings fronting on to Fort Lincoln Drive.
- Detailed landscape designs and lighting alternatives that minimize visual impacts to adjacent streets and residential development as well as enhance views and vistas to/from/within the site.
- A parking and circulation plan showing trees, shrubs, and other landscape elements that reduce adverse visual impacts and may aid in minimizing storm water runoff.
- An Environmental Assessment (EA) or Environmental Impact Statement (EIS) in compliance with the National Environmental Policy Act (NEPA) and NCPC's Environmental and Historic Preservation Policies and Procedures.
- Low-impact design strategies to minimize the effects of storm water runoff on Anacostia Park and the Anacostia River from expansive roofing and paved surfaces.
- Screening methods to minimize visual effects of rooftop mechanical equipment.

Commission Notes

COMMISSION TO WELCOME NEW AND RETURNING MEMBERS

President Bush has announced that he plans to reappoint John V. Cogbill, III, to a new six-year term as Chairman of the National Capital Planning Commission, beginning January 1, 2007. Cogbill, a real estate and land use attorney in Richmond, Virginia, started his first term in June 2001.

As a result of the November elections, a change of leadership in both houses of the U.S. Congress will bring two new members to the Commission in January. **Senator Joseph I. Lieberman** will replace Senator Susan M. Collins as Chairman of the Homeland Security and Governmental Affairs Committee and **Representative Henry Waxman** will replace Representative Tom Davis as Chairman of the House Government Reform Committee.

INTERNATIONAL OUTREACH

NCPC staff met with numerous foreign delegations during the last three months, both in Washington and abroad. In November, NCPC Executive Director **Patti Gallagher** traveled to **Zhenjiang in China's Jiangsu Province** with an international team of planners assembled by the American Planning Association (APA). The group worked with city staff in developing a regional strategic plan and evaluated important development issues and opportunities with city cabinet representatives and department directors.

In October a nine-member delegation of governmental officials from China's **Jiangsu Province** visited NCPC to learn about its current initiatives. In December more than 30 mayors from the same province came to NCPC as part of a five-city APA-sponsored trip. NCPC staff briefed the groups on NCPC's mission and planning initiatives. The mayors were particularly interested in the diversity of the Commission's membership and its coordination with local governments.

In October Executive Director **Patti Gallagher** and Public Affairs Director **Lisa MacSpadden** traveled to **Ottawa, Canada** to meet with senior officials at the National Capital Commission (NCC), the Canadian capital's planning agency. The NCPC representatives briefed a panel review board appointed by Canada's Minister of Transport, Infrastructure and Communities, which is reviewing the role of the NCC and considering whether NCC meetings should become public. The NCPC staff emphasized how important public outreach and open public meetings are to the Commission's mission. The Executive Director also briefed Canada's Advisory Committee on Planning, Design and Realty on NCPC's work.

In October, NCPC Commissioner **Mike McGill**, Deputy Executive Director **Marcel Acosta**, Plan and Project Implementation Director **Bill Dowd**, and OPA Director **Lisa MacSpadden** met with Warren Conrad from **Pretoria, South Africa**. Mr. Conrad is with a project consultancy working to revitalize the South African capital and improve the efficiency of their federal government.

Deputy Executive Director **Marcel Acosta** and **Julia Koster**, Planning Research and Policy Division Director met with two **South Korean** representatives interested in learning about NCPC's role in planning for the nation's capital. South Korea recently decided to move its federal administrative branches to a new city to be built 100-miles south of Seoul. The South Koreans are traveling to several capital cities to inform the planning of their new city.

STAFF ANNOUNCEMENTS

NCPC's Historic Preservation Officer **Nancy Witherell** participated in the Preserve America summit held in New Orleans in October. Preserve America is the historic preservation initiative chaired by First Lady Laura Bush and administered by the Advisory Council on Historic Preservation. This year's summit celebrated the 40th anniversary of the National Historic Preservation Act and focused on the future of the national historic preservation program. Ms. Witherell served on a working panel of experts that proposed recommendations for addressing security needs while protecting historic buildings and settings.

Congratulations to NCPC Architect/Urban Planner **Jonathan McIntyre** who passed the American Institute of Certified Planners (AICP) exam in November. A licensed architect, Mr. McIntyre joins the ranks of staff who are both licensed architects and certified planners.

Steve Dunakoskie joined NCPC's Plan and Project Implementation Division in October as Senior Architect/Urban Designer. Mr. Dunakoskie previously served as a Senior Project Manager with the Transportation Security Administration's (TSA) Real Estate Division where he headed the Missions Support Program. Mr. Dunakoskie is a licensed architect who worked as an Architect/Engineer with the United States Postal Service and in private practice. He has a master's degree in Project Management from the University of Wisconsin, a Bachelor of Architecture from the University of Texas-Austin, and is a member of the American Institute of Architects.

Denise V. Powers joined NCPC's Office of Public Affairs in October. Ms. Powers is a Senior Writer/Editor with more than 15 years of experience writing for a wide variety of audiences. Before joining NCPC, Ms. Powers worked as a freelance writer and copy editor and had numerous articles and reports published. Previously she was Assistant Professor of Political Science at the University of Iowa and also has experience in retail site location, litigation consulting, and healthcare. Ms. Powers has a Ph.D. and M.A. in Political Science from the University of North Carolina-Chapel Hill and a B.S. in Finance from the University of Illinois.



QUARTERLY

NATIONAL CAPITAL PLANNING COMMISSION
401 9TH STREET, NW, NORTH LOBBY, SUITE 500
WASHINGTON, D.C. 20004

What's Ahead at NCPC

JANUARY

- Jan. 4 -** Commission Meeting
- Jan. 9 -** National Capital Framework Plan Public Meeting
5:30 - 7:30 pm at NCPC; RSVP: Frameworkplan@ncpc.gov
For more info, visit Planning Initiatives at www.ncpc.gov
- Jan. 12 -** CityVision, 6:00 - 8:00 p.m. at the National Building Museum (NBM)
Local students, guided by NCPC and NBM staff, plan memorials for key sites in the District as part of the museum's CityVision Outreach Program. Students will present their concepts; the public is welcome.

COMING UP

- April 9-29** Worthy of the Nation Exhibit in the West Hall of Union Station.

Commission Members

- John V. Cogbill, III, Chairman, Presidential Appointee
Herbert F. Ames, Presidential Appointee
José L. Galvez, III, Presidential Appointee
Arrington Dixon, Mayoral Appointee
Patricia Elwood, Vice Chair, Mayoral Appointee
The Honorable Donald H. Rumsfeld
Secretary of Defense
The Honorable Dirk Kempthorne
Secretary of the Interior
The Honorable Lurita Alexis Doan
Administrator of General Services
The Honorable Susan M. Collins
Chairman, Senate Committee on Governmental Affairs
The Honorable Tom Davis
Chairman, House Committee on Government Reform
The Honorable Anthony A. Williams
Mayor of the District of Columbia
The Honorable Linda W. Cropp
Chairman, Council of the District of Columbia

Executive Director
Patricia E. Gallagher, AICP



The National Capital Planning Commission is the federal government's planning agency in the District of Columbia and surrounding counties in Maryland and Virginia. The Commission provides overall planning guidance for federal land and buildings in the region. It also reviews the design of federal construction projects, oversees long-range planning for future development, and monitors capital investment by federal agencies.

National Capital Planning Commission
401 9th Street, NW
North Lobby, Suite 500
Washington, D.C. 20004
Telephone 202.482.7200
Fax 202.482.7272
www.ncpc.gov