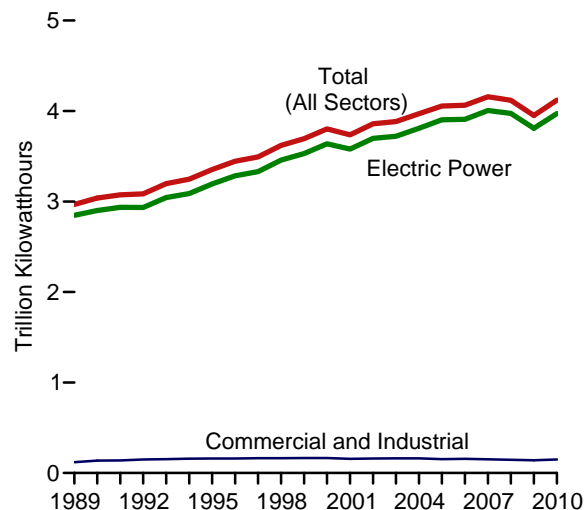
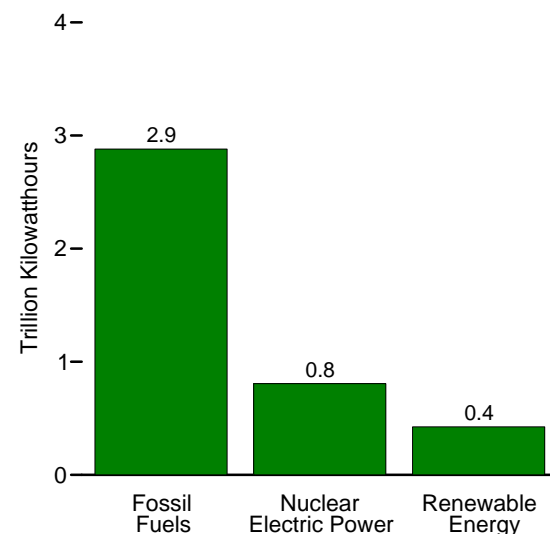


Figure 8.2a Electricity Net Generation, Total (All Sectors)

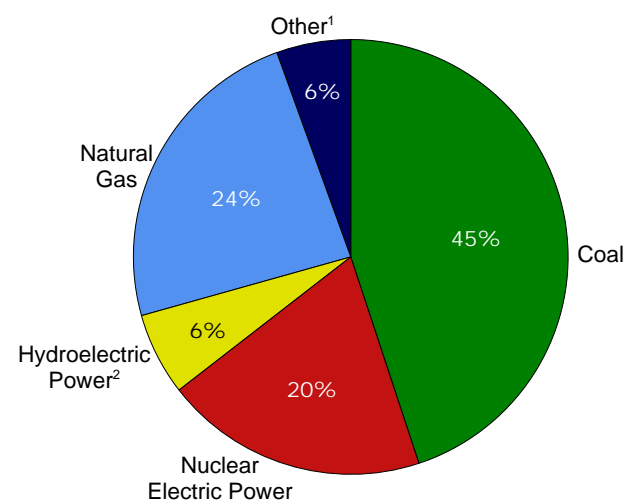
By Sector, 1989-2010



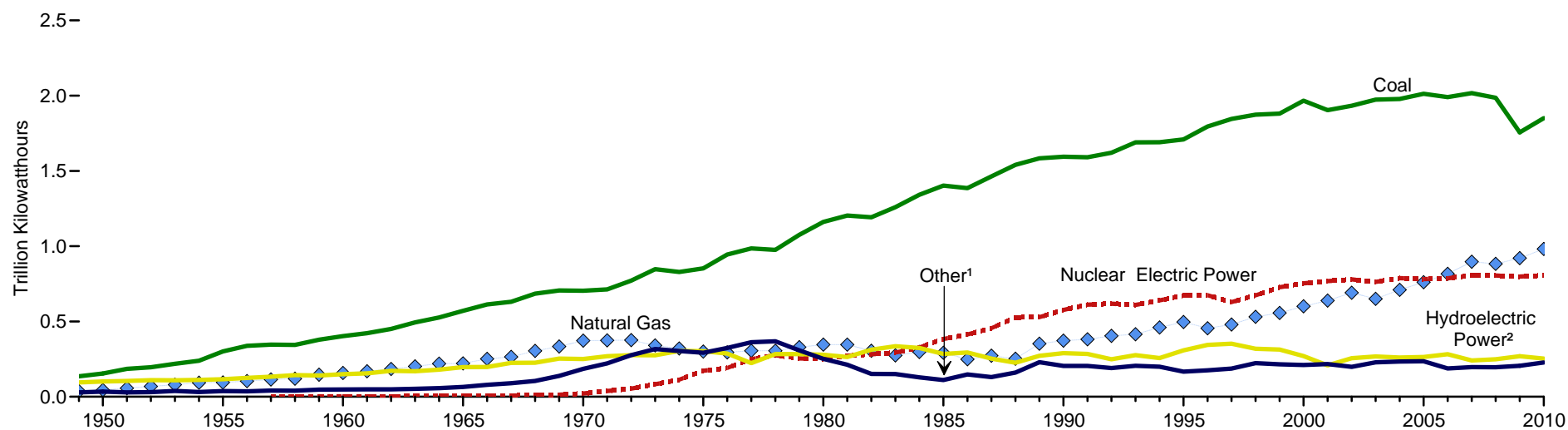
By Source Category, 2010



By Source, 2010



By Source, 1949-2010



¹ Wind, petroleum, wood, waste, geothermal, other gases, solar thermal and photovoltaic, batteries, chemicals, hydrogen, pitch, purchased steam, sulfur, miscellaneous technologies, and non-renewable waste (municipal solid waste from non-biogenic sources, and tire-derived fuels).

² Conventional hydroelectric power and pumped storage.
 Note: Sum of components may not equal 100 percent due to independent rounding.
 Sources: Tables 8.2a, 8.2b, and 8.2d.