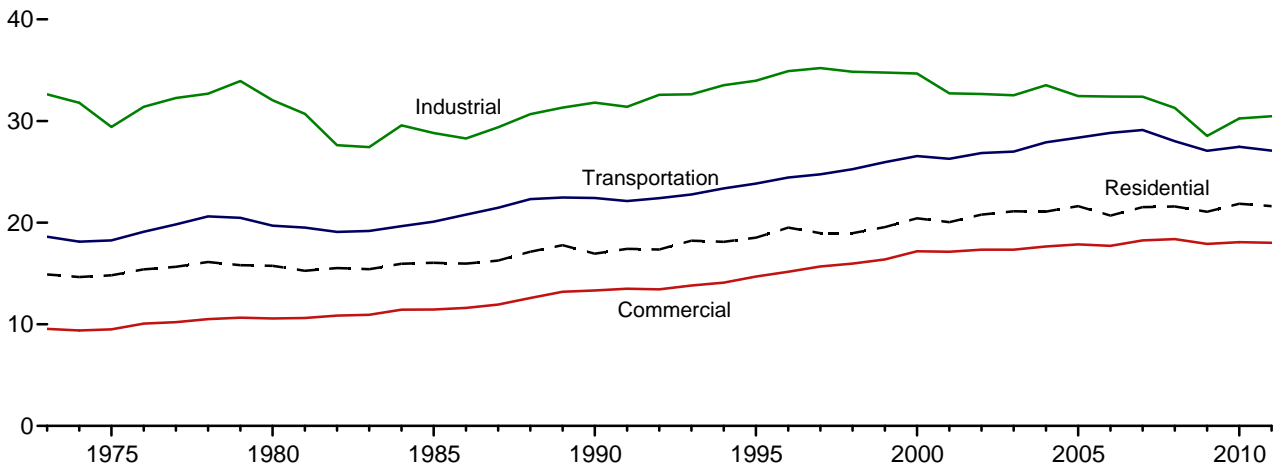


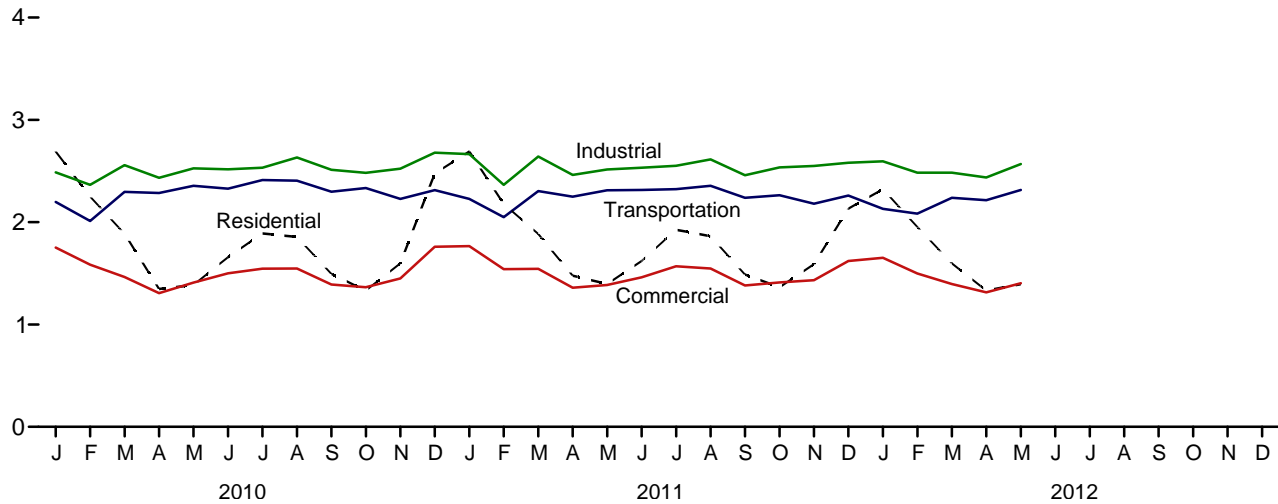
2. Energy Consumption by Sector

Figure 2.1 Energy Consumption by Sector
(Quadrillion Btu)

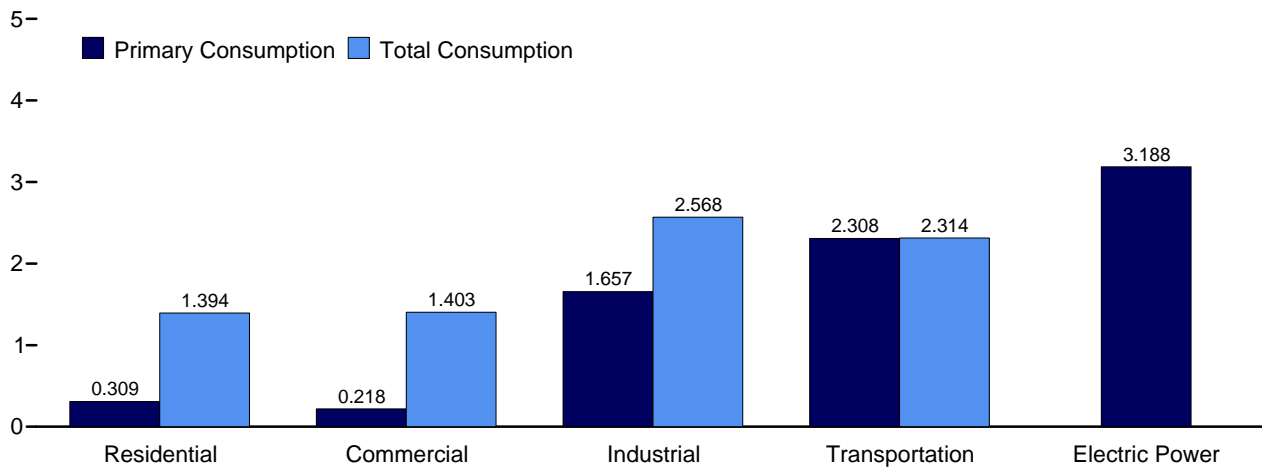
Total Consumption by End-Use Sector, 1973-2011



Total Consumption by End-Use Sector, Monthly



By Sector, May 2012



Web Page: <http://www.eia.gov/totalenergy/data/monthly/#consumption>.
Source: Table 2.1.

Table 2.1 Energy Consumption by Sector
(Trillion Btu)

	End-Use Sectors								Electric Power Sector ^{c,d}	Balancing Item ^g	Primary Total ^h
	Residential		Commercial ^a		Industrial ^b		Transportation				
	Primary ^e	Total ^f	Primary ^e	Total ^f	Primary ^e	Total ^f	Primary ^e	Total ^f			
1973 Total	8,225	14,897	4,423	9,543	24,720	32,623	18,577	18,613	19,731	7	75,684
1975 Total	7,990	14,813	4,059	9,492	21,434	29,413	18,210	18,245	20,270	1	71,965
1980 Total	7,439	15,753	4,105	10,578	22,595	32,039	19,659	19,697	24,269	-1	78,067
1985 Total	7,148	16,041	3,732	11,451	19,443	28,816	20,041	20,088	26,032	-4	76,392
1990 Total	6,557	16,945	3,896	13,320	21,180	31,810	22,366	22,420	30,495	-9	84,485
1995 Total	6,936	18,519	4,101	14,690	22,719	33,971	23,791	23,846	33,479	3	91,029
1996 Total	7,467	19,504	4,273	15,172	23,410	34,904	24,383	24,437	34,485	4	94,022
1997 Total	7,033	18,965	4,295	15,681	23,686	35,200	24,695	24,750	34,886	6	94,602
1998 Total	6,413	18,955	4,005	15,968	23,177	34,843	25,201	25,256	36,225	-3	95,018
1999 Total	6,775	19,557	4,053	16,376	22,950	34,764	25,891	25,949	36,976	6	96,652
2000 Total	7,159	20,425	4,278	17,175	22,824	34,664	26,489	26,548	38,062	2	98,814
2001 Total	6,868	20,042	4,084	17,137	21,794	32,720	26,213	26,275	37,215	-6	96,168
2002 Total	6,912	20,791	4,132	17,345	21,799	32,662	26,781	26,842	38,016	5	97,645
2003 Total	7,211	21,110	4,283	17,343	21,503	32,532	26,920	26,994	38,062	-1	97,978
2004 Total	6,993	21,093	4,232	17,659	22,412	33,520	27,817	27,895	38,713	-6	100,162
2005 Total	6,909	21,626	4,051	17,857	21,411	32,446	28,272	28,353	39,638	(s)	100,282
2006 Total	6,168	20,688	3,747	17,711	21,536	32,401	28,751	28,830	39,428	(s)	99,629
2007 Total	6,598	21,531	3,922	18,255	21,370	32,394	29,029	29,117	40,377	-1	101,296
2008 Total	6,817	21,596	4,073	18,381	20,480	31,290	27,925	28,008	39,978	(s)	99,275
2009 Total	6,619	21,064	4,061	17,899	18,813	28,525	26,989	27,071	38,077	(s)	94,559
2010 January	1,142	2,691	617	1,752	1,695	2,487	2,190	2,198	3,484	4	9,132
February	985	2,250	548	1,585	1,601	2,365	2,004	2,012	3,073	1	8,213
March	737	1,887	419	1,465	1,752	2,557	2,290	2,297	3,008	-1	8,205
April	439	1,347	277	1,307	1,624	2,435	2,280	2,286	2,755	-2	7,372
May	328	1,386	226	1,410	1,612	2,527	2,349	2,356	3,163	(s)	7,678
June	268	1,659	198	1,501	1,608	2,517	2,320	2,328	3,611	2	8,008
July	240	1,889	182	1,546	1,618	2,532	2,404	2,411	3,934	4	8,383
August	232	1,855	186	1,547	1,707	2,633	2,399	2,406	3,917	4	8,445
September	237	1,494	189	1,390	1,671	2,512	2,291	2,298	3,306	(s)	7,694
October	343	1,331	256	1,364	1,644	2,482	2,327	2,333	2,942	-1	7,509
November	599	1,597	364	1,451	1,671	2,523	2,221	2,228	2,944	-1	7,797
December	1,054	2,476	579	1,761	1,802	2,679	2,307	2,314	3,488	1	9,231
Total	6,603	21,862	4,039	18,078	20,003	30,250	27,384	27,466	39,626	11	97,667
2011 January	1,174	2,692	636	1,766	1,837	2,665	2,220	2,227	3,483	1	9,351
February	953	2,179	531	1,540	1,600	2,364	2,042	2,049	3,006	-1	8,131
March	774	1,886	448	1,544	1,787	2,642	2,297	2,304	3,070	-3	8,373
April	480	1,478	298	1,359	1,622	2,462	2,242	2,249	2,905	-2	7,545
May	329	1,396	221	1,387	1,633	2,515	2,306	2,312	3,121	-1	7,609
June	261	1,621	193	1,462	1,639	2,533	2,308	2,315	3,530	1	7,932
July	239	1,925	185	1,569	1,616	2,552	2,316	2,323	4,012	5	8,373
August	250	1,863	202	1,548	1,695	2,614	2,349	2,356	3,885	3	8,384
September	263	1,488	211	1,382	1,629	2,459	2,232	2,238	3,232	-1	7,567
October	382	1,364	293	1,411	1,675	2,536	2,257	2,264	2,967	-2	7,573
November	594	1,589	367	1,434	1,699	2,549	2,175	2,181	2,919	-3	7,751
December	885	2,132	504	1,621	1,736	2,581	2,253	2,260	3,215	-3	8,592
Total	6,583	21,616	4,089	18,020	20,169	30,471	26,998	27,078	39,346	-5	97,180
2012 January	1,008	2,323	R 559	1,652	R 1,778	R 2,596	R 2,124	R 2,131	3,232	-2	R 8,699
February	848	1,954	484	1,499	R 1,687	R 2,484	2,077	R 2,084	2,924	-3	R 8,017
March	R 574	R 1,598	R 347	R 1,396	R 1,653	R 2,484	R 2,231	R 2,238	2,911	-5	R 7,710
April	R 424	R 1,332	R 280	R 1,314	R 1,612	R 2,438	R 2,209	R 2,215	2,775	-7	R 7,292
May	309	1,394	218	1,403	1,657	2,568	2,308	2,314	3,188	-4	7,675
5-Month Total	3,163	8,600	1,888	7,265	8,386	12,569	10,949	10,982	15,029	-22	39,394
2011 5-Month Total	3,709	9,630	2,134	7,596	8,480	12,648	11,107	11,141	15,585	-6	41,009
2010 5-Month Total	3,632	9,561	2,086	7,518	8,283	12,371	11,113	11,148	15,484	2	40,600

^a Commercial sector, including commercial combined-heat-and-power (CHP) and commercial electricity-only plants.

^b Industrial sector, including industrial combined-heat-and-power (CHP) and industrial electricity-only plants.

^c Electricity-only and combined-heat-and-power (CHP) plants within the NAICS 22 category whose primary business is to sell electricity, or electricity and heat, to the public.

^d Through 1988, data are for electric utilities only. Beginning in 1989, data are for electric utilities and independent power producers.

^e See "Primary Energy Consumption" in Glossary.

^f Total energy consumption in the end-use sectors consists of primary energy consumption, electricity retail sales, and electrical system energy losses. See Note 2, "Electrical System Energy Losses," at end of section.

^g A balancing item. The sum of primary consumption in the five energy-use sectors equals the sum of total consumption in the four end-use sectors. However, total energy consumption does not equal the sum of the sectoral components due to the use of sector-specific conversion factors for coal and natural gas.

^h Primary energy consumption total. See Table 1.3.

R=Revised. (s)=Less than 0.5 trillion Btu and greater than -0.5 trillion Btu.

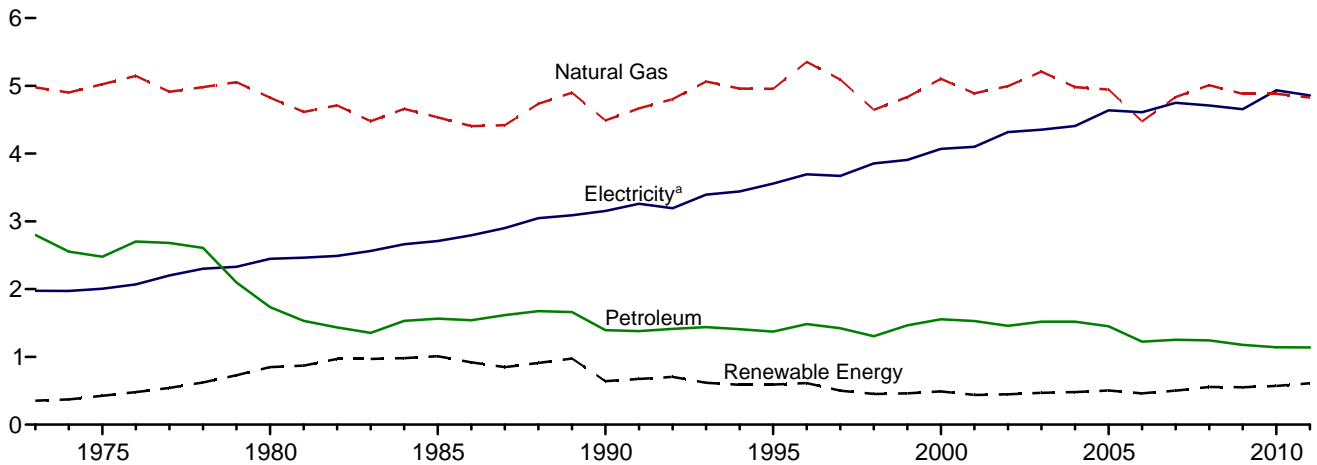
Notes: • See Note, "Classification of Power Plants Into Energy-Use Sectors," at end of Section 7. • See Note 1, "Energy Consumption Data and Surveys," at end of section. • Totals may not equal sum of components due to independent rounding. • Geographic coverage is the 50 States and the District of Columbia.

Web Page: See <http://www.eia.gov/totalenergy/data/monthly/#consumption> for all available data beginning in 1973.

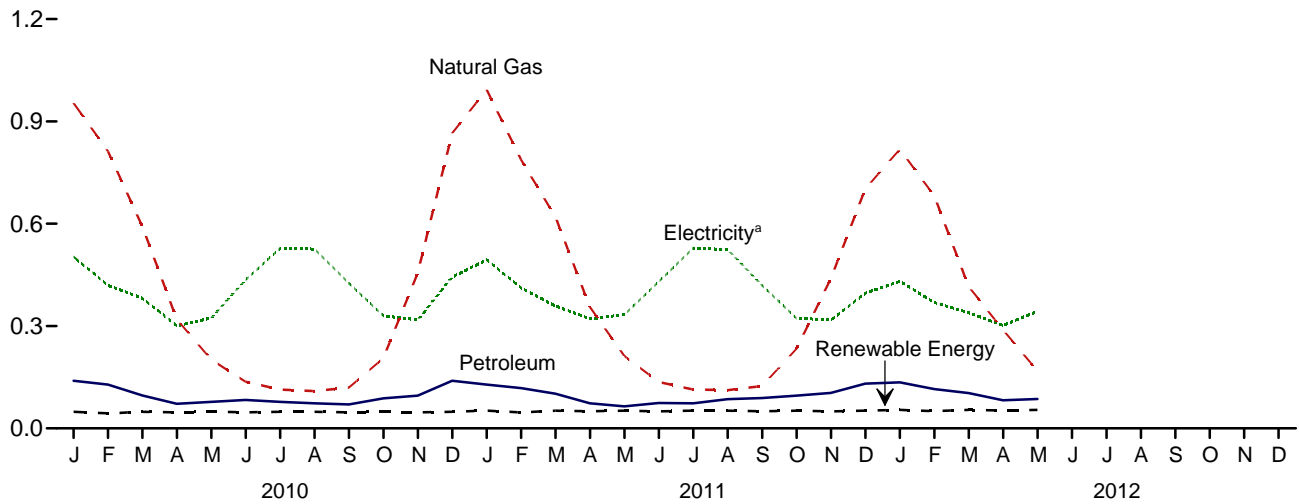
Sources: Tables 1.3 and 2.2–2.6.

Figure 2.2 Residential Sector Energy Consumption
(Quadrillion Btu)

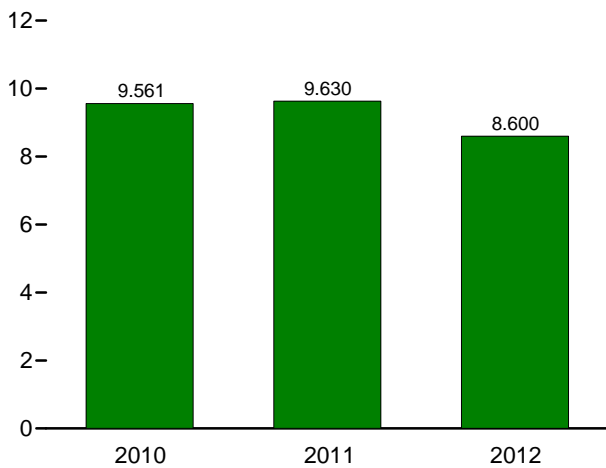
By Major Source, 1973-2011



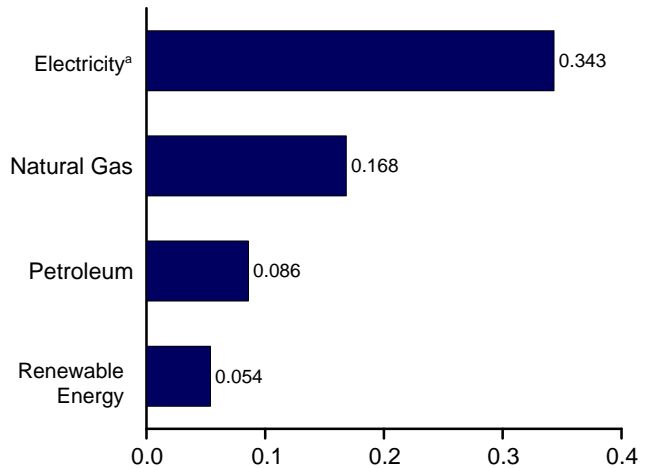
By Major Source, Monthly



Total, January-May



By Major Source, May 2012



^a Electricity retail sales.
Web Page: <http://www.eia.gov/totalenergy/data/monthly/#consumption>.
Source: Table 2.2.

Table 2.2 Residential Sector Energy Consumption
(Trillion Btu)

	Primary Consumption ^a									Electricity Retail Sales ^d	Electrical System Energy Losses ^e	Total
	Fossil Fuels				Renewable Energy ^b				Total Primary			
	Coal	Natural Gas ^c	Petroleum	Total	Geo-thermal	Solar/PV	Bio-mass	Total				
1973 Total	94	4,977	2,800	7,871	NA	NA	354	354	8,225	1,976	4,696	14,897
1975 Total	63	5,023	2,479	7,564	NA	NA	425	425	7,990	2,007	4,817	14,813
1980 Total	31	4,825	1,734	6,589	NA	NA	850	850	7,439	2,448	5,866	15,753
1985 Total	39	4,534	1,565	6,138	NA	NA	1,010	1,010	7,148	2,709	6,184	16,041
1990 Total	31	4,491	1,394	5,916	6	56	580	641	6,557	3,153	7,235	16,945
1995 Total	17	4,954	1,374	6,345	7	64	520	591	6,936	3,557	8,026	18,519
1996 Total	17	5,354	1,484	6,854	7	65	540	612	7,467	3,694	8,344	19,504
1997 Total	16	5,093	1,422	6,531	8	64	430	502	7,033	3,671	8,261	18,965
1998 Total	12	4,646	1,304	5,962	8	64	380	452	6,413	3,856	8,686	18,955
1999 Total	14	4,835	1,465	6,314	9	63	390	461	6,775	3,906	8,875	19,557
2000 Total	11	5,105	1,554	6,670	9	61	420	489	7,159	4,069	9,197	20,425
2001 Total	12	4,889	1,529	6,430	9	59	370	438	6,868	4,100	9,074	20,042
2002 Total	12	4,995	1,457	6,464	10	57	380	448	6,912	4,317	9,562	20,791
2003 Total	12	5,209	1,519	6,741	13	57	400	470	7,211	4,353	9,546	21,110
2004 Total	11	4,981	1,520	6,513	14	57	410	481	6,993	4,408	9,691	21,093
2005 Total	8	4,946	1,451	6,406	16	58	430	504	6,909	4,638	10,079	21,626
2006 Total	6	4,476	1,224	5,706	18	63	380	462	6,168	4,611	9,909	20,688
2007 Total	8	4,835	1,254	6,097	22	70	410	502	6,598	4,750	10,182	21,531
2008 Total	8	5,010	1,243	6,261	26	80	450	557	6,817	4,708	10,071	21,596
2009 Total	8	4,883	1,176	6,067	33	89	430	552	6,619	4,656	9,789	21,064
2010 January	1	953	140	1,094	3	10	36	48	1,142	503	1,045	2,691
February	1	812	128	941	3	9	32	44	985	419	846	2,250
March	1	592	96	689	3	10	36	48	737	381	768	1,887
April	(s)	320	72	392	3	9	35	47	439	300	608	1,347
May	(s)	201	78	280	3	10	36	48	328	324	734	1,386
June	1	137	83	221	3	9	35	47	268	435	956	1,659
July	1	114	78	192	3	10	36	48	240	528	1,121	1,889
August	1	109	74	183	3	10	36	48	232	526	1,098	1,855
September	(s)	120	70	190	3	9	35	47	237	425	832	1,494
October	1	206	88	294	3	10	36	48	343	330	658	1,331
November	1	456	96	552	3	9	35	47	599	318	680	1,597
December	1	865	140	1,006	3	10	36	48	1,054	444	978	2,476
Total	7	4,883	1,142	6,032	37	114	420	571	6,603	4,933	10,326	21,862
2011 January	1	993	129	1,122	3	12	37	52	1,174	494	1,023	2,692
February	1	787	118	906	3	11	33	47	953	412	814	2,179
March	1	619	102	722	3	12	37	52	774	358	754	1,886
April	(s)	356	73	430	3	12	35	50	480	321	677	1,478
May	(s)	212	64	277	3	12	37	52	329	334	733	1,396
June	(s)	136	74	211	3	12	35	50	261	430	931	1,621
July	(s)	114	73	187	3	12	37	52	239	528	1,158	1,925
August	(s)	112	86	198	3	12	37	52	250	524	1,089	1,863
September	(s)	124	89	213	3	12	35	50	263	419	806	1,488
October	(s)	234	96	330	3	12	37	52	382	323	659	1,364
November	(s)	439	104	544	3	12	35	50	594	318	678	1,589
December	(s)	702	131	834	3	12	37	52	885	396	851	2,132
Total	6	4,828	1,139	5,973	40	140	430	610	6,583	4,858	10,176	21,616
2012 January	1	818	135	954	3	14	36	54	1,008	432	884	2,323
February	1	682	115	797	3	13	34	51	848	369	737	1,954
March	(s)	^R 416	103	^R 520	3	14	36	54	^R 574	339	685	^R 1,598
April	1	^R 289	82	^R 372	3	14	35	52	^R 424	302	606	^R 1,332
May	(s)	168	86	255	3	14	36	54	309	343	741	1,394
5-Month Total	3	2,373	522	2,897	16	70	179	265	3,163	1,785	3,653	8,600
2011 5-Month Total	3	2,968	486	3,457	16	58	178	252	3,709	1,919	4,002	9,630
2010 5-Month Total	3	2,878	514	3,395	15	47	174	236	3,632	1,928	4,001	9,561

^a See "Primary Energy Consumption" in Glossary.

^b Data are estimates. See Table 10.2a for notes on series components.

^c Natural gas only; excludes the estimated portion of supplemental gaseous fuels. See Note 3, "Supplemental Gaseous Fuels," at end of Section 4.

^d Electricity retail sales to ultimate customers reported by electric utilities and, beginning in 1996, other energy service providers.

^e Total losses are calculated as the primary energy consumed by the electric power sector minus the energy content of electricity retail sales. Total losses are allocated to the end-use sectors in proportion to each sector's share of total

electricity retail sales. See Note 2, "Electrical System Energy Losses," at end of section.

R=Revised. NA=Not available. (s)=Less than 0.5 trillion Btu.

Notes: • See Note 1, "Energy Consumption Data and Surveys," at end of section. • Totals may not equal sum of components due to independent rounding.

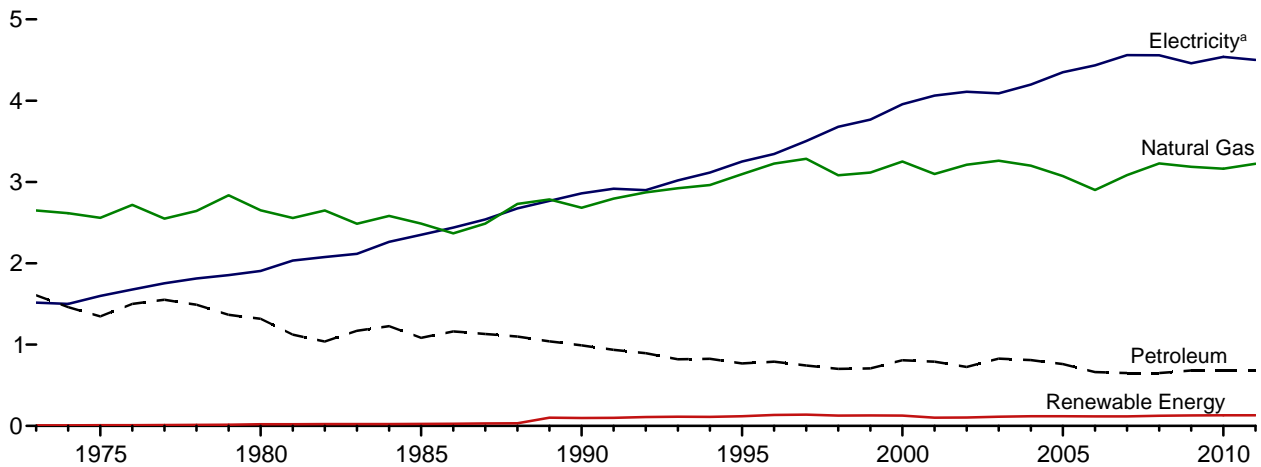
• Geographic coverage is the 50 States and the District of Columbia.

Web Page: See <http://www.eia.gov/totalenergy/data/monthly/#consumption> for all available data beginning in 1973.

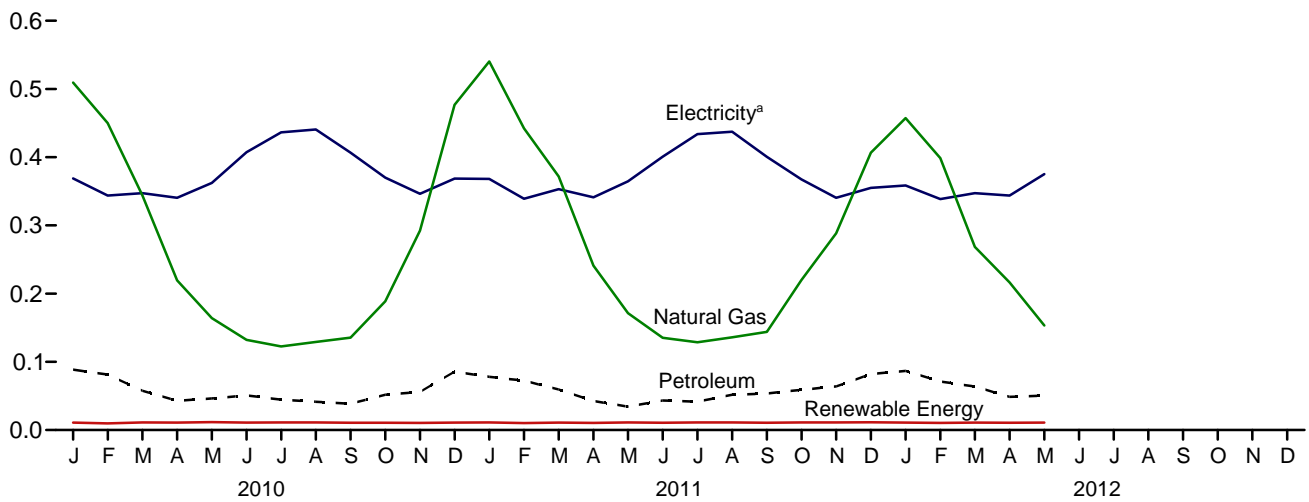
Sources: Tables 2.6, 3.8a, 4.3, 6.2, 7.6, 10.2a, A4, A5, and A6.

Figure 2.3 Commercial Sector Energy Consumption
(Quadrillion Btu)

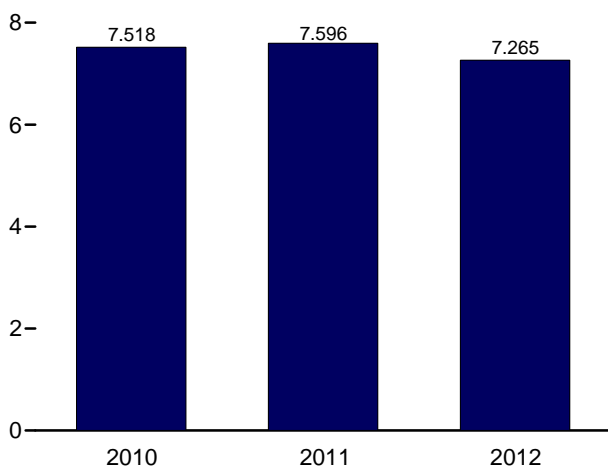
By Major Source, 1973-2011



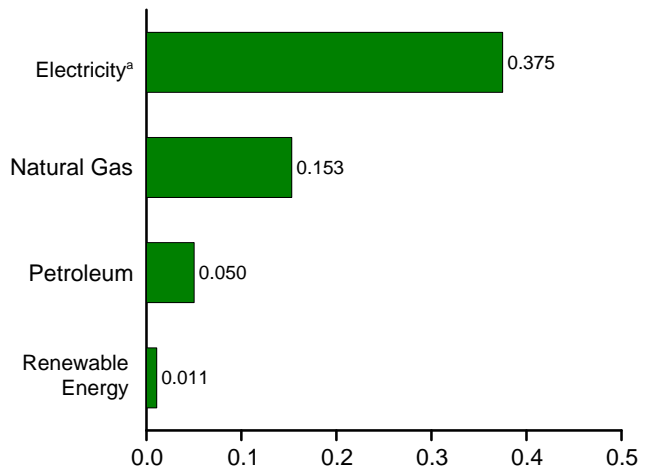
By Major Source, Monthly



Total, January-May



By Major Source, May 2012



^a Electricity retail sales.
Web Page: <http://www.eia.doe.gov/emeu/mer/consump.html>.
Source: Table 2.3.

Table 2.3 Commercial Sector Energy Consumption
(Trillion Btu)

	Primary Consumption ^a										Electricity Retail Sales ^f	Electrical System Energy Losses ^g	Total	
	Fossil Fuels				Renewable Energy ^b									
	Coal	Natural Gas ^c	Petroleum ^d	Total	Hydroelectric Power ^e	Geothermal	Solar/PV	Wind	Biomass	Total				Total Primary
1973 Total	160	2,649	1,607	4,416	NA	NA	NA	NA	7	7	4,423	1,517	3,604	9,543
1975 Total	147	2,558	1,346	4,051	NA	NA	NA	NA	8	8	4,059	1,598	3,835	9,492
1980 Total	115	2,651	1,318	4,084	NA	NA	NA	NA	21	21	4,105	1,906	4,567	10,578
1985 Total	137	2,488	1,083	3,708	NA	NA	NA	NA	24	24	3,732	2,351	5,368	11,451
1990 Total	124	2,682	991	3,798	1	3	—	—	94	98	3,896	2,860	6,564	13,320
1995 Total	117	3,096	769	3,982	1	5	—	—	113	118	4,101	3,252	7,338	14,690
1996 Total	122	3,226	790	4,138	1	5	—	—	129	135	4,273	3,344	7,555	15,172
1997 Total	129	3,285	743	4,157	1	6	—	—	131	138	4,295	3,503	7,883	15,681
1998 Total	93	3,083	702	3,878	1	7	—	—	118	127	4,005	3,678	8,285	15,968
1999 Total	103	3,115	707	3,925	1	7	—	—	121	129	4,053	3,766	8,557	16,376
2000 Total	92	3,252	807	4,150	1	8	—	—	119	128	4,278	3,956	8,942	17,175
2001 Total	97	3,097	790	3,984	1	8	—	—	92	101	4,084	4,062	8,990	17,137
2002 Total	90	3,212	726	4,028	(s)	9	—	—	95	104	4,132	4,110	9,104	17,345
2003 Total	82	3,261	827	4,170	1	11	—	—	101	113	4,283	4,090	8,969	17,343
2004 Total	103	3,201	809	4,113	1	12	—	—	105	118	4,232	4,198	9,229	17,659
2005 Total	97	3,073	761	3,932	1	14	—	—	105	120	4,051	4,351	9,455	17,857
2006 Total	65	2,902	663	3,629	1	14	—	—	103	118	3,747	4,435	9,529	17,711
2007 Total	70	3,085	649	3,805	1	14	—	—	103	118	3,922	4,560	9,773	18,255
2008 Total	69	3,228	651	3,948	1	15	(s)	—	109	125	4,073	4,558	9,749	18,381
2009 Total	63	3,187	682	3,932	1	17	(s)	(s)	112	129	4,061	4,460	9,378	17,899
2010														
January	8	509	89	606	(s)	2	(s)	(s)	9	11	617	369	766	1,752
February	7	450	81	538	(s)	1	(s)	(s)	8	10	548	344	694	1,585
March	6	344	58	407	(s)	2	(s)	(s)	9	11	419	347	699	1,465
April	4	220	43	266	(s)	2	(s)	(s)	9	11	277	340	689	1,307
May	4	164	46	214	(s)	2	(s)	(s)	10	12	226	362	822	1,410
June	4	132	51	187	(s)	2	(s)	(s)	9	11	198	407	896	1,501
July	4	123	44	171	(s)	2	(s)	(s)	9	11	182	436	927	1,546
August	4	129	41	175	(s)	2	(s)	(s)	10	11	186	441	920	1,547
September	4	135	39	178	(s)	2	(s)	(s)	9	11	189	406	795	1,390
October	5	189	52	245	(s)	2	(s)	(s)	9	11	256	370	738	1,364
November	5	292	56	353	(s)	2	(s)	(s)	9	10	364	346	741	1,451
December	6	477	85	568	(s)	2	(s)	(s)	9	11	579	369	813	1,761
Total	60	3,164	685	3,908	1	19	(s)	(s)	111	130	4,039	4,539	9,501	18,078
2011														
January	7	540	78	625	(s)	2	(s)	(s)	9	11	636	368	762	1,766
February	6	442	72	521	(s)	2	(s)	(s)	9	10	531	339	670	1,540
March	6	372	60	437	(s)	2	(s)	(s)	9	11	448	353	742	1,544
April	4	241	43	287	(s)	2	(s)	(s)	9	10	298	341	720	1,359
May	4	171	34	210	(s)	2	(s)	(s)	9	11	221	365	802	1,387
June	4	135	43	182	(s)	2	(s)	(s)	9	11	193	401	868	1,462
July	3	129	42	174	(s)	2	(s)	(s)	9	11	185	434	950	1,569
August	3	136	52	191	(s)	2	(s)	(s)	9	11	202	437	908	1,548
September	3	144	54	201	(s)	2	(s)	(s)	9	11	211	401	770	1,382
October	3	220	59	282	(s)	2	(s)	(s)	9	11	293	367	751	1,411
November	4	288	64	356	(s)	2	(s)	(s)	9	11	367	340	726	1,434
December	4	406	82	493	(s)	2	(s)	(s)	10	11	504	355	762	1,621
Total	51	3,225	683	3,959	1	20	(s)	(s)	110	131	4,089	4,501	9,429	18,020
2012														
January	5	457	87	549	(s)	2	(s)	(s)	9	11	^R 559	359	734	1,652
February	4	399	71	474	(s)	2	(s)	(s)	9	10	484	339	676	1,499
March	4	^R 268	64	^R 336	(s)	2	(s)	(s)	9	11	^R 347	347	702	^R 1,396
April	4	^R 216	49	^R 269	(s)	2	(s)	(s)	9	11	^R 280	344	691	^R 1,314
May	3	153	50	207	(s)	2	(s)	(s)	9	11	218	375	810	1,403
5-Month Total	20	1,494	321	1,835	(s)	8	(s)	(s)	45	54	1,888	1,763	3,613	7,265
2011 5-Month Total	27	1,767	287	2,080	1	8	(s)	(s)	45	54	2,134	1,766	3,696	7,596
2010 5-Month Total	28	1,687	317	2,031	(s)	8	(s)	(s)	46	54	2,086	1,763	3,670	7,518

^a See "Primary Energy Consumption" in Glossary.

^b Most data are estimates. See Table 10.2a for notes on series components and estimation.

^c Natural gas only; excludes the estimated portion of supplemental gaseous fuels. See Note 3, "Supplemental Gaseous Fuels," at end of Section 4.

^d Does not include biofuels that have been blended with petroleum—biofuels are included in "Biomass."

^e Conventional hydroelectric power.

^f Electricity retail sales to ultimate customers reported by electric utilities and, beginning in 1996, other energy service providers.

^g Total losses are calculated as the primary energy consumed by the electric power sector minus the energy content of electricity retail sales. Total losses are allocated to the end-use sectors in proportion to each sector's share of total

electricity retail sales. See Note 2, "Electrical System Energy Losses," at end of section.

^R=Revised. NA=Not available. —=No data reported. (s)=Less than 0.5 trillion Btu.

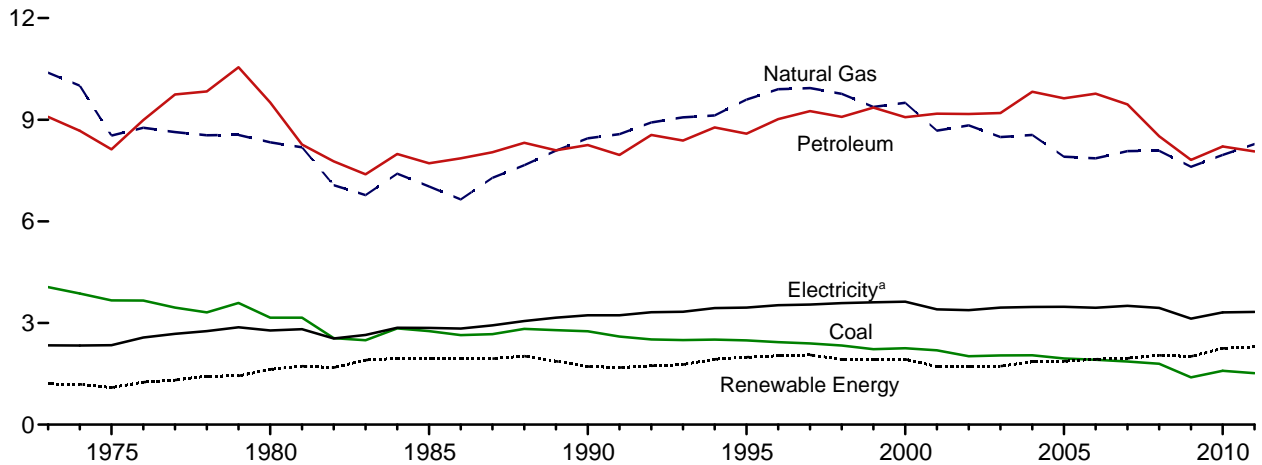
Notes: • The commercial sector includes commercial combined-heat-and-power (CHP) and commercial electricity-only plants. See Note, "Classification of Power Plants Into Energy-Use Sectors," at end of Section 7. • See Note 1, "Energy Consumption Data and Surveys," at end of section. • Totals may not equal sum of components due to independent rounding. • Geographic coverage is the 50 States and the District of Columbia.

Web Page: See <http://www.eia.gov/totalenergy/data/monthly/#consumption> for all available data beginning in 1973.

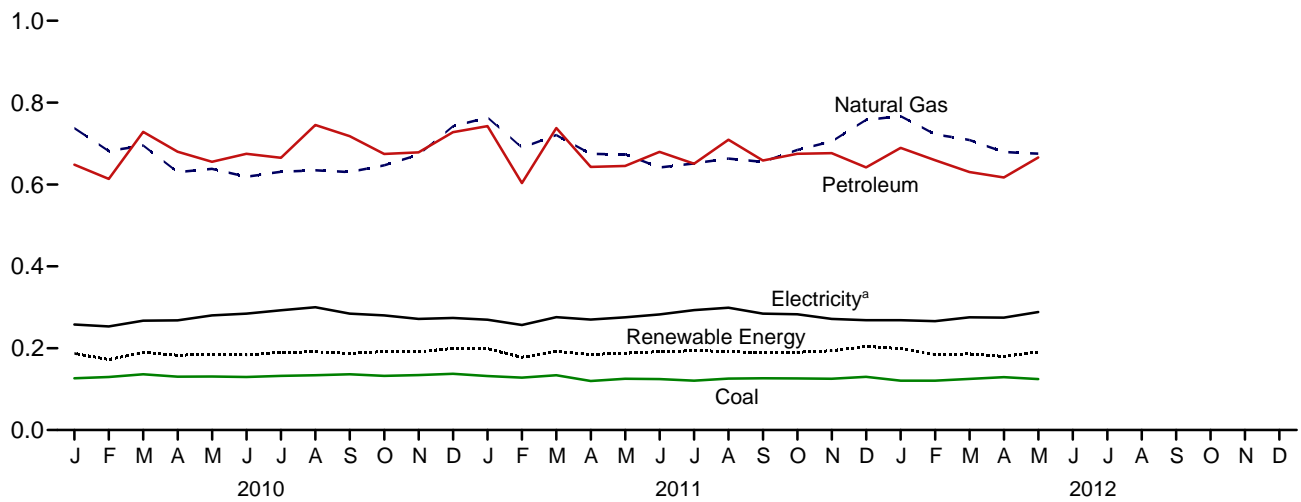
Sources: Tables 2.6, 3.8a, 4.3, 6.2, 7.6, 10.2a, A4, A5, and A6.

Figure 2.4 Industrial Sector Energy Consumption
(Quadrillion Btu)

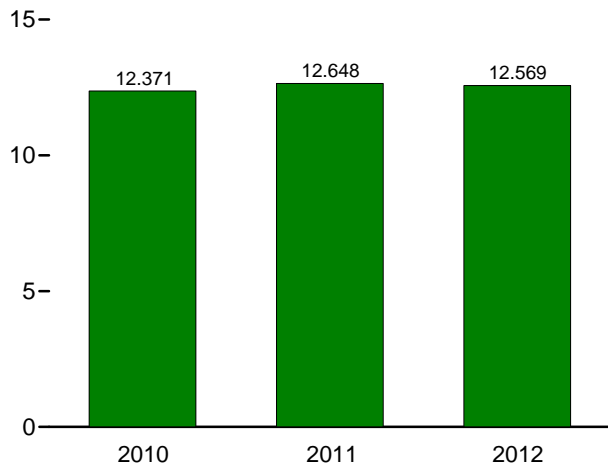
By Major Source, 1973-2011



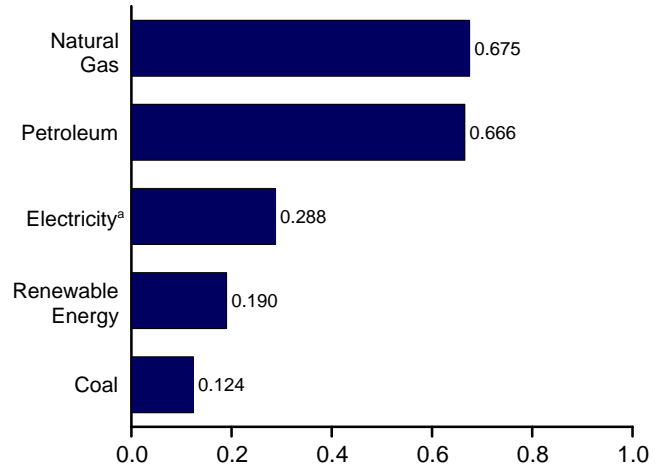
By Major Source, Monthly



Total, January-May



By Major Source, May 2012



^a Electricity retail sales.
Web Page: <http://www.eia.gov/totalenergy/data/monthly/#consumption>.
Source: Table 2.4.

Table 2.4 Industrial Sector Energy Consumption
(Trillion Btu)

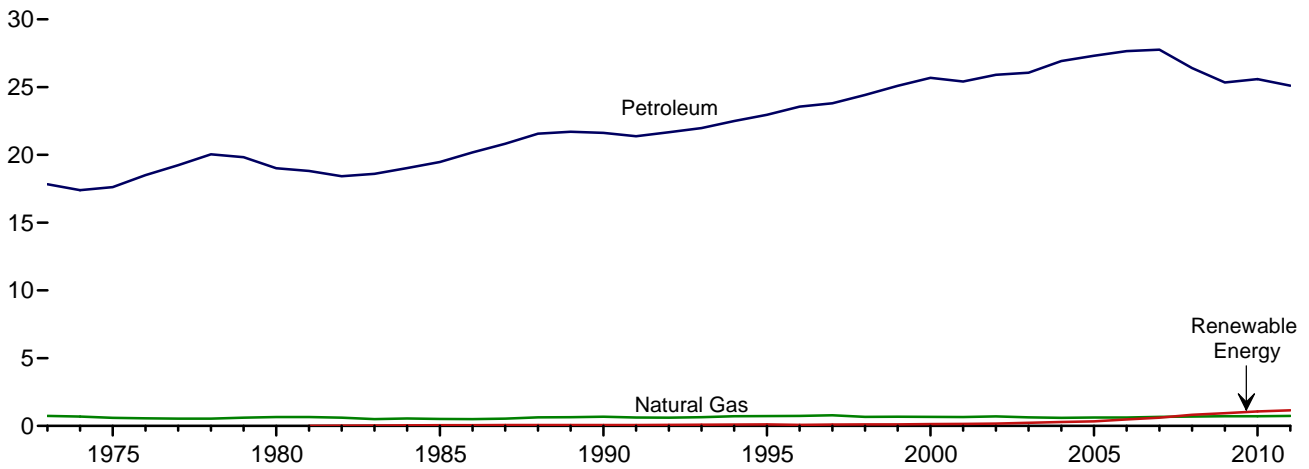
	Primary Consumption ^a										Total Primary	Elec- tricity Retail Sales ^g	Electrical System Energy Losses ^h	Total ^e	
	Fossil Fuels				Renewable Energy ^b										
	Coal	Natural Gas ^c	Petro- leum ^d	Total ^e	Hydro- electric Power ^f	Geo- thermal	Solar/ PV	Wind	Bio- mass	Total					
1973 Total	4,057	10,388	9,083	23,521	35	NA	NA	NA	1,165	1,200	24,720	2,341	5,562	32,623	
1975 Total	3,667	8,532	8,127	20,339	32	NA	NA	NA	1,063	1,096	21,434	2,346	5,632	29,413	
1980 Total	3,155	8,333	9,509	20,962	33	NA	NA	NA	1,600	1,633	22,595	2,781	6,664	32,039	
1985 Total	2,760	7,032	7,714	17,492	33	NA	NA	NA	1,918	1,951	19,443	2,855	6,518	28,816	
1990 Total	2,756	8,451	8,251	19,463	31	2	-	-	1,684	1,717	21,180	3,226	7,404	31,810	
1995 Total	2,488	9,592	8,586	20,727	55	3	-	-	1,934	1,992	22,719	3,455	7,796	33,971	
1996 Total	2,434	9,901	9,019	21,377	61	3	-	-	1,969	2,033	23,410	3,527	7,968	34,904	
1997 Total	2,395	9,933	9,255	21,629	58	3	-	-	1,996	2,057	23,686	3,542	7,972	35,200	
1998 Total	2,335	9,763	9,082	21,248	55	3	-	-	1,872	1,929	23,177	3,587	8,079	34,843	
1999 Total	2,227	9,375	9,356	21,016	49	4	-	-	1,882	1,934	22,950	3,611	8,203	34,764	
2000 Total	2,256	9,500	9,075	20,896	42	4	-	-	1,881	1,928	22,824	3,631	8,208	34,664	
2001 Total	2,192	8,676	9,178	20,075	33	5	-	-	1,681	1,719	21,794	3,400	7,526	32,720	
2002 Total	2,019	8,832	9,168	20,079	39	5	-	-	1,676	1,720	21,799	3,379	7,484	32,662	
2003 Total	2,041	8,488	9,197	19,777	43	3	-	-	1,679	1,726	21,503	3,454	7,575	32,532	
2004 Total	2,047	8,550	9,825	20,559	33	4	-	-	1,817	1,853	22,412	3,473	7,635	33,520	
2005 Total	1,954	7,907	9,633	19,538	32	4	-	-	1,837	1,873	21,411	3,477	7,557	32,446	
2006 Total	1,914	7,861	9,770	19,606	29	4	-	-	1,897	1,930	21,536	3,451	7,415	32,401	
2007 Total	1,865	8,074	9,451	19,414	16	5	-	-	1,936	1,956	21,370	3,507	7,517	32,394	
2008 Total	1,796	8,083	8,511	18,431	17	5	-	-	2,028	2,049	20,480	3,444	7,365	31,290	
2009 Total	1,396	7,609	7,816	16,797	18	4	-	-	1,994	2,016	18,813	3,130	6,582	28,525	
2010															
January	126	737	648	1,508	2	(s)	(s)	-	185	187	1,695	258	535	2,487	
February	130	681	614	1,429	2	(s)	(s)	-	170	172	1,601	253	511	2,365	
March	136	695	728	1,562	2	(s)	(s)	-	188	190	1,752	267	538	2,557	
April	130	630	680	1,441	2	(s)	(s)	-	181	183	1,624	268	543	2,435	
May	131	638	655	1,427	2	(s)	(s)	-	183	185	1,612	280	635	2,527	
June	130	619	675	1,424	1	(s)	(s)	-	182	183	1,608	284	625	2,517	
July	132	631	665	1,429	1	(s)	(s)	-	188	190	1,618	292	621	2,532	
August	134	635	745	1,515	1	(s)	(s)	-	190	191	1,707	300	626	2,633	
September	136	630	718	1,484	1	(s)	(s)	-	185	187	1,671	284	557	2,512	
October	132	647	675	1,452	1	(s)	(s)	-	190	192	1,644	280	559	2,482	
November	134	672	679	1,479	1	(s)	(s)	-	190	191	1,671	272	581	2,523	
December	138	742	728	1,602	1	(s)	(s)	-	198	199	1,802	274	604	2,679	
Total	1,590	7,959	8,210	17,753	16	4	(s)	(s)	2,230	2,250	20,003	3,313	6,934	30,250	
2011															
January	132	764	742	1,638	1	(s)	(s)	(s)	197	199	1,837	270	558	2,665	
February	128	690	604	1,422	2	(s)	(s)	(s)	176	178	1,600	257	508	2,364	
March	134	721	738	1,595	2	(s)	(s)	(s)	190	192	1,787	276	580	2,642	
April	120	675	643	1,438	2	(s)	(s)	(s)	182	185	1,622	270	569	2,462	
May	125	674	645	1,446	2	(s)	(s)	(s)	185	187	1,633	275	606	2,515	
June	124	641	680	1,447	1	(s)	(s)	(s)	190	192	1,639	282	611	2,533	
July	121	651	651	1,423	1	(s)	(s)	(s)	192	194	1,616	293	642	2,552	
August	126	663	709	1,502	1	(s)	(s)	(s)	191	192	1,695	299	620	2,614	
September	126	655	658	1,440	1	(s)	(s)	(s)	187	188	1,629	284	546	2,459	
October	126	684	675	1,485	1	(s)	(s)	(s)	189	190	1,675	283	578	2,536	
November	125	705	677	1,505	1	(s)	(s)	(s)	192	194	1,699	271	579	2,549	
December	130	758	642	1,532	2	(s)	(s)	(s)	202	204	1,736	268	576	2,581	
Total	1,518	8,282	8,064	17,874	18	4	(s)	(s)	2,273	2,295	20,169	3,329	6,973	30,471	
2012															
January	121	767	^R 689	^R 1,579	2	(s)	(s)	(s)	197	199	^R 1,778	268	549	^R 2,596	
February	121	723	^R 659	^R 1,503	2	(s)	(s)	(s)	183	185	^R 1,687	266	531	^R 2,484	
March	125	^R 708	^R 630	^R 1,466	2	(s)	(s)	(s)	184	186	^R 1,653	275	556	^R 2,484	
April	129	^R 679	^R 617	^R 1,432	2	(s)	(s)	(s)	178	180	^R 1,612	274	552	^R 2,438	
May	124	675	666	1,467	2	(s)	(s)	(s)	188	190	1,657	288	622	2,568	
5-Month Total	620	3,552	3,262	7,446	9	2	(s)	(s)	930	940	8,386	1,372	2,810	12,569	
2011 5-Month Total	639	3,523	3,372	7,539	9	2	(s)	(s)	930	941	8,480	1,348	2,820	12,648	
2010 5-Month Total	654	3,382	3,326	7,366	8	2	(s)	-	907	917	8,283	1,326	2,762	12,371	

^a See "Primary Energy Consumption" in Glossary.
^b Most data are estimates. See Table 10.2b for notes on series components and estimation.
^c Natural gas only; excludes the estimated portion of supplemental gaseous fuels. See Note 3, "Supplemental Gaseous Fuels," at end of Section 4.
^d Does not include biofuels that have been blended with petroleum—biofuels are included in "Biomass."
^e Includes coal coke net imports, which are not separately displayed. See Tables 1.4a and 1.4b.
^f Conventional hydroelectric power.
^g Electricity retail sales to ultimate customers reported by electric utilities and, beginning in 1996, other energy service providers.
^h Total losses are calculated as the primary energy consumed by the electric power sector minus the energy content of electricity retail sales. Total losses are

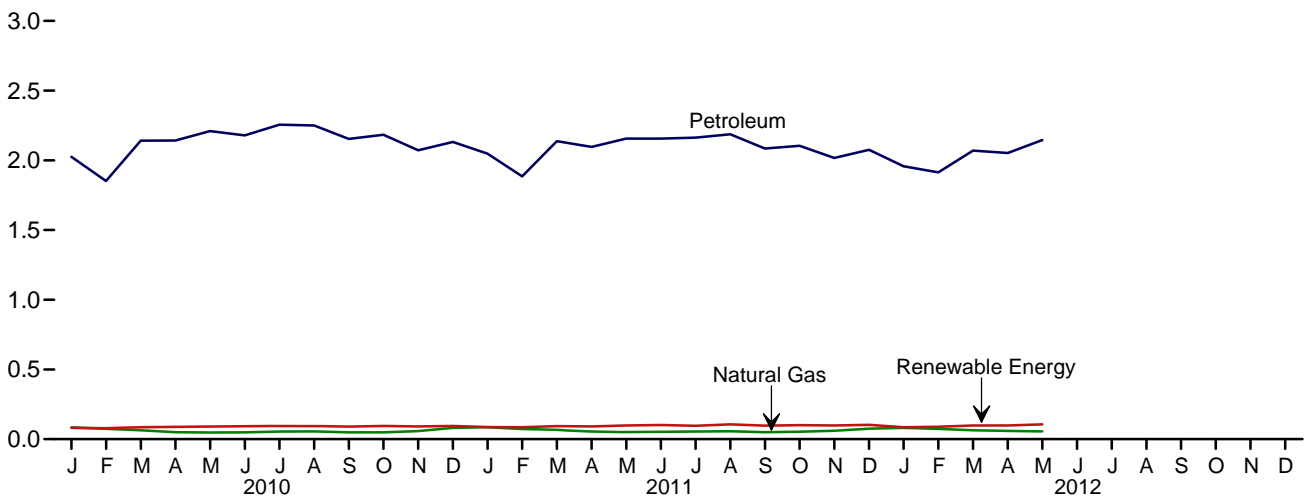
allocated to the end-use sectors in proportion to each sector's share of total electricity retail sales. See Note 2, "Electrical System Energy Losses," at end of section.
R=Revised. NA=Not available. - =No data reported. (s)=Less than 0.5 trillion Btu.
Notes: • The industrial sector includes industrial combined-heat-and-power (CHP) and industrial electricity-only plants. See Note, "Classification of Power Plants Into Energy-Use Sectors," at end of Section 7. • See Note 1, "Energy Consumption Data and Surveys," at end of section. • Totals may not equal sum of components due to independent rounding. • Geographic coverage is the 50 States and the District of Columbia.
Web Page: See <http://www.eia.gov/totalenergy/data/monthly/#consumption> for all available data beginning in 1973.
Sources: Tables 1.4a, 1.4b, 2.6, 3.8b, 4.3, 6.2, 7.6, 10.2b, A4, A5, and A6.

Figure 2.5 Transportation Sector Energy Consumption
(Quadrillion Btu)

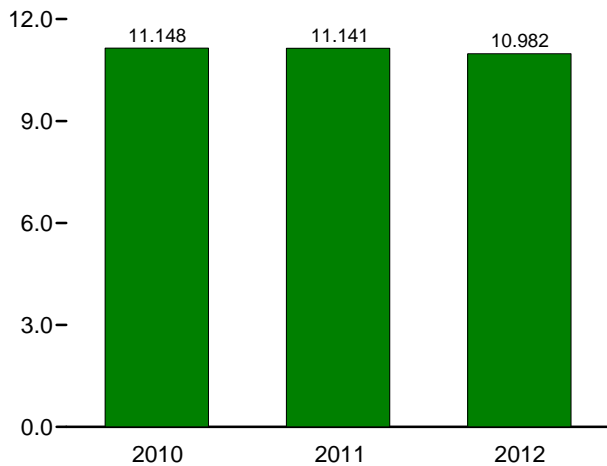
By Major Source, 1973-2011



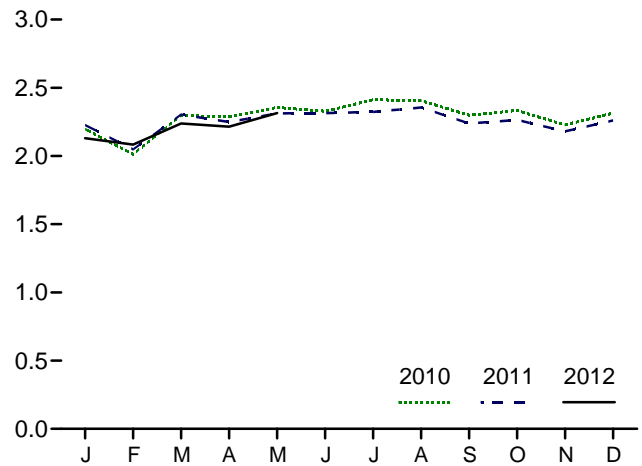
By Major Source, Monthly



Total, January-May



Total, Monthly



Web Page: <http://www.eia.gov/totalenergy/data/monthly/#consumption>.
Source: Table 2.5.

Table 2.5 Transportation Sector Energy Consumption
(Trillion Btu)

	Primary Consumption ^a					Total Primary	Electricity Retail Sales ^e	Electrical System Energy Losses ^f	Total
	Fossil Fuels				Renewable Energy ^b				
	Coal	Natural Gas ^c	Petroleum ^d	Total	Biomass				
1973 Total	3	743	17,832	18,577	NA	18,577	11	25	18,613
1975 Total	1	595	17,615	18,210	NA	18,210	10	24	18,245
1980 Total	(9)	650	19,009	19,659	NA	19,659	11	27	19,697
1985 Total	(9)	519	19,472	19,992	50	20,041	14	32	20,088
1990 Total	(9)	680	21,626	22,306	60	22,366	16	37	22,420
1995 Total	(9)	724	22,955	23,679	112	23,791	17	38	23,846
1996 Total	(9)	737	23,565	24,302	81	24,383	17	38	24,437
1997 Total	(9)	780	23,813	24,593	102	24,695	17	38	24,750
1998 Total	(9)	666	24,422	25,088	113	25,201	17	38	25,256
1999 Total	(9)	675	25,098	25,774	118	25,891	17	40	25,949
2000 Total	(9)	672	25,682	26,354	135	26,489	18	42	26,548
2001 Total	(9)	658	25,412	26,070	142	26,213	20	43	26,275
2002 Total	(9)	699	25,913	26,612	170	26,781	19	42	26,842
2003 Total	(9)	627	26,063	26,690	230	26,920	23	51	26,994
2004 Total	(9)	602	26,925	27,527	290	27,817	25	54	27,895
2005 Total	(9)	624	27,309	27,933	339	28,272	26	56	28,353
2006 Total	(9)	625	27,651	28,276	475	28,751	25	54	28,830
2007 Total	(9)	663	27,763	28,427	602	29,029	28	60	29,117
2008 Total	(9)	692	26,407	27,099	826	27,925	26	56	28,008
2009 Total	(9)	715	25,339	26,054	935	26,989	27	56	27,071
2010 January	(9)	84	2,025	2,109	81	2,190	2	5	2,198
February	(9)	74	1,851	1,926	79	2,004	2	5	2,012
March	(9)	64	2,141	2,205	85	2,290	2	5	2,297
April	(9)	50	2,142	2,193	87	2,280	2	4	2,286
May	(9)	48	2,209	2,257	92	2,349	2	5	2,356
June	(9)	49	2,179	2,228	93	2,320	2	5	2,328
July	(9)	54	2,256	2,310	94	2,404	2	5	2,411
August	(9)	56	2,250	2,306	94	2,399	2	4	2,406
September	(9)	48	2,153	2,202	90	2,291	2	4	2,298
October	(9)	49	2,184	2,233	94	2,327	2	4	2,333
November	(9)	59	2,072	2,131	91	2,221	2	4	2,228
December	(9)	81	2,132	2,213	94	2,307	2	5	2,314
Total	(9)	716	25,595	26,310	1,074	27,384	26	55	27,466
2011 January	(9)	86	2,048	2,133	86	2,220	2	5	2,227
February	(9)	73	1,884	1,957	85	2,042	2	4	2,049
March	(9)	67	2,137	2,204	93	2,297	2	5	2,304
April	(9)	55	2,096	2,152	91	2,242	2	4	2,249
May	(9)	51	2,156	2,207	99	2,306	2	5	2,312
June	(9)	50	2,156	2,207	102	2,308	2	5	2,315
July	(9)	57	2,163	2,220	96	2,316	2	5	2,323
August	(9)	57	2,187	2,244	106	2,349	2	4	2,356
September	(9)	50	2,085	2,135	97	2,232	2	4	2,238
October	(9)	53	2,104	2,157	100	2,257	2	4	2,264
November	(9)	61	2,017	2,077	98	2,175	2	4	2,181
December	(9)	75	2,076	2,151	102	2,253	2	5	2,260
Total	(9)	734	25,110	25,843	1,154	26,998	26	54	27,078
2012 January	(9)	81	^R 1,957	^R 2,038	^R 86	^R 2,124	2	5	^R 2,131
February	(9)	74	^R 1,914	^R 1,988	^R 89	^R 2,077	2	4	^R 2,084
March	(9)	64	^R 2,070	^R 2,134	^R 98	^R 2,231	2	4	^R 2,238
April	(9)	59	^R 2,052	^R 2,111	^R 98	^R 2,209	2	4	^R 2,215
May	(9)	56	^R 2,145	^R 2,201	^R 107	^R 2,308	2	5	^R 2,314
5-Month Total	(9)	334	10,138	10,472	477	10,949	11	22	10,982
2011 5-Month Total	(9)	331	10,322	10,653	454	11,107	11	23	11,141
2010 5-Month Total	(9)	320	10,369	10,689	424	11,113	11	23	11,148

^a See "Primary Energy Consumption" in Glossary.

^b Data are estimates. See Table 10.2b for notes on series components.

^c Natural gas only; does not include supplemental gaseous fuels. See Note 3, "Supplemental Gaseous Fuels," at end of Section 4.

^d Does not include biofuels that have been blended with petroleum—biofuels are included in "Biomass."

^e Electricity retail sales to ultimate customers reported by electric utilities and, beginning in 1996, other energy service providers.

^f Total losses are calculated as the primary energy consumed by the electric power sector minus the energy content of electricity retail sales. Total losses are allocated to the end-use sectors in proportion to each sector's share of total

electricity retail sales. See Note 2, "Electrical System Energy Losses," at end of section.

^g Beginning in 1978, the small amounts of coal consumed for transportation are reported as industrial sector consumption.

R=Revised. NA=Not available.

Notes: • See Note 1, "Energy Consumption Data and Surveys," at end of section. • Totals may not equal sum of components due to independent rounding.

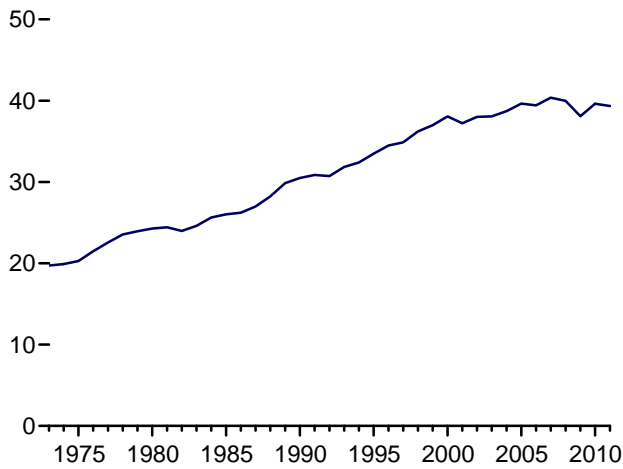
• Geographic coverage is the 50 States and the District of Columbia.

Web Page: See <http://www.eia.gov/totalenergy/data/monthly/#consumption> for all available data beginning in 1973.

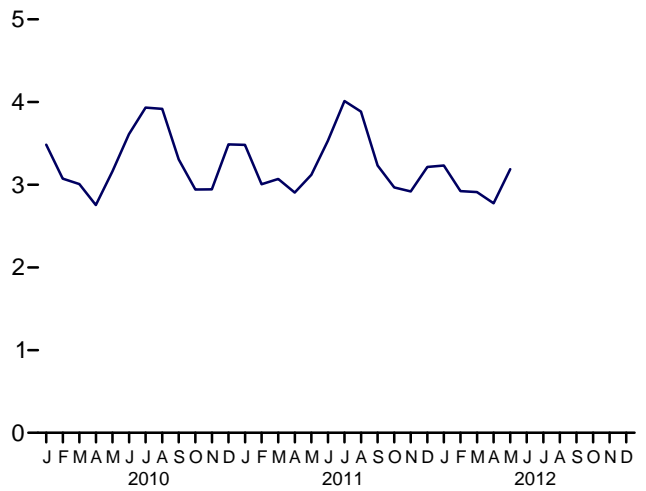
Sources: Tables 2.6, 3.8c, 4.3, 6.2, 7.6, 10.2b, A4, A5, and A6.

Figure 2.6 Electric Power Sector Energy Consumption
(Quadrillion Btu)

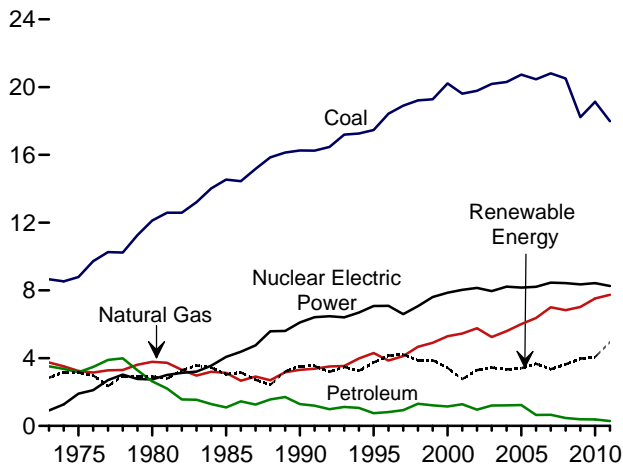
Total, 1973-2011



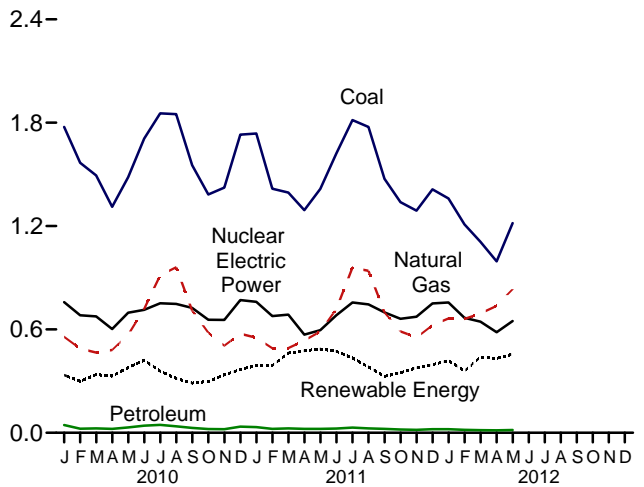
Total, Monthly



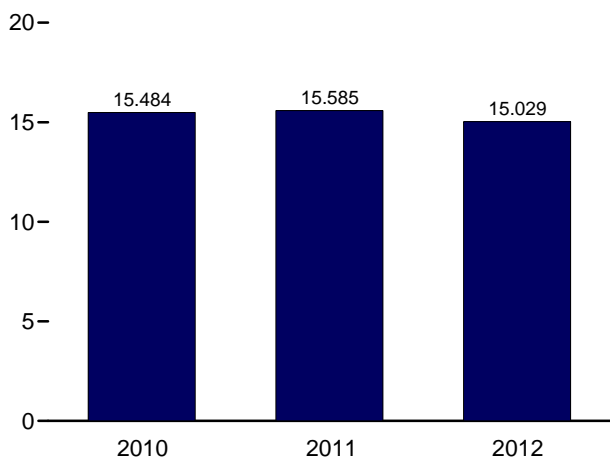
By Major Source, 1973-2011



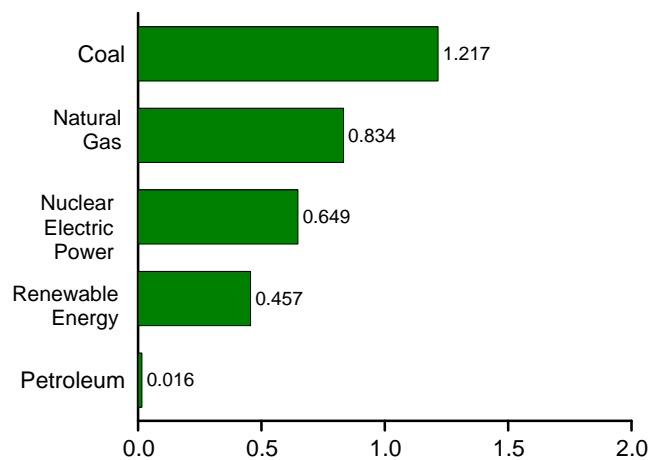
By Major Source, Monthly



Total, January-May



By Major Source, May 2012



Web Page: <http://www.eia.gov/totalenergy/data/monthly/#consumption>.
Source: Table 2.6.

Table 2.6 Electric Power Sector Energy Consumption
(Trillion Btu)

	Primary Consumption ^a												Elec- tricity Net Imports	Total Primary
	Fossil Fuels				Nuclear Electric Power	Renewable Energy ^b								
	Coal	Natural Gas ^c	Petro- leum	Total		Hydro- electric Power ^d	Geo- thermal	Solar/ PV	Wind	Bio- mass	Total			
1973 Total	8,658	3,748	3,515	15,921	910	2,827	20	NA	NA	3	2,851	49	19,731	
1975 Total	8,786	3,240	3,166	15,191	1,900	3,122	34	NA	NA	2	3,158	21	20,270	
1980 Total	12,123	3,778	2,634	18,534	2,739	2,867	53	NA	NA	4	2,925	71	24,269	
1985 Total	14,542	3,135	1,090	18,767	4,076	2,937	97	(s)	(s)	14	3,049	140	26,032	
1990 Total^e	16,261	3,309	1,289	20,859	6,104	3,014	161	4	29	317	3,524	8	30,495	
1995 Total	17,466	4,302	755	22,523	7,075	3,149	138	5	33	422	3,747	134	33,479	
1996 Total	18,429	3,862	817	23,109	7,087	3,528	148	5	33	438	4,153	137	34,485	
1997 Total	18,905	4,126	927	23,957	6,597	3,581	150	5	34	446	4,216	116	34,886	
1998 Total	19,216	4,675	1,306	25,197	7,068	3,241	151	5	31	444	3,872	88	36,225	
1999 Total	19,279	4,902	1,211	25,393	7,610	3,218	152	5	46	453	3,874	99	36,976	
2000 Total	20,220	5,293	1,144	26,658	7,862	2,768	144	5	57	453	3,427	115	38,062	
2001 Total	19,614	5,458	1,277	26,348	8,029	2,209	142	6	70	337	2,763	75	37,215	
2002 Total	19,783	5,767	961	26,511	8,145	2,650	147	6	105	380	3,288	72	38,016	
2003 Total	20,185	5,246	1,205	26,636	7,959	2,781	148	5	115	397	3,445	22	38,062	
2004 Total	20,305	5,595	1,212	27,112	8,222	2,656	148	6	142	388	3,340	39	38,713	
2005 Total	20,737	6,015	1,235	27,986	8,161	2,670	147	6	178	406	3,406	85	39,638	
2006 Total	20,462	6,375	648	27,485	8,215	2,839	145	5	264	412	3,665	63	39,428	
2007 Total	20,808	7,005	657	28,470	8,455	2,430	145	6	341	423	3,345	107	40,377	
2008 Total	20,513	6,829	468	27,810	8,427	2,494	146	9	546	435	3,630	112	39,978	
2009 Total	18,225	7,022	390	25,638	8,356	2,650	146	9	721	441	3,967	116	38,077	
2010														
January	1,775	557	45	2,377	758	217	13	(s)	67	39	335	14	3,484	
February	1,568	489	23	2,080	682	199	11	(s)	53	36	300	12	3,073	
March	1,494	466	25	1,984	676	202	13	1	84	39	338	10	3,008	
April	1,312	480	23	1,815	602	184	12	1	95	36	329	9	2,755	
May	1,483	570	31	2,084	697	243	13	1	85	36	378	5	3,163	
June	1,708	719	41	2,468	714	290	12	2	79	39	421	9	3,611	
July	1,855	914	46	2,815	752	238	12	2	66	40	358	10	3,934	
August	1,849	961	37	2,847	748	195	13	2	65	41	315	6	3,917	
September	1,554	709	28	2,291	725	168	12	1	69	38	288	2	3,306	
October	1,383	581	22	1,986	656	171	12	1	77	37	298	1	2,942	
November	1,423	506	21	1,950	655	190	12	1	95	39	337	3	2,944	
December	1,731	575	36	2,341	770	225	13	(s)	88	41	367	9	3,488	
Total	19,133	7,527	378	27,039	8,434	2,521	148	12	923	459	4,064	89	39,626	
2011														
January	1,737	552	33	2,323	760	254	14	(s)	84	38	391	9	3,483	
February	1,417	491	23	1,931	677	239	13	1	103	35	390	8	3,006	
March	1,395	491	26	1,912	686	308	14	1	103	38	463	8	3,070	
April	1,293	535	23	1,851	570	307	13	2	121	33	476	7	2,905	
May	1,416	589	22	2,027	596	321	14	2	113	35	486	12	3,121	
June	1,621	718	25	2,364	682	313	13	2	106	38	473	11	3,530	
July	1,816	959	31	2,805	756	307	13	2	72	40	434	16	4,012	
August	1,776	940	25	2,741	746	256	13	2	72	39	383	16	3,885	
September	1,475	699	22	2,196	699	209	13	2	67	37	327	10	3,232	
October	1,339	589	19	1,946	662	194	14	2	104	36	349	10	2,967	
November	1,289	553	17	1,860	674	207	13	1	120	36	377	8	2,919	
December	1,413	624	20	2,057	751	239	14	1	102	39	396	12	3,215	
Total	17,986	7,740	288	26,014	8,259	3,153	163	18	1,168	444	4,945	127	39,346	
2012														
January	1,360	663	21	2,045	757	232	14	1	135	38	420	11	3,232	
February	1,210	661	17	1,888	667	201	13	1	108	35	359	9	2,924	
March	1,108	692	15	1,816	645	255	14	2	132	37	440	10	2,911	
April	995	737	14	1,746	584	259	13	3	123	33	432	13	2,775	
May	1,217	834	16	2,067	649	281	14	4	121	36	457	15	3,188	
5-Month Total	5,890	3,588	84	9,563	3,302	1,228	69	11	619	180	2,106	58	15,029	
2011 5-Month Total	7,258	2,659	127	10,044	3,290	1,428	69	6	525	179	2,206	45	15,585	
2010 5-Month Total	7,631	2,561	147	10,340	3,415	1,045	62	4	384	186	1,680	50	15,484	

^a See "Primary Energy Consumption" in Glossary.

^b See Table 10.2c for notes on series components.

^c Natural gas only; excludes the estimated portion of supplemental gaseous fuels. See Note 3, "Supplemental Gaseous Fuels," at end of Section 4.

^d Conventional hydroelectric power.

^e Through 1988, data are for electric utilities only. Beginning in 1989, data are for electric utilities and independent power producers.

R=Revised. NA=Not available. (s)=Less than 0.5 trillion Btu.

Notes: • Data are for fuels consumed to produce electricity and useful thermal

output. • The electric power sector comprises electricity-only and combined-heat-and-power (CHP) plants within the NAICS 22 category whose primary business is to sell electricity, or electricity and heat, to the public. • See Note 1, "Energy Consumption Data and Surveys," at end of section. • Totals may not equal sum of components due to independent rounding. • Geographic coverage is the 50 States and the District of Columbia.

Web Page: See <http://www.eia.gov/totalenergy/data/monthly/#consumption> for all available data beginning in 1973.

Sources: Tables 3.8c, 4.3, 6.2, 7.1, 7.2b, 10.2c, A4, A5, and A6.

Energy Consumption by Sector

Note 1. Energy Consumption Data and Surveys. Most of the data in this section of the Monthly Energy Review (MER) are developed from a group of energy-related surveys, typically called "supply surveys," conducted by the U.S. Energy Information Administration (EIA). Supply surveys are directed to suppliers and marketers of specific energy sources. They measure the quantities of specific energy sources produced, or the quantities supplied to the market, or both. The data obtained from EIA's supply surveys are integrated to yield the summary consumption statistics published in this section (and in Section 1) of the MER.

Users of EIA's energy consumption statistics should be aware of a second group of energy-related surveys, typically called "consumption surveys." Consumption surveys gather information on the types of energy consumed by end users of energy, along with the characteristics of those end users that can be associated with energy use. For example, the Manufacturing Energy Consumption Survey belongs to the consumption survey group because it collects information directly from end users (the manufacturing establishments). There are important differences between the supply and consumption surveys that need to be taken into account in any analysis that uses both data sources. For information on

those differences, see Energy Consumption by End-Use Sector, A Comparison of Measures by Consumption and Supply Surveys, DOE/EIA-0533, U.S. Energy Information Administration, Washington, DC, April 6, 1990.

Note 2. Electrical System Energy Losses. Electrical system energy losses are calculated as the difference between total primary consumption by the electric power sector (see Table 2.6) and the total energy content of electricity retail sales (see Tables 7.6 and A6). Most of these losses occur at steam-electric power plants (conventional and nuclear) in the conversion of heat energy into mechanical energy to turn electric generators. The loss is a thermodynamically necessary feature of the steam-electric cycle. Part of the energy input-to-output losses is a result of imputing fossil energy equivalent inputs for hydroelectric and other energy sources, since there is no generally accepted practice for measuring those thermal conversion rates. In addition to conversion losses, other losses include power plant use of electricity, transmission and distribution of electricity from power plants to end-use consumers (also called "line losses"), and unaccounted for electricity. Total losses are allocated to the end-use sectors in proportion to each sector's share of total electricity sales. Overall, about two thirds of total energy input is lost in conversion. Currently, of electricity generated, approximately 5 percent is lost in plant use and 7 percent is lost in transmission and distribution.