



Figure III-13. Coastal Commuting Zones (Labor Market Areas and Economic Impact Areas) -- Gulf of Mexico

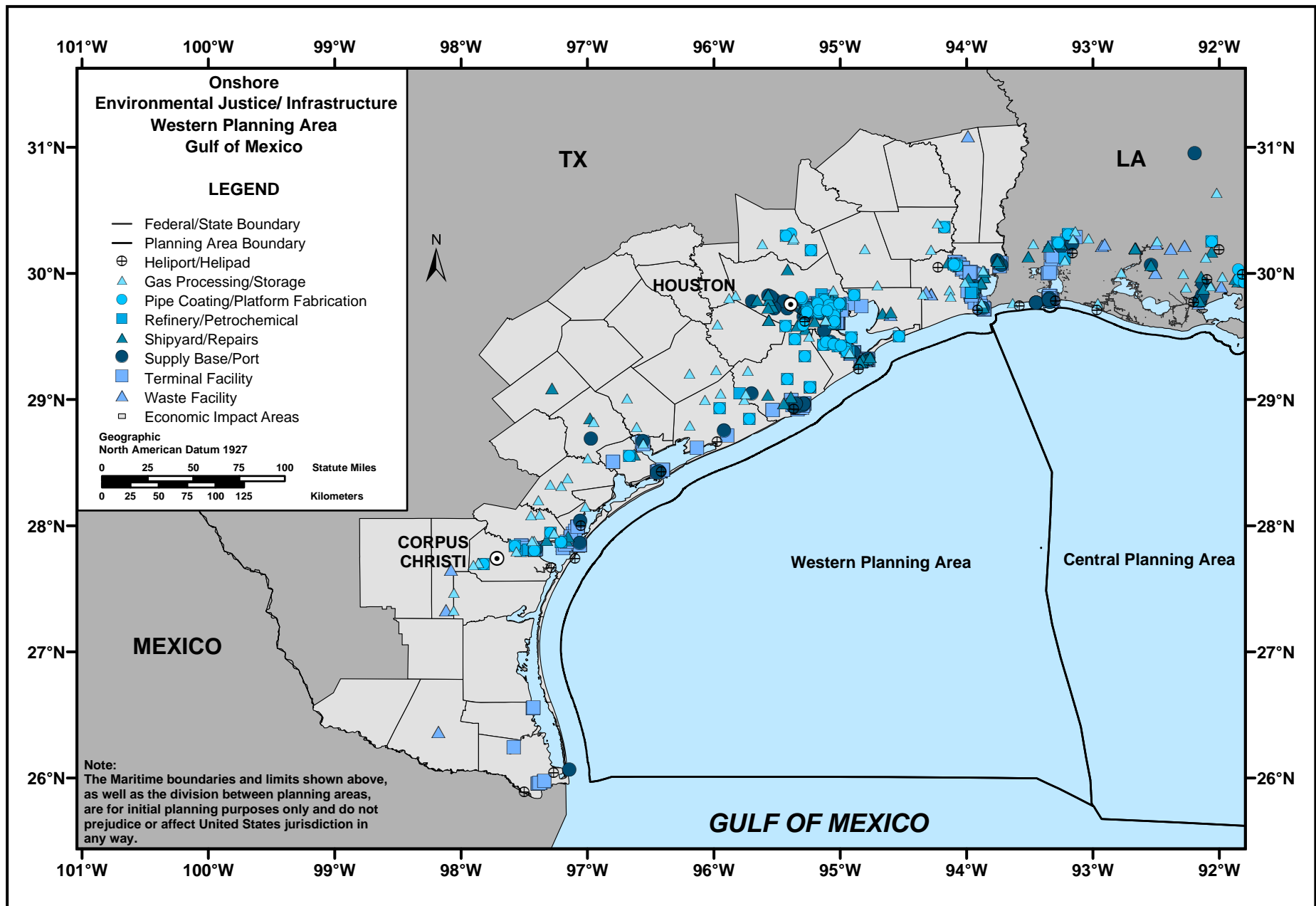


Figure III-14. Onshore Environmental Justice/Infrastructure Locations -- Western Gulf of Mexico Planning Area

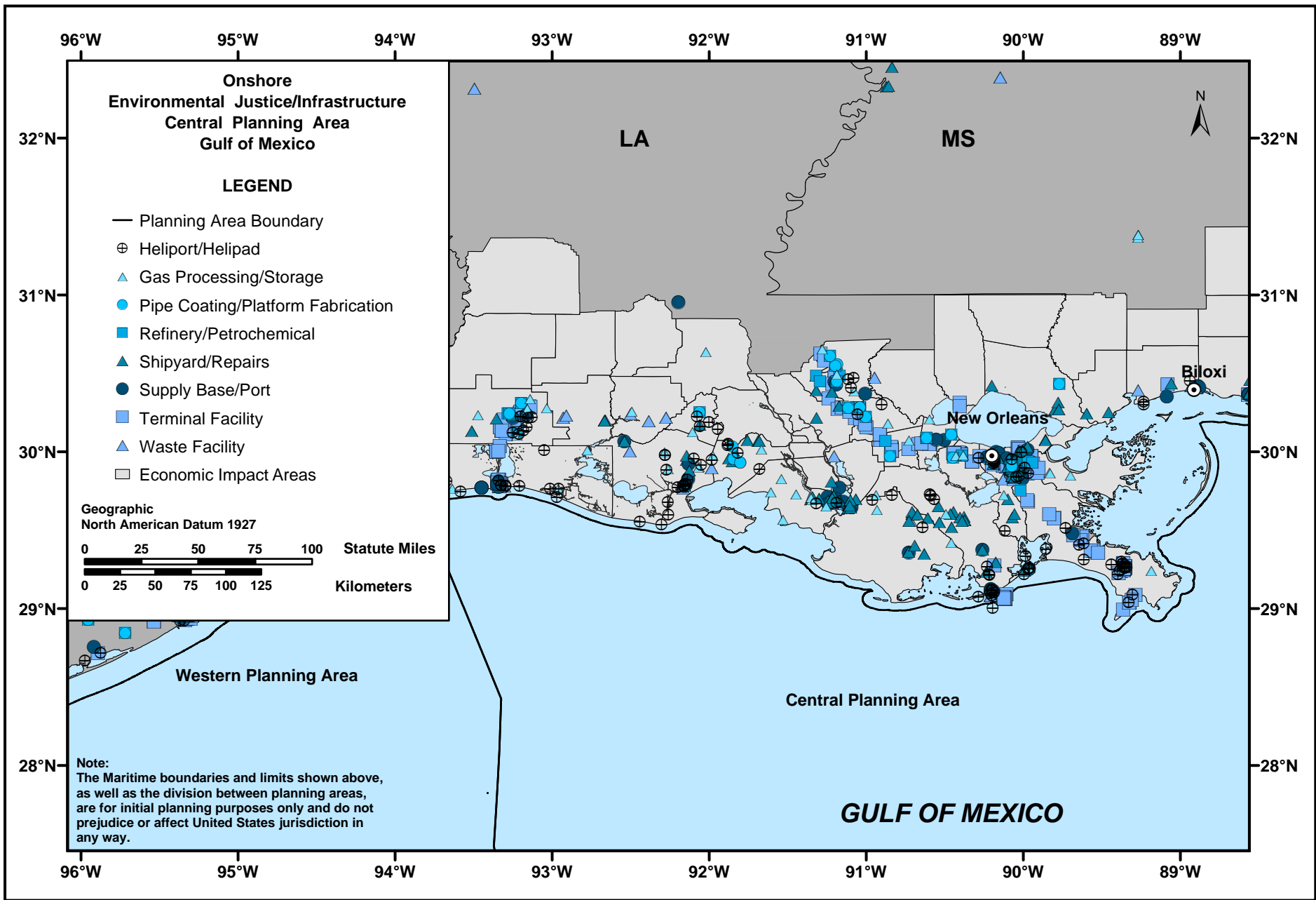


Figure III-15. Onshore Environmental Justice/Infrastructure Locations -- Central Gulf of Mexico Planning Area

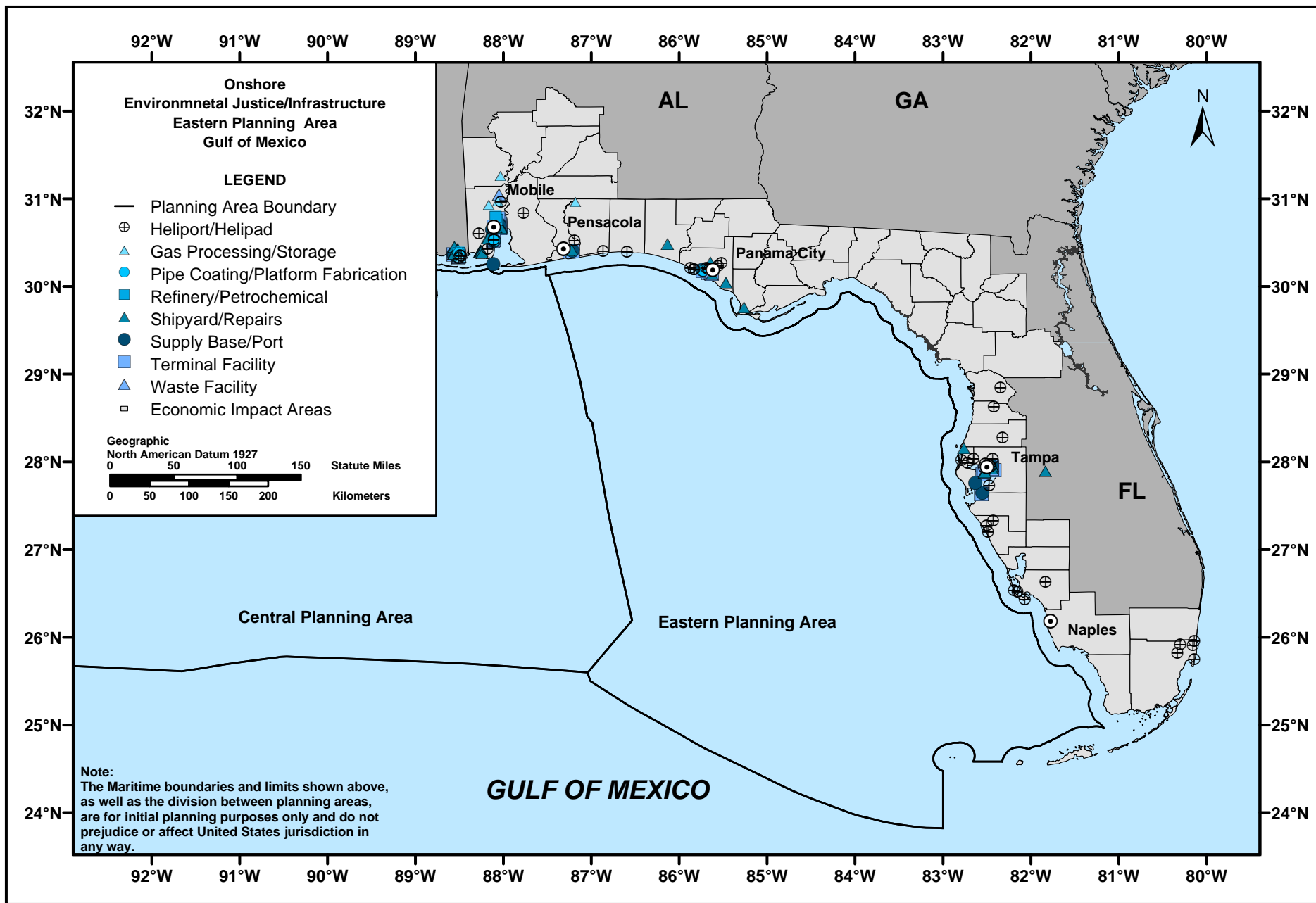


Figure III-16. Onshore Environmental Justice/Infrastructure Locations -- Eastern Gulf of Mexico Planning Area

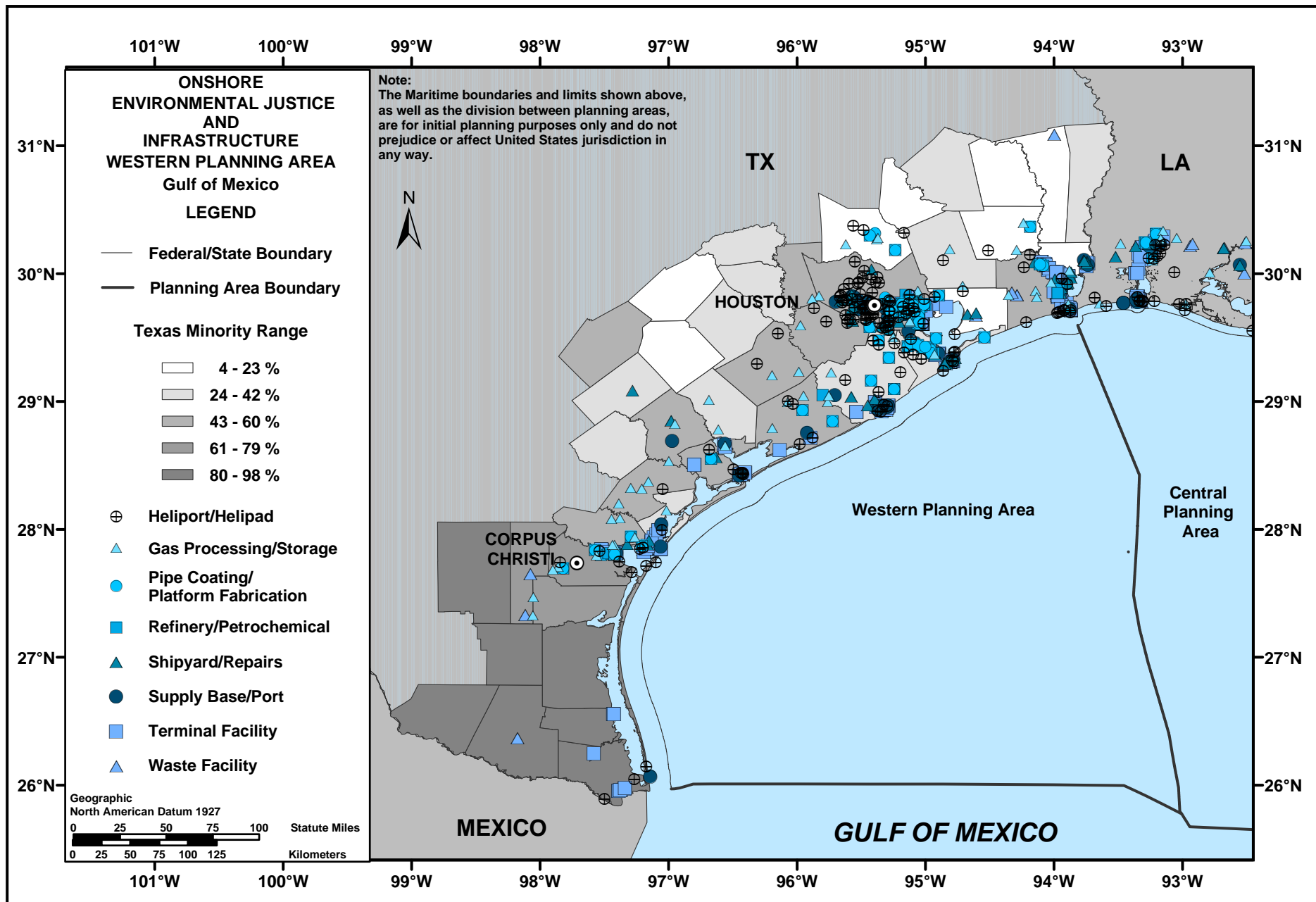


Figure III-17. Onshore Environmental Justice/Infrastructure Locations -- Western Gulf of Mexico Planning Area (Texas Minority Percentage Rates)

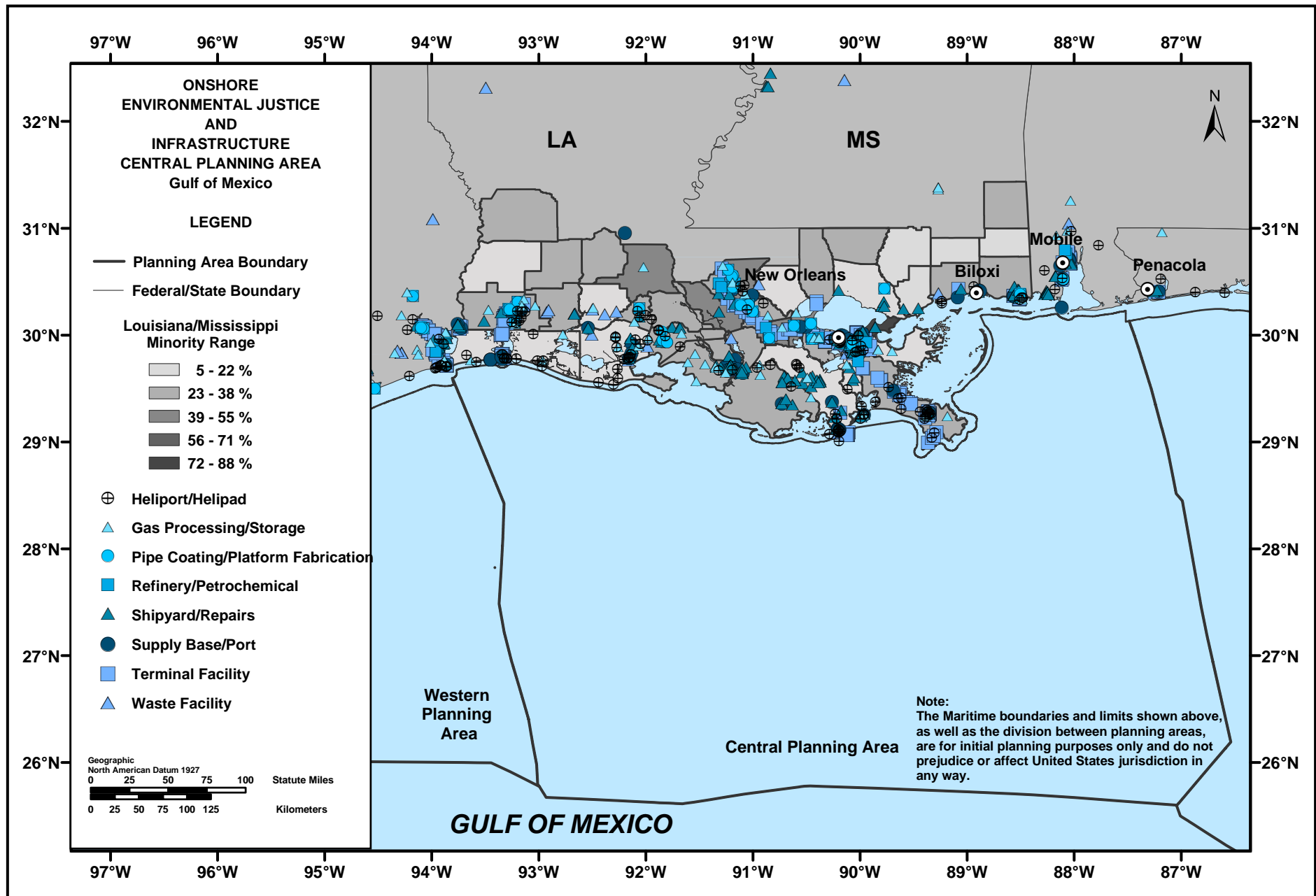


Figure III-18. Onshore Environmental Justice/Infrastructure Locations -- Central Gulf of Mexico Planning Area (Louisiana and Mississippi Minority Percentage Rates)