

**NLWJC - Kagan**

**DPC - Box 013 - Folder 018**

**DPC [Domestic Policy Council] -  
Organization and Budget**

# Withdrawal/Redaction Sheet

## Clinton Library

DOCUMENT NO. AND TYPE	SUBJECT/TITLE	DATE	RESTRICTION
001a. form	SSN (Partial) (1 page)	04/10/1997	P6/b(6)
001b. form	SSN (Partial) (1 page)	12/09/1997	P6/b(6)
001c. form	SSN (Partial) (1 page)	12/09/1997	P6/b(6)
001d. form	SSN (Partial) (1 page)	12/09/1997	P6/b(6)
001e. form	SSN (Partial) (1 page)	12/09/1997	P6/b(6)
002a. form	RE: Estimate of Alterations (1 page)	n.d.	b(2)
002b. diagram	RE: Office of Policy Development (3 pages)	n.d.	b(2)
003. diagram	RE: Domestic Policy Council (1 page)	n.d.	b(2)
004. email	From: Paul Weinstein To: Bruce Reed; RE: DPC Budget (partial) (1 page)	02/03/1997	P6/b(6)

**COLLECTION:**

Clinton Presidential Records  
 Domestic Policy Council  
 Elena Kagan  
 OA/Box Number: 14359

**FOLDER TITLE:**

DPC [Domestic Policy Council] - Organization and Budget

2009-1006-F  
db1535

### RESTRICTION CODES

Presidential Records Act - [44 U.S.C. 2204(a)]

- P1 National Security Classified Information [(a)(1) of the PRA]
- P2 Relating to the appointment to Federal office [(a)(2) of the PRA]
- P3 Release would violate a Federal statute [(a)(3) of the PRA]
- P4 Release would disclose trade secrets or confidential commercial or financial information [(a)(4) of the PRA]
- P5 Release would disclose confidential advice between the President and his advisors, or between such advisors [(a)(5) of the PRA]
- P6 Release would constitute a clearly unwarranted invasion of personal privacy [(a)(6) of the PRA]

C. Closed in accordance with restrictions contained in donor's deed of gift.

PRM. Personal record misfile defined in accordance with 44 U.S.C. 2201(3).

RR. Document will be reviewed upon request.

Freedom of Information Act - [5 U.S.C. 552(b)]

- b(1) National security classified information [(b)(1) of the FOIA]
- b(2) Release would disclose internal personnel rules and practices of an agency [(b)(2) of the FOIA]
- b(3) Release would violate a Federal statute [(b)(3) of the FOIA]
- b(4) Release would disclose trade secrets or confidential or financial information [(b)(4) of the FOIA]
- b(6) Release would constitute a clearly unwarranted invasion of personal privacy [(b)(6) of the FOIA]
- b(7) Release would disclose information compiled for law enforcement purposes [(b)(7) of the FOIA]
- b(8) Release would disclose information concerning the regulation of financial institutions [(b)(8) of the FOIA]
- b(9) Release would disclose geological or geophysical information concerning wells [(b)(9) of the FOIA]

**DRAFT****DRAFT****Domestic Policy Council Staff/Issue List**

<b>Issue Area</b>	<b>Staffer</b>	<b>Phone</b>	<b>Fax</b>	<b>Room Number</b>
AIDS	Sandy Thurman	632-1090	632-1096	750 17th Street
Adoption	Jen Klein Nicole Rabner	6-2599 6-7263	6-2878 6-2878	WW 2FL WW 2FL
Agriculture/ Rural Development	Carl Whillock	720-2406	720-9286	1400 Independ- ence Ave., SW, Room 216 Administration Building
Budget	Cynthia Rice	6-2846	6-7431	212R OEOB
Choice	Elena Kagan	6-5584	6-2878	WW 2FL
Children & Families	Jen Klein Nicole Rabner	6-2599 6-7263	6-2878 6-2878	WW 2FL WW 2FL
Civil Rights	Elena Kagan	6-5584	6-2878	WW 2FL
Communications/ Scheduling/Events	Christa Robinson	6-5165	6-7431	207 OEOB
Consumer Issues	Elizabeth Drye	6-5573	6-7431	210 OEOB
Crime	Jose Cerda Leanne Shimabukuro	6-5568 6-5574	6-7028 6-7028	224R OEOB 224L OEOB
<i>Prince</i> Community Empowerment/ Housing	Jose Cerda Leanne Shimabukuro	6-5568 6-5574	6-7028 6-7028	224R OEOB 224L OEOB
Disabilities	Diana Fortuna	6-5570	6-7431	212L OEOB
Drugs	Jose Cerda Leanne Shimabukuro	6-5568 6-5574	6-7028 6-7028	224R OEOB 224L OEOB
Education & Training	Mike Cohen Bill Kincaid	6-5575 6-2857	6-5581 6-7028	218L OEOB 220 OEOB
Environment	Paul Weinstein	6-5577	6-5581	214 OEOB
Health Care	Chris Jennings Jeanne Lambrew Sarah Bianchi	6-5560 6-5377 6-5585	6-5557 6-7431 6-5557	216R OEOB 209 OEOB 216 OEOB
Immigration	Jose Cerda Leanne Shimabukuro	6-5568 6-5574	6-7028 6-7028	224R OEOB 224L OEOB

Labor	Elena Kagan	6-5584	6-2878	WW 2FL
National Service	Diana Fortuna	6-5570	6-7431	212L OEOB
Policy Planning	Tom Freedman	6-6597	6-7431	213 OEOB
	Mark Mazur	5-5147	5-6853	318 OEOB
	Mary Smith	6-2216	6-7431	213 ½ OEOB
Political/Government Reform	Paul Weinstein	6-5577	6-5581	214 OEOB
Product Liability	Elena Kagan	6-5584	6-2878	WW 2FL
	Paul Weinstein	6-5577	6-5581	214 OEOB
Public Health	Elizabeth Drye	6-5573	6-7431	210 OEOB
FDA Reform	Chris Jennings	6-5560	6-5557	216R OEOB
	Jeanne Lambrew	6-5377	6-7431	209 OEOB
	Sarah Bianchi	6-5585	6-5557	216 OEOB
Tax Issues	Mark Mazur	5-5147	5-6853	318 OEOB
Tobacco	Elizabeth Drye	6-5573	6-7431	210 OEOB
Welfare Reform	Cynthia Rice	6-2846	6-7431	212R OEOB
	Diana Fortuna	6-5570	6-7431	212L OEOB

February 25, 1998

MEMORANDUM FOR NEC DEPUTIES

FROM: SALLY KATZEN

SUBJECT: WORKING GROUPS

Attached is a revised draft of the inter-agency working groups that we have discussed, organized to some extent along common themes. I've met with Elena, so this reflects the DPC's input as well.

There will be an NEC principals meeting on Thursday; we might spend a little time Wednesday on the agenda.

See you at 1:00 p.m. Wednesday the 25th, Room 180.

Principals meeting - meet w/ Larry, then  
on his priorities for year.

Updates? on

electricity restructuring

bankruptcy reform

reg reform

NEXTEA

Talk to Sally -  
Superfund

## DRAFT

### Interagency Working Groups

**Community Empowerment: ACTIVE.** The latest incarnation, chaired by DPC and NEC, met twice in the fall in an effort to develop proposals for the FY 1999 budget. Current thinking is to focus on access to credit and capital, housing, CRA, fair lending, Brownfields, etc. NEC poc: Cecilia Rouse/Emil Parker

Participants: Virtually all Cabinet departments, plus CEA, CEQ, OMB, and GSA.

**Community and Defense Economic Adjustment: ACTIVE.** This group has worked on BRAC closing and defense downsizing issues. It has recently taken on the new initiative for helping trade-impacted communities, beginning with pilots in Roswell, NM and El Paso, TX. NEC poc: Dorothy Robyn

Participants: DOC (EDA)  
DOD  
DOL (ETA)  
DOT  
HUD  
USDA  
SBA  
EPA  
VA  
DOE  
NSC  
OMB (Commerce Branch, Labor Branch)  
OSTP

### Workers Issues: Employment and Training

1. **Workforce Policy: ACTIVE.** The group should consider "new" ideas on job training, reemployment, minimum wage, skills shortage/immigration (foreign workers).  
NEC poc: Cecilia Rouse

Participants: DOL (ETA, Policy, Congressional)  
Treasury (Economic policy)  
OMB (Labor Branch, Education Branch, PAD)  
CEA  
Commerce (Policy, Senior Advisor to Secretary)  
Education (Voc. & Adult Ed, Policy Planning & Innov., Research)  
WH OPL (Director)  
DPC

2. **GI Bill: ACTIVE.** This group meets periodically to strategize on the job training and education reform legislation currently moving through Congress. NEC poc: Anne Lewis

Participants: DOL (Congressional, ETA)  
Education (Voc. & Adult Ed., Congressional)  
OMB (Labor Branch, Education Branch)  
WH (Legislative Affairs)

3. **Unemployment Insurance (UI) Reform: SEMI-DORMANT.** This group hasn't met for a while, but it needs to consider one more issue regarding the Extended Benefit Triggers and how best to conduct a dialogue with interested parties on more comprehensive reform. This group should also be thinking about the Administration's position on long-term, comprehensive UI reform. NEC poc: Jon Orszag

Participants: DOL (ETA, UI, Congressional, Policy)  
Treasury (Economic policy and Tax policy)  
OMB (Labor Branch)  
Commerce  
CEA

4. **IT Worker Training: INTERMITTENT.** This group meets as needed to discuss ways in which government policy can help address the growing demand for workers with information technology skills. This group coordinated the Administration's participation in the January 1998 Convocation on America's IT Workforce. NEC poc: Tom Kalil.

Participants: DOC  
Education  
DOL  
NSF  
DOD  
OSTP

5. **Learning Anytime, Anywhere: ACTIVE.** This group meets as needed to develop Administration policy on distance learning opportunities, particularly for adult learners. Core In 1998, the group will focus on: the implementation of the President's Executive Memorandum on technology-based training; establishment of new programs at Education, DOL, and DOD; amendments to the Higher Education Act to expand financial aid to distance learners; and issuance of a "Notice of Inquiry" to stimulate discussion of some of the longer-term issues raised by distance learning. NEC poc: Tom Kalil

Participants: OMB  
Education  
DOL  
DOD  
OSTP  
DPC

## Workplace Issues: Employment

1. **Family & Medical Leave: ACTIVE.** This joint NEC/DPC group is working on expansion of FMLA. NEC poc: Anne Lewis

Participants: DOL (Wage & Hour, Policy, Congressional Affairs)  
Treasury (Economic Policy)  
OMB (Labor Branch)  
CEA  
WH (Legislative Affairs)  
SBA (Office of Advocacy)  
DOC (Policy)

2. **Equal Pay: ACTIVE.** This joint NEC/DPC group is just beginning to strategize on how to address discrimination against women in wages and employment. NEC poc: Anne Lewis/Cecilia Rouse

Participants: DOL (OFCCP)  
EEOC (Counsel, Legislative)  
CEA  
DPC  
OMB (Labor Branch)

3. **Comp Time: INTERMITTENT.** This joint NEC/DPC group is considering the merits of additional increases in the minimum wage. NEC poc: Anne Lewis

Participants: DOL (Wage & Hour, Policy, Congressional Affairs)  
Treasury (Economic Policy)  
OMB (Labor Branch)  
DOC (Policy)  
CEA  
WH (Legislative Affairs)  
COS

4. **Pensions: ACTIVE.** Participants include DOL, PBGC, and Treasury as well as OMB, Commerce and CEA. Each of the Administration's pension legislative proposals (the Retirement Protection Act of 1994, the RSSA of 1996, the 1998 package just announced) was developed by the group; it also considers pending bills. NEC poc: Emil Parker

Participants: DOC (Economics and Statistics Administration)  
DOL (Pension and Welfare Benefits Administration, Leg Office)  
Pension Benefit Guaranty Corporation (various offices)  
Treasury (Tax Policy)  
OMB (Labor Branch and OIRA)  
CEA



## Education Issues

Note: DPC chairs an education strategy meeting every Monday at 4:30, with NEC, OMB, and the Department of Education. DPC also sponsors working groups on other issues including Education Opportunity Zones and Class Size.

1. **Student Loans: ACTIVE.** This group works on legislative issues relating to student loans, including controversy over a change in the interest rate scheduled for July 1 and the Administration's reauthorization proposals. (Management issues are handled through the Student Aid Modernization Board, chaired by Education and involving OMB, Treasury, NEC and others). NEC poc: Bob Shireman

Participants: Education  
Treasury (Economic Policy)  
OMB  
CEA

2. **School Construction: ACTIVE.** Work out details of the Administration's school modernization proposal, and plan coalition-building and legislative strategy. Representatives from Capitol Hill and constituency groups are sometimes invited to meetings. NEC poc: Bob Shireman

Participants: DPC  
Education  
Treasury (Tax Policy)  
OMB

3. **High Hopes College-School Partnerships: INTERMITTENT.** Developing details and strategy on this mentoring-for-college initiative focused on high-poverty middle schools. NEC poc: Bob Shireman

Participants: DPC  
Education  
OMB  
National Service  
Labor

4. **America Reads: INTERMITTENT.** Ensuring that every child can read well and independently by the end of third grade, by providing after-school tutoring, family literacy services, and improving teacher skills. Includes the work-study challenge (colleges using work-study participants to tutor), AmeriCorps projects, the Read\*Write\*Now effort, and legislation. NEC poc: Bob Shireman

Participants: DPC  
Education  
OMB  
National Service

5. **Hispanic Education: INTERMITTENT.** Developed an investment package for the FY 99 Budget, legislative proposals as well as non-legislative program improvements. Will meet as needed on implementation and strategy issues. NEC poc: Bob Shireman

Participants: DPC  
Education  
OMB

Sometimes White House Initiative on Educational Excellence for Hispanic Education, OPL, OLA, OIA, Labor, HHS, and others.

### Health Issues

1. **Health Policy Update: ACTIVE.** This joint DPC/NEC group has a weekly meeting with HHS, OMB, Treasury, and Labor on what's happening in health. DPC poc: Chris Jennings.
2. **Children's Health Implementation: ACTIVE.** This joint DPC/NEC group meets weekly with HHS, OMB, Treasury to review implementation activities for the Children's Health Insurance Program. DPC poc: Chris Jennings.

### Environmental Issues

1. **Electricity: ACTIVE.** Focus is on legislative proposals for restructuring.  
NEC contact: Peter Orszag

Participants: DOE  
EPA  
CEA  
Treasury (Economic Policy)  
CEQ

2. **Climate Change: ACTIVE.** Todd Stern was designated to coordinate overall efforts, with NEC and CEQ coordinating for major policy issues in their areas. Group is all-inclusive. NEC point of contact is Peter Orszag

### Transportation/Infrastructure Issues:

1. **NEXTEA/ISTEA: ACTIVE.** Focus is on the Reauthorization of the Intermodal Surface Transportation Efficiency Act. This group has been following the legislative activity and formulating/coordinating Administration policies. NEC poc: Dorothy Robyn

Participants: DOT  
EPA  
DOL (Policy)  
HHS

HUD  
OMB (Transportation Branch)  
CEQ  
DPC  
Leg. Affairs  
OPL  
IGA  
OSTP  
OVP  
CEA

2. **Motor Vehicle: ACTIVE.** Focus is on automobiles and the environment, trade issues and R&D. This groups meets every month or so. NEC poc: Dorothy Robyn

Participants: DOT  
EPA  
DOC  
DOL  
Treasury  
USTR  
CEQ  
State  
OSTP

3. **Aviation & Aerospace. ACTIVE.** This new group will focus on a variety of domestic and internation issues relating to airlines, aviation safety, and aerospace competitiveness. NEC poc: Dorothy Robyn.

Participants: DOC (ITA)  
USTR  
DOL (International)  
DOT  
DOD  
NASA  
State  
DOJ  
OMB (International Branch)

4. **International Civil Aviation Organization (ICAO) and Climate Change: ACTIVE.** NSC and NEC co-chair this new group. Focus is on International Aviation. NEC poc: Dorothy Robyn.

Participants: FAA  
EPA  
NASA  
DOE  
DOC (Office of Sec'y, ITA)  
DOD (Air Force, Joint Staff)  
State (EB)  
CEQ

NSC

**Technology & Telecommunications Issues**

1. **Telecommunications Policy: ACTIVE.** This group meets weekly to discuss developments in domestic and international telecommunications policy. NEC poc: Tom Kalil and Dorothy Robyn.

Participants: OVP  
CEA  
OMB  
USTR  
DOC/NTIA  
State  
DOJ (Antitrust)  
USDA (Rural Utility Service)  
Treasury

2. **Technology Policy: ACTIVE.** This group meets weekly to discuss possible initiatives and events in the area of technology policy. Although this group is limited to White House participants, ideas and suggestions from agencies are welcome. NEC poc: Tom Kalil.

Participants: OVP  
OMB  
COS  
OSTP

3. **Advanced Lithography: INTERMITTENT.** This group meets as needed to discuss policy on advanced lithography - one of the key pieces of technology needed to make semiconductors (and thus all computers and electronics) "smaller, faster, and cheaper." NEC poc: Tom Kalil.

Participants: DOC (BXA, Technology Administration)  
DOE (Defense Programs)  
DOD  
OSTP

4. **INTELSAT: ACTIVE.** This group meets regularly to develop Administration position on restructuring of this international satellite organization. NEC poc: Dorothy Robyn.

Participants: DOC (NTIA)  
FCC  
DOJ (Antitrust)  
Treasury  
State (EB)  
CIA  
DOD  
USTR  
CEA  
OVP

OMB  
OSTP  
NSC

5. **Intellectual Property Rights/PTO Bill: ACTIVE.** NEC currently convenes this group via conference call to develop Administration positions on legislation to restructure Patent & Trademark Organization and reform patent policy; sit-down meetings tend to be convened by OMB Deputy for Management. NEC poc: Dorothy Robyn

Participants: DOC  
PTO  
DOJ  
OMB  
OVP  
NGR  
Leg Affairs  
OSTP

### Regulatory and Legal Area

1. **Bankruptcy Reform: ACTIVE.** Developing Administration proposals on possible reforms to the personal bankruptcy system. NEC poc: Peter Orszag

Participants: Justice (Associate Attorney General's office)  
Treasury (Economic Policy, Tax Policy, Office of Thrift Supervision, and Comptroller of the Currency)  
OMB (Economic Policy)  
WH Counsel  
USDA (General Counsel)  
CEA  
Commerce (I'll check on precise institutional affiliation)  
WHOPL  
Consumer Products Safety Comm.

2. **Product Liability: ACTIVE..** Focus is on legislative activity. NEC poc: Sally Katzen

Participants: DOJ  
DOC  
SBA  
OMB  
Treasury  
White House Counsel  
DPC

3. **Reg Reform: ACTIVE.** Includes all agencies. Focus is on legislative activity. NEC poc: Sally Katzen

4. **Procurement Reform: INTERMITTENT.** Meets to resolve interagency conflicts that arise from different Administration policies. NEC poc Dorothy Robyn.

Participants: DOD  
GSA  
DOL  
SBA  
OMB (OFPP)  
DOT  
NASA  
DOE  
OVP

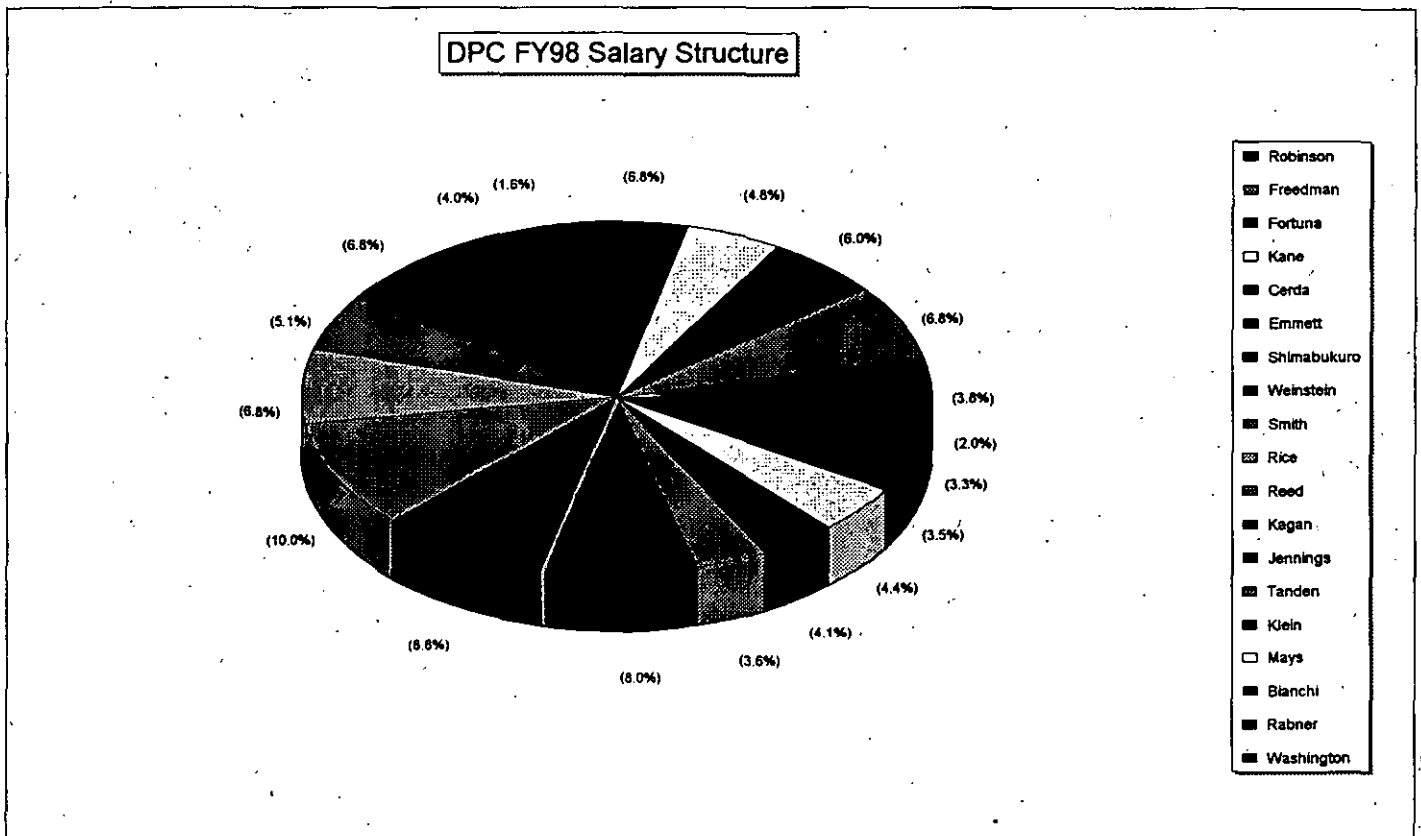
5. **Child Labor: ACTIVE.** The group that developed the budget initiative included: State, Treasury (Customs), Education, DOL, OMB, NSC, and sometimes USTR and DOC. The group hasn't met since we developed the budget initiative. We are going to reconvene a slightly different group to work on a new set of child labor issues. NEC poc: Anne Lewis

Participants: NSC (Human Rights)  
DOL (ILPB)  
DOS (Human Rights)  
Treasury (Customs, Enforcement, Legislative)  
USTR

6. **Farm Bill: DORMANT.** No longer needed, unless we want to use a group to consider the milk marketing issues. NEC poc: Dorothy Robyn.

Participants: USDA  
EPA  
AID  
Treasury  
DOC  
HHS  
State  
CEA  
OMB  
DPC

DPC FY 98	Salaries	Amt. Raise	DPC FY 97	Salaries	WH FY 98	Salaries	Amt Raise	WH FY97	Salaries
Robinson	47,000	2,000	Robinson	45,000	Reed	125,000		Reed	125,000
Freedman	85,000		Prince Slot	85,000	Kagan	110,000		Kagan	110,000
Fortuna	75,000		Fortuna	75,000	Jennings	99,500		Jennings	99,500
Kane	60,000		Drye Slot	75,000	Tanden	45,000		Freedman	85,000
Cerda	85,000		Cerda	85,000	Klein	51,000		Rice	85,000
Emmett	30,000	5,000	Emmett	25,000	Mays	55,000	5,000	Mays	50,000
Shimabukuro	50,000		Shimabukuro	50,000	Bianchi	44,000	4,000	Bianchi	40,000
EXPIRED	0		Mazur	24,782	Rabner	41,000	6,000	Rabner	35,000
Masten	47,000		Masten	47,000	Washington	24,500		Washington	24,500
Weinstein	85,000		Weinstein	85,000	Thurman	115,000		Thurman	115,000
Smith	64,000	4,000	Smith	60,000	Magaziner	110,000		Magaziner	110,000
Rice	85,000		Klein	80,000	Summers	79,000		Summers	79,000
					O'Mary	24,000		Greenstein	25,000
Totals	713,000	11,000	Totals	738,782	Totals	923,000	15,000	Totals	983,000
FY98 DPC	\$713,000	6,800			FY98 WH	923,000			



Bonus -  
I actually do have some  
views about this.  
Ethen

# Withdrawal/Redaction Marker

## Clinton Library

DOCUMENT NO. AND TYPE	SUBJECT/TITLE	DATE	RESTRICTION
001a. form	SSN (Partial) (1 page)	04/10/1997	P6/b(6)

### COLLECTION:

Clinton Presidential Records  
Domestic Policy Council  
Elena Kagan  
OA/Box Number: 14359

### FOLDER TITLE:

DPC [Domestic Policy Council] - Organization and Budget

2009-1006-F  
db1535

### RESTRICTION CODES

Presidential Records Act - [44 U.S.C. 2204(a)]

- P1 National Security Classified Information [(a)(1) of the PRA]
- P2 Relating to the appointment to Federal office [(a)(2) of the PRA]
- P3 Release would violate a Federal statute [(a)(3) of the PRA]
- P4 Release would disclose trade secrets or confidential commercial or financial information [(a)(4) of the PRA]
- P5 Release would disclose confidential advice between the President and his advisors, or between such advisors [(a)(5) of the PRA]
- P6 Release would constitute a clearly unwarranted invasion of personal privacy [(a)(6) of the PRA]

C. Closed in accordance with restrictions contained in donor's deed of gift.

PRM. Personal record misfile defined in accordance with 44 U.S.C. 2201(3).

RR. Document will be reviewed upon request.

Freedom of Information Act - [5 U.S.C. 552(b)]

- b(1) National security classified information [(b)(1) of the FOIA]
- b(2) Release would disclose internal personnel rules and practices of an agency [(b)(2) of the FOIA]
- b(3) Release would violate a Federal statute [(b)(3) of the FOIA]
- b(4) Release would disclose trade secrets or confidential or financial information [(b)(4) of the FOIA]
- b(6) Release would constitute a clearly unwarranted invasion of personal privacy [(b)(6) of the FOIA]
- b(7) Release would disclose information compiled for law enforcement purposes [(b)(7) of the FOIA]
- b(8) Release would disclose information concerning the regulation of financial institutions [(b)(8) of the FOIA]
- b(9) Release would disclose geological or geophysical information concerning wells [(b)(9) of the FOIA]



**The White House**  
**Change in Employee Status**  
**To be completed by requesting office**

**Section I: Complete all data**

Name of Employee: Robinson Christa  
Last First Middle

Social Security Number: P6/(b)(6)

Office/Department/Agency: DPC/OPD/EOP

**Section II: Check the Appropriate Box(es):**

- Reassignment within the White House Office (complete Section III below)
- Change in title
- Change in salary (complete Section III below)
- Change in work schedule (complete Section III below)
- Extension of temporary appointment (enter new ending date below)
- Change in category (complete Section III below)
- Other: \_\_\_\_\_

**Section III: Complete all sections as appropriate**

Bruce Reed, Assistant to the  
 President for Domestic Policy

New Position Title: \_\_\_\_\_ Requested by: \_\_\_\_\_


Current Salary: \$42,000 New Salary: \$45,000

Proposed effective date of change: April 13, 1997 Ending date: \_\_\_\_\_

Work Schedule (circle new schedule)      Full Time      Part Time      Intermittent

Category (circle new category)      Permanent      Temporary      New ending date \_\_\_\_\_

**Approvals:**

Bruce Reed   
 Assistant to the President      Office of Management & Administration

April 10, 1997  
 Date      Date

Upon approval or disapproval please return to:

Paul Weinstein, COS DPC      214      6-5577  
 Name      Room      Extension

# Withdrawal/Redaction Marker

## Clinton Library

DOCUMENT NO. AND TYPE	SUBJECT/TITLE	DATE	RESTRICTION
001b. form	SSN (Partial) (1 page)	12/09/1997	P6/b(6)

### COLLECTION:

Clinton Presidential Records  
Domestic Policy Council  
Elena Kagan  
OA/Box Number: 14359

### FOLDER TITLE:

DPC [Domestic Policy Council] - Organization and Budget

2009-1006-F  
db1535

### RESTRICTION CODES

#### Presidential Records Act - [44 U.S.C. 2204(a)]

- P1 National Security Classified Information [(a)(1) of the PRA]
- P2 Relating to the appointment to Federal office [(a)(2) of the PRA]
- P3 Release would violate a Federal statute [(a)(3) of the PRA]
- P4 Release would disclose trade secrets or confidential commercial or financial information [(a)(4) of the PRA]
- P5 Release would disclose confidential advice between the President and his advisors, or between such advisors [(a)(5) of the PRA]
- P6 Release would constitute a clearly unwarranted invasion of personal privacy [(a)(6) of the PRA]

C. Closed in accordance with restrictions contained in donor's deed of gift.

PRM. Personal record misfile defined in accordance with 44 U.S.C. 2201(3).

RR. Document will be reviewed upon request.

#### Freedom of Information Act - [5 U.S.C. 552(b)]

- b(1) National security classified information [(b)(1) of the FOIA]
- b(2) Release would disclose internal personnel rules and practices of an agency [(b)(2) of the FOIA]
- b(3) Release would violate a Federal statute [(b)(3) of the FOIA]
- b(4) Release would disclose trade secrets or confidential or financial information [(b)(4) of the FOIA]
- b(6) Release would constitute a clearly unwarranted invasion of personal privacy [(b)(6) of the FOIA]
- b(7) Release would disclose information compiled for law enforcement purposes [(b)(7) of the FOIA]
- b(8) Release would disclose information concerning the regulation of financial institutions [(b)(8) of the FOIA]
- b(9) Release would disclose geological or geophysical information concerning wells [(b)(9) of the FOIA]

**The White House**  
**Change in Employee Status**  
**To be completed by requesting office**

**Section I: Complete all data**

Name of Employee: Bianchi Sarah  
Last First Middle

Social Security Number: P6/(b)(6)

Office/Department/Agency: LPC/White House Office

**Section II: Check the Appropriate Box(es):**

- Reassignment within the White House Office (complete Section III below)
- Change in title
- Change in salary (complete Section III below)
- Change in work schedule (complete Section III below)
- Extension of temporary appointment (enter new ending date below)
- Change in category (complete Section III below)
- Other: \_\_\_\_\_

**Section III: Complete all sections as appropriate**

New Position Title: \_\_\_\_\_ Requested by: Bruce Reed, Assistant to the President for Domestic Policy

Current Salary: \$40,000 New Salary: \$44,000

Proposed effective date of change: December 15, 1997 Ending date: \_\_\_\_\_

Work Schedule (circle new schedule)      Full Time      Part Time      Intermittent

Category (circle new category)      Permanent      Temporary      New ending date \_\_\_\_\_

**Approvals:**

Bruce Reed  
Assistant to the President      Office of Management & Administration  
December 9, 1997  
Date      Date

Upon approval or disapproval please return to:

Paul Weinstein      214      6-5577  
Name      Room      Extension

# Withdrawal/Redaction Marker Clinton Library

DOCUMENT NO. AND TYPE	SUBJECT/TITLE	DATE	RESTRICTION
001c. form	SSN (Partial) (1 page)	12/09/1997	P6/b(6)

## COLLECTION:

Clinton Presidential Records  
Domestic Policy Council  
Elena Kagan  
OA/Box Number: 14359

## FOLDER TITLE:

DPC [Domestic Policy Council] - Organization and Budget

2009-1006-F  
db1535

## RESTRICTION CODES

### Presidential Records Act - [44 U.S.C. 2204(a)]

- P1 National Security Classified Information [(a)(1) of the PRA]
- P2 Relating to the appointment to Federal office [(a)(2) of the PRA]
- P3 Release would violate a Federal statute [(a)(3) of the PRA]
- P4 Release would disclose trade secrets or confidential commercial or financial information [(a)(4) of the PRA]
- P5 Release would disclose confidential advice between the President and his advisors, or between such advisors [(a)(5) of the PRA]
- P6 Release would constitute a clearly unwarranted invasion of personal privacy [(a)(6) of the PRA]

C. Closed in accordance with restrictions contained in donor's deed of gift.

PRM. Personal record misfile defined in accordance with 44 U.S.C. 2201(3).

RR. Document will be reviewed upon request.

### Freedom of Information Act - [5 U.S.C. 552(b)]

- b(1) National security classified information [(b)(1) of the FOIA]
- b(2) Release would disclose internal personnel rules and practices of an agency [(b)(2) of the FOIA]
- b(3) Release would violate a Federal statute [(b)(3) of the FOIA]
- b(4) Release would disclose trade secrets or confidential or financial information [(b)(4) of the FOIA]
- b(6) Release would constitute a clearly unwarranted invasion of personal privacy [(b)(6) of the FOIA]
- b(7) Release would disclose information compiled for law enforcement purposes [(b)(7) of the FOIA]
- b(8) Release would disclose information concerning the regulation of financial institutions [(b)(8) of the FOIA]
- b(9) Release would disclose geological or geophysical information concerning wells [(b)(9) of the FOIA]

**The White House**  
**Change in Employee Status**  
**To be completed by requesting office**

**Section I: Complete all data**

Name of Employee: Mays Cathy  
Last First Middle  
Social Security Number: P6/(b)(6)  
Office/Department/Agency: DPC/White House Office

**Section II: Check the Appropriate Box(es):**

- Reassignment within the White House Office (complete Section III below)
- Change in title
- Change in salary (complete Section III below)
- Change in work schedule (complete Section III below)
- Extension of temporary appointment (enter new ending date below)
- Change in category (complete Section III below)
- Other: \_\_\_\_\_

**Section III: Complete all sections as appropriate**

New Position Title: \_\_\_\_\_ Requested by: Bruce Reed, Assistant to the President  
Current Salary: \$50,000 New Salary: \$55,000  
Proposed effective date of change: December 15, 1997 Ending date: \_\_\_\_\_  
Work Schedule (circle new schedule) Full Time Part Time Intermittent  
Category (circle new category) Permanent Temporary New ending date \_\_\_\_\_

**Approvals:**

Bruce Reed  
Assistant to the President Office of Management & Administration  
December 9, 1997  
Date Date

Upon approval or disapproval please return to:  
Paul Weinstein 214 6-5577  
Name Room Extension

# Withdrawal/Redaction Marker

## Clinton Library

DOCUMENT NO. AND TYPE	SUBJECT/TITLE	DATE	RESTRICTION
001d. form	SSN (Partial) (1 page)	12/09/1997	P6/b(6)

### COLLECTION:

Clinton Presidential Records  
Domestic Policy Council  
Elena Kagan  
OA/Box Number: 14359

### FOLDER TITLE:

DPC [Domestic Policy Council] - Organization and Budget

2009-1006-F  
db1535

### RESTRICTION CODES

#### Presidential Records Act - [44 U.S.C. 2204(a)]

- P1 National Security Classified Information [(a)(1) of the PRA]
- P2 Relating to the appointment to Federal office [(a)(2) of the PRA]
- P3 Release would violate a Federal statute [(a)(3) of the PRA]
- P4 Release would disclose trade secrets or confidential commercial or financial information [(a)(4) of the PRA]
- P5 Release would disclose confidential advice between the President and his advisors, or between such advisors [(a)(5) of the PRA]
- P6 Release would constitute a clearly unwarranted invasion of personal privacy [(a)(6) of the PRA]

C. Closed in accordance with restrictions contained in donor's deed of gift.

PRM. Personal record misfile defined in accordance with 44 U.S.C. 2201(3).

RR. Document will be reviewed upon request.

#### Freedom of Information Act - [5 U.S.C. 552(b)]

- b(1) National security classified information [(b)(1) of the FOIA]
- b(2) Release would disclose internal personnel rules and practices of an agency [(b)(2) of the FOIA]
- b(3) Release would violate a Federal statute [(b)(3) of the FOIA]
- b(4) Release would disclose trade secrets or confidential or financial information [(b)(4) of the FOIA]
- b(6) Release would constitute a clearly unwarranted invasion of personal privacy [(b)(6) of the FOIA]
- b(7) Release would disclose information compiled for law enforcement purposes [(b)(7) of the FOIA]
- b(8) Release would disclose information concerning the regulation of financial institutions [(b)(8) of the FOIA]
- b(9) Release would disclose geological or geophysical information concerning wells [(b)(9) of the FOIA]

**The White House**  
**Change in Employee Status**  
**To be completed by requesting office**

**Section I: Complete all data.**

Name of Employee: Emmett Laura  
Last First Middle  
Social Security Number: P6/(b)(6)  
Office/Department/Agency: DPC/OPD/EOP

**Section II: Check the Appropriate Box(es):**

- Reassignment within the White House Office (complete Section III below)
- Change in title
- Change in salary (complete Section III below)
- Change in work schedule (complete Section III below)
- Extension of temporary appointment (enter new ending date below)
- Change in category (complete Section III below)
- Other: \_\_\_\_\_

**Section III: Complete all sections as appropriate**

New Position Title: \_\_\_\_\_ Requested by: Bruce Reed, Assistant to the President for Domestic Policy  
Current Salary: \$25,000 New Salary: \$30,000  
Proposed effective date of change: December 15, 1997 Ending date: \_\_\_\_\_  
Work Schedule (circle new schedule) Full Time Part Time Intermittent  
Category (circle new category) Permanent Temporary New ending date \_\_\_\_\_

**Approvals:**

Bruce Reed  
Assistant to the President Office of Management & Administration  
December 9, 1997  
Date Date

Upon approval or disapproval please return to:

Paul J. Weinstein Jr. 214 6-5577  
Name Room Extension

# Withdrawal/Redaction Marker Clinton Library

DOCUMENT NO. AND TYPE	SUBJECT/TITLE	DATE	RESTRICTION
001e. form	SSN (Partial) (1 page)	12/09/1997	P6/b(6)

## COLLECTION:

Clinton Presidential Records  
Domestic Policy Council  
Elena Kagan  
OA/Box Number: 14359

## FOLDER TITLE:

DPC [Domestic Policy Council] - Organization and Budget

2009-1006-F  
db1535

## RESTRICTION CODES

### Presidential Records Act - [44 U.S.C. 2204(a)]

- P1 National Security Classified Information [(a)(1) of the PRA]
- P2 Relating to the appointment to Federal office [(a)(2) of the PRA]
- P3 Release would violate a Federal statute [(a)(3) of the PRA]
- P4 Release would disclose trade secrets or confidential commercial or financial information [(a)(4) of the PRA]
- P5 Release would disclose confidential advice between the President and his advisors, or between such advisors [(a)(5) of the PRA]
- P6 Release would constitute a clearly unwarranted invasion of personal privacy [(a)(6) of the PRA]

C. Closed in accordance with restrictions contained in donor's deed of gift.

PRM. Personal record misfile defined in accordance with 44 U.S.C. 2201(3).

RR. Document will be reviewed upon request.

### Freedom of Information Act - [5 U.S.C. 552(b)]

- b(1) National security classified information [(b)(1) of the FOIA]
- b(2) Release would disclose internal personnel rules and practices of an agency [(b)(2) of the FOIA]
- b(3) Release would violate a Federal statute [(b)(3) of the FOIA]
- b(4) Release would disclose trade secrets or confidential or financial information [(b)(4) of the FOIA]
- b(6) Release would constitute a clearly unwarranted invasion of personal privacy [(b)(6) of the FOIA]
- b(7) Release would disclose information compiled for law enforcement purposes [(b)(7) of the FOIA]
- b(8) Release would disclose information concerning the regulation of financial institutions [(b)(8) of the FOIA]
- b(9) Release would disclose geological or geophysical information concerning wells [(b)(9) of the FOIA]



**The White House**  
**Change in Employee Status**  
**To be completed by requesting office**

**Section I: Complete all data**

Name of Employee: Robinson Christa  
Last First Middle

Social Security Number: P6/(b)(6)

Office/Department/Agency: DPC/OPD/EOP

**Section II: Check the Appropriate Box(es):**

- Reassignment within the White House Office (complete Section III below)
- Change in title
- Change in salary (complete Section III below)
- Change in work schedule (complete Section III below)
- Extension of temporary appointment (enter new ending date below)
- Change in category (complete Section III below)
- Other: \_\_\_\_\_

**Section III: Complete all sections as appropriate**

New Position Title: \_\_\_\_\_ Requested by: Bruce Reed, Assistant to the President for Domestic Policy

Current Salary: \$45,000 New Salary: \$47,000

Proposed effective date of change: December 15, 1997 Ending date: \_\_\_\_\_

Work Schedule (circle new schedule) Full Time Part Time Intermittent

Category (circle new category) Permanent Temporary New ending date \_\_\_\_\_

**Approvals:**

Bruce Reed  
Assistant to the President Office of Management & Administration  
December 9, 1997  
Date Date

Upon approval or disapproval please return to:

Paul Weinstein 214 6-5577  
Name Room Extension



Paul J. Weinstein Jr.

10/24/97 07:24:50 PM

Record Type: Record

To: Elena Kagan/OPD/EOP

cc:

Subject: DPC Diversity

**Female Staffers**

- 1. Kagan
- 2. Robinson
- 3. Fernandes
- 4. Emmett
- 5. Mays
- 6. Washington
- 7. Balderston
- 8. Bianchi
- 9. Smith
- 10. Martin
- 11. Shimabukuro
- 12. Klein
- 13. Rabner
- 14. Rice
- 15. Fortuna
- 16. Kane

**Minorities**

- 1. Fernandes
- 2. Cerda
- 3. Shimabukuro
- 4. Smith
- 5. Martin
- 6. Washington

3 AAs  
 1 Hispanic  
 1 Asian  
 1 Native American  
 } mixed

**All Staff** (Includes Detailees, Staff on White Payroll, and DPC Payroll. This figure includes only those individuals who meet the following criteria: 1. Bruce can hire or fire [alone or in conjunction with someone else]. 2. They report directly to Bruce [alone or in conjunction with someone else]. 3. They work in the West Wing or OEOP. 4. They are on the Office of Policy Development Budget. Using these criteria, the following employees are eliminated: Magaziner, Masten, Thurman, Whillock, Byrne, Mande, Lambrew, and Summers.)

- 1. Reed
- 2. Kagan
- 3. Weinstein
- 4. Robinson
- 5. Mays

6. Emmett
7. Jennings
8. Bianchi
9. Rice
10. Fortuna
11. Kane
12. Cohen
13. Kincaid
14. Martin
15. Klein
16. Rabner
17. Cerda
18. Shimabukuro
19. Washington
20. Balderston
21. Freedman
22. Smith
23. Fernandes

out of  
6 23

**Open Slots**

1. Associate Director for Policy Planning and Public Health
2. Associate Director for Children's and Families (Neera Tanden)
3. Policy Assistant for Welfare Reform and Health Care Teams.

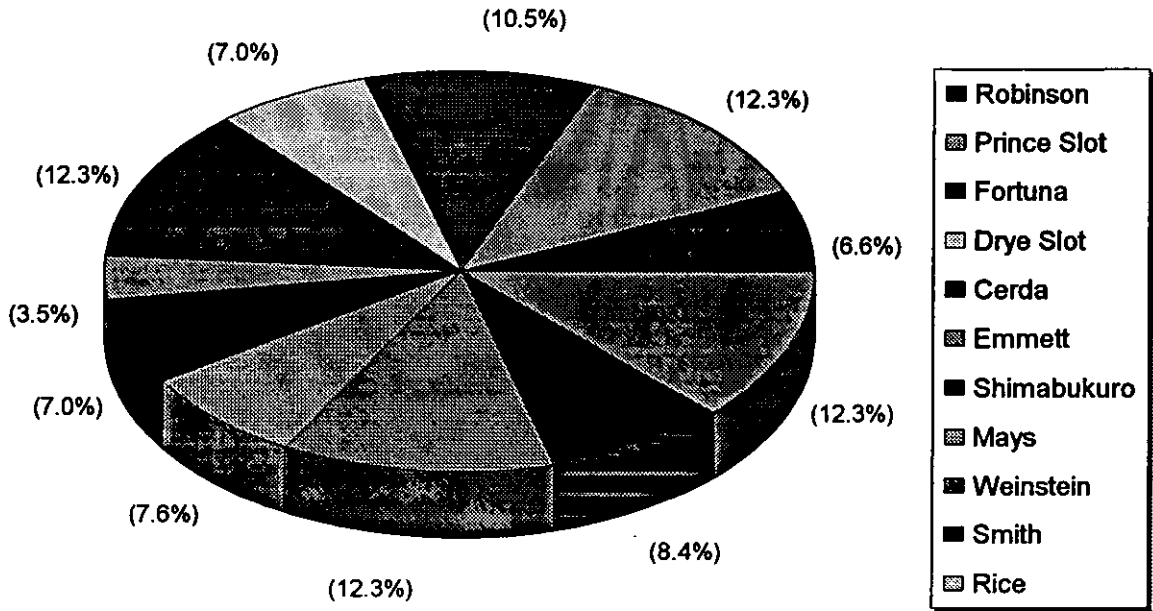
$$\begin{array}{r}
 260 \\
 \hline
 23 \overline{) 4.0000} \\
 \underline{46} \\
 140 \\
 \underline{138} \\
 20
 \end{array}$$

DPC - budget etc

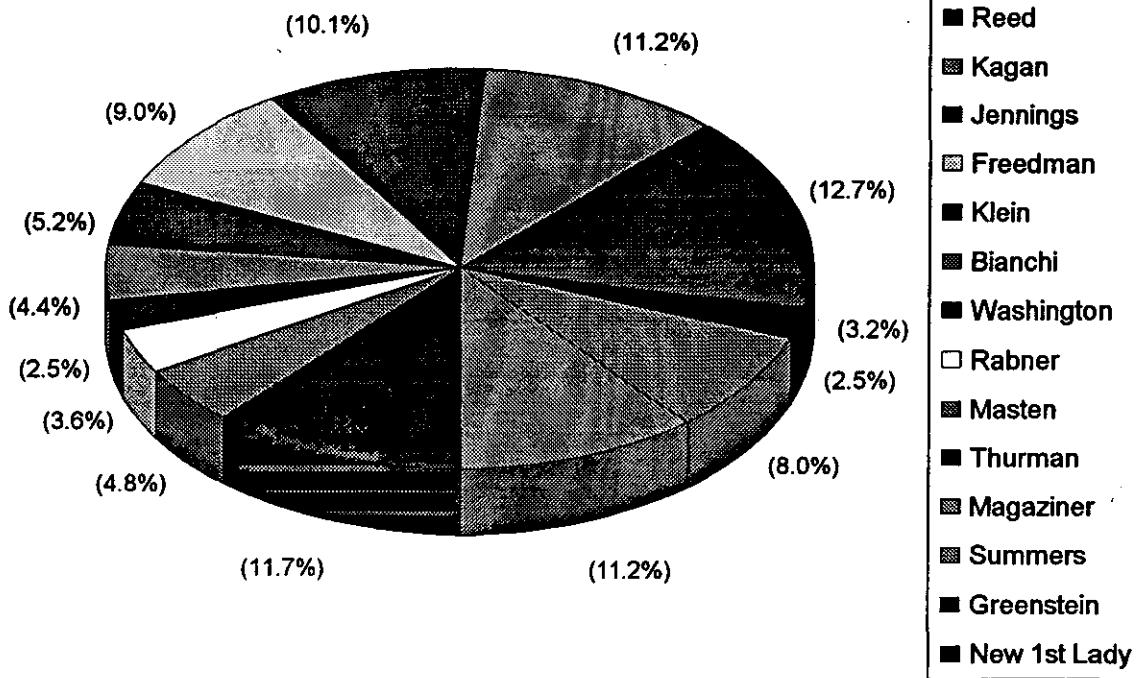
### DPC Salary Structure For FY98

DPC FY 98	Salaries	Amt. Raise	DPC FY 97	Salaries	WH FY 98	Salaries	Amt. Raise	WH FY97	Salaries
Robinson	47,000		Robinson	47,000	Reed	125,000		Reed	125,000
Prince Slot	88,000	3,000	Prince Slot	85,000	Kagan	110,000		Kagan	110,000
Fortuna	75,000		Fortuna	75,000	Jennings	99,500		Jennings	99,500
Drye Slot	50,000	(25,000)	Drye Slot	75,000	Freedman	88,000	3,000	Freedman	85,000
Cerda	88,000	3,000	Cerda	85,000	<i>Klein</i>	51,000	5,000	Rice	85,000
Emmett	25,000		Emmett	25,000	Bianchi	43,000	3,000	Mays	50,000
Shimabukuro	50,000		Shimabukuro	50,000	Washington	24,500		Bianchi	40,000
			Mazur	24,782	Rabner	35,000		Washington	24,500
Mays	54,000	4,000	Masten	47,000				Rabner	35,000
Weinstein	88,000	3,000	Weinstein	85,000	<i>Masten</i>	47,000			
Smith	60,000		Smith	60,000	Thurman	115,000		Thurman	115,000
Rice	88,000	3,000	Klein	80,000	Magaziner	110,000		Magaziner	110,000
					Summers	79,000		Summers	79,000
					Greenstein	25,000		Greenstein	25,000
					New 1st Lady	31,000			
<b>Totals</b>	<b>713,000</b>	<b>(9,000)</b>	<b>Totals</b>	<b>738,782</b>	<b>Totals</b>	<b>983,000</b>	<b>11000</b>	<b>Totals</b>	<b>983,000</b>
<b>FY98 DPC</b>	<b>\$713,000</b>				<b>FY98 WH</b>	<b>983,000</b>			

DPC Salary Structure FY98



WH Salary Structure FY98



July 7, 1997

July 7, 1997

Domestic Policy Council Staff/Issue List

Issue Area	Staffer	Phone	Fax	Room Number
AIDS	Sandy Thurman	632-1090	632-1096	750 17th Street
Adoption	Jen Klein Nicole Rabner	6-2599 6-7263	6-2878 6-2878	WW 2FL WW 2FL
Agriculture/ Rural Development	Carl Whillock	720-2406	720-9286	1400 Independence Ave., SW, Room 216 Administration Building
Budget	Cynthia Rice	6-2846	6-7431	212R OEOB
Choice	Elena Kagan	6-5584	6-2878	WW 2FL
Children & Families	Jen Klein Nicole Rabner	6-2599 6-7263	6-2878 6-2878	WW 2FL WW 2FL
Civil Rights	Elena Kagan	6-5584	6-2878	WW 2FL
Communications/ Scheduling/Events	Christa Robinson	6-5165	6-7431	207 OEOB
Consumer Issues	Elizabeth Drye	6-5573	6-7431	210 OEOB
Crime	Jose Cerda Leanne Shimabukuro	6-5568 6-5574	6-7028 6-7028	224R OEOB 224L OEOB
Community Empowerment/ Housing	Jose Cerda Leanne Shimabukuro	6-5568 6-5574	6-7028 6-7028	224R OEOB 224L OEOB
Disabilities	Diana Fortuna	6-5570	6-7431	212L OEOB
Drugs	Jose Cerda Leanne Shimabukuro	6-5568 6-5574	6-7028 6-7028	224R OEOB 224L OEOB
Education & Training	Mike Cohen Bill Kincaid Tanya Oubre	6-5575 6-2857 6-5228	6-5581 6-7028 6-5581	218L OEOB 220 OEOB 218ROEOB
Environment	Paul Weinstein	6-5577	6-5581	214 OEOB
Health Care	Chris Jennings Jeanne Lambrew Sarah Bianchi	6-5560 6-5377 6-5585	6-5557 6-7431 6-5557	216R OEOB 209 OEOB 216 OEOB
Immigration	Jose Cerda	6-5568	6-7028	224R OEOB

	Leanne Shimabukuro Steve Warnath	6-5574 5-5550	6-7028 5-5567	224L OEOB 736 Jackson Place
Labor	Elena Kagan	6-5584	6-2878	WW 2FL
National Service	Diana Fortuna	6-5570	6-7431	212L OEOB
Policy Planning	Tom Freedman Mary Smith Tanya Oubre Mark Mazur	6-6597 6-2216 6-5228 5-5147	6-7431 6-7431 6-5581 5-6853	213 OEOB 213 ½ OEOB 218ROEOB 318 OEOB
Political/Government Reform	Paul Weinstein	6-5577	6-5581	214 OEOB
Product Liability	Elena Kagan Paul Weinstein	6-5584 6-5577	6-2878 6-5581	WW 2FL 214 OEOB
Public Health	Elizabeth Drye	6-5573	6-7431	210 OEOB
FDA Reform	Chris Jennings Jeanne Lambrew Sarah Bianchi	6-5560 6-5377 6-5585	6-5557 6-7431 6-5557	216R OEOB 209 OEOB 216 OEOB
Tax Issues	Mark Mazur	5-5147	5-6853	318 OEOB
Tobacco	Elizabeth Drye	6-5573	6-7431	210 OEOB
Welfare Reform	Cynthia Rice Diana Fortuna Liz Stock	6-2846 6-5570 6-7871	6-7431 6-7431 6-7431	212R OEOB 212L OEOB 217L OEOB



## **DPC TEAMS**

### **Management**

Bruce Reed  
Assistant to the President for Domestic Policy

Elena Kagan  
Deputy Assistant to the President for Domestic Policy

Paul Weinstein  
Special Assistant to the President for Domestic Policy  
& Chief of Staff

Christa Robinson  
Associate Director For Communications & Events

Cathy Mays  
Executive Assistant to the Assistant to the President

Laura Emmett  
Policy Assistant to the Deputy Assistant to the President

### **Health Care**

Chris Jennings  
Deputy Assistant to the President for Health Care Policy

Jeanne Lambrew  
Senior Director for Health Care Policy (NEC)

Sarah Bianchi  
Assistant Director

Linda Cooper  
Policy Assistant for Health Care and Welfare Reform Teams

### **Policy Planning**

Tom Freedman  
Special Assistant to the President for Policy Planning

Mary Smith  
Associate Director for Policy Planning

Mark Mazur  
Senior Economist (Joint CEA/DPC/NEC)

(See Associate Director for Education Policy)\*\*\*\*

(See Policy Assistant for Crime, Drug, Immigration, and Community Development Team)\*\*\*

## **Crime, Drug, Immigration, Community Development**

Jose Cerda

Special Assistant to the President for Crime, Drug, Immigration, & Community Development Policy

Leanne Shimabukuro

Associate Director for Crime, Drug, Immigration, & Community Development Policy

Open\*\*

Associate Director for Crime, Drug, Immigration, & Community Development Policy and Welfare Reform Teams

Essence Washington\*\*\*

Policy Assistant for Crime, Drug, Immigration, & Community Development Policy and Policy Planning Teams

## **Welfare Reform**

Cynthia Rice

Special Assistant to the President for Welfare Reform

Diana Fortuna

Associate Director for Welfare Reform

(See Associate Director for Crime, Drug, Immigration, & Community Development Policy)\*\*

(See Policy Assistant Health Care)\*

## **Education**

Michael Cohen

Special Assistant to the President for Education Policy  
(Detailee -- Dep't of Education)

Bill Kincaid

Associate Director for Education Policy  
(Detailee -- Dep't of Education)

Tanya Oubre\*\*\*\*

Associate Director for Education Policy  
(Detailee -- Dep't of Education)

Allison Balderston

Policy Assistant for Education  
(Detailee -- Dep't of Education)

## **Children & Families**

Jennifer Klein

Special Assistant to the President for Children & Families

Nicole Rabner

Associate Director for Children & Families

## **ASSOCIATED OFFICES**

### **Rural Development & Farm Policy**

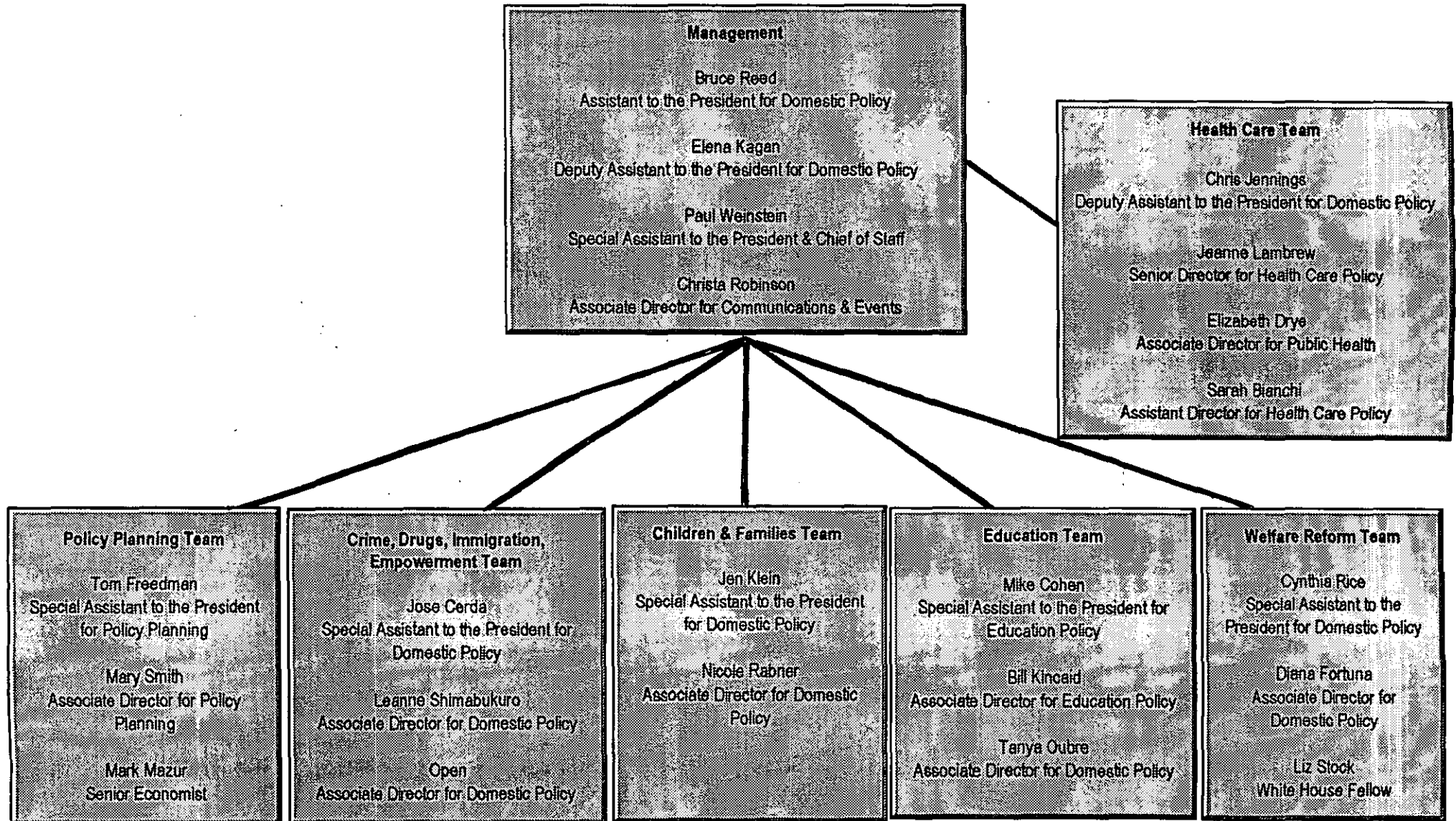
Carl Whillock  
Special Assistant to the President For Rural Development

### **AIDS Office**

Sandy Thurman  
Director of the Office of National AIDS Policy

Todd Summers  
Deputy Director of the Office of National AIDS Policy

## Domestic Policy Council Organizational Chart



Domestic Policy Council Staff/Issue List

Issue Area	Staffer	Phone	Fax	Room Number
AIDS	Sandy Thurman	632-1090	632-1096	750 17th Street
Adoption	Jen Klein Nicole Rabner	6-2259 6-7263	6-2878 6-6244	WW 2FL 100 OEOB
Agriculture/ Rural Development	Carl Whillock	720-2406	720-9286	1400 Independ- ence Ave., SW, Room 216 Administration Building
Budget	Cynthia Rice	6-2846	6-7431	212R OEOB
Choice	Elena Kagan	6-5584	6-2878	WW 2FL
Children & Families	Jen Klein Nicole Rabner	6-2259 6-7263	6-2878 6-6244	WW 2FL 100 OEOB
Civil Rights	Elena Kagan	6-5584	6-2878	WW 2FL
Communications/ 207 OEOB Scheduling/Events	Christa Robinson		6-5165	6-7431
Consumer Issues	Elizabeth Drye	6-5573	6-7431	210 OEOB
Crime	Jose Cerda Leanne Shimabukuro	6-5567 6-5574	6-7028 6-7028	224R OEOB 224L OEOB
Community Empowerment/ Housing OEOB	Jose Cerda Leanne Shimabukuro	6-5567 6-5574	6-7028 6-7028	224R OEOB 224L
Disabilities	Diana Fortuna	6-5570	6-7431	212L OEOB
Drugs	Jose Cerda Leanne Shimabukuro	6-5567 6-5574	6-7028 6-7028	224R OEOB 224L OEOB
Education & Training	Mike Cohen Bill Kincaid	6-5575 6-2857	6-5581 6-7028	218L OEOB 220 OEOB
Environment	Paul Weinstein	6-5577	6-5581	214 OEOB
Health Care	Chris Jennings Jean Lambrew Sara Bianchi	6-5560 6-5377 6-5585	6-5557 6-7431 6-5557	216R OEOB 209 OEOB 216 OEOB
Immigration	Jose Cerda Leanne Shimabukuro	6-5567 6-5574	6-7028 6-7028	224R OEOB 224L OEOB

Labor	Elena Kagan	6-5584	6-2878	WW 2FL
National Service	Diana Fortuna	6-5570	6-7431	212L OEOB
Policy Planning	Tom Freedman Mark Mazur	6-6597 5-5147	6-7431 5-6853	213R OEOB 318 OEOB
Political/Government Reform	Paul Weinstein	6-5577	6-5581	214 OEOB
Product Liability	Elena Kagan Paul Weinstein	6-5584 6-5577	6-2878 6-5581	WW 2FL 214 OEOB
Public Health	Elizabeth Drye	6-5573	6-7431	210 OEOB
FDA Reform	Chris Jennings Jean Lambrew Sara Bianchi	6-5560 6-5377 6-5585	6-5557 6-7431 6-5557	216R OEOB 209 OEOB 216 OEOB
Tax Issues	Mark Mazur	5-5147	5-6853	318 OEOB
Tobacco OEOB	Elizabeth Drye	6-5573	6-7431	210
Welfare Reform	Cynthia Rice Diana Fortuna Lyn Hogan	6-2846 6-5570 6-5567	6-7431 6-7431 6-5581	212R OEOB 212L OEOB 217L OEOB



Paul J. Weinstein Jr.

03/05/97 10:27:33 AM



Record Type: Record

To: Bruce N. Reed/OPD/EOP, Elena Kagan/OPD/EOP

cc:

Subject: Issues For Prince

Here are the range of issues that we have played some role in over the last four years:

Aging/Seniors

Veterans

Telecommunications

Transportation (No one is working on High Speed Rail, and the first line will open up from Boston to Washington in 1999)

Children and Families

Infrastructure

Indians

Gaming

Agriculture

Corporate Responsibility

Defense Conversion

~~Disabilities~~

Housing (I assume Jose will handle, but Jonathan knows Cuomo well.)

Small Business

Space/NASA

Science & Technology

I think the most interesting of these are Small Business, Transportation, Telecom, Space/science, infrastructure, and corporate responsibility. We also desperately need someone to work on aging and veterans issues. Aging can be interesting if you include entitlement reform, which is a huge issue, and one in which we should be active.

I definitely am interested in handling environmental issues and would like to keep that as well as political reform. However, I am obviously flexible. One other issue we could give Jonathan is our Liaison to NPR and the REGO effort. I have to admit I haven't done much on that this year and would be willing to give that up if Jonathan is interested.

Let me know what you both think.

**DOMESTIC POLICY TRANSITION PLAN**  
 March 4, 1997 **Draft**

**TABLE 1**

<u>Current Staffer</u>	<u>Salary</u>	<u>New Staffer</u>	<u>Salary</u>	<u>Carryover</u>
Carol Rasco (Ass't to POTUS)	\$125,000	Cynthia Rice (SAP to POTUS)	\$85,000	\$40,000
Jeremy Ben-Ami (DAS to POTUS)	\$100,000	Elena Kagan (DAS to POTUS)	\$110,000	\$30,000
Chris Jennings (SAP to POTUS)	\$95,000	Chris Jennings (DAS to POTUS)	\$99,875	\$25,125
Jill Pizzuto (Ass't to CHR)	\$31,500	Laura Emmet (Exec. Ass't. EK)	\$35,000	\$21,625
Molly Brostrom (S. Policy Analyst)	\$60,000	Cathy Mays (Exec. Ass't BNR))	\$50,000	\$31,625
Patsy Fleming (AIDS Czar)	\$112,000	Open (AIDS Czar)	\$110,000	\$33,625
Jeffrey Levi (AIDs Deputy)	\$82,000	Open (AIDS Deputy)	\$80,000	\$35,625
Debbie Fine (SAP to POTUS)	\$60,000	Tom Freedman (SAP to POTUS)	\$85,000	\$10,625
Pam Cicetti (Ass't to 1st Lady)	\$50,000	Nicole Rabner (1st Lady Policy)	\$35,000	\$25,625
New Slot	\$0	Researcher (1st Lady Policy)	\$20,625	\$0

\*\*All the above are paid from the White House Account

---

**Remaining White House Salary Budget**----->**\$0**

---



**TABLE 2**

<u>Current Staffer</u>	<u>Salary</u>	<u>New Staffer</u>	<u>Salary</u>	<u>Carryover</u>
Unallocated FY97 Budget	-----	-----	-----	\$48,562
Sandy Bublick Max (Ass't to Jennings)	\$45,000	Christa Robinson (Assoc. Director)	\$42,000	\$51,562
Cathy Mays (Ass't to BNR)	\$38,500	Sara Bianchi Policy Assistant	\$40,000	\$50,062
Paul Weinstein (SAP to POTUS)	\$75,000	Paul Weinstein (SAP to POTUS & COS)	\$85,000	\$40,062
Dorothy Kraft (Ass't to Ben-Ami)	\$30,000	Open Assoc. Direct. For Policy Planning	\$40,000	\$30,062
Steve Warnath (Policy Analyst)	\$65,000	Jose Cerda (SAP to POTUS)	\$85,000	\$10,062
Elizabeth Drye (COS)	\$75,000	Jonathan Prince (SAP to POTUS)	\$85,000	\$62
Lyn Hogan (Sen. Pol. Analyst)	\$50,000	Lyn Hogan (Assoc. Director)	\$50,000	\$62
Leanne Shimabukuro (Policy Analyst)	\$45,000	Leanne Shimabukuro (Assoc. Director)	\$45,000	\$62
Diana Fortuna (Sen. Pol. Analyst)	\$75,000	Diana Fortuna (Assoc. Director)	\$75,000	\$62
Jennifer Klein (SAP to POTUS)	\$75,000	Jennifer Klein (SAP to POTUS)	\$75,000	\$62

\*\*All the above are paid from the OPD account.

---

**Remaining OPD Budget**----->**\$62**

---

**TABLE 3**

<u><b>Detailees</b></u>	<u><b>DPC Share</b></u>	<u><b>New Staffer</b></u>
Dennis Burke (Justice)	\$50,907	Open Associate Director for Crime (DOJ)
Michael Cohen (SAP to POTUS) (Education Detailee)	\$41,526	Michael Cohen SAP to POTUS (DoED Detailee)
Claudia Williams (USDA)	\$0	Bill Kincaid Associate Director For Education (DoED Detailee)
Diane Regas EPA	\$0	Open Policy /Staff Assistant for Policy Planning (Detailee)
Jeanine Smart (HHS)	\$0	Open Staff Assistant Crime & Education Teams (DOJ or DoED Detailee)
Open	\$0	Open Staff Assistant Health Care & Welfare Teams (HHS Detailee)
Total Allocated Detailee Budget----->		\$92,433
FY97 Detailee Budget----->		\$234,750
Unallocated Detailee Budget----->		\$142,317
<hr/> <b>Remaining Detailee Budget-----&gt;</b>		<b>\$142,317</b>
<hr/>		

## **DPC TEAMS**

### **Management**

Bruce Reed  
Assistant to the President for Domestic Policy

Elena Kagan  
Deputy Assistant to the President for Domestic Policy

Paul Weinstein  
Special Assistant to the President for Domestic Policy  
& Chief of Staff

Christa Robinson  
Associate Director For Communications & Event Coordination

Cathy Mays  
Executive Assistant to the Assistant to the President

Laura Emmet  
Executive Assistant to the Deputy Assistant to the President

### **Health Care**

Chris Jennings  
Deputy Assistant to the President for Health Care Policy

Jean Lambrew  
Senior Director for Health Care Policy (NEC)

Sara Bianchi  
Policy Analyst

Staff Assistant for Health Care and Welfare Teams  
(Detailee -- HHS)

### **Policy Planning**

Tom Freedman  
Special Assistant to the President for Policy Planning

Open  
Associate Director for Policy Planning

Open  
Policy/Staff Assistant  
(Detail)

### **Crime, Drug, Immigration, Community Development**

Jose Cerda  
Special Assistant to the President for Crime, Drug, Immigration, & Community Development Policy

Leanne Shimabukuro  
Associate Director for Crime, Drug, Immigration, & Community Development Policy

Open  
Associate Director for Crime, Drug, Immigration, & Community Development Policy  
(Detail)

### **Welfare Reform**

Cynthia Rice  
Special Assistant to the President for Welfare Reform

Diana Fortuna  
Senior Director for Welfare Reform

Lyn Hogan  
Associate Director for Welfare Reform

(See Thing 3)

### **Education**

Michael Cohen  
Special Assistant to the President for Education Policy  
(Detailee -- Dep't of Education)

Bill Kincaid  
Associate Director for Education Policy  
(Detailee -- Dep't of Education)

Tanya Oubre  
Associate Director for Education Policy  
(Detailee -- Dep't of Education)

Open  
Staff Assistant for Education and Crime Teams  
(Detailee)

### **Special Projects**

Jennifer Klein  
Special Assistant to the President for Special Projects

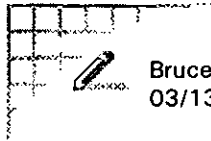
Nicole Rabner  
Associate Director for Special Projects

Open  
Policy Analyst for Special Projects

### **Policy Analysis**

Jonathan Prince  
Special Assistant to the President for Policy Analysis

DPC - org + budget



Bruce N. Reed  
03/13/97 02:13:44 PM

Record Type: Record

To: Paul J. Weinstein Jr./OPD/EOP, Christa Robinson/OPD/EOP, Elena Kagan/OPD/EOP  
cc:  
Subject: Scheduling Requests

Those procedures look great. At our staff mtgs, let's compare notes on schedule so we know what to put in for.

----- Forwarded by Bruce N. Reed/OPD/EOP on 03/13/97 02:11 PM -----



12:27:53 PM

Record Type: Record

To: See the distribution list at the bottom of this message  
cc: Bruce N. Reed/OPD/EOP, Elena Kagan/OPD/EOP  
Subject: Scheduling Requests

In our efforts to make your lives easier , improve our tracking of scheduling requests, and provide you with more time to conduct policy work, we have developed some new procedures regarding Presidential scheduling requests:

Bruce Reed (after discussions with the relevant policy staffer if needed) decides to submit a scheduling request;

Relevant policy staffer and Christa Robinson meet to discuss scheduling memo;

Scheduling request is drafted by Christa Robinson;

Relevant policy staffer reviews;

Scheduling request is either approved or disapproved by Bruce Reed and Elena Kagan;

Request is submitted;

Christa Robinson tracks scheduling request at short-term scheduling meeting;

Christa advises DPC if request has been approved or disapproved.

Finis

If you have any questions or concerns, please let me know.

FY 1998 Current Services Level  
Office of Policy Development  
By Division/Object Class  
(in thousands)

	FULL TIME	OTHER THAN FULL TIME	SPECIAL SERVICES	CIVILIAN BENEFITS	TRAVEL	TRANSPORT. OF THINGS	RENT	RENT, COMMUN. & UTILITIES	PRINTING	OTHER SERVICES	SUPPLIES & EQUIPMEN	TOTAL												
FY 1996 Enacted	2,018	20	317	473	175	1	495	119	36	75	60	3,864												
Full Year Level Increases			(4)	(23)	(15)		45					3												
FY 1997 Full Year Level	2,018	20	313	450	160	1	540	119	36	75	60	3,867												
CSL Increases/Decreases	85	(20)	(84)	70	0	0	0	0	0	35	5	116												
FY 1998 CSL	2,103	0	229	520	160	1	540	119	36	110	65	3,983												
% Change	4.2%	-100.0%	-26.8%	15.6%	0.0%	0.0%	0.0%	0.0%	0.0%	46.7%	8.3%	3.0%												
DPC	670	32%	0	172	75%	166	32%	50	31%	0.4	44%	275.4	51%	52.4	44%	15.8	44%	14.5	13%	28.6	44%	44	44%	1,489
NEC	1433	68%	0	57	25%	354	68%	110	69%	0.6	56%	264.6	44%	66.6	56%	20.2	56%	95.5	87%	36.4	56%	56	56%	2,494
Total	2,103		0	229		520		160		1		540		119		36		110		65		100		3,983

Assumptions: FY 1998 CSL increases are based on inflationary increases in FY 1997 and fy 1998 of actual expenses in FY 1996, less non-recurring items.

FY 1998 OPD request is \$3,983,000

FTE Summary	OPD	DPC	NEC
FY 1997	31	11	20
FY 1998 Adjustment	0	0	0
FY 1998 Request	31	-11	20

OGE Summary	OPD	DPC	NEC
FY 1997	8	6	2
FY 1998 Adjustment	0	0	0
FY 1998 Request	8	6	2

OPD Split of FTE's + OGE's	OPD	DPC	NEC
FTE's + OGE's	39	17	22
% of OPD	100%	44%	56%

FOOTNOTES:

- \* Includes \$65,000 re-programmed from special personal services to civilian benefits.
- \* Special Personal Services Category also reflects \$3,000 rescission.

*Decision on numbers  
Friday - noon, the  
OMB Next  
Tuesday.*

*Compare with the  
Plan below*

FY 1998 OPD Budget Build

*One week*

	FY96 Request	FY96 Recur.	FY96 Non-rec.	FY96 Actual	FY97 Enacted	FY97 Proj.	FY97 Enac. + 3%	FY98 Request
Full-time permanent	\$2,018,000	\$1,899,950	\$0	\$1,899,950	\$2,018,000	\$1,825,990	\$2,078,540	\$2,103,000
Other than full-time	\$20,000	\$0	\$0	\$0	\$20,000	\$0	\$20,600	\$0
Special personal svcs.	\$317,000	\$196,912	\$0	\$196,912	\$313,000	\$139,580	\$322,390	\$229,000
Civilian benefits	\$473,000	\$458,299	\$0	\$458,299	\$450,000	\$383,751	\$463,500	\$520,000
Former personnel	\$0	\$7,320	\$0	\$7,320	\$0	\$7,480	\$0	\$0
Travel	\$175,000	\$132,124	\$0	\$132,124	\$160,000	\$130,000	\$164,800	\$160,000
Trans of things	\$1,000	\$958	\$0	\$958	\$1,000	\$1,000	\$1,030	\$1,000
GSA rent	\$495,000	\$539,947	\$0	\$539,947	\$540,000	\$540,000	\$556,200	\$540,000
RCU	\$119,000	\$118,194	\$38,915	\$157,109	\$119,000	\$76,374	\$122,570	\$119,000
Printing	\$36,000	\$34,927	\$14,286	\$49,213	\$36,000	\$32,000	\$37,080	\$36,000
Other svcs.	\$75,000	\$100,094	\$21,138	\$121,232	\$75,000	\$116,879	\$77,250	\$110,000
Supplies	\$60,000	\$75,888	\$24,119	\$100,007	\$60,000	\$69,270	\$61,800	\$65,000
Equipment	\$75,000	\$81,128	\$42,557	\$123,685	\$75,000	\$75,000	\$77,250	\$100,000
	\$3,864,000	\$3,645,741	\$141,015	\$3,786,756	\$3,867,000	\$3,397,324	\$3,983,010	\$3,983,000

	1996 Actual			1997 Enacted			1998 Request		
	DPC	NEC	TOTAL	DPC	NEC	TOTAL	DPC	NEC	TOTAL
Full-time permanent	\$616,629	\$1,283,321	\$1,899,950	\$669,062	\$1,368,938	\$2,038,000	\$669,964	\$1,433,061	\$2,103,025
Special personal svcs.	\$129,353	\$67,559	\$196,912	\$234,750	\$78,250	\$313,000	\$172,102	\$57,367	\$229,469
<i>Total personnel</i>	\$745,982	\$1,350,880	\$2,096,862	\$903,812	\$1,447,188	\$2,351,000	\$842,066	\$1,490,428	\$2,332,494
Civilian benefits	\$151,292	\$307,007	\$458,299	\$148,500	\$301,500	\$450,000	\$165,500	\$354,006	\$519,506
Travel	\$43,138	\$88,986	\$132,124	\$50,000	\$110,000	\$160,000	\$50,000	\$110,000	\$160,000
Transp. of things			\$958			\$1,000	\$440	\$560	\$1,000
GSA rent			\$539,947			\$540,000	\$275,400	\$264,600	\$540,000
RCU			\$157,109			\$119,000	\$52,360	\$66,640	\$119,000
Printing			\$49,213			\$36,000	\$15,840	\$20,160	\$36,000
Other svcs.			\$121,232			\$75,000	\$14,526	\$95,474	\$110,000
Supplies			\$100,007			\$60,000	\$28,600	\$36,400	\$65,000
Equipment			\$123,685			\$75,000	\$44,000	\$56,000	\$100,000
<b>TOTAL</b>			\$3,779,436			\$3,867,000	\$1,488,732	\$2,494,268	\$3,983,000

*→ STAFF*

*Frank pointed  
Next to Phil's box  
Business Service  
Program 1997*

*CompuLink  
Software*

*△ This*

# Withdrawal/Redaction Marker Clinton Library

DOCUMENT NO. AND TYPE	SUBJECT/TITLE	DATE	RESTRICTION
002a. form	RE: Estimate of Alterations (1 page)	n.d.	b(2)

## COLLECTION:

Clinton Presidential Records  
Domestic Policy Council  
Elena Kagan  
OA/Box Number: 14359

## FOLDER TITLE:

DPC [Domestic Policy Council] - Organization and Budget

2009-1006-F  
db1535

## RESTRICTION CODES

### Presidential Records Act - [44 U.S.C. 2204(a)]

- P1 National Security Classified Information [(a)(1) of the PRA]
- P2 Relating to the appointment to Federal office [(a)(2) of the PRA]
- P3 Release would violate a Federal statute [(a)(3) of the PRA]
- P4 Release would disclose trade secrets or confidential commercial or financial information [(a)(4) of the PRA]
- P5 Release would disclose confidential advice between the President and his advisors, or between such advisors [(a)(5) of the PRA]
- P6 Release would constitute a clearly unwarranted invasion of personal privacy [(a)(6) of the PRA]

C. Closed in accordance with restrictions contained in donor's deed of gift.

PRM. Personal record misfile defined in accordance with 44 U.S.C. 2201(3).

RR. Document will be reviewed upon request.

### Freedom of Information Act - [5 U.S.C. 552(b)]

- b(1) National security classified information [(b)(1) of the FOIA]
- b(2) Release would disclose internal personnel rules and practices of an agency [(b)(2) of the FOIA]
- b(3) Release would violate a Federal statute [(b)(3) of the FOIA]
- b(4) Release would disclose trade secrets or confidential or financial information [(b)(4) of the FOIA]
- b(6) Release would constitute a clearly unwarranted invasion of personal privacy [(b)(6) of the FOIA]
- b(7) Release would disclose information compiled for law enforcement purposes [(b)(7) of the FOIA]
- b(8) Release would disclose information concerning the regulation of financial institutions [(b)(8) of the FOIA]
- b(9) Release would disclose geological or geophysical information concerning wells [(b)(9) of the FOIA]



# Withdrawal/Redaction Marker

## Clinton Library

DOCUMENT NO. AND TYPE	SUBJECT/TITLE	DATE	RESTRICTION
002b. diagram	RE: Office of Policy Development (3 pages)	n.d.	b(2)

### COLLECTION:

Clinton Presidential Records  
Domestic Policy Council  
Elena Kagan  
OA/Box Number: 14359

### FOLDER TITLE:

DPC [Domestic Policy Council] - Organization and Budget

2009-1006-F  
db1535

### RESTRICTION CODES

#### Presidential Records Act - [44 U.S.C. 2204(a)]

- P1 National Security Classified Information [(a)(1) of the PRA]
- P2 Relating to the appointment to Federal office [(a)(2) of the PRA]
- P3 Release would violate a Federal statute [(a)(3) of the PRA]
- P4 Release would disclose trade secrets or confidential commercial or financial information [(a)(4) of the PRA]
- P5 Release would disclose confidential advice between the President and his advisors, or between such advisors [(a)(5) of the PRA]
- P6 Release would constitute a clearly unwarranted invasion of personal privacy [(a)(6) of the PRA]

C. Closed in accordance with restrictions contained in donor's deed of gift.

PRM. Personal record misfile defined in accordance with 44 U.S.C. 2201(3).

RR. Document will be reviewed upon request.

#### Freedom of Information Act - [5 U.S.C. 552(b)]

- b(1) National security classified information [(b)(1) of the FOIA]
- b(2) Release would disclose internal personnel rules and practices of an agency [(b)(2) of the FOIA]
- b(3) Release would violate a Federal statute [(b)(3) of the FOIA]
- b(4) Release would disclose trade secrets or confidential or financial information [(b)(4) of the FOIA]
- b(6) Release would constitute a clearly unwarranted invasion of personal privacy [(b)(6) of the FOIA]
- b(7) Release would disclose information compiled for law enforcement purposes [(b)(7) of the FOIA]
- b(8) Release would disclose information concerning the regulation of financial institutions [(b)(8) of the FOIA]
- b(9) Release would disclose geological or geophysical information concerning wells [(b)(9) of the FOIA]

delt Levi - probably stays

Budget

11 OPT

12 WH

gone ← Mia

Debbie  
Ira

Paul C →  
Nicole

Sabrina (FL)  
12th slot

DET: Kayan / Jennings

SAP - ONLY 5

Take away  
SAP? ←

Jen Klein

Paul

counted?? -

Cohen

Picking SAPS

Chris

Debbie F.

Cynthia  
Tara  
Miaarity  
(Ton)

more thing

Well - Cynthia / Lyn / Diana

Ed - ok - (Mik) + 2-3 Ds

Health - ok ] Chris / Jen / ~~Thurs~~ / NEC

Crime - Denn / Leanne / ~~Tora~~ / ~~Warren~~

Think tank - Tara / + 3 spots

PUNK - AIDS 1 / AIDS 2 / FL1 / FL2

1. Eliz / Paul / Warren

NEC  
2 Asst  
2 DEPS  
6 SAPS

Joe  
Molly -  
Cand  
Bill  
Mia -  
Ira  
Debbie  
Cyr  
Tara

ED

Mike + 3D

WR

CRIME

HC

JUNK

THINK

Cyn

Dennis (D)

Chris

AIDS 1

Tom

Lyn

Tom

Jan

AIDS 2

- Molly

Diana

Ther Leanne

Thiny

FL1

- Mia

Thiny 2 (Still)

[NEE]

FL2

ELIZ

- Wannath

- DI

ADMIN

Prnce

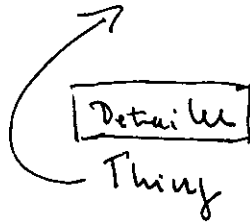
Cathy

Elena

MyThiny

Paul

Pratten:



- Wannath

- ~~W~~ Mia (Asst)

Tom

- Gore

- Molly

- DETAILER

January 9, 1997

MEMORANDUM FOR BRUCE REED

FROM: Paul Weinstein

SUBJECT: Reorganization of DPC

<u>Current Staffer</u>	<u>Salary</u>	<u>New Staffer</u>	<u>Salary</u>	<u>Carryover</u>
Carol Rasco----- (Ass't to POTUS)	\$125,000-----	>ELJC 1----- (SAP to POTUS)	\$80,000-----	+\$45,000
Jeremy Ben-Ami----- (DAS to POTUS)	\$100,000-----	>Elena Kagan----- (DAS to POTUS)	\$110,000-----	+\$35,000
Chris Jennings----- (SAP to POTUS)	\$95,000-----	>Chris Jennings--- (DAS to POTUS)	\$100,000-----	+\$30,000
Jill Pizzuto----- (Ass't to CHR)	\$31,500-----	>Thing 1----- (Freedman)	\$33,000-----	+\$28,000
Molly Brostrom----- (Senior Analyst)	\$60,000-----	>Tom Freedman----- (SAP)	\$80,000-----	+\$8,000
Carryover-----				+\$8,000

\*\*All the above are paid from White House account.

---

<u>Current Staffer</u>	<u>Salary</u>	<u>New Staffer</u>	<u>Salary</u>	<u>Carryover</u>
Ira Magaziner----- (Senior Adviser)	\$110,000-----	>Bratton----- Senior Adviser	\$100,000-----	+\$13,000
AIDS Deputy-----	\$82,000-----	>ELJC 2-----	\$80,000-----	+\$15,000
Debbie Fine----- (SAP to Potus)	\$60,000-----	>ELJC 3-----	\$80,000-----	+\$0
Carryover-----				+\$0

\*\*All the above are paid from White House Account.

---

<u>Current Staffer</u>	<u>Salary</u>	<u>New Staffer</u>	<u>Salary</u>	<u>Carryover</u>
Mia Masten----- (Ass't IM)	\$47,000-----	>Thing 3----- (Kagan)	\$40,000-----	+\$7,000
Sandy Bublick Max----- (Ass't Chris)	\$45,000-----	>Thing 4----- (Jennings)	\$35,000-----	+\$17,000
Leanne Shimabukuro----- (Admin Ass't/Policy)	\$45,000-----	>Thing 5----- (Crime)	\$35,000-----	+\$27,000
Steve Warnath----- (Policy Analyst)	\$65,000-----	>ELJC 4-----	\$80,000-----	+\$12,000
Unused FY97 Budget-----	\$30,312			
<b>Carryover-----</b>				<b>+32,312</b>

\*\*All the above are paid from OPD account.

---

<u>Detailees</u>	<u>DPC Share</u>	<u>New Staffer</u>
Dennis Burke-----	>\$50,907-----	Same
Michael Cohen-----	>\$41,526-----	Same
Claudia Williams-----	>\$0-----	Education Detailee
Diane Regas-----	>\$0-----	Education Detailee
Jeanine Smart-----	>\$0-----	Education Detailee
Open-----	>\$0-----	Not Assigned
Total Allocated-----	>\$92,433	
FY97 Detailee Budget-----	>\$234,750	
<b>Carryover-----</b>		<b>&gt;\$142,317</b>

---

**DPC - FY 1997 PERSONNEL**

As of December 20, 1996

**Office of Policy Development Employees:**

Bublick-Max, Sandra <u>Chris 1</u>	\$45,000
Drye, Elizabeth	\$75,000
Fortuna, Diana	\$75,000
Hogan, Lyn	\$50,000
Karayannis, Dorothy <u>Elena 2</u>	\$30,000
Klein, Jennifer	\$75,000 SAP
<del>Masten, Mia</del> <u>Think 1</u>	\$47,000
Mays, Cathy	\$38,500
Shimabukuro, Leanne <u>or Thing</u>	\$45,000
Warnath, Stephen	\$65,000
Weinstein, Paul	\$75,000 SAP

**White House Office Employees:**

Ben-Ami, Jeremy Elena	\$100,000	DAP
Brostrom, Molly <u>Think 2</u>	\$65,000	
<del>Cicetti, Pamela</del> <u>Nicole Rabner</u>	\$50,000	
<del>Fine, Deborah</del> <u>Tom F.</u>	\$60,000	SAP
Fleming, Patricia	\$112,000	
Jennings, Christopher	\$95,000	DAP
Levi, Jeffrey	\$82,000	
Magaziner, Ira <u>Cynthia</u>	\$110,000	SAP
Pizzuto, Jill <u>Think 3</u>	\$31,500	
<del>Raseo, Carol</del> <u>Jose</u>	\$125,000	
Reed, Bruce	\$125,000	
<del>Subrina</del>		

**TOTAL \$955,500**

**TOTAL \$620,500 (NOT ANNUALIZED TOTAL - ONLY BASE SALARIES)**  
**Total Current FTE's 11**

FY 1997 Authorized Personnel Budget \$650,812  
 FY 1997 Authorized FTE's 11

1 AP  
 2 DAPs  
 5 SAPs

DPC Reimbursable Details	Salary	Expiration	Reimb. Sal.	Reimb. Ben.	Reimb. Total
Burke, Dennis	\$80,834	9/30/97	\$40,726	\$10,181	\$50,907
Cohen, Michael	\$120,886	7/1/97	\$33,221	\$8,305	\$41,526
Rayford-Williams, Claudia	\$78,385	1/31/97	\$0	\$0	\$0
Regas, Diane	\$83,284	3/28/97	\$0	\$0	\$0
Smartt, Jeanine (PMI)	\$30,658	12/31/96	\$0	\$0	\$0
<b>Total</b>			<b>\$73,946</b>	<b>\$18,487</b>	<b>\$92,433</b>
			<b>Total Current OGE's</b>		<b>4</b>

**FY97 Detailee Budget**  
**FY 1997 Authorized OGE's \$234,750**  
6

<u>EDUC</u> Mike - 3 D	<u>WR</u> Cynthia Lyn Diana	<u>CRIME</u> Dennis (D) Jose Leanne	<u>HC</u> Chris Jen Thing 1 [Jen*]	<u>JUNK</u> AIDS 1 AIDS 2 FL 1 <del>FL 2</del>	<u>THINK</u> Tom Molly <del>Mia</del> Mia FL 2 Elizabeth Warnath D1 <del>FL 2</del>	<u>MIGHT</u> BAD Cathy Elena Elena Thing 3 (Dorothy) [Drew]
						M. Warren Thing Neil Kirkopf Jensen Couch Casey Cooper Major Richard Thomas, coord. Peter Medelas

FY 1998 Current Services Level  
Office of Policy Development  
By Division/Object Class  
(in thousands)

g:\data\fy1998\opd\98-csl2.w 29-Jan-97  
12:17 PM

	FULL TIME	OTHER THAN FULL TIME	SPECIAL SERVICES	CIVILIAN BENEFITS	TRAVEL	TRANSPORT. OF THINGS	RENT	RENT, COMMUN. & UTILITIES	PRINTING	OTHER SERVICES	SUPPLIES	FURNITURE & EQUIPMEN	TOTAL
FY 1996 Enacted	2,018	20	317	473	175	1	495	119	36	75	60	75	3,864
Full Year Level Increases			(4)	(23)	(15)		45						3
FY 1997 Full Year Level	2,018	20	313	450	160	1	540	119	36	75	60	75	3,867
CSL Increases/Decreases	85	(20)	(84)	70	0	0	0	0	0	35	5	25	116
FY 1998 CSL	2,103	0	229	520	160	1	540	119	36	110	65	100	3,983
% Change	4.2%	-100.0%	-26.8%	15.6%	0.0%	0.0%	0.0%	0.0%	0.0%	46.7%	8.3%	33.3%	3.0%
DPC	670	0	172	166	50	0.4	275.4	52.4	15.8	14.5	28.6	44	1,489
NEC	1433	0	57	354	110	0.6	264.6	66.6	20.2	95.5	36.4	56	2,494
Total	2,103	0	229	520	160	1	540	119	36	110	65	100	3,983

FTE Summary			
	OPD	DPC	NEC
FY 1997	31	11	20
FY 1998 Adjustment	0	0	0
FY 1998 Request	31	11	20

Assumptions: FY 1998 CSL increases are based on inflationary increases in FY 1997 and fy 1998 of actual expenses in FY 1996, less non-recurring items.

FY 1998 OPD request is \$3,983,000

OGE Summary			
	OPD	DPC	NEC
FY 1997	8	6	2
FY 1998 Adjustment	0	0	0
FY 1998 Request	8	6	2

OPD Split of FTE's + OGE's			
	OPD	DPC	NEC
FTE's + OGE's	39	17	22
% of OPD	100%	44%	56%

FOOTNOTES:

- \* Includes \$65,000 re-programmed from special personal services to civilian benefits.
- \* Special Personal Services Category also reflects \$3,000 rescission.

*Decision on numbers Friday - mon, Tue.  
OMB Next Tuesday.*

*Compass with Bu a below*

*MDS / 2 people*

*Events*

*? Elena trying*

*Tracy Cathy*

*Think Tim E  
Warren trying  
EVA trying*

*First Lady  
Debbie  
Noble  
Sabrina*

*Paul*

*Mike  
2+MA*

*Von  
Nisch/der  
Leanne  
Christina-Events*

*Heather  
Chris  
Thuy HC  
Jan  
Jane*

*Well  
Dyukha  
Diana-Natasha  
Lynn*

*AA*

FY 1998 OPD Budget Build

*one week*

	FY96 Request	FY96 Recur.	FY96 Non-rec.	FY96 Actual	FY97 Enacted	FY97 Proj.	FY97 Enac. + 3%	FY98 Request
Full-time permanent	\$2,018,000	\$1,899,950	\$0	\$1,899,950	\$2,018,000	\$1,825,990	\$2,078,540	\$2,103,000
Other than full-time	\$20,000	\$0	\$0	\$0	\$20,000	\$0	\$20,600	\$0
Special personal svcs.	\$317,000	\$196,912	\$0	\$196,912	\$313,000	\$139,580	\$322,390	\$229,000
Civilian benefits	\$473,000	\$458,299	\$0	\$458,299	\$450,000	\$383,751	\$463,500	\$520,000
Former personnel	\$0	\$7,320	\$0	\$7,320	\$0	\$7,480	\$0	\$0
Travel	\$175,000	\$132,124	\$0	\$132,124	\$160,000	\$130,000	\$164,800	\$160,000
Trans of things	\$1,000	\$958	\$0	\$958	\$1,000	\$1,000	\$1,030	\$1,000
GSA rent	\$495,000	\$539,947	\$0	\$539,947	\$540,000	\$540,000	\$556,200	\$540,000
RCU	\$119,000	\$118,194	\$38,915	\$157,109	\$119,000	\$76,374	\$122,570	\$119,000
Printing	\$36,000	\$34,927	\$14,286	\$49,213	\$36,000	\$32,000	\$37,080	\$36,000
Other svcs.	\$75,000	\$100,094	\$21,138	\$121,232	\$75,000	\$116,879	\$77,250	\$110,000
Supplies	\$60,000	\$75,888	\$24,119	\$100,007	\$60,000	\$69,270	\$61,800	\$65,000
Equipment	\$75,000	\$81,128	\$42,557	\$123,685	\$75,000	\$75,000	\$77,250	\$100,000
	\$3,864,000	\$3,645,741	\$141,015	\$3,786,756	\$3,867,000	\$3,397,324	\$3,983,010	\$3,983,000

*→ STAFF*

	1996 Actual			1997 Enacted			1998 Request		
	DPC	NEC	TOTAL	DPC	NEC	TOTAL	DPC	NEC	TOTAL
Full-time permanent	\$616,629	\$1,283,321	\$1,899,950	\$669,062	\$1,368,938	\$2,038,000	\$669,964	\$1,433,061	\$2,103,025
Special personal svcs.	\$129,353	\$67,559	\$196,912	\$234,750	\$78,250	\$313,000	\$172,102	\$57,367	\$229,469
<i>Total personnel</i>	\$745,982	\$1,350,880	\$2,096,862	\$903,812	\$1,447,188	\$2,351,000	\$842,066	\$1,490,428	\$2,332,494
Civilian benefits	\$151,292	\$307,007	\$458,299	\$148,500	\$301,500	\$450,000	\$165,500	\$354,006	\$519,506
Travel	\$43,138	\$88,986	\$132,124	\$50,000	\$110,000	\$160,000	\$50,000	\$110,000	\$160,000
Transp. of things			\$958			\$1,000	\$440	\$560	\$1,000
GSA rent			\$539,947			\$540,000	\$275,400	\$264,600	\$540,000
RCU			\$157,109			\$119,000	\$52,360	\$66,640	\$119,000
Printing			\$49,213			\$36,000	\$15,840	\$20,160	\$36,000
Other svcs.			\$121,232			\$75,000	\$14,526	\$95,474	\$110,000
Supplies			\$100,007			\$60,000	\$28,600	\$36,400	\$65,000
Equipment			\$123,685			\$75,000	\$44,000	\$56,000	\$100,000
<b>TOTAL</b>			\$3,779,436			\$3,867,000	\$1,488,732	\$2,494,268	\$3,983,000

*Next of Full-time per  
personnel source  
page source  
1997*

*Computers  
Software*

*△ this*



# Withdrawal/Redaction Marker

## Clinton Library

DOCUMENT NO. AND TYPE	SUBJECT/TITLE	DATE	RESTRICTION
003. diagram	RE: Domestic Policy Council (1 page)	n.d.	b(2)

### COLLECTION:

Clinton Presidential Records  
Domestic Policy Council  
Elena Kagan  
OA/Box Number: 14359

### FOLDER TITLE:

DPC [Domestic Policy Council] - Organization and Budget

2009-1006-F

db1535

### RESTRICTION CODES

#### Presidential Records Act - [44 U.S.C. 2204(a)]

- P1 National Security Classified Information [(a)(1) of the PRA]
- P2 Relating to the appointment to Federal office [(a)(2) of the PRA]
- P3 Release would violate a Federal statute [(a)(3) of the PRA]
- P4 Release would disclose trade secrets or confidential commercial or financial information [(a)(4) of the PRA]
- P5 Release would disclose confidential advice between the President and his advisors, or between such advisors [(a)(5) of the PRA]
- P6 Release would constitute a clearly unwarranted invasion of personal privacy [(a)(6) of the PRA]

C. Closed in accordance with restrictions contained in donor's deed of gift.

PRM. Personal record misfile defined in accordance with 44 U.S.C. 2201(3).

RR. Document will be reviewed upon request.

#### Freedom of Information Act - [5 U.S.C. 552(b)]

- b(1) National security classified information [(b)(1) of the FOIA]
- b(2) Release would disclose internal personnel rules and practices of an agency [(b)(2) of the FOIA]
- b(3) Release would violate a Federal statute [(b)(3) of the FOIA]
- b(4) Release would disclose trade secrets or confidential or financial information [(b)(4) of the FOIA]
- b(6) Release would constitute a clearly unwarranted invasion of personal privacy [(b)(6) of the FOIA]
- b(7) Release would disclose information compiled for law enforcement purposes [(b)(7) of the FOIA]
- b(8) Release would disclose information concerning the regulation of financial institutions [(b)(8) of the FOIA]
- b(9) Release would disclose geological or geophysical information concerning wells [(b)(9) of the FOIA]

# Withdrawal/Redaction Marker Clinton Library

DOCUMENT NO. AND TYPE	SUBJECT/TITLE	DATE	RESTRICTION
004. email	From: Paul Weinstein To: Bruce Reed; RE: DPC Budget (partial) (1 page)	02/03/1997	P6/b(6)

## COLLECTION:

Clinton Presidential Records  
Domestic Policy Council  
Elena Kagan  
OA/Box Number: 14359

## FOLDER TITLE:

DPC [Domestic Policy Council] - Organization and Budget

2009-1006-F  
db1535

## RESTRICTION CODES

### Presidential Records Act - [44 U.S.C. 2204(a)]

- P1 National Security Classified Information [(a)(1) of the PRA]
- P2 Relating to the appointment to Federal office [(a)(2) of the PRA]
- P3 Release would violate a Federal statute [(a)(3) of the PRA]
- P4 Release would disclose trade secrets or confidential commercial or financial information [(a)(4) of the PRA]
- P5 Release would disclose confidential advice between the President and his advisors, or between such advisors [a)(5) of the PRA]
- P6 Release would constitute a clearly unwarranted invasion of personal privacy [(a)(6) of the PRA]

C. Closed in accordance with restrictions contained in donor's deed of gift.

PRM. Personal record misfile defined in accordance with 44 U.S.C. 2201(3).

RR. Document will be reviewed upon request.

### Freedom of Information Act - [5 U.S.C. 552(b)]

- b(1) National security classified information [(b)(1) of the FOIA]
- b(2) Release would disclose internal personnel rules and practices of an agency [(b)(2) of the FOIA]
- b(3) Release would violate a Federal statute [(b)(3) of the FOIA]
- b(4) Release would disclose trade secrets or confidential or financial information [(b)(4) of the FOIA]
- b(6) Release would constitute a clearly unwarranted invasion of personal privacy [(b)(6) of the FOIA]
- b(7) Release would disclose information compiled for law enforcement purposes [(b)(7) of the FOIA]
- b(8) Release would disclose information concerning the regulation of financial institutions [(b)(8) of the FOIA]
- b(9) Release would disclose geological or geophysical information concerning wells [(b)(9) of the FOIA]



Paul J. Weinstein Jr.

02/03/97 03:26:57 PM



Record Type: Record

To: Bruce N. Reed/OPD/EOP  
cc: Elena Kagan/OPD/EOP, Cathy R. Mays/OPD/EOP  
Subject: DPC BUDGET AND OTHER TOUGH ISSUES.

I know you are swamped, but Elena and I need to meet with you to discuss several budget and staffing issues that need relatively immediate attention:

1. Office of Administration has told me they cannot approve Cathy's title and pay changes until they say a breakdown of what you plan to do on the White House payroll side. Basically, they want to be certain that we are not going over our current White House budget. I can give them the sheets I prepared for you last week, that show all the movements on that side of the budget. That should take care of the problem in the short term.

2. In the longer term, both Elena and I believe it would be very useful if you met with Jody Torkelson later this week (maybe Friday?), to discuss your plans for the DPC. This would help buy in Jody, and help me in my efforts to get them to approve our requested personnel changes in a timely manner.

3. Michael Cohen seems to be closing in on two detailees from Education that he would like to bring over. Bill Kincaid and a support staffer. The problem is that we need to place them in offices. As my chart recommends, I would like to move them into the following suites. Kincaid into Elizabeth's office. Mike into Warnath's office. The support staffer would be placed into the office that Janet Abrams used to occupy. The problem, however, is that this requires a resolution of the Warnath and Drye matters. Elena and I believe we must begin to work on where to place Steve very soon. This would include talking to Nash and Justice ASAP, before all the good jobs are taken. But before we can begin on that effort, we need to understand what Steve is going to be interested in, and whether he will want to stay. This would require a conversation between you and Steve some time in the near future.

In the meantime, we can bring Mike's support staffer over and place her in Janet's old office whenever we are ready. However, we need to see how much she makes in salary in order to insure that it will fit within the detailee budget. I will ask Mike to find out this her salary info.

P6/(b)(6)

5. I need to know when Cynthia will be joining us. As the map I gave you Friday shows, I recommend putting her into room 213. We would then put Lyn next to here in Dorothy's office. This of course, would require we need to take the current support office, room 213, and move all

the interns out. We will probably have to temporarily stick the interns upstairs into 470.

6. Ashley from OA told me today that we cannot assume yet, for budgetary purposes, that we have the Ira and Mia slots. ???

7. Good news is that we have an office for Christa. I would recommend sticking her in Molly's old office.

8. I am getting the revised DPC budget for FY98 today. Elena and I would like to meet with you to discuss the budget and these other issues, if possible, Wednesday. Can I ask Cathy to set it up in your schedule?

Sorry for so much information, I know you are swamped with SOTU.

**TABLE 1**

<u>Current Staffer</u>	<u>Salary</u>	<u>New Staffer</u>	<u>Salary</u>	<u>Carryover</u>
Carol Rasco (Ass't to POTUS)	\$125,000	Jose Cerda (SAP to POTUS)	\$85,000	\$40,000
Jeremy Ben-Ami (DAS to POTUS)	\$100,000	Elena Kagan (DAS to POTUS)	\$110,000	\$30,000
Chris Jennings (SAP to POTUS)	\$95,000	Chris Jennings (DAS to POTUS)	\$99,875	\$25,125
Jill Pizzuto (Ass't to CHR)	\$31,500	Cathy Mays (Exec. Ass't. BNR)	\$50,000	\$6,625
Molly Brostrom (S. Policy Analyst)	\$60,000	Mike Warren (Assoc. Director)	\$66,625	\$0
Patsy Fleming (AIDS Czar)	\$112,000	Open (AIDS Czar)	\$112,000	\$0
Jeffrey Levi (AIDs Deputy)	\$82,000	Open (AIDS Deputy)	\$82,000	\$0

Table 1 Carryover----->\$0

\*\*All the above are paid from the White House Account

---

**TABLE 2**

<u>Current Staffer</u>	<u>Salary</u>	<u>New Staffer</u>	<u>Salary</u>	<u>Carryover</u>
Ira Magaziner (Senior Adviser)	\$110,000	Cynthia Rice (SAP to POTUS)	\$85,000	\$25,000
Debbie Fine (SAP to POTUS)	\$60,000	Tom Freedman (SAP to POTUS)	\$85,000	\$0
Pam Cicetti (Ass't to 1st Lady)	\$50,000	Nicole Rabner (1st Lady Policy)	\$25,000	\$0
New Slot	\$0	Sabrina (1st Lady Policy)	\$25,000	\$0

Table 2 Carryover----->\$0

\*\*All the above are paid from the White House Account

---

Remaining White House Salary Budget----->\$0

---

**TABLE 3**

<u>Current Staffer</u>	<u>Salary</u>	<u>New Staffer</u>	<u>Salary</u>	<u>Carryover</u>
Mia Masten (Ass't Magaziner)	\$47,000	Thing 1 (Ass't to Kagan)	\$40,000	\$7,000
Sandy Bublick Max (Ass't to Jennings)	\$45,000	Sara Bianchi (Policy Analyst)	\$40,000	\$12,000
Cathy Mays (Ass't to BNR)	\$38,500	Christa Robinson (Assoc. Director)	\$45,000	\$6,500
Dorothy Kraft (Ass't to Ben-Ami)	\$30,000	Thing 2 (Ass't to Ideas)	\$40,000	-\$3,500
Steve Warnath (Policy Analyst)	\$65,000	Thing 3 (Crime/Welfare)	\$40,000	\$21,500
Elizabeth Drye (COS)	\$75,000	Elizabeth Drye (Assoc. Director)	\$75,000	\$21,500
Paul Weinstein (SAP to POTUS)	\$75,000	Paul Weinstein (SAP to POTUS &COS)	\$85,000	\$11,500
Lyn Hogan (Sen. Pol. Analyst)	\$50,000	Lyn Hogan (Assoc. Director)	\$50,000	\$11,500
Leanne Shimabukuro (Policy Analyst)	\$45,000	Leanne Shimabukuro (Assoc. Director)	\$45,000	\$11,500
Diana Fortuna (Sen. Pol. Analyst)	\$75,000	Diana Fortuna (Senior Director)	\$75,000	\$11,500
Jennifer Klein (SAP to POTUS)	\$75,000	Jennifer Klein (SAP to POTUS)	\$80,000	\$6,500

Unallocated FY97 Budget----->\$32,312

Plus Surplus From Reorganization----->\$38,812

\*\*All the above are paid from the OPD account.

---

Remaining OPD Budget----->\$38,812

---

**TABLE 4**

<u>Detailees</u>	<u>DPC Share</u>	<u>New Staffer</u>
Dennis Burke (Justice)	\$50,907	Nicholas Guess (Senior Director for Crime) Justice Detailee
Michael Cohen (Education)	\$41,526	Same
Claudia Williams (USDA)	\$0	Bill Kincaid (Senior Director for Education) Education Detailee
Diane Regas EPA	\$0	Thing 5 (Policy Assistant) Education Detailee
Jeanine Smart (HHS)	\$0	Think Tank Detailee or Education Detailee
Open	\$0	Thing 4 (Policy Assistant) HHS Detailee (?)

Total Allocated Detailee Budget----->\$92,433  
FY97 Detailee Budget----->\$234,750  
Unallocated Detailee Budget----->\$142,317

---

Remaining Detailee Budget----->\$142,317

---



**DPC TEAMS**

**Management**

Bruce Reed  
Assistant to the President for Domestic Policy

Elena Kagan  
Deputy Assistant to the President for Domestic Policy

Paul Weinstein  
Special Assistant to the President for Domestic Policy  
& Chief of Staff

Christa Robinson  
Associate Director For Communications & Event Coordination

Cathy Mays  
Executive Assistant

Thing

**Health Care**

Chris Jennings  
Deputy Assistant to the President for Health Care Policy

Jean Lambrew  
Senior Director for Health Care Policy (NEC)

Sara Bianchi  
Policy Analyst

Thing 4 (Detailee)  
Policy Assistant

**Policy Planning**

Tom Freedman  
Special Assistant to the President for Policy Planning

Michael Warren  
Senior Director For Policy Planning

Elizabeth Drye  
Associate Director For Policy Planning

Thing 2  
Policy Assistant

Need two?

## **Crime, Drug, Immigration, Community Development**

**Jose Cerda**

Special Assistant to the President for Crime, Drug, Immigration, & Community Development Policy

**Nick Guess**

Senior Director for Crime, Drug, Immigration, & Community Development Policy

**Leanne Shimabukuro**

Associate Director for Crime, Drug, Immigration, & Community Development Policy

**Thing 3 (Welfare & Crime)**

Policy Assistant

## **Welfare Reform**

**Cynthia Rice**

Special Assistant to the President for Welfare Reform

**Diana Fortuna**

Senior Director for Welfare Reform

**Lyn Hogan**

Associate Director for Welfare Reform

(See Thing 3)

## **Education**

**Michael Cohen**

Special Assistant to the President for Education Policy

**Bill Kincaid**

Senior Director for Education Policy

**Thing 5 (Detailee)**

Policy Assistant

**Education Detailee**

Associate Director for Education Policy

## **Special Projects**

**Jennifer Klein**

Special Assistant to the President for Special Projects

**Nicole Rabner**

Associate Director for Special Projects

**Sabrina (?)**

Associate Director for Special Projects

January 31, 1997

MEMORANDUM FOR ASHLEY RAINES

FROM: Paul Weinstein

SUBJECT: FY98 Domestic Policy Council Budget

I have discussed with Bruce Reed the proposed FY98 budget prepared by the Office of Administration (OA). After a careful review, he would like to see the following budget items reconsidered and adjusted upwards in order to insure equity and to offset discrepancies in the salary levels between the National Economic Council (NEC) and the Domestic Policy Council (DPC) (see attached sheet).

Salaries

The proposed budget prepared by OA would provide NEC with a \$64,123 increase in the FY98 budget over the FY97 budget. The increase for the DPC is only \$902. We do not believe this is equitable.

Bruce Reed wants to raise salaries across the board for DPC staff FY98 so that they are approximately equivalent to NEC staff salaries. This would necessitate the following increases:

	Current Title	FY96	Future Title	FY98
· Bullick-Max Slot	Policy Analyst	\$45,000	Assoc. Director	\$70,000
Drye Slot	Sen. Pol. Anal.	\$75,000	Director	\$80,000
Fortuna Slot	Sen. Pol. Anal.	\$75,000	Director	\$80,000
Hogan Slot	Sen. Pol. Anal.	\$50,000	Director	\$80,000
Karayannis Slot	Executive Asst.	\$30,000	Assistant	\$40,000
Klein Slot	SAP to POTUS	\$75,000	SAP to POTUS	\$90,000
Masten Slot	Staff Asst.	\$47,000	Assistant.	\$40,000
Mays Slot	Staff Asst.	\$38,500	Executive Asst.	\$45,000
Shimabukuro Slot	Policy Analyst	\$45,000	Assoc. Director	\$70,000
Warnath Slot	Policy Analyst	\$65,000	Director	\$80,000
Weinstein Slot	SAP to POTUS/ Chief of Staff	\$75,000	SAP to POTUS/ Chief of Staff	\$90,000
Totals		\$620,500		\$765,000

We of course understand with only a 4% increase in the OPD budget for FY98, we cannot meet our desired total salary estimate of \$765,000. However, our staffing needs would require at least half of the proposed increase in the combined NEC and DPC budgets for FY98 (\$35,512.50).

## Special Personnel Services

We expect detailees to fall into the following salary ranges in FY97 and FY98:

	Salary	DPC Share
Cohen Slot	\$120,866	\$60,433
Burke Slot	\$80,834	\$40,417
Williams Slot	\$80,000	\$40,000
Regas Slot	\$50,000	\$25,000
Smartt Slot	\$40,000	\$20,000
Open Slot	\$40,000	\$20,000
Totals		\$205,850

While our estimate for our detailee needs is \$28,900 below the FY97 enacted level, the estimate is \$33,748 above the amount budgeted for FY98. We would ask that some of the FY97 funds be added back to the FY98 request.

## Other Services

We expect the following individuals will need Lexis Nexis accounts for FY97 and FY98.

Elena Kagan

Paul Weinstein

One individual from Health Care Team.

One individual from Education Team.

One individual from Crime/Drug/Immigration/Community Empowerment Team.

One individual from Welfare Reform Team.

Four individuals from Policy Planning Team.

DPC staff would therefore require at least ten Lexis Nexis accounts.

## Supplies and Equipment

As you and I discussed yesterday, when you add White House employees to both the DPC and NEC payrolls, the percentage personnel ratio between the two staffs changes from 44% to 56% to 47% to 53%. Thus, the proposed FY98 equipment and supply budgets for DPC will make it difficult to accommodate all the needs of our staff. While Bruce certainly recognizes the political/congressional difficulties in changing the current ratios, we would appreciate any assistance relief from the proposed FY98 ratios.

cc: Bruce Reed  
Elena Kagan

THE WHITE HOUSE

WASHINGTON

January 31, 1997

MEMORANDUM FOR ASHLEY RAINES

FROM: Paul Weinstein

SUBJECT: FY98 Domestic Policy Council Budget

Bruce Reed and I have discussed the proposed FY98 budget prepared by the Office of Administration (OA). After a careful review, he would like to see the following budget items reconsidered and adjusted upwards in order to insure equity and to offset discrepancies in salary levels and other areas of the budget between the National Economic Council (NEC) and the Domestic Policy Council (DPC)

Salaries

The proposed budget prepared by OA would provide the NEC with a \$64,123 increase in the FY98 budget over the FY97 budget. The increase for the DPC is only \$902. Bruce does not believe this is workable nor equitable.

Bruce wants to raise salaries across the board for DPC staff in FY98 so that they are approximately equivalent to NEC staff salaries. This would necessitate the following increases:

	Current Title	FY96	Future Title	FY98
Public-Max Slot	Policy Analyst	\$45,000	Assoc. Director	\$55,000
Drye Slot	Sen. Pol. Anal.	\$75,000	Director	\$80,000
Fortuna Slot	Sen. Pol. Anal.	\$75,000	Director	\$80,000
Hogan Slot	Sen. Pol. Anal.	\$50,000	Director	\$60,000
Karayannis Slot	Executive Asst.	\$30,000	Assistant	\$40,000
Klein Slot	SAP to POTUS	\$75,000	SAP to POTUS	\$90,000
Masten Slot	Staff Asst.	\$47,000	Assistant.	\$40,000
Mays Slot	Staff Asst.	\$38,500	Executive Asst.	\$45,000
Shimabukuro Slot	Policy Analyst	\$45,000	Assoc. Director	\$55,000
Warnath Slot	Policy Analyst	\$65,000	Director	\$70,000
Weinstein Slot	SAP to POTUS/ Chief of Staff	\$75,000	SAP to POTUS/ Chief of Staff	\$90,000
Totals		\$620,500		\$705,000
OA Proposed FY 98 Total For DPC				\$669,964
Difference Between DPC Request and OA Proposed FY98 Total For DPC				\$35,036

According to our estimates, our staffing needs would require half of the proposed increase in the combined NEC and DPC budgets for FY98 (\$35,512.50). This would greatly reduce the differential between NEC and DPC salary levels for comparable positions.

### Special Personnel Services

We expect DPC detailees to fall into the following salary ranges in FY97 and FY98:

	Salary	DPC Share
Cohen Slot	\$120,866	\$60,433
Burke Slot	\$80,834	\$40,417
Williams Slot	\$80,000	\$40,000
Regas Slot	\$50,000	\$25,000
Smartt Slot	\$40,000	\$20,000
Open Slot	\$40,000	\$20,000
Totals		\$205,850

While our estimate for our detailee needs is \$28,900 below the FY97 enacted level, the estimate is \$33,748 above the amount budgeted for FY98. We would ask that some of the FY97 funds be added back to the FY98 request.

### Other Services

We expect the following individuals will need Lexis Nexis accounts for FY97 and FY98.

Elena Kagan

Paul Weinstein

One individual from Health Care Team.

One individual from Education Team.

One individual from Crime/Drug/Immigration/Community Empowerment Team.

One individual from Welfare Reform Team.

Four individuals from Policy Planning Team.

DPC staff would therefore require at least ten Lexis Nexis accounts.

### Supplies and Equipment

As you and I discussed yesterday, when you add White House employees to both the DPC and NEC payrolls, the percentage personnel ratio between the two staffs changes from 44% to 56% to 47% to 53%. Thus, the proposed FY98 equipment and supply budgets for DPC will make it difficult to accommodate all the needs of our staff. While Bruce certainly recognizes the political/congressional difficulties in changing the current ratios, we would appreciate any assistance your office could provide in altering the ratios to so that they reflect the number of White House personnel working for the DPC and the NEC.

1/6 Carol/Tome/Me/Eliz - Day mtg.

Diana - not going to Ed.

Child welfare - not just adoptive ed. performance

Waiwas - 10 - perfect opportunity

Rural development - Diane R.

Diana - to do with imp mtgs. (if I was to go - OK)

Staff mtg - tomorrow noon. Last one.

Non Routine incoming mtgs -

1 x 2 who

implementation issues.

SPK - thought needed

1. - mtgs??
2. - decisions - staff?? -> to Bob
- 3.

America Reads

mtg then every 2-3 who

Mike Cohen - will handle.

Not Gene - convince him.

Molly - what happens to housing issues??

Patsy/MTDs - leaving in February.

Being handled by personnel

Bob has list

Pej - Paul Richard.

More other inside complex?

They also have "agency rep" under VP?? < They will ask for bigger staff.

Both - super good in health. will come back to DPC if other two MTDs

Rob Reiner

0-3

want something to  
happen in high-SPK  
week in April.

Should get commitment to do  
something this week.



EDUC

5@ 223

~~4@ D~~

Mike

S/A

3@ D from DoEd -

Crime / Immig.

~~Deants~~

Liz F. 75 S/A

Thing 1

ID/DOJ

2@ 2D  
2@ 133  
1@ 103

WR

Diana

Lyn

Cynthia (Janine)

S/A

Liz F. (Fos)

Emily

A/A

H/A

HC

Chris

D/A

Jean  
NEC: ~~base~~ #

Eliz (until 7/97) (Jen Klein) (S/A)

IDEAS

Tom F. / JP

S/A

PJW

S/A

Thing 2+3

Emily B.

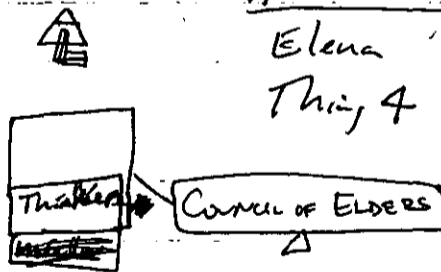
S/A

High-Powered Deputy

Elena

D/A

Thing 4



SUPPORT

Cathy

Mia

Jill P. (support HC + WR)

FAMILY  
TECH.  
EMIR.

→ Mtg w/ Bob Nash

## DPC STAFF BUDGET

### I. Current Level

OPD	\$650,812 (authorized)
WHO	\$955,500
<b>TOTAL</b>	<b>\$1,606,312</b>

[NEC total: \$1,881,000 (OPD -- \$1,342,000; WHO \$539,000)]

### II. Non-DPC staff on DPC payroll

Ira Magaziner	110,000
Mia Masten	47,000
Patricia Fleming	112,000
Jeff Levi	82,000
Debbie Fine	60,000
Jen Klein	75,000
Pam Cicetti	50,000

7@ \$536,000 [one-third of DPC budget]

### III. Proposed Organization

#### A. Personnel

1. Deputies: Elena Kagan (new hire); Chris Jennings (now Special Asst.)
2. Special Assistants
  - Current: Paul Weinstein (who will become chief of staff), Mike Cohen
  - New (not yet offered): Cynthia Rice, Tom Friedman
  - Possible (if I had the slots and \$): Liz Fine, Emily Bromberg, 1-2 big

thinkers

3. Policy Analysts
  - Replace 3 mid-level analysts with 4 Jason Goldbergs
  - Replace 3 current detailees with 3 Education detailees

#### B. Structure

-- Overview: 4 policy teams on key priorities (education, health care, crime, welfare) and an ideas shop / think tank .

1. Education Team: headed by Mike Cohen, with 3 DoEd detailees
2. Health Care Team: headed by Chris Jennings, with 1 DPC staffer and 1 NEC staffer
3. Welfare Team: headed by Cynthia Rice (tentative), with 2 current DPC staffers
4. Crime/Drugs/Immigration: headed by Liz Fine (proposed), with 1-2 DPC staffers
5. Ideas Shop: headed by Tom Friedman (tentative), with 1-2 big thinkers (proposed), 2 Jason Goldbergs, and Emily Bromberg (proposed)

January 7, 1997

MEMORANDUM FOR BRUCE REED

FROM: Paul Weinstein

SUBJECT: Comparative Profile Of DPC And NEC Salary Structures

**Domestic Policy Council**

Average Salary(Total) - \$71,636

Average Salary(OPD) - \$56,409

Average Salary(WH) - \$86,863

Average Salary(Special Ass't) - \$81,666

Average Salary(Other Policy) - \$60,000

Average Salary(Support) - \$39,400

Total Personnel Budget - \$1,606,312

Unspent OPD Personnel Budget - \$30,312

Staff(Including Detailees) - 28

OPD Payroll - 11

White House Payroll - 11

Detailees - 6

**National Economic Council**

Average Salary(Total) - \$80,301

Average Salary(OPD) - \$71,036

Average Salary(WH) - \$89,833

Average Salary(Special Ass't) - \$96,000

Average Salary(Other Policy) - \$71,036

Average Salary(Support) - \$34,420

Total Personnel Budget - \$1,881,188

Unspent OPD Personnel Budget - \$34,248

Staff(Including Detailees) - 26

OPD Payroll - 20

White House Payroll - 6

Detailees - 0

**NEC - FY 1997 PERSONNEL SALARIES**  
*As of December 16, 1996*

**Office of Policy Development Employees:**

Abernathy, Pauline	\$60,000
Brainard, Lael	\$85,000
Chamovitz slot (was \$31,415)	
Deich slot (was \$94,000)	
Dimond, Paul	\$94,000
Einhellig, Wendy	\$36,565
Goldberg, Jason	\$40,000
Green, Melissa	\$32,000
Holstein, Etwood	\$100,000
Joshlyn, Gay	\$30,000
Kalil, Thomas A.	\$85,000
Kyle, Robert	\$100,000
Lee, Malcolm	\$85,000
Matthews, Sonyia	\$32,960
Mazur, Mark	\$85,000
Orszag slot (was \$37,000)	
Panerali, Kristen	\$39,000
Robyn, Dorothy	\$94,000
Seidman, Ellen	\$94,000
Vamey, Kevin	\$90,000

**White House Office Employees:**

O'Donnell, Thomas	\$100,000
Sperling, Gene	\$105,000
Tarullo, Dan	\$110,000
Tyson, Laura	\$125,000
Warren, Michael	\$60,000
Weinstein, Dena	\$39,000

<b>TOTAL</b>	<b>\$539,000</b>
--------------	------------------

<b>TOTAL</b>	<b>\$1,182,525 (NOT ANNUALIZED TOTAL - ONLY BASE SALARIES)</b>
<b>Total Current FTE's</b>	<b>17</b>

FY 1997 Authorized Personnel Budget	\$1,342,188
FY 1997 Authorized FTE's	20

**NEC - FY 1996 PERSONNEL**

*As of February 8, 1996*

**Office of Policy Development Employees:**

Abernathy, Pauline	\$60,000
Brainard, Lael	\$85,000
Chamovitz, Julia	\$31,415
Deegan, Paul	\$48,000 ←
Deich, Michael	\$94,000
Dimond, Paul	\$94,000
Einhellig, Wendy	\$36,565
Goldberg, Jason	\$40,000
Holstein, Elwood	\$100,000
Joshlyn, Gay	\$30,000
Kyle, Robert	\$100,000
Lane, David	\$88,000
Lindemuth, Elisabeth	\$43,260
Matthews, Sonyia	\$32,960
Mazur, Mark	\$85,000
Orszag, Jonathon	\$37,000
Robyn, Dorothy	\$94,000
Seidman, Ellen	\$94,000
Taberski, Daniel	\$32,000

**TOTAL** \$1,225,200  
**Total Current FTE's** 19

**White House Office Employees:**

Cutter, Bowman	\$110,000
→ Kalil, Thomas	\$70,000
O'Donnell, Thomas	\$100,000
Sperling, Gene	\$105,000
Tyson, Laura	\$125,000
Weinstein, Dena	\$36,000
<b>TOTAL</b>	<b>\$546,000</b>

FY 1996 Authorized Personnel Budget \$1,342,188  
 FY 1996 Authorized FTE's 20

37

Detailees: Reimbursable Amount  
 Dorval, Chris \$69,056.60

FY 1996 Authorized Reimbursable Detail Budget \$123,000  
 FY 1996 Authorized OGE's 2

1,946 + 492 B

**National Economic Council**  
**FY 1997 Projection with 3 Vacancies**  
 Salaries and Benefits  
 As of December 16, 1996

<u>NEC Staff</u>	<u>Pay Period #Z</u>			<u>Total Salary</u>	<u>Total Benefits</u>
	<u>Salary</u>	<u>Benefits</u>	<u>Total</u>		
Abernathy, Pauline	\$2,300.00	\$592.42	\$2,892.42	\$60,030.00	\$15,462.16
Brainard, Lael	\$3,258.40	\$512.80	\$3,771.20	\$85,044.24	\$13,384.08
Chamovitz replacement					
Deich replacement					
Dimond, Paul	\$3,603.20	\$643.17	\$4,246.37	\$94,043.52	\$16,786.74
Einhellig, Wendy	\$1,401.60	\$340.31	\$1,741.91	\$36,581.76	\$8,882.09
Goldberg, Jason	\$1,533.60	\$433.82	\$1,967.42	\$40,026.96	\$11,322.70
Green, Melissa (Taberski replacement)	\$1,226.40	\$236.44	\$1,462.84	\$32,009.04	\$6,171.08
Holstein, Elwood	\$3,833.60	\$779.07	\$4,612.67	\$100,056.96	\$20,333.73
Joshlyn, Gay	\$1,149.60	\$285.15	\$1,434.75	\$30,004.56	\$7,442.42
Kalil, Thomas	\$3,258.40	\$628.08	\$3,886.48	\$85,044.24	\$16,392.89
Kyle, Robert	\$3,833.60	\$723.58	\$4,557.18	\$100,056.96	\$18,885.44
Lee, Malcolm (Froman replacement)	\$3,258.40	\$628.08	\$3,886.48	\$85,044.24	\$16,392.89
Matthews, Sonyia	\$1,263.20	\$425.78	\$1,688.98	\$32,969.52	\$11,112.86
Mazur, Mark	\$3,258.40	\$720.82	\$3,979.22	\$85,044.24	\$18,813.40
Orszag replacement					
Panerali, Kristen (Lindemuth replacement)	\$1,495.20	\$417.15	\$1,912.35	\$39,024.72	\$10,887.62
Robyn, Dorothy	\$3,603.20	\$704.68	\$4,307.88	\$94,043.52	\$18,392.15
Seidman, Ellen	\$3,603.20	\$444.40	\$4,047.60	\$94,043.52	\$11,598.84
Varney, Kevin (Lane replacement)	\$3,449.60	\$876.50	\$4,326.10	\$90,034.56	\$22,876.65
			<b>Total</b>	\$1,183,102.56	\$245,137.73
<u>Lump Sum Leave Paid</u>					
Chamovitz	\$812.70	\$62.17	\$874.87	\$812.70	\$62.17
Orszag	\$460.98	\$35.26	\$496.24	\$460.98	\$35.26
Taberski	\$1,308.06	\$100.07	\$1,408.13	\$1,308.06	\$100.07
			<b>Total</b>	\$2,581.74	\$197.50
			<b>Total</b>	\$1,185,684.30	\$245,335.23
			<b>FY97 Personnel Budget</b>	\$1,342,188.00	\$301,500.00

<u>NEC OGE's</u>	<u>Salary</u>	<u>Reimb. Sal.</u>	<u>Reimb. Ben.</u>	<u>Reimb. Total</u>	
Atkin, Jennifer		\$0	\$0	\$0	Women's Executive Leadership Program - doesn't count against allowed OGE
Dorval, Christopher	\$122,000	\$35,389	\$8,847	\$44,237	detail expires 12/31/96
Quint-Moran, Betsy		\$0	\$0	\$0	Women's Executive Leadership Program - doesn't count against allowed OGE
	<b>Total</b>	\$35,389	\$8,847	\$44,237	
	<b>Total Current OGE's</b>			1	
	<b>FY97 Detailee Budget</b>			\$78,250	
	<b>FY 1997 Authorized OGE's</b>			2	

December 21, 1996

MEMORANDUM FOR BRUCE REED

FROM: Elizabeth Drye

SUBJECT: DPC Budget, Staff and Activities

Attached are a description of DPC's budget, OPD's budget document, and a list of current staff. Also attached is a list of DPC's accomplishments and plans I recently assembled with the staff for Carol. It is simply an inventory and does not reflect any serious strategic thinking, but I thought it might be helpful. One caution -- since we prepared it quickly prior to Carol's resignation, it doesn't necessarily reflect how staff would characterize their plans to you if asked.

I hope this is helpful.



**DPC BUDGET  
FY97**

**Background**

DPC's budget comes from two sources. DPC shares the Office of Policy Development (OPD) Congressional appropriation with NEC (attached). DPC also has a share of the White House salary budget and FTE allocated at the discretion of the COS.

The White House can divide OPD funds and FTE between NEC and DPC however it chooses. The allocation has been consistent over the past three years, with NEC receiving a greater share of the salary budget, FTE, and travel funds. Congress is requiring us to prepare separate budgets for DPC and NEC in FY98, so agreements on how to split the OPD budget will be binding for the first time in this budget cycle.

*Handwritten:* ~~XX~~  
→ Ask  
OMB

The OPD budget breaks down by "object class" (line item) as outlined below. Our ability to move money between object classes is limited. We can reprogram up to \$50,000 over the authorized level in all object classes except travel.

**OPD Budget for FY97**

	Total	DPC (by agreement)	
Salaries:	\$2,018,000	\$650,812	
Benefits:	450,000	148,500	*about 24% of salaries
Salaries/Benefits for detailees	313,000	234,750	*DPC has 3/4 detailees
Travel	160,000	50,000	
Rent	540,000		
Other expenses (supplies/util/ equipment/etc.)	366,000		*7 object classes
Authorized FTEs:	(31)	(11)	
Detailees:	8	6	*Can be changed w/out Congressional approval

**DPC White House-allocated salary dollars and FTE**

FTE: 11  
Salaries: \$955,550

**Total DPC Budget for Salaries and FTE**

Regular Employees:	Salaries	FTE	
OPD	\$650,812	11	
WH	955,500	11	
Detailees	234,750*	6	*includes \$ for benefits; WH pays up to half of detailee salary/benefits

Attached is a list of current DPC staff and their salaries. Note that several of the White House-funded staff, while technically part of the DPC, serve clearly defined roles:

- Patsy Fleming and Jeff Levi are and were, respectively, the Director and Deputy Director of the Office of National AIDS Policy (Patsy has resigned but will stay until we appoint a new Director);
- Jennifer Klein works primarily for the First Lady (Jen is on maternity leave; Pauline Abernathy is filling in for Jen through February at NEC's expense);
- Pam Cicetti works exclusively for the First Lady;
- Ira Magaziner works independent of the DPC (his assistant, Mia Masten, is on DPC's payroll);
- Debbie Fine is DPC's liaison to Political Affairs.

Needless to say, the AIDS slots have to be used for AIDS, or they will be moved elsewhere (some are suggesting ONAP should report to the VP). The same is presumably true about the two FLOTUS positions).

**DPC - FY 1997 PERSONNEL**  
As of December 20, 1996

Office of Policy Development Employees:

Bublick-Max, Sandra	\$45,000
Drye, Elizabeth	\$75,000
Fortuna, Diana	\$75,000
Hogan, Lyn	\$50,000
Karayannis, Dorothy	\$30,000
Klein, Jennifer	\$75,000
<b>Masten, Mia</b>	\$47,000
Mays, Cathy	\$38,500
Shimabukuro, Leanne	\$45,000
Wamath, Stephen	\$65,000
Weinstein, Paul	\$75,000

White House Office Employees:

Ben-Ami, Jeremy	\$100,000
Brostrom, Molly	\$65,000
Cicetti, Pamela	\$50,000
Fine, Deborah	\$60,000
<b>Fleming, Patricia</b>	\$112,000
Jennings, Christopher	\$95,000
<b>Levi, Jeffrey</b>	\$82,000
<b>Magaziner, Ira</b>	\$110,000
Pizzuto, Jill ?	\$31,500
Rasco, Carol	\$125,000
Reed, Bruce	\$125,000

**TOTAL \$955,500**

**TOTAL \$620,500 (NOT ANNUALIZED TOTAL - ONLY BASE SALARIES)**  
**Total Current FTE's 11**

FY 1997 Authorized Personnel Budget \$650,812  
FY 1997 Authorized FTE's 11

<i>DPC Reimbursable Details</i>	<i>Salary</i>	<i>Expiration</i>	<i>Reimb. Sal.</i>	<i>Reimb. Ben.</i>	<i>Reimb.Total</i>
Burke, Dennis	\$80,834	9/30/97	\$40,726	\$10,181	\$50,907
Cohen, Michael	\$120,886	7/1/97	\$33,221	\$8,305	\$41,526
Rayford-Williams, Claudia	\$78,385	1/31/97	\$0	\$0	\$0
Regas, Diane	\$83,284	3/28/97	\$0	\$0	\$0
Smartt, Jeanine (PMI)	\$30,658	12/31/96	\$0	\$0	\$0
			<b>Total</b>	<b>\$73,946</b>	<b>\$18,487</b>
			<b>Total Current OGE's</b>		<b>4</b>
			<b>FY97 Detailee Budget</b>		<b>\$234,750</b>
			<b>FY 1997 Authorized OGE's</b>		<b>6</b>

**DPC STAFF**

**Molly Brostrom**

Senior Policy Analyst

Salary: \$65,000

Issues: Seniors, Veterans, Housing/Homelessness

**Sandy Bublick-Max**

Policy Analyst

Salary: \$45,000

Issues: Health Care

**Dennis Burke**

Senior Policy Analyst

Detaillee

Issues: Crime/Drugs

**Pam Cicetti**

Executive Assistant

Salary: \$50,000

(works for FLOTUS)

**Mike Cohen**

Special Asst. to the President

Detaillee

Issues: Education

**Dorothy Craft**

Executive Asst. to the Deputy Asst.

Salary: \$30,000

**Elizabeth Drye**

Chief of Staff

Salary: \$75,000

Issues: FDA Reform, Tobacco, Food Safety, Ag, Consumer Issues

**Debbie Fine**

Special Assistant to the President

Salary: \$60,000

(works for Political Affairs)

**Patsy Fleming (departing)**

Director, Office of National AIDS Policy

Salary: \$112,000

**Diana Fortuna**

Senior Policy Analyst

Salary: \$75,000

Issues: Welfare, Disability, Adoption, Medicaid/Welfare Waivers

**Lyn Hogan**

Senior Policy Analyst

Salary: \$50,000

Issues: Teen Pregnancy, Women's Issues, Child Welfare, Welfare  
to Work

**Chris Jennings**

Special Assistant to the President

Salary: \$95,000

Issues: Health Care

**Jennifer Klein**

Special Asst. to the President

Salary: \$75,000

Issues: FLOTUS policy support; Health Care w/Chris Jennings  
(Pauline Abernathy is filling in for her through February)

**Ira Magaziner**

Senior Advisor to the President

Salary: \$110,000

**Mia Masten**

Staff Asst. to Ira

Salary: \$47,000

**Jill Pizzuto**

Special Asst. to Carol (schedular)

Salary: \$31,500

**Claudia Rayford-Williams**

Special Asst. to Carol (detail expires 1/31/97)

Detailee

**Diane Regas**

Senior Policy Analyst

Detailee

Issues: Environment, Energy, Transportation

**Leanne Shimabukuro**

Policy Analyst

Salary: \$45,000

Issues: Crime, Drugs, Native Americans; also assists with office  
management

**Jeanine Smartt**

Policy Analyst

Detailee

Issues: Children and Families; Reinventing Government

**Steve Warnath**

Senior Policy Analyst

Salary: \$65,000

Issues: Immigration, Civil Rights, Other DoJ

**Paul Weinstein**

Special Asst. to the President .

Salary: \$75,000

Issues: Political/Gov't Reform, Econ/Community Development

# EXECUTIVE OFFICE OF THE PRESIDENT



## *OFFICE OF POLICY DEVELOPMENT*

*FISCAL YEAR 1997 BUDGET*

**TABLE OF CONTENTS**

**Executive Office of the President  
Office of Policy Development**

	<u>Page</u>
<b>MISSION STATEMENT . . . . .</b>	<b>97</b>
<b>SUMMARY OVERVIEW . . . . .</b>	<b>99</b>
<b>APPROPRIATION LANGUAGE . . . . .</b>	<b>101</b>
<b>PROGRAM AND PERFORMANCE . . . . .</b>	<b>101</b>
<b>PROGRAM AND FINANCING SCHEDULE . . . . .</b>	<b>102</b>
<b>OBJECT CLASSIFICATION . . . . .</b>	<b>104</b>
<b>DETAILED EXPLANATION OF CHANGES . . . . .</b>	<b>105</b>



## **MISSION STATEMENT**

### **Executive Office of the President Office of Policy Development**

**In fiscal year 1997, the Office of Policy Development (OPD) will continue to be composed of two policy groups: the Domestic Policy Council and the National Economic Council. These two groups are responsible for advising and assisting the President in the formulation, coordination, and implementation of economic and domestic policy. The Office of Policy Development also provides support for other policy development and implementation initiatives as directed by the President.**

**The two policy groups are responsible for ensuring coordination in the development and implementation of executive branch policy. While each group is distinct in its organization and operating methodology, both serve as a forum in which policy advice to the President can be considered and refined. The small size of the staff and the collegial environment encourage communication among policy experts, allowing issues particular to each group to be included in policy deliberations being led elsewhere in the Executive Office of the President or in executive branch departments or agencies.**

**The Domestic Policy Council oversees development and implementation of the President's domestic policy agenda. Established on August 16, 1993 by Executive Order 12859, the Council ensures coordination and communication between the heads of relevant federal offices and agencies.**

**The Domestic Policy Council provides a forum through which:**

- **Cabinet agencies with responsibility for components of the domestic agenda coordinate their work on key cross-cutting issues;**
- **decisions on policy of critical importance to the President can be debated, focused, and ultimately brought before the President for decision;**
- **communication is fostered on initiatives and issues affecting multiple agencies and;**
- **implementation of key Presidential initiatives is monitored.**

The National Economic Council was established on January 25, 1993 by Executive Order 12835.

The principal functions of the National Economic Council are to:

- coordinate the economic policy-making process with respect to the domestic and international economic issues;
- coordinate economic policy advice to the President;
- ensure that the economic policy decisions and programs are consistent with the President's stated goals, and ensure that those goals are being effectively pursued and;
- monitor implementation of the President's economic policy goals.

Funds appropriated to this account provide for necessary expenses of the Office of Policy Development, including services as authorized by 5 U.S.C. 3109 and 3 U.S.C 107.

#### **END-OF-YEAR SPENDING**

As directed by the House of Representatives Treasury, Postal and General Government Appropriations Subcommittee, OPD has established procedures to review and plan end-of-year spending. In past years, OPD has undertaken a review of year-end spending to ensure that funds are obligated not only for necessary items but also for those items proposed in the annual budget justification. This review typically begins early in the third quarter of each fiscal year with a review of needs and requirements for equipment, supplies, and services. A year-end spending plan is developed by the OPD Administrator and approved by all OPD directors. The OPD Administrator is accountable for all expenditures and is charged with the end-of-year spending review.

## SUMMARY OVERVIEW

### Executive Office of the President Office of Policy Development

The fiscal year (FY) 1997 budget request for the Office of Policy Development (OPD) is \$3,867,000 and 31 full-time equivalent (FTE) positions. This request reflects no change from the FY 1996 enacted level.

This budget request will provide full funding for payroll and other expenses necessary to support the two policy groups. Due to the nature and responsibilities of OPD, 72 percent of the total budget is for personnel costs. Compensation and benefits total \$2,801,000, a decrease of \$30,000 from the FY 1996 enacted level. This amount will provide resources for the compensation and benefits of 31 FTEs, as well as necessary special personal services payments.

Based on square foot usage and adjustments to joint-use costs, FY 1997 rent costs have been increased \$45,000. Travel funding has been decreased \$15,000 in order to meet administrative reductions and absorb increases in other object classes. No increases are requested for full-time permanent; other than full-time permanent; benefits for former personnel; transportation of things; communications, utilities, and miscellaneous charges; printing and reproduction; other services; supplies and materials; and equipment.

**SUMMARY OVERVIEW (FINANCIAL)**

**Executive Office of the President  
Office of Policy Development**

**Fiscal Year 1996 Appropriation** **\$3,867,000**

**Fiscal Year 1997 Increases/Decreases**

**Personnel Compensation and Benefits** **(\$30,000)**

**Rental Payments to GSA** **\$45,000**

**Other Current Services Level Decreases** **(\$7,000)**

**Administrative Reduction** **(\$8,000)**

**Fiscal Year 1997 Request** **\$3,867,000**

**Personnel (FTE) Summary**

**FY 1995 Actual** **32**

**FY 1996 Authorization** **31**

**FY 1997 Request** **31**

## **APPROPRIATION LANGUAGE**

**Executive Office of the President  
Office of Policy Development**

**Salaries and Expenses**

**For necessary expenses of the Office of Policy Development, including services as authorized by 5 U.S.C. 3109, and 3 U.S.C. 107; \$3,867,000. (*Executive Office Appropriations Act, 1996.*)**

## **PROGRAM AND PERFORMANCE**

**Executive Office of the President  
Office of Policy Development**

**The Office of Policy Development supports the Domestic Policy Council and the National Economic Council in carrying out their responsibilities to advise and assist the President in the formulation, coordination, and implementation of economic and domestic policy. The Office of Policy Development also provides support for other domestic policy development and implementation activities as directed by the President.**

Executive Office of the President  
Office of Policy Development  
Program and Financing Schedule  
(In Thousands of Dollars)

Identification Code 11-2200-0-1-802	FY 1995 Actual	FY 1996 Estimated	FY 1997 Estimated
<b><u>Obligations by program activity:</u></b>			
00.01 Direct program	3,932	3,867	3,867
01.01 Reimbursable program	85	318	0
10.00 Total obligations	4,017	4,185	3,867
<b><u>Budgetary resources available for obligation:</u></b>			
22.00 New budget authority (gross)	4,341	4,185	3,867
22.30 Unobligated balance expiring	-324	0	0
23.90 Total budgetary resources available for obligation	4,017	4,185	3,867
23.95 New obligations	-4,017	-4,185	-3,867
<b><u>New budget authority (gross), detail:</u></b>			
40.00 Appropriation	5,058	3,867	3,867
40.35 Appropriation rescinded	-12	0	0
41.00 Transferred to other accounts (11-1453)	-790	0	0
68.90 Spending authority from offsetting collections (total)	85	318	0
70.00 Total new budget authority (gross)	4,341	4,185	3,867
<b><u>Change in unpaid obligations:</u></b>			
72.40 Unpaid obligations, start of year: Obligated balance: Appropriation	1,892	1,146	838
73.10 New obligations	4,017	4,185	3,867
73.20 Total outlays (gross)	-4,626	-4,493	-4,015
73.40 Adjustments in expired accounts	-137	0	0
74.40 Unpaid obligations, end of year: Obligated balance: Appropriation	1,146	838	690

Executive Office of the President  
Office of Policy Development  
Program and Financing Schedule (Continued)  
(In Thousands of Dollars)

Identification Code 11-2200-0-1-802	FY 1995 Actual	FY 1996 Estimated	FY 1997 Estimated
<b><u>Outlays (gross), detail:</u></b>			
86.90 Outlays from new current authority	3,651	3,837	3,519
86.93 Outlays from current balances	<u>975</u>	<u>656</u>	<u>496</u>
87.00 Total outlays (gross)	4,626	4,493	4,015
<b><u>Offsets</u></b>			
88.00 Offsetting collections (cash) from:			
Federal sources	<u>85</u>	<u>318</u>	<u>0</u>
88.90 Total offsetting collections	85	318	0
<b><u>Net budget authority and outlays:</u></b>			
89.00 Budget authority	4,256	3,867	3,867
90.00 Outlays	4,541	4,175	4,015

Executive Office of the President  
Office of Policy Development  
Object Classification  
(In Thousands of Dollars)

	FY 1995 Actual	FY 1996 Estimated	FY 1997 Estimated
<b>Direct obligations:</b>			
<b>Personnel compensation:</b>			
Full-time permanent	2,036	2,018	2,018
Other than full-time permanent (consultants)	0	20	20
Special personal services payments	<u>170</u>	<u>385</u>	<u>313</u> -72
<b>Total personnel compensation</b>	<b>2,206</b>	<b>2,423</b>	<b>2,351</b>
Civilian personnel benefits	484	408	450 +42
Benefits for former personnel	5	0	0
Travel and transportation of persons	112	175	160 -15
Transportation of things	2	1	1
Rental payments to GSA	628	495	540 +45
Communications, utilities, and misc. charges	151	119	119
Printing and reproduction	43	36	36
Other services	147	75	75
Supplies and materials	95	60	60
Equipment	<u>59</u>	<u>75</u>	<u>75</u>
<b>Subtotal, direct obligations</b>	<b>3,932</b>	<b>3,867</b>	<b>3,867</b>
<b>Reimbursable obligations</b>	<b><u>85</u></b>	<b><u>318</u></b>	<b><u>0</u></b>
<b>Total obligations</b>	<b>4,017</b>	<b>4,185</b>	<b>3,867</b>



**DETAILED EXPLANATION OF CHANGES  
REQUESTED FOR FY 1997**

**Executive Office of the President  
Office of Policy Development**

**Justification of Changes by Object Class  
(In Thousands of Dollars)**

**Increases for Current Services and Request Level**

FY '96	FY '97	Net Change
--------	--------	------------

**Personnel Compensation and Benefits**

\$2,831	\$2,801	(\$30)
---------	---------	--------

The personnel category provides funding for all salaries, special personal services payments, and benefits. This will provide for staff of 31 FTE's plus detailees.

**Travel and Transportation of Persons**

\$175	\$160	(\$15)
-------	-------	--------

Travel resources are used to provide transportation and per diem for necessary invitational and staff travel. Travel funding was reduced in order to meet administrative reductions and absorb increases in other object classes.

FY '96	FY '97	Net Change
--------	--------	------------

**Transportation of Things**

\$1	\$1	\$0
-----	-----	-----

**This is an allowance for delivery charges and shipments. No increase is requested.**

**Rental Payments to GSA (RENT)**

\$495	\$540	\$45
-------	-------	------

**Funds in this category are used to pay GSA for office space. The net increase of \$45 is based on square foot usage and adjustments to joint-use costs.**

**Rent, Communications and Utilities (RCU)**

\$119	\$119	\$0
-------	-------	-----

**This line item provides for telephone service, utilities, and equipment leases. No increase is requested.**

**Printing and Reproduction**

\$36	\$36	\$0
------	------	-----

**Printing and reproduction resources are used for necessary printing, reproduction, binding, and related composition operations. No increase is requested.**

FY '96	FY '97	Net Change
\$75	\$75	\$0
<u>Other Services</u>		
This category provides funding for contractual services, maintenance contracts, repairs, computer services, and database subscriptions. No increase is requested.		
\$60	\$60	\$0
<u>Supplies and Materials</u>		
These funds are used to provide office supplies, subscriptions, and other specialized materials. No increase is requested.		
\$75	\$75	\$0
<u>Equipment</u>		
The equipment category provides for the equipment needs of the two policy groups. No increase is requested.		
\$3,867	\$3,867	\$0
<b>TOTAL FOR ALL OBJECT CLASSES</b>		

**Domestic Policy Council**

Assistant to the President for Domestic Policy  
Executive Assistant

**Welfare Reform**

Deputy (or Special) Assistant to the President  
& Senior Director for Welfare Reform Policy  
Associate Director  
Associate Director  
Support Staffer

**Crime, Drug, & Immigration**

Special Assistant to the President  
& Senior Director for Crime, Drug & Immigration Policy  
Associate Director  
Associate Director  
Support Staffer

**General Domestic Policy**

(Veterans, Homelessness, Aging Policy, Disability Policy)  
Associate Director  
(would report to one of the Deputies or the Chief of Staff).

**Education**

Deputy (or Special) Assistant to the President  
& Senior Director for Education Policy  
Special Assistant to the President  
Associate Director  
Support Staffer

**Health Care**

Deputy (or Special) Assistant to the President  
& Senior Director for Health Care Policy  
Special Assistant to the President  
Associate Director  
Support Staffer

**Policy Planning & Message**

Special Assistant to the President  
& Senior Director for Policy Planning & Message  
Associate Director

**Chief of Staff**

Special Assistant to the President  
& Chief of Staff of the Domestic Policy Council  
(Will also handle certain policy areas, ie. Political reform, Community Development, Liaison on environmental issues and Reinventing Government)  
Administrative Assistant/Support Staffer  
(to be shared with Policy Planning and General Domestic Policy Directorate staffs.)



Record Type: Record

To: See the distribution list at the bottom of this message  
cc: Bruce N. Reed/OPD/EOP, Elena Kagan/OPD/EOP  
Subject: New Procedures

**In order to insure better coordination and to reduce your workload, we are instituting the following procedures:**

- 1) All memorandums from DPC staff going to the President or Vice President -- including event briefings, backgrounders, etc. -- must first be reviewed by Bruce Reed and Elena Kagan;**
- 2) Any documents to be circulated to the press or the public by the White House Press or Communications Office must be cleared by Bruce Reed and Elena Kagan;**
- 3) Before taking on significant work requests from other White House Offices, clear the project with Elena Kagan. In the past, many of you have been swamped with requests for documents from Public Liaison, Press, Communications, Political, Legislative, NEC, etc. We want to make certain that your valuable time is not taken up with tasks that may not be necessary, do not require immediate attention, or are redundant. Therefore, Elena will work with you all in insuring that the project is relevant and necessary.**

Message Sent To:

Sarah A. Bianchi/OMB/EOP  
Pauline M. Abernathy/OPD/EOP  
Dennis K. Burke/OPD/EOP  
Michael Cohen/OPD/EOP  
Elizabeth Drye/OPD/EOP  
Cathy R. Mays @ EOP @ LNGTWY  
Leanne A. Shimabukuro @ EOP @ LNGTWY  
Diana Fortuna/OPD/EOP  
Eric P. Goosby/OPD/EOP  
Lyn A. Hogan/OPD/EOP  
Christopher C. Jennings/OPD/EOP  
William R. Kincaid/OPD/EOP  
Jeanne Lambrew/OPD/EOP  
Nicole R. Rabner/WHO/EOP  
Diane C. Regas/OPD/EOP  
Cynthia A. Rice/OPD/EOP  
Christa Robinson/WHO/EOP  
Stephen C. Warnath/OPD/EOP

File -  
Administrati -