

SOCIAL SECURITY ADMINISTRATION

September 4, 2012

Commissioner
Michael J. Astrue

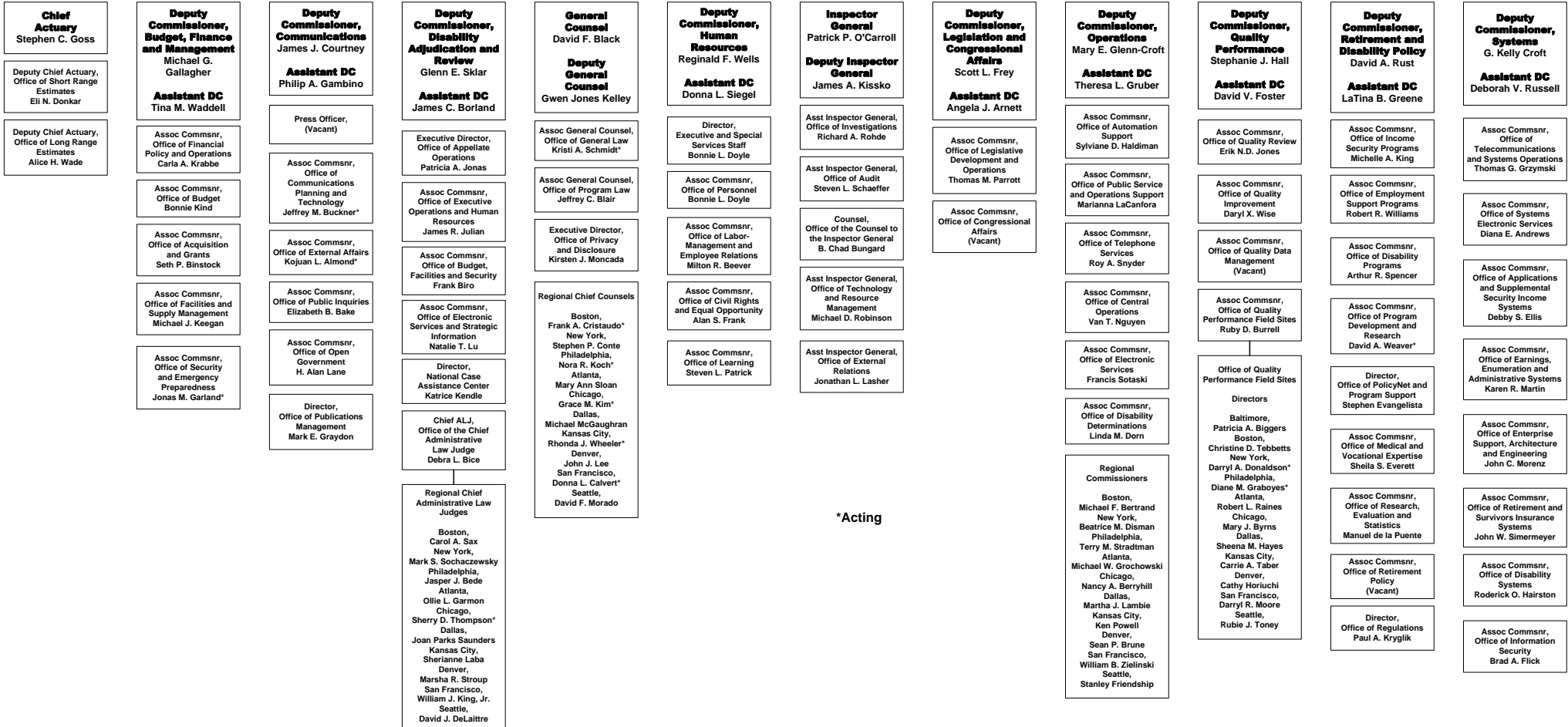
Deputy Commissioner
 Carolyn W. Colvin

Chief of Staff
 Jo Tittel

Deputy Chief of Staff
 Dean S. Landis

Executive Secretary
 Tiffany L. Flick*

Office of International Programs
 Georgina R. Harding*



*Acting