



## How to Apply the ENERGY STAR Certified Building Decal

	<b>Page</b>
Cyan-and-White Decal Instructions	
Application Instructions	2
How to Make a Glass Plaque	4
Cyan-and-White Paper Templates	5
“Etched-Look” Decal Instructions	
Application Instructions	7
How to Make a Glass Plaque	9
“Etched-Look” Paper Templates	10



# How to Apply the ENERGY STAR Cyan and White Certified Building Decal

## What's in this package:

Two sets of:

1. ENERGY STAR logo decal
2. "Certified Building" lettering decal, with thick white paper on one side and thin, semi-transparent paper on the other side.

Paper templates of logo and lettering

## What you'll need:

1. Level
2. Masking tape
3. Rubbing alcohol and a clean, soft cloth
4. Drivers license, credit card, or other rigid smoothing tool

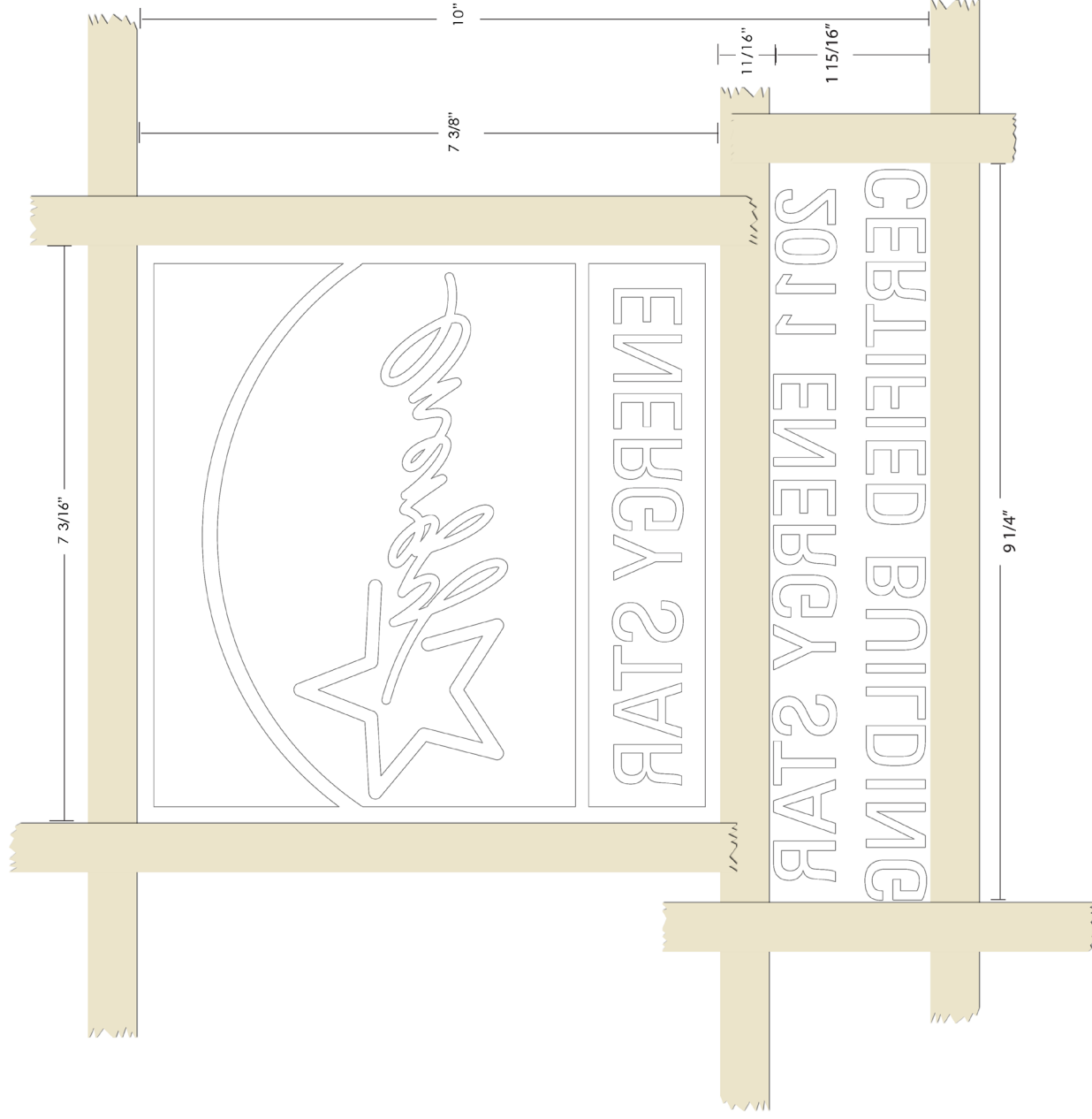


## Step 1: Prepare the glass

Standing inside your building, use a little rubbing alcohol and a clean cloth to clean the glass where the decal will be applied. Do not use Windex or other ammonia-based cleaners; the ammonia interferes with the adhesive.

## Step 2: Mark out the area

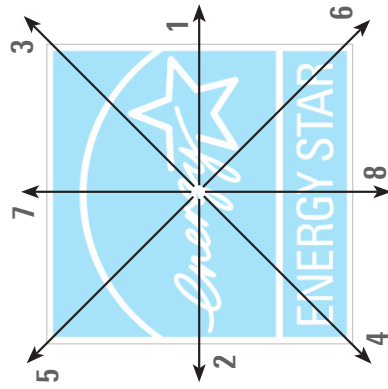
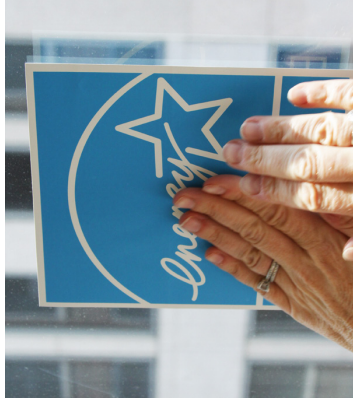
Standing inside your building and using a level, apply the enclosed paper templates and masking tape according to the diagram to the right. Remove and discard the paper templates once the masking tape is in place.



### Step 3: Apply the logo decal

#### Remove backing and gently affix

Remove the protective backing from the logo decal. Standing inside your building, use your fingertips to gently and minimally apply the center of the decal to the glass. Be sure to line up the edges of the decal with your masking tape border.



#### Smooth it out

Use a credit card to gently smooth the decal down against the surface of the glass. Start in the middle of the decal, then rub slowly and gently towards one side. Then go back to the middle and rub towards the opposite end. Continue in this fashion until you've smoothed out the entire decal.

#### Check for air bubbles

Go outside and look for air bubbles in the decal. If you find any, go back inside and use your credit card to smooth them towards the edge of the decal.

### Step 4: Apply the lettering decal

#### Remove thick backing paper

There is protective paper backing on each side of this decal. One is a thin, semi-translucent layer. The other is a thick, white paper. Remove the thick white paper VERY SLOWLY.

Sometimes the decal will want to stick to this thick paper more than the thin, semi-translucent paper. If this happens, use your finger to anchor the decal in place while you lift the backing off. (You may want to enlist a colleague with small fingers and lots of patience for this step!)

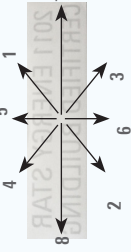


#### Apply decal

Standing inside your building, use a couple fingers to gently and minimally apply the center of the decal and semi-translucent backing to the glass. Be sure to line up the edges of the letters with your masking tape border.

Do not remove the backing.

#### Smooth it out



Use the edge of a credit card to gently smooth the decal down against the surface of the glass. Start in the middle of the decal, then rub slowly and gently towards one side. Then go back to the middle and rub towards the opposite end. Continue in this fashion until you've smoothed out the entire decal.

#### Check for air bubbles

Go outside and look for air bubbles in the decal. If you find any, go back inside and use your credit card to smooth them towards the edge of the decal.

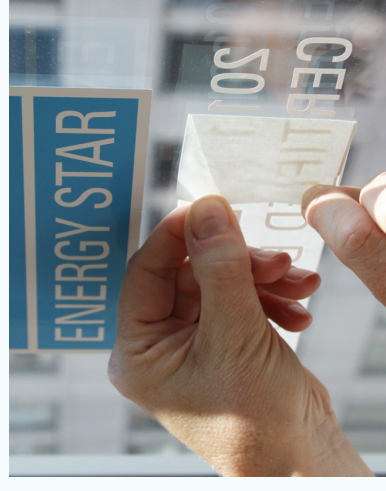
#### Remove backing

CAREFULLY and SLOWLY, remove the semi-translucent backing.

Sometimes the decal will want to stick to the backing more than the glass. If this happens, use your finger to anchor the decal in place while you lift the backing off.

### Step 5: Stand back and be proud!

You've just identified your building as one of the most energy efficient in the country!





# How to Make a Glass Plaque to Display Your Decal



## FOR REPLACEMENT OF OLD BRONZE PLAQUE (TO FIT EXISTING DRILL HOLES)

**Step 1:** Purchase four (4) "edge-grip standoffs." We recommend 3/4" diameter with satin/brushed aluminum finish\*. Must hold 1/4" -thick glass.

*\*NOTE: For outdoor installations, use stainless steel.*

*Samples:*

- [www.signsupportsystems.com/aluminum-edge-grips.html](http://www.signsupportsystems.com/aluminum-edge-grips.html)
- [www.signstandoffs.com/sign-standoffs-4.asp?ID=22920](http://www.signstandoffs.com/sign-standoffs-4.asp?ID=22920)
- [www.standoffsystems.com/catalog/edge-grips](http://www.standoffsystems.com/catalog/edge-grips)

**Step 2:** Install the four standoffs in your existing holes. Rotate so the slots are lined up and ready to hold a piece of glass by its top and bottom edge.

**Step 3:** Measure the vertical distance between the top and bottom slots and record the measurement in the blank below.

**Step 4:** Order a piece of glass from a local glass and mirror shop.

### Glass Specifications (recommended)

Size: 11" wide x \_\_\_\_\_" high  
 Thickness: 1/4"  
 Glass type: Clear  
 Edging: Flat polished edge

**Step 5:** Apply the decal to the back of the glass using the enclosed instructions.

**Step 6:** Install the glass and standoffs onto your wall using the instructions provided with the standoffs.

### Estimated costs

Glass: \$25 - \$40  
 Edge-grip standoffs (set of 4): \$15 - \$30

## FOR NEW INSTALLATIONS (NO PRE-EXISTING DRILL HOLES TO FIT)

**Step 1:** Order a piece of glass from a local glass and mirror shop.

### Glass Specifications (recommended)

Size: 11" wide x 12" high  
 Thickness: 1/4"  
 Glass type: Clear  
 Edging: Flat polished edge

**Step 2:** Purchase four (4) "edge-grip standoffs." We recommend 3/4" diameter with satin/brushed aluminum finish\*. Must hold 1/4"-thick glass.

*\*NOTE: For outdoor installations, use stainless steel.*

*Samples:*

- [www.signsupportsystems.com/aluminum-edge-grips.html](http://www.signsupportsystems.com/aluminum-edge-grips.html)
- [www.signstandoffs.com/sign-standoffs-4.asp?ID=22920](http://www.signstandoffs.com/sign-standoffs-4.asp?ID=22920)
- [www.standoffsystems.com/catalog/edge-grips](http://www.standoffsystems.com/catalog/edge-grips)

**Step 3:** Apply the decal to the back of the glass using the enclosed instructions.

**Step 4:** Place two standoffs along the top edge of the glass and two standoffs along the bottom edge. Measure the distances between the centers of all four standoffs. Use these distances to mark out four drill holes on your wall.

**Step 5:** Install the glass and standoffs onto your wall using the instructions provided with the standoffs.

### Estimated costs

Glass: \$25 - \$40  
 Edge-grip standoffs (set of 4): \$15 - \$30





# ENERGY STAR Certified Building Decals

Cyan-and-white ENERGY STAR logo template

Dimensions: 7-3/16" x 7-3/8"





# ENERGY STAR Certified Building Decals

White lettering template

Dimensions: 9-1/4" x 1-15/16"

CERTIFIED BUILDING  
ENERGY STAR





# How to Apply the ENERGY STAR "Etched-Look" Certified Building Decal

## What's in this package:

Two sets of:

1. ENERGY STAR logo decal, with thick white paper on one side and thin, semi-translucent paper on the other side.
2. "Certified Building" lettering decal, with thick white paper on one side and thin, semi-translucent paper on the other side.

Paper templates of logo and lettering

## What you'll need:

1. Level
2. Masking tape
3. Rubbing alcohol and a clean, soft cloth
4. Drivers license, credit card, or other rigid smoothing tool

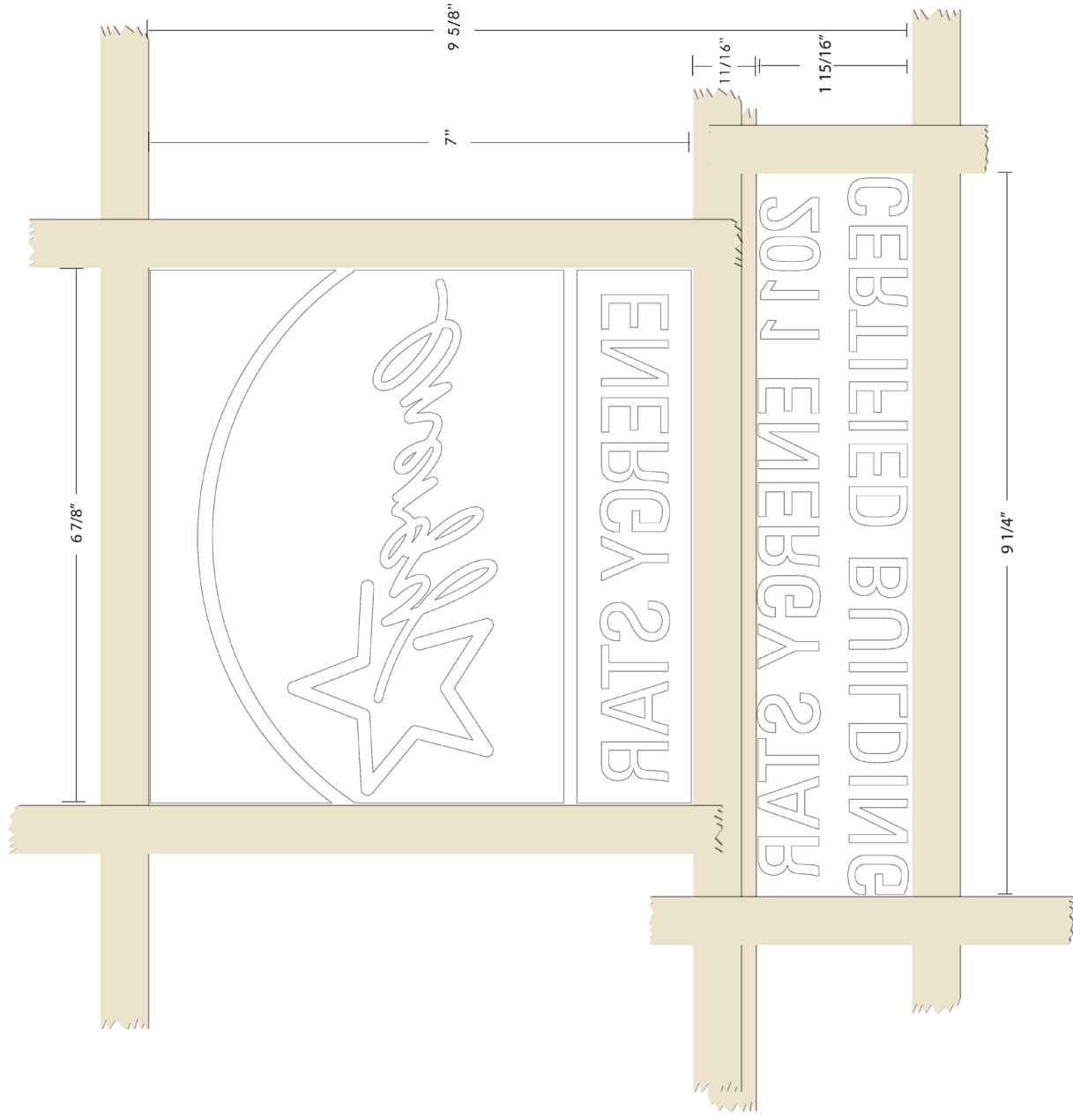


## Step 1: Prepare the glass

Standing inside your building, use a little rubbing alcohol and a clean cloth to clean the glass where the decal will be applied. Do not use Windex or other ammonia-based cleaners; the ammonia interferes with the adhesive.

## Step 2: Mark out the area

Standing inside your building and using a level, apply the enclosed paper templates and masking tape according to the diagram to the right. Remove and discard the paper templates once the masking tape is in place.



### Step 3: Apply the logo decal

#### Remove the thick protective backing

There is protective paper backing on each side of the decal. One is a thin, semi-translucent layer. The other is a thick, white paper.

Carefully and slowly, remove this thick white paper.

If part of the decal sticks to the thick paper as you peel it off, use your finger to anchor the decal in place while you continue to lift the backing off. (You may want to enlist a colleague with small fingers and lots of patience for this step!)

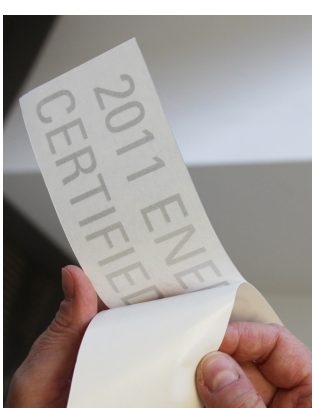


### Step 4: Apply the lettering decal

#### Remove the thick protective backing

Carefully and slowly, remove the thick white paper backing.

If one of the letters sticks to the thick paper as you peel it off, use your finger to anchor the decal in place while you continue to lift the backing off. (You may want to enlist a colleague with small fingers and lots of patience for this step!)



#### Apply decal

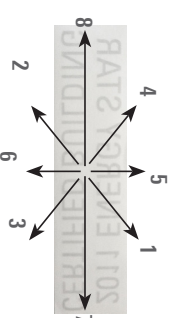
Standing inside your building, use a couple fingers to gently and minimally apply the decal with the semi-translucent backing to the glass directly underneath the logo. Be sure to line up the edges of the decal (not the backing) with your masking tape border. There should be about 3/8" between the bottom of the logo and the top of the letters. Do not remove the backing.



#### Smooth it out

Use the edge of a credit card to gently smooth the decal down against the surface of the glass.

Start in the middle of the decal, then rub slowly and gently towards one side. Then go back to the middle and rub towards the opposite end. Continue in this fashion until you've smoothed out the entire decal.



#### Check for air bubbles

Go outside and look for air bubbles in the decal. If you find any, go back inside and use your credit card to smooth them towards the edge of the decal.

#### Remove backing

CAREFULLY and SLOWLY, remove the semi-translucent backing. If the decal sticks to the backing as you peel it off, use your finger to anchor the decal in place while you continue to lift the backing off.

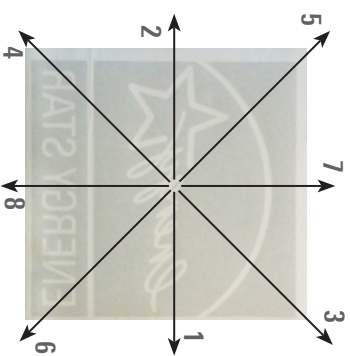


### Step 5: Stand back and be proud!

You've just identified your building as one of the most efficient in the country!

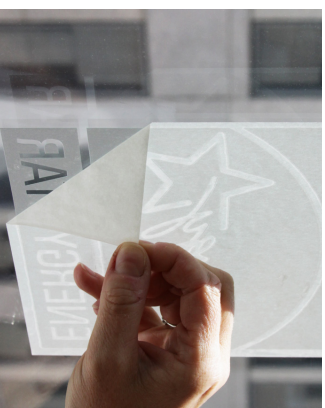
#### Remove backing

CAREFULLY and SLOWLY, remove the semi-translucent backing. If the decal sticks to the backing as you peel it off, use your finger to anchor the decal in place while you continue to lift the backing off.



#### Check for air bubbles

Go outside and look for air bubbles in the decal. If you find any, go back inside and use your credit card to smooth them towards the edge of the decal.







# How to Make a Glass Plaque to Display Your Decal



## FOR REPLACEMENT OF OLD BRONZE PLAQUE (TO FIT EXISTING DRILL HOLES)

**Step 1:** Purchase four (4) "edge-grip standoffs." We recommend 3/4" diameter with satin/brushed aluminum finish\*. Must hold 1/4" -thick glass.

*\*NOTE: For outdoor installations, use stainless steel.*

*Samples:*

[www.signsupportsystems.com/aluminum-edge-grips.html](http://www.signsupportsystems.com/aluminum-edge-grips.html)  
[www.signstandoffs.com/sign-standoffs-4.asp?ID=22920](http://www.signstandoffs.com/sign-standoffs-4.asp?ID=22920)  
[www.standoffsystems.com/catalog/edge-grips](http://www.standoffsystems.com/catalog/edge-grips)

**Step 2:** Install the four standoffs in your existing holes. Rotate so the slots are lined up and ready to hold a piece of glass by its top and bottom edge.

**Step 3:** Measure the vertical distance between the top and bottom slots and record the measurement in the blank below.

**Step 4:** Order a piece of glass from a local glass and mirror shop.

### Glass Specifications (recommended)

Size: 11" wide x \_\_\_\_\_" high  
Thickness: 1/4"  
Glass type: Clear  
Edging: Flat polished edge

**Step 5:** Apply the decal to the back of the glass using the enclosed instructions.

**Step 6:** Install the glass and standoffs onto your wall using the instructions provided with the standoffs.

### Estimated costs

Glass: \$25 - \$40  
Edge-grip standoffs (set of 4): \$15 - \$30

## FOR NEW INSTALLATIONS (NO PRE-EXISTING DRILL HOLES TO FIT)

**Step 1:** Order a piece of glass from a local glass and mirror shop.

### Glass Specifications (recommended)

Size: 11" wide x 12" high  
Thickness: 1/4"  
Glass type: Clear  
Edging: Flat polished edge

**Step 2:** Purchase four (4) "edge-grip standoffs." We recommend 3/4" diameter with satin/brushed aluminum finish\*. Must hold 1/4"-thick glass.

*\*NOTE: For outdoor installations, use stainless steel.*

*Samples:*

[www.signsupportsystems.com/aluminum-edge-grips.html](http://www.signsupportsystems.com/aluminum-edge-grips.html)  
[www.signstandoffs.com/sign-standoffs-4.asp?ID=22920](http://www.signstandoffs.com/sign-standoffs-4.asp?ID=22920)  
[www.standoffsystems.com/catalog/edge-grips](http://www.standoffsystems.com/catalog/edge-grips)

**Step 3:** Apply the decal to the back of the glass using the enclosed instructions.

**Step 4:** Place two standoffs along the top edge of the glass and two standoffs along the bottom edge. Measure the distances between the centers of all four standoffs. Use these distances to mark out four drill holes on your wall.

**Step 5:** Install the glass and standoffs onto your wall using the instructions provided with the standoffs.

### Estimated costs

Glass: \$25 - \$40  
Edge-grip standoffs (set of 4): \$15 - \$30





# ENERGY STAR Certified Building Decals

"Etched-look" ENERGY STAR logo template

Dimensions: 6-7/8" x 7"





# ENERGY STAR Certified Building Decals

"Etched-look" lettering template

Dimensions: 9-1/4" x 1-15/16"

CERTIFIED BUILDING  
ENERGY STAR

