



***Serving the Best Customers in
the World for Over 114 Years!***



For information or additional copies,
please contact Headquarters,
MPO DSN Commercial (214) 312-6627
TSgt. Angela S. Myles, USAF

Welcome to HQ AAFES

MILITARY NEWCOMER'S GUIDE
2010



Table of Contents

3	<i>Arrival</i>
4	<i>The Organization</i>
6	<i>Operational Chart</i>
8	<i>Missions</i>
9	<i>History</i>
10	<i>Serving You</i>
11	<i>Exchange Employees' Association (EEA)</i>
12	<i>Board of Directors</i>
	<i>Physical Fitness Testing</i>
	<i>Army Leave Process</i>
13	<i>Air Force Leave Web Policy</i>
14	<i>First Friday</i>
	<i>Air Force Promotion Testing</i>
15	<i>Support Military Installations</i>
	<i>Naval Air Station Joint Reserve Base Ft. Worth</i>
16	<i>DEERS & ID Card Location</i>
17	<i>Medical Care</i>
18	<i>Dallas Vehicle Processing Center</i>
	<i>Household Goods</i>
19	<i>Housing</i>
21	<i>Maps</i>
22	<i>Education</i>
23	<i>Local Attractions and Entertainment</i>

Arrival

Welcome to Headquarters, Army and Air Force Exchange Service located on the southwest side of Dallas at 3911 South Walton Walker Boulevard, Dallas TX 75236. Everyone assigned to HQ AAFES is required to in-process at the headquarters building in the Military Personnel Office (MPO), located on the fifth floor.

About Your Sponsor. Your sponsor is an important person who can help with everything from housing to in processing, and help you adjust to your new assignment. Sponsors are expected, at the least, to write, call, or email you concerning your new job and housing. Upon arrival, your sponsor will be able to assist you with in-processing and help you resolve any problems. Those individuals who have not received a sponsor from their inbound office should contact the Military Personnel Office at DSN 967-6627/967-6533 or Commercial (214) 312-6627/6533.

How to Get Here. If you're arriving by commercial airline, you will land at either the Dallas/Ft. Worth International Airport (DFW) or Dallas Love Field. Commercial taxi service is available from both airports. If traveling by car, follow the MAP (internal link) provided below. HQ AAFES' building is located about 1 mile North of I-20 and just off Highway Loop 12.

Parking. Use the gate to the south of the building to gain access. If you don't have a DoD decal on your vehicle, have your I.D. ready for validation. Tell the guard that you are a new employee and you will be directed to park in the visitor's parking lot immediately to the right of the entrance.

Vehicle Registration. To obtain a parking decal, which is required to park in several designated parking lots around the building, please bring a DoD I.D., valid driver's license, proof of insurance and registration to the Headquarters Facility Management Office. Once you've registered for your access badge, you may want to make sure you have authority to access the various parking lots.

Entry Control Point. Upon arrival you will need to be in uniform and to provide a copy of your orders and valid CAC card to receive a permanent access badge to enter the facility.

Entry for Family Members Family members have the option of receiving a permanent access badge to enter the facility to gain access to facility amenities (Shoppette, gym, restaurant, dry cleaners, food court. etc.) with a valid CAC card.

Duty Hours. Duty Hours are based on the needs of the Directorate, please see your sponsor or supervisor for more details.

Duty Uniforms & Personal Appearance. All Air Force members are required to wear "Blues" on Mondays. The Army will wear ACUs and the Air Force will wear ABUs as the standard uniform of the day. All military members are expected to maintain the appropriate standards according to their respective service directives.

CONTACT NUMBERS

Military Personnel Office	214-312-6627
Secretary of the Generals Staff.....	214-312-6750
Senior Enlisted Advisor	214-312-3051
Inclement Weather.....	1-800-442-0670

The Organization

There are 73 military authorizations in AAFES worldwide. Of those, 54 are located here at HQ AAFES. Here are some of the key leadership positions within AAFES:

The Commander. The Commander directs the organization within the guidelines established by Congress, Department of Defense and Departments of the Army and the Air Force. The Commander establishes corporate policy and philosophy, and commands through the Commanders, Overseas Regions (CDRs/ORs) and Senior Vice Presidents, U.S. Regions (SVPs/USRs), who are the principal operating officials. They manage as the Commander directs.

The Deputy Commanding General. The Deputy Commanding General helps the Commander direct the overall operations of AAFES and is the final decision authority for those activities (Resources Group) delegated as their responsibility by the Commander. In the Commander's absence, the Deputy Commanding General is the Acting Commander with full authority.

The Chief of Staff. Coordinates and integrated work of a general staff in a joint command headquarters controlling the corporate activities of a worldwide retail organization of more than 43,000 employees at over 3,100 facilities generating annual sales and revenues over \$10 billion. Serves as coordinating agent and advisor to the AAFES Commander and Deputy Commander. Ensures establishment of liaison with higher, collateral, and subordinate headquarters and organization. Responsible for the budgeting, personnel administration and morale, welfare and recreation for 3,200 military and civilians at the headquarters and Stoneridge locations.

The Senior Enlisted Advisor. The Senior Enlisted Advisor reports directly to the Commanding General. The Senior Enlisted Advisor acts as the voice of AAFES, traveling to military installations worldwide to educate with garrison and wing leadership, as well as customers about the exchange and benefits to our patrons. He also brings issues back to the command to be resolved/implemented.

The Organization

The Chief Operating Officer (civilian). The Chief Operating Officer helps the Commander direct the overall operation of AAFES. The Chief Operating Officer supervises those staff elements (Operations Group) that directly support retail and service activities in the field.

Directorates. The headquarters organization is divided into directorates. [Click here \(link\)](#) for directorate profiles. Some of the directorates are headed up by military personnel and some by civilian senior rate personnel. The directorates are as follows:

Chief of Staff (CS)	Audit (AU)
Logistics (LG)	Management Information Technology (IT)
Real Estate (RE)	Financial Management & Accounting (FA)
Loss Prevention (LP)	Corporate Planning & Comm. (PL)
Marketing (MK)	Procurement Support & Policy (PZ)
General Counsel (GC)	Human Resources (HR)
Sales (SD)	Inspector General (IG)

Department Heads. Senior Vice Presidents, Division Directors, and Special Staff (Inspector General and General Counsel) are our department heads. They are keys to the success of AAFES and our headquarters. They support the Commander, CDRs/ORs and SVPs/USRs, our primary operating officials.

Associates. In these facilities, AAFES employs more than 43,000 worldwide. Some 25 percent are military family members and four percent are active-duty military that work during off-duty hours.

Organizational Chart

Chairman/Board of Directors

Executives:

CEO- Commander/CEO
D/CEO- Deputy Commander/Vice CEP
COO- Chief Operating Officer
D/WO- Director-Washington Office

PAC-SVP- Senior VP/Pacific Region
CR-SVP- Senior VP/Central Region
CYR-SVP- Senior VP/Cyber Region
ER-SVP- Senior VP/Eastern Region
WR-SVP- Senior VP/Western Region
SD-SVP- Senior VP/Sales Directorate

Oversight Group:

CG-CMS- Asst. to Commander/Enlisted Matters
IG- Inspector General
GC- General Counsel
AU- Director, Audit

EU-VP- SES/Europe Region
CR-VP- VP/Central Region
ER-VP- VP/Eastern Region
WR-VP- VP/Western Region
SD-VP- VP/Sales Directorate
C/SD-EU- Chief, European Buying Office
VP-SD-A- VP/Store Planning and Analysis

Resources Group:

PL- Director, Corporate Planning
FA- Chief Financial Officer
CS- Chief of Staff/Director Administration
PZ- Director, Procurement Support & Policy
HR- Senior VP Human Resource
IS- Senior VP Management Info Systems
LP- Director, Loss Prevention
PL-C- Chief, Corporate Communications

VP-SD-S- VP/Main Stores/Softlines Division
SD-S- Category Team Managers/Buyers
VP-SD-H- VP/Main Stores/Softlines Division
SD-H- Category Team Managers/Buyers

Operations Group:

LG- Senior VP Logistics
CF- Senior VP Constructions & Facility Support
EU- CDR- Commander AAFES/Europe Region
PAC-CDR- Commander AAFES/Pacific Region

VP-SD-C- VP/Specialty Stores/Consumables
SD-C- Category Team Managers/Buyers

EU-SVP- Senior VP/Europe Region

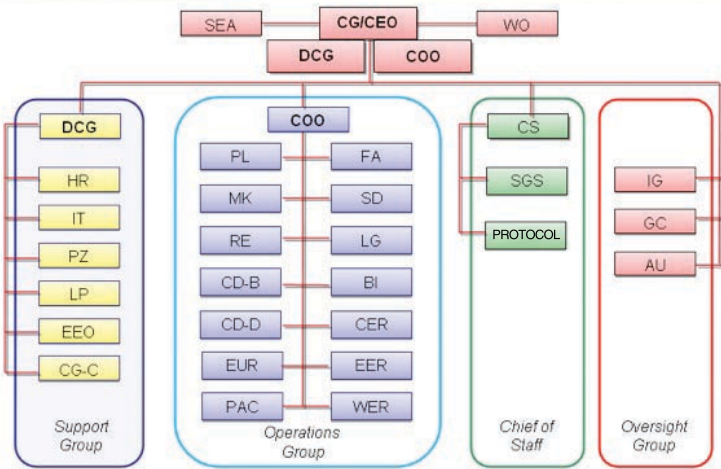
VP-SD-F- VP/Food and Services Division

VP-MK-M- VP/Marketing and Policy

VP-SD-P- VP/Planning and Support

Organizational Chart

AAFES Organizational Chart



Missions

AAFES Mission. “It is the dual enduring mission of AAFES to provide quality merchandise and services to its customers at competitively low prices and to generate earnings which provide a dividend to support morale, welfare and recreation (MWR) programs.”

AAFES Military Mission. Why are we here? We are here to provide military experience, technical expertise and knowledge, helping to ensure compliance with established DoD, federal, military policies, regulations, and instructions. This combination of seasoned military experience, training, and perspective is immeasurably beneficial to AAFES.



History

The Army and Air Force Exchange Service evolved from the War Department order in 1895 directing military post commanders to establish an exchange store wherever practical. This order set the concept and mission of what has evolved as AAFES. Today, AAFES operates over 3,100 retail facilities supporting and serving 12.2 million active duty troops, Reserve and Guard members, their Families and retirees in more than 30 countries and 50 U.S. States.

For more than 114 years, AAFES has provided support to troops serving around the world. In recent years, AAFES has provided support to the military that fought horrific forest fires, to our troops in a peacekeeping mission in Bosnia and Kosovo and to the U.S. and allied troops participating in OPERATIONS Enduring Freedom and Iraqi Freedom. AAFES was in the shadow of the impact site at the Pentagon and at "Ground Zero" in New York City supporting rescue efforts in the wake on 9/11 attacks.



Serving You

AAFES Headquarters “Skyline” Exchange Club offers breakfast and lunch Monday thru Friday. The club provides a variety of activities, including a lounge and general dining for official and non-official functions. The Skyline club is located on the 6th floor of the AAFES HQ building. For more information you can contact the club manager at DSN 967.2686 or Commercial 214.312.2686.

AAFES Fitness Center is located on the main floor of the HQ building and is available for use 24 hours a day seven days a week. Newly refurbished, the fitness center offers individual fitness assessments, personal training, outdoor track, strength training and cardio equipment. The use of the facility is free for all military, civilian associates and family members. For more information please contact the Fitness Center directly at DSN 967.6433 or Commercial 214.312.6433.

AAFES Federal Credit Union. The AAFES FCU is located directly across the street from the HQ AAFES building. They provide convenient savings and checking account services for all AAFES associates. If you require additional information, you can contact them directly at 214.337.0090 or 1.800.452.7333.

AAFES Headquarters Motor Pool has vehicles available for use when conducting official business. For more information or to check out a vehicle please contact Mr. McKnight at ext. 2.2565.

AAFES Headquarters building has onsite dry-cleaning service, mail box, food court and Shoppette for your convenience.

Dry Cleaner Super Center

Monday –Friday.....0700 – 1630
Saturday-Sunday.....Closed

Food Court (Burger King, Taco Bell, Subway, Pizza Hut)

Monday-Friday.....0700 – 1400
Saturday-Sunday.....Closed

Starbucks

Monday-Friday.....0700 - 1500
Saturday-Sunday.....Closed

Mail Center

Drop off to Post Office

Monday-Friday 0500,0900,1445
Saturday-Sunday.....Closed

Shoppette

Monday-Friday.....0700-1800
Saturday-Sunday.....Closed

Exchange Employees' Association

EEA Mission - The objectives of the EEA are to recommend, plan, promote, and conduct recreational and social activities to include programs that promote community relations and programs to enhance the health and well-being of employees in the Dallas/ Ft. Worth area.

EEA Activities - The EEA Board plans, promotes, and conducts recreational and social activities for the AAFES family, both military and civilian including retirees in the Dallas/ Ft. Worth area. We have theme dances, bus trips to the casinos in Oklahoma and Louisiana, camping and fishing trips, and cruises departing out of Galveston, Texas. We offer discount tickets to movie theaters, sporting events, Six Flags over Texas, Fort Worth Zoo, Fiesta Texas, and Scarborough Faire. We also have annual events such as Member Appreciation Night and Drive, an Easter egg hunt for kids, a garage sale and our biggest event, the Holiday Ball. Additionally throughout the year, we have a Flower Program for EEA members and their immediate family members.

EEA Membership - Membership is open to the AAFES family, both military and civilian including retirees in the Dallas / Ft. Worth area. EEA membership is \$26 per year. Dues are prorated for those that have transferred to the area or hired within 6 months of their start date.



Board of Directors Meeting

Quarterly, AAFES military members are tasked to assist with the reception, transportation and billeting of AAFES BOD members. This is our priority at this time. Only mission essential TDYs will be approved during this two to four day period. Leaves must be approved by the Chief of Staff.

Physical Fitness Testing

Army

Army physical fitness testing is conducted twice a year in April and October.

Air Force

Air Force Physical Fitness Assessments will be conducted in accordance with AFI 10-2408.

Army Leave Process

ALL Colonels will to submit DA Form 21, Request an Authorized Leave Form, to the Chief of Staff requesting approval of your leave or passes. Once approved, forward paperwork to MPF for processing.

For Lt Col's and below:

You will submit DA Form 21, Request an Authorized Leave Form, to your immediate supervisor requesting approval of your leave or passes. Once approved, forward paperwork to MPF for processing.

Air Force Leave Web Policy

ALL Colonels will need to submit an email to Chief of Staff requesting approval of your leave and the leave dates. Once your leave is approved and returned to you, forward that email to the MPO (zzHQ CS-MPO, email listing or HQ militaryPersonnel@aafes.com); then process your request through LeaveWeb for validation. Once in the system, when you come to the screen where it asks for your supervisor's email address you can either put your supervisor's information in the block or the information of MSgt Edwards' (edwardsrodn@aafes.com) or TSgt Myles' (mylesang@aafes.com), BUT when the system asks for your supervisor's email address, always use MSgt Edwards' or TSgt Myles' email address in that block so that it will flow to either of them for approval and validation.

For Lt Col's and below:

If your immediate supervisor is an AAFES Civilian or Army Officer, then you will need to submit an email to that individual requesting approval for your leave and the leave dates. Once your leave is approved and returned to you, forward that email to the MPO (MSgt Edwards or TSgt Myles) and then process your request through LeaveWeb for validation. Once in the system, when you come to the screen where it asks for your supervisor's email address, you can either put your supervisor's information in the block or the information of MSgt Edwards' (edwardsrodn@aafes.com) or TSgt Myles' (mylesang@aafes.com), BUT when the system asks for your supervisor's email address, always use MSgt Edwards' or TSgt Myles' email address in that block so that it will flow to either of them for approval and validation.

If your supervisor is Air Force Military, then follow the normal rules for processing your leave through LeaveWeb.

Once in AF Portal, use the dropdown screen and select Sheppard AFB as the base and process the leave as normal either as the member or as the approving official. For those who do not have NIPR access, if you are acting as the approval official, then you will have to copy and paste the tracking number since you will not be able to click on the link to take you to LeaveWeb. If you have any questions accessing the system or any problems once inside, please contact MPO at 214.312.6627.

First Friday

Who: All military – mandatory formation
What: Ultimate Frisbee, or other physical activity
When: First Friday of every month – 0700-0830
Where: South Lawn, or location as announced
Excused absences: Leave, TDY, CoS approved
Uniform: Official PT Uniform Only

Notes:

Individuals on profile must report in PT uniform. Physical activity should be adjusted based on limitations of profile, MPO will take attendance; all unexcused absences will be reported to Chief of Staff.

Air Force Promotions Testing

Promotions testing are administered by proctor at the NAS JRB in Ft Worth TX.

Testing Location
1651 Lyons Dr,
Bldg 1662
NAS Joint Reserve Base

Support Military Installations

Fort Hood is the primary support post for Army personnel and Sheppard AFB is the primary support base for Air Force personnel.

Naval Air Station Joint Reserve Base Ft. Worth

NAS JRB Located approximately 40 miles west of HQ AAFES Dallas, the NAS JRB is the closest military installation. NAS JRB has an AAFES Main Exchange, Commissary and ID Card facilities.

Main Exchange Complex located on NAS JRB Ft Worth (formally Carswell AFB) in Ft Worth. The Exchange Complex houses a snack bar, beauty shop, laundry-dry cleaning, alterations, optical shop, barbershop, and flower shop. Hours of operation Mon-Sat 0900 – 1900 and Sun 1000 - 1800

Navy Lodge Ft. Worth located on NAS JRB Ft Worth (formally Carswell AFB) in Ft Worth. The Exchange Complex houses a snack bar, beauty shop, laundry-dry cleaning, alterations, optical shop, barbershop, and flower shop. Hours of operation Mon-Sat 0900 – 1900 and Sun 1000 - 1800

Navy Lodge Ft. Worth located at 3350 Meandering Ft. Worth, TX 76127-1171 1.817.569.1700, Fax 817.569.1730. To make a reservation for all Navy Lodges except Fallon, Guantanamo Bay, Sasebo, or Yokosuka, contact the Central Reservation Center by telephone, Online, or by directly calling the Lodge of your choice. Note that reservations cannot be made, changed or canceled via the Internet less than 2 days prior to your arrival date. If your travel plans require this please call our toll free number 1.800.NAVY.INN (1.800.628.9466) and one of our agents will assist you. You may also call the Lodge directly.

Clothing Sales NAS JRB is located at 1275 Davison Drive, Ft Worth, TX 76127. Hours of operation Mon – Sat 0900 – 1700 and Sun 1000 -1600 for more information please contact clothing Sales at 1.817.738 .6171.

Carswell Delivery Program for added convenience items can be shipped from NAS JRB Main Exchange and Clothing Sales to the HQ Shoppette for local purchase saving you time and money.

Commissary is located on NAS JRB Ft Worth across from the Main Exchange Complex. Open seven days a week 0900 – 1900.

DEERS & ID Cards Locations

Garland

901 South Glenbrook Drive, Garland, TX. 75040

972.494.7224

Hours of Operation: Tues – Fri 0700 – 1600 Appointment Only

NAS JRB Fort Worth

1711 Doolittle Ave (Building 1304) Fort Worth, TX 76127

817.782.5244

Hours of Operation: Mon – Sat 0730 – 1600

CAC appointment Online Sign up

Website <https://es.cac.navy.mil>

Select FT Worth Pass and ID and make appointment

Grand Prairie

599 Camden Drive, Grand Prairie, TX 75051

972.343.4399

Hours of Operation: Please Call

Dallas

3130 Redbird Lane, Dallas, TX 75237

214.337.1622 ext 41

Hours of Operation: Mon – Fri 0800 -1700 Appointment Only

Medical Care

General - Active Duty. Medical care is readily available from a number of sources in the Dallas / Ft. Worth area. Those personnel who qualify for TRICARE Prime Remote normally select a civilian care provider to handle their medical care. Those personnel who don't qualify for Prime Remote by virtue of where they live can obtain medical care from NAS JRB in Ft. Worth. You'll receive more information on the TRICARE program during your in processing.

Dependent Medical Care - TRICARE. TRICARE is a comprehensive health benefits program that supplements the care available in military treatment facilities to dependents of uniformed service members. TRICARE Prime members receive certain preferential services and conceive care on a space available basis. Further information is available by calling TRICARE directly at 1-800-406-2832 or by accessing their web site at www.tricare.osd.mil.

Dental Care. United Concordia Companies, Inc has been selected by the Department of Defense to administer the new TRICARE Active Duty Dental Program (ADDP). This program replaces the current process by which active duty service members (ADSMs) receive private sector dental care from civilian dental practices.

As and ADSM in a remote service area, it is important to note the following changes to the way you will access dental care under the ADDP:

You must obtain an Appointment Control Number from United Concordia before scheduling or receiving private secure dental care.

You must utilize a United Concordia network dentist for services to be covered by ADDP.

For more information on ADDP, visit the ADDP website at www.addp-ucci.com or call 1866-984-ADDP (1.800.984.2337).

For those who fall under the old Dental Plan, the BDC at NAS is in Bldg 1740, 1711 Doolittle Ave. Phone DSN 734-5718 or Commercial 817-782-5718. Hours of operation are 0745-1630 Monday through Friday. The TRICARE Family Member Dental Plan is a comprehensive dental plan available to family members of active duty members. For further information, visit TFMDP online at www.unitedconcordia.com or call customer service at 1-800-866-8499 from 0800-2000 Monday through Friday.

Dallas Vehicle Processing Center

Privately Owned Vehicles being shipped from overseas can be reclaimed at the Dallas Vehicle Processing Center (VPC). The VPC is located on 500 North Stemmons Freeway, Lake Dallas, Texas 75065. Phone numbers are 940-497-1036 and 1866-438-2046.

Vehicle Registration. If you are or choose to become a Texas resident, you will have 30 days after you arrive in Texas to obtain a valid vehicle registration card and license plates. Active duty military, who choose not to become a Texas resident, are not required to obtain Texas license plates; however, vehicle registrations, driver's license and insurance must be valid.

Dallas Vehicle Registration
500 Elm Street, Records Bldg
TX 75006-3703
214-653-7621

Tarrant Vehicle Registration
10 North Watson Rd Dallas,
Arlington, TX 76011-5260
817-649-5938

Household Goods

Personal Property. Upon your arrival in the DFW area, you will need to contact the Joint Personal Property Shipping Office (JPPSO) to schedule your household goods delivery. The JPPSO office is located at Naval Air Station Joint Reserve Base (Formerly Carswell AFB) in Ft. Worth. You can call them directly at DSN 739-7304, extension 12 or 13 or Commercial (817) 782-7304, extension 12 or 13.

Army Consolidated Claims Office. Claims for missing or damaged personal property are processed at Ft. Hood, Texas for all Army personnel. If you require more information or ever need assistance on filing a claim, you can contact them directly at DSN 737-7722 or Commercial (254) 287-7722.

Air Force Claims Office. Claims for missing or damaged personal property are processed at Sheppard AFB, Texas for all Air Force personnel. If you require more information or ever need assistance on filing a claim, you can contact them directly at DSN 736-7200 or Commercial (940) 676-7200.

Housing

Permanent Housing. Dallas is surrounded by numerous smaller communities/cities. Making a decision on where you want to live can be difficult. Fortunately, the Internet provides many sites that may make this easier for you. Many of the cities have Home Pages established that include specifics on schools, community activities, etc. In addition, we have some websites that previous transferring associates found useful in making their decisions. The addresses listed below should give you a good starting point.

Addison: www.addisontexas.net
Allen: www.ci.allen.tx.us
Arlington: www.ci.arlington.tx.us
Carrollton: www.ci.carrollton.tx.us
Cedar Hill: www.cedarhill.org
Coppell: www.ci.coppell.tx.us
Dallas: www.dallascityhall.com
Denton: www.ci.denton.tx.us/index.asp
Duncanville: www.ci.duncanville.tx.us
DeSoto: www.ci.desoto.tx.us
Euless: www.euless.org
Farmers Branch: www.ci.farmers-branch.tx.us
Frisco: www.ci.frisco.tx.us
Flower Mound: www.flower-mound.com
Fort Worth: www.ci.fort-worth.tx.us
Garland: www.ci.garland.tx.us
Grand Prairie: www.ci.grand-prairie.tx.us
Glen Heights: www.glennheights.com
Highland Village: www.highlandvillage.org
Irving: www.ci.irving.tx.us
Kennedale: www.kennedale.com
Lake Dallas: www.lakedallas.com
Lancaster: www.ci.lancaster.tx.us
Lewisville: www.cityoflewisville.com
Mansfield: mansfield-texas.com
McKinney: www.mckinneytexas.org
Mesquite: www.cityofmesquite.com
Midlothian: www.midlothian.tx.us
North Richland Hills: www.ci.north-richland-hills.tx.us
Pilot Point: www.pilotpointonline.com
Plano: www.welcometoplano.com
Red Oak: www.redoaktx.org
Rockwall: www.rockwall.com
Seagoville: www.cityofseagoville.org
Waxahachie: www.waxahachie.com

Housing

Apartment Options:

Listed below is just a sampling of choices. In addition, we found a great website that allows you to search various areas for just the right location and price: www.apartments.com. The website www.homeadvisor.com also has valuable information

Dallas Apartment Locators 214.312.7368

Quality Apartment Locators 214.349.4923

Access Apartment Locators (Irving) 972.790.3083

AOK Apartment Locators 214.826.8114

Texas Apartment Locators (Arlington) 972.459.7470

Home Team Apartment Locators (Lewisville) 972.459.7470

AZ Apartment Locators (Carrollton) 972.401.9696

Metro Apartment Locators

(Richardson) 972.671.5665

(DeSoto) 972.228.8833

Hotels:

Hilton Garden Inn 800 N Main Street, Duncanville, TX 75237
1.972.283.9777

Hampton Inn 4152 Independence Drive, Dallas, TX 75237.
1.800.HAMPTON.

Holiday Inn 711 E. Camp Wisdom Road, Dallas, TX 75237.
1.800.HOLIDAY.

Lexington Hotel Suites 4150 Independence Drive, Dallas, TX 75237.
1.800.537.8483 or 214.298.7014.

Directions: All four are five minutes South of AAFES HQ off Cockrell Hill Road immediately North of Interstate 20. Take Cockrell Hill South from HQ toward Interstate 20, turn East (right) onto Camp Wisdom, go one block from the light (50 yards), then turn South (right) onto Independence Road for Hampton Inn or Lexington Suites. The Holiday Inn is West on Camp Wisdom Road from Cockrell Hill.

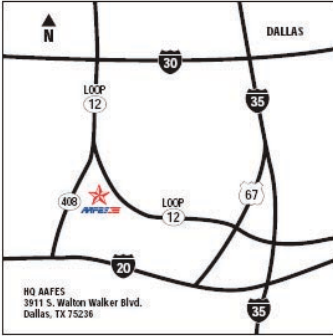
Efficiencies:

Homestead Village 1980 W. Pleasant Ridge, Arlington, TX 76015.
817.465.8500.

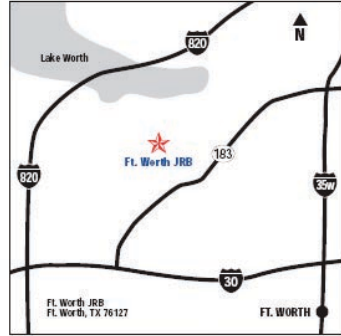
Fully equipped kitchens, all utilities, dishes, free local phone, voice mail, weekly housekeeping, laundry and satellite TV.

Directions: Twenty minutes West on I-20 at Cooper Street in Arlington. Take the Cooper Street exit to the North, cross over to the North side access road and go one block.

Maps



AAFES HQ



Ft. Worth JRB

City	Distance from HQ	City	Distance from HQ
Addison	22.9	Kennedale	22.8
Allen	37.6	Lake Dallas	33.3
Arlington	18.5	Lancaster	14.1
Carrollton	19.7	Lewisville	27.2
Cedar Hill	10.7	Mansfield	23.1
Coppell	21.5	McKinney	45.6
Dallas	11.5	Mesquite	25.1
Denton	42.1	Midlothian	18.7
Duncanville	4.5	N. Richland Hills	28.0
DeSoto	9.3	Ovilla	19.3
Euless	19.9	Plano	31.6
Farmers Branch	17.3	Red Oak	15.8
Frisco	36.0	Richardson	26.2
Flower Mound	29.9	Rockwall	34.7
Fort Worth	31.2	Seagoville	26.0
Garland	31.5	Waxahachie	26.4
Grand Prairie	8.7		
Glen Heights	15.2		
Highland Village	32.1		
Irving	9.9		

Education

Public Schools in the Dallas Area. There are many Independent School Districts in close proximity to HQ AAFES. Most schools require proof of residency within the school district before you can register your child. Because of this and the diversity of the school system, it is important you decide what area you want to live in before attempting to register for school. According to Texas State Law, “a Texas public school student shall not be given credit for a class if he/she has been in attendance for less than 80 days in a semester. School semesters average 86 days.” Exceptions due to extenuating STET circumstances may be brought before an attendance committee appointed by the local school district. Therefore, it’s important you consider the law when planning leave or other delays en route on PCS during the school year.

Private Schools in the Dallas Area. There are many private schools in the Metroplex. You can find a current listing using the Yellow Pages or the internet.

Colleges & Universities. The Dallas / Ft. Worth Metroplex has a wide-range of institutions of higher education offering a range of degree and certificate programs. To find additional information about the various schools, you should consult the Yellow Pages or the internet.



Local Attractions and Entertainment

Dallas Arboretum & Botanical Garden 8617 Garland Road at Whittier.
Phone: 214.327.8263.

Dallas Aquarium Fair Park, 1st St. and MLK Jr.
Phone: 214.670.8443.

Dallas Museum of Art Gallery Buffet and Museum.1717 N. Harwood.
Phone: 214.922.1200.

Dallas Zoo 621 E. Clarendon.
Phone: 214.670.5656.
(Has 25 acre Wilds of Africa exhibit.)

Fair Park Music Hall 909 1st Avenue at Parry, Dallas.
Phone: 214.565.1116.

Farmers' Market 1010 S Pearl Expwy.
Phone: 214.939.2808.
(Farmers sell produce directly to customers.)

Ice Skating Rink at the Galleria 13350 Dallas Parkway.
Phone: 214.392.3363.

Los Colinas Water Taxis 202 Mandaley Canal, O'Connor & Hwy 114, Irving.
Phone: 972.869.4321.

Medieval Times Dinner & Tournament 1812 Market Center Blvd, Dallas.
Phone: 214.761.1800.

Myerson Symphony Center 2301 Flora, Dallas.
Phone: 214.670.3600.

Ranger Baseball Games 1000 Ballpark Way, Arlington.
Phone: 817.273.5222.

Southfork Ranch Home of "Dallas" TV series.
Phone: 800.527.1624.

Six Flags Over Texas I-30 at Hwy 360, Arlington.
Phone: 817.640.8900.

The Science Place at Fair Park 1318 2nd Ave.
Phone: 214.428.5555.