

# Upper White River Basin Ozark Water Watch Partnership

**Susan Higgins**

Volunteer Water Quality Monitoring Coordinator  
Missouri Department of Natural Resources



**MISSOURI  
DEPARTMENT OF  
NATURAL RESOURCES**



Watershed  
Coalition



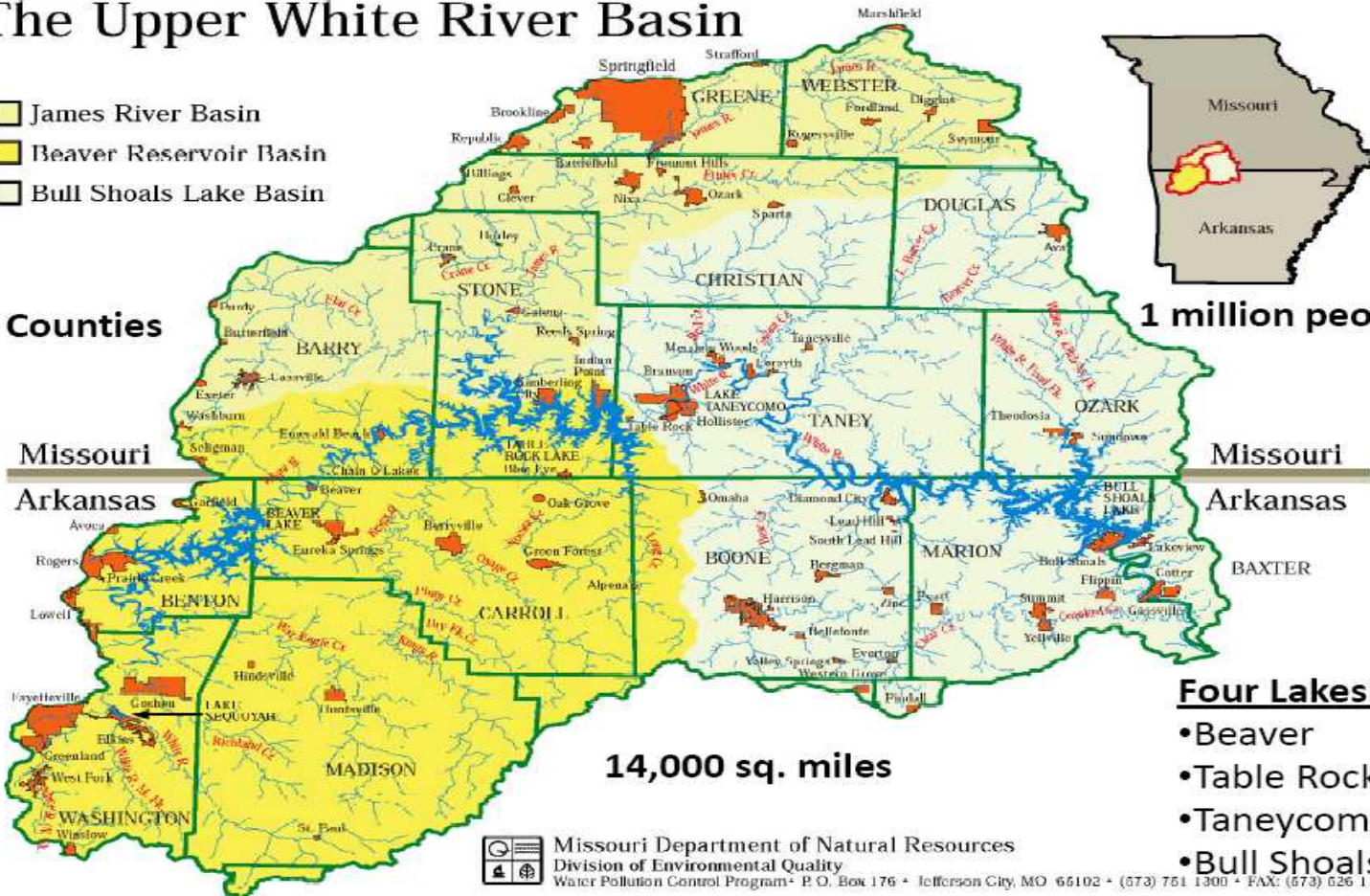
# Upper White River Basin

## The Upper White River Basin

- James River Basin
- Beaver Reservoir Basin
- Bull Shoals Lake Basin

19 Counties

1 million people



Missouri

Missouri

Arkansas

Arkansas

### Four Lakes:

- Beaver
- Table Rock
- Taneycomo
- Bull Shoals

14,000 sq. miles

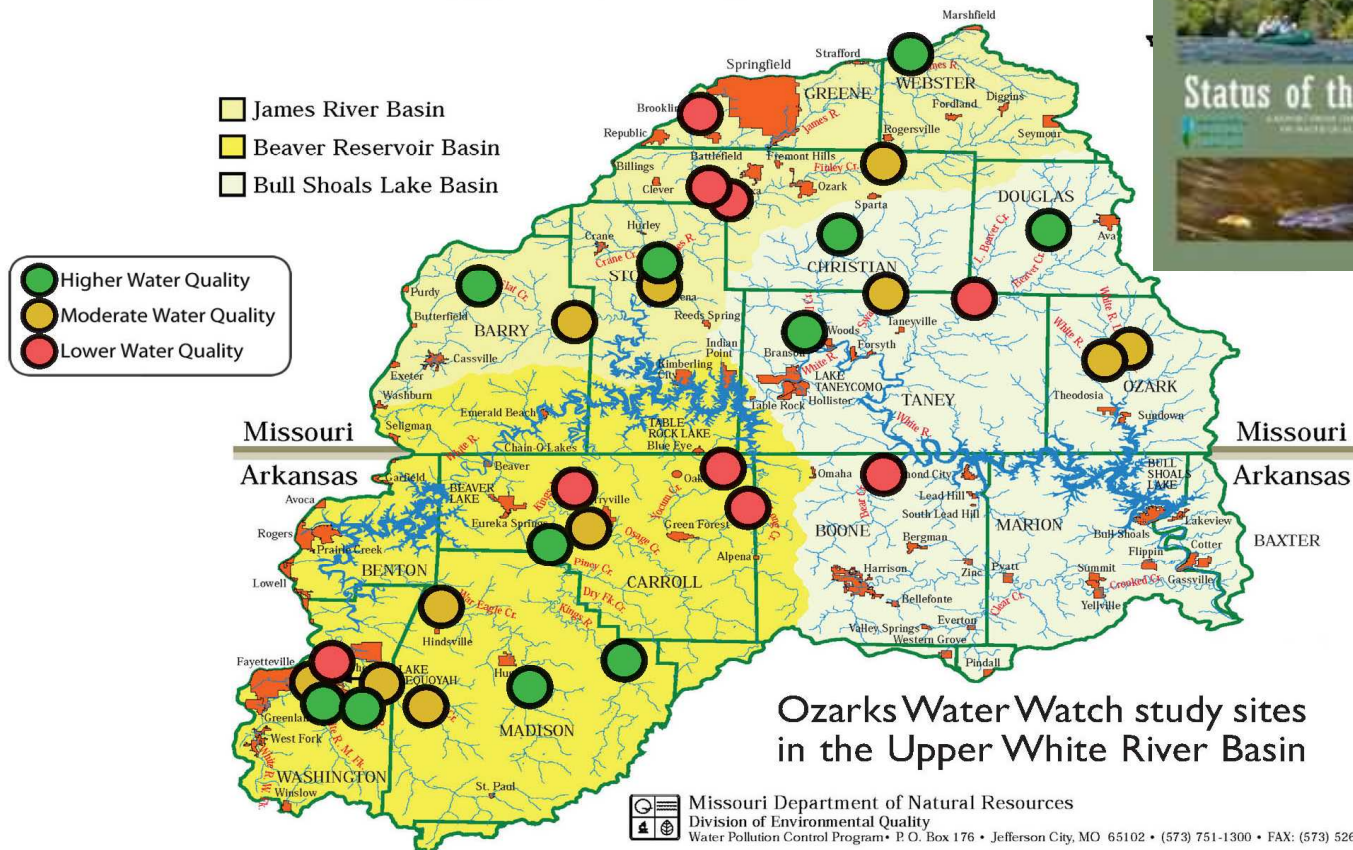
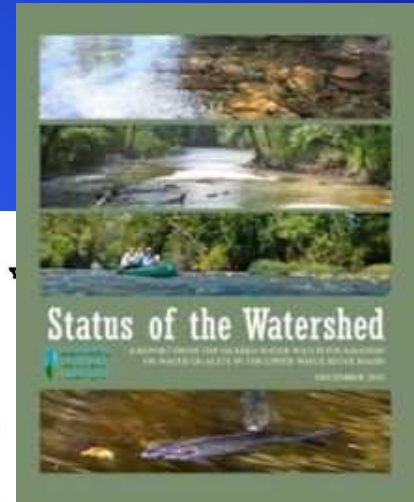


Missouri Department of Natural Resources  
Division of Environmental Quality

Water Pollution Control Program • P. O. Box 176 • Jefferson City, MO 65102 • (573) 761 1300 • FAX: (573) 526 1146

# Previous Data Collection

- United States Geological Survey
- University of Arkansas
- Missouri State University



# Missouri Stream Team Watershed Coalition



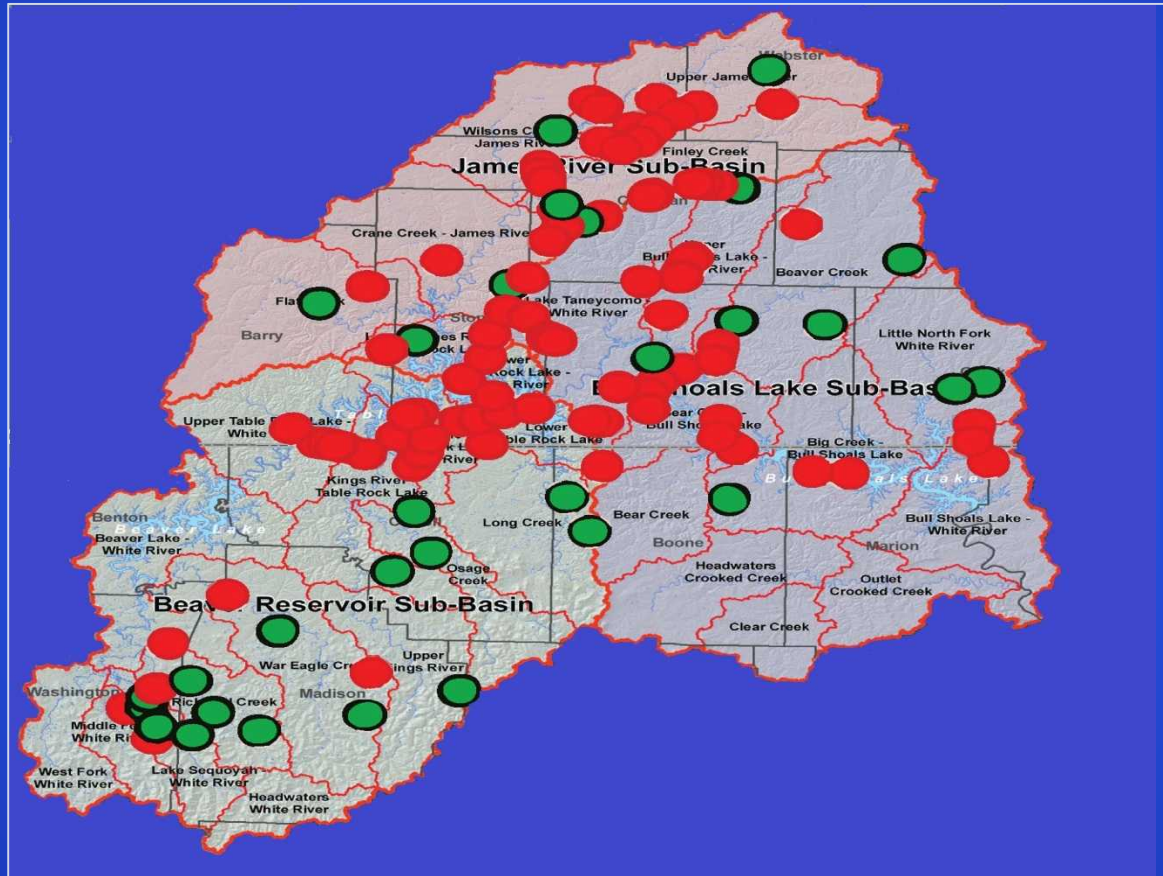
## The State of Missouri's Streams Summary of Invertebrate Data 1993-2010



The State of Missouri's Streams Report summarizes water quality in Missouri's streams and rivers using biological data collected by trained citizen volunteers through the Missouri Stream Team Program. This report was assembled by the Missouri Stream Team Watershed Coalition with the goal of describing water quality across Missouri, providing feedback to volunteers and educating citizens.



# Volunteer Monitoring Sites



Ozark Water Watch  
Study Sites



Volunteer  
Monitoring Sites

# Planning the Partnership



# Sampling Protocols

- **Volunteers to collect samples**
  - 2 Macroinvertebrate (Stream Team VWQM)
  - 4 Water Chemistry (Stream Team VWQM)
  - 4 Nutrient Grab Samples (University of Missouri)
  - 2 High Flow Grab Samples (University of Missouri)

	April	May	June	July	Aug	Sept	Oct
Low Flow 60mL	Collect 1		Collect 1		Collect 1		Collect 1
High Flow 60mL	Collect 1					Collect 1	
Strm Team Wtr Chem	Measure		Measure		Measure		Measure
Strm Team Invert	Collect						Collect

# High Flow Sampling

## Two High Flow Samples to help quantify Non-Point Source Pollution

- 60 ml bottle
- Collected by bucket from bridge
- Watch hydrograph during rain storm





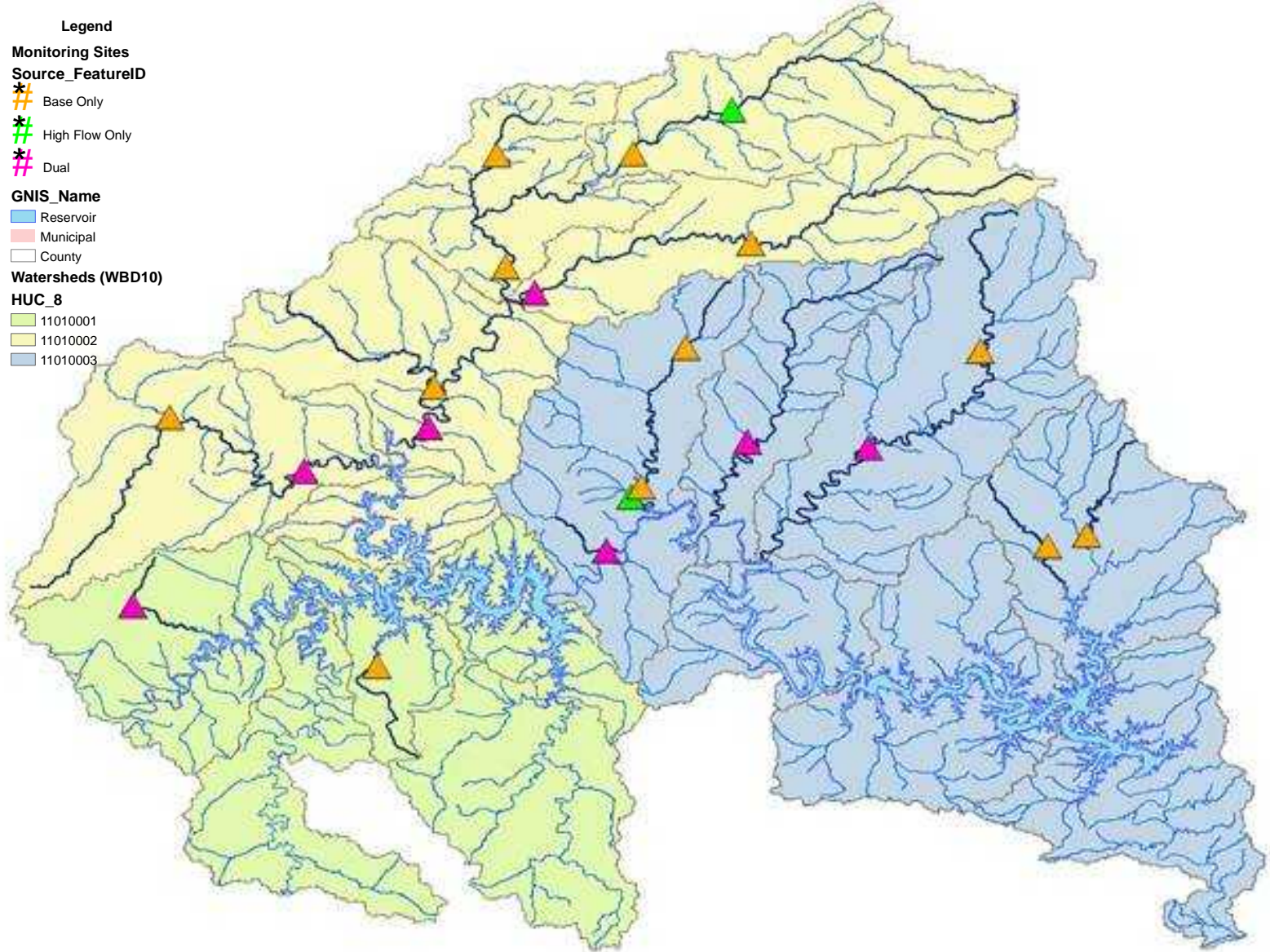
# Attention to Details

- Volunteers trained on sample collection
- Safety briefing



- Matching Volunteers with sites

# 2012 Monitoring Sites



# Partners



Watershed Coalition



# Questions?

