

# Achieving Outstanding Alabama Water Designation for the Magnolia River through Citizen Action

Dr. Bill Deutsch  
Alabama Water Watch  
Auburn University

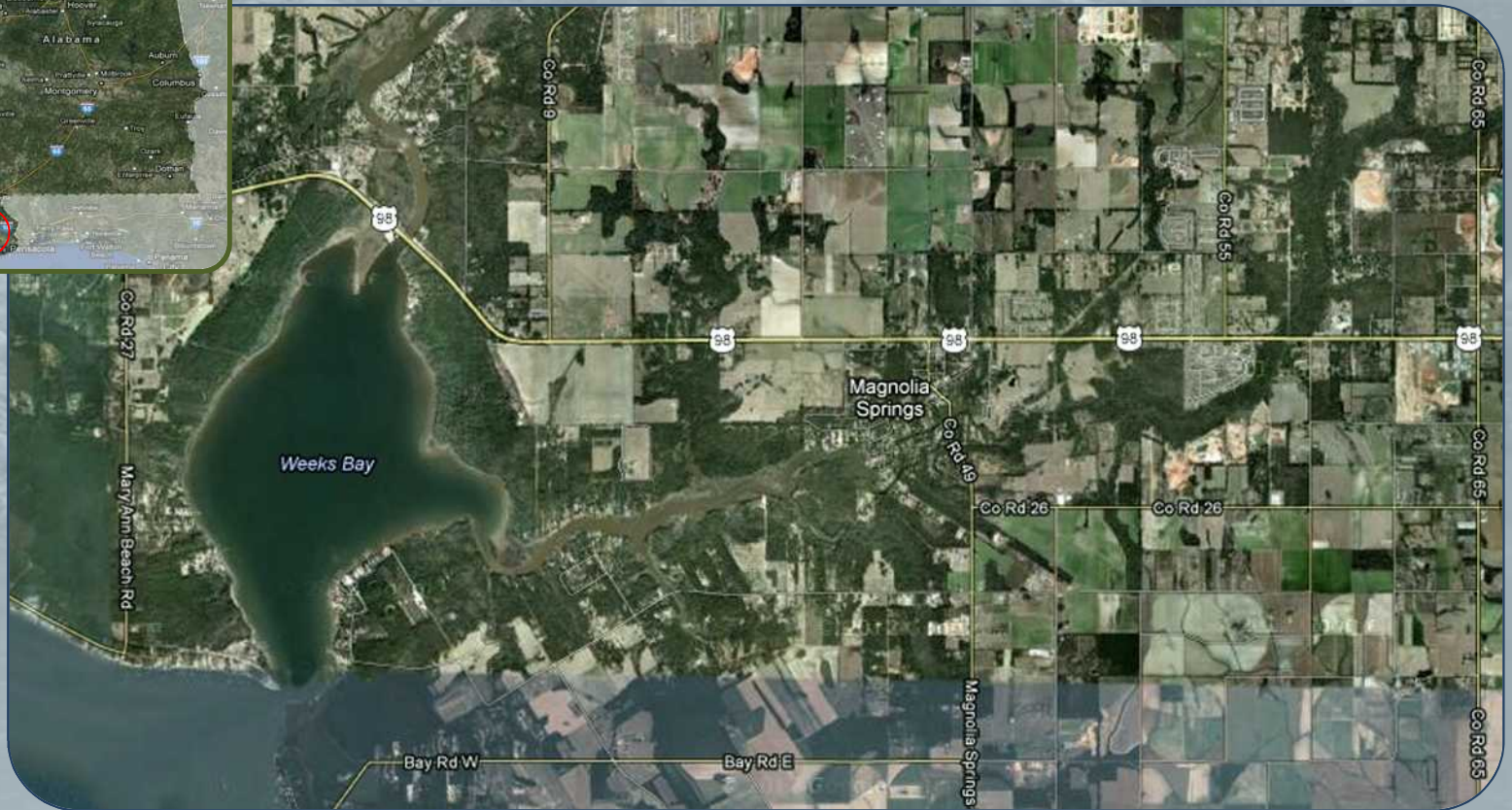
National Water Quality Monitoring Conference and River Rally Bridge Day

May 4, 2012

Portland, Oregon

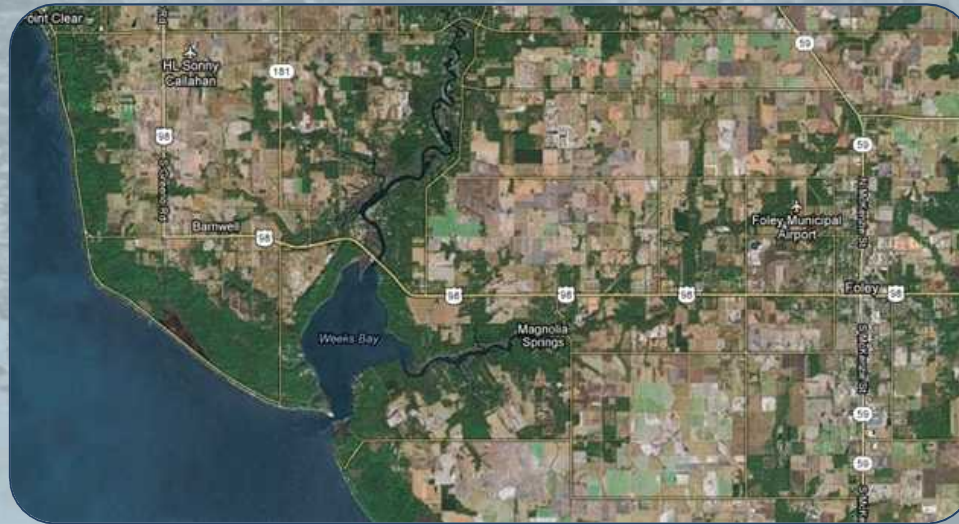


# Magnolia River Watershed Baldwin County, Alabama





# Magnolia River Watershed



- The Magnolia River Watershed is 41 sq. miles...about 4 miles of navigable stream
- The river flows to Weeks Bay, an Outstanding National Resource Water
- The river is primarily freshwater, but is tidally influenced in its lower reaches

# Original Situation



- Low population
- U.S. Mail delivery by boat
- Quiet, scenic, historic
- Primarily forested and agriculture
- Development impacts increasing

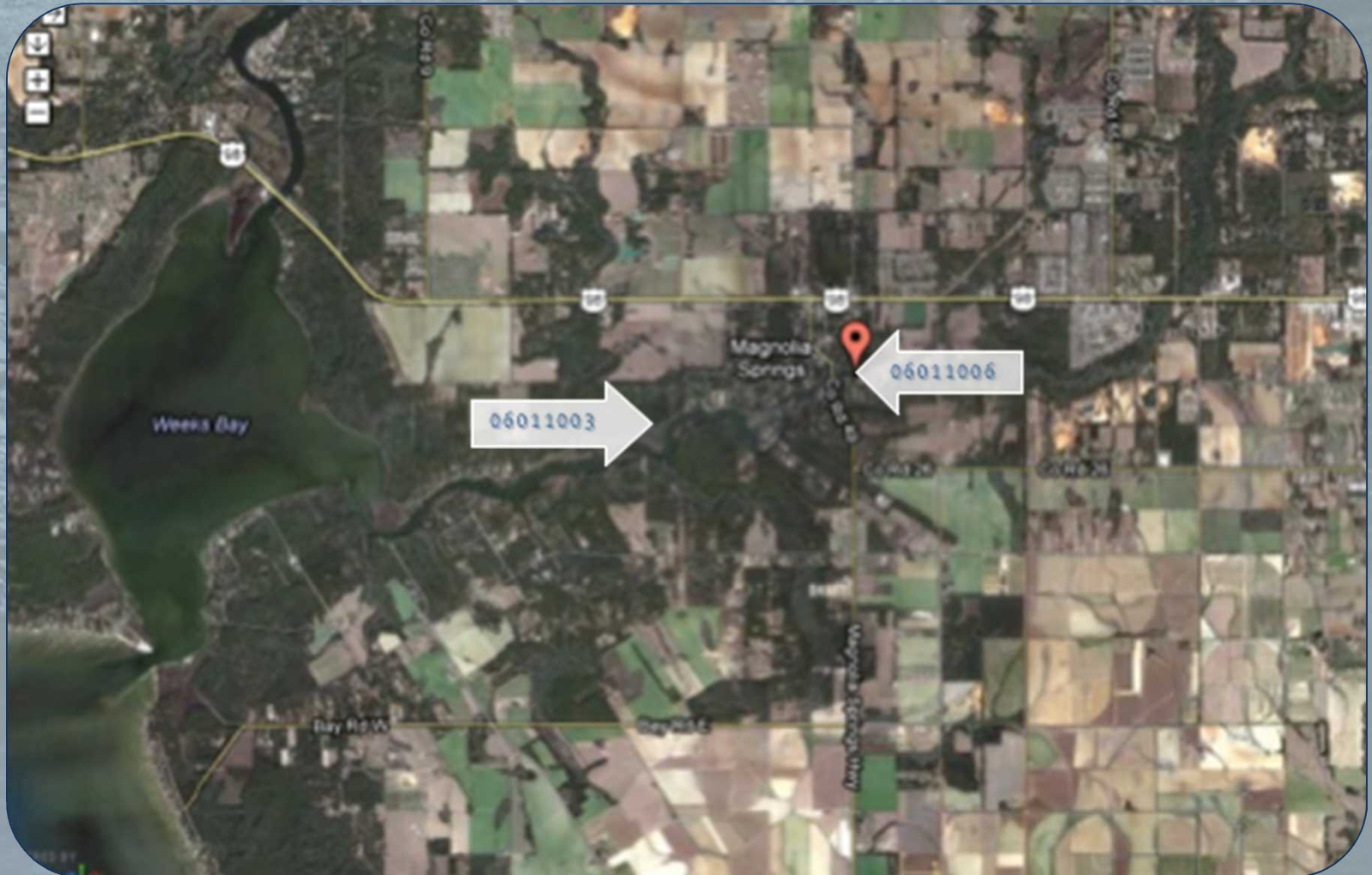
# Drivers for Collaboration and Change



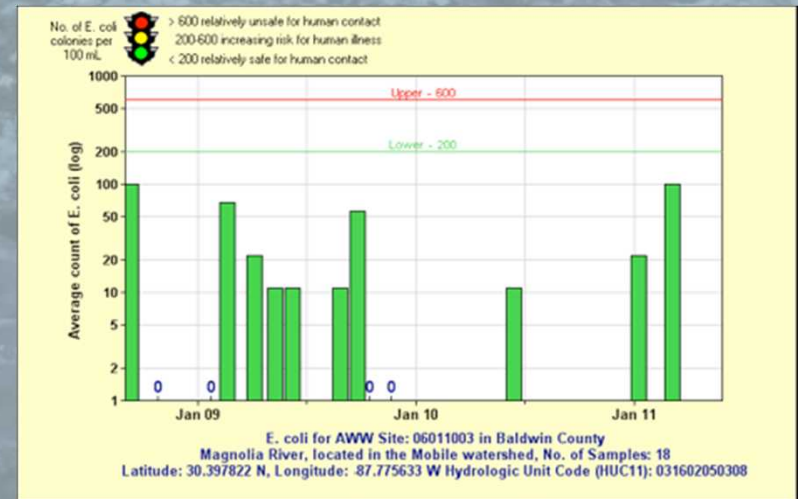
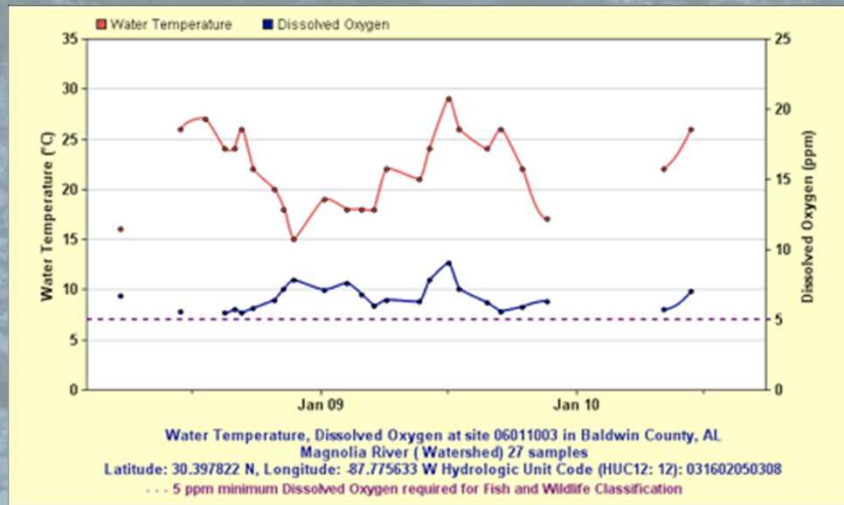
- Consultant Group Study
- OAW recommendations to Town Council
- Contact with AWW
- Monitoring Plan established
- Network of technical and political support
- Public Hearing at ADEM



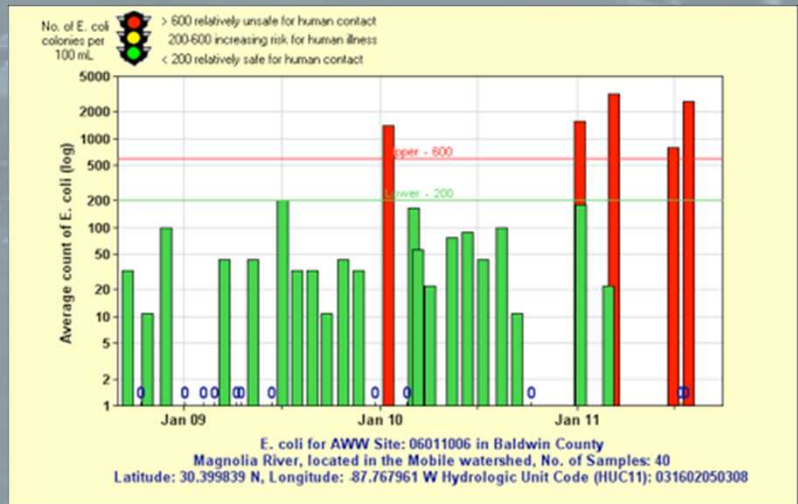
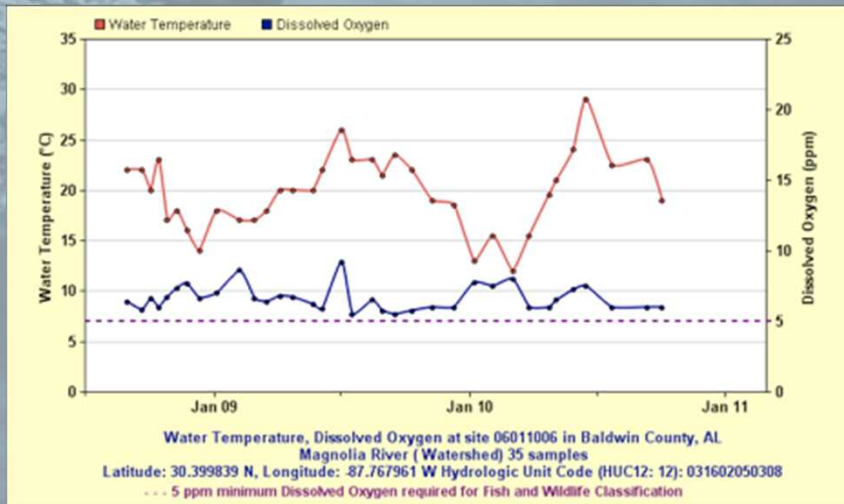
# Two Sample Site Locations



## Sample Site 06011003



## Sample Site 06011006





# Involvement



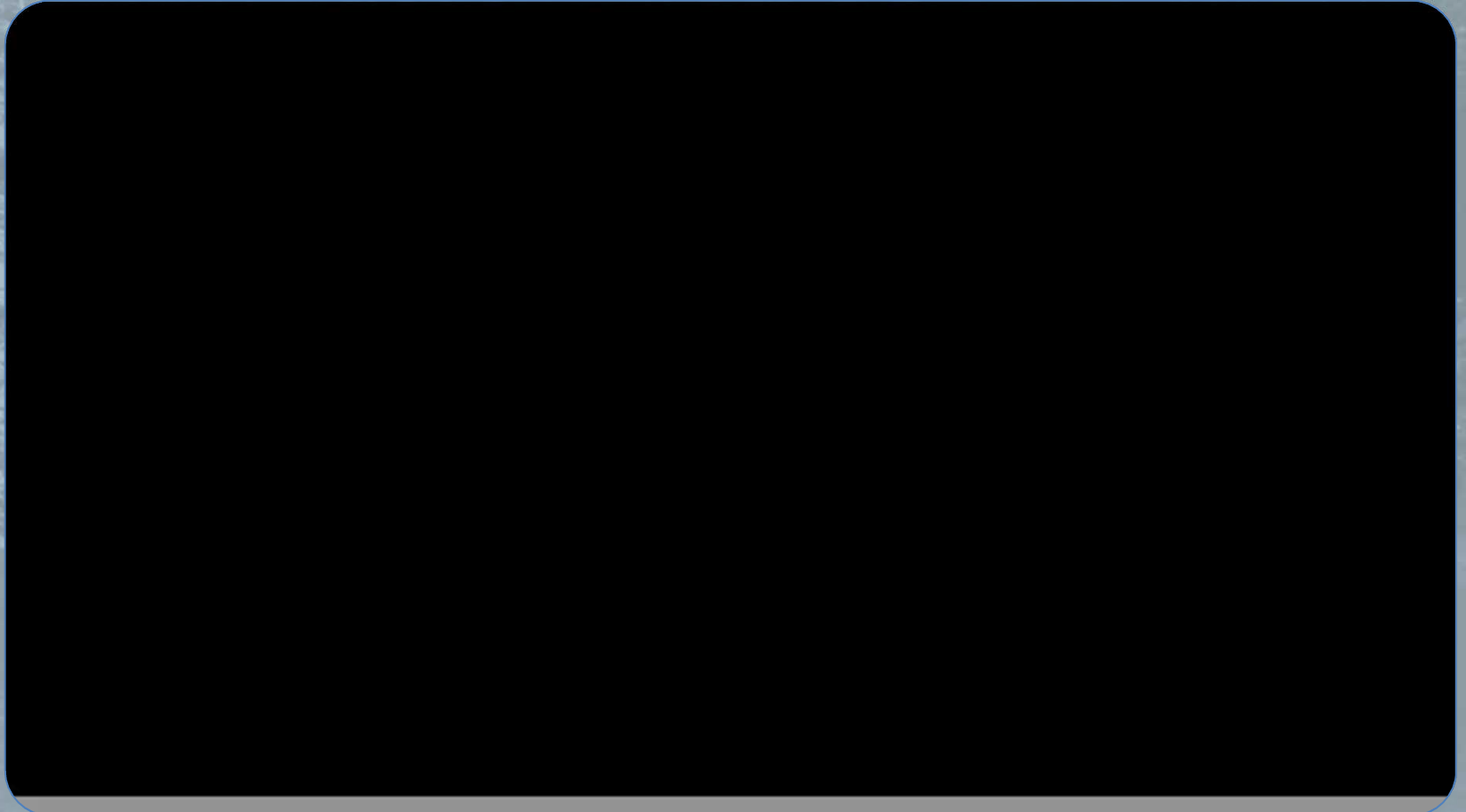


# Involvement

- Town Council
- Watershed Residents
- AWW program and partner groups
- Other environmental organizations
- County Government
- Alabama Department of Environmental Management
- Environmental Management Commission



Excerpt from the AWW  
*Living Downstream* Video







# Lessons Learned



- Progressive Local Governments see Rivers as Amenities
- River Protection can Start with a Plan that includes Volunteer Monitoring
- River Conditions and Trends can be Determined by Citizen Volunteers
- Good Water Data combined with Good Political Networking is Powerful
- Success Breeds Success (e.g. Wolf Bay Watershed Watch OAW)
- OAW is a source of Community Pride and Inspiration for other Groups



**LOVE THY**  
**DOWNSTREAM**  
**NEIGHBOR**  
[alabamawaterwatch.org](http://alabamawaterwatch.org)