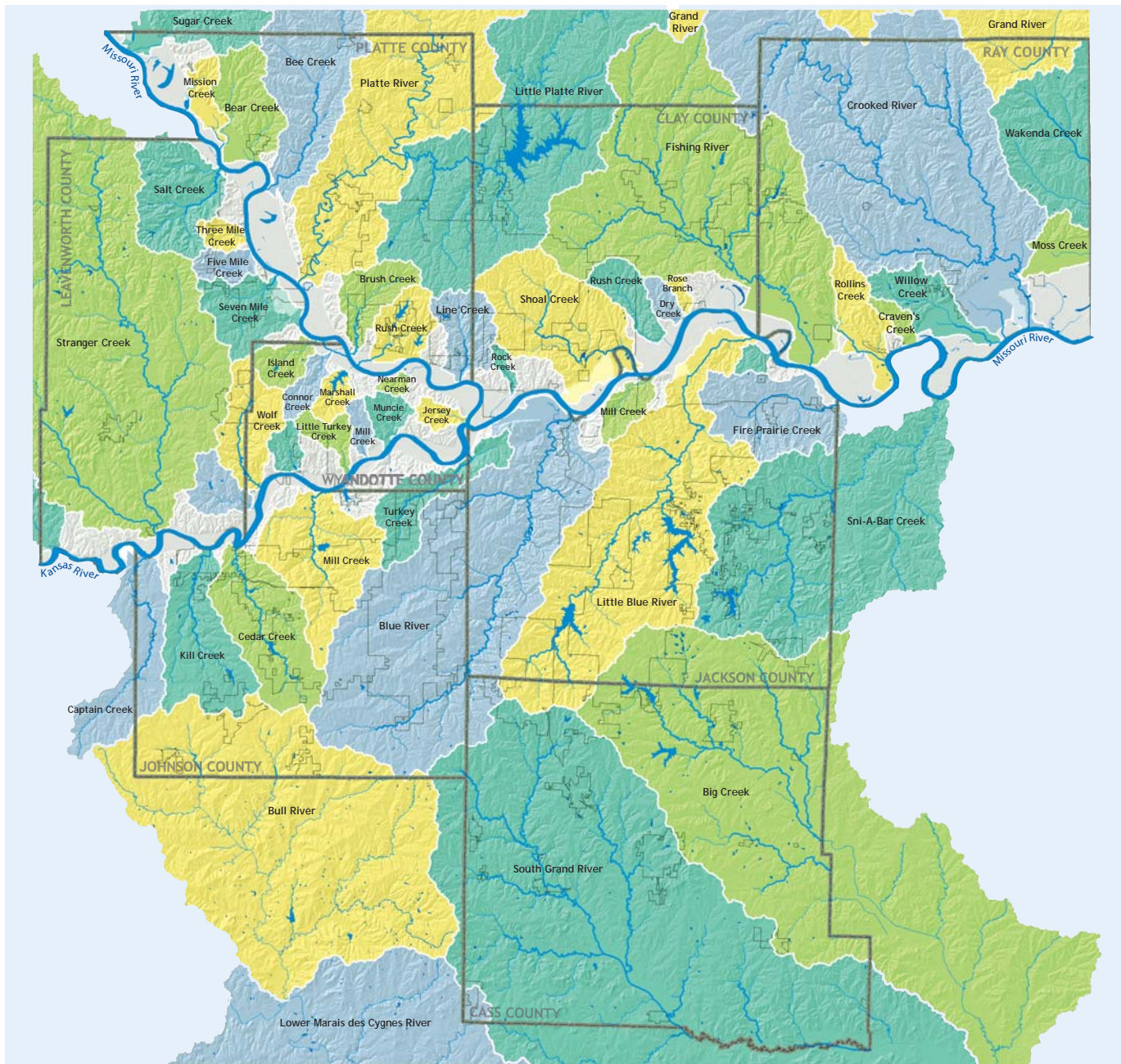


Do you know which watershed you live in?

A map of watersheds in the Kansas City region



Our local watersheds

The Kansas City regional watershed map (above) shows the importance of the Missouri and Kansas rivers in our region. In the Kansas City region, all runoff eventually drains into the Missouri River, the world's 15th longest river. The Missouri River watershed drains one-sixth of the water in the United States, from the mountains of western Montana to its confluence with the Mississippi River in St. Louis, Mo. In downtown Kansas City, Kan., the Kansas River flows into the Missouri River at Kaw Point. The Kansas River watershed is nested within that of the larger Missouri River, and drains about one-third of the state of Kansas.

This map illustrates the region's important watersheds. Captain Creek, Kill Creek, Stranger Creek and Cedar Creek are some of the larger streams emptying into the Kansas River. Others, like the Platte River, Fishing Creek and Crooked River flow directly into the Missouri River.

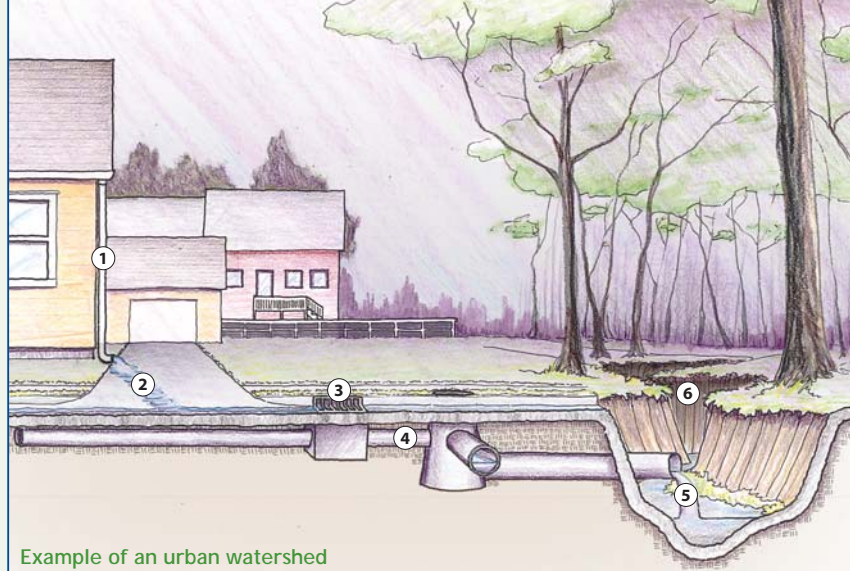
Thinking about watersheds helps remind us that our actions can impact — for better or for worse — all of the streams and rivers in our region.

For more information please visit www.marc.org/Environment/Water or call 816/474-4240.



Help protect our watersheds

1. Landscape with native plants to increase water infiltration and decrease lawn maintenance.
2. Never discard trash or yard waste down storm drains or in the street.
3. Dispose of pet waste properly.
4. Use lawn chemicals safely. Always follow label instructions and never apply before rain or watering the lawn, unless directed.
5. Redirect downspouts to drain rain water onto lawns and gardens.
6. Wash your car at a professional car wash that filters the wastewater or wash your car in a grassy area. Do not wash cars on driveways or in the street.
7. Use rain barrels or rain gardens to conserve rain water on your property.



Example of an urban watershed

- | | | |
|---------------------|-----------------|-----------------------------------|
| 1. Downspout | 3. Storm drain | 5. Untreated stormwater discharge |
| 2. Untreated runoff | 4. Sewer system | 6. Urban stream |



On the cover: A view of downtown Kansas City, Mo., from Kaw Point — the confluence of the Kansas and Missouri rivers — in Kansas City, Kan.

www.marc.org/Environment/Water



What is a watershed?

A watershed is an area of land that drains to a common body of water, such as a nearby creek, stream, river or lake. Watersheds vary considerably in size. For example, when it rains, all the water from a small watershed may travel to a local creek. That creek will flow into a larger stream, like Brush Creek, which in turn collects water from an even larger watershed. Brush Creek flows into the Blue River, which then deposits water into the Missouri River. **We all live in a watershed.**

We all live downstream

Watersheds cross city, county and state lines. When different communities share a watershed, the residents of all the cities and counties in the watershed need to address issues like flooding and water quality together. Local watershed decisions impact our upstream and downstream neighbors.

What's the problem?

During the construction of homes, roads and office buildings, vegetation is often removed and replaced by large paved areas. These **impervious surfaces** keep rain from seeping into the soil and recharging groundwater supplies. Paved surfaces also increase the speed and amount of water that rushes down gutters and into storm drains during a rain storm. This "**stormwater runoff**" picks up pollutants from motor oil, lawn chemicals, pet waste, salt, litter and soil along the way, before flowing to rivers, lakes and streams — **untreated**.

The large amount of untreated water entering the storm sewer system — and eventually our streams and lakes — has lasting health, safety, environmental and economic impacts on our watersheds and communities.

Watersheds support a wide variety of plants and wildlife and provide outdoor recreation opportunities for residents. Protecting the health of our watersheds preserves and enhances the quality of life for Kansas City residents and those living downstream.

Know Your Watershed



Clean Water. Healthy Life.

For more information, visit www.marc.org/Environment/Water