



# Telemedicine & eHealth

California Area Indian Health Service

Steven Viramontes, PHN



## INDIAN HEALTH SERVICE CALIFORNIA AREA TELE-MEDICINE AND eHEALTH SITES





# Telemedicine Services

- 19 retinal screening cameras in the California area. 10 more cameras will be added in 2010
- 30 video-conferencing units are installed at 20 clinics
- 8 sites are receiving specialty care telemedicine services in the areas of: Endocrinology, Nutrition, Psychiatry, Pain & Addiction management, Dermatology and Genetic Counseling
- 3 telemedicine providers being utilized at this time: UC Davis Medical Center, New Leaf Treatment Center (Dr. Alex Stalcup), Dr. David Sprenger (child psychiatry) and City of Hope
- Sonoma County Indian Health has provided a training site for multi-site video conference training

# How Can Video Conferencing Services Impact Care?

## Health Promotion & Disease Prevention

Clinics can partner with major universities anywhere in the world to get technical assistance for local community health interventions

## Genetic Counseling

City of Hope

## Management of Chronic Disease

Specialty care for patients with diabetes such as endocrinology, screening for retinopathy and nutrition education

## Behavioral Health

Psychiatric services

Mental health counseling

Pain and addiction management

# Students at Round Valley Tribes Video Conferencing With UC Davis Dept. of Pediatric Endocrinology

## Key activities include:

- Personal Health Promotion
- Exploring career choices in health
- Experiencing technology



# Sonoma County Indian Health Project

- Speaker Larry Levi conducting a class on sexual harassment with three clinics via video conferencing. Attendance: 60+
- Round Valley
- Pit River
- K'ima:w



# The Advantages of On-Site Retinal Screening

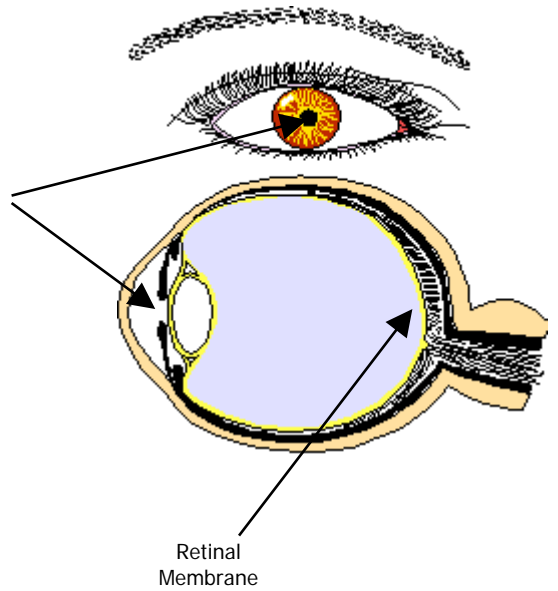
# Review of the Screening Process

A typical screening takes about ten minutes

- 1 minute to pull up data / enter demographic data
- 2 minutes for teaching
- 5 minutes for image capture
- 2 minutes for uploading images and sending to ophthalmologist.

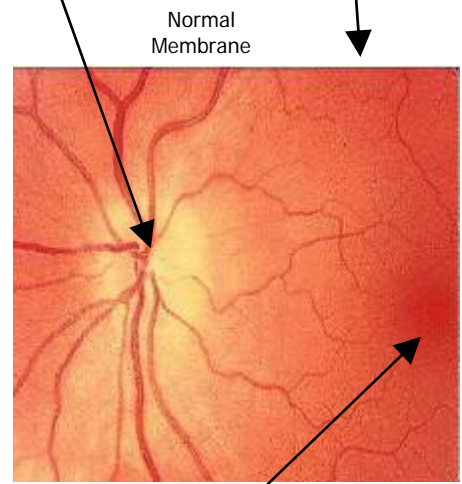


# Eye Care Education



Optic Nerve and blood supply enters and exits here.

Picture of retinal membrane looking into the pupil. That is sent to the Ophthalmologist for evaluation



Abnormal Membrane (Diabetic Retinopathy)



## Prevention of Blindness

# Tele-Ophthalmology



# Advantages of Retinal Screening

- Allows for early detection of eye disease
- Annual eye screening for diabetic patients help to reduce the risk of blindness
- Onsite availability of a retinal screening camera combined with outreach efforts makes it possible to increase retinal screening significantly which can:
  - increase GPRA rates for retinal screening
  - improve patient care

**THANK YOU**

**[steve.viramontes@ihs.gov](mailto:steve.viramontes@ihs.gov)**