

IHS Influenza Kick Off 2012-2013 Season

Overview

- Update from CDC – Dr. Lisa Grohskopf
 - Overview of the 2011-2012 influenza season
 - Vaccination and antiviral treatment recommendations for 2012-2013
 - Update on H3N2 variant
- IHS Influenza Awareness System (IIAS) - Amy Groom
 - National ILI reports
 - New Area ILI report
 - Accessing reports
- IHS 2011-2012 recap – Amy Groom
 - Influenza-Like-Illness
 - Vaccine coverage
- Influenza educational resources – Cheyenne Jim

IHS Influenza Awareness System

IIAS TEAM:

AMY GROOM, CHEYENNE JIM, LARRY LAYNE, DEBORAH
SUMMONS

IHS Influenza Awareness System (IIAS)

- Developed in March 2009 in response to the H1N1 pandemic
- Collects data on influenza-like-illness and influenza vaccinations on daily basis from RPMS databases at participating sites
 - Data are securely transmitted to the IHS Division of Epidemiology and Disease Prevention
- Weekly reports on ILI and influenza vaccination will be posted on the IHS flu website beginning Oct. 4th (www.ihs.gov/flu)
- Participation in the IIAS meets the Meaningful Use requirement re: syndromic surveillance
- Information on installing the patch, troubleshooting problems, and setting email notifications for IIAS exports can be found at: www.ihs.gov/flu

Reports

- National report
 - Posted weekly
 - ILI trend over time
 - ILI by IHS region
 - Influenza vaccine coverage by age and risk groups
- NEW Area level report
 - Available weekly to Area contacts
 - ILI trend over time for Area vs. National
 - Influenza vaccine coverage by facility
- To request access to reports, send an email to:
Deborah.Summons@ihs.gov and Larry.Layne@ihs.gov

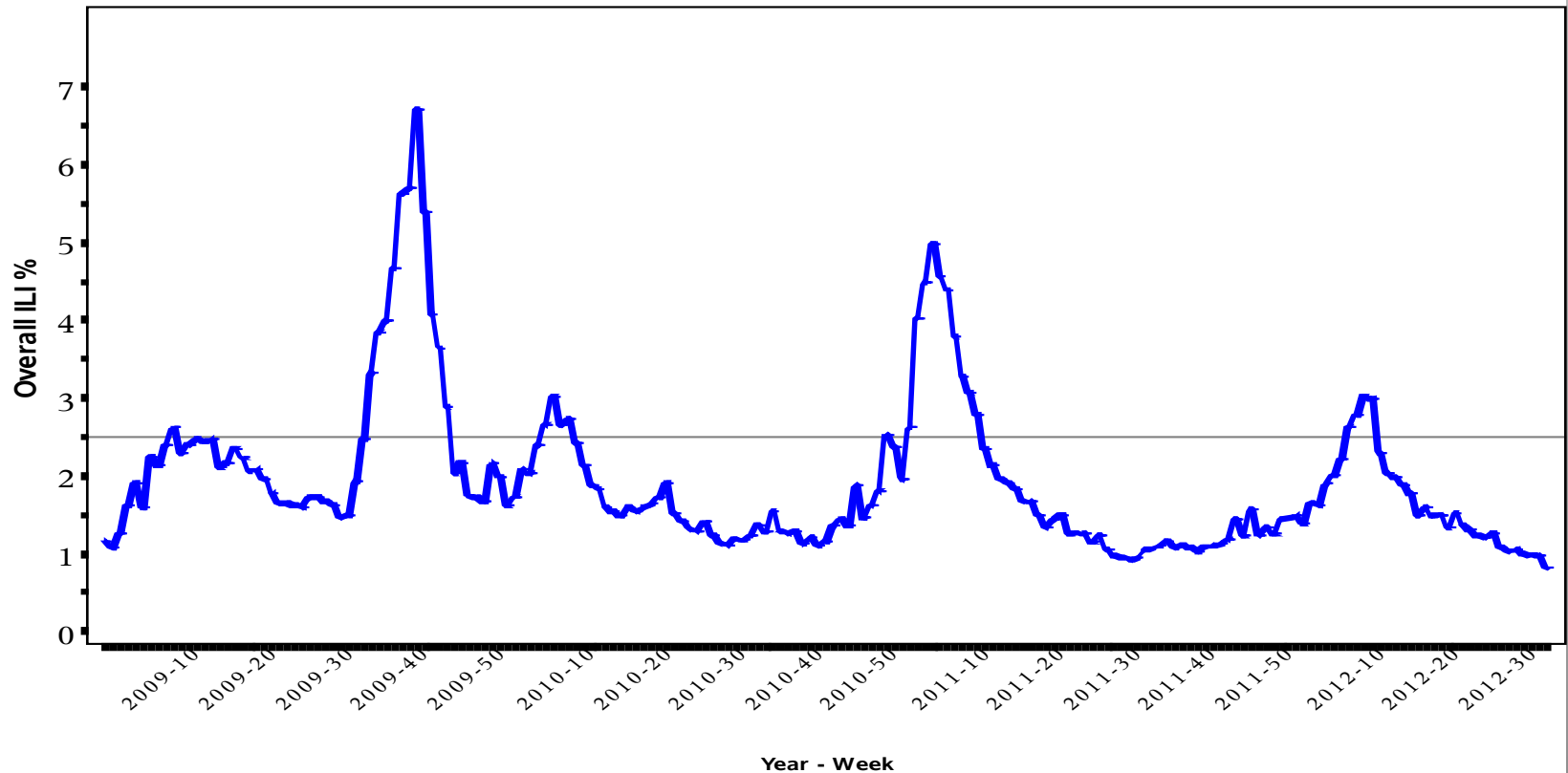
IHS 2011-2012 INFLUENZA SEASON - RECAP

2011-2012 IIAS Participation

- 136 – 155 exporting databases
 - Exporting databases may contain data for multiple facilities
- Issues
 - Sites dropping on and off
 - Non-RPMS sites
 - Data are dynamic

IHS Influenza Awareness System (IIAS) Influenza-like-Illness (ILI) March 2009 – Aug. 2012

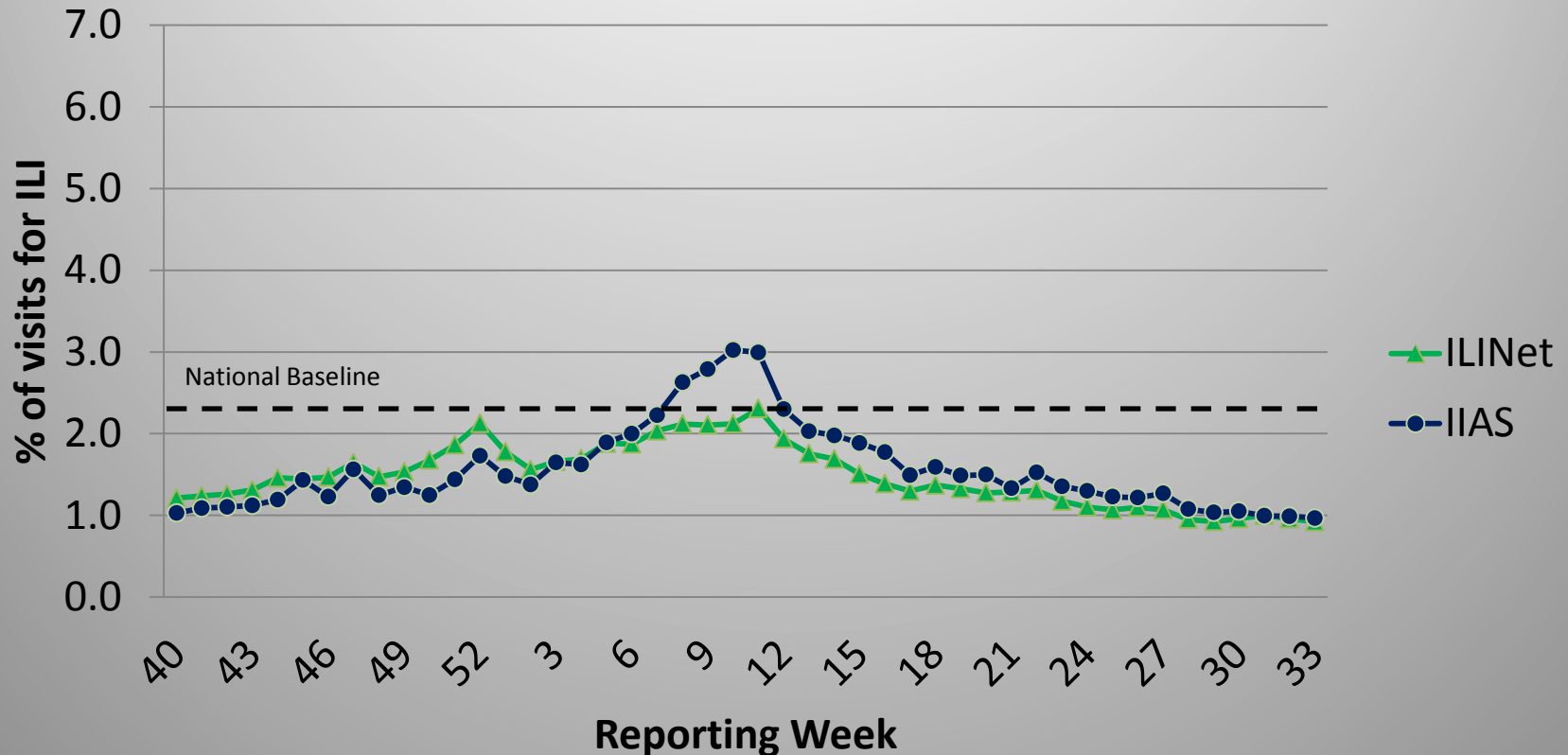
Percentage of Visits for Influenza-like Illness (ILI) per week
Overall ILI % (ILI visits per week / Total visits per week)
(ILI) in IHS, 03/23/2009
through 08/25/2012



All data are preliminary and may change as more reports are received.
The baseline is the mean percentage of patient visits for ILI during non-influenza weeks for the previous two seasons plus two standard deviations.

ILI for 2011-2012 Season

IIAS* vs. ILINet**



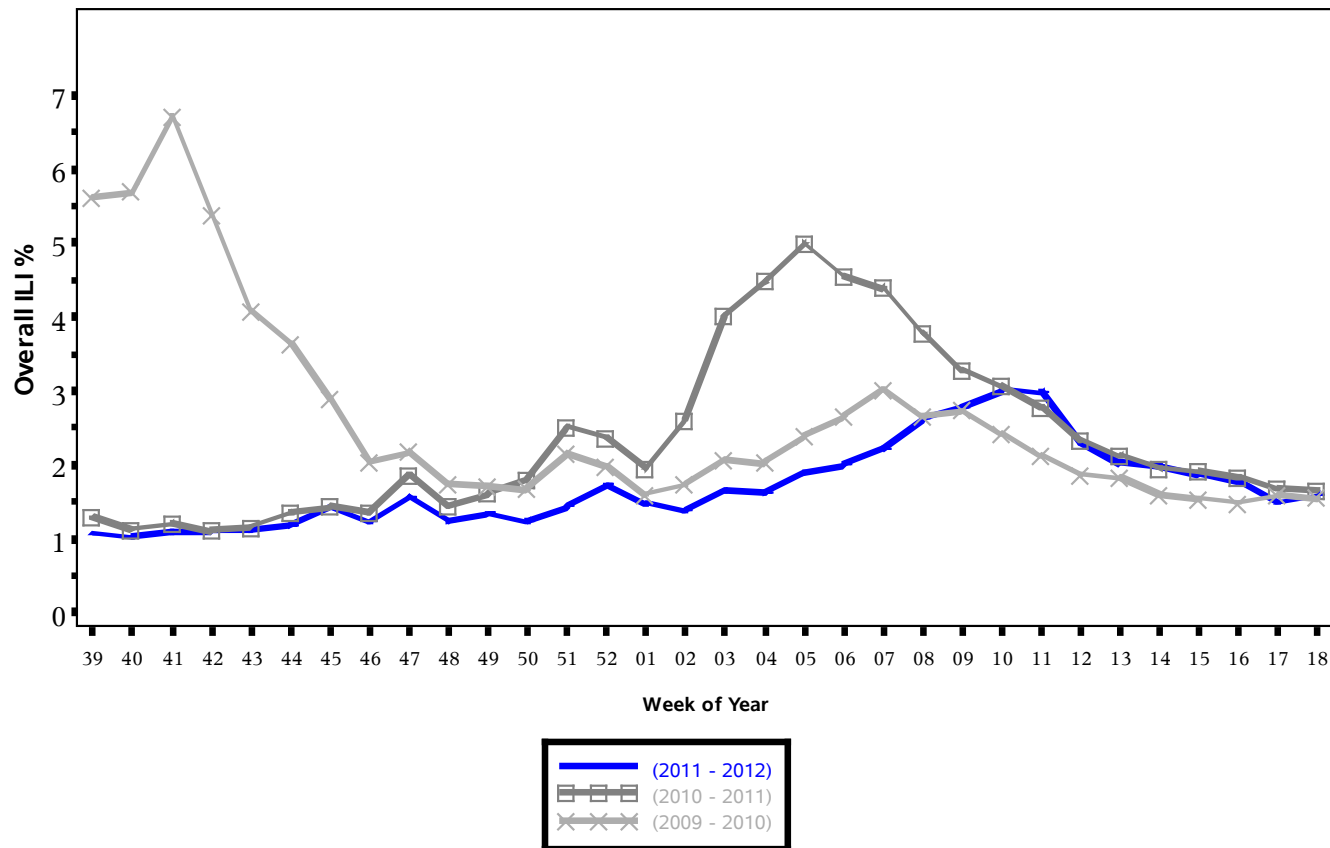
• IHS Influenza Awareness System, 2011-2012 season, weeks 40 - 33. www.ihs.gov/flu

** ILINet, 2011-2012 season, weeks 40 - 33 - available at: <http://www.cdc.gov/flu/weekly/>

IIAS ILI by flu season

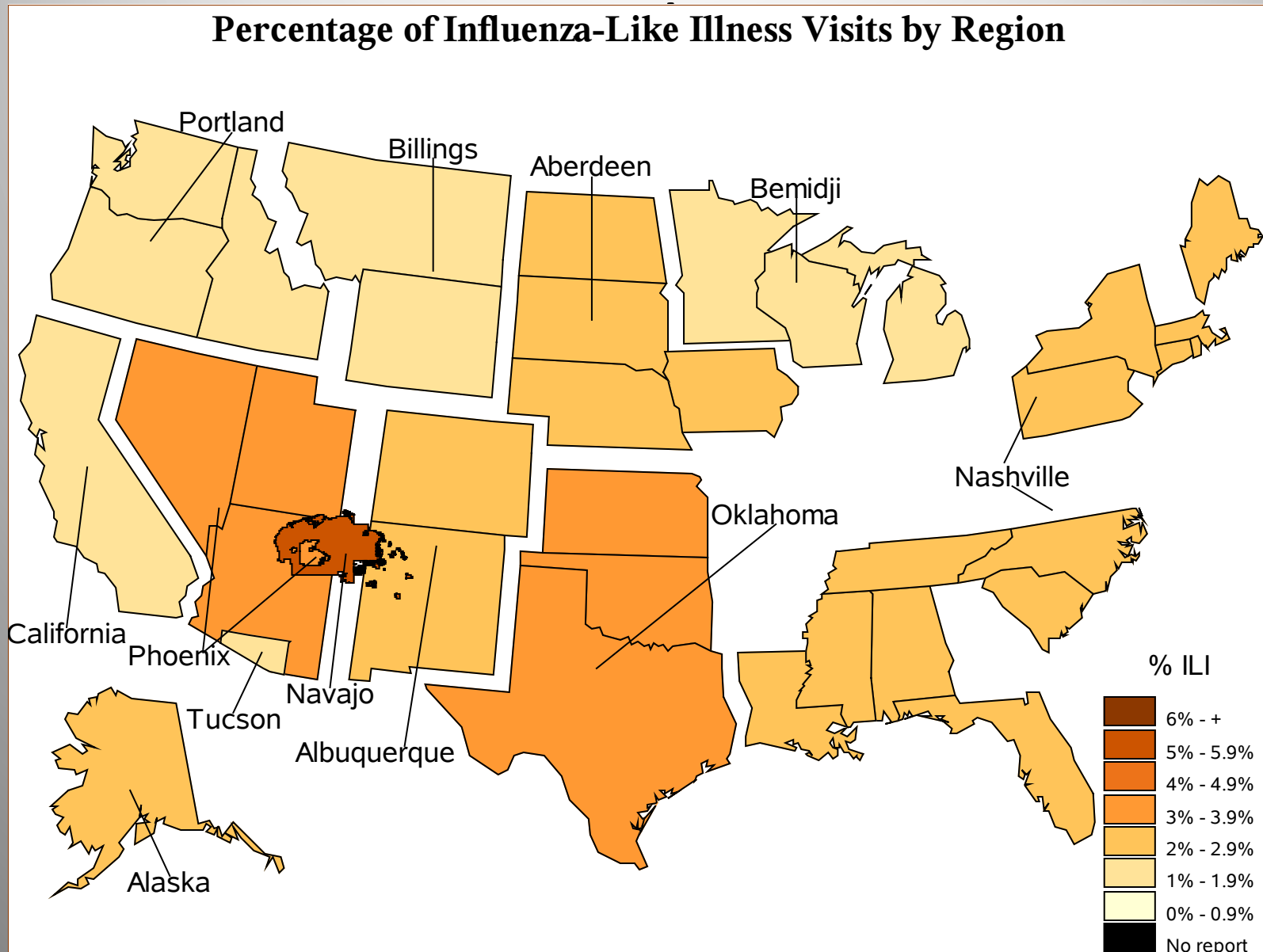
2009-10, 2010-11, 2011-12

Percentage of Visits for Influenza-like Illness (ILI) per week
Overall ILI % (ILI visits per week / Total visits per week)
(ILI) in IHS, October
through April



ILI by IHS Area – Week 10

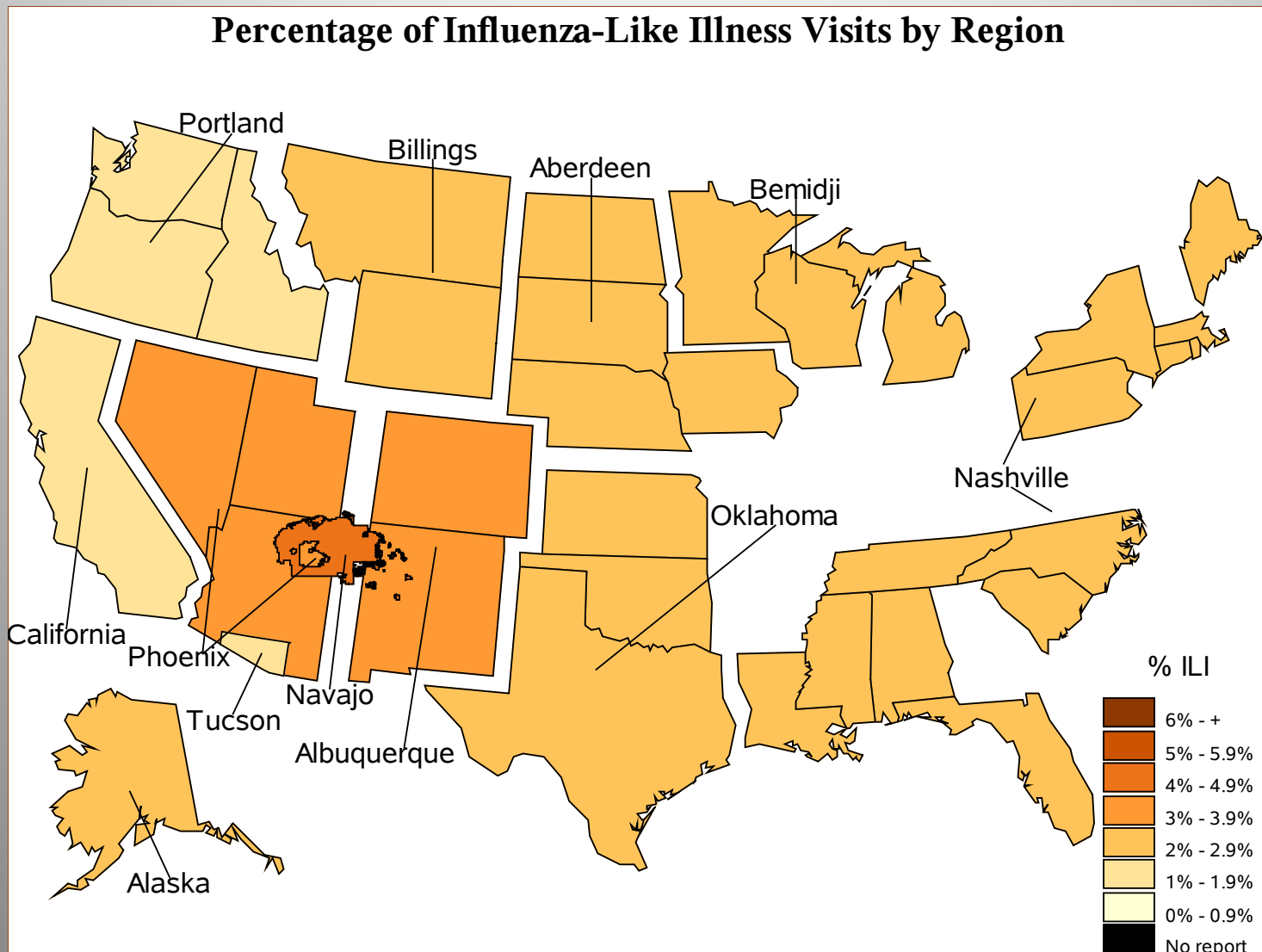
Percentage of Influenza-Like Illness Visits by Region



ILI by IHS Area

Week 11

Percentage of Influenza-Like Illness Visits by Region



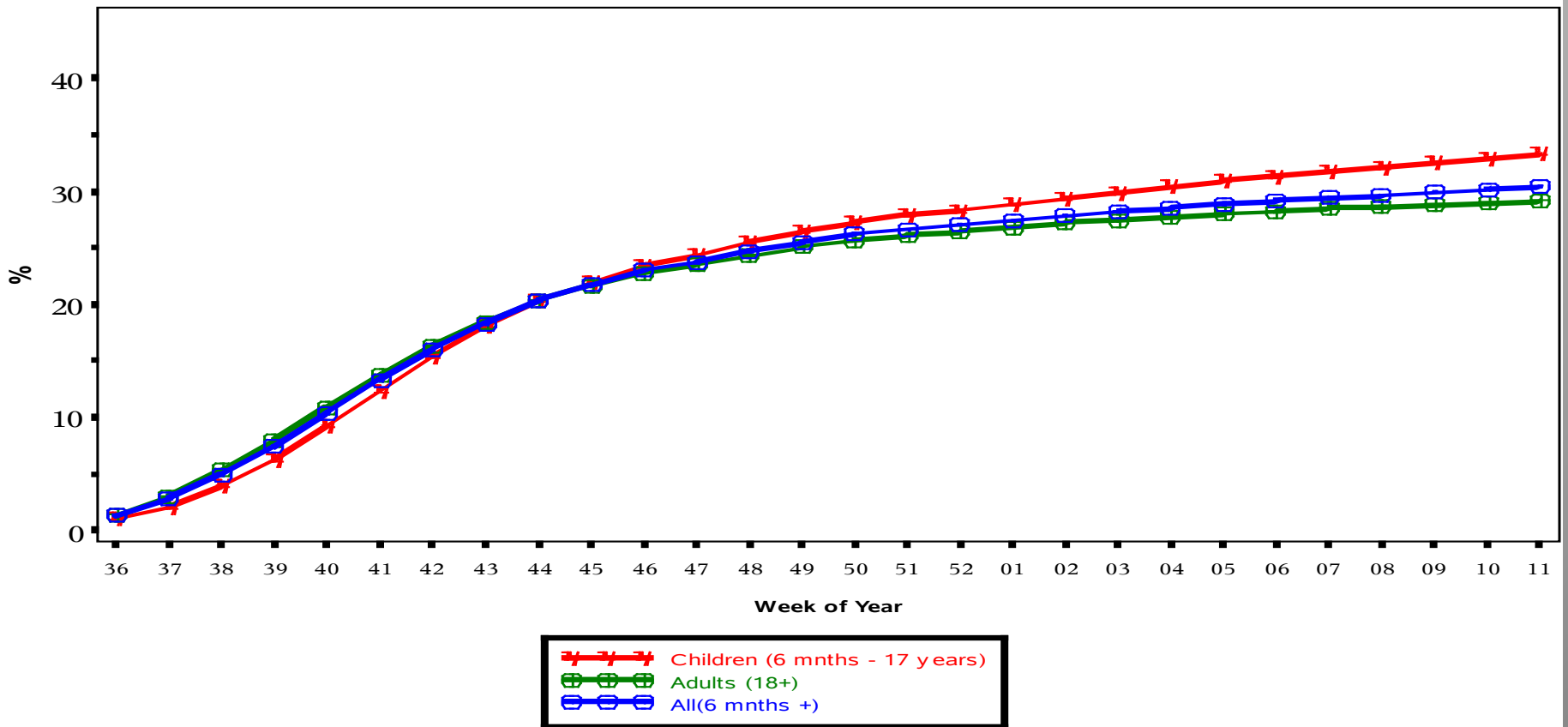
INFLUENZA VACCINE COVERAGE

Influenza Vaccine Coverage

- Multiple tools to monitor flu vaccine coverage throughout the season
 - IIAS reports
 - RPMS Immunization Package influenza reports
- Final influenza vaccine coverage report for patients and Healthcare Personnel for the 2011-2012 season can be found at: www.ihs.gov/flu, under the “Educational Resources” link.

IIAS Overall Influenza Vaccine Coverage as of 3/17/12

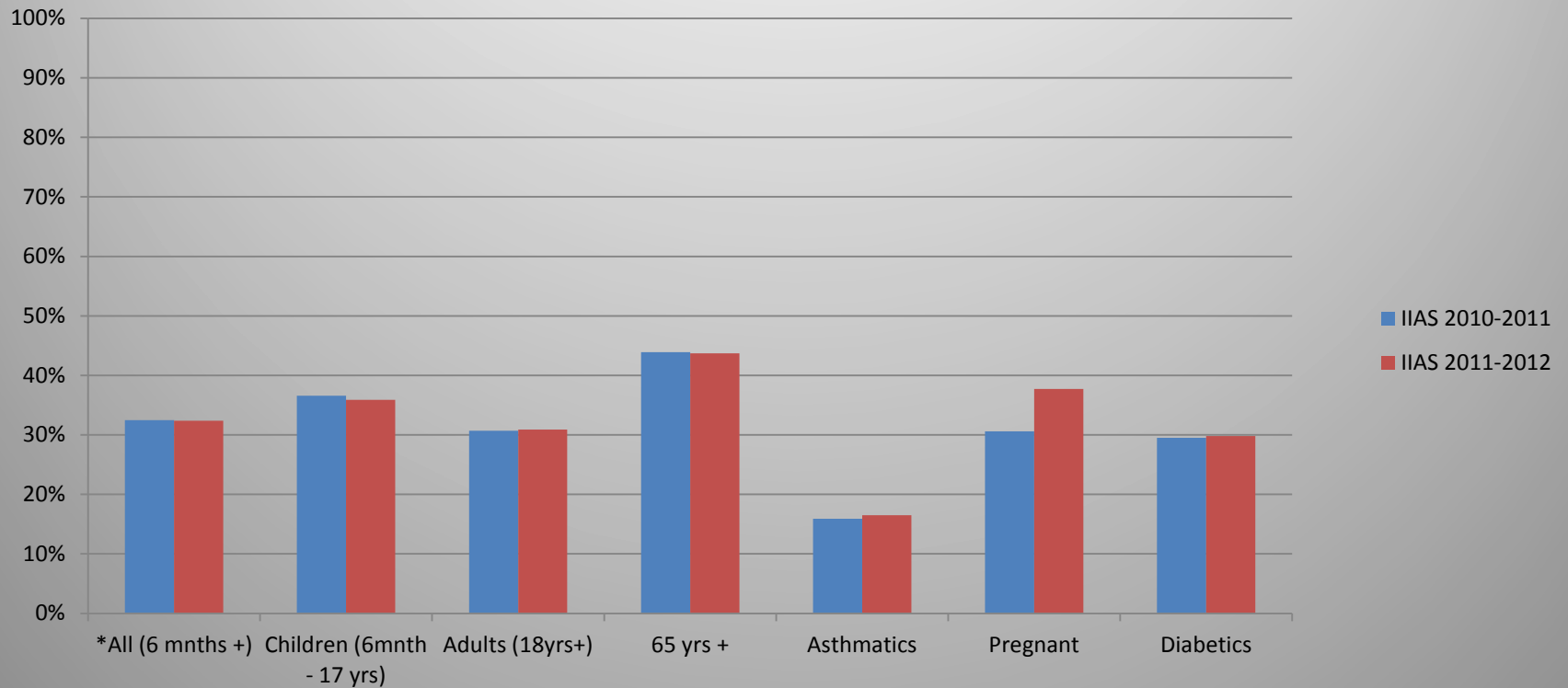
Influenza Vaccine Coverage, IHS Influenza Awareness System
Weeks 36 (09/04/2011) through 11 (03/17/2012), 2011 - 2012



(Active Clinical Population covered by the IIAS)
(*Includes all doses administered.)

IIAS

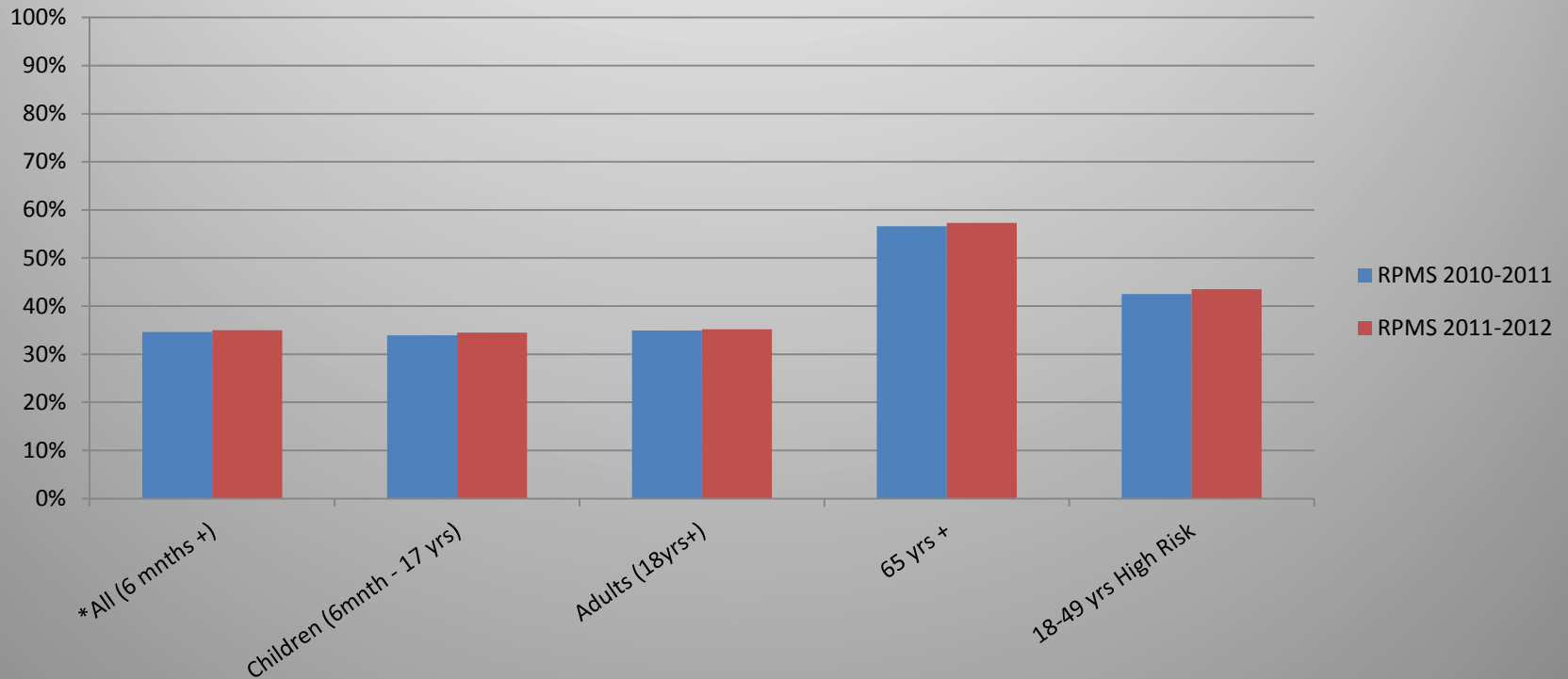
National IHS Influenza Vaccine Coverage End of Season (April/May)



[Source: IHS Influenza Vaccine Coverage Report, 2011-2012.](#)

RPMS Immunization Reports

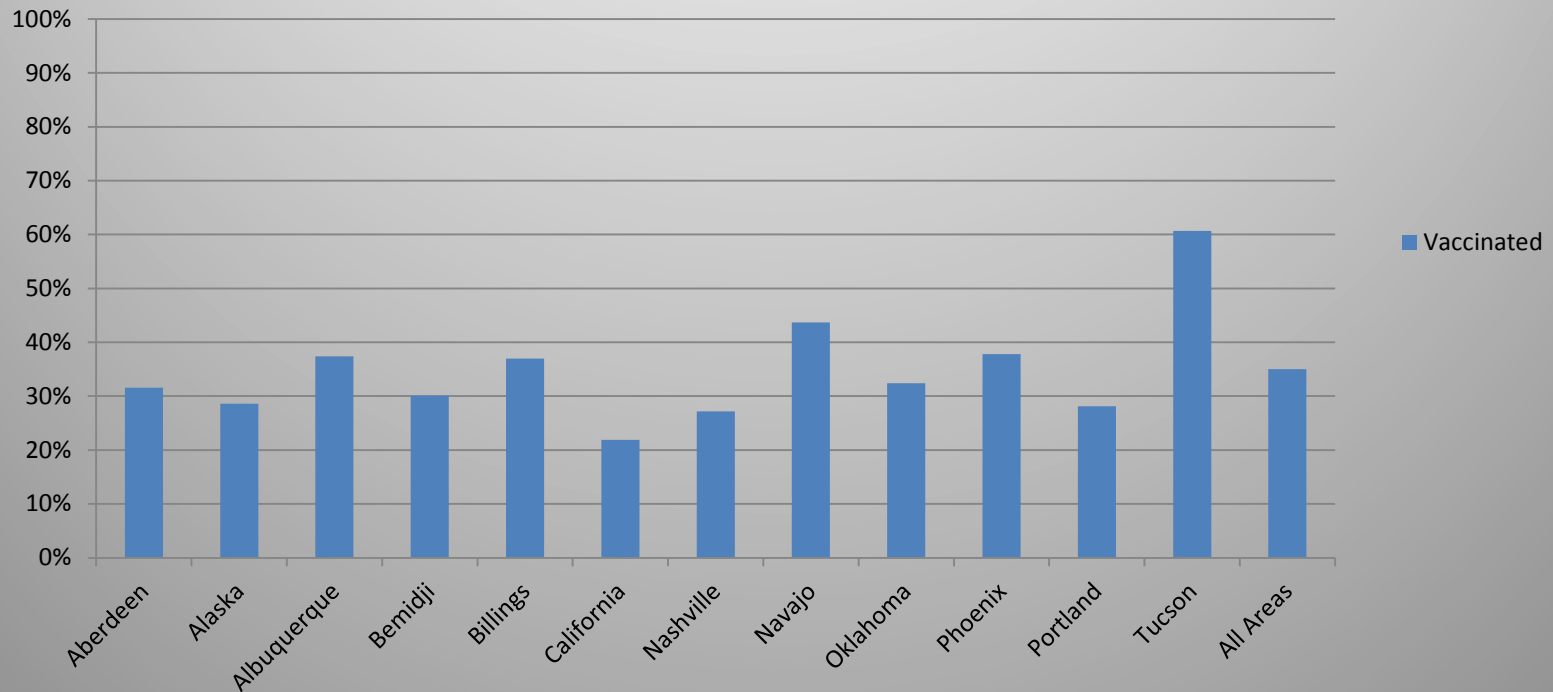
National IHS Influenza Vaccine Coverage as of March 31st, 2012



Source: [IHS Influenza Vaccine Coverage Report, 2011-2012.](#)

RPMS Influenza

IHS Influenza Vaccine Coverage by IHS Area
All Ages
As of March 31st, 2012

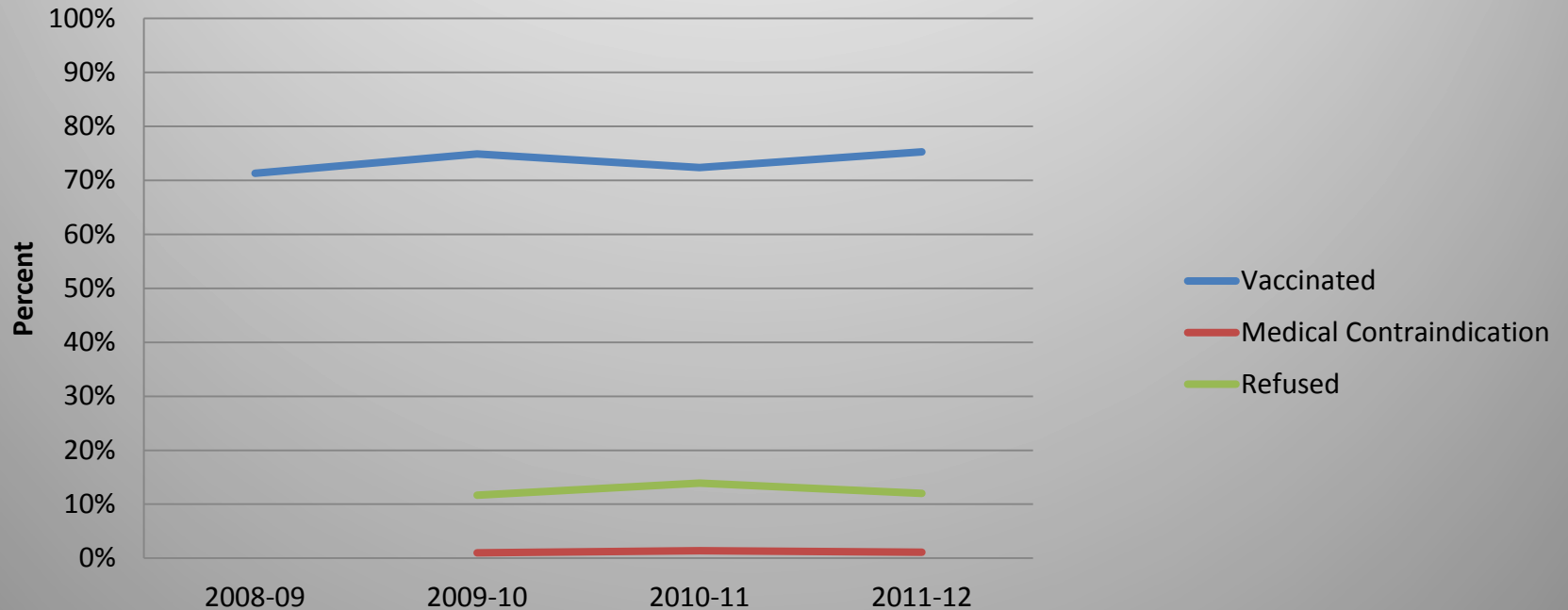


N = 808,178. Based on Active Clinical Users

Source: [IHS Influenza Vaccine Coverage Report, 2011-2012](#).

Healthcare Personnel

Healthcare Personnel Seasonal Influenza Vaccine Coverage
2008 - 2012*



Summary

- IIAS ILI trend very similar to ILI trend reported by CDC from ILINet
- 2011-2012 was a late, relatively mild influenza season
 - ILI for IHS peaked in weeks 10 and 11 (March 4th – 17th, 2012)
 - ILI for U.S. (ILINet) peaked at week 11
- Influenza vaccination rates within IHS remained static compared to coverage for the 2010-2011 season
- Overall coverage was ~ 33% - 35%
 - Significant variation by IHS region
- We must do better
 - Area Level
 - Encourage site participation in the IIAS
 - Review Area IIAS reports to identify trends in ILI and facilities with low vaccine coverage
 - Facility Level:
 - Increase access to flu vaccines – pharmacy-based clinics, walk-in clinics, community clinics
 - Monitor influenza vaccine coverage weekly using the RPMS Influenza report
 - Utilize reminder recall