

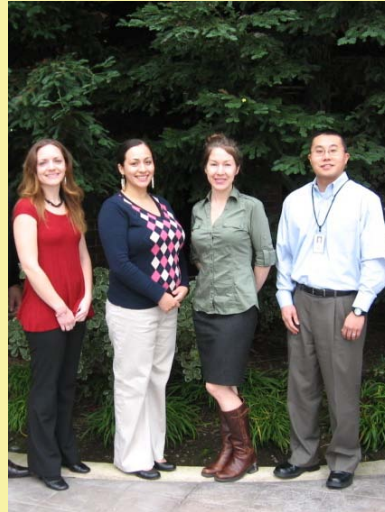


# CALIFORNIA TRIBAL EPIDEMIOLOGY CENTER

CALIFORNIA RURAL INDIAN HEALTH BOARD, INC. 1969



## California Tribal Epidemiology Center



**Kristal Chichlowska, PhD, MPH (Colville/Spokane)**  
**Director**



# CALIFORNIA TRIBAL EPIDEMIOLOGY CENTER

CALIFORNIA RURAL INDIAN HEALTH BOARD, INC. 1969



## **Our Mission**

**To improve American Indian health in California to the highest level by engaging American Indian communities in collecting and interpreting health information to establish health priorities, monitor health status, and develop effective public health services that respect cultural values and traditions of the communities.**



# CALIFORNIA TRIBAL EPIDEMIOLOGY CENTER

CALIFORNIA RURAL INDIAN HEALTH BOARD, INC. 1969



## California Tribal Epidemiology Center

- **Established in 2005**
- **Currently 19 CTEC-member Tribal Health Programs (THP)**
- **Core staff**
  - **PhD Epidemiologist**
  - **Medical Epidemiologist**
  - **Associate Epidemiologist**
  - **Program Coordinator**



# CALIFORNIA TRIBAL EPIDEMIOLOGY CENTER

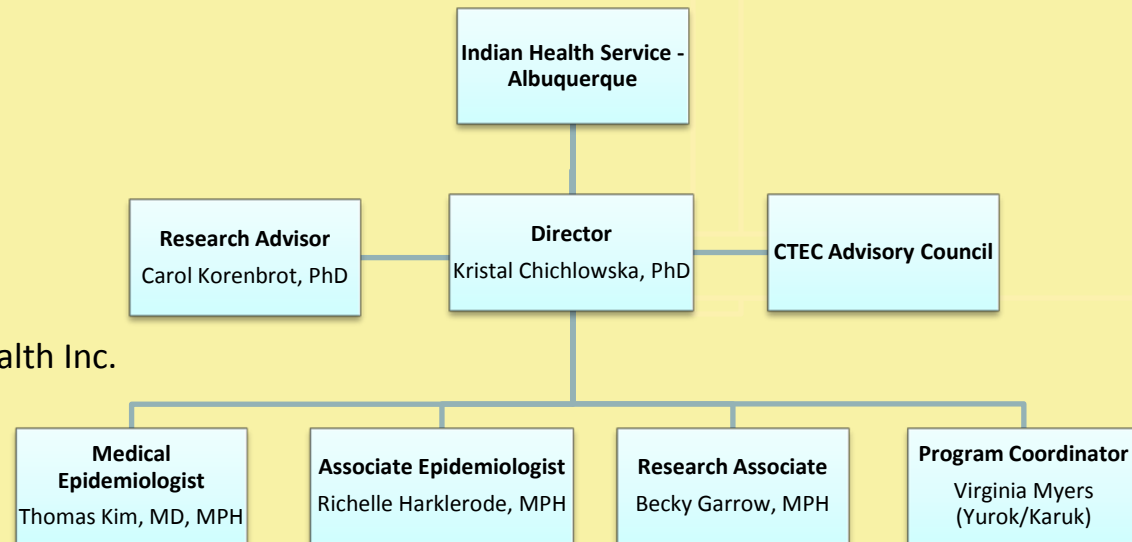
CALIFORNIA RURAL INDIAN HEALTH BOARD, INC. 1969



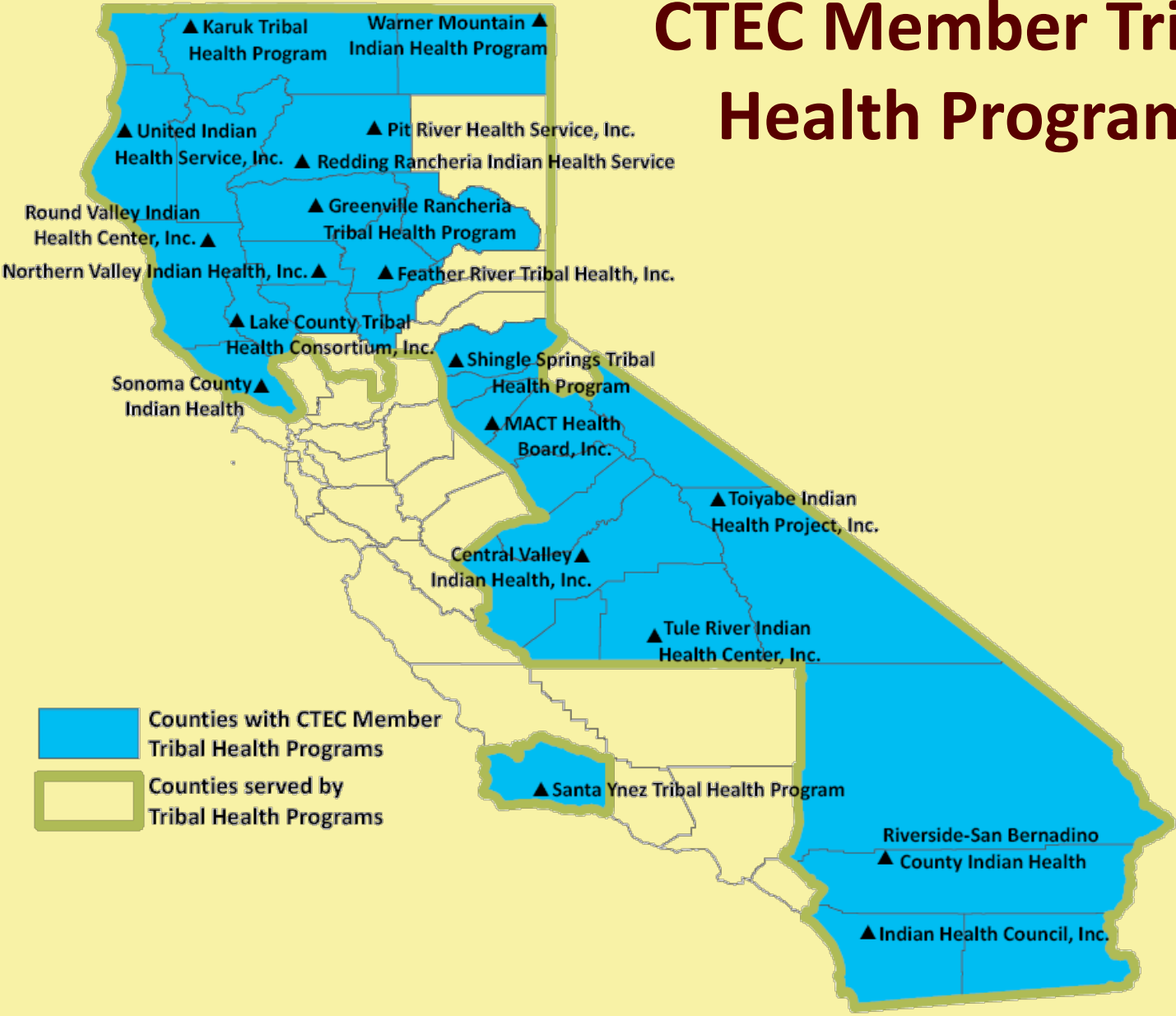
## CTEC Member Programs:

1. Central Valley Indian Health
2. Feather River Tribal Health
3. Greenville Rancheria Clinic
4. Indian Health Clinic
5. Karuk Tribal Health
6. Lake County Tribal Health Consortium
7. MACT Health Board
8. Northern Valley Indian Health
9. Pit River Health Services
10. Redding Rancheria Indian Health Clinic
11. Round Valley Indian Health
12. Riverside-San Bernardino County Indian Health Inc.
13. Santa Ynez Indian Health
14. Shingle Springs
15. Sonoma County Indian Health Program
16. Toiyabe Indian Health Project
17. Tule River Indian Health Center
18. United Indian Health Services
19. Warner Mountain Indian Health Program

## CTEC Model



# CTEC Member Tribal Health Programs







# CALIFORNIA TRIBAL EPIDEMIOLOGY CENTER

CALIFORNIA RURAL INDIAN HEALTH BOARD, INC. 1969



## What is Epidemiology?

- 🍷 **The study of how often diseases occur in different groups of people, and why.**
  - 🍷 **Examples of epidemiologic studies include prevalence of asthma to determine housing conditions associated with asthma and asthma morbidity, smoking status and its relationship to chronic diseases, etc.**



# CALIFORNIA TRIBAL EPIDEMIOLOGY CENTER

CALIFORNIA RURAL INDIAN HEALTH BOARD, INC. 1969



## What We Do

- 🍷 Assist in improving disease surveillance
- 🍷 Assist in emergency preparedness capacity
- 🍷 Resource in writing public health grants
- 🍷 Liaison between tribal health programs and local, state, and federal governments
- 🍷 Studies requested by Tribes and THPs



# CALIFORNIA TRIBAL EPIDEMIOLOGY CENTER

CALIFORNIA RURAL INDIAN HEALTH BOARD, INC. 1969



## CTEC Advisory Council

- 🍷 **10 members**
  - 🌱 **3 Community Representatives**
  - 🌱 **3 Provider Representatives**
  - 🌱 **3 Technical Representatives**
  - 🌱 **1 Urban Indian Health Representative**







# CALIFORNIA TRIBAL EPIDEMIOLOGY CENTER

CALIFORNIA RURAL INDIAN HEALTH BOARD, INC. 1969



## **CRIHB Institutional Review Board**

-  **This board reviews all studies at CTEC and for other requesting tribal organizations**
-  **Five voting members (at least one Female & one Male), one of whom must be a community representative**



# CALIFORNIA TRIBAL EPIDEMIOLOGY CENTER

CALIFORNIA RURAL INDIAN HEALTH BOARD, INC. 1969



## CTEC Activities

- 🍲 Indian Health Priorities Survey
- 🍲 Tribal Epidemiology Center Consortium
- 🍲 Community Health Profiles
- 🍲 Tribal Asthma Survey Project
- 🍲 Tribal Infectious Disease Project
- 🍲 H1N1 Vaccine Promotion Campaign



# CALIFORNIA TRIBAL EPIDEMIOLOGY CENTER

CALIFORNIA RURAL INDIAN HEALTH BOARD, INC. 1969



## Future Activities

- 🍵 **Yurok Tribe EPA project**
- 🍵 **Injury Linkage Project**
- 🍵 **Dental Caries Prevention through Storytelling Grant**
- 🍵 **Obesity Prevention Grant**



# CALIFORNIA TRIBAL EPIDEMIOLOGY CENTER

CALIFORNIA RURAL INDIAN HEALTH BOARD, INC. 1969



## National Data Sharing Contract

- 🍲 Dr. Yvette Roubideaux is seeking tribal consultation on this Contract that would allow access to Tribal level data





# CALIFORNIA TRIBAL EPIDEMIOLOGY CENTER

CALIFORNIA RURAL INDIAN HEALTH BOARD, INC. 1969



## CTEC Membership

### Signed Data Sharing Agreement

-  Three year agreement
-  Allows CTEC access to your tribal health program data for routine epidemiologic surveillance





# CALIFORNIA TRIBAL EPIDEMIOLOGY CENTER

CALIFORNIA RURAL INDIAN HEALTH BOARD, INC. 1969



## Letters of Support

- 🍷 CTEC is seeking letters of support from California Tribal Chairpersons.



# CALIFORNIA TRIBAL EPIDEMIOLOGY CENTER

CALIFORNIA RURAL INDIAN HEALTH BOARD, INC. 1969



## Acknowledgement of CTEC Staff

- 🍲 **Kristal Chichlowska, PhD, MPH (Colville/Spokane)**
- 🍲 **Thomas Kim, MD, MPH**
- 🍲 **Richelle Harklerode, MPH**
- 🍲 **Virginia Myers (Yurok/Karuk)**



# CALIFORNIA TRIBAL EPIDEMIOLOGY CENTER

CALIFORNIA RURAL INDIAN HEALTH BOARD, INC. 1969



**Thank You!**

**[virginia.myers@crihb.net](mailto:virginia.myers@crihb.net)**

**916-929-9761**