



INDIAN HEALTH SERVICE CALIFORNIA AREA TELE-MEDICINE AND eHEALTH SITES





Telemedicine Services

- 16 retinal screening cameras in the California area
- 15 clinics with video-conferencing equipment installed 8 more sites will receive video-conferencing equipment over the next few months
- 8 sites are receiving specialty care telemedicine services in the areas of: Endocrinology, Nutrition, Psychiatry, Pain & Addiction management and Dermatology
- 3 telemedicine providers at this time: UC Davis Medical Center, New Leaf Treatment Center (Dr. Alex Stalcup) and Dr. David Sprenger (child psychiatry)
- Sonoma County Indian Health has provided a training site for multi-site video conference training

How Can Video Conferencing Services Impact Care?

Health Promotion & Disease Prevention

Clinics can partner with major universities anywhere in the world to get technical assistance for local community health interventions

Management of Chronic Disease

Specialty care for patients with diabetes such as endocrinology, screening for retinopathy and nutrition education

Behavioral Health

Psychiatric services

Mental health counseling

Pain and addiction management

Students at Round Valley Tribes Video Conferencing With UC Davis Dept. of Pediatric Endocrinology

Key activities include:

- Personal Health Promotion
- Exploring career choices in health
- Experiencing technology



Sonoma County Indian Health Project

- Speaker Larry Levi conducting a class on sexual harassment with three clinics via video conferencing. Attendance: 60+
- Round Valley
- Pit River
- K'ima:w



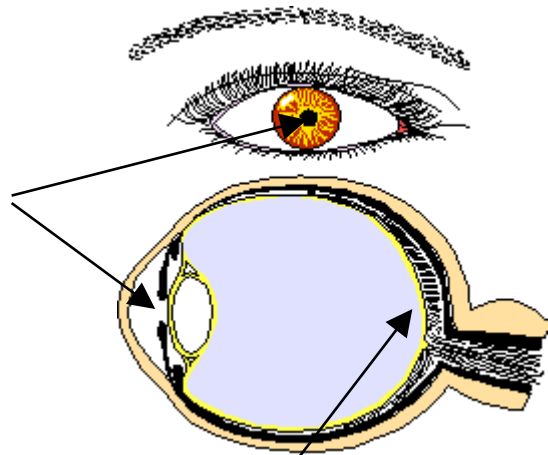
The Advantages of On-Site Retinal Screening

Review of the Screening Process

A typical screening takes about ten minutes

- 1 minute to pull up data / enter demographic data
- 2 minutes for teaching
- 5 minutes for image capture
- 2 minutes for uploading images and sending to ophthalmologist.

Eye Care Education



Retinal Membrane

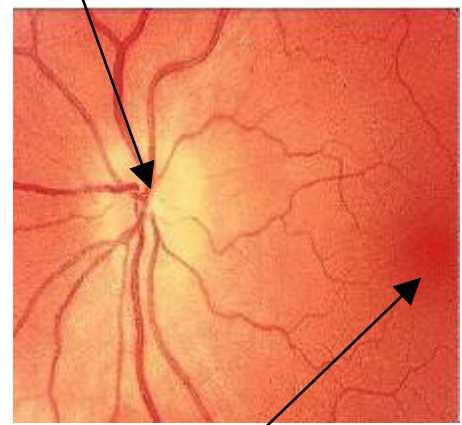
Abnormal Membrane (Diabetic Retinopathy)



Optic Nerve and blood supply enters and exits here.

Picture of retinal membrane looking into the pupil. That is sent to the Ophthalmologist for evaluation

Normal Membrane



Macula (the center of vision)

Prevention of Blindness

Tele-Ophthalmology



Advantages of Retinal Screening

- Allows for early detection of eye disease
- Annual eye screening for diabetic patients help to reduce the risk of blindness
- Onsite availability of a retinal screening camera combined with outreach efforts makes it possible to increase retinal screening significantly which can increase GPRA rates for retinal screening.