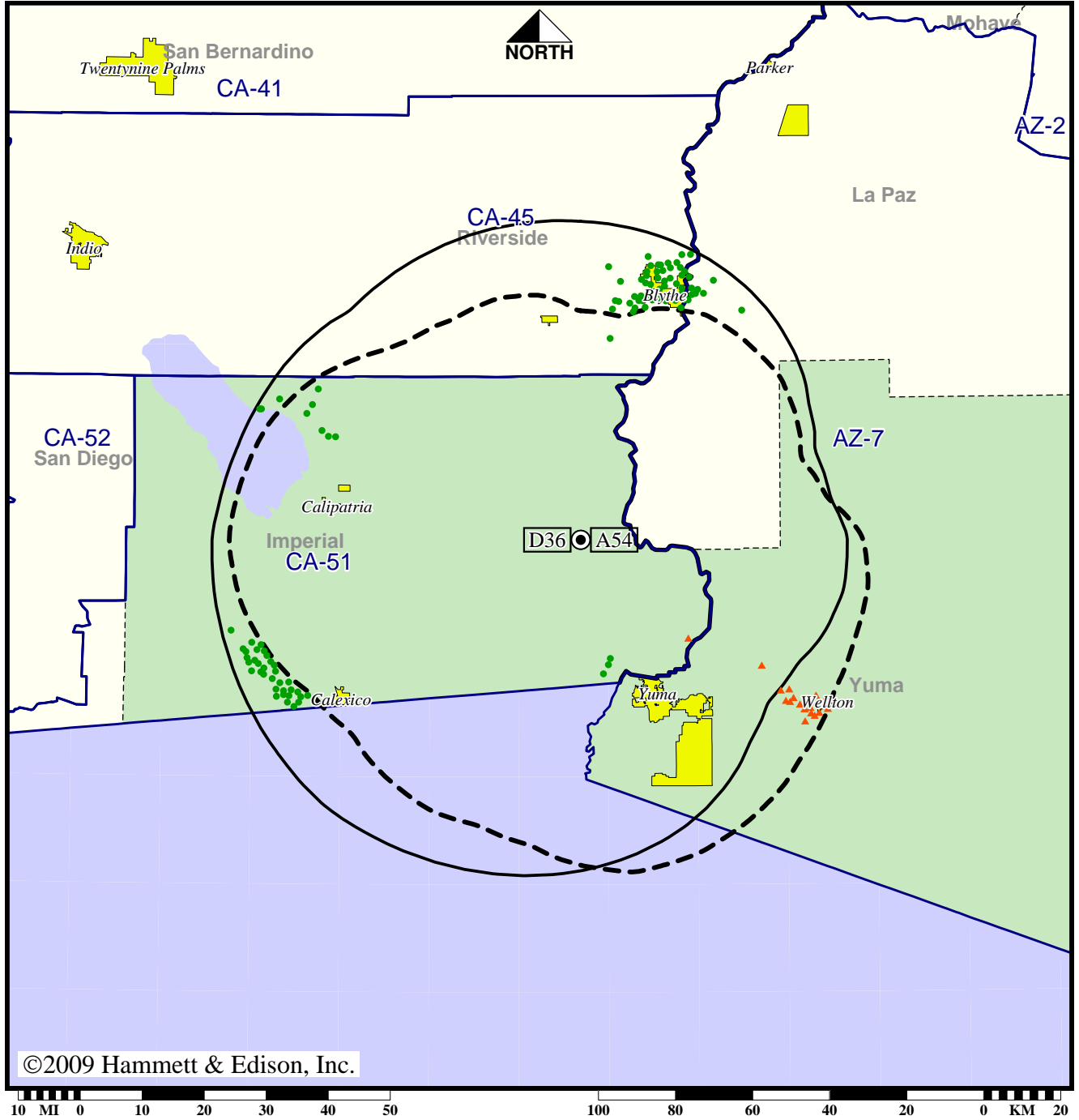


TV Station KAJB • Analog Channel 54, DTV Channel 36 • Calipatria, CA

Expected Operation on June 13: Granted Construction Permit

Digital CP (solid): 155 kW ERP at 476 m HAAT
 vs. Analog (dashed): 5000 kW ERP at 428 m HAAT

Market: Yuma, AZ-EI Centro, CA



©2009 Hammett & Edison, Inc.

- Coverage gained after DTV transition
- No symbol = no change in coverage
- ▲ Coverage lost after DTV transition

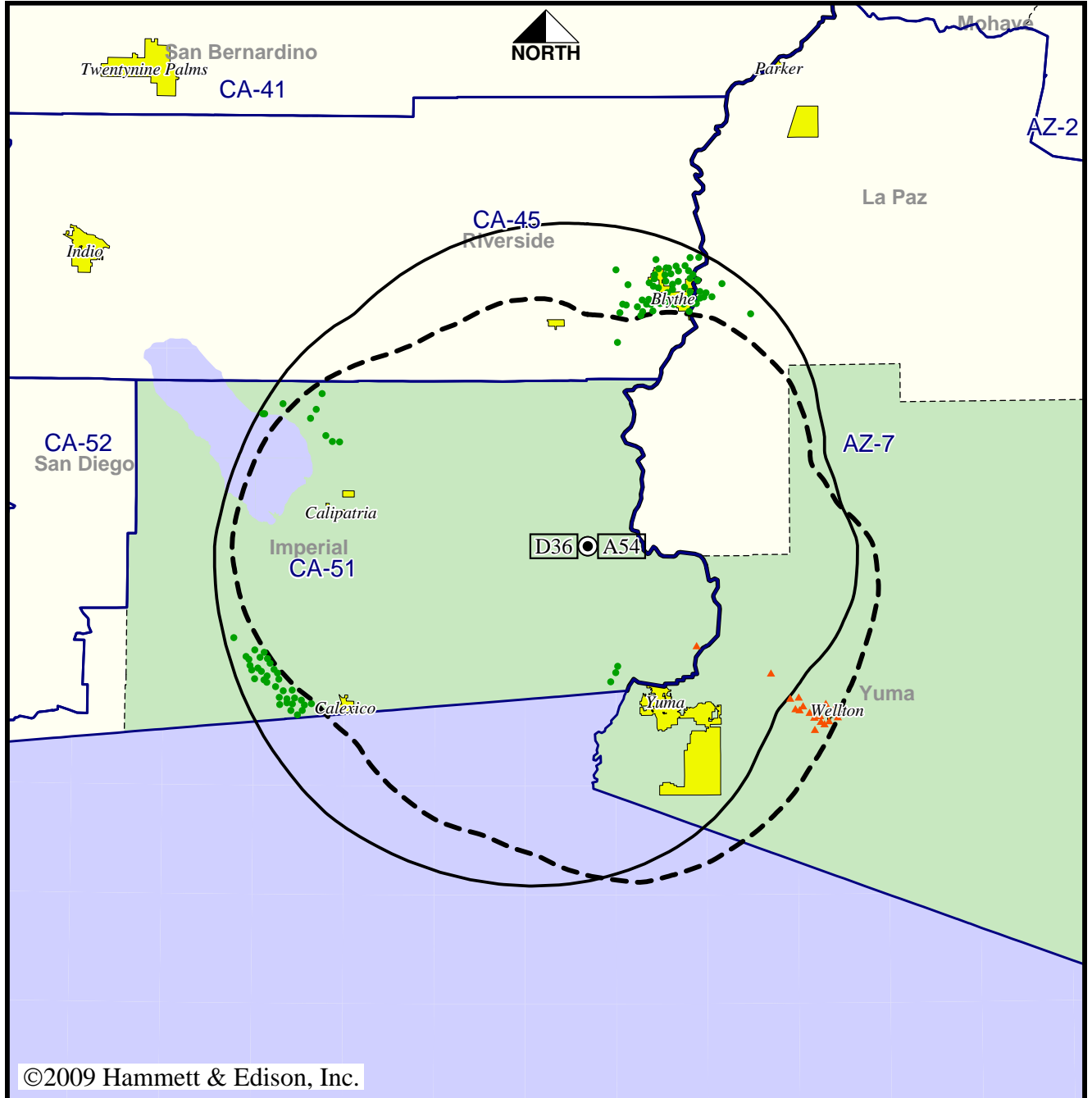
Analog service	297,893 persons
Digital service	318,558
Analog loss	925
Digital gain	21,590
Net gain	20,665

TV Station KAJB • Analog Channel 54, DTV Channel 36 • Calipatria, CA

Approved Post-Transition Operation: Granted Construction Permit

Digital CP (solid): 155 kW ERP at 476 m HAAT
 vs. Analog (dashed): 5000 kW ERP at 428 m HAAT

Market: Yuma, AZ-EI Centro, CA



©2009 Hammett & Edison, Inc.

10 MI 0 10 20 30 40 50 100 80 60 40 20 0 KM 20

- Coverage gained after DTV transition
- No symbol = no change in coverage
- ▲ Coverage lost after DTV transition

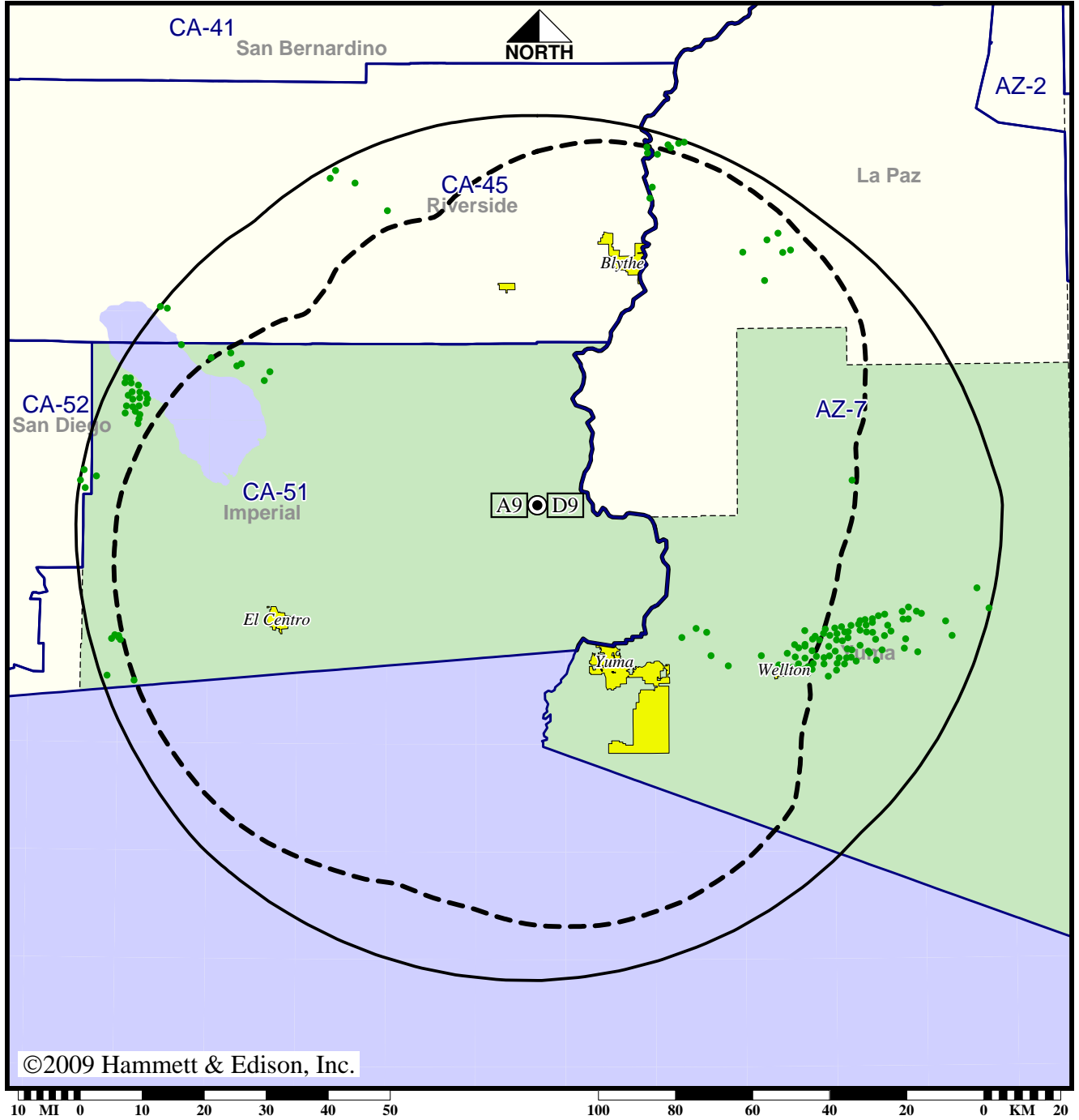
Analog service	297,893 persons
Digital service	318,558
Analog loss	925
Digital gain	21,590
Net gain	20,665

Station KECY-TV • Analog Channel 9, DTV Channel 9 • El Centro, CA

Expected Operation on June 13: Granted Construction Permit

Digital CP (solid): 50.0 kW ERP at 478 m HAAT, Networks: ABC, Fox
 vs. Analog (dashed): 316 kW ERP at 484 m HAAT, Network: Fox

Market: Yuma, AZ-El Centro, CA



©2009 Hammett & Edison, Inc.

- Coverage gained after DTV transition
- No symbol = no change in coverage

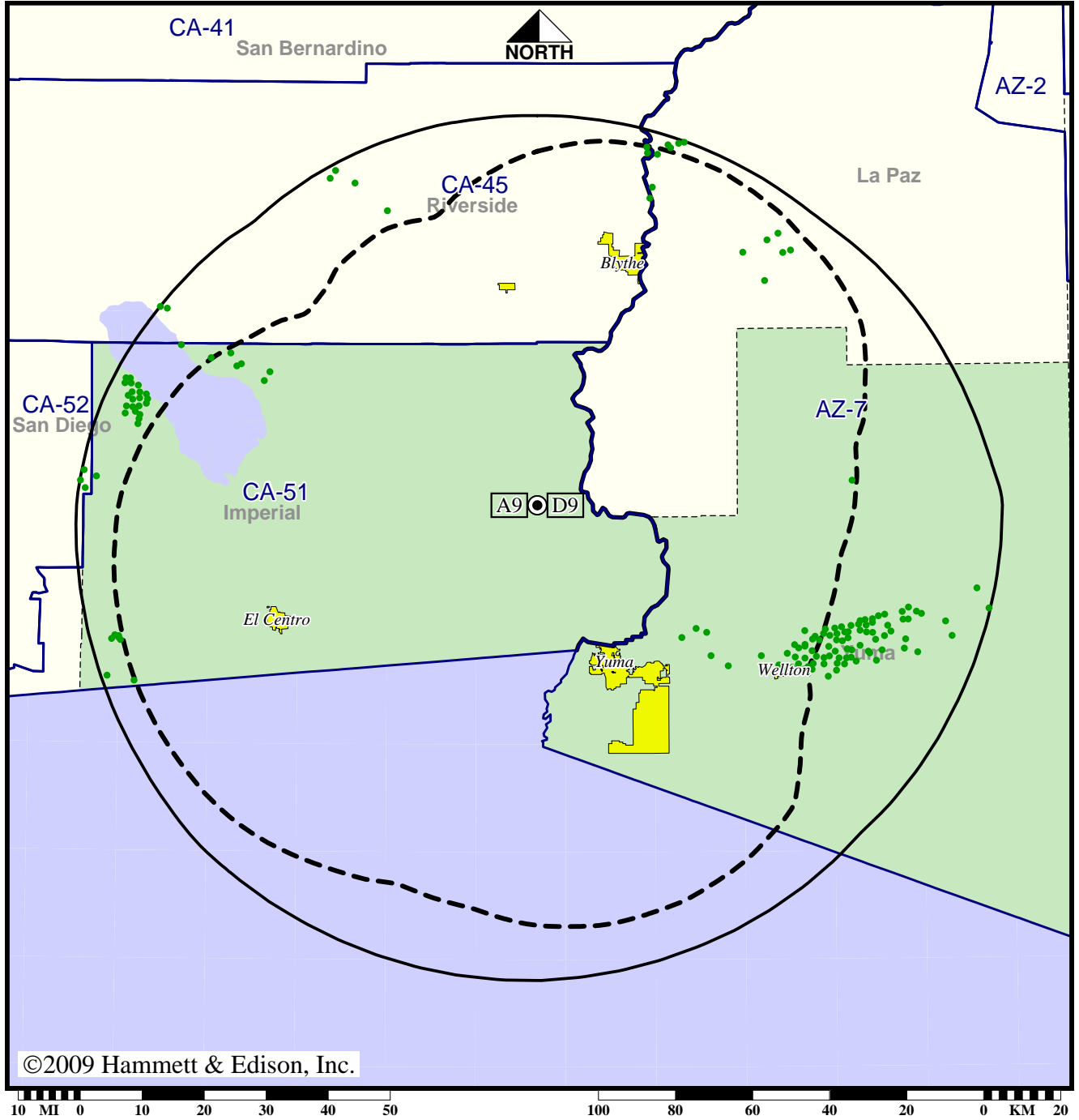
Analog service	320,617 persons
Digital service	326,004
Analog loss	0
Digital gain	5,387
Net gain	5,387

Station KECY-TV • Analog Channel 9, DTV Channel 9 • El Centro, CA

Approved Post-Transition Operation: Granted Construction Permit

Digital CP (solid): 50.0 kW ERP at 478 m HAAT, Networks: ABC, Fox
 vs. Analog (dashed): 316 kW ERP at 484 m HAAT, Network: Fox

Market: Yuma, AZ-El Centro, CA



©2009 Hammett & Edison, Inc.

● Coverage gained after DTV transition
 No symbol = no change in coverage

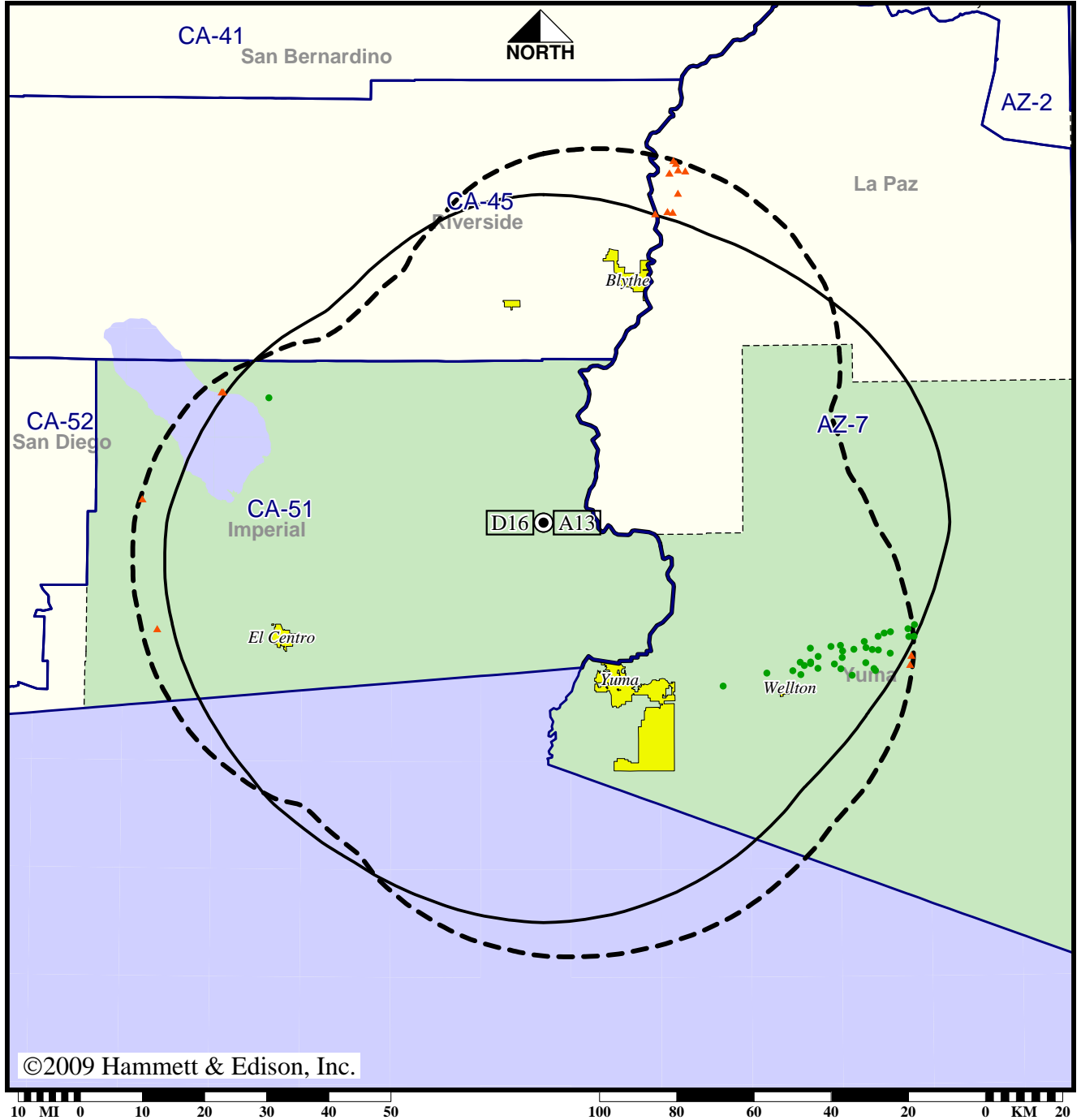
Analog service	320,617 persons
Digital service	326,004
Analog loss	0
Digital gain	5,387
Net gain	5,387

TV Station KSWT • Analog Channel 13, DTV Channel 16 • Yuma, AZ

Expected Operation on June 13: Granted Construction Permit

**Digital CP (solid): 196 kW ERP at 444 m HAAT, Network: CBS
vs. Analog (dashed): 316 kW ERP at 475 m HAAT, Network: CBS**

Market: Yuma, AZ-El Centro, CA



©2009 Hammett & Edison, Inc.

- Coverage gained after DTV transition
- No symbol = no change in coverage
- ▲ Coverage lost after DTV transition

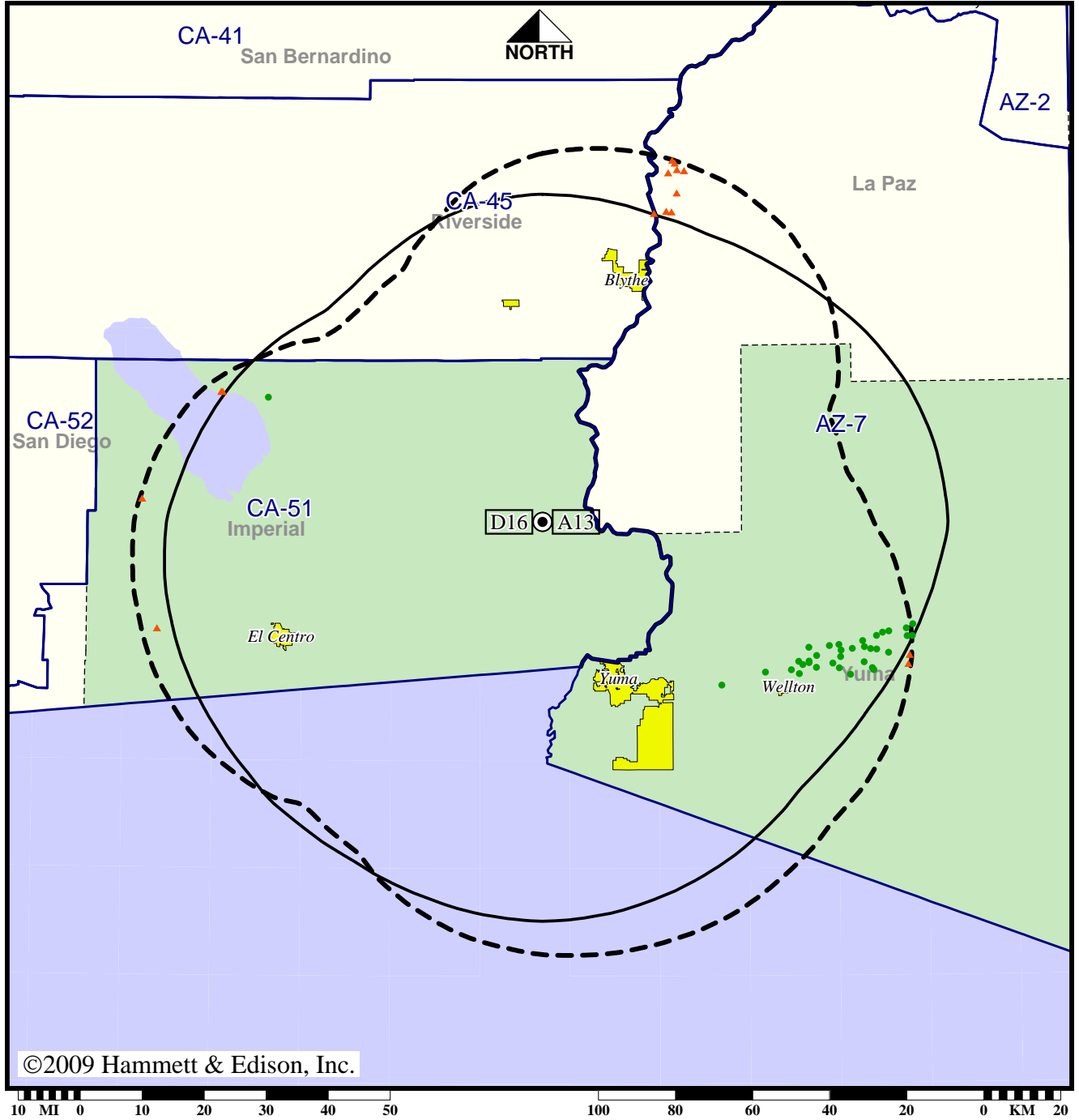
Analog service	322,902 persons
Digital service	323,092
Analog loss	593
Digital gain	783
Net gain	190

TV Station KSWT • Analog Channel 13, DTV Channel 16 • Yuma, AZ

Approved Post-Transition Operation: Granted Construction Permit

Digital CP (solid): 196 kW ERP at 444 m HAAT, Network: CBS
 vs. Analog (dashed): 316 kW ERP at 475 m HAAT, Network: CBS

Market: Yuma, AZ-El Centro, CA



©2009 Hammett & Edison, Inc.

- Coverage gained after DTV transition
- No symbol = no change in coverage
- ▲ Coverage lost after DTV transition

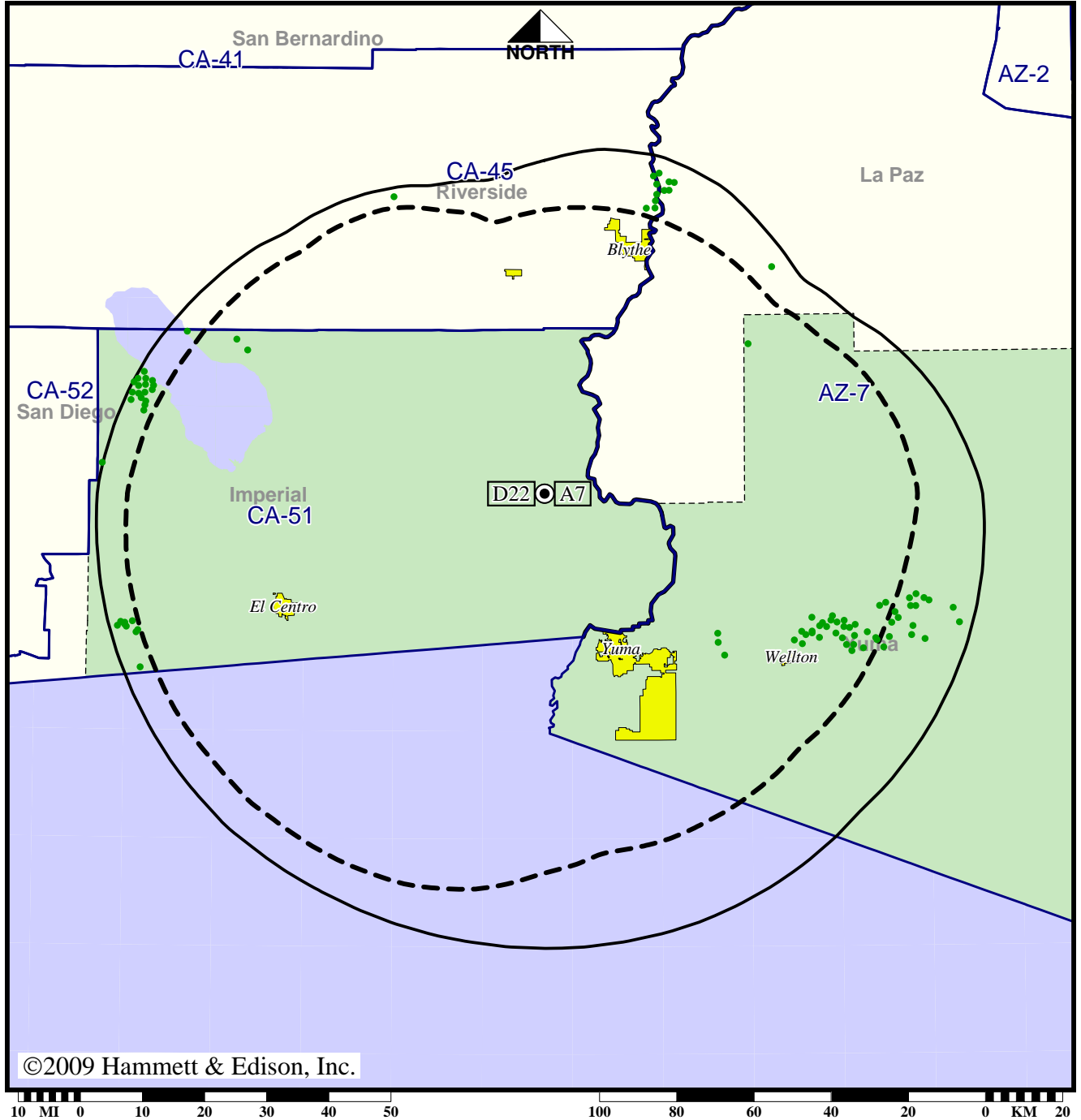
Analog service	322,902 persons
Digital service	323,092
Analog loss	593
Digital gain	783
Net gain	190

TV Station KVYE • Analog Channel 7, DTV Channel 22 • El Centro, CA

Expected Operation on June 13: Granted Construction Permit

Digital CP (solid): 1000 kW ERP at 477 m HAAT
 vs. Analog (dashed): 316 kW ERP at 444 m HAAT

Market: Yuma, AZ-El Centro, CA



©2009 Hammett & Edison, Inc.

● Coverage gained after DTV transition
 No symbol = no change in coverage

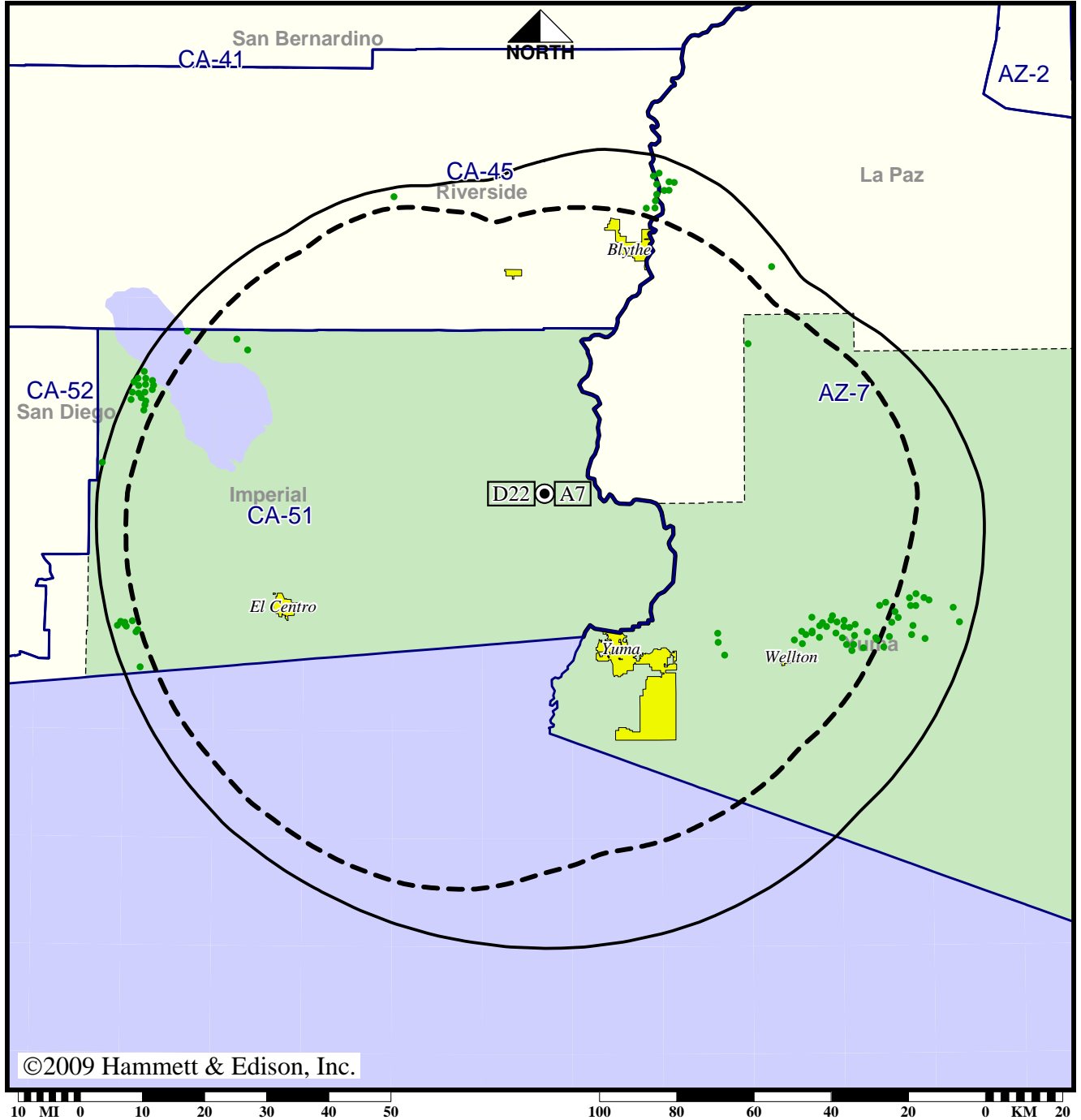
Analog service	322,744 persons
Digital service	325,376
Analog loss	0
Digital gain	2,632
Net gain	2,632

TV Station KVYE • Analog Channel 7, DTV Channel 22 • El Centro, CA

Approved Post-Transition Operation: Granted Construction Permit

Digital CP (solid): 1000 kW ERP at 477 m HAAT
 vs. Analog (dashed): 316 kW ERP at 444 m HAAT

Market: Yuma, AZ-El Centro, CA



©2009 Hammett & Edison, Inc.

● Coverage gained after DTV transition
 No symbol = no change in coverage

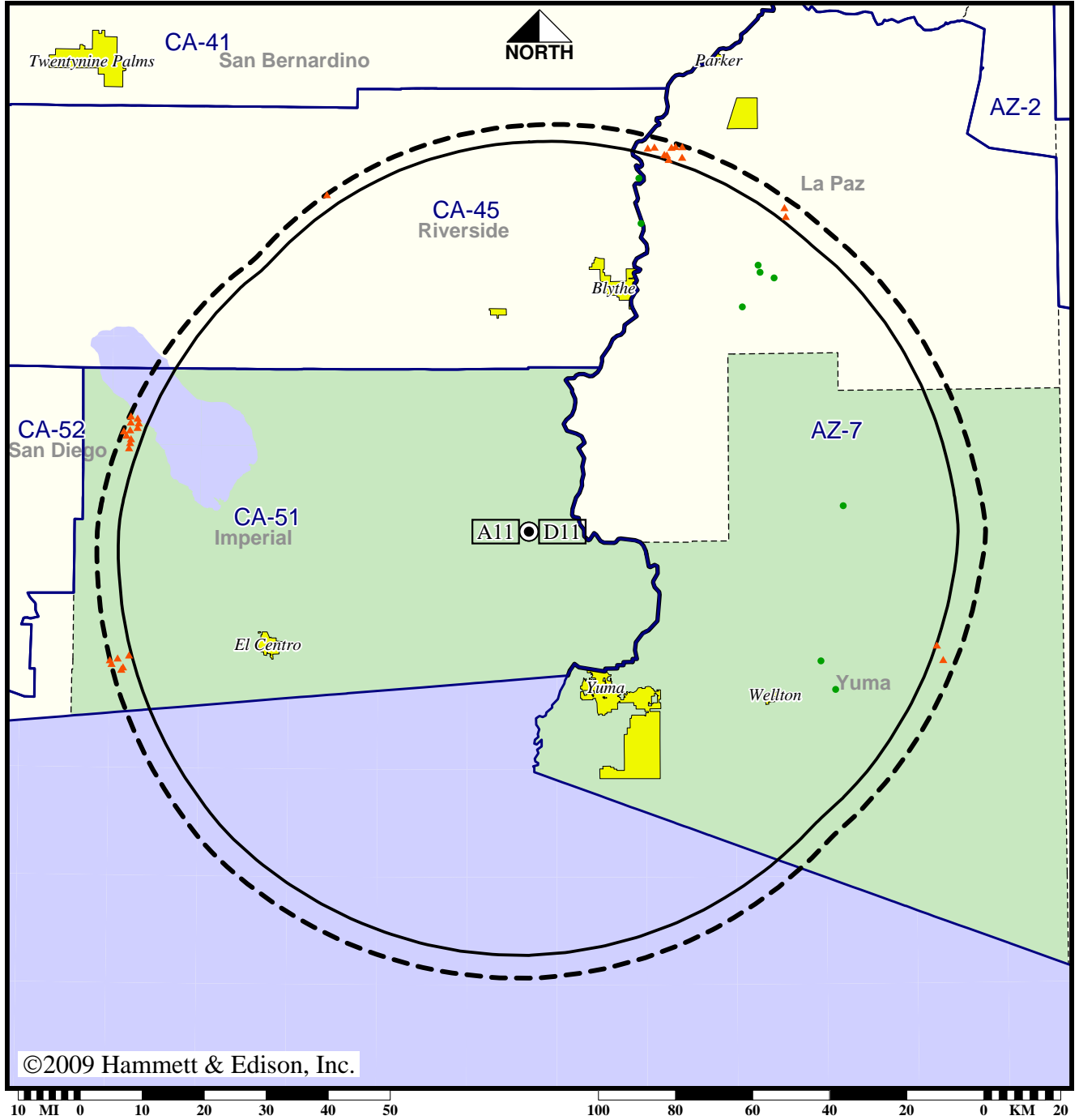
Analog service	322,744 persons
Digital service	325,376
Analog loss	0
Digital gain	2,632
Net gain	2,632

TV Station KYMA • Analog Channel 11, DTV Channel 11 • Yuma, AZ

Expected Operation on June 13: Granted Construction Permit

Digital CP (solid): 10.3 kW ERP at 493 m HAAT, Network: NBC
 vs. Analog (dashed): 316 kW ERP at 493 m HAAT, Network: NBC

Market: Yuma, AZ-El Centro, CA



©2009 Hammett & Edison, Inc.

10 MI 0 10 20 30 40 50 100 80 60 40 20 0 KM 20

- Coverage gained after DTV transition
- No symbol = no change in coverage
- ▲ Coverage lost after DTV transition

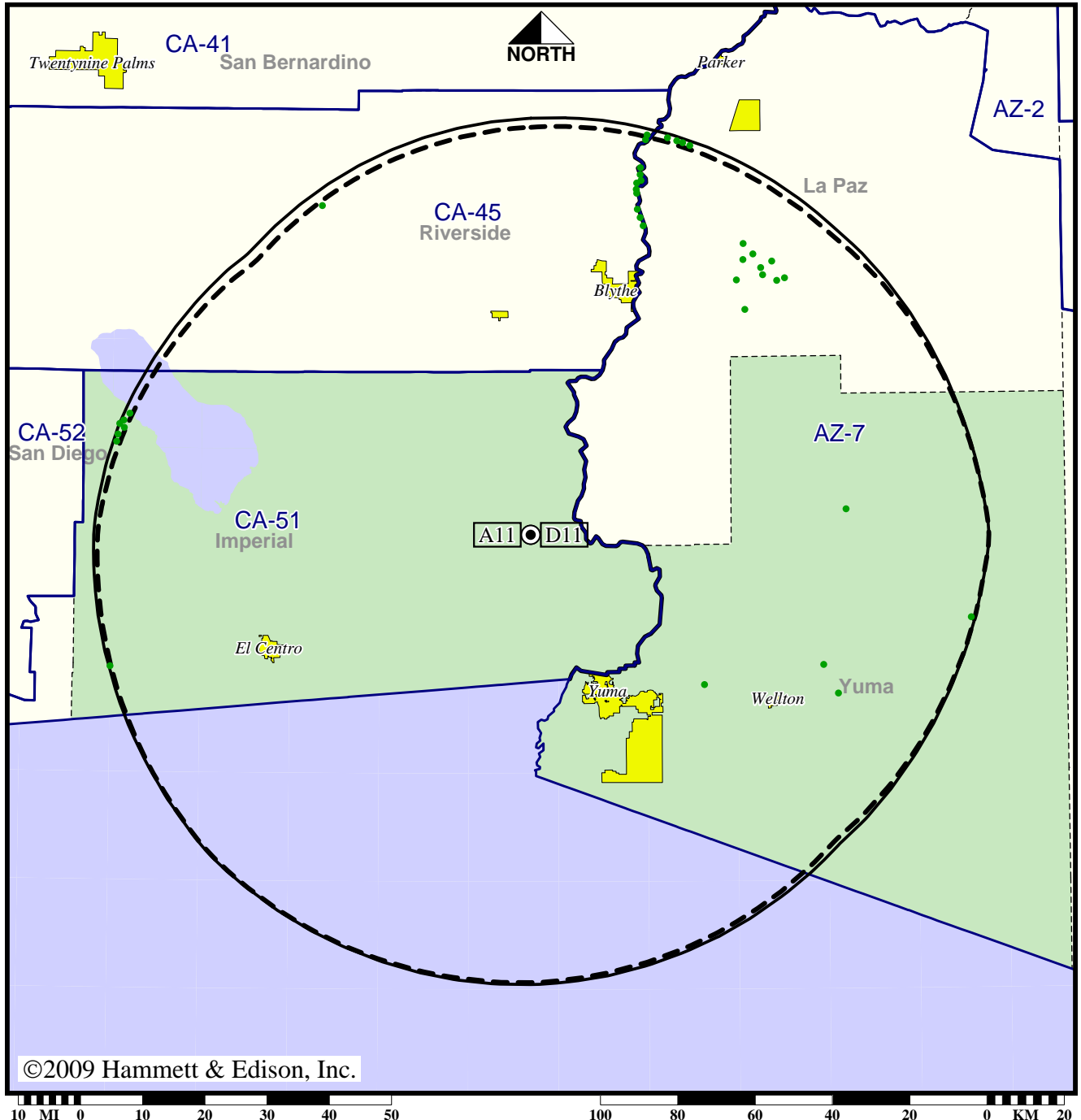
Analog service	325,126 persons
Digital service	324,277
Analog loss	1,021
Digital gain	172
Net gain	-849

TV Station KYMA • Analog Channel 11, DTV Channel 11 • Yuma, AZ

Approved Post-Transition Operation: Granted Construction Permit

Digital CP (solid): 22.3 kW ERP at 493 m HAAT, Network: NBC
 vs. Analog (dashed): 316 kW ERP at 493 m HAAT, Network: NBC

Market: Yuma, AZ-El Centro, CA



©2009 Hammett & Edison, Inc.

● Coverage gained after DTV transition
 No symbol = no change in coverage

Analog service	325,126 persons
Digital service	326,260
Analog loss	0
Digital gain	1,134
Net gain	1,134