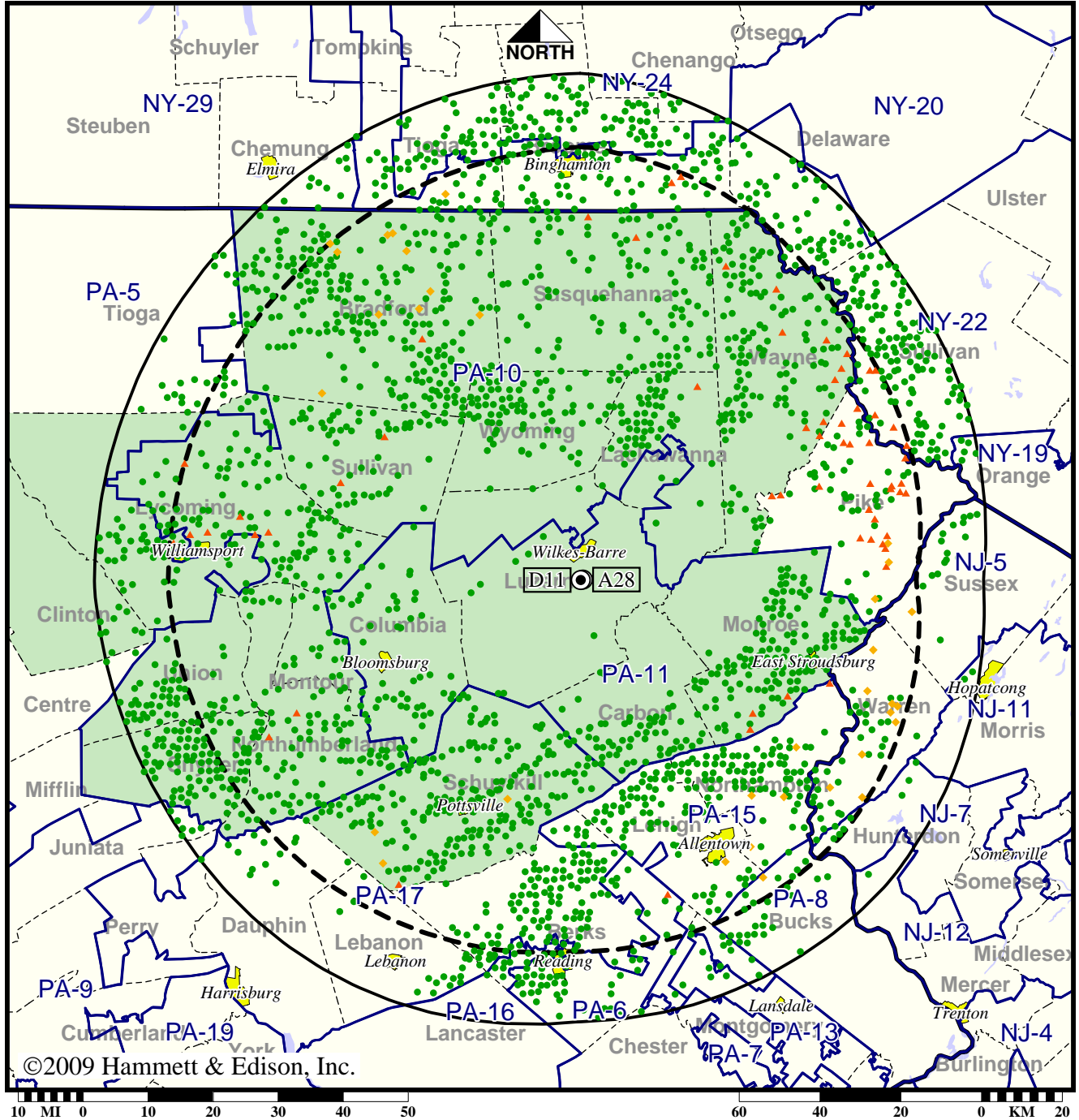


Station WBRE-TV • Analog Channel 28, DTV Channel 11 • Wilkes-Barre, PA

Expected Operation on June 13: Licensed

Digital License (solid): 30.0 kW ERP at 471 m HAAT, Network: NBC
 vs. Analog (dashed): 3020 kW ERP at 509 m HAAT, Network: NBC

Market: Wilkes Barre-Scranton, PA



- Coverage gained after DTV transition
- No symbol = no change in coverage
- ◆ Coverage lost but still served by same network
- ▲ Coverage lost and no other service by same network

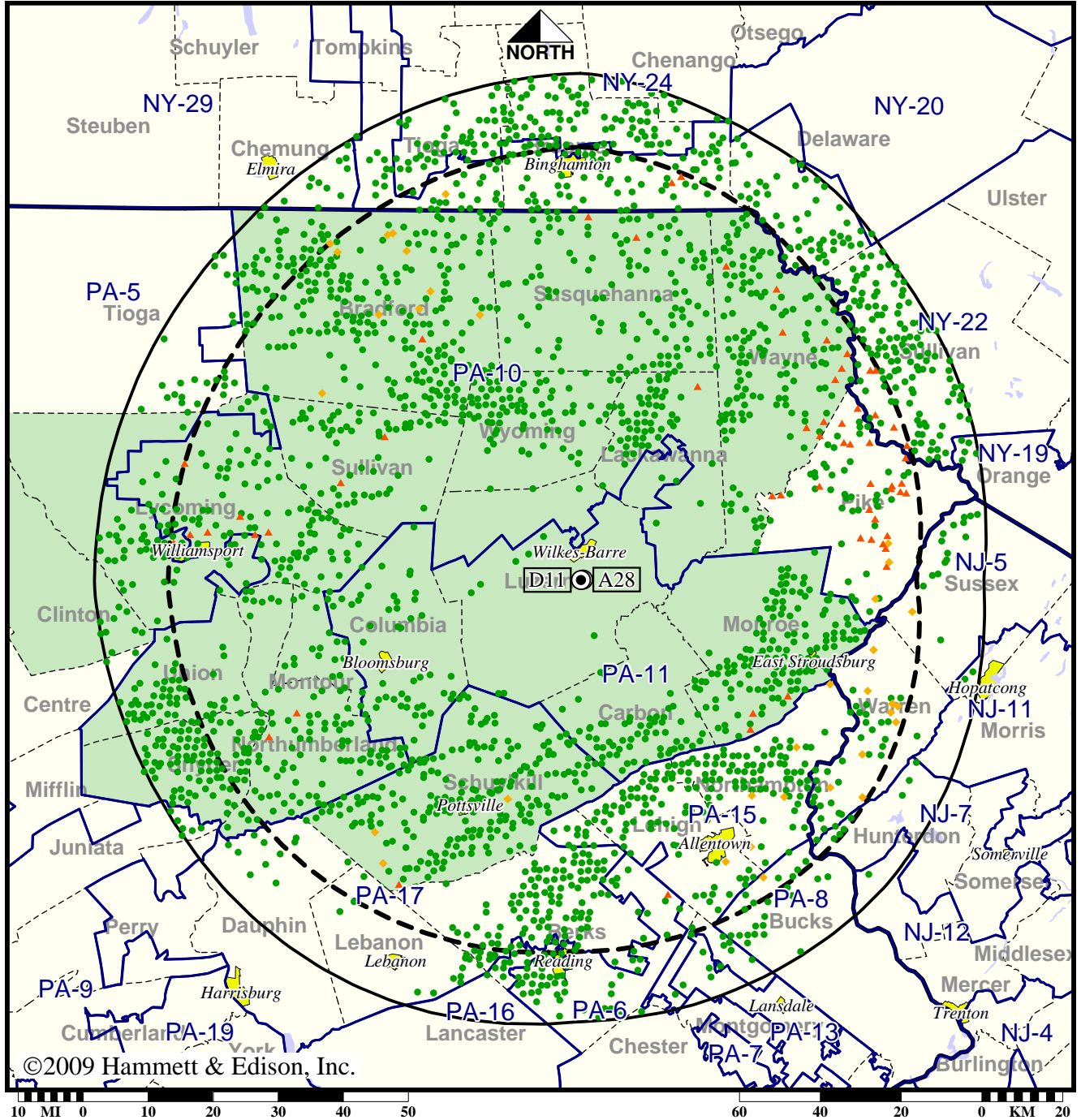
Analog service	1,354,444 persons
Digital service	2,144,625
Analog loss	15,282
Digital gain	805,463
Net gain	790,181

Station WBRE-TV • Analog Channel 28, DTV Channel 11 • Wilkes-Barre, PA

Approved Post-Transition Operation: Licensed

Digital License (solid): 30.0 kW ERP at 471 m HAAT, Network: NBC
 vs. Analog (dashed): 3020 kW ERP at 509 m HAAT, Network: NBC

Market: Wilkes Barre-Scranton, PA



- Coverage gained after DTV transition
- No symbol = no change in coverage
- ◆ Coverage lost but still served by same network
- ▲ Coverage lost and no other service by same network

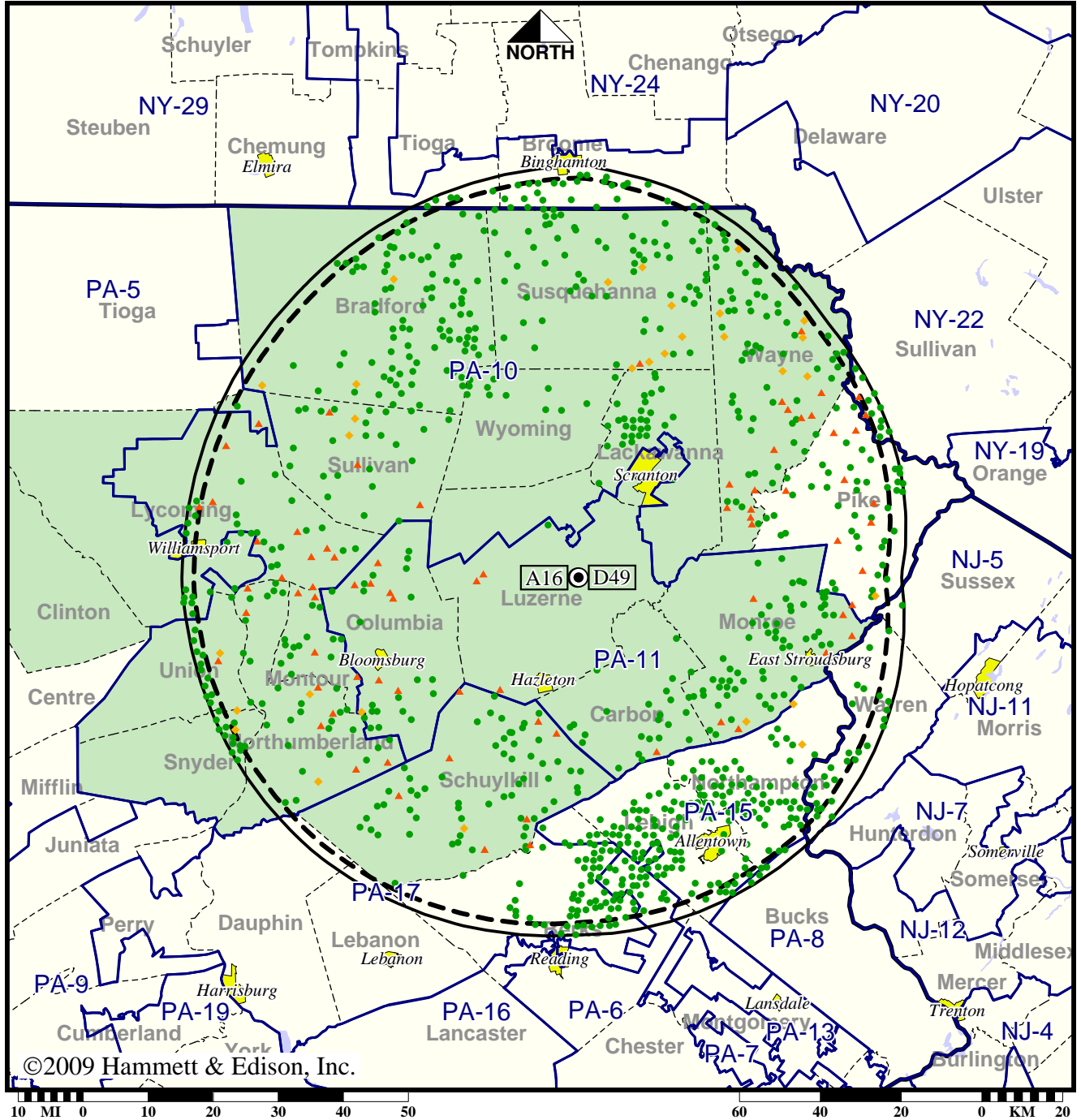
Analog service	1,354,444 persons
Digital service	2,139,777
Analog loss	15,282
Digital gain	800,615
Net gain	785,333

Station WNEP-TV • Analog Channel 16, DTV Channel 49 • Scranton, PA

Expected Operation on June 13: Licensed

Digital License (solid): 100 kW ERP at 506 m HAAT, Network: ABC
 vs. Analog (dashed): 1150 kW ERP at 506 m HAAT, Network: ABC

Market: Wilkes Barre-Scranton, PA



- Coverage gained after DTV transition
- No symbol = no change in coverage
- ◆ Coverage lost but still served by same network
- ▲ Coverage lost and no other service by same network

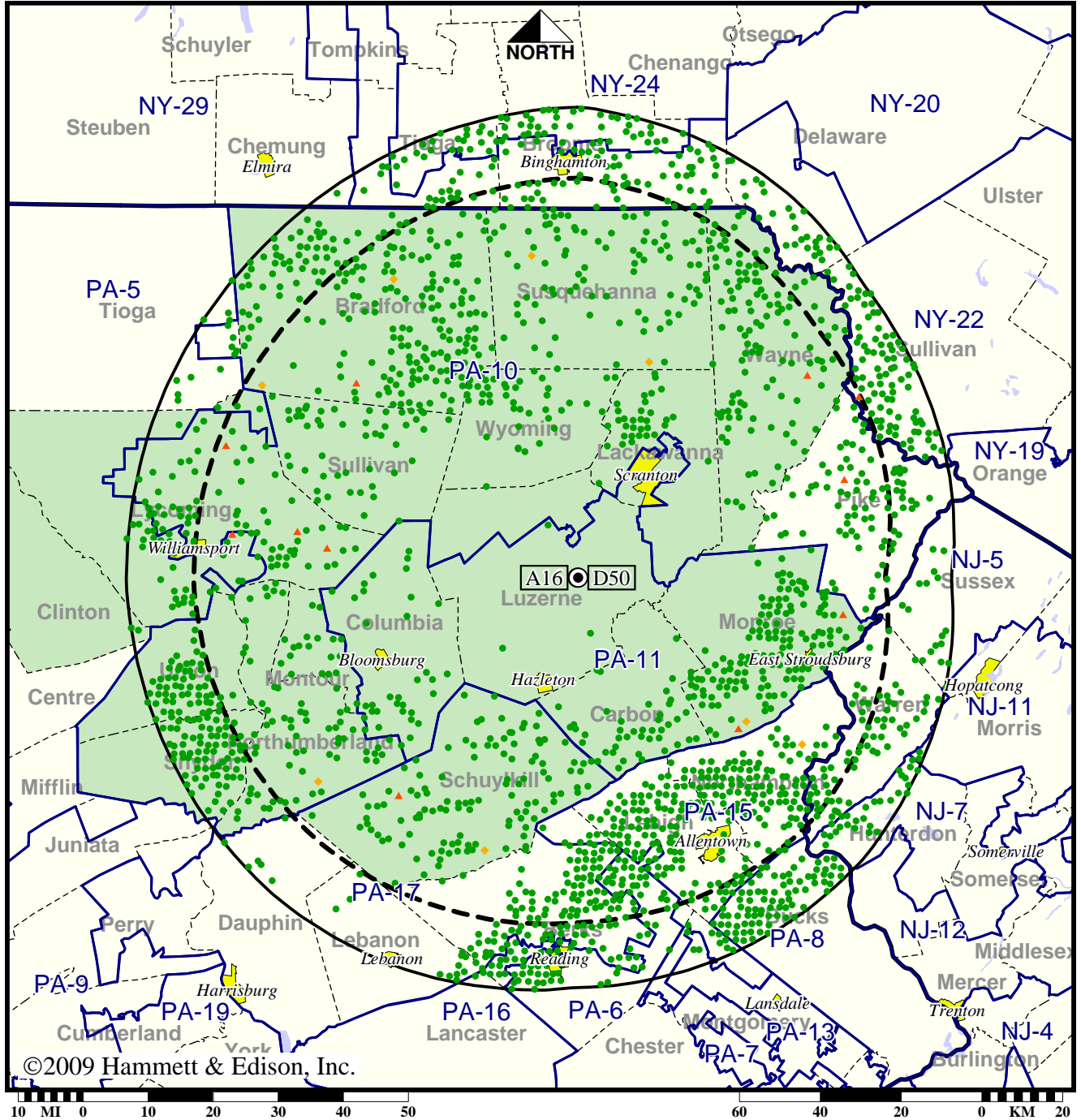
Analog service	1,149,674 persons
Digital service	1,490,635
Analog loss	18,191
Digital gain	359,152
Net gain	340,961

Station WNEP-TV • Analog Channel 16, DTV Channel 50 • Scranton, PA

Approved Post-Transition Operation: Granted Construction Permit

Digital CP (solid): 500 kW ERP at 517 m HAAT, Network: ABC
 vs. Analog (dashed): 1150 kW ERP at 506 m HAAT, Network: ABC

Market: Wilkes Barre-Scranton, PA



- Coverage gained after DTV transition
- No symbol = no change in coverage
- ◆ Coverage lost but still served by same network
- ▲ Coverage lost and no other service by same network

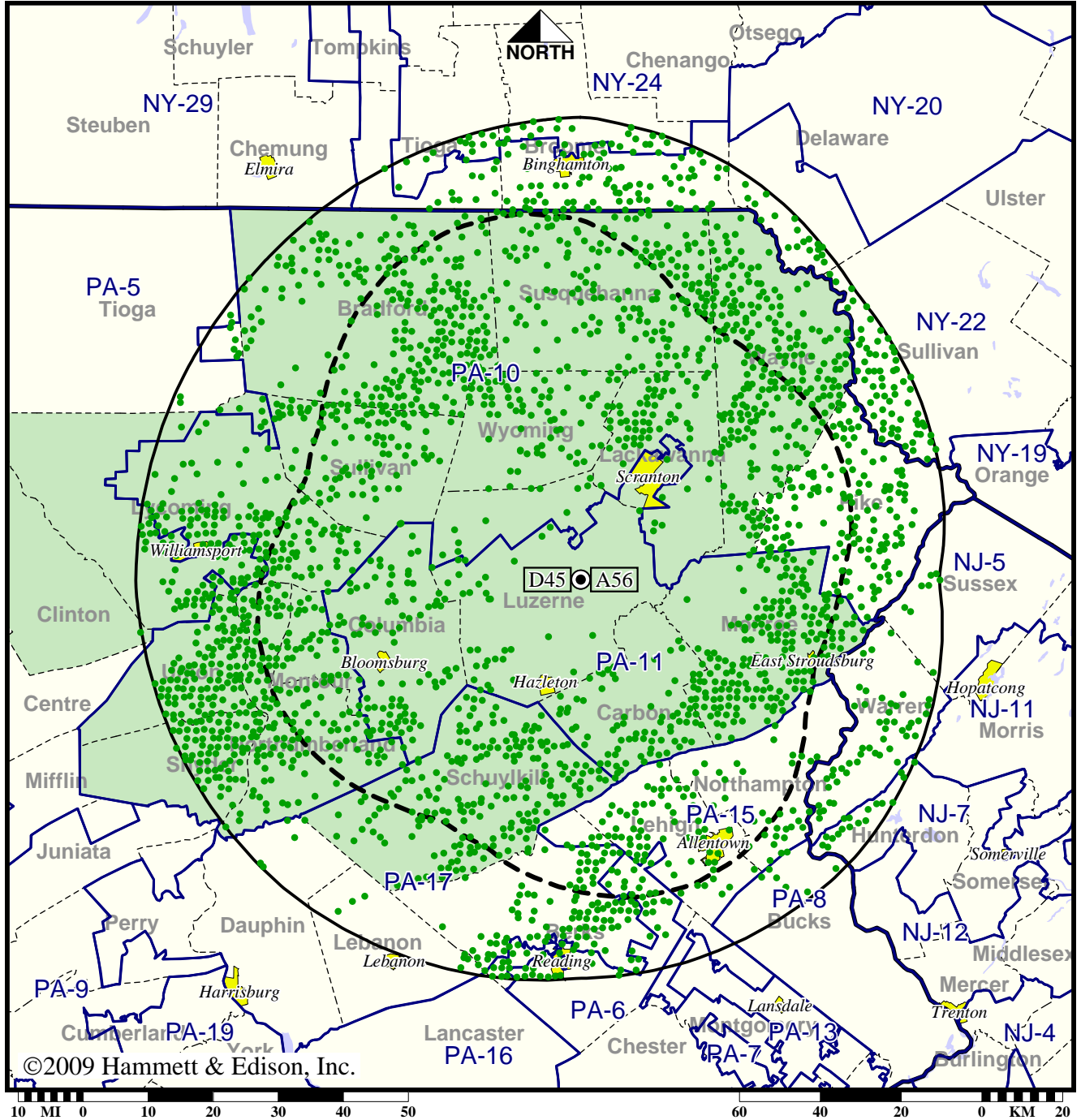
Analog service	1,149,674 persons
Digital service	2,015,260
Analog loss	2,842
Digital gain	868,428
Net gain	865,586

Station WOLF-TV • Analog Channel 56, DTV Channel 45 • Hazleton, PA

Expected Operation on June 13: Licensed

Digital License (solid): 420 kW ERP at 488 m HAAT, Network: Fox
 vs. Analog (dashed): 1580 kW ERP at 503 m HAAT, Network: Fox

Market: Wilkes Barre-Scranton, PA



● Coverage gained after DTV transition
 No symbol = no change in coverage

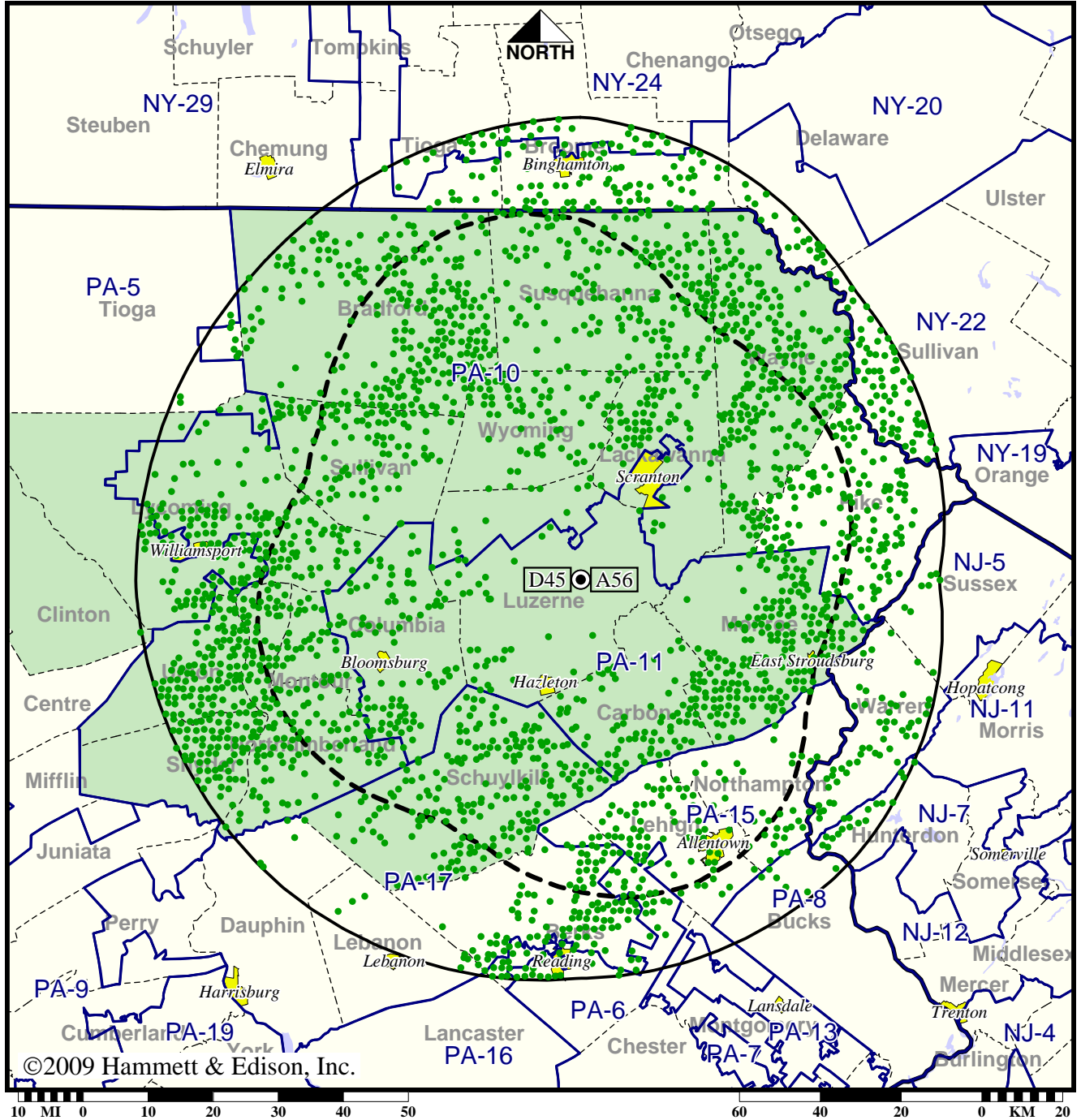
Analog service	684,358 persons
Digital service	1,467,486
Analog loss	0
Digital gain	783,128
Net gain	783,128

Station WOLF-TV • Analog Channel 56, DTV Channel 45 • Hazleton, PA

Approved Post-Transition Operation: Licensed

Digital License (solid): 420 kW ERP at 488 m HAAT, Network: Fox
 vs. Analog (dashed): 1580 kW ERP at 503 m HAAT, Network: Fox

Market: Wilkes Barre-Scranton, PA



- Coverage gained after DTV transition
- No symbol = no change in coverage

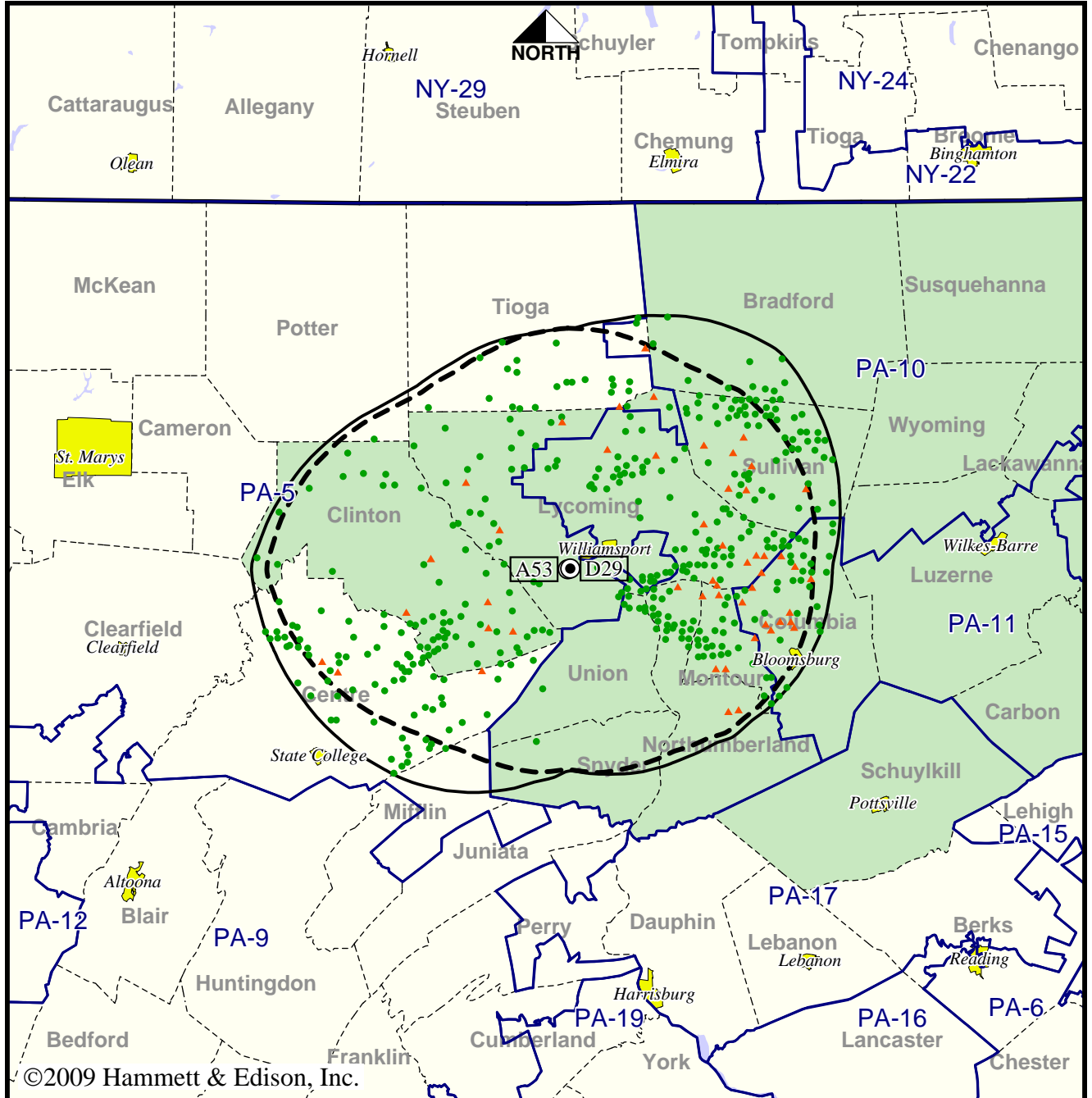
Analog service	684,358 persons
Digital service	1,467,486
Analog loss	0
Digital gain	783,128
Net gain	783,128

TV Station WQMY • Analog Channel 53, DTV Channel 29 • Williamsport, PA

Expected Operation on June 13: Granted Construction Permit

Digital CP (solid): 50.0 kW ERP at 243 m HAAT
 vs. Analog (dashed): 1320 kW ERP at 244 m HAAT

Market: Wilkes Barre-Scranton, PA



©2009 Hammett & Edison, Inc.



- Coverage gained after DTV transition
- No symbol = no change in coverage
- ▲ Coverage lost after DTV transition

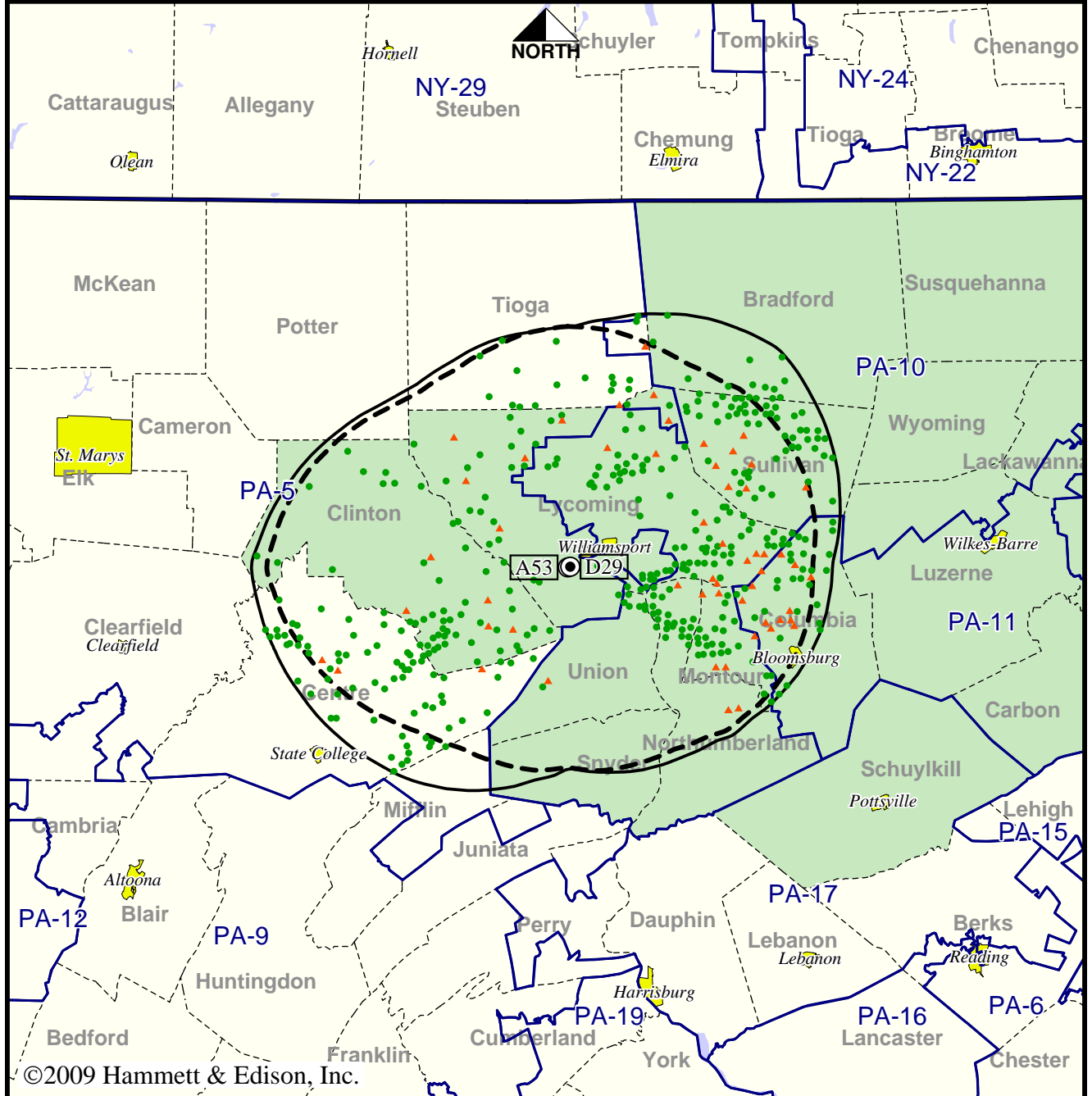
Analog service	132,255 persons
Digital service	179,433
Analog loss	3,465
Digital gain	50,643
Net gain	47,178

TV Station WQMY • Analog Channel 53, DTV Channel 29 • Williamsport, PA

Approved Post-Transition Operation: Granted Construction Permit

Digital CP (solid): 50.0 kW ERP at 243 m HAAT
 vs. Analog (dashed): 1320 kW ERP at 244 m HAAT

Market: Wilkes Barre-Scranton, PA



- Coverage gained after DTV transition
- No symbol = no change in coverage
- ▲ Coverage lost after DTV transition

Analog service	132,255 persons
Digital service	178,812
Analog loss	3,492
Digital gain	50,049
Net gain	46,557



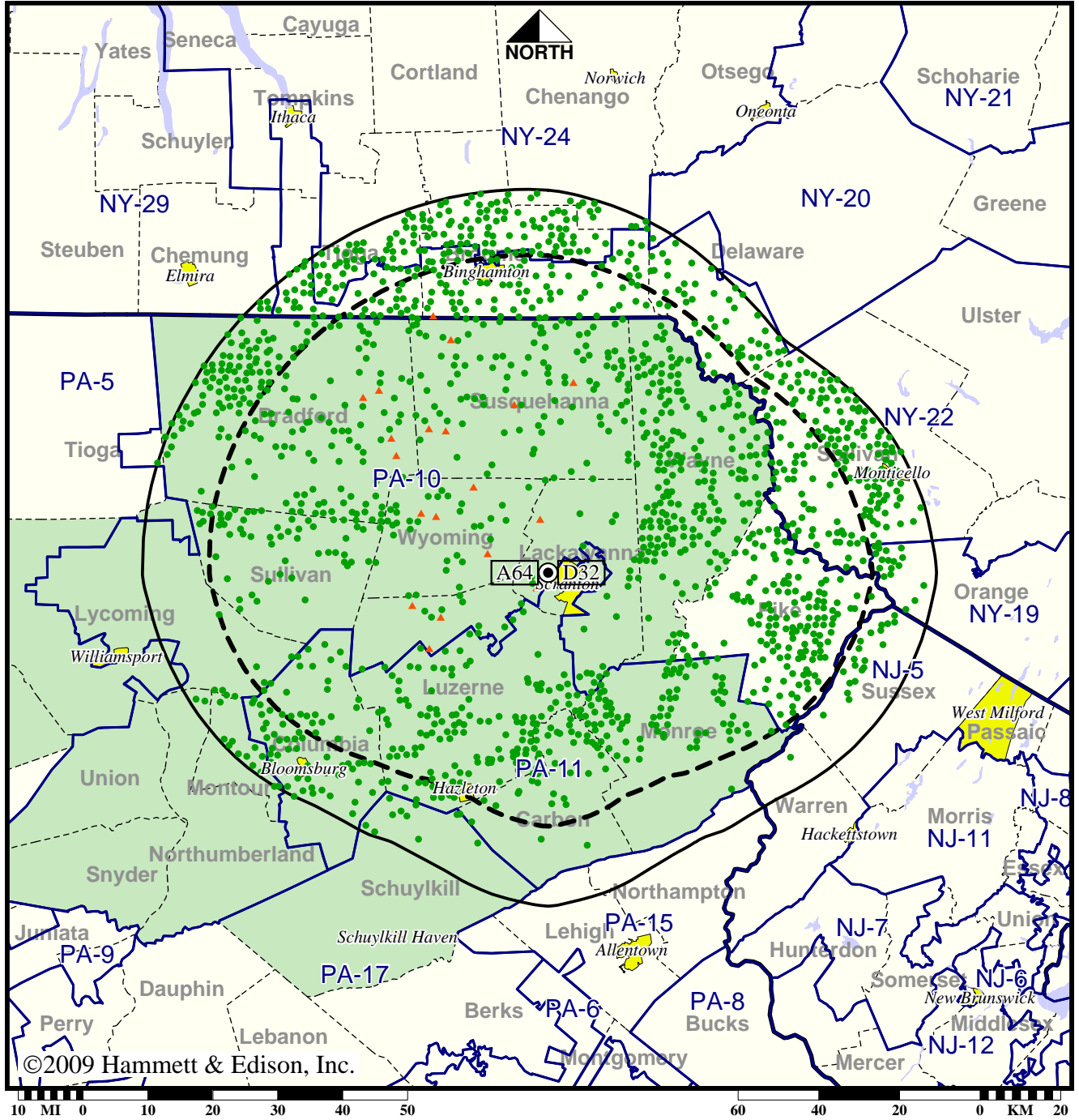
©2009 Hammett & Edison, Inc.

TV Station WQPX • Analog Channel 64, DTV Channel 32 • Scranton, PA

Expected Operation on June 13: Licensed

Digital License (solid): 528 kW ERP at 354 m HAAT
 vs. Analog (dashed): 3090 kW ERP at 372 m HAAT

Market: Wilkes Barre-Scranton, PA



©2009 Hammett & Edison, Inc.

- Coverage gained after DTV transition
- No symbol = no change in coverage
- ▲ Coverage lost after DTV transition

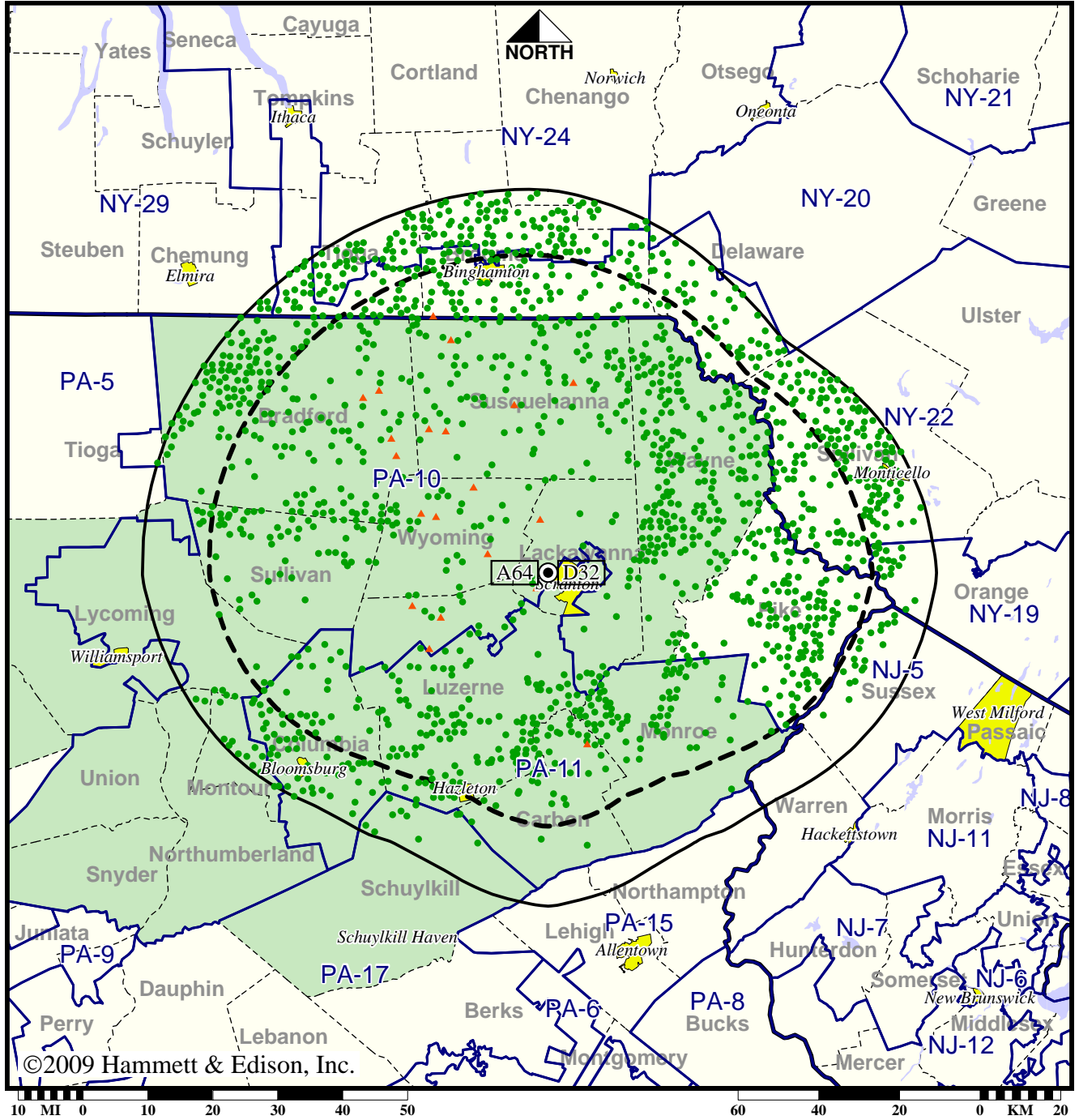
Analog service	536,657 persons
Digital service	827,223
Analog loss	1,907
Digital gain	292,473
Net gain	290,566

TV Station WQPX • Analog Channel 64, DTV Channel 32 • Scranton, PA

Approved Post-Transition Operation: Licensed

Digital License (solid): 528 kW ERP at 354 m HAAT
 vs. Analog (dashed): 3090 kW ERP at 372 m HAAT

Market: Wilkes Barre-Scranton, PA



- Coverage gained after DTV transition
- No symbol = no change in coverage
- ▲ Coverage lost after DTV transition

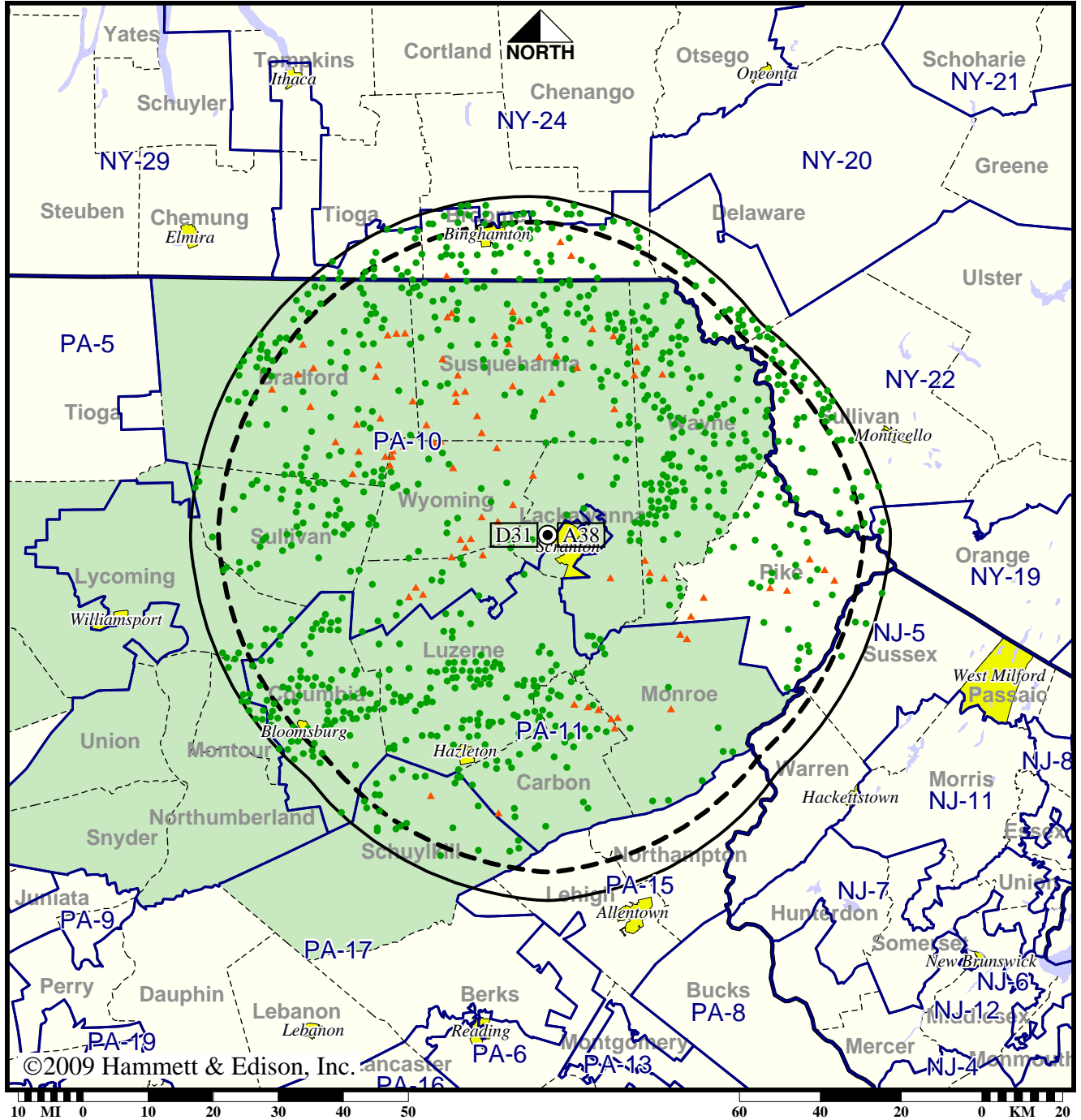
Analog service	536,657 persons
Digital service	813,177
Analog loss	1,913
Digital gain	278,433
Net gain	276,520

TV Station WSWB • Analog Channel 38, DTV Channel 31 • Scranton, PA

Expected Operation on June 13: Licensed

Digital License (solid): 100 kW ERP at 352 m HAAT
 vs. Analog (dashed): 1290 kW ERP at 385 m HAAT

Market: Wilkes Barre-Scranton, PA



©2009 Hammett & Edison, Inc.

- Coverage gained after DTV transition
- No symbol = no change in coverage
- ▲ Coverage lost after DTV transition

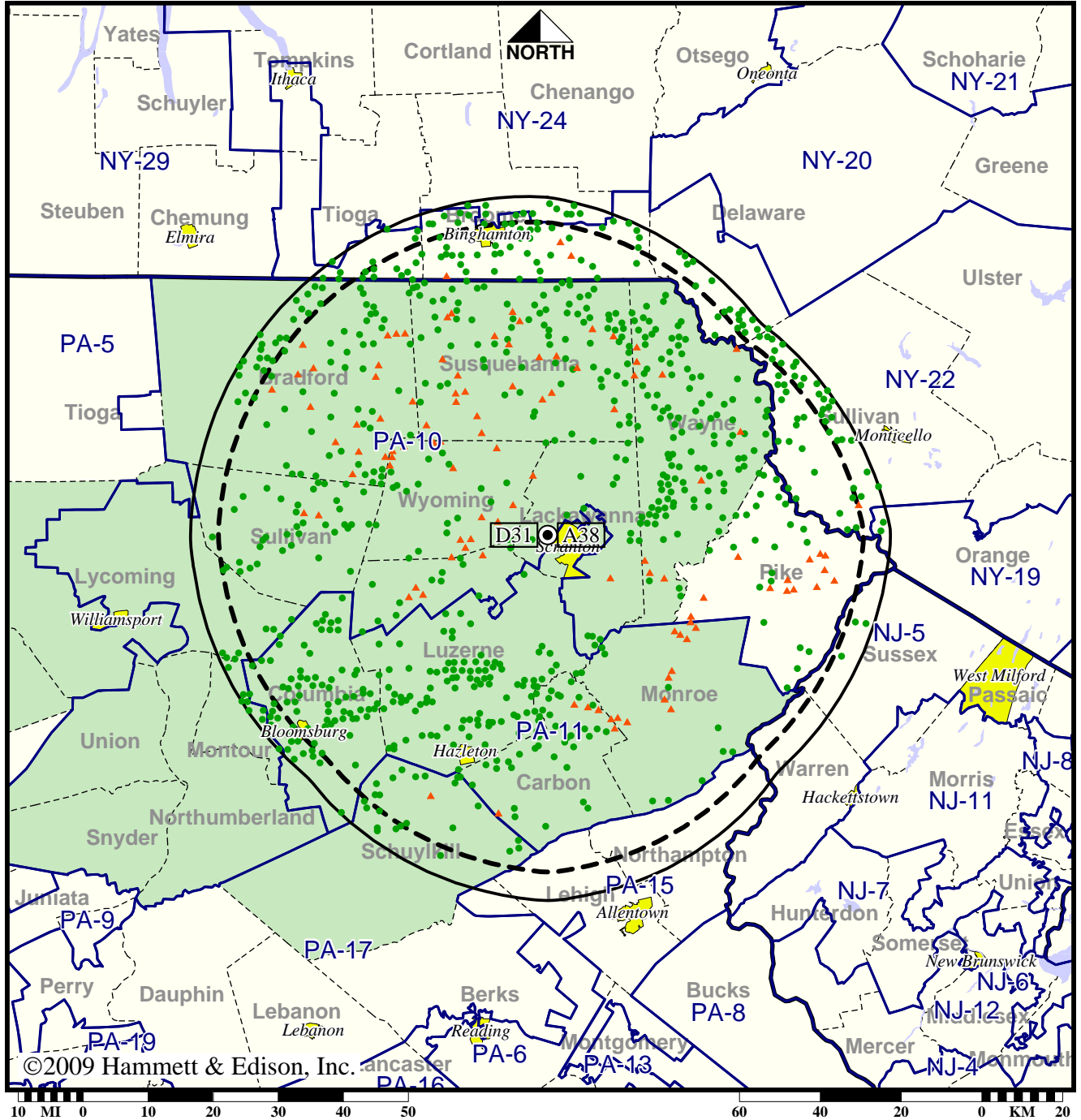
Analog service	597,346 persons
Digital service	756,062
Analog loss	9,333
Digital gain	168,049
Net gain	158,716

TV Station WSWB • Analog Channel 38, DTV Channel 31 • Scranton, PA

Approved Post-Transition Operation: Licensed

Digital License (solid): 100 kW ERP at 352 m HAAT
 vs. Analog (dashed): 1290 kW ERP at 385 m HAAT

Market: Wilkes Barre-Scranton, PA



- Coverage gained after DTV transition
- No symbol = no change in coverage
- ▲ Coverage lost after DTV transition

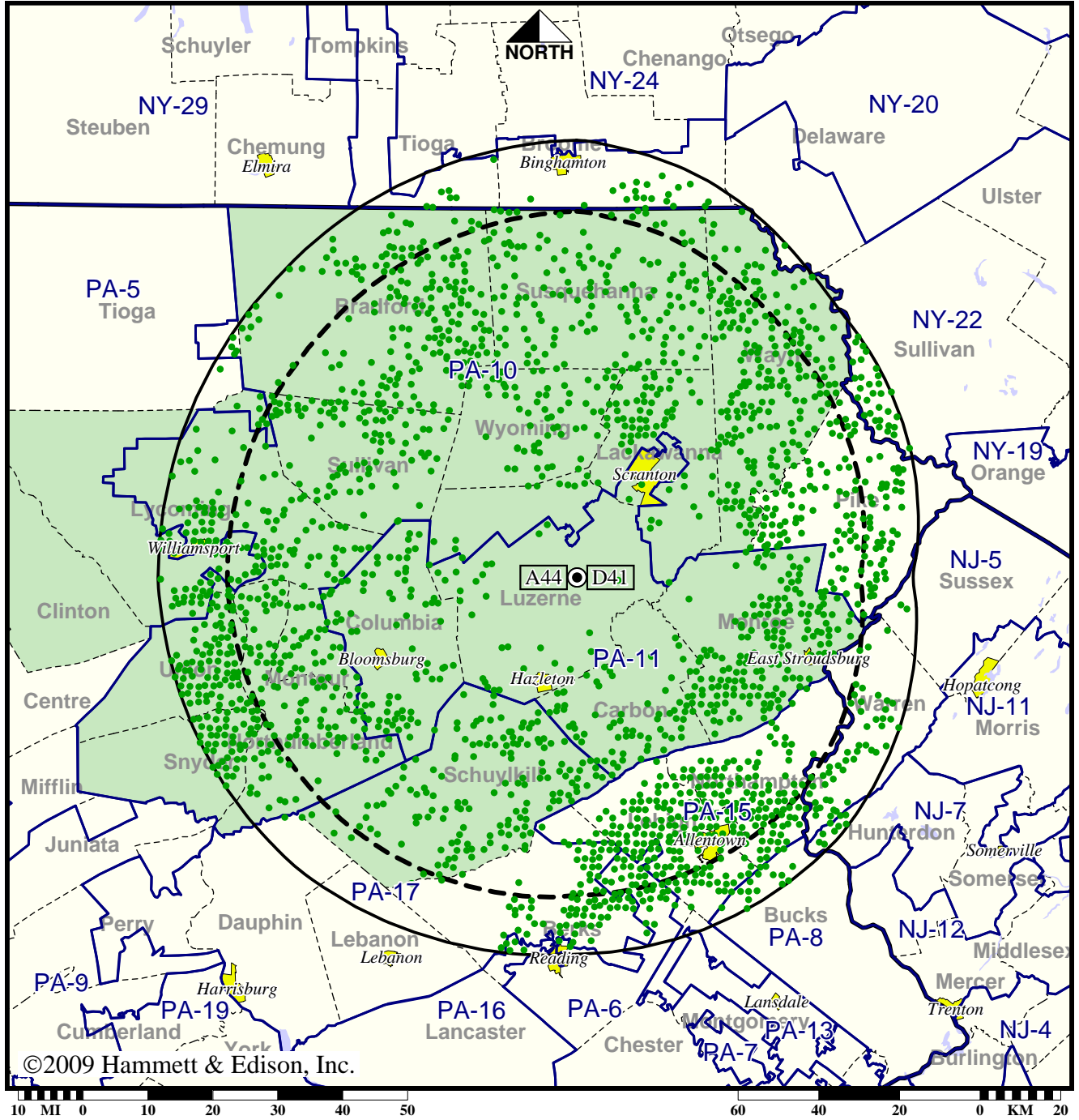
Analog service	597,346 persons
Digital service	732,628
Analog loss	14,002
Digital gain	149,284
Net gain	135,282

Station WVIA-TV • Analog Channel 44, DTV Channel 41 • Scranton, PA

Expected Operation on June 13: Licensed

Digital License (solid): 200 kW ERP at 487 m HAAT, Network: PBS
 vs. Analog (dashed): 1000 kW ERP at 509 m HAAT, Network: PBS

Market: Wilkes Barre-Scranton, PA



©2009 Hammett & Edison, Inc.

- Coverage gained after DTV transition
- No symbol = no change in coverage

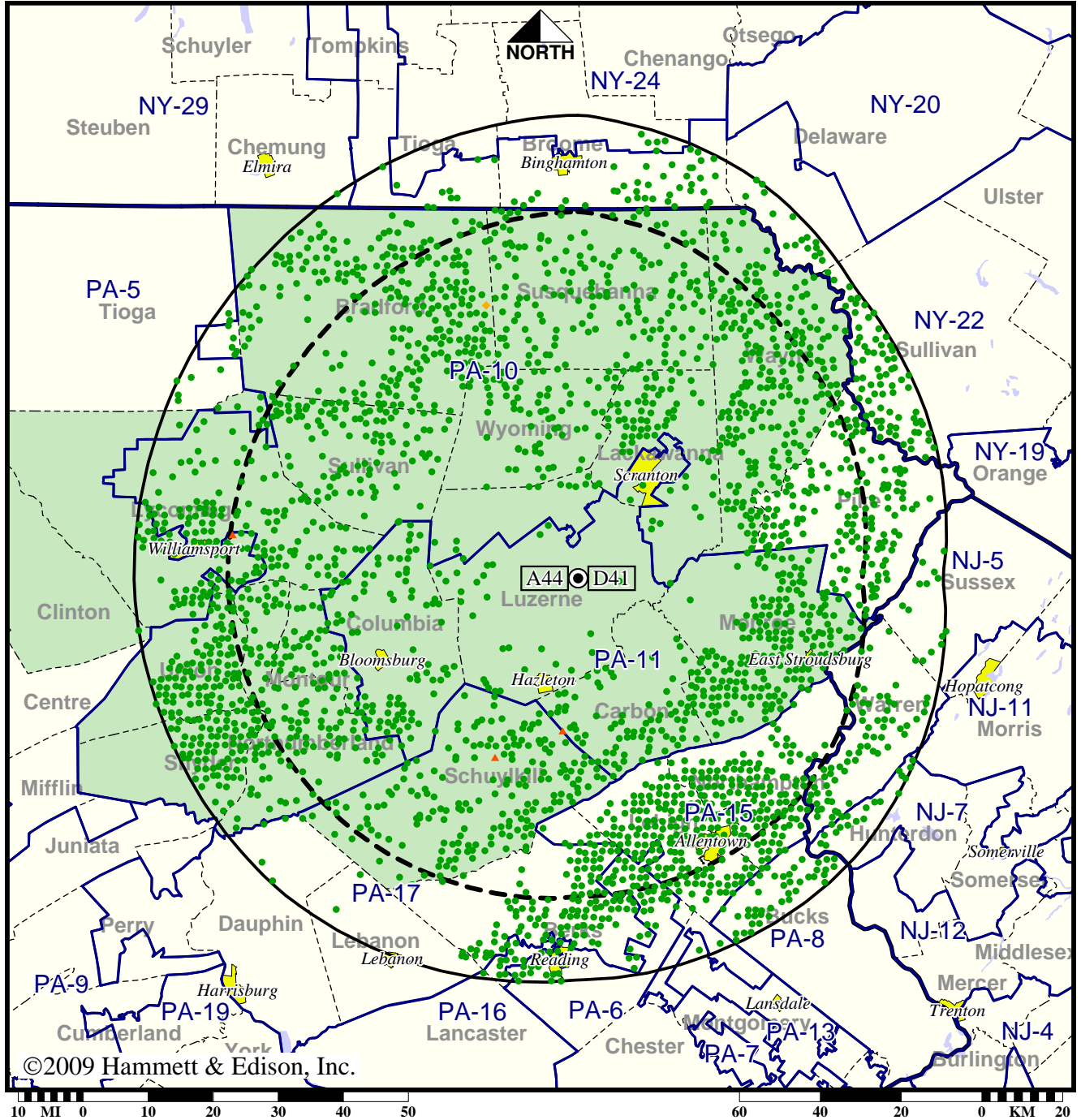
Analog service	718,085 persons
Digital service	1,641,850
Analog loss	0
Digital gain	923,765
Net gain	923,765

Station WVIA-TV • Analog Channel 44, DTV Channel 41 • Scranton, PA

Approved Post-Transition Operation: Granted Construction Permit

Digital CP (solid): 365 kW ERP at 510 m HAAT, Network: PBS
 vs. Analog (dashed): 1000 kW ERP at 509 m HAAT, Network: PBS

Market: Wilkes Barre-Scranton, PA



©2009 Hammett & Edison, Inc.

- Coverage gained after DTV transition
- No symbol = no change in coverage
- ◆ Coverage lost but still served by same network
- ▲ Coverage lost and no other service by same network

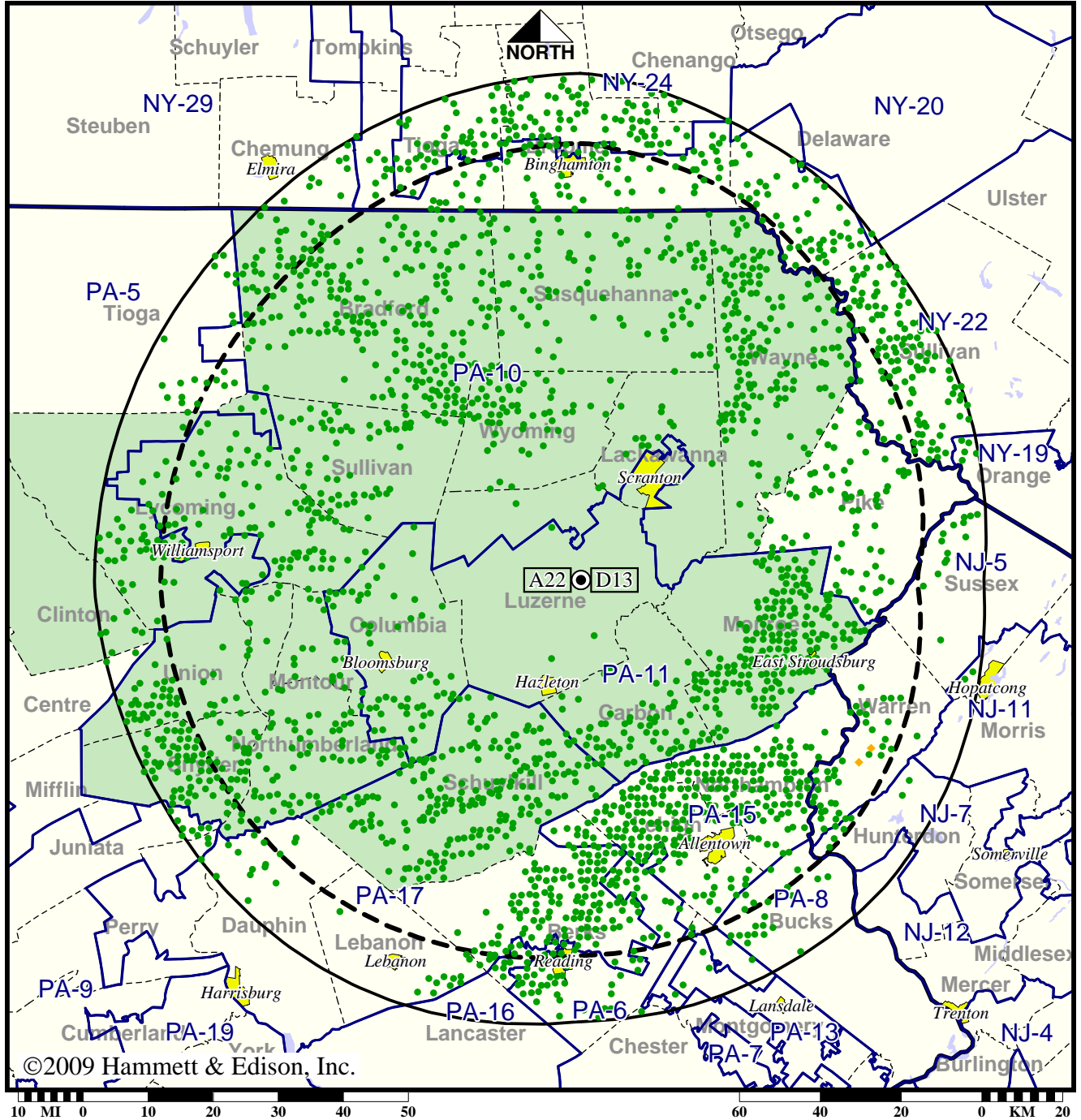
Analog service	718,085 persons
Digital service	1,904,094
Analog loss	667
Digital gain	1,186,676
Net gain	1,186,009

TV Station WYOU • Analog Channel 22, DTV Channel 13 • Scranton, PA

Expected Operation on June 13: Licensed

Digital License (solid): 30.0 kW ERP at 471 m HAAT, Network: CBS
 vs. Analog (dashed): 2950 kW ERP at 505 m HAAT, Network: CBS

Market: Wilkes Barre-Scranton, PA



©2009 Hammett & Edison, Inc.

- Coverage gained after DTV transition
- No symbol = no change in coverage
- ◆ Coverage lost but still served by same network

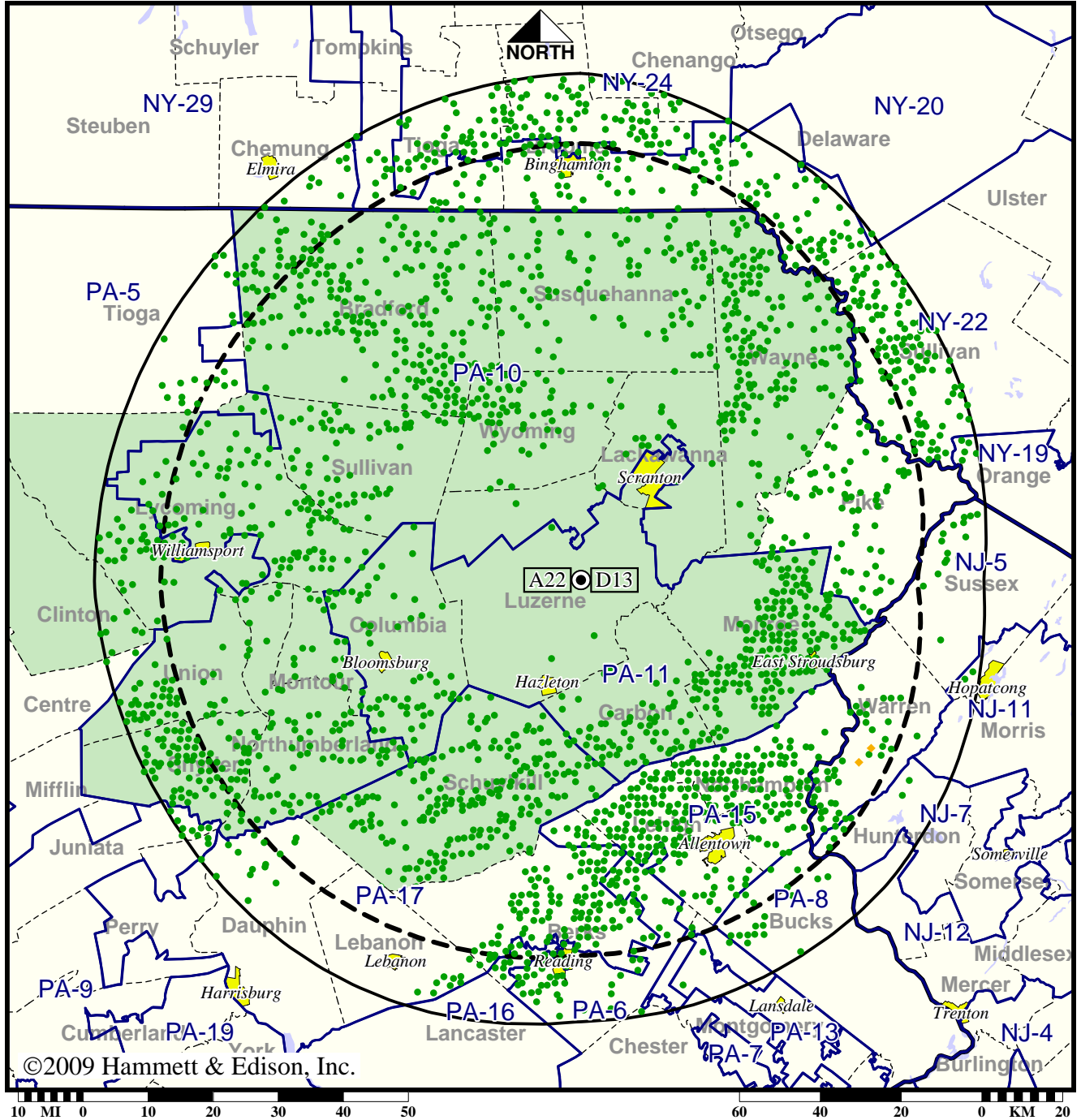
Analog service	1,201,818 persons
Digital service	2,108,990
Analog loss	527
Digital gain	907,699
Net gain	907,172

TV Station WYOU • Analog Channel 22, DTV Channel 13 • Scranton, PA

Approved Post-Transition Operation: Licensed

Digital License (solid): 30.0 kW ERP at 471 m HAAT, Network: CBS
 vs. Analog (dashed): 2950 kW ERP at 505 m HAAT, Network: CBS

Market: Wilkes Barre-Scranton, PA



©2009 Hammett & Edison, Inc.

- Coverage gained after DTV transition
- No symbol = no change in coverage
- ◆ Coverage lost but still served by same network

Analog service	1,201,818 persons
Digital service	2,090,543
Analog loss	527
Digital gain	889,252
Net gain	888,725