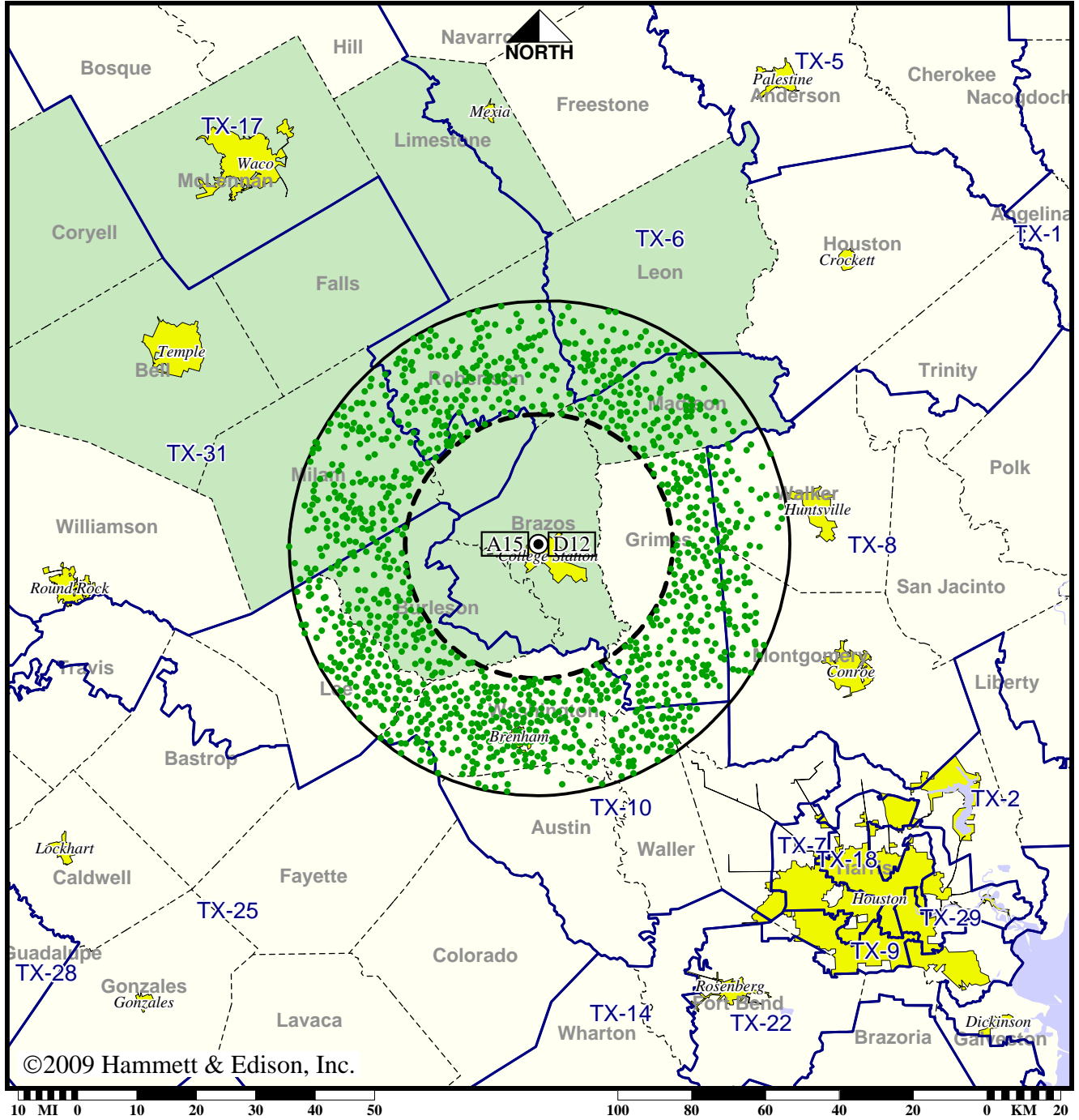


Station KAMU-TV • Analog Channel 15, DTV Channel 12 • College Station, TX

Expected Operation on June 13: Licensed

Digital License (solid): 3.20 kW ERP at 105 m HAAT, Network: PBS  
 vs. Analog (dashed): 22.9 kW ERP at 119 m HAAT, Network: PBS

Market: Waco-Temple-Bryan, TX



©2009 Hammett & Edison, Inc.

● Coverage gained after DTV transition  
 No symbol = no change in coverage

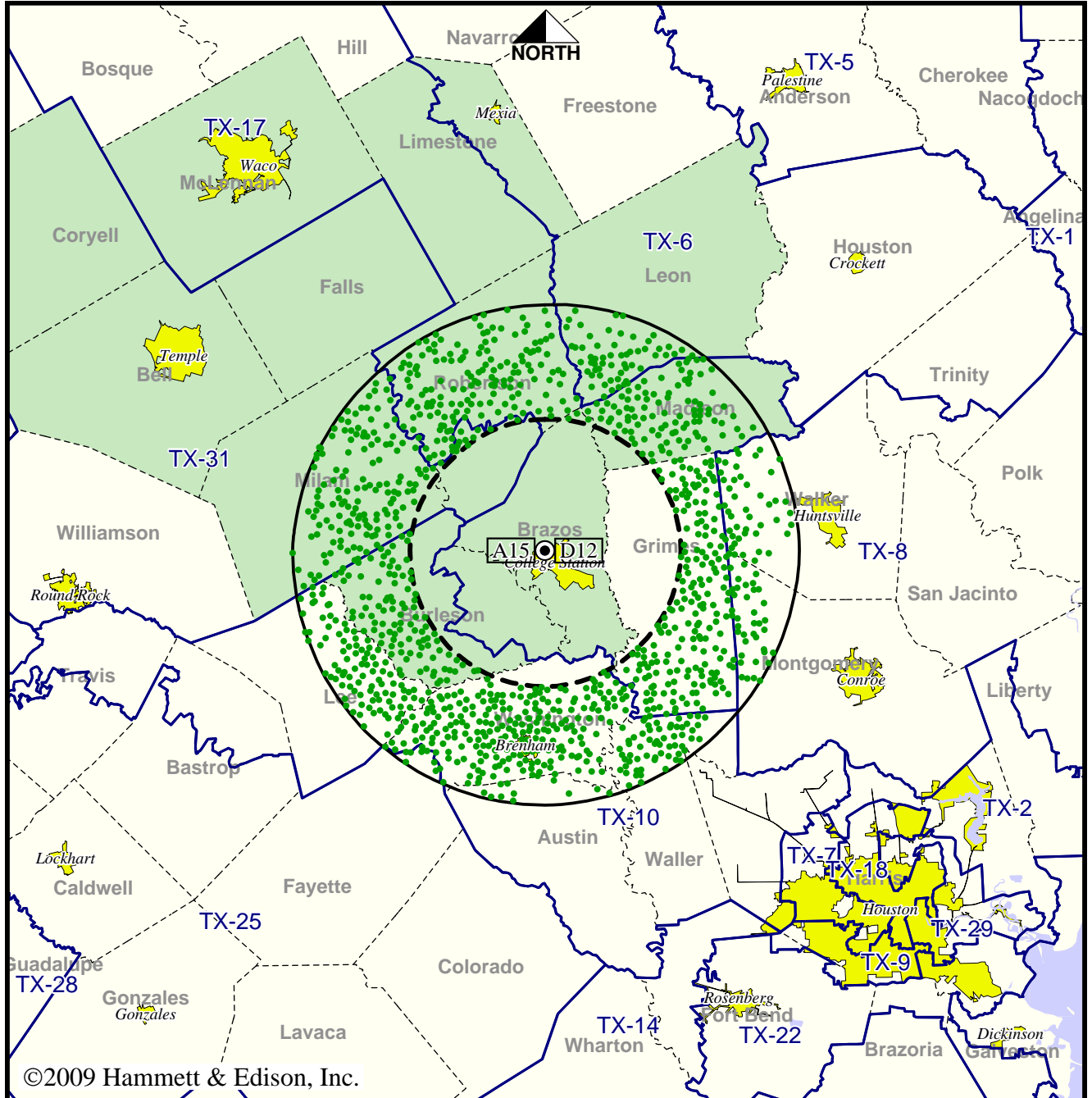
|                 |                 |
|-----------------|-----------------|
| Analog service  | 169,045 persons |
| Digital service | 276,137         |
| Analog loss     | 0               |
| Digital gain    | 107,092         |
| Net gain        | 107,092         |

Station KAMU-TV • Analog Channel 15, DTV Channel 12 • College Station, TX

Approved Post-Transition Operation: Licensed

Digital License (solid): 3.20 kW ERP at 105 m HAAT, Network: PBS  
 vs. Analog (dashed): 22.9 kW ERP at 119 m HAAT, Network: PBS

Market: Waco-Temple-Bryan, TX



©2009 Hammett & Edison, Inc.

10 MI 0 10 20 30 40 50 100 80 60 40 20 0 KM 20

- Coverage gained after DTV transition
- No symbol = no change in coverage

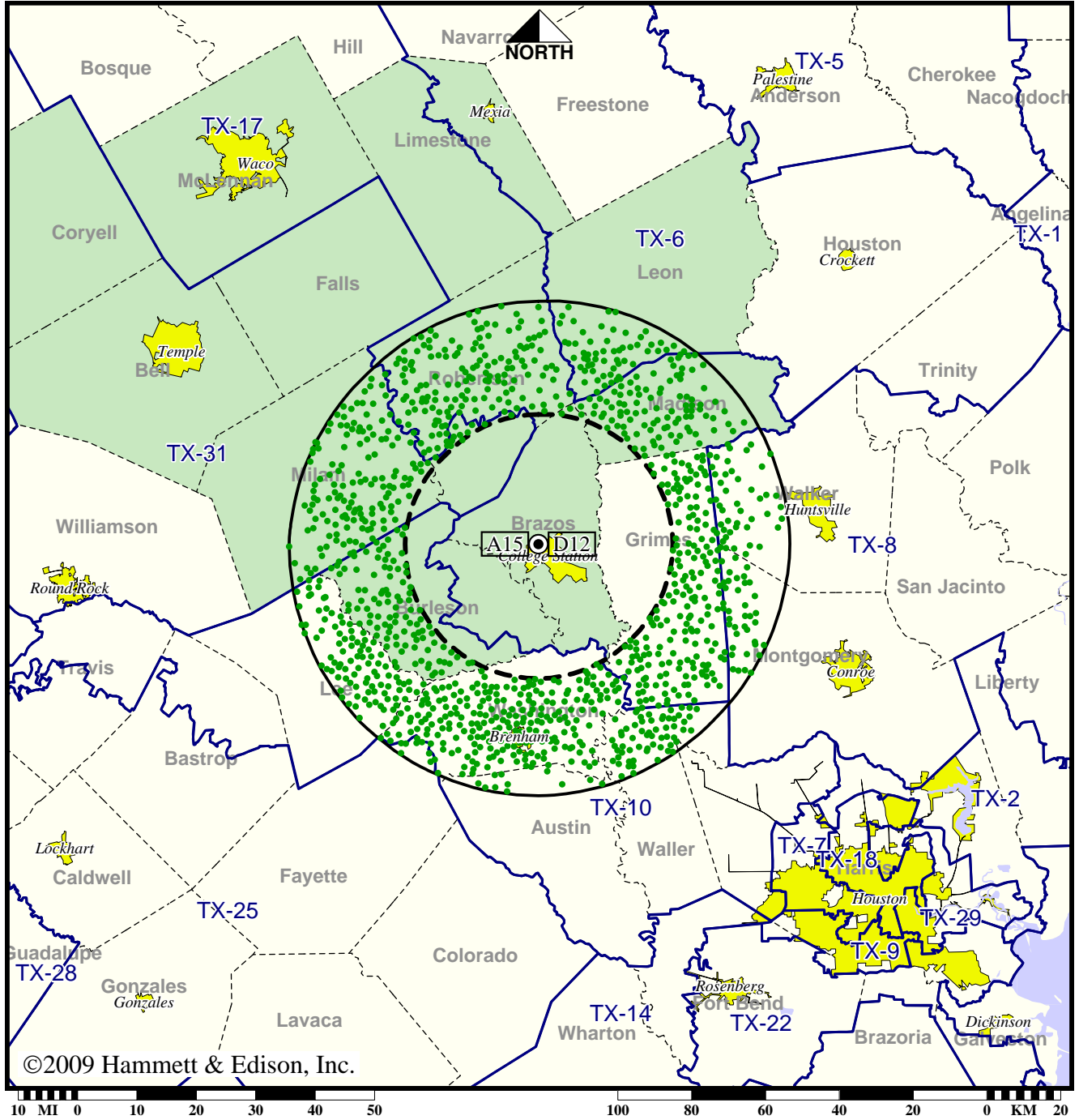
|                 |                 |
|-----------------|-----------------|
| Analog service  | 169,045 persons |
| Digital service | 276,019         |
| Analog loss     | 0               |
| Digital gain    | 106,974         |
| Net gain        | 106,974         |

**Station KAMU-TV • Analog Channel 15, DTV Channel 12 • College Station, TX**

**Approved or Requested Post-Transition Operation: Licensed**

**Digital License (solid): 3.20 kW ERP at 105 m HAAT, Network: PBS  
vs. Analog (dashed): 22.9 kW ERP at 119 m HAAT, Network: PBS**

**Market: Waco-Temple-Bryan, TX**



©2009 Hammett & Edison, Inc.

● Coverage gained after DTV transition  
No symbol = no change in coverage

|                 |                 |
|-----------------|-----------------|
| Analog service  | 169,045 persons |
| Digital service | 276,036         |
| Analog loss     | 0               |
| Digital gain    | 106,991         |
| Net gain        | 106,991         |

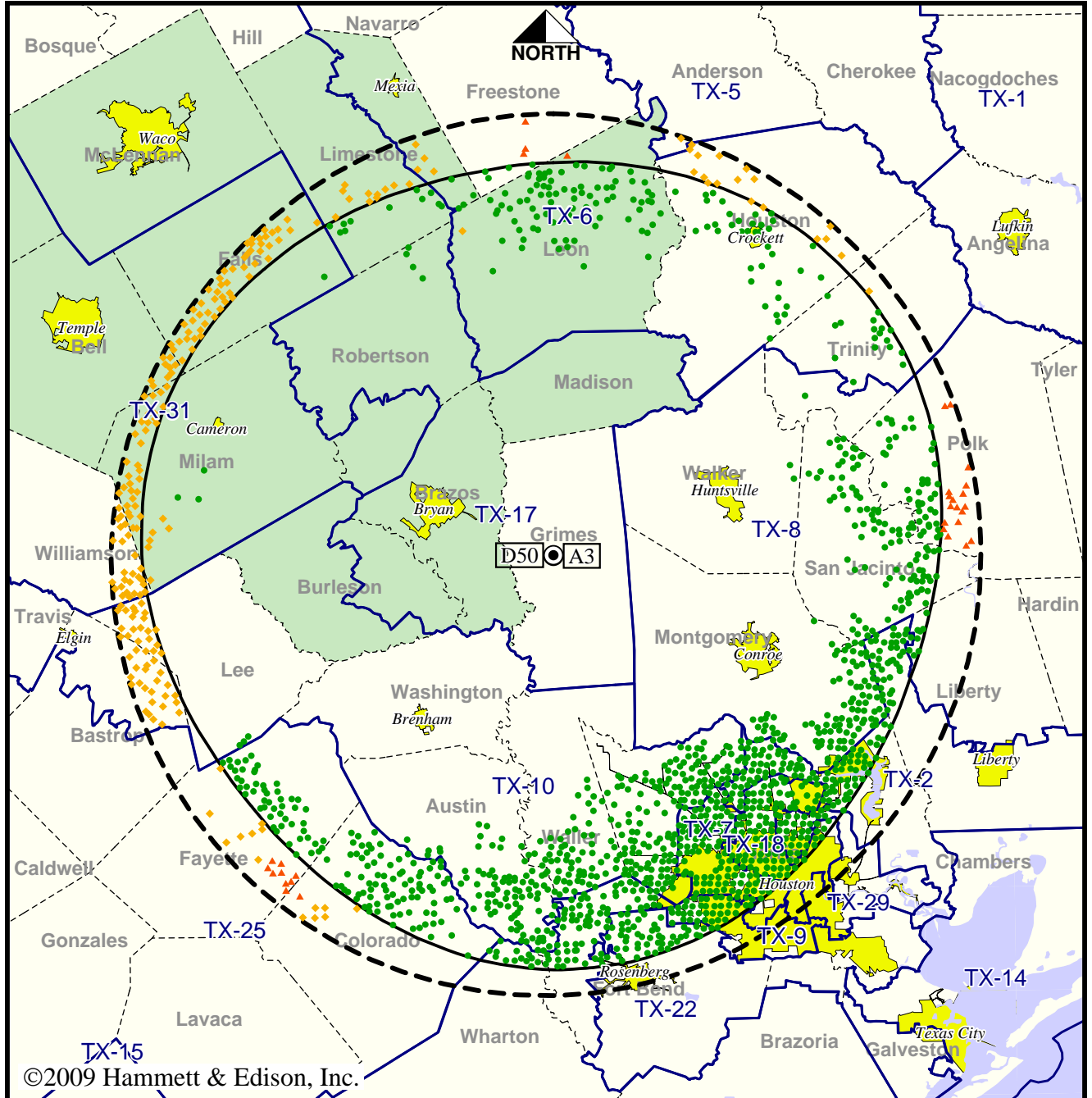
BLEDT-20030319AFB  
KAMU-TV Digital License

Station KBTX-TV • Analog Channel 3, DTV Channel 50 • Bryan, TX

Expected Operation on June 13: Granted Construction Permit

Digital CP (solid): 790 kW ERP at 507 m HAAT, Network: CBS  
 vs. Analog (dashed): 69.2 kW ERP at 515 m HAAT, Network: CBS

Market: Waco-Temple-Bryan, TX



©2009 Hammett & Edison, Inc.

- Coverage gained after DTV transition
- No symbol = no change in coverage
- ◆ Coverage lost but still served by same network
- ▲ Coverage lost and no other service by same network

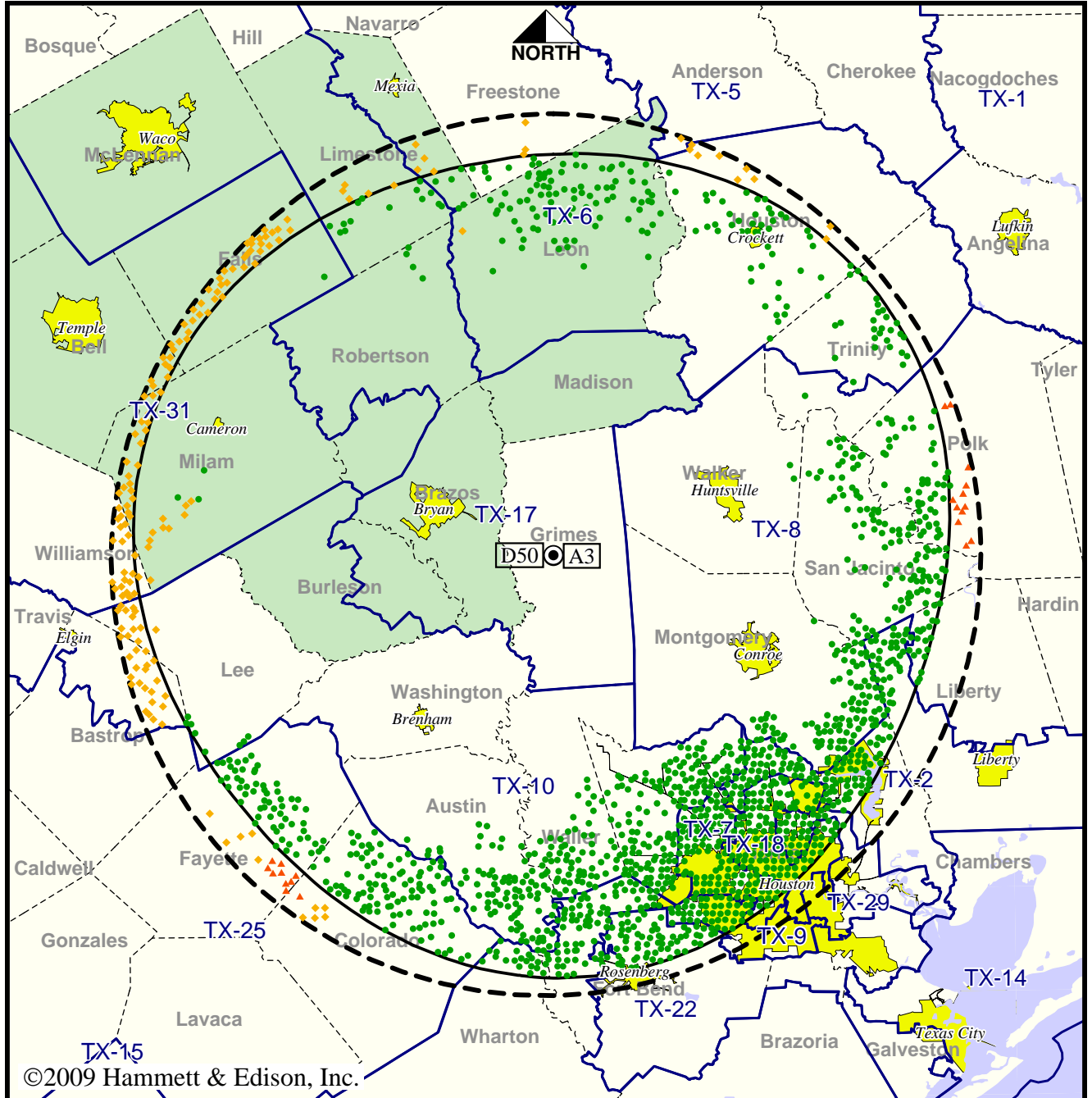
|                 |                 |
|-----------------|-----------------|
| Analog service  | 708,725 persons |
| Digital service | 2,877,365       |
| Analog loss     | 17,200          |
| Digital gain    | 2,185,840       |
| Net gain        | 2,168,640       |

Station KBTX-TV • Analog Channel 3, DTV Channel 50 • Bryan, TX

Approved Post-Transition Operation: Granted Construction Permit

Digital CP (solid): 1000 kW ERP at 507 m HAAT, Network: CBS  
 vs. Analog (dashed): 69.2 kW ERP at 515 m HAAT, Network: CBS

Market: Waco-Temple-Bryan, TX



©2009 Hammett & Edison, Inc.

- Coverage gained after DTV transition
- No symbol = no change in coverage
- ◆ Coverage lost but still served by same network
- ▲ Coverage lost and no other service by same network

|                 |                 |
|-----------------|-----------------|
| Analog service  | 708,725 persons |
| Digital service | 3,109,375       |
| Analog loss     | 12,264          |
| Digital gain    | 2,412,914       |
| Net gain        | 2,400,650       |

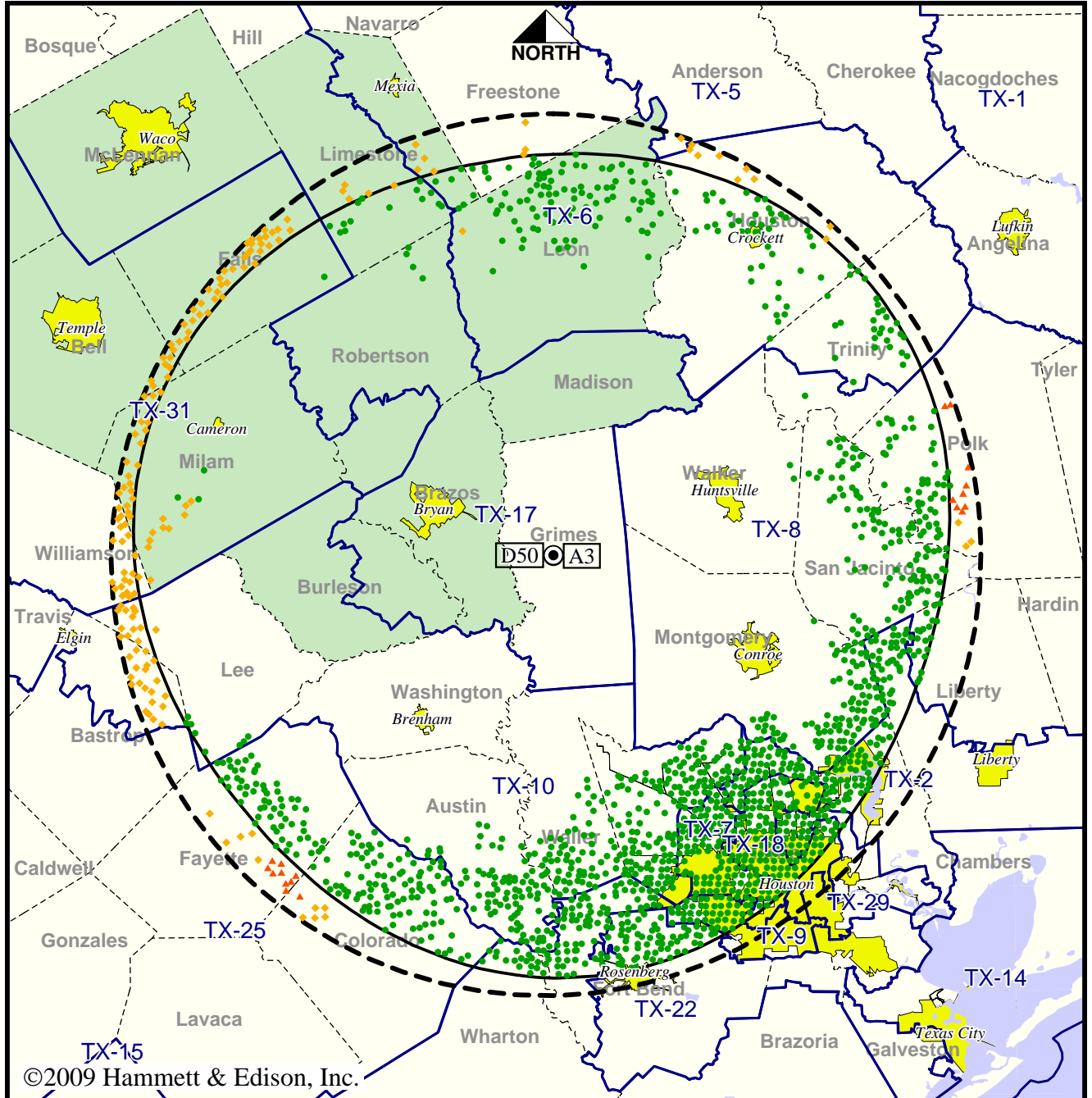
BMPCDT-20080611AAI  
 KBTX-TV Digital CP

Station KBTX-TV • Analog Channel 3, DTV Channel 50 • Bryan, TX

Approved or Requested Post-Transition Operation: Granted Construction Permit

Digital CP (solid): 1000 kW ERP at 507 m HAAT, Network: CBS  
 vs. Analog (dashed): 69.2 kW ERP at 515 m HAAT, Network: CBS

Market: Waco-Temple-Bryan, TX



©2009 Hammett & Edison, Inc.

- Coverage gained after DTV transition
- No symbol = no change in coverage
- ◆ Coverage lost but still served by same network
- ▲ Coverage lost and no other service by same network

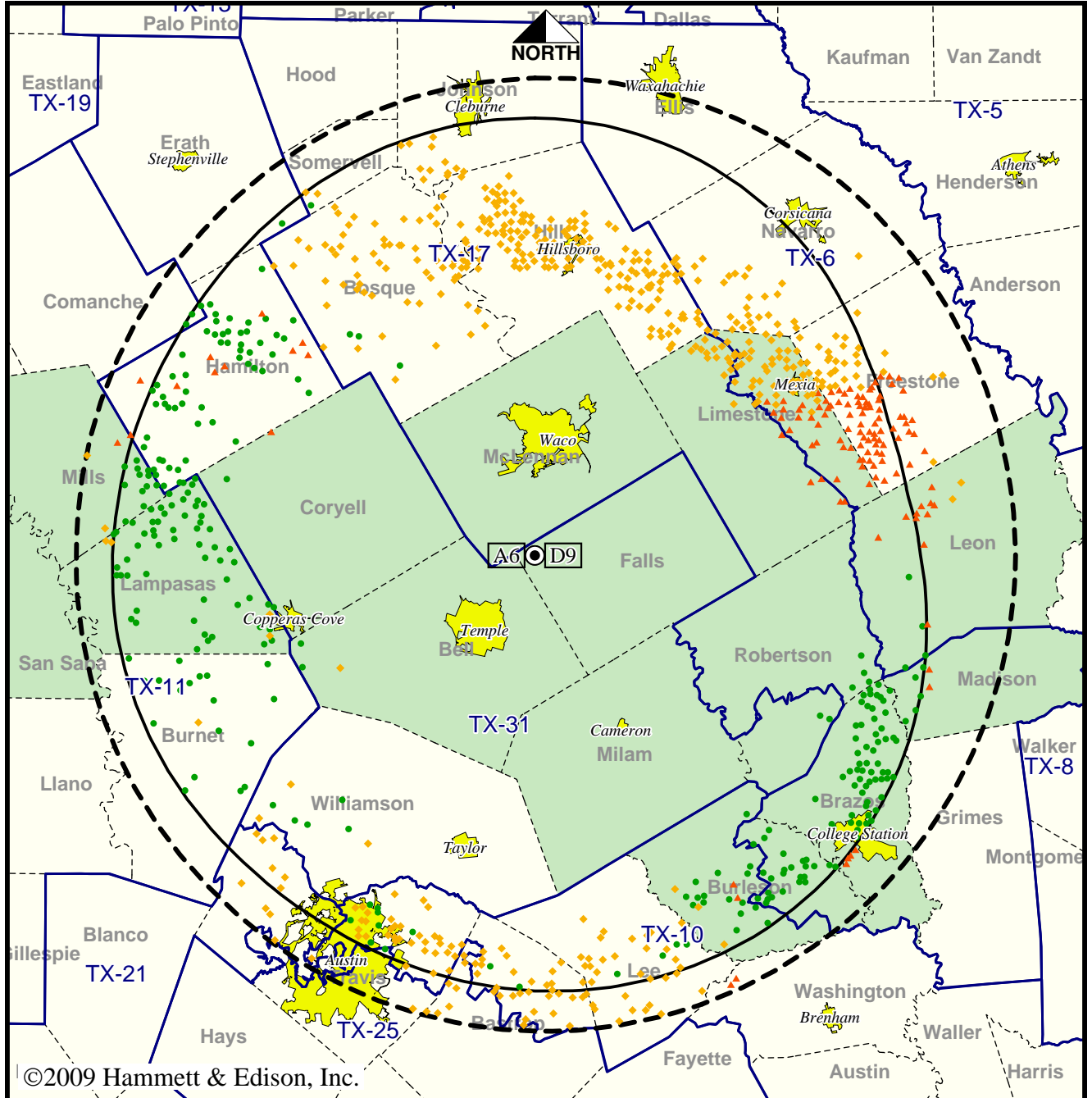
|                 |                 |
|-----------------|-----------------|
| Analog service  | 708,725 persons |
| Digital service | 3,109,375       |
| Analog loss     | 12,264          |
| Digital gain    | 2,412,914       |
| Net gain        | 2,400,650       |

Station KCEN-TV • Analog Channel 6, DTV Channel 9 • Temple, TX

Expected Operation on June 13: Licensed

Digital License (solid): 25.0 kW ERP at 527 m HAAT, Network: NBC  
 vs. Analog (dashed): 100 kW ERP at 573 m HAAT, Network: NBC

Market: Waco-Temple-Bryan, TX



©2009 Hammett & Edison, Inc.

- Coverage gained after DTV transition
- No symbol = no change in coverage
- ◆ Coverage lost but still served by same network
- ▲ Coverage lost and no other service by same network

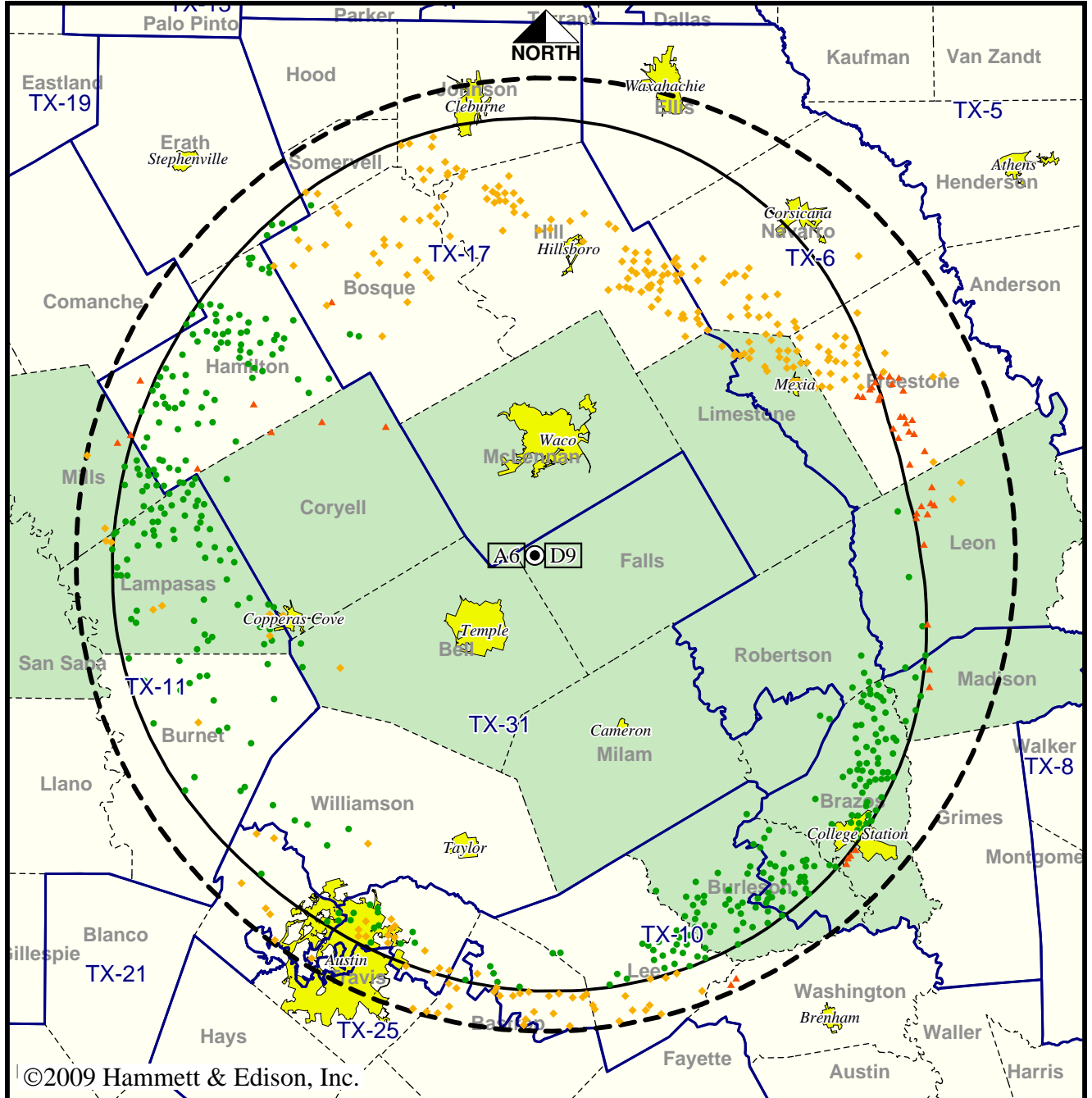
|                 |                   |
|-----------------|-------------------|
| Analog service  | 1,225,037 persons |
| Digital service | 1,164,199         |
| Analog loss     | 117,876           |
| Digital gain    | 57,038            |
| Net gain        | -60,838           |

Station KCEN-TV • Analog Channel 6, DTV Channel 9 • Temple, TX

Approved Post-Transition Operation: Licensed

Digital License (solid): 25.0 kW ERP at 527 m HAAT, Network: NBC  
 vs. Analog (dashed): 100 kW ERP at 573 m HAAT, Network: NBC

Market: Waco-Temple-Bryan, TX



©2009 Hammett & Edison, Inc.

10 MI 0 10 20 30 40 50 100 80 60 40 20 0 KM 20

- Coverage gained after DTV transition
- No symbol = no change in coverage
- ◆ Coverage lost but still served by same network
- ▲ Coverage lost and no other service by same network

|                 |                   |
|-----------------|-------------------|
| Analog service  | 1,225,037 persons |
| Digital service | 1,242,714         |
| Analog loss     | 66,594            |
| Digital gain    | 84,271            |
| Net gain        | 17,677            |

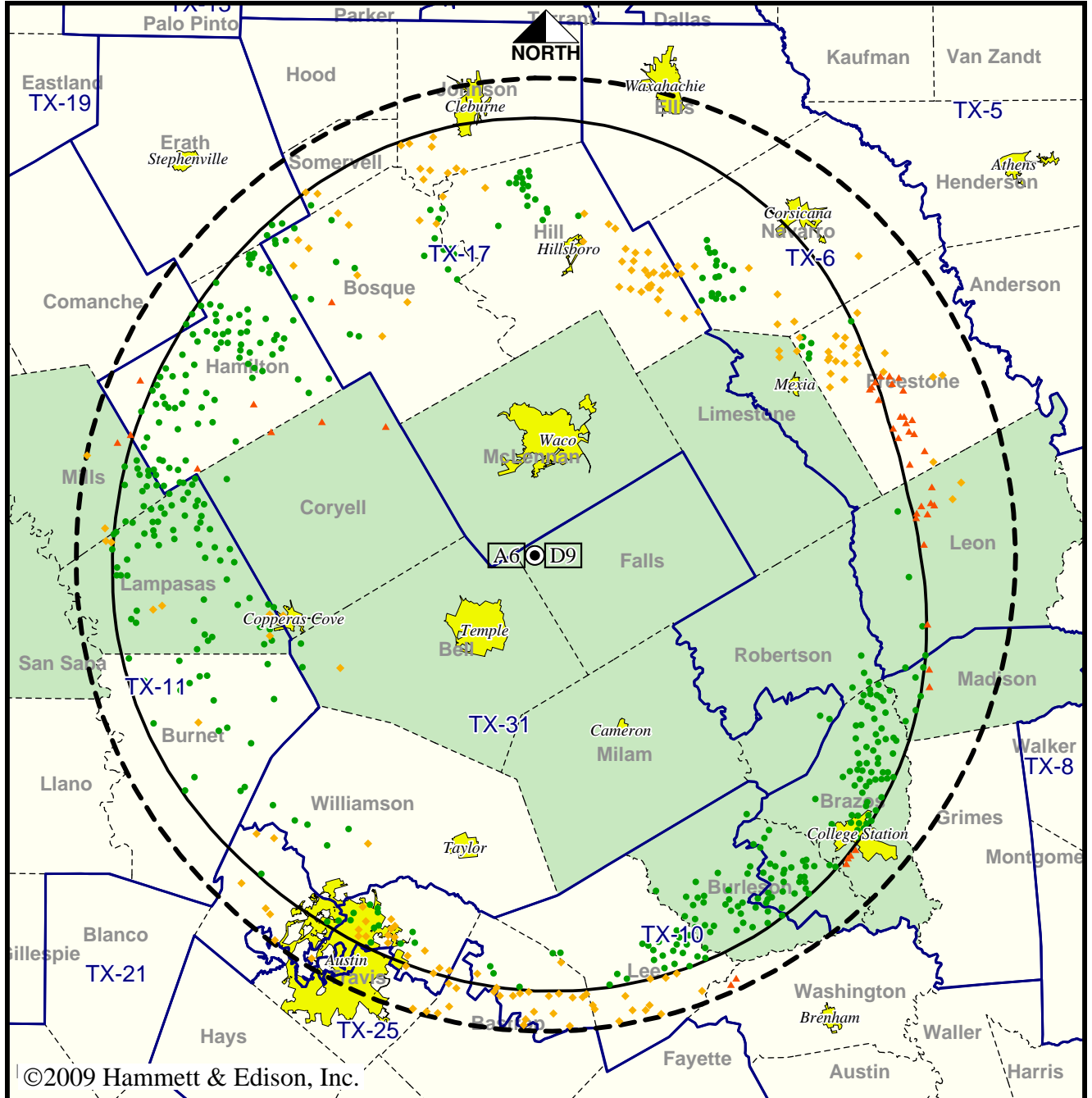


Station KCEN-TV • Analog Channel 6, DTV Channel 9 • Temple, TX

Approved or Requested Post-Transition Operation: Licensed

Digital License (solid): 25.0 kW ERP at 527 m HAAT, Network: NBC  
 vs. Analog (dashed): 100 kW ERP at 573 m HAAT, Network: NBC

Market: Waco-Temple-Bryan, TX



©2009 Hammett & Edison, Inc.

- Coverage gained after DTV transition
- No symbol = no change in coverage
- ◆ Coverage lost but still served by same network
- ▲ Coverage lost and no other service by same network

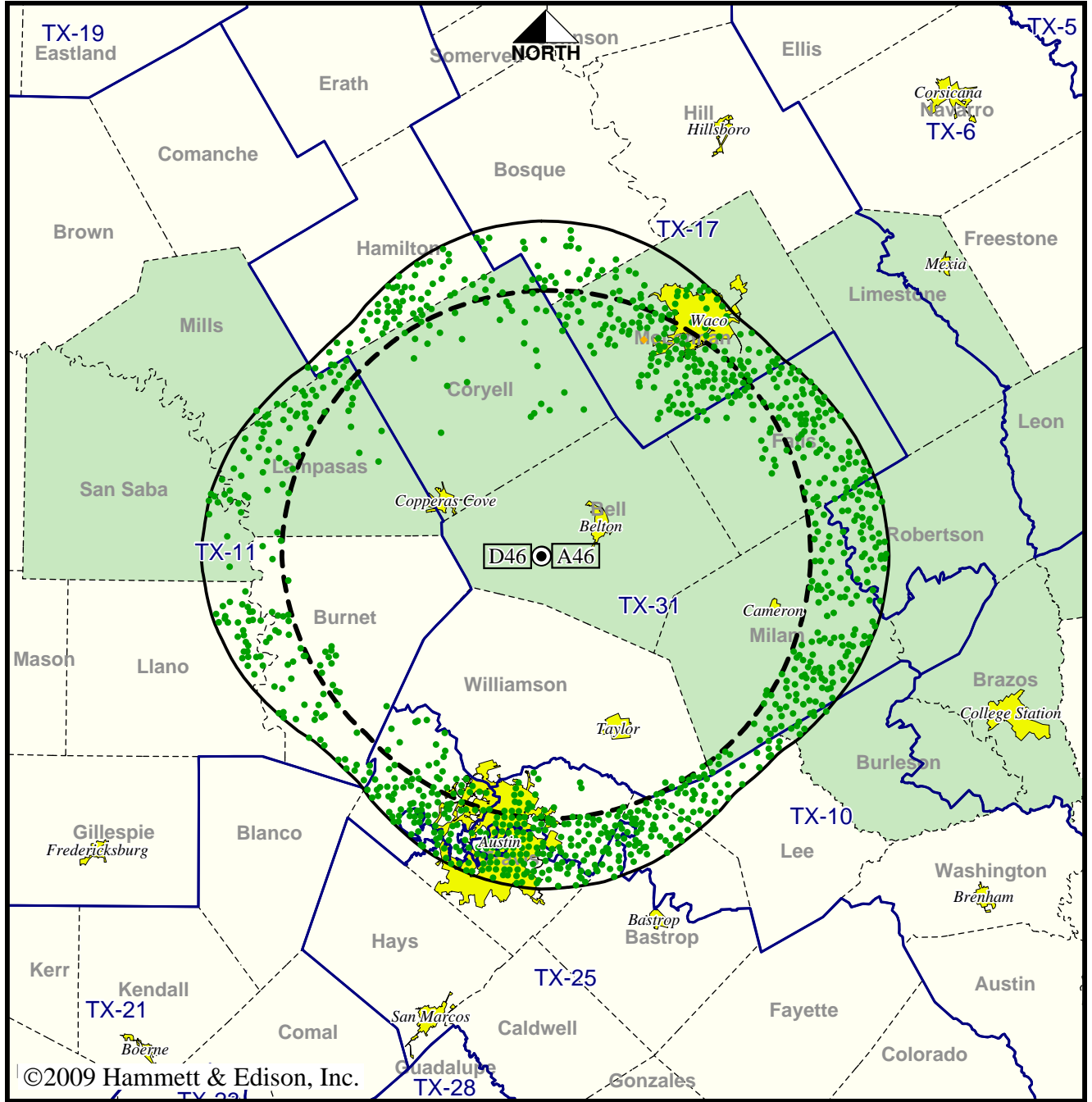
|                 |                   |
|-----------------|-------------------|
| Analog service  | 1,225,037 persons |
| Digital service | 1,245,359         |
| Analog loss     | 62,580            |
| Digital gain    | 82,902            |
| Net gain        | 20,322            |

TV Station KNCT • Analog Channel 46, DTV Channel 46 • Belton, TX

Expected Operation on June 13: Appendix B Facility

Digital Appendix B (solid): 232 kW ERP at 360 m HAAT, Network: PBS  
 vs. Analog (dashed): 575 kW ERP at 384 m HAAT, Network: PBS

Market: Waco-Temple-Bryan, TX



©2009 Hammett & Edison, Inc.

- Coverage gained after DTV transition
- No symbol = no change in coverage
- ◆ Coverage lost but still served by same network

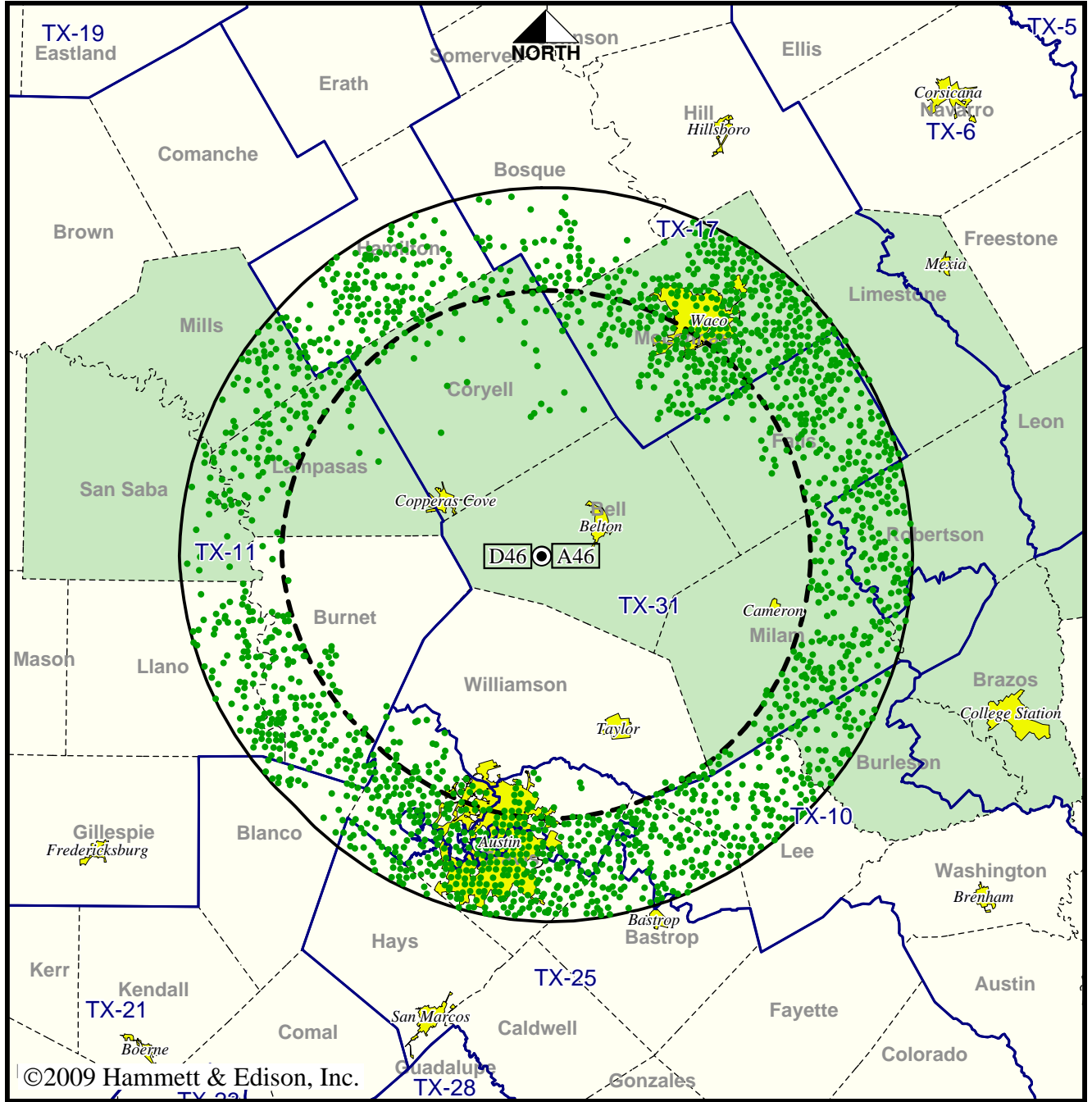
|                 |                 |
|-----------------|-----------------|
| Analog service  | 738,113 persons |
| Digital service | 1,354,320       |
| Analog loss     | 111             |
| Digital gain    | 616,318         |
| Net gain        | 616,207         |

**TV Station KNCT • Analog Channel 46, DTV Channel 46 • Belton, TX**

**Approved Post-Transition Operation: Granted Construction Permit**

**Digital CP (solid): 500 kW ERP at 392 m HAAT, Network: PBS  
vs. Analog (dashed): 575 kW ERP at 384 m HAAT, Network: PBS**

**Market: Waco-Temple-Bryan, TX**



©2009 Hammett & Edison, Inc.

10 MI 0 10 20 30 40 50 100 80 60 40 20 0 KM 20

- Coverage gained after DTV transition
- No symbol = no change in coverage

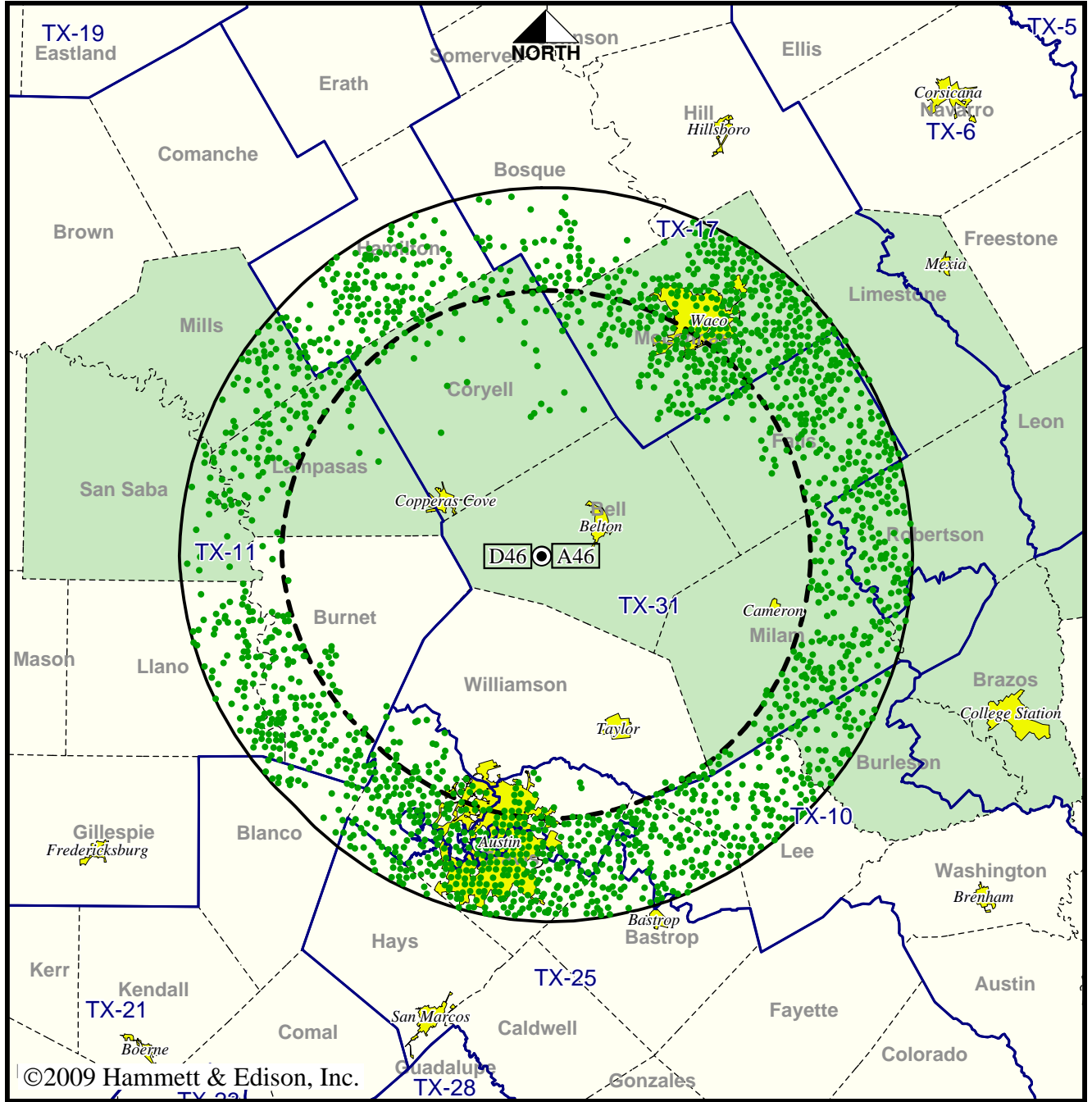
|                 |                 |
|-----------------|-----------------|
| Analog service  | 738,113 persons |
| Digital service | 1,664,311       |
| Analog loss     | 0               |
| Digital gain    | 926,198         |
| Net gain        | 926,198         |

TV Station KNCT • Analog Channel 46, DTV Channel 46 • Belton, TX

Approved or Requested Post-Transition Operation: Granted Construction Permit

Digital CP (solid): 500 kW ERP at 392 m HAAT, Network: PBS  
 vs. Analog (dashed): 575 kW ERP at 384 m HAAT, Network: PBS

Market: Waco-Temple-Bryan, TX



©2009 Hammett & Edison, Inc.

● Coverage gained after DTV transition  
 No symbol = no change in coverage

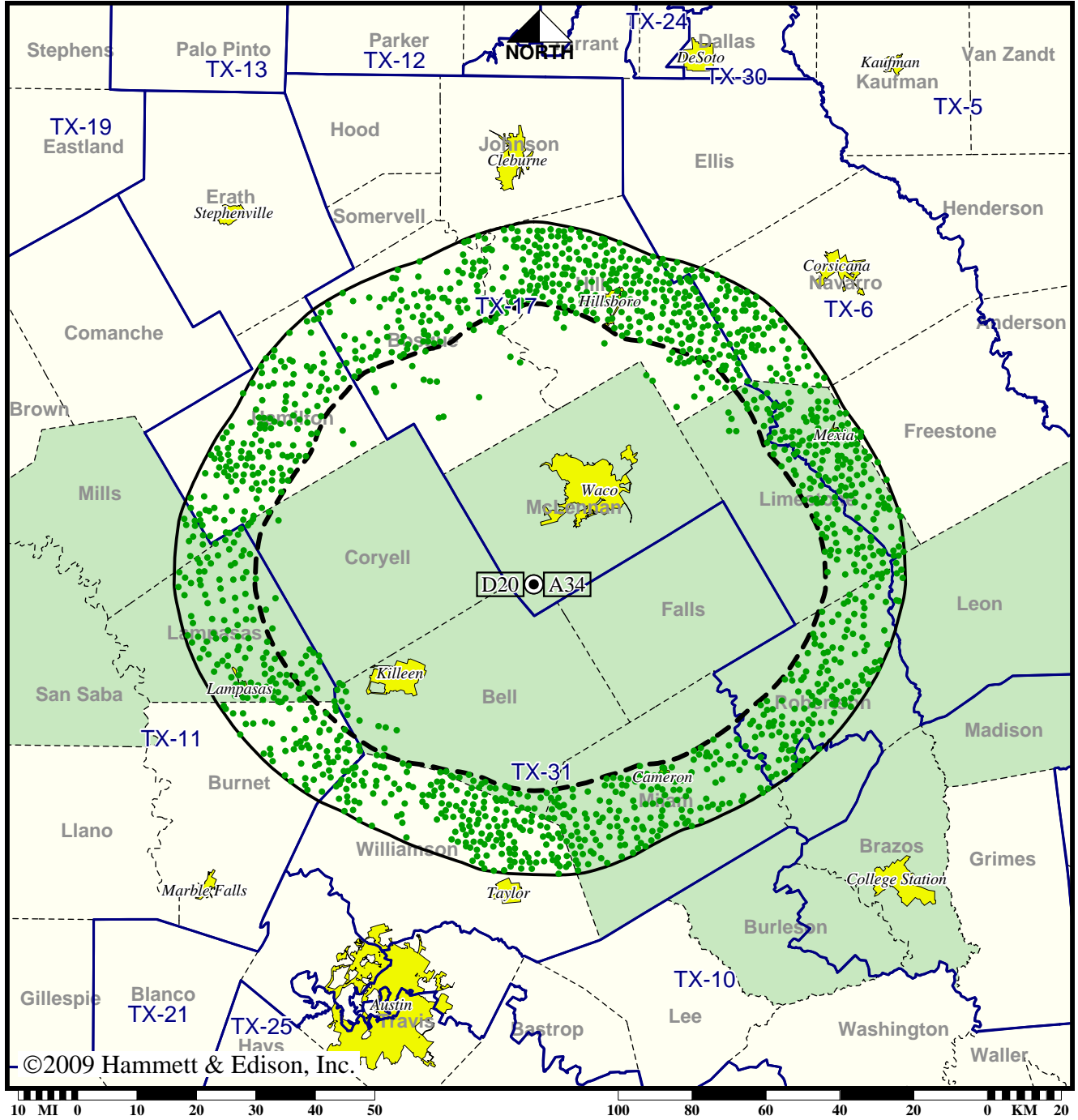
|                 |                 |
|-----------------|-----------------|
| Analog service  | 738,113 persons |
| Digital service | 1,664,311       |
| Analog loss     | 0               |
| Digital gain    | 926,198         |
| Net gain        | 926,198         |

Station KWBU-TV • Analog Channel 34, DTV Channel 20 • Waco, TX

Expected Operation on June 13: Licensed

Digital License (solid): 700 kW ERP at 319 m HAAT, Network: PBS  
 vs. Analog (dashed): 1950 kW ERP at 319 m HAAT, Network: PBS

Market: Waco-Temple-Bryan, TX



● Coverage gained after DTV transition  
 No symbol = no change in coverage

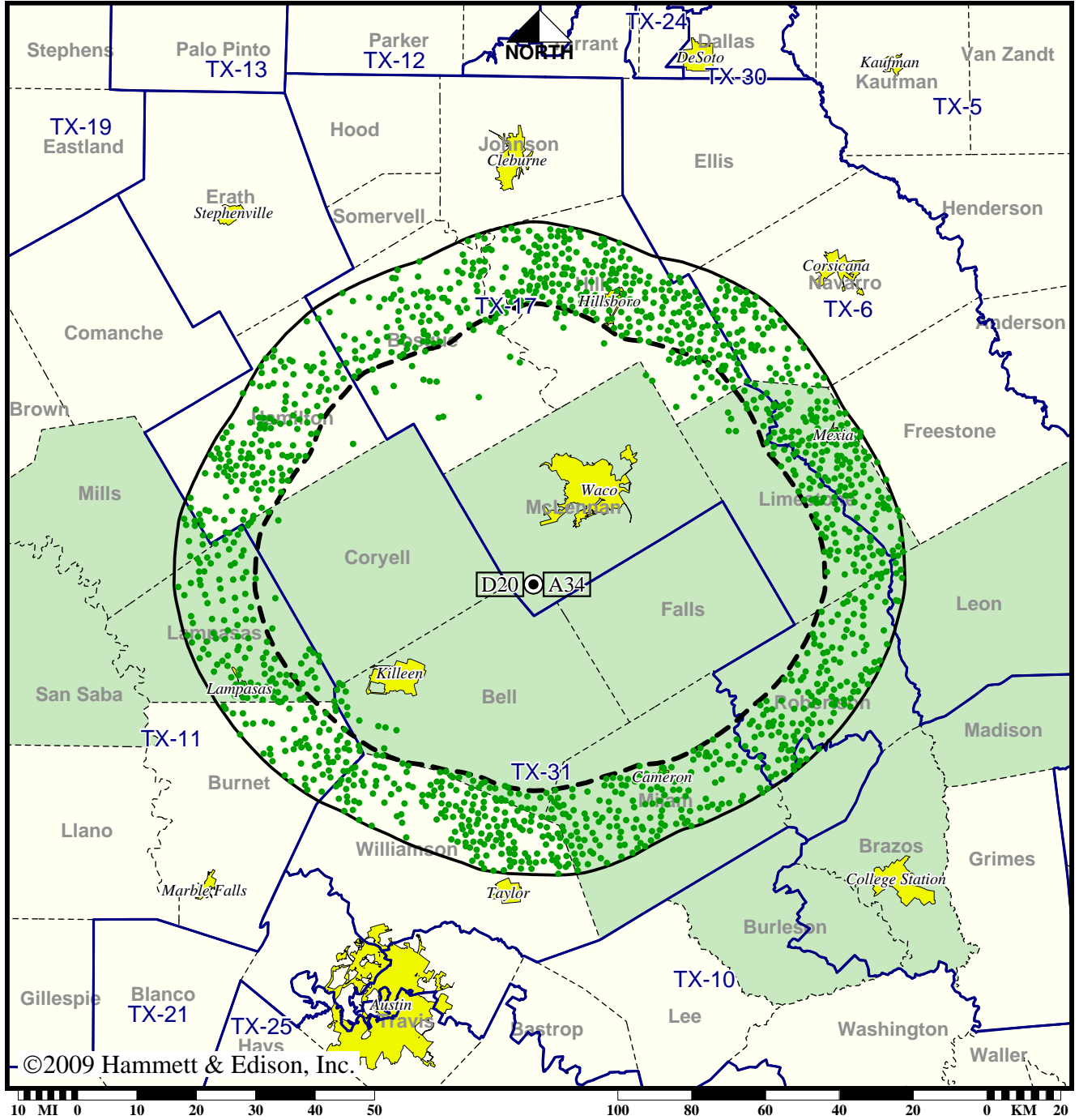
|                 |                 |
|-----------------|-----------------|
| Analog service  | 570,988 persons |
| Digital service | 676,007         |
| Analog loss     | 0               |
| Digital gain    | 105,019         |
| Net gain        | 105,019         |

Station KWBU-TV • Analog Channel 34, DTV Channel 20 • Waco, TX

Approved Post-Transition Operation: Licensed

Digital License (solid): 700 kW ERP at 319 m HAAT, Network: PBS  
 vs. Analog (dashed): 1950 kW ERP at 319 m HAAT, Network: PBS

Market: Waco-Temple-Bryan, TX



©2009 Hammett & Edison, Inc.

● Coverage gained after DTV transition  
 No symbol = no change in coverage

|                 |                 |
|-----------------|-----------------|
| Analog service  | 570,988 persons |
| Digital service | 674,194         |
| Analog loss     | 0               |
| Digital gain    | 103,206         |
| Net gain        | 103,206         |

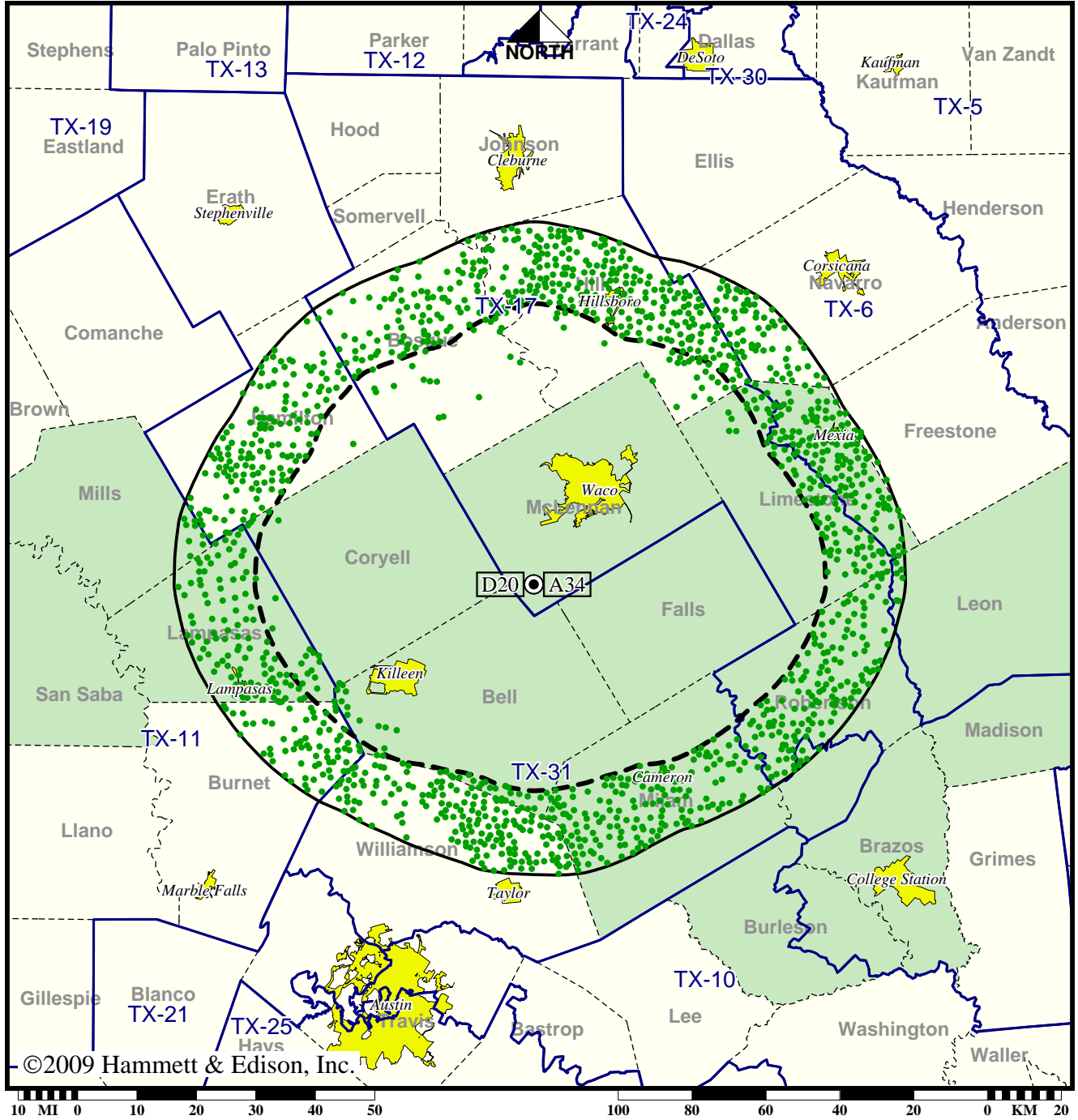
BLEDT-20060622AAS  
 KWBU-TV Digital License

Station KWBU-TV • Analog Channel 34, DTV Channel 20 • Waco, TX

Approved or Requested Post-Transition Operation: Licensed

Digital License (solid): 700 kW ERP at 319 m HAAT, Network: PBS  
 vs. Analog (dashed): 1950 kW ERP at 319 m HAAT, Network: PBS

Market: Waco-Temple-Bryan, TX



● Coverage gained after DTV transition  
 No symbol = no change in coverage

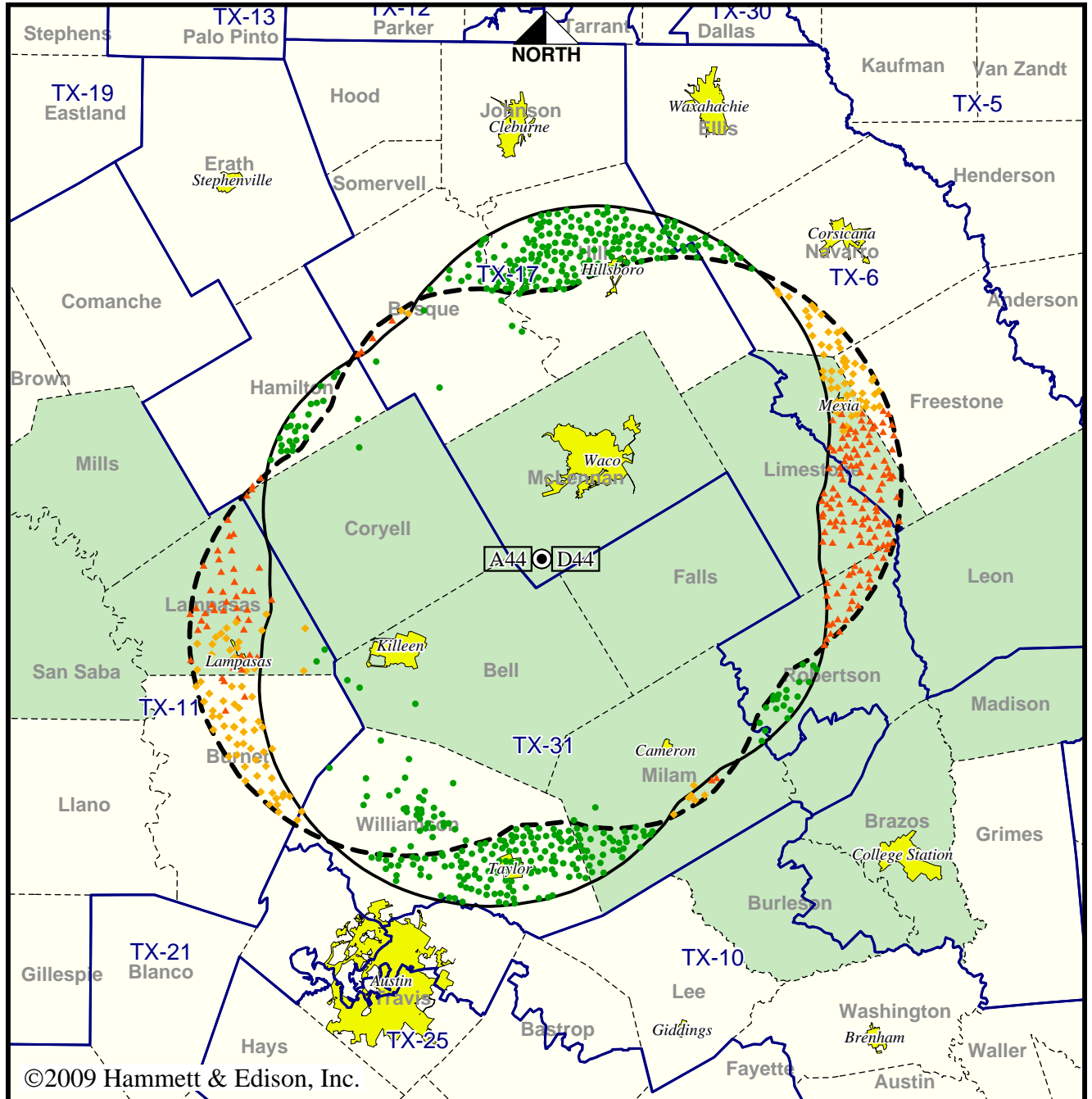
|                 |                 |
|-----------------|-----------------|
| Analog service  | 570,988 persons |
| Digital service | 674,194         |
| Analog loss     | 0               |
| Digital gain    | 103,206         |
| Net gain        | 103,206         |

**TV Station KWKT • Analog Channel 44, DTV Channel 44 • Waco, TX**

**Expected Operation on June 13: Granted Construction Permit**

**Digital CP (solid): 100 kW ERP at 558 m HAAT, Network: Fox  
vs. Analog (dashed): 4170 kW ERP at 558 m HAAT, Network: Fox**

**Market: Waco-Temple-Bryan, TX**



- Coverage gained after DTV transition
- No symbol = no change in coverage
- ◆ Coverage lost but still served by same network
- ▲ Coverage lost and no other service by same network

|                 |                 |
|-----------------|-----------------|
| Analog service  | 673,854 persons |
| Digital service | 713,216         |
| Analog loss     | 24,923          |
| Digital gain    | 64,285          |
| Net gain        | 39,362          |

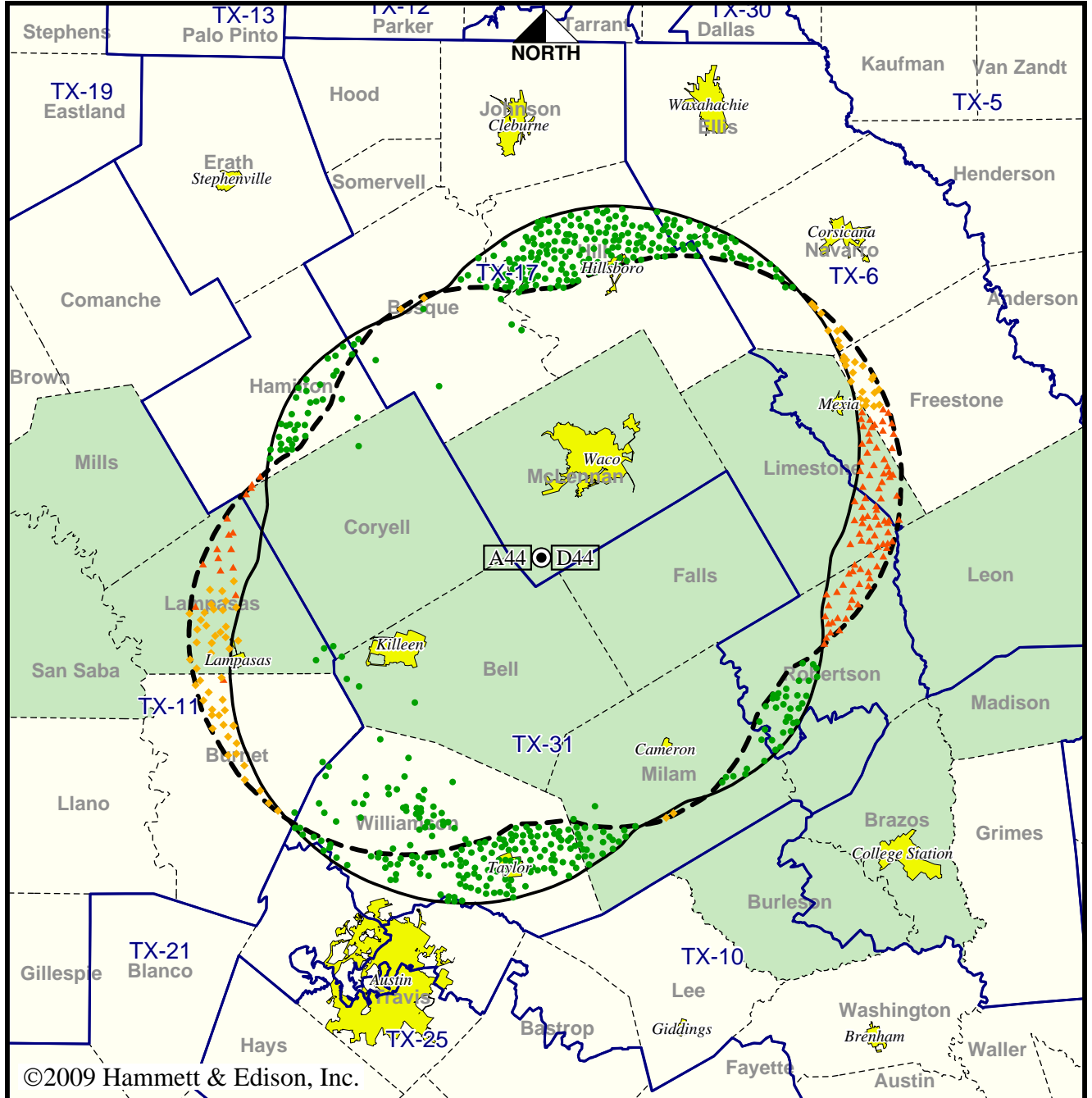


**TV Station KWKT • Analog Channel 44, DTV Channel 44 • Waco, TX**

**Approved Post-Transition Operation: Granted Construction Permit**

**Digital CP (solid): 135 kW ERP at 558 m HAAT, Network: Fox  
vs. Analog (dashed): 4170 kW ERP at 558 m HAAT, Network: Fox**

**Market: Waco-Temple-Bryan, TX**



- Coverage gained after DTV transition
- No symbol = no change in coverage
- ◆ Coverage lost but still served by same network
- ▲ Coverage lost and no other service by same network

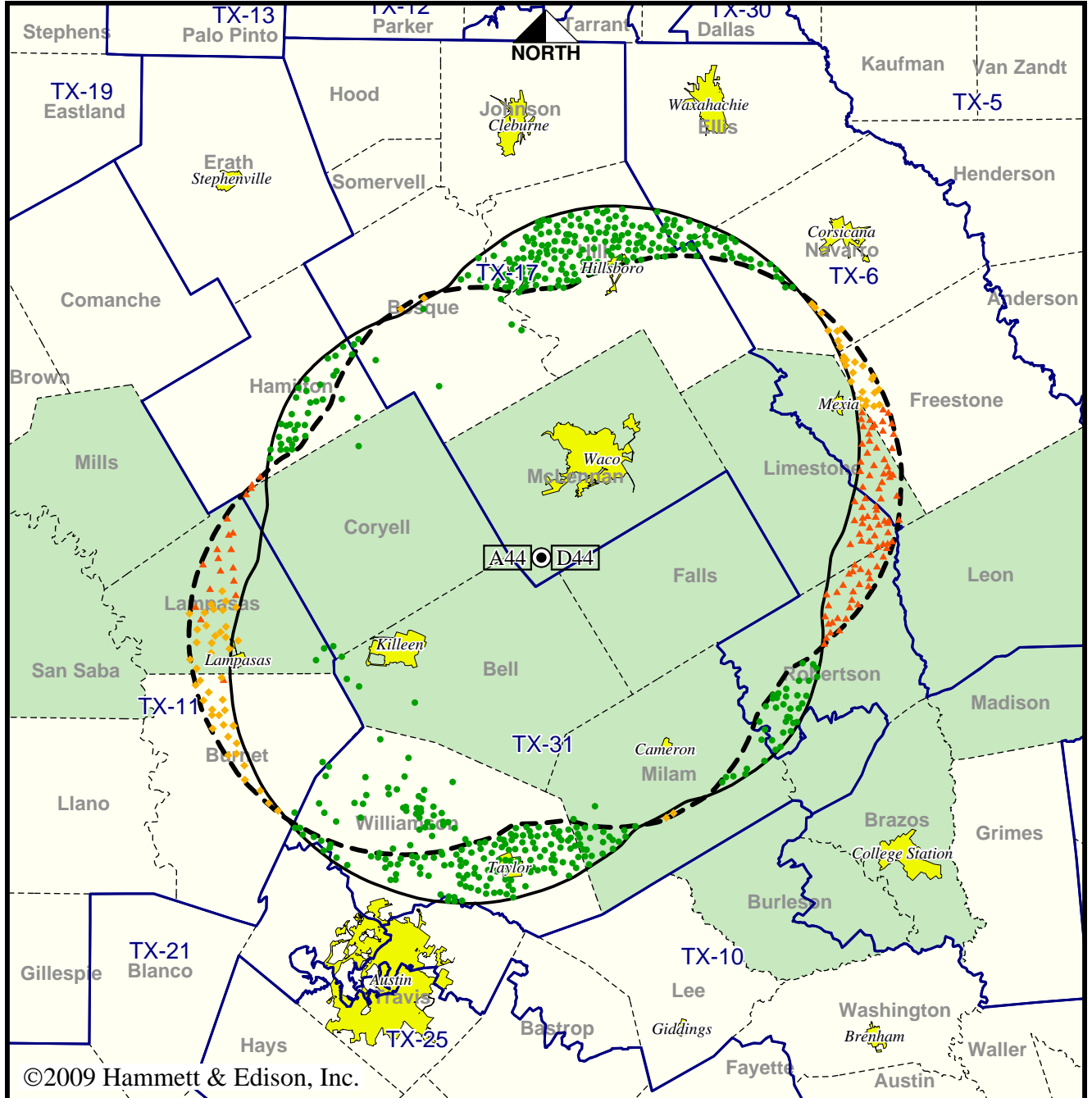
|                 |                 |
|-----------------|-----------------|
| Analog service  | 673,854 persons |
| Digital service | 734,583         |
| Analog loss     | 6,200           |
| Digital gain    | 66,929          |
| Net gain        | 60,729          |

TV Station KWKT • Analog Channel 44, DTV Channel 44 • Waco, TX

Approved or Requested Post-Transition Operation: Granted Construction Permit

Digital CP (solid): 135 kW ERP at 558 m HAAT, Network: Fox  
 vs. Analog (dashed): 4170 kW ERP at 558 m HAAT, Network: Fox

Market: Waco-Temple-Bryan, TX



- Coverage gained after DTV transition
- No symbol = no change in coverage
- ◆ Coverage lost but still served by same network
- ▲ Coverage lost and no other service by same network

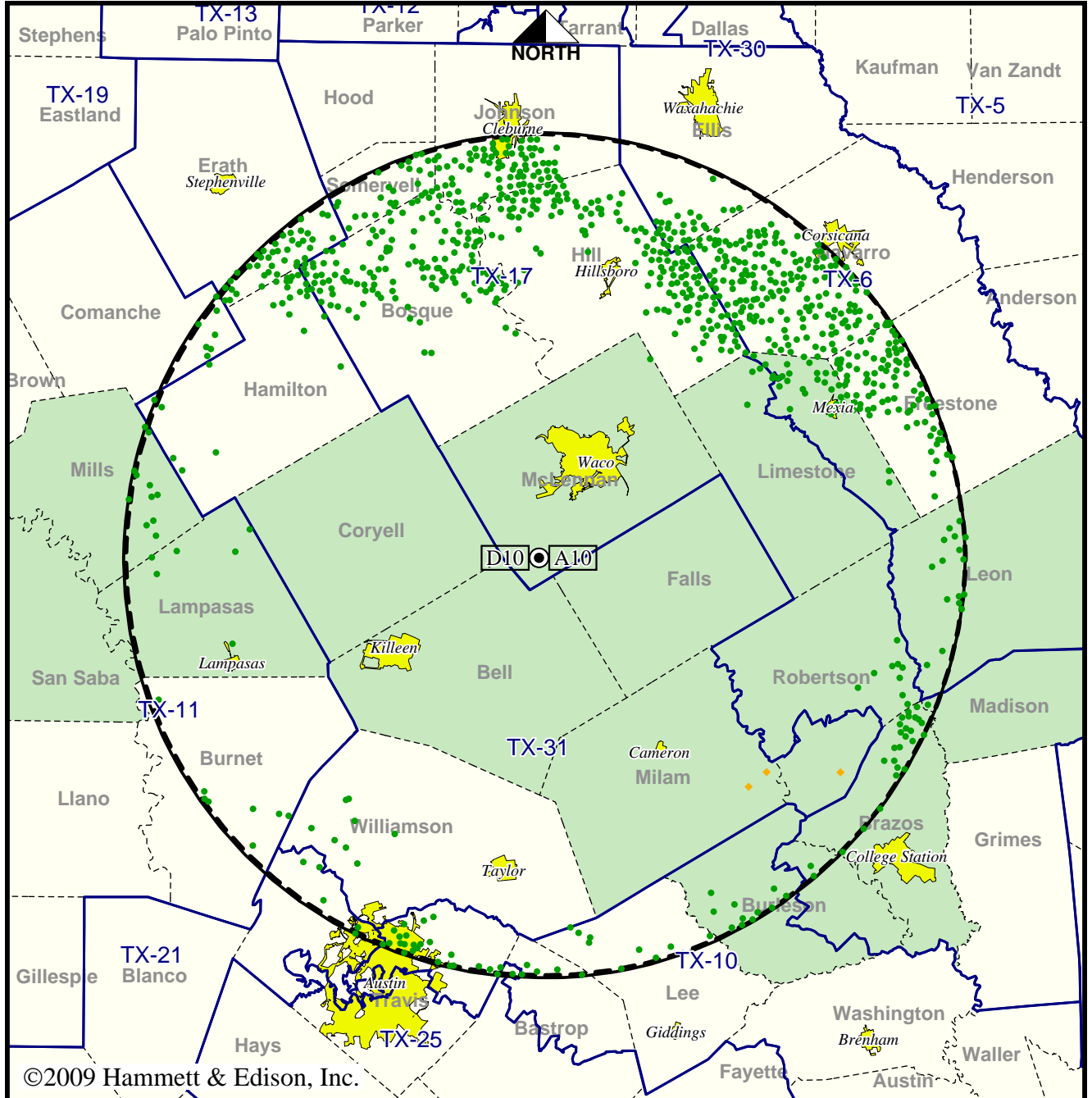
|                 |                 |
|-----------------|-----------------|
| Analog service  | 673,854 persons |
| Digital service | 734,583         |
| Analog loss     | 6,200           |
| Digital gain    | 66,929          |
| Net gain        | 60,729          |

**Station KWTX-TV • Analog Channel 10, DTV Channel 10 • Waco, TX**

**Expected Operation on June 13: Granted Construction Permit**

**Digital CP (solid): 13.8 kW ERP at 555 m HAAT, Network: CBS  
vs. Analog (dashed): 209 kW ERP at 552 m HAAT, Network: CBS**

**Market: Waco-Temple-Bryan, TX**



©2009 Hammett & Edison, Inc.

10 MI 0 10 20 30 40 50 100 80 60 40 20 0 KM 20

- Coverage gained after DTV transition
- No symbol = no change in coverage
- ◆ Coverage lost but still served by same network

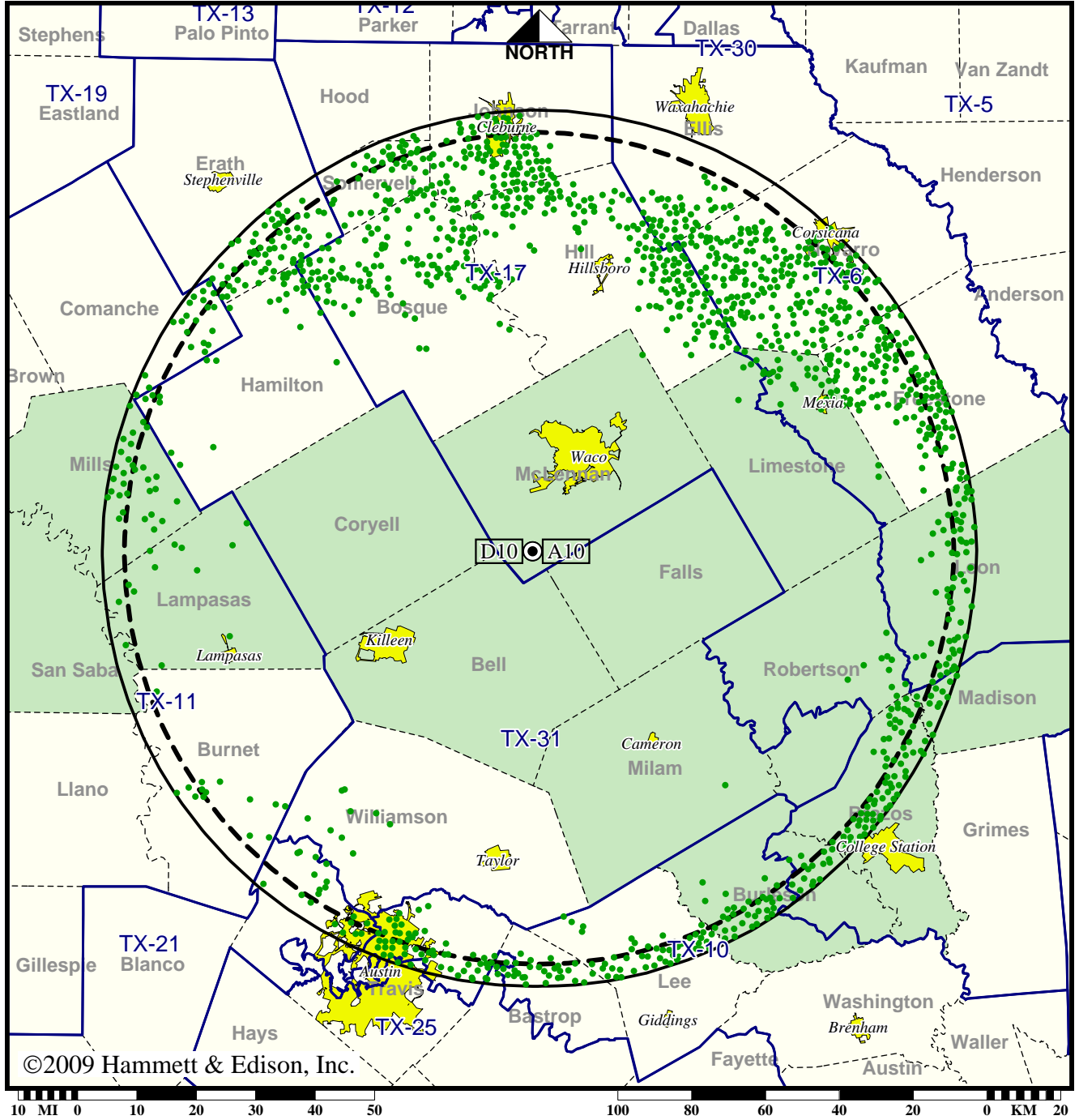
|                 |                   |
|-----------------|-------------------|
| Analog service  | 1,056,743 persons |
| Digital service | 1,182,270         |
| Analog loss     | 189               |
| Digital gain    | 125,716           |
| Net gain        | 125,527           |

**Station KWTX-TV • Analog Channel 10, DTV Channel 10 • Waco, TX**

**Approved Post-Transition Operation: Granted Construction Permit**

**Digital CP (solid): 26.0 kW ERP at 555 m HAAT, Network: CBS  
vs. Analog (dashed): 209 kW ERP at 552 m HAAT, Network: CBS**

**Market: Waco-Temple-Bryan, TX**



©2009 Hammett & Edison, Inc.

● Coverage gained after DTV transition  
No symbol = no change in coverage

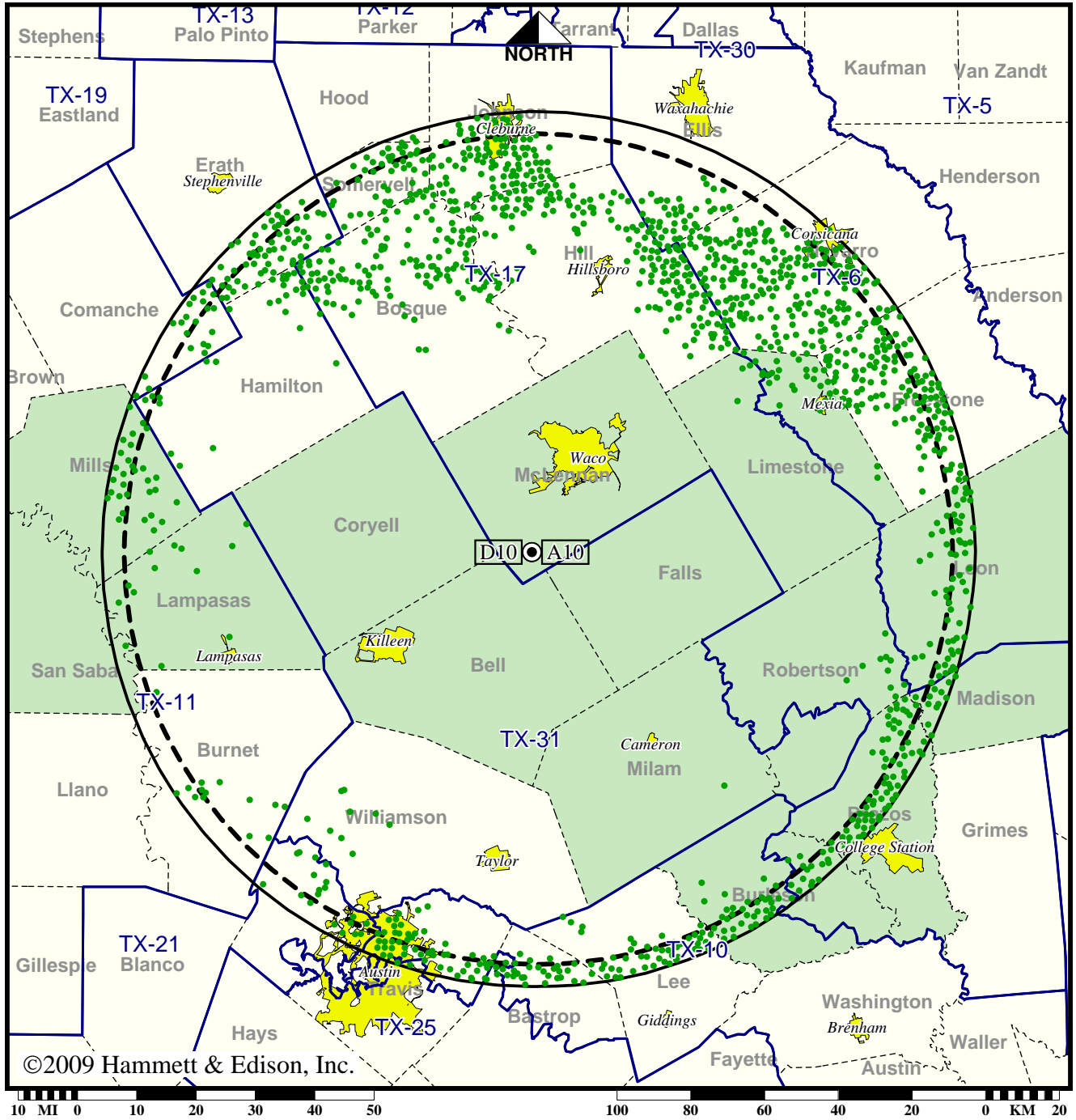
|                 |                   |
|-----------------|-------------------|
| Analog service  | 1,056,743 persons |
| Digital service | 1,369,327         |
| Analog loss     | 0                 |
| Digital gain    | 312,584           |
| Net gain        | 312,584           |

Station KWTX-TV • Analog Channel 10, DTV Channel 10 • Waco, TX

Approved or Requested Post-Transition Operation: Granted Construction Permit

Digital CP (solid): 26.0 kW ERP at 555 m HAAT, Network: CBS  
 vs. Analog (dashed): 209 kW ERP at 552 m HAAT, Network: CBS

Market: Waco-Temple-Bryan, TX



©2009 Hammett & Edison, Inc.

● Coverage gained after DTV transition  
 No symbol = no change in coverage

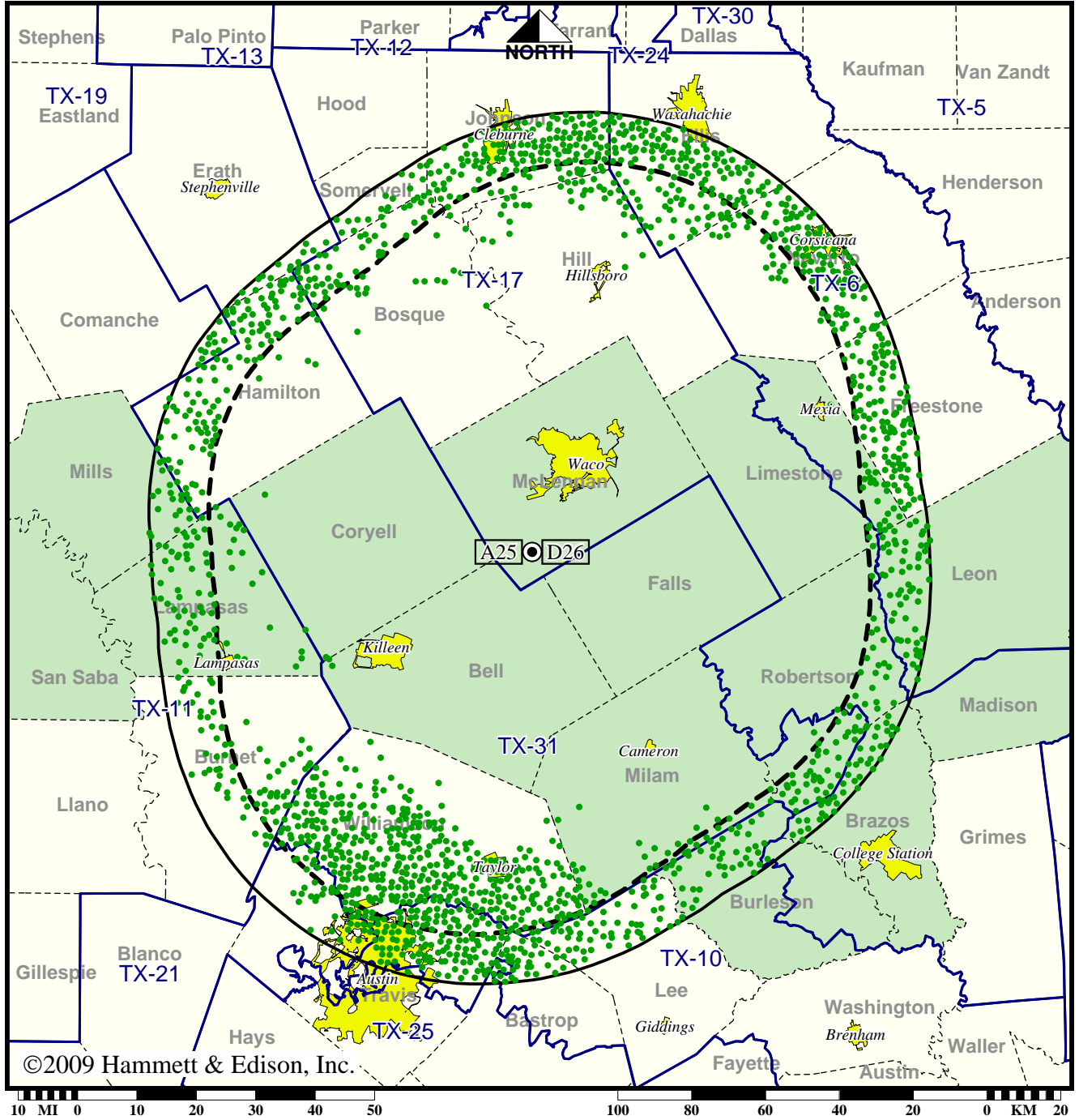
|                 |                   |
|-----------------|-------------------|
| Analog service  | 1,056,743 persons |
| Digital service | 1,369,327         |
| Analog loss     | 0                 |
| Digital gain    | 312,584           |
| Net gain        | 312,584           |

TV Station KXXV • Analog Channel 25, DTV Channel 26 • Waco, TX

Expected Operation on June 13: Licensed

Digital License (solid): 1000 kW ERP at 561 m HAAT, Network: ABC  
 vs. Analog (dashed): 5000 kW ERP at 561 m HAAT, Network: ABC

Market: Waco-Temple-Bryan, TX



©2009 Hammett & Edison, Inc.

- Coverage gained after DTV transition
- No symbol = no change in coverage

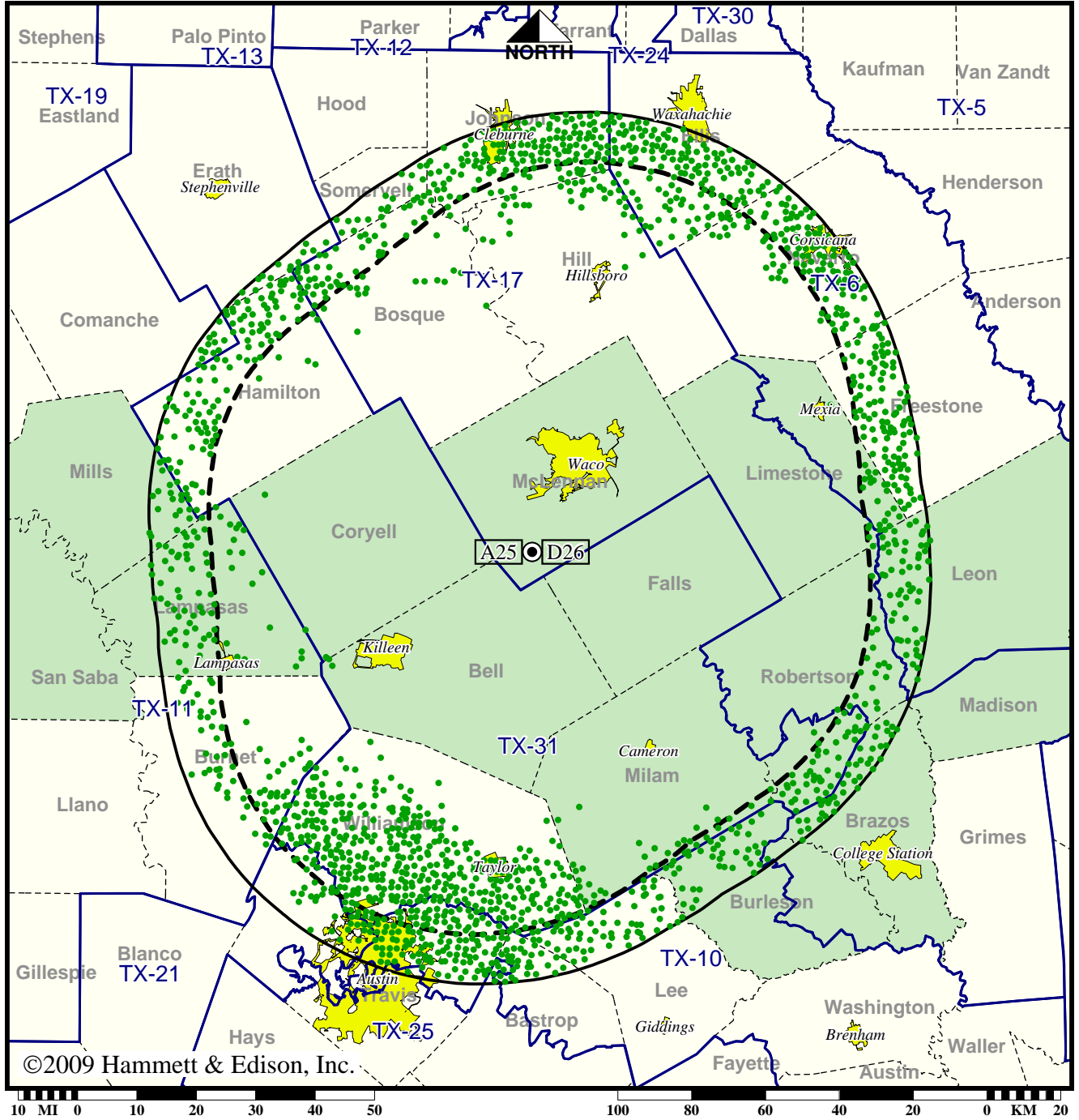
|                 |                 |
|-----------------|-----------------|
| Analog service  | 698,928 persons |
| Digital service | 1,308,048       |
| Analog loss     | 0               |
| Digital gain    | 609,120         |
| Net gain        | 609,120         |

TV Station KXXV • Analog Channel 25, DTV Channel 26 • Waco, TX

Approved Post-Transition Operation: Licensed

Digital License (solid): 1000 kW ERP at 561 m HAAT, Network: ABC  
 vs. Analog (dashed): 5000 kW ERP at 561 m HAAT, Network: ABC

Market: Waco-Temple-Bryan, TX



©2009 Hammett & Edison, Inc.

● Coverage gained after DTV transition  
 No symbol = no change in coverage

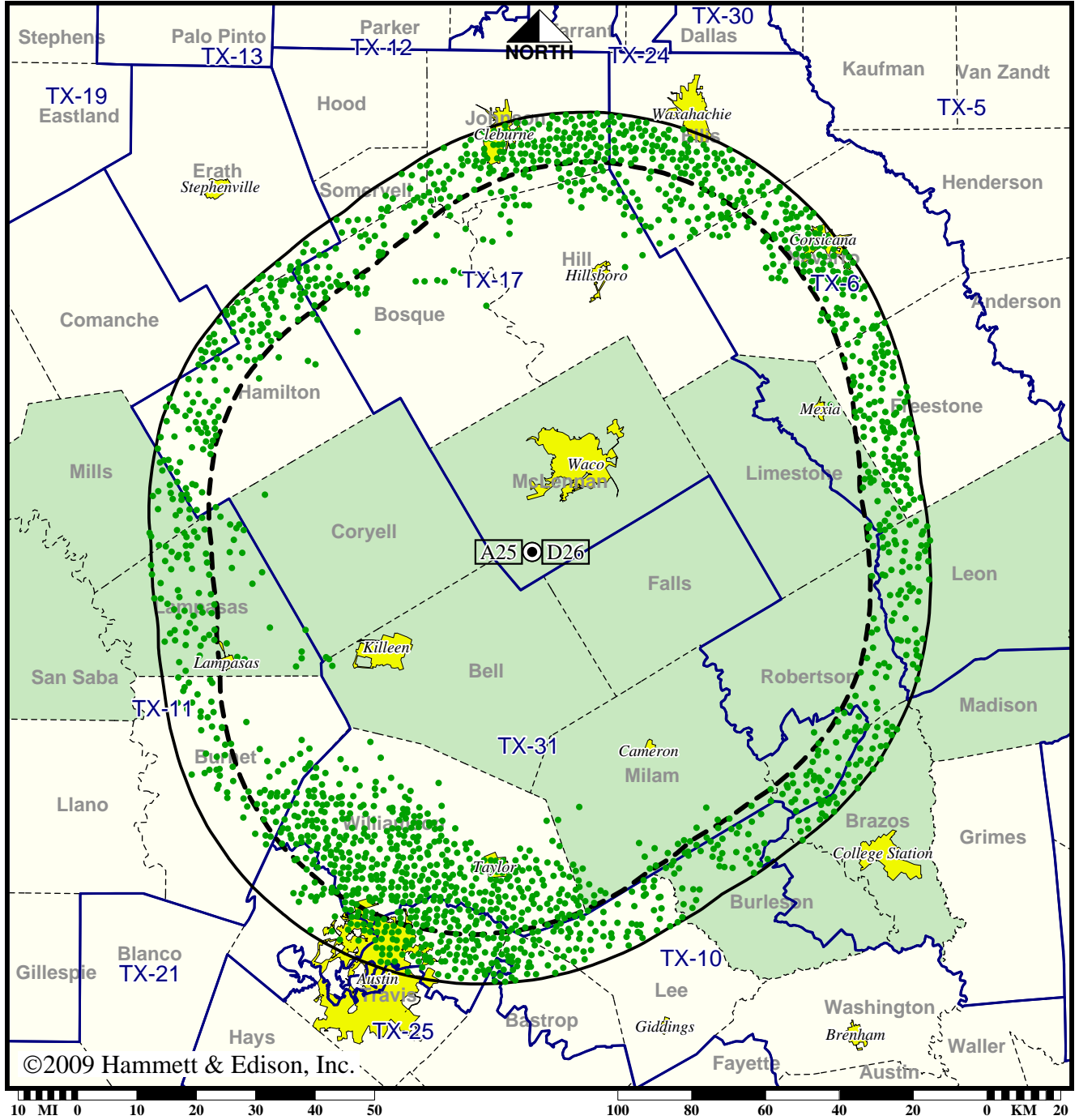
|                 |                 |
|-----------------|-----------------|
| Analog service  | 698,928 persons |
| Digital service | 1,307,652       |
| Analog loss     | 0               |
| Digital gain    | 608,724         |
| Net gain        | 608,724         |

TV Station KXXV • Analog Channel 25, DTV Channel 26 • Waco, TX

Approved or Requested Post-Transition Operation: Licensed

Digital License (solid): 1000 kW ERP at 561 m HAAT, Network: ABC  
 vs. Analog (dashed): 5000 kW ERP at 561 m HAAT, Network: ABC

Market: Waco-Temple-Bryan, TX



©2009 Hammett & Edison, Inc.

● Coverage gained after DTV transition  
 No symbol = no change in coverage

|                 |                 |
|-----------------|-----------------|
| Analog service  | 698,928 persons |
| Digital service | 1,307,652       |
| Analog loss     | 0               |
| Digital gain    | 608,724         |
| Net gain        | 608,724         |

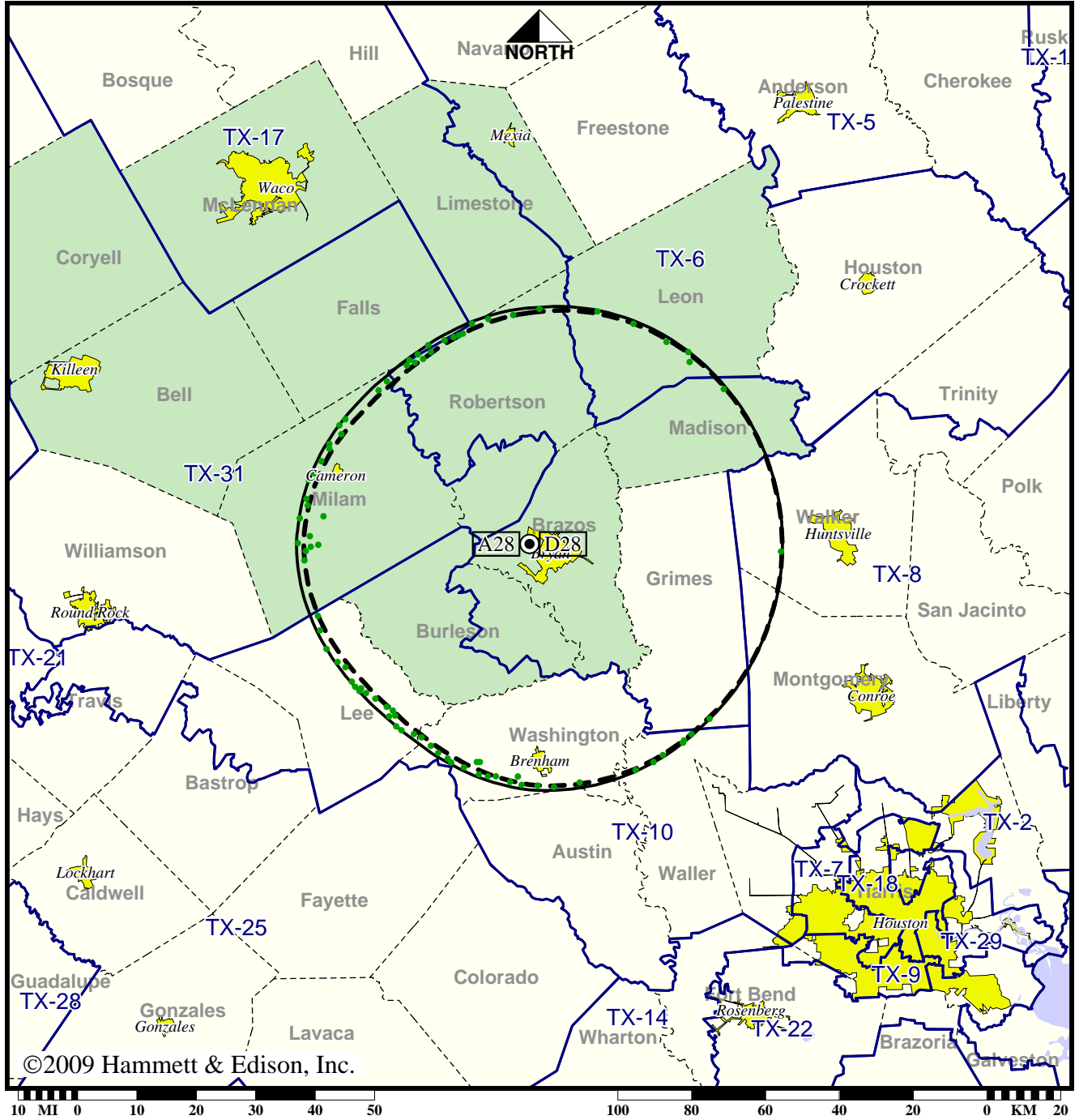


TV Station KYLE • Analog Channel 28, DTV Channel 28 • Bryan, TX

Expected Operation on June 13: Granted Construction Permit

Digital CP (solid): 50.0 kW ERP at 220 m HAAT  
 vs. Analog (dashed): 2090 kW ERP at 220 m HAAT

Market: Waco-Temple-Bryan, TX



©2009 Hammett & Edison, Inc.

● Coverage gained after DTV transition  
 No symbol = no change in coverage

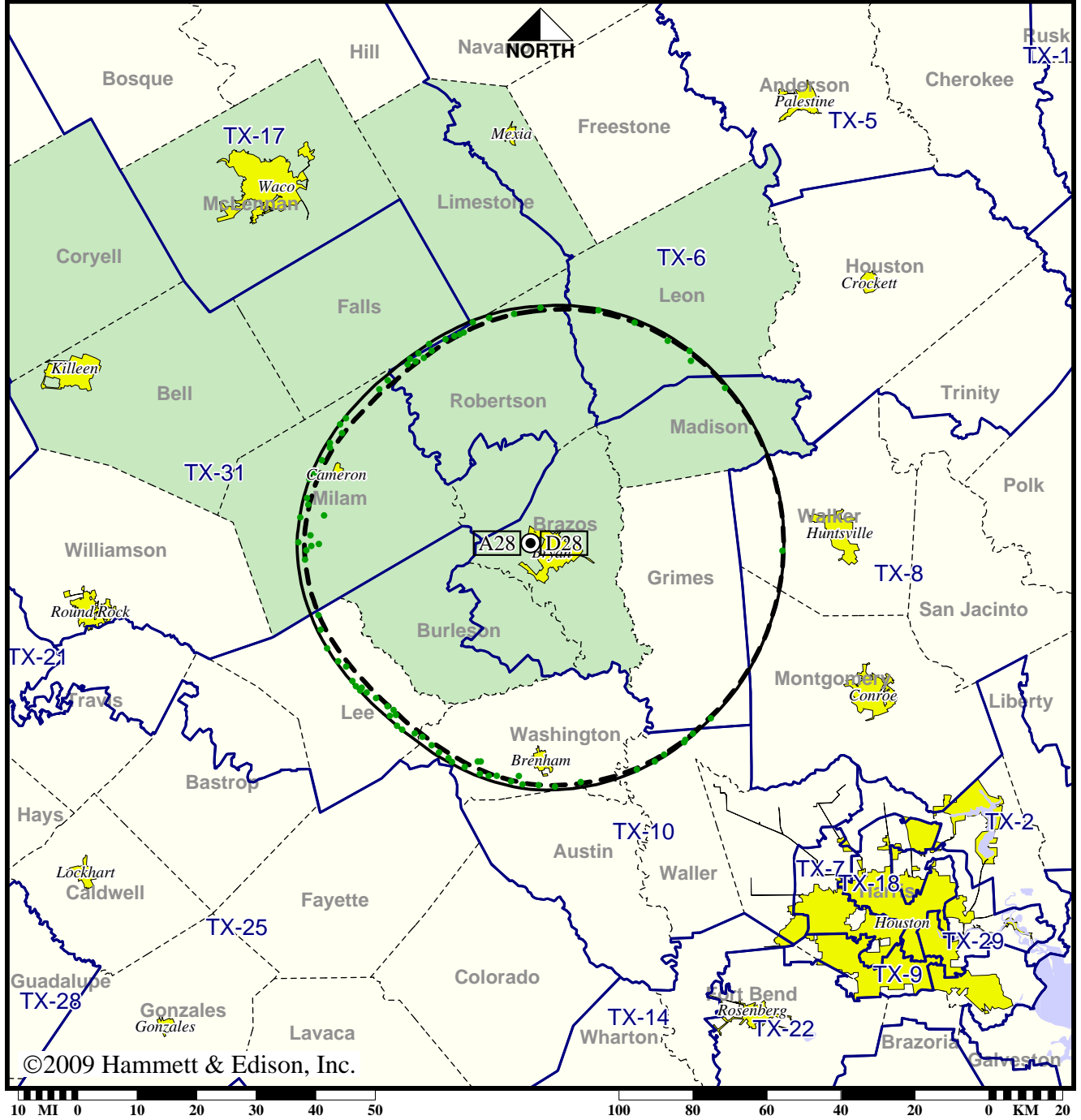
|                 |                 |
|-----------------|-----------------|
| Analog service  | 269,379 persons |
| Digital service | 272,278         |
| Analog loss     | 0               |
| Digital gain    | 2,899           |
| Net gain        | 2,899           |

TV Station KYLE • Analog Channel 28, DTV Channel 28 • Bryan, TX

Approved Post-Transition Operation: Granted Construction Permit

Digital CP (solid): 50.0 kW ERP at 220 m HAAT  
 vs. Analog (dashed): 2090 kW ERP at 220 m HAAT

Market: Waco-Temple-Bryan, TX



©2009 Hammett & Edison, Inc.

● Coverage gained after DTV transition  
 No symbol = no change in coverage

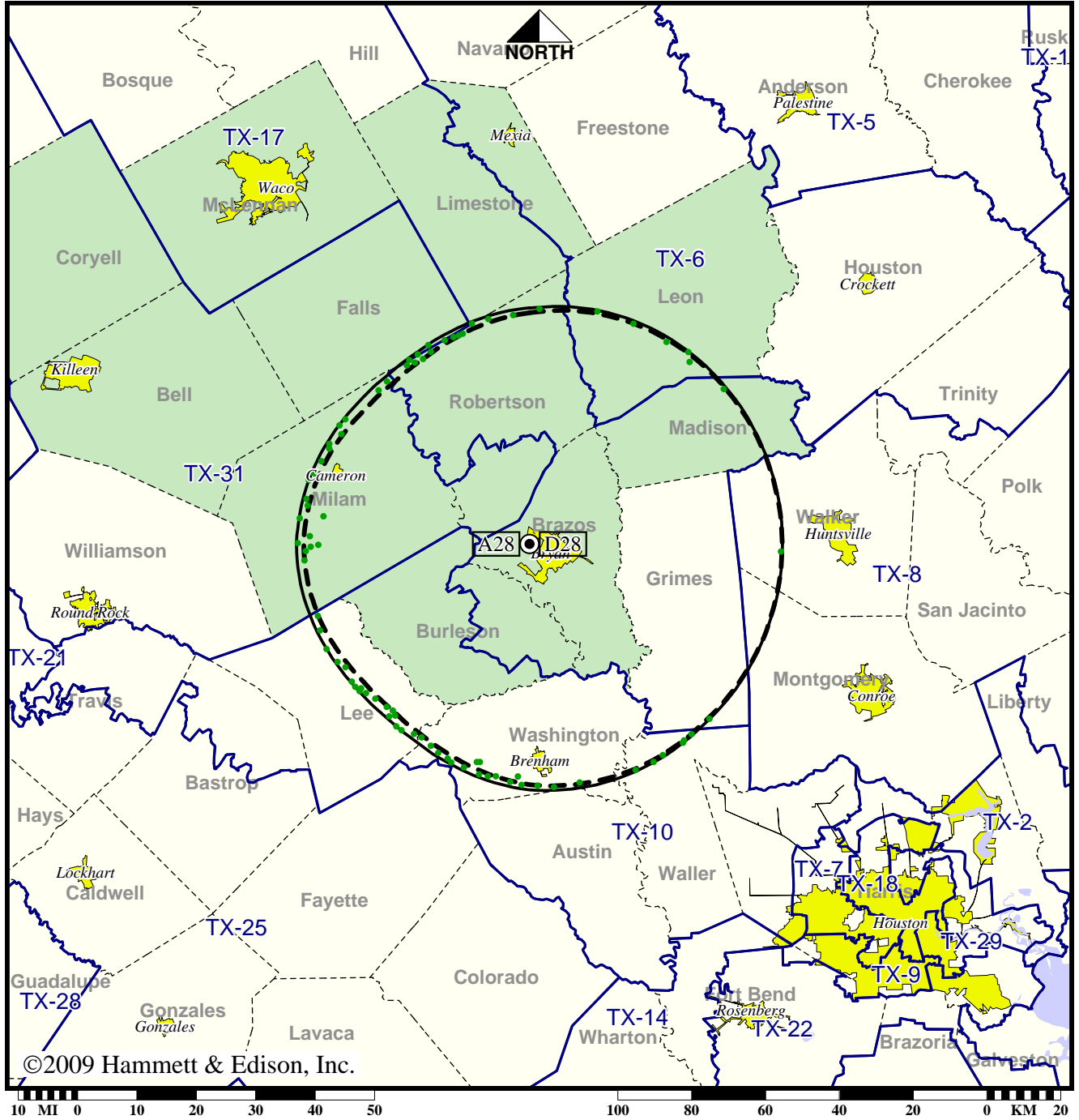
|                 |                 |
|-----------------|-----------------|
| Analog service  | 269,379 persons |
| Digital service | 272,278         |
| Analog loss     | 0               |
| Digital gain    | 2,899           |
| Net gain        | 2,899           |

TV Station KYLE • Analog Channel 28, DTV Channel 28 • Bryan, TX

Approved or Requested Post-Transition Operation: Granted Construction Permit

Digital CP (solid): 50.0 kW ERP at 220 m HAAT  
 vs. Analog (dashed): 2090 kW ERP at 220 m HAAT

Market: Waco-Temple-Bryan, TX



©2009 Hammett & Edison, Inc.

● Coverage gained after DTV transition  
 No symbol = no change in coverage

|                 |                 |
|-----------------|-----------------|
| Analog service  | 269,379 persons |
| Digital service | 272,278         |
| Analog loss     | 0               |
| Digital gain    | 2,899           |
| Net gain        | 2,899           |