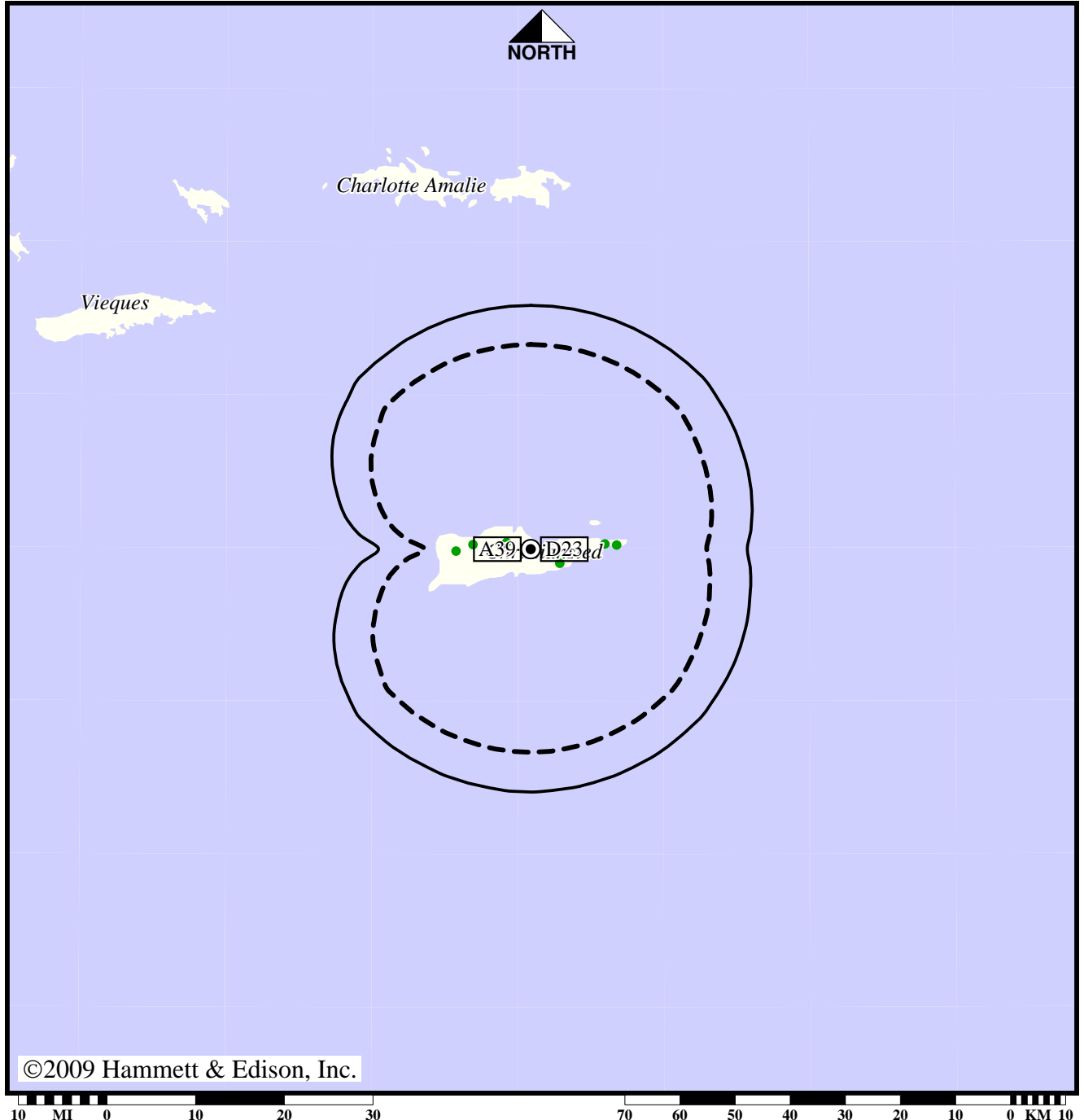


Station WCVI-TV • Analog Channel 39, DTV Channel 23 • Christiansted, VI

Expected Operation on June 13: Granted Construction Permit

Digital CP (solid): 0.659 kW ERP at 124 m HAAT
 vs. Analog (dashed): 26.7 kW ERP at 134 m HAAT

Market: U.S. Virgin Islands



©2009 Hammett & Edison, Inc.

- Coverage gained after DTV transition
- No symbol = no change in coverage

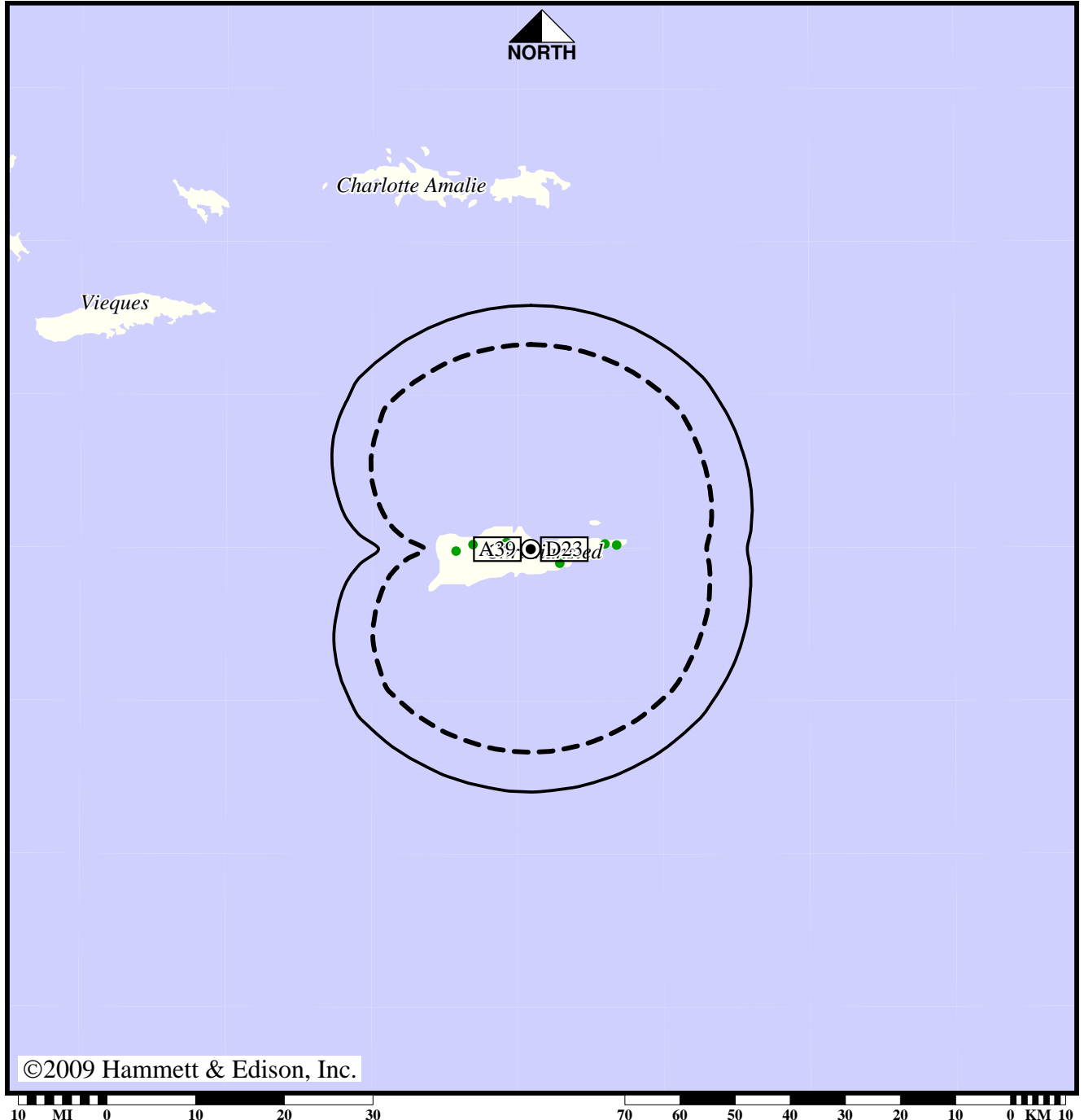
Analog service	49,684 persons
Digital service	50,167
Analog loss	0
Digital gain	483
Net gain	483

Station WCVI-TV • Analog Channel 39, DTV Channel 23 • Christiansted, VI

Approved Post-Transition Operation: Granted Construction Permit

Digital CP (solid): 0.659 kW ERP at 124 m HAAT
 vs. Analog (dashed): 26.7 kW ERP at 134 m HAAT

Market: U.S. Virgin Islands



©2009 Hammett & Edison, Inc.

- Coverage gained after DTV transition
- No symbol = no change in coverage

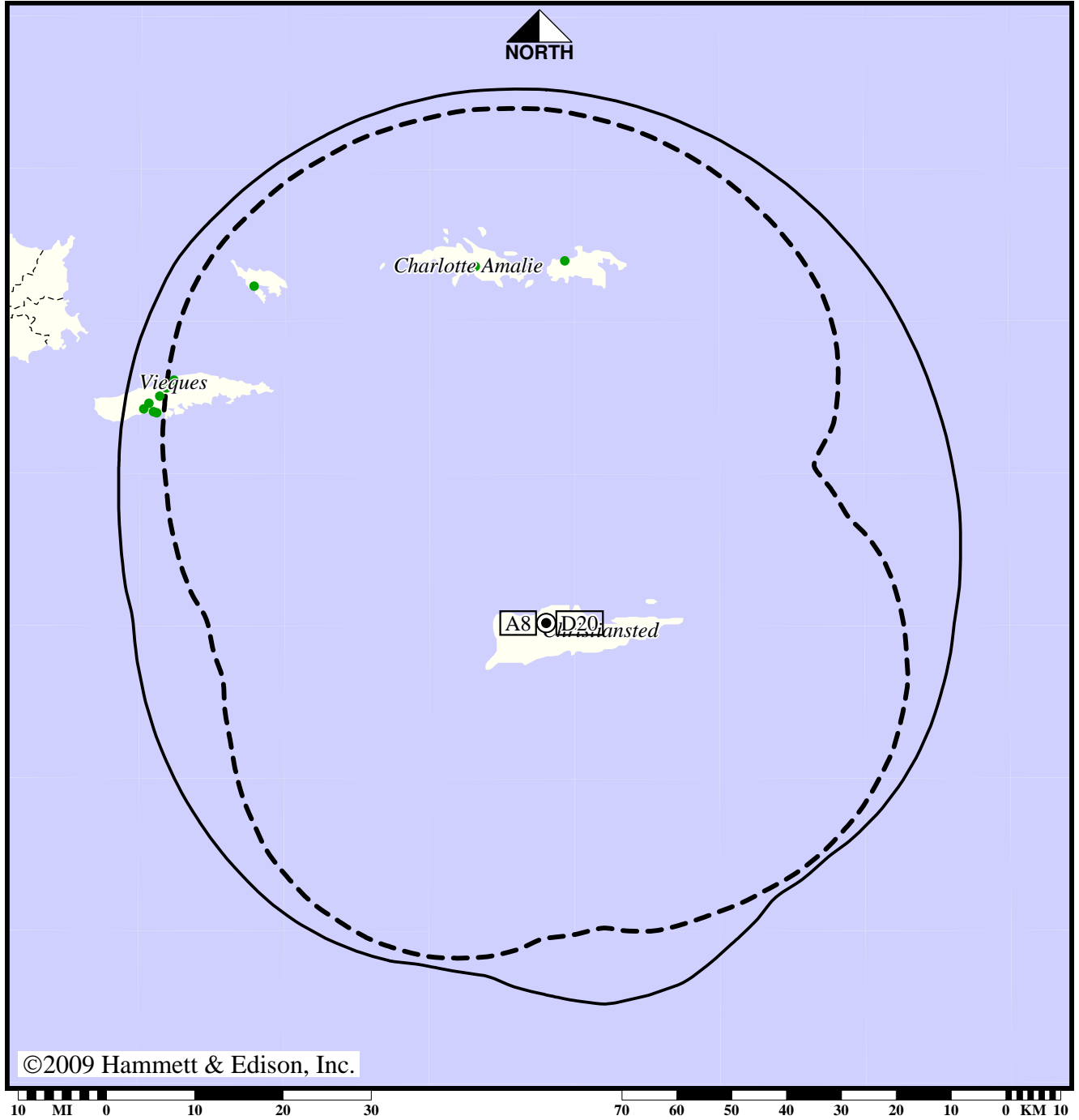
Analog service	49,684 persons
Digital service	50,167
Analog loss	0
Digital gain	483
Net gain	483

TV Station WSVI • Analog Channel 8, DTV Channel 20 • Christiansted, VI

Expected Operation on June 13: Granted Construction Permit

Digital CP (solid): 459 kW ERP at 305 m HAAT, Network: ABC
 vs. Analog (dashed): 200 kW ERP at 292 m HAAT, Network: ABC

Market: U.S. Virgin Islands



● Coverage gained after DTV transition
 No symbol = no change in coverage

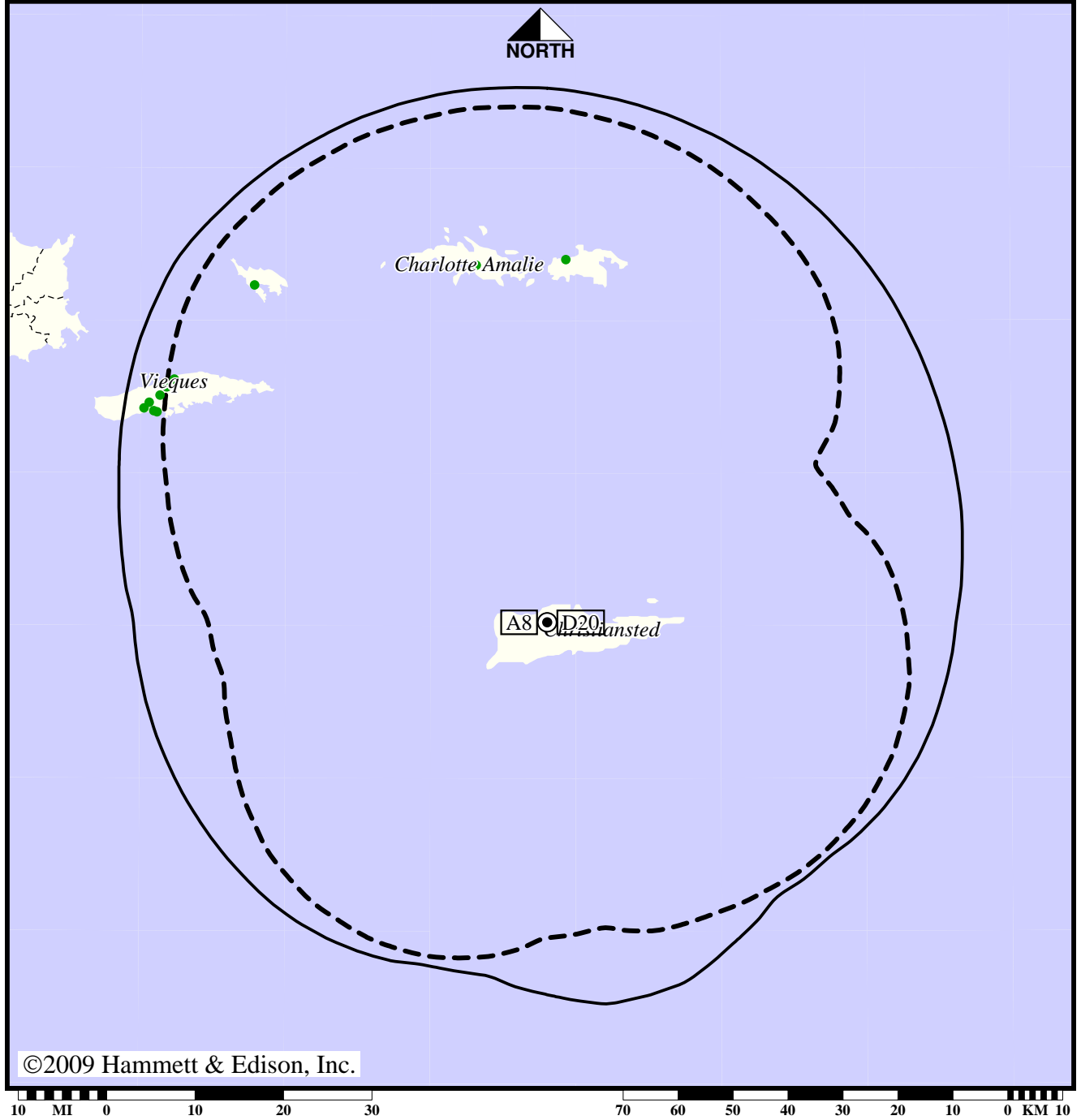
Analog service	98,870 persons
Digital service	111,021
Analog loss	0
Digital gain	12,151
Net gain	12,151

TV Station WSVI • Analog Channel 8, DTV Channel 20 • Christiansted, VI

Approved Post-Transition Operation: Granted Construction Permit

Digital CP (solid): 459 kW ERP at 305 m HAAT, Network: ABC
 vs. Analog (dashed): 200 kW ERP at 292 m HAAT, Network: ABC

Market: U.S. Virgin Islands



● Coverage gained after DTV transition
 No symbol = no change in coverage

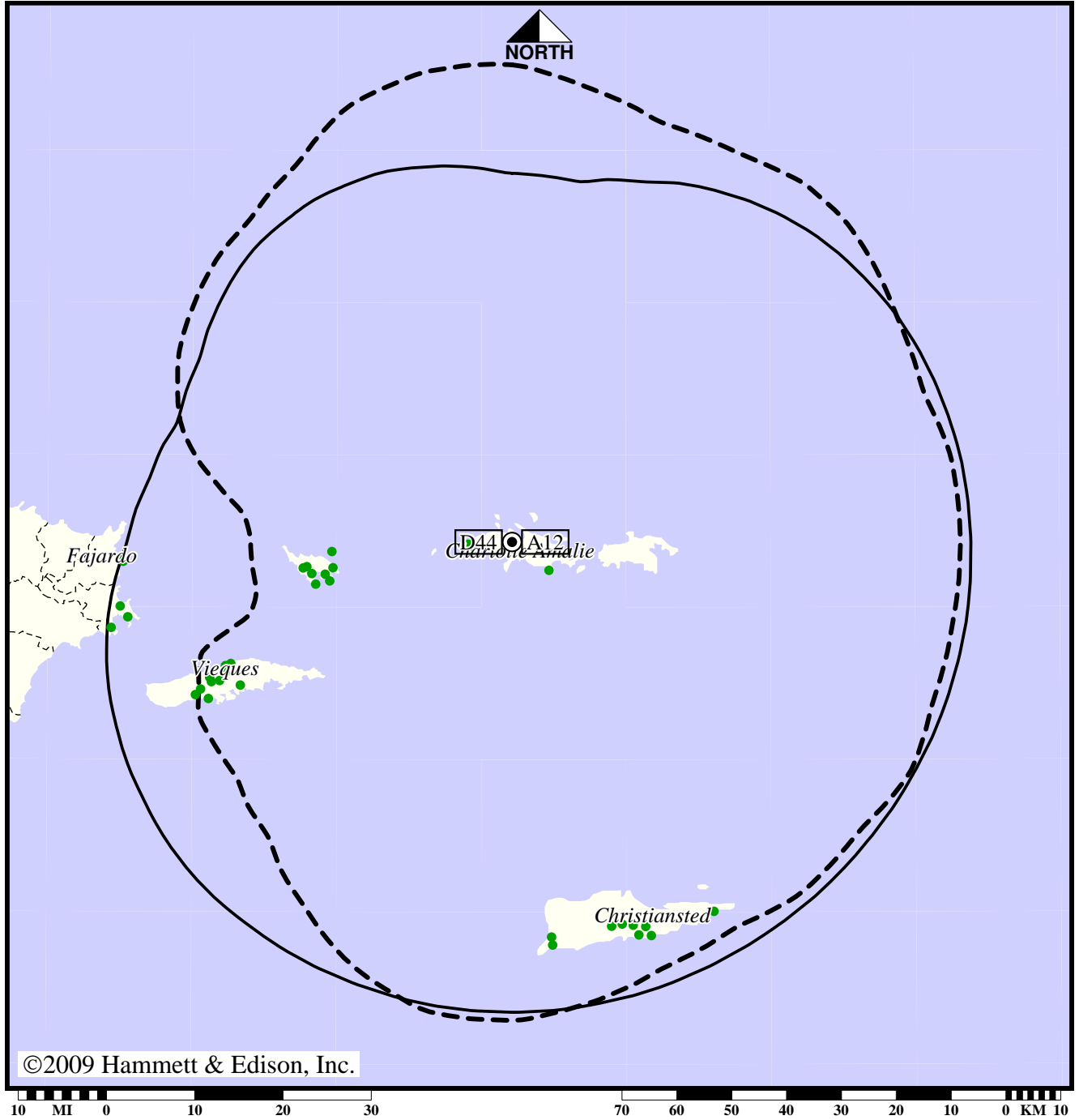
Analog service	98,870 persons
Digital service	111,021
Analog loss	0
Digital gain	12,151
Net gain	12,151

Station WTJX-TV • Analog Channel 12, DTV Channel 44 • Charlotte Amalie, VI

Expected Operation on June 13: Licensed

Digital License (solid): 50.0 kW ERP at 458 m HAAT, Network: PBS
 vs. Analog (dashed): 28.8 kW ERP at 451 m HAAT, Network: PBS

Market: U.S. Virgin Islands



©2009 Hammett & Edison, Inc.

● Coverage gained after DTV transition
 No symbol = no change in coverage

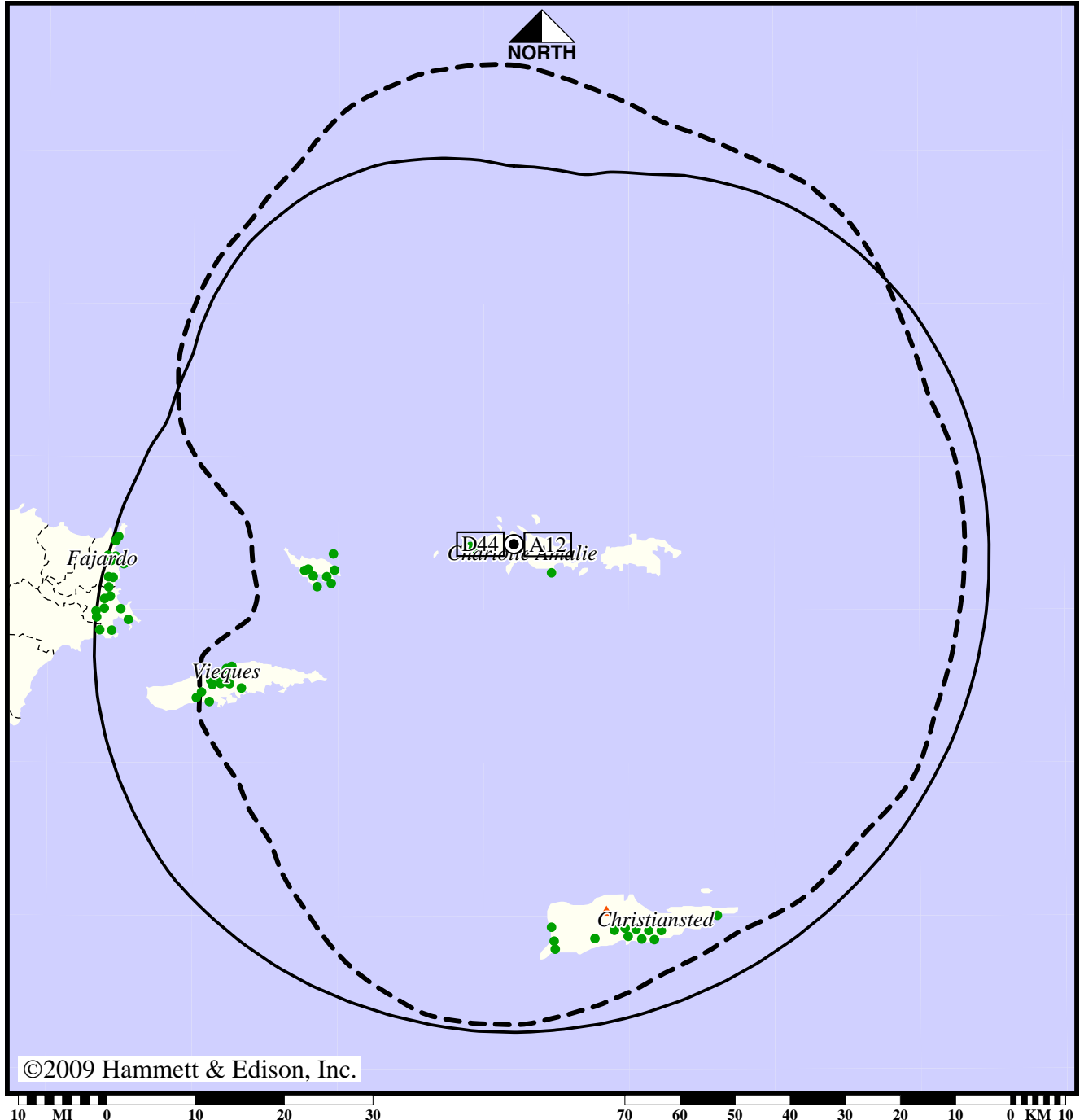
Analog service	73,852 persons
Digital service	101,289
Analog loss	0
Digital gain	27,437
Net gain	27,437

Station WTJX-TV • Analog Channel 12, DTV Channel 44 • Charlotte Amalie, VI

Approved Post-Transition Operation: Granted Construction Permit

Digital CP (solid): 50.0 kW ERP at 505 m HAAT, Network: PBS
 vs. Analog (dashed): 28.8 kW ERP at 451 m HAAT, Network: PBS

Market: U.S. Virgin Islands



©2009 Hammett & Edison, Inc.

- Coverage gained after DTV transition
- No symbol = no change in coverage
- ▲ Coverage lost after DTV transition

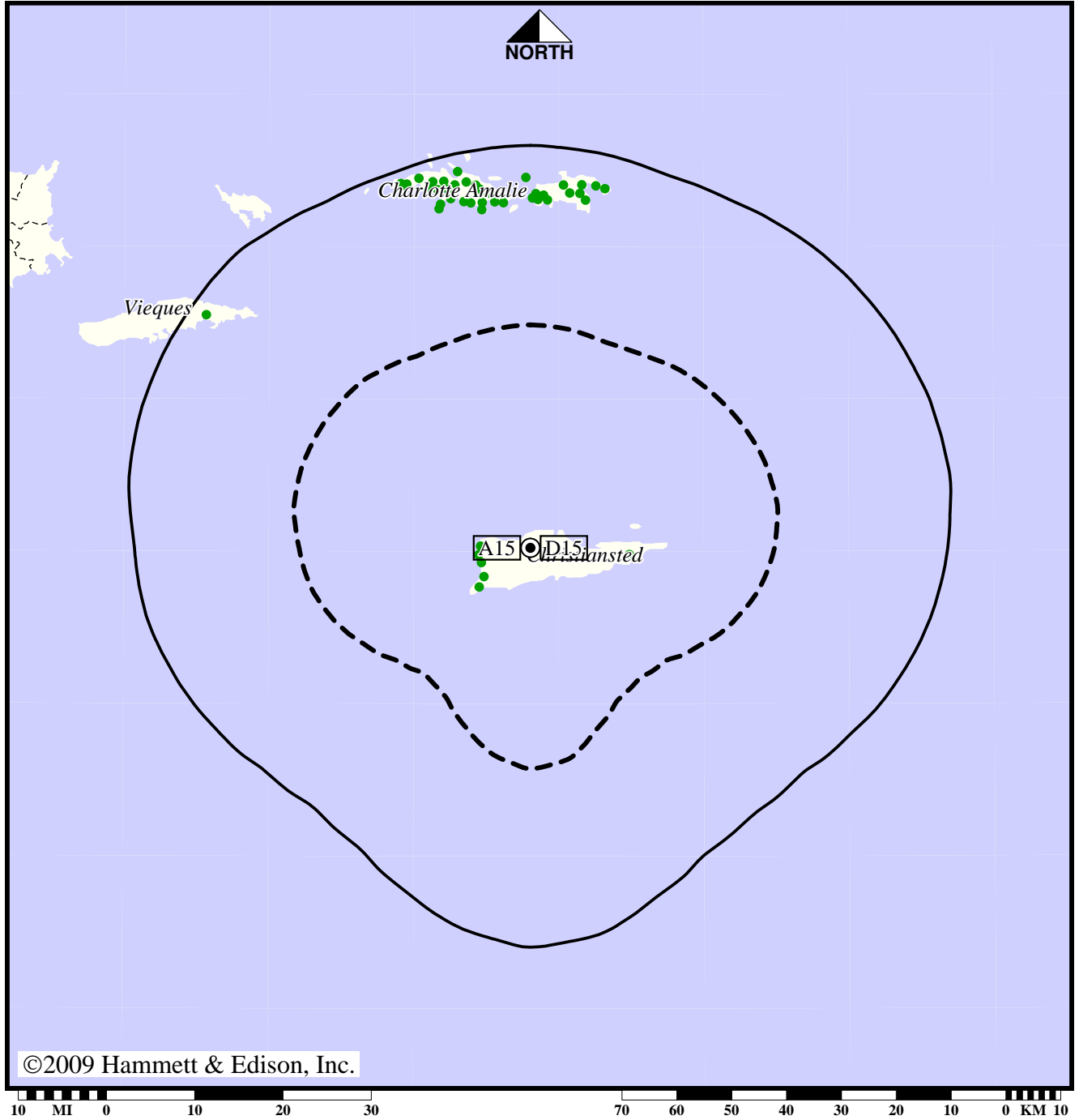
Analog service	73,852 persons
Digital service	131,586
Analog loss	588
Digital gain	58,322
Net gain	57,734

TV Station WVIF • Analog Channel 15, DTV Channel 15 • Christiansted, VI

Expected Operation on June 13: Appendix B Facility

Digital Appendix B (solid): 50.0 kW ERP at 296 m HAAT
 vs. Analog (dashed): 16.2 kW ERP at 296 m HAAT

Market: U.S. Virgin Islands



- Coverage gained after DTV transition
- No symbol = no change in coverage

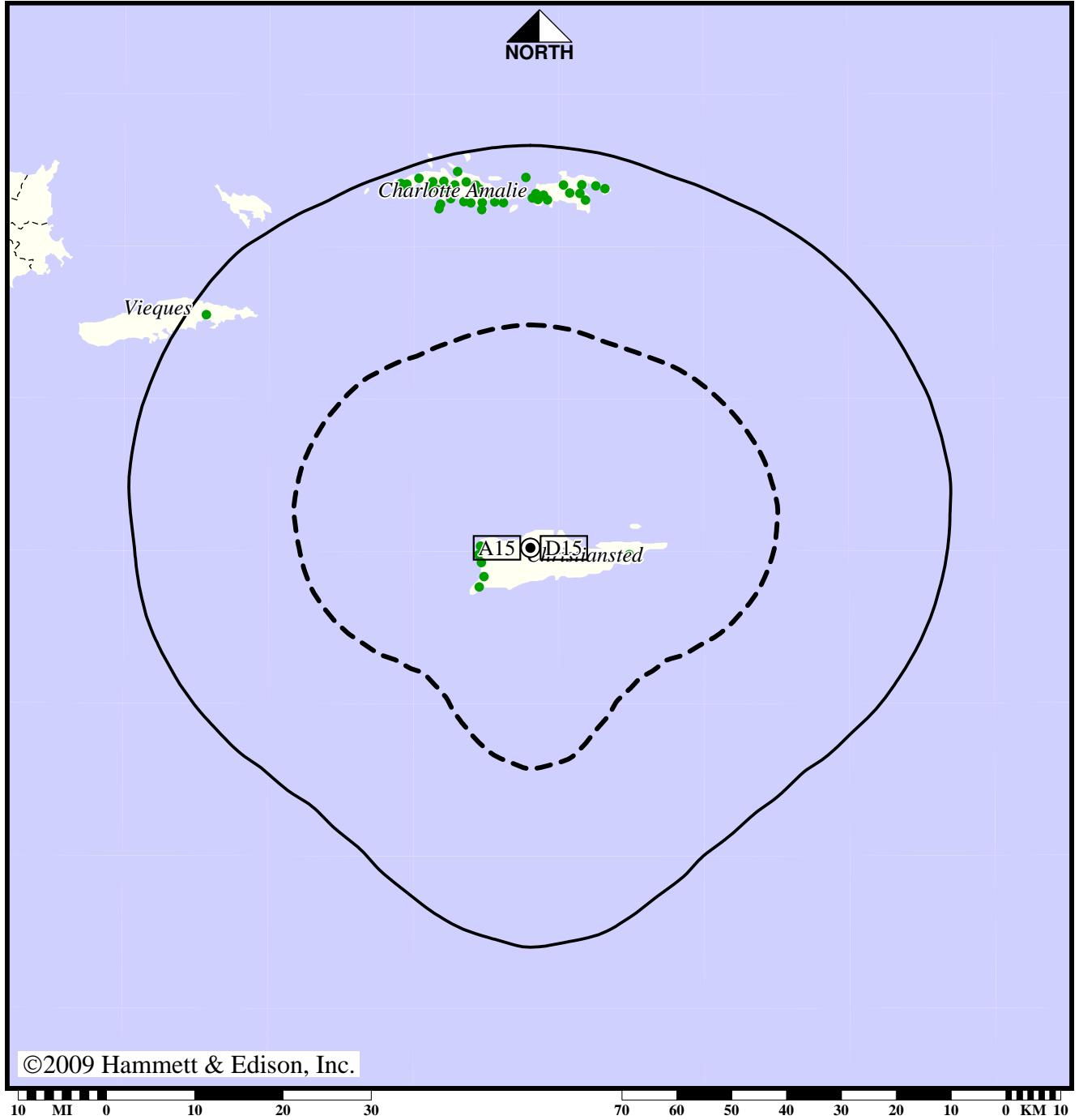
Analog service	49,307 persons
Digital service	95,437
Analog loss	0
Digital gain	46,130
Net gain	46,130

TV Station WVIF • Analog Channel 15, DTV Channel 15 • Christiansted, VI

Approved Post-Transition Operation: Appendix B Facility

Digital Appendix B (solid): 50.0 kW ERP at 296 m HAAT
 vs. Analog (dashed): 16.2 kW ERP at 296 m HAAT

Market: U.S. Virgin Islands



©2009 Hammett & Edison, Inc.



- Coverage gained after DTV transition
- No symbol = no change in coverage

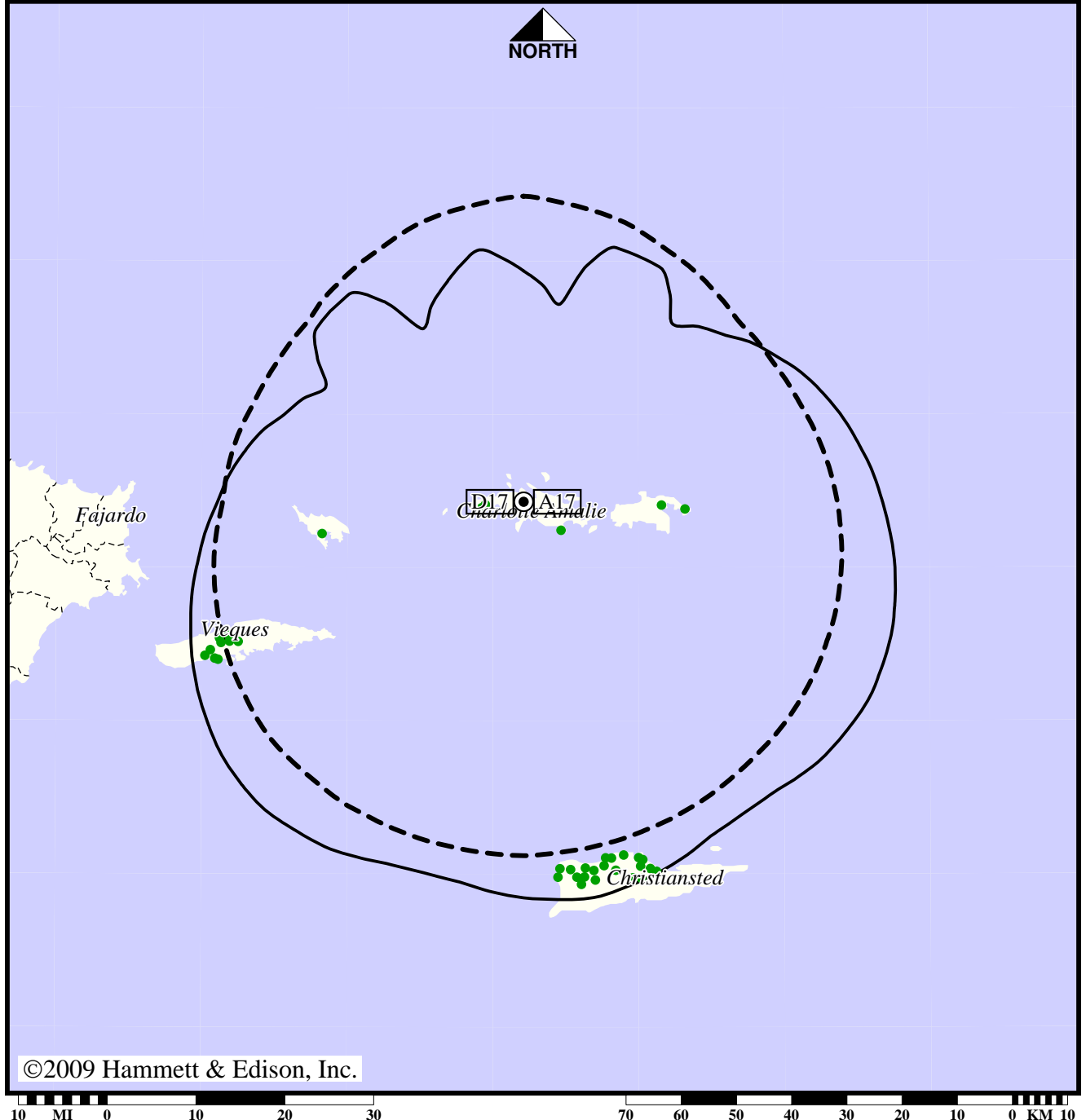
Analog service	49,307 persons
Digital service	95,437
Analog loss	0
Digital gain	46,130
Net gain	46,130

TV Station WVXF • Analog Channel 17, DTV Channel 17 • Charlotte Amalie, VI

Expected Operation on June 13: Granted Construction Permit

Digital CP (solid): 4.20 kW ERP at 454 m HAAT, Network: CBS
 vs. Analog (dashed): 75.9 kW ERP at 459 m HAAT, Network: CBS

Market: U.S. Virgin Islands



©2009 Hammett & Edison, Inc.

- Coverage gained after DTV transition
- No symbol = no change in coverage

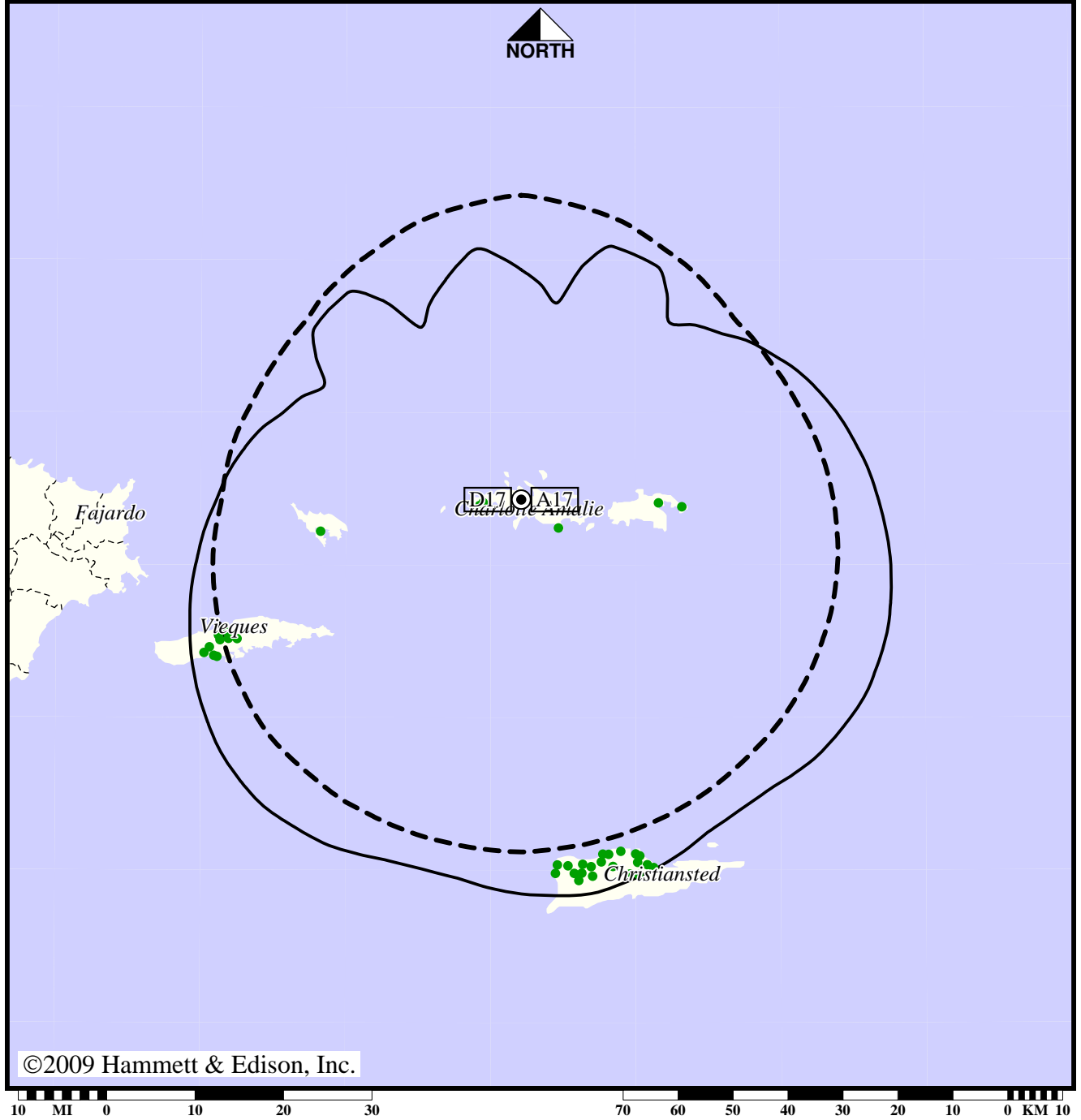
Analog service	59,142 persons
Digital service	74,217
Analog loss	0
Digital gain	15,075
Net gain	15,075

TV Station WVXF • Analog Channel 17, DTV Channel 17 • Charlotte Amalie, VI

Approved Post-Transition Operation: Granted Construction Permit

Digital CP (solid): 4.20 kW ERP at 454 m HAAT, Network: CBS
 vs. Analog (dashed): 75.9 kW ERP at 459 m HAAT, Network: CBS

Market: U.S. Virgin Islands



● Coverage gained after DTV transition
 No symbol = no change in coverage

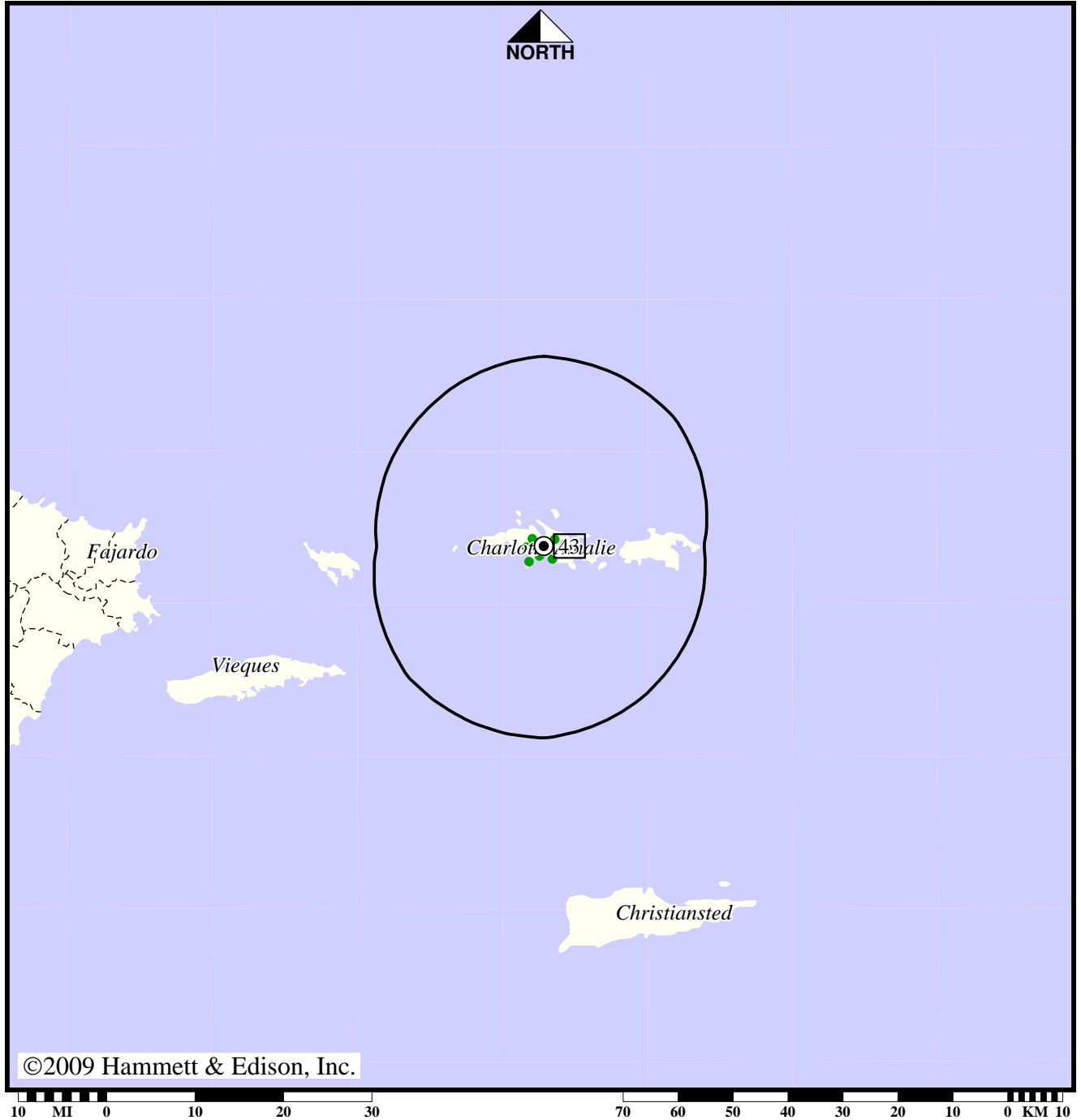
Analog service	59,142 persons
Digital service	74,217
Analog loss	0
Digital gain	15,075
Net gain	15,075

DTV Station WZVI • Channel 43 • Charlotte Amalie, VI

Expected Operation on June 13: Licensed

Digital License (solid): 1.40 kW ERP at 28 m HAAT, Network: ABC

Market: U.S. Virgin Islands



● Coverage gained after DTV transition

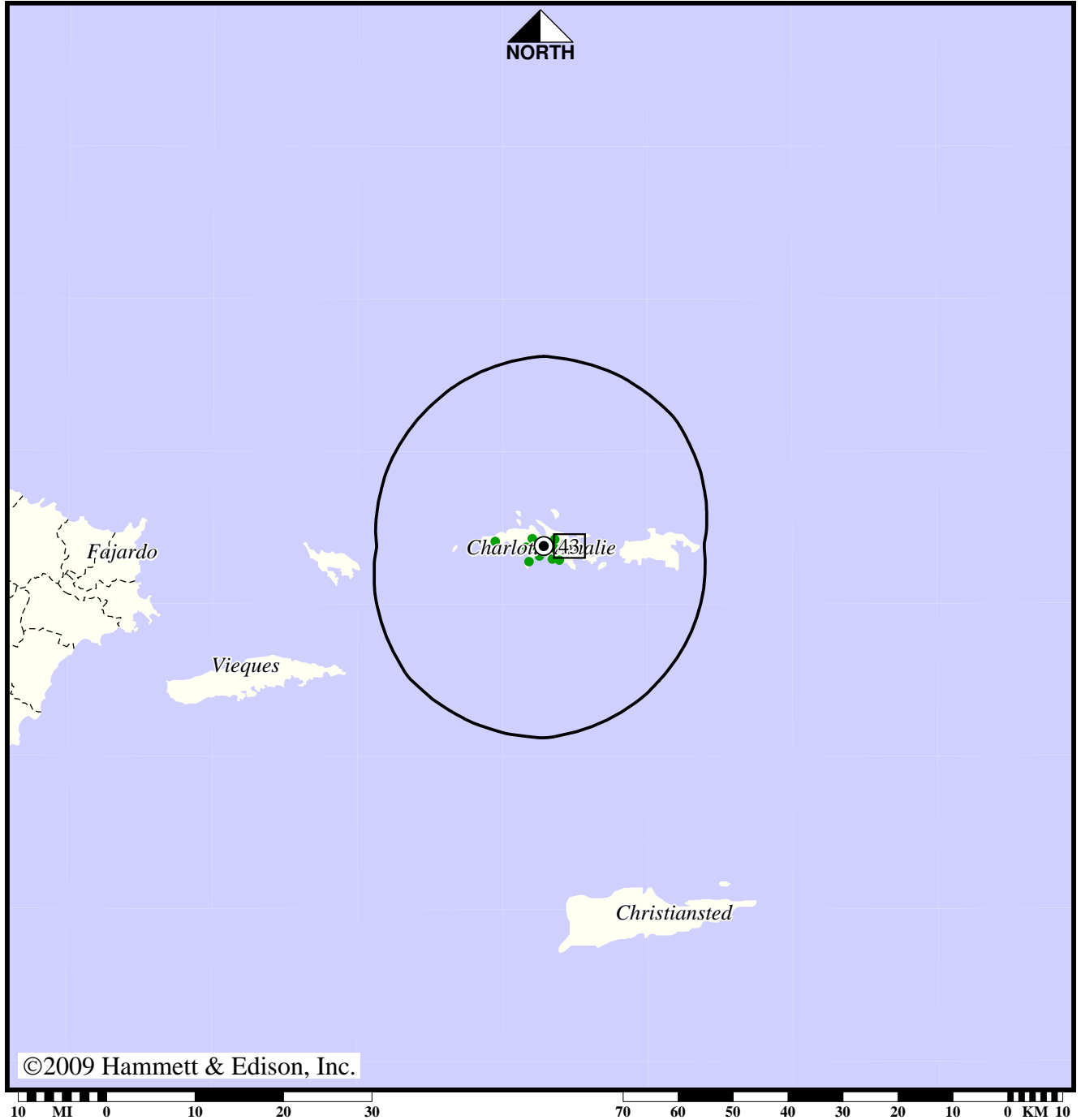
Digital service 24,914 persons

DTV Station WZVI • Channel 43 • Charlotte Amalie, VI

Approved Post-Transition Operation: Licensed

Digital License (solid): 1.40 kW ERP at 28 m HAAT, Network: ABC

Market: U.S. Virgin Islands



● Coverage gained after DTV transition

Digital service 28,812 persons