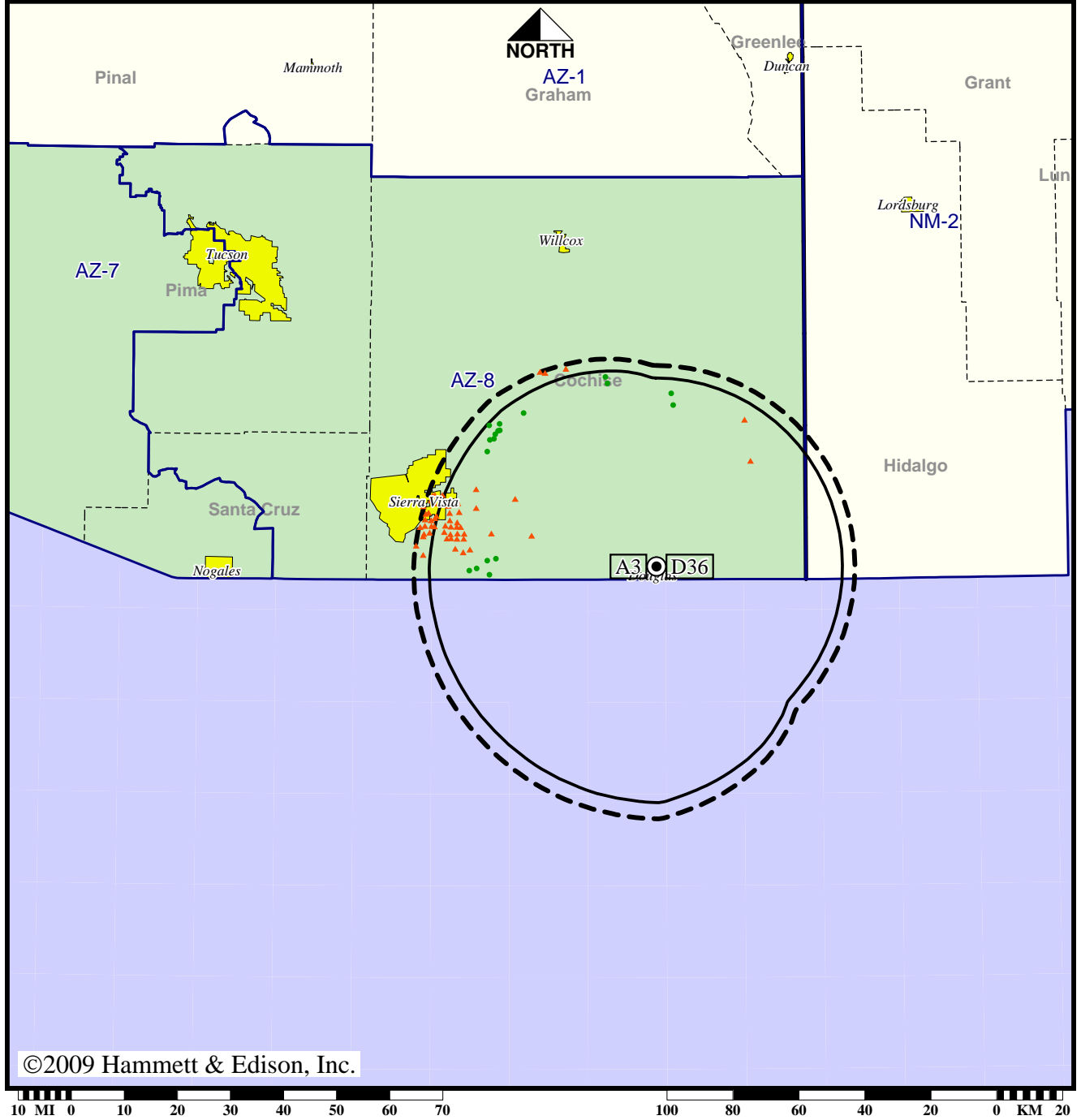


Station KFTU-TV • Analog Channel 3, DTV Channel 36 • Douglas, AZ

Expected Operation on June 13: Appendix B Facility

Digital Appendix B (solid): 1000 kW ERP at 9 m HAAT
 vs. Analog (dashed): 100 kW ERP at 9 m HAAT

Market: Tucson, AZ



©2009 Hammett & Edison, Inc.

- Coverage gained after DTV transition
- No symbol = no change in coverage
- ▲ Coverage lost after DTV transition

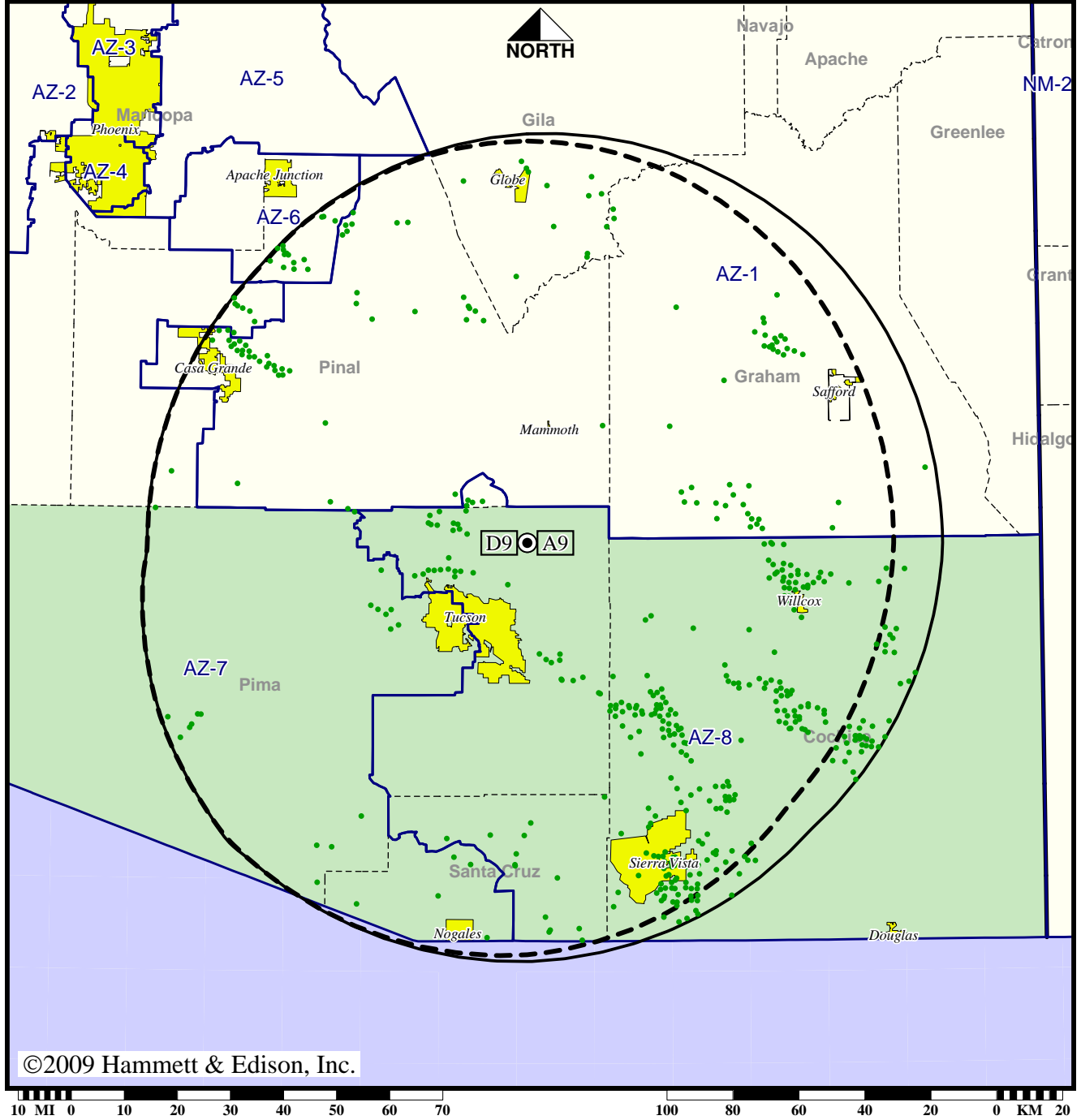
Analog service	57,378 persons
Digital service	36,478
Analog loss	22,447
Digital gain	1,547
Net gain	-20,900

TV Station KGUN • Analog Channel 9, DTV Channel 9 • Tucson, AZ

Expected Operation on June 13: Appendix B Facility

Digital Appendix B (solid): 9.23 kW ERP at 1134 m HAAT, Network: ABC
 vs. Analog (dashed): 110 kW ERP at 1140 m HAAT, Network: ABC

Market: Tucson, AZ



● Coverage gained after DTV transition
 No symbol = no change in coverage

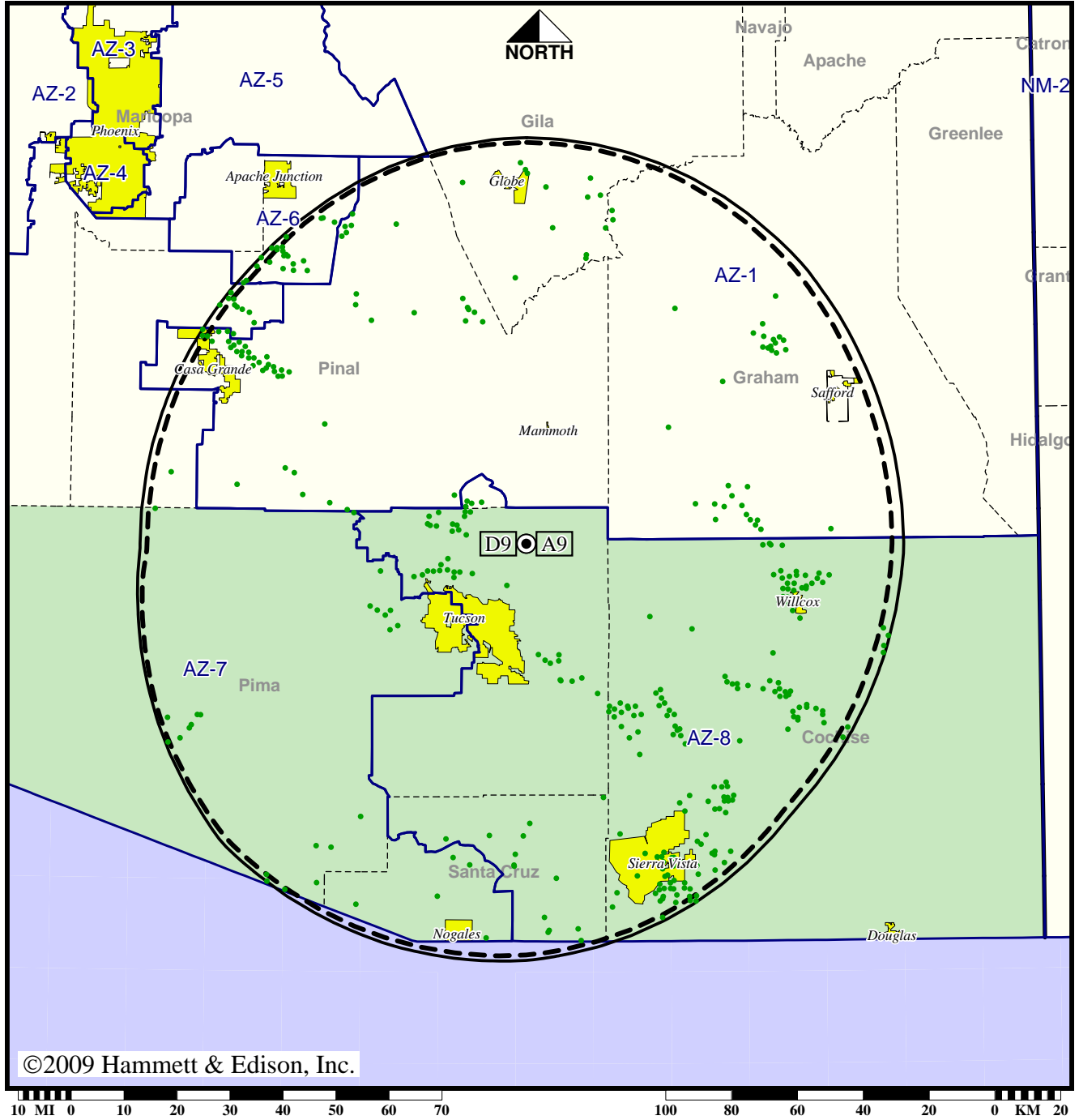
Analog service	858,313 persons
Digital service	968,411
Analog loss	0
Digital gain	110,098
Net gain	110,098

TV Station KGUN • Analog Channel 9, DTV Channel 9 • Tucson, AZ

Approved Post-Transition Operation: Granted Construction Permit

Digital CP (solid): 10.3 kW ERP at 1140 m HAAT, Network: ABC
 vs. Analog (dashed): 110 kW ERP at 1140 m HAAT, Network: ABC

Market: Tucson, AZ



©2009 Hammett & Edison, Inc.

● Coverage gained after DTV transition
 No symbol = no change in coverage

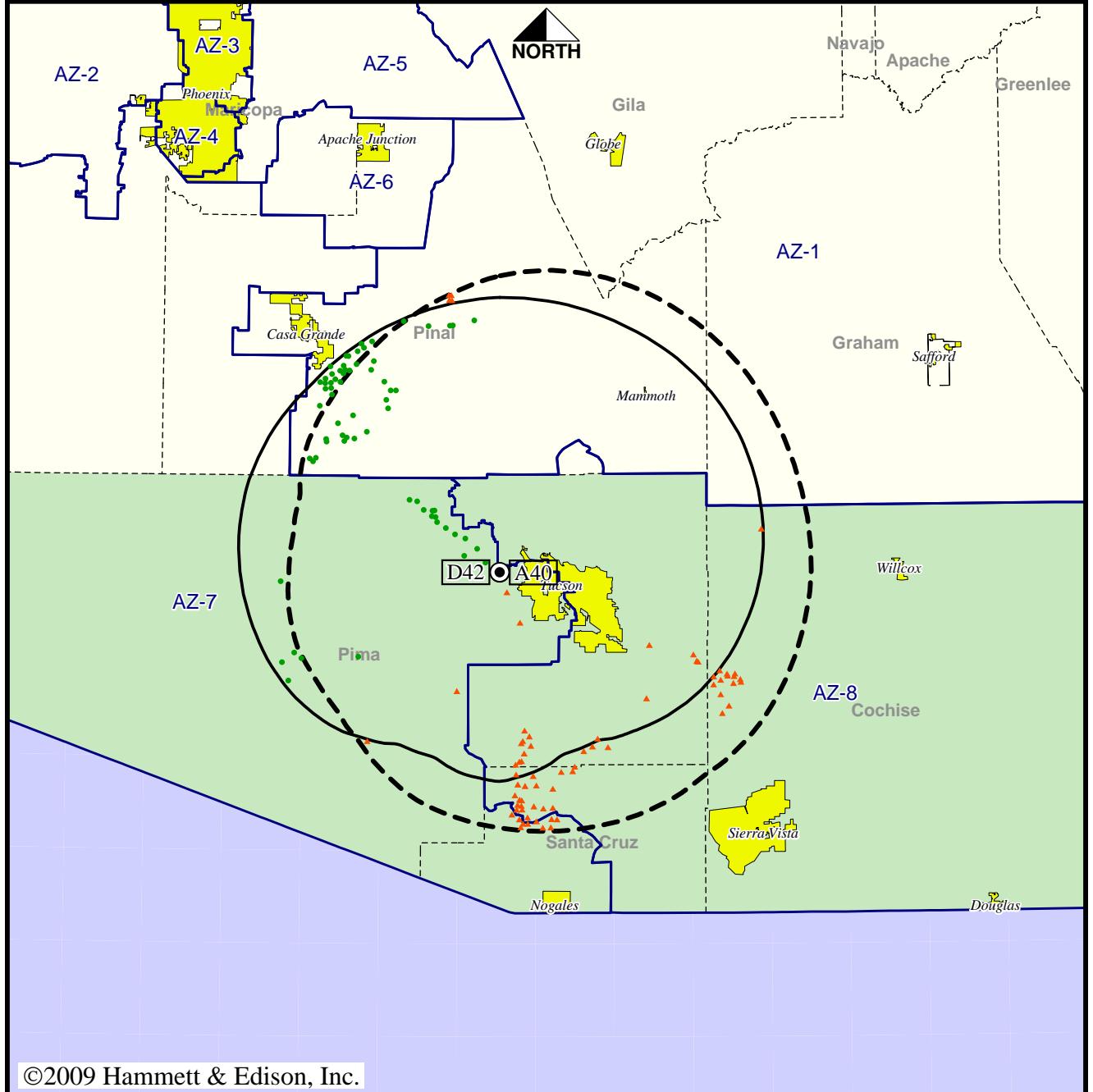
Analog service	858,313 persons
Digital service	960,250
Analog loss	0
Digital gain	101,937
Net gain	101,937

TV Station KHRR • Analog Channel 40, DTV Channel 42 • Tucson, AZ

Expected Operation on June 13: Special Temporary Authorization

Digital STA (solid): 12.7 kW ERP at 598 m HAAT
 vs. Analog (dashed): 1550 kW ERP at 619 m HAAT

Market: Tucson, AZ



©2009 Hammett & Edison, Inc.



- Coverage gained after DTV transition
- No symbol = no change in coverage
- ▲ Coverage lost after DTV transition

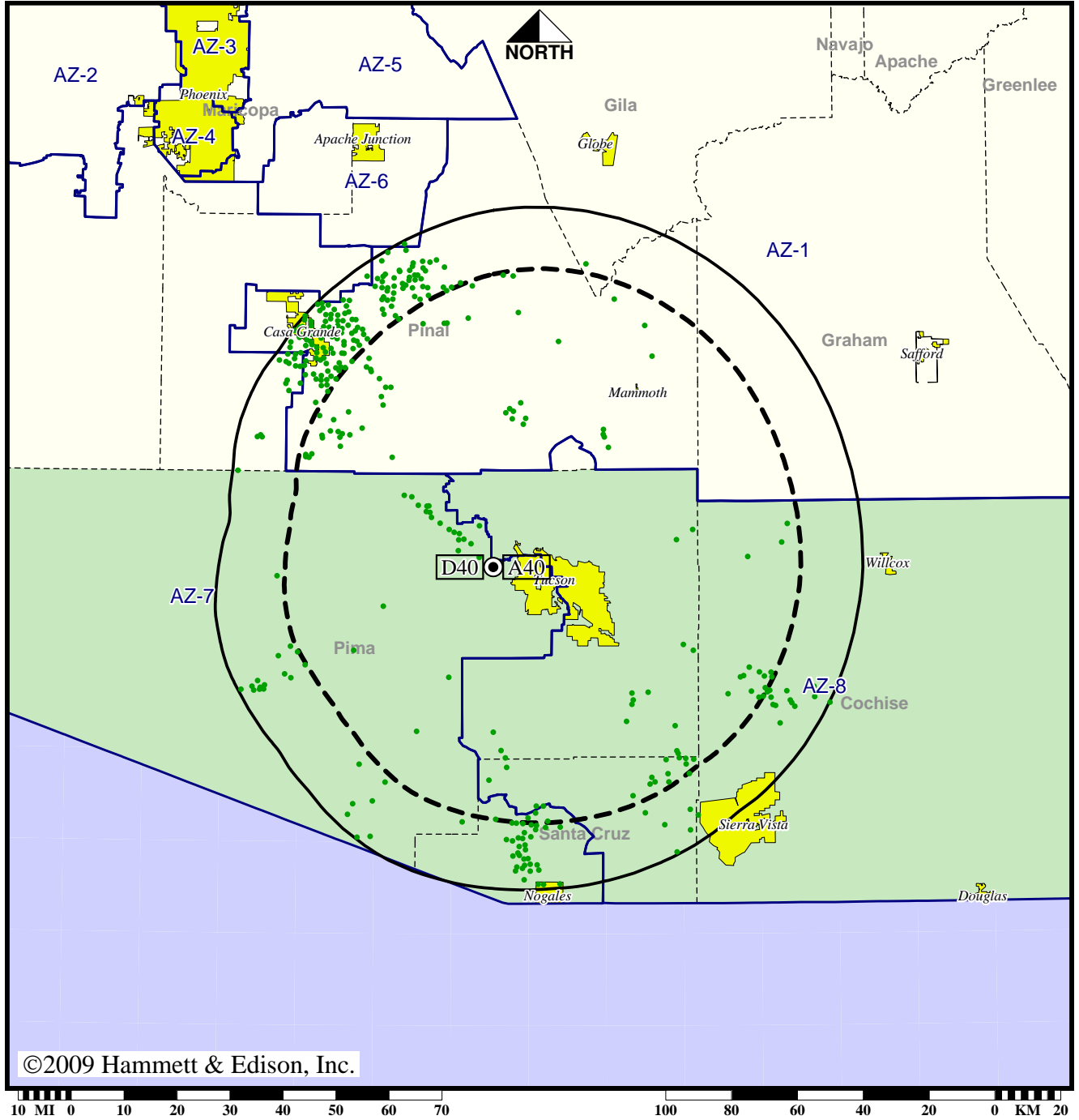
Analog service	845,275 persons
Digital service	851,245
Analog loss	6,581
Digital gain	12,551
Net gain	5,970

TV Station KHRR • Analog Channel 40, DTV Channel 40 • Tucson, AZ

Approved Post-Transition Operation: Granted Construction Permit

Digital CP (solid): 396 kW ERP at 621 m HAAT
 vs. Analog (dashed): 1550 kW ERP at 619 m HAAT

Market: Tucson, AZ



©2009 Hammett & Edison, Inc.

● Coverage gained after DTV transition
 No symbol = no change in coverage

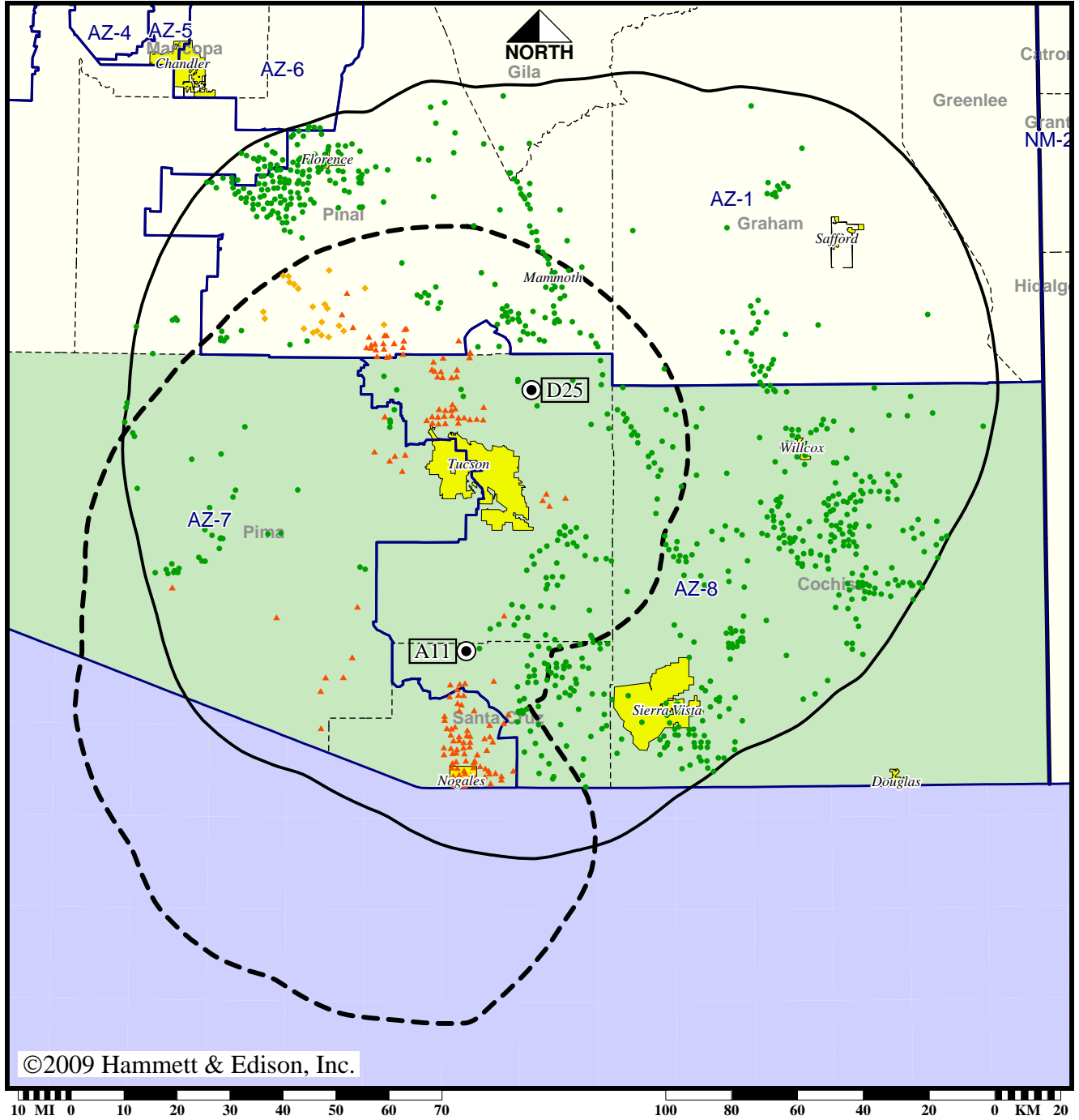
Analog service	845,275 persons
Digital service	925,921
Analog loss	0
Digital gain	80,646
Net gain	80,646

Station KMSB-TV • Analog Channel 11, DTV Channel 25 • Tucson, AZ

Expected Operation on June 13: Licensed

Digital License (solid): 480 kW ERP at 1123 m HAAT, Network: Fox
 vs. Analog (dashed): 316 kW ERP at 507 m HAAT, Network: Fox

Market: Tucson, AZ



©2009 Hammett & Edison, Inc.

- Coverage gained after DTV transition
- No symbol = no change in coverage
- ◆ Coverage lost but still served by same network
- ▲ Coverage lost and no other service by same network

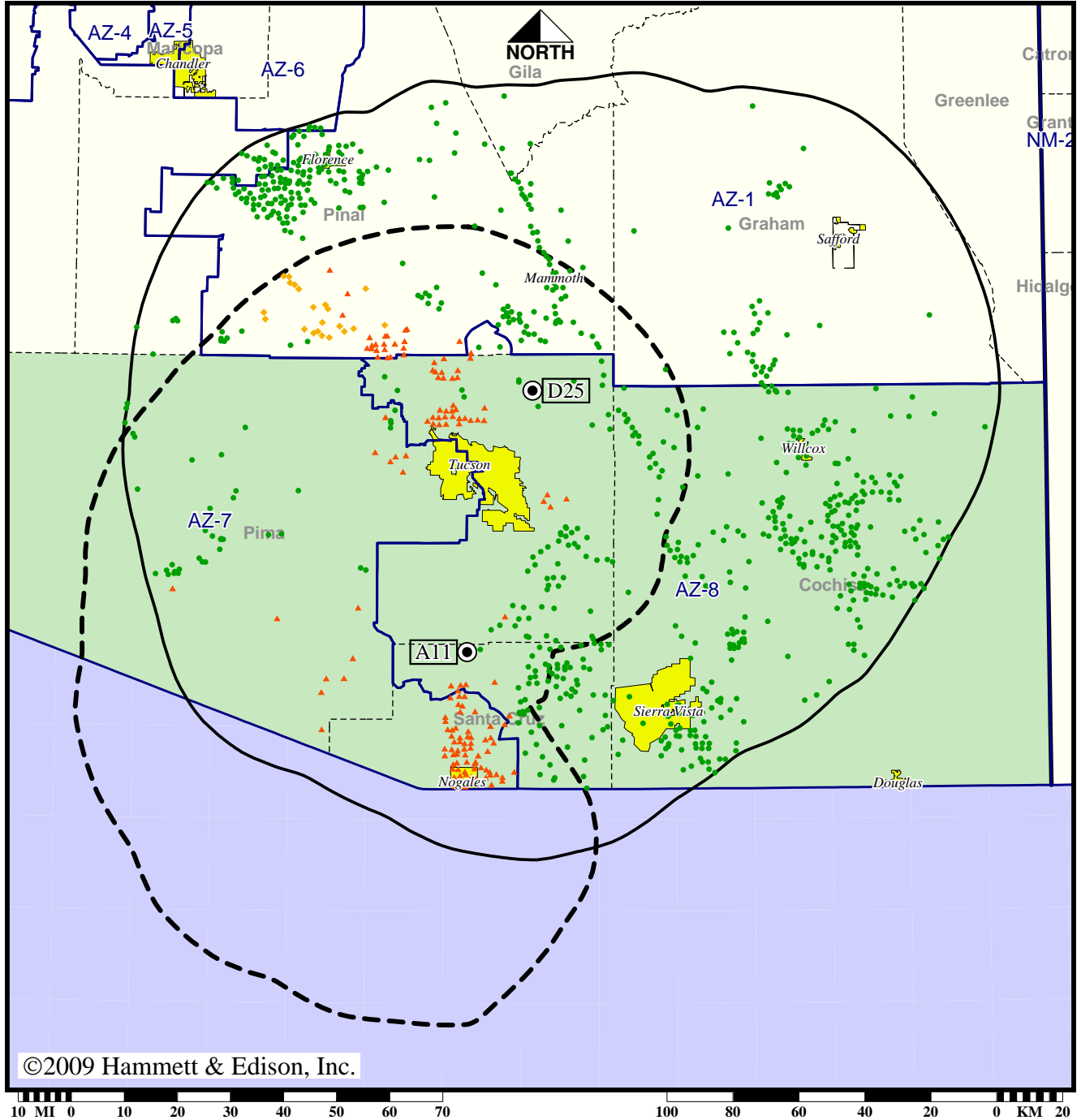
Analog service	856,651 persons
Digital service	869,421
Analog loss	85,128
Digital gain	97,898
Net gain	12,770

Station KMSB-TV • Analog Channel 11, DTV Channel 25 • Tucson, AZ

Approved Post-Transition Operation: Licensed

Digital License (solid): 480 kW ERP at 1123 m HAAT, Network: Fox
 vs. Analog (dashed): 316 kW ERP at 507 m HAAT, Network: Fox

Market: Tucson, AZ



- Coverage gained after DTV transition
- No symbol = no change in coverage
- ◆ Coverage lost but still served by same network
- ▲ Coverage lost and no other service by same network

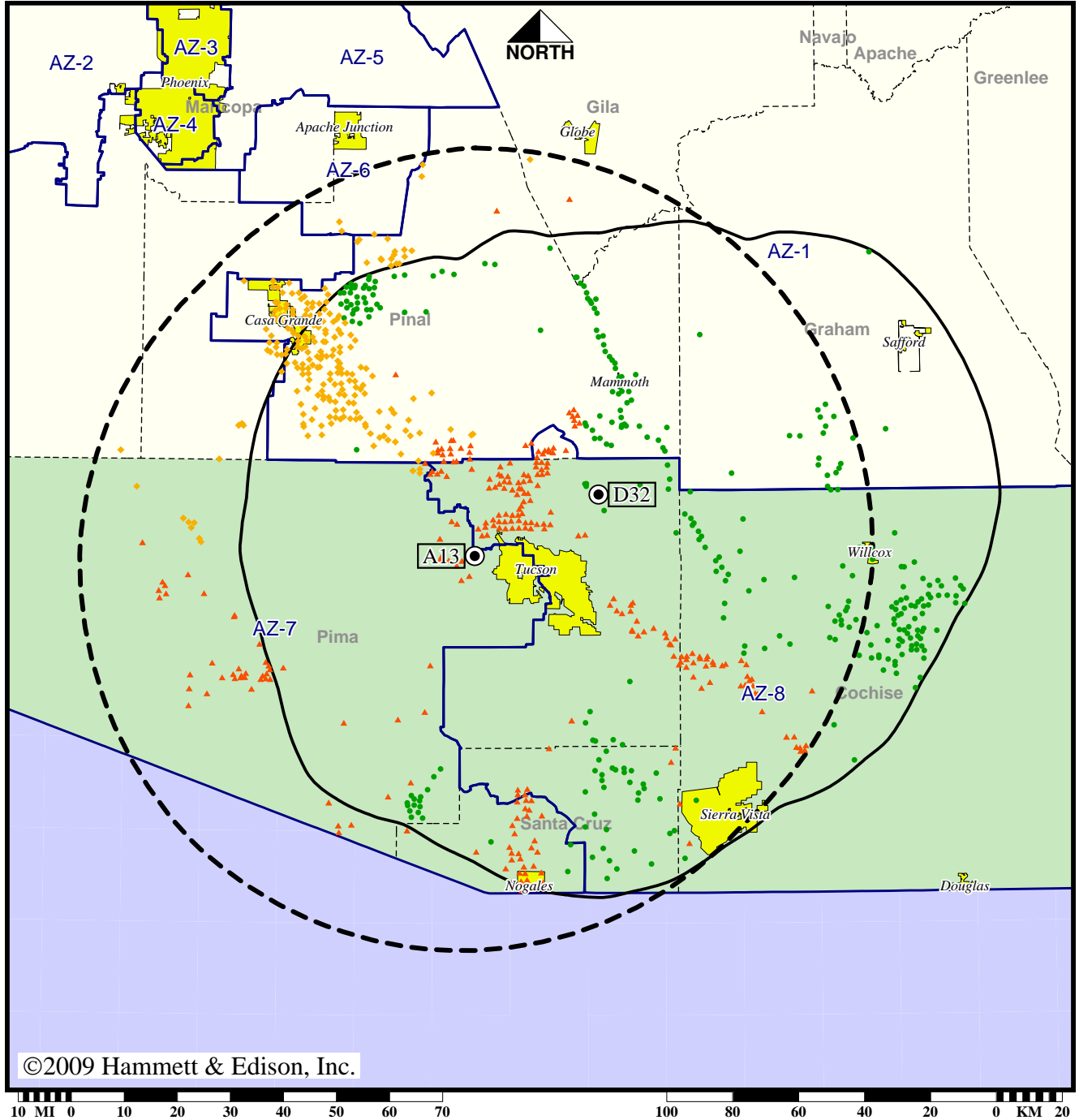
Analog service	856,651 persons
Digital service	869,421
Analog loss	85,128
Digital gain	97,898
Net gain	12,770

Station KOLD-TV • Analog Channel 13, DTV Channel 32 • Tucson, AZ

Expected Operation on June 13: Licensed

Digital License (solid): 108 kW ERP at 1123 m HAAT, Network: CBS
 vs. Analog (dashed): 302 kW ERP at 622 m HAAT, Network: CBS

Market: Tucson, AZ



- Coverage gained after DTV transition
- No symbol = no change in coverage
- ◆ Coverage lost but still served by same network
- ▲ Coverage lost and no other service by same network

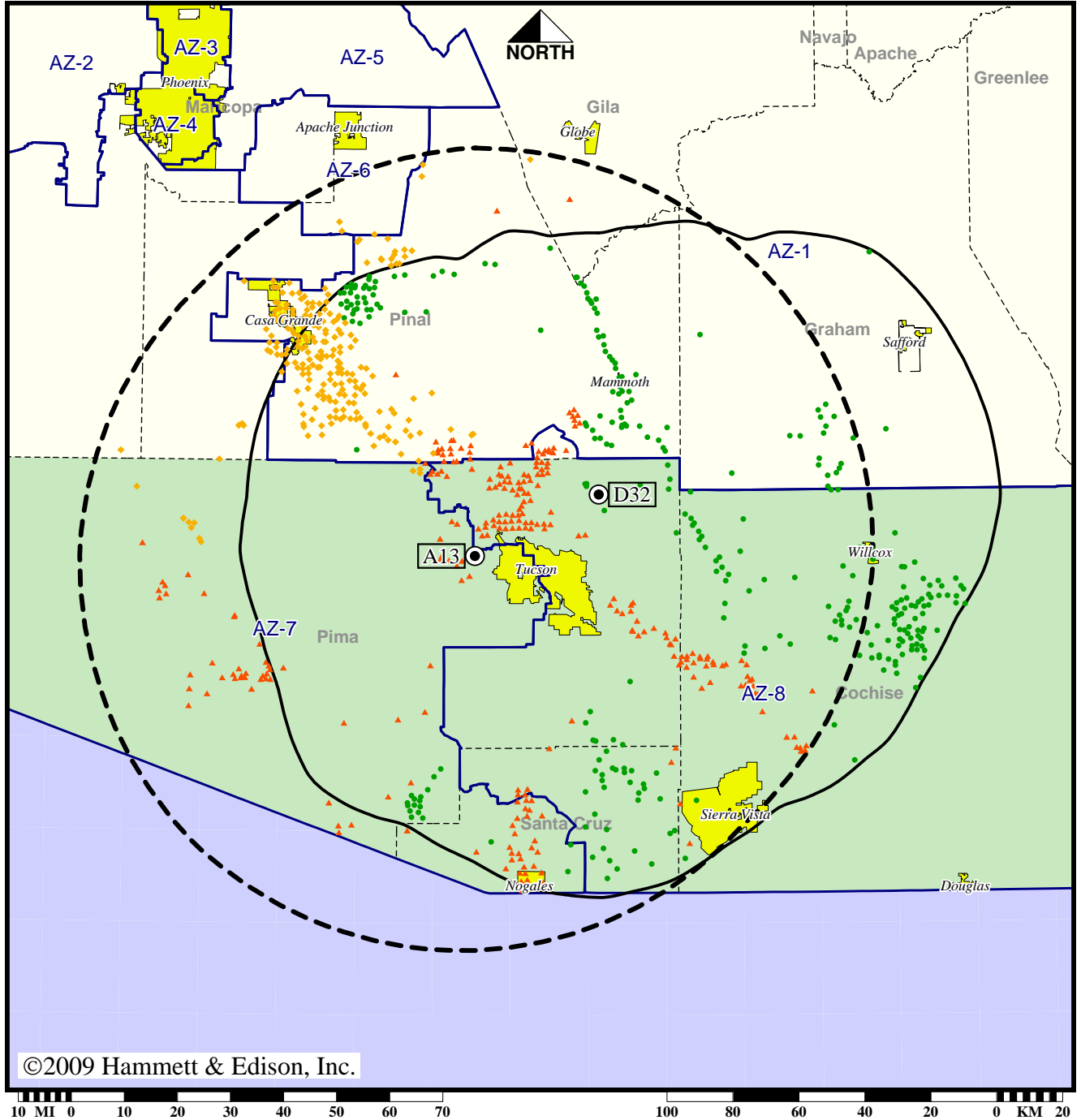
Analog service	936,623 persons
Digital service	788,703
Analog loss	177,711
Digital gain	29,791
Net gain	-147,920

Station KOLD-TV • Analog Channel 13, DTV Channel 32 • Tucson, AZ

Approved Post-Transition Operation: Licensed

Digital License (solid): 108 kW ERP at 1123 m HAAT, Network: CBS
 vs. Analog (dashed): 302 kW ERP at 622 m HAAT, Network: CBS

Market: Tucson, AZ



- Coverage gained after DTV transition
- No symbol = no change in coverage
- ◆ Coverage lost but still served by same network
- ▲ Coverage lost and no other service by same network

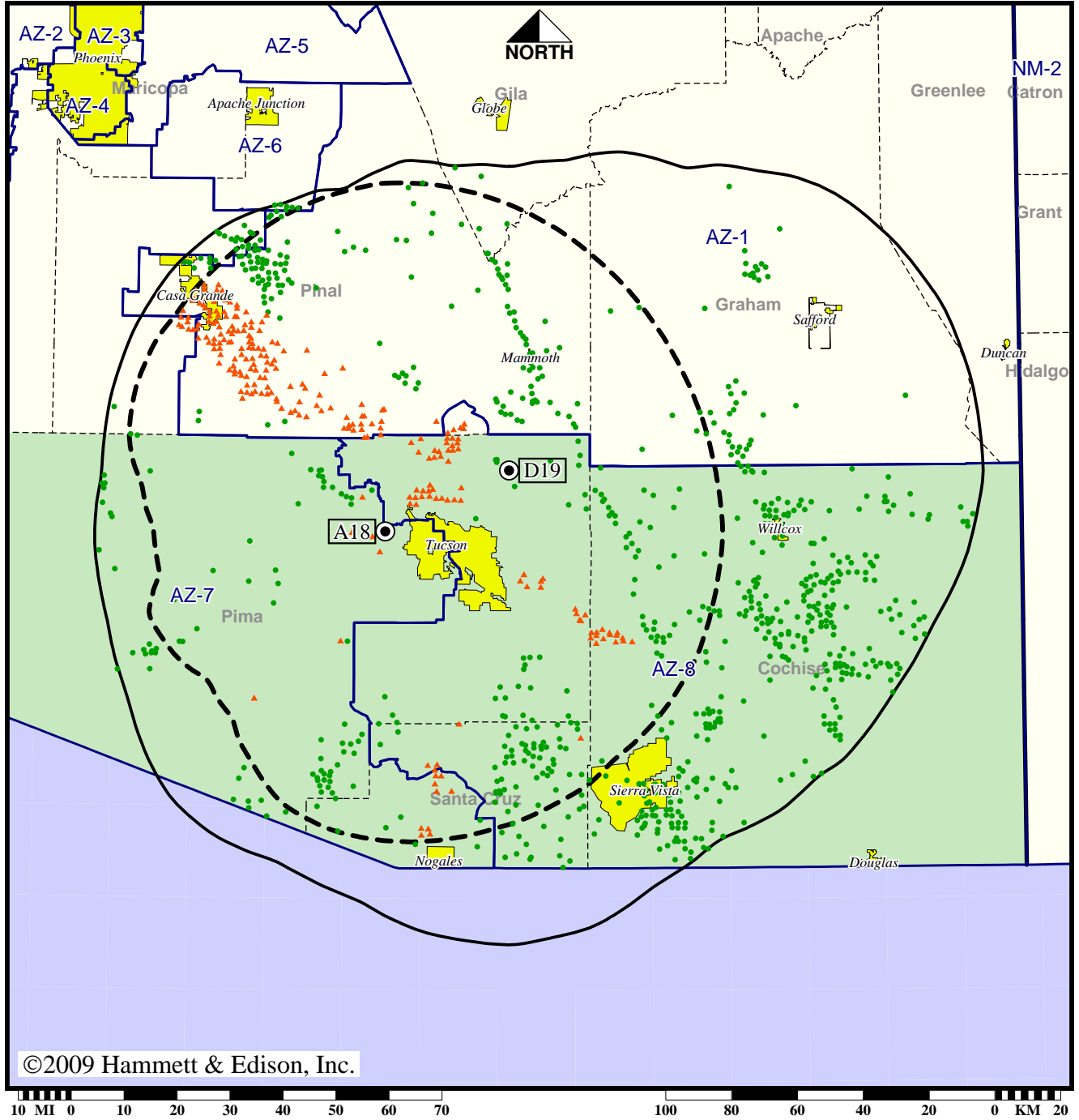
Analog service	936,623 persons
Digital service	788,703
Analog loss	177,711
Digital gain	29,791
Net gain	-147,920

Station KTTU-TV • Analog Channel 18, DTV Channel 19 • Tucson, AZ

Expected Operation on June 13: Licensed

Digital License (solid): 480 kW ERP at 1123 m HAAT
 vs. Analog (dashed): 2510 kW ERP at 600 m HAAT

Market: Tucson, AZ



©2009 Hammett & Edison, Inc.

- Coverage gained after DTV transition
- No symbol = no change in coverage
- ▲ Coverage lost after DTV transition

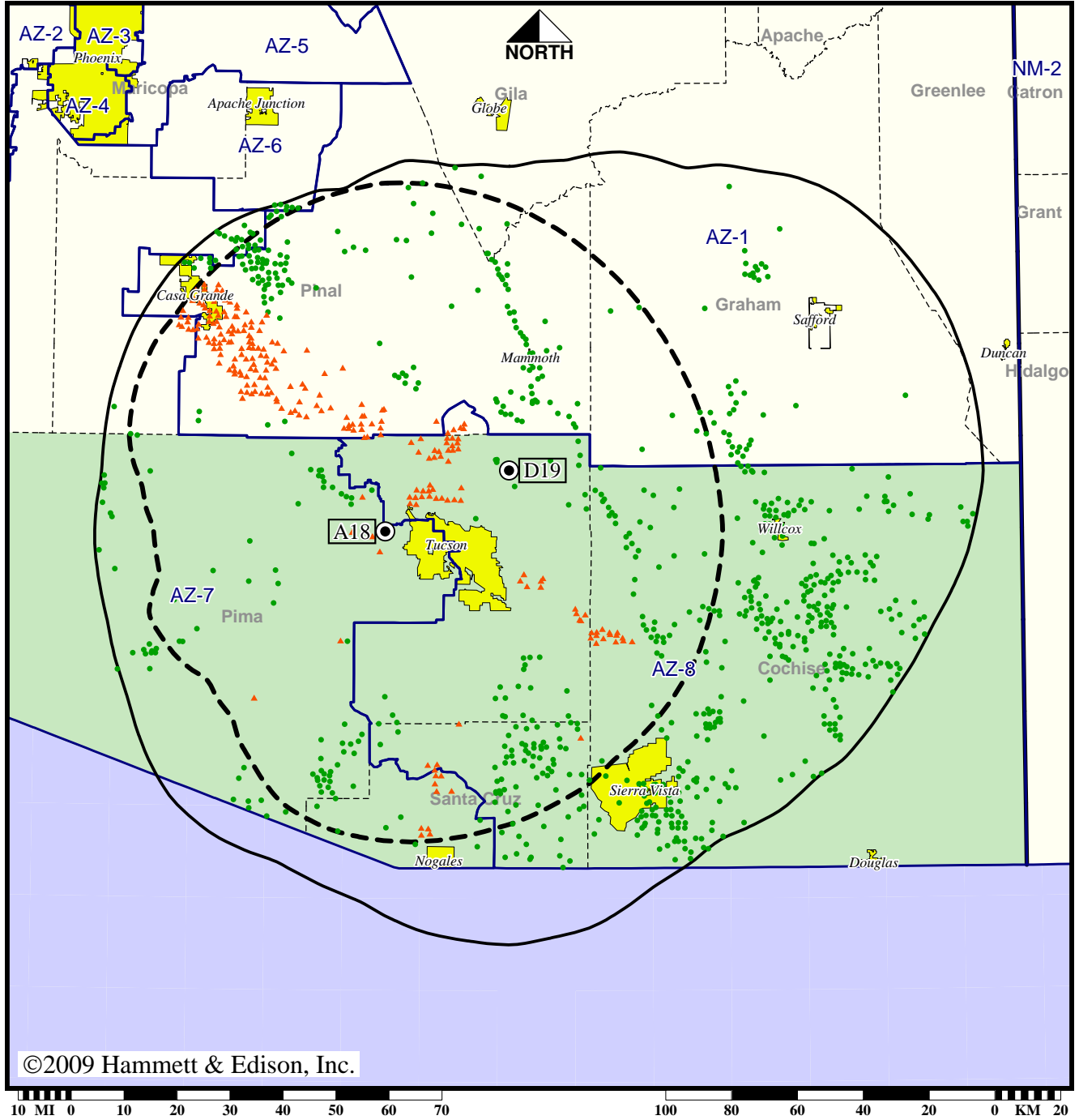
Analog service	897,725 persons
Digital service	899,592
Analog loss	95,598
Digital gain	97,465
Net gain	1,867

Station KTTU-TV • Analog Channel 18, DTV Channel 19 • Tucson, AZ

Approved Post-Transition Operation: Licensed

Digital License (solid): 480 kW ERP at 1123 m HAAT
 vs. Analog (dashed): 2510 kW ERP at 600 m HAAT

Market: Tucson, AZ



©2009 Hammett & Edison, Inc.

- Coverage gained after DTV transition
- No symbol = no change in coverage
- ▲ Coverage lost after DTV transition

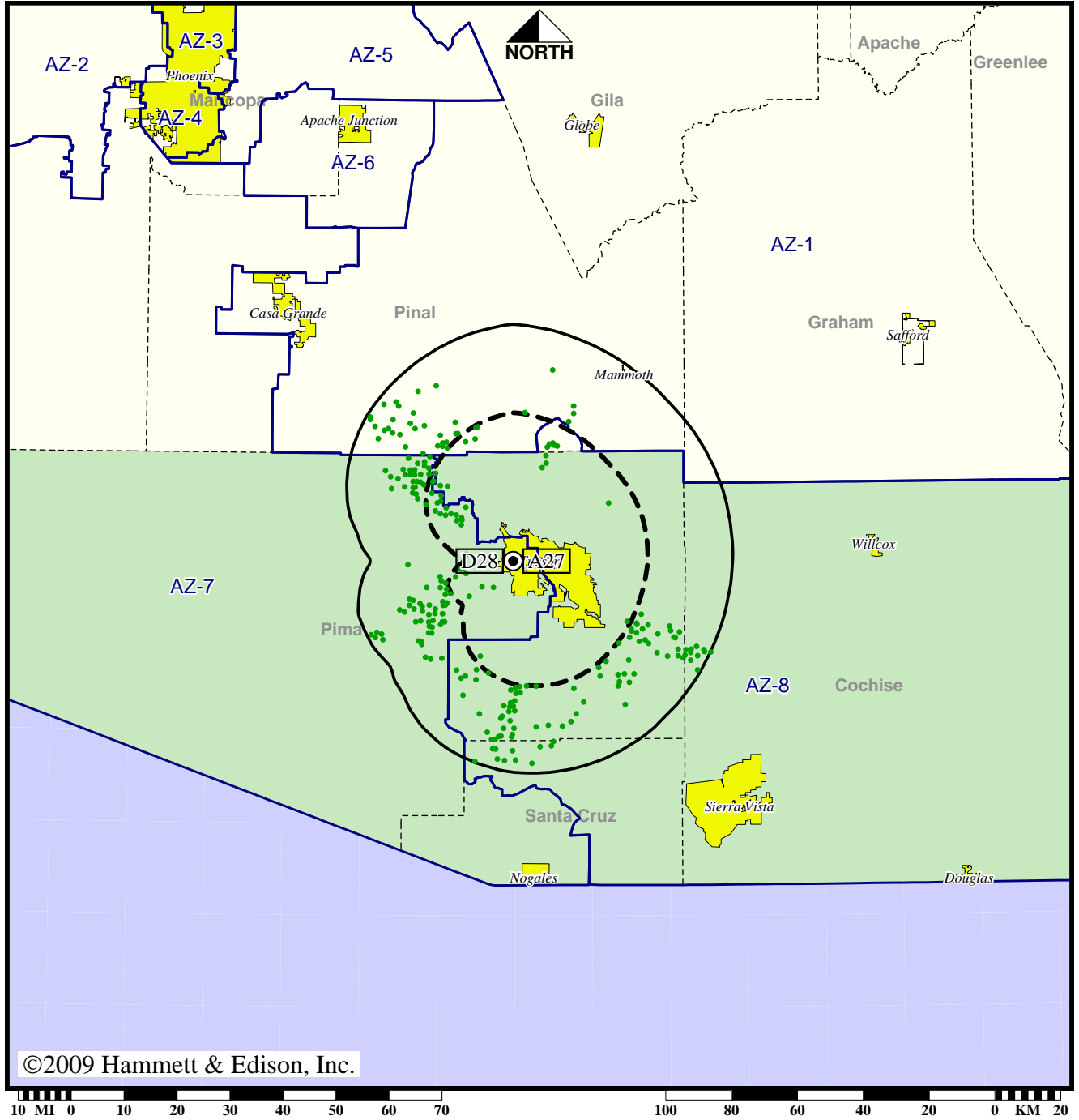
Analog service	897,725 persons
Digital service	899,592
Analog loss	95,598
Digital gain	97,465
Net gain	1,867

Station KUAS-TV • Analog Channel 27, DTV Channel 28 • Tucson, AZ

Expected Operation on June 13: Licensed

Digital License (solid): 50.0 kW ERP at 178 m HAAT, Network: PBS
 vs. Analog (dashed): 30.2 kW ERP at 178 m HAAT, Network: PBS

Market: Tucson, AZ



©2009 Hammett & Edison, Inc.

● Coverage gained after DTV transition
 No symbol = no change in coverage

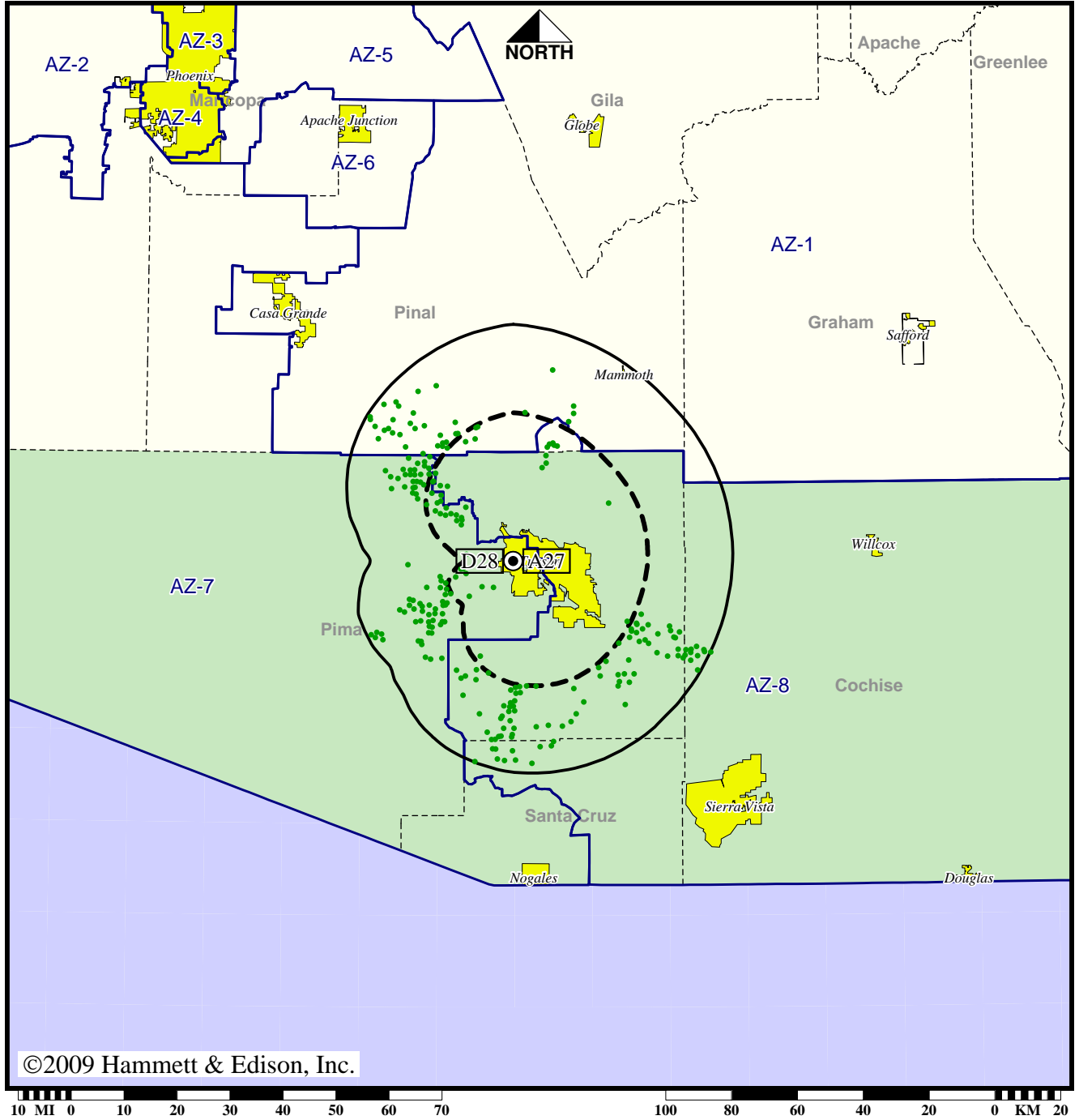
Analog service	781,767 persons
Digital service	827,909
Analog loss	0
Digital gain	46,142
Net gain	46,142

Station KUAS-TV • Analog Channel 27, DTV Channel 28 • Tucson, AZ

Approved Post-Transition Operation: Licensed

Digital License (solid): 50.0 kW ERP at 178 m HAAT, Network: PBS
 vs. Analog (dashed): 30.2 kW ERP at 178 m HAAT, Network: PBS

Market: Tucson, AZ



©2009 Hammett & Edison, Inc.

● Coverage gained after DTV transition
 No symbol = no change in coverage

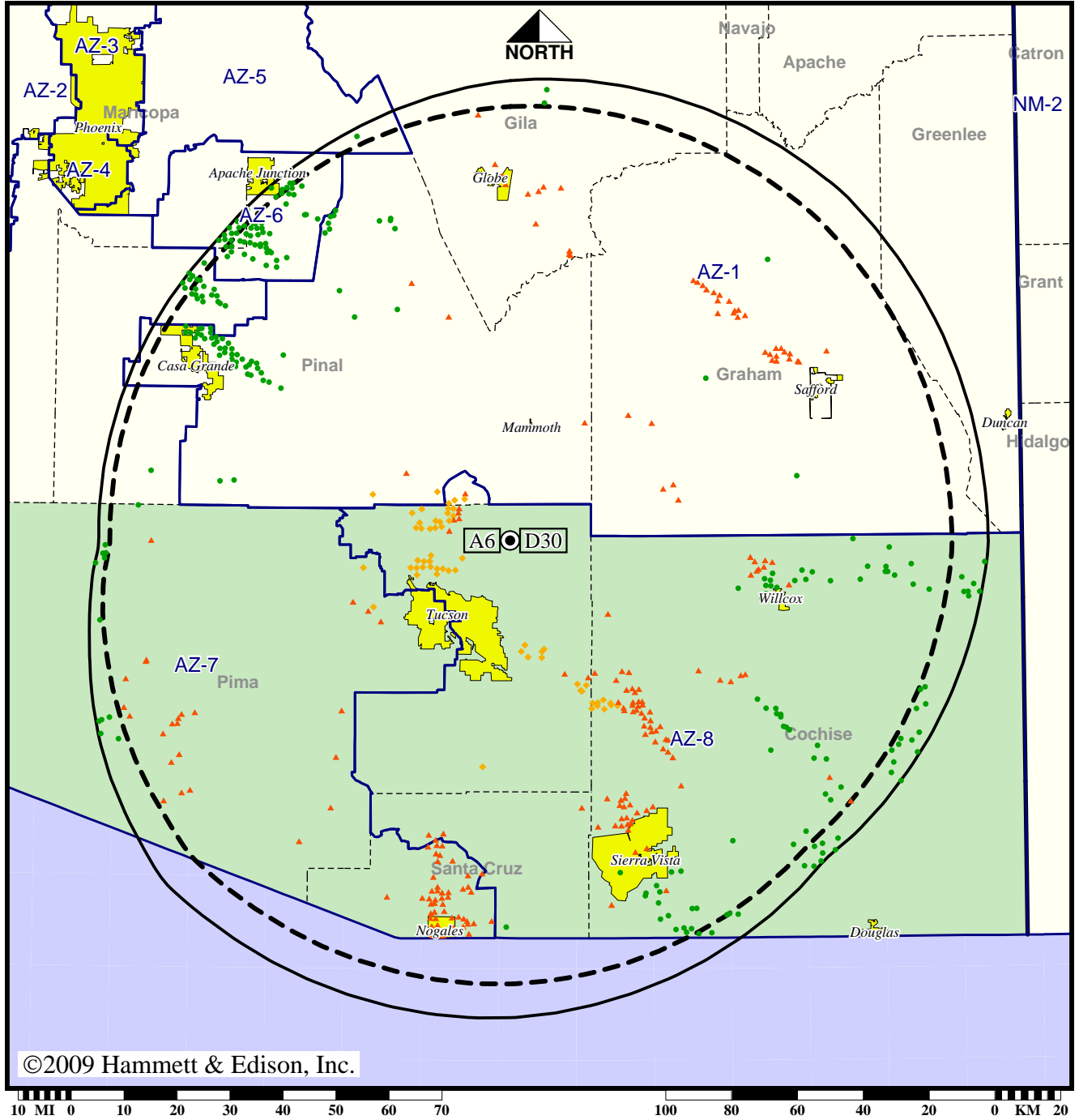
Analog service	781,767 persons
Digital service	827,909
Analog loss	0
Digital gain	46,142
Net gain	46,142

Station KUAT-TV • Analog Channel 6, DTV Channel 30 • Tucson, AZ

Expected Operation on June 13: Licensed

Digital License (solid): 668 kW ERP at 1092 m HAAT, Network: PBS
 vs. Analog (dashed): 33.9 kW ERP at 1101 m HAAT, Network: PBS

Market: Tucson, AZ



- Coverage gained after DTV transition
- No symbol = no change in coverage
- ◆ Coverage lost but still served by same network
- ▲ Coverage lost and no other service by same network

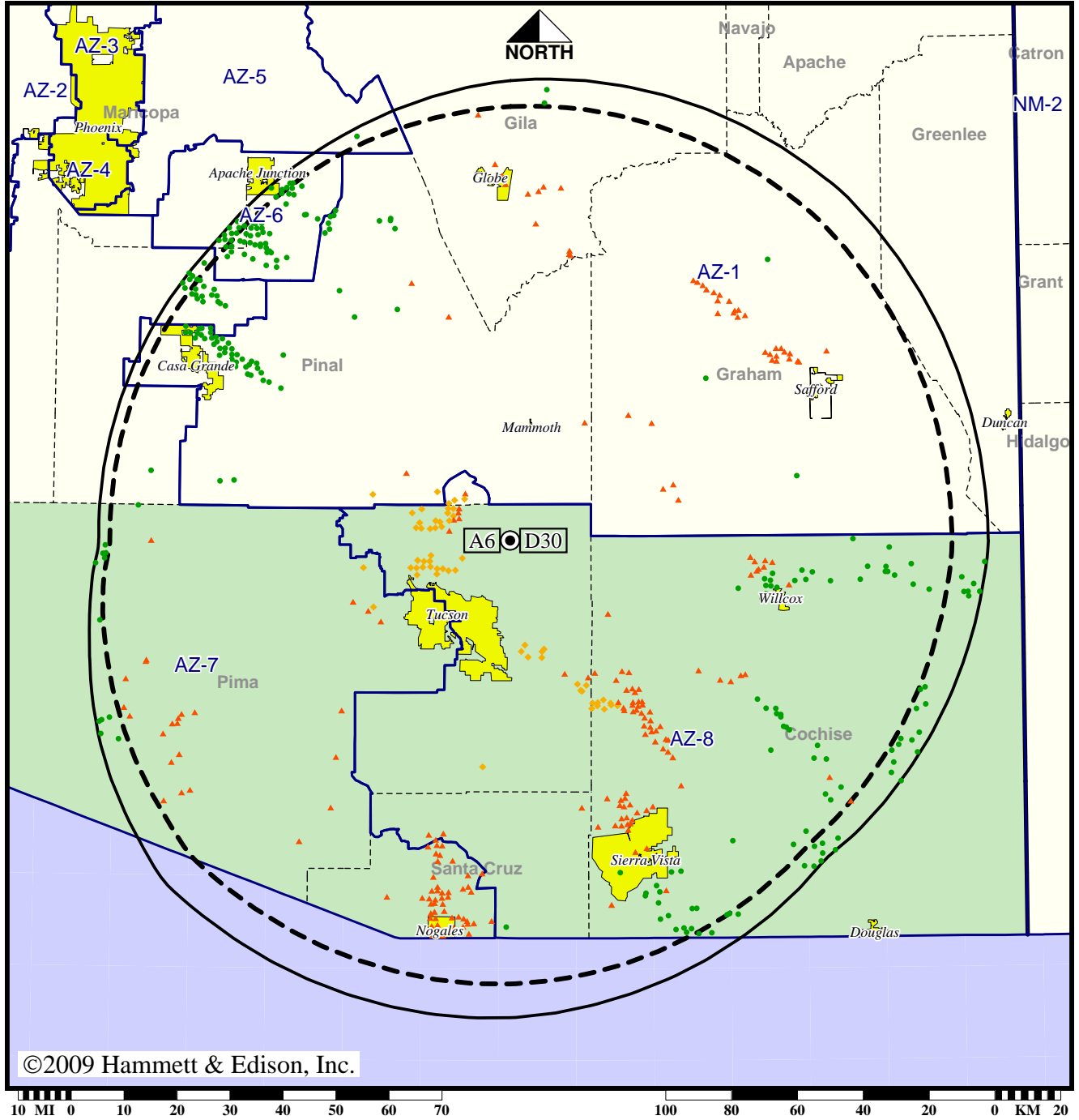
Analog service	1,000,203 persons
Digital service	943,290
Analog loss	91,798
Digital gain	34,885
Net gain	-56,913

Station KUAT-TV • Analog Channel 6, DTV Channel 30 • Tucson, AZ

Approved Post-Transition Operation: Licensed

Digital License (solid): 668 kW ERP at 1092 m HAAT, Network: PBS
 vs. Analog (dashed): 33.9 kW ERP at 1101 m HAAT, Network: PBS

Market: Tucson, AZ



- Coverage gained after DTV transition
- No symbol = no change in coverage
- ◆ Coverage lost but still served by same network
- ▲ Coverage lost and no other service by same network

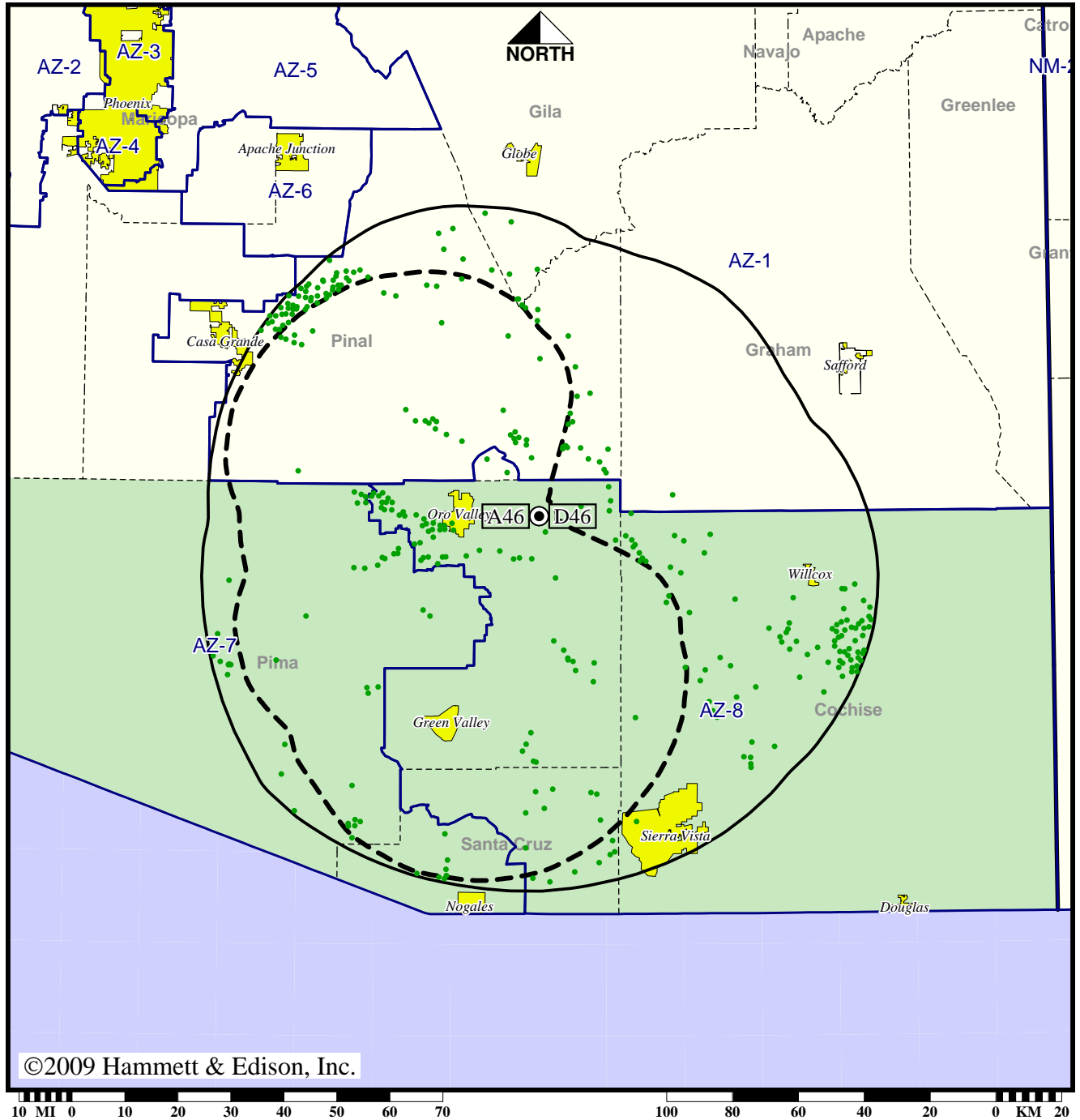
Analog service	1,000,203 persons
Digital service	943,290
Analog loss	91,798
Digital gain	34,885
Net gain	-56,913

Station KUVU-TV • Analog Channel 46, DTV Channel 46 • Green Valley, AZ

Expected Operation on June 13: Granted Construction Permit

Digital CP (solid): 70.8 kW ERP at 1113 m HAAT
vs. Analog (dashed): 1679 kW ERP at 1095 m HAAT

Market: Tucson, AZ



● Coverage gained after DTV transition
No symbol = no change in coverage

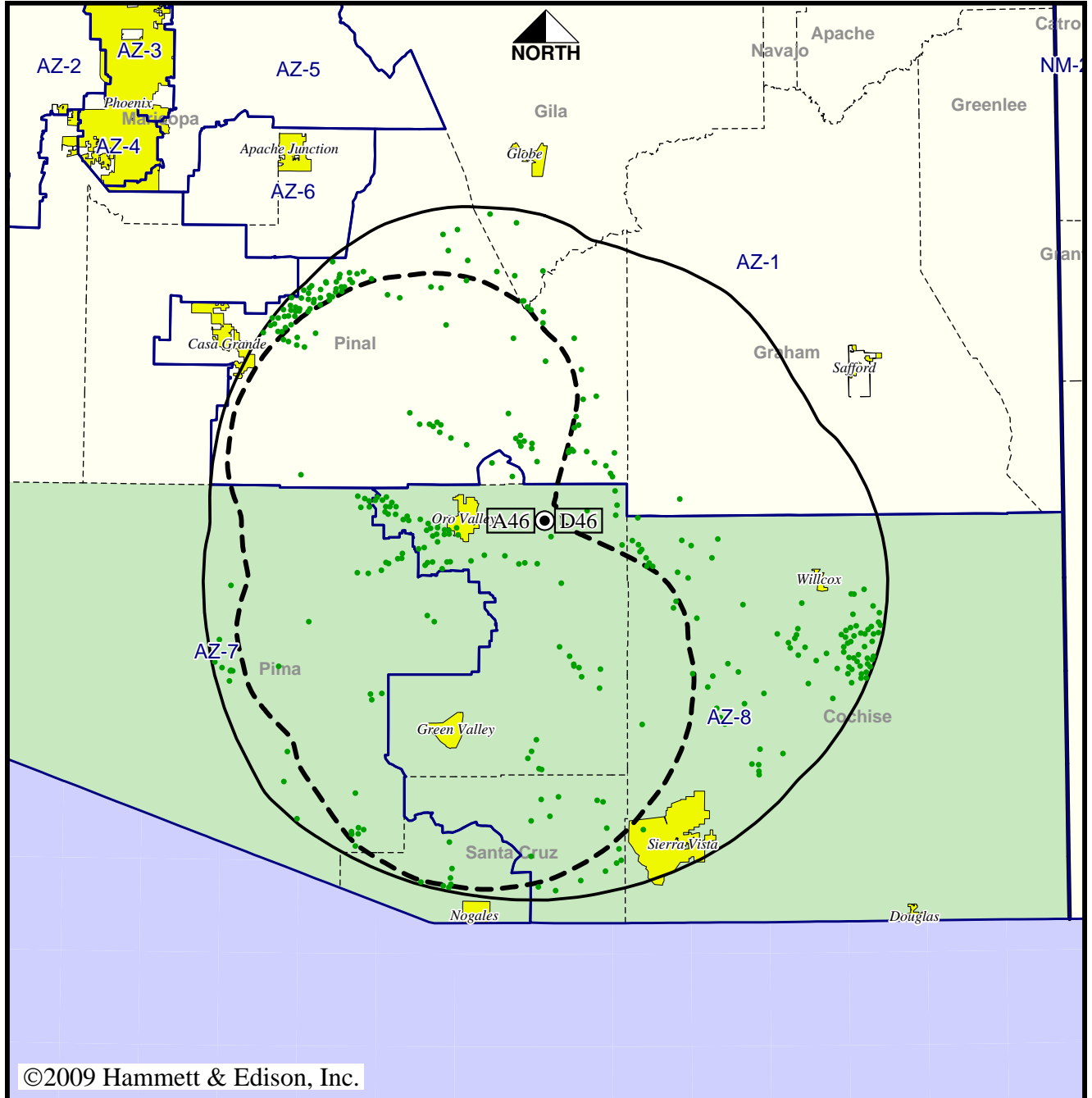
Analog service	696,996 persons
Digital service	777,418
Analog loss	0
Digital gain	80,422
Net gain	80,422

Station KUVU-TV • Analog Channel 46, DTV Channel 46 • Green Valley, AZ

Approved Post-Transition Operation: Granted Construction Permit

Digital CP (solid): 70.8 kW ERP at 1113 m HAAT
 vs. Analog (dashed): 1679 kW ERP at 1095 m HAAT

Market: Tucson, AZ



©2009 Hammett & Edison, Inc.



● Coverage gained after DTV transition
 No symbol = no change in coverage

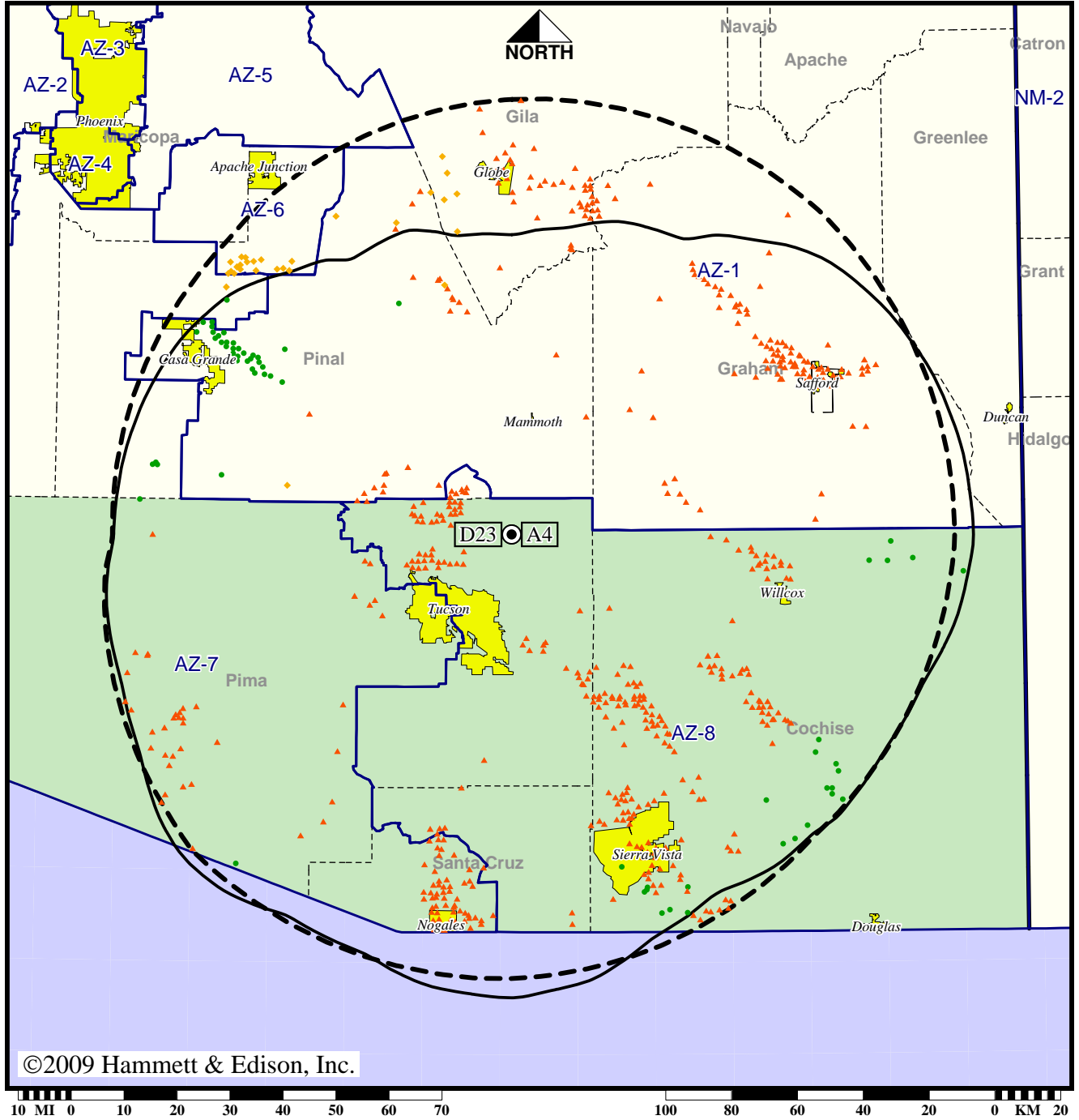
Analog service	696,996 persons
Digital service	777,418
Analog loss	0
Digital gain	80,422
Net gain	80,422

TV Station KVOA • Analog Channel 4, DTV Channel 23 • Tucson, AZ

Expected Operation on June 13: Granted Construction Permit

Digital CP (solid): 405 kW ERP at 1123 m HAAT, Network: NBC
 vs. Analog (dashed): 35.0 kW ERP at 1092 m HAAT, Network: NBC

Market: Tucson, AZ



- Coverage gained after DTV transition
- No symbol = no change in coverage
- ◆ Coverage lost but still served by same network
- ▲ Coverage lost and no other service by same network

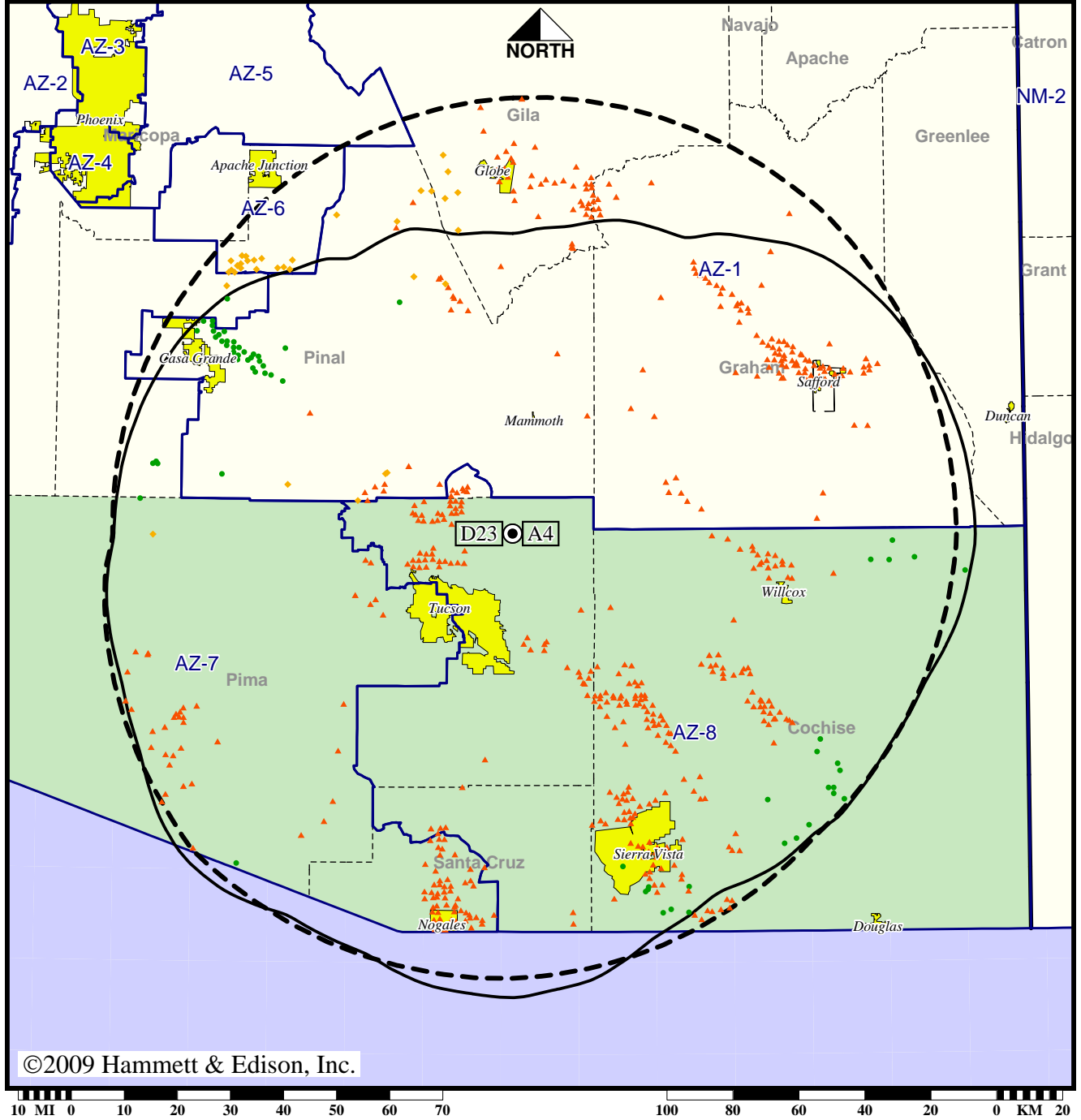
Analog service	1,022,421 persons
Digital service	865,842
Analog loss	163,779
Digital gain	7,200
Net gain	-156,579

TV Station KVOA • Analog Channel 4, DTV Channel 23 • Tucson, AZ

Approved Post-Transition Operation: Granted Construction Permit

Digital CP (solid): 405 kW ERP at 1123 m HAAT, Network: NBC
 vs. Analog (dashed): 35.0 kW ERP at 1092 m HAAT, Network: NBC

Market: Tucson, AZ



©2009 Hammett & Edison, Inc.

- Coverage gained after DTV transition
- No symbol = no change in coverage
- ◆ Coverage lost but still served by same network
- ▲ Coverage lost and no other service by same network

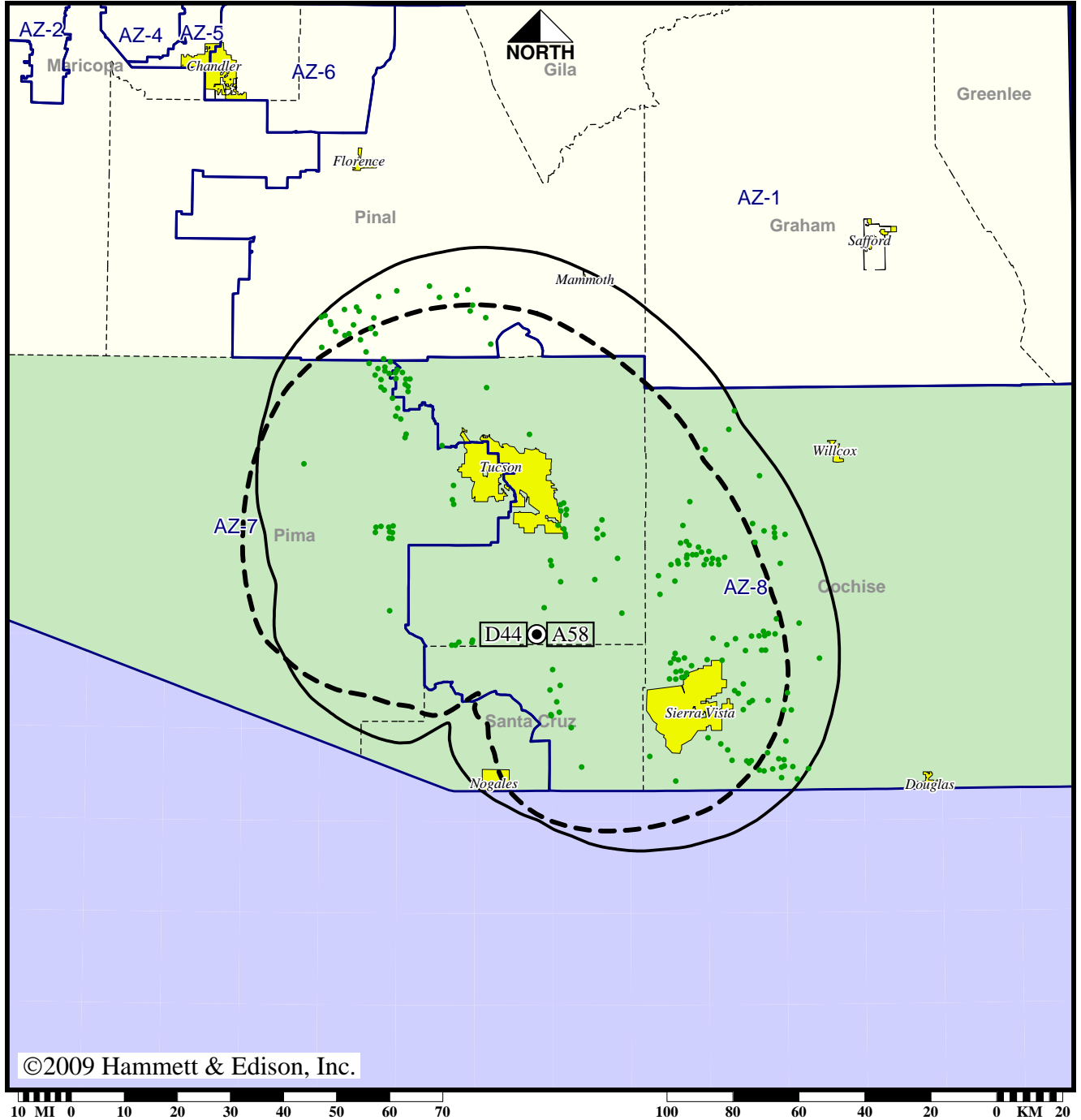
Analog service	1,022,421 persons
Digital service	865,840
Analog loss	163,781
Digital gain	7,200
Net gain	-156,581

TV Station KWBA • Analog Channel 58, DTV Channel 44 • Sierra Vista, AZ

Expected Operation on June 13: Licensed

Digital License (solid): 1000 kW ERP at 319 m HAAT
 vs. Analog (dashed): 5000 kW ERP at 335 m HAAT

Market: Tucson, AZ



©2009 Hammett & Edison, Inc.

10 MI 0 10 20 30 40 50 60 70 100 80 60 40 20 0 KM 20

- Coverage gained after DTV transition
- No symbol = no change in coverage

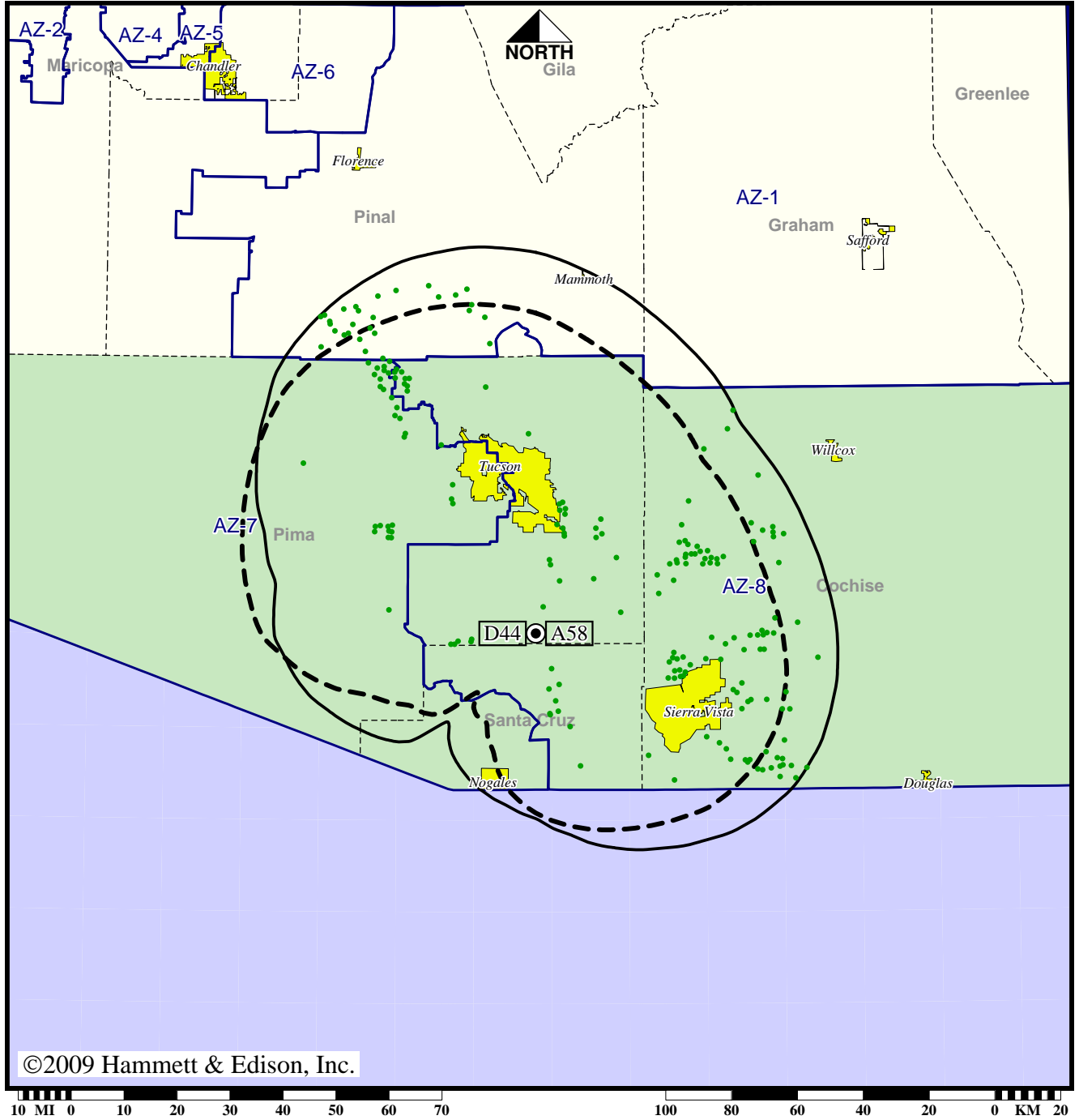
Analog service	833,069 persons
Digital service	862,460
Analog loss	0
Digital gain	29,391
Net gain	29,391

TV Station KWBA • Analog Channel 58, DTV Channel 44 • Sierra Vista, AZ

Approved Post-Transition Operation: Licensed

Digital License (solid): 1000 kW ERP at 319 m HAAT
 vs. Analog (dashed): 5000 kW ERP at 335 m HAAT

Market: Tucson, AZ



©2009 Hammett & Edison, Inc.

- Coverage gained after DTV transition
- No symbol = no change in coverage

Analog service	833,069 persons
Digital service	862,460
Analog loss	0
Digital gain	29,391
Net gain	29,391