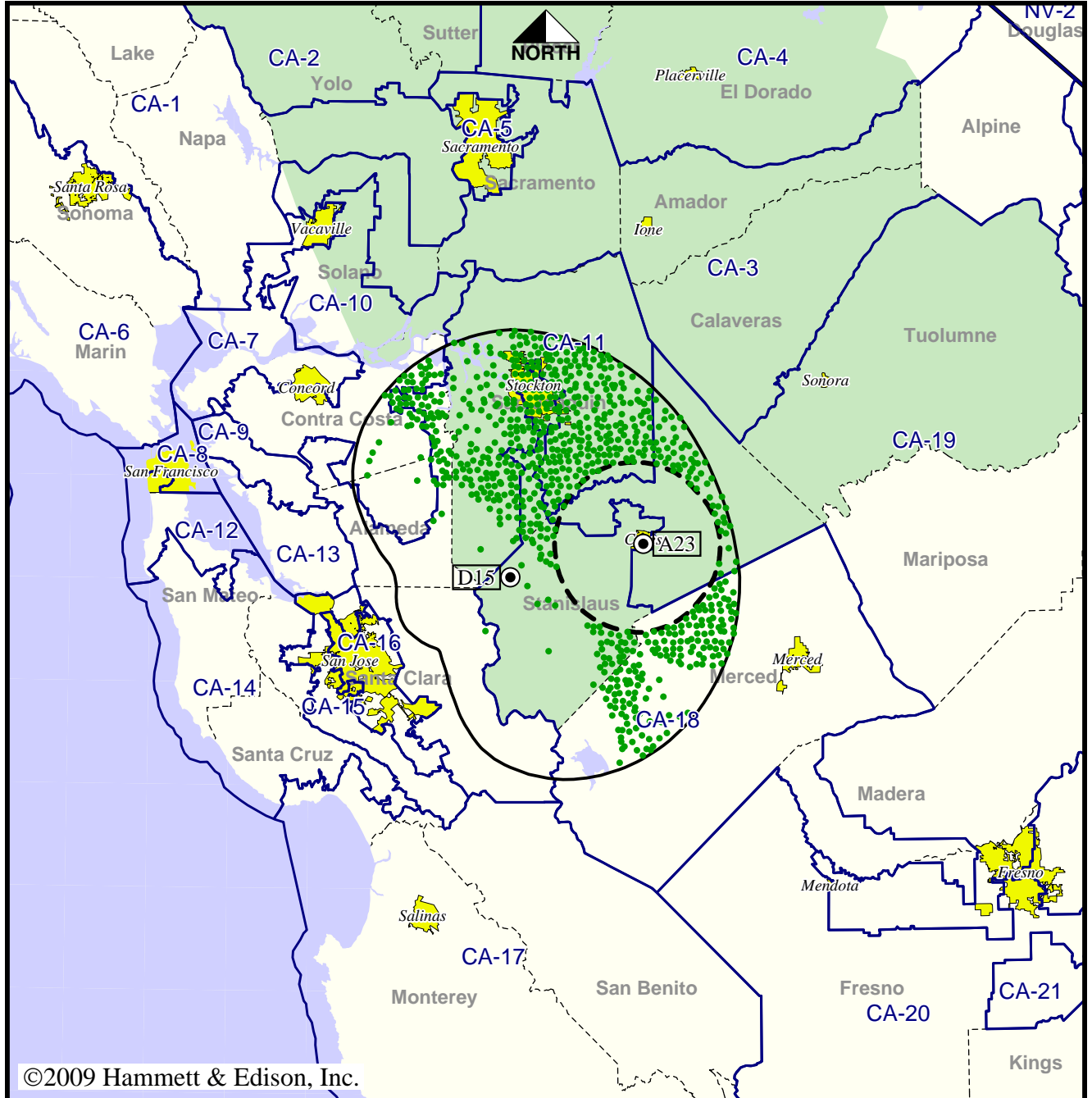


TV Station KBSV • Analog Channel 23, DTV Channel 15 • Ceres, CA

Expected Operation on June 13: Granted Construction Permit

Digital CP (solid): 0.421 kW ERP at 576 m HAAT  
 vs. Analog (dashed): 15.1 kW ERP at 47 m HAAT

Market: Sacramento-Stockton-Modesto, CA



©2009 Hammett & Edison, Inc.

- Coverage gained after DTV transition
- No symbol = no change in coverage

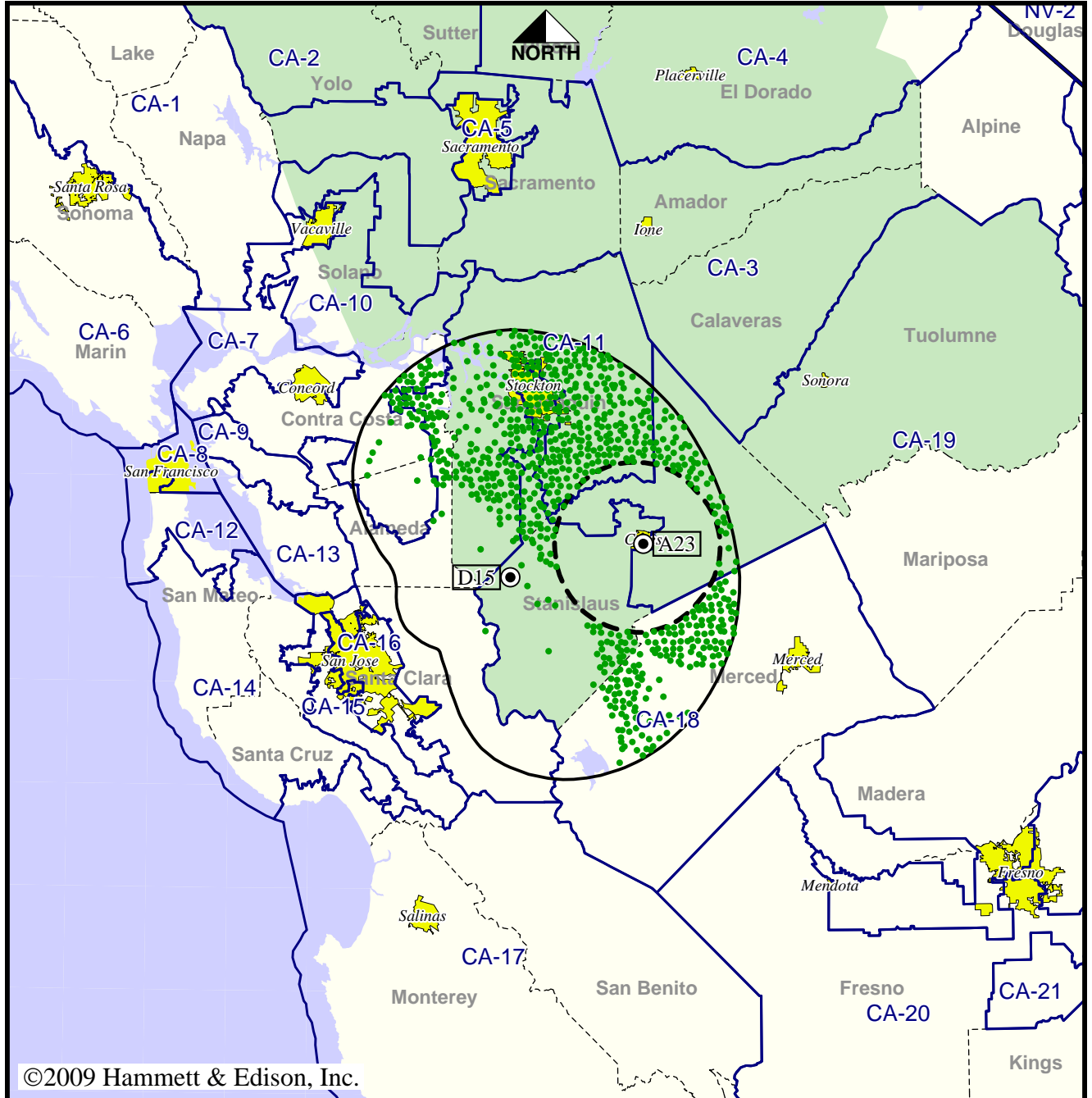
Analog service	435,047 persons
Digital service	1,026,277
Analog loss	0
Digital gain	591,230
Net gain	591,230

TV Station KBSV • Analog Channel 23, DTV Channel 15 • Ceres, CA

Approved Post-Transition Operation: Granted Construction Permit

Digital CP (solid): 0.421 kW ERP at 576 m HAAT  
 vs. Analog (dashed): 15.1 kW ERP at 47 m HAAT

Market: Sacramento-Stockton-Modesto, CA



©2009 Hammett & Edison, Inc.

● Coverage gained after DTV transition  
 No symbol = no change in coverage

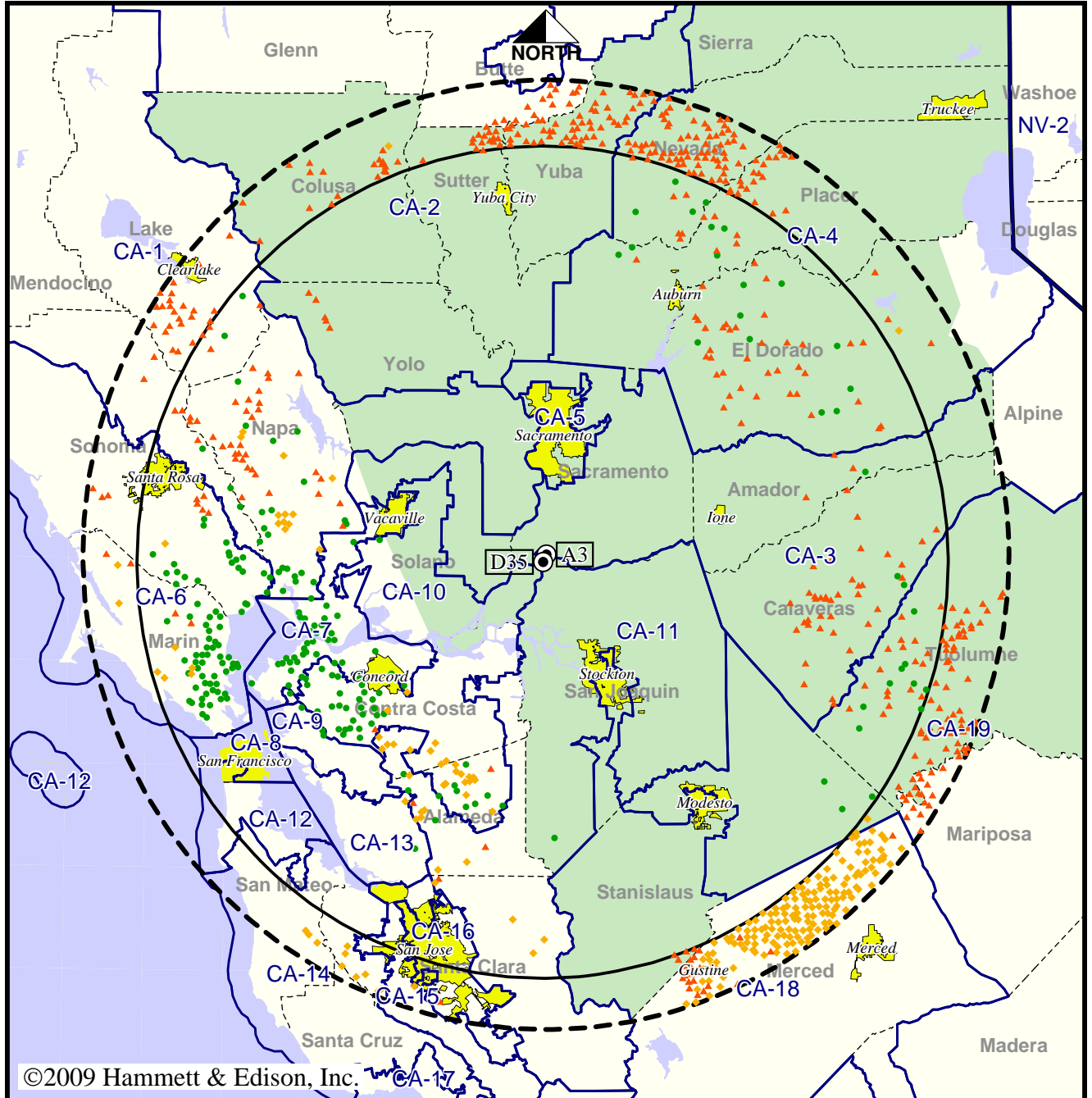
Analog service	435,047 persons
Digital service	1,026,277
Analog loss	0
Digital gain	591,230
Net gain	591,230

Station KCRA-TV • Analog Channel 3, DTV Channel 35 • Sacramento, CA

Expected Operation on June 13: Special Temporary Authorization

Digital STA (solid): 1000 kW ERP at 462 m HAAT, Network: NBC  
 vs. Analog (dashed): 100 kW ERP at 600 m HAAT, Network: NBC

Market: Sacramento-Stockton-Modesto, CA



©2009 Hammett & Edison, Inc.

- Coverage gained after DTV transition
- No symbol = no change in coverage
- ◆ Coverage lost but still served by same network
- ▲ Coverage lost and no other service by same network

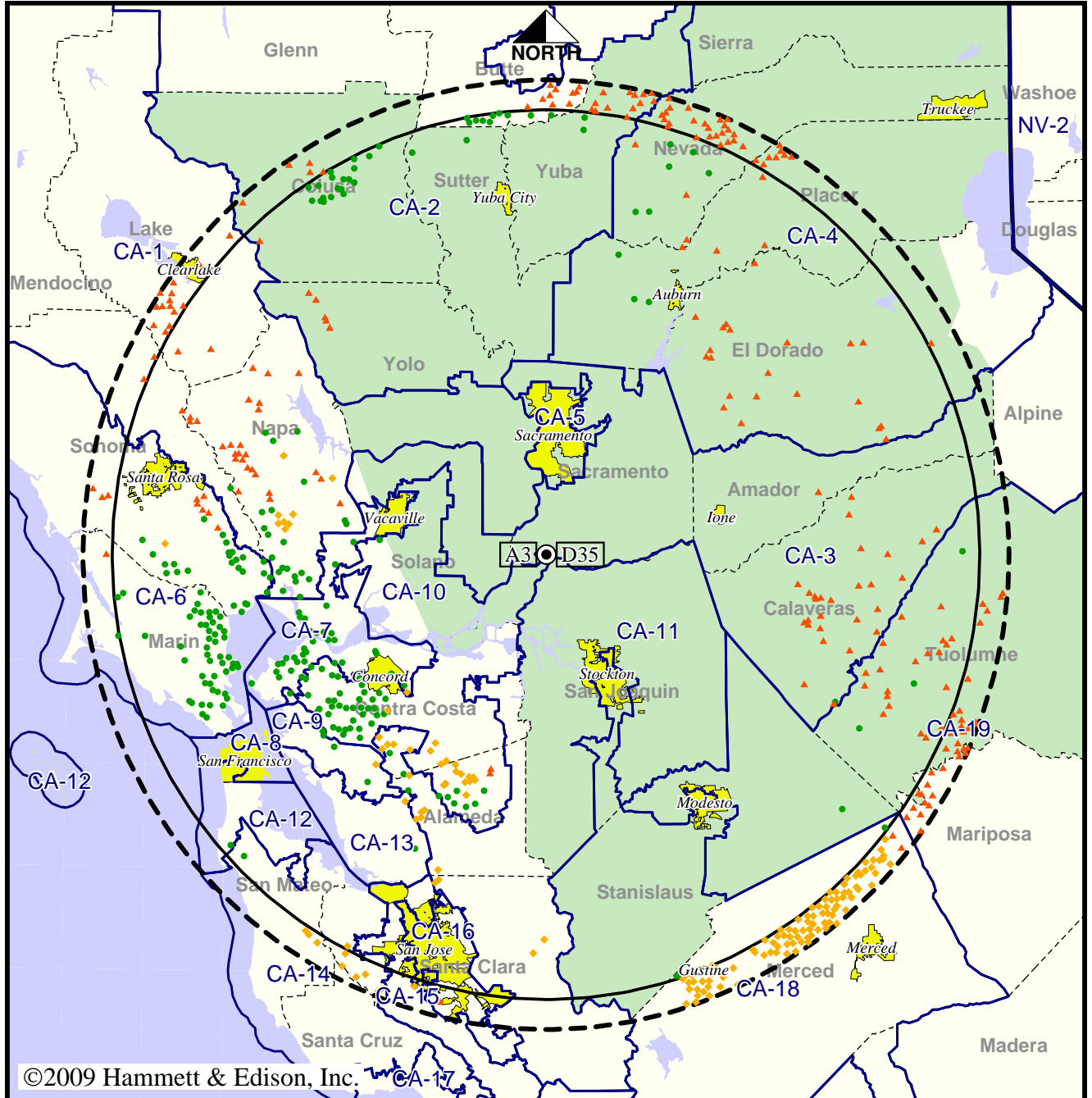
Analog service	4,002,463 persons
Digital service	4,137,234
Analog loss	215,897
Digital gain	350,668
Net gain	134,771

Station KCRA-TV • Analog Channel 3, DTV Channel 35 • Sacramento, CA

Approved Post-Transition Operation: Granted Construction Permit

Digital CP (solid): 1000 kW ERP at 579 m HAAT, Network: NBC  
 vs. Analog (dashed): 100 kW ERP at 600 m HAAT, Network: NBC

Market: Sacramento-Stockton-Modesto, CA



©2009 Hammett & Edison, Inc.

- Coverage gained after DTV transition
- No symbol = no change in coverage
- ◆ Coverage lost but still served by same network
- ▲ Coverage lost and no other service by same network

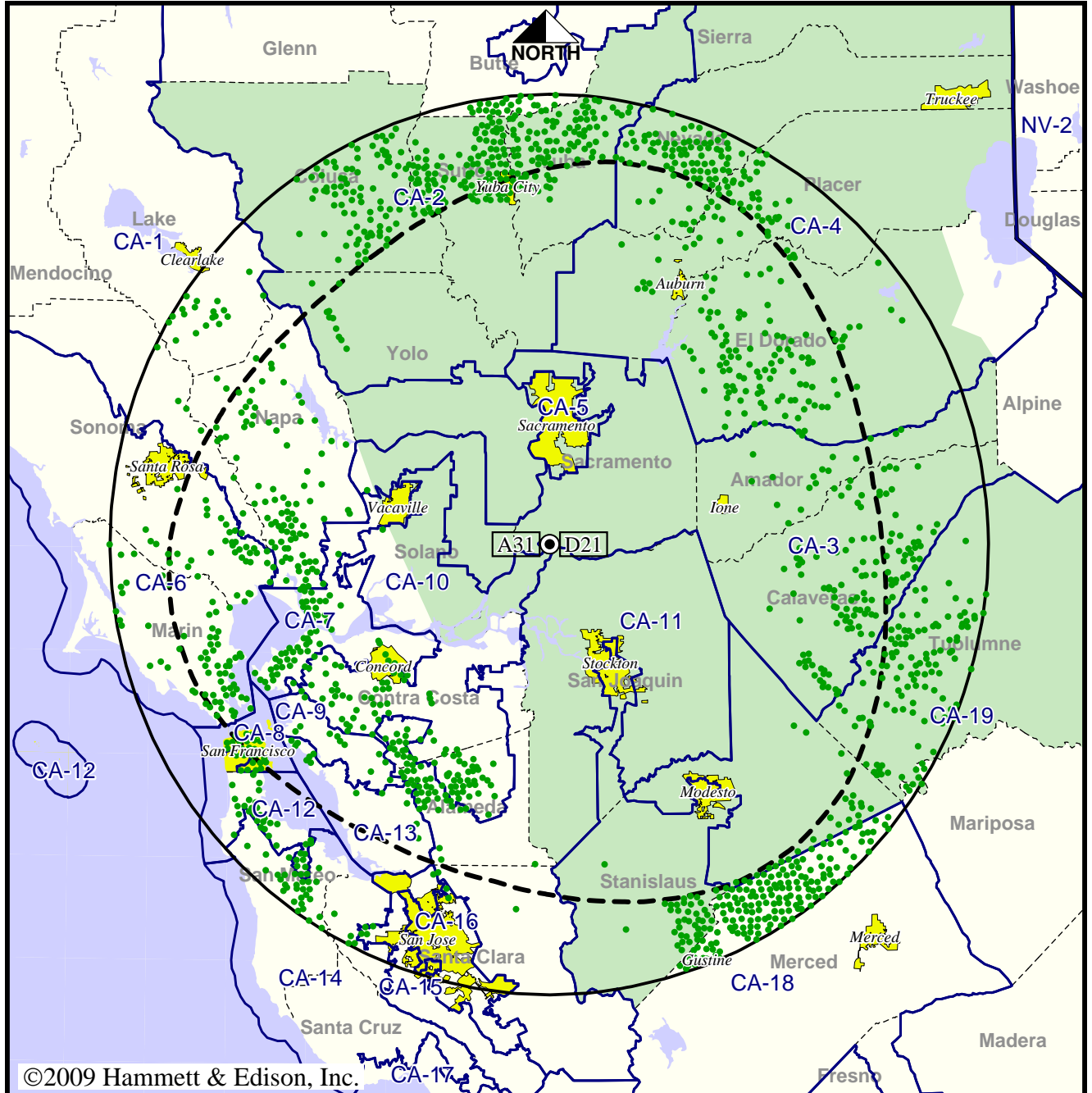
Analog service	4,002,463 persons
Digital service	4,252,814
Analog loss	130,771
Digital gain	381,122
Net gain	250,351

Station KMAX-TV • Analog Channel 31, DTV Channel 21 • Sacramento, CA

Expected Operation on June 13: Licensed

Digital License (solid): 850 kW ERP at 581 m HAAT  
 vs. Analog (dashed): 5000 kW ERP at 560 m HAAT

Market: Sacramento-Stockton-Modesto, CA



©2009 Hammett & Edison, Inc.

● Coverage gained after DTV transition  
 No symbol = no change in coverage

Analog service	3,633,068 persons
Digital service	5,751,948
Analog loss	0
Digital gain	2,118,880
Net gain	2,118,880

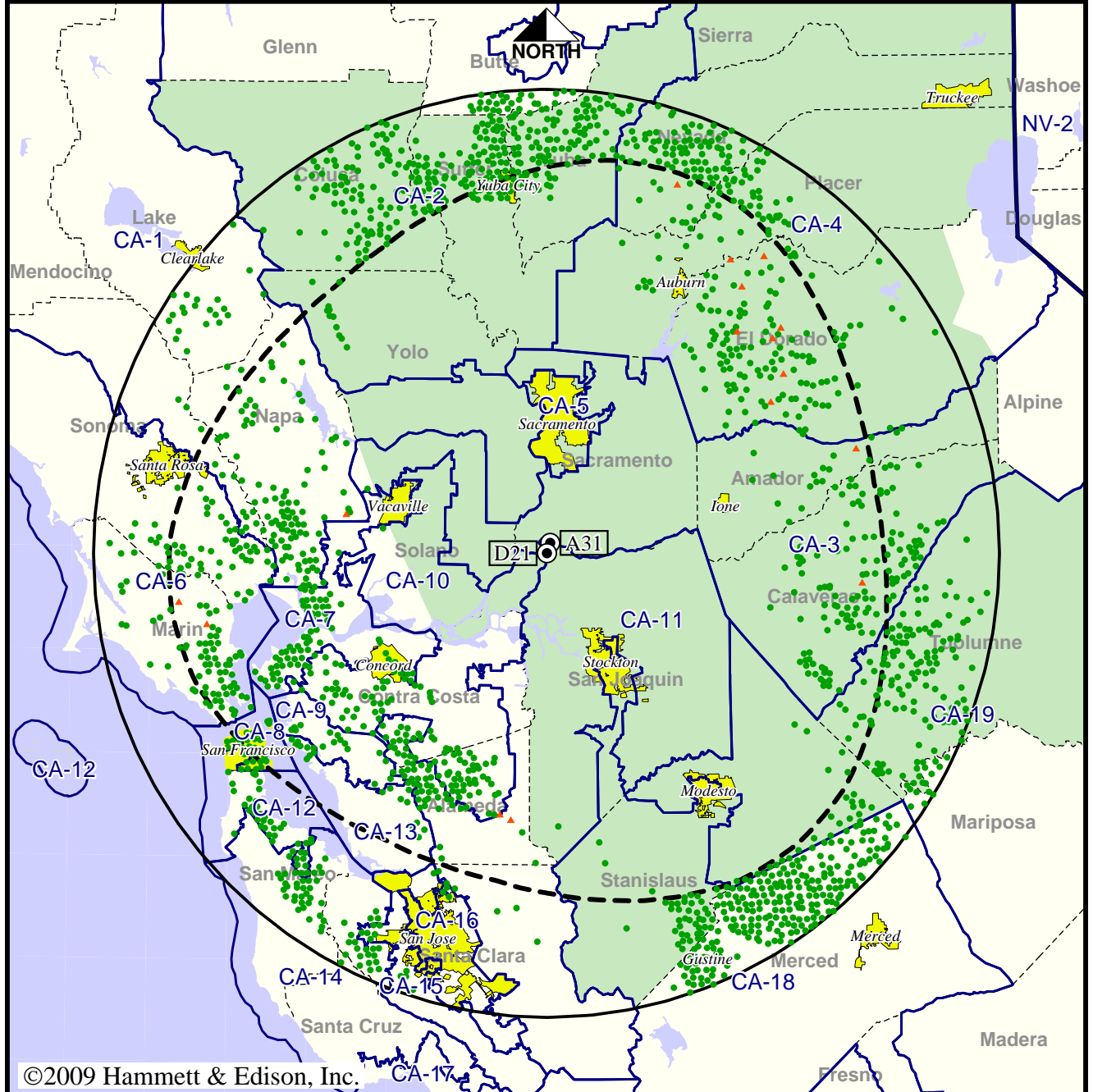
BLCDT-20041018ABT  
 KMAX-TV Digital License

Station KMAX-TV • Analog Channel 31, DTV Channel 21 • Sacramento, CA

Approved Post-Transition Operation: Granted Construction Permit

Digital CP (solid): 1000 kW ERP at 614 m HAAT  
 vs. Analog (dashed): 5000 kW ERP at 560 m HAAT

Market: Sacramento-Stockton-Modesto, CA



©2009 Hammett & Edison, Inc.

10 MI 0 10 20 30 40 50 60 70 100 80 60 40 20 0 KM 20

- Coverage gained after DTV transition
- No symbol = no change in coverage
- ▲ Coverage lost after DTV transition

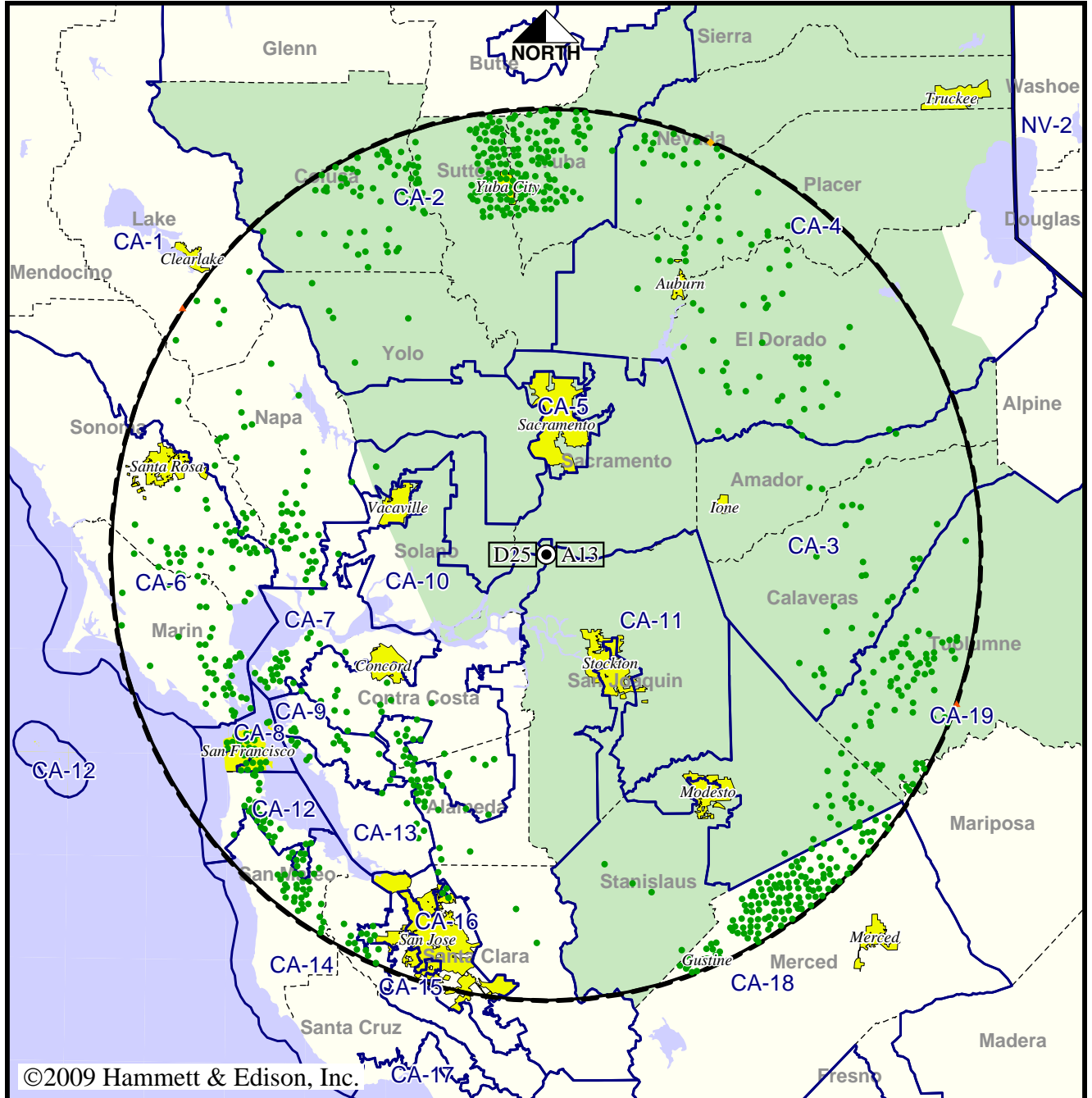
Analog service	3,633,068 persons
Digital service	6,078,882
Analog loss	1,993
Digital gain	2,447,807
Net gain	2,445,814

TV Station KOVR • Analog Channel 13, DTV Channel 25 • Stockton, CA

Expected Operation on June 13: Licensed

Digital License (solid): 760 kW ERP at 591 m HAAT, Network: CBS  
 vs. Analog (dashed): 316 kW ERP at 610 m HAAT, Network: CBS

Market: Sacramento-Stockton-Modesto, CA



©2009 Hammett & Edison, Inc.

10 MI 0 10 20 30 40 50 60 70 100 80 60 40 20 0 KM 20

- Coverage gained after DTV transition
- No symbol = no change in coverage
- ◆ Coverage lost but still served by same network
- ▲ Coverage lost and no other service by same network

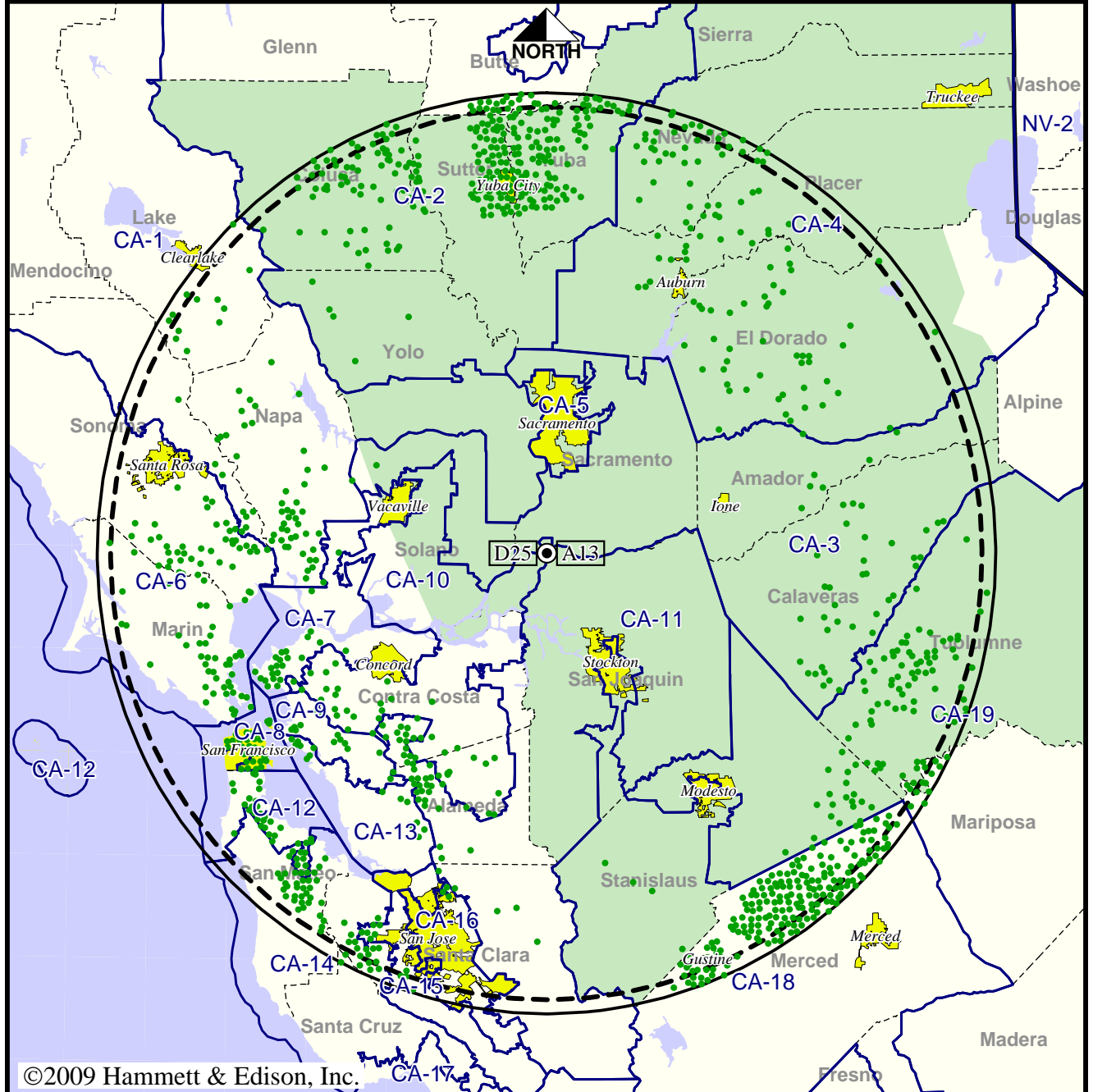
Analog service	4,146,821 persons
Digital service	5,731,339
Analog loss	553
Digital gain	1,585,071
Net gain	1,584,518

TV Station KOVR • Analog Channel 13, DTV Channel 25 • Stockton, CA

Approved Post-Transition Operation: Granted Construction Permit

Digital CP (solid): 1000 kW ERP at 614 m HAAT, Network: CBS  
 vs. Analog (dashed): 316 kW ERP at 610 m HAAT, Network: CBS

Market: Sacramento-Stockton-Modesto, CA



©2009 Hammett & Edison, Inc.

10 MI 0 10 20 30 40 50 60 70 100 80 60 40 20 0 KM 20

● Coverage gained after DTV transition  
 No symbol = no change in coverage

Analog service	4,146,821 persons
Digital service	5,949,378
Analog loss	0
Digital gain	1,802,557
Net gain	1,802,557

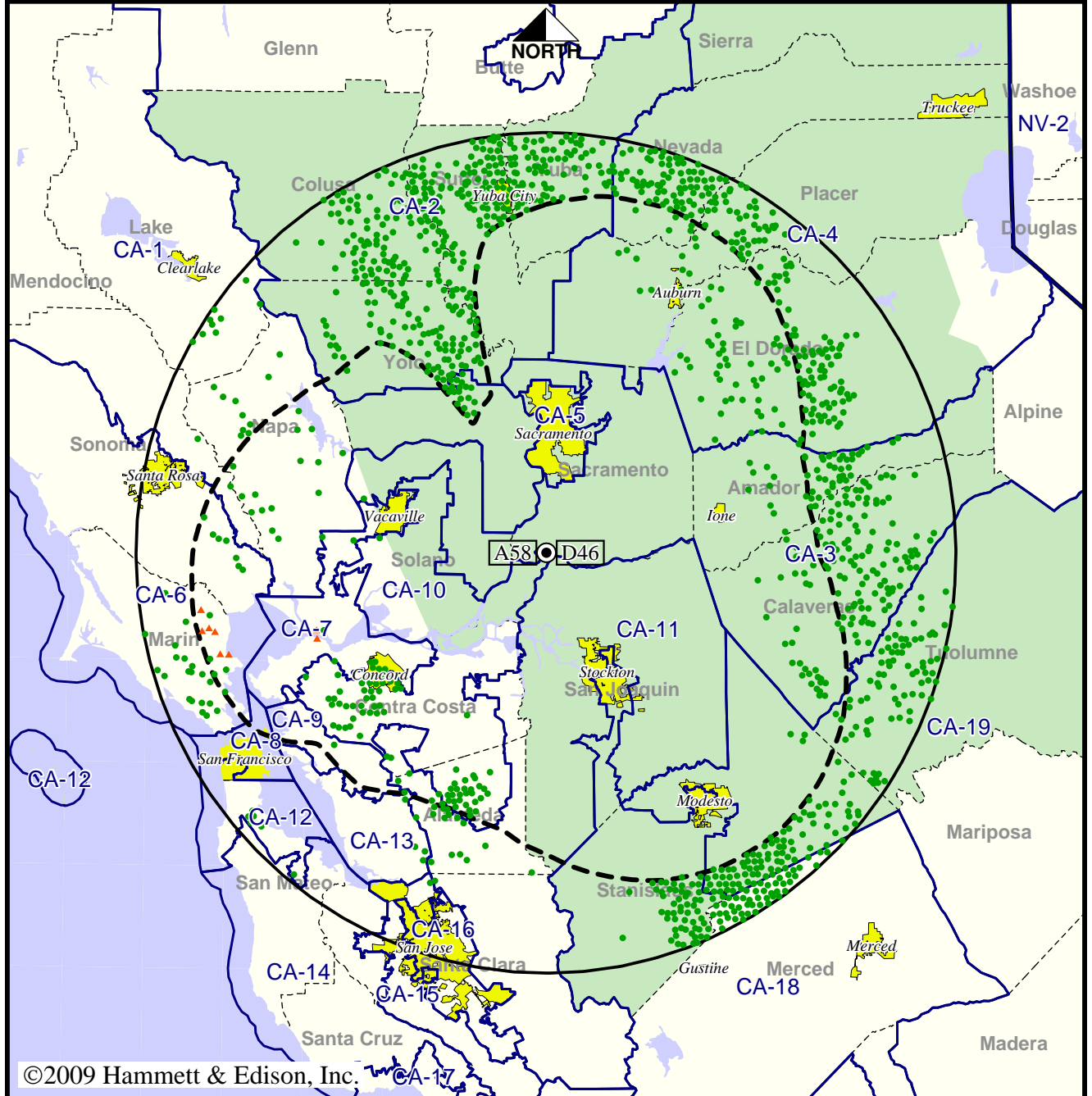


TV Station KQCA • Analog Channel 58, DTV Channel 46 • Stockton, CA

Expected Operation on June 13: Licensed

Digital License (solid): 600 kW ERP at 580 m HAAT  
 vs. Analog (dashed): 5000 kW ERP at 537 m HAAT

Market: Sacramento-Stockton-Modesto, CA



©2009 Hammett & Edison, Inc.

10 MI 0 10 20 30 40 50 60 70 100 80 60 40 20 0 KM 20

- Coverage gained after DTV transition
- No symbol = no change in coverage
- ▲ Coverage lost after DTV transition

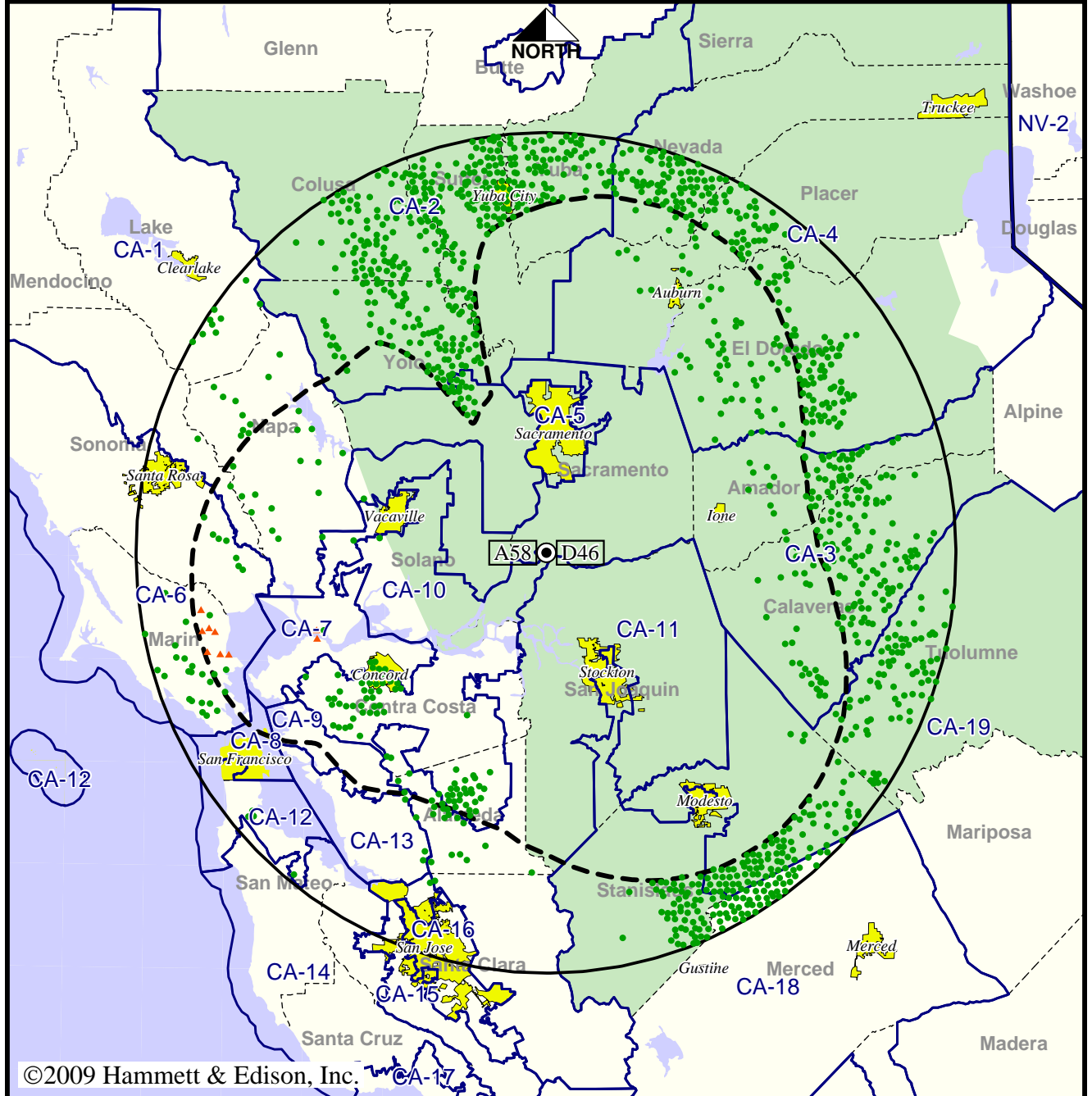
Analog service	3,263,743 persons
Digital service	4,024,977
Analog loss	19,977
Digital gain	781,211
Net gain	761,234

TV Station KQCA • Analog Channel 58, DTV Channel 46 • Stockton, CA

Approved Post-Transition Operation: Licensed

Digital License (solid): 600 kW ERP at 580 m HAAT  
 vs. Analog (dashed): 5000 kW ERP at 537 m HAAT

Market: Sacramento-Stockton-Modesto, CA



©2009 Hammett & Edison, Inc.

10 MI 0 10 20 30 40 50 60 70 100 80 60 40 20 0 KM 20

- Coverage gained after DTV transition
- No symbol = no change in coverage
- ▲ Coverage lost after DTV transition

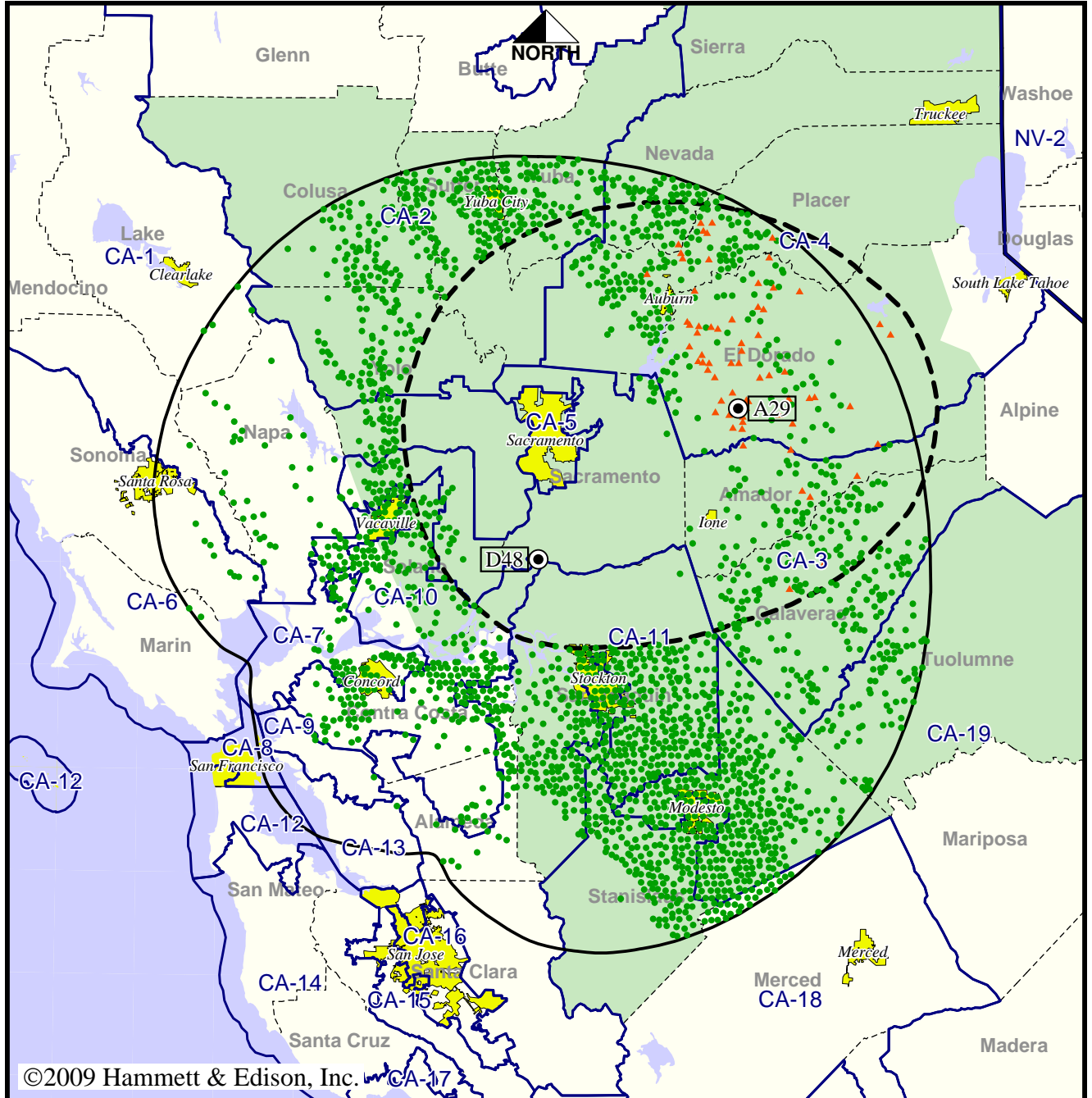
Analog service	3,263,743 persons
Digital service	4,009,792
Analog loss	25,183
Digital gain	771,232
Net gain	746,049

TV Station KSPX • Analog Channel 29, DTV Channel 48 • Sacramento, CA

Expected Operation on June 13: Licensed

Digital License (solid): 1000 kW ERP at 489 m HAAT  
 vs. Analog (dashed): 4570 kW ERP at 321 m HAAT

Market: Sacramento-Stockton-Modesto, CA



©2009 Hammett & Edison, Inc.



- Coverage gained after DTV transition
- No symbol = no change in coverage
- ▲ Coverage lost after DTV transition

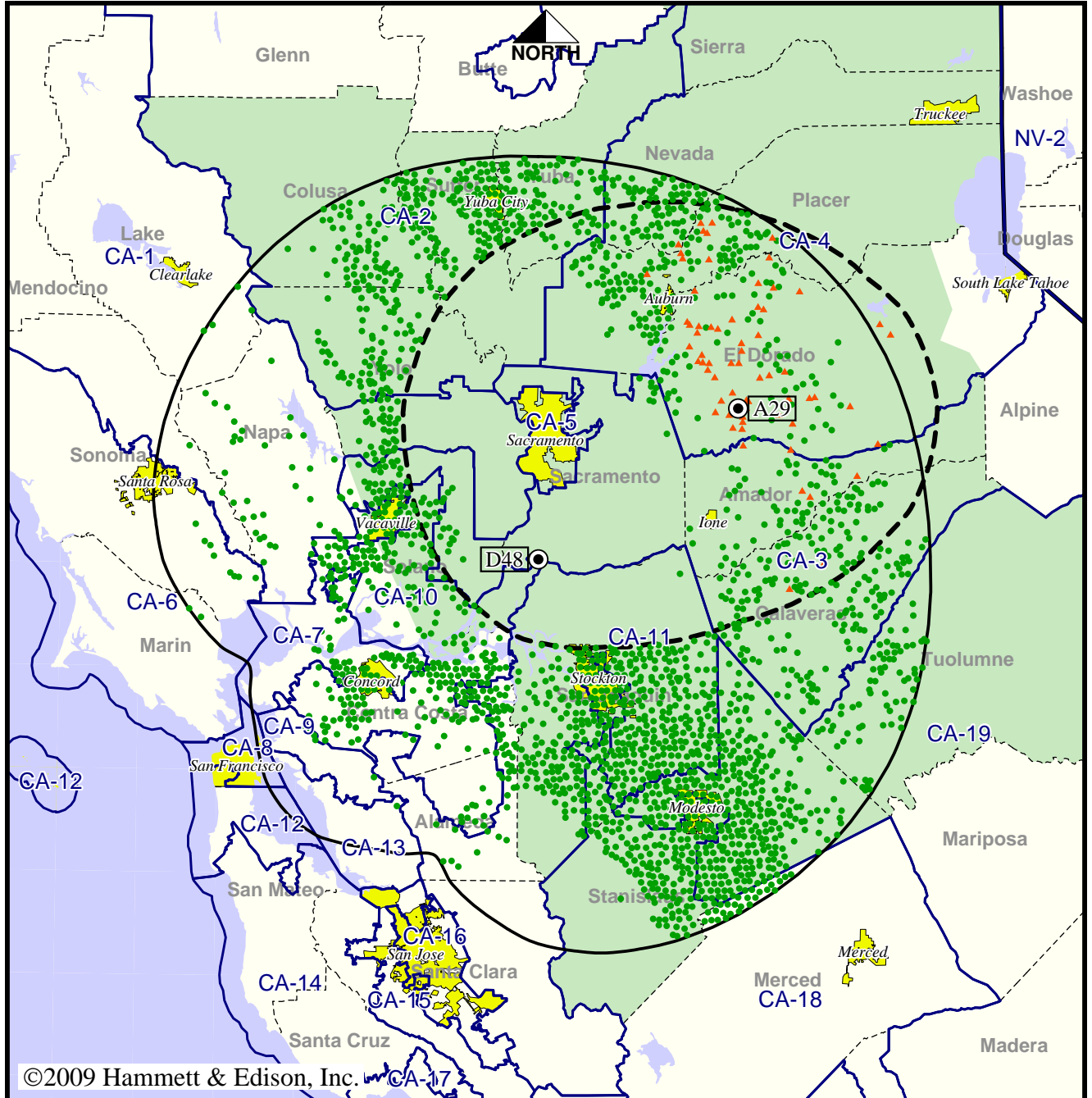
Analog service	1,796,515 persons
Digital service	3,756,964
Analog loss	11,296
Digital gain	1,971,745
Net gain	1,960,449

TV Station KSPX • Analog Channel 29, DTV Channel 48 • Sacramento, CA

Approved Post-Transition Operation: Licensed

Digital License (solid): 1000 kW ERP at 489 m HAAT  
 vs. Analog (dashed): 4570 kW ERP at 321 m HAAT

Market: Sacramento-Stockton-Modesto, CA



©2009 Hammett & Edison, Inc.

10 MI 0 10 20 30 40 50 60 70 100 80 60 40 20 0 KM 20

- Coverage gained after DTV transition
- No symbol = no change in coverage
- ▲ Coverage lost after DTV transition

Analog service	1,796,515 persons
Digital service	3,756,964
Analog loss	11,296
Digital gain	1,971,745
Net gain	1,960,449

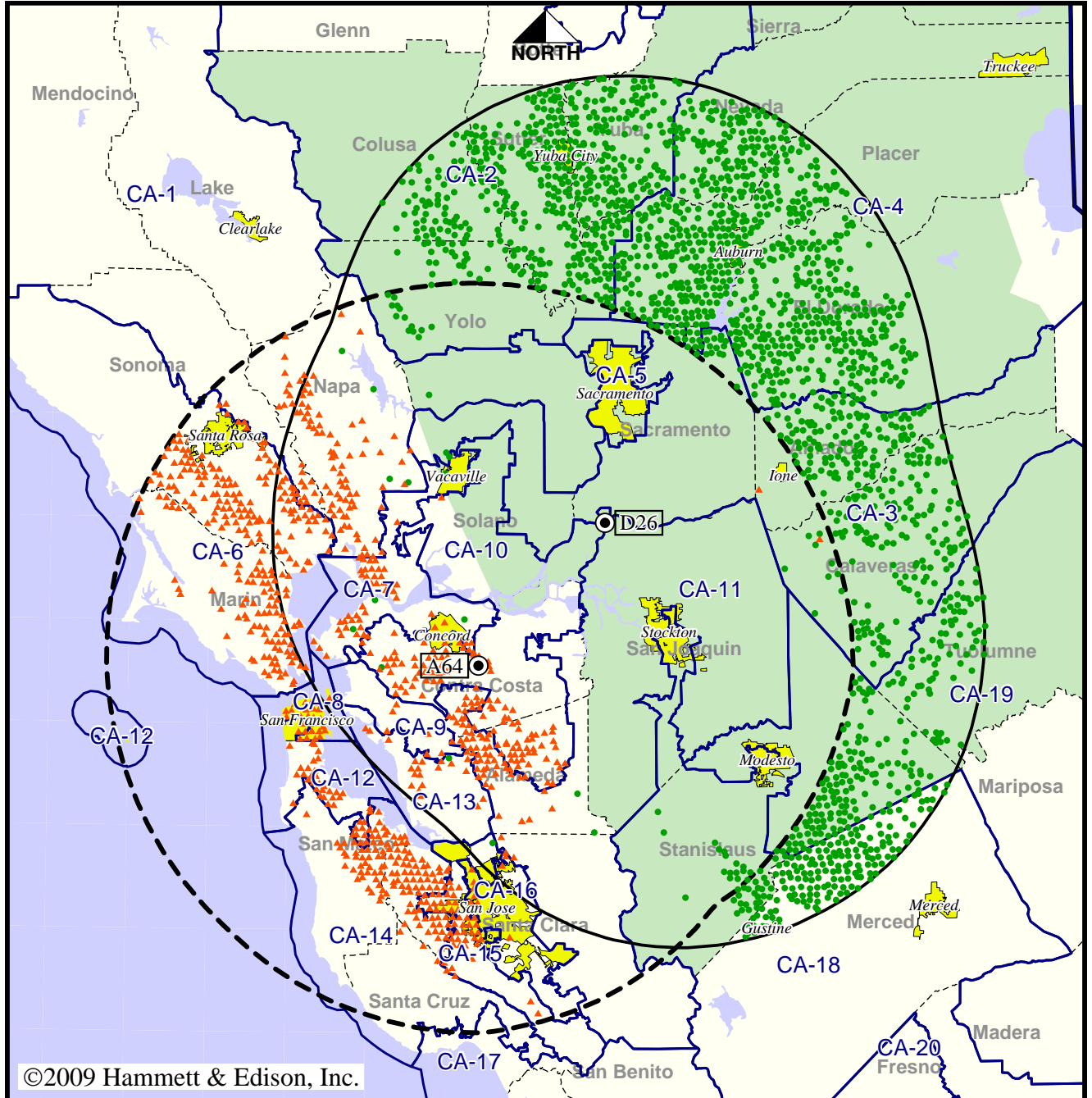


Station KTFK-TV • Analog Channel 64, DTV Channel 26 • Stockton, CA

Approved Post-Transition Operation: Granted Construction Permit

Digital CP (solid): 850 kW ERP at 595 m HAAT  
 vs. Analog (dashed): 1950 kW ERP at 874 m HAAT

Market: Sacramento-Stockton-Modesto, CA



©2009 Hammett & Edison, Inc.

- Coverage gained after DTV transition
- No symbol = no change in coverage
- ▲ Coverage lost after DTV transition

Analog service	5,863,602 persons
Digital service	3,801,110
Analog loss	2,948,482
Digital gain	885,990
Net gain	-2,062,492

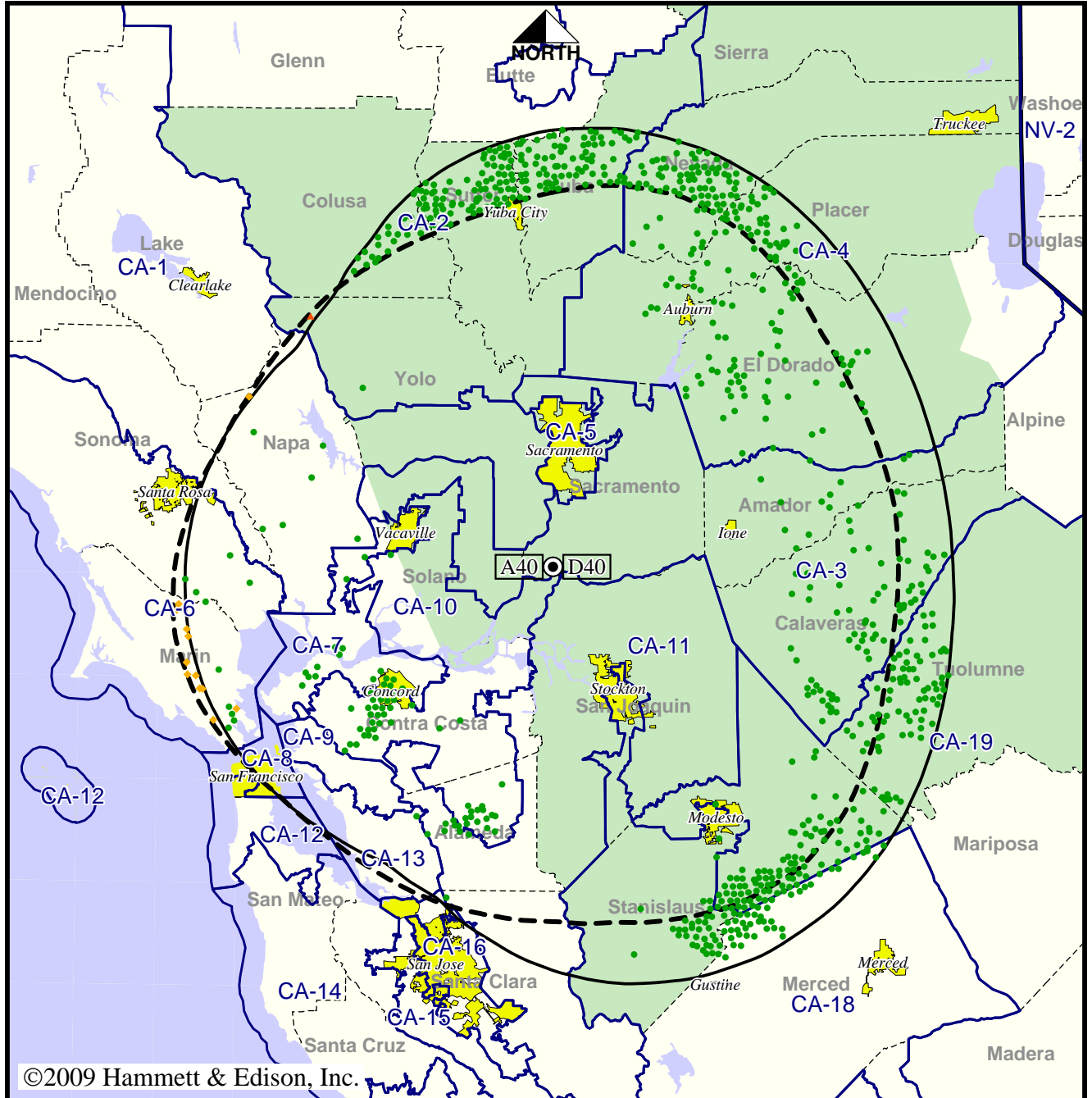
BMPCDT-20080616ACI  
 KTFK-TV Digital CP

**TV Station KTXL • Analog Channel 40, DTV Channel 40 • Sacramento, CA**

**Expected Operation on June 13: Granted Construction Permit**

**Digital CP (solid): 1000 kW ERP at 601 m HAAT, Network: Fox  
vs. Analog (dashed): 5000 kW ERP at 597 m HAAT, Network: Fox**

**Market: Sacramento-Stockton-Modesto, CA**



©2009 Hammett & Edison, Inc.



- Coverage gained after DTV transition
- No symbol = no change in coverage
- ◆ Coverage lost but still served by same network
- ▲ Coverage lost and no other service by same network

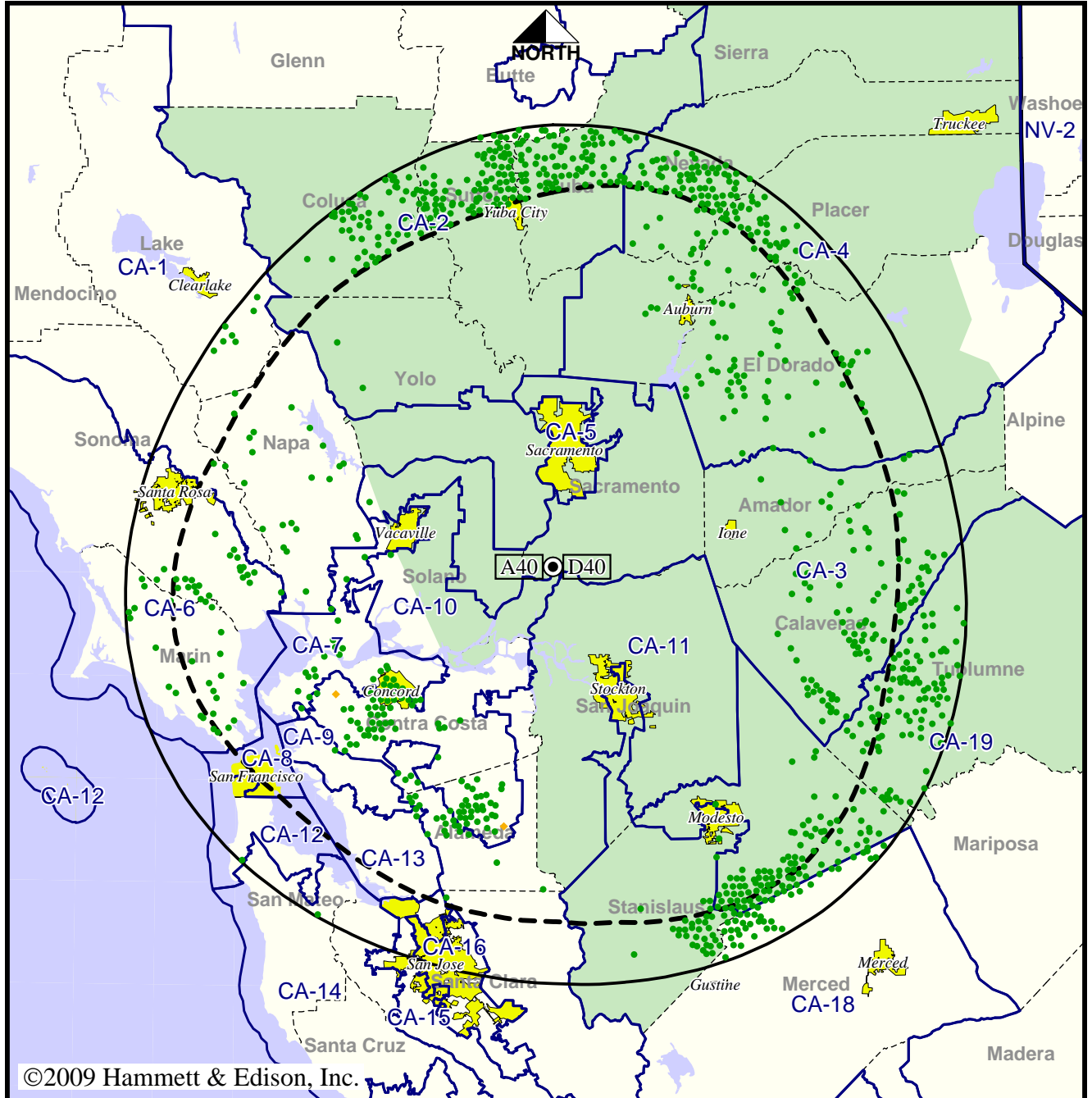
Analog service	3,458,521 persons
Digital service	3,975,621
Analog loss	2,395
Digital gain	519,495
Net gain	517,100

TV Station KTXL • Analog Channel 40, DTV Channel 40 • Sacramento, CA

Approved Post-Transition Operation: Granted Construction Permit

Digital CP (solid): 950 kW ERP at 601 m HAAT, Network: Fox  
 vs. Analog (dashed): 5000 kW ERP at 597 m HAAT, Network: Fox

Market: Sacramento-Stockton-Modesto, CA



©2009 Hammett & Edison, Inc.

10 MI 0 10 20 30 40 50 60 70 100 80 60 40 20 0 KM 20

- Coverage gained after DTV transition
- No symbol = no change in coverage
- ◆ Coverage lost but still served by same network

Analog service	3,458,521 persons
Digital service	4,158,607
Analog loss	244
Digital gain	700,330
Net gain	700,086

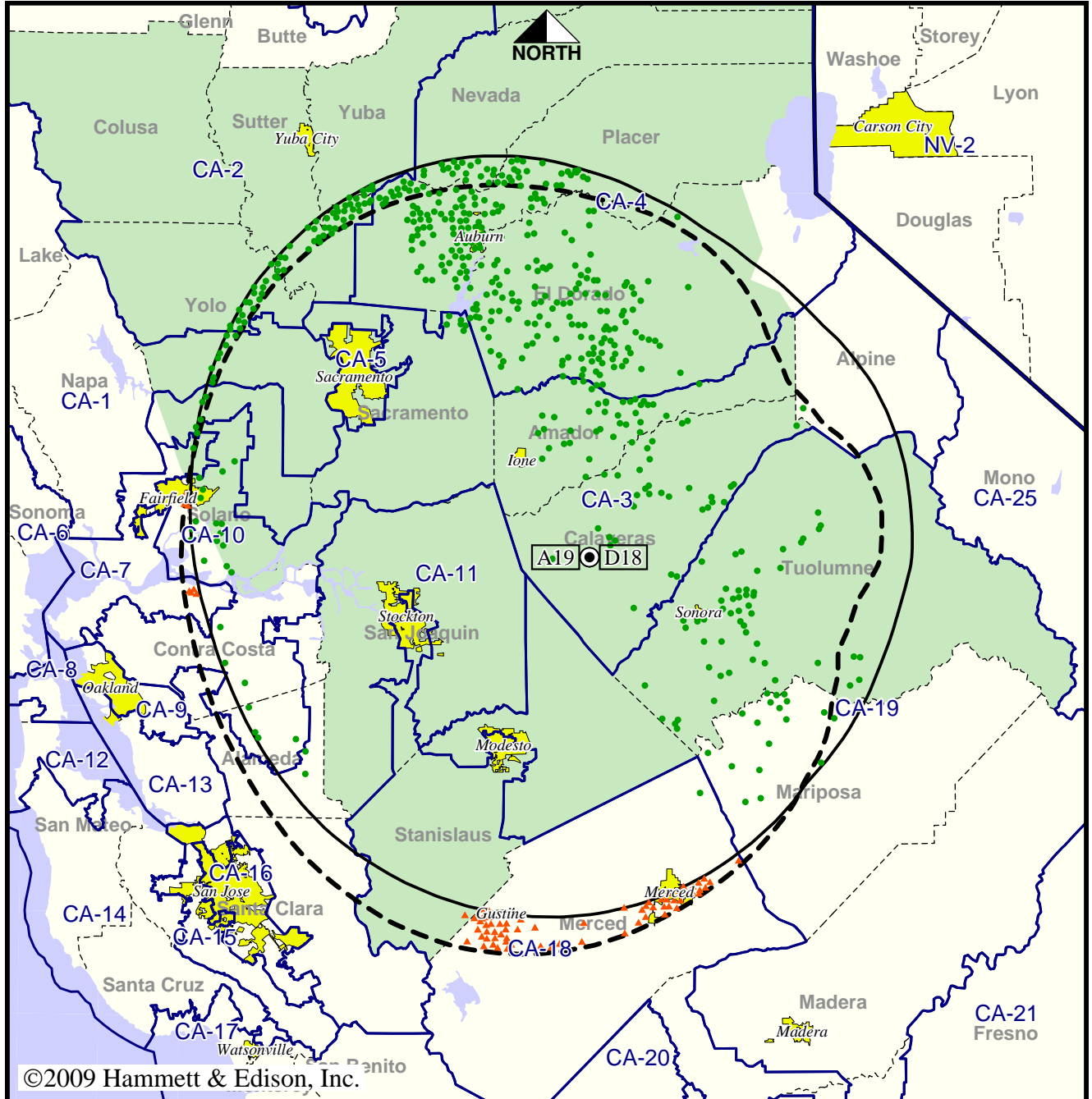


Station KUVS-TV • Analog Channel 19, DTV Channel 18 • Modesto, CA

Expected Operation on June 13: Licensed

Digital License (solid): 500 kW ERP at 555 m HAAT  
 vs. Analog (dashed): 5000 kW ERP at 576 m HAAT

Market: Sacramento-Stockton-Modesto, CA



©2009 Hammett & Edison, Inc.

- Coverage gained after DTV transition
- No symbol = no change in coverage
- ▲ Coverage lost after DTV transition

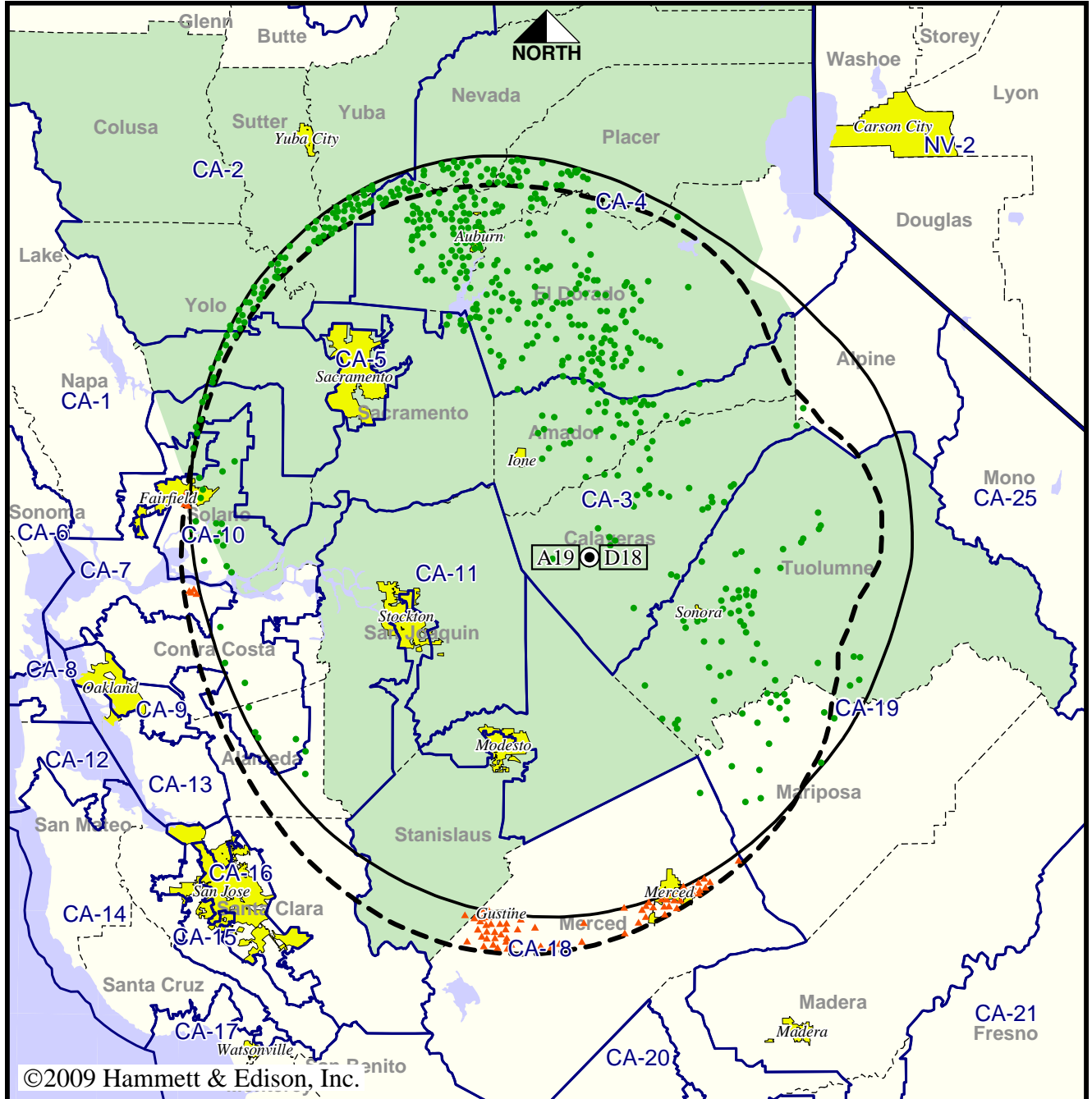
Analog service	3,194,789 persons
Digital service	3,327,993
Analog loss	58,872
Digital gain	192,076
Net gain	133,204

Station KUVS-TV • Analog Channel 19, DTV Channel 18 • Modesto, CA

Approved Post-Transition Operation: Licensed

Digital License (solid): 500 kW ERP at 555 m HAAT  
 vs. Analog (dashed): 5000 kW ERP at 576 m HAAT

Market: Sacramento-Stockton-Modesto, CA



©2009 Hammett & Edison, Inc.

- Coverage gained after DTV transition
- No symbol = no change in coverage
- ▲ Coverage lost after DTV transition

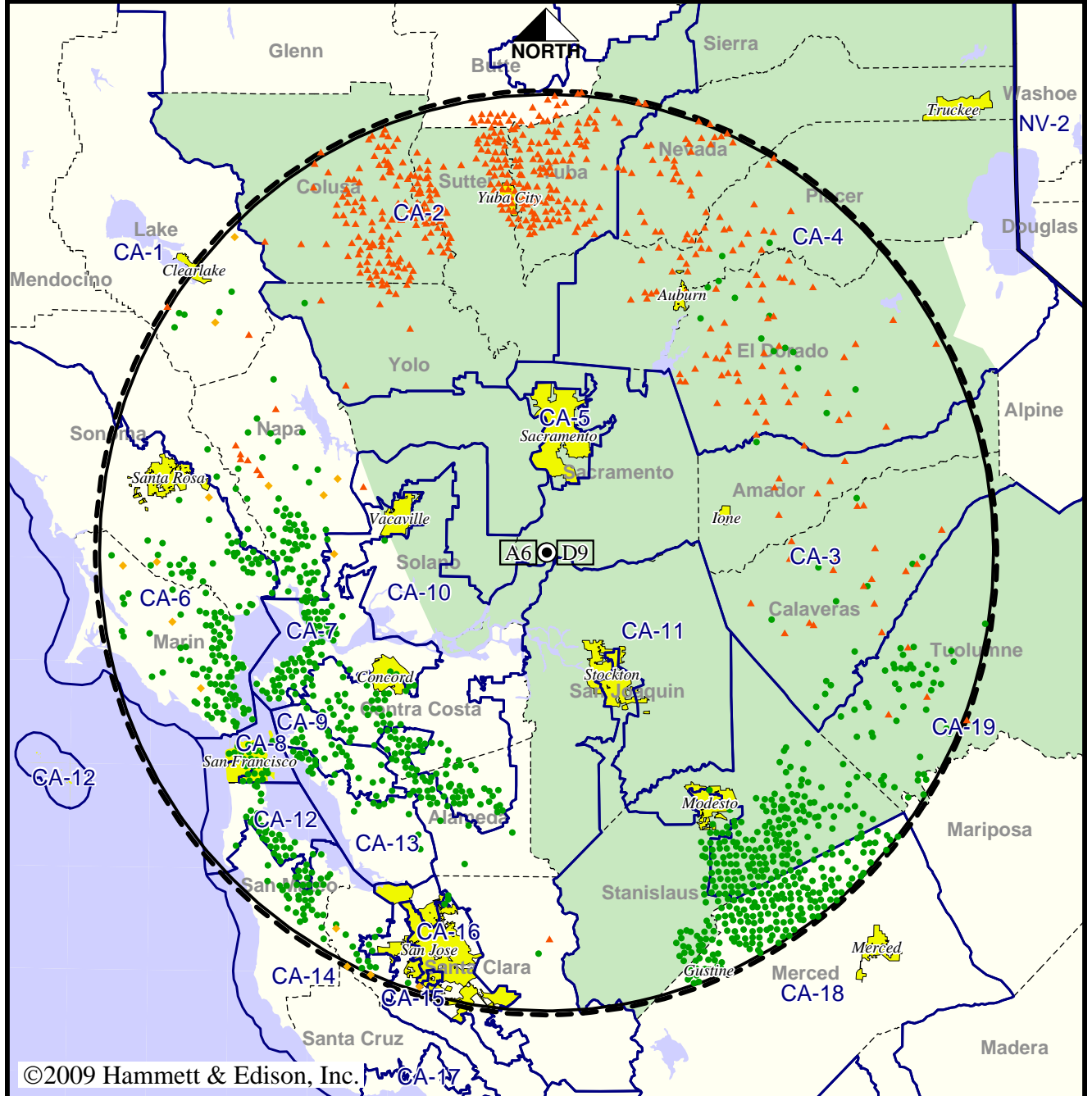
Analog service	3,194,789 persons
Digital service	3,327,993
Analog loss	58,872
Digital gain	192,076
Net gain	133,204

TV Station KVIE • Analog Channel 6, DTV Channel 9 • Sacramento, CA

Expected Operation on June 13: Granted Construction Permit

Digital CP (solid): 33.0 kW ERP at 597 m HAAT, Network: PBS  
 vs. Analog (dashed): 100 kW ERP at 550 m HAAT, Network: PBS

Market: Sacramento-Stockton-Modesto, CA



©2009 Hammett & Edison, Inc.

10 MI 0 10 20 30 40 50 60 70 100 80 60 40 20 0 KM 20

- Coverage gained after DTV transition
- No symbol = no change in coverage
- ◆ Coverage lost but still served by same network
- ▲ Coverage lost and no other service by same network

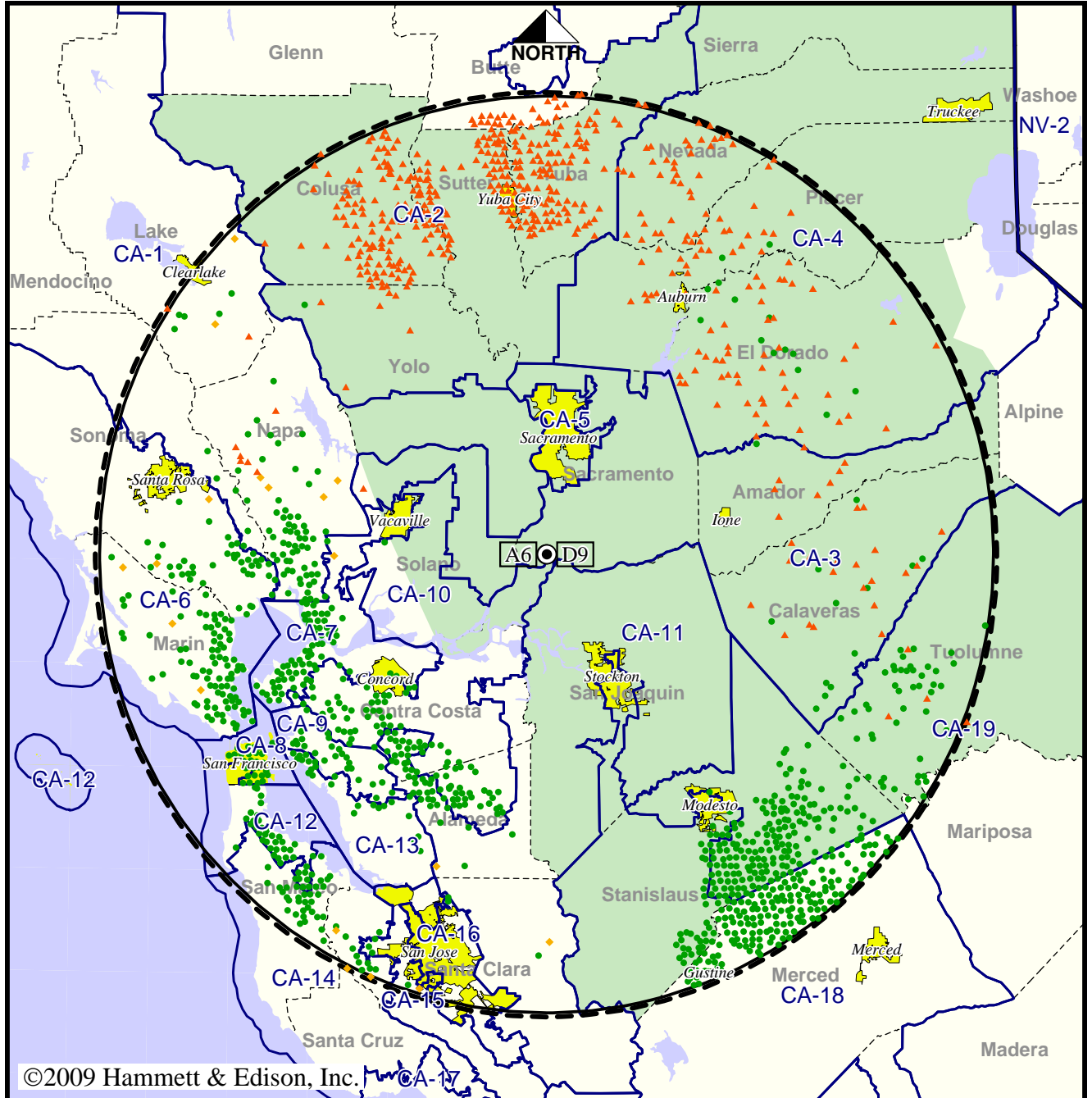
Analog service	3,729,766 persons
Digital service	5,909,400
Analog loss	181,229
Digital gain	2,360,863
Net gain	2,179,634

TV Station KVIE • Analog Channel 6, DTV Channel 9 • Sacramento, CA

Approved Post-Transition Operation: Granted Construction Permit

Digital CP (solid): 33.0 kW ERP at 597 m HAAT, Network: PBS  
 vs. Analog (dashed): 100 kW ERP at 550 m HAAT, Network: PBS

Market: Sacramento-Stockton-Modesto, CA



©2009 Hammett & Edison, Inc.



- Coverage gained after DTV transition
- No symbol = no change in coverage
- ◆ Coverage lost but still served by same network
- ▲ Coverage lost and no other service by same network

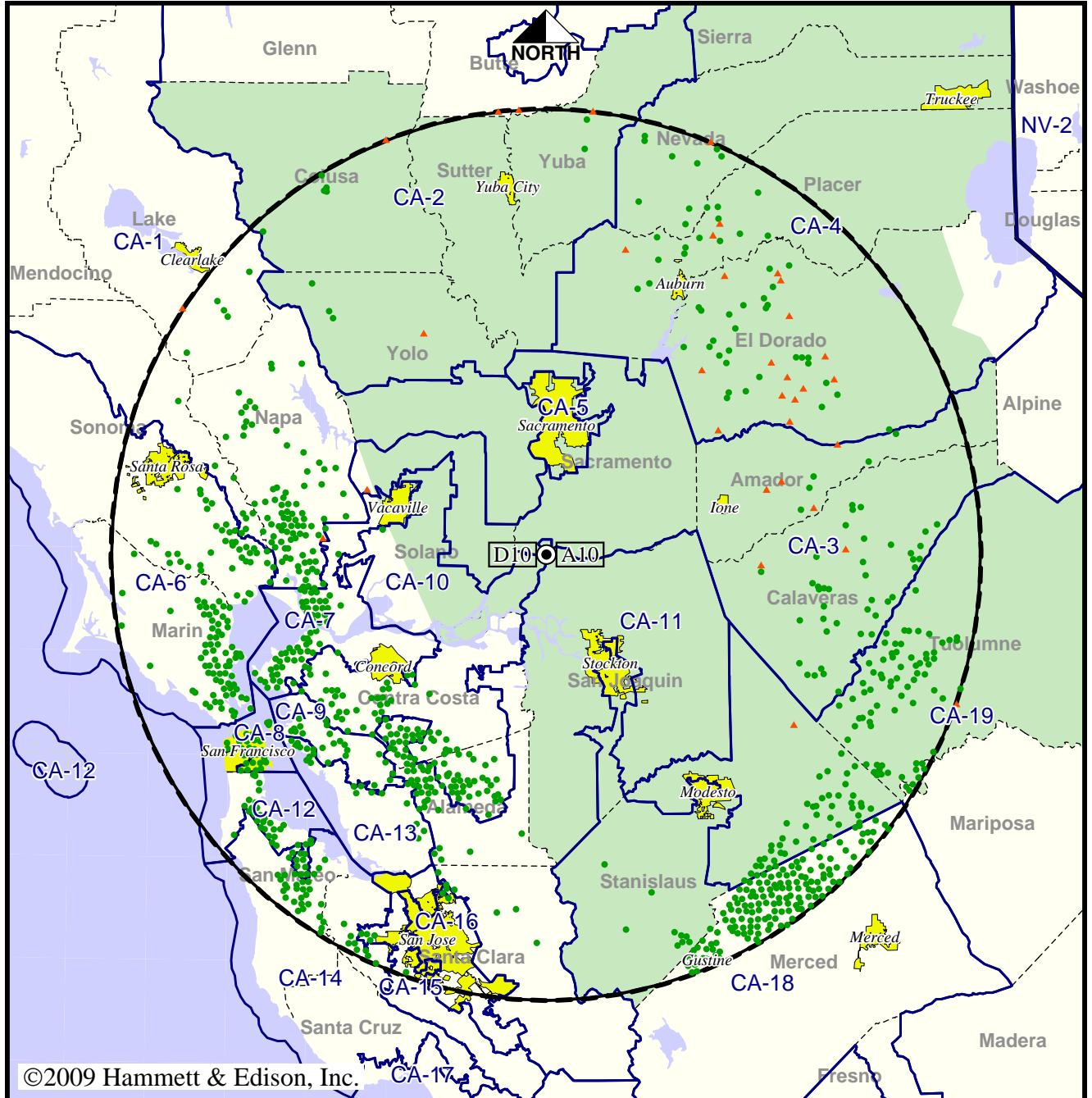
Analog service	3,729,766 persons
Digital service	5,906,232
Analog loss	181,629
Digital gain	2,358,095
Net gain	2,176,466

TV Station KXTV • Analog Channel 10, DTV Channel 10 • Sacramento, CA

Expected Operation on June 13: Granted Construction Permit

Digital CP (solid): 22.0 kW ERP at 612 m HAAT, Network: ABC  
 vs. Analog (dashed): 314 kW ERP at 612 m HAAT, Network: ABC

Market: Sacramento-Stockton-Modesto, CA



©2009 Hammett & Edison, Inc.

10 MI 0 10 20 30 40 50 60 70 100 80 60 40 20 0 KM 20

- Coverage gained after DTV transition
- No symbol = no change in coverage
- ▲ Coverage lost after DTV transition

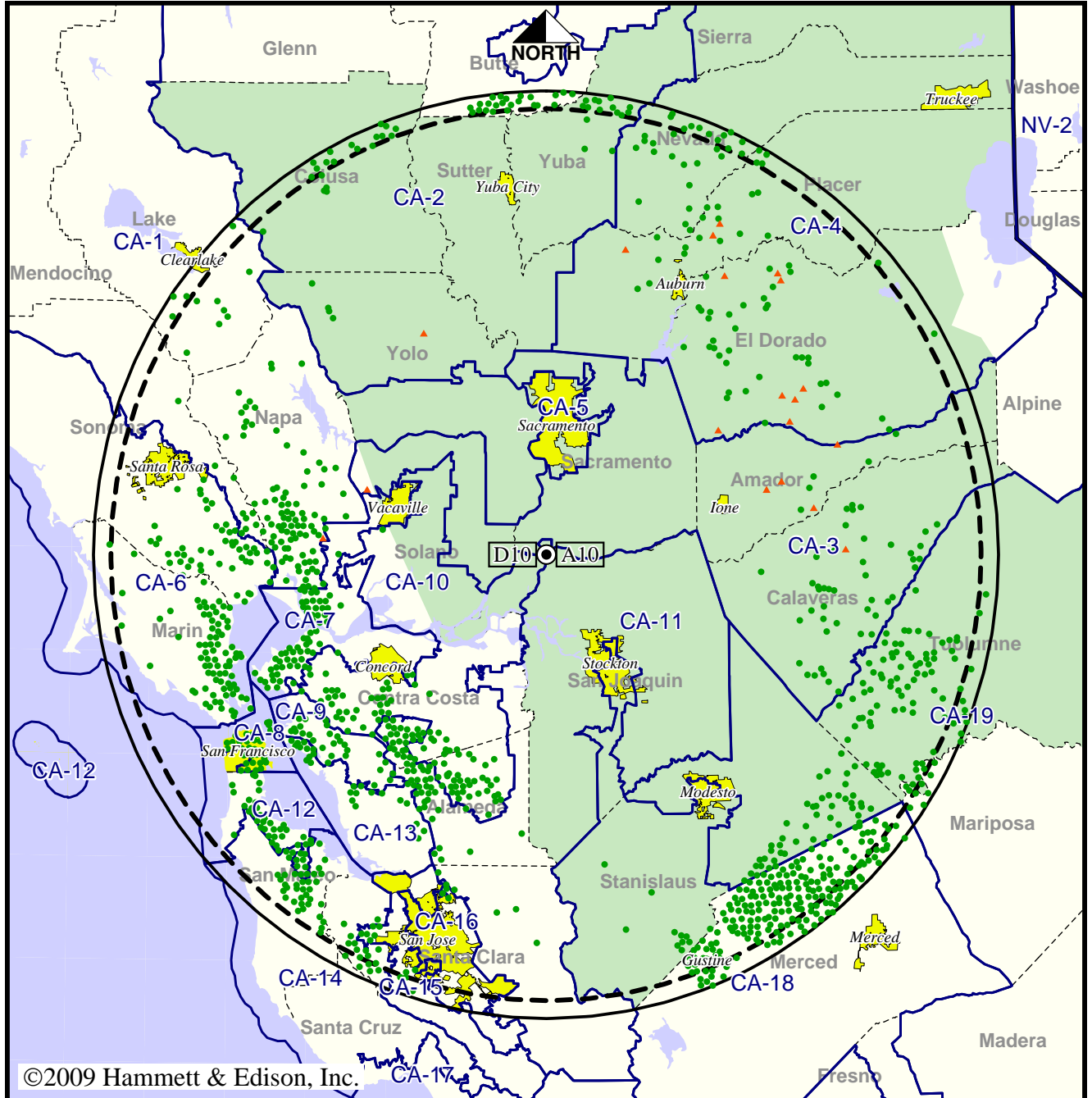
Analog service	3,839,621 persons
Digital service	5,964,615
Analog loss	6,859
Digital gain	2,131,853
Net gain	2,124,994

TV Station KXTV • Analog Channel 10, DTV Channel 10 • Sacramento, CA

Approved Post-Transition Operation: Granted Construction Permit

Digital CP (solid): 34.5 kW ERP at 612 m HAAT, Network: ABC  
 vs. Analog (dashed): 314 kW ERP at 612 m HAAT, Network: ABC

Market: Sacramento-Stockton-Modesto, CA



©2009 Hammett & Edison, Inc.

- Coverage gained after DTV transition
- No symbol = no change in coverage
- ▲ Coverage lost after DTV transition

Analog service	3,839,621 persons
Digital service	6,319,297
Analog loss	3,285
Digital gain	2,482,961
Net gain	2,479,676