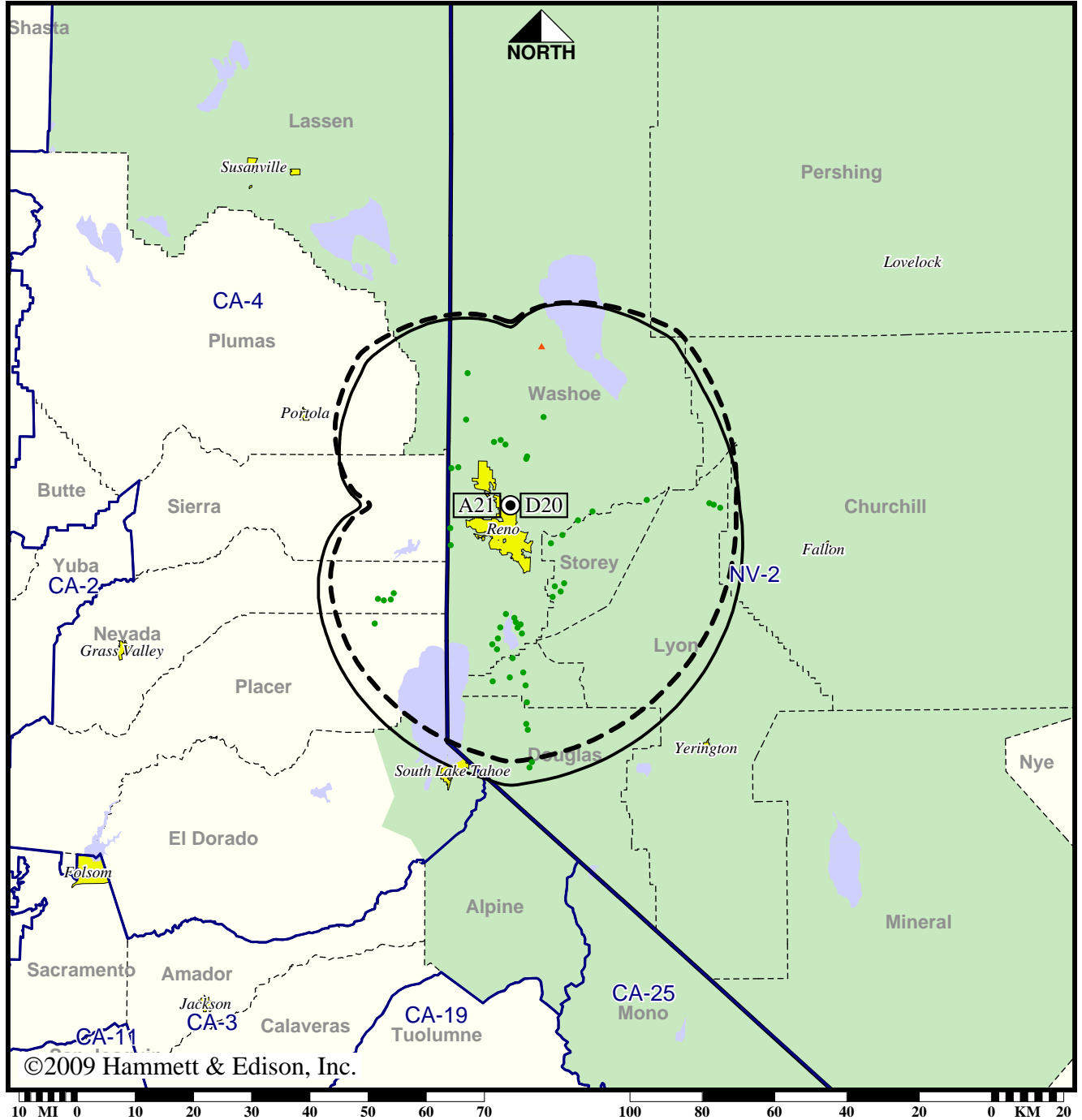


Station KAME-TV • Analog Channel 21, DTV Channel 20 • Reno, NV

Expected Operation on June 13: Licensed

Digital License (solid): 53.0 kW ERP at 176 m HAAT
 vs. Analog (dashed): 631 kW ERP at 189 m HAAT

Market: Reno, NV



©2009 Hammett & Edison, Inc.

- Coverage gained after DTV transition
- No symbol = no change in coverage
- ▲ Coverage lost after DTV transition

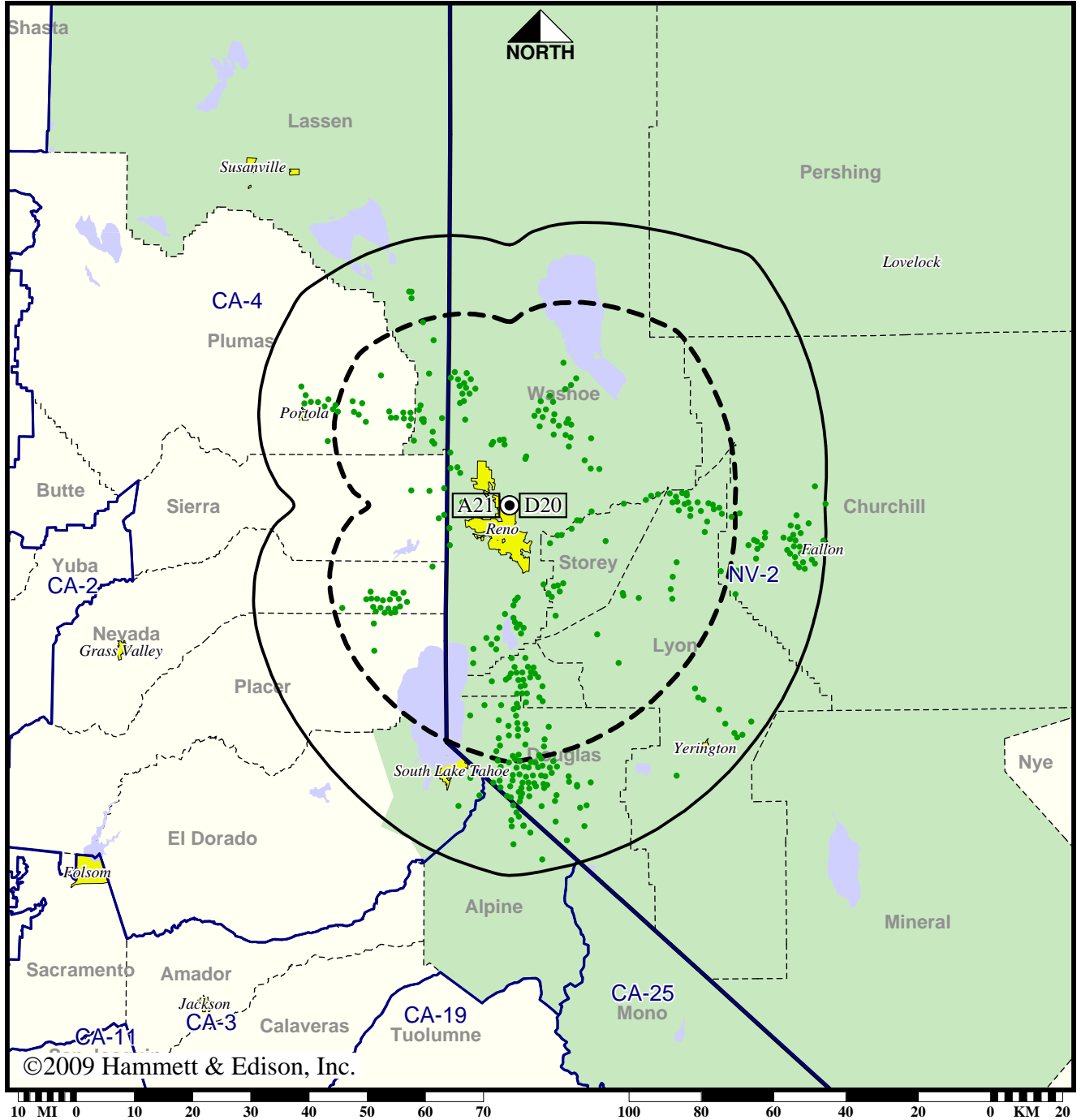
Analog service	325,210 persons
Digital service	348,076
Analog loss	2
Digital gain	22,868
Net gain	22,866

Station KAME-TV • Analog Channel 21, DTV Channel 20 • Reno, NV

Approved Post-Transition Operation: Granted Construction Permit

Digital CP (solid): 1000 kW ERP at 187 m HAAT
 vs. Analog (dashed): 631 kW ERP at 189 m HAAT

Market: Reno, NV



©2009 Hammett & Edison, Inc.

- Coverage gained after DTV transition
- No symbol = no change in coverage

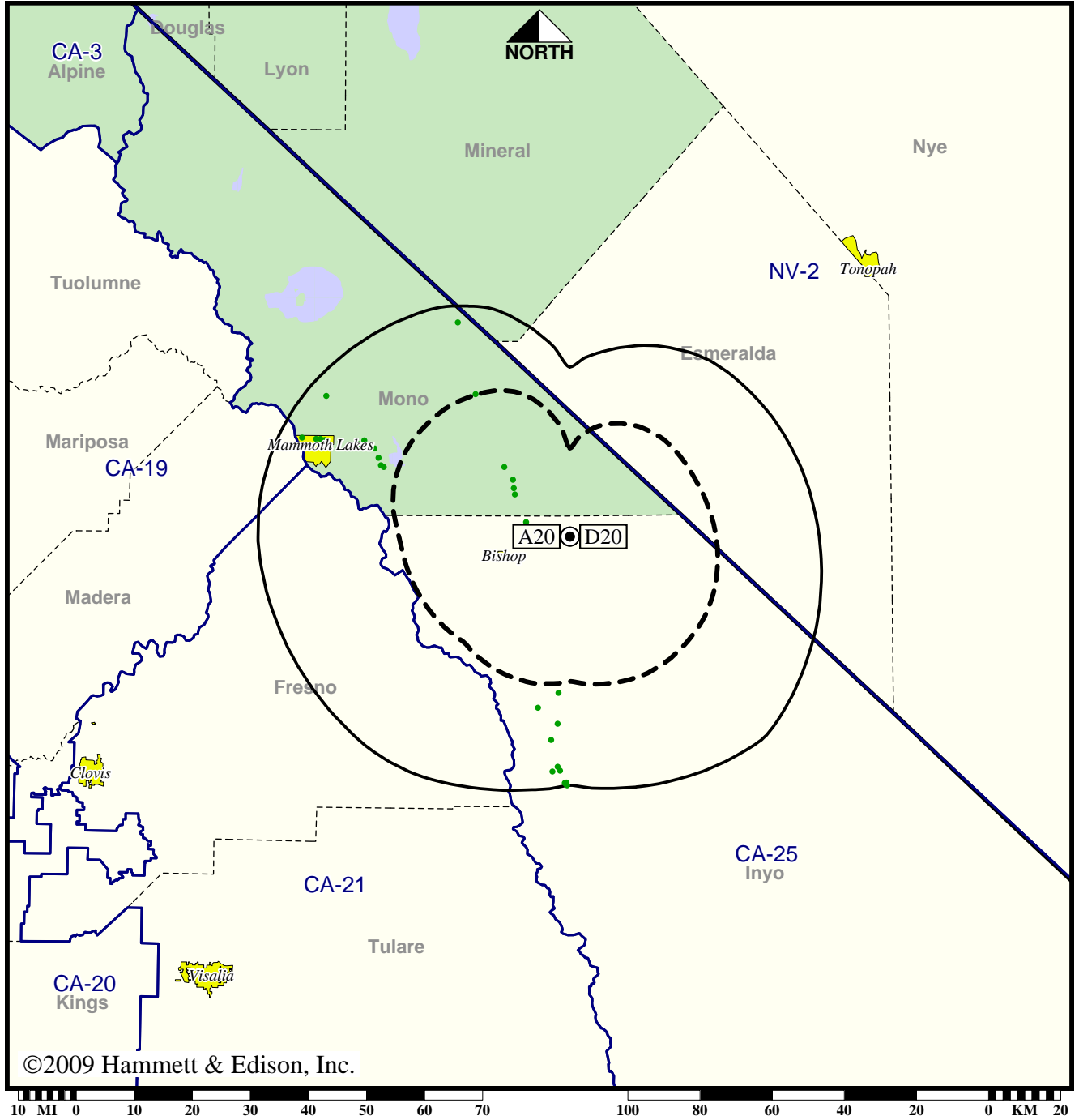
Analog service	325,210 persons
Digital service	441,174
Analog loss	0
Digital gain	115,964
Net gain	115,964

Station KBBC-TV • Analog Channel 20, DTV Channel 20 • Bishop, CA

Expected Operation on June 13: Granted Construction Permit

Digital CP (solid): 1.90 kW ERP at 924 m HAAT
 vs. Analog (dashed): 4.20 kW ERP at 924 m HAAT

Market: Reno, NV



©2009 Hammett & Edison, Inc.

● Coverage gained after DTV transition
 No symbol = no change in coverage

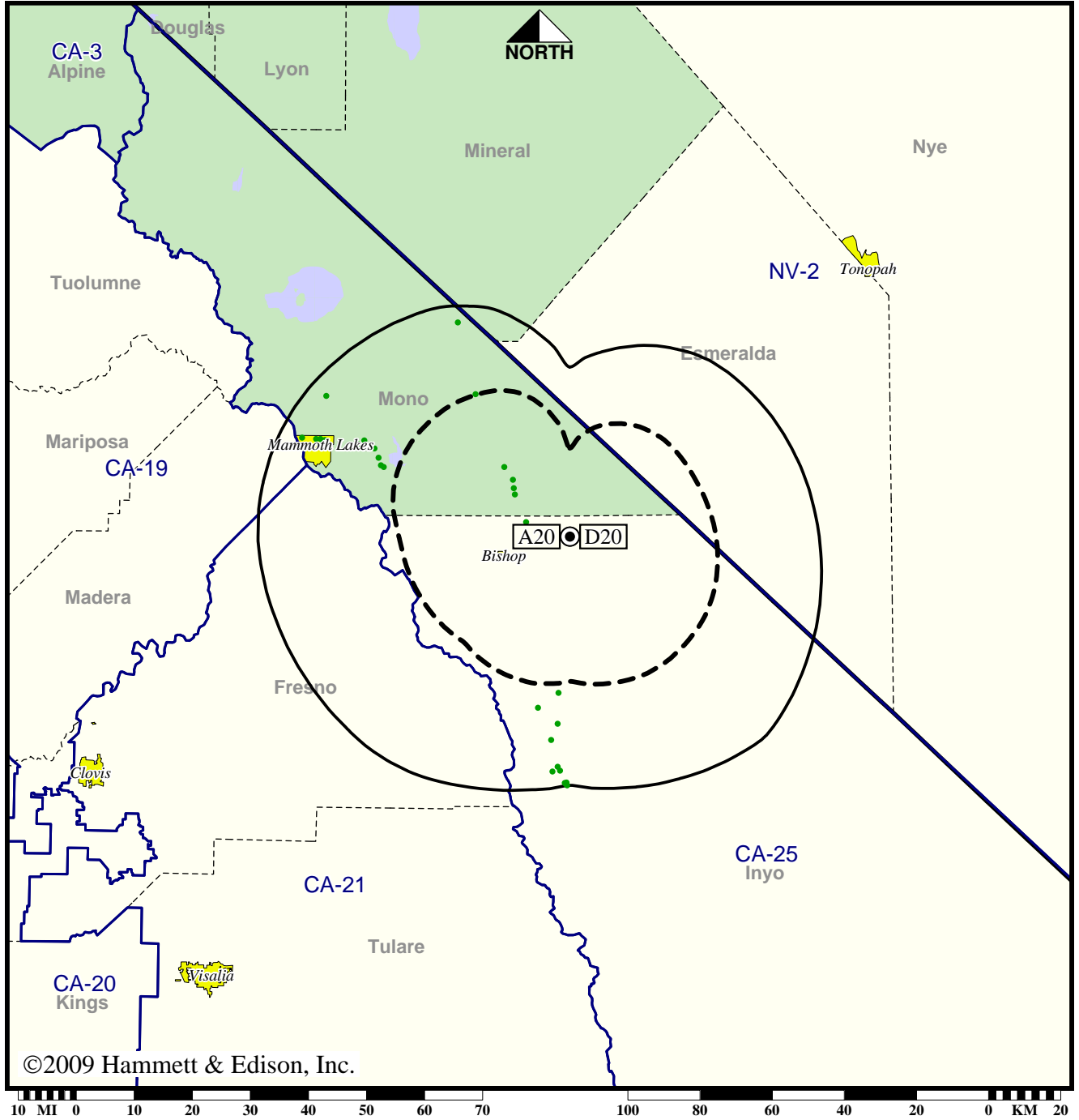
Analog service	13,464 persons
Digital service	19,527
Analog loss	0
Digital gain	6,063
Net gain	6,063

Station KBBC-TV • Analog Channel 20, DTV Channel 20 • Bishop, CA

Approved Post-Transition Operation: Granted Construction Permit

**Digital CP (solid): 1.90 kW ERP at 924 m HAAT
vs. Analog (dashed): 4.20 kW ERP at 924 m HAAT**

Market: Reno, NV



©2009 Hammett & Edison, Inc.

● Coverage gained after DTV transition
No symbol = no change in coverage

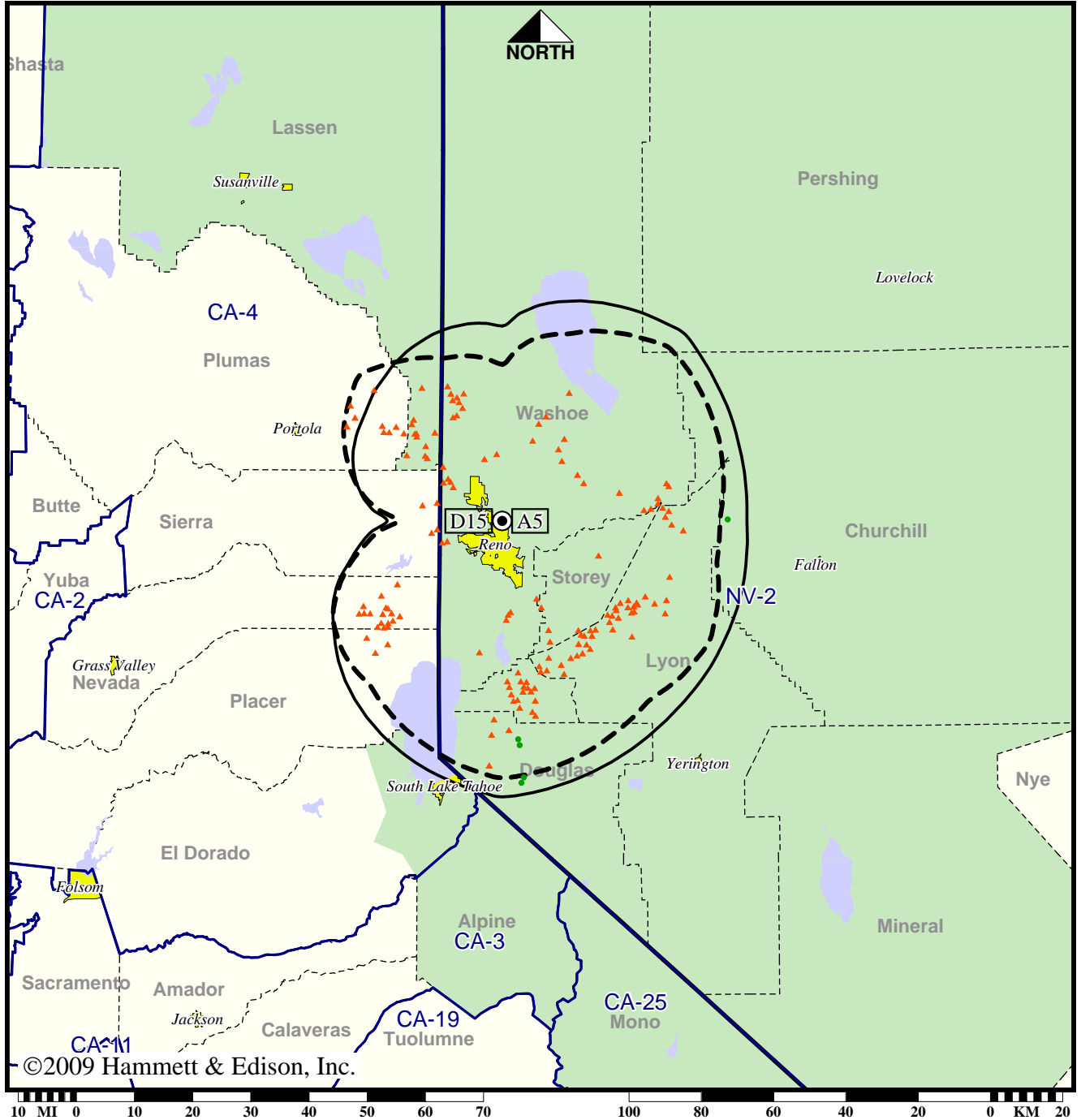
Analog service	13,464 persons
Digital service	19,527
Analog loss	0
Digital gain	6,063
Net gain	6,063

TV Station KNPB • Analog Channel 5, DTV Channel 15 • Reno, NV

Expected Operation on June 13: Licensed

Digital License (solid): 32.3 kW ERP at 149 m HAAT, Network: PBS
 vs. Analog (dashed): 4.61 kW ERP at 145 m HAAT, Network: PBS

Market: Reno, NV



©2009 Hammett & Edison, Inc.

- Coverage gained after DTV transition
- No symbol = no change in coverage
- ▲ Coverage lost after DTV transition

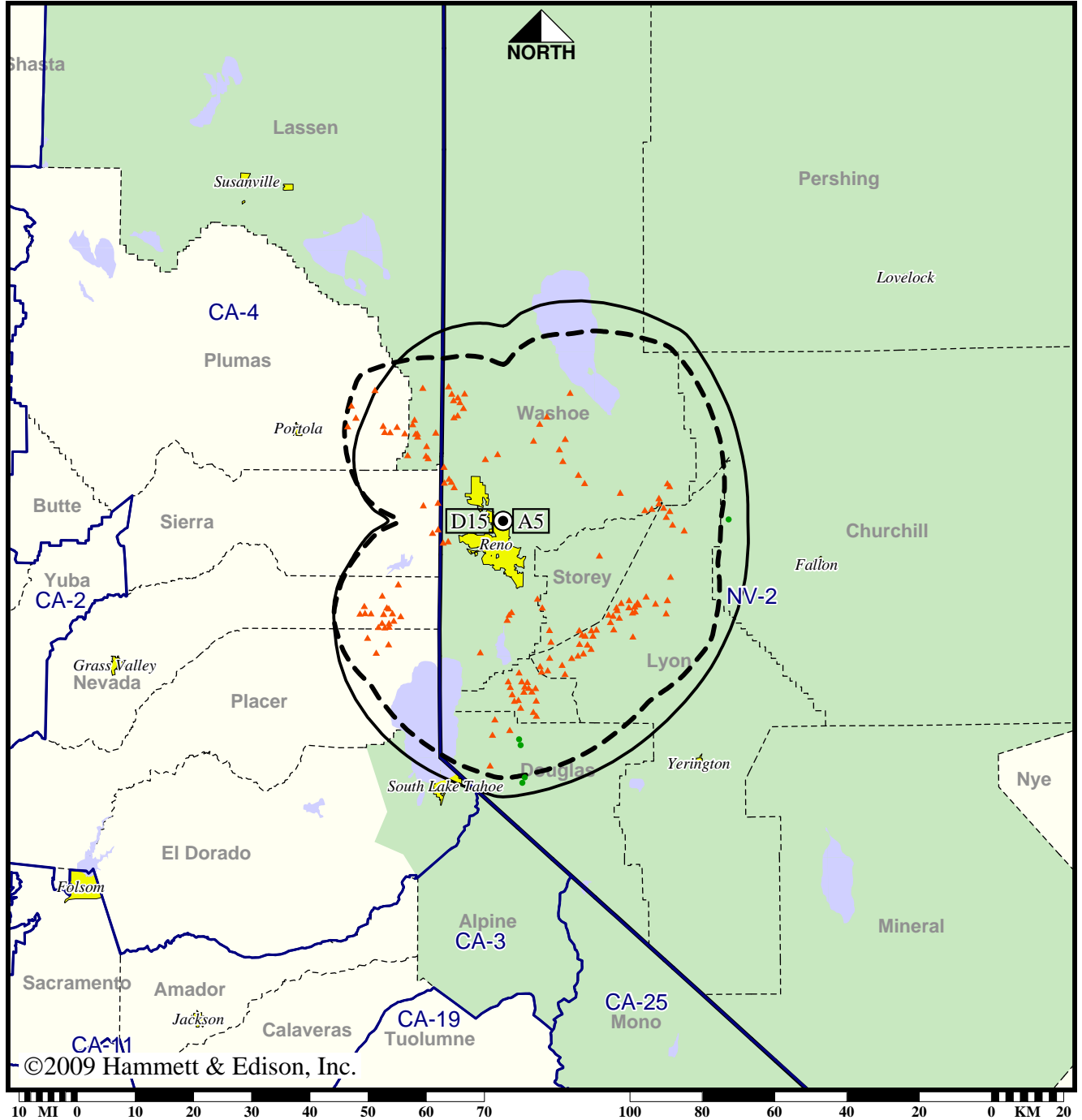
Analog service	400,841 persons
Digital service	349,835
Analog loss	54,427
Digital gain	3,421
Net gain	-51,006

TV Station KNPB • Analog Channel 5, DTV Channel 15 • Reno, NV

Approved Post-Transition Operation: Licensed

Digital License (solid): 32.3 kW ERP at 149 m HAAT, Network: PBS
 vs. Analog (dashed): 4.61 kW ERP at 145 m HAAT, Network: PBS

Market: Reno, NV



©2009 Hammett & Edison, Inc.

- Coverage gained after DTV transition
- No symbol = no change in coverage
- ▲ Coverage lost after DTV transition

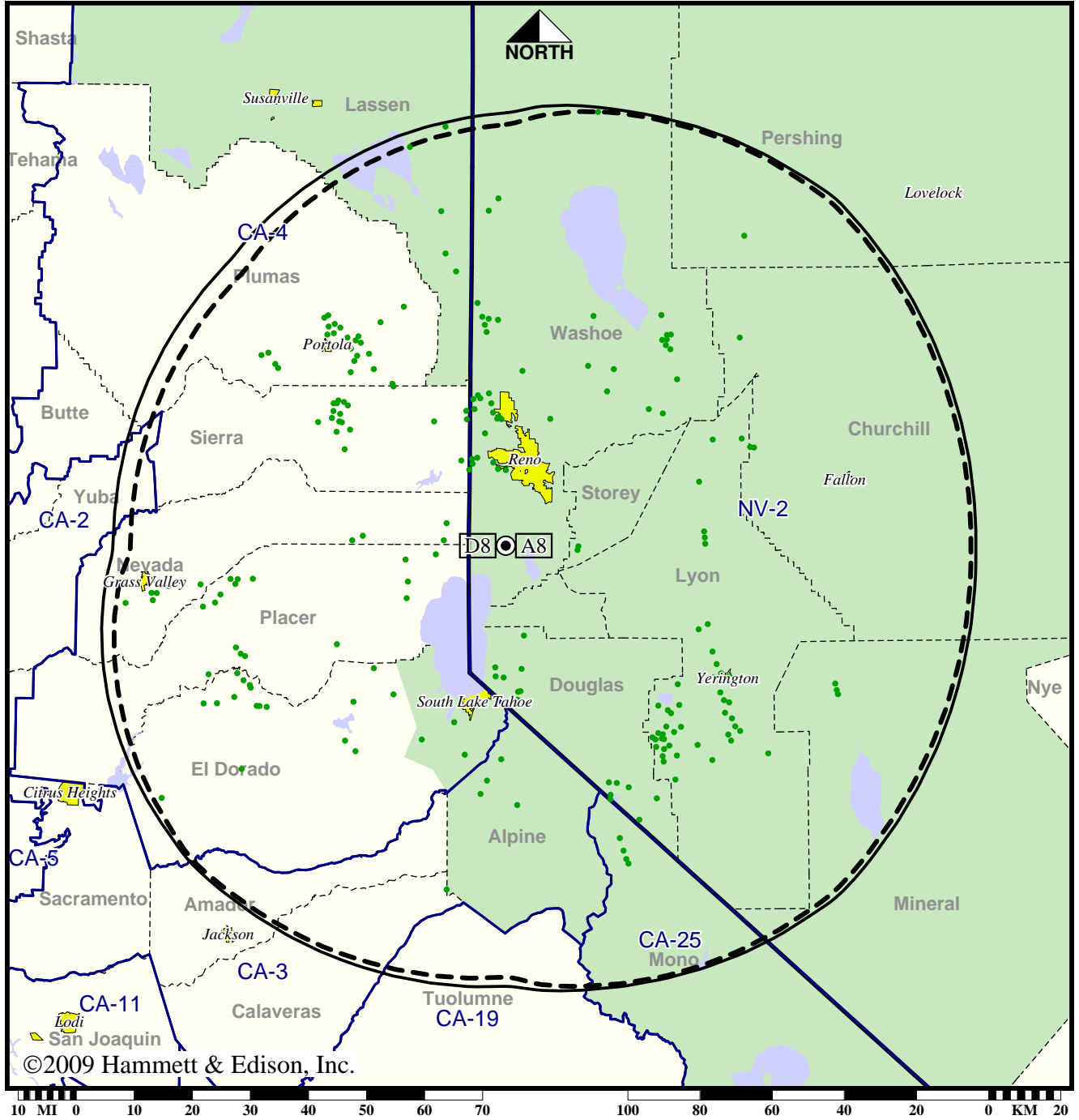
Analog service	400,841 persons
Digital service	349,835
Analog loss	54,427
Digital gain	3,421
Net gain	-51,006

Station KOLO-TV • Analog Channel 8, DTV Channel 8 • Reno, NV

Expected Operation on June 13: Granted Construction Permit

**Digital CP (solid): 15.6 kW ERP at 893 m HAAT, Network: ABC
vs. Analog (dashed): 166 kW ERP at 893 m HAAT, Network: ABC**

Market: Reno, NV



● Coverage gained after DTV transition
No symbol = no change in coverage

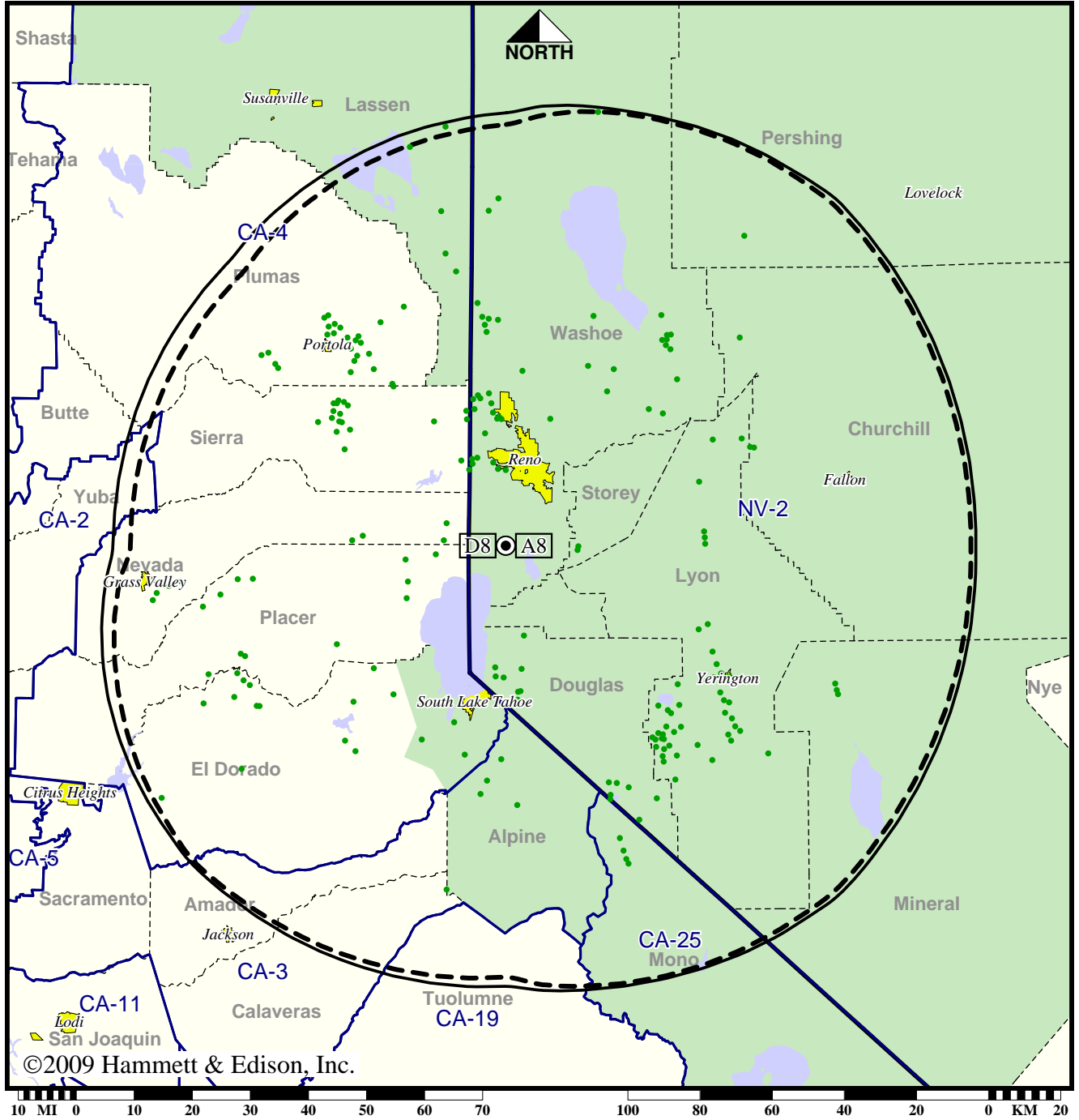
Analog service	530,388 persons
Digital service	558,391
Analog loss	0
Digital gain	28,003
Net gain	28,003

Station KOLO-TV • Analog Channel 8, DTV Channel 8 • Reno, NV

Approved Post-Transition Operation: Granted Construction Permit

**Digital CP (solid): 15.6 kW ERP at 893 m HAAT, Network: ABC
vs. Analog (dashed): 166 kW ERP at 893 m HAAT, Network: ABC**

Market: Reno, NV



● Coverage gained after DTV transition
No symbol = no change in coverage

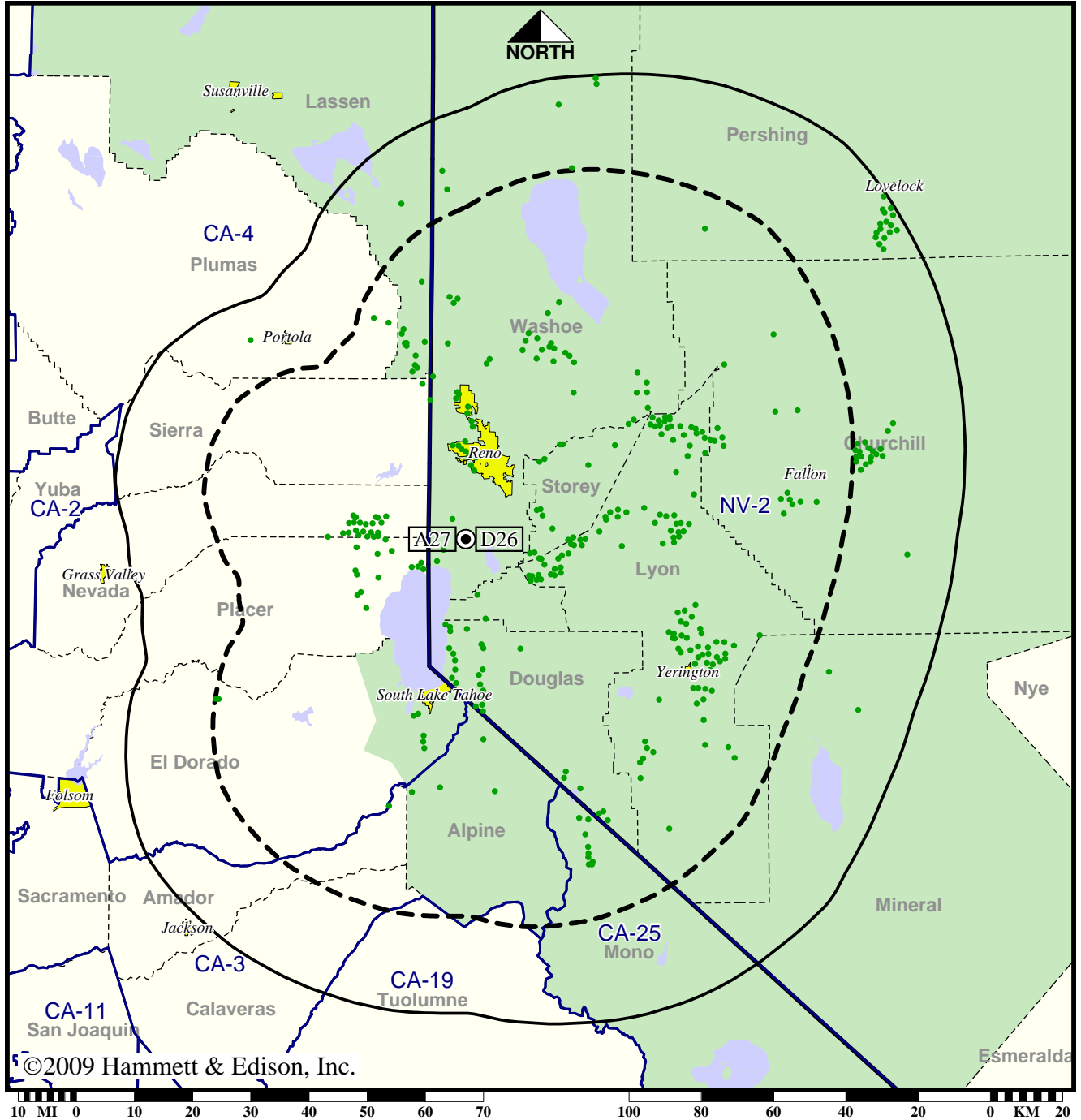
Analog service	530,388 persons
Digital service	557,655
Analog loss	0
Digital gain	27,267
Net gain	27,267

Station KREN-TV • Analog Channel 27, DTV Channel 26 • Reno, NV

Approved Post-Transition Operation: Granted Construction Permit

**Digital CP (solid): 1000 kW ERP at 896 m HAAT
vs. Analog (dashed): 1820 kW ERP at 891 m HAAT**

Market: Reno, NV



● Coverage gained after DTV transition
No symbol = no change in coverage

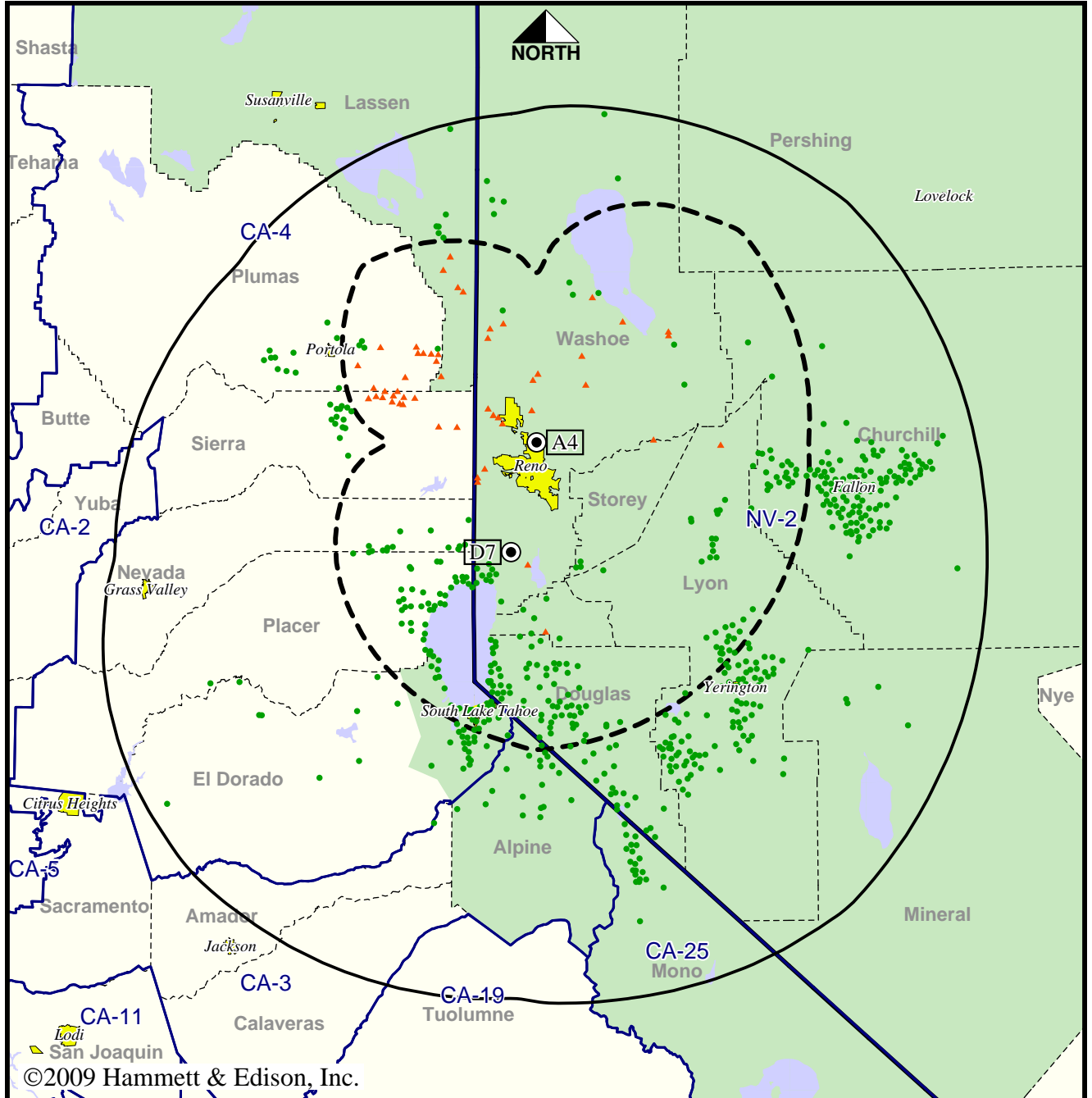
Analog service	448,014 persons
Digital service	527,068
Analog loss	0
Digital gain	79,054
Net gain	79,054

TV Station KRVN • Analog Channel 4, DTV Channel 7 • Reno, NV

Expected Operation on June 13: Licensed

Digital License (solid): 16.1 kW ERP at 879 m HAAT, Network: NBC
 vs. Analog (dashed): 17.4 kW ERP at 128 m HAAT, Network: NBC

Market: Reno, NV



©2009 Hammett & Edison, Inc.

- Coverage gained after DTV transition
- No symbol = no change in coverage
- ▲ Coverage lost after DTV transition

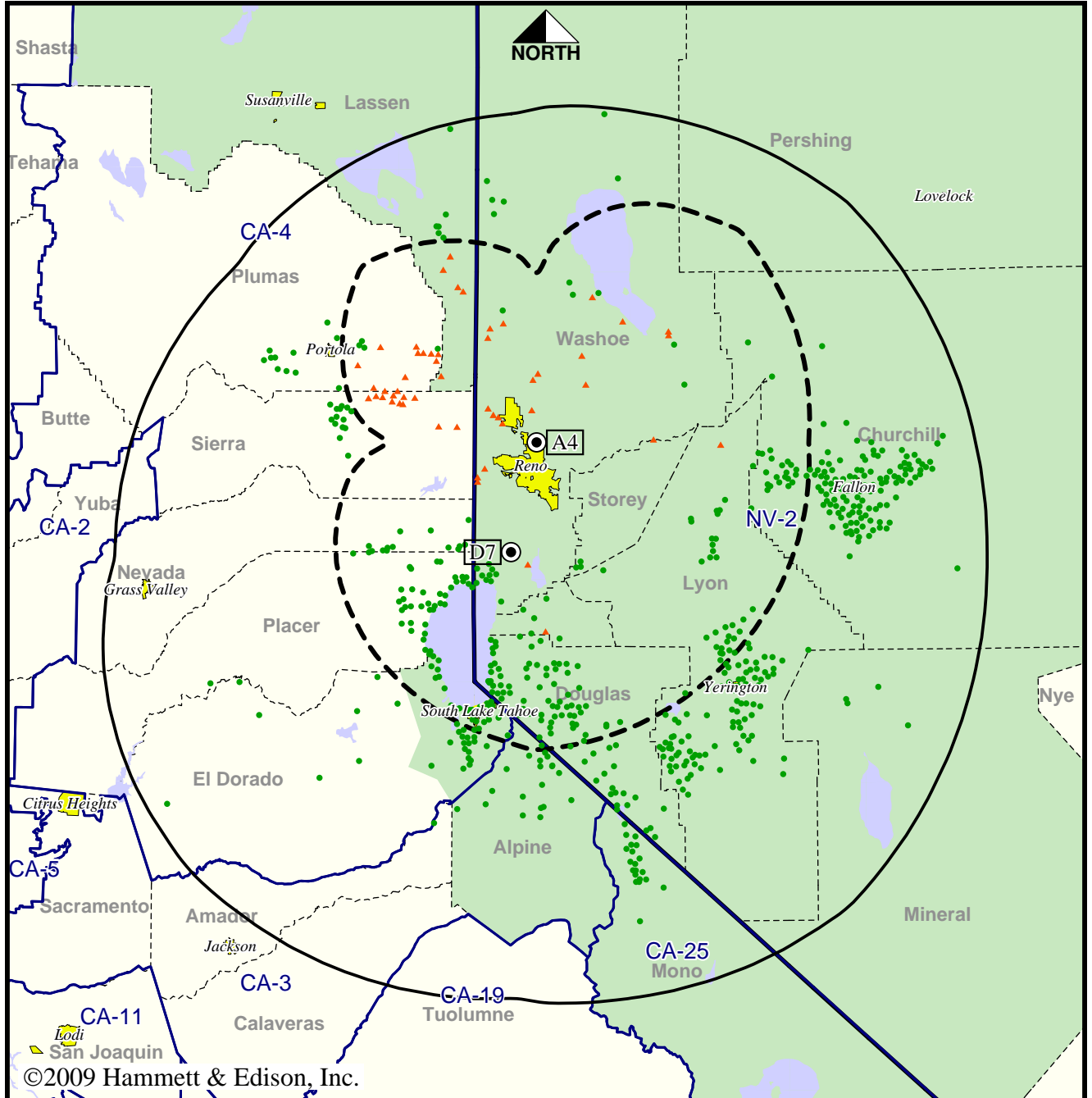
Analog service	442,216 persons
Digital service	556,964
Analog loss	4,475
Digital gain	119,223
Net gain	114,748

TV Station KRVN • Analog Channel 4, DTV Channel 7 • Reno, NV

Approved Post-Transition Operation: Licensed

Digital License (solid): 16.1 kW ERP at 879 m HAAT, Network: NBC
 vs. Analog (dashed): 17.4 kW ERP at 128 m HAAT, Network: NBC

Market: Reno, NV



- Coverage gained after DTV transition
- No symbol = no change in coverage
- ▲ Coverage lost after DTV transition

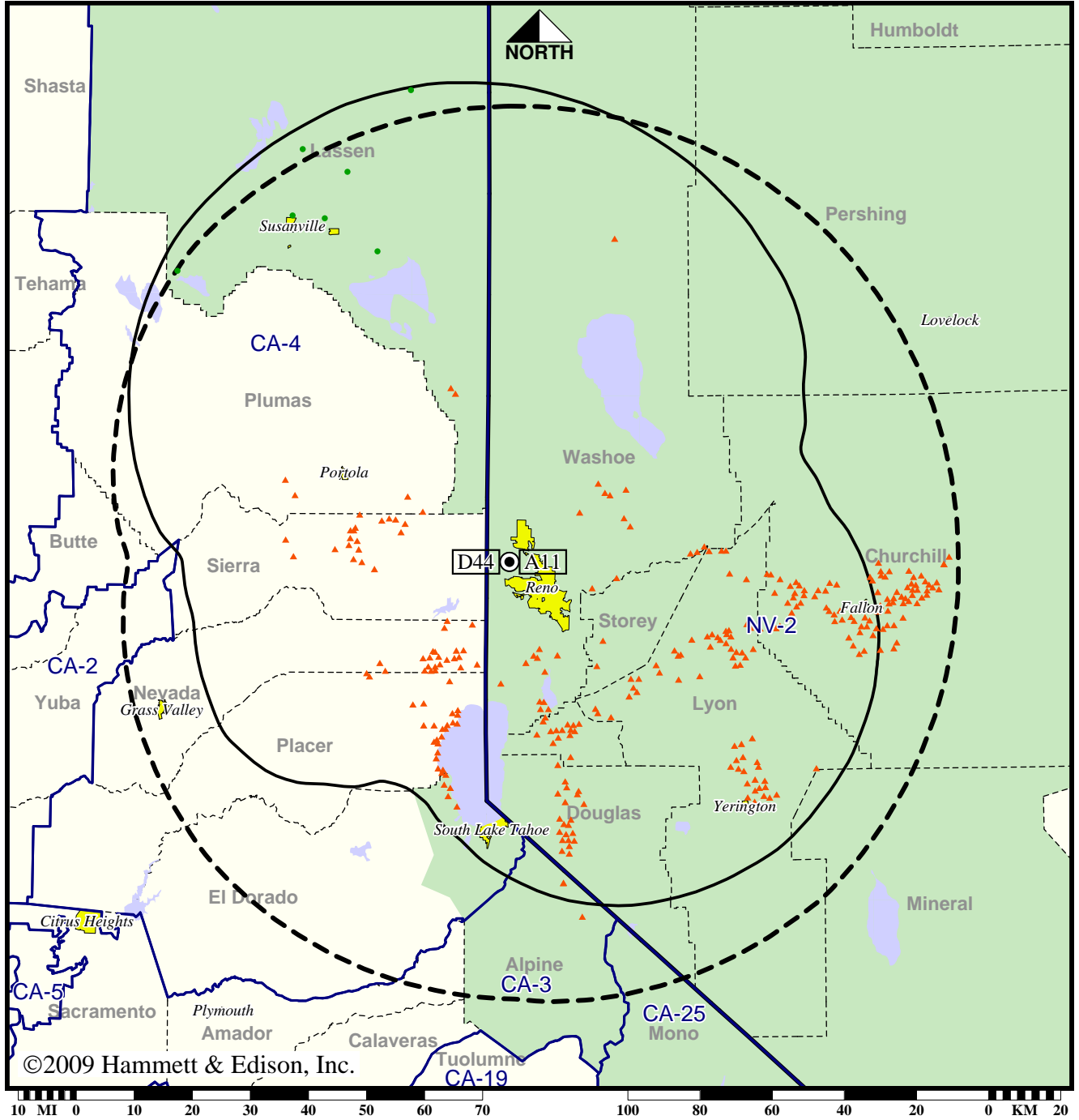
Analog service	442,216 persons
Digital service	556,953
Analog loss	4,475
Digital gain	119,212
Net gain	114,737

Station KRXI-TV • Analog Channel 11, DTV Channel 44 • Reno, NV

Expected Operation on June 13: Licensed

Digital License (solid): 1000 kW ERP at 836 m HAAT, Network: Fox
 vs. Analog (dashed): 178 kW ERP at 854 m HAAT, Network: Fox

Market: Reno, NV



©2009 Hammett & Edison, Inc.

- Coverage gained after DTV transition
- No symbol = no change in coverage
- ▲ Coverage lost after DTV transition

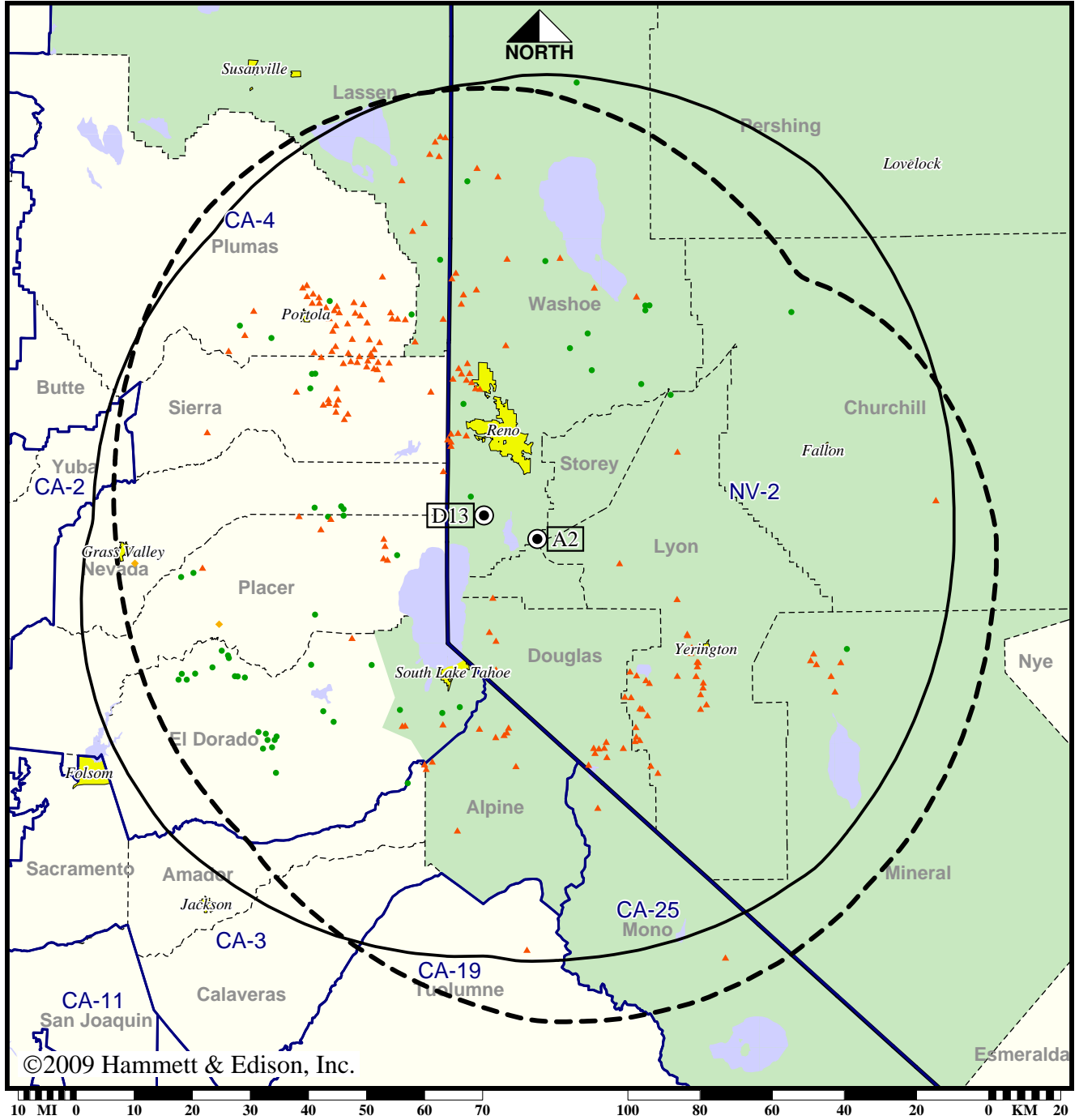
Analog service	462,654 persons
Digital service	381,249
Analog loss	81,803
Digital gain	398
Net gain	-81,405

TV Station KTVN • Analog Channel 2, DTV Channel 13 • Reno, NV

Expected Operation on June 13: Licensed

Digital License (solid): 16.1 kW ERP at 876 m HAAT, Network: CBS
 vs. Analog (dashed): 89.1 kW ERP at 656 m HAAT, Network: CBS

Market: Reno, NV



©2009 Hammett & Edison, Inc.

- Coverage gained after DTV transition
- No symbol = no change in coverage
- ◆ Coverage lost but still served by same network
- ▲ Coverage lost and no other service by same network

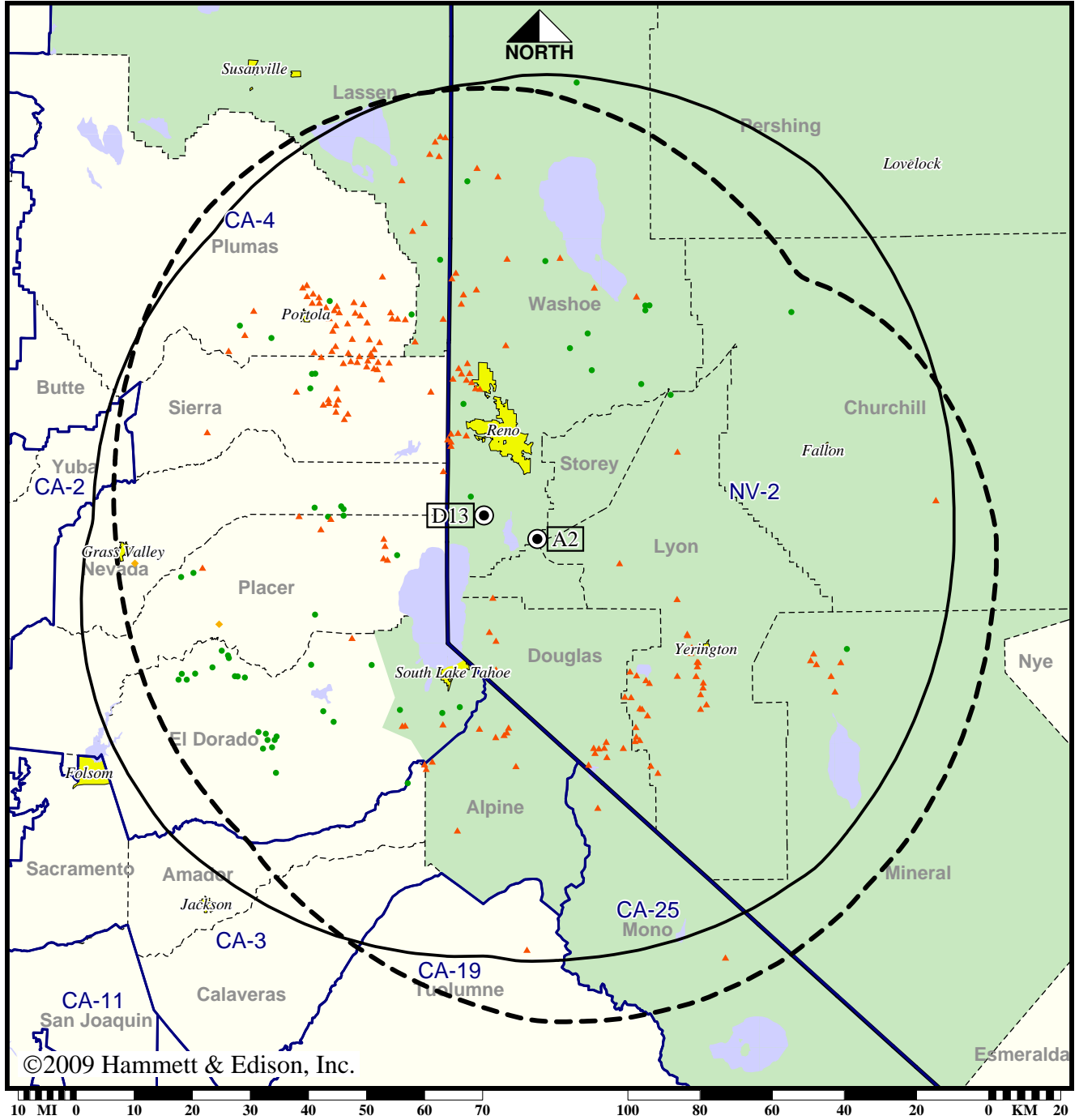
Analog service	562,414 persons
Digital service	552,266
Analog loss	17,558
Digital gain	7,410
Net gain	-10,148

TV Station KTVN • Analog Channel 2, DTV Channel 13 • Reno, NV

Approved Post-Transition Operation: Licensed

Digital License (solid): 16.1 kW ERP at 876 m HAAT, Network: CBS
 vs. Analog (dashed): 89.1 kW ERP at 656 m HAAT, Network: CBS

Market: Reno, NV



©2009 Hammett & Edison, Inc.

- Coverage gained after DTV transition
- No symbol = no change in coverage
- ◆ Coverage lost but still served by same network
- ▲ Coverage lost and no other service by same network

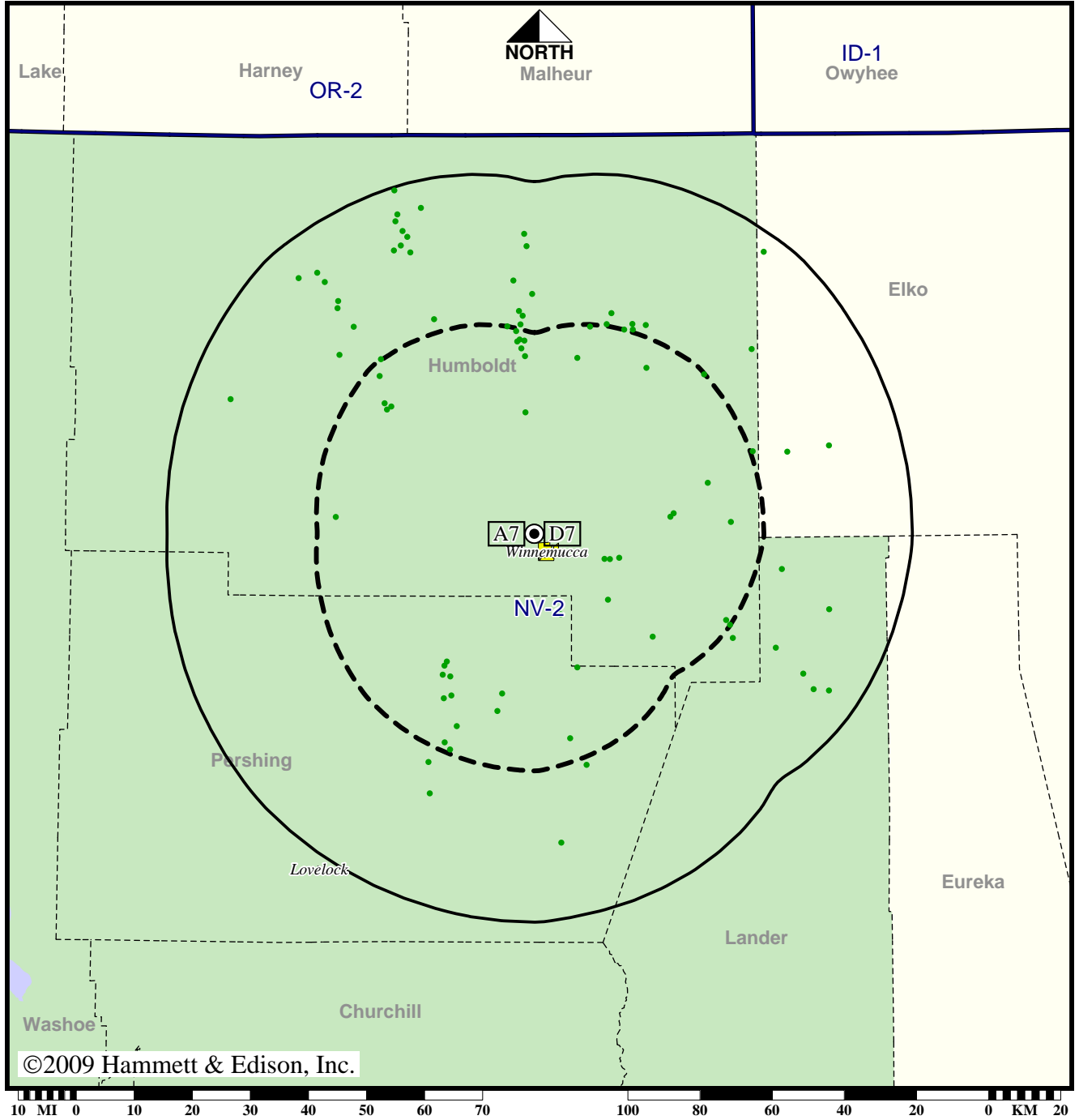
Analog service	562,414 persons
Digital service	552,266
Analog loss	17,558
Digital gain	7,410
Net gain	-10,148

TV Station KWNV • Analog Channel 7, DTV Channel 7 • Winnemucca, NV

Expected Operation on June 13: Granted Construction Permit

Digital CP (solid): 3.20 kW ERP at 659 m HAAT, Network: NBC
 vs. Analog (dashed): 0.890 kW ERP at 650 m HAAT, Network: NBC

Market: Reno, NV



©2009 Hammett & Edison, Inc.

- Coverage gained after DTV transition
- No symbol = no change in coverage

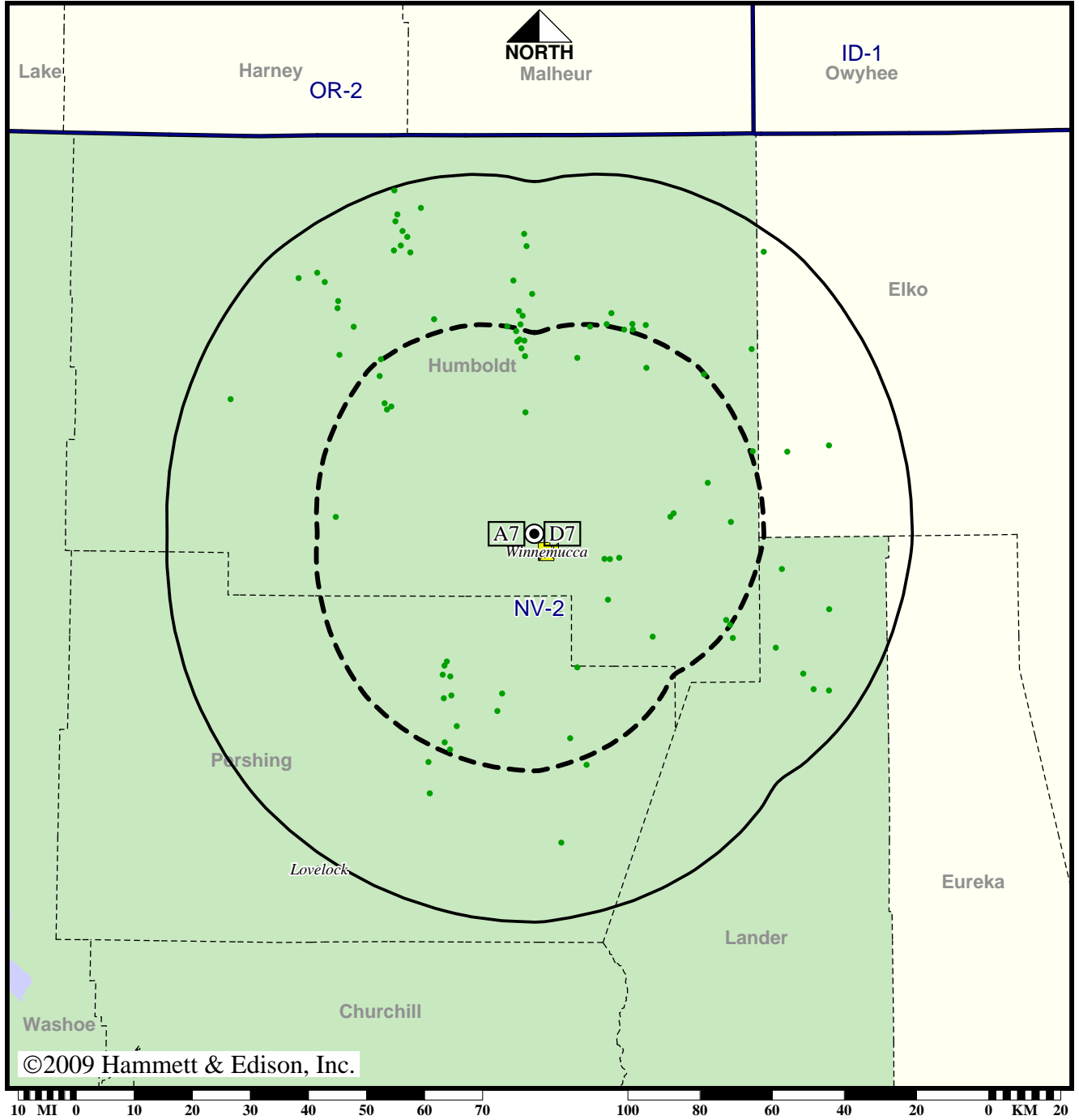
Analog service	15,931 persons
Digital service	17,195
Analog loss	0
Digital gain	1,264
Net gain	1,264

TV Station KWNV • Analog Channel 7, DTV Channel 7 • Winnemucca, NV

Approved Post-Transition Operation: Granted Construction Permit

Digital CP (solid): 3.20 kW ERP at 659 m HAAT, Network: NBC
 vs. Analog (dashed): 0.890 kW ERP at 650 m HAAT, Network: NBC

Market: Reno, NV



©2009 Hammett & Edison, Inc.

- Coverage gained after DTV transition
- No symbol = no change in coverage

Analog service	15,931 persons
Digital service	17,195
Analog loss	0
Digital gain	1,264
Net gain	1,264