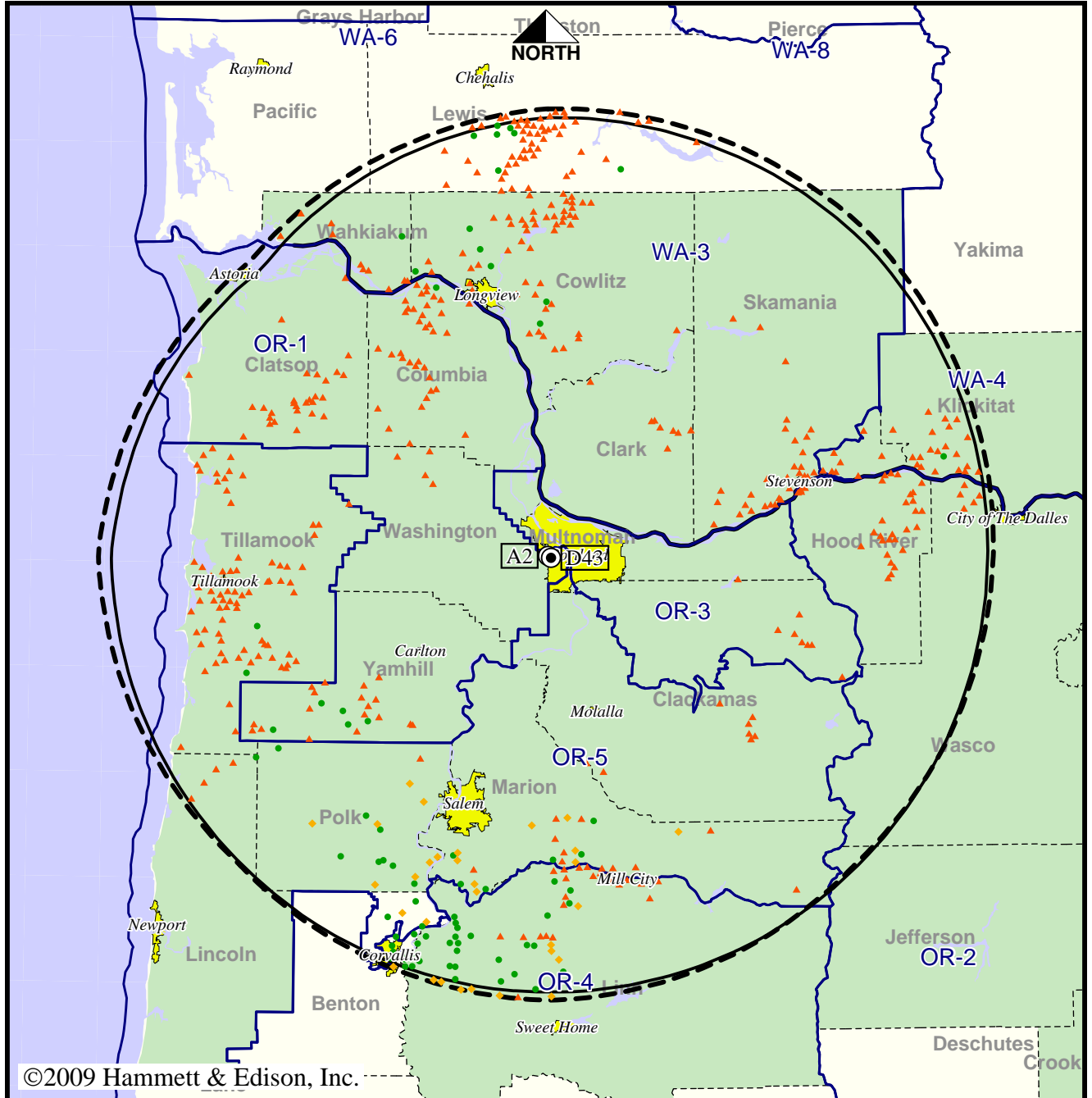


TV Station KATU • Analog Channel 2, DTV Channel 43 • Portland, OR

Expected Operation on June 13: Licensed

Digital License (solid): 1000 kW ERP at 524 m HAAT, Network: ABC  
 vs. Analog (dashed): 100 kW ERP at 475 m HAAT, Network: ABC

Market: Portland, OR



©2009 Hammett & Edison, Inc.

10 MI 0 10 20 30 40 50 100 80 60 40 20 0 KM 20

- Coverage gained after DTV transition
- No symbol = no change in coverage
- ◆ Coverage lost but still served by same network
- ▲ Coverage lost and no other service by same network

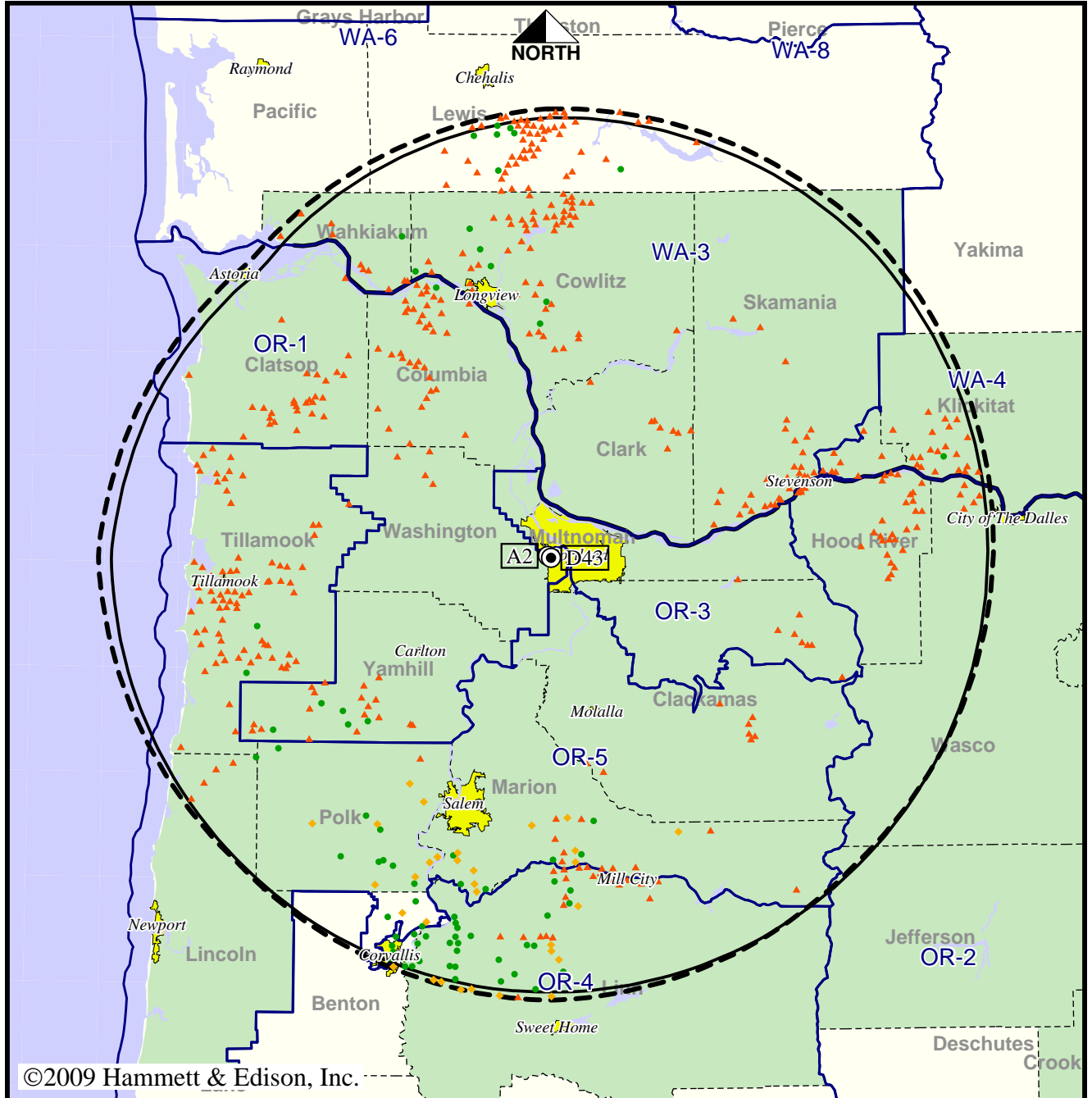
Analog service	2,461,927 persons
Digital service	2,434,935
Analog loss	53,397
Digital gain	26,405
Net gain	-26,992

TV Station KATU • Analog Channel 2, DTV Channel 43 • Portland, OR

Approved Post-Transition Operation: Licensed

Digital License (solid): 1000 kW ERP at 524 m HAAT, Network: ABC  
 vs. Analog (dashed): 100 kW ERP at 475 m HAAT, Network: ABC

Market: Portland, OR



©2009 Hammett & Edison, Inc.

10 MI 0 10 20 30 40 50 100 80 60 40 20 0 KM 20

- Coverage gained after DTV transition
- No symbol = no change in coverage
- ◆ Coverage lost but still served by same network
- ▲ Coverage lost and no other service by same network

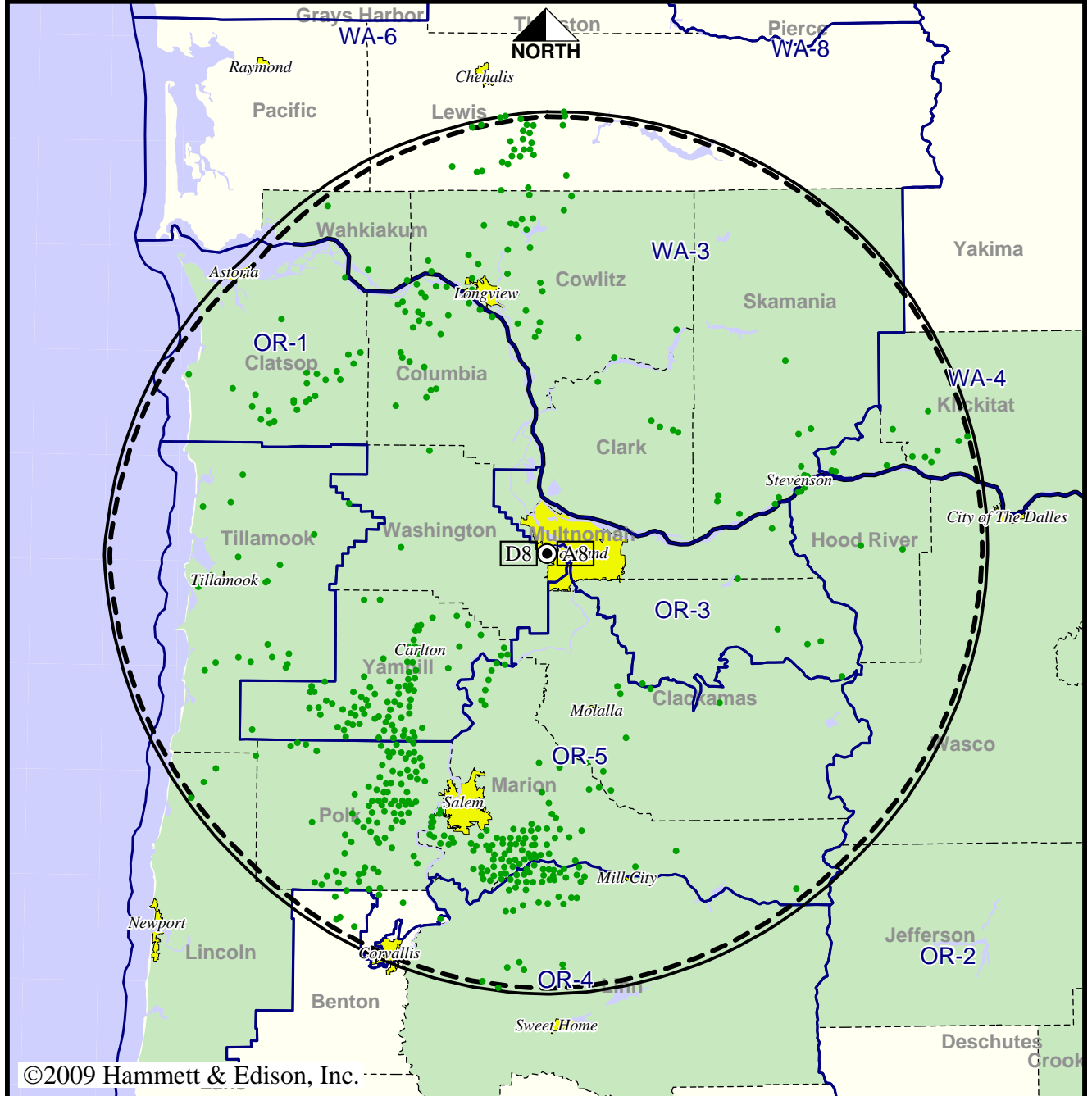
Analog service	2,461,927 persons
Digital service	2,434,935
Analog loss	53,397
Digital gain	26,405
Net gain	-26,992

TV Station KGW • Analog Channel 8, DTV Channel 8 • Portland, OR

Expected Operation on June 13: Granted Construction Permit

Digital CP (solid): 25.0 kW ERP at 524 m HAAT, Network: NBC  
 vs. Analog (dashed): 316 kW ERP at 524 m HAAT, Network: NBC

Market: Portland, OR



©2009 Hammett & Edison, Inc.

10 MI 0 10 20 30 40 50 100 80 60 40 20 0 KM 20

- Coverage gained after DTV transition
- No symbol = no change in coverage

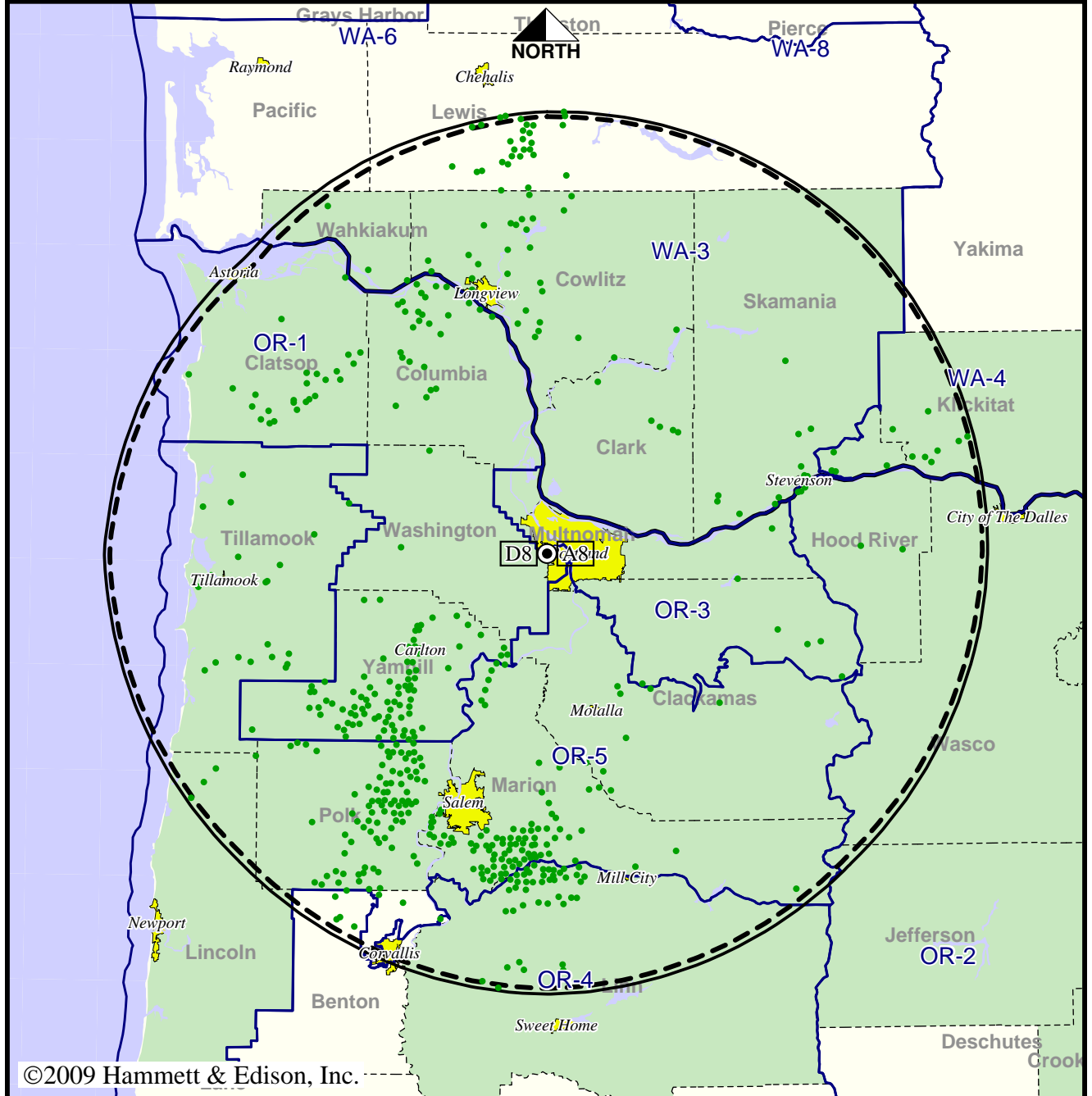
Analog service	2,250,366 persons
Digital service	2,333,632
Analog loss	0
Digital gain	83,266
Net gain	83,266

TV Station KGW • Analog Channel 8, DTV Channel 8 • Portland, OR

Approved Post-Transition Operation: Granted Construction Permit

Digital CP (solid): 25.0 kW ERP at 524 m HAAT, Network: NBC  
 vs. Analog (dashed): 316 kW ERP at 524 m HAAT, Network: NBC

Market: Portland, OR



©2009 Hammett & Edison, Inc.

10 MI 0 10 20 30 40 50 100 80 60 40 20 0 KM 20

- Coverage gained after DTV transition
- No symbol = no change in coverage

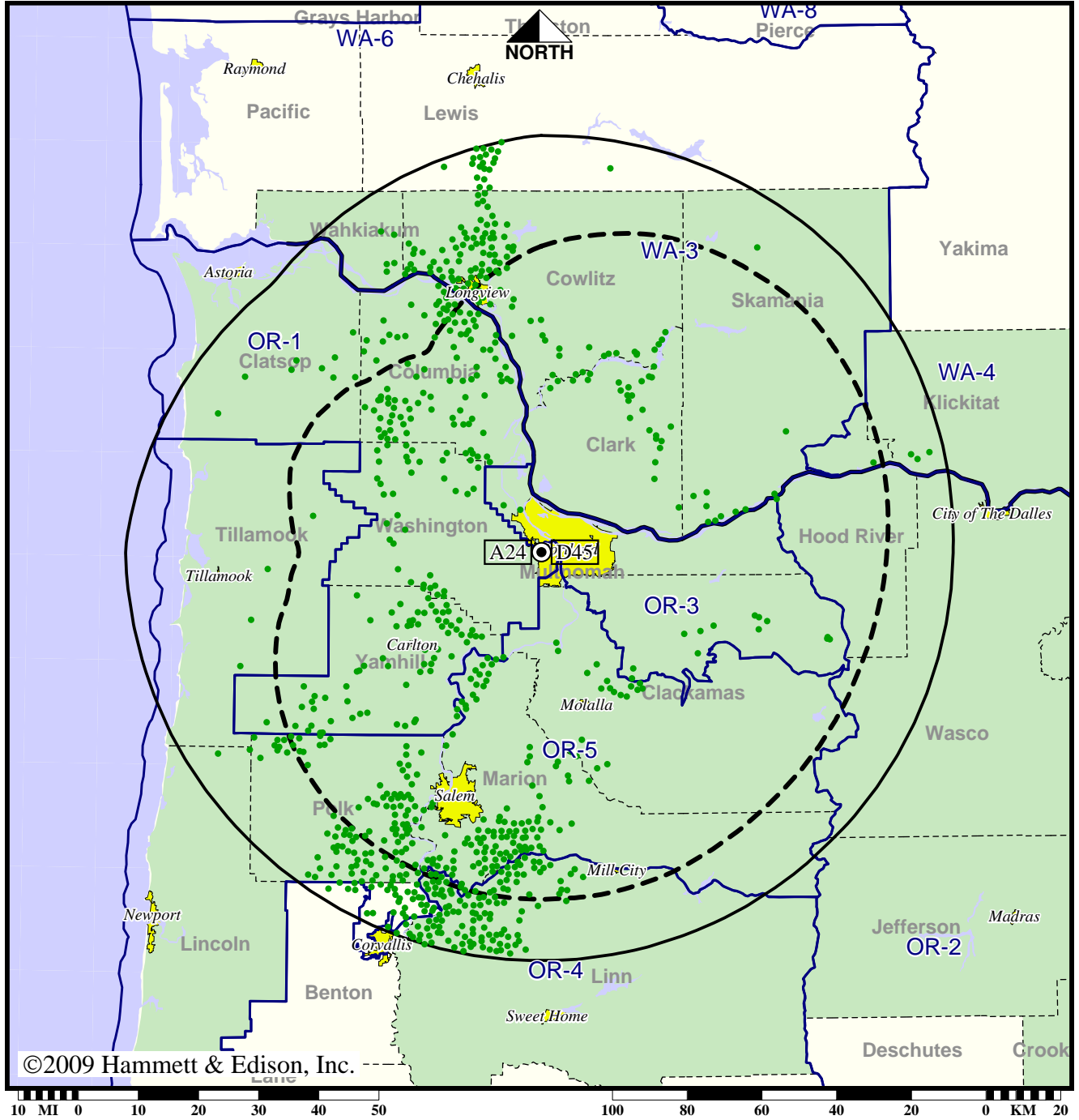
Analog service	2,250,366 persons
Digital service	2,333,632
Analog loss	0
Digital gain	83,266
Net gain	83,266

TV Station KNMT • Analog Channel 24, DTV Channel 45 • Portland, OR

Expected Operation on June 13: Licensed

Digital License (solid): 1000 kW ERP at 455 m HAAT  
 vs. Analog (dashed): 2690 kW ERP at 463 m HAAT

Market: Portland, OR



©2009 Hammett & Edison, Inc.

● Coverage gained after DTV transition  
 No symbol = no change in coverage

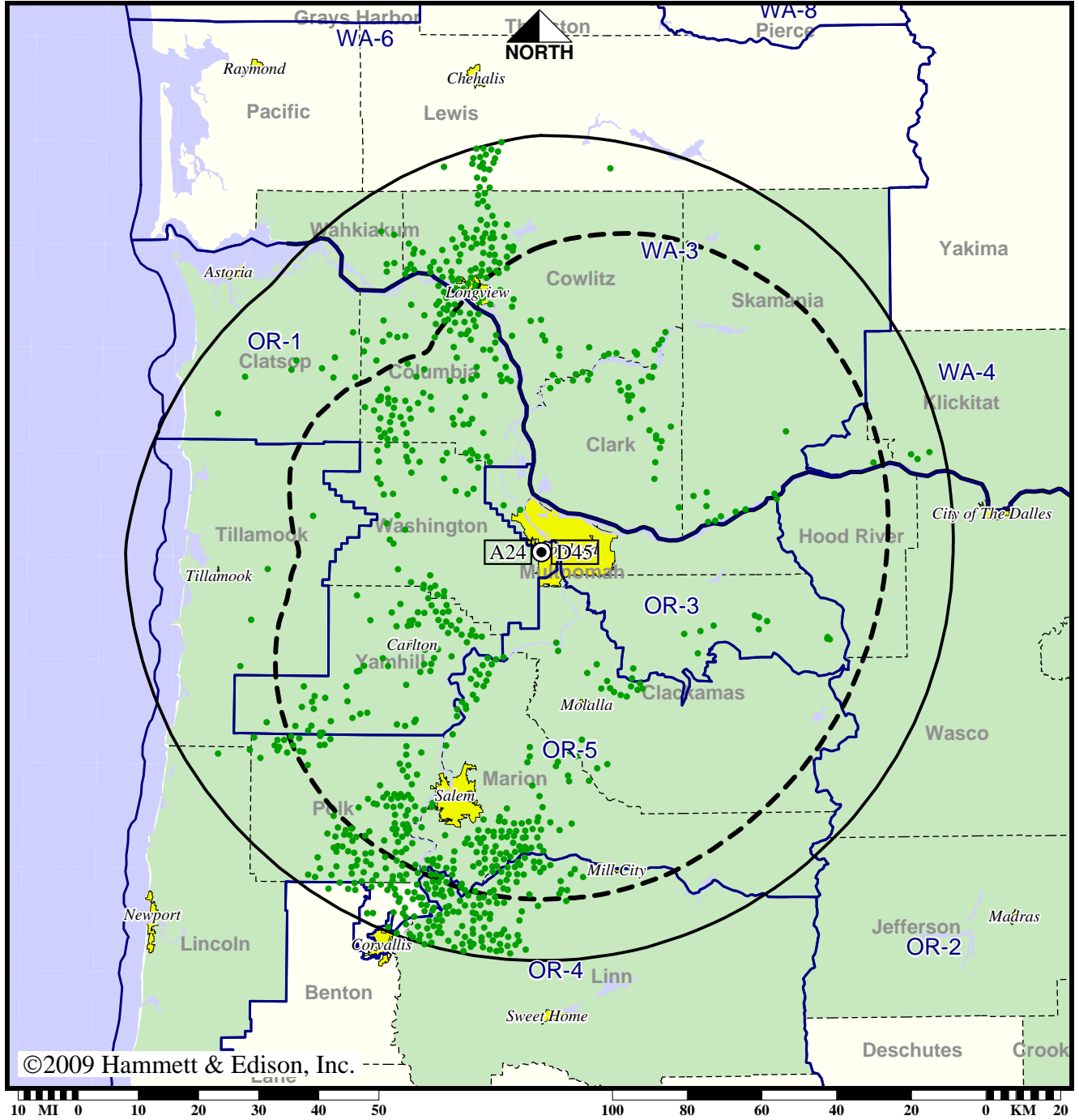
Analog service	2,181,054 persons
Digital service	2,386,820
Analog loss	0
Digital gain	205,766
Net gain	205,766

TV Station KNMT • Analog Channel 24, DTV Channel 45 • Portland, OR

Approved Post-Transition Operation: Licensed

Digital License (solid): 1000 kW ERP at 455 m HAAT  
 vs. Analog (dashed): 2690 kW ERP at 463 m HAAT

Market: Portland, OR



©2009 Hammett & Edison, Inc.

● Coverage gained after DTV transition  
 No symbol = no change in coverage

Analog service	2,181,054 persons
Digital service	2,386,820
Analog loss	0
Digital gain	205,766
Net gain	205,766

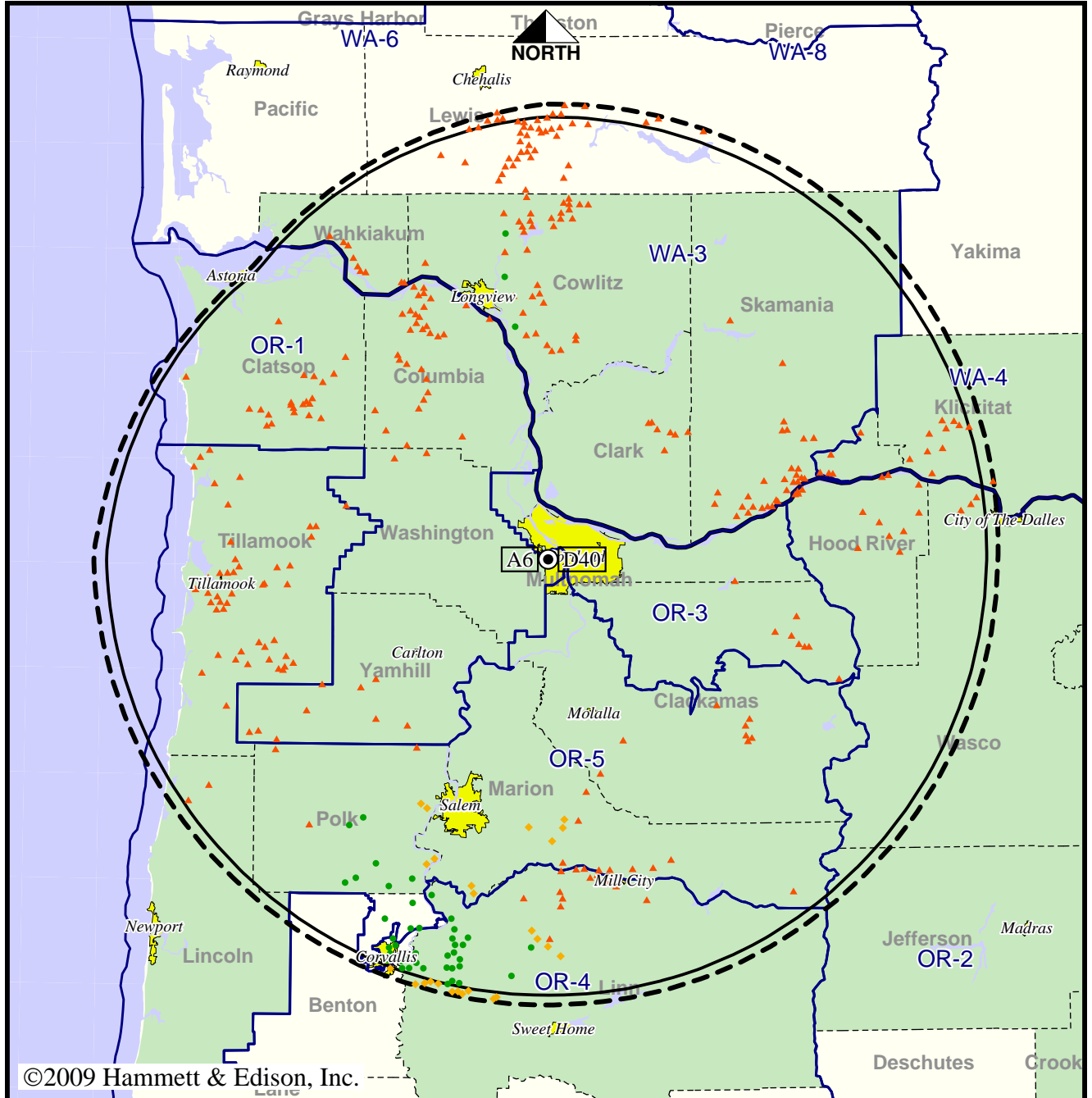


TV Station KOIN • Analog Channel 6, DTV Channel 40 • Portland, OR

Expected Operation on June 13: Licensed

Digital License (solid): 1000 kW ERP at 523 m HAAT, Network: CBS  
 vs. Analog (dashed): 100 kW ERP at 490 m HAAT, Network: CBS

Market: Portland, OR



©2009 Hammett & Edison, Inc.

- Coverage gained after DTV transition
- No symbol = no change in coverage
- ◆ Coverage lost but still served by same network
- ▲ Coverage lost and no other service by same network

Analog service	2,447,486 persons
Digital service	2,437,510
Analog loss	35,179
Digital gain	25,203
Net gain	-9,976



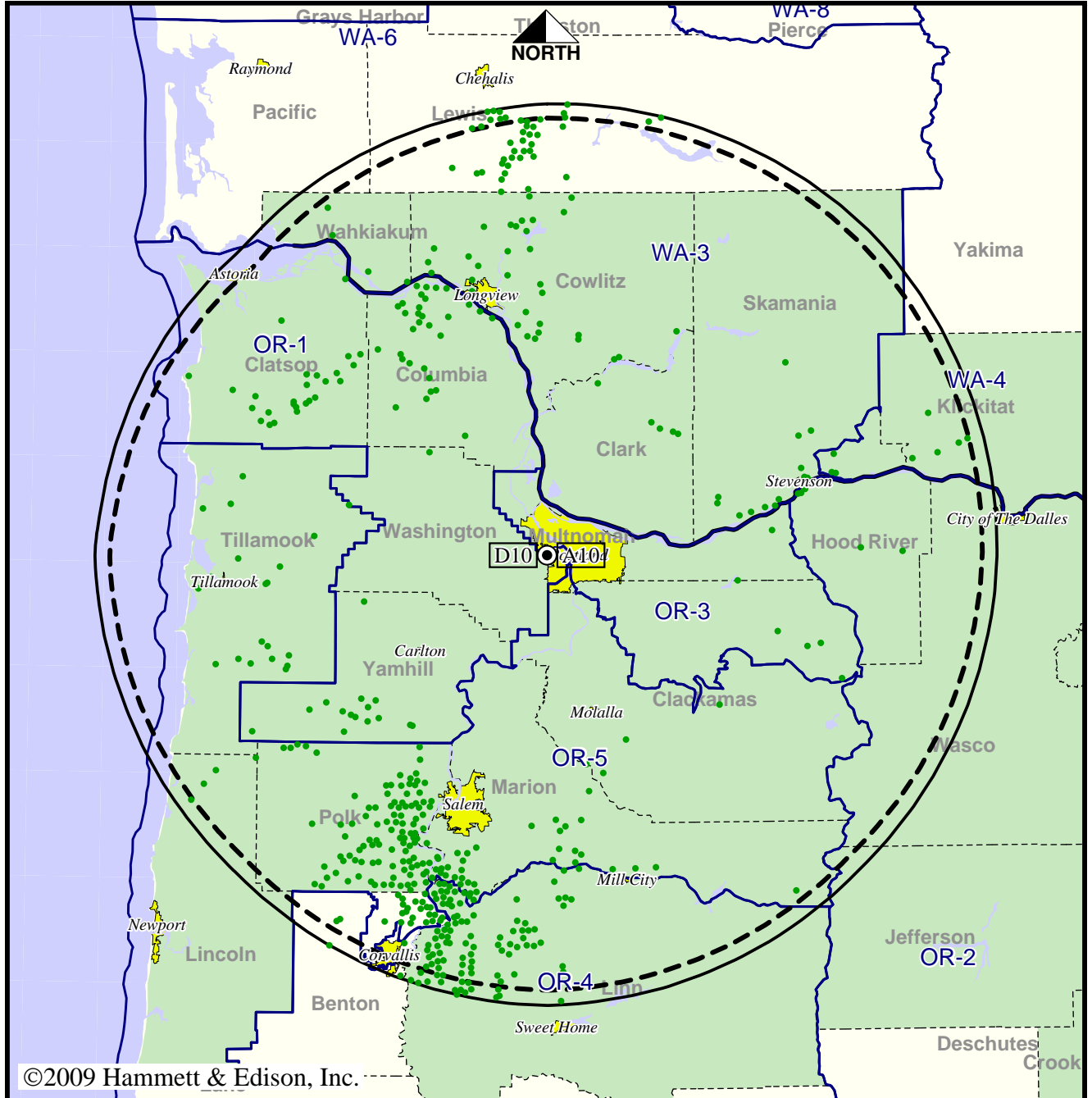


Station KOPB-TV • Analog Channel 10, DTV Channel 10 • Portland, OR

Expected Operation on June 13: Granted Construction Permit

Digital CP (solid): 32.4 kW ERP at 524 m HAAT, Network: PBS  
 vs. Analog (dashed): 316 kW ERP at 524 m HAAT, Network: PBS

Market: Portland, OR



©2009 Hammett & Edison, Inc.

● Coverage gained after DTV transition  
 No symbol = no change in coverage

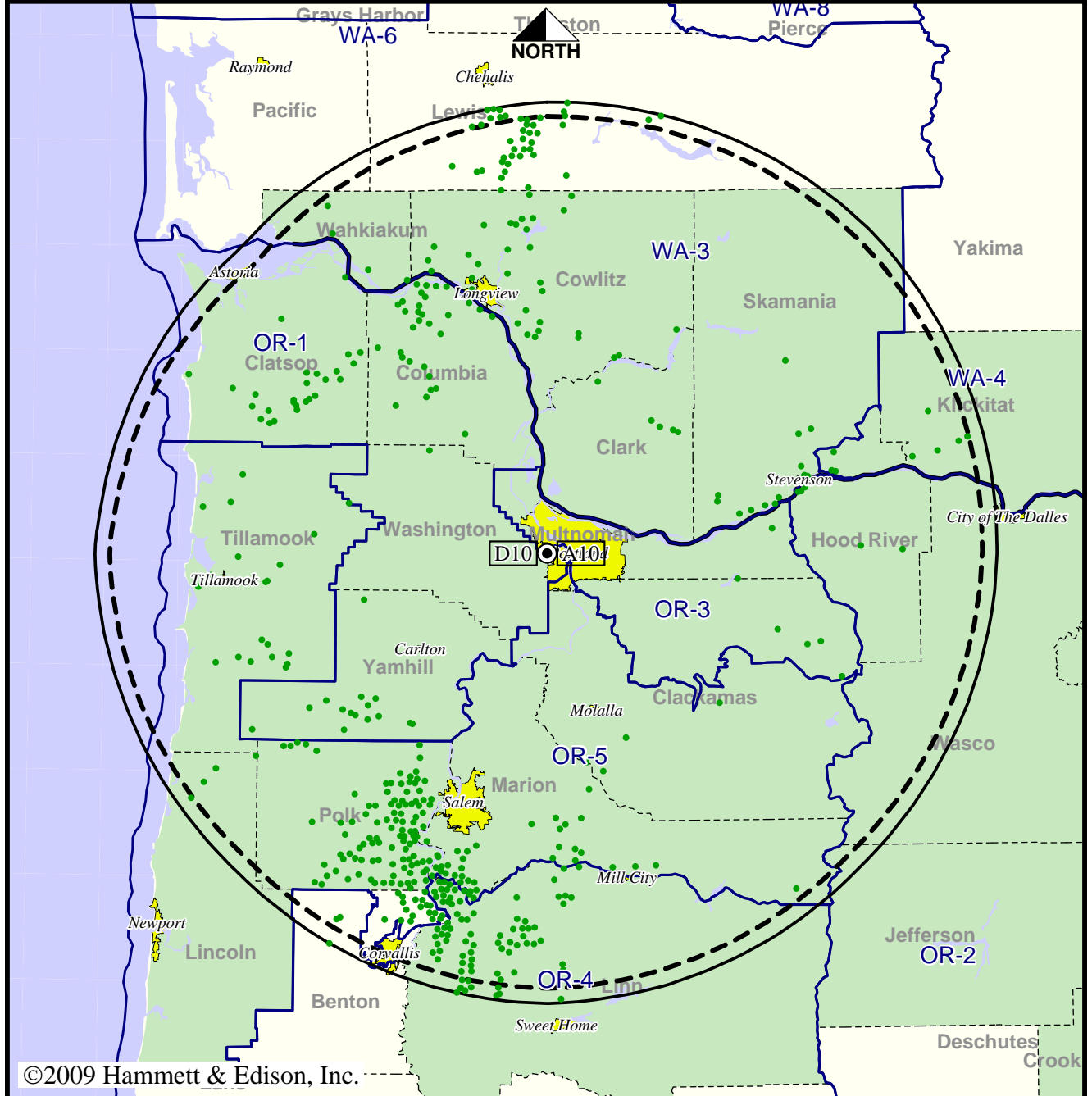
Analog service	2,327,501 persons
Digital service	2,435,112
Analog loss	0
Digital gain	107,611
Net gain	107,611

Station KOPB-TV • Analog Channel 10, DTV Channel 10 • Portland, OR

Approved Post-Transition Operation: Granted Construction Permit

Digital CP (solid): 32.4 kW ERP at 524 m HAAT, Network: PBS  
 vs. Analog (dashed): 316 kW ERP at 524 m HAAT, Network: PBS

Market: Portland, OR



©2009 Hammett & Edison, Inc.

● Coverage gained after DTV transition  
 No symbol = no change in coverage

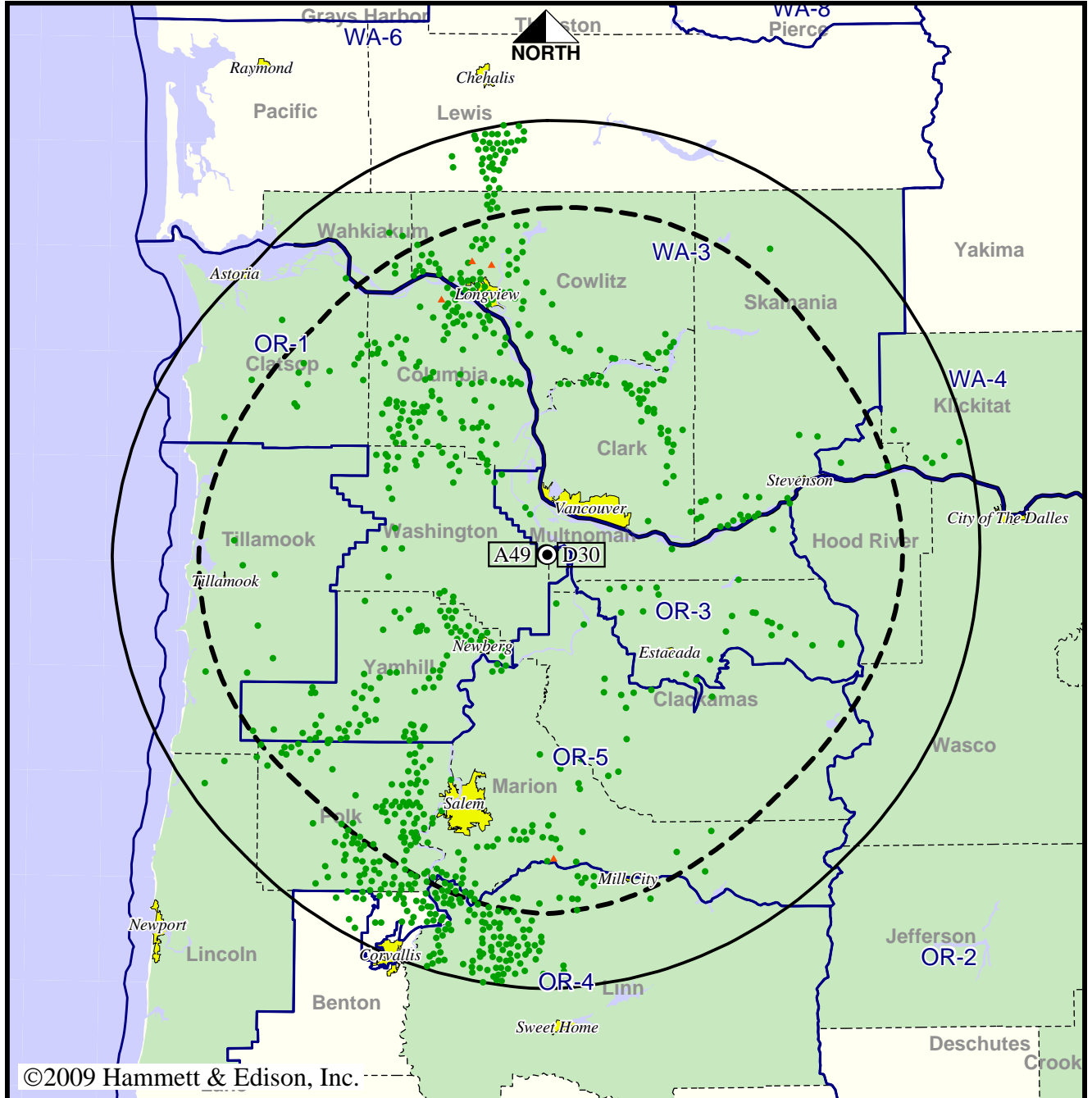
Analog service	2,327,501 persons
Digital service	2,430,015
Analog loss	0
Digital gain	102,514
Net gain	102,514

TV Station KPDX • Analog Channel 49, DTV Channel 30 • Vancouver, WA

Expected Operation on June 13: Appendix B Facility

Digital Appendix B (solid): 741 kW ERP at 528 m HAAT  
 vs. Analog (dashed): 2950 kW ERP at 527 m HAAT

Market: Portland, OR



©2009 Hammett & Edison, Inc.

- Coverage gained after DTV transition
- No symbol = no change in coverage
- ▲ Coverage lost after DTV transition

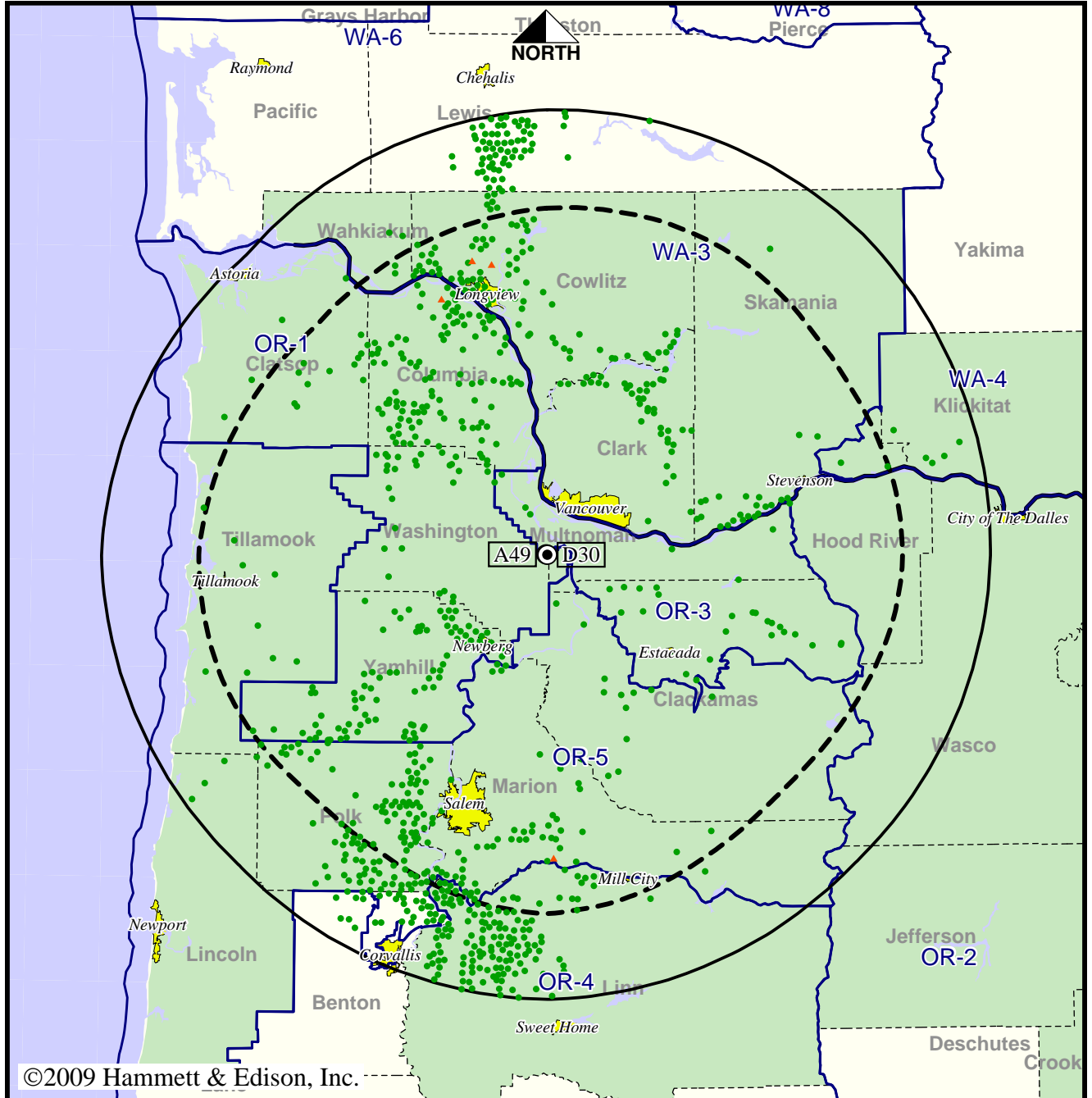
Analog service	2,178,665 persons
Digital service	2,402,634
Analog loss	565
Digital gain	224,534
Net gain	223,969

TV Station KPDX • Analog Channel 49, DTV Channel 30 • Vancouver, WA

Approved Post-Transition Operation: Granted Construction Permit

Digital CP (solid): 1000 kW ERP at 513 m HAAT  
 vs. Analog (dashed): 2950 kW ERP at 527 m HAAT

Market: Portland, OR



©2009 Hammett & Edison, Inc.

- Coverage gained after DTV transition
- No symbol = no change in coverage
- ▲ Coverage lost after DTV transition

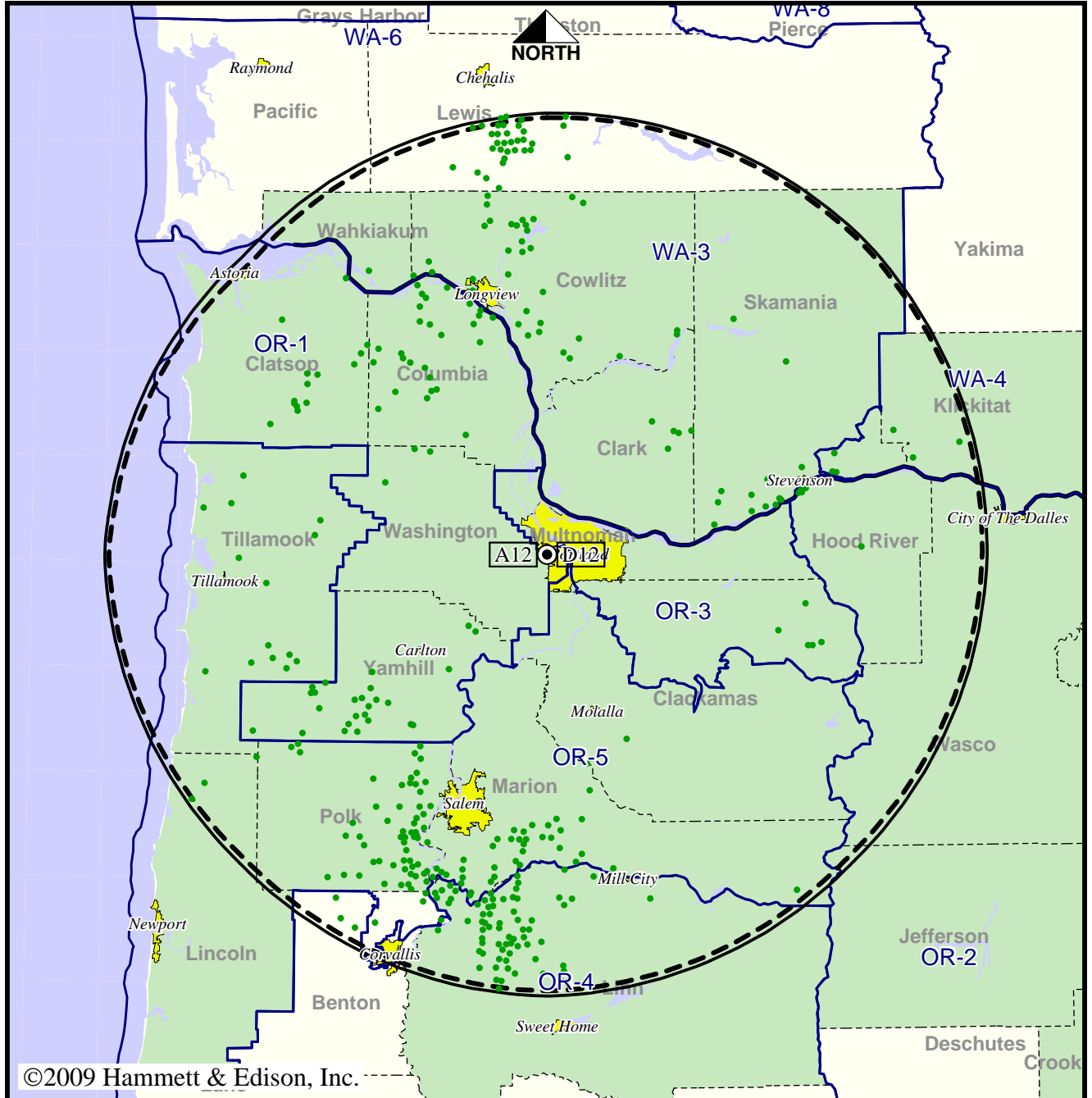
Analog service	2,178,665 persons
Digital service	2,419,340
Analog loss	565
Digital gain	241,240
Net gain	240,675

TV Station KPTV • Analog Channel 12, DTV Channel 12 • Portland, OR

Expected Operation on June 13: Granted Construction Permit

Digital CP (solid): 24.5 kW ERP at 529 m HAAT, Network: Fox  
 vs. Analog (dashed): 316 kW ERP at 544 m HAAT, Network: Fox

Market: Portland, OR



©2009 Hammett & Edison, Inc.

● Coverage gained after DTV transition  
 No symbol = no change in coverage

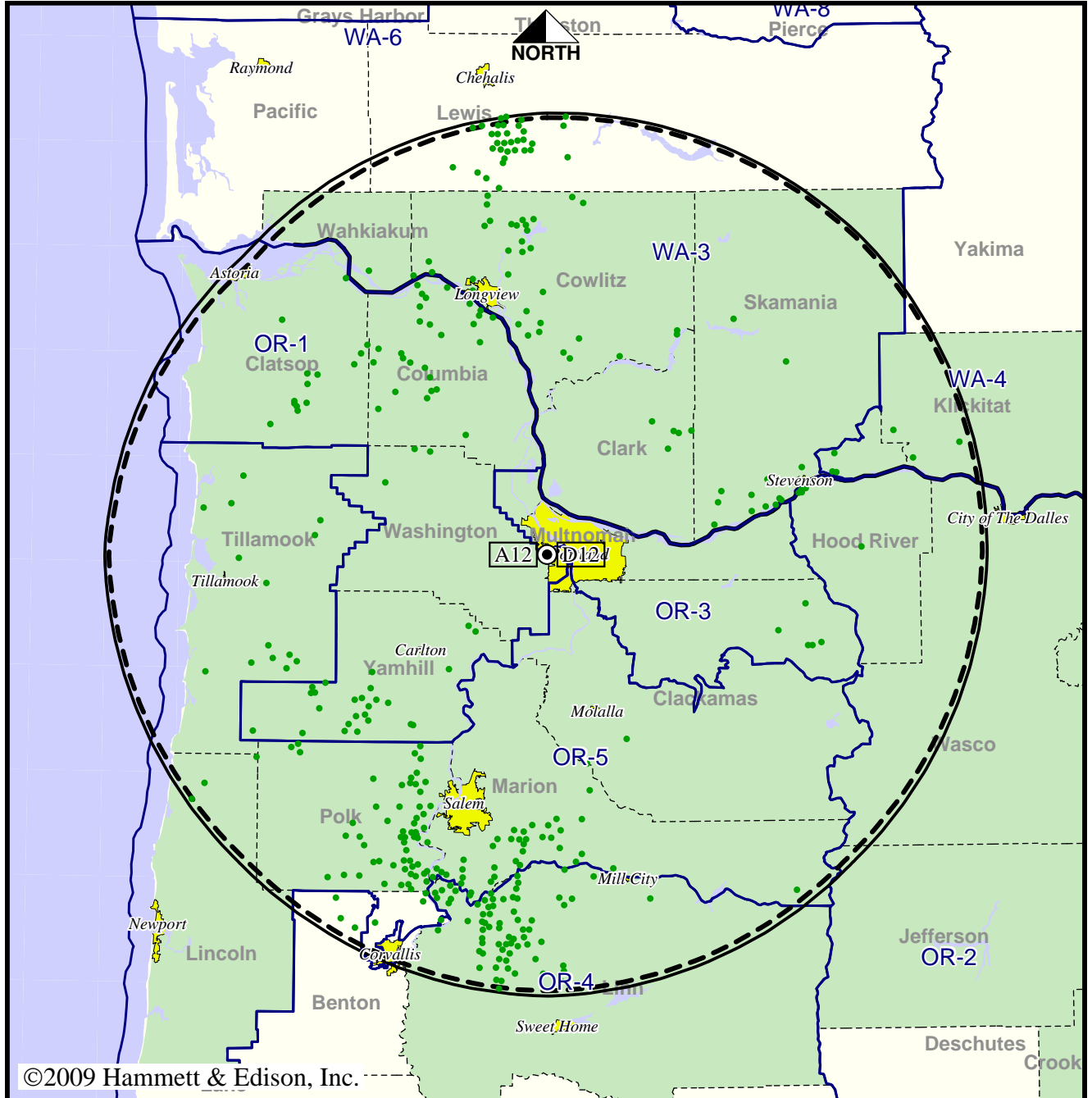
Analog service	2,316,601 persons
Digital service	2,383,993
Analog loss	0
Digital gain	67,392
Net gain	67,392

TV Station KPTV • Analog Channel 12, DTV Channel 12 • Portland, OR

Approved Post-Transition Operation: Granted Construction Permit

Digital CP (solid): 24.5 kW ERP at 529 m HAAT, Network: Fox  
 vs. Analog (dashed): 316 kW ERP at 544 m HAAT, Network: Fox

Market: Portland, OR



©2009 Hammett & Edison, Inc.

10 MI 0 10 20 30 40 50 100 80 60 40 20 0 KM 20

● Coverage gained after DTV transition  
 No symbol = no change in coverage

Analog service	2,316,601 persons
Digital service	2,383,993
Analog loss	0
Digital gain	67,392
Net gain	67,392

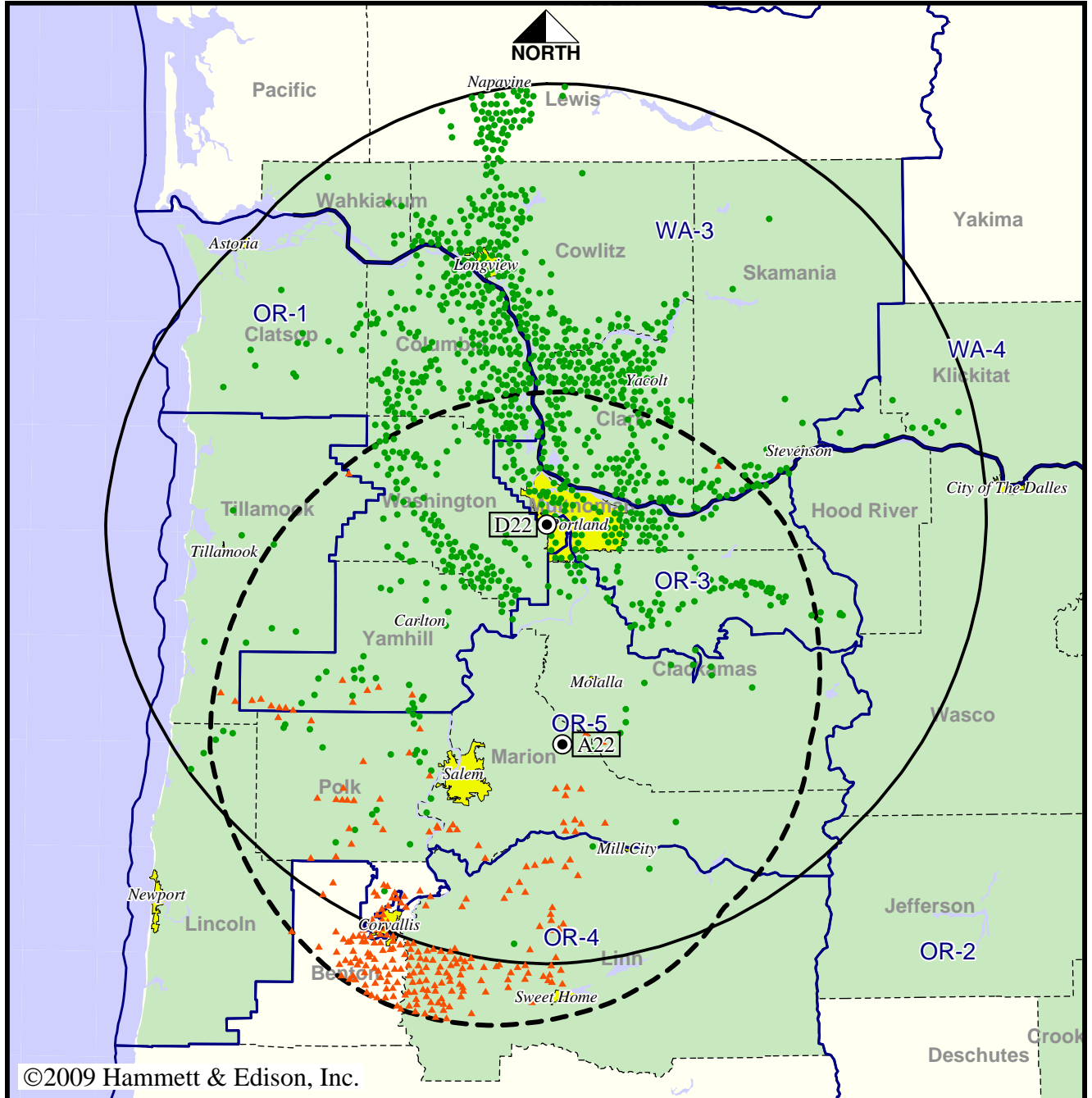


TV Station KPXG • Analog Channel 22, DTV Channel 22 • Salem, OR

Expected Operation on June 13: Granted Construction Permit

Digital CP (solid): 745 kW ERP at 510 m HAAT  
 vs. Analog (dashed): 1700 kW ERP at 363 m HAAT

Market: Portland, OR



©2009 Hammett & Edison, Inc.

- Coverage gained after DTV transition
- No symbol = no change in coverage
- ▲ Coverage lost after DTV transition

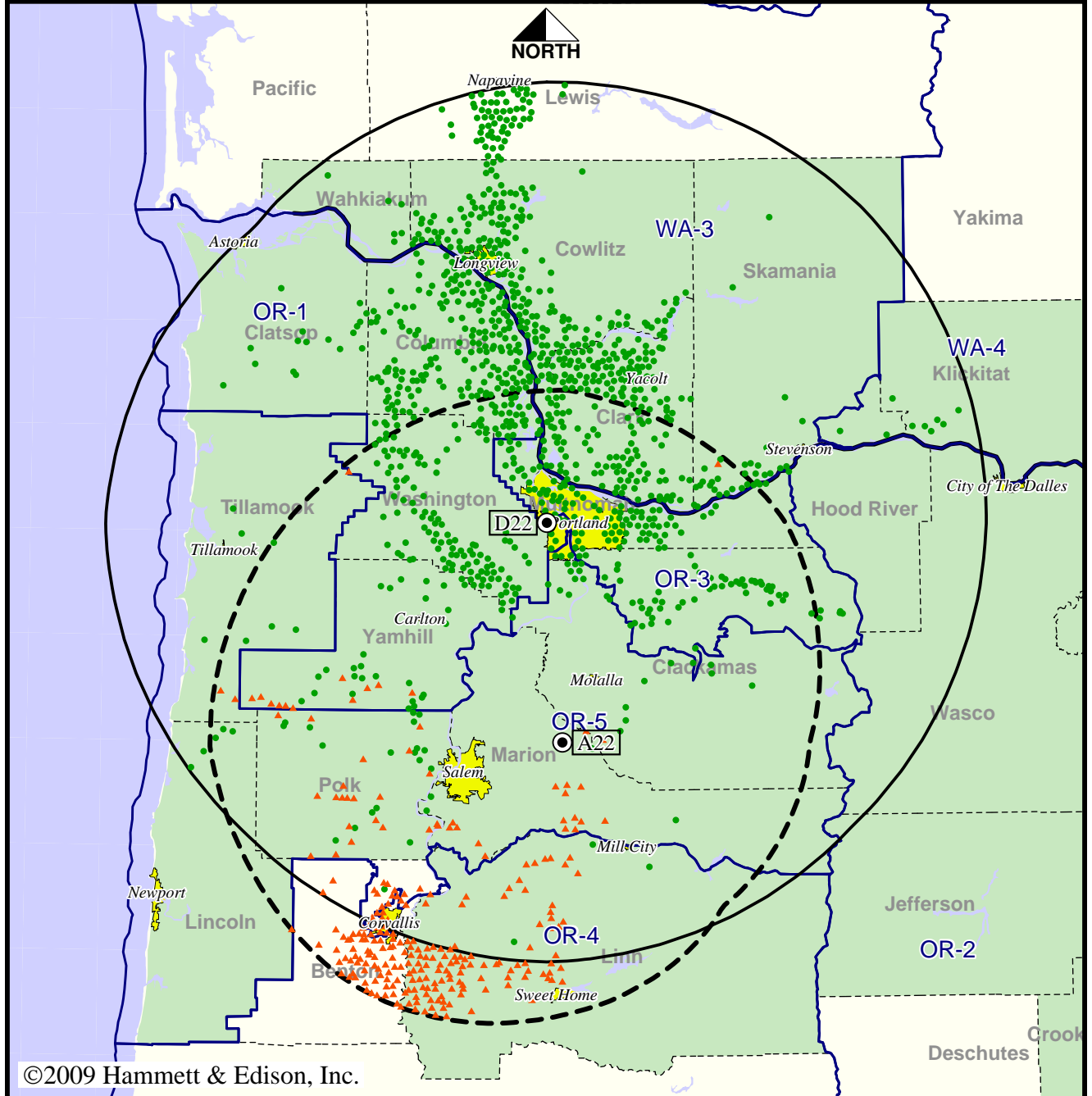
Analog service	1,684,441 persons
Digital service	2,448,252
Analog loss	54,720
Digital gain	818,531
Net gain	763,811

TV Station KPXG • Analog Channel 22, DTV Channel 22 • Salem, OR

Approved Post-Transition Operation: Granted Construction Permit

Digital CP (solid): 745 kW ERP at 510 m HAAT  
 vs. Analog (dashed): 1700 kW ERP at 363 m HAAT

Market: Portland, OR



©2009 Hammett & Edison, Inc.

- Coverage gained after DTV transition
- No symbol = no change in coverage
- ▲ Coverage lost after DTV transition

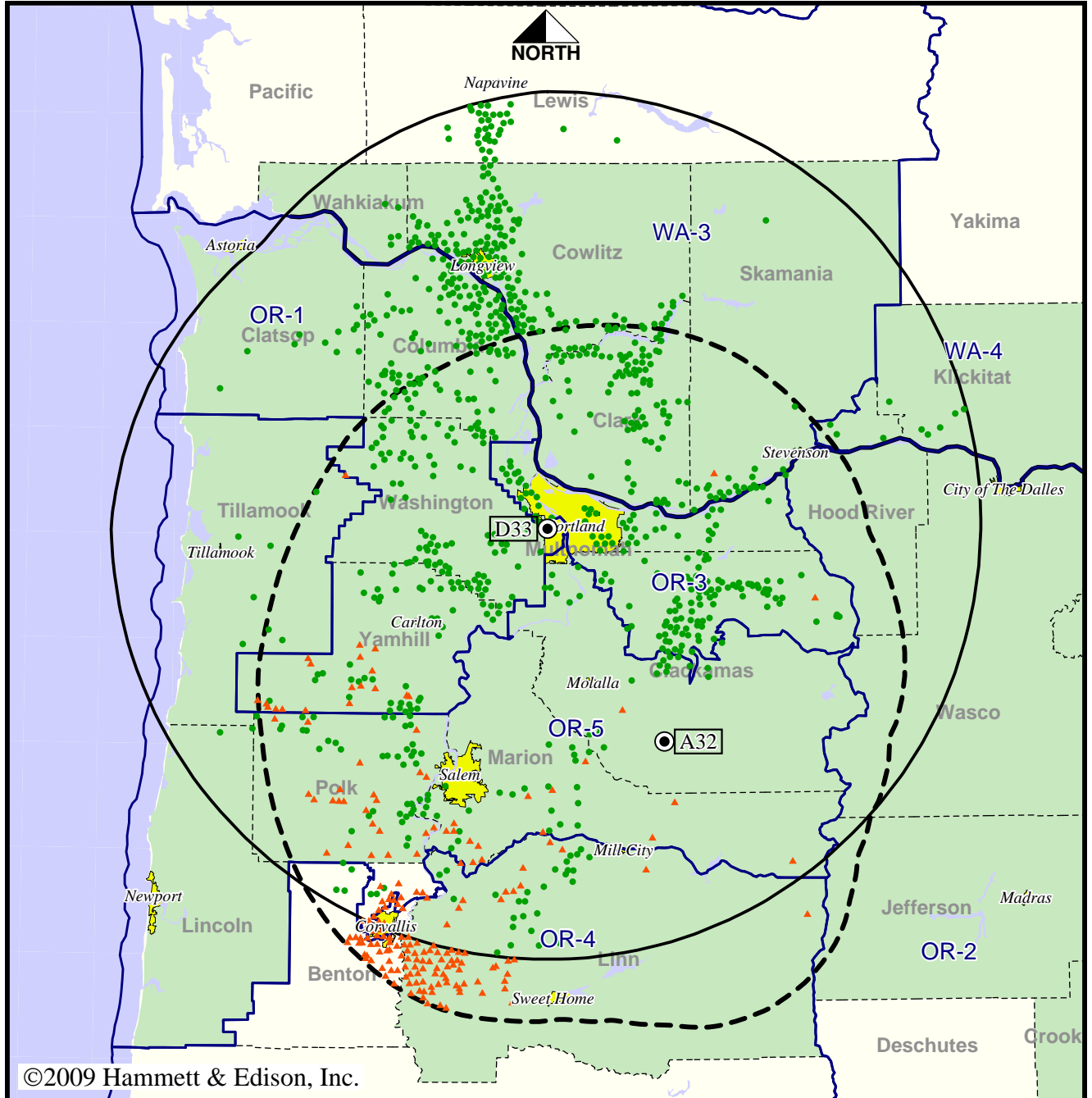
Analog service	1,684,441 persons
Digital service	2,448,252
Analog loss	54,720
Digital gain	818,531
Net gain	763,811

Station KRCW-TV • Analog Channel 32, DTV Channel 33 • Salem, OR

Expected Operation on June 13: Licensed

Digital License (solid): 750 kW ERP at 523 m HAAT  
 vs. Analog (dashed): 5000 kW ERP at 544 m HAAT

Market: Portland, OR



- Coverage gained after DTV transition
- No symbol = no change in coverage
- ▲ Coverage lost after DTV transition

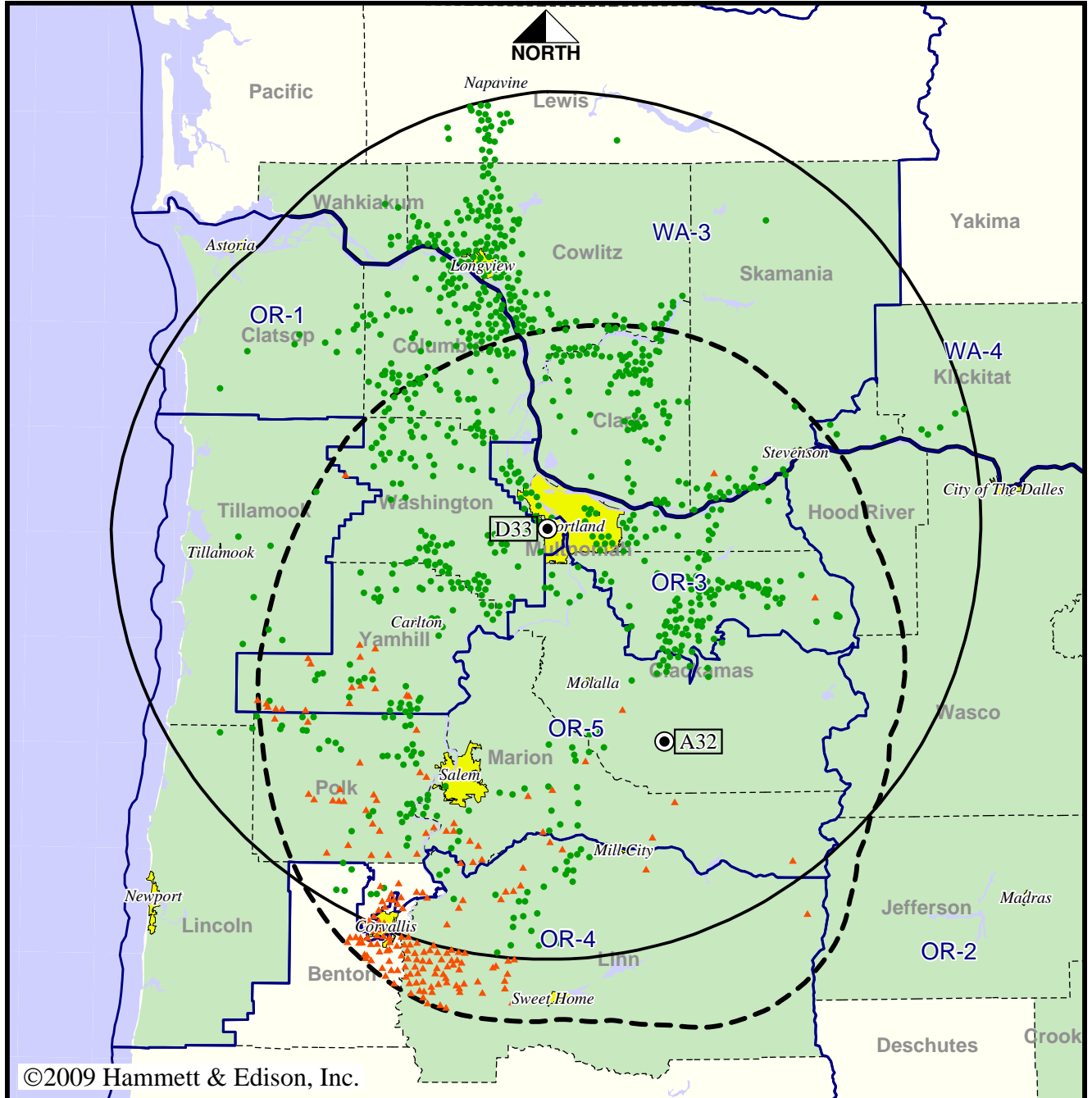
Analog service	2,081,324 persons
Digital service	2,435,739
Analog loss	45,909
Digital gain	400,324
Net gain	354,415

Station KRCW-TV • Analog Channel 32, DTV Channel 33 • Salem, OR

Approved Post-Transition Operation: Licensed

Digital License (solid): 750 kW ERP at 523 m HAAT  
 vs. Analog (dashed): 5000 kW ERP at 544 m HAAT

Market: Portland, OR



©2009 Hammett & Edison, Inc.

- Coverage gained after DTV transition
- No symbol = no change in coverage
- ▲ Coverage lost after DTV transition

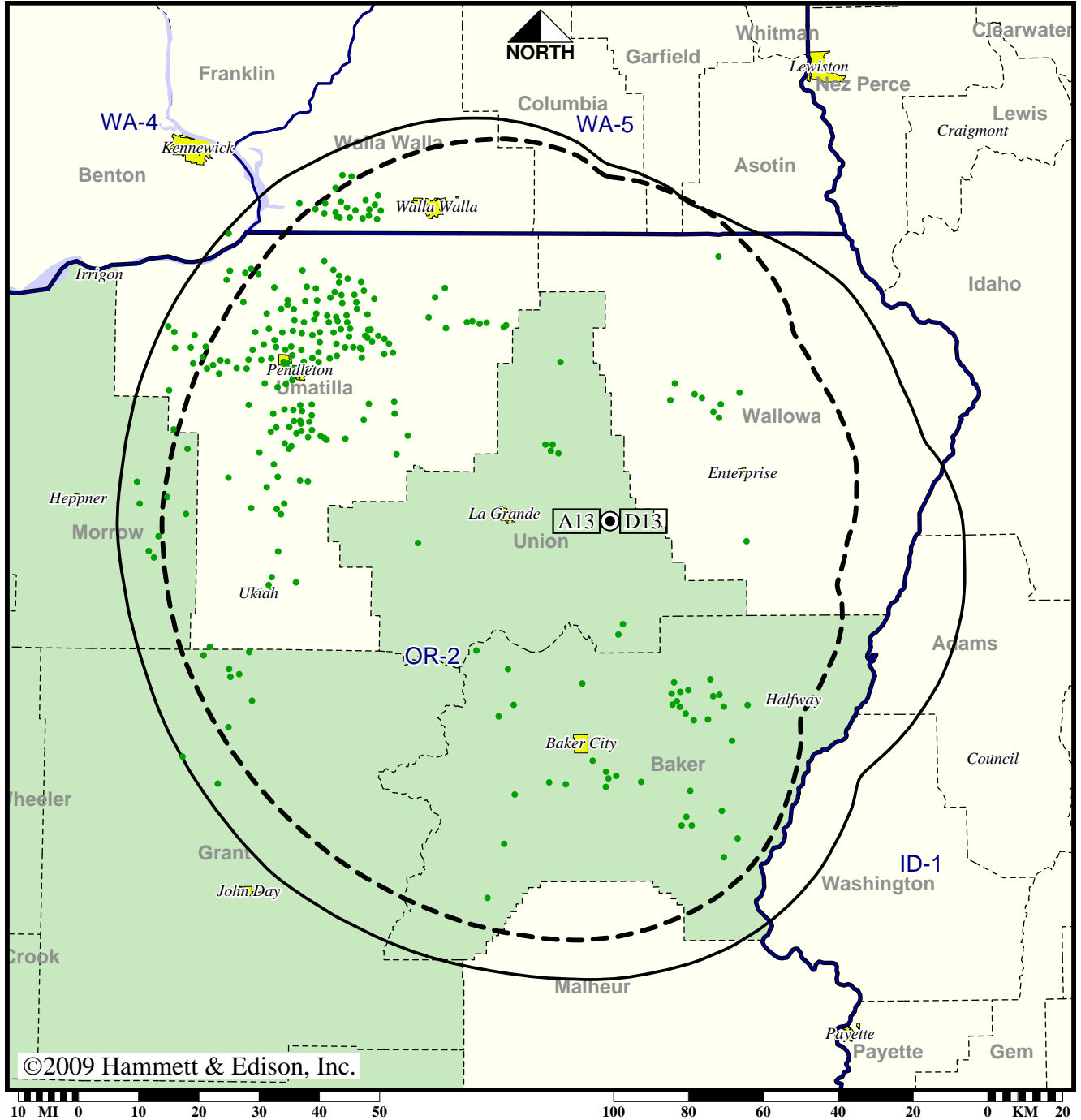
Analog service	2,081,324 persons
Digital service	2,434,487
Analog loss	45,909
Digital gain	399,072
Net gain	353,163

TV Station KTVR • Analog Channel 13, DTV Channel 13 • La Grande, OR

Expected Operation on June 13: Granted Construction Permit

Digital CP (solid): 16.1 kW ERP at 775 m HAAT, Network: PBS  
 vs. Analog (dashed): 65.0 kW ERP at 775 m HAAT, Network: PBS

Market: Portland, OR



©2009 Hammett & Edison, Inc.

● Coverage gained after DTV transition  
 No symbol = no change in coverage

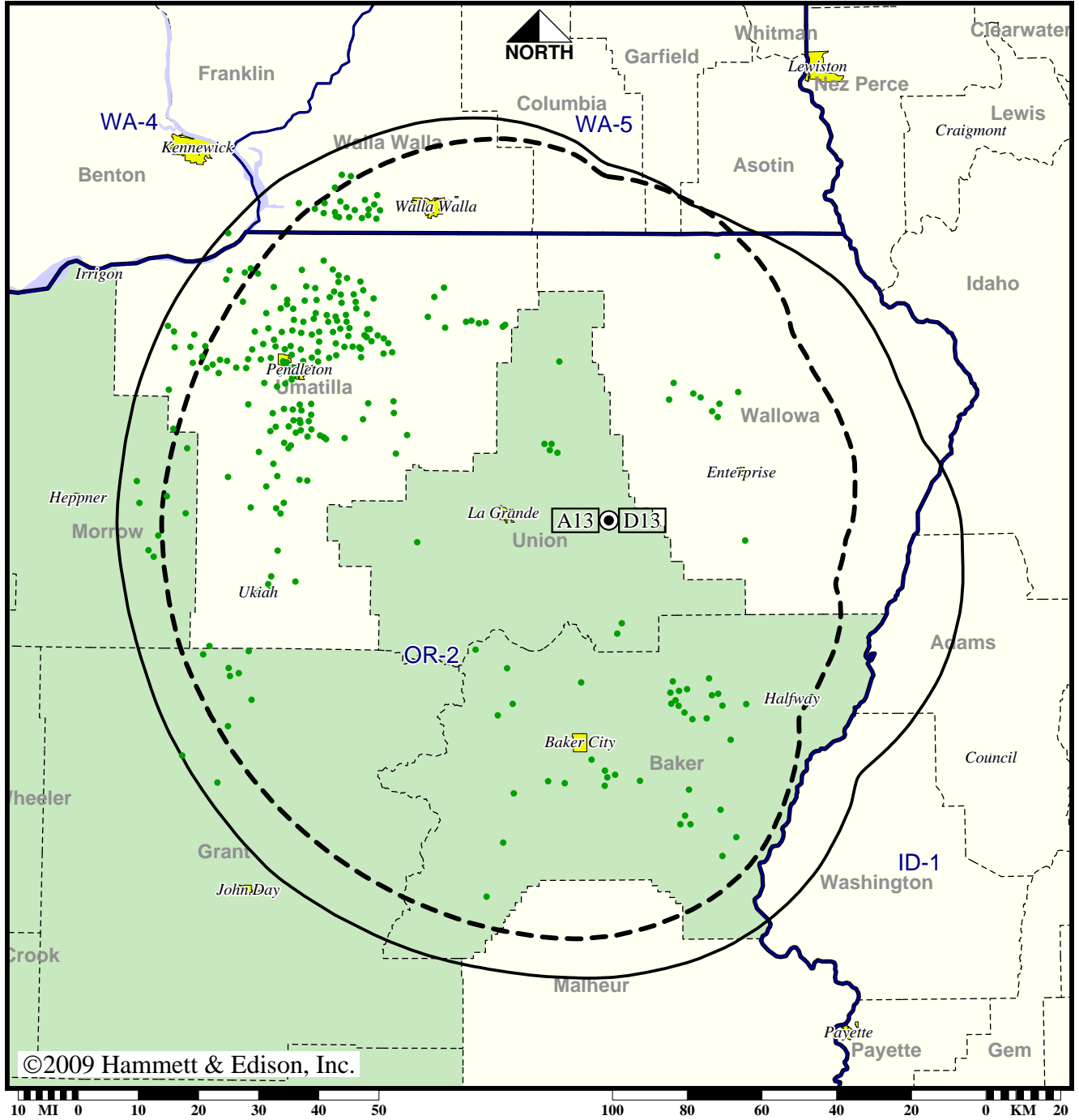
Analog service	37,679 persons
Digital service	53,657
Analog loss	0
Digital gain	15,978
Net gain	15,978

TV Station KTVR • Analog Channel 13, DTV Channel 13 • La Grande, OR

Approved Post-Transition Operation: Granted Construction Permit

Digital CP (solid): 16.1 kW ERP at 775 m HAAT, Network: PBS  
 vs. Analog (dashed): 65.0 kW ERP at 775 m HAAT, Network: PBS

Market: Portland, OR



©2009 Hammett & Edison, Inc.

● Coverage gained after DTV transition  
 No symbol = no change in coverage

Analog service	37,679 persons
Digital service	53,657
Analog loss	0
Digital gain	15,978
Net gain	15,978

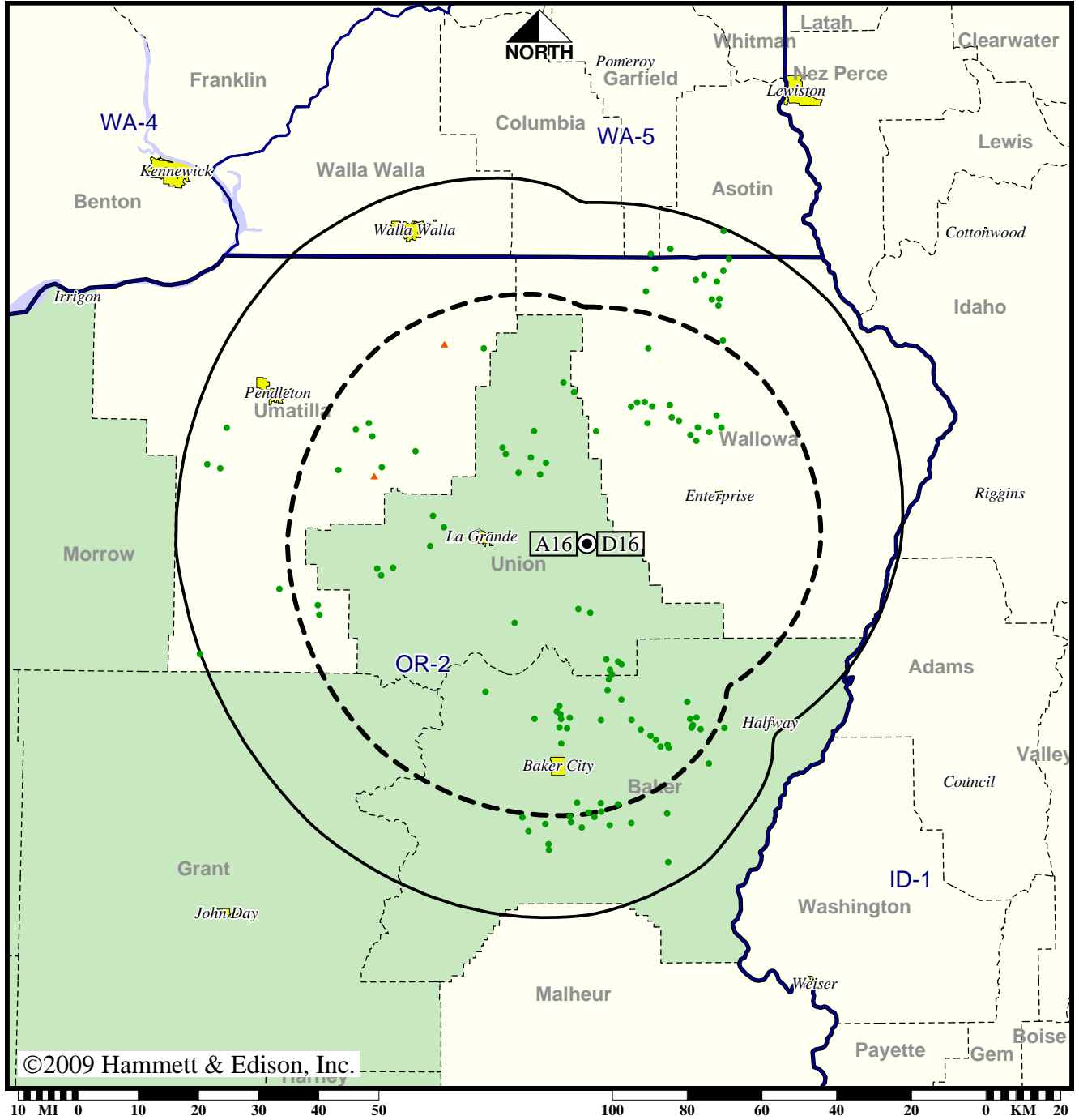


TV Station KUNP • Analog Channel 16, DTV Channel 16 • La Grande, OR

Expected Operation on June 13: Granted Construction Permit

Digital CP (solid): 50.0 kW ERP at 773 m HAAT  
 vs. Analog (dashed): 60.3 kW ERP at 773 m HAAT

Market: Portland, OR



©2009 Hammett & Edison, Inc.

- Coverage gained after DTV transition
- No symbol = no change in coverage
- ▲ Coverage lost after DTV transition

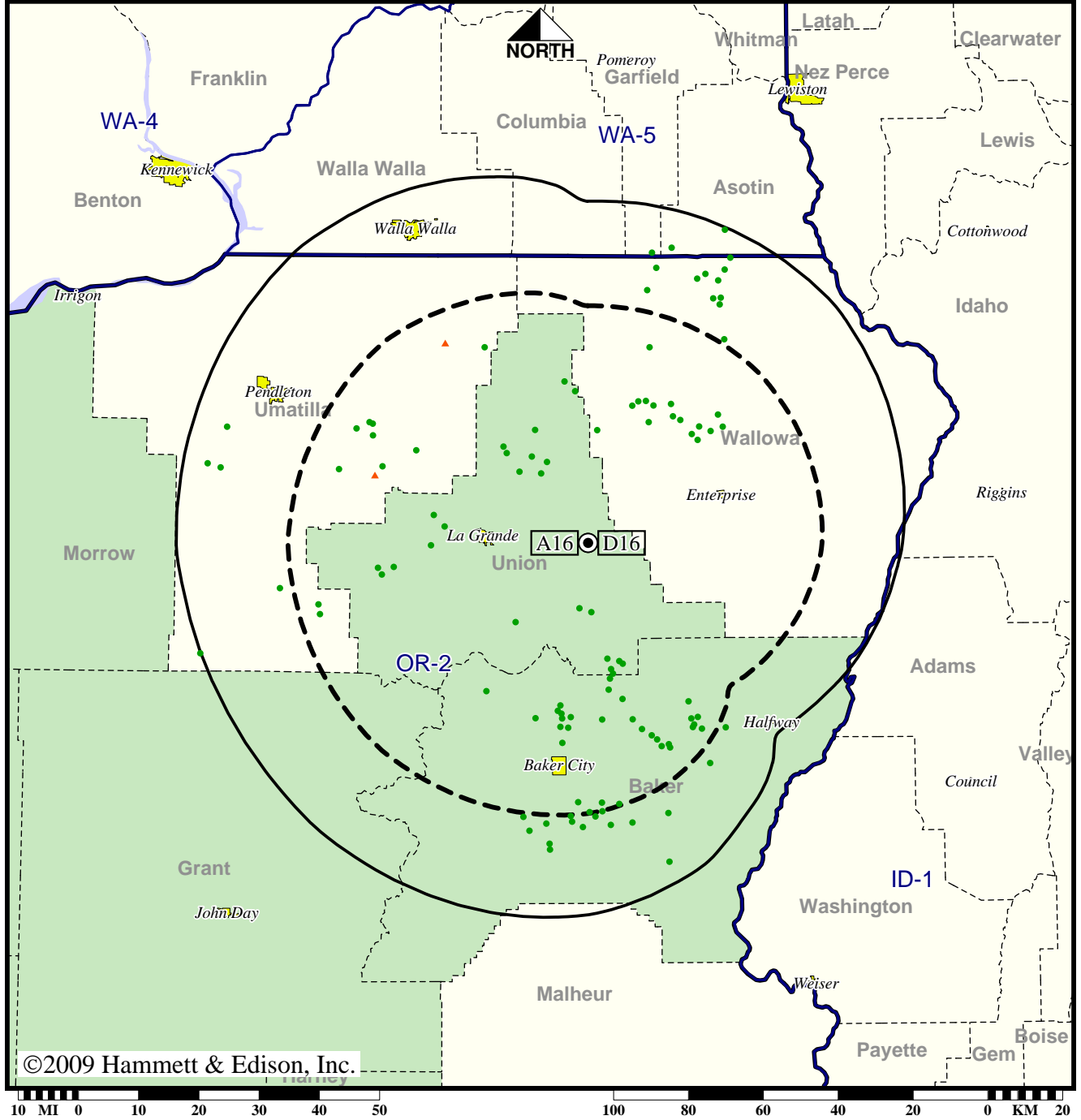
Analog service	37,010 persons
Digital service	37,770
Analog loss	39
Digital gain	799
Net gain	760

TV Station KUNP • Analog Channel 16, DTV Channel 16 • La Grande, OR

Approved Post-Transition Operation: Granted Construction Permit

Digital CP (solid): 50.0 kW ERP at 773 m HAAT  
 vs. Analog (dashed): 60.3 kW ERP at 773 m HAAT

Market: Portland, OR



©2009 Hammett & Edison, Inc.

- Coverage gained after DTV transition
- No symbol = no change in coverage
- ▲ Coverage lost after DTV transition

Analog service	37,010 persons
Digital service	37,772
Analog loss	39
Digital gain	801
Net gain	762