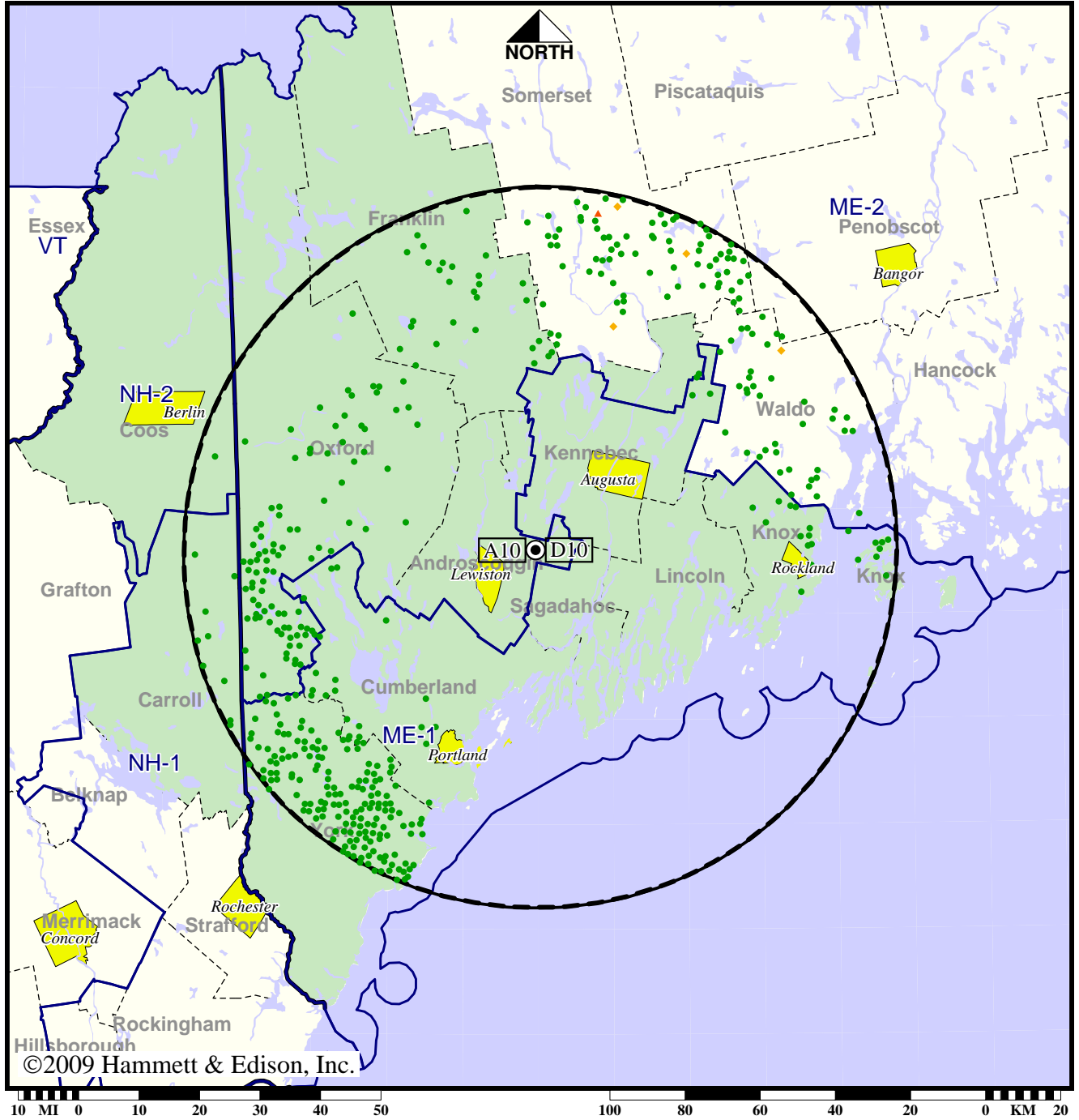


TV Station WCBB • Analog Channel 10, DTV Channel 10 • Augusta, ME

Expected Operation on June 13: Appendix B Facility

Digital Appendix B (solid): 15.3 kW ERP at 305 m HAAT, Network: PBS
 vs. Analog (dashed): 316 kW ERP at 304 m HAAT, Network: PBS

Market: Portland-Auburn, ME



- Coverage gained after DTV transition
- No symbol = no change in coverage
- ◆ Coverage lost but still served by same network
- ▲ Coverage lost and no other service by same network

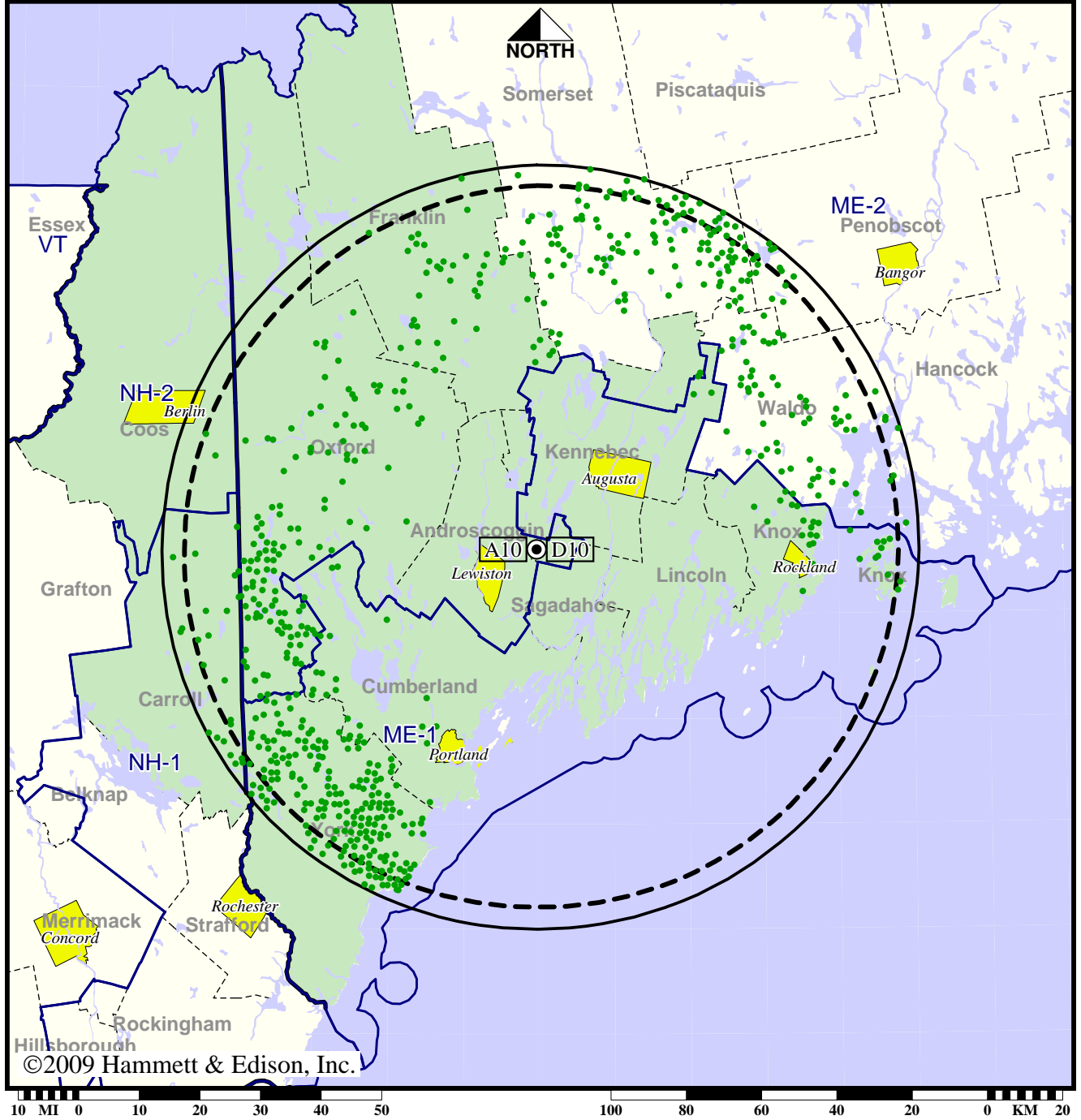
Analog service	725,647 persons
Digital service	800,568
Analog loss	273
Digital gain	75,194
Net gain	74,921

TV Station WCBB • Analog Channel 10, DTV Channel 10 • Augusta, ME

Approved Post-Transition Operation: Granted Construction Permit

Digital CP (solid): 30.0 kW ERP at 304 m HAAT, Network: PBS
 vs. Analog (dashed): 316 kW ERP at 304 m HAAT, Network: PBS

Market: Portland-Auburn, ME



● Coverage gained after DTV transition
 No symbol = no change in coverage

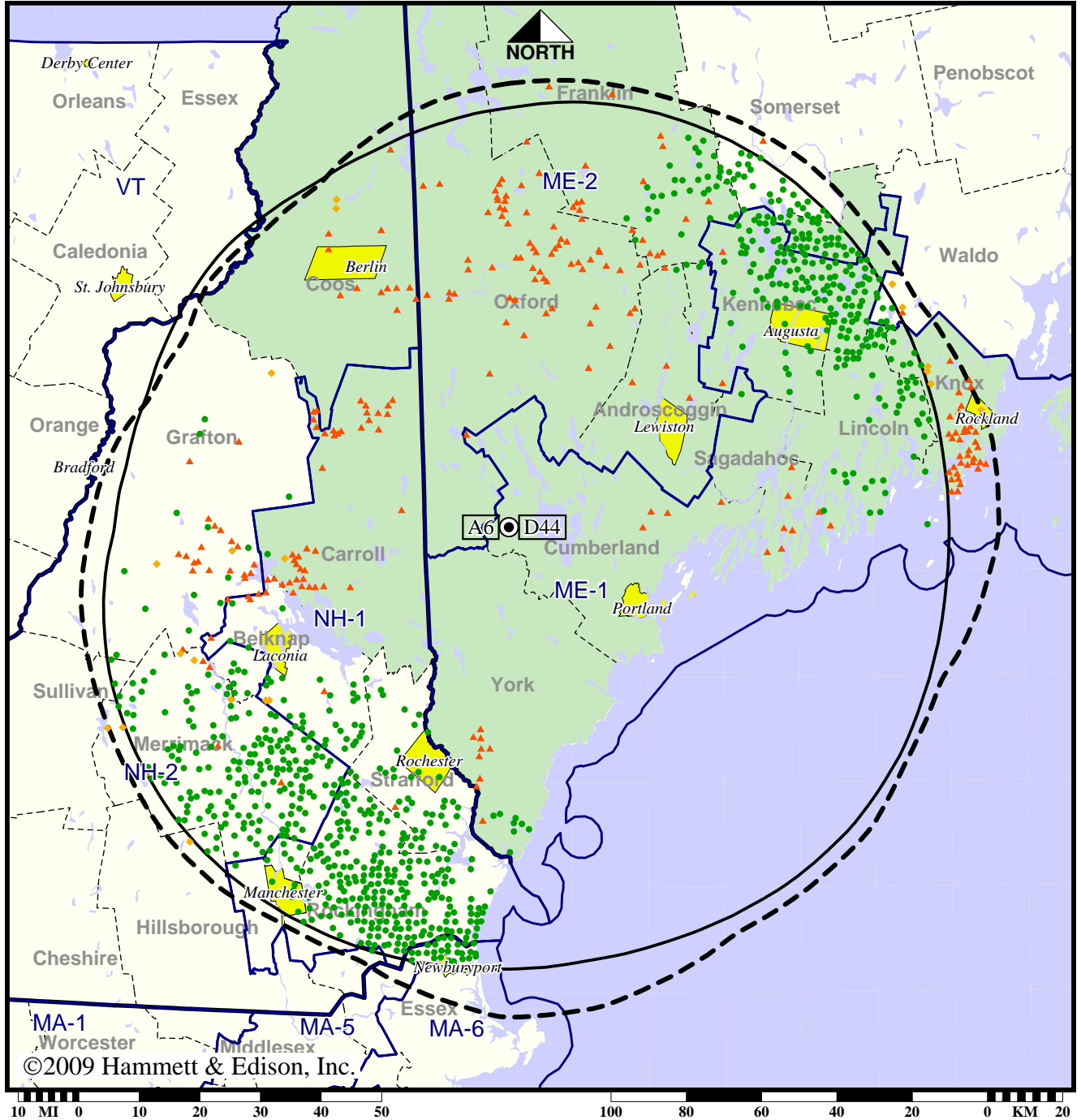
Analog service	725,647 persons
Digital service	824,222
Analog loss	0
Digital gain	98,575
Net gain	98,575

TV Station WCSH • Analog Channel 6, DTV Channel 44 • Portland, ME

Expected Operation on June 13: Licensed

Digital License (solid): 1000 kW ERP at 588 m HAAT, Network: NBC
 vs. Analog (dashed): 100 kW ERP at 610 m HAAT, Network: NBC

Market: Portland-Auburn, ME



- Coverage gained after DTV transition
- No symbol = no change in coverage
- ◆ Coverage lost but still served by same network
- ▲ Coverage lost and no other service by same network

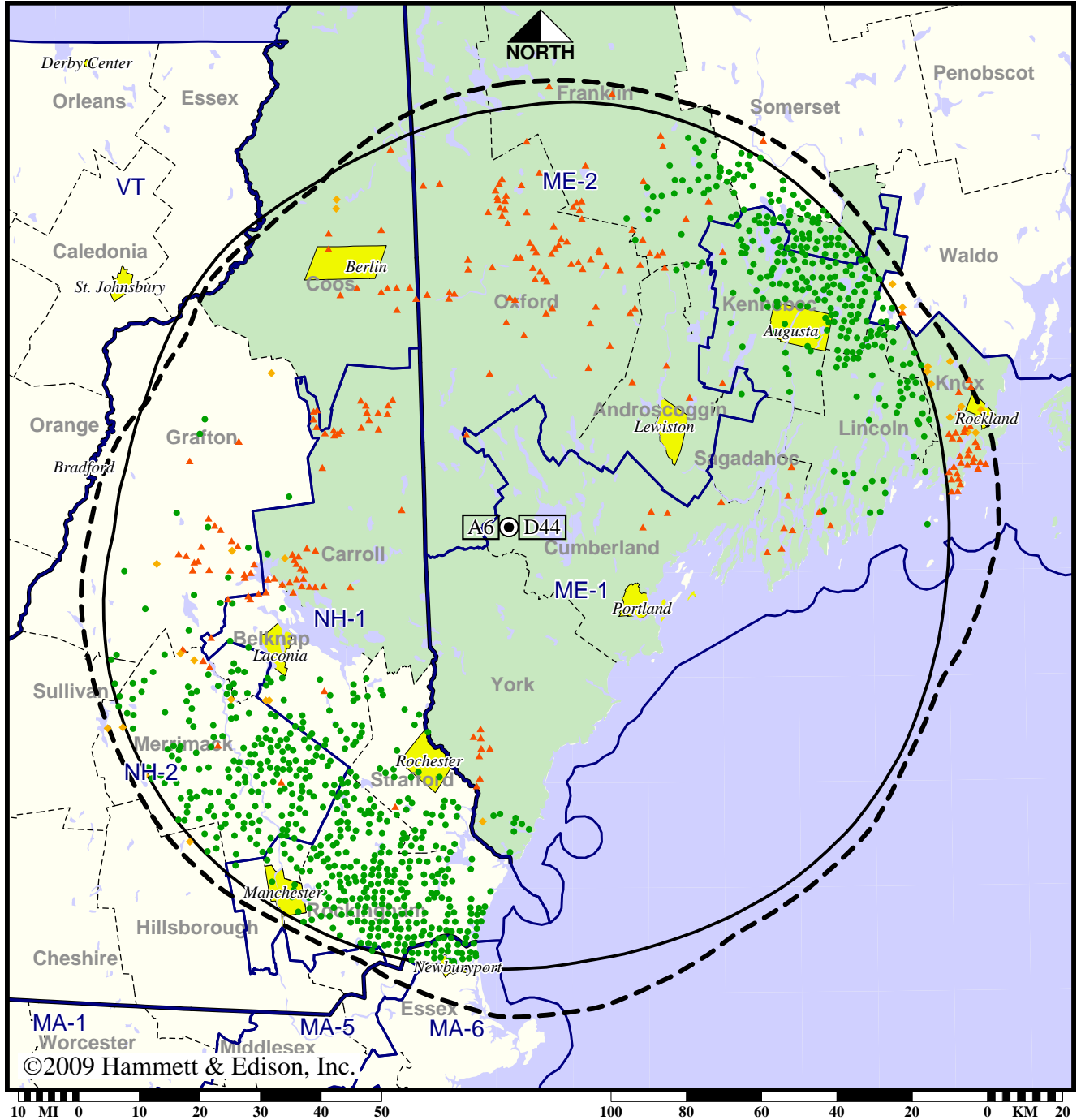
Analog service	983,693 persons
Digital service	1,246,193
Analog loss	27,411
Digital gain	289,911
Net gain	262,500

TV Station WCSH • Analog Channel 6, DTV Channel 44 • Portland, ME

Approved Post-Transition Operation: Licensed

Digital License (solid): 1000 kW ERP at 588 m HAAT, Network: NBC
 vs. Analog (dashed): 100 kW ERP at 610 m HAAT, Network: NBC

Market: Portland-Auburn, ME



- Coverage gained after DTV transition
- No symbol = no change in coverage
- ◆ Coverage lost but still served by same network
- ▲ Coverage lost and no other service by same network

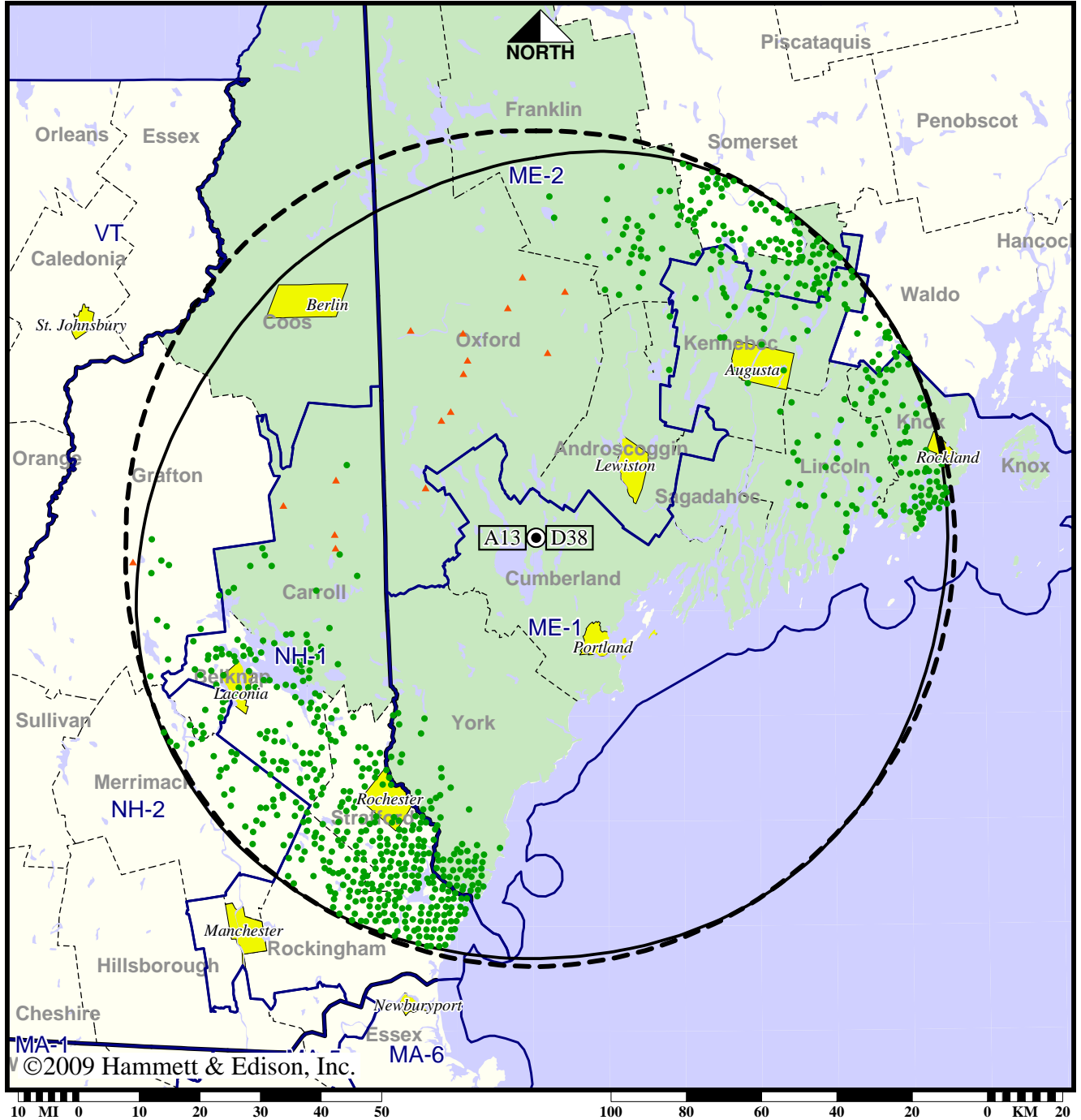
Analog service	983,693 persons
Digital service	1,246,193
Analog loss	27,411
Digital gain	289,911
Net gain	262,500

Station WGME-TV • Analog Channel 13, DTV Channel 38 • Portland, ME

Expected Operation on June 13: Licensed

Digital License (solid): 1000 kW ERP at 465 m HAAT, Network: CBS
 vs. Analog (dashed): 295 kW ERP at 462 m HAAT, Network: CBS

Market: Portland-Auburn, ME



- Coverage gained after DTV transition
- No symbol = no change in coverage
- ▲ Coverage lost after DTV transition

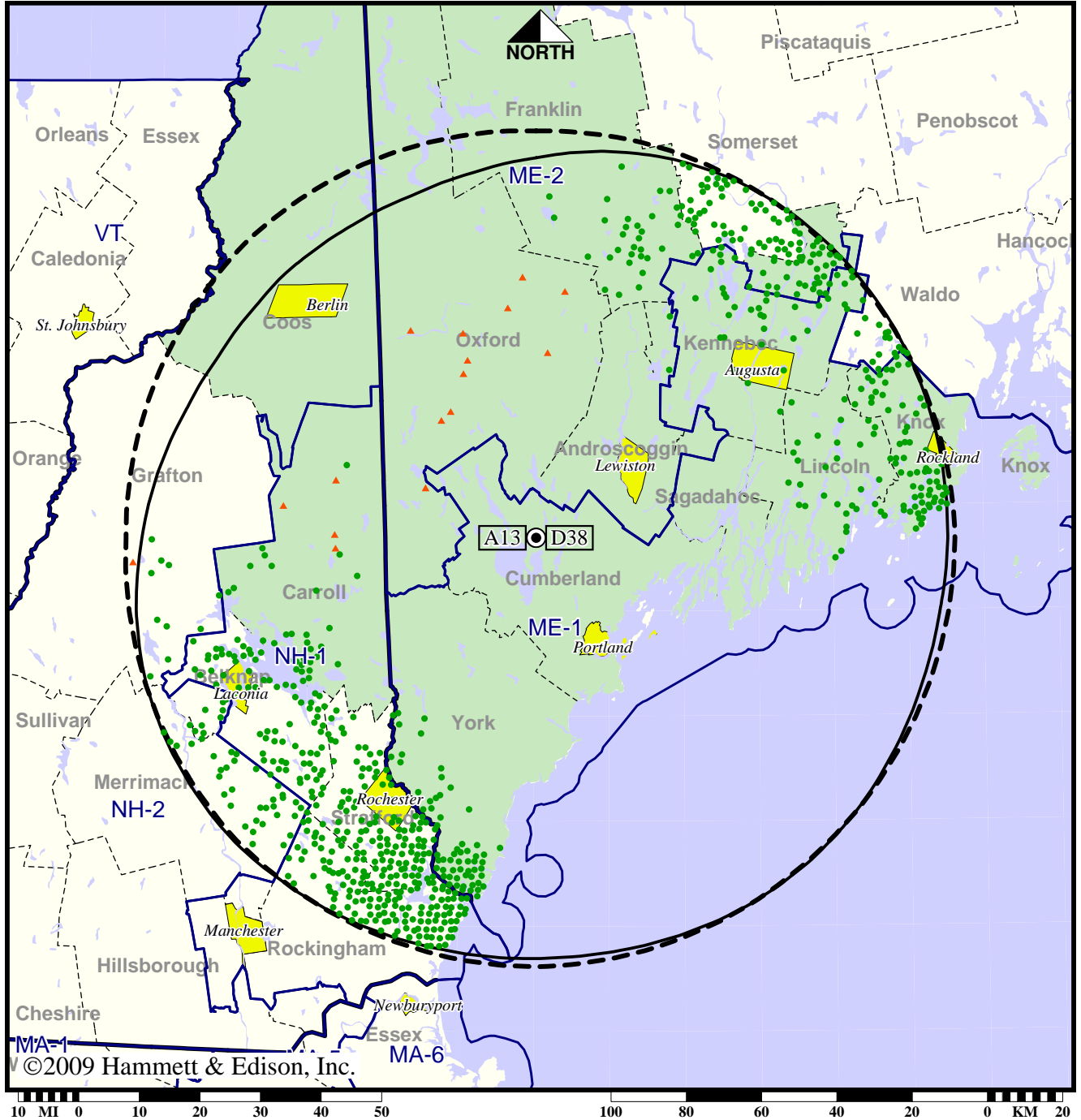
Analog service	822,747 persons
Digital service	1,063,461
Analog loss	1,617
Digital gain	242,331
Net gain	240,714

Station WGME-TV • Analog Channel 13, DTV Channel 38 • Portland, ME

Approved Post-Transition Operation: Licensed

Digital License (solid): 1000 kW ERP at 465 m HAAT, Network: CBS
 vs. Analog (dashed): 295 kW ERP at 462 m HAAT, Network: CBS

Market: Portland-Auburn, ME



- Coverage gained after DTV transition
- No symbol = no change in coverage
- ▲ Coverage lost after DTV transition

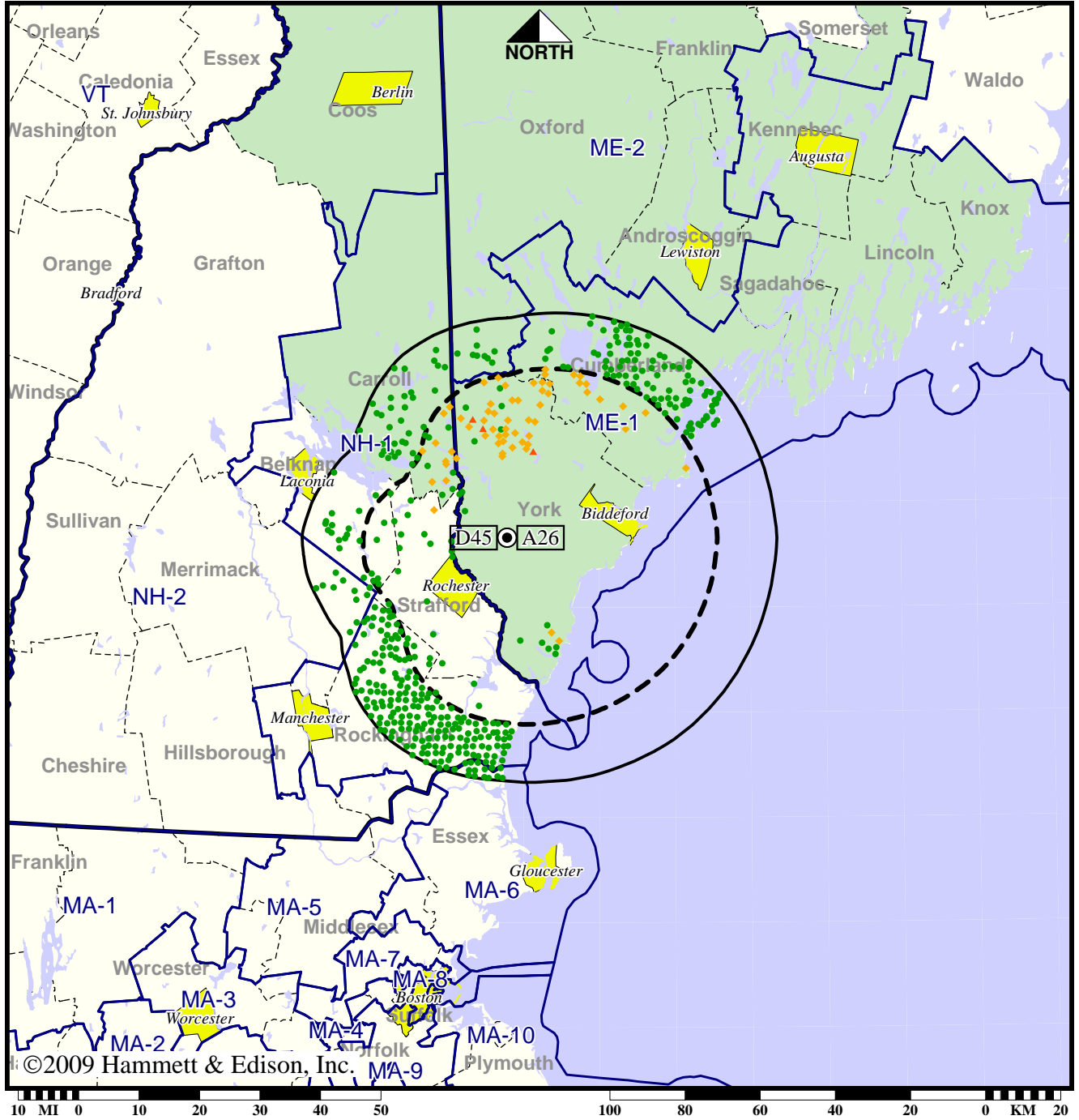
Analog service	822,747 persons
Digital service	1,063,461
Analog loss	1,617
Digital gain	242,331
Net gain	240,714

Station WMEA-TV • Analog Channel 26, DTV Channel 45 • Biddeford, ME

Expected Operation on June 13: Licensed

Digital License (solid): 50.0 kW ERP at 231 m HAAT, Network: PBS
 vs. Analog (dashed): 133 kW ERP at 231 m HAAT, Network: PBS

Market: Portland-Auburn, ME



- Coverage gained after DTV transition
- No symbol = no change in coverage
- ◆ Coverage lost but still served by same network
- ▲ Coverage lost and no other service by same network

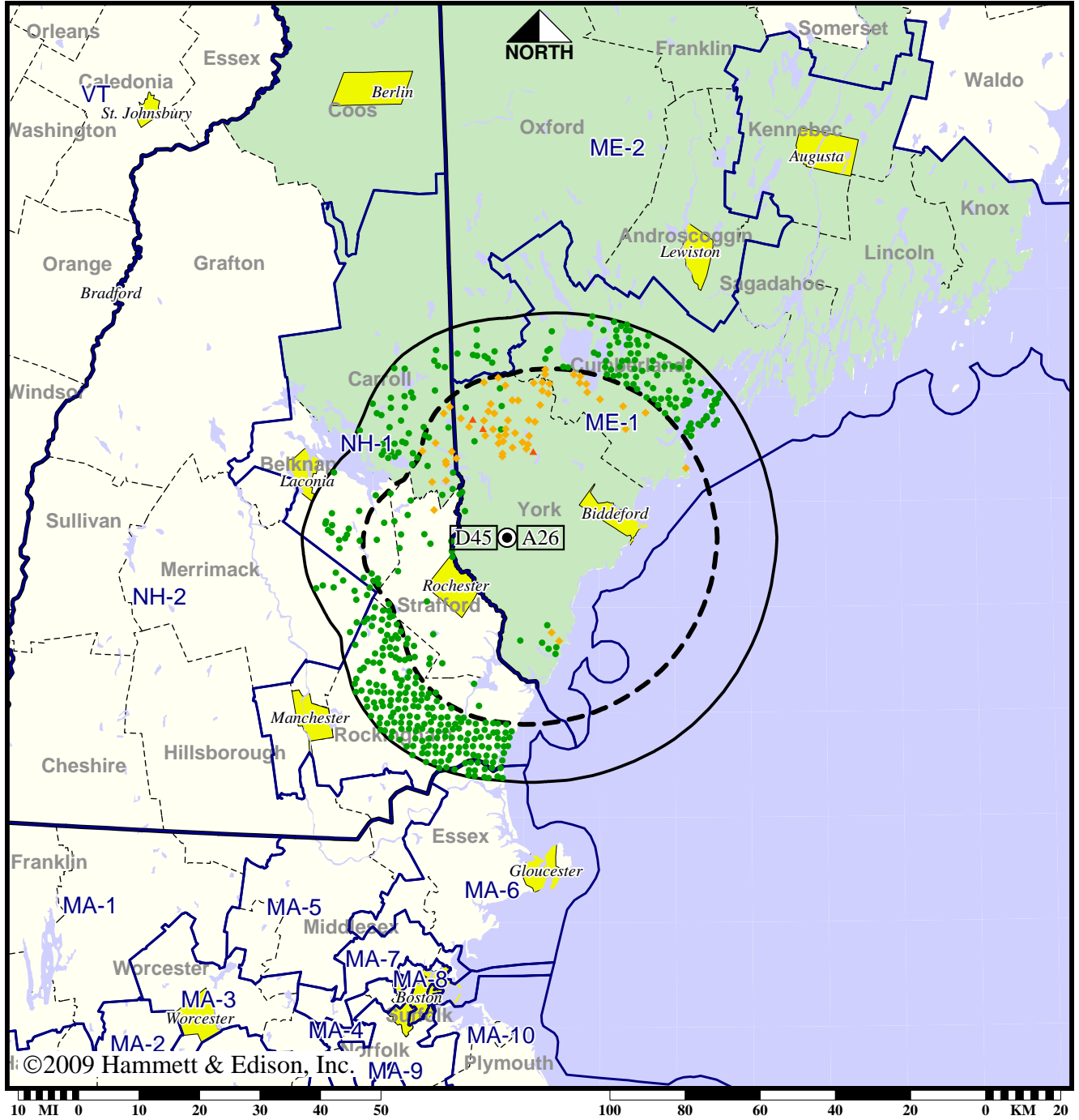
Analog service	494,633 persons
Digital service	641,677
Analog loss	9,952
Digital gain	156,996
Net gain	147,044

Station WMEA-TV • Analog Channel 26, DTV Channel 45 • Biddeford, ME

Approved Post-Transition Operation: Licensed

Digital License (solid): 50.0 kW ERP at 231 m HAAT, Network: PBS
 vs. Analog (dashed): 133 kW ERP at 231 m HAAT, Network: PBS

Market: Portland-Auburn, ME



- Coverage gained after DTV transition
- No symbol = no change in coverage
- ◆ Coverage lost but still served by same network
- ▲ Coverage lost and no other service by same network

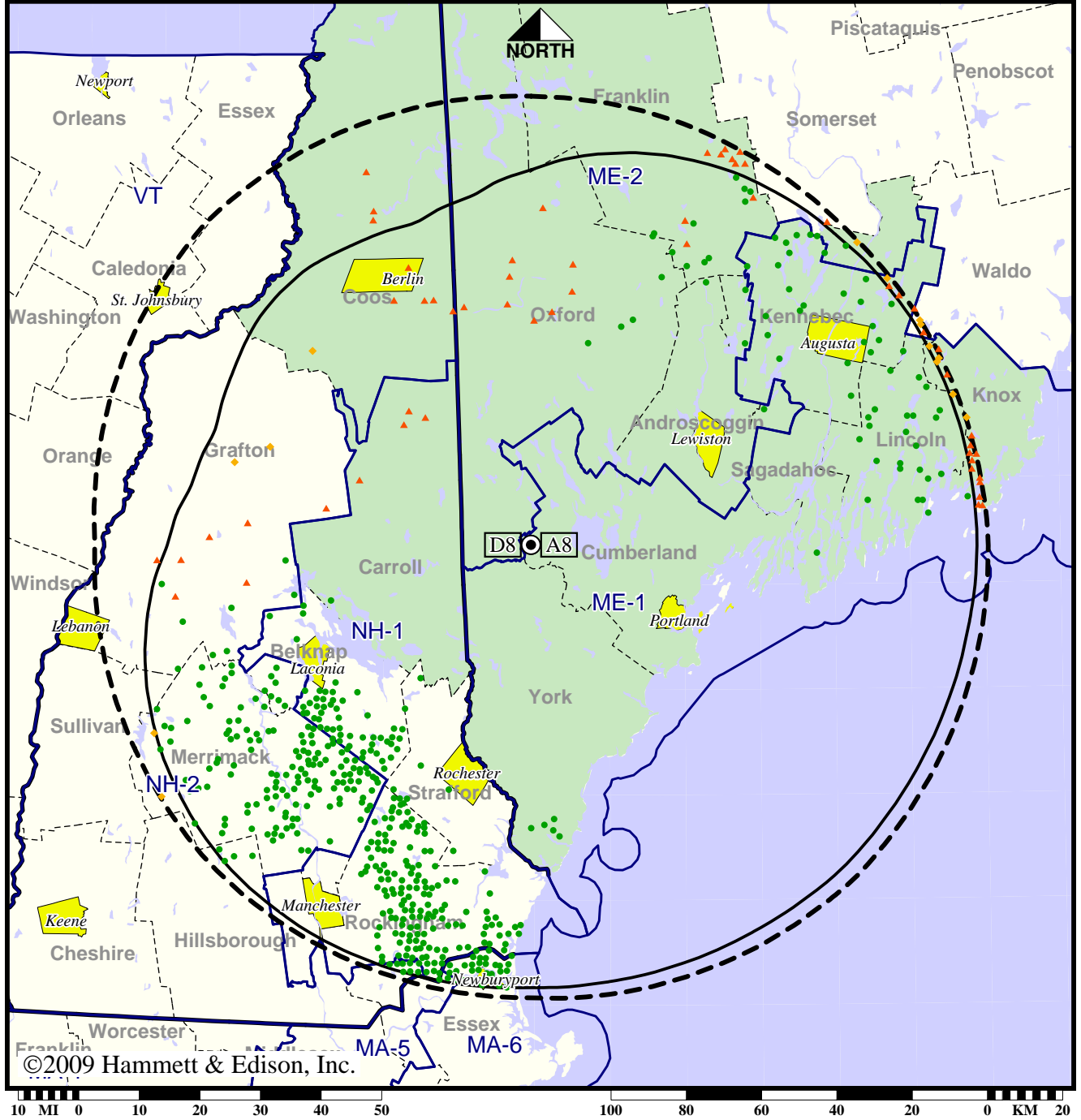
Analog service	494,633 persons
Digital service	641,677
Analog loss	9,952
Digital gain	156,996
Net gain	147,044

TV Station WMTW • Analog Channel 8, DTV Channel 8 • Poland Spring, ME

Expected Operation on June 13: Appendix B Facility

Digital Appendix B (solid): 21.3 kW ERP at 586 m HAAT, Network: ABC
 vs. Analog (dashed): 316 kW ERP at 608 m HAAT, Network: ABC

Market: Portland-Auburn, ME



- Coverage gained after DTV transition
- No symbol = no change in coverage
- ◆ Coverage lost but still served by same network
- ▲ Coverage lost and no other service by same network

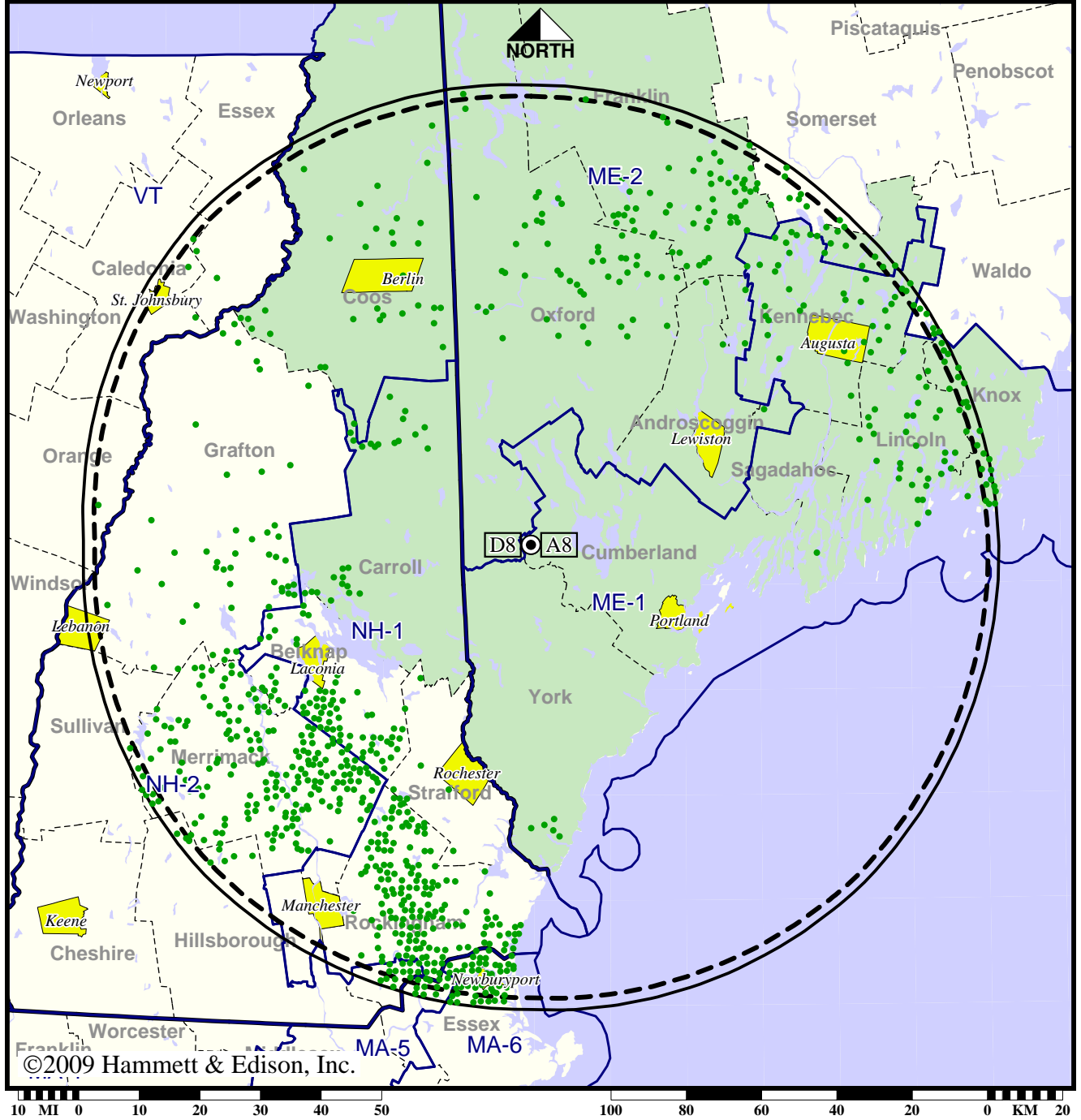
Analog service	1,039,658 persons
Digital service	1,221,784
Analog loss	6,979
Digital gain	189,105
Net gain	182,126

TV Station WMTW • Analog Channel 8, DTV Channel 8 • Poland Spring, ME

Approved Post-Transition Operation: Granted Construction Permit

Digital CP (solid): 29.8 kW ERP at 612 m HAAT, Network: ABC
 vs. Analog (dashed): 316 kW ERP at 608 m HAAT, Network: ABC

Market: Portland-Auburn, ME



● Coverage gained after DTV transition
 No symbol = no change in coverage

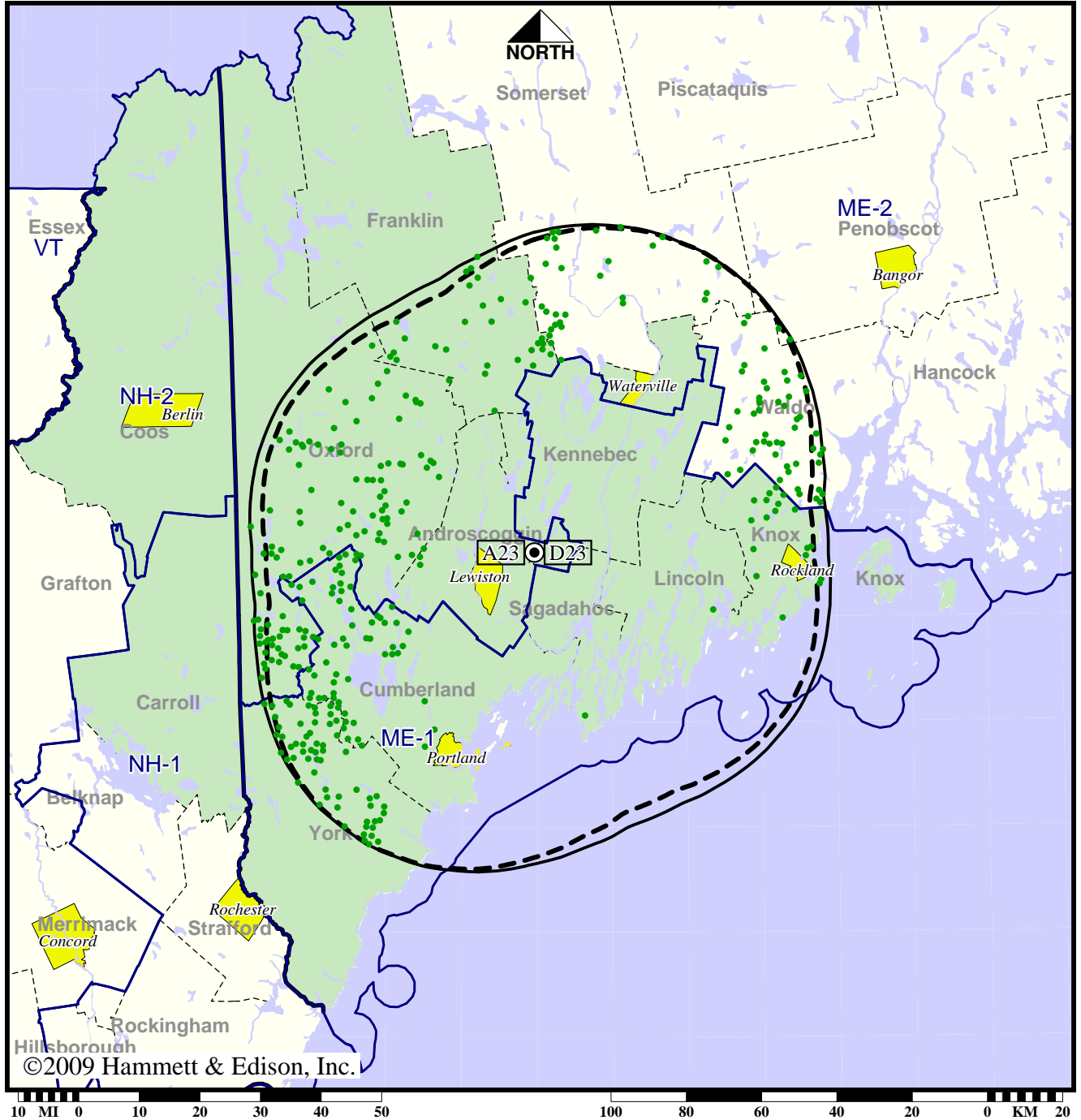
Analog service	1,039,658 persons
Digital service	1,328,507
Analog loss	0
Digital gain	288,849
Net gain	288,849

TV Station WPFO • Analog Channel 23, DTV Channel 23 • Waterville, ME

Expected Operation on June 13: Granted Construction Permit

Digital CP (solid): 213 kW ERP at 331 m HAAT, Network: Fox
 vs. Analog (dashed): 5000 kW ERP at 331 m HAAT, Network: Fox

Market: Portland-Auburn, ME



● Coverage gained after DTV transition
 No symbol = no change in coverage

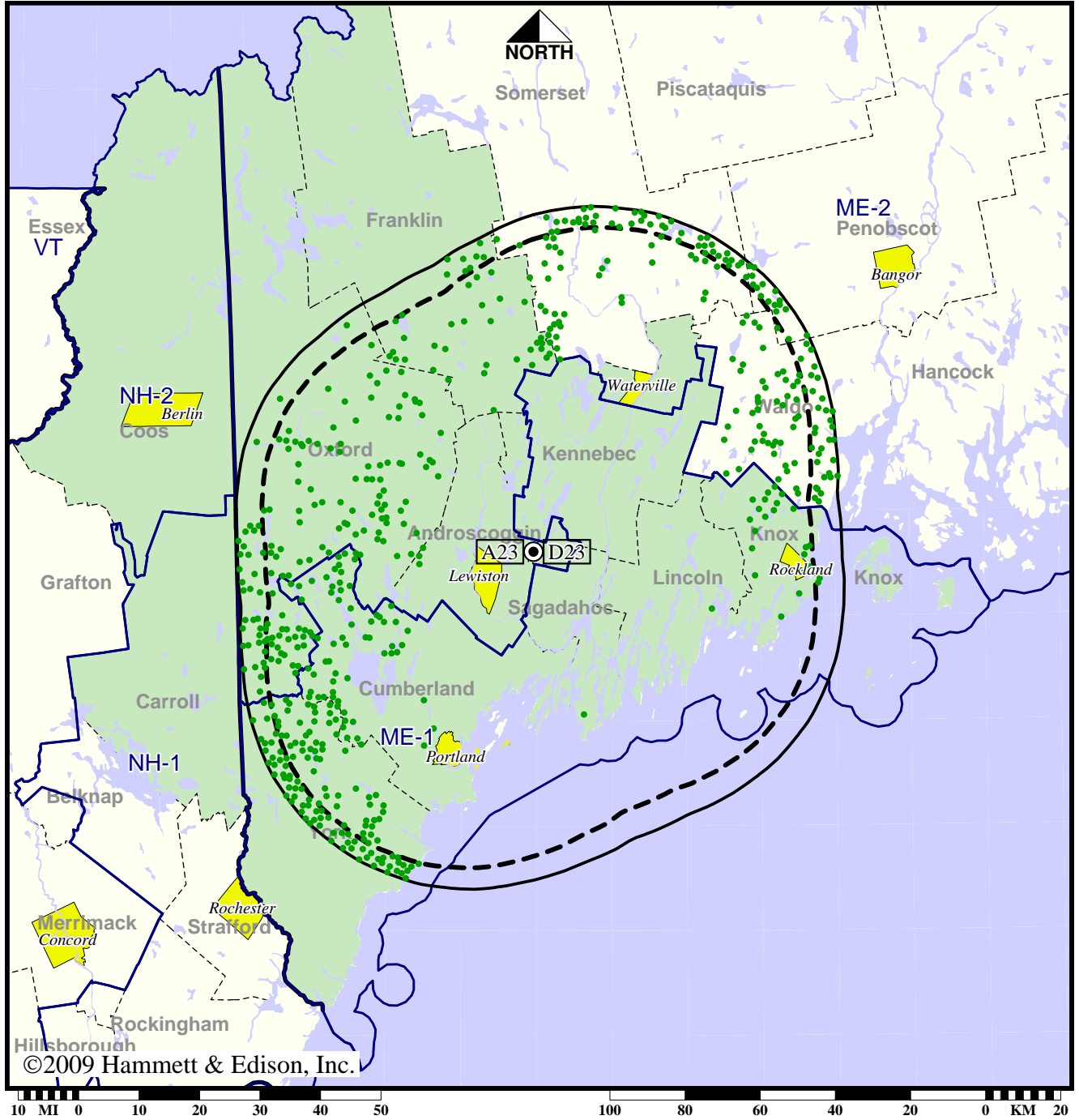
Analog service	719,659 persons
Digital service	764,312
Analog loss	0
Digital gain	44,653
Net gain	44,653

TV Station WPFO • Analog Channel 23, DTV Channel 23 • Waterville, ME

Approved Post-Transition Operation: Granted Construction Permit

Digital CP (solid): 390 kW ERP at 331 m HAAT, Network: Fox
 vs. Analog (dashed): 5000 kW ERP at 331 m HAAT, Network: Fox

Market: Portland-Auburn, ME



● Coverage gained after DTV transition
 No symbol = no change in coverage

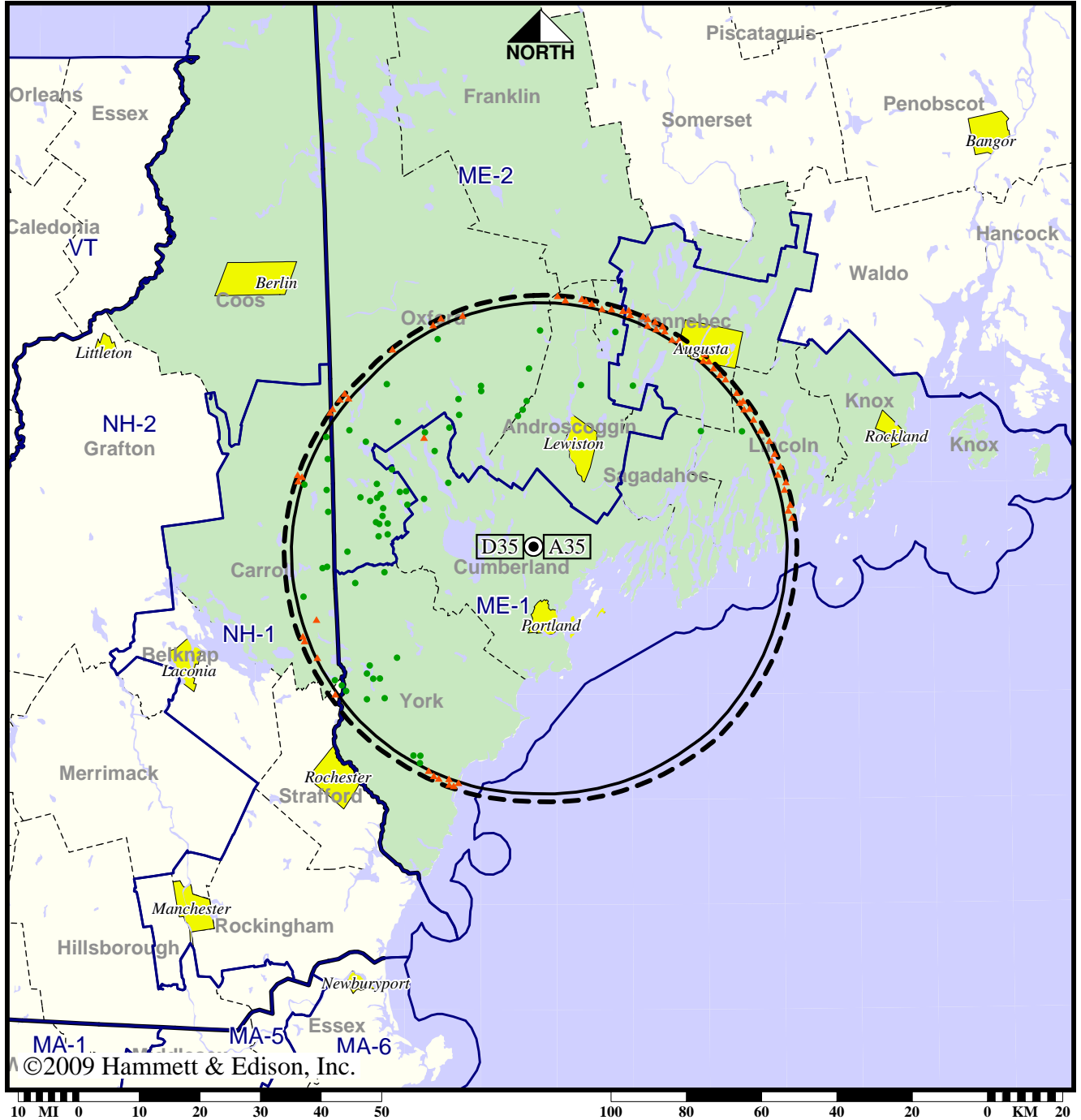
Analog service	719,659 persons
Digital service	788,878
Analog loss	0
Digital gain	69,219
Net gain	69,219

TV Station WPME • Analog Channel 35, DTV Channel 35 • Lewiston, ME

Expected Operation on June 13: Granted Construction Permit

Digital CP (solid): 14.3 kW ERP at 278 m HAAT
 vs. Analog (dashed): 1100 kW ERP at 278 m HAAT

Market: Portland-Auburn, ME



- Coverage gained after DTV transition
- No symbol = no change in coverage
- ▲ Coverage lost after DTV transition

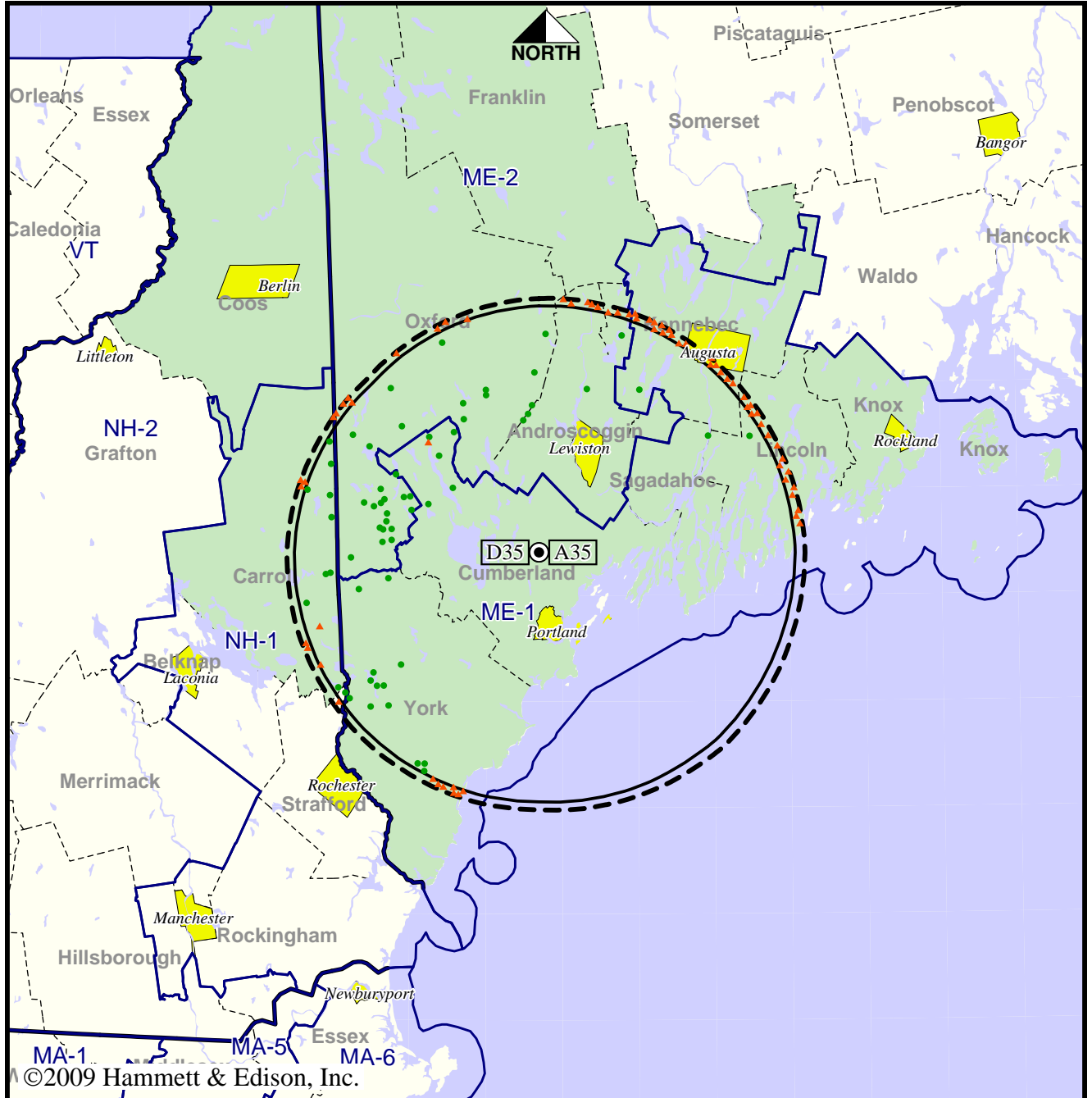
Analog service	612,526 persons
Digital service	606,361
Analog loss	12,517
Digital gain	6,352
Net gain	-6,165

TV Station WPME • Analog Channel 35, DTV Channel 35 • Lewiston, ME

Approved Post-Transition Operation: Granted Construction Permit

Digital CP (solid): 14.3 kW ERP at 278 m HAAT
 vs. Analog (dashed): 1100 kW ERP at 278 m HAAT

Market: Portland-Auburn, ME



- Coverage gained after DTV transition
- No symbol = no change in coverage
- ▲ Coverage lost after DTV transition

Analog service	612,526 persons
Digital service	606,361
Analog loss	12,517
Digital gain	6,352
Net gain	-6,165

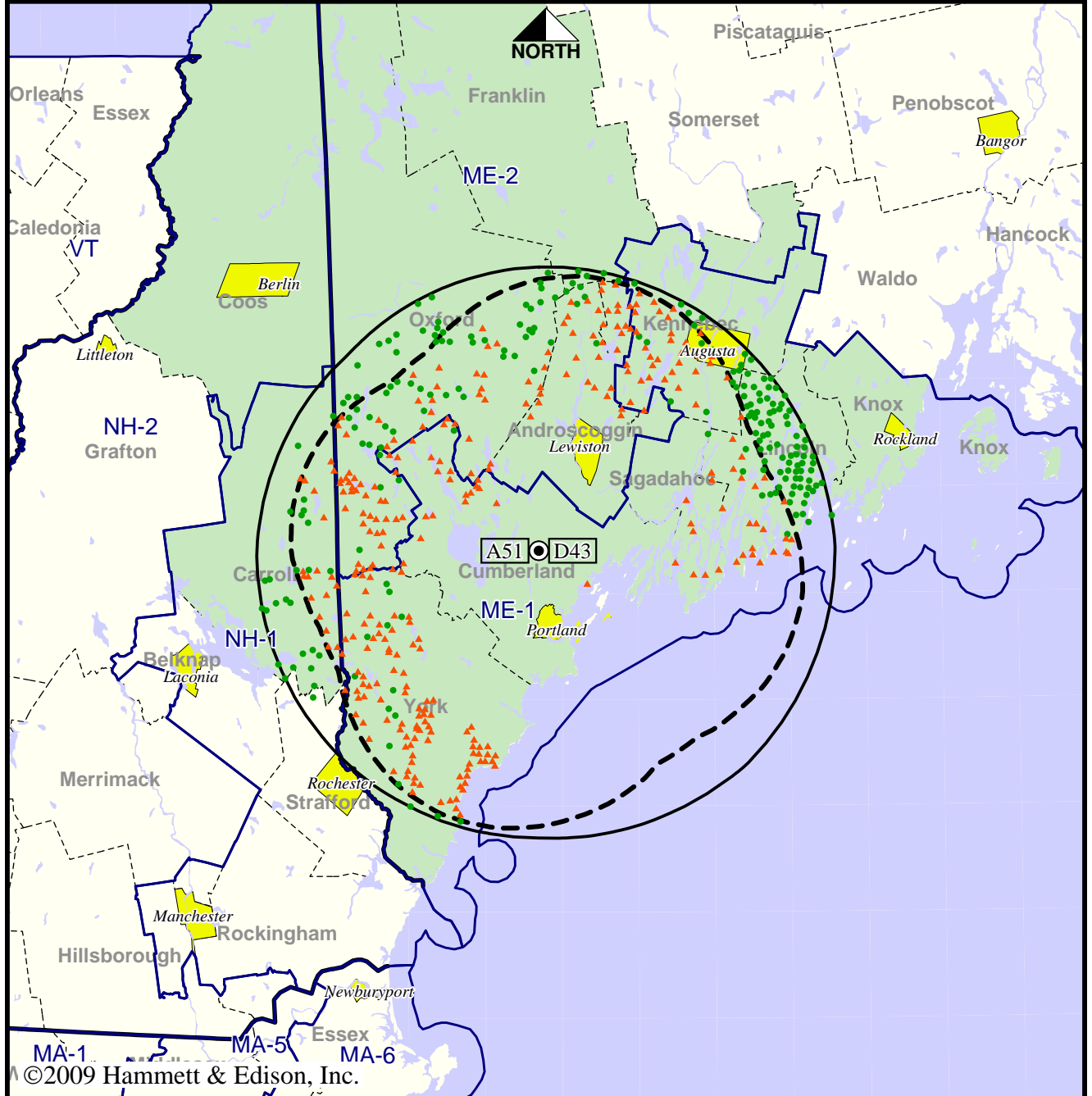
©2009 Hammett & Edison, Inc.

TV Station WPXT • Analog Channel 51, DTV Channel 43 • Portland, ME

Expected Operation on June 13: Licensed

Digital License (solid): 137 kW ERP at 254 m HAAT
 vs. Analog (dashed): 3020 kW ERP at 280 m HAAT

Market: Portland-Auburn, ME



- Coverage gained after DTV transition
- No symbol = no change in coverage
- ▲ Coverage lost after DTV transition

Analog service	613,611 persons
Digital service	572,224
Analog loss	64,266
Digital gain	22,879
Net gain	-41,387

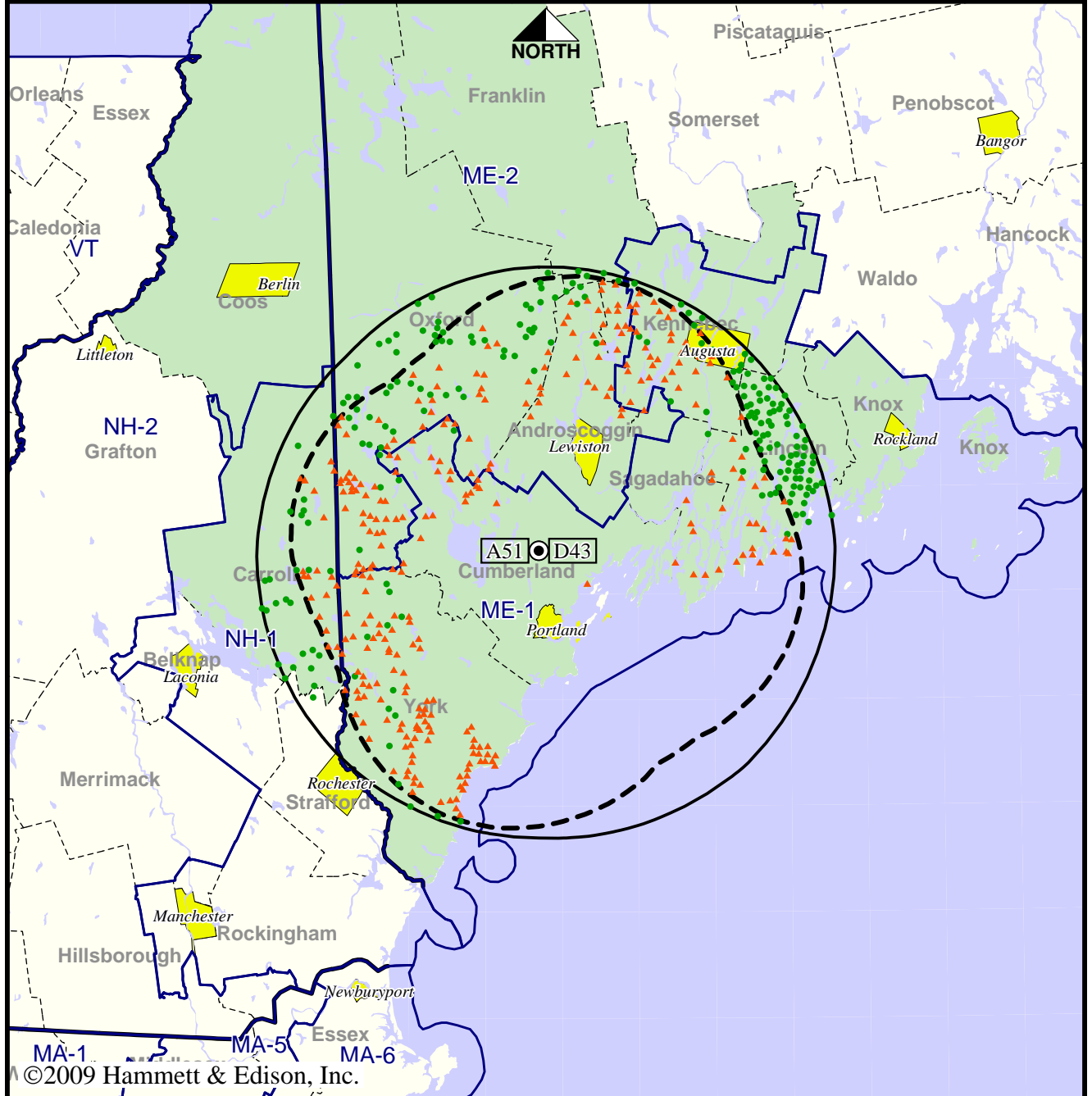
©2009 Hammett & Edison, Inc.

TV Station WPXT • Analog Channel 51, DTV Channel 43 • Portland, ME

Approved Post-Transition Operation: Licensed

Digital License (solid): 137 kW ERP at 254 m HAAT
 vs. Analog (dashed): 3020 kW ERP at 280 m HAAT

Market: Portland-Auburn, ME



- Coverage gained after DTV transition
- No symbol = no change in coverage
- ▲ Coverage lost after DTV transition

Analog service	613,611 persons
Digital service	572,224
Analog loss	64,266
Digital gain	22,879
Net gain	-41,387

©2009 Hammett & Edison, Inc.