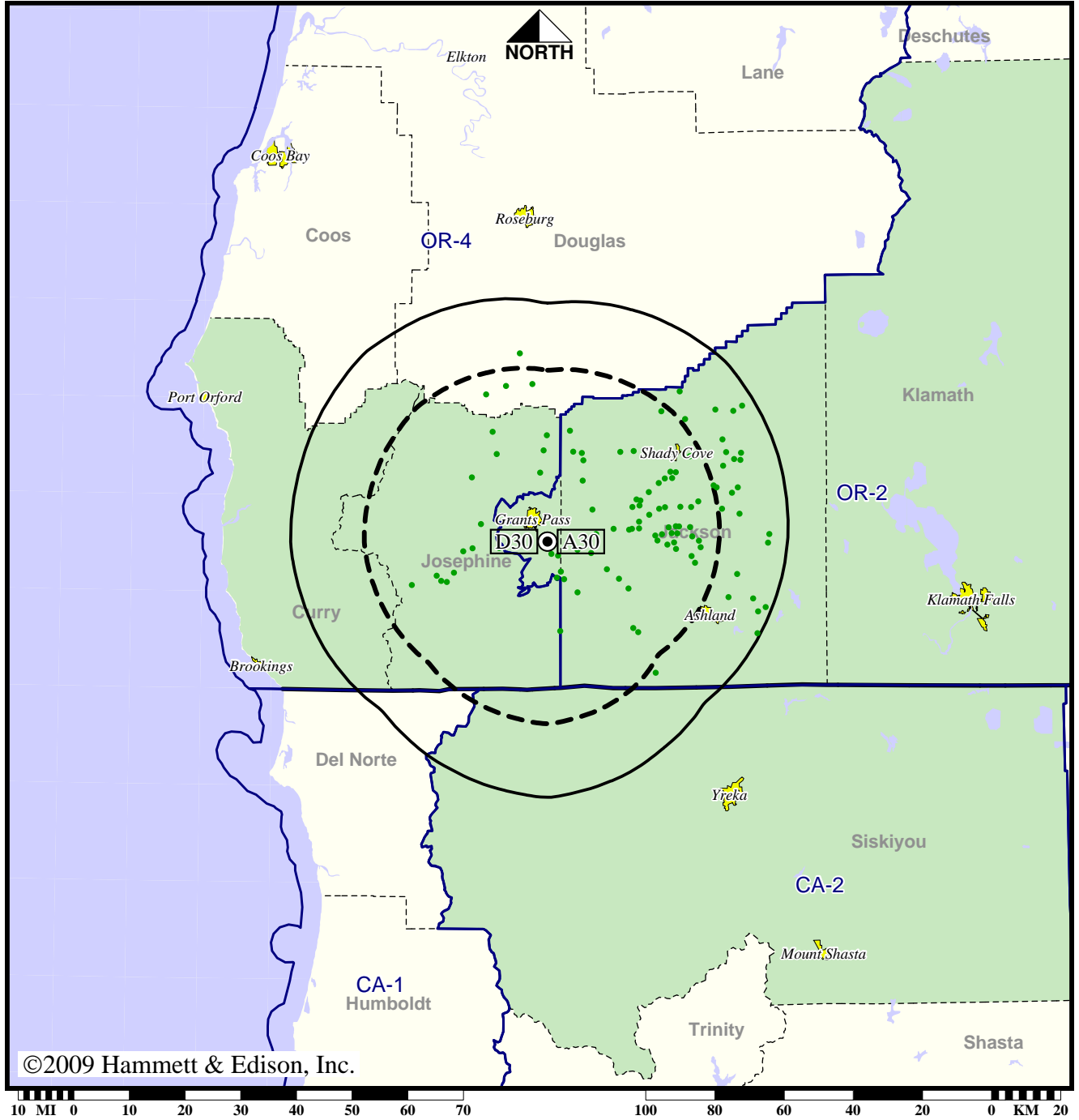


TV Station KBLN • Analog Channel 30, DTV Channel 30 • Grants Pass, OR

Expected Operation on June 13: Granted Construction Permit

Digital CP (solid): 2.00 kW ERP at 654 m HAAT
 vs. Analog (dashed): 9.77 kW ERP at 654 m HAAT

Market: Medford-Klamath Falls, OR



©2009 Hammett & Edison, Inc.

- Coverage gained after DTV transition
- No symbol = no change in coverage

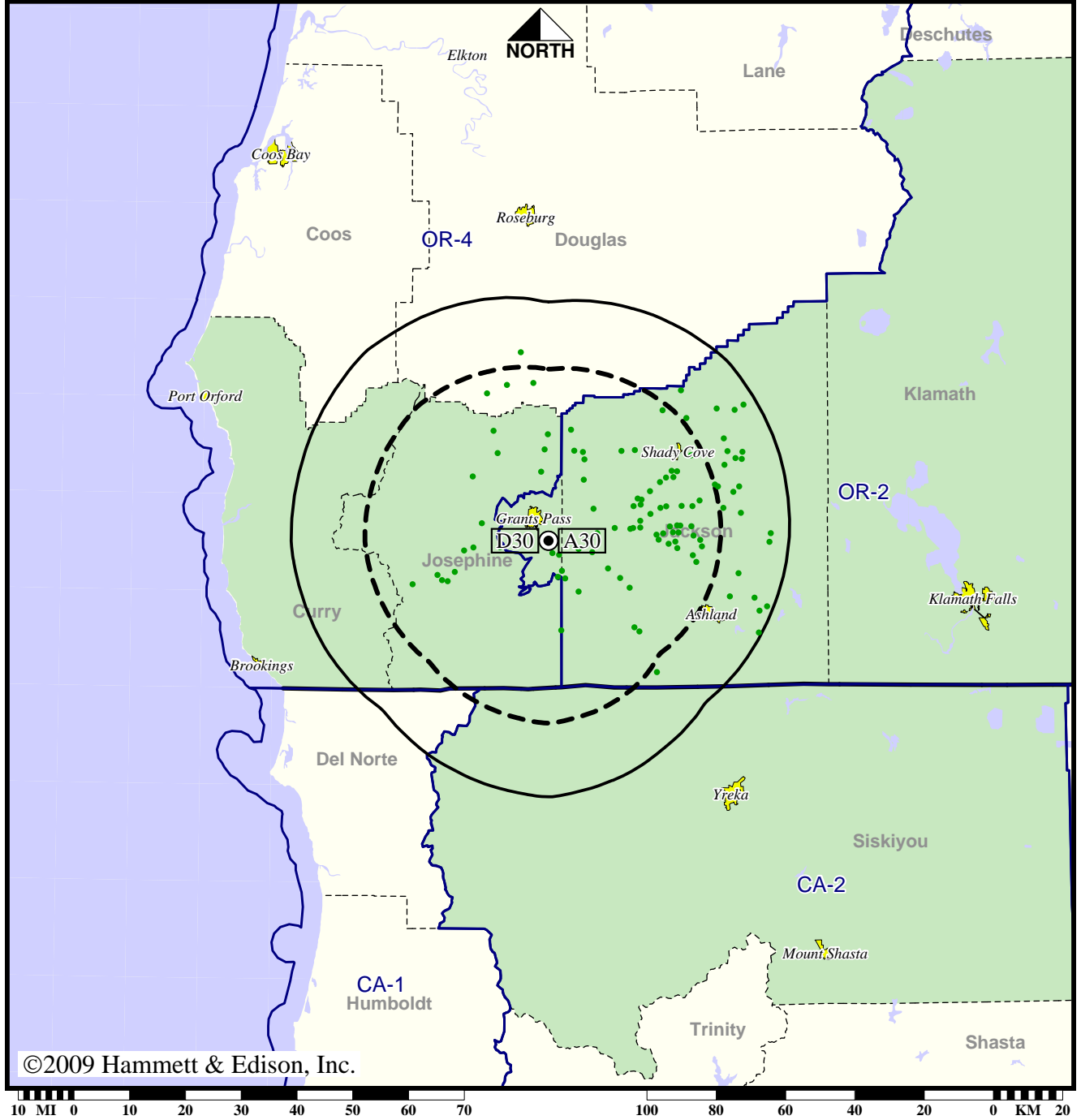
Analog service	80,469 persons
Digital service	95,948
Analog loss	0
Digital gain	15,479
Net gain	15,479

TV Station KBLN • Analog Channel 30, DTV Channel 30 • Grants Pass, OR

Approved Post-Transition Operation: Granted Construction Permit

Digital CP (solid): 2.00 kW ERP at 654 m HAAT
 vs. Analog (dashed): 9.77 kW ERP at 654 m HAAT

Market: Medford-Klamath Falls, OR



©2009 Hammett & Edison, Inc.

- Coverage gained after DTV transition
- No symbol = no change in coverage

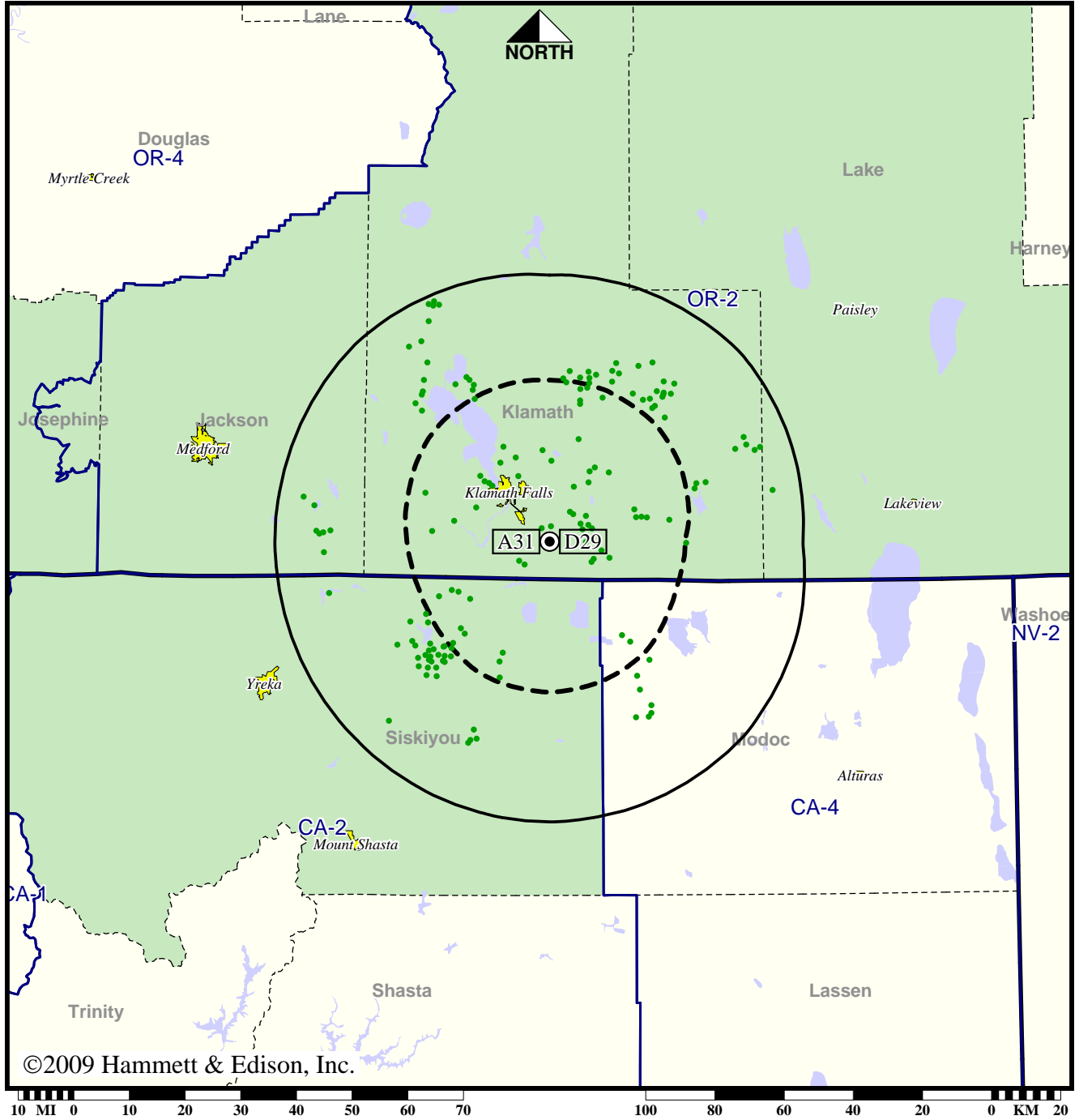
Analog service	80,469 persons
Digital service	95,948
Analog loss	0
Digital gain	15,479
Net gain	15,479

TV Station KDKF • Analog Channel 31, DTV Channel 29 • Klamath Falls, OR

Expected Operation on June 13: Granted Construction Permit

**Digital CP (solid): 4.87 kW ERP at 651 m HAAT, Network: ABC
vs. Analog (dashed): 6.03 kW ERP at 691 m HAAT, Network: ABC**

Market: Medford-Klamath Falls, OR



©2009 Hammett & Edison, Inc.

- Coverage gained after DTV transition
- No symbol = no change in coverage

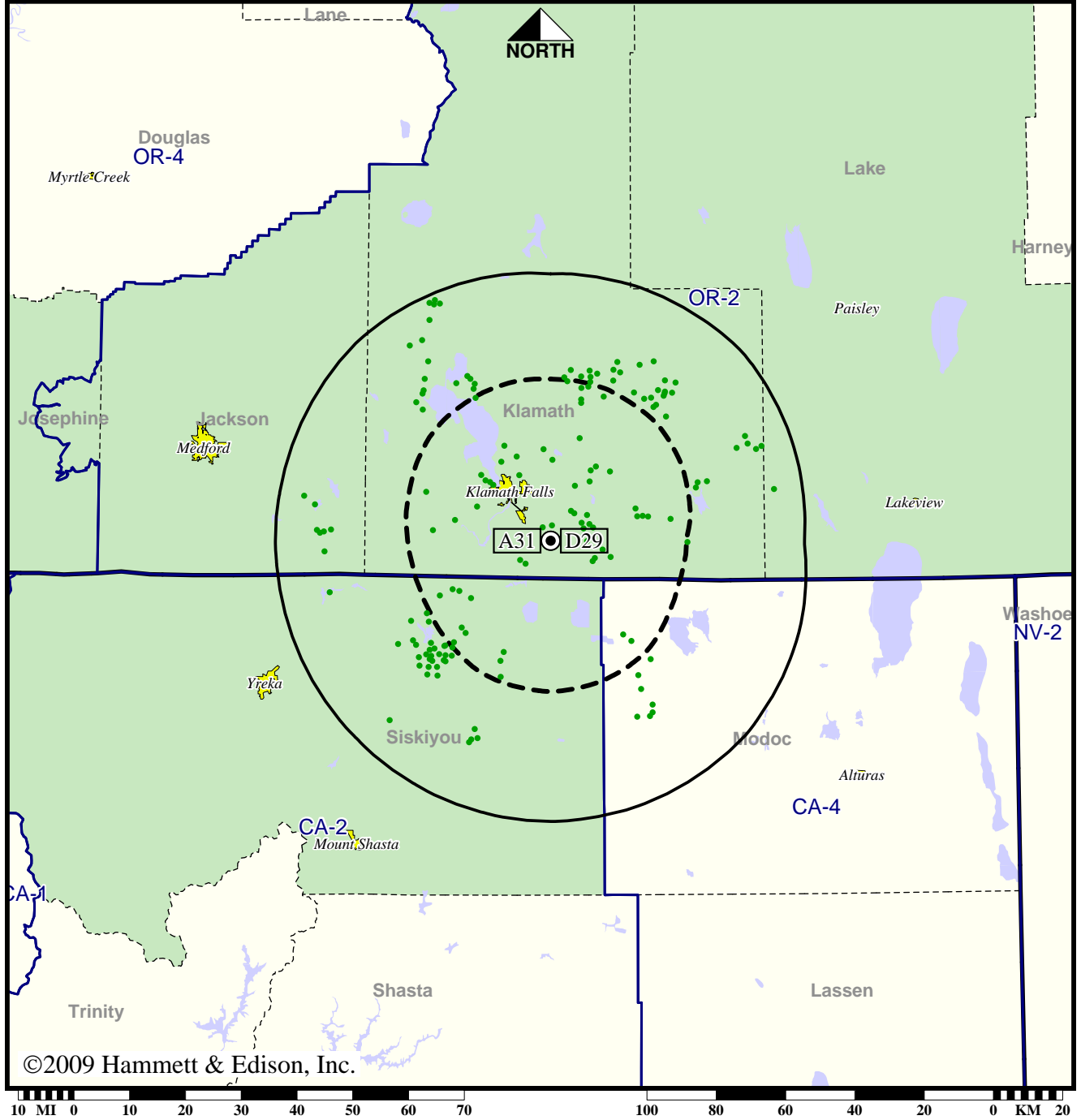
Analog service	58,308 persons
Digital service	60,988
Analog loss	0
Digital gain	2,680
Net gain	2,680

TV Station KDKF • Analog Channel 31, DTV Channel 29 • Klamath Falls, OR

Approved Post-Transition Operation: Granted Construction Permit

**Digital CP (solid): 4.87 kW ERP at 651 m HAAT, Network: ABC
vs. Analog (dashed): 6.03 kW ERP at 691 m HAAT, Network: ABC**

Market: Medford-Klamath Falls, OR



©2009 Hammett & Edison, Inc.

● Coverage gained after DTV transition
No symbol = no change in coverage

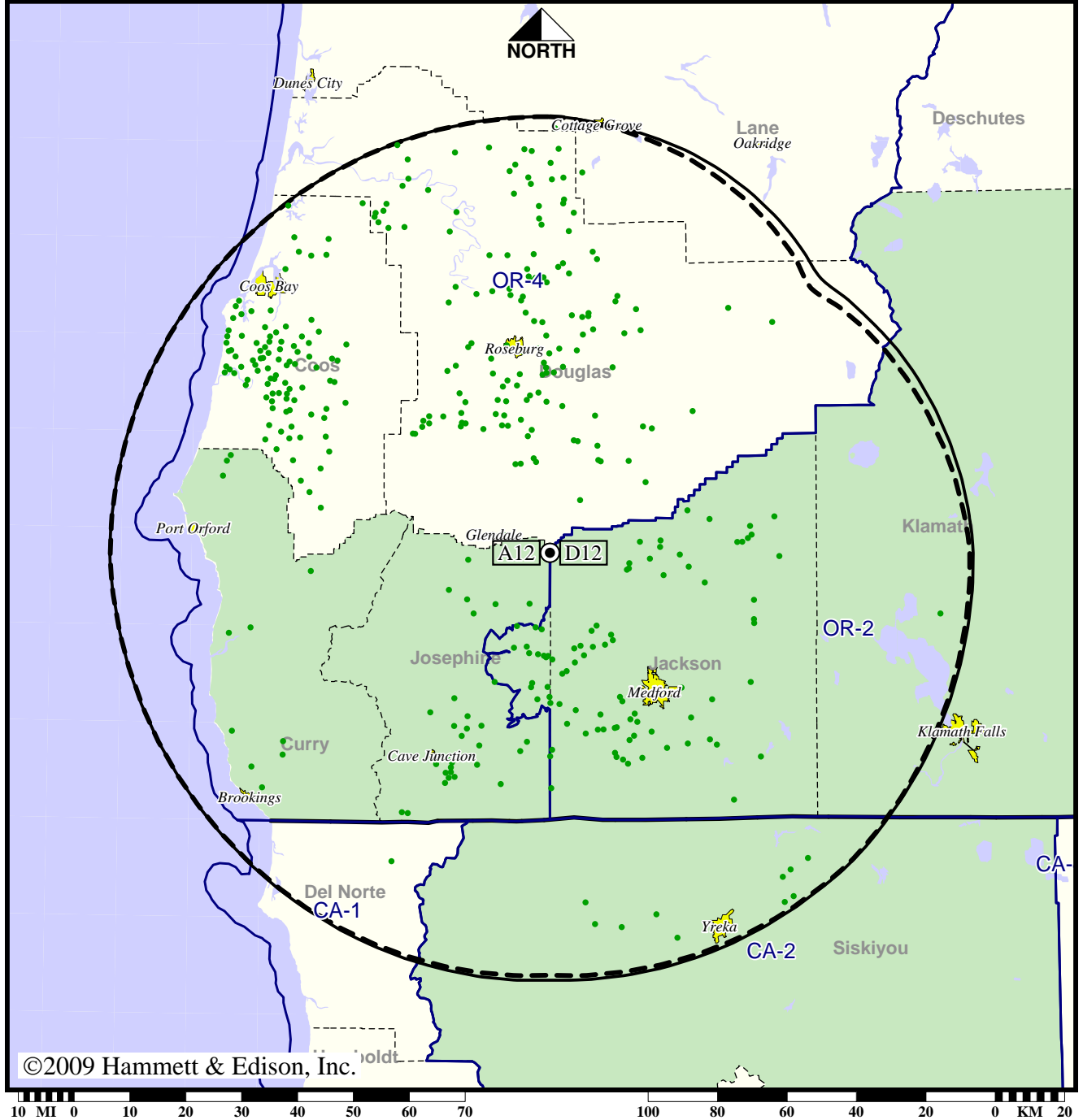
Analog service	58,308 persons
Digital service	60,988
Analog loss	0
Digital gain	2,680
Net gain	2,680

TV Station KDRV • Analog Channel 12, DTV Channel 12 • Medford, OR

Expected Operation on June 13: Granted Construction Permit

**Digital CP (solid): 16.9 kW ERP at 823 m HAAT, Network: ABC
vs. Analog (dashed): 191 kW ERP at 823 m HAAT, Network: ABC**

Market: Medford-Klamath Falls, OR



©2009 Hammett & Edison, Inc.

● Coverage gained after DTV transition
No symbol = no change in coverage

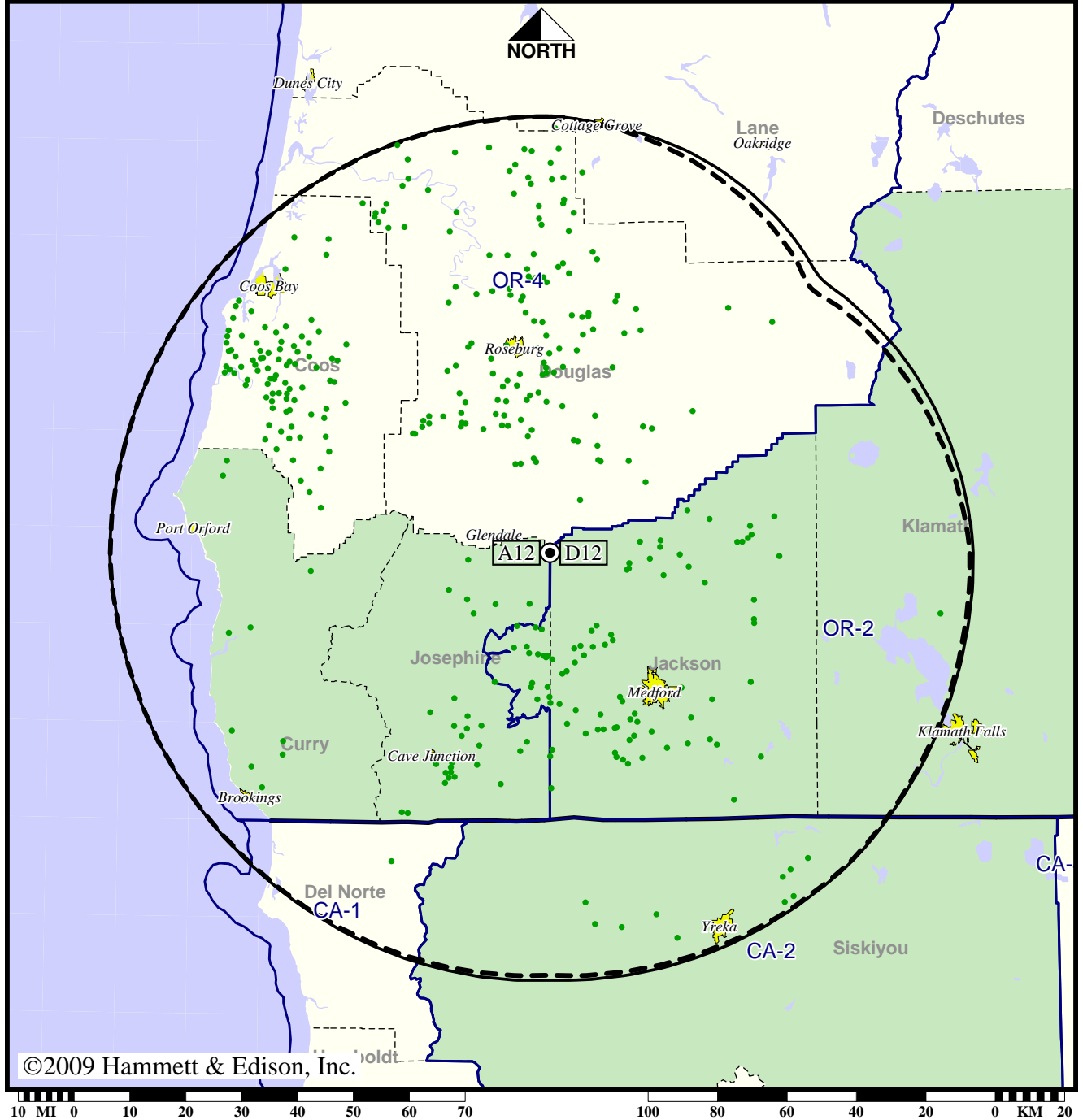
Analog service	300,434 persons
Digital service	343,033
Analog loss	0
Digital gain	42,599
Net gain	42,599

TV Station KDRV • Analog Channel 12, DTV Channel 12 • Medford, OR

Approved Post-Transition Operation: Granted Construction Permit

Digital CP (solid): 16.9 kW ERP at 823 m HAAT, Network: ABC
 vs. Analog (dashed): 191 kW ERP at 823 m HAAT, Network: ABC

Market: Medford-Klamath Falls, OR



©2009 Hammett & Edison, Inc.

● Coverage gained after DTV transition
 No symbol = no change in coverage

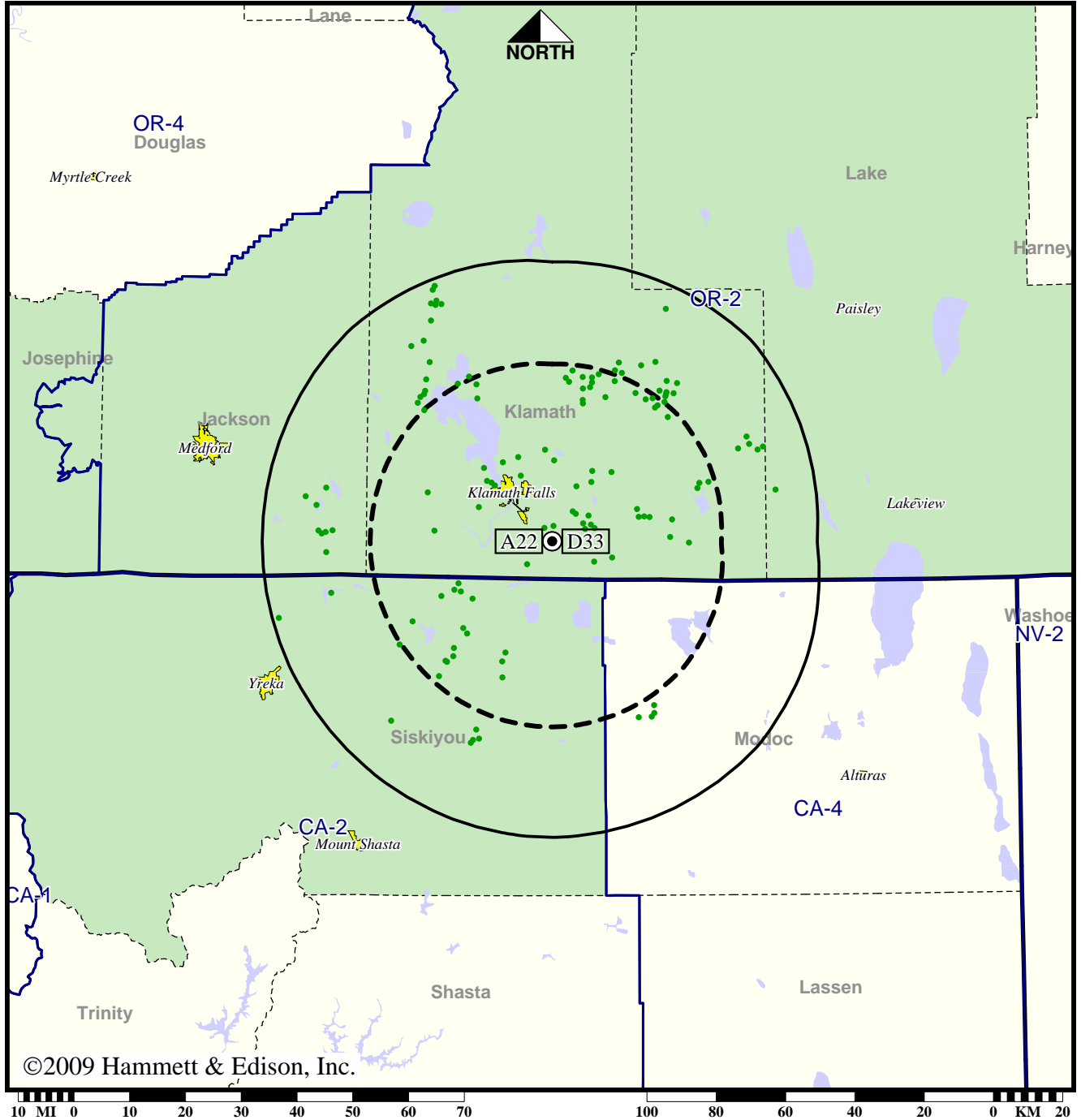
Analog service	300,434 persons
Digital service	341,866
Analog loss	0
Digital gain	41,432
Net gain	41,432

TV Station KFTS • Analog Channel 22, DTV Channel 33 • Klamath Falls, OR

Expected Operation on June 13: Licensed

Digital License (solid): 9.60 kW ERP at 649 m HAAT, Network: PBS
 vs. Analog (dashed): 9.33 kW ERP at 656 m HAAT, Network: PBS

Market: Medford-Klamath Falls, OR



©2009 Hammett & Edison, Inc.

● Coverage gained after DTV transition
 No symbol = no change in coverage

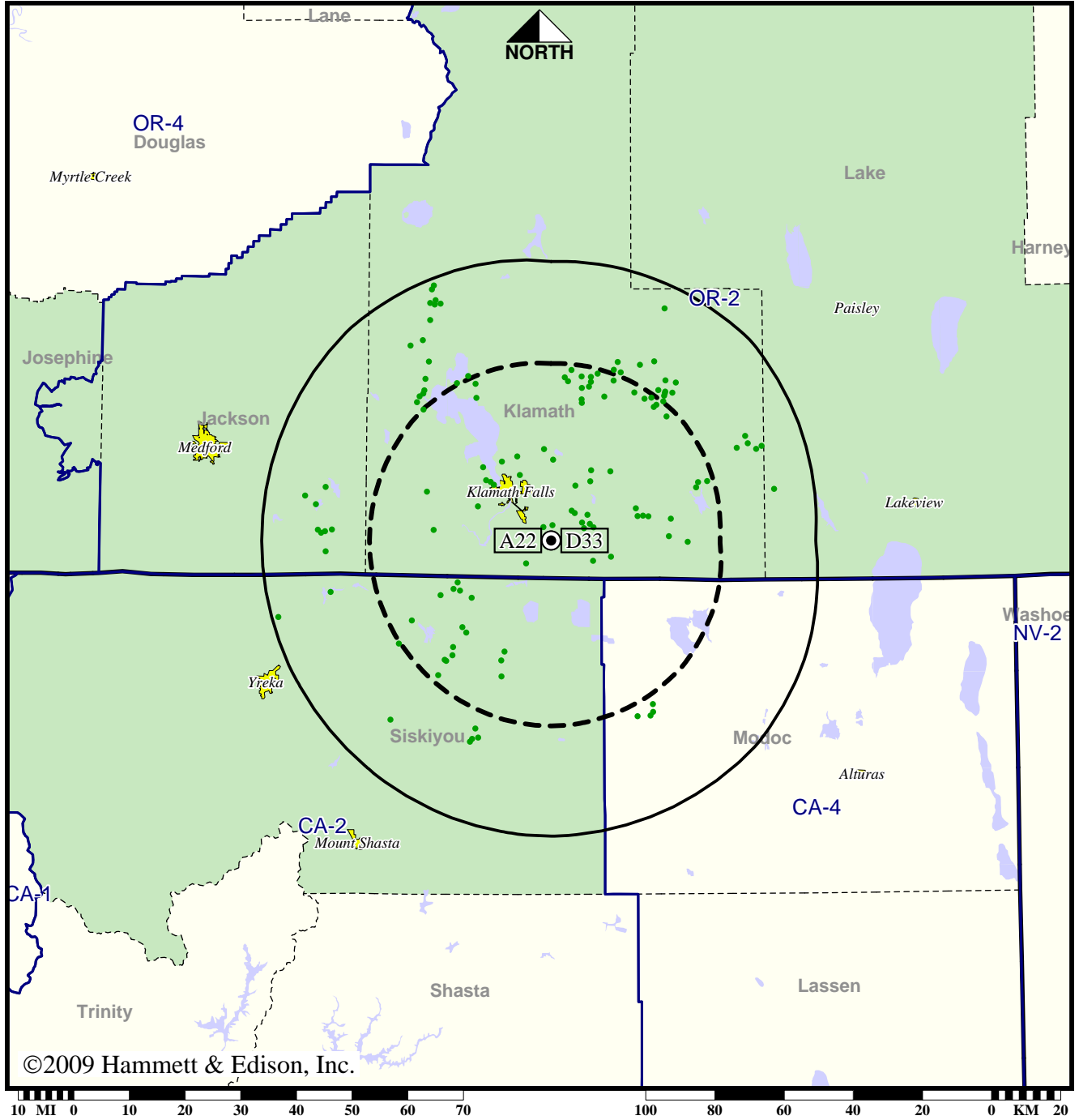
Analog service	58,840 persons
Digital service	61,233
Analog loss	0
Digital gain	2,393
Net gain	2,393

TV Station KFTS • Analog Channel 22, DTV Channel 33 • Klamath Falls, OR

Approved Post-Transition Operation: Licensed

Digital License (solid): 9.60 kW ERP at 649 m HAAT, Network: PBS
 vs. Analog (dashed): 9.33 kW ERP at 656 m HAAT, Network: PBS

Market: Medford-Klamath Falls, OR



©2009 Hammett & Edison, Inc.

● Coverage gained after DTV transition
 No symbol = no change in coverage

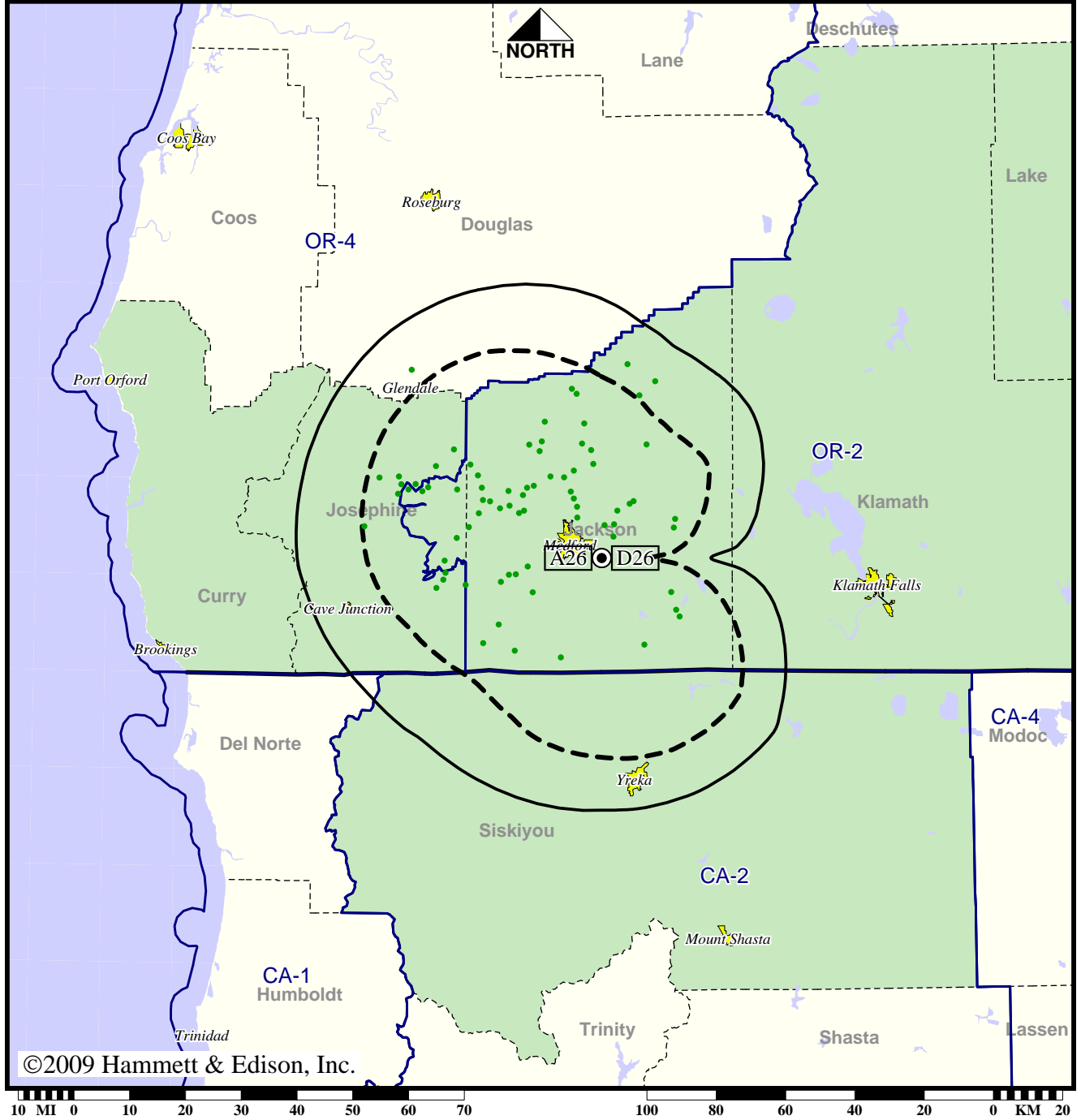
Analog service	58,840 persons
Digital service	61,233
Analog loss	0
Digital gain	2,393
Net gain	2,393

TV Station KMVU • Analog Channel 26, DTV Channel 26 • Medford, OR

Expected Operation on June 13: Special Temporary Authorization

Digital STA (solid): 16.2 kW ERP at 441 m HAAT, Network: Fox
 vs. Analog (dashed): 110 kW ERP at 440 m HAAT, Network: Fox

Market: Medford-Klamath Falls, OR



©2009 Hammett & Edison, Inc.

● Coverage gained after DTV transition
 No symbol = no change in coverage

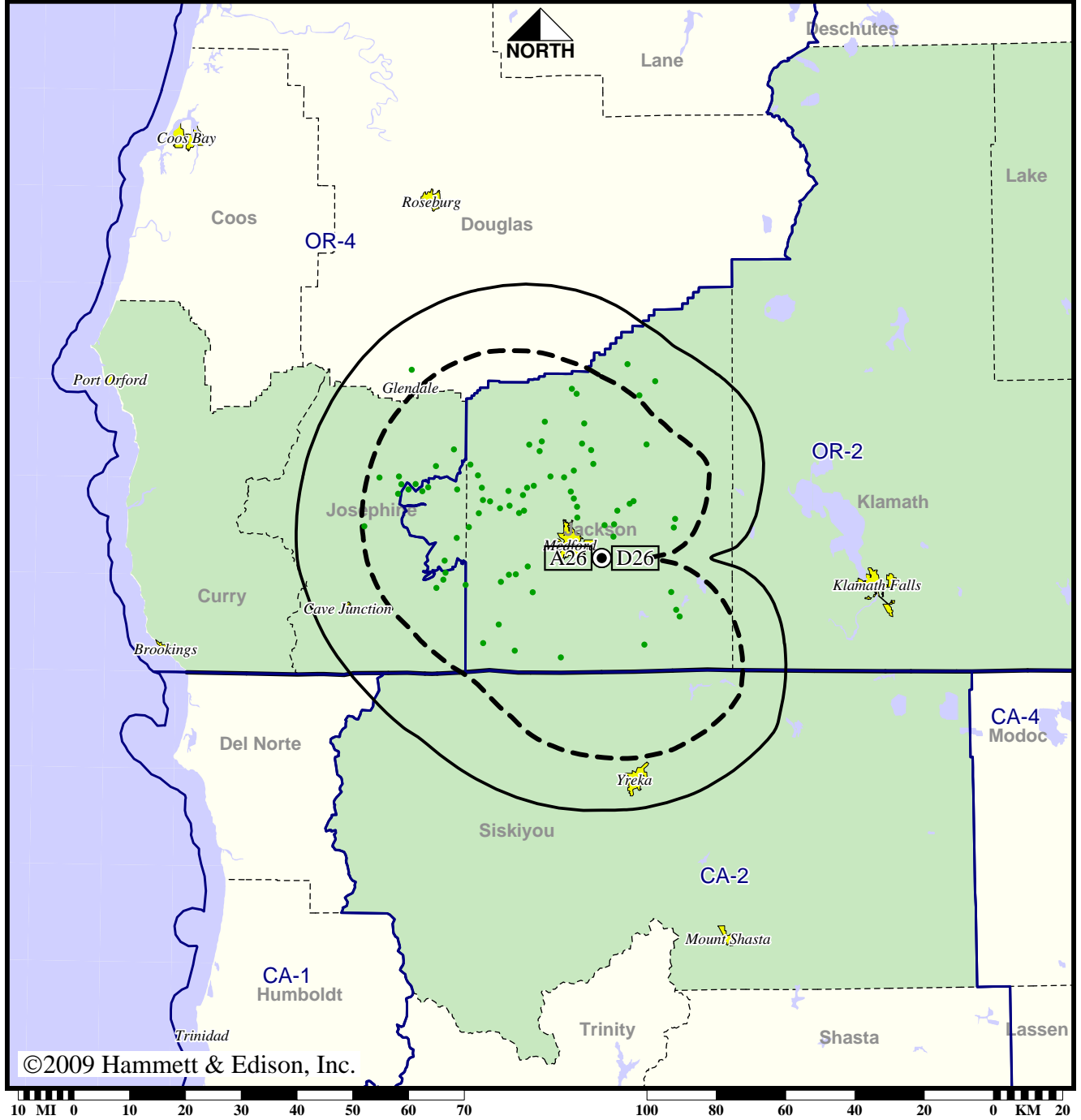
Analog service	156,911 persons
Digital service	173,168
Analog loss	0
Digital gain	16,257
Net gain	16,257

TV Station KMVU • Analog Channel 26, DTV Channel 26 • Medford, OR

Approved Post-Transition Operation: Granted Construction Permit

Digital CP (solid): 16.2 kW ERP at 441 m HAAT, Network: Fox
 vs. Analog (dashed): 110 kW ERP at 440 m HAAT, Network: Fox

Market: Medford-Klamath Falls, OR



©2009 Hammett & Edison, Inc.

● Coverage gained after DTV transition
 No symbol = no change in coverage

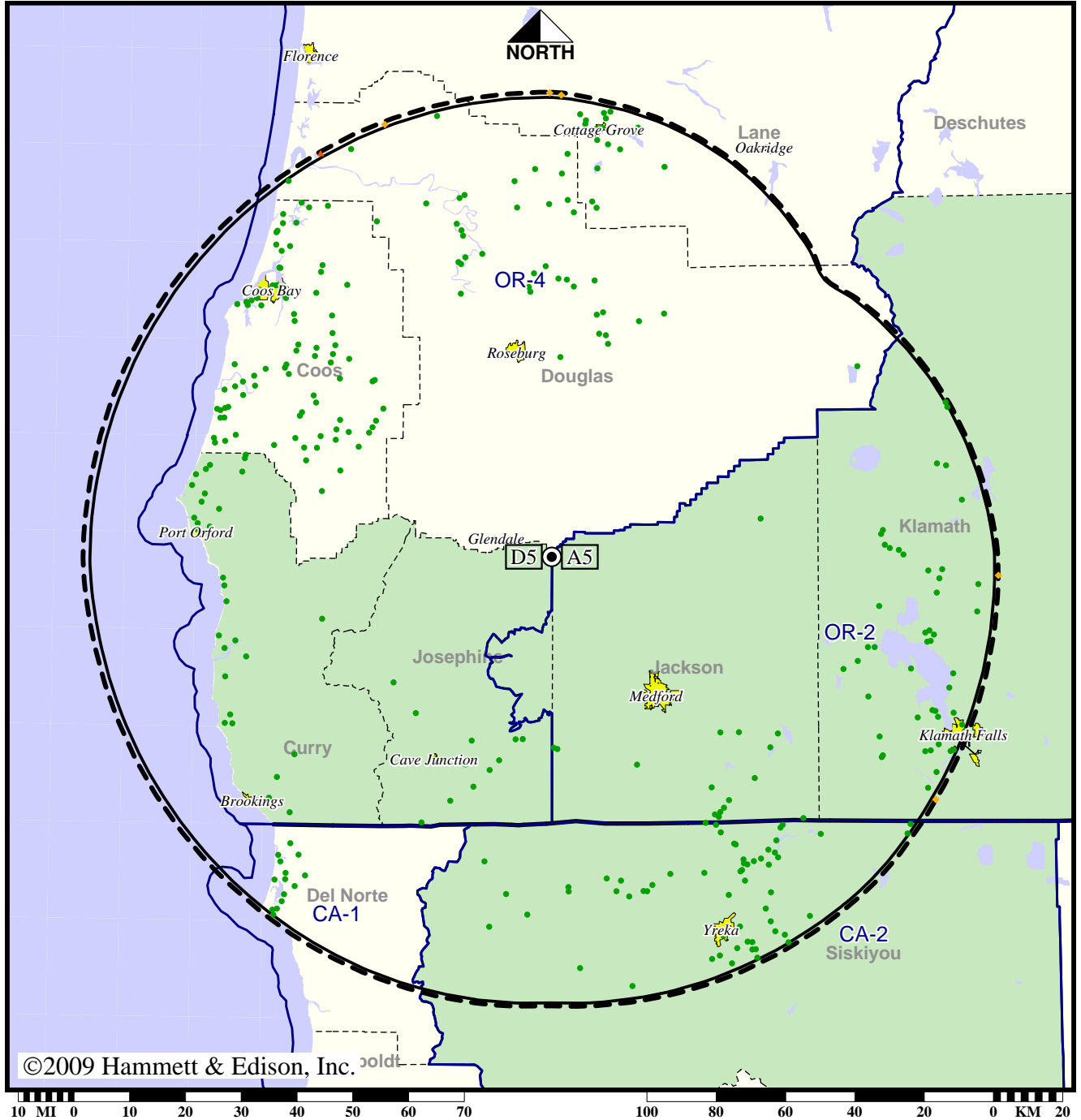
Analog service	156,911 persons
Digital service	173,168
Analog loss	0
Digital gain	16,257
Net gain	16,257

TV Station KOB1 • Analog Channel 5, DTV Channel 5 • Medford, OR

Expected Operation on June 13: Granted Construction Permit

Digital CP (solid): 5.40 kW ERP at 823 m HAAT, Network: NBC
 vs. Analog (dashed): 60.3 kW ERP at 823 m HAAT, Network: NBC

Market: Medford-Klamath Falls, OR



©2009 Hammett & Edison, Inc.

- Coverage gained after DTV transition
- No symbol = no change in coverage
- ◆ Coverage lost but still served by same network
- ▲ Coverage lost and no other service by same network

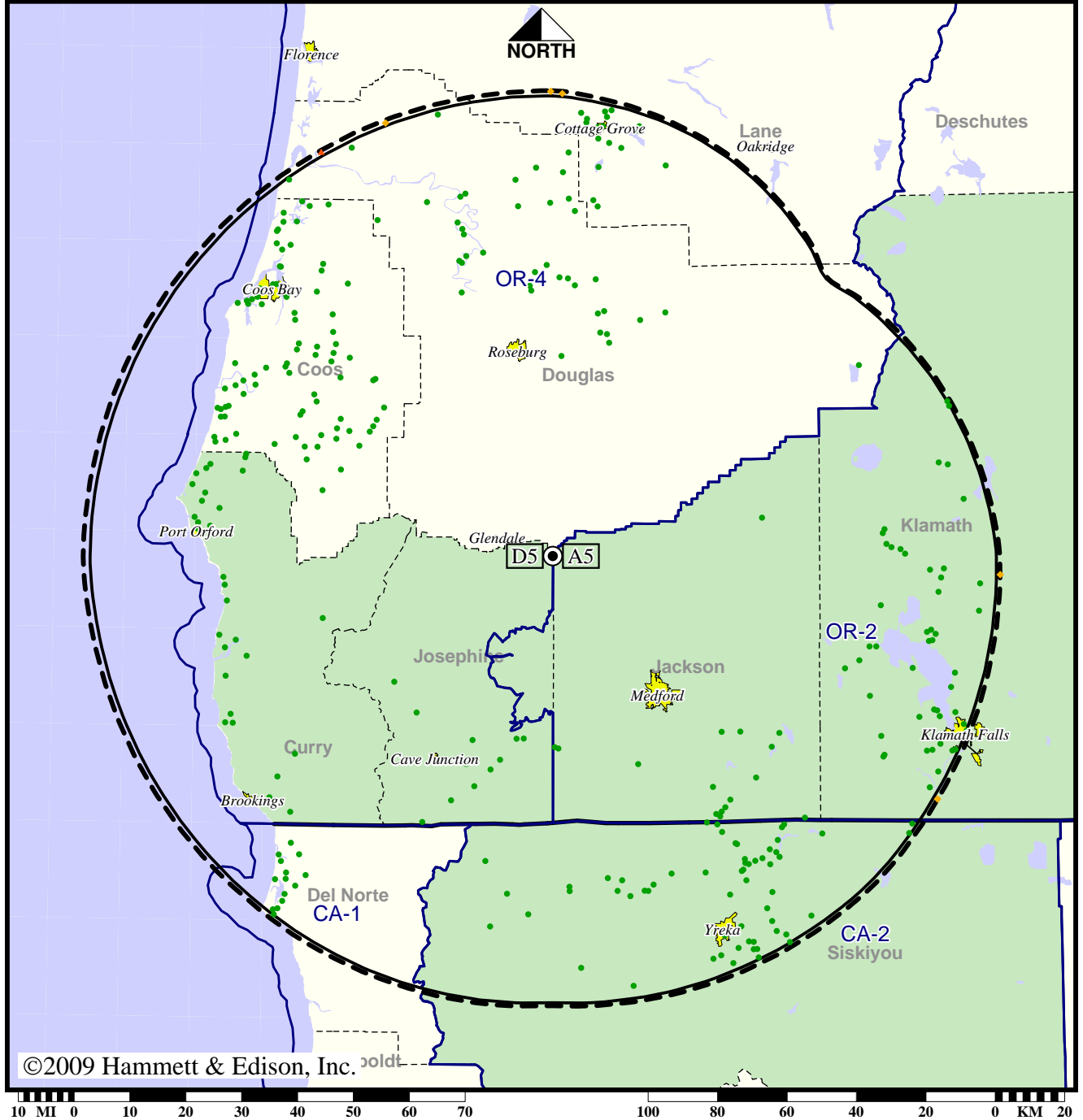
Analog service	394,094 persons
Digital service	444,713
Analog loss	108
Digital gain	50,727
Net gain	50,619

TV Station KOB1 • Analog Channel 5, DTV Channel 5 • Medford, OR

Approved Post-Transition Operation: Granted Construction Permit

Digital CP (solid): 5.40 kW ERP at 823 m HAAT, Network: NBC
 vs. Analog (dashed): 60.3 kW ERP at 823 m HAAT, Network: NBC

Market: Medford-Klamath Falls, OR



©2009 Hammett & Edison, Inc. sold

- Coverage gained after DTV transition
- No symbol = no change in coverage
- ◆ Coverage lost but still served by same network
- ▲ Coverage lost and no other service by same network

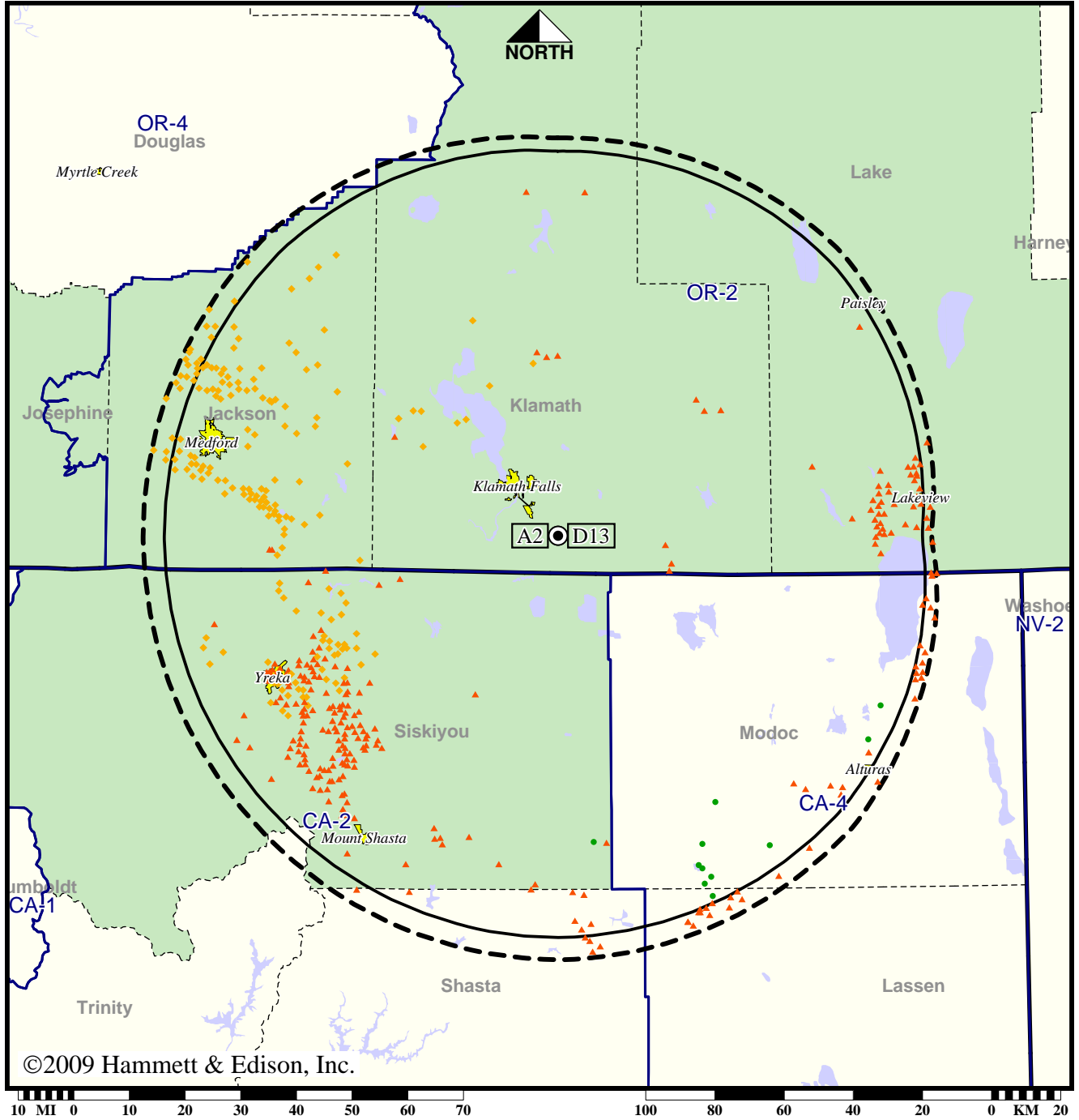
Analog service	394,094 persons
Digital service	444,713
Analog loss	108
Digital gain	50,727
Net gain	50,619

TV Station KOTI • Analog Channel 2, DTV Channel 13 • Klamath Falls, OR

Expected Operation on June 13: Licensed

Digital License (solid): 9.00 kW ERP at 659 m HAAT, Network: NBC
 vs. Analog (dashed): 35.5 kW ERP at 671 m HAAT, Network: NBC

Market: Medford-Klamath Falls, OR



©2009 Hammett & Edison, Inc.

- Coverage gained after DTV transition
- No symbol = no change in coverage
- ◆ Coverage lost but still served by same network
- ▲ Coverage lost and no other service by same network

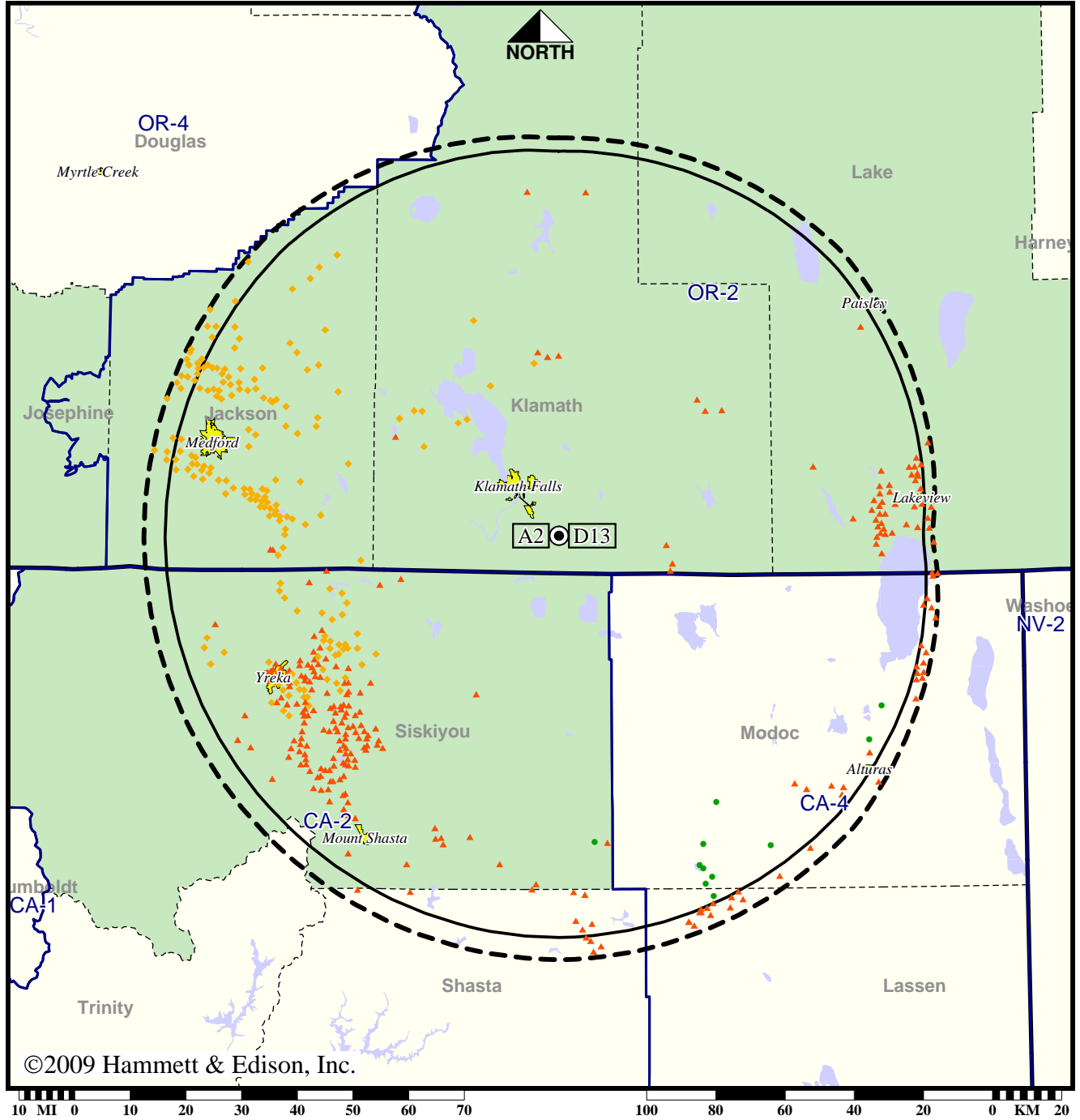
Analog service	121,244 persons
Digital service	69,621
Analog loss	51,734
Digital gain	111
Net gain	-51,623

TV Station KOTI • Analog Channel 2, DTV Channel 13 • Klamath Falls, OR

Approved Post-Transition Operation: Licensed

Digital License (solid): 9.00 kW ERP at 659 m HAAT, Network: NBC
 vs. Analog (dashed): 35.5 kW ERP at 671 m HAAT, Network: NBC

Market: Medford-Klamath Falls, OR



©2009 Hammett & Edison, Inc.

- Coverage gained after DTV transition
- No symbol = no change in coverage
- ◆ Coverage lost but still served by same network
- ▲ Coverage lost and no other service by same network

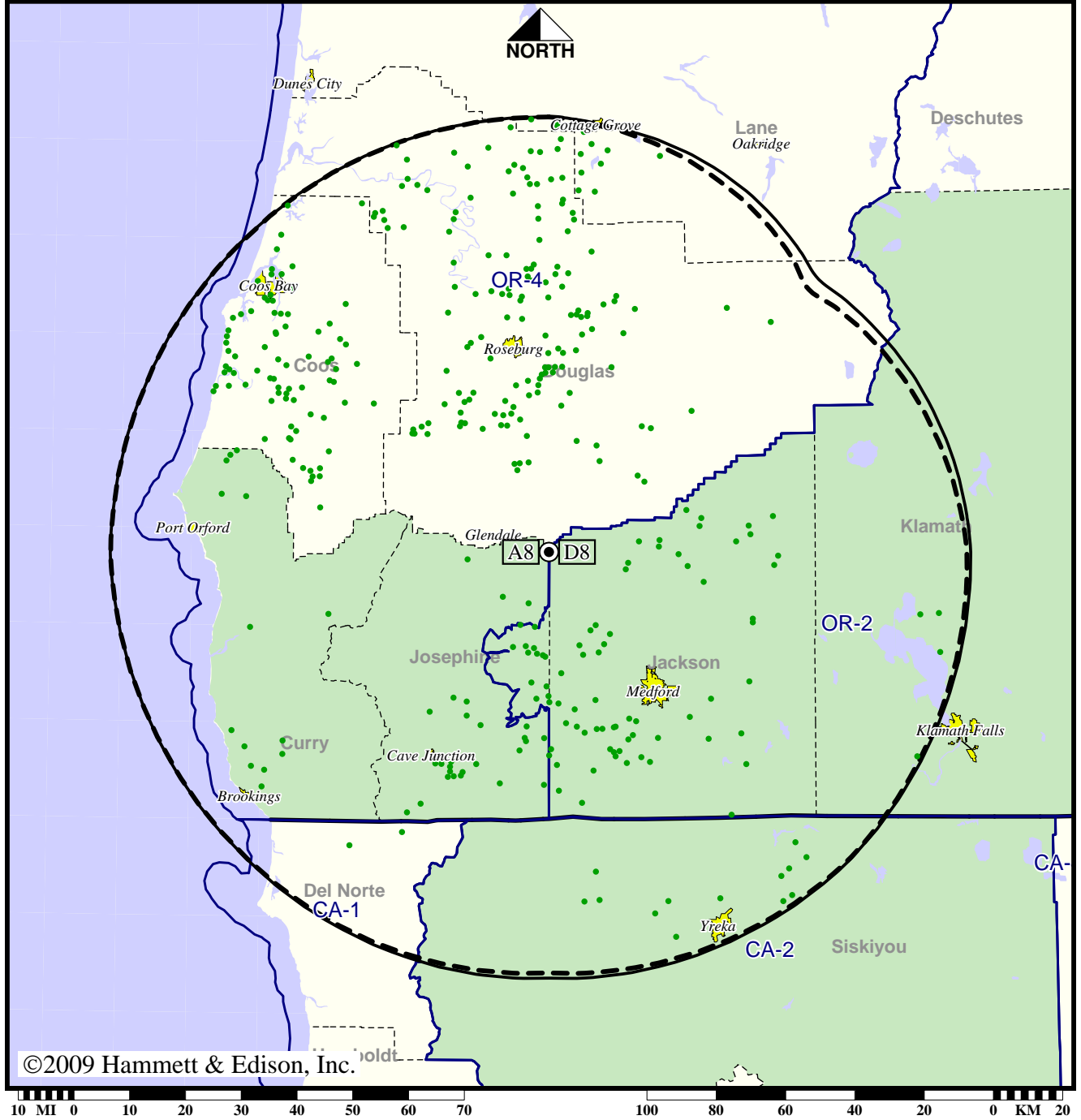
Analog service	121,244 persons
Digital service	69,621
Analog loss	51,734
Digital gain	111
Net gain	-51,623

TV Station KSYS • Analog Channel 8, DTV Channel 8 • Medford, OR

Expected Operation on June 13: Granted Construction Permit

Digital CP (solid): 16.9 kW ERP at 818 m HAAT, Network: PBS
vs. Analog (dashed): 191 kW ERP at 818 m HAAT, Network: PBS

Market: Medford-Klamath Falls, OR



©2009 Hammett & Edison, Inc.

● Coverage gained after DTV transition
 No symbol = no change in coverage

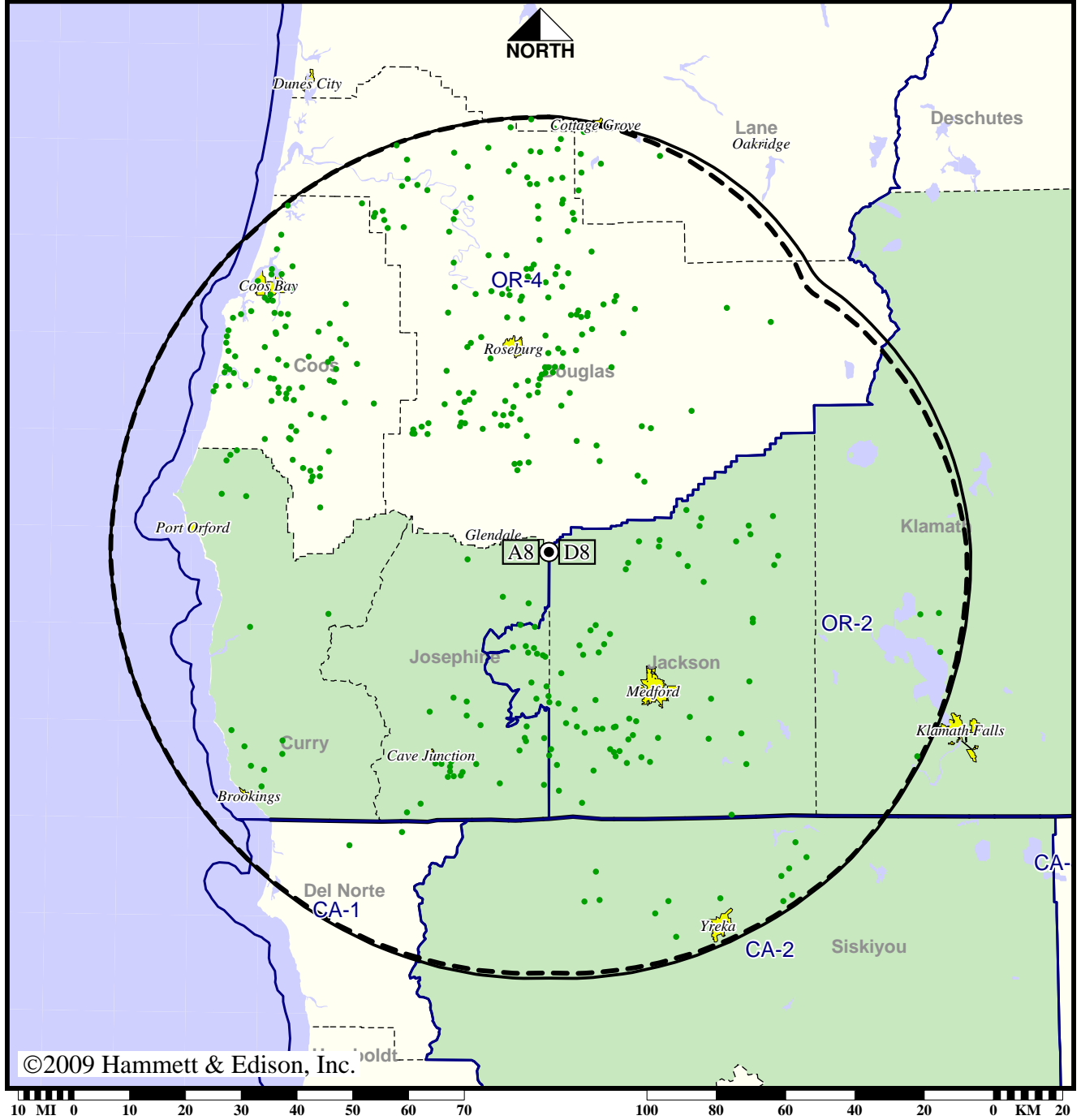
Analog service	311,823 persons
Digital service	358,956
Analog loss	0
Digital gain	47,133
Net gain	47,133

TV Station KSYS • Analog Channel 8, DTV Channel 8 • Medford, OR

Approved Post-Transition Operation: Granted Construction Permit

Digital CP (solid): 16.9 kW ERP at 818 m HAAT, Network: PBS
 vs. Analog (dashed): 191 kW ERP at 818 m HAAT, Network: PBS

Market: Medford-Klamath Falls, OR



©2009 Hammett & Edison, Inc.

● Coverage gained after DTV transition
 No symbol = no change in coverage

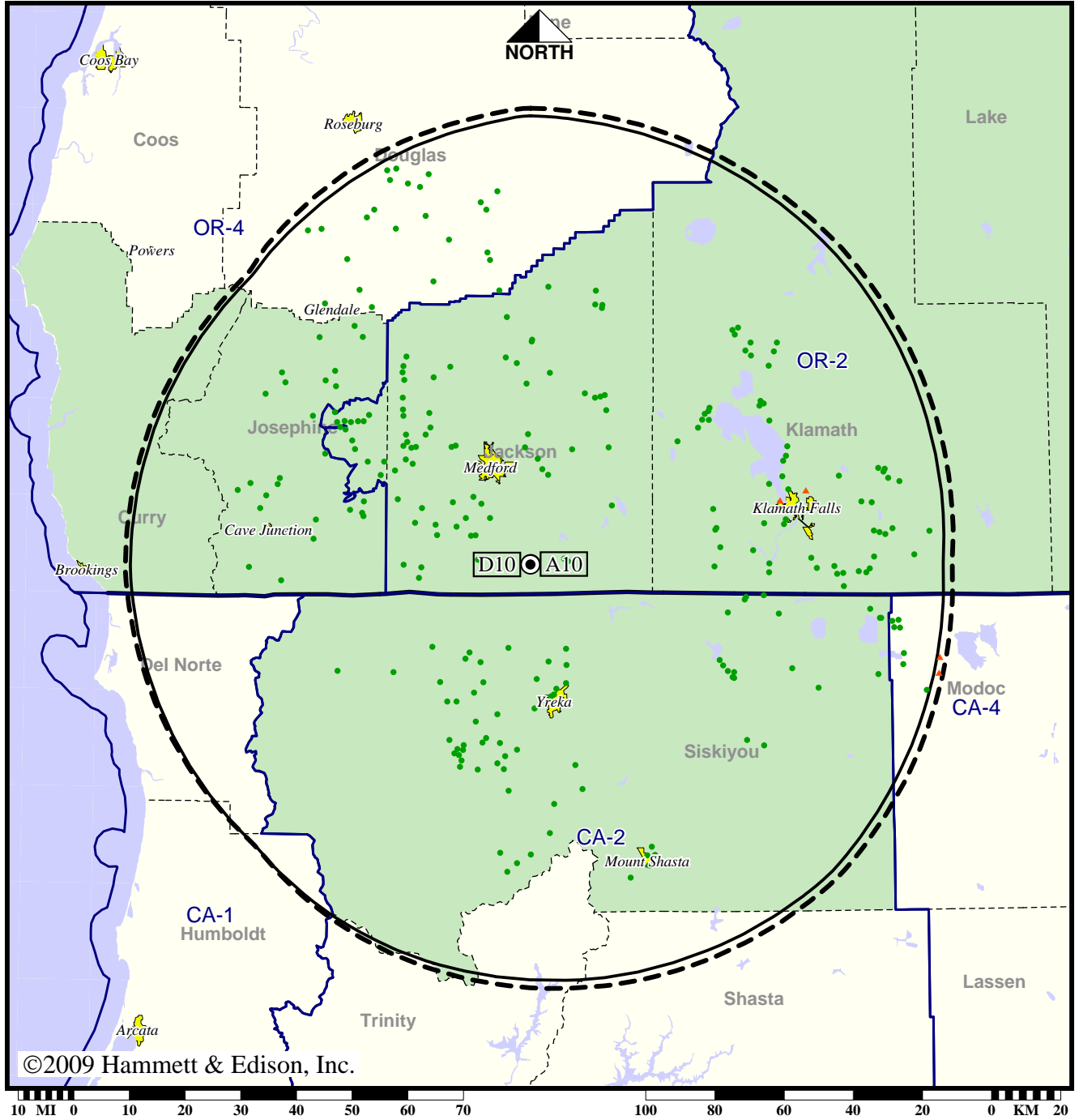
Analog service	311,823 persons
Digital service	358,453
Analog loss	0
Digital gain	46,630
Net gain	46,630

TV Station KTVL • Analog Channel 10, DTV Channel 10 • Medford, OR

Expected Operation on June 13: Granted Construction Permit

Digital CP (solid): 9.00 kW ERP at 1001 m HAAT, Network: CBS
vs. Analog (dashed): 132 kW ERP at 1009 m HAAT, Network: CBS

Market: Medford-Klamath Falls, OR



©2009 Hammett & Edison, Inc.

- Coverage gained after DTV transition
- No symbol = no change in coverage
- ▲ Coverage lost after DTV transition

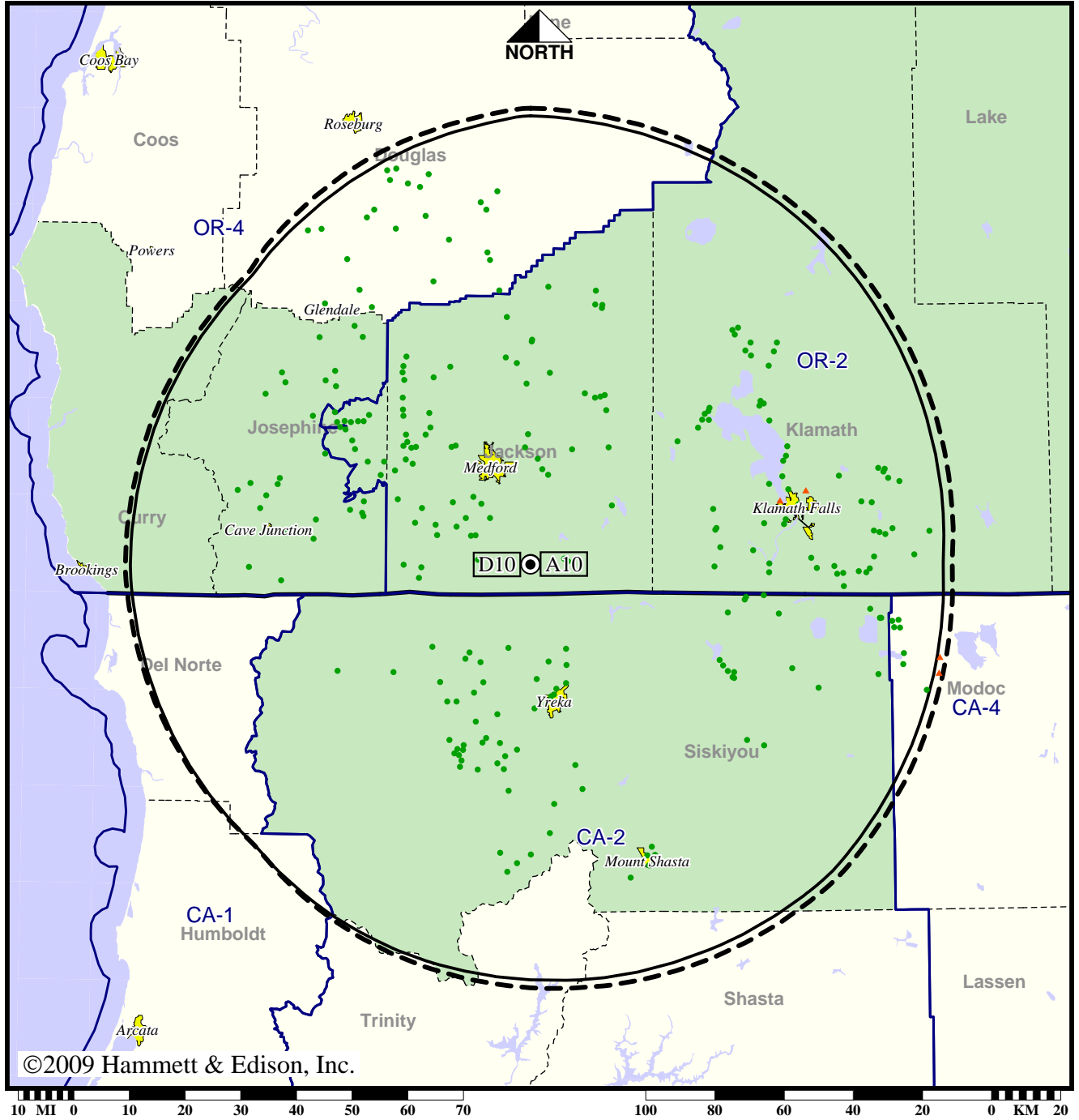
Analog service	272,619 persons
Digital service	300,181
Analog loss	129
Digital gain	27,691
Net gain	27,562

TV Station KTVL • Analog Channel 10, DTV Channel 10 • Medford, OR

Approved Post-Transition Operation: Granted Construction Permit

**Digital CP (solid): 9.00 kW ERP at 1001 m HAAT, Network: CBS
vs. Analog (dashed): 132 kW ERP at 1009 m HAAT, Network: CBS**

Market: Medford-Klamath Falls, OR



©2009 Hammett & Edison, Inc.

- Coverage gained after DTV transition
- No symbol = no change in coverage
- ▲ Coverage lost after DTV transition

Analog service	272,619 persons
Digital service	300,181
Analog loss	129
Digital gain	27,691
Net gain	27,562