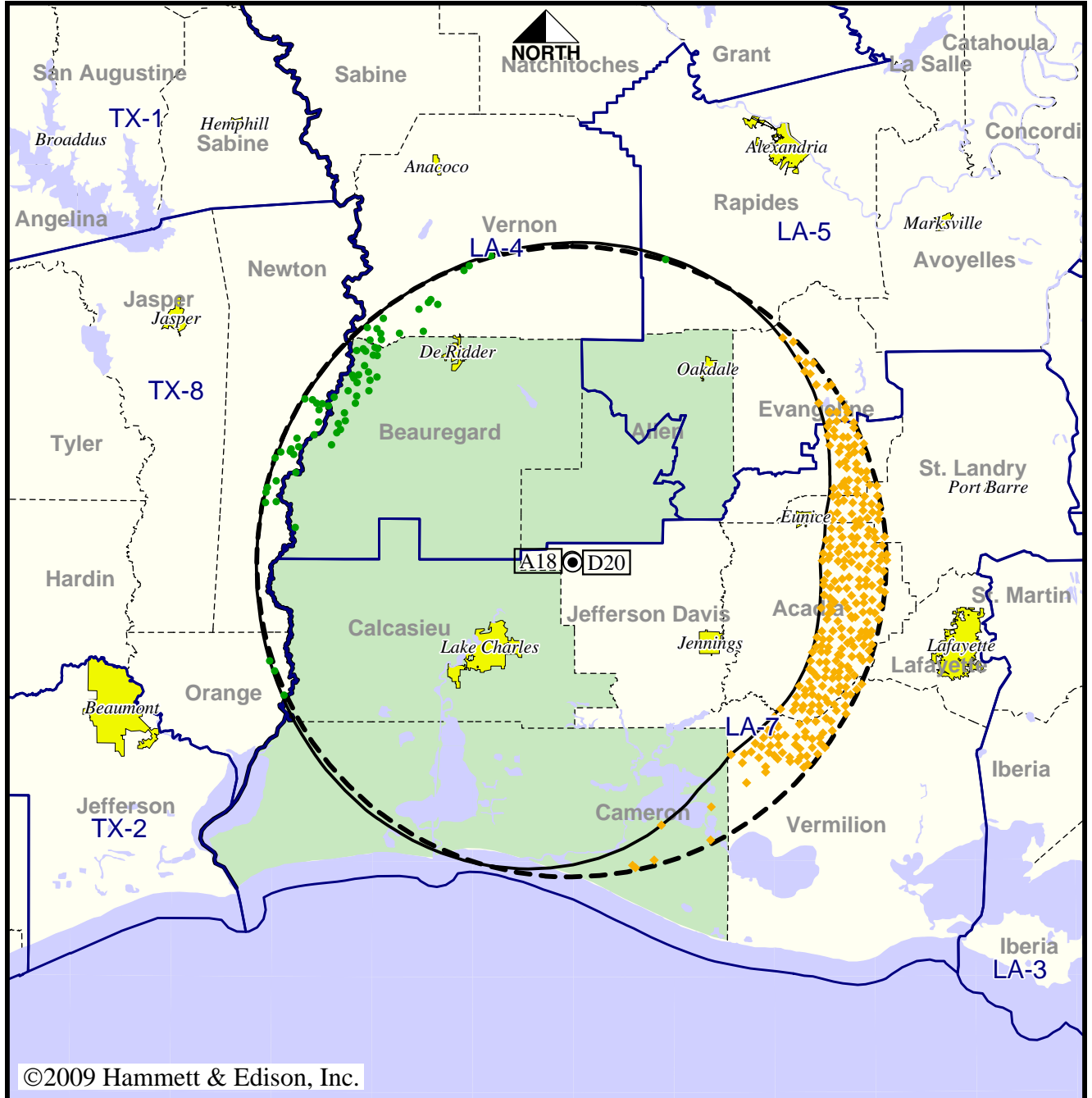


Station KLTL-TV • Analog Channel 18, DTV Channel 20 • Lake Charles, LA

Expected Operation on June 13: Licensed

Digital License (solid): 55.0 kW ERP at 299 m HAAT, Network: PBS
 vs. Analog (dashed): 1260 kW ERP at 314 m HAAT, Network: PBS

Market: Lake Charles, LA



©2009 Hammett & Edison, Inc.

10 MI 0 10 20 30 40 50 60 40 20 0 KM 20

- Coverage gained after DTV transition
- No symbol = no change in coverage
- ◆ Coverage lost but still served by same network

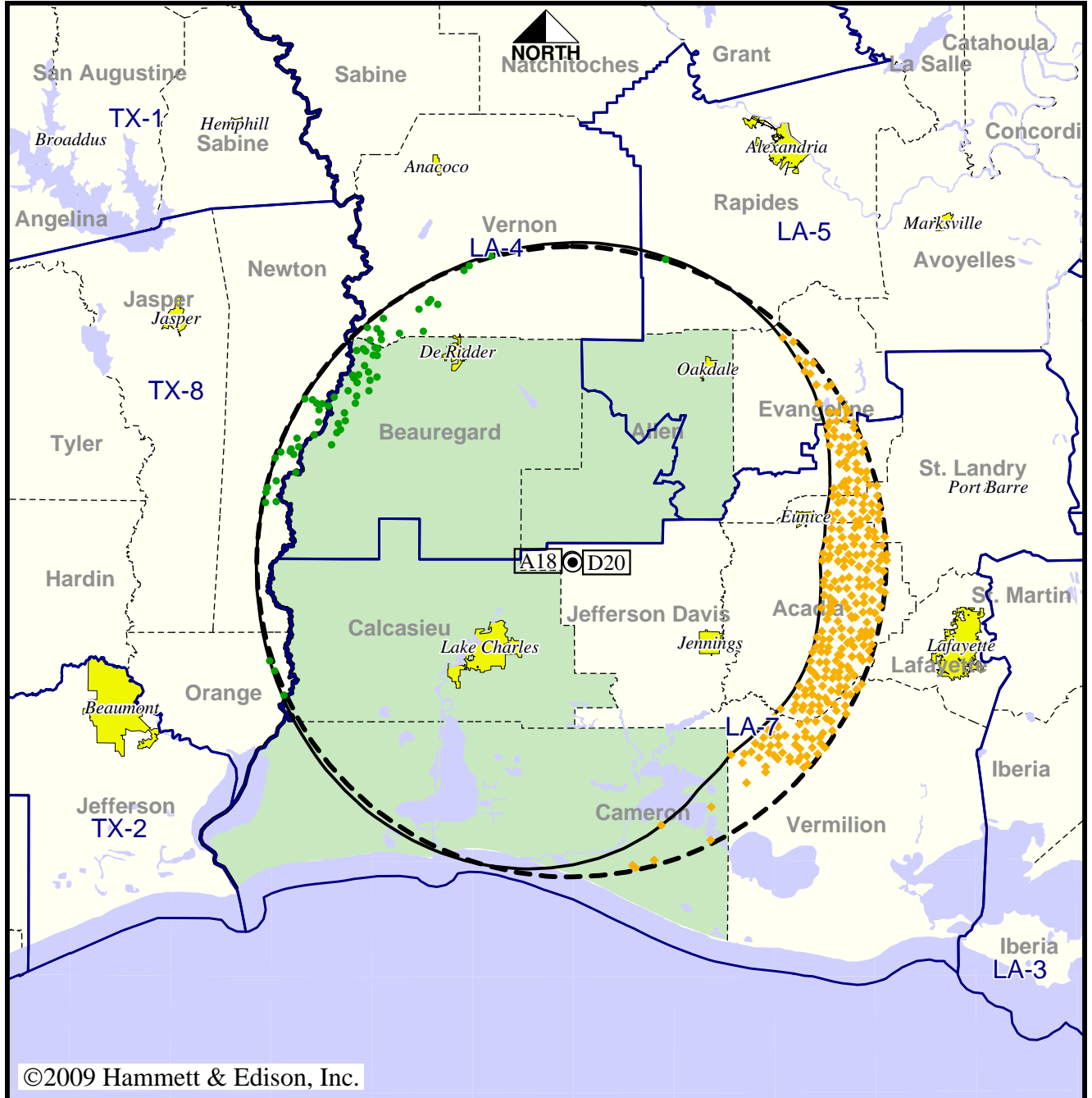
Analog service	396,502 persons
Digital service	351,111
Analog loss	51,528
Digital gain	6,137
Net gain	-45,391

Station KLTL-TV • Analog Channel 18, DTV Channel 20 • Lake Charles, LA

Approved Post-Transition Operation: Licensed

Digital License (solid): 55.0 kW ERP at 299 m HAAT, Network: PBS
 vs. Analog (dashed): 1260 kW ERP at 314 m HAAT, Network: PBS

Market: Lake Charles, LA



©2009 Hammett & Edison, Inc.

- Coverage gained after DTV transition
- No symbol = no change in coverage
- ◆ Coverage lost but still served by same network

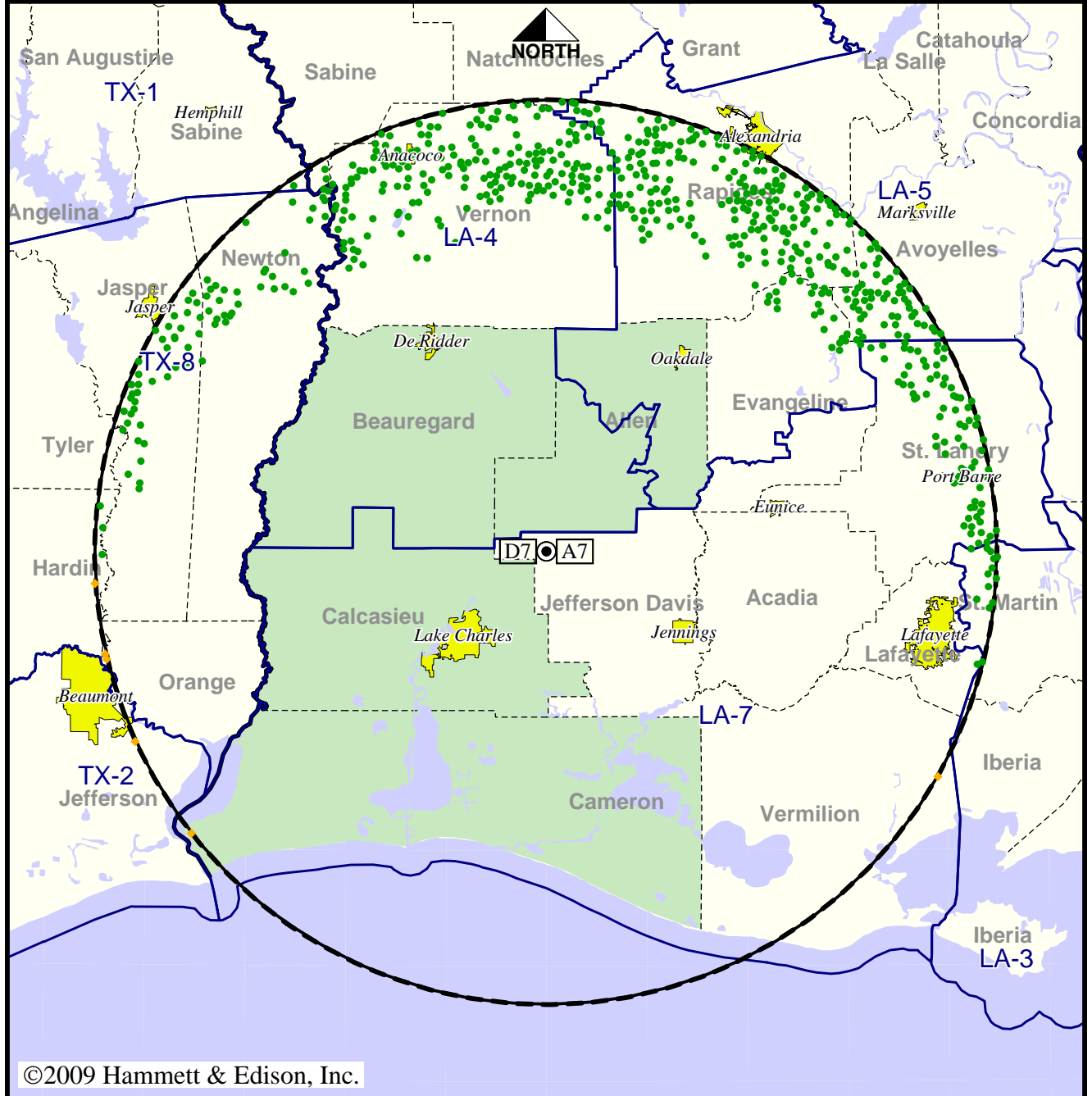
Analog service	396,502 persons
Digital service	351,095
Analog loss	51,528
Digital gain	6,121
Net gain	-45,407

TV Station KPLC • Analog Channel 7, DTV Channel 7 • Lake Charles, LA

Expected Operation on June 13: Granted Construction Permit

Digital CP (solid): 17.8 kW ERP at 451 m HAAT, Network: NBC
 vs. Analog (dashed): 316 kW ERP at 451 m HAAT, Network: NBC

Market: Lake Charles, LA



©2009 Hammett & Edison, Inc.



- Coverage gained after DTV transition
- No symbol = no change in coverage
- ◆ Coverage lost but still served by same network

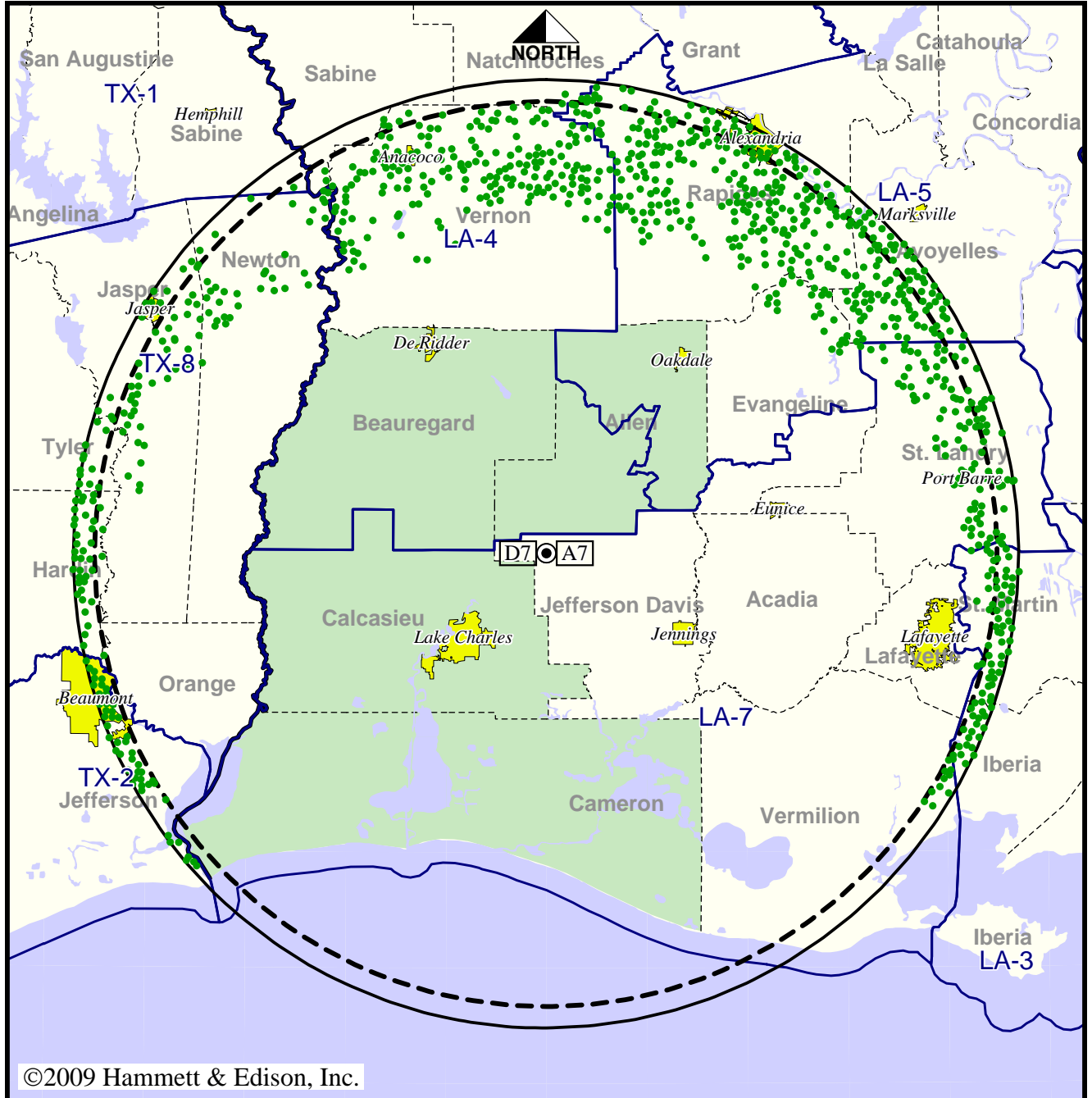
Analog service	963,461 persons
Digital service	1,024,372
Analog loss	1,092
Digital gain	62,003
Net gain	60,911

TV Station KPLC • Analog Channel 7, DTV Channel 7 • Lake Charles, LA

Approved Post-Transition Operation: Granted Construction Permit

Digital CP (solid): 31.0 kW ERP at 451 m HAAT, Network: NBC
 vs. Analog (dashed): 316 kW ERP at 451 m HAAT, Network: NBC

Market: Lake Charles, LA



©2009 Hammett & Edison, Inc.

10 MI 0 10 20 30 40 50 60 40 20 0 KM 20

- Coverage gained after DTV transition
- No symbol = no change in coverage

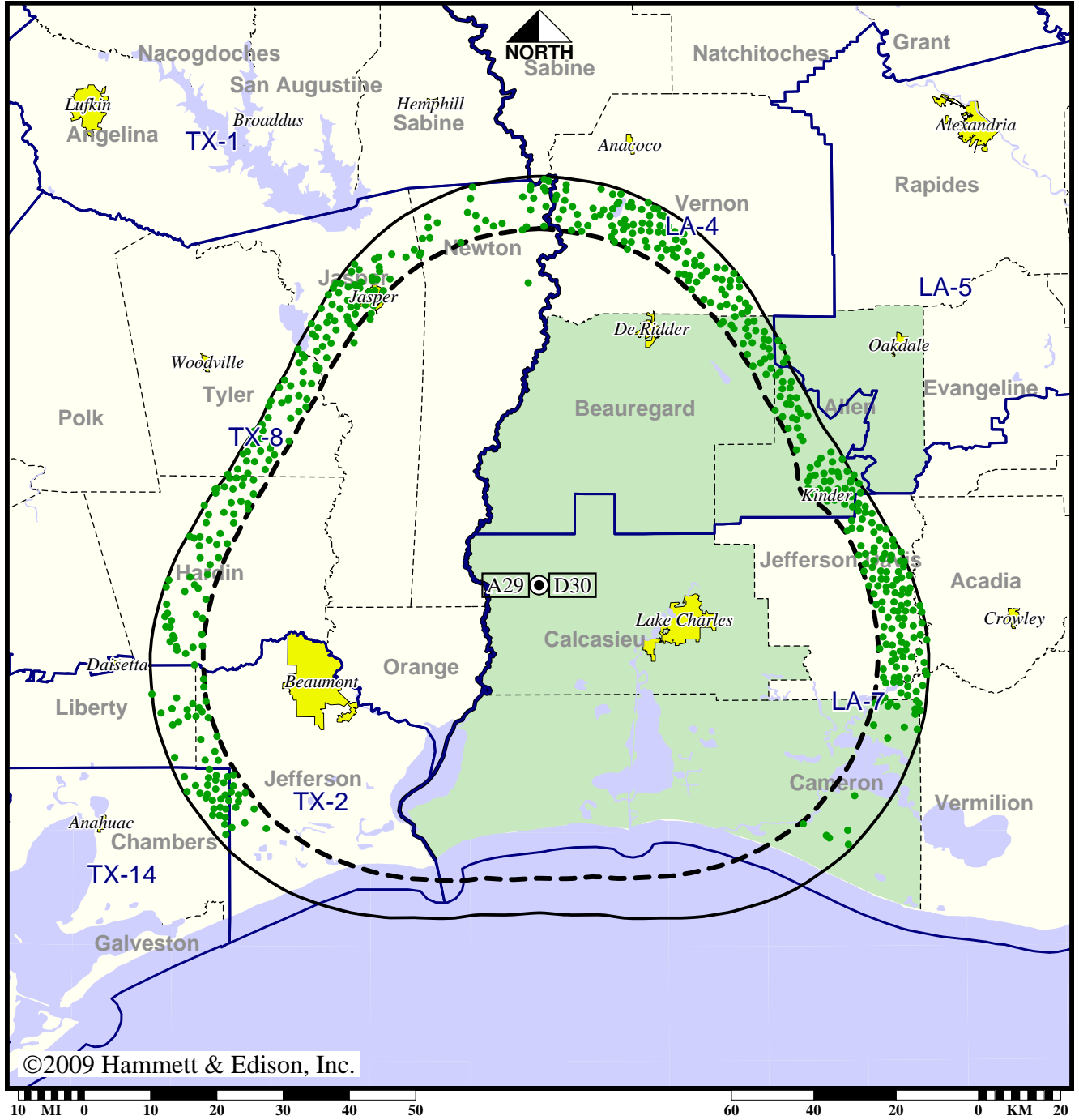
Analog service	963,461 persons
Digital service	1,182,694
Analog loss	0
Digital gain	219,233
Net gain	219,233

TV Station KVHP • Analog Channel 29, DTV Channel 30 • Lake Charles, LA

Expected Operation on June 13: Granted Construction Permit

**Digital CP (solid): 1000 kW ERP at 315 m HAAT, Network: Fox
vs. Analog (dashed): 2510 kW ERP at 394 m HAAT, Network: Fox**

Market: Lake Charles, LA



©2009 Hammett & Edison, Inc.

● Coverage gained after DTV transition
No symbol = no change in coverage

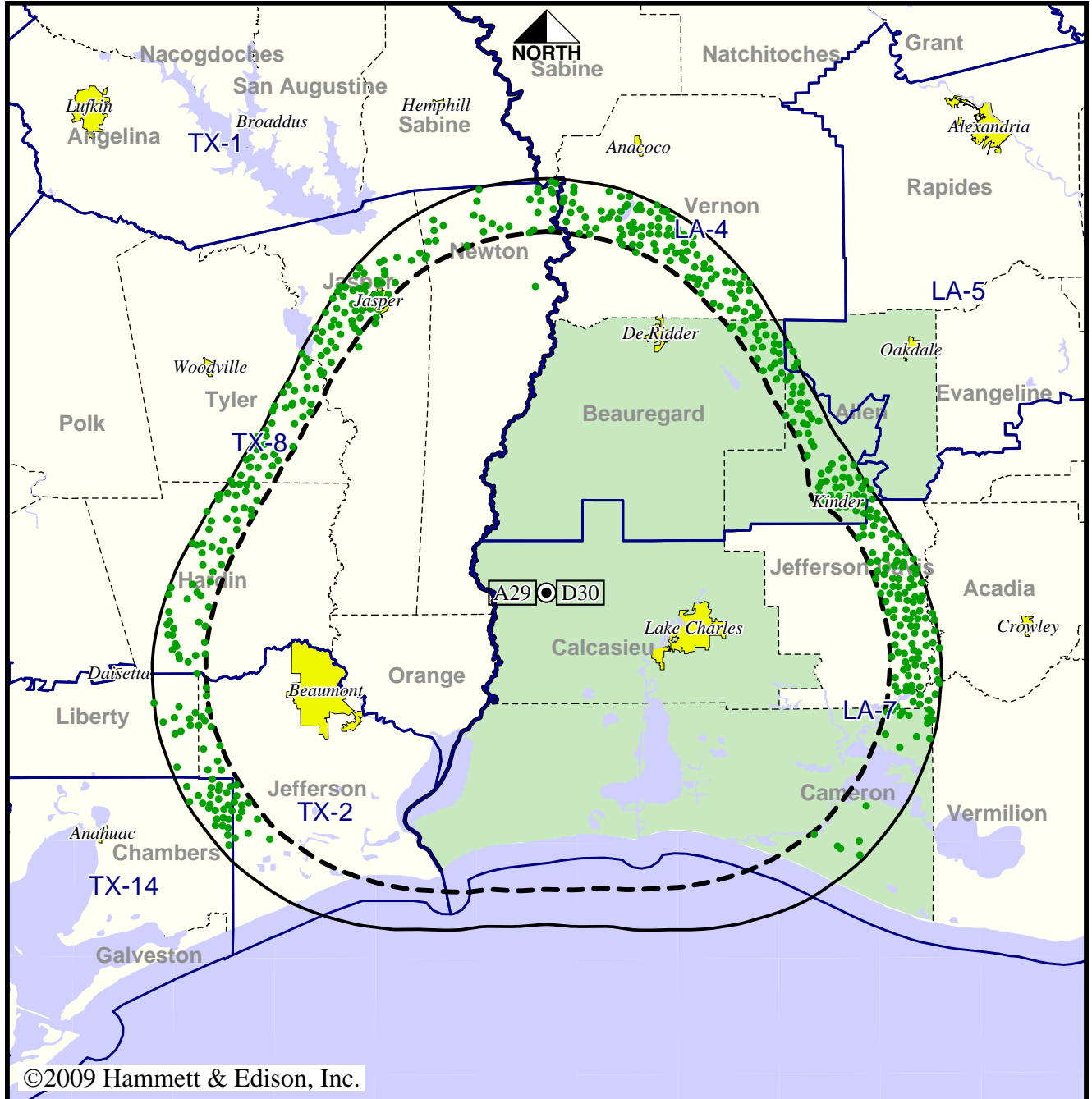
Analog service	658,056 persons
Digital service	730,038
Analog loss	0
Digital gain	71,982
Net gain	71,982

TV Station KVHP • Analog Channel 29, DTV Channel 30 • Lake Charles, LA

Approved Post-Transition Operation: Granted Construction Permit

Digital CP (solid): 1000 kW ERP at 315 m HAAT, Network: Fox
 vs. Analog (dashed): 2510 kW ERP at 394 m HAAT, Network: Fox

Market: Lake Charles, LA



©2009 Hammett & Edison, Inc.

10 MI 0 10 20 30 40 50 60 40 20 0 KM 20

- Coverage gained after DTV transition
- No symbol = no change in coverage

Analog service	658,056 persons
Digital service	730,038
Analog loss	0
Digital gain	71,982
Net gain	71,982