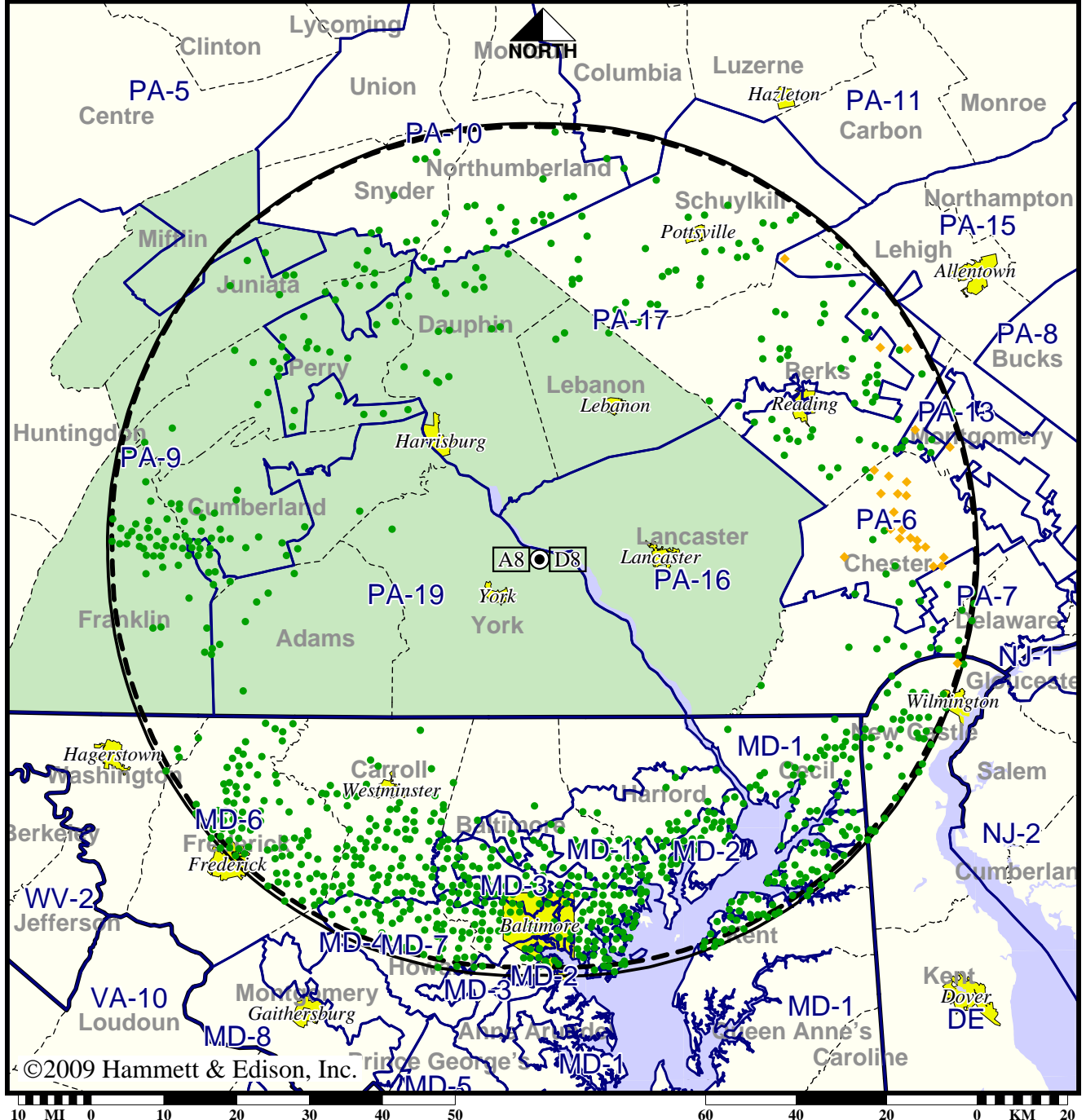


TV Station WGAL • Analog Channel 8, DTV Channel 8 • Lancaster, PA

Expected Operation on June 13: Granted Construction Permit

Digital CP (solid): 5.40 kW ERP at 419 m HAAT, Network: NBC
 vs. Analog (dashed): 110 kW ERP at 419 m HAAT, Network: NBC

Market: Harrisburg-Lancaster-Lebanon-York, PA



- Coverage gained after DTV transition
- No symbol = no change in coverage
- ◆ Coverage lost but still served by same network

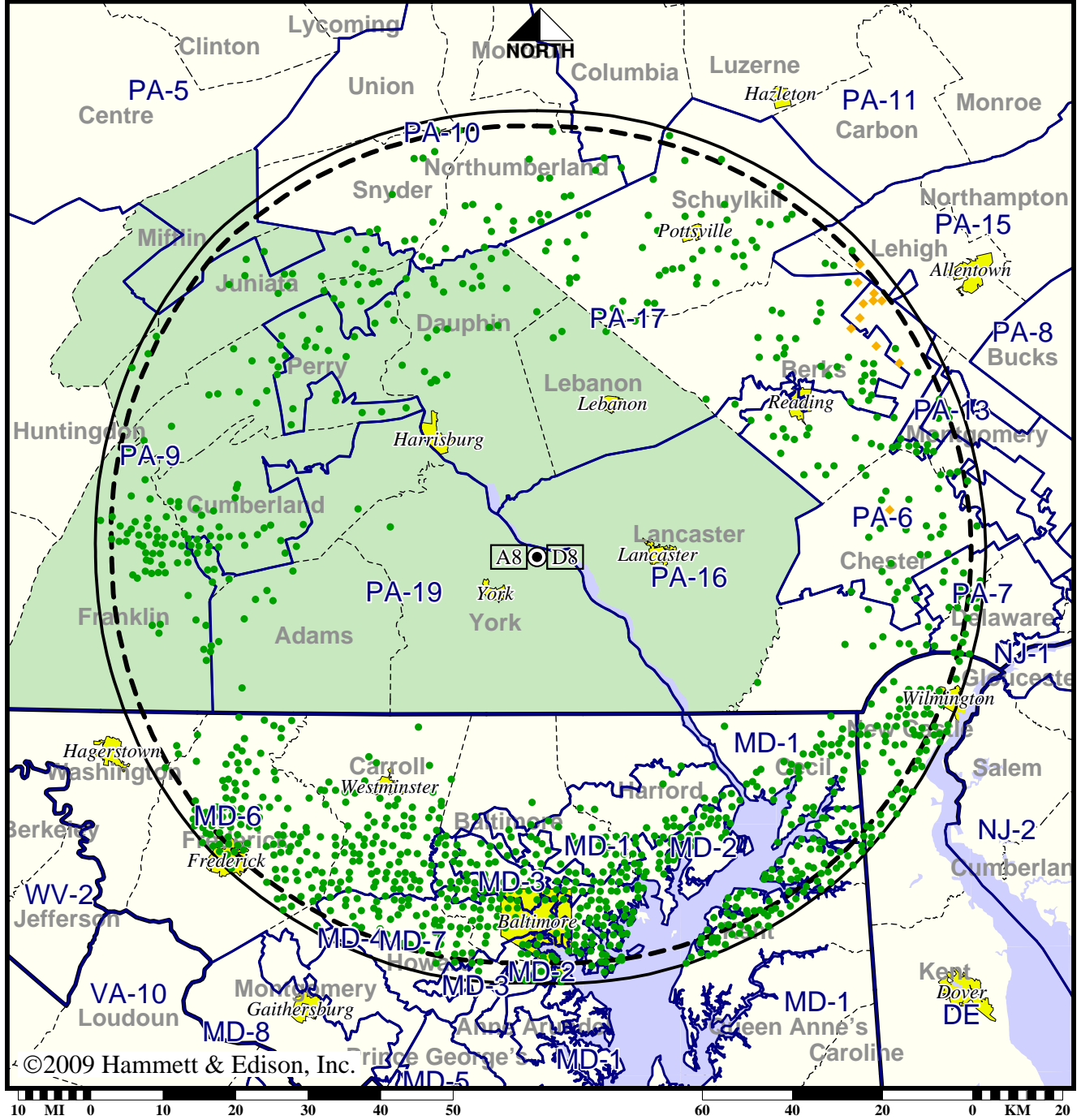
Analog service	2,681,959 persons
Digital service	3,960,790
Analog loss	21,175
Digital gain	1,300,006
Net gain	1,278,831

TV Station WGAL • Analog Channel 8, DTV Channel 8 • Lancaster, PA

Approved Post-Transition Operation: Granted Construction Permit

Digital CP (solid): 7.50 kW ERP at 419 m HAAT, Network: NBC
 vs. Analog (dashed): 110 kW ERP at 419 m HAAT, Network: NBC

Market: Harrisburg-Lancaster-Lebanon-York, PA



- Coverage gained after DTV transition
- No symbol = no change in coverage
- ◆ Coverage lost but still served by same network

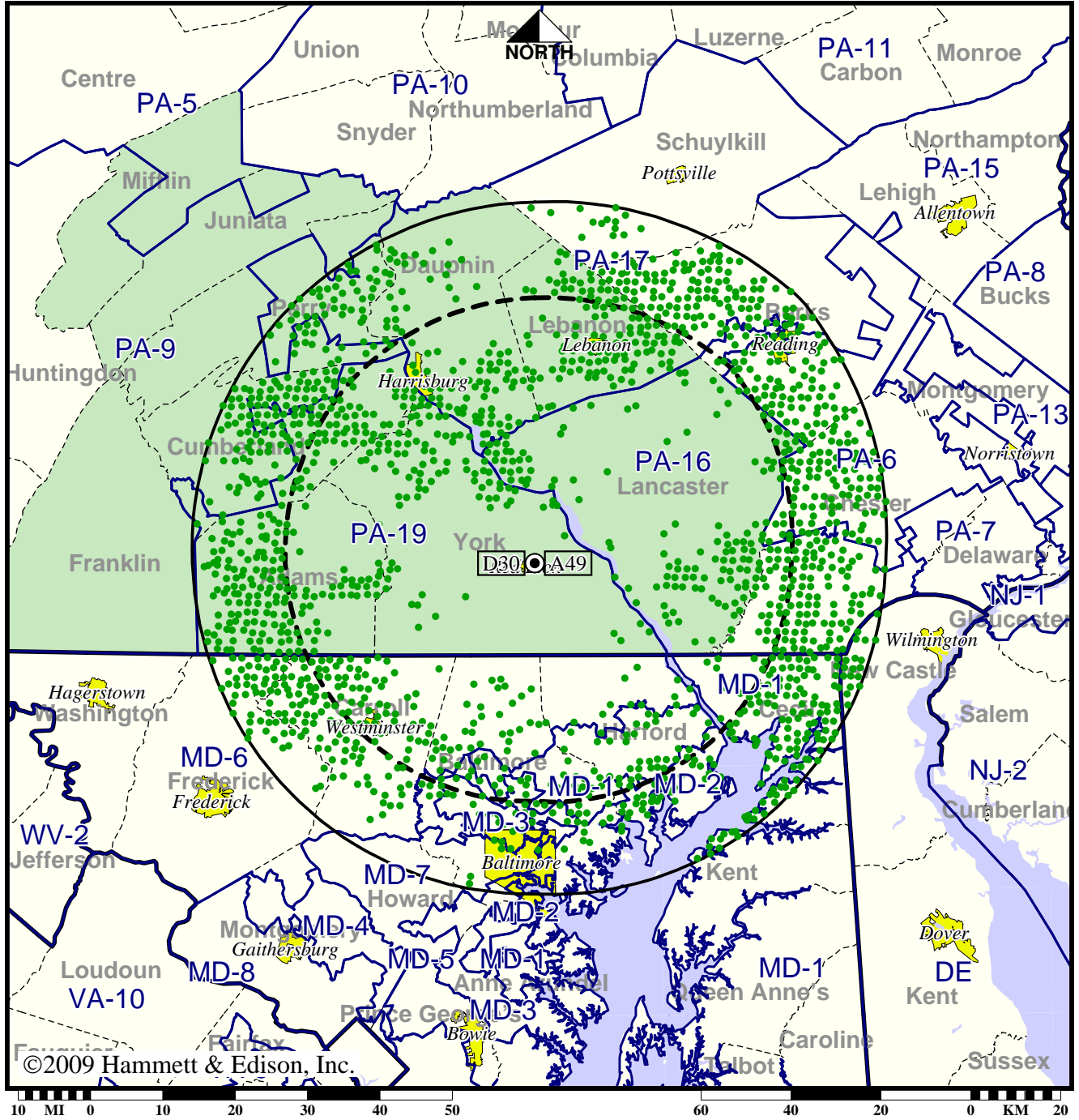
Analog service	2,681,959 persons
Digital service	4,233,103
Analog loss	2,786
Digital gain	1,553,930
Net gain	1,551,144

Station WGCB-TV • Analog Channel 49, DTV Channel 30 • Red Lion, PA

Expected Operation on June 13: Licensed

Digital License (solid): 500 kW ERP at 174 m HAAT
 vs. Analog (dashed): 646 kW ERP at 177 m HAAT

Market: Harrisburg-Lancaster-Lebanon-York, PA



● Coverage gained after DTV transition
 No symbol = no change in coverage

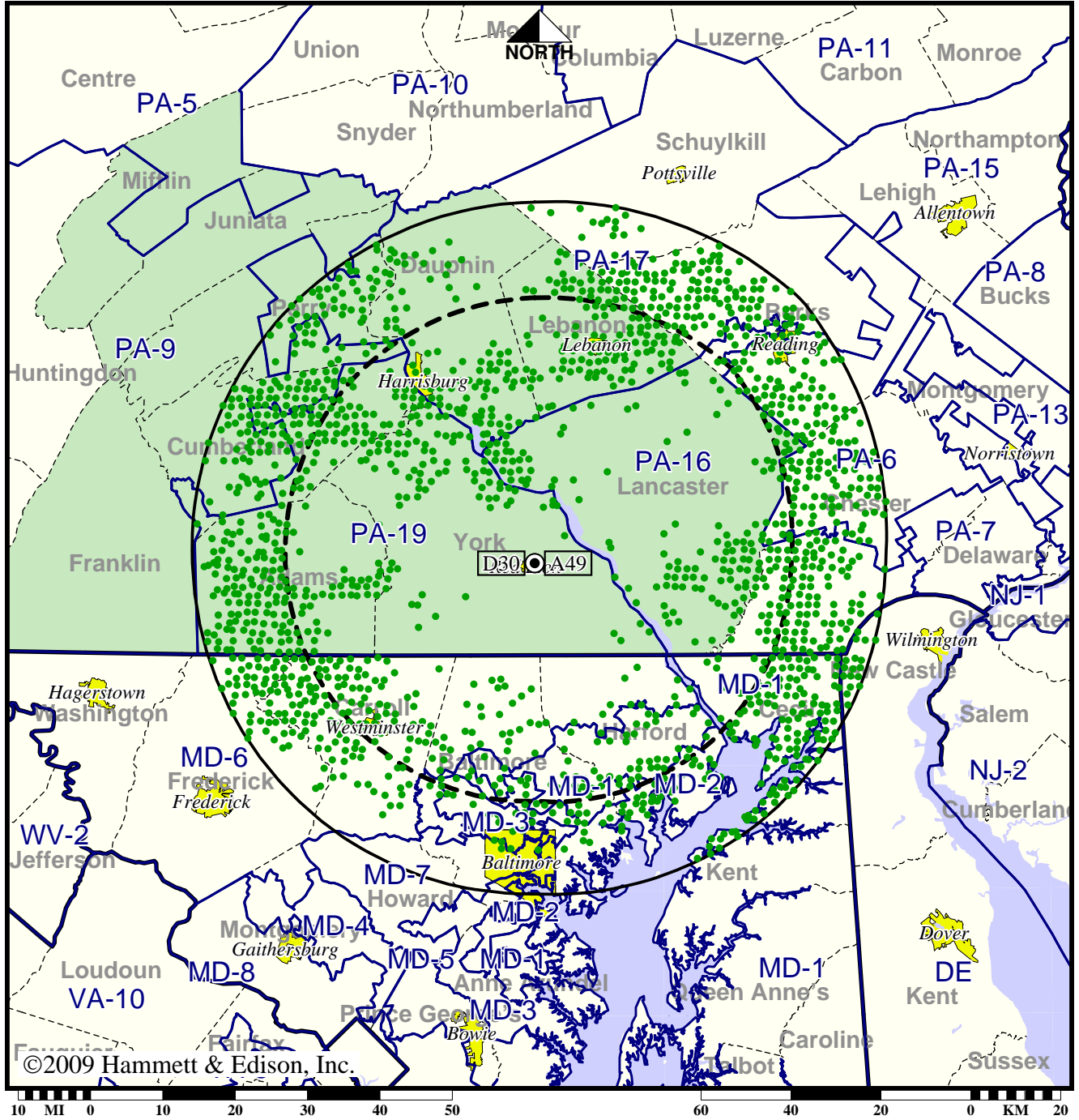
Analog service	1,205,323 persons
Digital service	2,514,318
Analog loss	0
Digital gain	1,308,995
Net gain	1,308,995

Station WGCB-TV • Analog Channel 49, DTV Channel 30 • Red Lion, PA

Approved Post-Transition Operation: Licensed

Digital License (solid): 500 kW ERP at 174 m HAAT
 vs. Analog (dashed): 646 kW ERP at 177 m HAAT

Market: Harrisburg-Lancaster-Lebanon-York, PA



- Coverage gained after DTV transition
- No symbol = no change in coverage

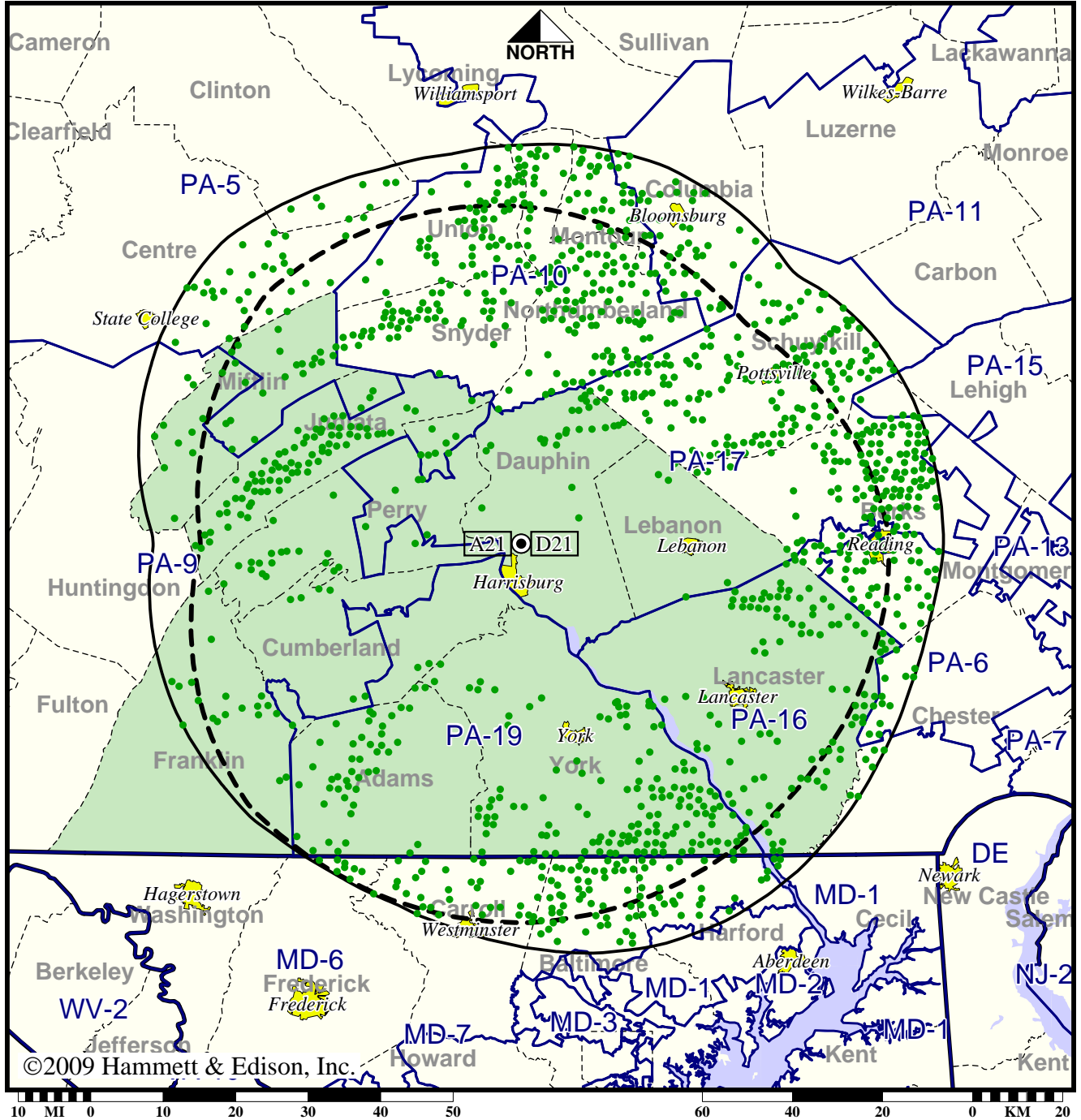
Analog service	1,205,323 persons
Digital service	2,462,920
Analog loss	0
Digital gain	1,257,597
Net gain	1,257,597

Station WHP-TV • Analog Channel 21, DTV Channel 21 • Harrisburg, PA

Expected Operation on June 13: Granted Construction Permit

Digital CP (solid): 450 kW ERP at 369 m HAAT, Network: CBS
 vs. Analog (dashed): 1200 kW ERP at 372 m HAAT, Network: CBS

Market: Harrisburg-Lancaster-Lebanon-York, PA



● Coverage gained after DTV transition
 No symbol = no change in coverage

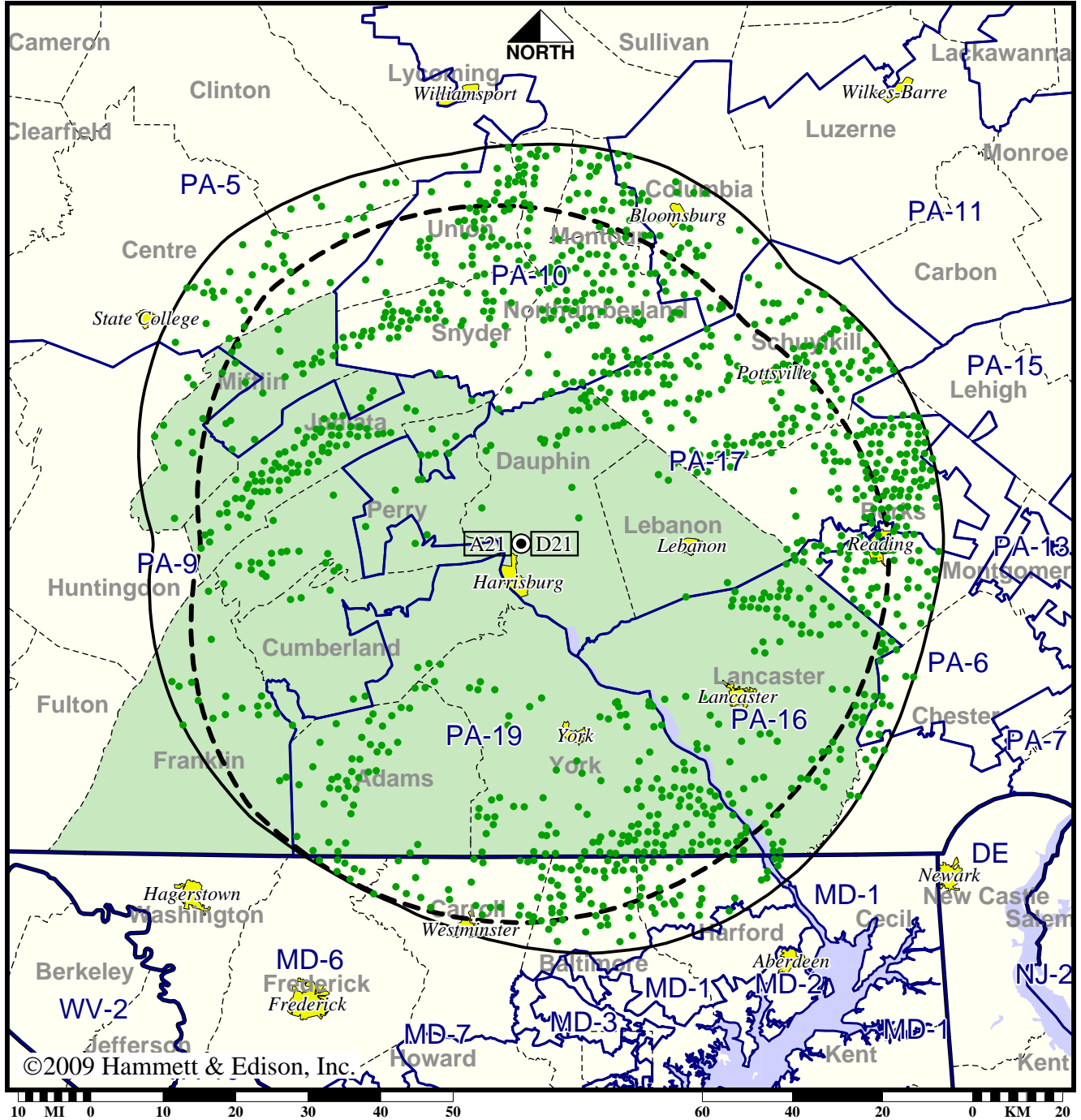
Analog service	1,581,404 persons
Digital service	2,111,934
Analog loss	0
Digital gain	530,530
Net gain	530,530

Station WHP-TV • Analog Channel 21, DTV Channel 21 • Harrisburg, PA

Approved Post-Transition Operation: Granted Construction Permit

Digital CP (solid): 450 kW ERP at 369 m HAAT, Network: CBS
 vs. Analog (dashed): 1200 kW ERP at 372 m HAAT, Network: CBS

Market: Harrisburg-Lancaster-Lebanon-York, PA



● Coverage gained after DTV transition
 No symbol = no change in coverage

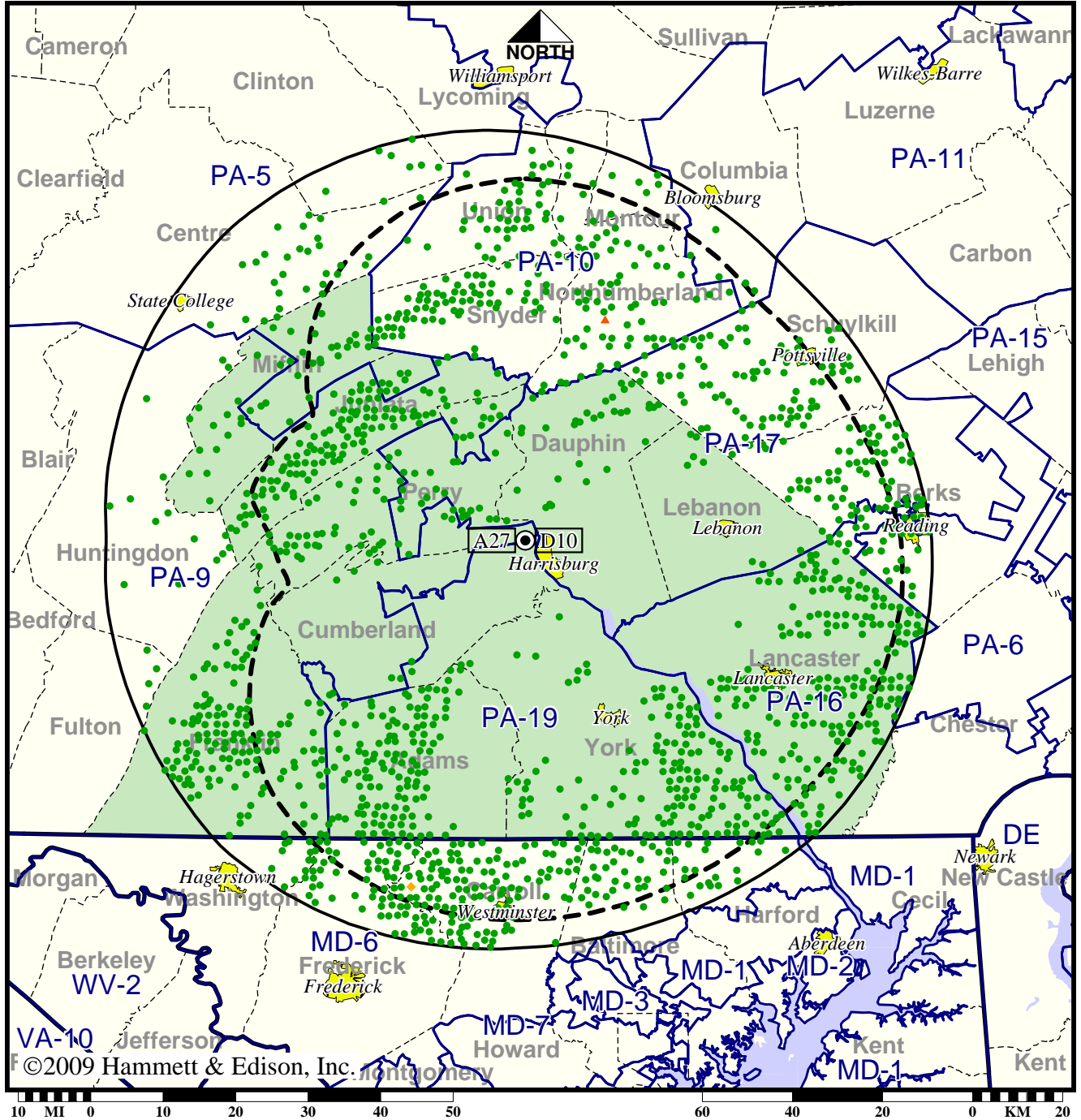
Analog service	1,581,404 persons
Digital service	2,093,316
Analog loss	0
Digital gain	511,912
Net gain	511,912

Station WHTM-TV • Analog Channel 27, DTV Channel 10 • Harrisburg, PA

Expected Operation on June 13: Licensed

Digital License (solid): 16.2 kW ERP at 311 m HAAT, Network: ABC
 vs. Analog (dashed): 2140 kW ERP at 346 m HAAT, Network: ABC

Market: Harrisburg-Lancaster-Lebanon-York, PA



- Coverage gained after DTV transition
- No symbol = no change in coverage
- ◆ Coverage lost but still served by same network
- ▲ Coverage lost and no other service by same network

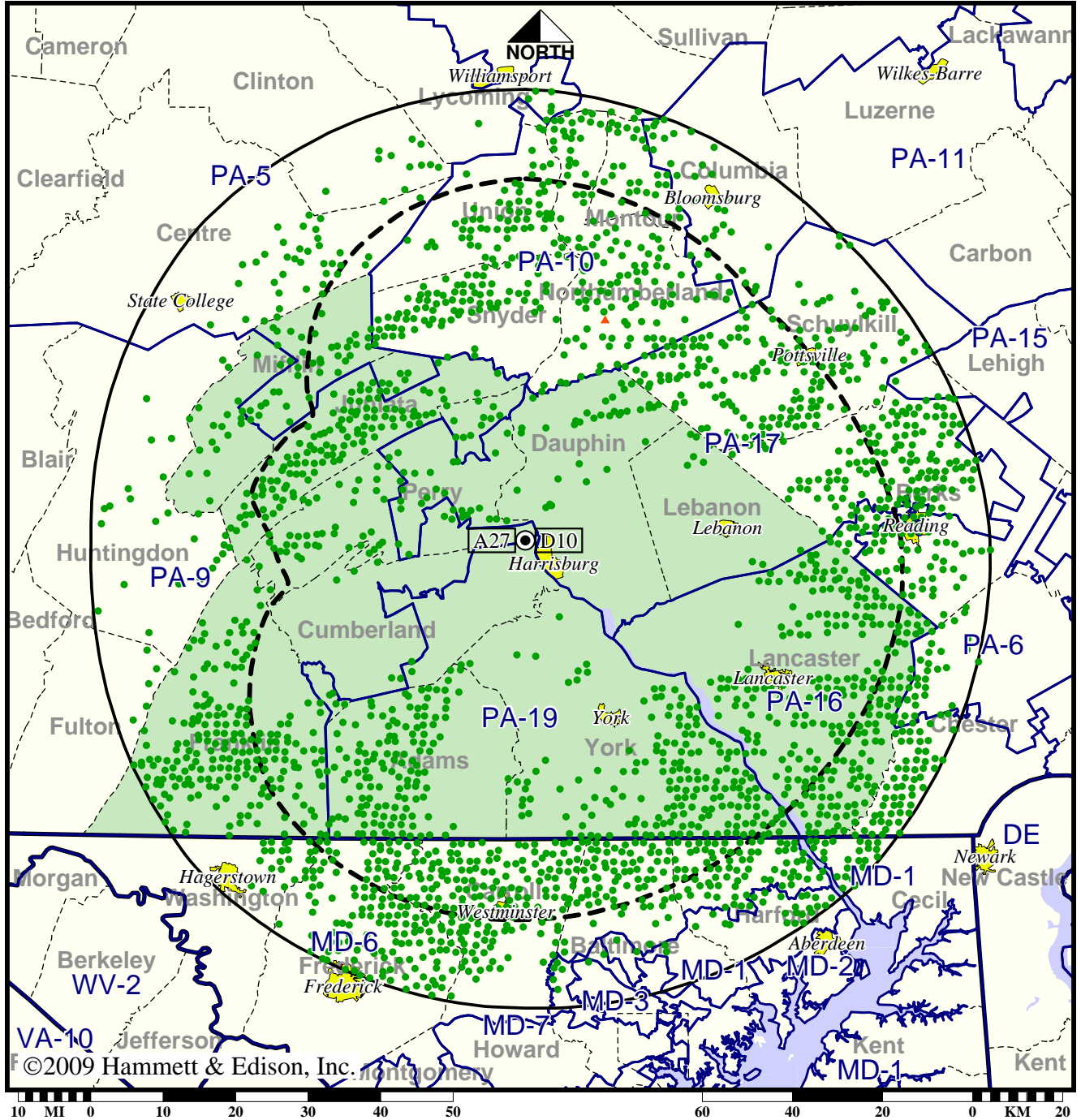
Analog service	1,402,106 persons
Digital service	1,988,217
Analog loss	244
Digital gain	586,355
Net gain	586,111

Station WHTM-TV • Analog Channel 27, DTV Channel 10 • Harrisburg, PA

Approved Post-Transition Operation: Granted Construction Permit

Digital CP (solid): 19.7 kW ERP at 346 m HAAT, Network: ABC
 vs. Analog (dashed): 2140 kW ERP at 346 m HAAT, Network: ABC

Market: Harrisburg-Lancaster-Lebanon-York, PA



- Coverage gained after DTV transition
- No symbol = no change in coverage
- ▲ Coverage lost after DTV transition

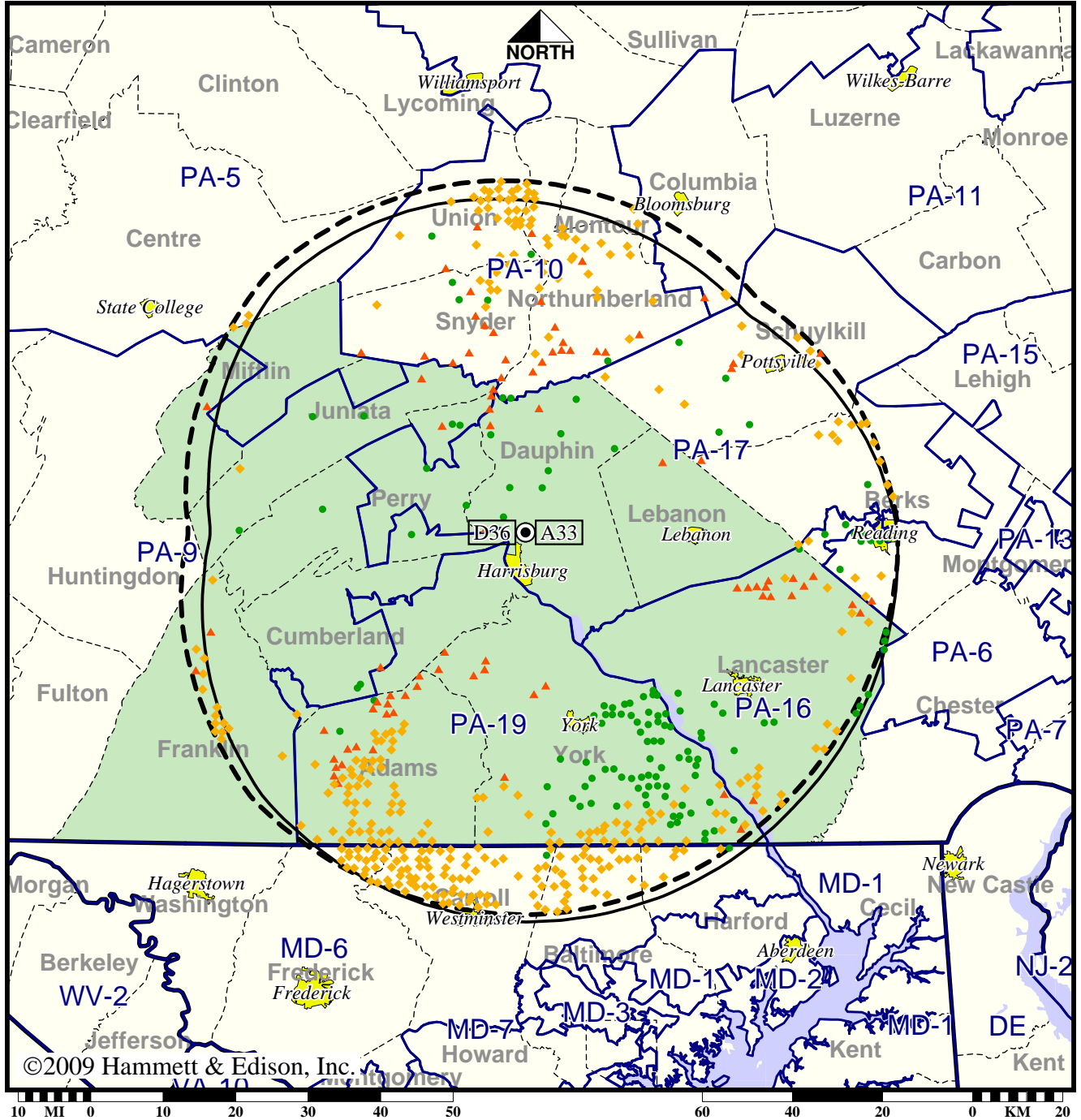
Analog service	1,402,106 persons
Digital service	2,346,825
Analog loss	67
Digital gain	944,786
Net gain	944,719

Station WITF-TV • Analog Channel 33, DTV Channel 36 • Harrisburg, PA

Expected Operation on June 13: Licensed

Digital License (solid): 50.0 kW ERP at 411 m HAAT, Network: PBS
 vs. Analog (dashed): 1100 kW ERP at 427 m HAAT, Network: PBS

Market: Harrisburg-Lancaster-Lebanon-York, PA



©2009 Hammett & Edison, Inc.

- Coverage gained after DTV transition
- No symbol = no change in coverage
- ◆ Coverage lost but still served by same network
- ▲ Coverage lost and no other service by same network

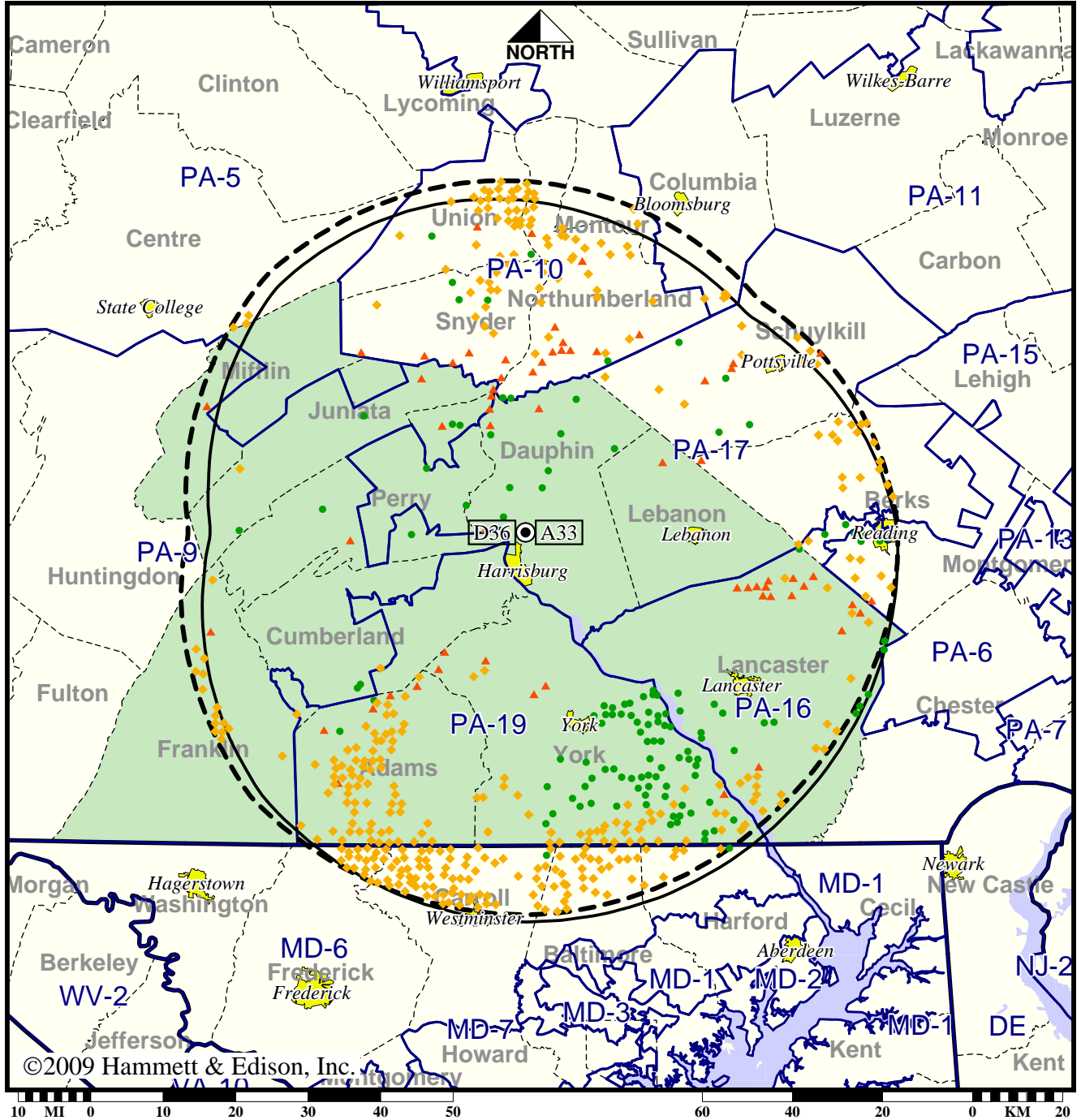
Analog service	1,745,806 persons
Digital service	1,704,191
Analog loss	144,077
Digital gain	102,462
Net gain	-41,615

Station WITF-TV • Analog Channel 33, DTV Channel 36 • Harrisburg, PA

Approved Post-Transition Operation: Licensed

Digital License (solid): 50.0 kW ERP at 411 m HAAT, Network: PBS
 vs. Analog (dashed): 1100 kW ERP at 427 m HAAT, Network: PBS

Market: Harrisburg-Lancaster-Lebanon-York, PA



©2009 Hammett & Edison, Inc.



- Coverage gained after DTV transition
- No symbol = no change in coverage
- ◆ Coverage lost but still served by same network
- ▲ Coverage lost and no other service by same network

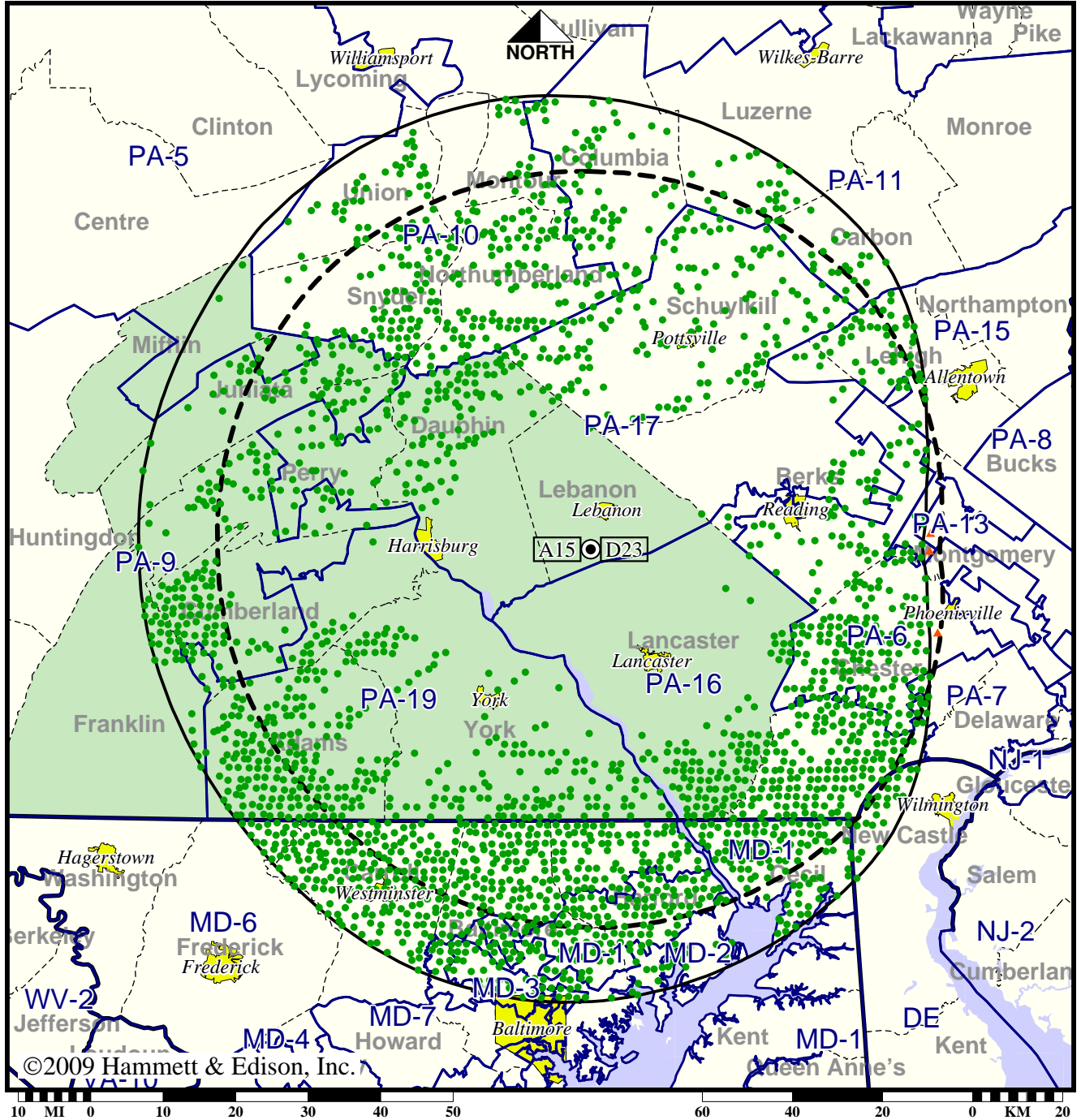
Analog service	1,745,806 persons
Digital service	1,690,112
Analog loss	151,745
Digital gain	96,051
Net gain	-55,694

Station WLYH-TV • Analog Channel 15, DTV Channel 23 • Lancaster, PA

Expected Operation on June 13: Licensed

Digital License (solid): 500 kW ERP at 381 m HAAT
 vs. Analog (dashed): 1050 kW ERP at 415 m HAAT

Market: Harrisburg-Lancaster-Lebanon-York, PA



- Coverage gained after DTV transition
- No symbol = no change in coverage
- ▲ Coverage lost after DTV transition

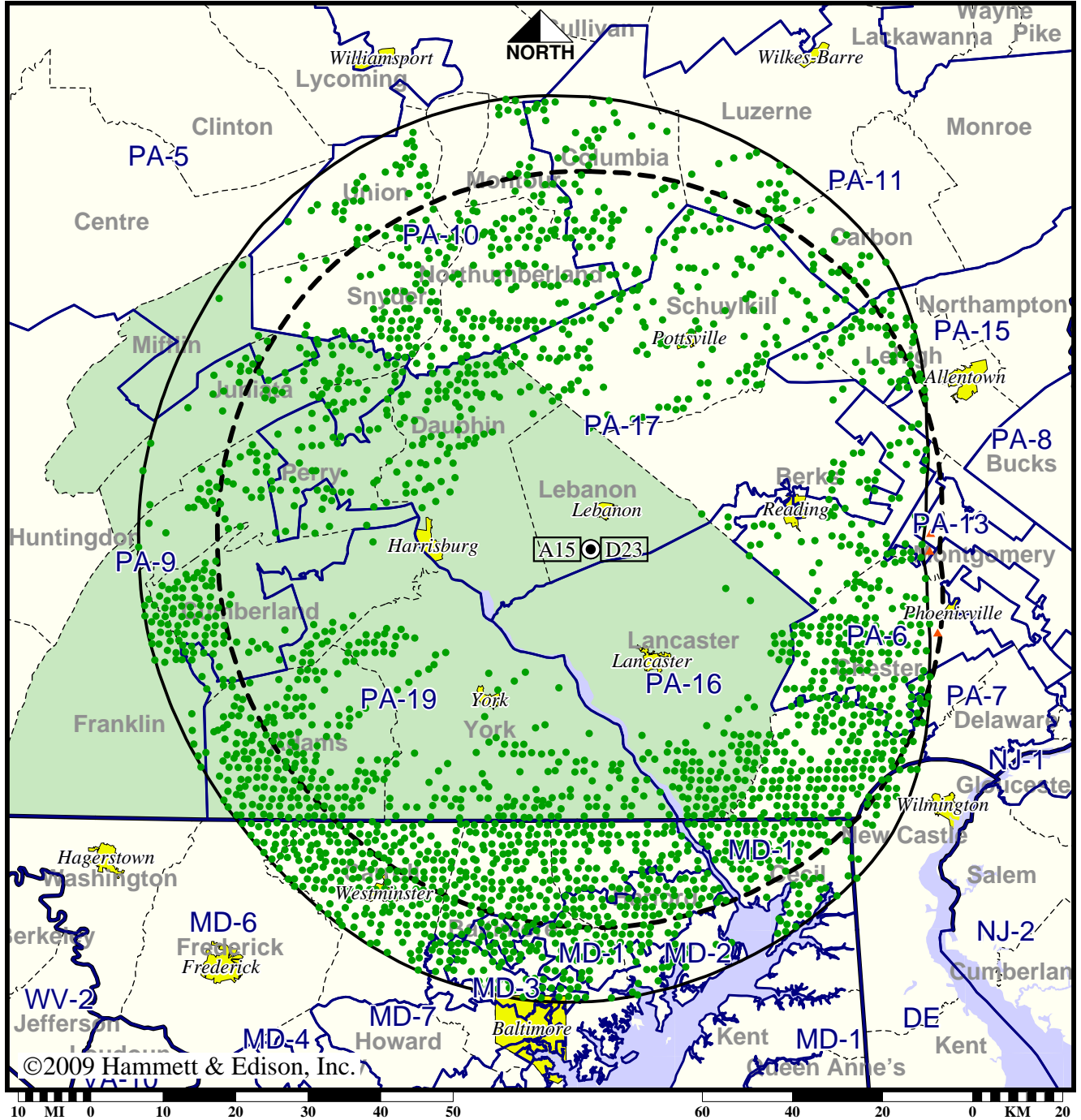
Analog service	1,773,890 persons
Digital service	3,102,391
Analog loss	3,327
Digital gain	1,331,828
Net gain	1,328,501

Station WLYH-TV • Analog Channel 15, DTV Channel 23 • Lancaster, PA

Approved Post-Transition Operation: Licensed

Digital License (solid): 500 kW ERP at 381 m HAAT
 vs. Analog (dashed): 1050 kW ERP at 415 m HAAT

Market: Harrisburg-Lancaster-Lebanon-York, PA



- Coverage gained after DTV transition
- No symbol = no change in coverage
- ▲ Coverage lost after DTV transition

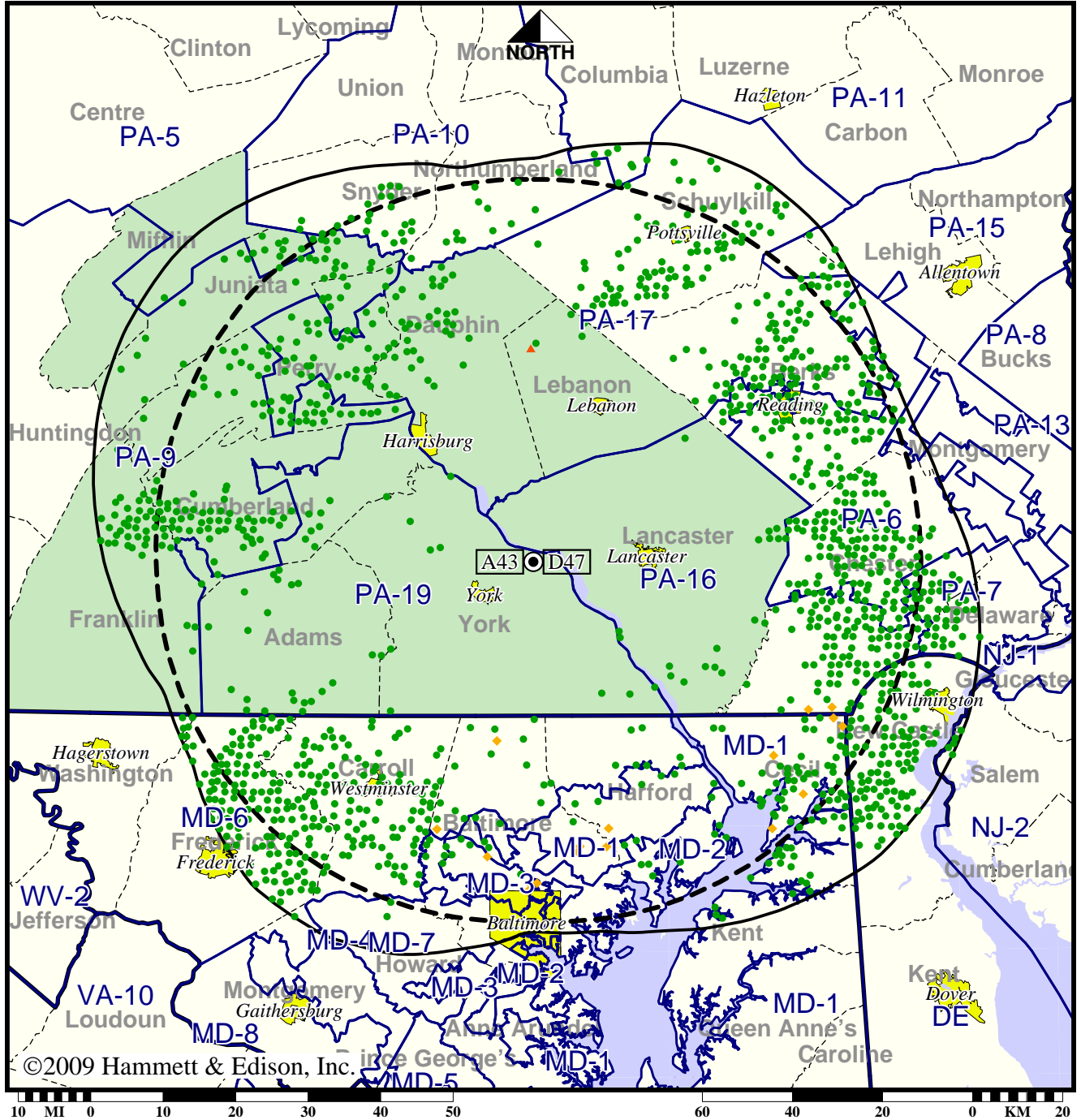
Analog service	1,773,890 persons
Digital service	3,078,847
Analog loss	3,327
Digital gain	1,308,284
Net gain	1,304,957

TV Station WPMT • Analog Channel 43, DTV Channel 47 • York, PA

Expected Operation on June 13: Licensed

Digital License (solid): 933 kW ERP at 385 m HAAT, Network: Fox
 vs. Analog (dashed): 2140 kW ERP at 415 m HAAT, Network: Fox

Market: Harrisburg-Lancaster-Lebanon-York, PA



- Coverage gained after DTV transition
- No symbol = no change in coverage
- ◆ Coverage lost but still served by same network
- ▲ Coverage lost and no other service by same network

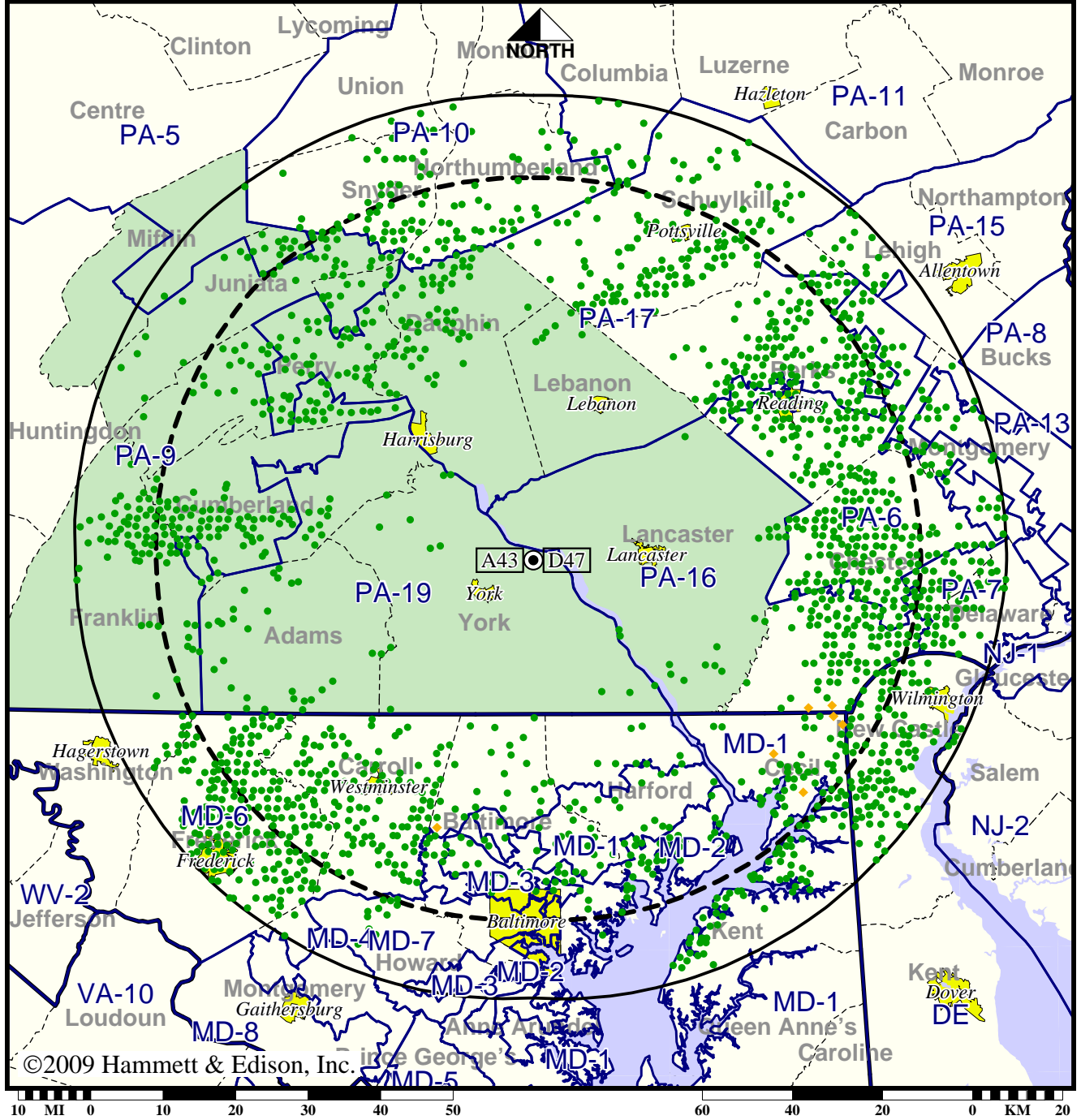
Analog service	1,941,277 persons
Digital service	2,858,954
Analog loss	31,343
Digital gain	949,020
Net gain	917,677

TV Station WPMT • Analog Channel 43, DTV Channel 47 • York, PA

Approved Post-Transition Operation: Granted Construction Permit

Digital CP (solid): 933 kW ERP at 385 m HAAT, Network: Fox
 vs. Analog (dashed): 2140 kW ERP at 415 m HAAT, Network: Fox

Market: Harrisburg-Lancaster-Lebanon-York, PA



- Coverage gained after DTV transition
- No symbol = no change in coverage
- ◆ Coverage lost but still served by same network

Analog service	1,941,277 persons
Digital service	3,370,416
Analog loss	2,426
Digital gain	1,431,565
Net gain	1,429,139