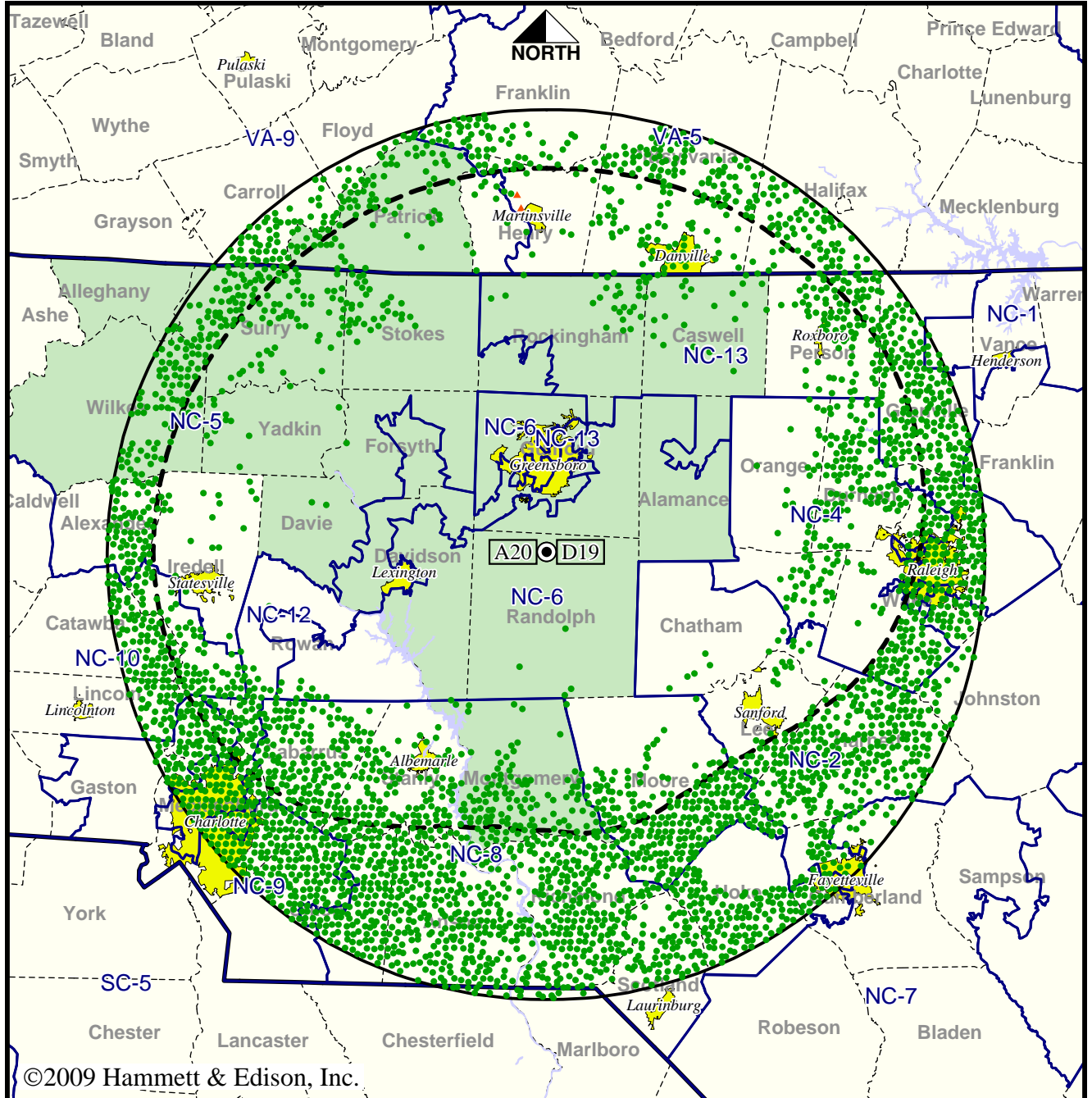


TV Station WCWG • Analog Channel 20, DTV Channel 19 • Lexington, NC

Expected Operation on June 13: Licensed

Digital License (solid): 800 kW ERP at 576 m HAAT
 vs. Analog (dashed): 5000 kW ERP at 553 m HAAT

Market: Greensboro-High Point-Winston Salem, NC



©2009 Hammett & Edison, Inc.

10 MI 0 10 20 30 40 50 60 70 100 80 60 40 20 0 KM 20

- Coverage gained after DTV transition
- No symbol = no change in coverage
- ▲ Coverage lost after DTV transition

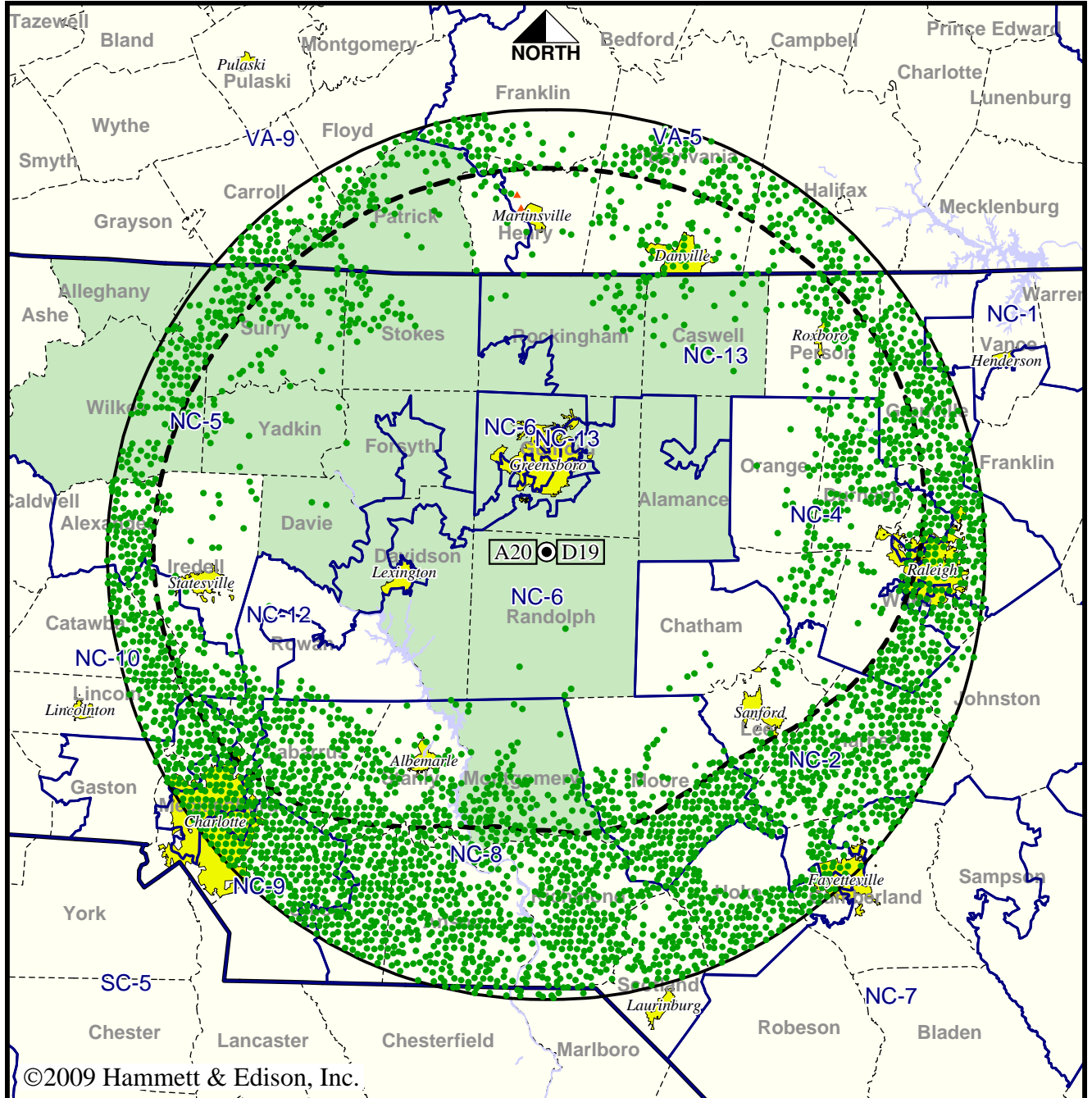
Analog service	2,321,596 persons
Digital service	4,215,597
Analog loss	2,927
Digital gain	1,896,928
Net gain	1,894,001

TV Station WCWG • Analog Channel 20, DTV Channel 19 • Lexington, NC

Approved Post-Transition Operation: Licensed

Digital License (solid): 800 kW ERP at 576 m HAAT
 vs. Analog (dashed): 5000 kW ERP at 553 m HAAT

Market: Greensboro-High Point-Winston Salem, NC



©2009 Hammett & Edison, Inc.

10 MI 0 10 20 30 40 50 60 70 100 80 60 40 20 0 KM 20

- Coverage gained after DTV transition
- No symbol = no change in coverage
- ▲ Coverage lost after DTV transition

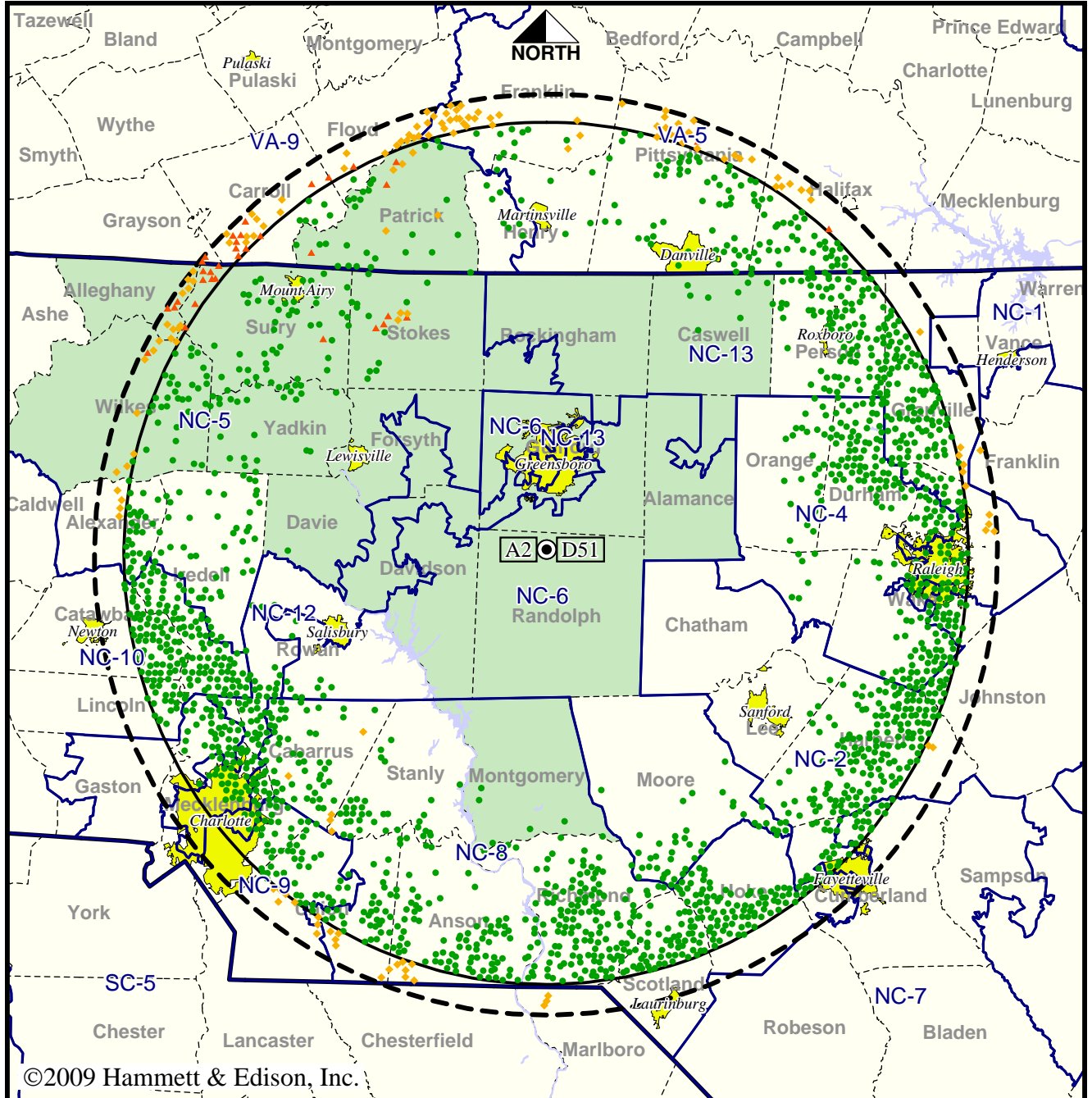
Analog service	2,321,596 persons
Digital service	4,202,200
Analog loss	2,927
Digital gain	1,883,531
Net gain	1,880,604

Station WFMY-TV • Analog Channel 2, DTV Channel 51 • Greensboro, NC

Expected Operation on June 13: Licensed

Digital License (solid): 1000 kW ERP at 569 m HAAT, Network: CBS
 vs. Analog (dashed): 100 kW ERP at 551 m HAAT, Network: CBS

Market: Greensboro-High Point-Winston Salem, NC



©2009 Hammett & Edison, Inc.

- Coverage gained after DTV transition
- No symbol = no change in coverage
- ◆ Coverage lost but still served by same network
- ▲ Coverage lost and no other service by same network

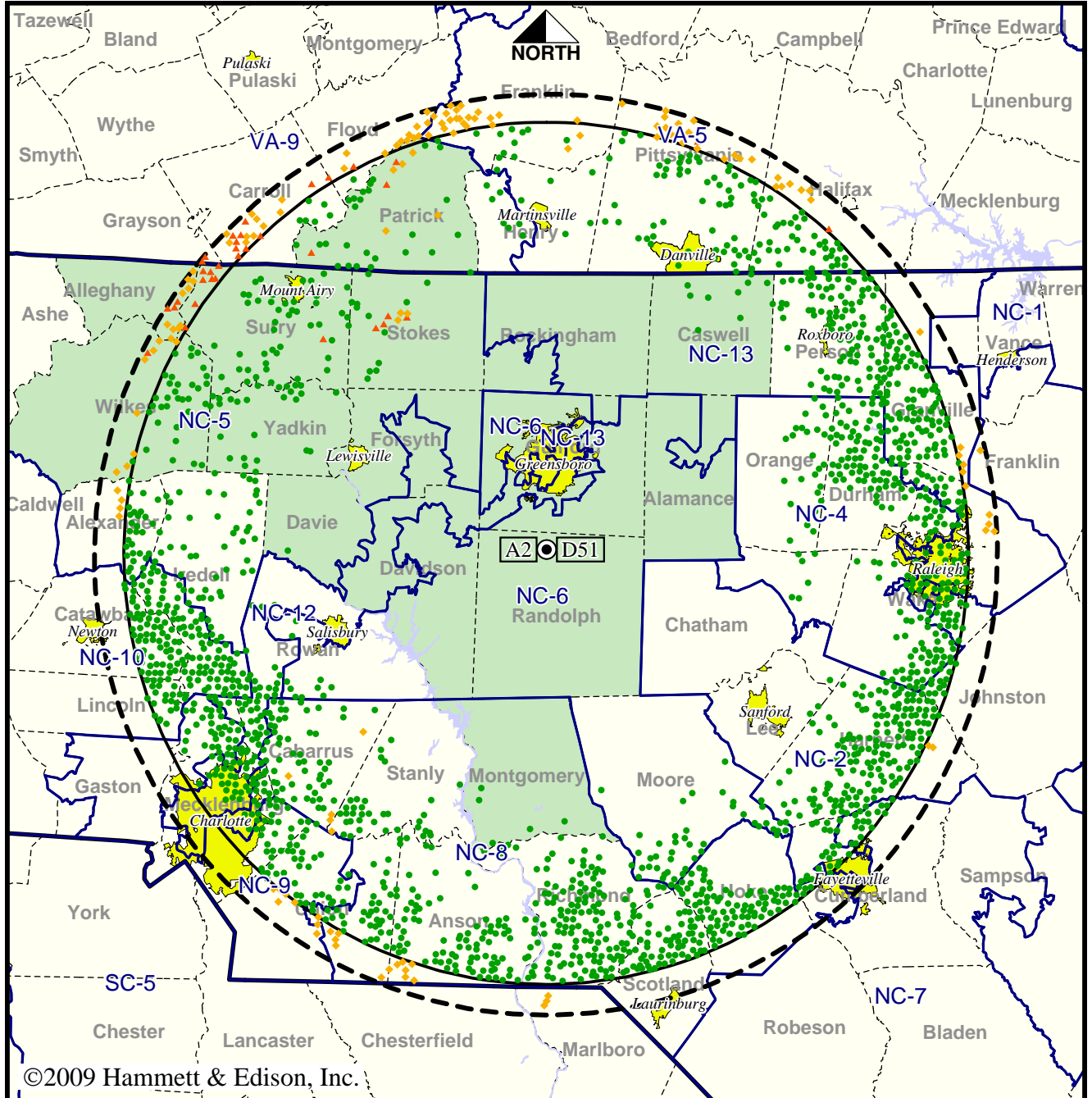
Analog service	2,721,423 persons
Digital service	3,650,656
Analog loss	22,032
Digital gain	951,265
Net gain	929,233

Station WFMY-TV • Analog Channel 2, DTV Channel 51 • Greensboro, NC

Approved Post-Transition Operation: Licensed

Digital License (solid): 1000 kW ERP at 569 m HAAT, Network: CBS
 vs. Analog (dashed): 100 kW ERP at 551 m HAAT, Network: CBS

Market: Greensboro-High Point-Winston Salem, NC



- Coverage gained after DTV transition
- No symbol = no change in coverage
- ◆ Coverage lost but still served by same network
- ▲ Coverage lost and no other service by same network

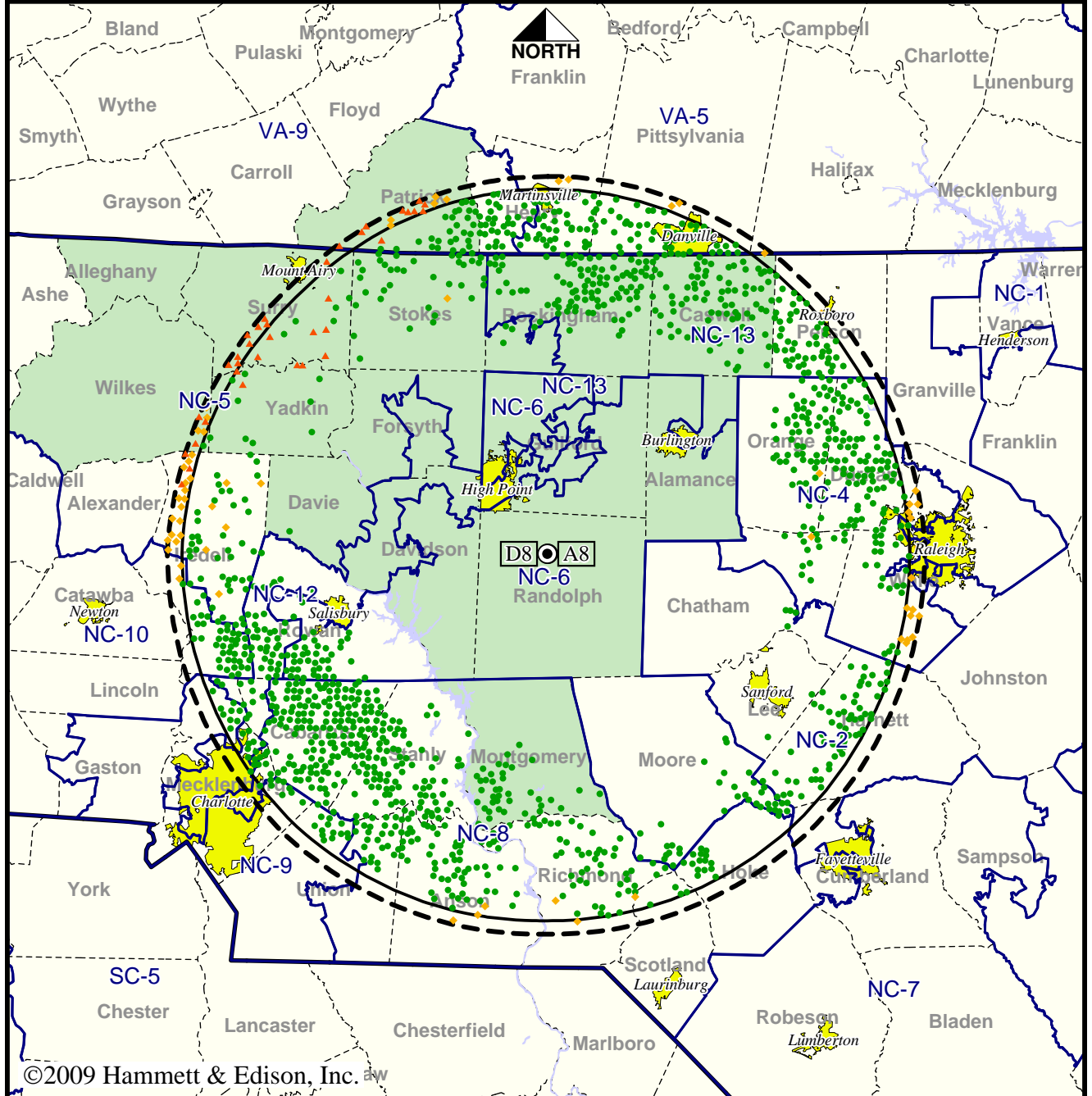
Analog service	2,721,423 persons
Digital service	3,632,765
Analog loss	22,032
Digital gain	933,374
Net gain	911,342

TV Station WGHP • Analog Channel 8, DTV Channel 8 • High Point, NC

Expected Operation on June 13: Special Temporary Authorization

Digital STA (solid): 11.0 kW ERP at 387 m HAAT, Network: Fox
 vs. Analog (dashed): 300 kW ERP at 398 m HAAT, Network: Fox

Market: Greensboro-High Point-Winston Salem, NC



©2009 Hammett & Edison, Inc. aw



- Coverage gained after DTV transition
- No symbol = no change in coverage
- ◆ Coverage lost but still served by same network
- ▲ Coverage lost and no other service by same network

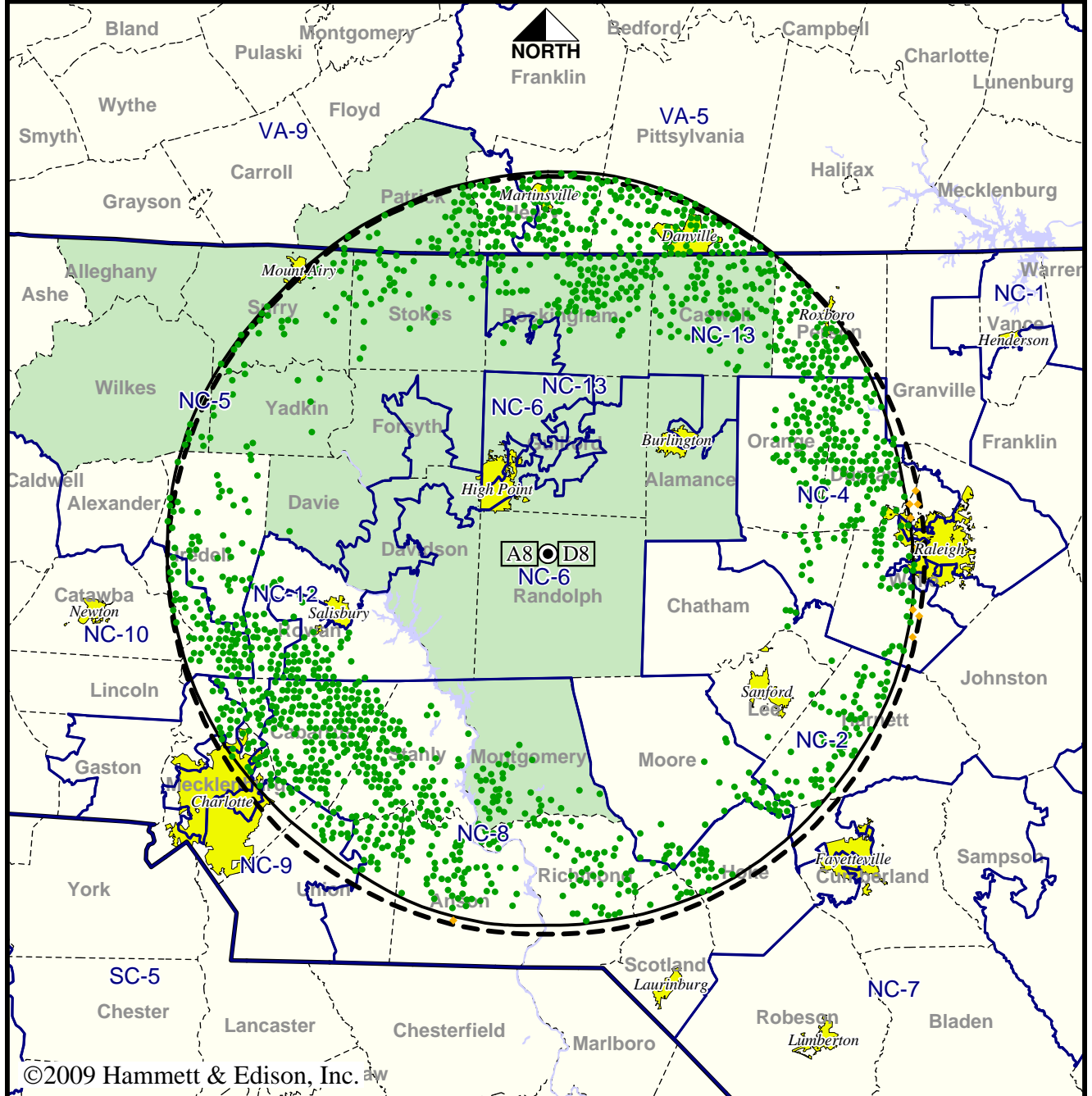
Analog service	2,040,193 persons
Digital service	2,575,510
Analog loss	37,030
Digital gain	572,347
Net gain	535,317

TV Station WGHP • Analog Channel 8, DTV Channel 8 • High Point, NC

Approved Post-Transition Operation: Granted Construction Permit

Digital CP (solid): 18.8 kW ERP at 398 m HAAT, Network: Fox
 vs. Analog (dashed): 300 kW ERP at 398 m HAAT, Network: Fox

Market: Greensboro-High Point-Winston Salem, NC



©2009 Hammett & Edison, Inc. aw

- Coverage gained after DTV transition
- No symbol = no change in coverage
- ◆ Coverage lost but still served by same network

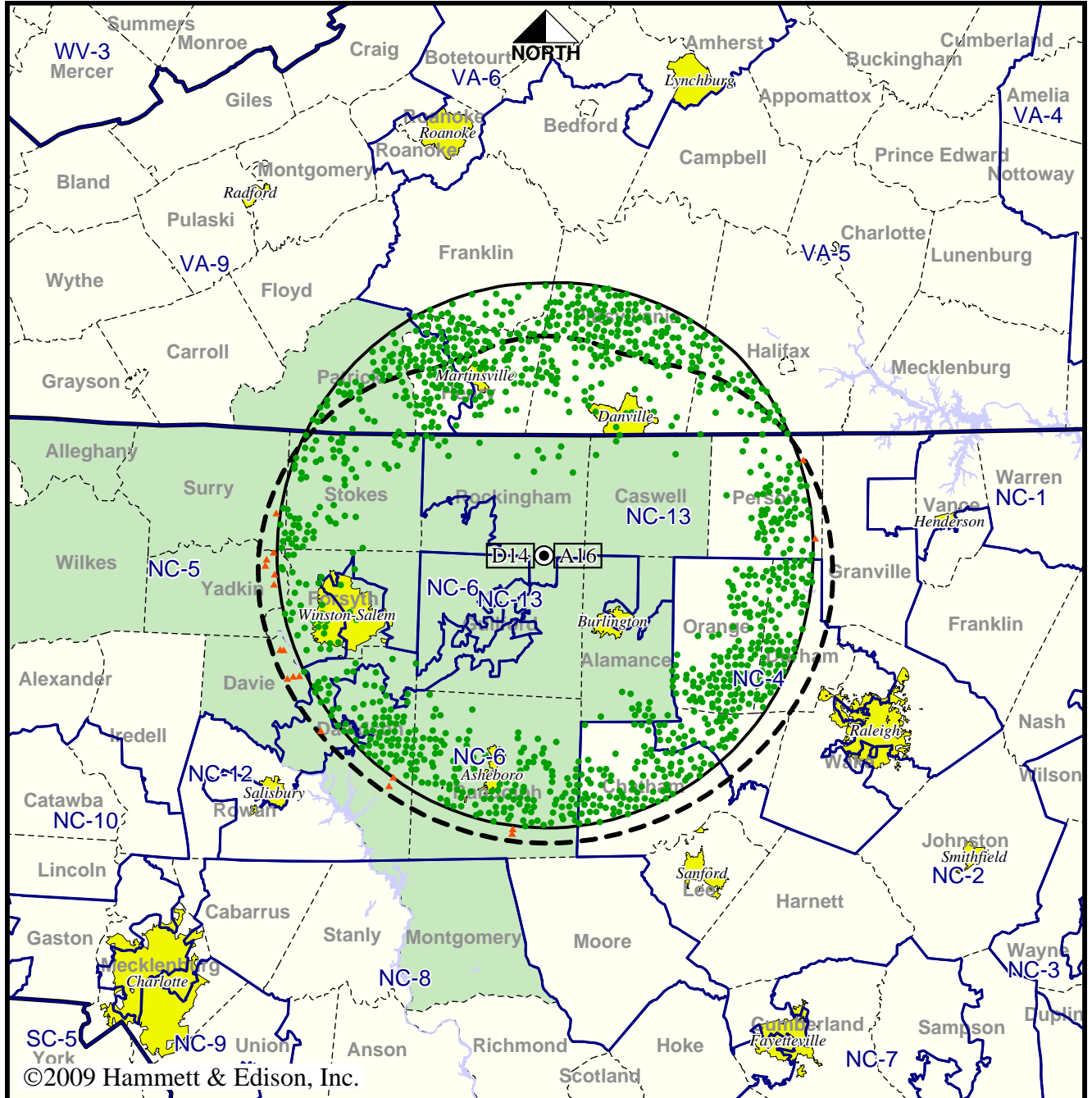
Analog service	2,040,193 persons
Digital service	2,696,873
Analog loss	14,180
Digital gain	670,860
Net gain	656,680

TV Station WGPX • Analog Channel 16, DTV Channel 14 • Burlington, NC

Expected Operation on June 13: Licensed

Digital License (solid): 95.0 kW ERP at 213 m HAAT
 vs. Analog (dashed): 5000 kW ERP at 241 m HAAT

Market: Greensboro-High Point-Winston Salem, NC



- Coverage gained after DTV transition
- No symbol = no change in coverage
- ▲ Coverage lost after DTV transition

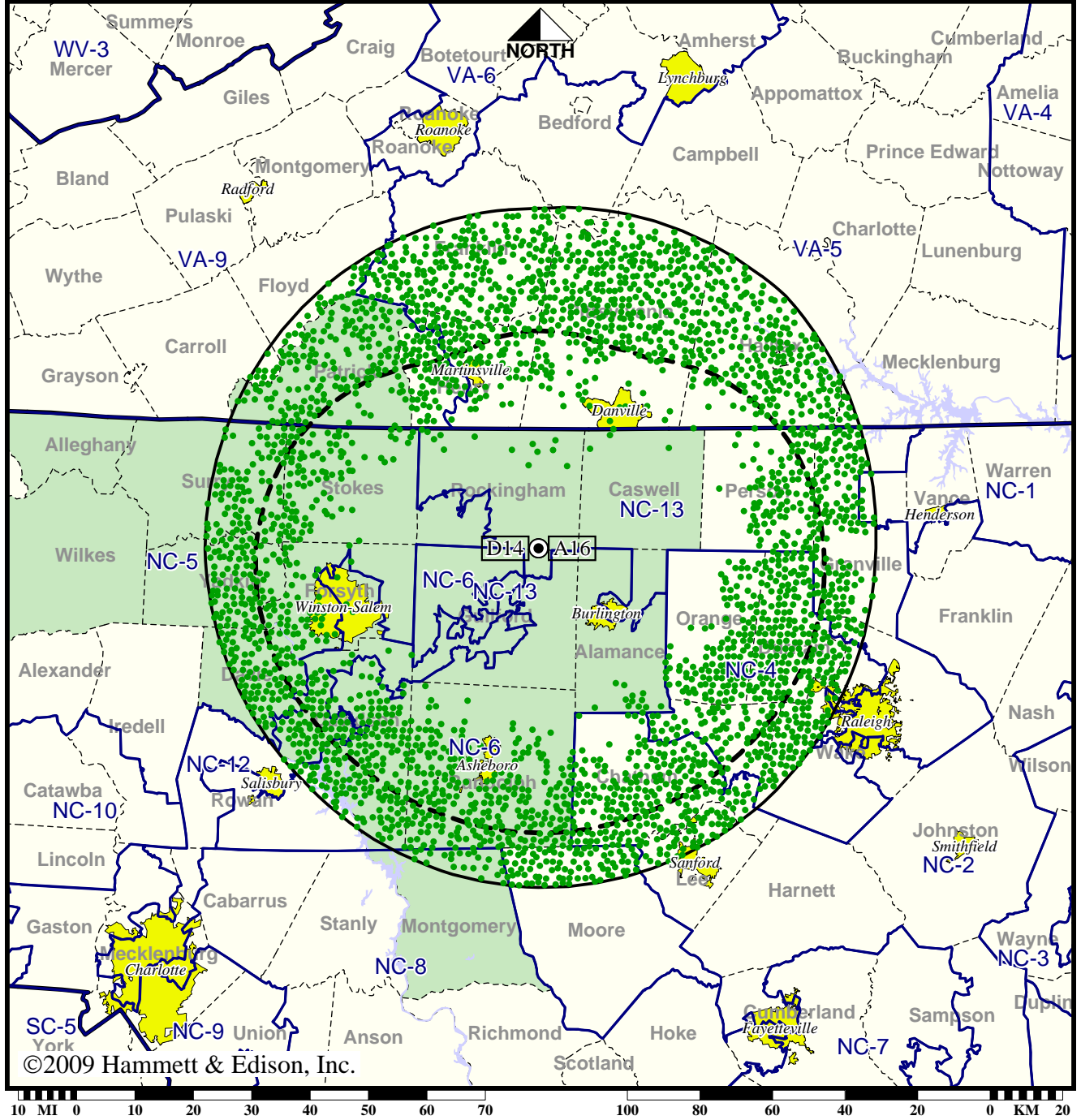
Analog service	1,230,886 persons
Digital service	1,674,760
Analog loss	4,690
Digital gain	448,564
Net gain	443,874

TV Station WGPX • Analog Channel 16, DTV Channel 14 • Burlington, NC

Approved Post-Transition Operation: Granted Construction Permit

Digital CP (solid): 1000 kW ERP at 239 m HAAT
 vs. Analog (dashed): 5000 kW ERP at 241 m HAAT

Market: Greensboro-High Point-Winston Salem, NC



● Coverage gained after DTV transition
 No symbol = no change in coverage

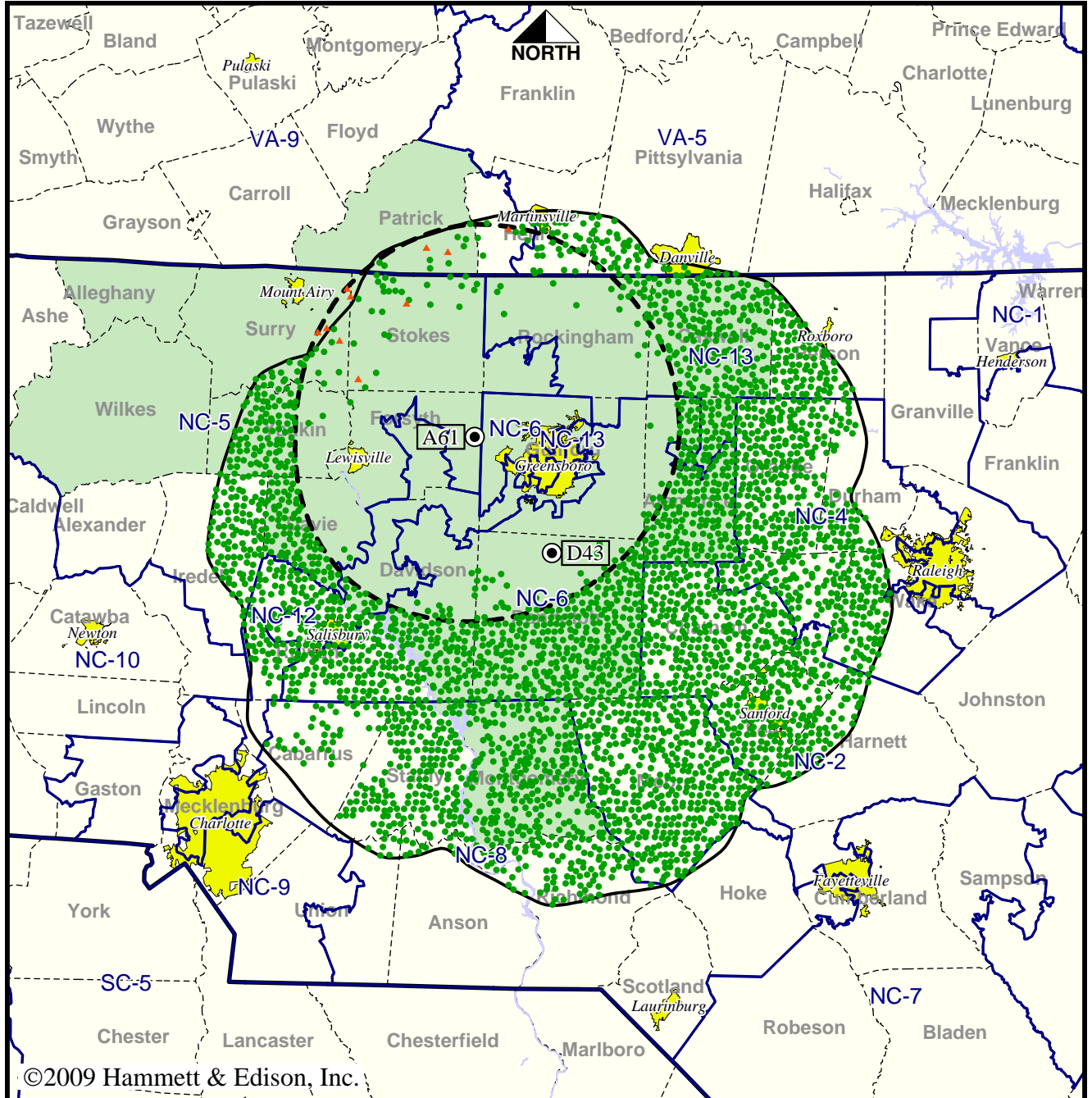
Analog service	1,230,886 persons
Digital service	2,154,502
Analog loss	0
Digital gain	923,616
Net gain	923,616

Station WLXI-TV • Analog Channel 61, DTV Channel 43 • Greensboro, NC

Expected Operation on June 13: Licensed

**Digital License (solid): 105 kW ERP at 527 m HAAT
vs. Analog (dashed): 933 kW ERP at 167 m HAAT**

Market: Greensboro-High Point-Winston Salem, NC



©2009 Hammett & Edison, Inc.



- Coverage gained after DTV transition
- No symbol = no change in coverage
- ▲ Coverage lost after DTV transition

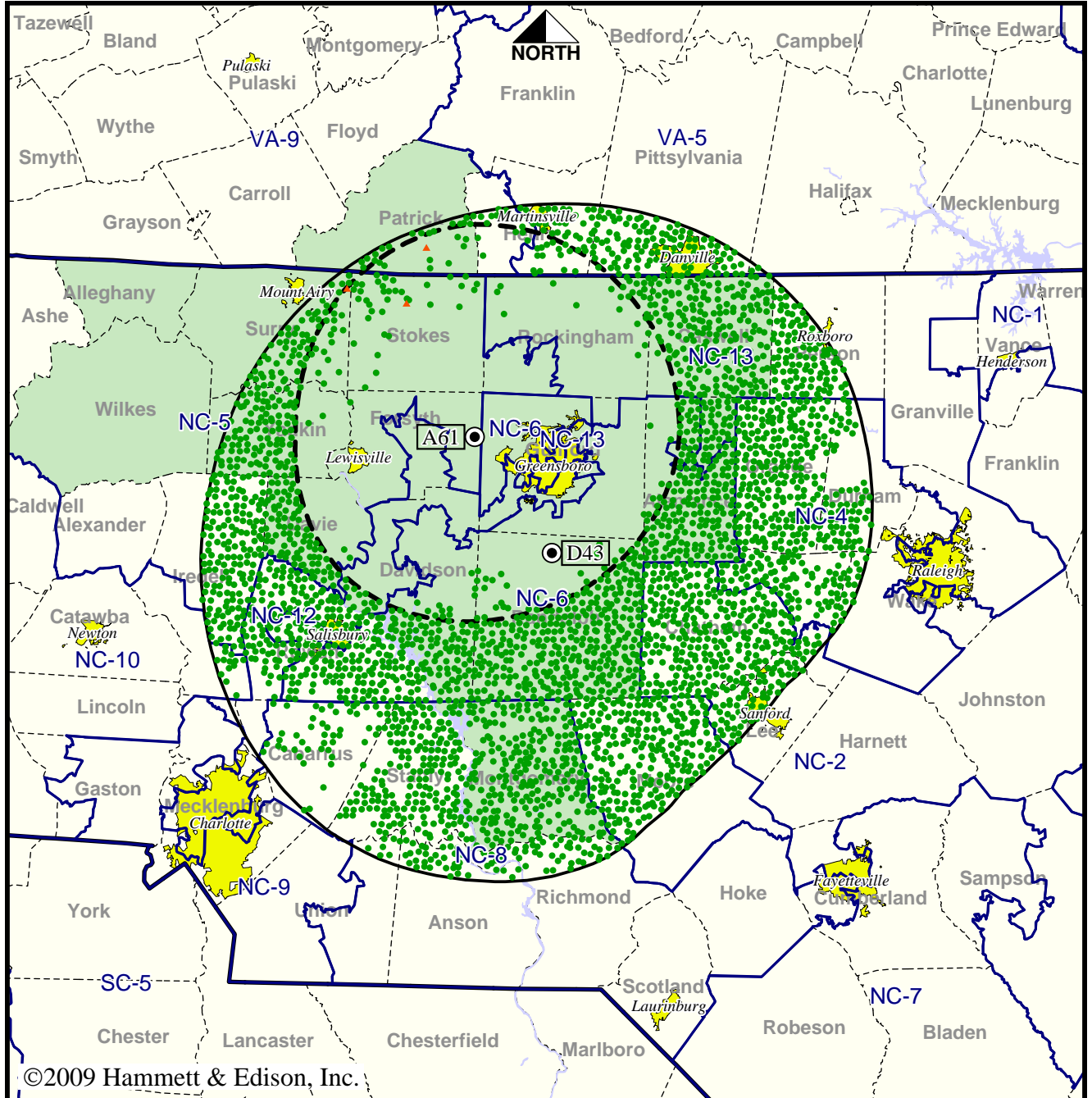
Analog service	1,133,408 persons
Digital service	2,136,735
Analog loss	1,741
Digital gain	1,005,068
Net gain	1,003,327

Station WLXI-TV • Analog Channel 61, DTV Channel 43 • Greensboro, NC

Approved Post-Transition Operation: Granted Construction Permit

Digital CP (solid): 130 kW ERP at 527 m HAAT
 vs. Analog (dashed): 933 kW ERP at 167 m HAAT

Market: Greensboro-High Point-Winston Salem, NC



©2009 Hammett & Edison, Inc.



- Coverage gained after DTV transition
- No symbol = no change in coverage
- ▲ Coverage lost after DTV transition

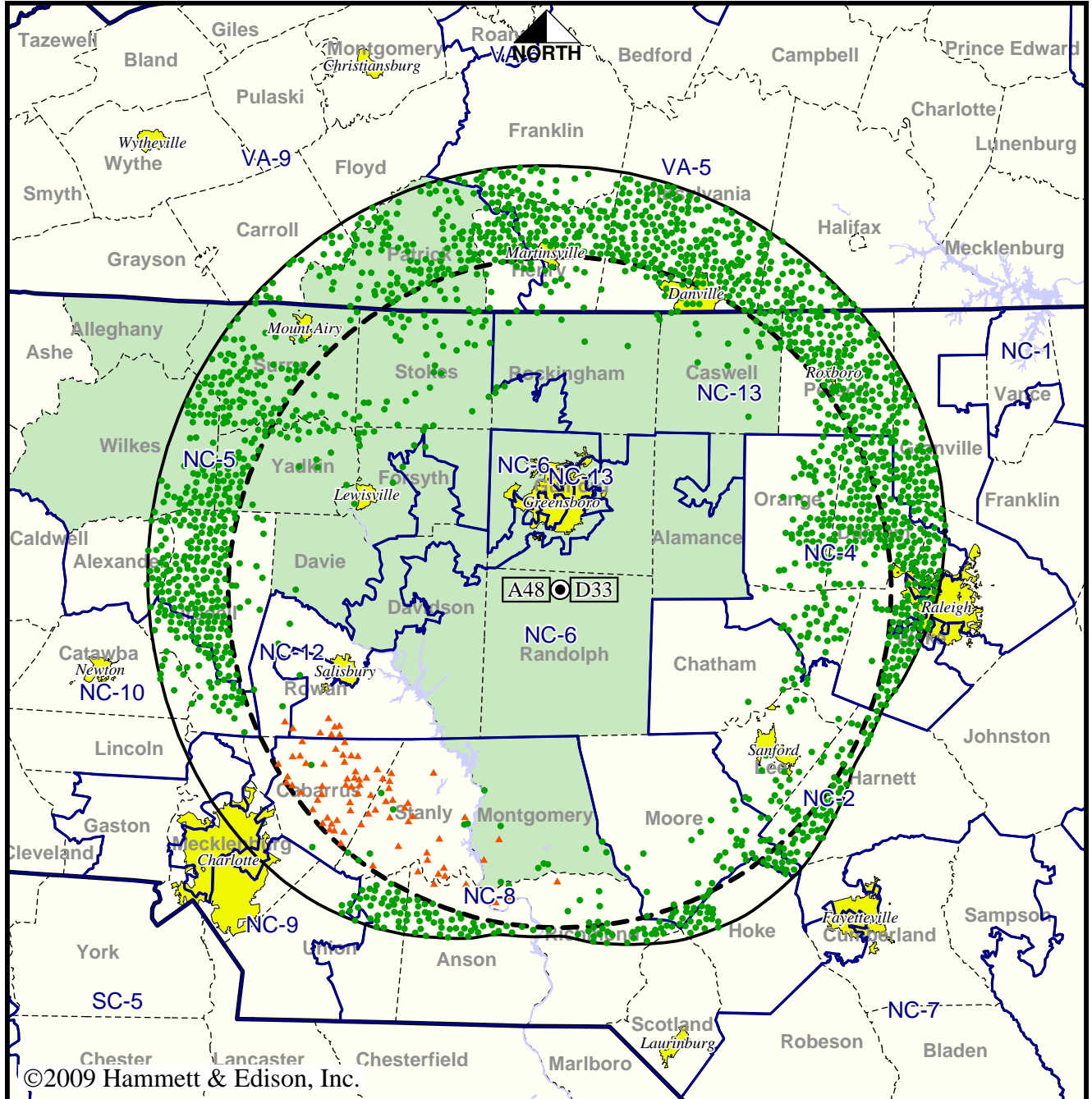
Analog service	1,133,408 persons
Digital service	2,112,230
Analog loss	224
Digital gain	979,046
Net gain	978,822

TV Station WMYV • Analog Channel 48, DTV Channel 33 • Greensboro, NC

Expected Operation on June 13: Licensed

Digital License (solid): 700 kW ERP at 575 m HAAT
 vs. Analog (dashed): 1700 kW ERP at 579 m HAAT

Market: Greensboro-High Point-Winston Salem, NC



- Coverage gained after DTV transition
- No symbol = no change in coverage
- ▲ Coverage lost after DTV transition

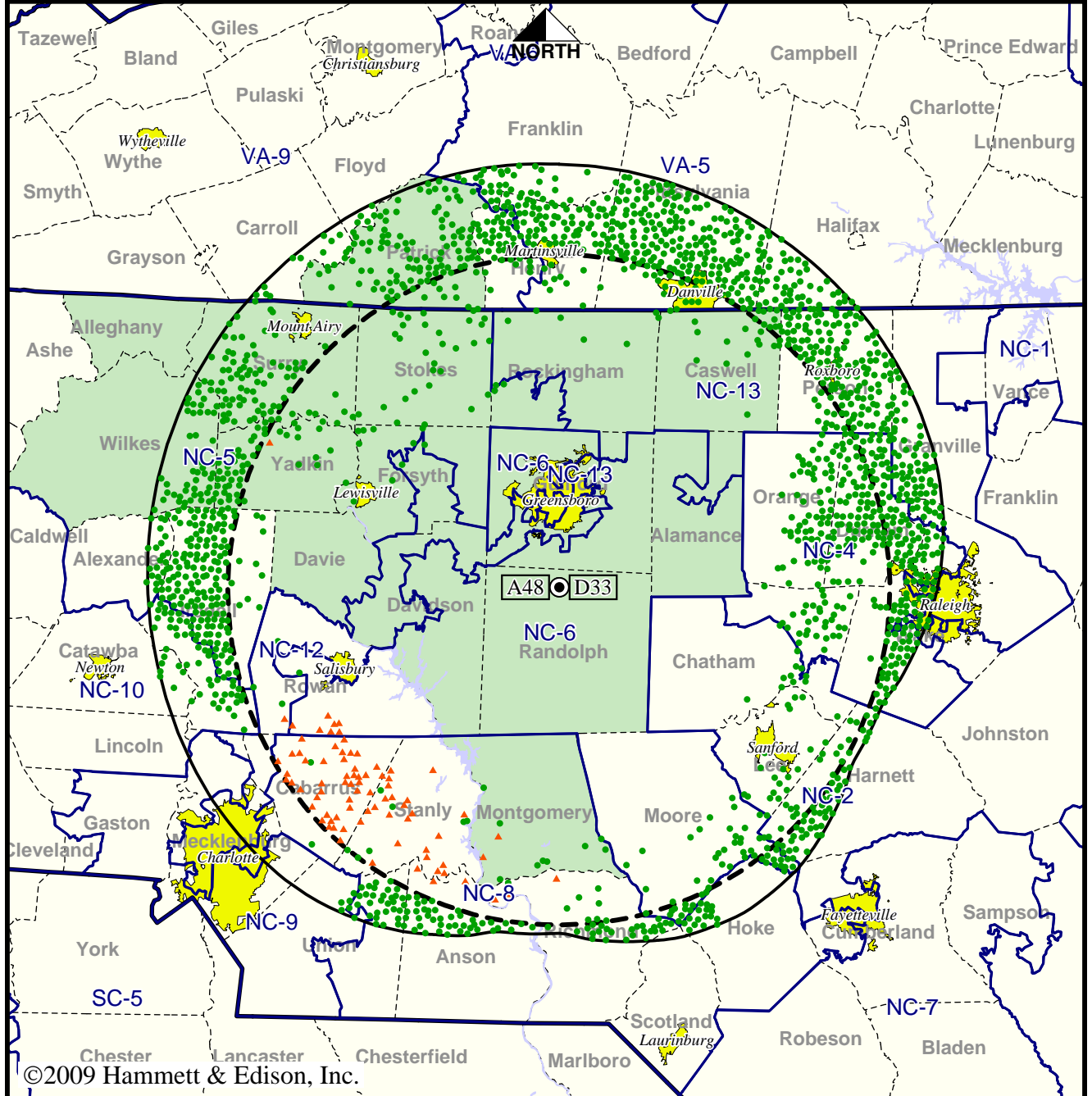
Analog service	2,018,295 persons
Digital service	2,735,193
Analog loss	29,666
Digital gain	746,564
Net gain	716,898

TV Station WMYV • Analog Channel 48, DTV Channel 33 • Greensboro, NC

Approved Post-Transition Operation: Licensed

Digital License (solid): 700 kW ERP at 575 m HAAT
 vs. Analog (dashed): 1700 kW ERP at 579 m HAAT

Market: Greensboro-High Point-Winston Salem, NC



- Coverage gained after DTV transition
- No symbol = no change in coverage
- ▲ Coverage lost after DTV transition

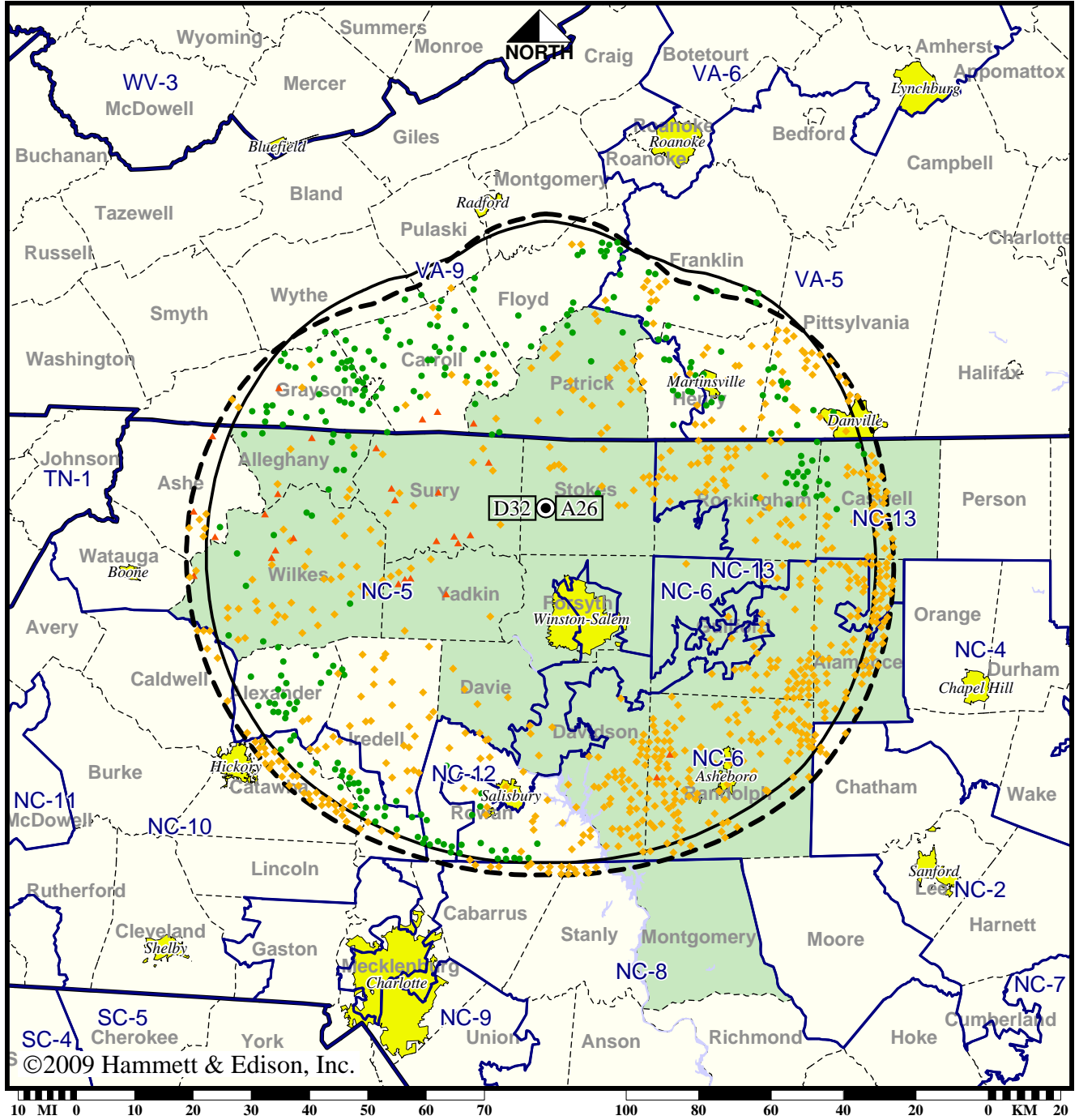
Analog service	2,018,295 persons
Digital service	2,708,484
Analog loss	29,742
Digital gain	719,931
Net gain	690,189

Station WUNL-TV • Analog Channel 26, DTV Channel 32 • Winston-Salem, NC

Expected Operation on June 13: Licensed

Digital License (solid): 198 kW ERP at 479 m HAAT, Network: PBS
 vs. Analog (dashed): 5000 kW ERP at 504 m HAAT, Network: PBS

Market: Greensboro-High Point-Winston Salem, NC



- Coverage gained after DTV transition
- No symbol = no change in coverage
- ◆ Coverage lost but still served by same network
- ▲ Coverage lost and no other service by same network

Analog service	1,802,372 persons
Digital service	1,661,684
Analog loss	196,000
Digital gain	55,312
Net gain	-140,688

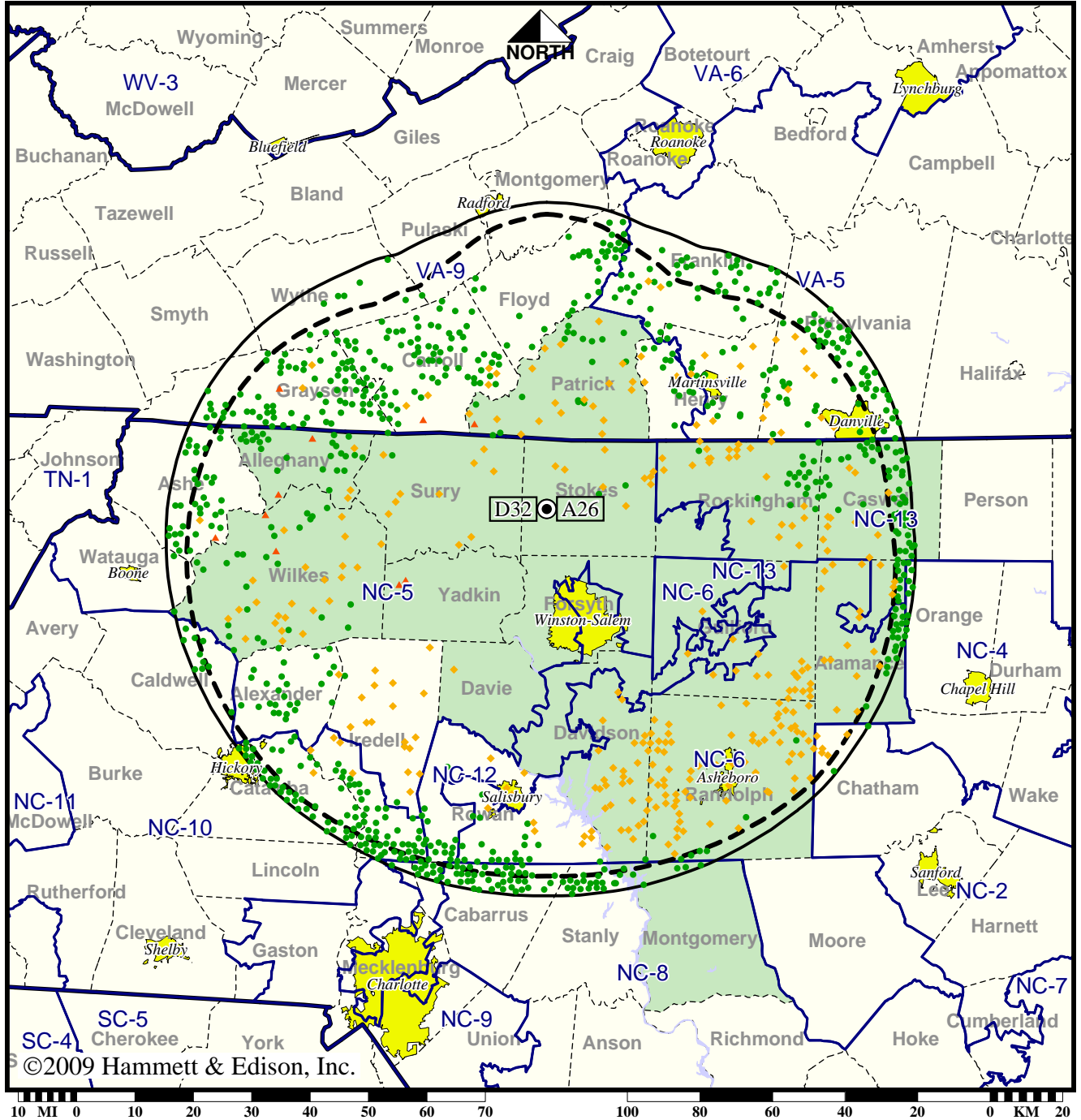
©2009 Hammett & Edison, Inc.

Station WUNL-TV • Analog Channel 26, DTV Channel 32 • Winston-Salem, NC

Approved Post-Transition Operation: Granted Construction Permit

Digital CP (solid): 400 kW ERP at 504 m HAAT, Network: PBS
 vs. Analog (dashed): 5000 kW ERP at 504 m HAAT, Network: PBS

Market: Greensboro-High Point-Winston Salem, NC



- Coverage gained after DTV transition
- No symbol = no change in coverage
- ◆ Coverage lost but still served by same network
- ▲ Coverage lost and no other service by same network

Analog service	1,802,372 persons
Digital service	1,931,508
Analog loss	84,860
Digital gain	213,996
Net gain	129,136

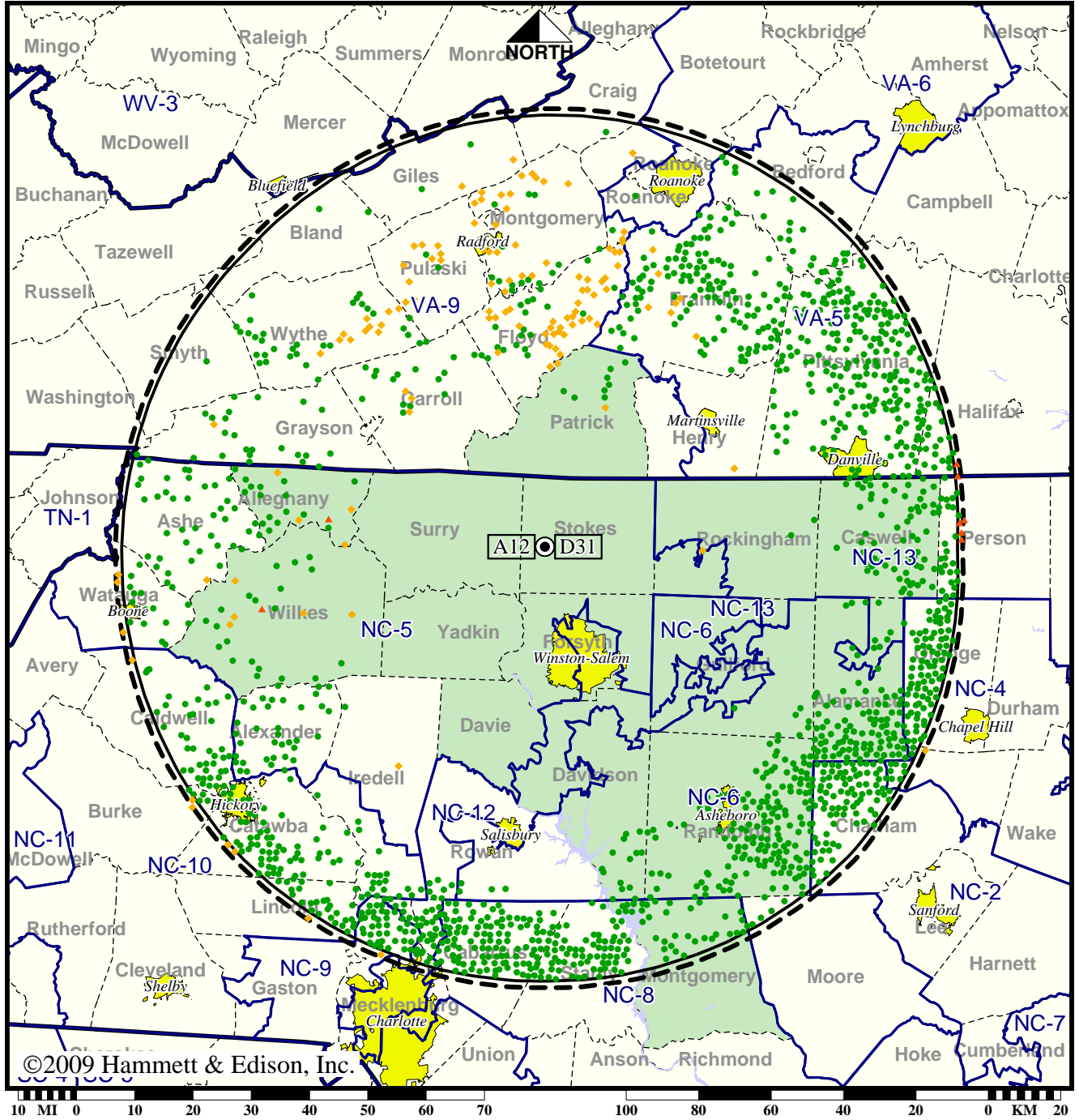
©2009 Hammett & Edison, Inc.

Station WXII-TV • Analog Channel 12, DTV Channel 31 • Winston-Salem, NC

Expected Operation on June 13: Licensed

Digital License (solid): 815 kW ERP at 572 m HAAT, Network: NBC
 vs. Analog (dashed): 316 kW ERP at 604 m HAAT, Network: NBC

Market: Greensboro-High Point-Winston Salem, NC



©2009 Hammett & Edison, Inc.

- Coverage gained after DTV transition
- No symbol = no change in coverage
- ◆ Coverage lost but still served by same network
- ▲ Coverage lost and no other service by same network

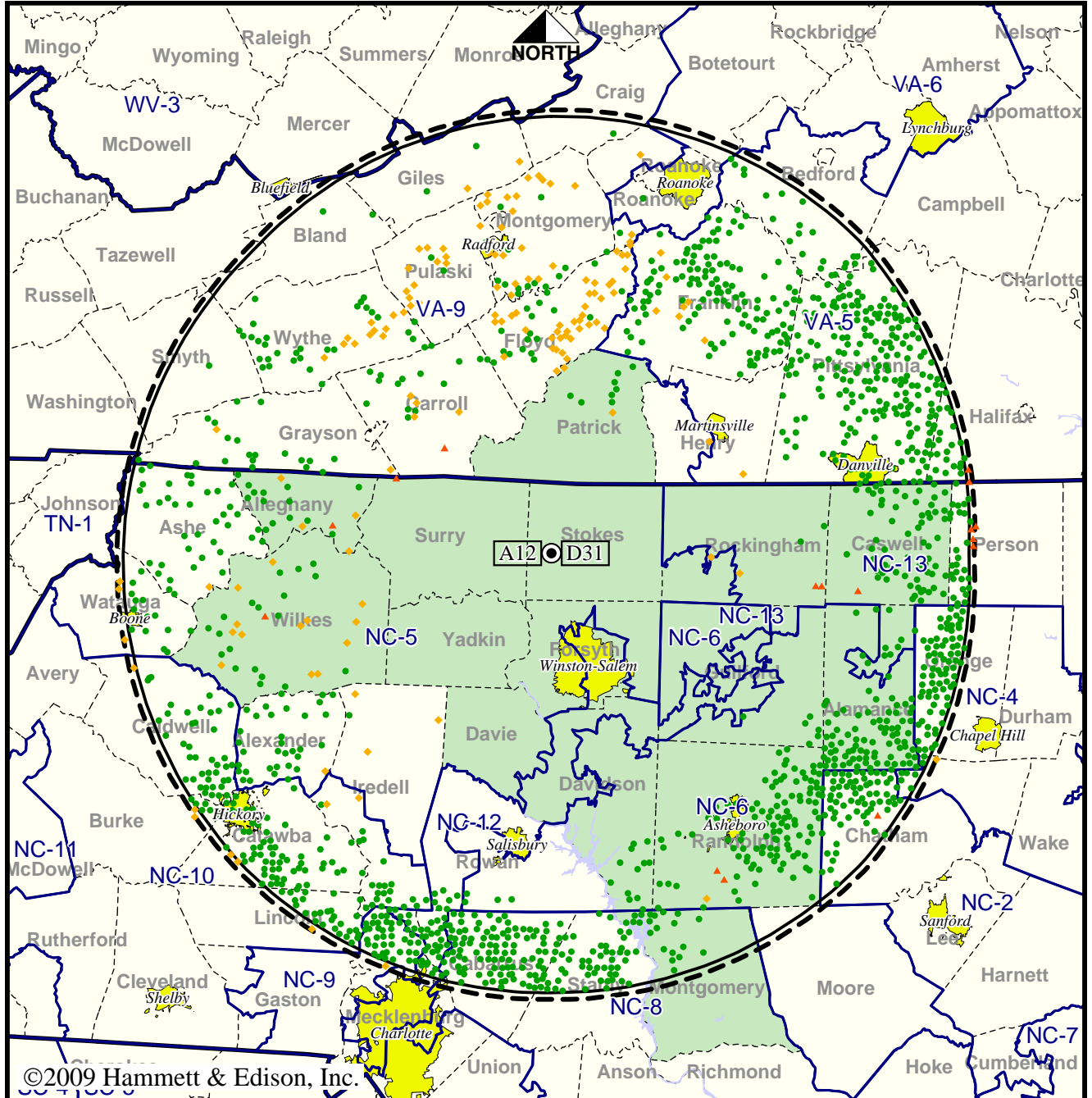
Analog service	2,110,263 persons
Digital service	2,511,565
Analog loss	20,044
Digital gain	421,346
Net gain	401,302

Station WXII-TV • Analog Channel 12, DTV Channel 31 • Winston-Salem, NC

Approved Post-Transition Operation: Licensed

Digital License (solid): 815 kW ERP at 572 m HAAT, Network: NBC
 vs. Analog (dashed): 316 kW ERP at 604 m HAAT, Network: NBC

Market: Greensboro-High Point-Winston Salem, NC



©2009 Hammett & Edison, Inc.

- Coverage gained after DTV transition
- No symbol = no change in coverage
- ◆ Coverage lost but still served by same network
- ▲ Coverage lost and no other service by same network

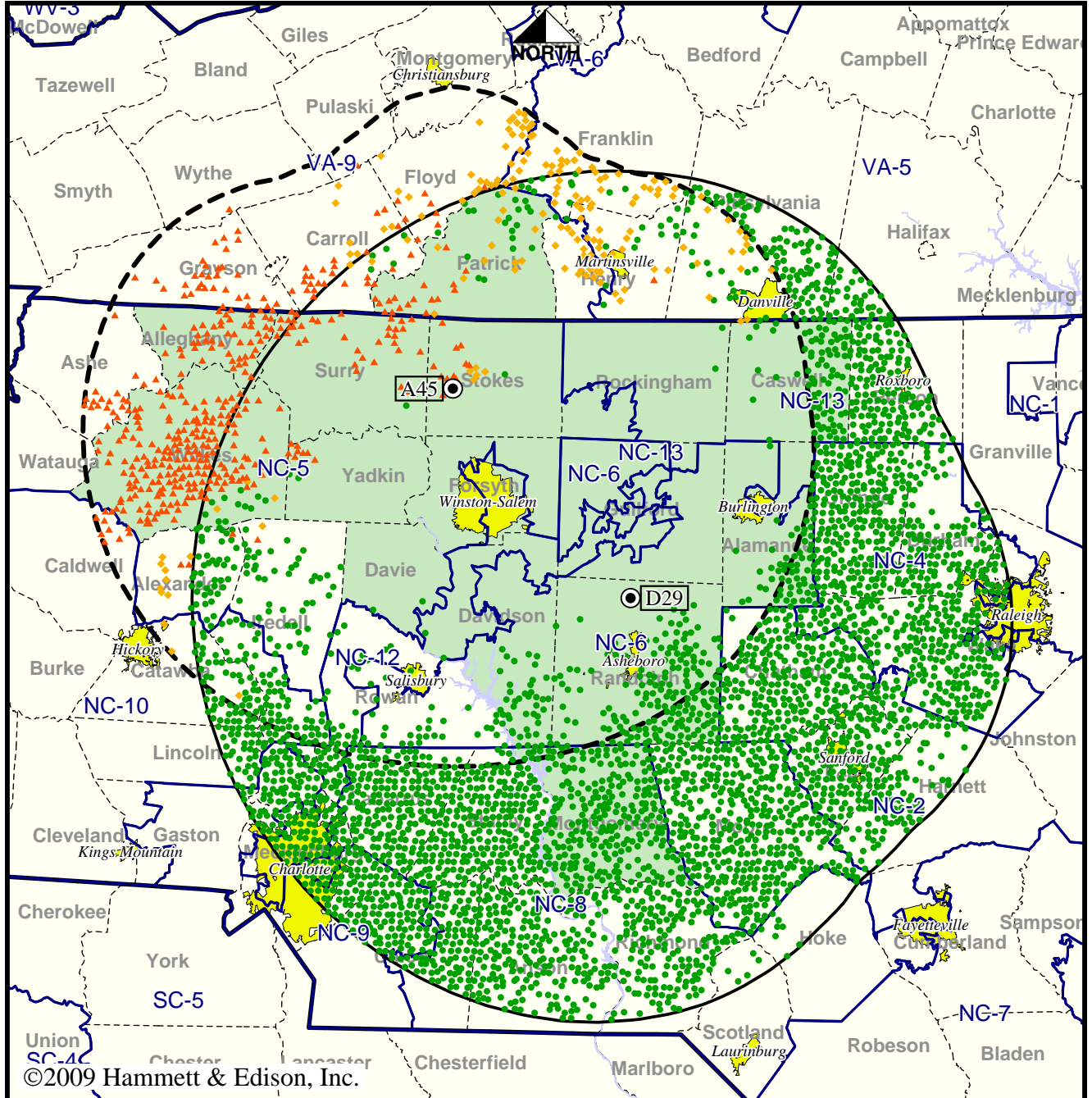
Analog service	2,110,263 persons
Digital service	2,471,887
Analog loss	24,780
Digital gain	386,404
Net gain	361,624

Station WXLV-TV • Analog Channel 45, DTV Channel 29 • Winston-Salem, NC

Expected Operation on June 13: Granted Construction Permit

**Digital CP (solid): 990 kW ERP at 576 m HAAT, Network: ABC
vs. Analog (dashed): 5000 kW ERP at 597 m HAAT, Network: ABC**

Market: Greensboro-High Point-Winston Salem, NC



- Coverage gained after DTV transition
- No symbol = no change in coverage
- ◆ Coverage lost but still served by same network
- ▲ Coverage lost and no other service by same network

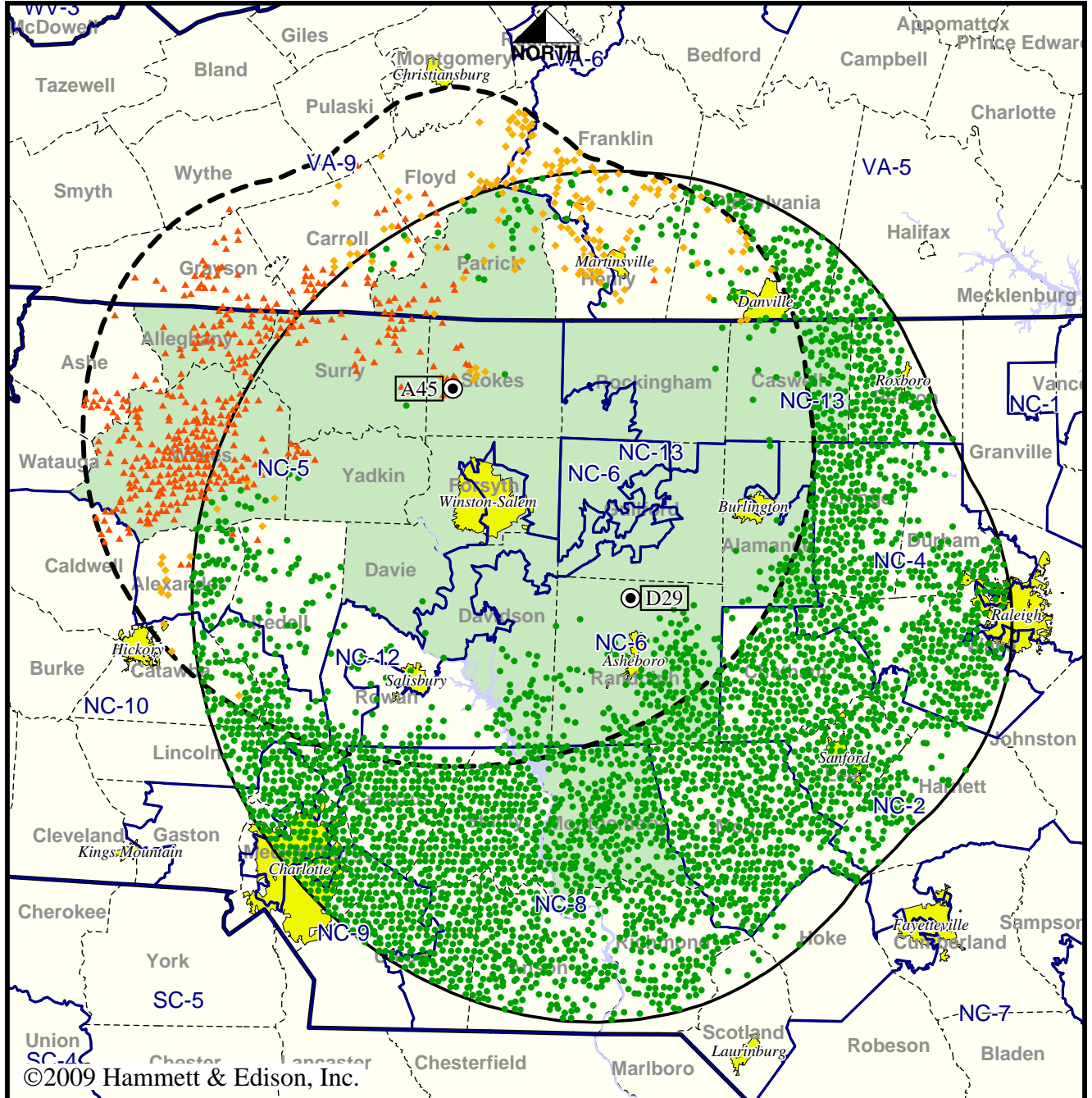
Analog service	1,828,999 persons
Digital service	3,414,392
Analog loss	109,342
Digital gain	1,694,735
Net gain	1,585,393

Station WXLV-TV • Analog Channel 45, DTV Channel 29 • Winston-Salem, NC

Approved Post-Transition Operation: Granted Construction Permit

Digital CP (solid): 990 kW ERP at 576 m HAAT, Network: ABC
 vs. Analog (dashed): 5000 kW ERP at 597 m HAAT, Network: ABC

Market: Greensboro-High Point-Winston Salem, NC



- Coverage gained after DTV transition
- No symbol = no change in coverage
- ◆ Coverage lost but still served by same network
- ▲ Coverage lost and no other service by same network

Analog service	1,828,999 persons
Digital service	3,294,516
Analog loss	109,342
Digital gain	1,574,859
Net gain	1,465,517