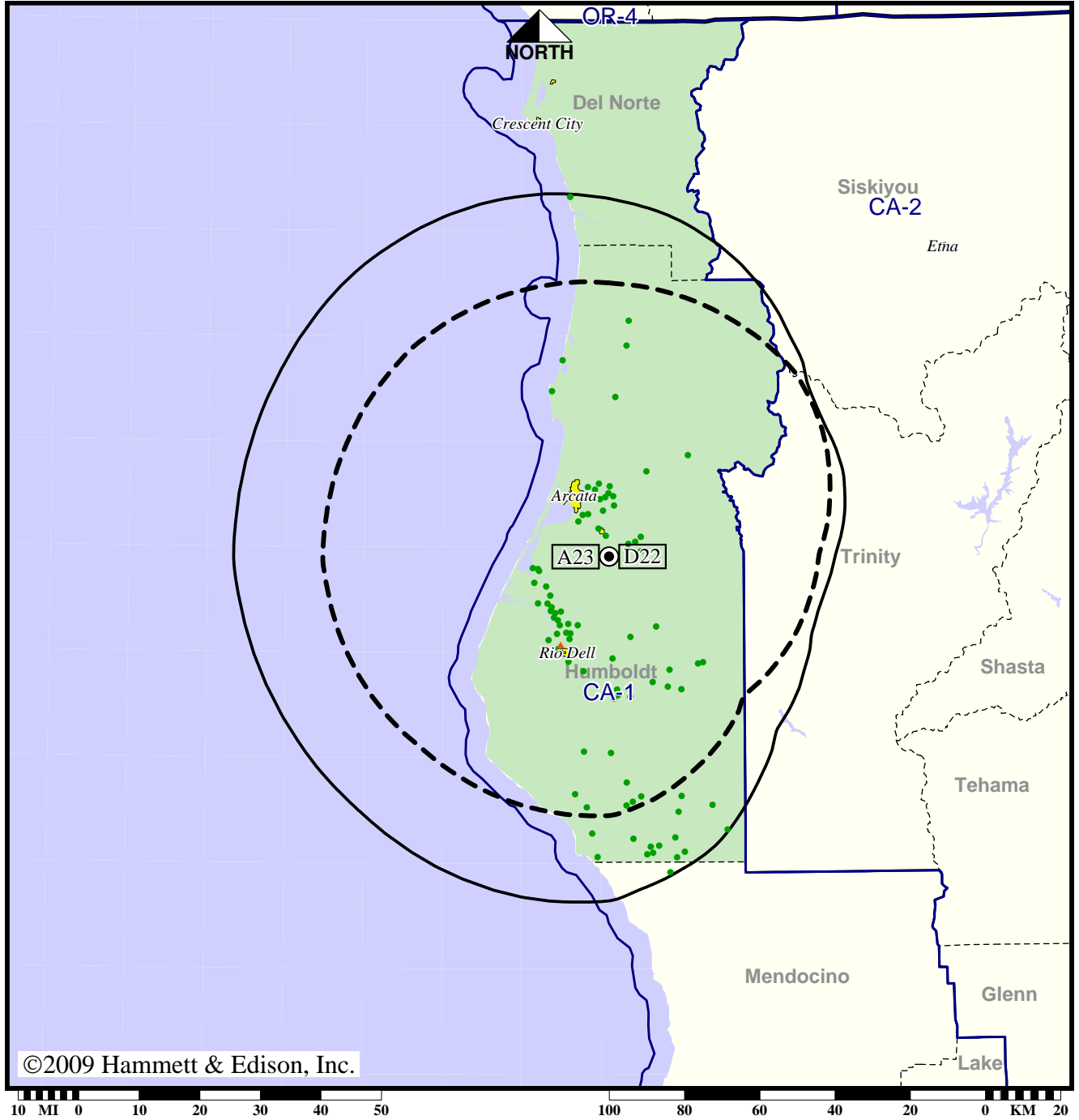


TV Station KAEF • Analog Channel 23, DTV Channel 22 • Arcata, CA

Expected Operation on June 13: Licensed

Digital License (solid): 45.0 kW ERP at 550 m HAAT, Network: ABC  
 vs. Analog (dashed): 141 kW ERP at 510 m HAAT, Network: ABC

Market: Eureka, CA



©2009 Hammett & Edison, Inc.

- Coverage gained after DTV transition
- No symbol = no change in coverage
- ▲ Coverage lost after DTV transition

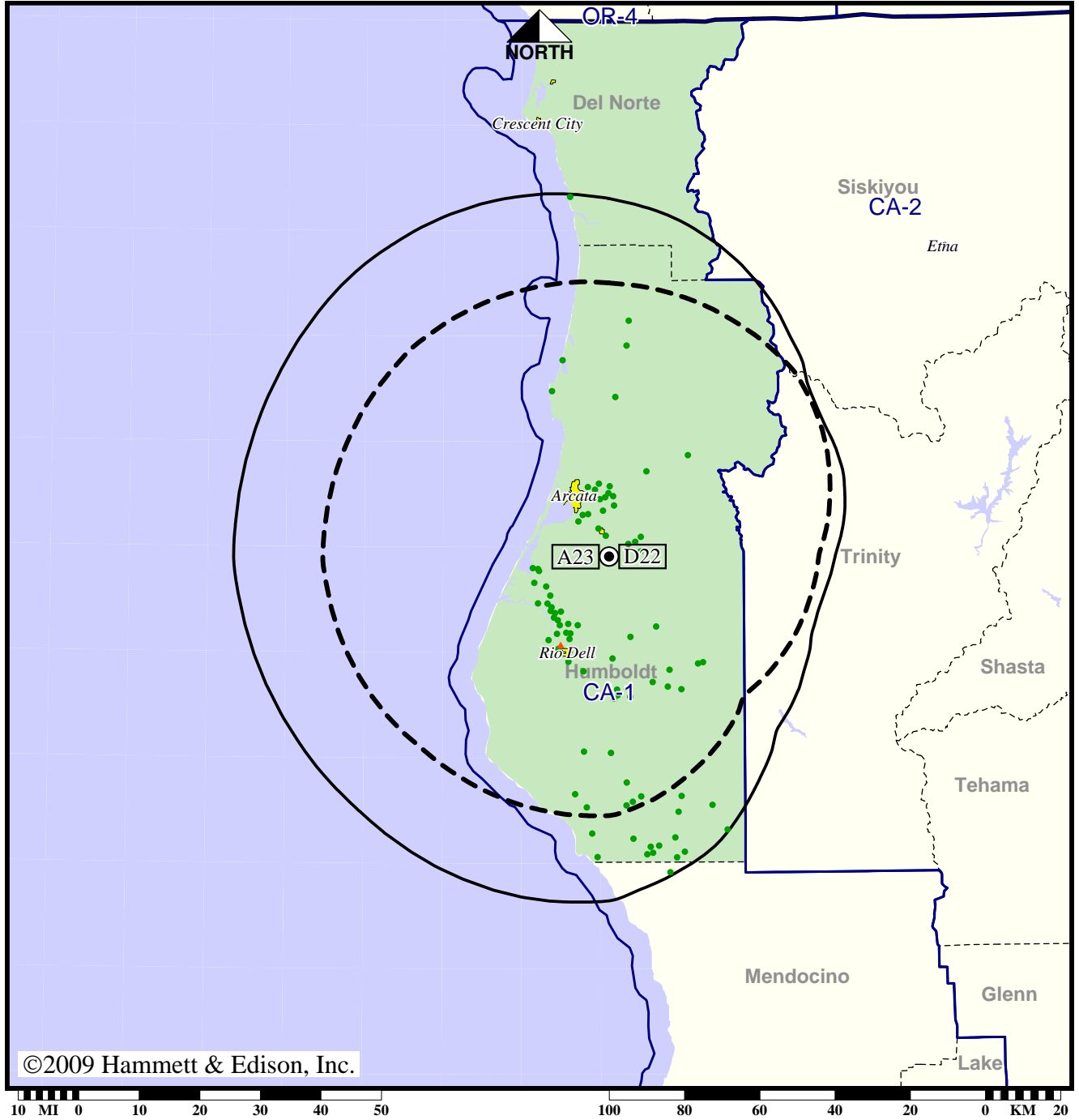
|                 |                |
|-----------------|----------------|
| Analog service  | 91,108 persons |
| Digital service | 107,680        |
| Analog loss     | 80             |
| Digital gain    | 16,652         |
| Net gain        | 16,572         |

TV Station KAEF • Analog Channel 23, DTV Channel 22 • Arcata, CA

Approved Post-Transition Operation: Licensed

Digital License (solid): 45.0 kW ERP at 550 m HAAT, Network: ABC  
 vs. Analog (dashed): 141 kW ERP at 510 m HAAT, Network: ABC

Market: Eureka, CA



©2009 Hammett & Edison, Inc.

- Coverage gained after DTV transition
- No symbol = no change in coverage
- ▲ Coverage lost after DTV transition

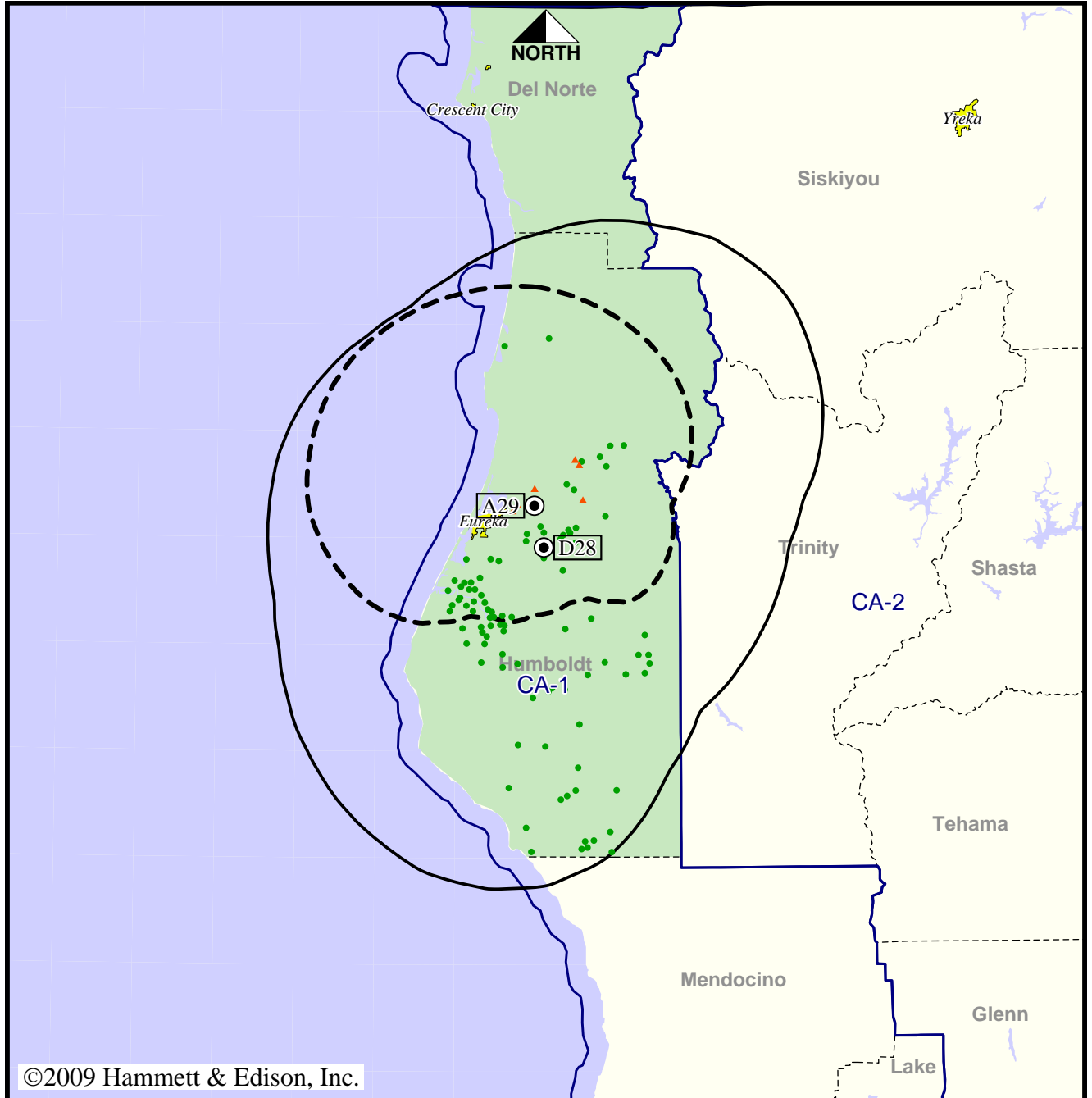
|                 |                |
|-----------------|----------------|
| Analog service  | 91,108 persons |
| Digital service | 107,680        |
| Analog loss     | 80             |
| Digital gain    | 16,652         |
| Net gain        | 16,572         |

**TV Station KBVU • Analog Channel 29, DTV Channel 28 • Eureka, CA**

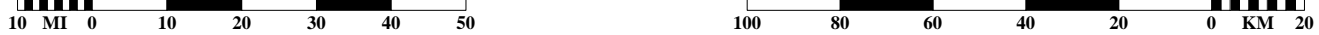
**Expected Operation on June 13: Granted Construction Permit**

**Digital CP (solid): 50.0 kW ERP at 513 m HAAT, Network: Fox  
vs. Analog (dashed): 66.1 kW ERP at 334 m HAAT, Network: Fox**

**Market: Eureka, CA**



©2009 Hammett & Edison, Inc.



- Coverage gained after DTV transition
- No symbol = no change in coverage
- ▲ Coverage lost after DTV transition

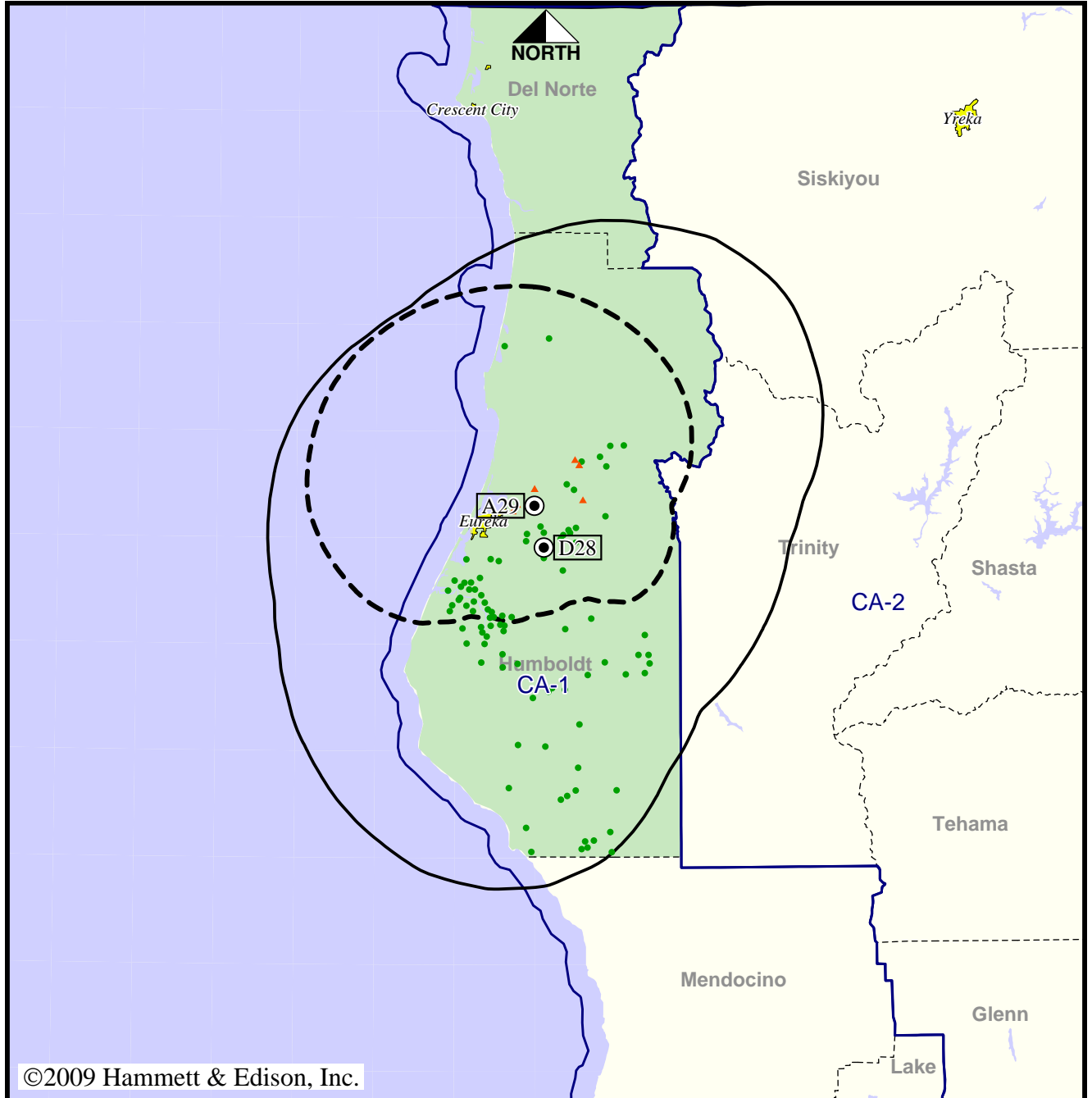
|                 |                |
|-----------------|----------------|
| Analog service  | 89,819 persons |
| Digital service | 101,189        |
| Analog loss     | 1,662          |
| Digital gain    | 13,032         |
| Net gain        | 11,370         |

TV Station KBVU • Analog Channel 29, DTV Channel 28 • Eureka, CA

Approved Post-Transition Operation: Granted Construction Permit

Digital CP (solid): 50.0 kW ERP at 513 m HAAT, Network: Fox  
 vs. Analog (dashed): 66.1 kW ERP at 334 m HAAT, Network: Fox

Market: Eureka, CA



©2009 Hammett & Edison, Inc.

- Coverage gained after DTV transition
- No symbol = no change in coverage
- ▲ Coverage lost after DTV transition

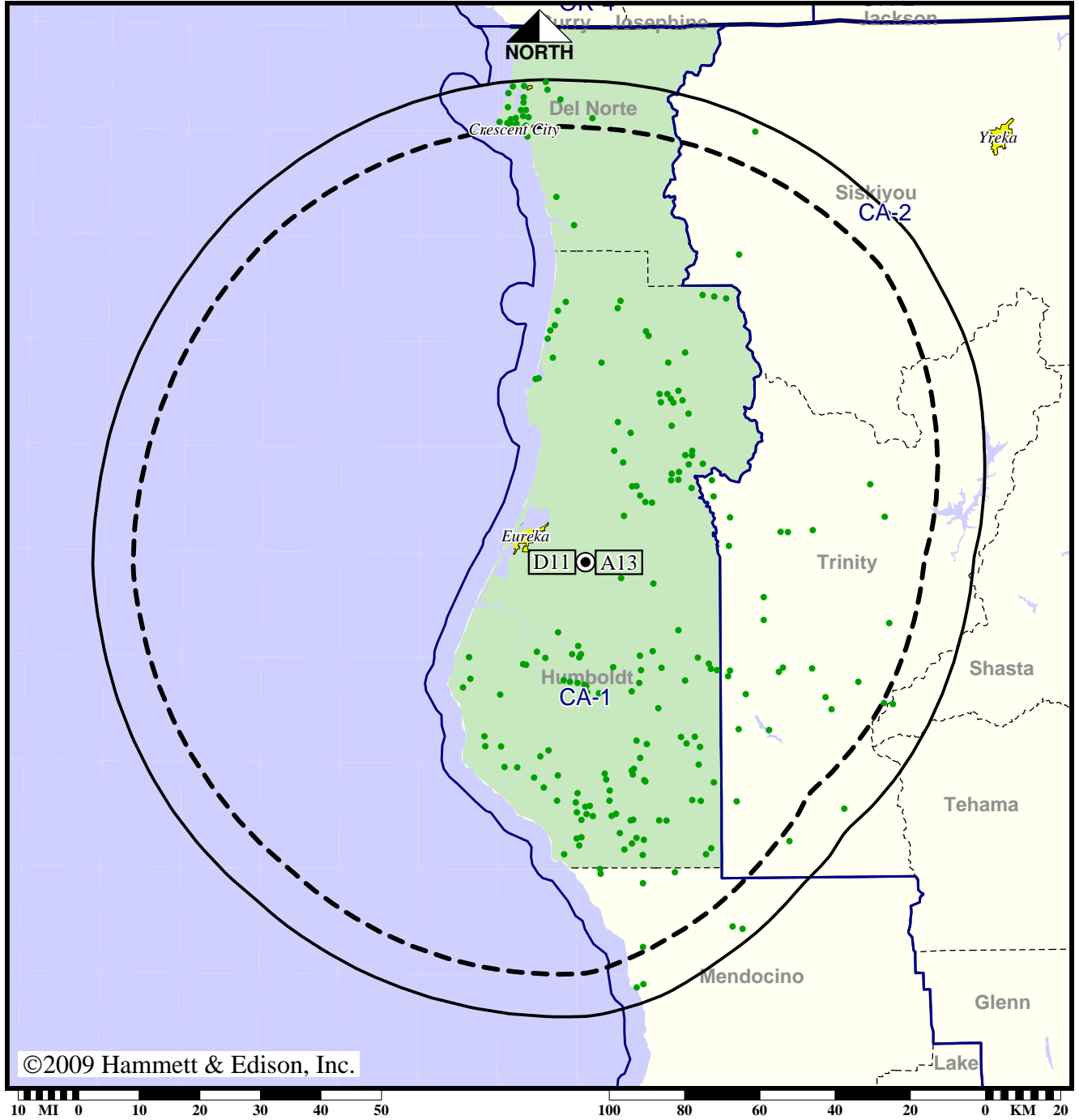
|                 |                |
|-----------------|----------------|
| Analog service  | 89,819 persons |
| Digital service | 101,189        |
| Analog loss     | 1,662          |
| Digital gain    | 13,032         |
| Net gain        | 11,370         |

TV Station KEET • Analog Channel 13, DTV Channel 11 • Eureka, CA

Expected Operation on June 13: Licensed

Digital License (solid): 38.4 kW ERP at 550 m HAAT, Network: PBS  
 vs. Analog (dashed): 182 kW ERP at 550 m HAAT, Network: PBS

Market: Eureka, CA



©2009 Hammett & Edison, Inc.

- Coverage gained after DTV transition
- No symbol = no change in coverage

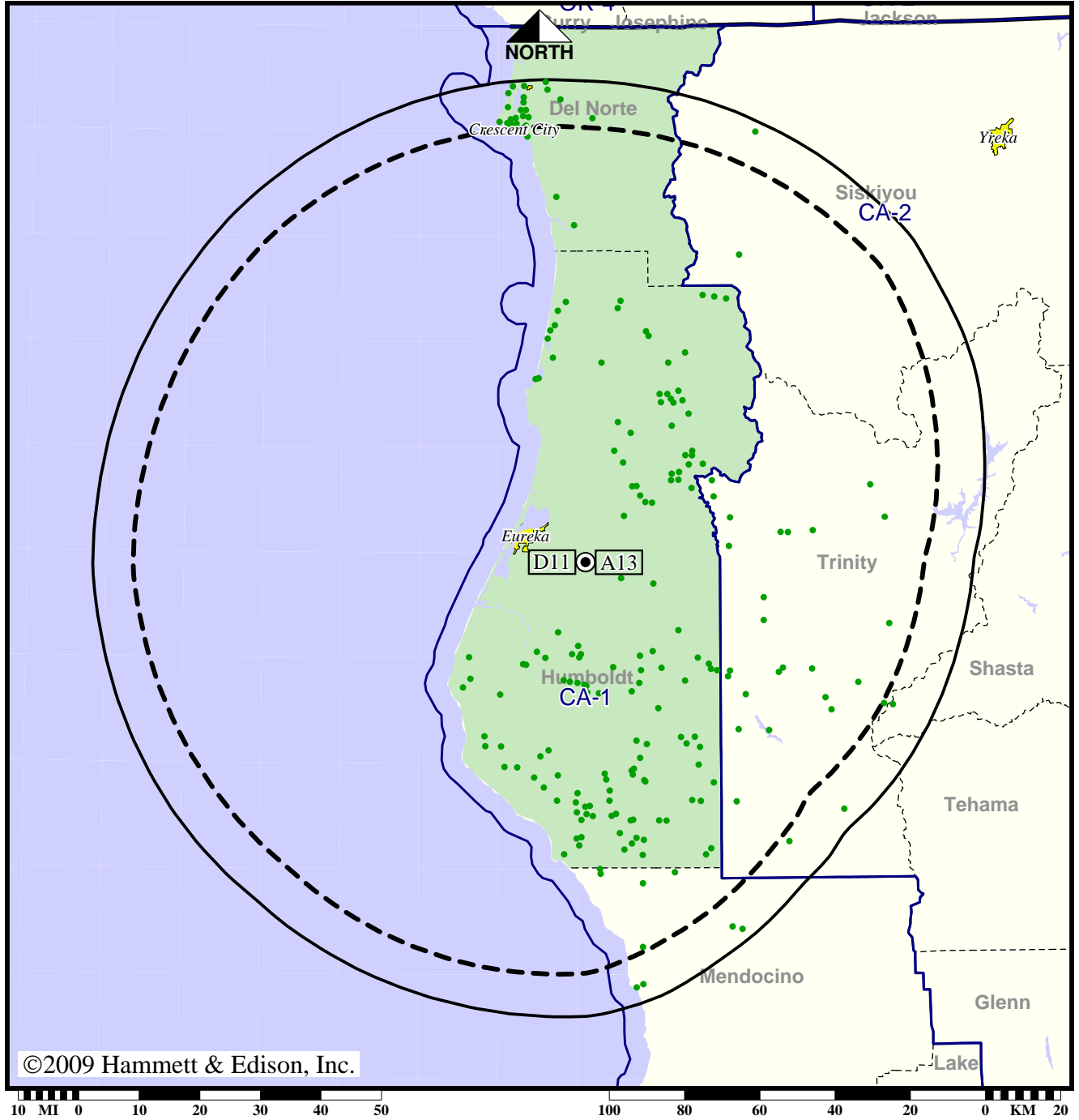
|                 |                 |
|-----------------|-----------------|
| Analog service  | 114,003 persons |
| Digital service | 136,751         |
| Analog loss     | 0               |
| Digital gain    | 22,748          |
| Net gain        | 22,748          |

TV Station KEET • Analog Channel 13, DTV Channel 11 • Eureka, CA

Approved Post-Transition Operation: Licensed

Digital License (solid): 38.4 kW ERP at 550 m HAAT, Network: PBS  
 vs. Analog (dashed): 182 kW ERP at 550 m HAAT, Network: PBS

Market: Eureka, CA



©2009 Hammett & Edison, Inc.

- Coverage gained after DTV transition
- No symbol = no change in coverage

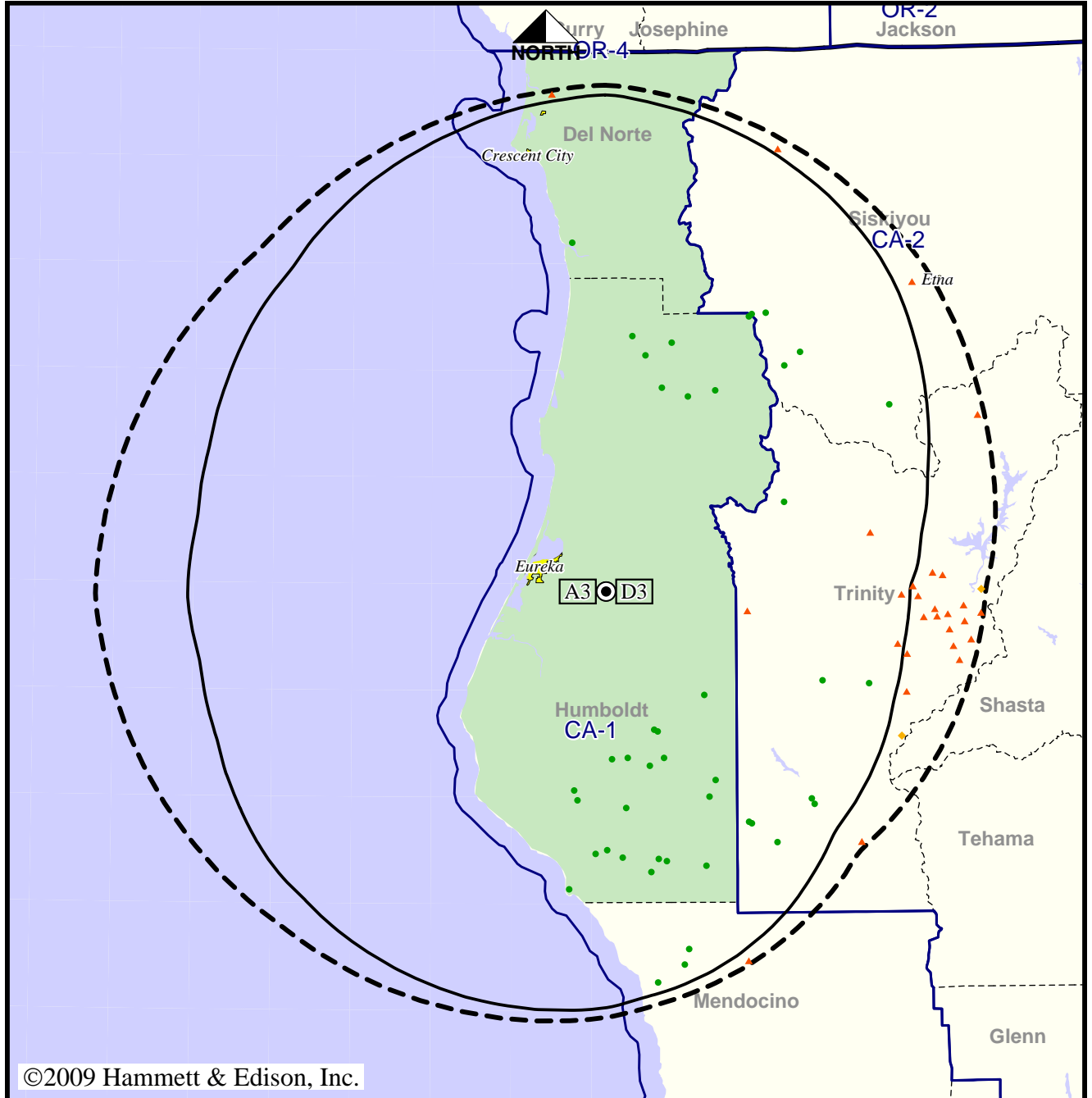
|                 |                 |
|-----------------|-----------------|
| Analog service  | 114,003 persons |
| Digital service | 136,751         |
| Analog loss     | 0               |
| Digital gain    | 22,748          |
| Net gain        | 22,748          |

Station KIEM-TV • Analog Channel 3, DTV Channel 3 • Eureka, CA

Expected Operation on June 13: Appendix B Facility

Digital Appendix B (solid): 8.39 kW ERP at 503 m HAAT, Network: NBC  
 vs. Analog (dashed): 100 kW ERP at 503 m HAAT, Network: NBC

Market: Eureka, CA



- Coverage gained after DTV transition
- No symbol = no change in coverage
- ◆ Coverage lost but still served by same network
- ▲ Coverage lost and no other service by same network

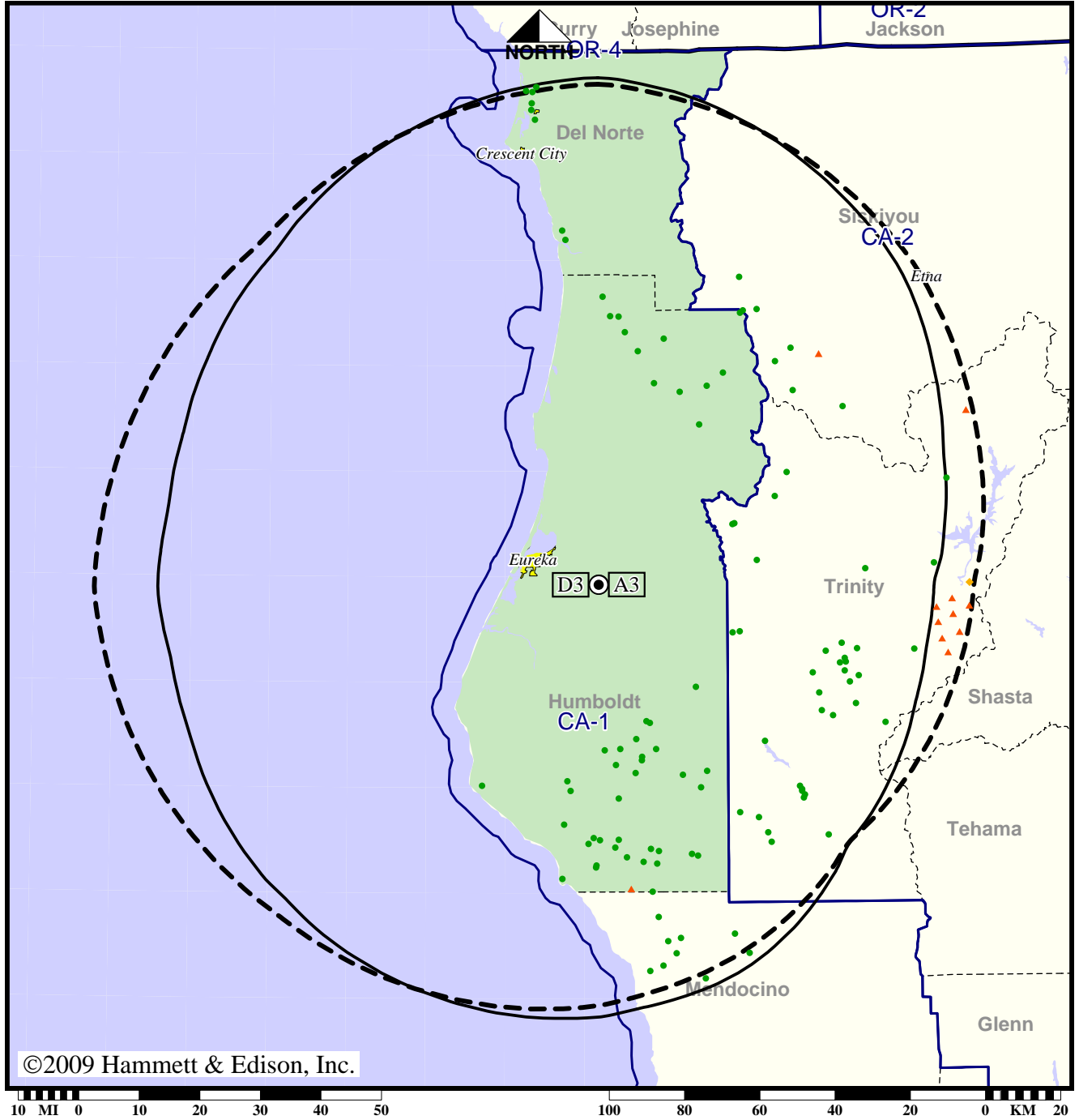
|                 |                 |
|-----------------|-----------------|
| Analog service  | 143,692 persons |
| Digital service | 144,044         |
| Analog loss     | 982             |
| Digital gain    | 1,334           |
| Net gain        | 352             |

Station KIEM-TV • Analog Channel 3, DTV Channel 3 • Eureka, CA

Approved Post-Transition Operation: Granted Construction Permit

Digital CP (solid): 12.5 kW ERP at 485 m HAAT, Network: NBC  
 vs. Analog (dashed): 100 kW ERP at 503 m HAAT, Network: NBC

Market: Eureka, CA



©2009 Hammett & Edison, Inc.

- Coverage gained after DTV transition
- No symbol = no change in coverage
- ◆ Coverage lost but still served by same network
- ▲ Coverage lost and no other service by same network

|                 |                 |
|-----------------|-----------------|
| Analog service  | 143,692 persons |
| Digital service | 148,422         |
| Analog loss     | 448             |
| Digital gain    | 5,178           |
| Net gain        | 4,730           |

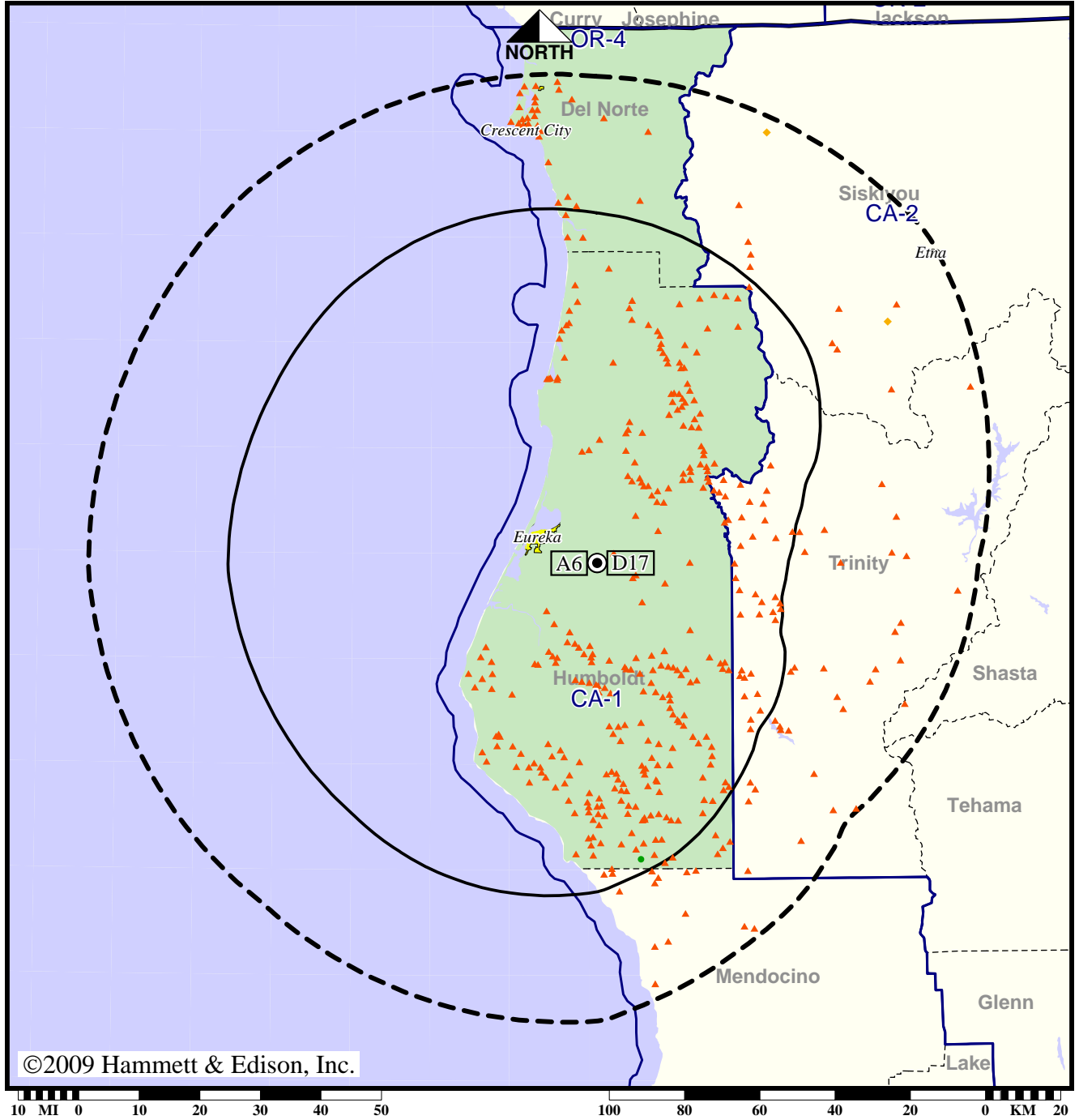


TV Station KVIQ • Analog Channel 6, DTV Channel 17 • Eureka, CA

Expected Operation on June 13: Licensed

Digital License (solid): 30.0 kW ERP at 550 m HAAT, Network: CBS  
 vs. Analog (dashed): 100 kW ERP at 530 m HAAT, Network: CBS

Market: Eureka, CA



©2009 Hammett & Edison, Inc.

- Coverage gained after DTV transition
- No symbol = no change in coverage
- ◆ Coverage lost but still served by same network
- ▲ Coverage lost and no other service by same network

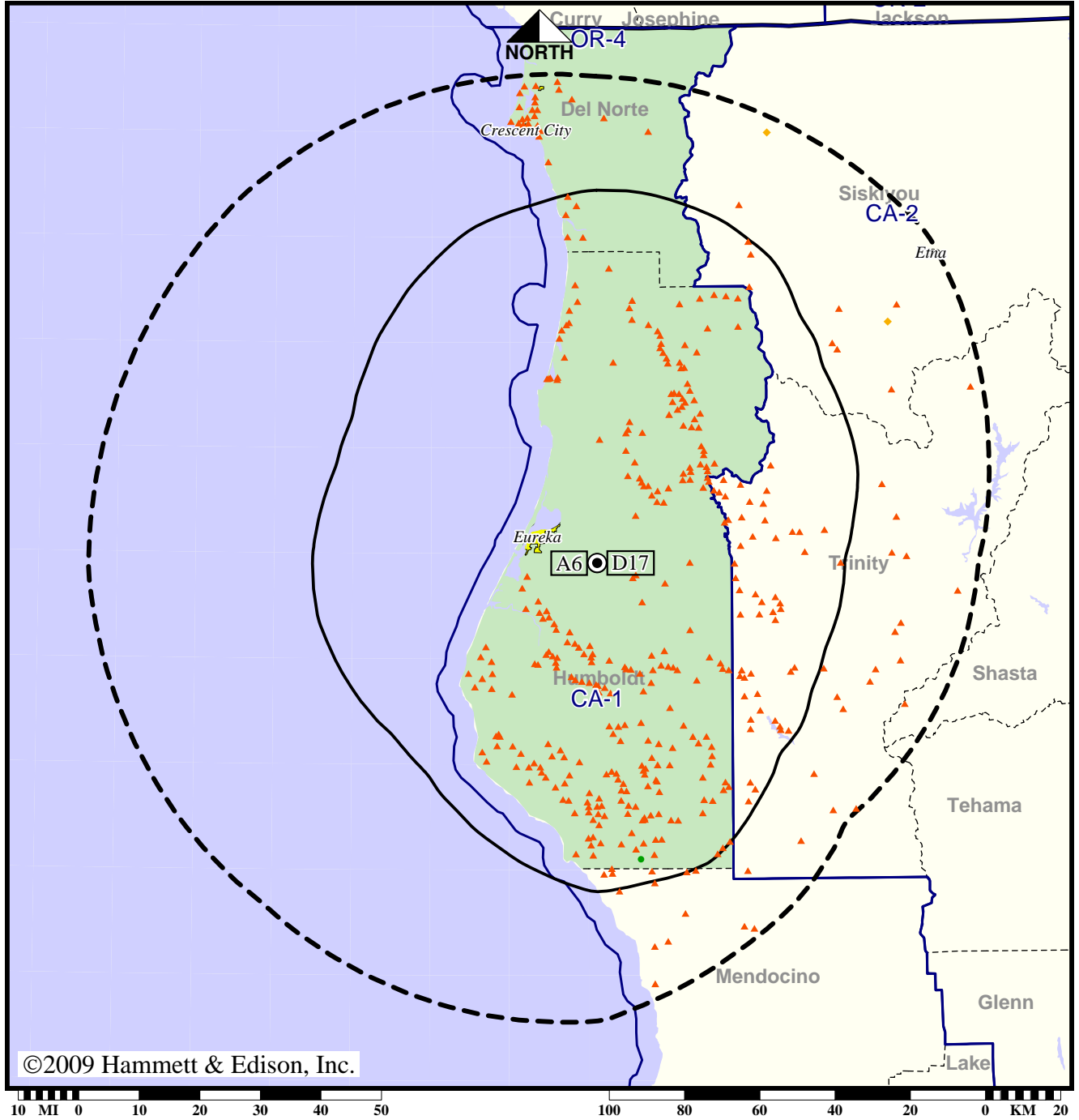
|                 |                 |
|-----------------|-----------------|
| Analog service  | 140,430 persons |
| Digital service | 107,213         |
| Analog loss     | 33,219          |
| Digital gain    | 2               |
| Net gain        | -33,217         |

TV Station KVIQ • Analog Channel 6, DTV Channel 17 • Eureka, CA

Approved Post-Transition Operation: Granted Construction Permit

Digital CP (solid): 48.7 kW ERP at 546 m HAAT, Network: CBS  
 vs. Analog (dashed): 100 kW ERP at 530 m HAAT, Network: CBS

Market: Eureka, CA



©2009 Hammett & Edison, Inc.

- Coverage gained after DTV transition
- No symbol = no change in coverage
- ◆ Coverage lost but still served by same network
- ▲ Coverage lost and no other service by same network

|                 |                 |
|-----------------|-----------------|
| Analog service  | 140,430 persons |
| Digital service | 103,613         |
| Analog loss     | 36,819          |
| Digital gain    | 2               |
| Net gain        | -36,817         |