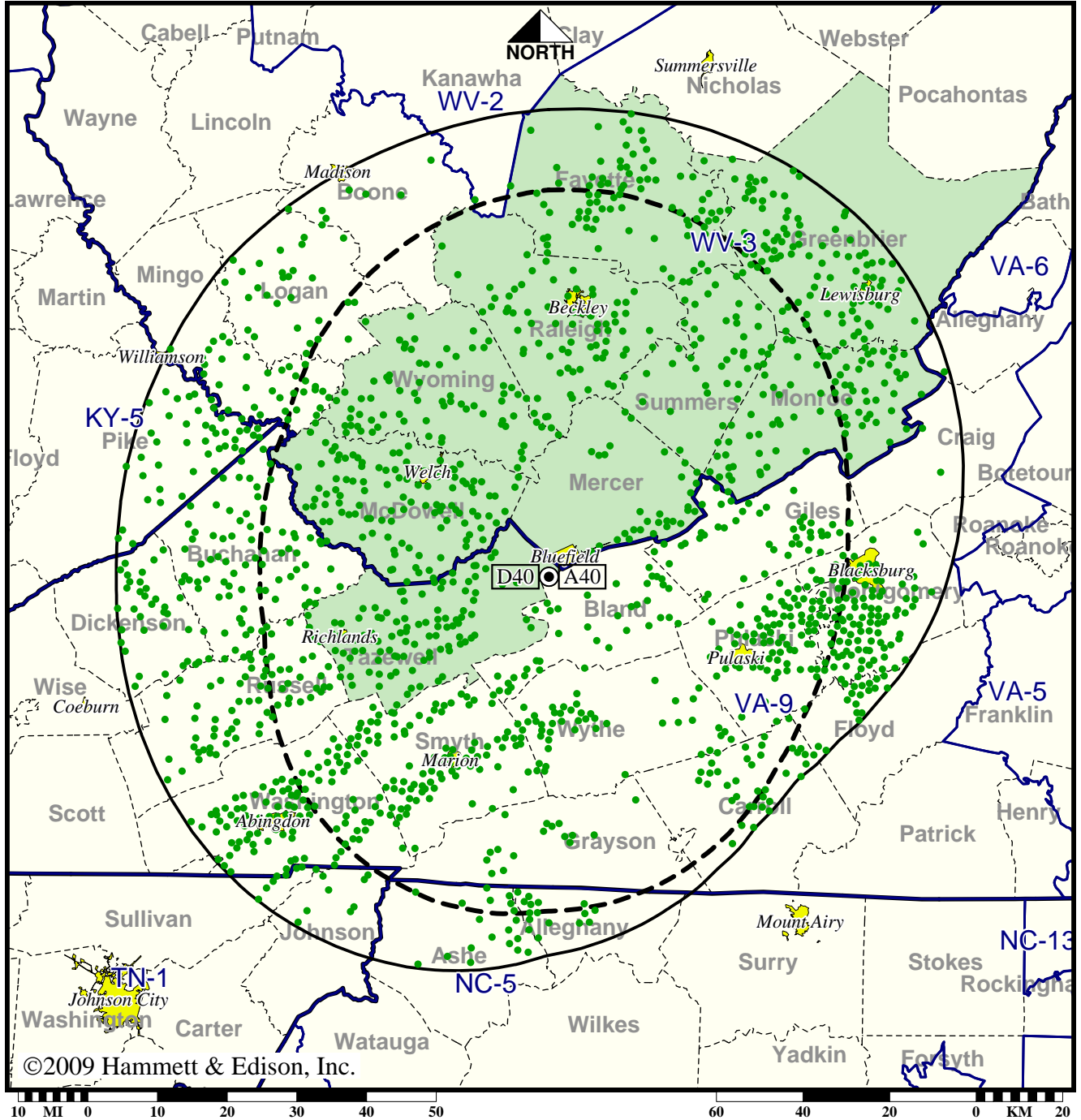


TV Station WLFB • Analog Channel 40, DTV Channel 40 • Bluefield, WV

Expected Operation on June 13: Appendix B Facility

Digital Appendix B (solid): 1000 kW ERP at 386 m HAAT
 vs. Analog (dashed): 2880 kW ERP at 391 m HAAT

Market: Bluefield-Beckley-Oak Hill, WV



©2009 Hammett & Edison, Inc.

● Coverage gained after DTV transition
 No symbol = no change in coverage

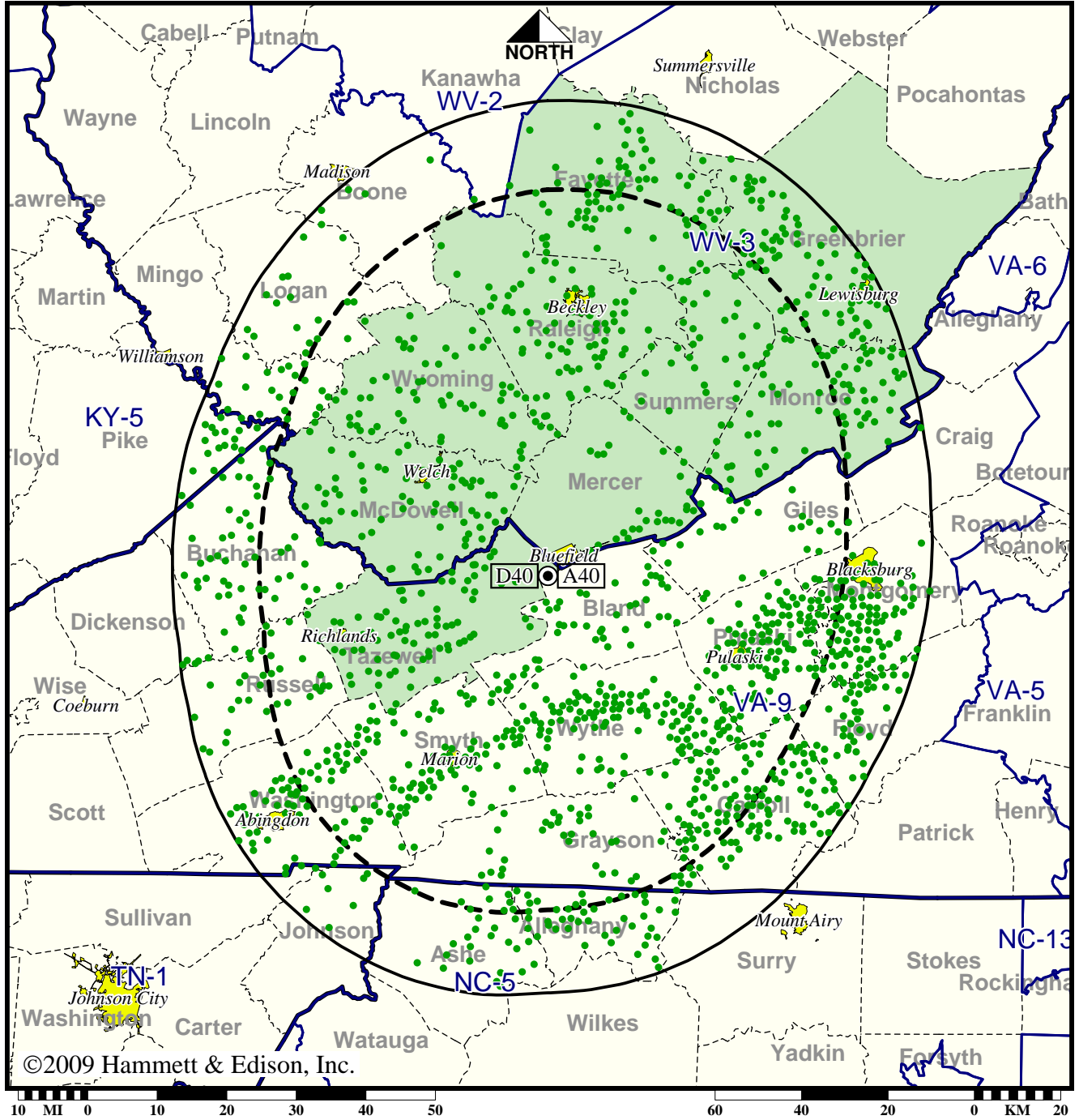
Analog service	174,340 persons
Digital service	506,120
Analog loss	0
Digital gain	331,780
Net gain	331,780

TV Station WLFB • Analog Channel 40, DTV Channel 40 • Bluefield, WV

Approved Post-Transition Operation: Granted Construction Permit

Digital CP (solid): 1000 kW ERP at 391 m HAAT
vs. Analog (dashed): 2880 kW ERP at 391 m HAAT

Market: Bluefield-Beckley-Oak Hill, WV



● Coverage gained after DTV transition
No symbol = no change in coverage

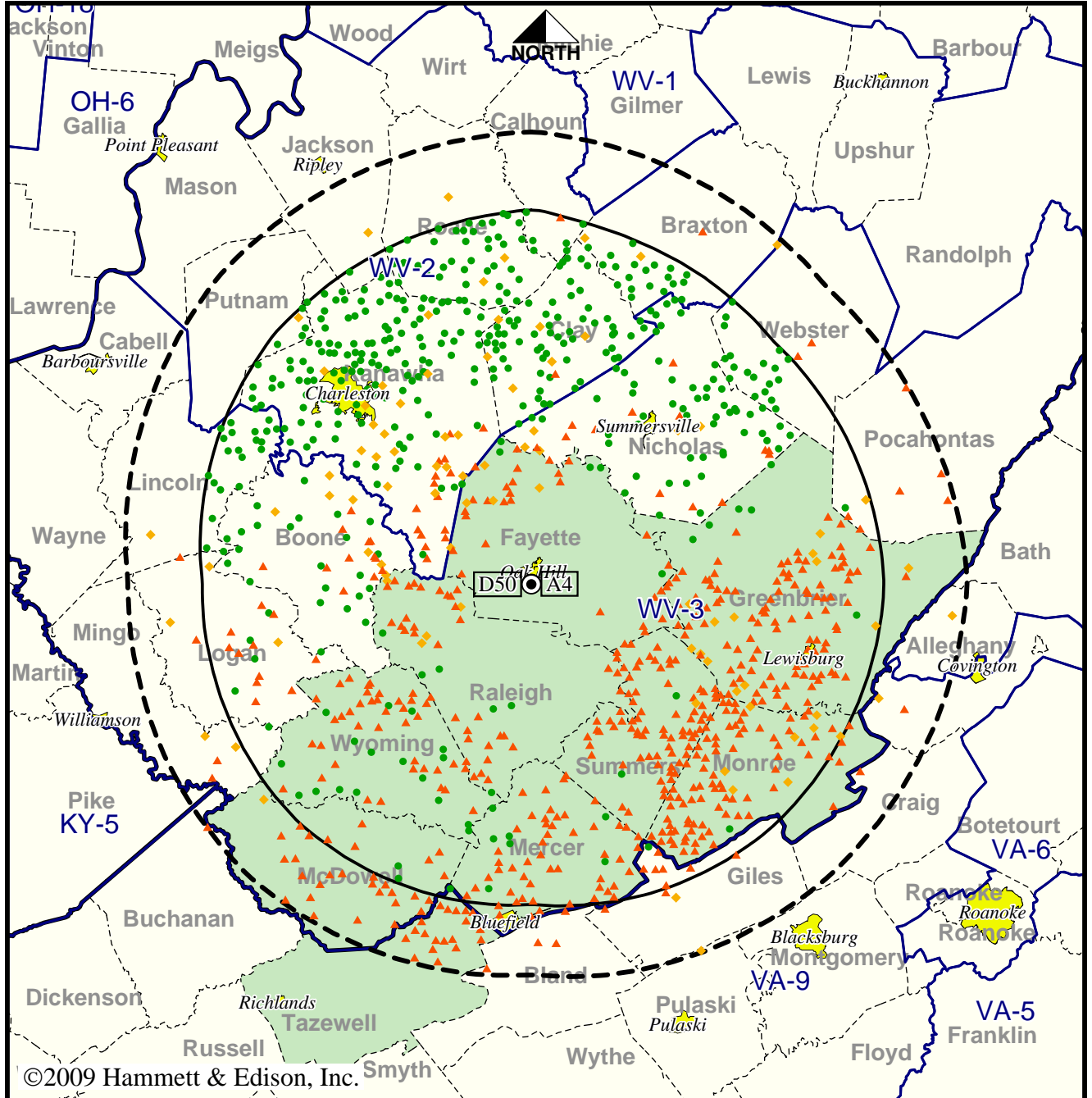
Analog service	174,340 persons
Digital service	493,254
Analog loss	0
Digital gain	318,914
Net gain	318,914

Station WOAY-TV • Analog Channel 4, DTV Channel 50 • Oak Hill, WV

Expected Operation on June 13: Licensed

Digital License (solid): 600 kW ERP at 200 m HAAT, Network: ABC
 vs. Analog (dashed): 100 kW ERP at 226 m HAAT, Network: ABC

Market: Bluefield-Beckley-Oak Hill, WV



©2009 Hammett & Edison, Inc.



- Coverage gained after DTV transition
- No symbol = no change in coverage
- ◆ Coverage lost but still served by same network
- ▲ Coverage lost and no other service by same network

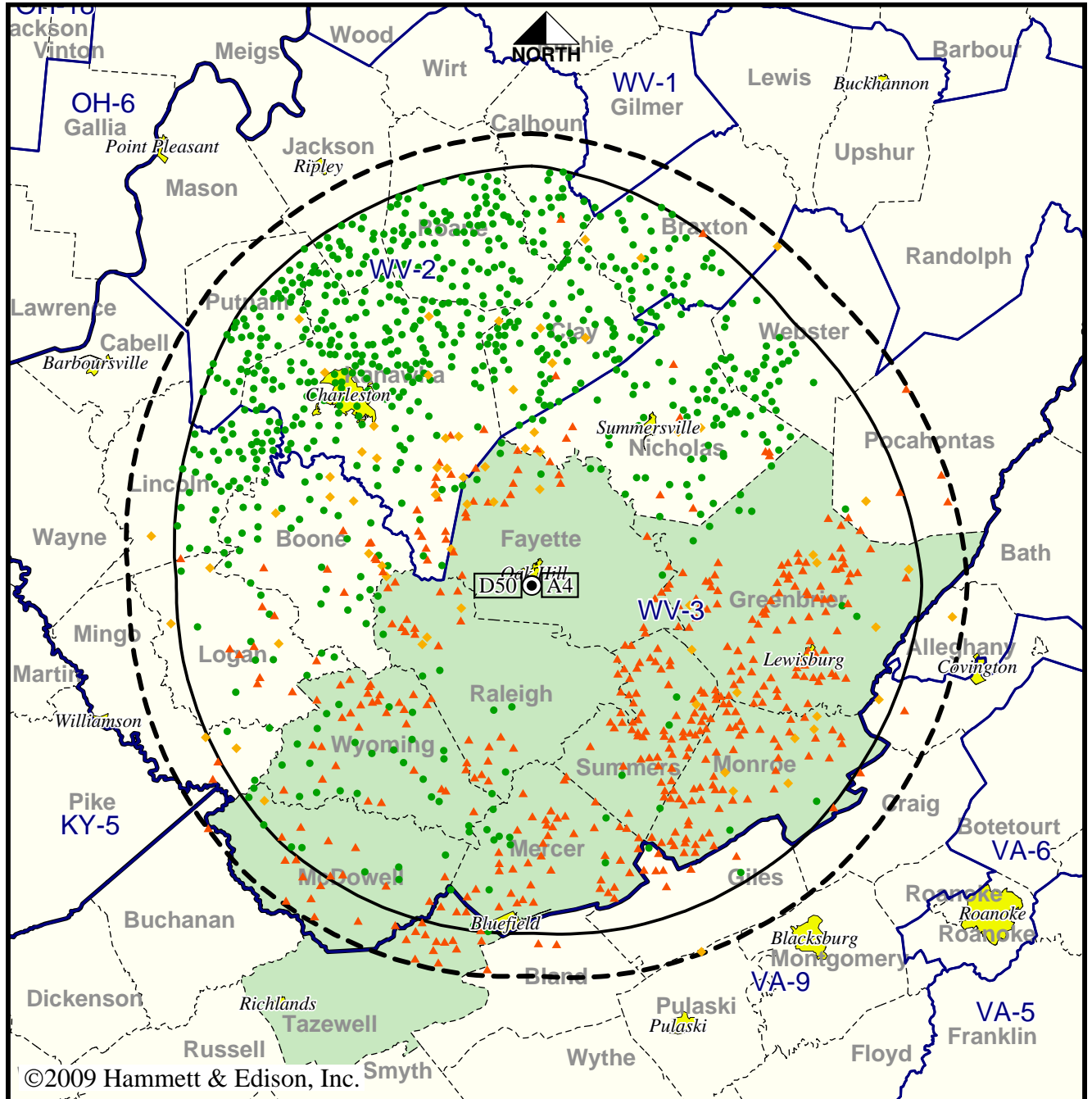
Analog service	289,283 persons
Digital service	270,479
Analog loss	91,985
Digital gain	73,181
Net gain	-18,804

Station WOAY-TV • Analog Channel 4, DTV Channel 50 • Oak Hill, WV

Approved Post-Transition Operation: Granted Construction Permit

Digital CP (solid): 1000 kW ERP at 237 m HAAT, Network: ABC
 vs. Analog (dashed): 100 kW ERP at 226 m HAAT, Network: ABC

Market: Bluefield-Beckley-Oak Hill, WV



©2009 Hammett & Edison, Inc.



- Coverage gained after DTV transition
- No symbol = no change in coverage
- ◆ Coverage lost but still served by same network
- ▲ Coverage lost and no other service by same network

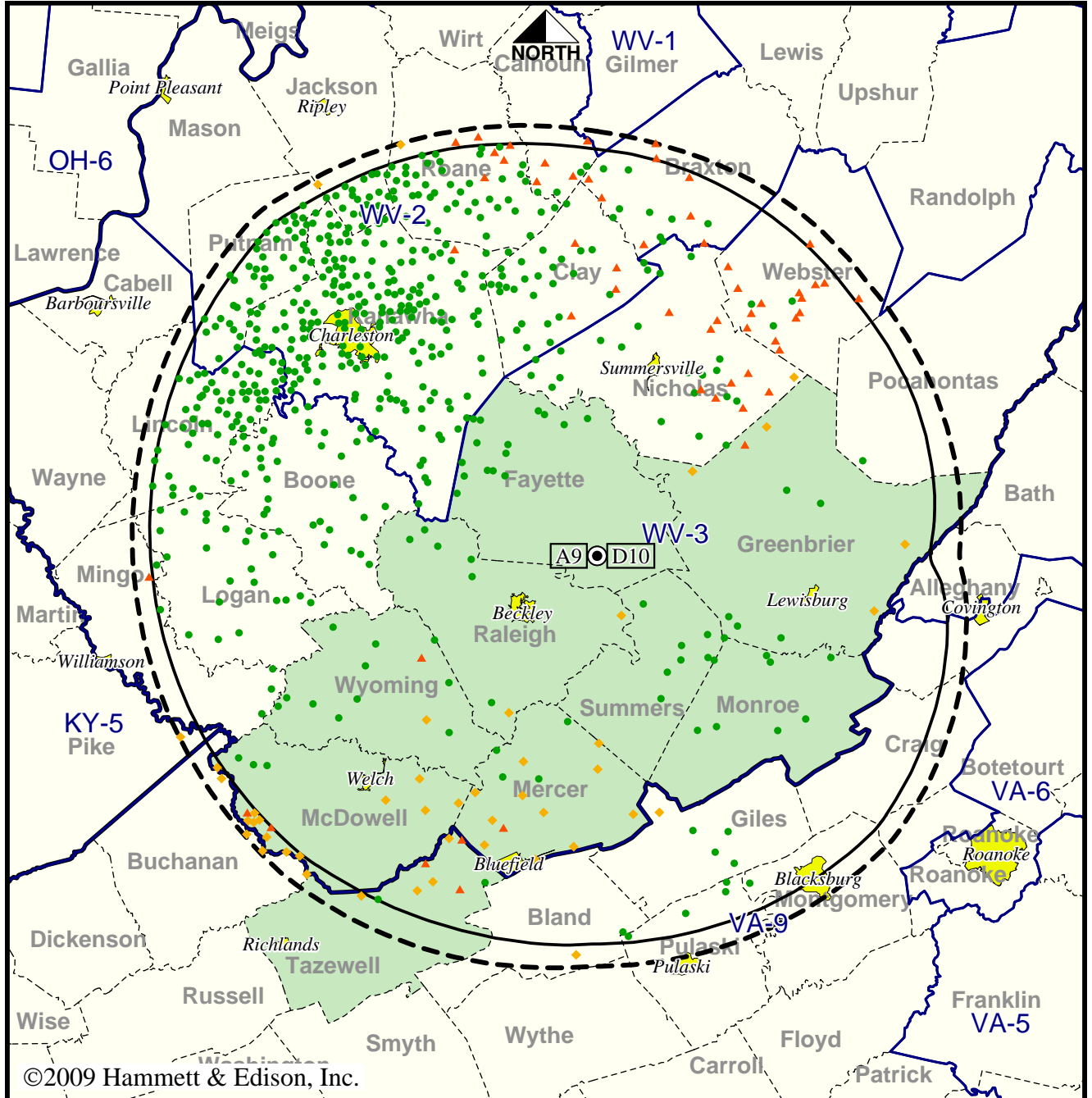
Analog service	289,283 persons
Digital service	355,212
Analog loss	69,099
Digital gain	135,028
Net gain	65,929

Station WSWP-TV • Analog Channel 9, DTV Channel 10 • Grandview, WV

Expected Operation on June 13: Special Temporary Authorization

Digital STA (solid): 15.8 kW ERP at 282 m HAAT, Network: PBS
 vs. Analog (dashed): 316 kW ERP at 305 m HAAT, Network: PBS

Market: Bluefield-Beckley-Oak Hill, WV



©2009 Hammett & Edison, Inc.

- Coverage gained after DTV transition
- No symbol = no change in coverage
- ◆ Coverage lost but still served by same network
- ▲ Coverage lost and no other service by same network

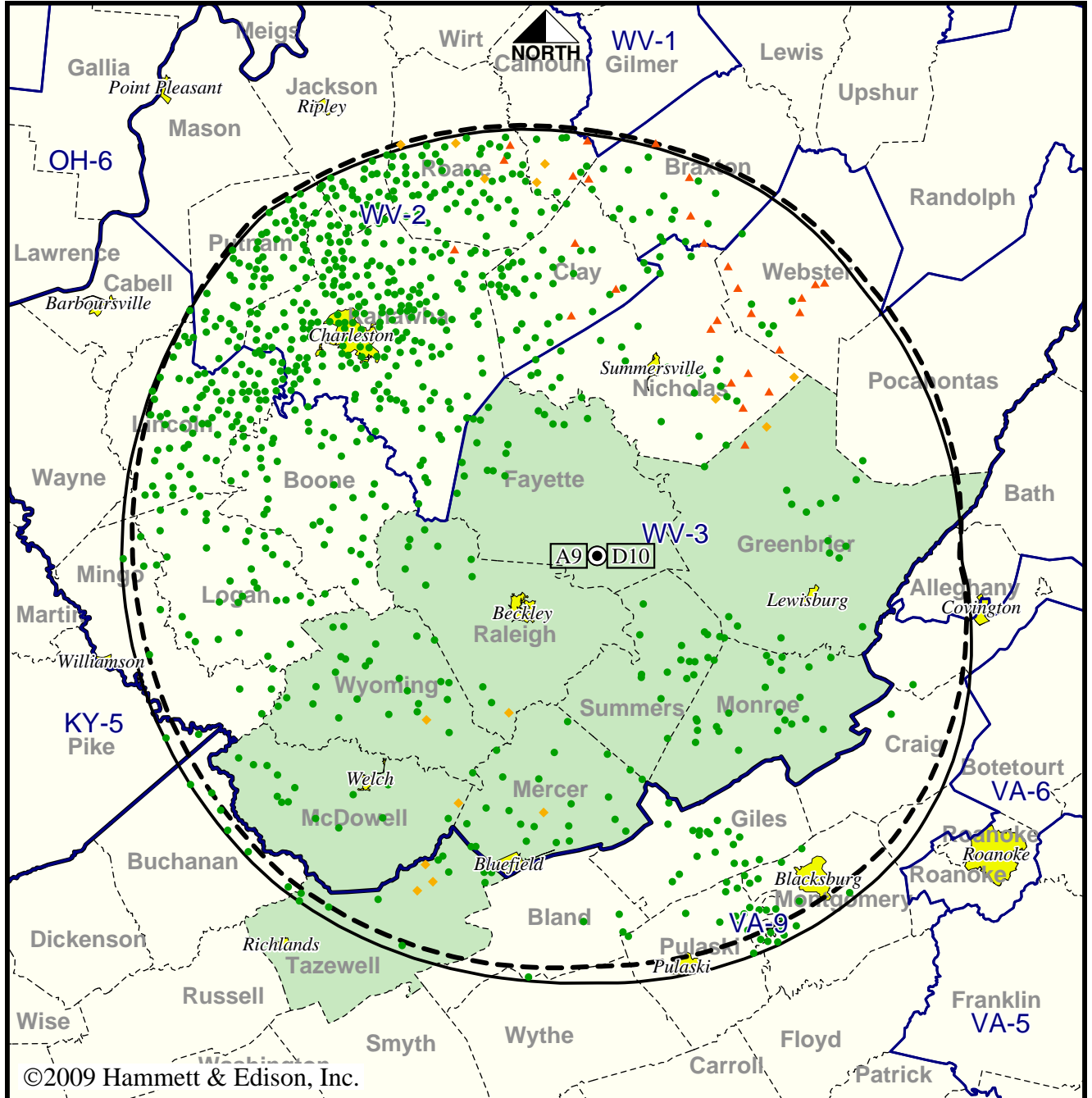
Analog service	290,476 persons
Digital service	413,796
Analog loss	11,463
Digital gain	134,783
Net gain	123,320

Station WSWP-TV • Analog Channel 9, DTV Channel 10 • Grandview, WV

Approved Post-Transition Operation: Granted Construction Permit

Digital CP (solid): 24.0 kW ERP at 318 m HAAT, Network: PBS
 vs. Analog (dashed): 316 kW ERP at 305 m HAAT, Network: PBS

Market: Bluefield-Beckley-Oak Hill, WV



©2009 Hammett & Edison, Inc.



- Coverage gained after DTV transition
- No symbol = no change in coverage
- ◆ Coverage lost but still served by same network
- ▲ Coverage lost and no other service by same network

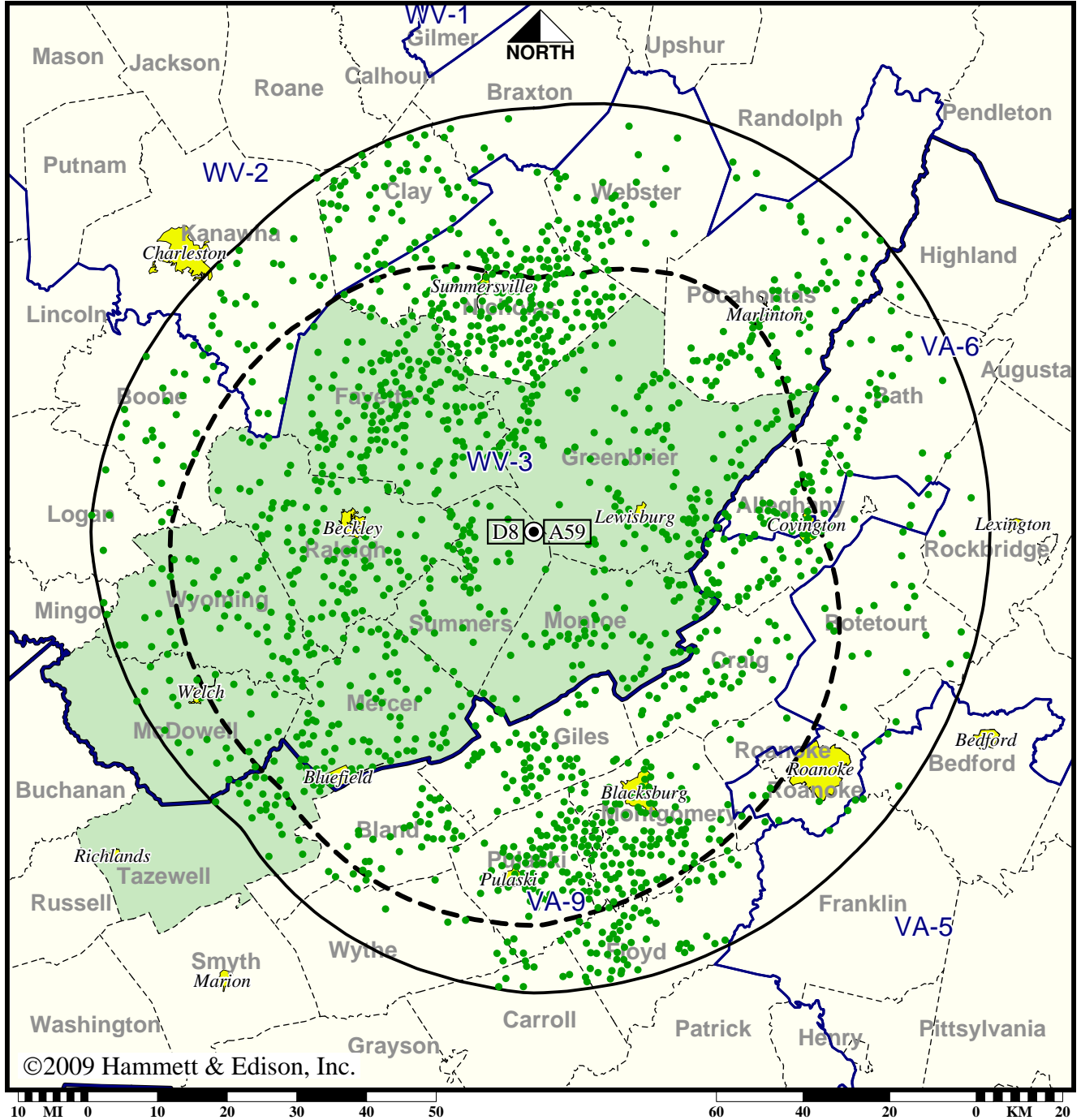
Analog service	290,476 persons
Digital service	474,588
Analog loss	4,746
Digital gain	188,858
Net gain	184,112

Station WVNS-TV • Analog Channel 59, DTV Channel 8 • Lewisburg, WV

Expected Operation on June 13: Granted Construction Permit

Digital CP (solid): 3.68 kW ERP at 577 m HAAT, Network: CBS
 vs. Analog (dashed): 1910 kW ERP at 568 m HAAT, Network: CBS

Market: Bluefield-Beckley-Oak Hill, WV



● Coverage gained after DTV transition
 No symbol = no change in coverage

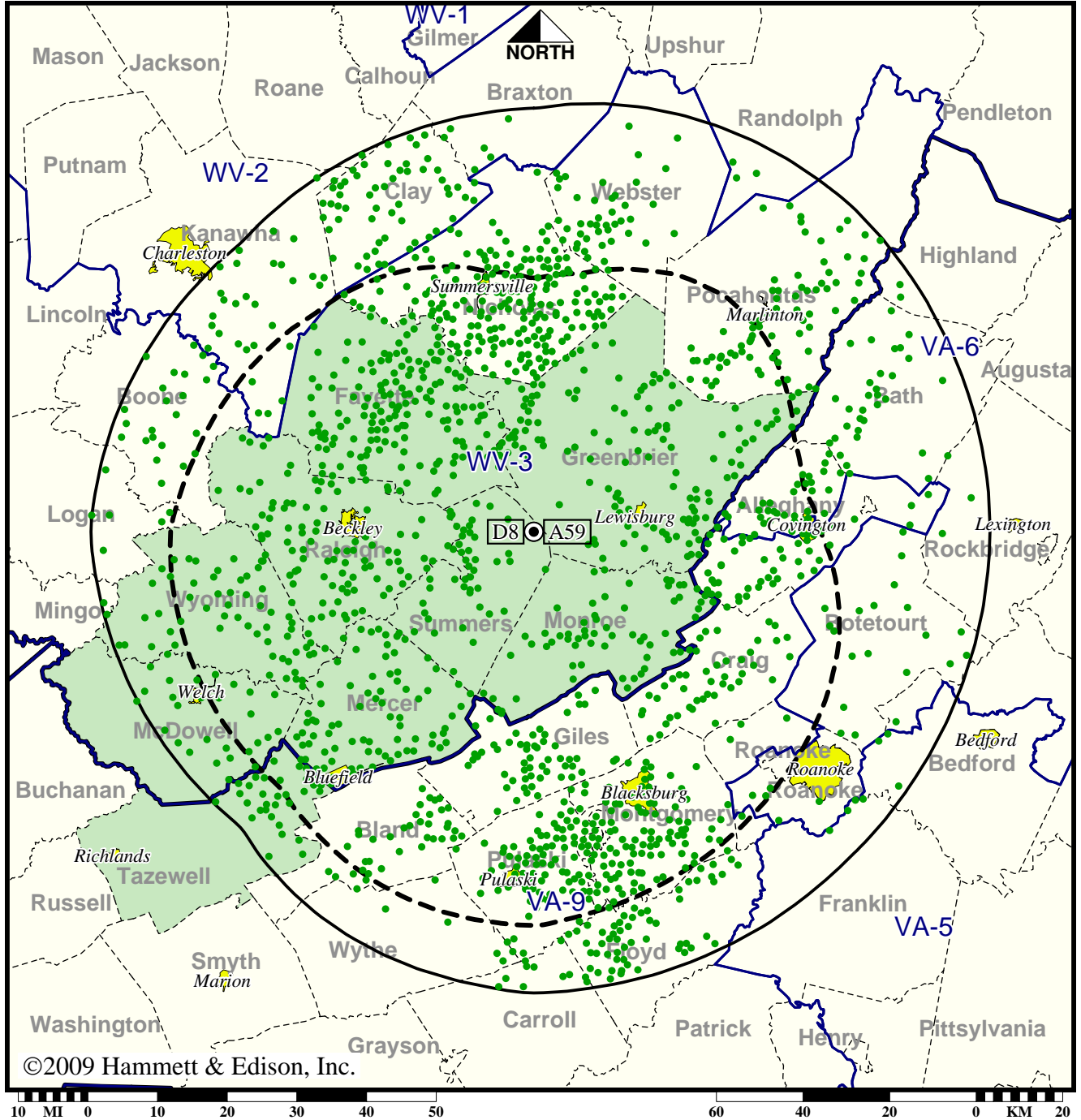
Analog service	160,748 persons
Digital service	449,146
Analog loss	0
Digital gain	288,398
Net gain	288,398

Station WVNS-TV • Analog Channel 59, DTV Channel 8 • Lewisburg, WV

Approved Post-Transition Operation: Granted Construction Permit

Digital CP (solid): 3.68 kW ERP at 577 m HAAT, Network: CBS
 vs. Analog (dashed): 1910 kW ERP at 568 m HAAT, Network: CBS

Market: Bluefield-Beckley-Oak Hill, WV



● Coverage gained after DTV transition
 No symbol = no change in coverage

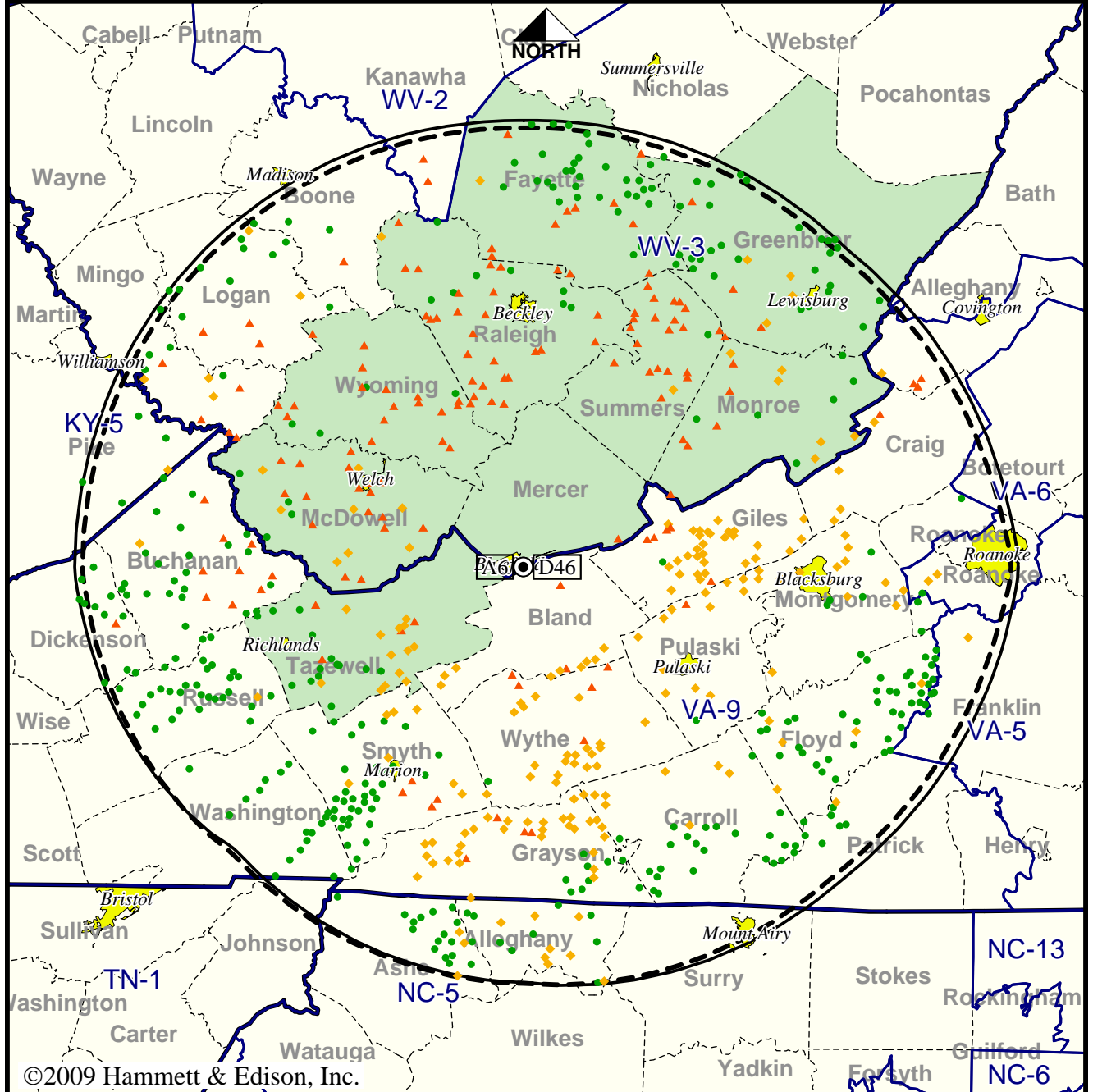
Analog service	160,748 persons
Digital service	447,604
Analog loss	0
Digital gain	286,856
Net gain	286,856

TV Station WVVA • Analog Channel 6, DTV Channel 46 • Bluefield, WV

Expected Operation on June 13: Granted Construction Permit

Digital CP (solid): 1000 kW ERP at 372 m HAAT, Network: NBC
 vs. Analog (dashed): 50.1 kW ERP at 372 m HAAT, Network: NBC

Market: Bluefield-Beckley-Oak Hill, WV



- Coverage gained after DTV transition
- No symbol = no change in coverage
- ◆ Coverage lost but still served by same network
- ▲ Coverage lost and no other service by same network

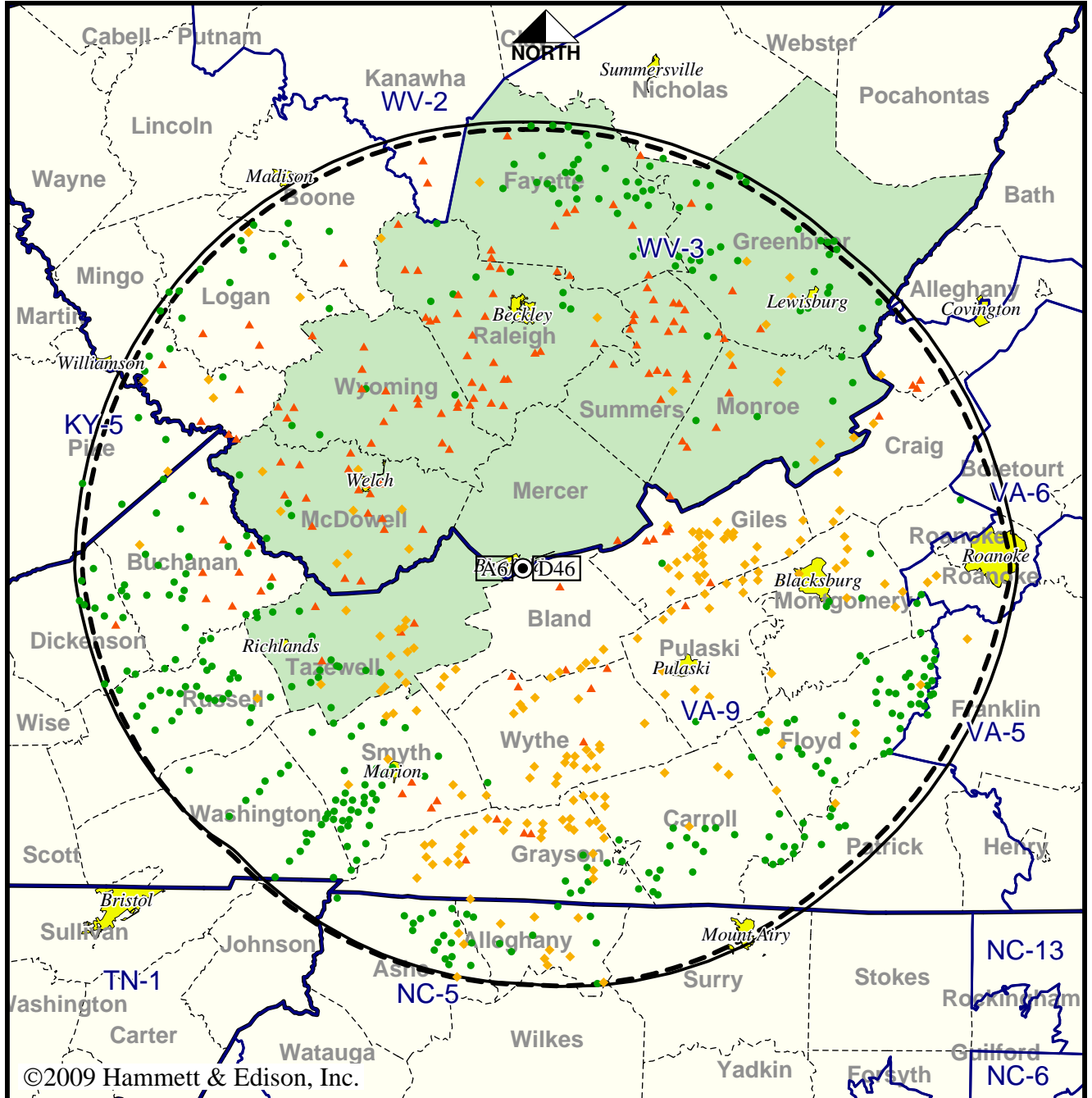
Analog service	530,757 persons
Digital service	531,113
Analog loss	41,921
Digital gain	42,277
Net gain	356

TV Station WVVA • Analog Channel 6, DTV Channel 46 • Bluefield, WV

Approved Post-Transition Operation: Granted Construction Permit

Digital CP (solid): 1000 kW ERP at 372 m HAAT, Network: NBC
 vs. Analog (dashed): 50.1 kW ERP at 372 m HAAT, Network: NBC

Market: Bluefield-Beckley-Oak Hill, WV



- Coverage gained after DTV transition
- No symbol = no change in coverage
- ◆ Coverage lost but still served by same network
- ▲ Coverage lost and no other service by same network

Analog service	530,757 persons
Digital service	531,113
Analog loss	41,921
Digital gain	42,277
Net gain	356