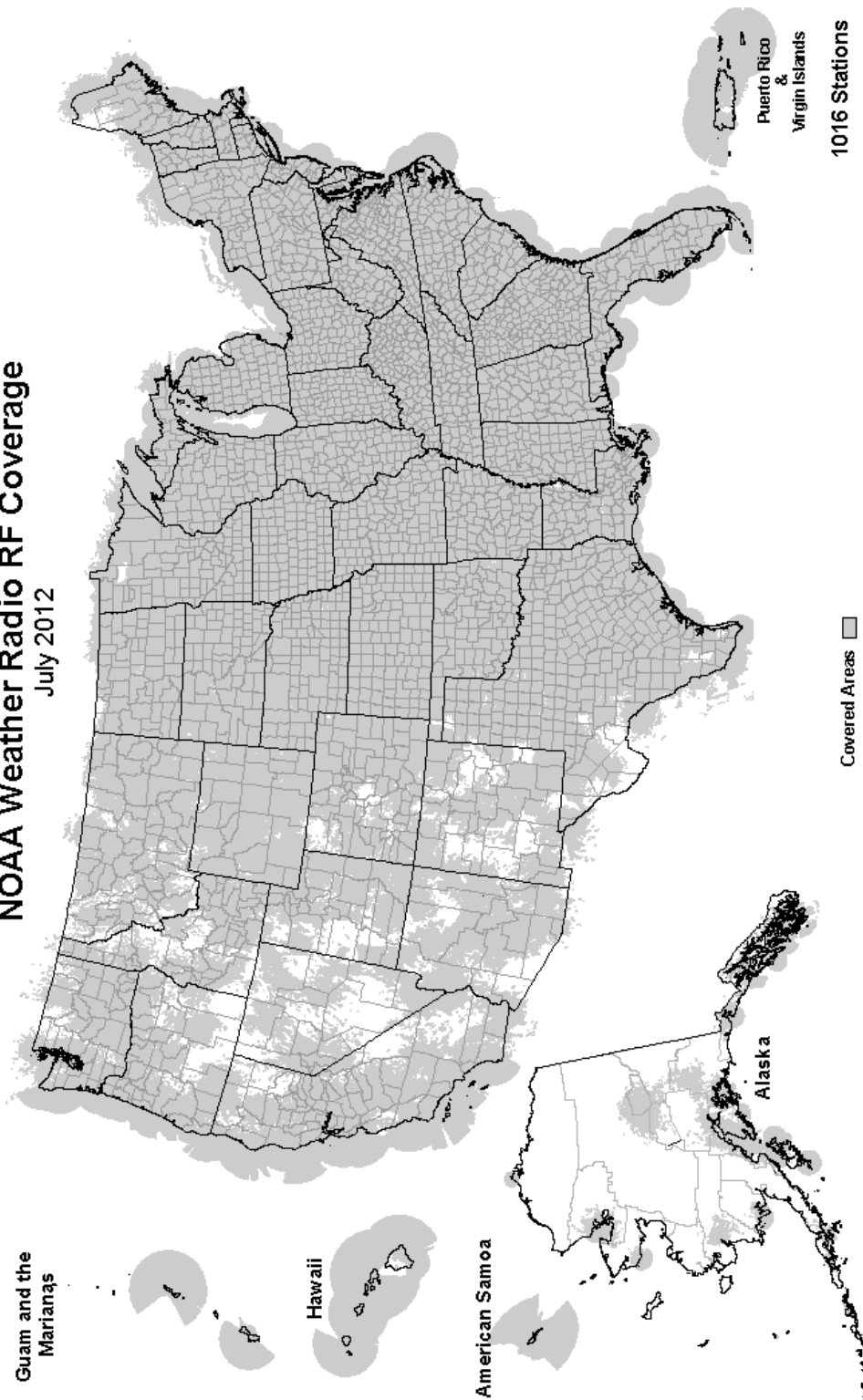
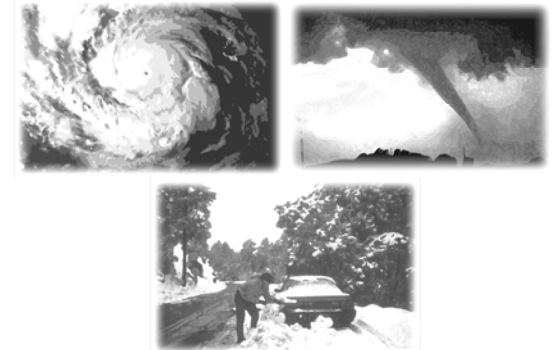
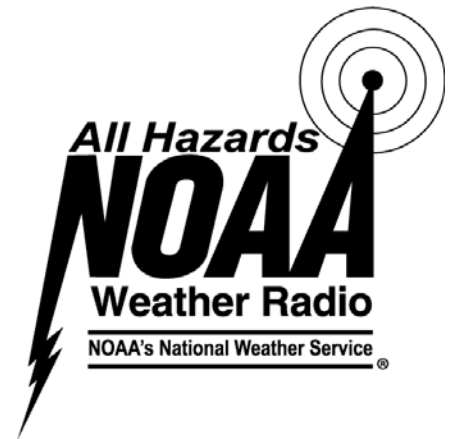


NOAA Weather Radio RF Coverage
July 2012



NOAA/PA 94062
Rev July 2012



***The Voice of NOAA's
National Weather Service***

< Over 1000 Transmitters >

**Broadcasting Continuous
Weather Information on the
Following Frequencies:**

- 162.400 MHz
- 162.425 MHz
- 162.450 MHz
- 162.475 MHz
- 162.500 MHz
- 162.525 MHz
- 162.550 MHz

U.S. Department of Commerce
National Oceanic and Atmospheric Administration
National Weather Service

<http://www.weather.gov/nwr/>

NOAA WEATHER RADIO

The Voice of NOAA's National Weather Service

<http://www.weather.gov/nwr>

NOAA Weather Radio is a service of the National Oceanic and Atmospheric Administration (NOAA) of the U.S. Department of Commerce. As the "voice of the National Weather Service," it provides continuous broadcasts (24 hours a day) of the latest weather information from local National Weather Service offices. Weather messages are repeated every 4 to 6 minutes and are routinely updated every 1 to 6 hours or more frequently in rapidly changing local weather or if a nearby natural hazardous or manmade condition exists.



The regular broadcasts are specifically tailored to weather information needs of the people within the service area of the transmitter. For example, in addition to general weather information, stations in coastal areas provide information of interest to mariners. Other specialized information, such as hydrological forecasts and other climate data may be broadcast.

During severe weather, National Weather Service forecasters can interrupt the routine weather broadcasts and insert special warning messages concerning imminent threats to life and property. The forecaster can also add special signals to warnings that trigger "alerting" features of specially equipped receivers. In the simplest case, this signal activates audible or visual alarms, indicating that an emergency condition exists within the broadcast areas of the station being monitored, and alerts the listener to turn up the volume and stay tuned for more information. More sophisticated receivers are automatically turned on and set to an audible volume when an alert is received.

In the most sophisticated alerting system, NOAA Weather Radio Specific Area Message Encoding (SAME), digital coding is employed to activate only those special receivers programmed for specific emergency conditions in specific area, typically a county. SAME can activate specially equipped radio and cable television receivers and provide a short text message that identifies the location and type of emergency. SAME is the primary activator for the FCC Emergency Alert System (EAS).

To program NWR SAME receivers with the proper county(s) and marine area(s) of choice, you need to know the 6-digit SAME code number(s) for that county(s). Once you have your code number(s), follow the manufacturer's directions for programming your NWR SAME receiver. You can obtain your SAME code numbers by dialing:

888-NWR-SAME (888-697-7263) – Voice &TTY/TTD Accessible

Under a January 1975 White House policy statement, NOAA Weather Radio was designated the sole Government-operated radio system to provide direct warning into private homes for both

SOUTH CAROLINA	Burkeville.....162.425	Manti.....162.425	Morgantown.....162.475
Aiken.....162.450	Carrizo Springs.....162.550	Milford/Cedar City.....162.400	Sutton.....162.450
Aynor.....162.400	Center.....162.525	Moab.....162.475	
Barnwell.....162.500	Childress.....162.525	Monticello.....162.450	WISCONSIN
Beaufort.....162.450	Cisco.....162.500	Salt Lake City.....162.550	Ashland.....162.525
Charleston.....162.550	Coleman.....162.475	St. George.....162.475	Baraboo.....162.450
Cheraw.....162.450	Corpus Christi.....162.550	Tabiona.....162.550	Black River Falls.....162.500
Columbia.....162.400	Corsicana.....162.525	Tooele (South Mountain).....162.450	Coloma.....162.400
Cross.....162.475	Crowley/Fort Worth.....162.550	Tooele (Vernon Hills).....162.525	Crandon.....162.450
Florence.....162.550	Cumby.....162.500	Vernal.....162.400	Dubuque.....162.400
Georgetown.....162.500	Dallas.....162.400	Wendover.....162.475	Fond Du Lac.....162.500
Greenville.....162.550	Del Rio.....162.400		Green Bay.....162.550
Jasper County.....162.400	D'Hanis.....162.525	VERMONT	Gresham.....162.500
Kirksey.....162.425	Dickens.....162.500	Burlington.....162.400	Janesville.....162.425
Orangeburg.....162.525	Dilley.....162.500	Castleton.....162.500	Ladysmith.....162.550
Rock Hill.....162.425	El Paso.....162.475	Marlboro.....162.425	Madison.....162.550
Sumter.....162.425	El Paso Spanish.....162.550	St. Johnsbury.....162.425	Menomonie.....162.400
	Galveston.....162.550	Windsor.....162.475	Milwaukee.....162.400
	Gilmer.....162.425		New London.....162.525
SOUTH DAKOTA	Gonzales.....162.525	VIRGIN ISLANDS	Park Falls.....162.500
Aberdeen.....162.475	Guadalupe Mt Nat'l. Park.....162.525	St. Croix.....162.500	Prairie Du Chien.....162.500
Arlington.....162.525	Junction.....162.475		Racine.....162.450
Faith.....162.475	Kerrville.....162.450	VIRGINIA	Rhineland.....162.400
Firesteel.....162.425	La Grange.....162.500	Accomack.....162.525	Richland Center.....162.475
Hot Springs.....162.425	Laredo.....162.550	Covesville.....162.450	Sheboygan.....162.525
Lead.....162.525	Llano.....162.425	Fredericksburg.....162.425	Sister Bay.....162.425
Lowry.....162.500	Lubbock.....162.400	Heathsville.....162.400	Spooner.....162.475
Mitchell.....162.450	Lufkin.....162.550	Lynchburg.....162.550	Tomah.....162.525
Philip.....162.450	Marietta.....162.525	Manassas.....162.550	Wausau.....162.475
Pickstown.....162.425	Miami.....162.450	Norfolk.....162.550	Wausaukee.....162.400
Pierre.....162.400	Midland/Odessa.....162.400	Richmond.....162.475	Winona.....162.425
Porcupine.....162.500	Milano.....162.525	Roanoke.....162.475	Withee.....162.425
Rapid City.....162.550	Mineral Wells.....162.525	Sand Mtn.....162.450	
Reliance.....162.525	Muenster.....162.425	South Boston.....162.525	WYOMING
Sioux Falls.....162.400	New Taiton.....162.450		Afton.....162.425
South Shore.....162.425	Onalaska.....162.500	WASHINGTON	Casper.....162.400
Wessington.....162.550	Ozona.....162.500	Astoria.....162.400	Cheyenne.....162.550
White River.....162.550	Palestine.....162.450	Capitol Peak.....162.475	Cody.....162.400
	Paris.....162.550	Cle Elum.....162.400	Dubois.....162.450
TENNESSEE	Pecos.....162.450	Davis Peak.....162.525	Elk Plaza.....162.425
Bristol.....162.550	Perryton.....162.475	Dayton.....162.525	Evanston.....162.450
Centerville.....162.450	Pharr.....162.400	Forks.....162.425	Gillette.....162.500
Chattanooga.....162.550	Plainview.....162.450	H Street - Blaine Area.....162.525	Glendo.....162.450
Clarksville.....162.500	Port O'Connor.....162.475	Neah Bay.....162.550	Grant Village.....162.450
Clifton.....162.500	Richland Springs.....162.525	Okanogan.....162.525	Jackson.....162.525
Cookeville.....162.400	Rio Grande City.....162.425	Plymouth.....162.425	Kaycee.....162.550
Dyersburg.....162.500	Riviera.....162.525	Puget Sound Marine.....162.425	Kemmerer.....162.525
Hickman.....162.500	San Angelo.....162.550	Randle.....162.425	Lander.....162.475
Jackson.....162.550	San Antonio.....162.550	Richland.....162.450	Newcastle.....162.475
Knoxville.....162.475	Seguin.....162.475	Seattle.....162.550	Pinedale.....162.500
La Follette.....162.450	Seminole.....162.425	Spokane.....162.400	Rawlins.....162.425
Lafayette.....162.525	Sherman.....162.475	Wenatchee.....162.475	Rock Springs.....162.550
Lawrenceburg.....162.425	Stephenville.....162.450	Yakima.....162.550	Sheridan.....162.475
Lobelville.....162.525	Summerfield.....162.500		Thermopolis.....162.500
Memphis.....162.475	Sweetwater.....162.425	WEST VIRGINIA	Worland.....162.525
Nashville.....162.550	Texarkana.....162.550	Backbone Mountain.....162.450	
Shelbyville.....162.475	Three Rivers.....162.450	Beckley.....162.550	
Spencer.....162.450	Throckmorton.....162.425	Charleston.....162.400	
Vale.....162.450	Tomball.....162.400	Clarksburg.....162.550	
Waverly.....162.400	Tyler.....162.475	Garfield.....162.500	
Winchester.....162.525	Uvalde.....162.425	Gilbert.....162.475	
	Victoria.....162.400	Greggs Knob.....162.500	
TEXAS	Waco.....162.475	Hinton.....162.425	
Abilene.....162.400	Wichita Falls.....162.475	Monterville.....162.525	
Alpine.....162.550		Moorefield.....162.400	
Amarillo.....162.550	UTAH		
Austin.....162.400	Bear Lake.....162.500		
Bay City.....162.425	Castle Dale.....162.500		
Beaumont.....162.475	Coalville/ Park City.....162.475		
Big Spring.....162.475	Escalante.....162.425		
Borger.....162.400	Lake Powell.....162.550		
Brownsville.....162.550	Logan.....162.400		
Bryan.....162.550			

The National Weather Service requests your assistance in reporting any outages of NOAA Weather Broadcast Stations.

Please use our Toll Free Number (888) 697-7263 or send an Email to nwroutage@noaa.gov to report the outage.

As of July, 2012 NOAA is operating 1017 stations across the United States and its territories.

El Dorado Springs.....	162.475	Shubert.....	162.500
Fredericktown.....	162.500	Sidney.....	162.500
Gainesville.....	162.425	Superior.....	162.525
Hannibal.....	162.475	Trenton.....	162.500
Hermitage.....	162.450	Valentine.....	162.450
Jamestown.....	162.425	Yankton.....	162.500
Joplin.....	162.425		
Kahoka.....	162.450		
Kansas City.....	162.550		
La Plata.....	162.525		
Lancaster.....	162.550		
Maryville.....	162.425		
Neosho.....	162.450		
Piedmont.....	162.425		
Springfield.....	162.400		
St. Louis.....	162.550		
Summersville.....	162.475		
Trenton.....	162.500		
Wardell.....	162.525		
West Plains.....	162.525		

MONTANA

Baker.....	162.550	Clarksville.....	162.400
Belgian Hill.....	162.500	Concord.....	162.400
Billings.....	162.550	Deerfield.....	162.450
Bozeman.....	162.500	Hanover.....	162.525
Broadus.....	162.425	Holderness.....	162.550
Browning.....	162.525	Mt. Washington.....	162.500
Butte.....	162.550	Pack Monadnock.....	162.525
Circle.....	162.550		
Dillon.....	162.475		
Ekalaka.....	162.475		
Forsyth.....	162.525		
Glasgow.....	162.400		
Glendive.....	162.475		
Glentana.....	162.525		
Great Falls.....	162.550		
Hardin.....	162.450		
Havre.....	162.400		
Helena.....	162.400		
Jordan.....	162.500		
Kalispell.....	162.550		
Lewistown.....	162.500		
Livingston.....	162.525		
Malta.....	162.475		
Miles City.....	162.400		
Missoula.....	162.400		
Plentywood.....	162.475		
Poplar.....	162.425		
Ryegate.....	162.450		
Scobey.....	162.450		
Winnett.....	162.400		

NEBRASKA

Albion.....	162.500		
Bassett.....	162.475		
Beatrice.....	162.450		
Cambridge.....	162.525		
Chadron.....	162.525		
Columbus.....	162.450		
Grand Island.....	162.400		
Holdrege.....	162.475		
Lexington.....	162.425		
Lincoln.....	162.475		
Merna.....	162.500		
Merriman.....	162.400		
Mullen.....	162.425		
Norfolk.....	162.550		
North Platte.....	162.550		
Omaha.....	162.400		
Ord.....	162.525		
Oshkosh.....	162.525		
Scottsbluff.....	162.475		

White Hill.....	162.525		
NORTH CAROLINA			
Asheville.....	162.400		
Buck Mountain.....	162.500		
Cape Hatteras.....	162.475		
Chapel Hill.....	162.550		
Charlotte.....	162.475		
Ellerbe.....	162.400		
Garner.....	162.450		
Henderson.....	162.500		
Linville.....	162.450		
Mamie.....	162.425		
Margarettsville.....	162.450		
Mooreville.....	162.525		
Mount Jefferson.....	162.500		
New Bern.....	162.400		
Robbinsville.....	162.525		
Rocky Mount.....	162.475		
Saint Pauls.....	162.475		
Warsaw.....	162.425		
Windsor.....	162.525		
Winnabow.....	162.550		
Winston-Salem.....	162.400		

OREGON			
Bend/Redmond.....	162.500		
Brookings.....	162.550		
Burns Butte.....	162.475		
Cape Blanco.....	162.425		
Carney Butte.....	162.475		
Coos Bay.....	162.400		
Eugene.....	162.400		
Florence.....	162.500		
Fossil.....	162.550		
Heppner.....	162.425		
John Day.....	162.500		
Klamath Falls.....	162.550		
Medford.....	162.400		
Mt Hebo.....	162.525		
Mt. Ashland.....	162.475		
Neahkahnie.....	162.425		
Newport.....	162.550		
Portland.....	162.550		
Reedsport.....	162.525		
Roseburg.....	162.550		
Salem.....	162.475		
Spout Springs.....	162.400		
The Dalles.....	162.400		
Tillamook.....	162.475		

NORTH DAKOTA			
Bismarck.....	162.475		
Cavalier.....	162.450		
Dickinson.....	162.400		
Fargo.....	162.475		
Fort Ransom.....	162.525		
Grand Forks.....	162.475		
Jamestown.....	162.550		
Langdon.....	162.500		
Minot.....	162.400		
New Town.....	162.525		
Petersburg.....	162.400		
Rolla.....	162.475		
Scranton.....	162.525		
Sheyenne.....	162.525		
Steele.....	162.400		
Webster.....	162.425		
Williston.....	162.550		
Willow City.....	162.450		

NORTHERN MARIANA ISLANDS			
Saipan.....	162.550		

OHIO			
Akron.....	162.400		
Athens.....	162.425		
Bridgeport.....	162.525		
Carey.....	162.525		
Chillicothe.....	162.500		
Cleveland.....	162.550		
Columbus.....	162.550		
Dayton.....	162.475		
Grafton.....	162.500		
High Hill.....	162.475		
Lima.....	162.400		
Mansfield.....	162.450		
Marietta.....	162.400		
New Philadelphia.....	162.425		
Otway.....	162.525		
Sandusky.....	162.400		
Toledo.....	162.500		
Youngstown.....	162.500		

OKLAHOMA			
Altus.....	162.425		
Antlers.....	162.400		
Ardmore.....	162.525		
Atoka.....	162.500		

Bartlesville.....	162.425		
Broken Bow.....	162.450		
Chickasha.....	162.450		
Clinton.....	162.525		
Enid.....	162.475		
Grove.....	162.500		
Guymon.....	162.500		
Lawton.....	162.550		
McAlester.....	162.475		
Oklahoma City.....	162.400		
Oktaha.....	162.525		
Ponca City.....	162.450		
Stillwater.....	162.500		
Tulsa.....	162.550		
Wewoka.....	162.550		
Woodward.....	162.500		

PENNSYLVANIA			
Allentown.....	162.400		
Altoona.....	162.425		
Clearfield.....	162.550		
Coudersport.....	162.500		
Erie.....	162.400		
Harrisburg.....	162.550		
Hibernia Park.....	162.425		
Honesdale.....	162.450		
Huntingdon.....	162.525		
Johnstown.....	162.400		
Meadville.....	162.475		
Parker.....	162.425		
Philadelphia.....	162.475		
Pittsburgh.....	162.550		
Punxsutawney.....	162.500		
State College.....	162.475		
Towanda.....	162.525		
Warren.....	162.450		
Wellsboro.....	162.475		
Wilkes-Barre.....	162.550		
Williamsport.....	162.400		

PUERTO RICO			
Culebra.....	162.450		
Maricao.....	162.550		
San Juan.....	162.400		

RHODE ISLAND			
Providence.....	162.400		

natural disasters and nuclear attack. This concept has been expanded to include warnings for all hazardous conditions that pose a threat to life and safety, both at a local and national level. As a result, NOAA Weather Radio is being better integrated with other National Weather Service systems to provide state and local emergency managers and other warning providers better access to local weather forecast offices, allowing hazard warnings of all types to be broadcast on NOAA Weather Radio within seconds

NOAA Weather Radio currently broadcasts from 1017 stations in fifty states, Puerto Rico, the U.S. Virgin Islands, American Samoa, Guam, and Saipan on seven frequencies in the VHF band, ranging from 162.400 to 162.550 megahertz (MHz). These frequencies are outside the normal AM or FM broadcast bands.

Special radios that receive only NOAA Weather Radio, both with and without special alerting features, are available from numerous manufacturers. In addition, other manufacturers are including NWR capability in a variety of receivers. NOAA Weather Radio capability is currently available on automobile, aircraft, marine, citizens band, and standard AM/FM radios as well as communications receivers, transceivers, scanners, and cable TV.

By nature and design, NOAA Weather Radio coverage is limited to an area within 40 miles of the transmitter. The quality of reception is dictated by transmitter distance, local terrain, and the quality and location of the receiver. In general, those using a high quality receiver on flat terrain or at sea can expect reliable reception beyond 40 miles. Those with standard receivers, surrounded by large buildings in cities and those in mountain valleys may experience little or no reception at considerably less than 40 miles. If possible, a receiver should be tested in the location where it will be used prior to purchase.

NOAA Weather Radio is directly available to a large portion of the U.S. population. The National Weather Service is currently engaged in a program to increase coverage to at least 95 percent of the population.

If you have a question regarding the technical aspects of NOAA Weather Radio such as transmitter location, reception, and characteristics or if you are interested in becoming a partner with the National Weather Service to identify or provide local funding and/or facilities for the installation of a NOAA Weather Radio transmitter, please contact your local National Weather Service Office or send a letter to:

National Weather Service
 Attn: Dissemination Systems Branch, W/OPS17
 1325 East-West Highway
 Silver Spring, MD 20910

