

## Brown Bag Lunch & Learn (#6 and #17)

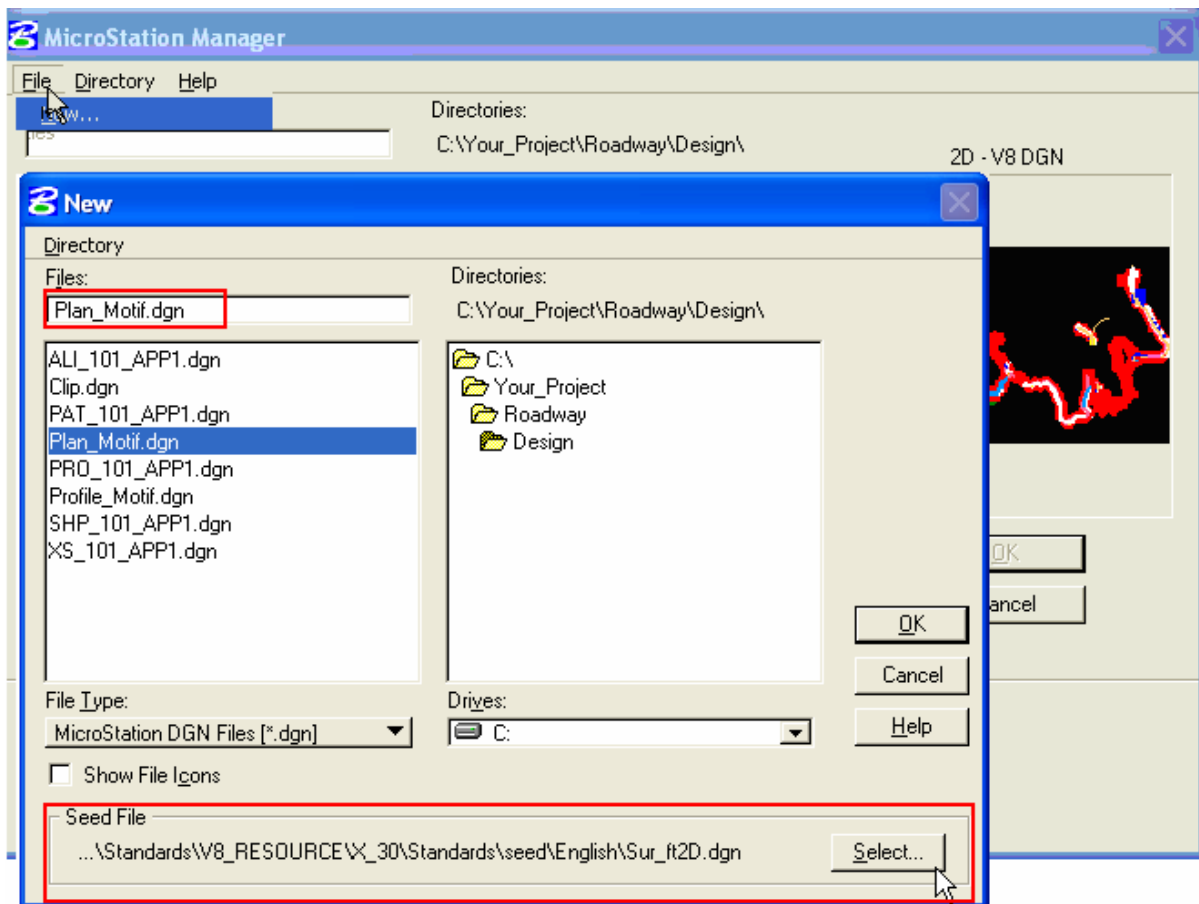
5/3/06

Updated 2/27/07

### Topic: Plan & Profile Sheet Composition (Geopak Sheet Clipping)

GEOPAK Plan and Profile Sheet Composition tool is setup for single plans, double plans and plan/profile sheets (1000 & 2000 Metric Scale and 1:100 & 1:200 English Scale). Sheet setup is developed in the Sheet library files **English\_sheets.psl** and **Metric\_sheets.psl**, can not be modified by the user. **Note: Make sure the correct .psl file is attached for your seed file** (for 1000 resolution files with x30 criteria, manually attach .psl file from V8\_RESOURCE\X\_30\Standards\Sheet\_Layout\english\Use\_with\_Old\_CFL\_Seed directory).

1. Create Clip.dgn, Plan\_Motif.dgn and Profile\_Motif.dgn from a seed file to properly setup of plan and profile sheets for your alignment. **Note:** When creating these file make sure to use the correct seed file that matches the resolution of your design file (1000 or 10,000). These files can be created with seed files located in V8\_RESOURCE\X\_30\Standards\seed\English or Metric.



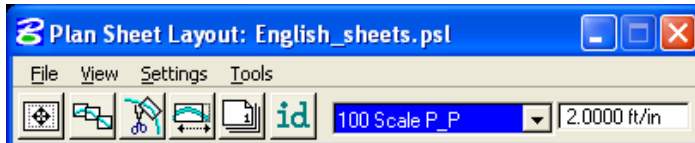
- Clip.dgn - Visual representation of how each sheet will layout in relation to the others. Once the file is created from the seed file, reference your plan and profile into this file. Also attach sheet cell libraries **English\_pnp\_sheet\_layout.cel** or **Metric\_pnp\_sheet\_layout.cel** (ability to automatically clip the graphics with notches for project Information).
- Motif.dgn - Once the file is created from the seed file, reference your plan to the Plan\_Motif.dgn and profile to the Profile\_motif.dgn file. Plan\_Motif .dgn file should have reference files for overall design, mapping, raster images, ROW, etc. The levels that you would like to be displayed in the plan sheets, should be turned on/off in the reference file that is attached to the Motif file.

## Brown Bag Lunch & Learn (#6 and #17)

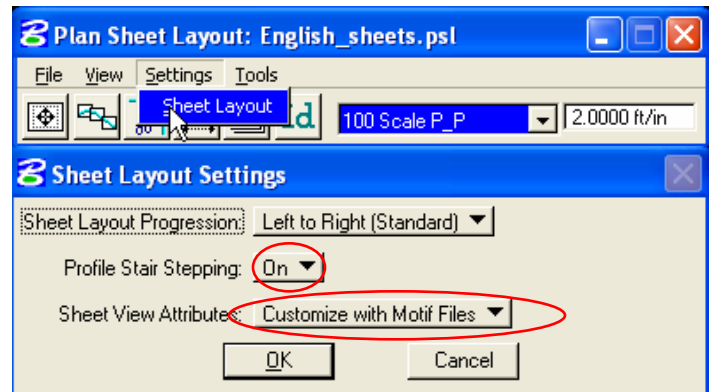
5/3/06

Updated 2/27/07

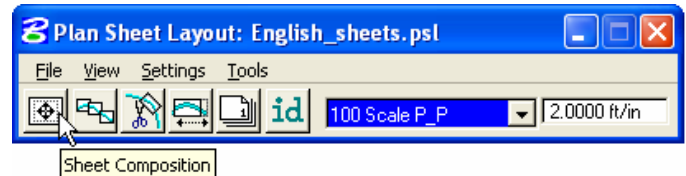
2. Open the Clip.dgn and invoke Plan and Profile Sheet Composition tool from Project Manager Workflow by selecting the button for Plan & Profile Sheets. Select a Run or create a new Run.
3. Select the style for your plan sheets using the drop down arrow, and adjust the Scale field. For example, select 100 Scale P\_P and set scale field to 2.0000 ft/in. The scale need to be set as shown in the sheet style, see pages 7-10.



4. From the pulldown, select **Settings > Sheet Layout** and adjust the Sheet Layout Settings and press OK.



5. Invoke the **Sheet Composition Tool** by clicking on the Sheet Composition icon from the Plan Sheet Layout dialog.

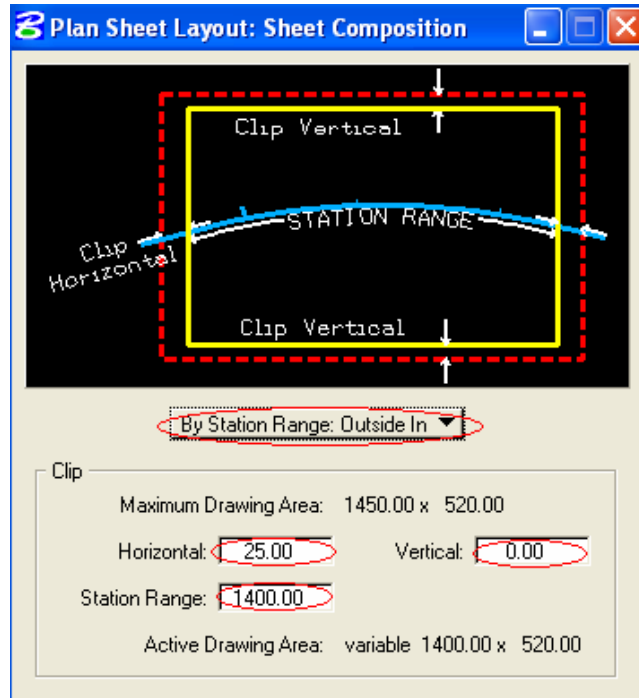


6. Modify the Sheet Composition dialog box for your sheet style. **Use the values setup for each of the sheet styles.** See sheet styles on pages 7-10 or on Chapter 19 of Geopak CADD Standards Manual. Dialog setting shown has sheet styles for 100 scale P&P:

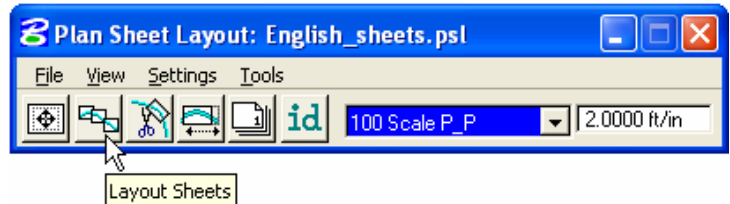
Brown Bag Lunch & Learn (#6 and #17)

5/3/06

Updated 2/27/07

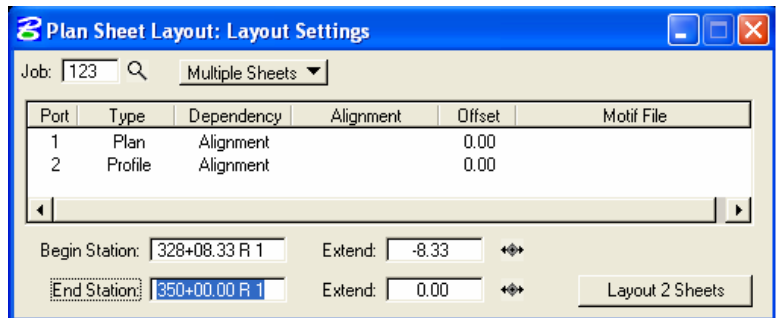


7. Invoke the **Layout Sheets tools** by selecting the Layout Sheets icon from the Plan Sheet Layout Dialog.



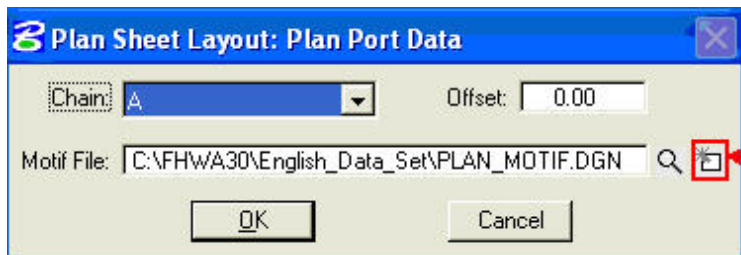
8. Select **Multiple Sheets** from the dialog box and Select the **GPK file**.

9. Populate the Plan & Profile Port Data dialog box, double click anywhere along the row in the Layout Settings dialog box.



10. Select the correct Chain and the appropriate Plan Motif file. Press **OK**.

**Note: When creating Double Plan Sheets (plan/plan), attach Plan Motif File to Port 1 & 2.**



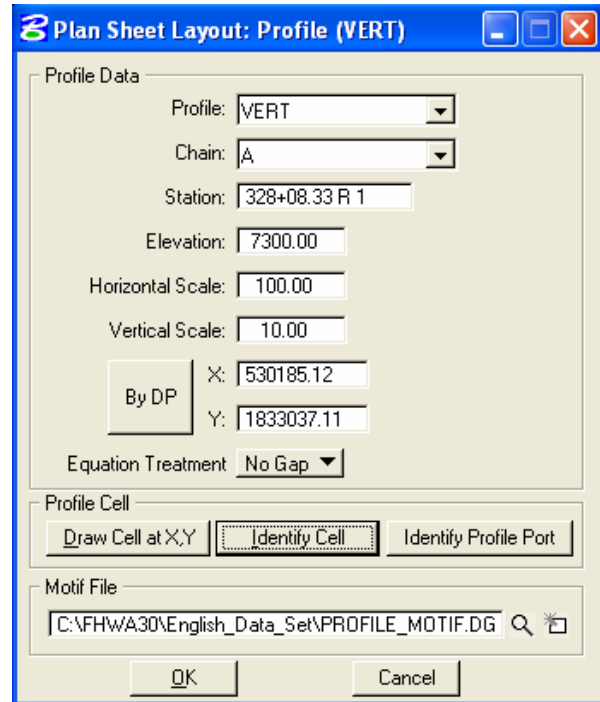
## Brown Bag Lunch & Learn (#6 and #17)

5/3/06

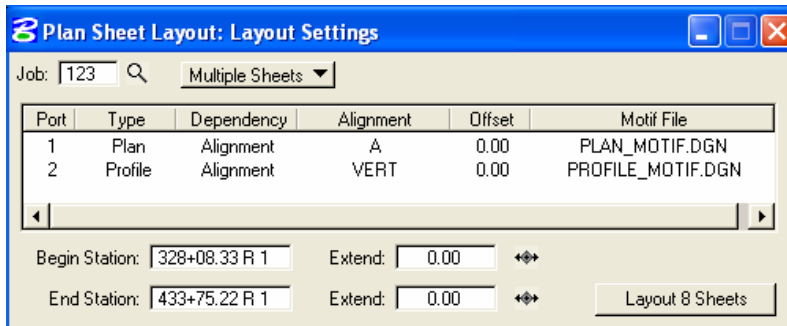
Updated 2/27/07

If Plan\_Motif file is not created then select Create Motif File Icon to create the Plan\_Motif file. Profile-Motif file can also be created in the Profile Port Data dialog. After creating the Motif files, make sure to reference your plan and profile drawings to the Motif files prior to clipping the sheets.

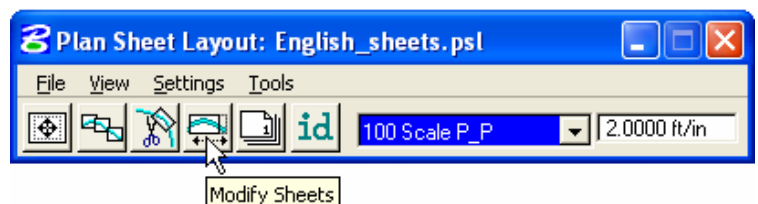
11. Populate the Profile Data dialog fields by identifying profile cell. Select the appropriate Profile Motif file. Press **OK**.



12. GEOPAK will calculate the number of sheets to layout. If the number of sheets is acceptable, press the **Layout Sheets** button and GEOPAK will draw clipping shapes into the drawing. Use the extend distance field to enter a value to shift the clipping shapes backwards or forwards a given distance.



13. If sheets are not clipped as desired use the **Modify Sheets** to modify your clip boxes. Two most common types of modification supported are sliding the sheets and modifying the drawing area. The drawing area cannot be increased in Length (Horizontal) or Height (Vertical) to exceed the drawing area setup in the sheet library.

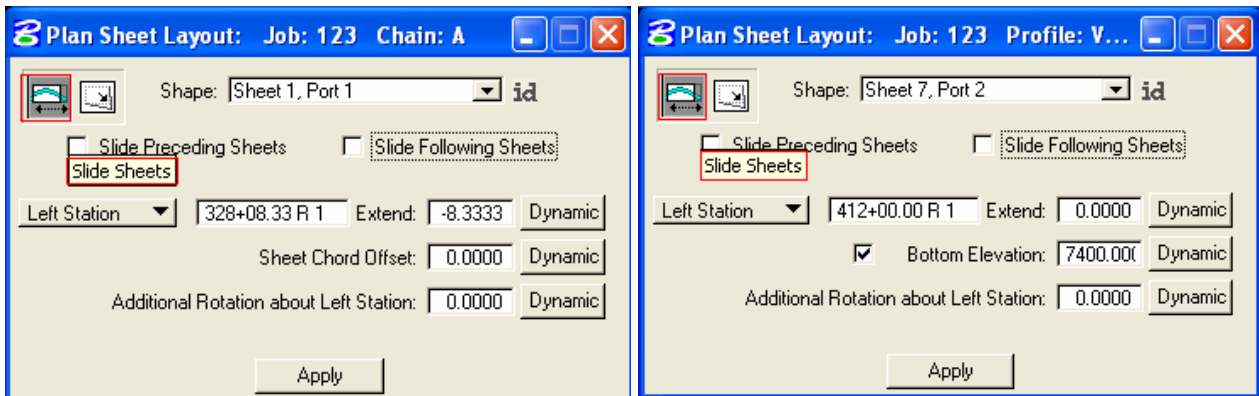


## Brown Bag Lunch & Learn (#6 and #17)

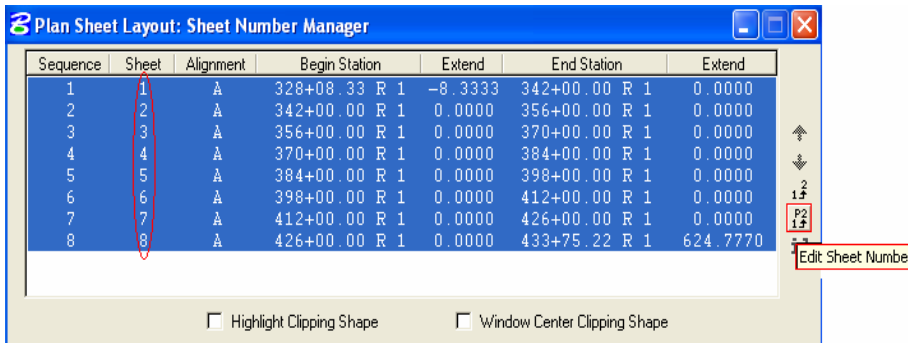
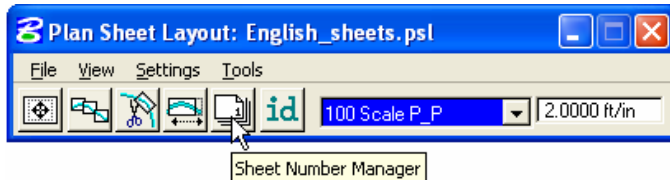
5/3/06

Updated 2/27/07

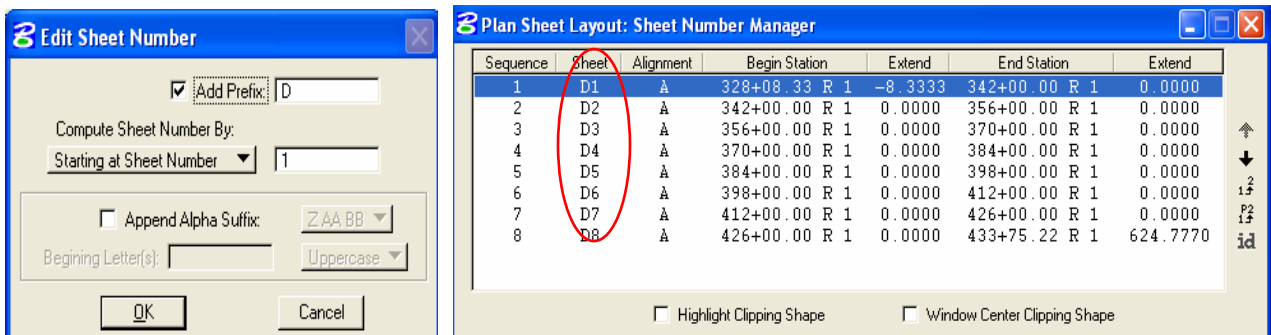
14. Profile clipping boxes should be moved by the incremental elevation up or down. Use the **Id** button or the drop down list to modify you clip shapes.



15. Use the Sheet Number Manager tool to number sheet to CFL standards. Select the **Sheet Number Manager** tool.



16. Click inside the white area anywhere on row one, hold down the shift key and click a second time anywhere on the last row. Once all rows are selected, click on Edit Sheet Number as shown above. Complete the Edit Sheet Number dialog with a **prefix** and Select **OK**.



Sheet Number Manager will be modified as shown above.

## Brown Bag Lunch & Learn (#6 and #17)

5/3/06

Updated 2/27/07

17. Once the clipping shapes are placed and satisfactorily modified, Select the **Clip Sheets** tool to clip your sheets.

REG	STATE	PROJECT	SHEET NO.	TOTAL SHEETS
16	ST	KEYS VIEW ROAD PRA JOTR 13(1)	D1	

Rotate Reference  
Rotate View

COPY TO SHEET FROM REFERENCE FILE AND EDIT FOR PROJECTS

CUSTOMIZE SHEET NUMBER (D1, D2, etc.) USING SHEET NUMBER MANAGER

18. Select the working directory and type the sheet name prefix (follow the naming convention set in Chapter 3 of the CADD standards Manual).
19. Select Orientation to **Rotate View** for Plan & Profile sheets and Single Plan sheets. Select Orientation to **Rotate Reference** for Double Plans sheets and Profile sheets. Sheet Cell is rotated and moved into correct position with plan reference file data when orientation is set to Rotate View. Reference file data is rotated and moved into correct position with each of the sheet cells when orientation is set to Rotate Reference.
20. Select Sheet per File to 1. CFLHD policy is to create one sheet per file.
21. Select the Sheet Range required from the pick list, using the drop down arrows.
22. Enter Labels and Annotation.
23. When Clip Sheets dialogs has been completed press **Process Sheets**.
24. Since the CFL reference sheet cell drawing is write protected. An Alert dialog box will appear. Just click **OK**. Plansheets are clipped for the selected Sheet Style.

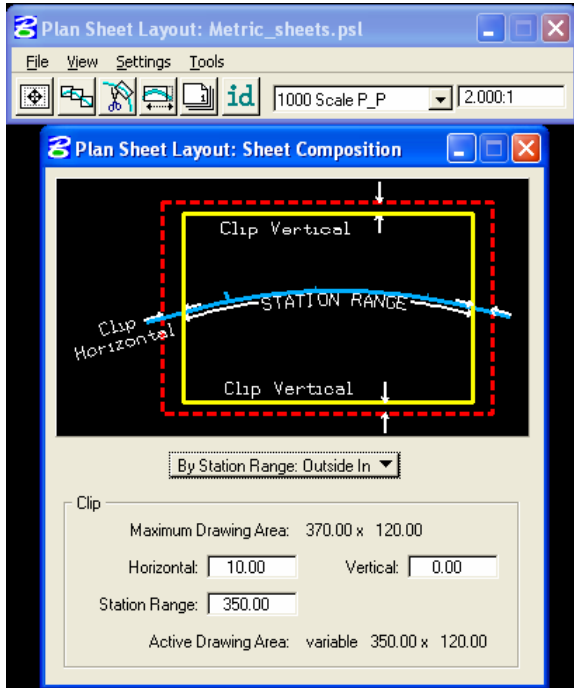
# Brown Bag Lunch & Learn (#6 and #17)

5/3/06

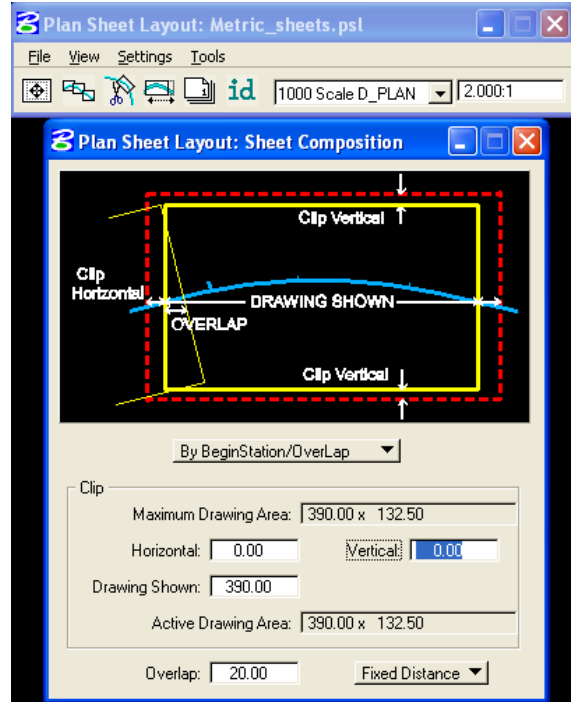
Updated 2/27/07

## METRIC SHEET STYLE

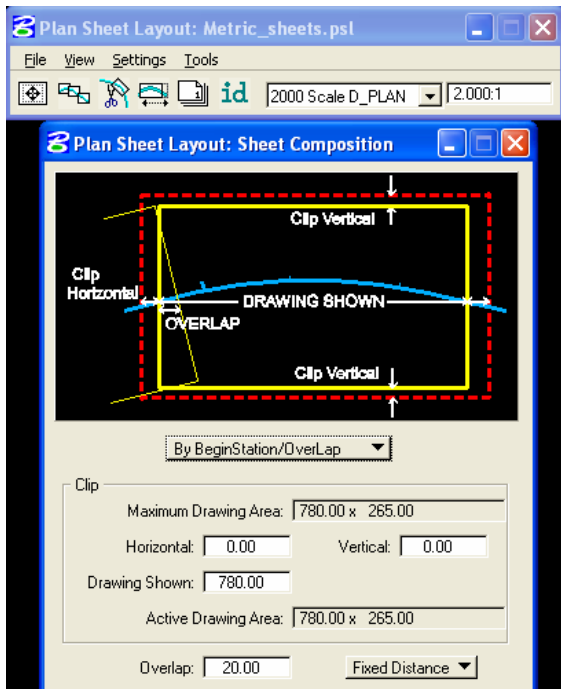
### 1000 Scale Plan/Profile



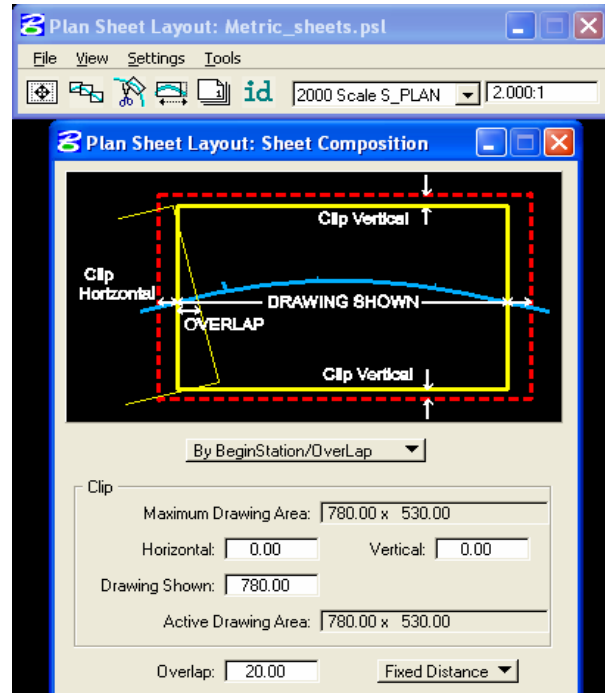
### 1000 Scale Double Plan



### 2000 Scale Double Plan



### 2000 Scale Single Plan



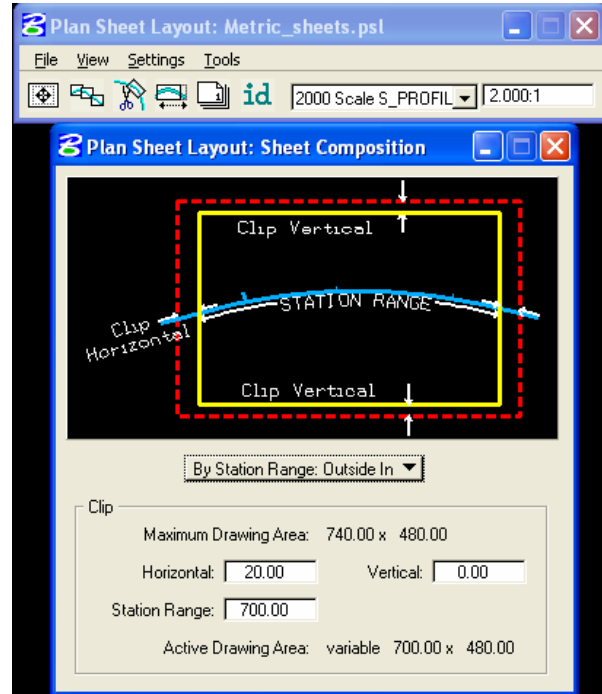
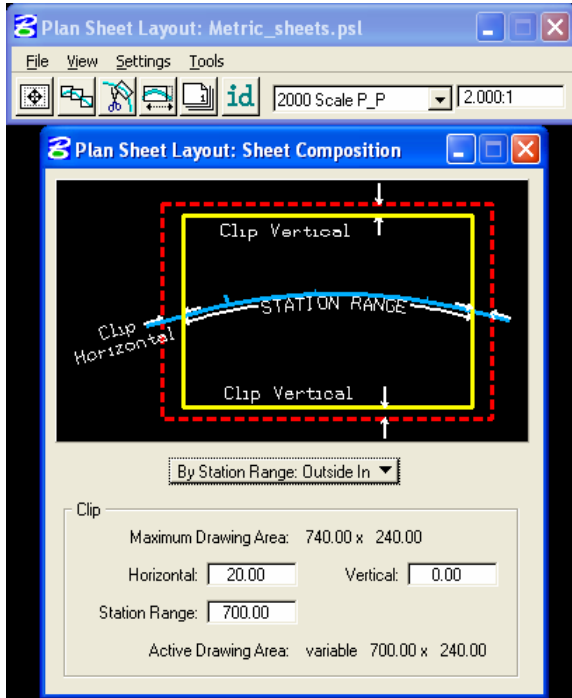
# Brown Bag Lunch & Learn (#6 and #17)

5/3/06

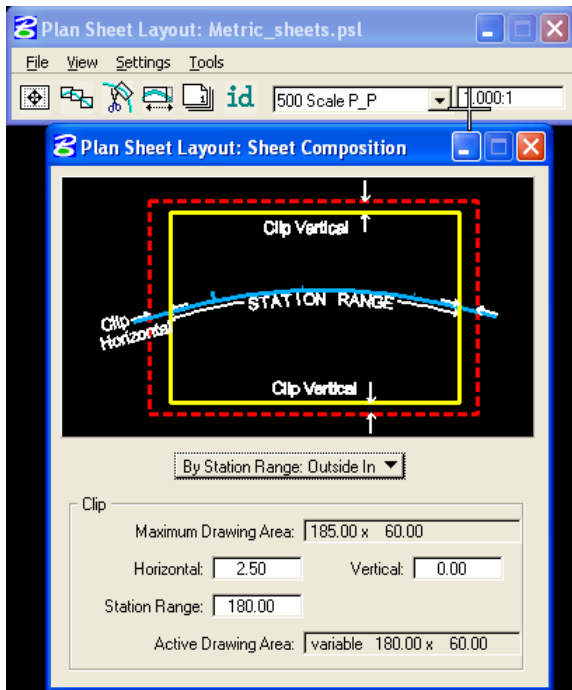
Updated 2/27/07

## 2000 Scale Plan/Profile

## 2000 Scale Single Profile



## 500 Scale Plan/Profile





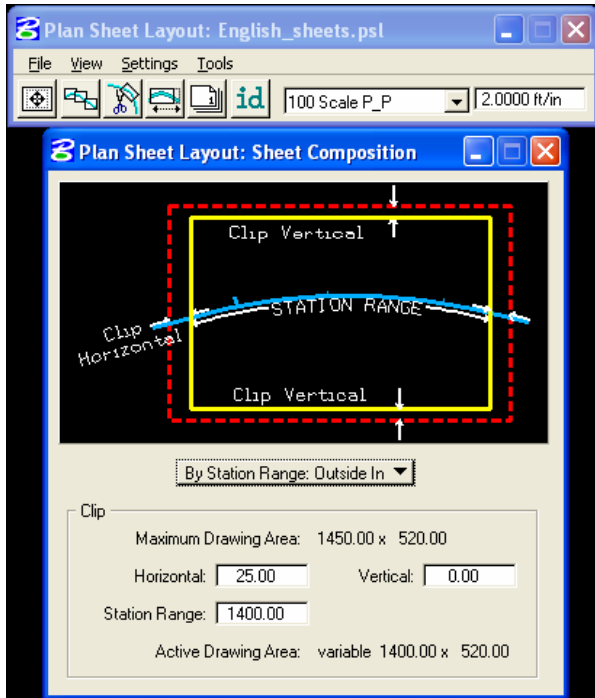
# Brown Bag Lunch & Learn (#6 and #17)

5/3/06

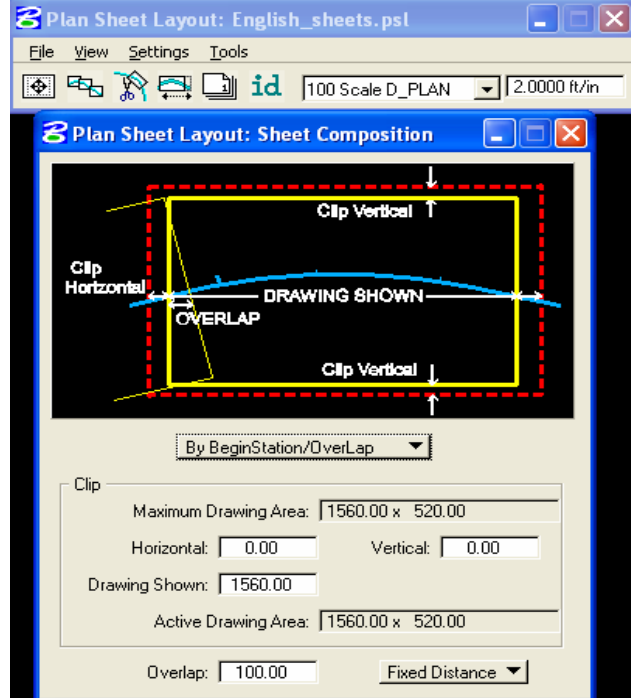
Updated 2/27/07

## ENGLISH SHEET STYLE

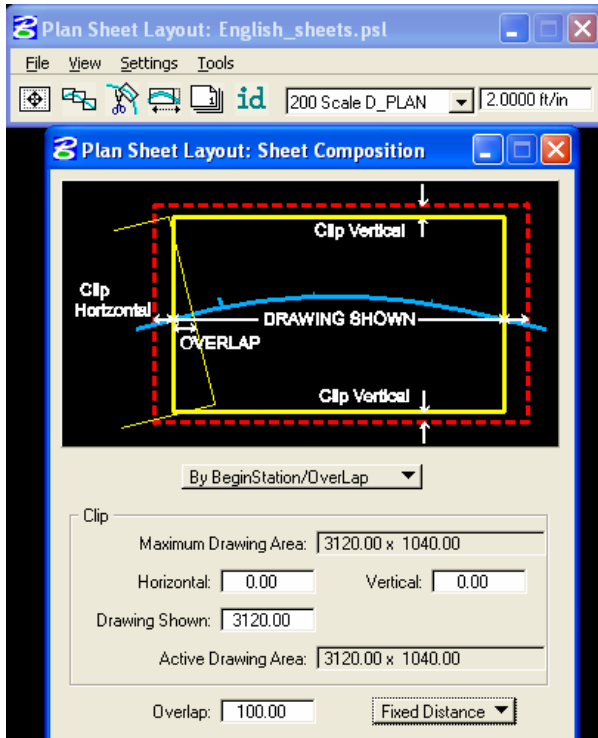
### 100 Scale Plan/Profile



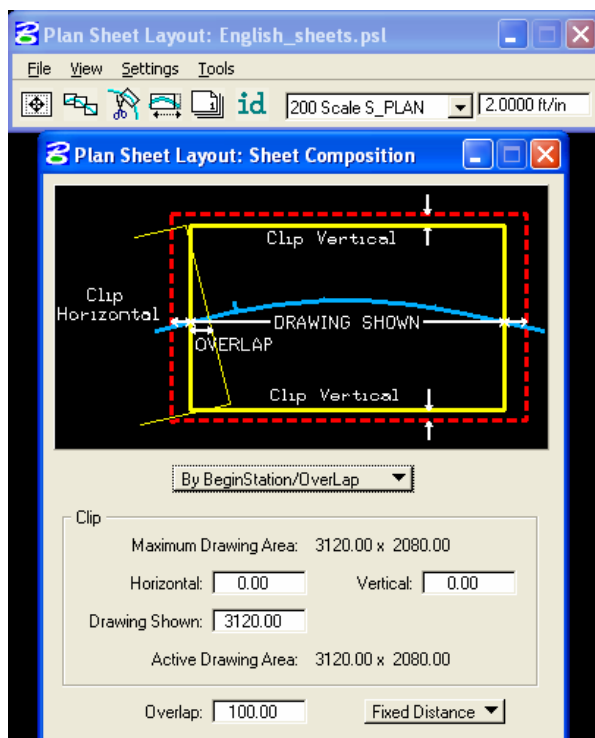
### 100 Scale Double Plan



### 200 Scale Double Plan



### 200 Scale Single Plan



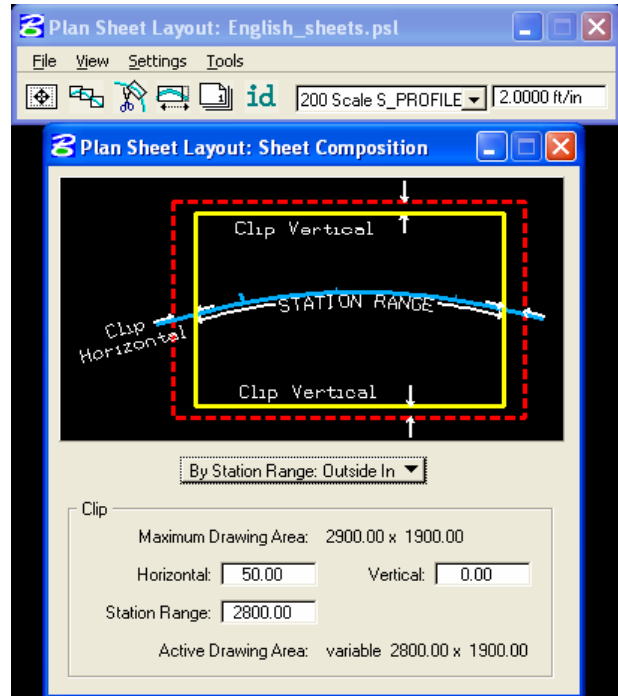
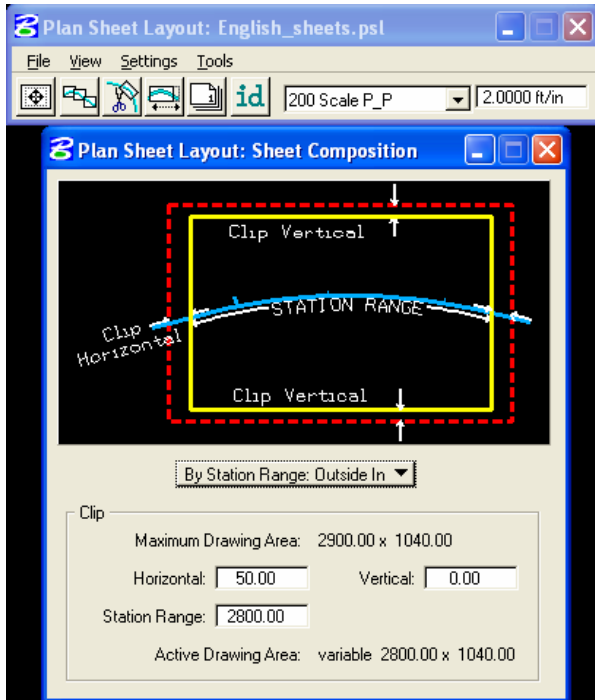
# Brown Bag Lunch & Learn (#6 and #17)

5/3/06

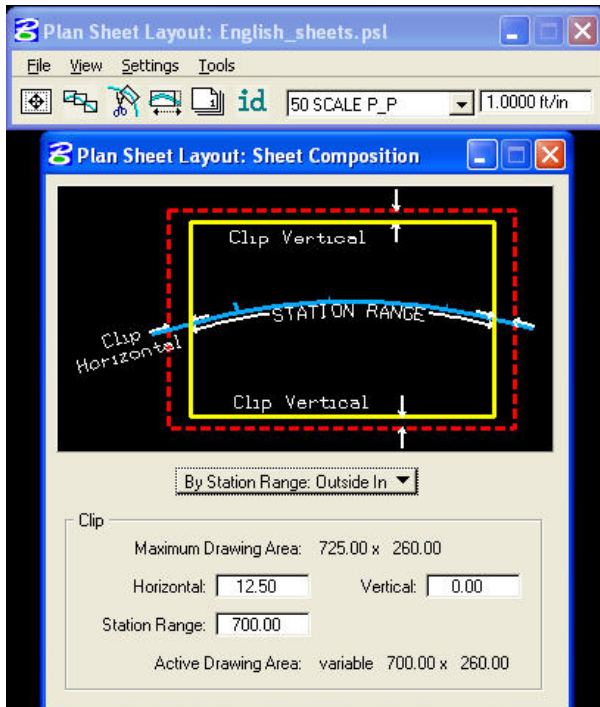
Updated 2/27/07

## 200 Scale Plan/Profile

## 200 Scale Single Profile



## 50 Scale Plan/Profile



*This handout is a condensed version of CFLHD CADD Standards Manual –Chapter 19.*