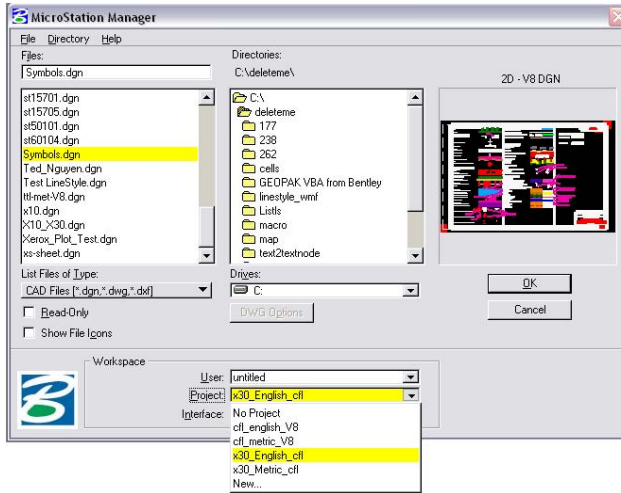


Brown Bag Lunch & Learn #2
3/17/06

Topic: Setting up drawings using V8 with New Standards

- Pick Project Configuration from the "MicroStation Manager" dialog box (CFL or X30 – Metric or English)



- Find Correct Standard Border File

CFL(X10 or X08)
n:\standards\geopak\v8\English\pnp_sheet_layout\geopak2004\bdr-eng-v8.dgn
n:\standards\geopak\v8\metric\pnp_sheet_layout\geopak2004\bdr-met-v8.dgn
X30
n:\standards\v8_resource\x_30\standards\sheet_layout\English\border_English.dgn
n:\standards\v8_resource\x_30\standards\sheet_layout\metric\border_metric.dgn

- Copy the file into n:\your project\roadway\sheets\
- Create new drawing files using the correct seed file (CFL or X30).

CFL(X10 or X08)
n:\standards\microstation\v8\English\seed\...
n:\standards\microstation\v8\metric\seed\...
X30
n:\standards\v8_resource\x_30\standards\seed\English\...
n:\standards\v8_resource\x_30\standards\seed\metric\...

Drawing Types

1. **For Typical Sections, Specials** Open your drawing created from seed file. Reference the Border file from the project location above that you copied the Standard border to.
 - a. Turn off the levels you do not need for your type of drawing (see list on right side of border) [Note that D_CFL_Sheet_Border_PlotShape is set to not plot but will be needed to batch plot your drawings so leave it turned on.]

Brown Bag Lunch & Learn #2

3/17/06

b. Scale border to the scale needed for your drawing (*Note border is drawn for 1"=100' [US Customary] or 1:1000 [Metric]*)

c. **DRAW**

2. **Plan/Profile, Plan/Plan** (GEOPAK created Plans)

a. Follow directions in Chapter 19 of CFLHD CADD Standards

3. **Site Plans, Parking Areas, Manually created (Non-GEOPAK) Plans** Open your drawing created from seed file. Reference in files needed for your drawing.

a. Reference the Border file from the project location above that you copied the Standard border to

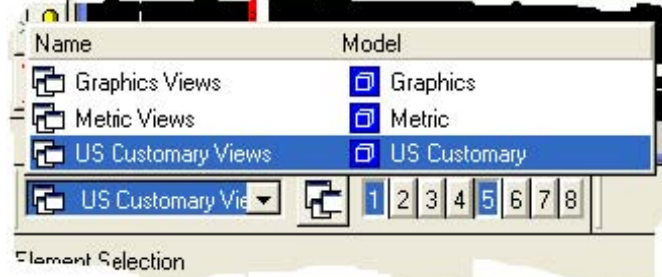
b. Move reference file (*border*) into location

c. Turn off the levels you do not need for your type of drawing (*see list on right side of border*)

d. Scale border to the scale needed for your drawing (*Note border is drawn for 1"=100' [US Customary] or 1:1000 [Metric]*)

4. **Detail Drawings** Copy Detail drawing from CFLHD website

a. Choose Metric or US Customary views from the "View Groups" dialog



b. Delete the "Border" cell in the detail

c. Attach your project border file from your project directory (*It will attach automatically in the right location for the Detail*)

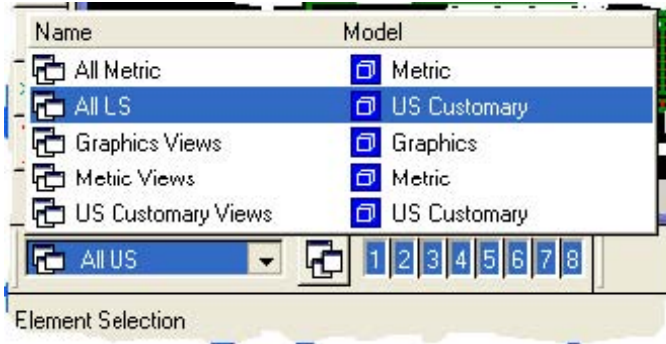
d. Turn off all levels in the Border reference file except

- i. D_CFL_Sheet_Border_PlotShape
- ii. D_CFL_Sheet_Border_Project_Info
- iii. D_CFL_Sheet_Border_Detail
- iv. D_CFL_Sheet_BorderBase
- v. D_CFL_Sheet_Border_NPS_Pkg (*if needed*)

5. **Standard Drawings** Copy Standard drawing from CFLHD website

a. Choose Metric or US Customary views from the "View Groups" dialog

Brown Bag Lunch & Learn #2
3/17/06



- b. Turn off all views except 1 and 5
- c. Turn **off** level D_WFL_Arch and **on** level D_Triad in the active file
- d. Attach your project border file from your project directory
- e. Turn off all levels in the Border reference file except
 - i. D_CFL_Sheet_Border_PlotShape
 - ii. D_CFL_Sheet_Border_Project_Info
 - iii. D_CFL_Sheet_Border_NPS_Pkg (*if needed*)
- f. Be sure to "Save Settings" to keep the view settings