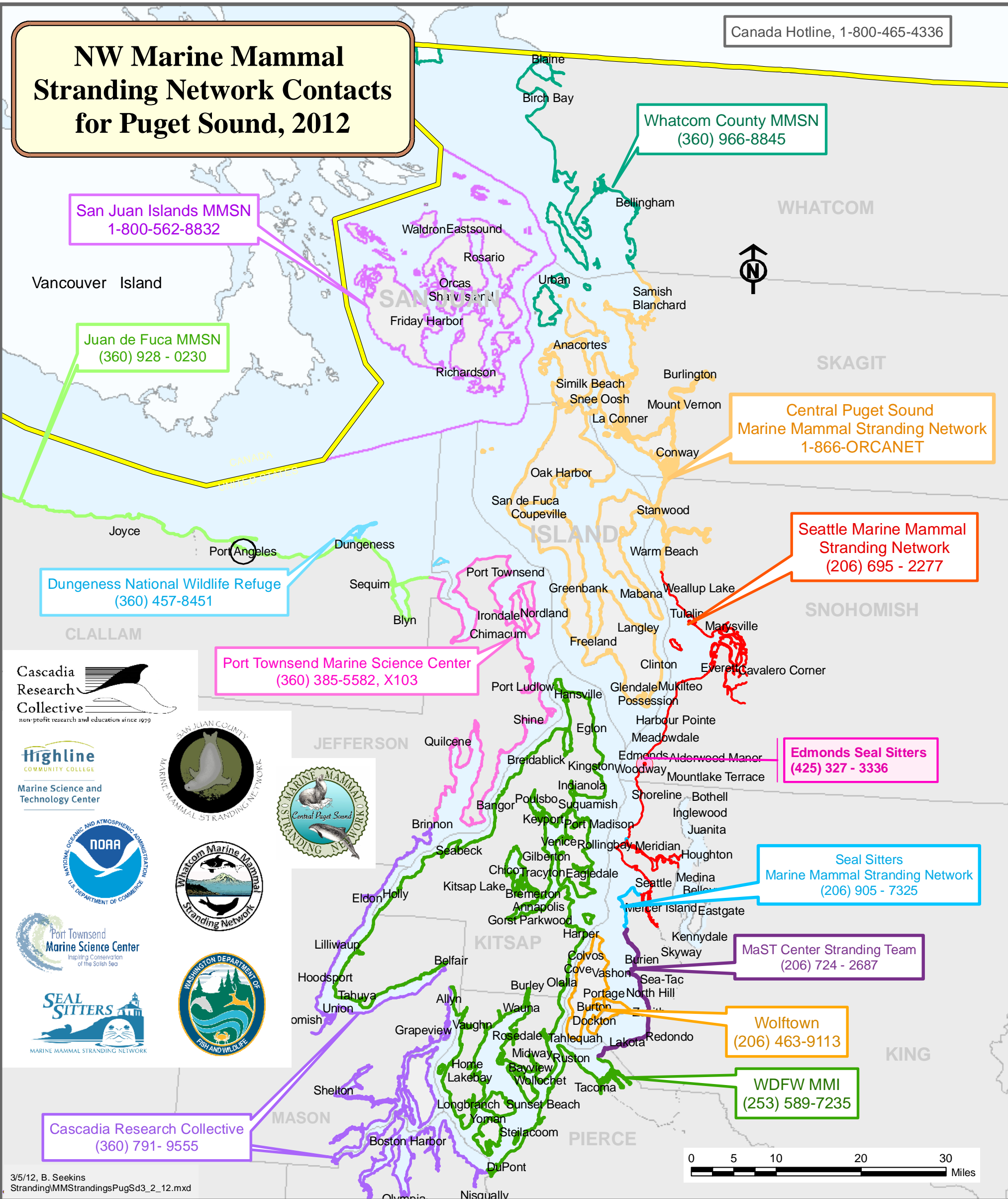


NW Marine Mammal Stranding Network Contacts for Puget Sound, 2012



3/5/12, B. Seekins
Stranding\MMStrandings\PugSd3_2_12.mxd

NOAA Enforcement and Marine Mammal Stranding Hotline:
1-800-853-1964

Data Sources;

NOAA Fisheries / NW Region, Information Technology (Portland Office) produced most of the Marine Mammal Stranding Network shoreline segment designations using text descriptions in conjunction with NOAA's Medium Resolution Shorelines and county boundaries from the Interior Columbia Basin Ecosystem Management Project (ICBEMP).

Dungeness National Wildlife Refuge;
U.S. Fish and Wildlife Service, Division of Realty & Refuge Information

U.S. Exclusive Economic Zone (1995): NOAA, Special Projects Office

Canadian Shoreline;
Global Self-Consistent, Hierarchical, High-resolution Shoreline Database (1999), P. Wessel & W.H.F.Smith

Legend

- Edmonds Seal Sitters, (425) 327 - 3336
- Port Angeles, Olympic Coast National Marine Sanctuary Office (360) 457-6622
- Seattle Marine Mammal Stranding Network, (206) 695 - 2277
- Seal Sitters Marine Mammal Stranding Network, (206) 905 - 7325
- MaST Center Stranding Team, (206) 724 - 2687
- East Jefferson County, Port Townsend Marine Science Center, (360) 385 - 5582, X103
- Vashon, Maury Islands, Wolfstown, (206) 463 - 9113
- Whatcom Marine Mammal Stranding Network, (360) 966 - 8845
- Juan de Fuca Marine Mammal Stranding Network, (360) 928 - 0230
- WDFW Marine Mammal Investigations, (253) 589-7235
- Cascadia Research Collective, (360) 791- 9555
- Dungeness National Wildlife Refuge Protection Island, (360) 457-8451
- Central Puget Sound, Marine Mammal Stranding Network, 1-866-ORCANET
- Exclusive Economic Zone Boundary
- Canada
- San Juan Islands, The Whale Museum, 1-800-562-8832
- County Boundaries