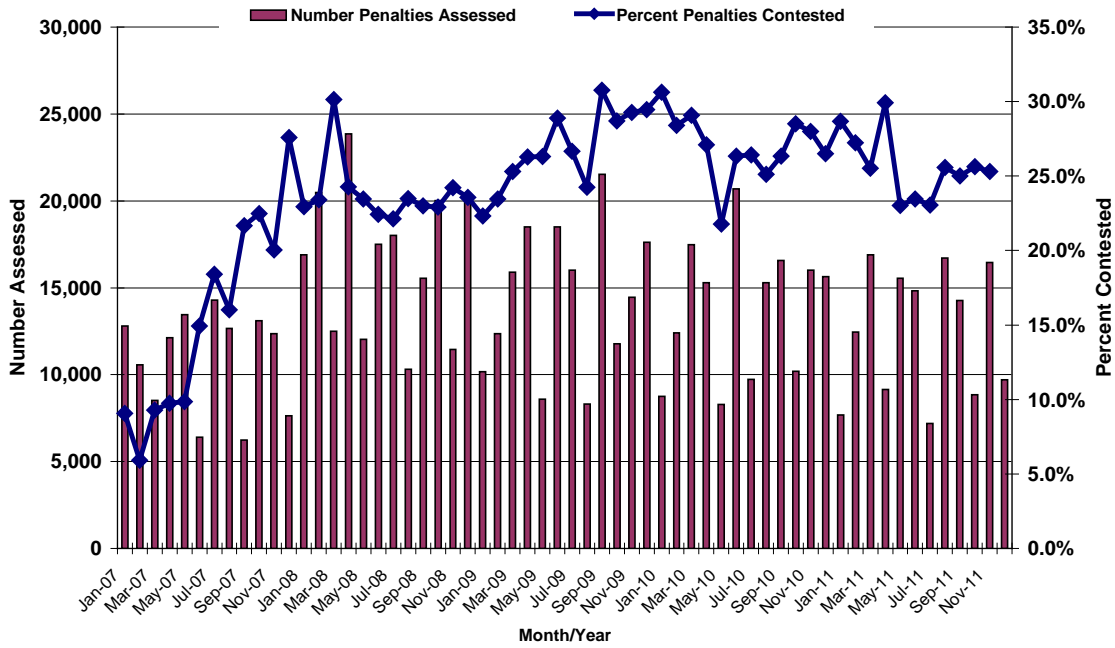
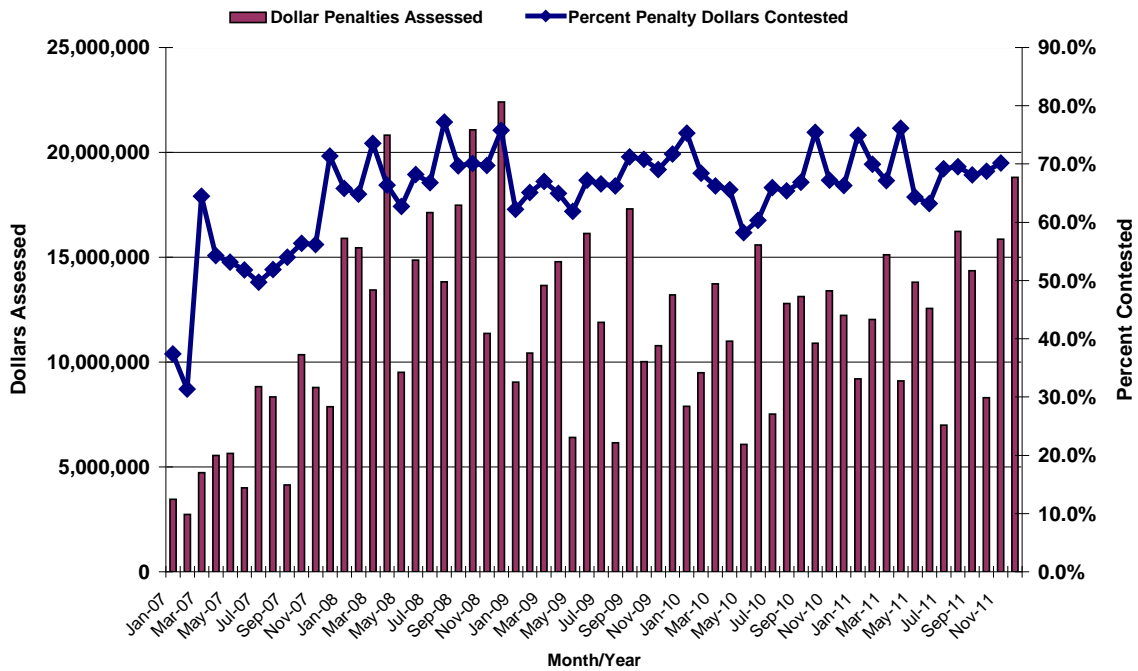


Number of Penalties Assessed and Percent Contested
 January 2007 - December 2011 (as of 03/01/2012)



Penalty Dollars Assessed and Percent Contested
 January 2007 - December 2011 (as of 03/01/2012)



Civil Penalties Assessed and Contested - January 2007 to December 2011
(as of 03/01/2012)

Month Assessed	Year Assessed														
	CY 2007			CY 2008			CY 2009			CY 2010			CY 2011		
	Number of Violations Assessed	Number of Penalties Contested	Percent Contested	Number of Violations Assessed	Number of Penalties Contested	Percent Contested	Number of Violations Assessed	Number of Penalties Contested	Percent Contested	Number of Violations Assessed	Number of Penalties Contested	Percent Contested	Number of Violations Assessed	Number of Penalties Contested	Percent Contested
Jan.	12,794	1,161	9.1%	16,908	3,881	23.0%	10,172	2,271	22.3%	8,760	2,684	30.6%	7,692	2,206	28.7%
Feb.	10,572	625	5.9%	20,480	4,791	23.4%	12,370	2,901	23.5%	12,416	3,528	28.4%	12,461	3,395	27.2%
Mar.	8,516	791	9.3%	12,493	3,765	30.1%	15,888	4,019	25.3%	17,472	5,082	29.1%	16,908	4,314	25.5%
Apr.	12,119	1,181	9.7%	23,852	5,793	24.3%	18,508	4,867	26.3%	15,297	4,145	27.1%	9,154	2,739	29.9%
May	13,455	1,325	9.8%	12,035	2,822	23.4%	8,580	2,257	26.3%	8,279	1,802	21.8%	15,544	3,581	23.0%
June	6,390	955	14.9%	17,493	3,922	22.4%	18,511	5,348	28.9%	20,692	5,452	26.3%	14,835	3,480	23.5%
July	14,285	2,628	18.4%	18,007	3,987	22.1%	16,003	4,265	26.7%	9,739	2,572	26.4%	7,188	1,657	23.1%
Aug.	12,668	2,031	16.0%	10,307	2,421	23.5%	8,305	2,013	24.2%	15,281	3,838	25.1%	16,703	4,271	25.6%
Sept.	6,244	1,353	21.7%	15,550	3,576	23.0%	21,532	6,624	30.8%	16,581	4,369	26.3%	14,259	3,564	25.0%
Oct.	13,108	2,947	22.5%	20,007	4,584	22.9%	11,775	3,380	28.7%	10,186	2,905	28.5%	8,842	2,267	25.6%
Nov.	12,356	2,477	20.0%	11,442	2,772	24.2%	14,443	4,228	29.3%	16,015	4,483	28.0%	16,461	4,164	25.3%
Dec.*	7,624	2,104	27.6%	20,031	4,720	23.6%	17,618	5,190	29.5%	15,648	4,145	26.5%	9,697	1,907	19.7%
Total	130,131	19,578	15.0%	198,605	47,034	23.7%	173,705	47,363	27.3%	166,366	45,005	27.1%	149,744	37,545	25.1%

Month Assessed	Year Assessed														
	CY 2007			CY 2008			CY 2009			CY 2010			CY 2011		
	Dollars Assessed	Dollars Contested	Percent Contested	Dollars Assessed	Dollars Contested	Percent Contested	Dollars Assessed	Dollars Contested	Percent Contested	Dollars Assessed	Dollars Contested	Percent Contested	Dollars Assessed	Dollars Contested	Percent Contested
Jan.	\$3,458,811	\$1,293,123	37.4%	\$15,895,036	\$10,456,497	65.8%	\$9,051,835	\$5,630,531	62.2%	\$7,897,330	\$5,947,673	75.3%	\$9,206,805	\$6,901,199	75.0%
Feb.	\$2,728,994	\$856,305	31.4%	\$15,454,431	\$10,024,193	64.9%	\$10,439,328	\$6,794,365	65.1%	\$9,491,858	\$6,492,400	68.4%	\$12,022,604	\$8,413,976	70.0%
Mar.	\$4,732,526	\$3,049,761	64.4%	\$13,439,002	\$9,884,328	73.5%	\$13,648,807	\$9,144,807	67.0%	\$13,729,670	\$9,093,591	66.2%	\$15,119,625	\$10,152,467	67.1%
Apr.	\$5,541,195	\$3,007,051	54.3%	\$20,822,392	\$13,827,313	66.4%	\$14,786,450	\$9,609,329	65.0%	\$10,994,915	\$7,215,069	65.6%	\$9,100,970	\$6,931,122	76.2%
May	\$5,642,618	\$2,999,252	53.2%	\$9,515,195	\$5,965,808	62.7%	\$6,409,644	\$3,964,719	61.9%	\$6,081,695	\$3,542,333	58.2%	\$13,804,440	\$8,882,520	64.3%
June	\$4,010,956	\$2,079,170	51.8%	\$14,870,743	\$10,142,875	68.2%	\$16,127,055	\$10,844,034	67.2%	\$15,591,332	\$9,405,970	60.3%	\$12,554,857	\$7,935,137	63.2%
July	\$8,826,320	\$4,385,967	49.7%	\$17,137,581	\$11,448,270	66.8%	\$11,901,653	\$7,928,411	66.6%	\$7,517,648	\$4,959,321	66.0%	\$6,997,684	\$4,842,959	69.2%
Aug.	\$8,335,373	\$4,325,173	51.9%	\$13,837,121	\$10,680,270	77.2%	\$6,151,149	\$4,075,504	66.3%	\$12,787,739	\$8,361,984	65.4%	\$16,236,724	\$11,294,979	69.6%
Sept.	\$4,145,799	\$2,239,663	54.0%	\$17,479,179	\$12,182,854	69.7%	\$17,303,604	\$12,322,151	71.2%	\$13,133,831	\$8,785,930	66.9%	\$14,363,866	\$9,783,969	68.1%
Oct.	\$10,346,789	\$5,833,330	56.4%	\$21,075,681	\$14,775,748	70.1%	\$10,026,302	\$7,098,930	70.8%	\$10,899,142	\$8,225,560	75.5%	\$8,303,644	\$5,709,887	68.8%
Nov.	\$8,787,643	\$4,934,924	56.2%	\$11,364,460	\$7,929,893	69.8%	\$10,779,947	\$7,442,494	69.0%	\$13,400,493	\$9,007,579	67.2%	\$15,855,820	\$11,121,800	70.1%
Dec.*	\$7,874,587	\$5,621,783	71.4%	\$22,401,150	\$16,984,448	75.8%	\$13,209,826	\$9,473,167	71.7%	\$12,236,321	\$8,114,426	66.3%	\$18,803,652	\$5,130,660	27.3%
Total	\$74,431,611	\$40,625,502	54.6%	\$193,291,971	\$134,302,497	69.5%	\$139,835,600	\$94,328,442	67.5%	\$133,761,974	\$89,151,836	66.6%	\$152,370,691	\$97,100,675	63.7%

*Includes all violations for which a contest was received, regardless of whether the contest was received within 30 days after receipt of the proposed civil penalty as required by the Mine Act.