



# Weekly Progress



AMERICAN RECOVERY & REINVESTMENT ACT

Week Ending Jan. 21, 2011



CHPRC-01164

Contract DE-AC06-08RL14788  
Modification MO47

---

# Contents

OVERVIEW.....	3
SUMMARY.....	4
ACCOMPLISHMENTS.....	5
RL-0011 Nuclear Materials Stabilization & Disposition.....	5
RL-0011.R1: Plutonium Finishing Plant D&D.....	5
RL-0013 Solid Waste Stabilization & Disposition.....	5
RL-0013C:R1.1: Mixed Low-Level Waste/Low-Level Waste Treatment.....	7
RL-0013C:R1.2: Transuranic Waste.....	7
RL-0030 Soil & Groundwater Remediation, Groundwater/Vadose Zone.....	7
RL-0030.R1: Central Plateau Soil & Groundwater.....	10
RL-0040 Nuclear Facility D&D – Remainder of Hanford.....	11
RL-0040.R1.1: U Plant/Other D&D.....	11
RL-0040.R1.2: Outer Zone D&D/Waste Sites.....	12
RL-0041 Nuclear Facility D&D – River Corridor Closure Project.....	19
RL-0041.R1.1: 100K Area Remediation.....	21
UPCOMING EVENTS.....	24

## OVERVIEW

CH2M HILL Plateau Remediation Company (CHPRC) is using funds from the American Recovery and Reinvestment Act (Recovery Act) to accelerate critical environmental cleanup across the Central Plateau and the 100K Area along the Columbia River to help pursue the U.S. Department of Energy (DOE) “2015 Vision” to shrink the Hanford Site cleanup footprint.

### RL-0011 PLUTONIUM FINISHING PLANT D&D

CHPRC is accelerating critical decontamination and decommissioning work to cleanout and prepare the Plutonium Finishing Plant (PFP) for demolition by 2013, three years ahead of the Tri-Party Agreement milestone of September 2016.

### RL-0013 SOLID WASTE STABILIZATION & DISPOSITION

CHPRC is accelerating cleanup of Hanford’s legacy waste and fuels, including retrieving, repackaging, and shipping transuranic (TRU) waste and shipping mixed low-level waste (MLLW) and low-level waste (LLW) for treatment and/or disposal.

### RL-0030 SOIL & GROUNDWATER REMEDIATION

In the ongoing effort to protect the Columbia River, CHPRC is constructing two groundwater treatment facilities; installing 265 wells for monitoring, extracting, and remediating groundwater; and decommissioning 280 wells that are no longer of service.

### RL-0040 NUCLEAR FACILITY D&D REMAINDER OF HANFORD

Across the Central Plateau and along the outer zone of the Hanford Site, CHPRC is remediating 24 waste sites and decommissioning and demolishing (D&D) 34 facilities to reduce mortgage, surveillance, and maintenance costs on buildings that are no longer of service. The scope also includes cleanup along the outermost edges of the Hanford Site at the Arid Lands Ecology (ALE) Reserve and North Slope, preparing the U Plant for a first-of-its-kind canyon demolition, and preparing to disposition radioactive railcars in the 200 North Area.

### RL-0041 100K AREA REMEDIATION

CHPRC is demolishing 15 reactor support facilities and sampling and/or remediating 23 waste sites to shrink the cleanup footprint of two reactors, K East and K West, located in the 100K Area along the Columbia River.

## For More Information

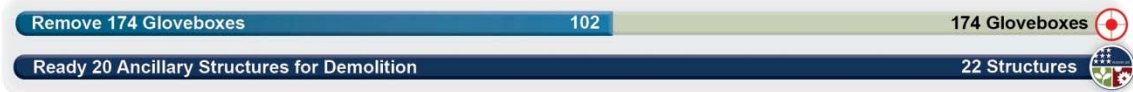
To find out more about Recovery Act progress at the Hanford Site, visit [www.hanford.gov/recovery](http://www.hanford.gov/recovery).

For information about CHPRC, including weekly Recovery Act newsletters and videos, visit [www.plateauremediation.hanford.gov](http://www.plateauremediation.hanford.gov) or contact [chprcc@rl.gov](mailto:chprcc@rl.gov).

## SUMMARY

The following chart outlines CHPRC’s progress on its main Recovery Act work goals. Progress on subprojects and other Recovery Act-funded activities are detailed throughout this report and accompanied by a short progress video available on [www.youtube.com/hanfordplateau](http://www.youtube.com/hanfordplateau).

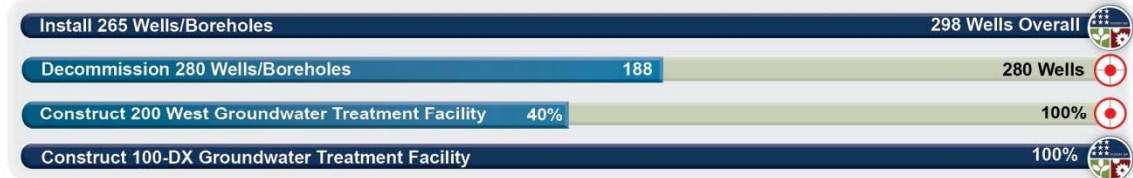
### PLUTONIUM FINISHING PLANT D&D



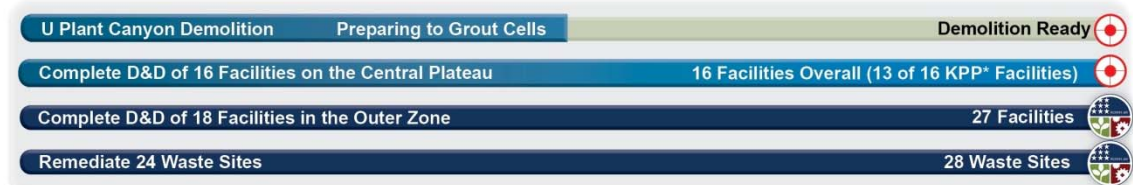
### SOLID WASTE STABILIZATION & DISPOSITION



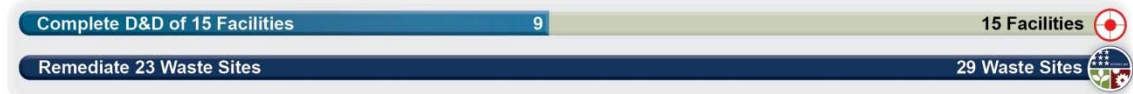
### SOIL & GROUNDWATER REMEDIATION



### NUCLEAR FACILITY D&D



### 100K AREA REMEDIATION



\*Key Performance Parameters (KPP) are specific items (wells, buildings, etc.) included in the Target. "Overall" indicates the total number completed with Recovery Act funds. "Completed" marks that CH2M HILL has completed a KPP.

## ACCOMPLISHMENTS

### RL-0011 Nuclear Materials Stabilization & Disposition

RL-0011.R1: Plutonium Finishing Plant D&D

ACTIVITY	PFP WASTE REMOVAL & DISPOSITION	
	<i>Week of Jan. 21, 2011</i>	<i>Completed to Date with Recovery Act funding</i>
Gloveboxes/hoods removed	1 glovebox	102 gloveboxes/hoods
MLLW/LLW shipped	7 m <sup>3</sup>	2,325 m <sup>3</sup>
TRU shipped	-	376 m <sup>3</sup>
Non-radioactive waste shipped	-	23 m <sup>3</sup>
Process transfer line removed	-	346 feet
Process vacuum system piping removed	27 feet	653 feet
Asbestos removed	260 feet	13,057 feet

#### *Process and Laboratory Areas*

Gloveboxes and hoods now remain in only 4 of the 30 rooms in the Analytical, Standards, and Process Development Laboratories and backside vaults.

In the RMA/RMC Lines, equipment removal from the HC-4 conveyor glovebox is complete. Preparations are under way to remove an airlock from the end of the glovebox to facilitate removal of the last two sections of the 70-foot long HA-28 conveyor glovebox. The second application of the recently deployed Aspigel® decontamination agent has been delayed while issues are resolved regarding plugging of the spray equipment.

#### *2736-Z/ZB Vault Complex*

Equipment removal was completed from glovebox 642-B, which was formerly used for high temperature plutonium stabilization furnace operations. The glovebox was isolated from building ventilation and removed for non-destructive assay. Process equipment removal was also completed from glovebox 642-A, the last of nine boxes in the vault support complex; chemical decontamination of the box is under way.

#### *242-Z Americium Recovery Facility*

Intrusive D&D was initiated for the first time in the 242-Z building, beginning with removal of miscellaneous waste from glovebox WT-5. The team also began preparing for the removal of window panels in WT-4 and WT-5 to support more efficient equipment removal.

#### *Infrastructure, support systems, and equipment removal*

Five gloveboxes previously removed from the 234-5Z and 2736-ZB buildings were loaded for shipment out of PFP; three of these will be size reduced and packaged for offsite disposal as TRU waste and two will be treated and packaged for onsite disposal as LLW at the Environmental Restoration Disposal Facility. Three drain line trenches under the 234-5Z laboratory process areas were grouted, completing the first phase of trench stabilization, and the work package was approved for phase 2, which includes 10 additional trenches.



*Two hoods recently removed from the Analytical Laboratory are loaded into a shipping container at the Plutonium Finishing Plant.*

Photo 1



Photo 2

A section of a glovebox from Room 230C of the Plutonium Finishing Plant's RMC processing area is wheeled out of the facility for offsite treatment and size reduction.

## RL-0013 Solid Waste Stabilization & Disposition

RL-0013C:R1.1: Mixed Low-Level Waste/Low-Level Waste Treatment

ACTIVITY	SOLID WASTE STABILIZATION & DISPOSITION <i>Total Completed with Recovery Act funds</i>
Ship 1,800 m <sup>3</sup> of MLLW/LLW for treatment and disposal	<ul style="list-style-type: none"> <li>• 1,107 m<sup>3</sup> shipped                             <ul style="list-style-type: none"> <li>○ 1,006 m<sup>3</sup> treated and disposed</li> <li>○ 101 m<sup>3</sup> at offsite treatment facilities awaiting processing. Treatment is scheduled for FY11</li> </ul> </li> </ul>

Two shipments were made from the Central Waste Complex (CWC) to Perma-Fix Northwest (PFNW) on Jan. 18. The first was a LLW debris shipment (5.2 m<sup>3</sup>) of 17 drums and one standard waste box sent to PFNW for volume reduction and radiological stabilization. The second was a MLLW debris shipment (1.4 m<sup>3</sup>) of six drums sent to PFNW for macroencapsulation. Treated residues from both shipments will be returned to Hanford for disposal in the Mixed Waste Disposal Units at the Low-Level Burial Grounds.

## RL-0013C:R1.2: Transuranic Waste

ACTIVITY	SOLID WASTE STABILIZATION & DISPOSITION <i>Total Completed with Recovery Act funding</i>
Retrieve 2,500 m <sup>3</sup> of suspect TRU waste	• 169 m <sup>3</sup> are staged, pending shipment • 843 m <sup>3</sup> shipped to a treatment, storage, or disposal facility
Retrieve 50 m <sup>3</sup> of suspect remote-handled TRU waste	• 43 m <sup>3</sup> are staged, pending shipment. • 1 m <sup>3</sup> shipped to a treatment, storage, or disposal facility

In the 3A burial ground, portable assay was completed on Box 19 of Trench 17. Initial fogging was completed and a temporary cover was staged for Box 27, also in Trench 17. A work package was developed to allow hand excavation in a high contamination/airborne radiation area at west end of Trench 17; excavation of containers then continued using this work package. The remaining ground-thawing equipment was received and a procedure drafted for operation and deployment of the system.

Five headers and three tanks (totaling 6.8 m<sup>3</sup>) were removed from Trench 11 of the 4B burial ground.

At the 12B burial ground, the top three feet of overburden were removed from Trench 27 in preparation for a second ground-penetrating radar scan. Excavation began at Trench 17 inside the Weather Enclosure.



Photo 3

Excavators remove overburden from Trench 11 at the 4B burial ground.





Photo 4

A close-up on a pipe header and small metal tank being excavated from Trench 11 of the 4B burial ground.

*TRU Repackaging & Shipments*

ACTIVITY	SOLID WASTE STABILIZATION & DISPOSITION <i>Total Completed with Recovery Act funding</i>
Repackage 850 m <sup>3</sup> of WIPP certifiable TRU waste	• 653 m <sup>3</sup> have been repackaged
Disposition 2,000 m <sup>3</sup> of contacted-handled TRU waste	• 896 m <sup>3</sup> have been disposed

CHPRC completed eight TRUPACT-II shipments to the Idaho facility for compaction and shipment to the Waste Isolation Pilot Plant in New Mexico.

## RL-0030 Soil & Groundwater Remediation, Groundwater/Vadose Zone

RL-0030.R1: Central Plateau Soil & Groundwater

ACTIVITY	WELL DRILLING & DECOMMISSIONING	
	<i>Week of Jan. 21, 2011</i>	<i>Complete to Date with Recovery Act funds</i>
Install 265 wells and/or boreholes along the river and in the Central Plateau	5 wells completed 12 wells in progress	298
Decommission 280 old wells and boreholes that are no longer of service	Planning in progress	186

CHPRC completed the last of the 17 wells planned for installation with Recovery Act funds in the 200-ZP-1 operable unit, completing the Key Performance Parameter for well drilling. These wells will support the 200 West Groundwater Treatment Facility.

### *200 West Groundwater Treatment Facility*

The project poured approximately 351 cubic yards of concrete, bringing the project-to-date total to approximately 8,250 cubic yards placed. Construction of the process and transfer facilities included (listed by facility):

- **Radiological Building:** Inside grading, rough-in electrical, temporary heat, and fire protection installation are complete with ongoing equipment pad installation and overhead pipe support installation in progress.
- **Bio Process Building:** Sanitary water line testing ongoing this week. Wall insulation and sheeting continue.
- **Bio Pad:** Installation of the equipment pad was initiated.
- **Extraction Transfer Building #1:** Installation of process piping rough-in, grading, rough-in electrical, temporary heat, fire protection, and power continued.
- **Extraction Transfer Building #2:** Completion of punchlist items continued.
- **Injection Transfer Building #1:** Initial construction is complete and installation of internal equipment will begin.
- **Injection Transfer Building #2:** Roof, wall insulation, and sheeting continued.
- **Lime Building (Sludge Stabilization System):** Structural steel and concrete detailing are under way and the Notice to Proceed was issued for structural steel procurement.



Photo 5

CHPRC subcontractor Skanska USA Build Inc. installs equipment inside the Radiological Building for the 200 West Groundwater Treatment Facility.

## RL-0040 Nuclear Facility D&D – Remainder of Hanford

### RL-0040.R1.1: U Plant/Other D&D

#### CENTRAL PLATEAU FACILITIES DEMOLISHED WITH RECOVERY ACT FUNDS

- 211U Cold Chemical Makeup Tank Farm
- 211UA Cold Chemical Makeup Tank Farm Addition
- 203UX Gas Storage Facility
- 2701M Office Bldg
- 272E Fabrication, Mockup Shop Bldg
- 2716E Power Maintenance Storage Bldg\*
- 2722W Welding Laboratory Bldg\*
- 224UA UO3 Calcination/Load-out Facility
- 2734EA Gas Cylinder Storage Bldg
- 275E Carpenter Shop Bldg
- MO104 Mobile Office
- MO405 Mobile Office
- MO840 Mobile Office
- X8 Motor Car Shed\*
- 224U UO3 Plant Concentration/Load-out Bldg
- 284WB Package Boiler Plant

TOTAL: 100,257 square feet

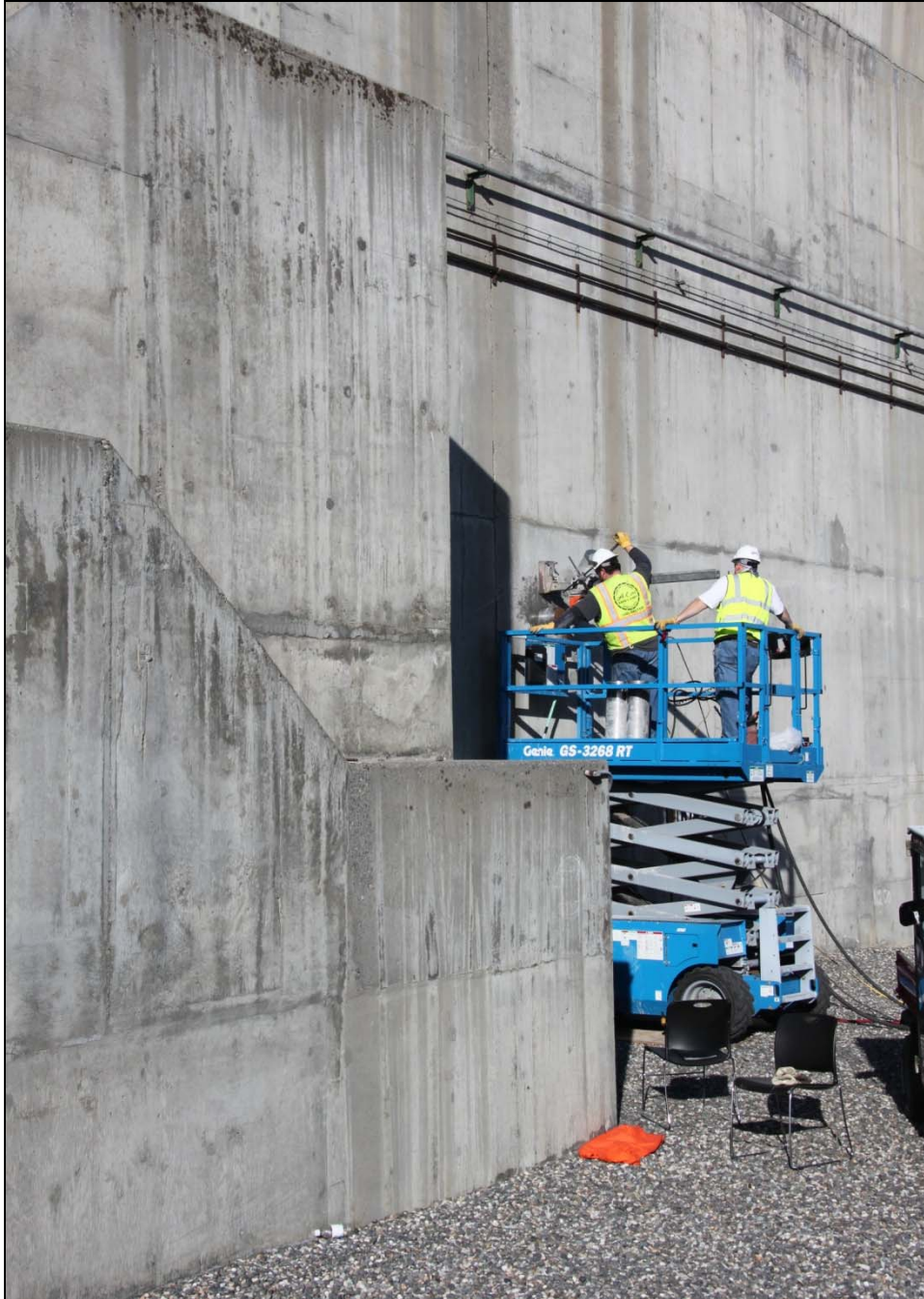
#### PLANNED FOR D&D/IN PROGRESS

- 284E Power House & Steam Plant
- 209E Critical Mass Laboratory
- 284W Power House & Steam Plant
- 2701-W Coal Handlers Shed\*
- 2902-W Water Storage Tank\*

\*Not part of the Key Performance Parameter

*U Canyon*

Core drilling is complete on the 11 planned external holes through U Canyon's five-foot-thick walls for grout conveyance access to the canyon. Construction of the on-site batch plant began, with development of grouting work packages continuing.



*CHPRC completed the last of 11 holes to be drilled through the five-foot-thick external walls of the U Canyon. The holes will provide grout conveyance access to the canyon building.*

Photo 6



Photo 7

Nearby the U Plant, CHPRC workers begin construction of a batch plant for grout that will be used to fill void spaces in the U Canyon.

#### *U Plant Ancillary Facilities*

Final surveys, site contouring, and decontamination and demobilization of demolition equipment at the U Ancillary site are complete. Closure documentation is being prepared.



Photo 8

*The former site of the 224-U and 224-UA U Plant ancillary facilities. CHPRC has completed demolition of the facilities as well as surveying and contouring of the work site.*

#### *200 East Core Industrial Area*

Asbestos abatement and cleanup in the 284-E Power House are complete, and workers demobilized from the site. Demolition preparations for the buildings exhaust chimneys and baghouses are awaiting work package clearance.

#### *200 West Area Industrial Facilities*

CHPRC subcontractor Clauss Construction and Controlled Demolition, Inc. is mobilized on site and preparing the 284-W exhaust chimneys and baghouses for the planned Feb. 16 explosive demolition. Chimneys were marked for charge placement. Workers began separating the structures from the 284-W building with shears and oxygen torches.



Photo 9

*Workers use oxygen torches to separate two exhaust chimneys from the 284-W Power House in preparation for their upcoming explosive demolition.*



Photo 10

*Workers use shears to separate structures between the 284-W Power House and an adjacent exhaust stack scheduled for demolition in mid-February.*

#### *209-E Criticality Mass Laboratory*

All but two tanks have been verified as dry. Two standard waste boxes are loaded and awaiting non-destructive assay. The HO-200 glovebox is empty and isolated, with fixative applied and awaiting cutting for removal. The HO-170 glovebox is ready to be removed; large-scale pipe removal of process pipes is expected to begin this week.



---

 RL-0040.R1.2: Outer Zone D&D/Waste Sites

 OUTER ZONE FACILITIES DEMOLISHED WITH RECOVERY ACT FUNDS
 

---

212N Storage Building	6652M Fallout Laboratory
212P Electrical Storage & Transformer Shop	6652R Acid Storage Shed
212R Storage Building	6652C Space Science Laboratory
614 Monitor Station	6652CSHED Storage Building
646 Radioecology Field Laboratory	6652D Pump House
6652G ALE Field Storage Building	6652T Fire Protection Lower Pump House
6652H ALE Laboratory 1	6652U Rattlesnake Mountain Upper Pump House
6652I ALE Headquarters	623A Plant Radio Relay Bldg
6652J ALE Laboratory II	T520-6 Navy MARS Radio Station
6652S Sentry Shed*	6631 Radio Telescope Pedestal*
6634 ENW Tower and Building*	6630 Hodges Well Pumphouse*
6635 Crown Castle/Cingular Tower and Building *	6636 Columbia Communication Tower and Building*
6637 Tri City Amateur Radio Tower and Building*	6633 Franklin County Communication Building*
6632 Verizon Telephone Enclosure*	

---

 \*Not part of the Key Performance Parameter

*North Slope Debris Removal*

Personnel with CHPRC subcontractor Sealaska Environmental Services continue debris cleanup in Areas 10, 13, 14, 16, and 18 of the North Slope.

*D&D of Railcars Located on the 212-R Rail Spur*

CHPRC workers completed visual inspections of all 11 cask cars. The Scope of Work for the lift and haul contract was released for bidding. Transportation safety documentation and planning for the next phase of work continues; comments by the Environmental Protection Agency on the Remedial Action Work Plan and Sampling Analysis Plan are being resolved.



Photo 11

Workers visually inspect the interior of a contaminated railcar in the 200 North Area of the Hanford Site. Altogether, CHPRC plans to disposition 15 contaminated railcars located on the 212-R rail spur.



Workers perform a visual inspection of a contaminated railcar in the 200 North Area of the Hanford Site. Last week CHPRC completed inspection of all 11 cask cars.

Photo 12

*Waste Sites*

The following table showcases CHPRC’s recent progress in outer zone waste remediation.

WASTE SITE IN PROGRESS	TONS OF CONTAMINATED SOIL REMOVED	
	<i>Week Ending Jan. 21, 2011</i>	<i>Total to Date with Recovery Act funds</i>
600-286/287-PL	-	14,895
200-W-147-PL	-	6,450
BC Control Area	6,500	310,000

---

Recent activities regarding the outer zone waste sites also included (listed by operable unit or site):

- *200-MG-1*
  - 600-40: Additional direct push testing is anticipated to occur in February.
  - 600-220: Retrieve, treat, and disposal (RTD) activities will be required.
  - 600-222: The Remedial Action Report has been approved by DOE-Richland Operations and is being reviewed by the Regulators.
  - 216-S-19: Analysis of laboratory results of surface sampling revealed some elevated levels of contamination above the remedial action levels. Removal of the elevated areas is anticipated next week. 216-S-26: Selection of a vendor was completed with a notice to proceed issued on Jan. 7. Site walk downs were conducted and a kick-off meeting was held with the vendor.
  - 600-281: Confirmatory Sampling – No Further Action sampling was performed and RTD will be required.
  - 200-W-147-PL: Excavation is complete. Preparations for initial verification sampling are in process.
- *200-CW-3*
  - 216-N-4: The remaining site verification package (RSVP) is being prepared. CHPRC is backfilling the waste site.
  - 216-N-6: The RSVP is being prepared. Radiological Operations completed site down-posting.
  - 600-286-PL: Remediation is complete. Analytical results indicated the RTD is complete. The site has been down-posted and backfill is under way.
  - 600-287-PL: Remediation is complete. Analytical results indicate the RTD is complete. The site has been down-posted.
- *BC Control Area*
  - For Zone A, approximately 123 acres have been excavated and surveyed.
  - For Zone B, radiological down-posting surveys are ongoing.



Photo 13

A worker communicates via radio with operators backfilling the 216-N-4 waste site.

## RL-0041 Nuclear Facility D&D – River Corridor Closure Project

### RL-0041.R1.1: 100K Area Remediation

#### 100K AREA FACILITIES DEMOLISHED WITH RECOVERY ACT FUNDS

- 183KW Chlorine Vault
- 183.1KW Headhouse
- 183.3KW Filter Basin
- 183.7 KW Pipe Tunnel
- 110KE Gas Storage Facility
- 116KE Reactor Exhaust Stack
- 118KE Horizontal Control Rod Storage
- MO048 Construction Lunch Trailer
- MO969 Ops/HPT Change Trailer

TOTAL: 485,643 square feet

#### PLANNED FOR D&D/IN PROGRESS

- 183.4KW Clearwell
- 190KW Main Pump House
- 183.4KE Clearwell
- 115KE Gas Recirculation (subgrade structures)
- 117KE Exhaust Air Filter (subgrade structures)
- 190KE Main Pump House
- 1605KE Guard House
- 181KE River Pump House

#### Facility D&D

At the 181-KE River Pump House Structure, CHPRC subcontractor Federal Engineers and Constructors began construction of an access road to the demolition site, in accordance with boundaries set by the Pacific Northwest National Laboratory archaeologists to ensure that an adjacent site of significance is not disturbed by the project.



Photo 14

*CHPRC subcontractor Federal Engineers and Constructors begins construction of a road to provide access to the 181-KE River Pump House work site. CHPRC plans to use Recovery Act funds to demolish the 181-KE River Pump House, which once supported reactor operations with river intake water.*



Photo 15

*Workers remove fencing in preparation for construction of a road to provide access for demolition of the 181-KE River Pump House.*

#### *Infrastructure Utilities Upgrade Project*

The second of two grounding wells for the new A9 substation was drilled to a depth of 130 feet of a planned total depth of 189 feet. Following the successful operations test of the microfiltration system, the water storage tank was drained and National Fire Protection Association compliant level and temperature sensors were added to the tank. The fire alarm system is installed with only minor adjustments remaining. Phone and data wiring is being installed in the plant.



Photo 16

*Drilling continues on one of two grounding wells that will support the A9 substation in the 100K Area. The substation will provide electricity to the 100K Area, allowing existing infrastructure to be removed or rerouted to facilitate future demolition and remediation activities.*

#### *Waste Sites*

CHPRC continued excavating soils from the 100-K-42 waste site associated with the 105-KE Reactor Discharge Chute, for a total of 549 tons removed last week for a total of more than 18,500 tons removed to date. Planning for the remediation of the 100-K-57 waste site continued.

## UPCOMING EVENTS

### RL-0011 Nuclear Materials Stabilization & Disposition

RL-0011.R1: Plutonium Finishing Plant D&D

- Complete decontamination and remove the last glovebox from the 2736-ZB building.
- Complete equipment removal from the last two gloveboxes in the Analytical Laboratory.
- Complete D&D and remove gloveboxes 2, 3, 4, 6, and 9 from room 179 of the Plutonium Process Development Laboratory.
- Complete Surface Contaminated Object surveys and finalize criteria for dispositioning glovebox HA-46 in the RMA Line.





- Complete decontamination of gloveboxes HA-19B1 and B2 with Aspigel® and determine its effectiveness as an alternate decontamination process.
- Complete cleanout and remove conveyor gloveboxes HC-3 and HC-4 in the RMC Line.
- Complete size reduction and packaging of gloveboxes 139-3 and 139-4.
- Continue removing process vacuum, process transfer piping, and asbestos insulation from throughout the 234-5Z building.

## RL-0013 Solid Waste Stabilization & Disposition

### RL-0013C:R1.1: MLLW Treatment

- One MLLW shipment (11.6 m<sup>3</sup>) planned from CWC to PFNW.

### RL-0013C:R1.2: TRU Waste

- TRU Retrieval
  - 3A burial ground:
    - Mitigate contamination at Trench 17 Box 27, remove cover, and fog under tarps; then begin repairs and excavation around the box.
    - Complete excavation, removal, and portable assay of Trench 17 Boxes 21, 17, and 14.
    - Ship Trench 8 Box 33 (49.1 m<sup>3</sup>) to CWC.
  - 4B/4C burial ground:
    - Excavate around and remove metal box (~6.8 m<sup>3</sup>) in Trench 11.
    - Excavate to remove two tanks and three concrete boxes from Trench 11.
    - Begin portable assay of removed headers and tanks from Trench 11.
    - Continue Trench 11 excavating east to pothole, expose, and remove three small concrete boxes; overpack these boxes into concrete shielded overpacks.
    - Begin excavating the east end of the Trench 11 to expose two drums and to hand excavate around concrete box #105.
    - Approve mobile Drum Venting System procedure SW-100-154 and complete preventative maintenance work packages.
  - 12B burial ground:
    - Complete second ground-penetrating radar scan of Trench 17.
    - Continue excavating and begin removal of containers from Trench 17.
    - Close out any open actions from the Contractor Readiness Assessment.
- TRU Repack
  - Four planned shipments.
- Suspect TRU Waste Shipments
  - No planned shipments.

## RL-0030 Soil & Groundwater Remediation, Groundwater/Vadose Zone

### RL-0030.R1: Central Plateau Soil & Groundwater

- Continue construction of the 200 West Groundwater Treatment Facility.
- Continue well drilling and decommissioning.

---

## RL-0040 Nuclear Facility D&D – Remainder of Hanford

### RL-0040.R1.1: U Plant/Other D&D

- Continue construction of the on-site batch plant.
- Submit closure documentation for the U Ancillary facilities.
- Further separate 284-W exhaust chimneys and baghouses from Power House structure and continue preparations for demolition.
- Begin drilling for charge placement and preparatory work at 284-E Power House.
- Remove gloveboxes HO-200 and HO-170 from the 209-E Criticality Mass Laboratory.

### RL-0040.R1.2: Outer Zone D&D/Waste Sites

- Continue debris removal at the North Slope.
- Continue preparations for disposition of 15 contaminated railcars.
- Continue backfilling the 216-N-4 and 216-N-6 waste sites.
- Continue remediation of BC Control Area and 200-MG-1 and 200-CW-3 waste sites.

## RL-0041 Nuclear Facility D&D – River Corridor Closure Project

### RL-0041.R1.1: 100K Area Remediation

- Complete construction of access road for demolition of 181-KE River Pumphouse structure.
- Continue drilling on the second of two grounding wells for the A9 substation.
- Perform modifications to the multi-purpose water storage tank and punchlist items for the micro-filtration system.
- Continue excavating soil from 100K Area waste sites.