



2015 Vision



Multi-Canister Overpack at K Basin



Interior of Plutonium Reclamation Facility canyon area



River Corridor 300 Area



308 Building Demolition





River Corridor 618-10

- Trench remediation continues
 - Removed more than 175 drums
 - 98 of 175 drums were concrete lined
- Began bottle crushing March 21, 2012
 - Thousands are anticipated to be recovered
 - Cost savings



Depleted Uranium Drum



618-10 Bottle Crushing Mock-up

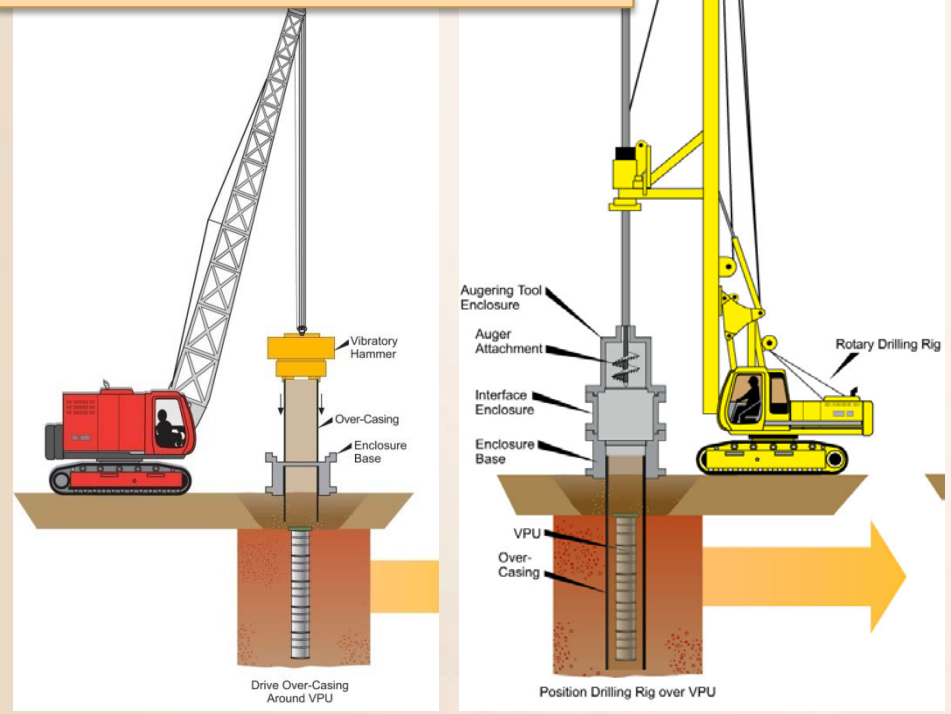


River Corridor 618-11

- Contract awarded for infrastructure set-up in 2012
- Working with Energy Northwest on Nuclear Regulatory Commission license application



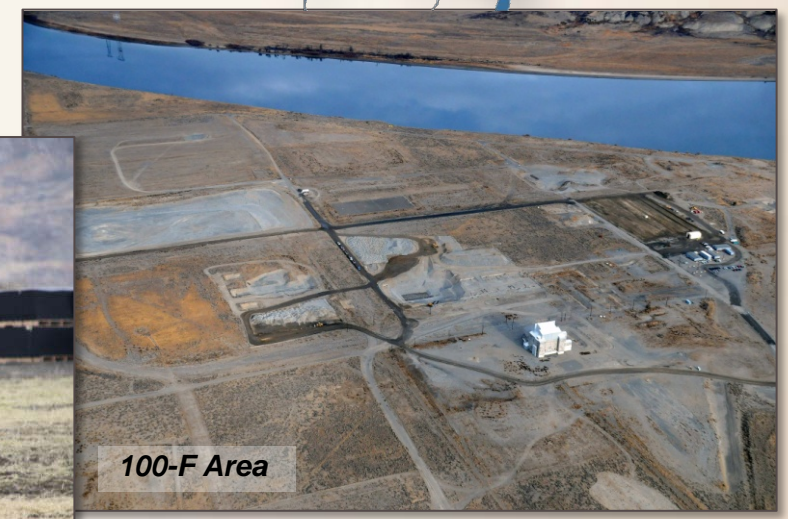
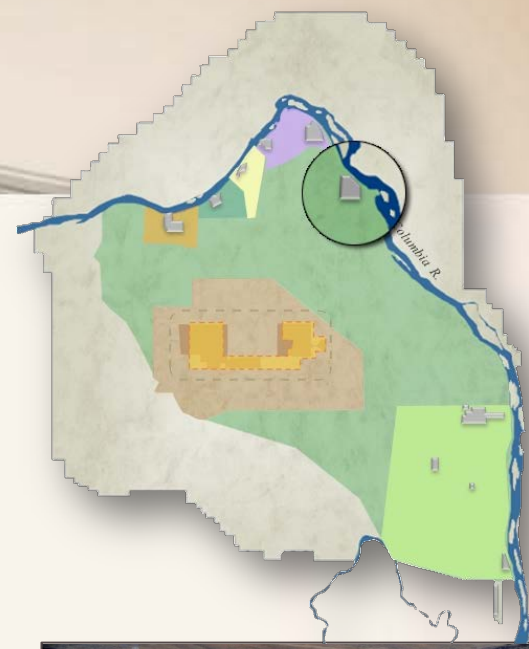
Technology development for Vertical Pipe Unit (VPU) removal (618-10/11)





River Corridor F Area

- Hanford's first reactor area to be completed
- Field work at 100-F Reactor is complete pending closeout sampling results
- Greater volume of chromium contaminated soil was found at 100-F-57 waste site



100-F Area



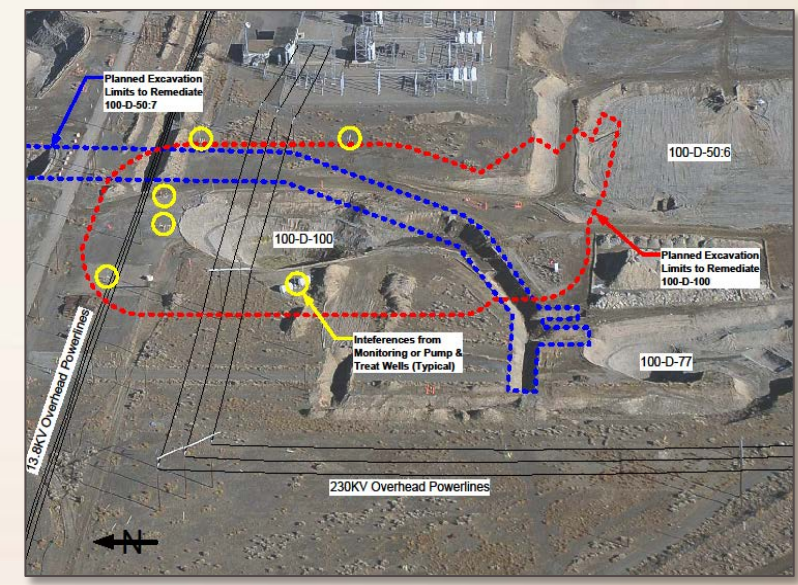
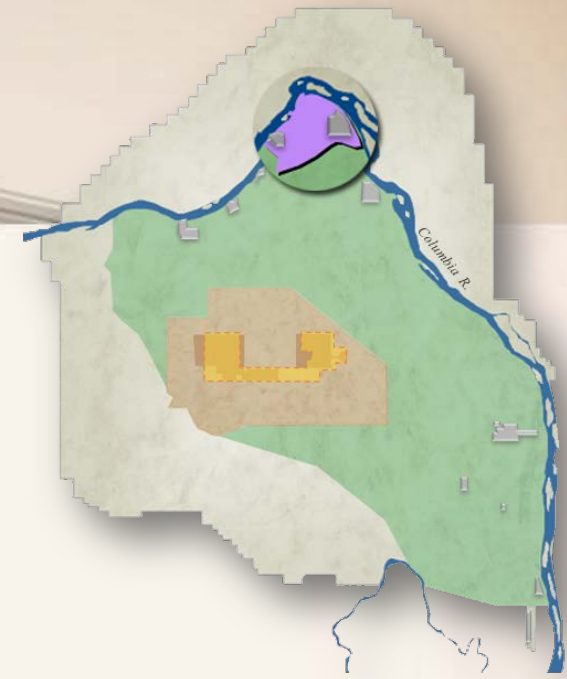
100-F Area Re-vegetation



River Corridor D & H Area

Soil & Groundwater Remediation

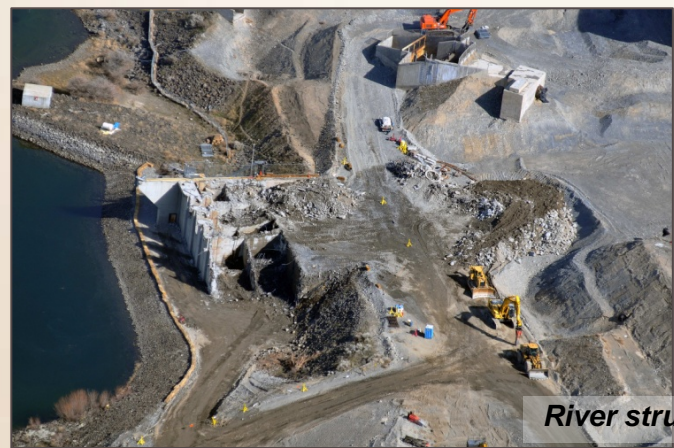
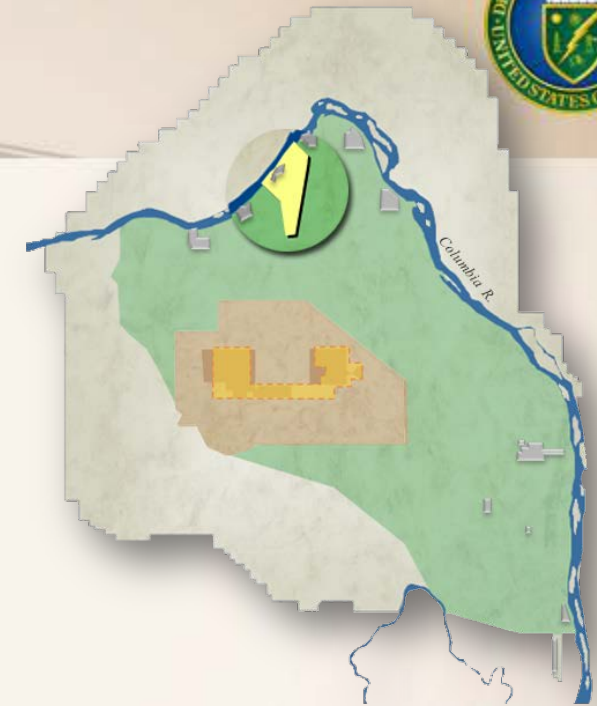
- Excavation of deep chromium waste sites (100-D-100/104) completed to 55 feet
- Power line and groundwater wells require relocation to access deep vadose zone chromium contamination at 100-D-100





River Corridor N Area

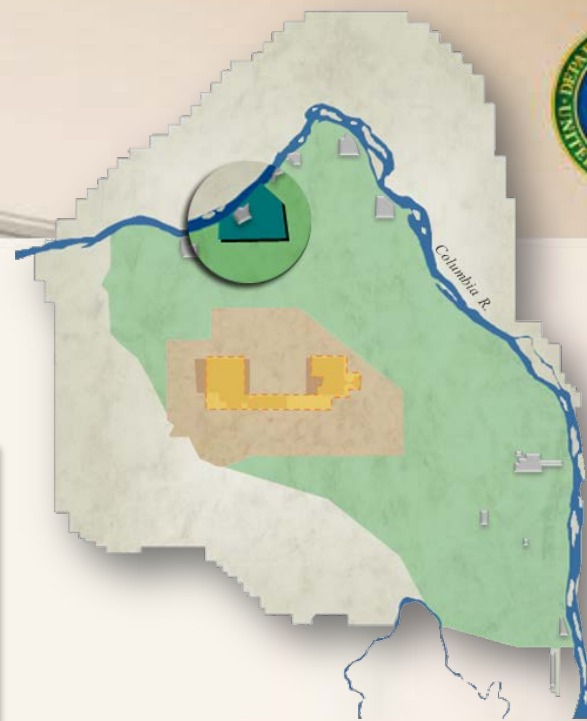
- River Structures
 - Demolition is well underway
- Reactor Cocooning 3 months ahead of TPA milestone
- Demolition of Fuels Storage Basin Completed
 - Workers completed high radiation work well below ALARA forecast



River structure demolition



River Corridor K Area





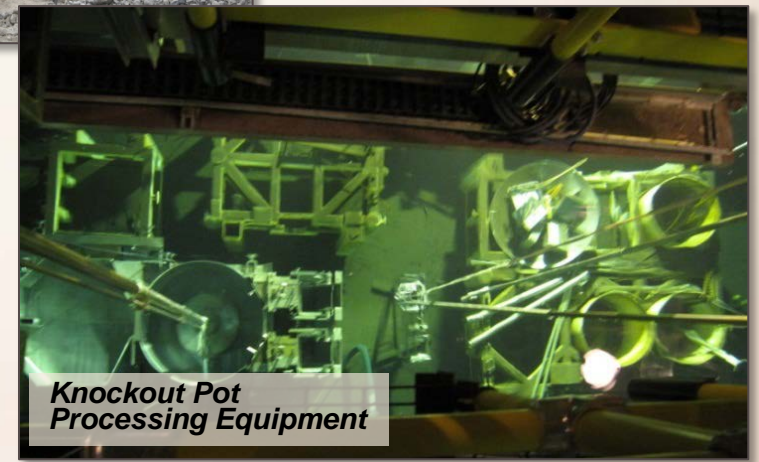
River Corridor K Area

K Area Demolition

- Demolishing the 183-KE Sedimentation Basin
- Installing Knockout Pot Processing System (KPS) equipment in 105KW Basin
- Excavation of the 118-K-1 Reactor Hardware Burial Ground will be complete in April



183-KE Sedimentation Basin



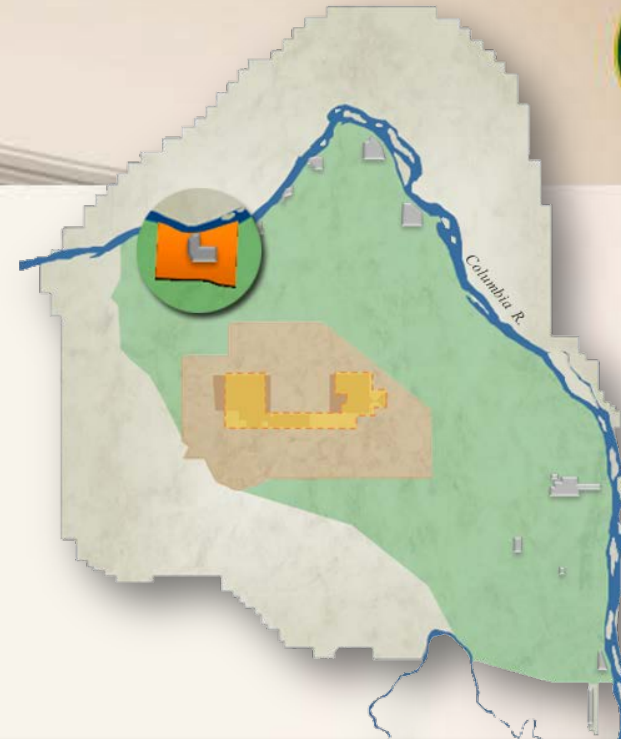
Knockout Pot Processing Equipment



River Corridor C Area

100-C-7 Waste Site

- Massive excavation of chromium contaminated soil at B/C Area
- Excavation to groundwater completed
- Electrical power lines are being moved to access chromium plume in sidewall of excavation



100-C-7 Aerial – November 2011 -- BEFORE



100-C-7 Aerial – February 2012 -- AFTER

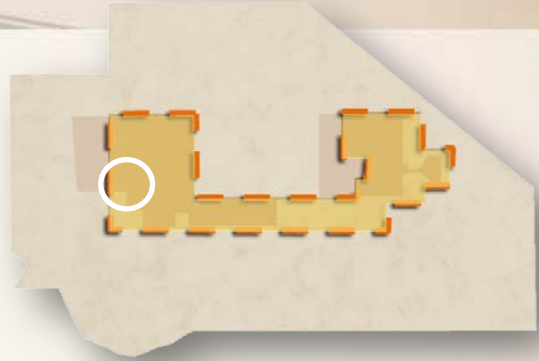




Central Plateau Inner Area: Plutonium Finishing Plant

Plans for FY 2012:

- Demolish 55 pencil tank units; 75 of 196 total units to date
- Demolish 4 of 6 plutonium vaults
- Remove 4 glove boxes; 167 of 238 total glove boxes to date



Demolition of PFP Vault Building



Glovebox removal from Plutonium Process Support Laboratory area



Loading of Glove Boxes Into New Standard Large Waste Box (SLB2)



SLB2 Top Cover Being Removed for Loading of GB HC-11



GB HC-11 on a Lift Table Being Prepared by Riggers to be loaded into SLB2



Loading of GB HC-11 into SLB2



GB HC-11 inside the SLB2 with Dunnage Supports



Loading HA-14DC into SLB2





Central Plateau Inner Area



Waste & Fuels Management

- Deployed standard large box waste containers
- Completed treatment of 300 million gallons at the Effluent Treatment Facility
- Completed Acceptance Testing Plan (ATP) for the High Energy Real-Time Radiography (HERTR)

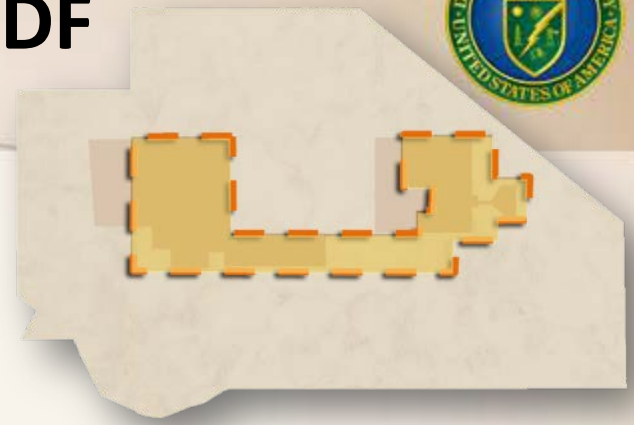


Effluent Treatment Facility



Central Plateau Inner Area: ERDF

- Extensive treatment of chromium-contaminated soils from 100-C-7 and other waste sites
 - Approximately 67,000 tons of chromium soil was delivered to ERDF. Treatment began March 21, 2012





Groundwater

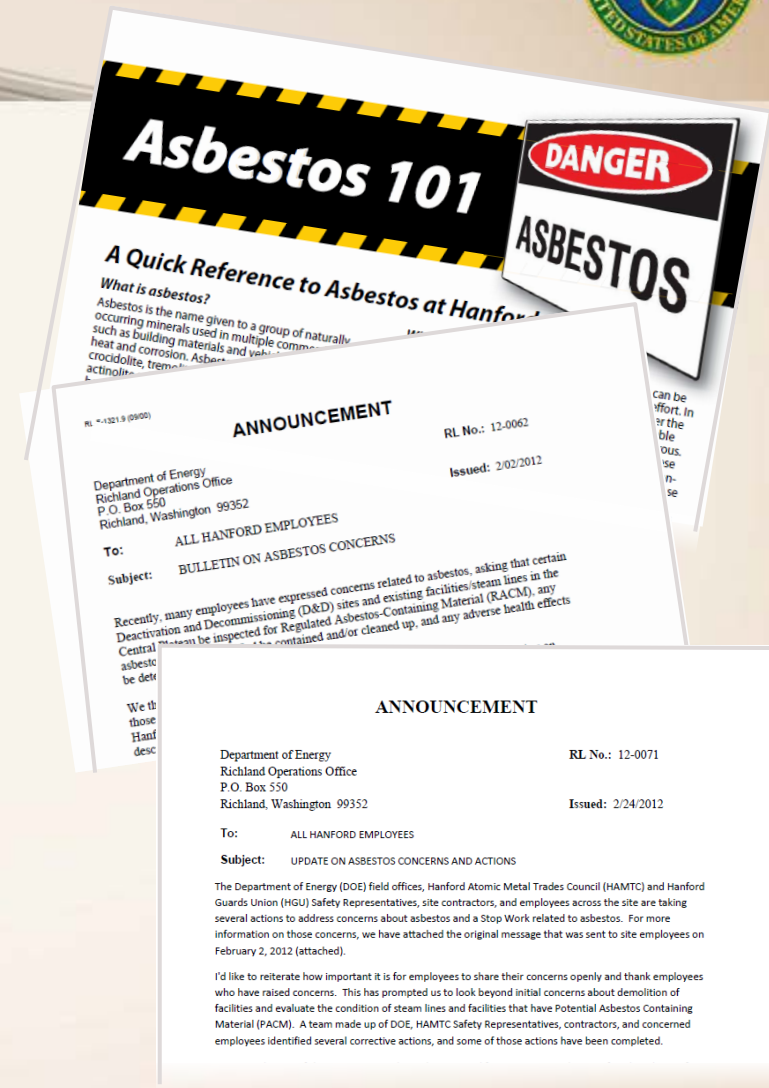
- Treated 489 million gallons of groundwater through February 2012
- 100 Area Groundwater Treatment Facility processed more than 1 billion gallons of water to drinking water standards since January 2011
- Loaded micro-organisms, or “bio bugs,” and other media at the 200 West Groundwater Treatment Facility
- Completed construction of the S-SX extraction building for the 200 West Groundwater Treatment Facility





Asbestos Background

- Employees and EPA Inspector General raised concerns about demolition and facilities with asbestos-containing materials
- Areas barricaded and team formed: concerned employees, HAMTC, contractors, DOE, CSC Hanford Occupational Health Services
- Facility/Area walk downs, sampling, follow-up actions
- Communication with employees and former employees
- Appreciate employees raising concerns, DOE is assisting EPA with corrective action plan to respond to EPA-IG concerns





Budget

Richland Operations Office	FY12 APPROPRIATION	FY13 PRESIDENT'S BUDGET (Realigned)	FY14 REQUIREMENTS
Total \$ in thousands	\$1,021.8	\$1,037.8	\$1,322.4*

TPA Compliance

River Corridor Closure

K Basin Sludge

Plutonium Finishing Plant

Groundwater

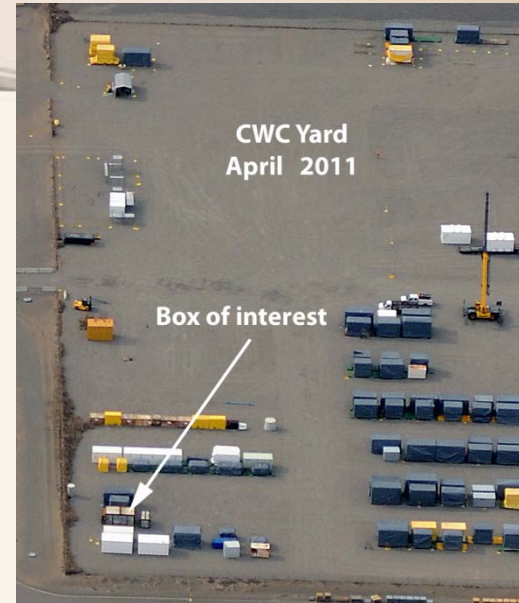
River Corridor Records of Decision



*FY14 requirements are draft and subject to change.



CWC Box





2012 Lifecycle Scope, Schedule & Cost Report

- In development...
- Public feedback is an ongoing part of the annual report preparation process.
- Written feedback on the 2012 Report needs to be submitted to LCSSC@rl.gov by April 13, 2012
- The 2013 Lifecycle Report will be issued January 31, 2013



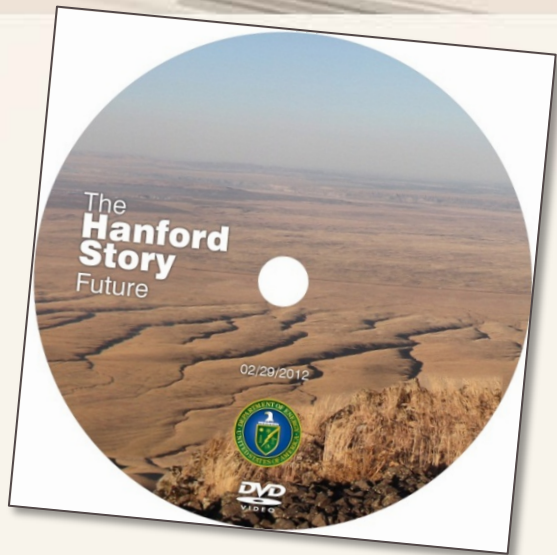
Getting the Word Out

The Hanford Story

- *The Future Chapter* – released March 2012

Hanford Tours - 2012

- 60 Hanford Site tours
 - Tours began this week
 - 60 public tours in 2011
- 81 B Reactor tours
 - April 2nd first tour of season
 - 48 tours in 2011



Speakers Bureau

- 2,369 audience participants at 26 venues in FY12
 - 380 individuals and 5 venues since February 2012



Cameron Salony speaks with students from Chief Joseph Middle School in Richland

Questions

