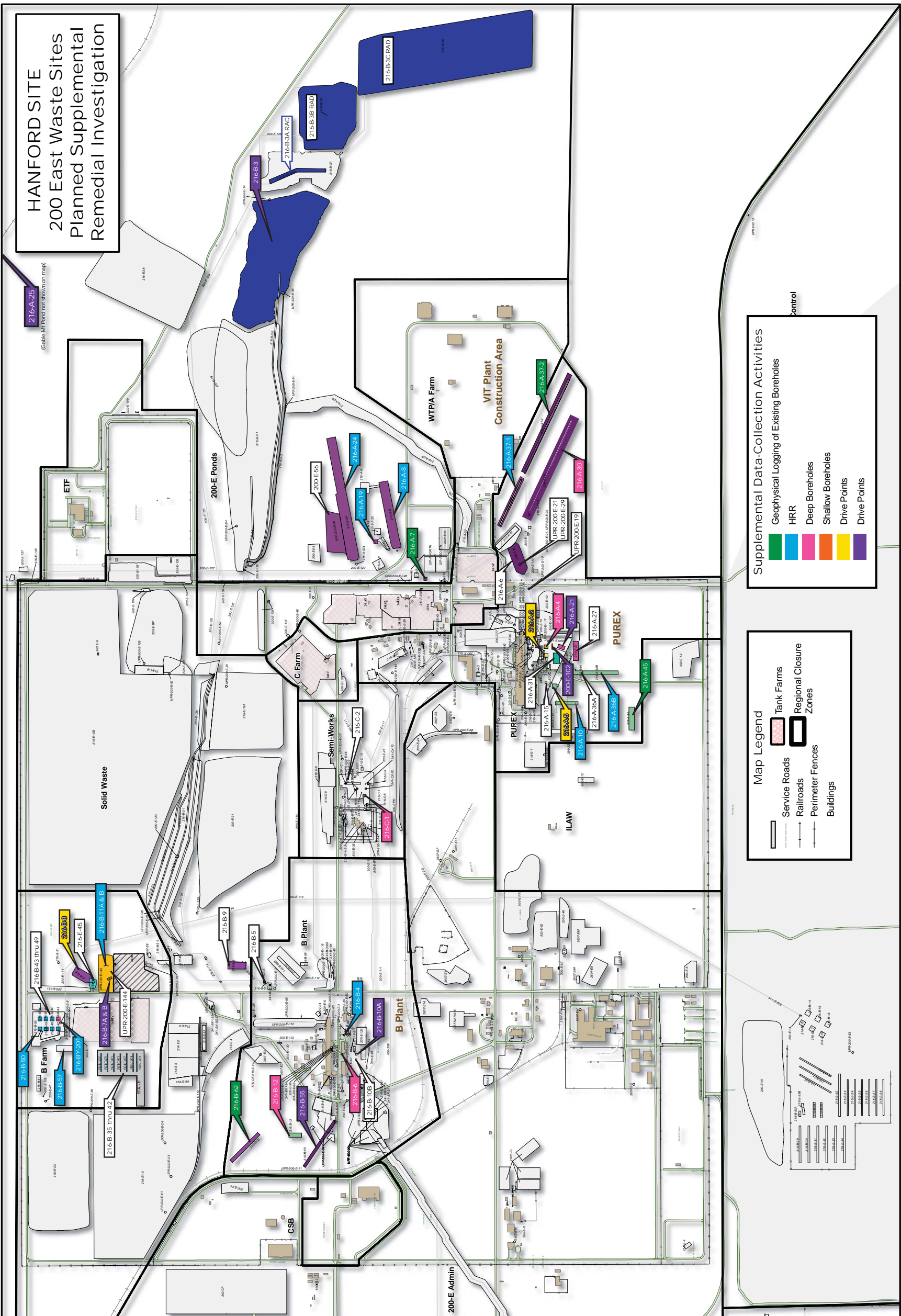


HANFORD SITE
200 East Waste Sites
Planned Supplemental
Remedial Investigation

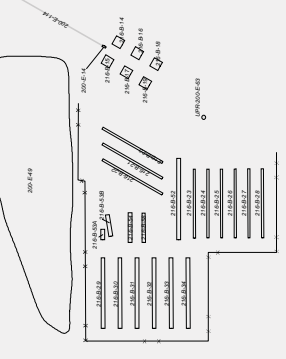


Supplemental Data-Collection Activities

- Geophysical Logging of Existing Boreholes
- HRR
- Deep Boreholes
- Shallow Boreholes
- Drive Points
- Drive Points

Map Legend

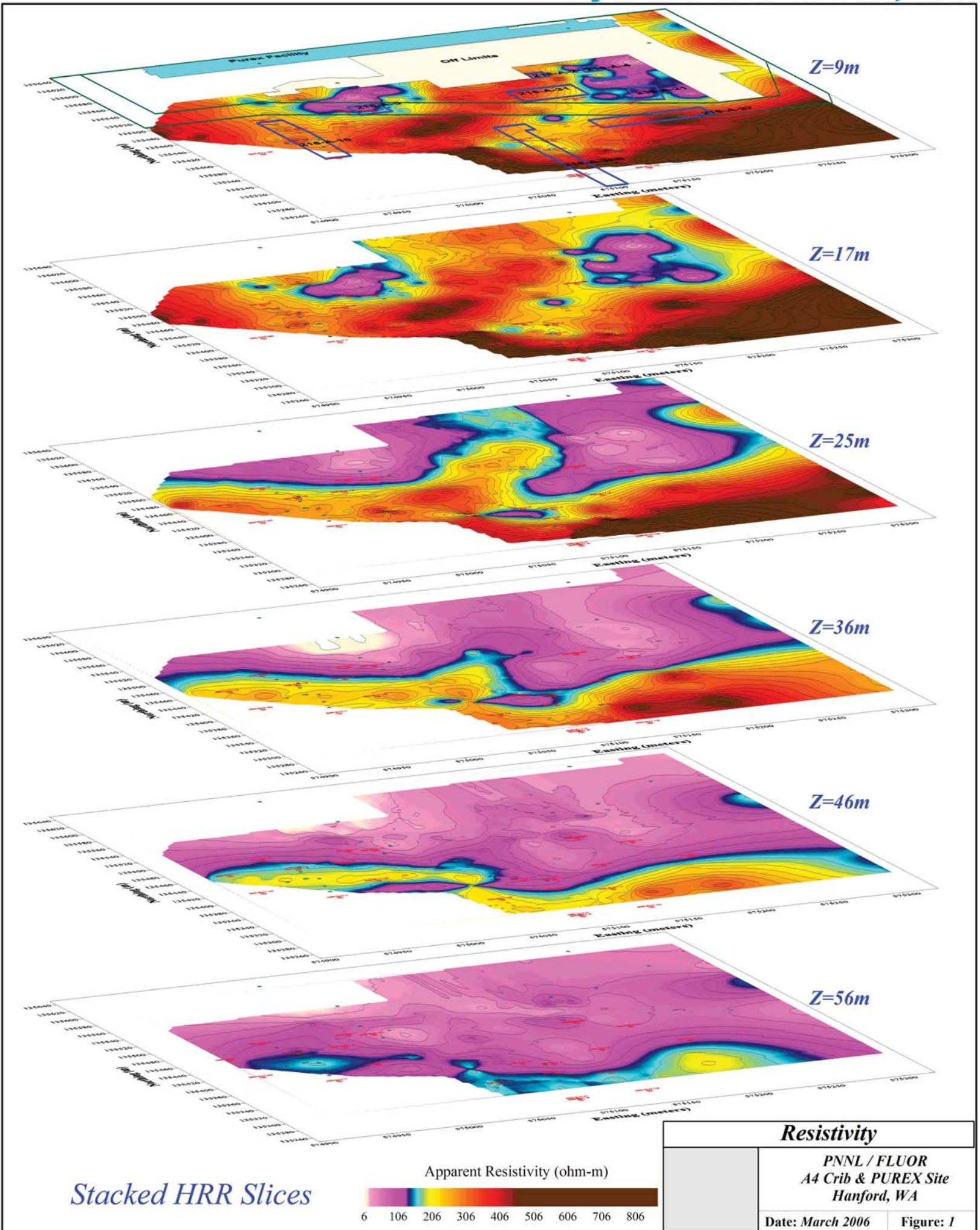
- Service Roads
- Railroads
- Perimeter Fences
- Buildings
- Tank Farms
- Regional Closure Zones



High-Resolution Resistivity Surveys

PRELIMINARY - For presentation purposes only

hydroGEOPHYSICS, Inc.



FILE: Figure 24 - Stacked HRR Slices.srf

2005-062

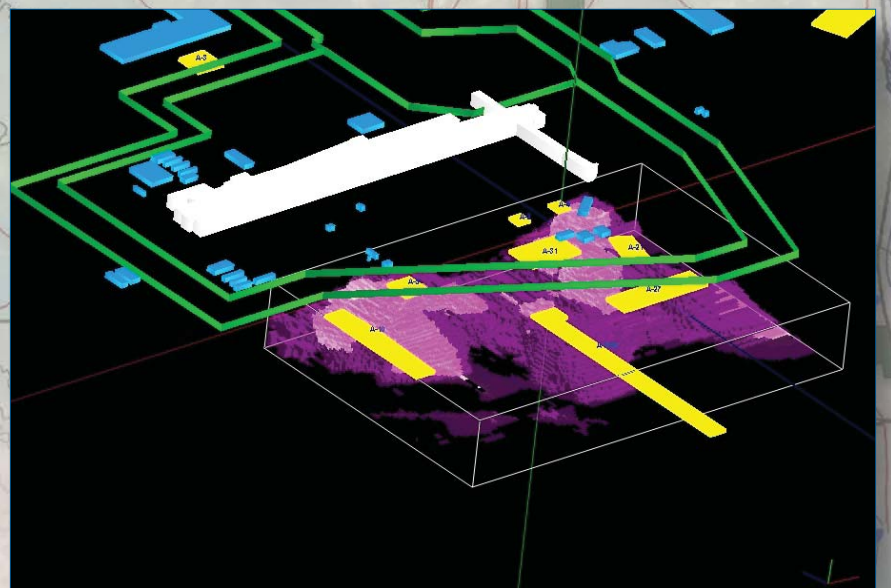
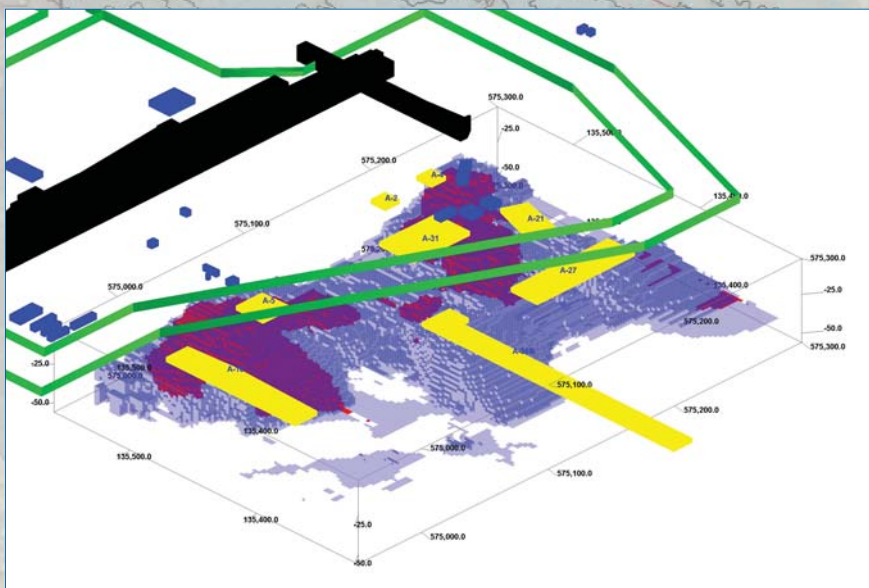
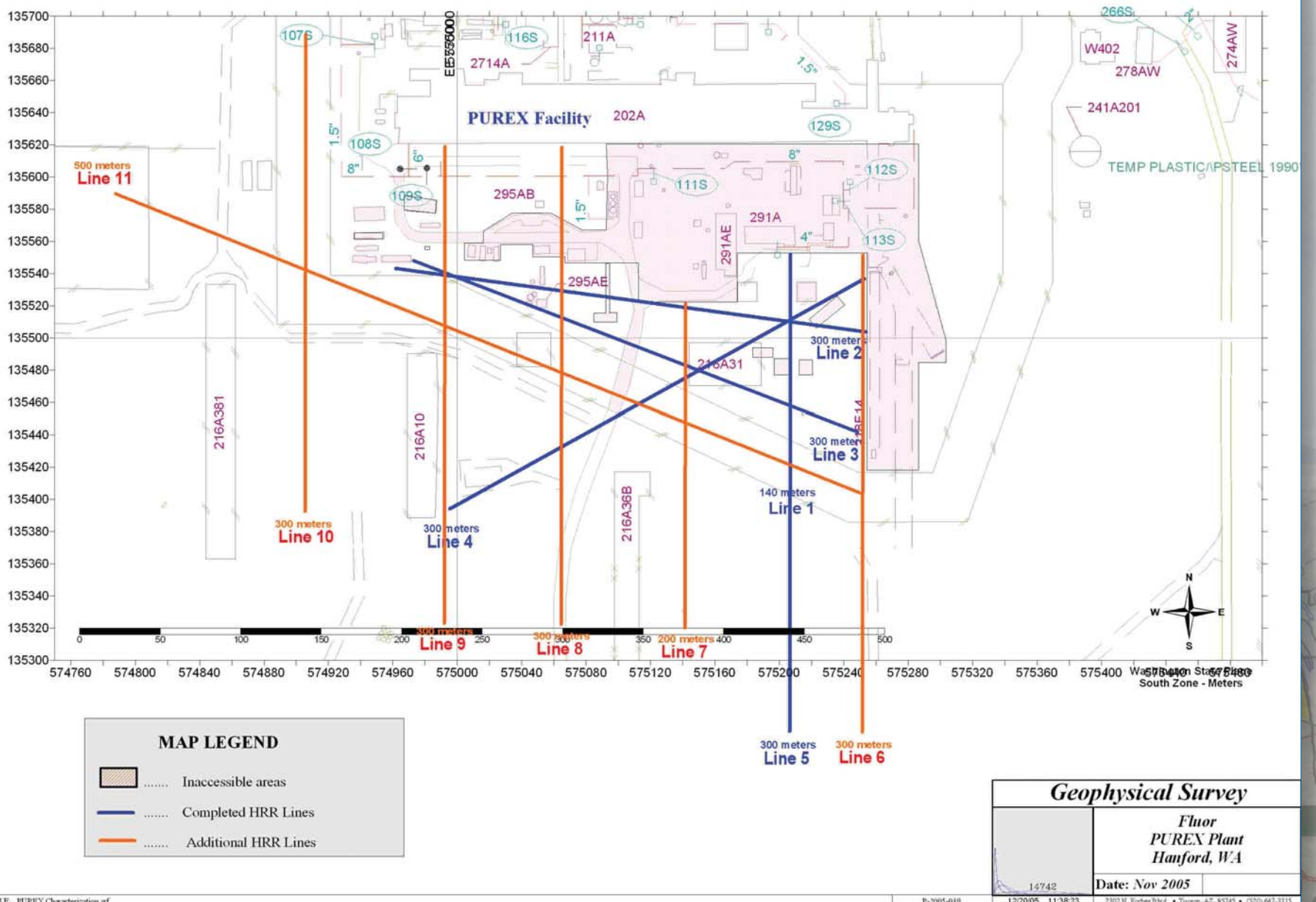
03/31/06 09:58:53

2302 N. Forbes Blvd. • Tucson, AZ 85745 • (520) 647-3315

High-Resolution Resistivity Surveys

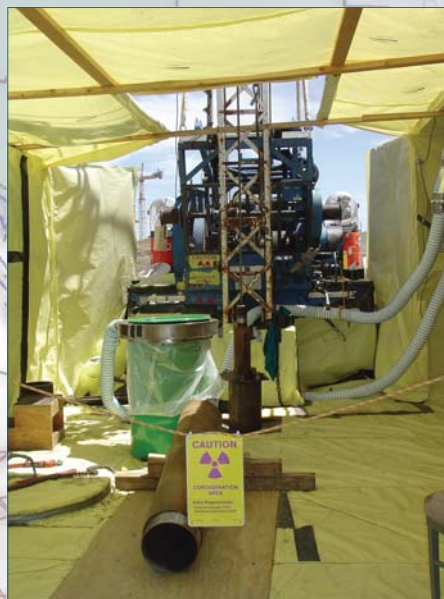
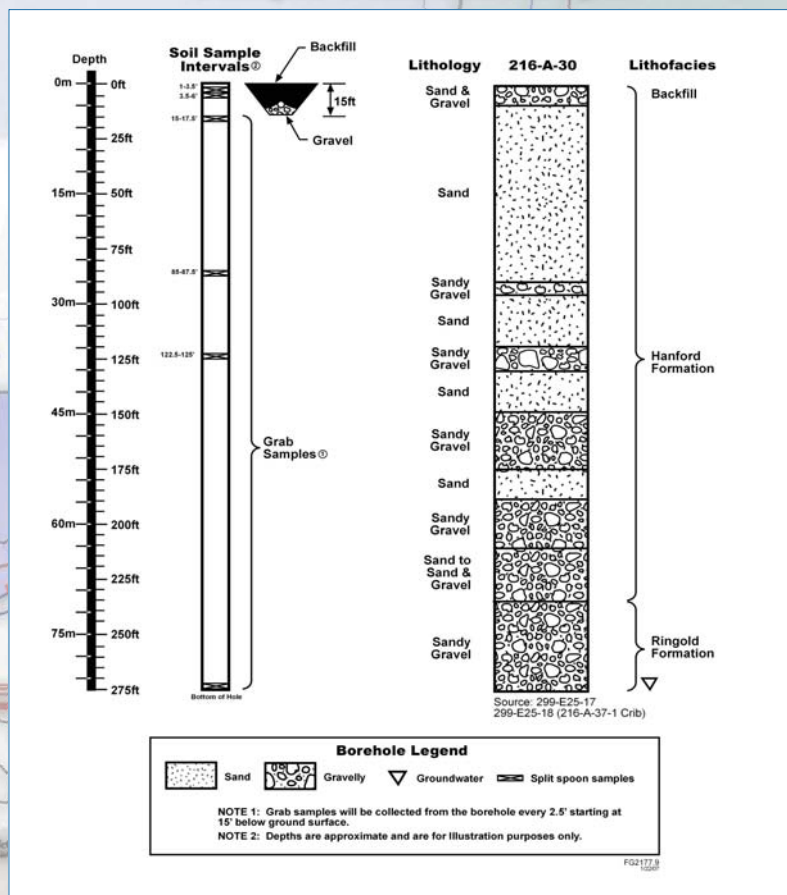
hydroGEOPHYSICS, Inc.

Geophysical Test Line Coverage of the PUREX Plant



Drilling

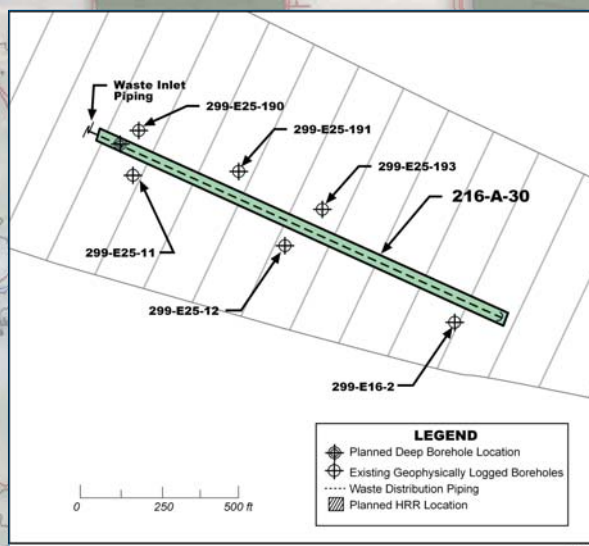
Sample Collection Depth



Drill Head



Loading Split Spoon



Geophysical Logging



Drilling



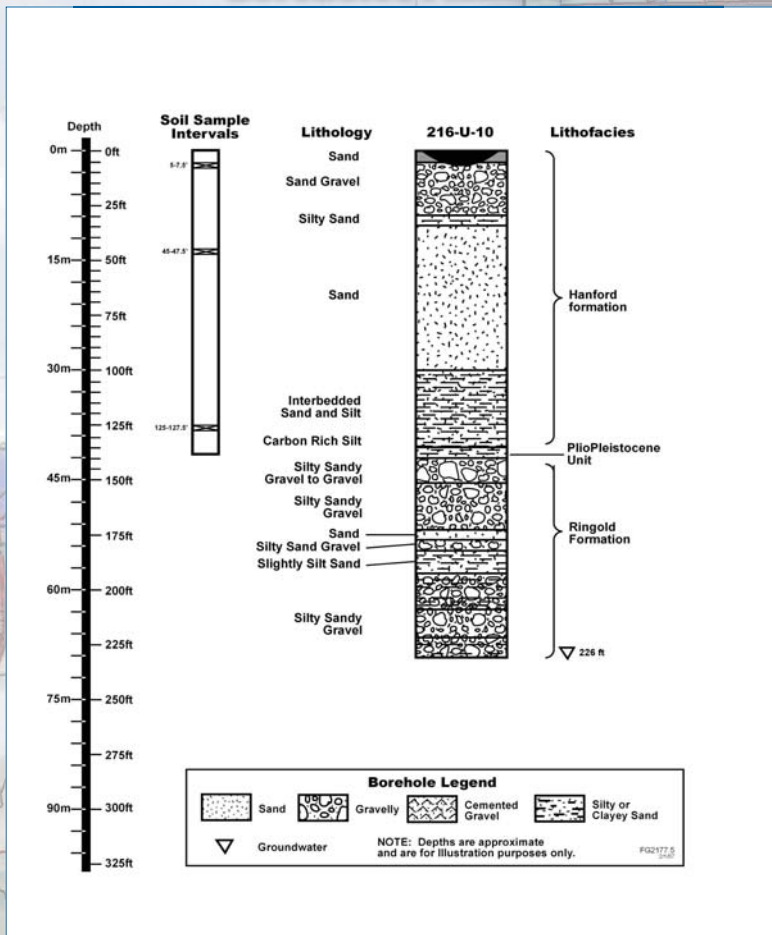
Drill Rig



Sample Collection

Test Pits

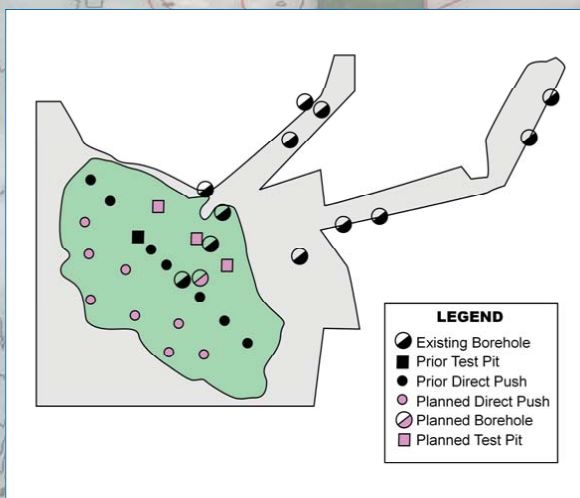
U-Pond Test Pits, Direct Pushes, and Boreholes Planned



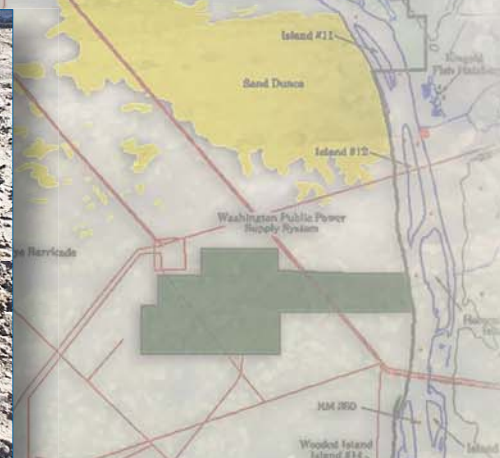
Preparing Site for Test Pit



Sampling from Excavator Bucket



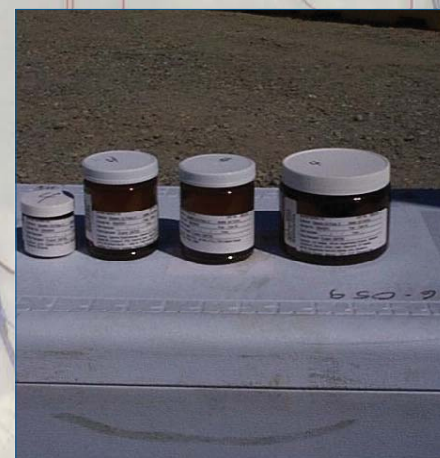
Excavation



Sample Bowl



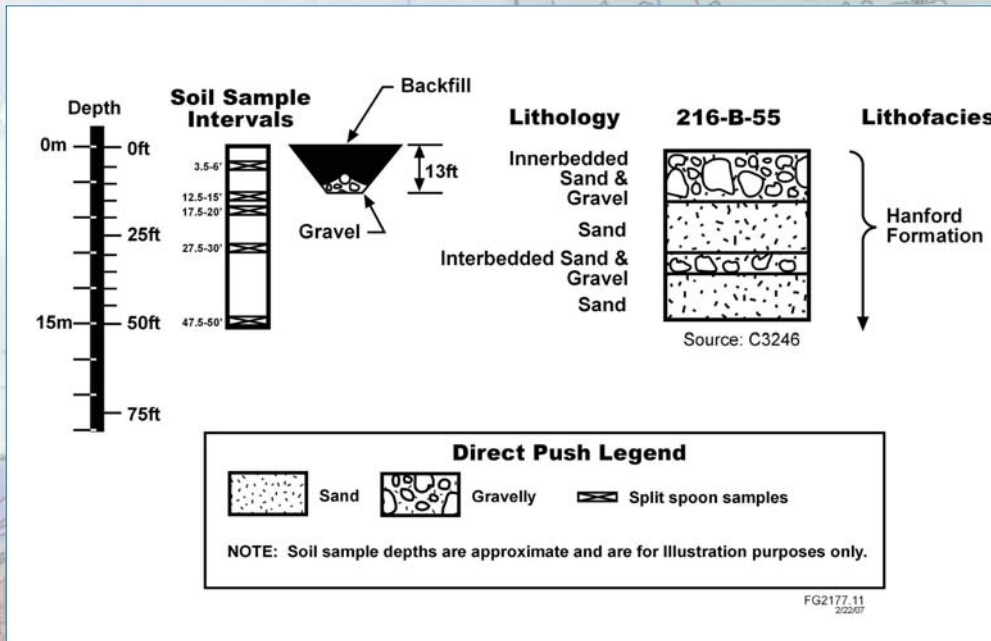
Excavating Test Pit



Sample Set

Direct Push

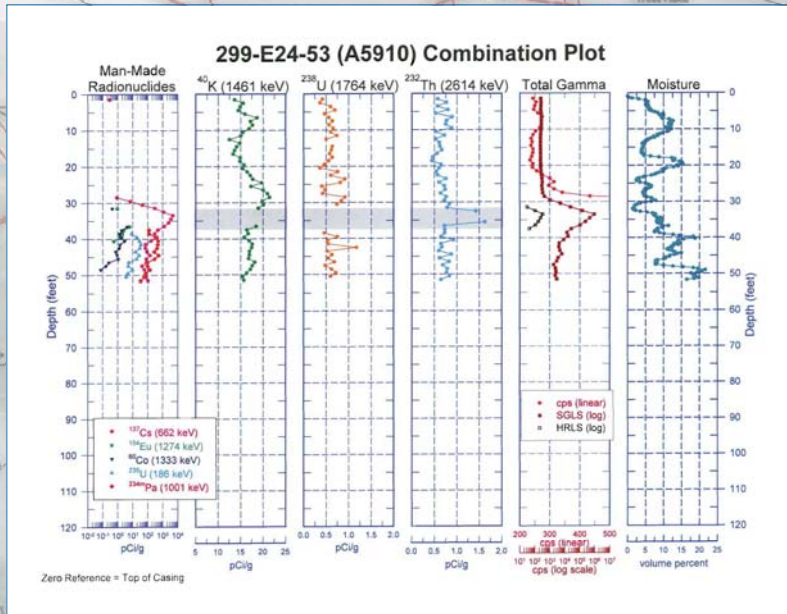
Example Direct Push Sample Strategy



Geoprobe



Pushing with Diesel Hammer



Diesel Hammer Push Technique



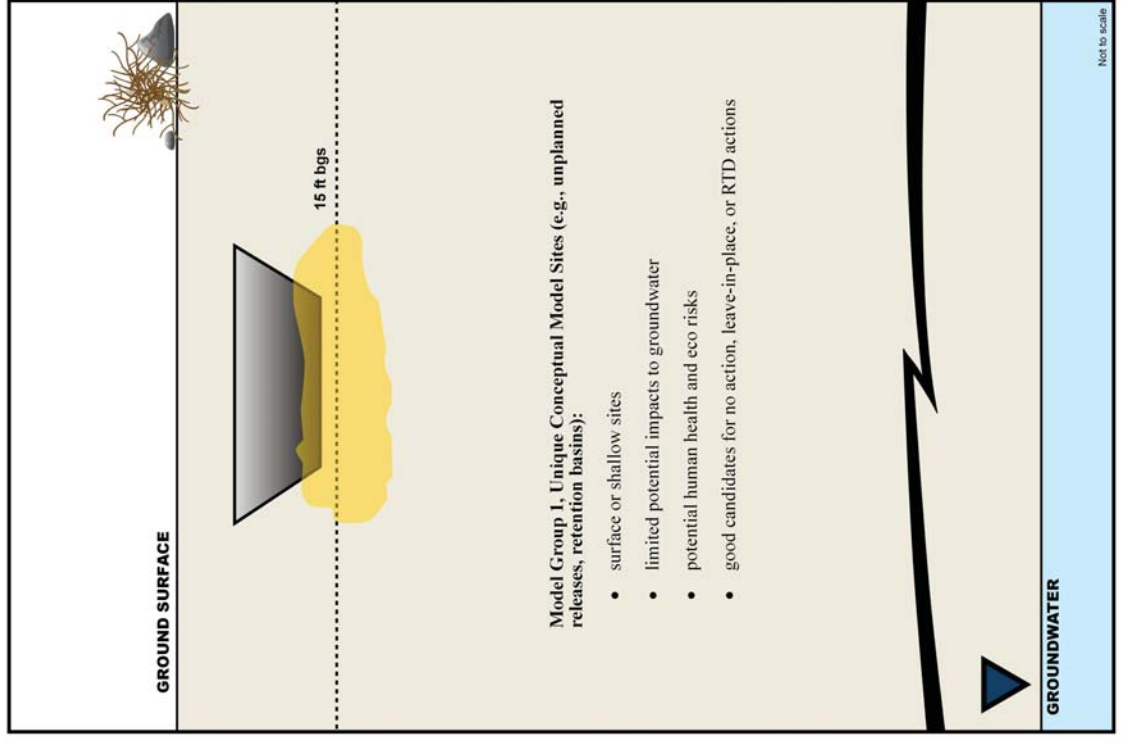
Field Measurements at the Geoprobe Head



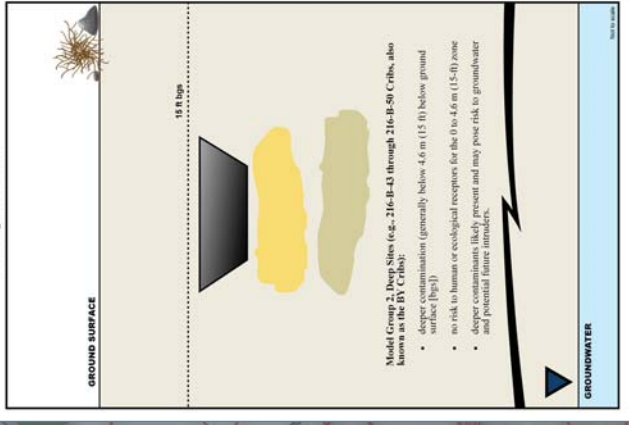
Geoprobe Sampling

Model Groups

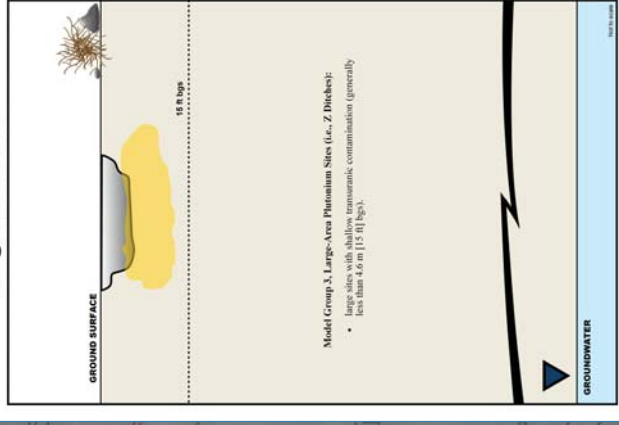
Model Group 1 Shallow Sites



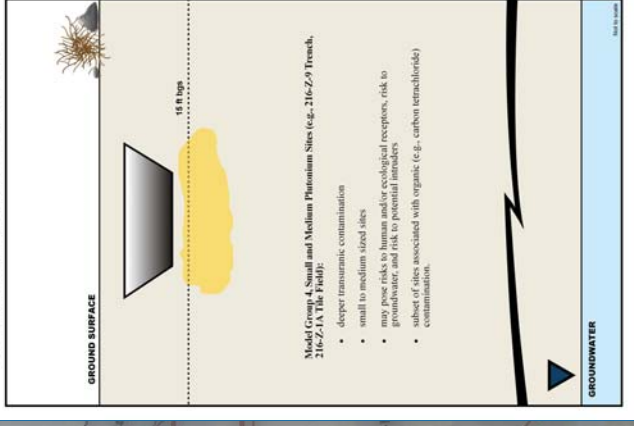
Model Group 2 Deep Sites



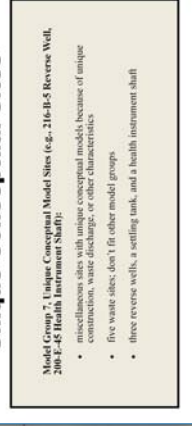
Model Group 3 Large PU Sites



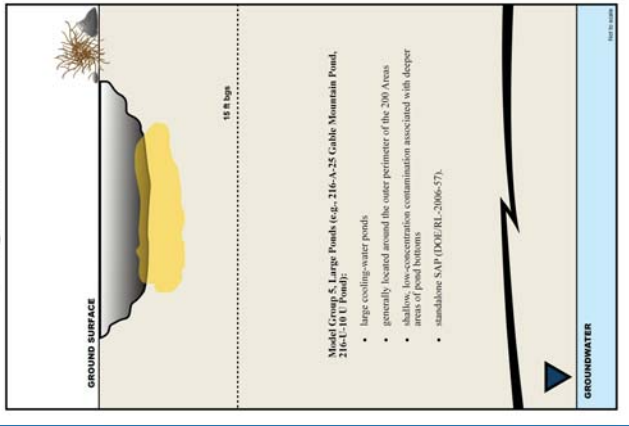
Model Group 4 Small to Medium PU Sites



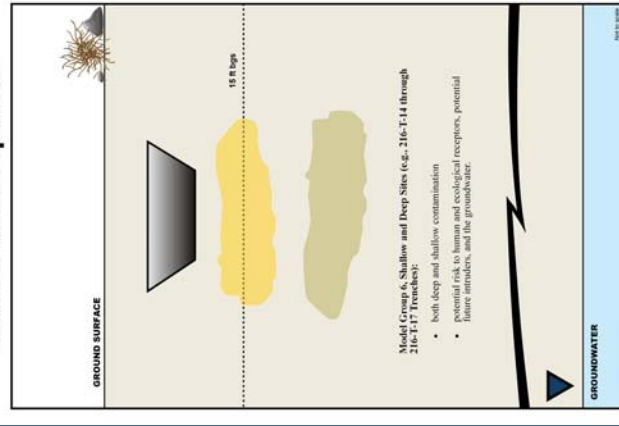
Model Group 7 Unique Conceptual Sites



Model Group 5 Large Ponds



Model Group 6 Shallow and Deep Sites



200-MG-1 & 200-MG-2
Feasibility Studies

Supplemental Work Plan