

# Office of River Protection

## Agency Update

### Hanford Advisory Board

December 5, 2008

**Steve Pfaff**

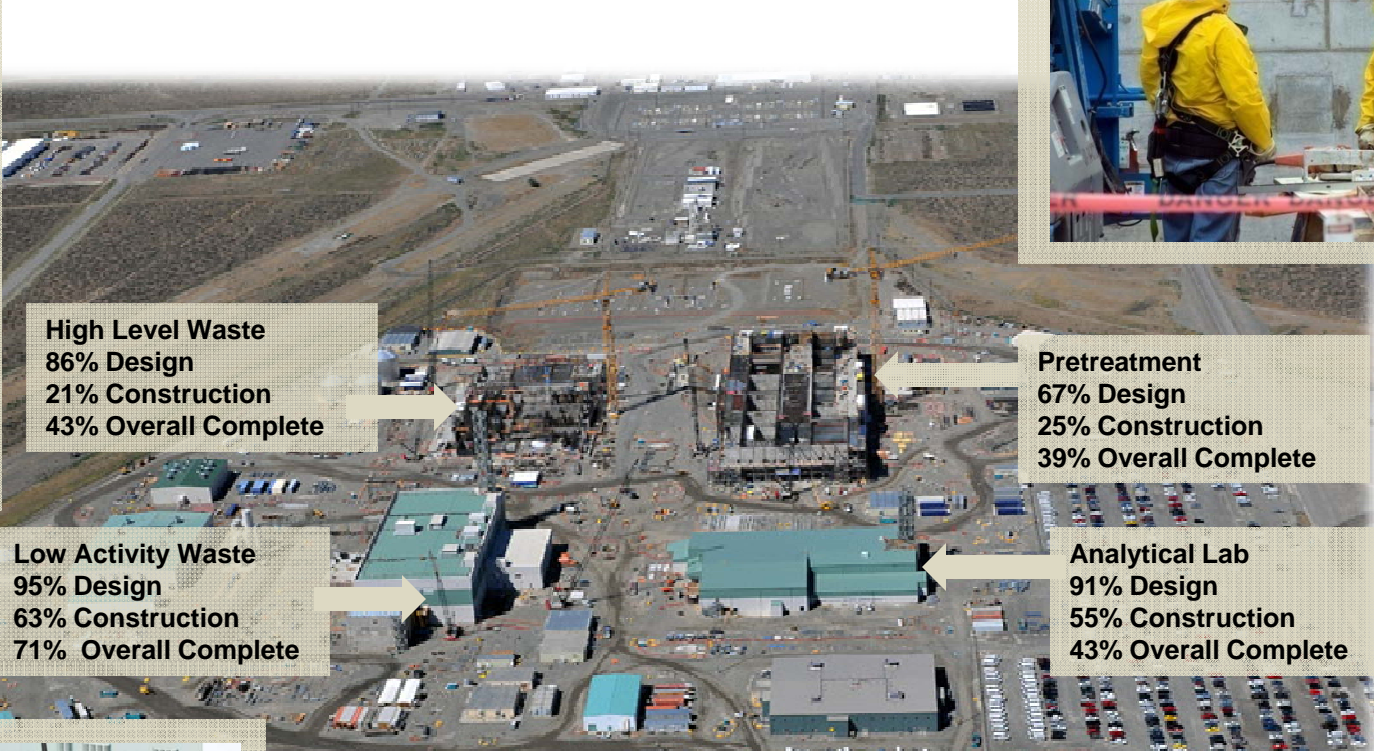
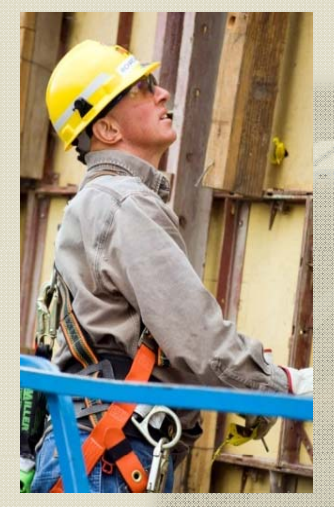
TOC Transition/FPD Retrievals  
Office of River Protection

# Office of River Protection - Safety

- **WRPS** achieved 1 million hour mark without lost time on October 31, 2008.
- **CH2M HILL** achieved 1 million hours without a lost time injury on July 11, 2008.
- **BNI** achieved 6.68 million work hours without a lost time accident through November 30, 2008 – 355 days. The CY 2008 year-to-date LWD case rate is zero.

Performance Indicator	Metric/Goal	Tank Farm FY 2008 Actual Performance				WTP FY 2008 Actual Performance			
		1 <sup>st</sup> Q	2 <sup>nd</sup> Q	3 <sup>rd</sup> Q	4 <sup>th</sup> Q	1 <sup>st</sup> Q	2 <sup>nd</sup> Q	3 <sup>rd</sup> Q	4 <sup>th</sup> Q
Occupational Safety	OSHA Total Recordable Case (TRC) rate. TFC 1.0 and below green and >1.9 red; Total WTP Project 1.5 and below green and >1.9 red.	1.28	1.86	.60	1.20	1.63	0.74	1.57	0.78
	TRC for WTP Construction Site. 3.0 and below green; 4.0 and greater red.	N/A				3.65	1.6	3.21	1.59
	OSHA Days Away from Work or Restricted Days (DART) Case Rate. TFC 0.4 cases and below green and > 1.0 red. Total WTP Project 1.0 and below green and 1.4 and above red.	0	0.62	.30	0	0.54	0.12	0.56	0.11
	DART for WTP Construction Site. 2.0 and below green; 3.0 and above red.	N/A				1.23	0.27	1.15	0.23
	Days Away from Work Case Rate. 0.5 and below green; 0.65 & above red.	0	0.62	.30	0	0.14	0	0	0
	DAFW for WTP Construction Site. 1.06 or less case rate is green; 1.06 to 1.53 yellow; greater than 1.53 red.	N/A				0.30	0	0	0

# Waste Treatment Plant

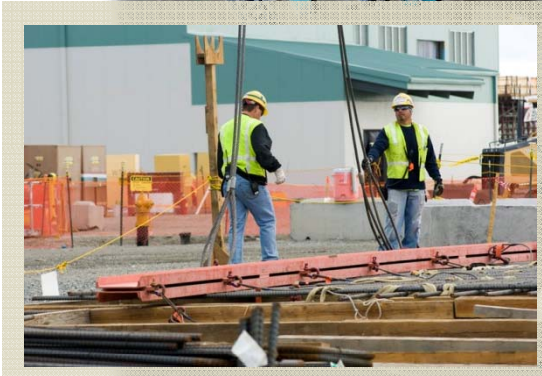


**High Level Waste**  
 86% Design  
 21% Construction  
 43% Overall Complete

**Pretreatment**  
 67% Design  
 25% Construction  
 39% Overall Complete

**Low Activity Waste**  
 95% Design  
 63% Construction  
 71% Overall Complete

**Analytical Lab**  
 91% Design  
 55% Construction  
 43% Overall Complete



**Balance of Facilities**  
 75% Design  
 64% Construction  
 51% Overall Complete





# Waste Treatment Plant



Employees check out the Pretreatment Engineering Plant ultrafilter recirculation pump control panels



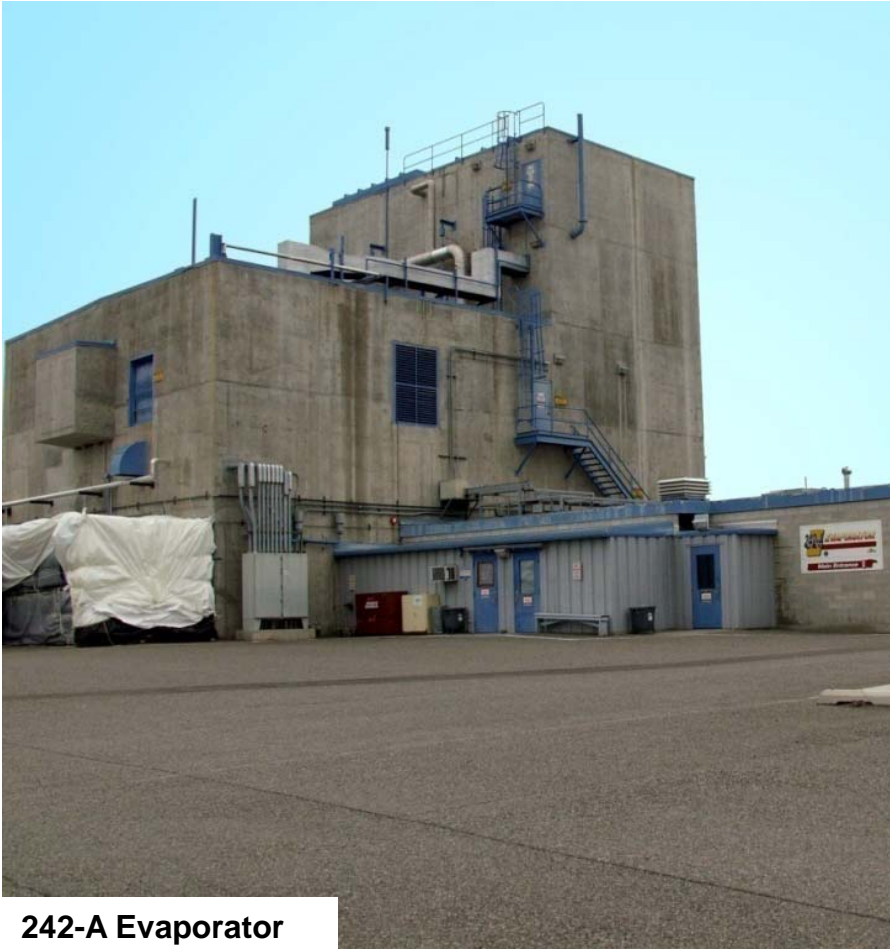
Employees work on the upper level of the Pretreatment Engineering Platform. The upper level contains the pulse jet mixers, samplers, instrumentation, and ventilation valving.



Pretreatment Engineering Platform ultrafilter pulse pots and valves provide the ability to back pulse the ultrafilters to maintain flow



# Tank Farms



**242-A Evaporator**



**A team of workers is busy decontaminating the condenser room at the 242-A Evaporator. The work follows a major upgrade to the facility.**